

TRACT NO. 36069
 PRIVATE CONTRACT NO. 10366

W.S. 34
 3 SHEETS, 5 PAGES
 SCALE: VERT. 1" = 4' HORIZ. 1" = 40'
 FEBRUARY, 1985
 PREPARED IN THE OFFICE OF
 THIELMANN/HEXENHOLM
 321 N. GARDEN ST. SUITE 200
 ORANGE, CA 92668
 REG. C. E. No. 82742

50969

THE FOLLOWING LATEST REVISED STANDARD PLANS ON FILE IN THE OFFICE OF THE DEPT. OF PUBLIC WORKS SHALL APPLY IN THE CONSTRUCTION OF THIS PROJECT:

SEWER	5-1
SEWER MANHOLE	5-2
SEWER MANHOLE COVER	5-3
SEWER MANHOLE RING	5-4
SEWER MANHOLE FRAME AND COVER	5-5
SEWER MANHOLE FRAME AND COVER	5-6
SEWER MANHOLE FRAME AND COVER	5-7
SEWER MANHOLE FRAME AND COVER	5-8
SEWER MANHOLE FRAME AND COVER	5-9
SEWER MANHOLE FRAME AND COVER	5-10
SEWER MANHOLE FRAME AND COVER	5-11
SEWER MANHOLE FRAME AND COVER	5-12
SEWER MANHOLE FRAME AND COVER	5-13
SEWER MANHOLE FRAME AND COVER	5-14
SEWER MANHOLE FRAME AND COVER	5-15
SEWER MANHOLE FRAME AND COVER	5-16
SEWER MANHOLE FRAME AND COVER	5-17
SEWER MANHOLE FRAME AND COVER	5-18
SEWER MANHOLE FRAME AND COVER	5-19
SEWER MANHOLE FRAME AND COVER	5-20
SEWER MANHOLE FRAME AND COVER	5-21
SEWER MANHOLE FRAME AND COVER	5-22
SEWER MANHOLE FRAME AND COVER	5-23
SEWER MANHOLE FRAME AND COVER	5-24
SEWER MANHOLE FRAME AND COVER	5-25
SEWER MANHOLE FRAME AND COVER	5-26
SEWER MANHOLE FRAME AND COVER	5-27
SEWER MANHOLE FRAME AND COVER	5-28
SEWER MANHOLE FRAME AND COVER	5-29
SEWER MANHOLE FRAME AND COVER	5-30
SEWER MANHOLE FRAME AND COVER	5-31
SEWER MANHOLE FRAME AND COVER	5-32
SEWER MANHOLE FRAME AND COVER	5-33
SEWER MANHOLE FRAME AND COVER	5-34
SEWER MANHOLE FRAME AND COVER	5-35
SEWER MANHOLE FRAME AND COVER	5-36
SEWER MANHOLE FRAME AND COVER	5-37
SEWER MANHOLE FRAME AND COVER	5-38
SEWER MANHOLE FRAME AND COVER	5-39
SEWER MANHOLE FRAME AND COVER	5-40
SEWER MANHOLE FRAME AND COVER	5-41
SEWER MANHOLE FRAME AND COVER	5-42
SEWER MANHOLE FRAME AND COVER	5-43
SEWER MANHOLE FRAME AND COVER	5-44
SEWER MANHOLE FRAME AND COVER	5-45
SEWER MANHOLE FRAME AND COVER	5-46
SEWER MANHOLE FRAME AND COVER	5-47
SEWER MANHOLE FRAME AND COVER	5-48
SEWER MANHOLE FRAME AND COVER	5-49
SEWER MANHOLE FRAME AND COVER	5-50
SEWER MANHOLE FRAME AND COVER	5-51
SEWER MANHOLE FRAME AND COVER	5-52
SEWER MANHOLE FRAME AND COVER	5-53
SEWER MANHOLE FRAME AND COVER	5-54
SEWER MANHOLE FRAME AND COVER	5-55
SEWER MANHOLE FRAME AND COVER	5-56
SEWER MANHOLE FRAME AND COVER	5-57
SEWER MANHOLE FRAME AND COVER	5-58
SEWER MANHOLE FRAME AND COVER	5-59
SEWER MANHOLE FRAME AND COVER	5-60
SEWER MANHOLE FRAME AND COVER	5-61
SEWER MANHOLE FRAME AND COVER	5-62
SEWER MANHOLE FRAME AND COVER	5-63
SEWER MANHOLE FRAME AND COVER	5-64
SEWER MANHOLE FRAME AND COVER	5-65
SEWER MANHOLE FRAME AND COVER	5-66
SEWER MANHOLE FRAME AND COVER	5-67
SEWER MANHOLE FRAME AND COVER	5-68
SEWER MANHOLE FRAME AND COVER	5-69
SEWER MANHOLE FRAME AND COVER	5-70
SEWER MANHOLE FRAME AND COVER	5-71
SEWER MANHOLE FRAME AND COVER	5-72
SEWER MANHOLE FRAME AND COVER	5-73
SEWER MANHOLE FRAME AND COVER	5-74
SEWER MANHOLE FRAME AND COVER	5-75
SEWER MANHOLE FRAME AND COVER	5-76
SEWER MANHOLE FRAME AND COVER	5-77
SEWER MANHOLE FRAME AND COVER	5-78
SEWER MANHOLE FRAME AND COVER	5-79
SEWER MANHOLE FRAME AND COVER	5-80
SEWER MANHOLE FRAME AND COVER	5-81
SEWER MANHOLE FRAME AND COVER	5-82
SEWER MANHOLE FRAME AND COVER	5-83
SEWER MANHOLE FRAME AND COVER	5-84
SEWER MANHOLE FRAME AND COVER	5-85
SEWER MANHOLE FRAME AND COVER	5-86
SEWER MANHOLE FRAME AND COVER	5-87
SEWER MANHOLE FRAME AND COVER	5-88
SEWER MANHOLE FRAME AND COVER	5-89
SEWER MANHOLE FRAME AND COVER	5-90
SEWER MANHOLE FRAME AND COVER	5-91
SEWER MANHOLE FRAME AND COVER	5-92
SEWER MANHOLE FRAME AND COVER	5-93
SEWER MANHOLE FRAME AND COVER	5-94
SEWER MANHOLE FRAME AND COVER	5-95
SEWER MANHOLE FRAME AND COVER	5-96
SEWER MANHOLE FRAME AND COVER	5-97
SEWER MANHOLE FRAME AND COVER	5-98
SEWER MANHOLE FRAME AND COVER	5-99
SEWER MANHOLE FRAME AND COVER	5-100

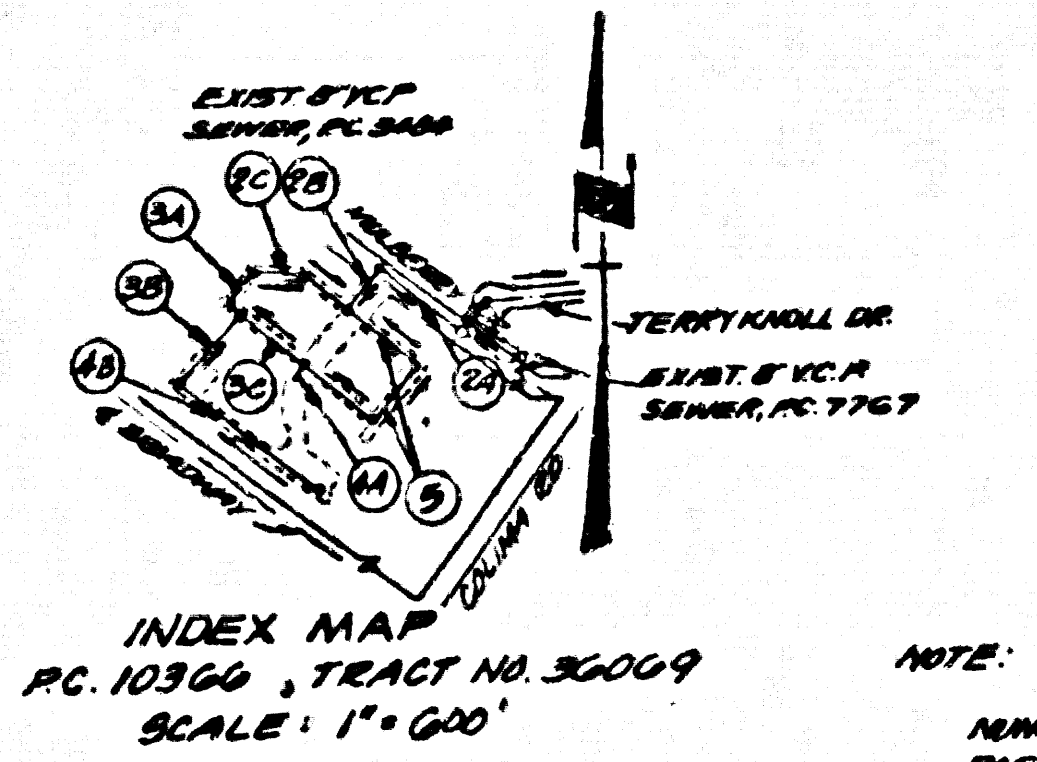
COUNTY OF LOS ANGELES, CALIFORNIA
 THOMAS A. TIDEMANSON, DIRECTOR OF PUBLIC WORKS
 CHARLES W. CARRY, CHIEF ENGINEER
 APPROVED: *[Signature]* 6/18/85 APPROVED: *[Signature]* 6-20-85
 CHECKED: *[Signature]* 6-19-85
 REG. C. E. No. 32134
 WHITTIER, INDG. DIST. 11

GENERAL NOTES: CONT.
 1. ALL REFERENCES ON THIS PLAN TO THE COUNTY ENGINEER, THE ROAD DEPARTMENT, OR THE FLOOD CONTROL DISTRICT SHALL APPLY TO THE APPROPRIATE SECTIONS OF THE DEPARTMENT OF PUBLIC WORKS.

GENERAL NOTES:
 1. ELEVATIONS ARE IN FEET ABOVE U.S.C. & G.S. SEA LEVEL DATUM OF 1929.
 2. NO REVISIONS SHALL BE MADE IN THESE PLANS WITHOUT THE APPROVAL OF THE COUNTY ENGINEER.
 3. NO REPRESENTATIVE OF THE COUNTY ENGINEER WILL SURVEY OR LAY OUT ANY PORTION OF THE WORK.
 4. GRADES TO WHICH THIS IMPROVEMENT IS TO BE CONSTRUCTED ARE SHOWN ON PLANS AND PROFILES. GRADE POINTS FOR TOP OF CURBS, CENTER LINE OF STREETS, OR CENTER LINE OF ALLEYS ARE SHOWN BY CIRCLES ON PROFILES. AT ALL POINTS BETWEEN DESIGNATED POINTS THE GRADE SHALL BE ESTABLISHED SO AS TO CONFORM TO A STRAIGHT LINE DRAWN BETWEEN SAID DESIGNATED POINTS.
 5. THE PRIVATE ENGINEER SHALL FURNISH THE COUNTY ENGINEER WITH GRADE SHEETS AND STATIONING FOR ALL HOUSE LATERALS AND 12" OR 16" BRANCHES AND SHALL PROVIDE STAKES FOR THEM AT THEIR PROPER LOCATIONS WITH STATIONING PLAINLY MARKED. ALL HOUSE LATERALS SHALL BE CONSTRUCTED IN A STRAIGHT ALIGNMENT AT RIGHT ANGLES FROM THE MAIN LINE SEWER EXCEPT AS SHOWN ON THE PLANS. HOUSE LATERALS FROM CHIMNEYS SHALL NOT HAVE AN ANGLE OF LESS THAN 45° WITH THE MAIN LINE SEWER. ANY CHANGE IN ALIGNMENT SHALL BE REQUESTED IN WRITING BY THE PRIVATE ENGINEER.
 6. THE PRIVATE ENGINEER SHALL FURNISH THE COUNTY ENGINEER WITH GRADE SHEETS AND STATIONING FOR ALL HOUSE LATERALS FOR EACH HOUSE LATERAL ON THE GRADE SHEET.
 7. BEFORE WORK CAN BE STARTED THE CONTRACTOR MUST OBTAIN A PERMIT TO EXCAVATE IN COUNTY STREETS FROM THE L.A. COUNTY ROAD DEPT., DISTRICT OFFICE NO. 10, AND PAY A FEE TO THE COUNTY ENGINEER, 800 S. VERMONT AVENUE, LOS ANGELES, CA 90014 TO COVER THE COST OF CONSTRUCTION INSPECTOR AND RECORD PLANS.
 8. IF WORK IS TO BE DONE IN A STATE HIGHWAY A PERMIT MUST BE OBTAINED FROM THE STATE OF CALIFORNIA, DIVISION OF HIGHWAYS, 120 SOUTH SPRING STREET, LOS ANGELES, CALIFORNIA.
 9. APPROVAL OF THIS PLAN BY THE COUNTY OF LOS ANGELES DOES NOT CONSTITUTE A REPRESENTATION AS TO THE ACCURACY OF THE LOCATION OF OR THE EXISTENCE OF ANY UNDERGROUND UTILITY PIPE, OR STRUCTURE WITHIN THE LIMITS OF THIS PROJECT. THIS NOTE APPLIES TO ALL PAGES.
 10. REFER TO SECTION 7.04.1 OF THE STANDARD SPECIFICATIONS REGARDING SAFETY ORINGS.
 11. PRIOR TO THE ISSUANCE OF THE REQUIRED SEWER CONSTRUCTION PERMIT, THE CONTRACTOR SHALL OBTAIN AND FILE WITH THE COUNTY ENGINEER COPIES OF A PERMIT TO EXCAVATE IN COUNTY STREETS FROM THE LOS ANGELES COUNTY ROAD DEPARTMENT, COUNTY ENGINEER AND THEN THE STATE OF CALIFORNIA, DIVISION OF INDUSTRIAL SAFETY AND A CERTIFICATE OF LIABILITY INSURANCE WITH THE DEPARTMENT OF COUNTY ENGINEER, 800 SOUTH VERMONT, 90014, LOS ANGELES, CALIFORNIA. THESE DOCUMENTS SHALL BE NOTIFIED TO THE HOLDER TO BE NOTIFIED TO THE CANCELLATION OF POLICY.

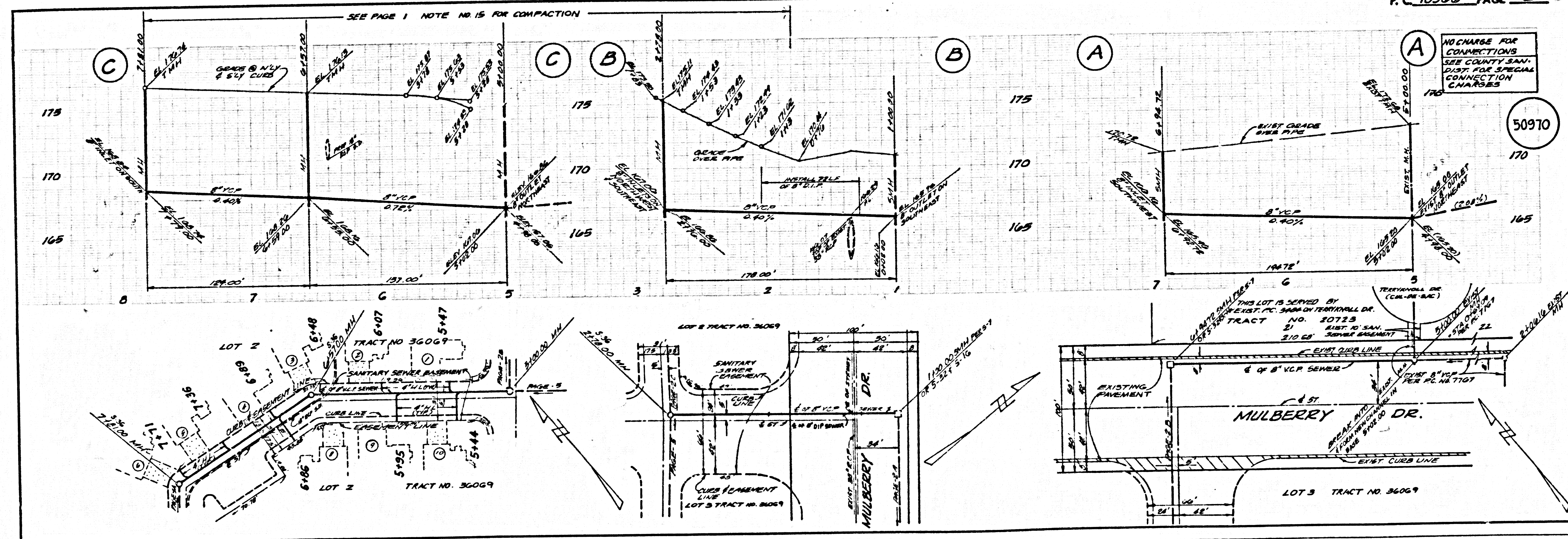
CONSTRUCTION NOTES:
 1. WORK SHALL BE CONSTRUCTED ACCORDING TO THE STANDARD SPECIFICATIONS FOR PUBLIC WORKS CONSTRUCTION (1984 EDITION) WITH THE FOLLOWING AMENDMENTS AND COUNTY ENGINEER SPECIAL INSTRUCTIONS FOR THE CONSTRUCTION OF SANITARY SEWERS DATED 10/27/78, 12/17/78, AND SHALL BE PROMULGATED ONLY IN THE PRESENCE OF THE COUNTY ENGINEER.
 2. THE CONTRACTOR SHALL NOTIFY THE CONSTRUCTION DIVISION BY TELEPHONE 248-3881 AT LEAST TWENTY-FOUR HOURS BEFORE STARTING ANY WORK UNDER THIS PLAN.
 3. HOUSE LATERALS TO BE CONSTRUCTED WITH 12" DIA. PIPE TO THE END OF THE RUN LINE EXCEPT AS NOTED.
 4. PIPE OR BRANCHES MAY BE USED FOR CONNECTIONS TO MANHOLE SEWERS EXCEPT AS NOTED.
 5. ALL STRUCTURES SHALL BE EITHER BRICK MANHOLES PER 5-1 OR PRECAST CONCRETE MANHOLES PER 5-2, EXCEPT AS NOTED.
 6. PROVIDE STAKES ON THE PROPERTY LINE OR PROPERTY LINES PRODUCED AT RIGHT ANGLES TO THE SEWER LINE AT THE CENTER LINE OF EACH MANHOLE.
 7. MANHOLE TOPS IN UNIMPROVED AREAS OF WAY TO BE SIX INCHES ABOVE FINISHED GRADE.
 8. WITHIN 12" CLAY PIPE JOINTS SHALL BE TYPE "B" OR "C" PER STANDARD SPECIFICATIONS SECTION 308.2.
 9. IF A POWER POLE IS WITHIN THREE FEET OF THE SEWER, THE SEWER SHALL BE ENCASED PER 5-23, CASE II, TWO FEET ON EACH SIDE FROM THE POINT OF INTERFERENCE.
 10. IF DURING THE COURSE OF CONSTRUCTION IT IS DETERMINED THAT THERE IS LESS THAN FOUR FEET OF COVER OVER THE TOP OF A MAIN LINE OR HOUSE LATERAL SEWER WHICH IS NOT INDICATED ON THE PLANS, THE PIPE SHALL BE ENCASED PER 5-23, CASE II UNLESS OTHERWISE APPROVED BY THE COUNTY ENGINEER.
 11. ALL JOINTS BETWEEN CAST IRON PIPE AND WITHIN CLAY PIPE SHALL BE MADE WITH A RUBBER SLEEVE JOINT, TYPE "C" OR "D" (WITH BUSHING IF NECESSARY) PER STANDARD SPECIFICATIONS SECTION 308.2.
 12. SEWERS TO BE TESTED FOR LEAKAGE PER SECTION 308.15 OF THE STANDARD SPECIFICATIONS AND SPECIAL PROVISIONS. TESTS SHALL BE ACCORDANCE WITH PERMITS.
 13. REINFORCE ALL TRENCHES WITHIN PAVED AREAS TO MEET L.A. COUNTY ROAD DEPT. OR CALIFORNIA STATE HIGHWAY REQUIREMENTS AS ACCORDANCE WITH PERMITS.
 14. FULL COMPLIANCE WITH SECTION 308.18 OF THE SPECIAL PROVISIONS WILL BE REQUIRED FOR BACKFILL IN STREET CONSTRUCTION OF BACKFILL CONNECTION AND SAME EQUIVALENTS BY A QUALIFIED REGISTERED TESTING LABORATORY SHALL BE PROVIDED BY THE PERMITTEE PRIOR TO THE ISSUANCE OF A CERTIFICATE OF PARTIAL ACCEPTANCE.
 15. SPECIAL BACKFILL IN EXISTING CONSTRUCTION (A) BACKFILL TRENCH AND REPLACE OTHER EARTH SO AS TO ACHIEVE THE NORMAL OF FINISHED GRADE AND BLOWER BLOWN ON THE GRADED PLAN APPROVED FOR THIS DEVELOPMENT BY THE BUILDING AND SAFETY DIVISION (B) ALL BACKFILL AND EARTH RE-PLACED SHALL BE COMPACTED TO A MINIMUM OF 90% OF MAXIMUM DENSITY PER A 3" STD. METHOD OR TEST 90% BY AS SHOWN. ACCEPTABLE CERTIFICATION OF SUCH COMPACTION SHALL BE SUBMITTED TO THE CONSTRUCTION DIVISION.

B.M. CY 6286 ELEV. 149.812
 1/2" = 1' 0" 1/4" = 1' 0" 1/2" = 1' 0" 3/4" = 1' 0" 1" = 1' 0"
 1/2" = 1' 0" 1/4" = 1' 0" 1/2" = 1' 0" 3/4" = 1' 0" 1" = 1' 0"
 SANTA FE QUAD. 1922



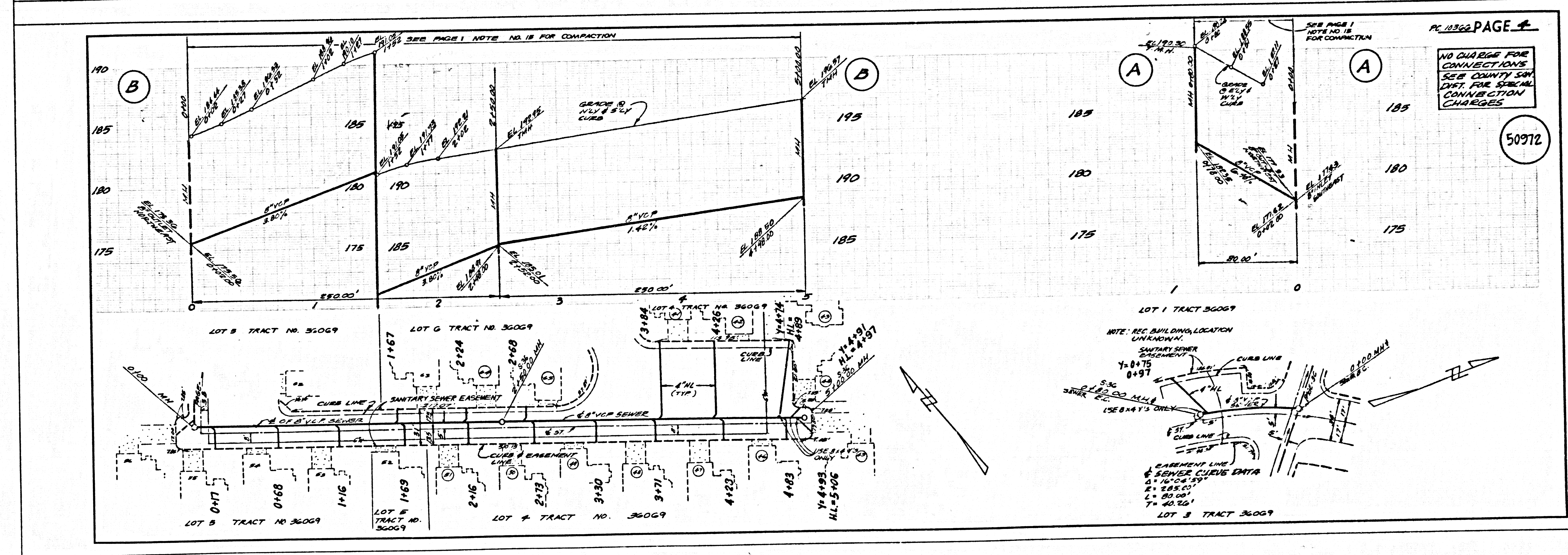
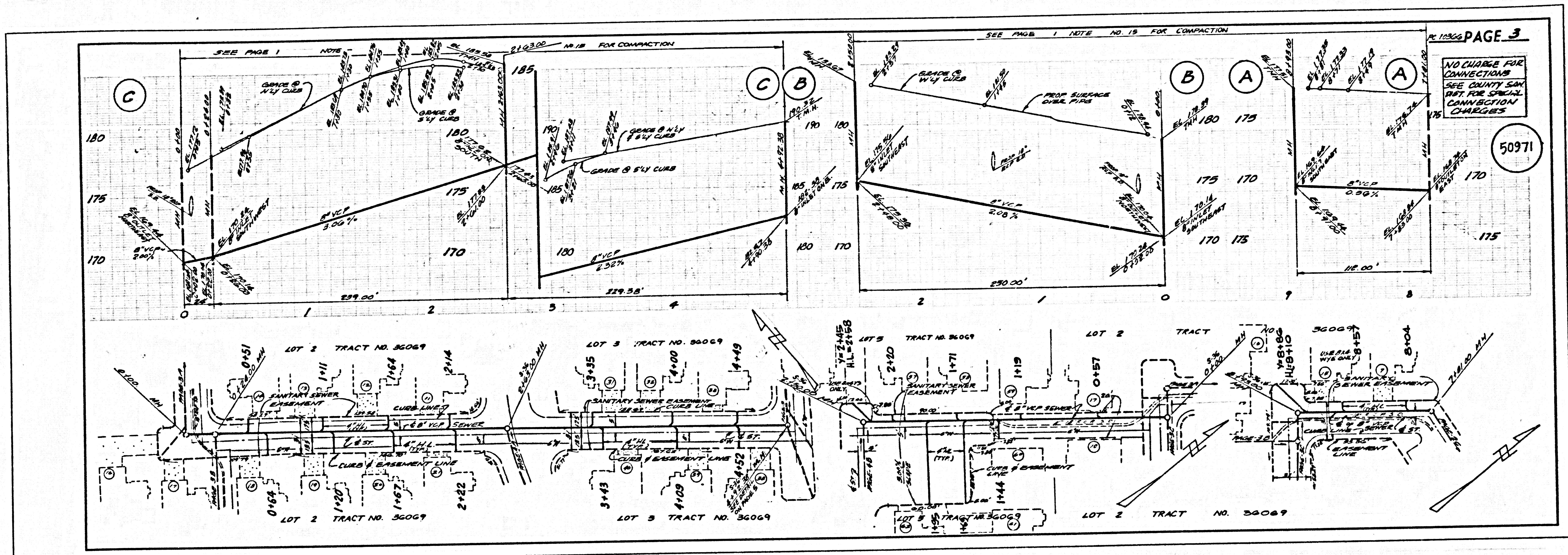
NOTE:
 NUMBERS IN CIRCLES INDICATE PAGE NO.

NO CONNECTION FOR THE DISPOSAL OF INDUSTRIAL WASTES SHALL BE MADE TO SEWERS SHOWN ON THESE DRAWINGS UNTIL A PERMIT FOR INDUSTRIAL WASTEWATER DISCHARGE HAS BEEN ISSUED BY THE SANITATION DISTRICTS FOR SAID CONNECTION.
 BEFORE BREAKING INTO OR CONSTRUCTION ON A COUNTY SANITATION DISTRICT SEWER AND PRIOR TO FINAL ACCEPTANCE OF THE PROJECT, SANITATION DISTRICT INSPECTOR SHALL BE NOTIFIED BY PHONE 818-962-8605 SO THAT REQUIRED INSPECTION CAN BE MADE.



NO CHARGE FOR CONNECTIONS
 SEE COUNTY SAN. DIST. FOR SPECIAL CONNECTION CHARGES

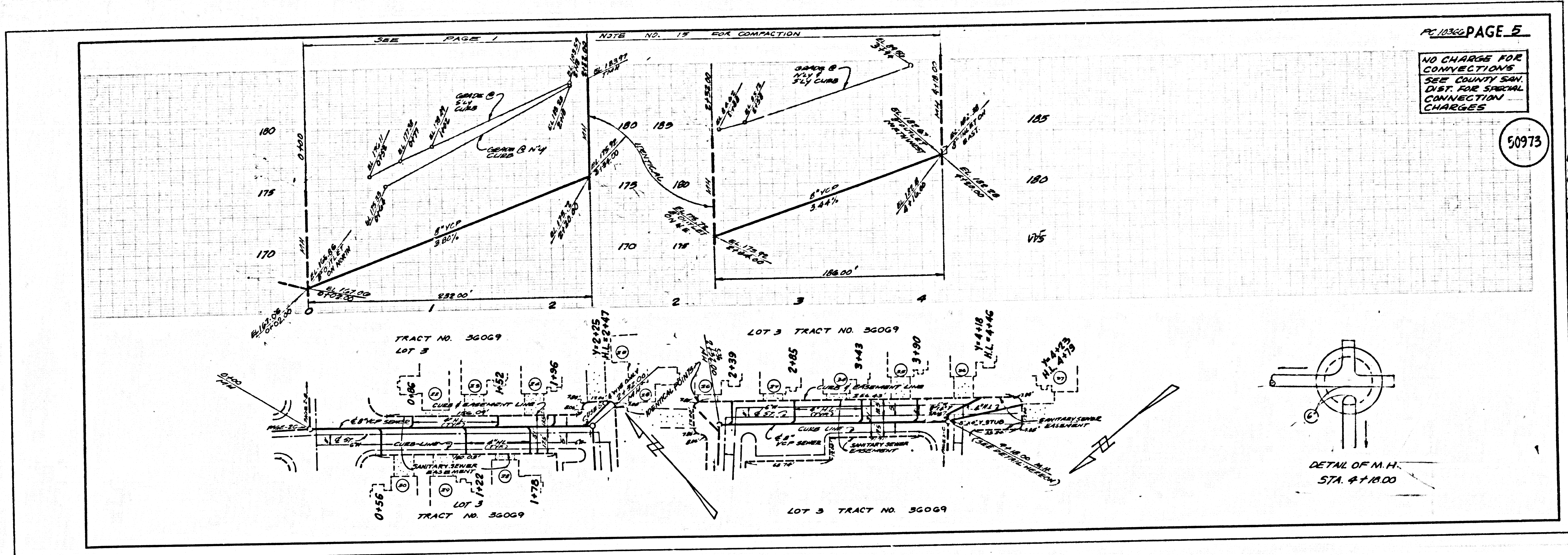
50970



50971

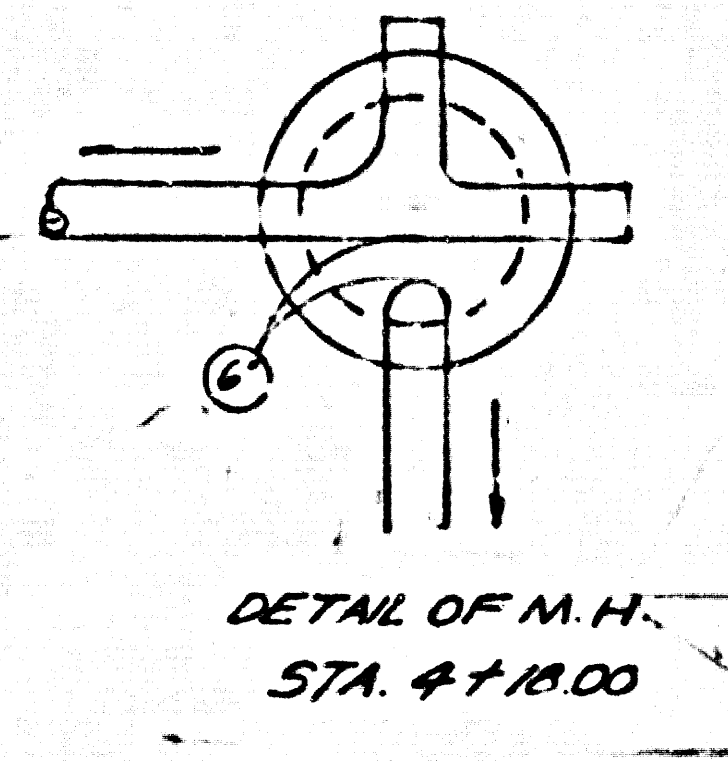
DAVIDSON

POOSE SAN ST



PC 10362 PAGE 5
 NO CHARGE FOR CONNECTIONS
 SEE COUNTY SAN. DIST. FOR SPECIAL CONNECTION CHARGES

50973



DETAIL OF M.H.
 STA. 47+10.00

PAGE

PC 10362
 10 11 12 13 14 15 16 17 18 19 20 21 22 23 24 25 26 27 28 29 30 31 32 33 34 35 36 37 38 39 40 41 42 43 44 45 46 47 48 49 50 51 52 53 54 55 56 57 58 59 60 61 62 63 64 65 66 67 68 69 70 71 72 73 74 75 76 77 78 79 80 81 82 83 84 85 86 87 88 89 90 91 92 93 94 95 96 97 98 99 100