

SANITARY SEWERS

TO BE CONSTRUCTED IN

TRACT NO 43105

PRIVATE CONTRACT NO. 10370

INDEX A-93
3 SHEETS, 5 PAGES

SCALE: VERT. 1" = 4'
HORIZ. 1" = 40'
MARCH, 1985
PREPARED IN THE OFFICES OF
ENGINEERING SERVICE CORPORATION
6011 BROADWAY, SUITE 100, LOS ANGELES, CALIF. 90048
CULVER CITY, CALIF. 90230
BY: *J.R. Hamill*
REG. C.E. NO. 13035



GENERAL NOTES:

- ELEVATIONS ARE IN FEET ABOVE U.S.C. & G.S. SEA LEVEL DATUM OF 1988.
- NO REVISIONS SHALL BE MADE IN THESE PLANS WITHOUT THE APPROVAL OF THE DIR. OF PUBLIC WORKS.
- ALL DIMENSIONS ARE TO THE CENTER LINE UNLESS OTHERWISE NOTED.
- ORDER TO WHICH THIS IMPROVEMENT IS TO BE CONSTRUCTED IS SHOWN ON PLANS AND PROFILES. GRADE POINTS FOR TOP OF CURBS, CENTER LINE OF STREETS, OR CENTER LINE OF ALLEYS ARE SHOWN BY CIRCLES ON PROFILES AT ALL POINTS BETWEEN DESIGNATED POINTS. THE GRADE SHALL BE ESTABLISHED SO AS TO CONFORM TO A STRAIGHT LINE DRAWN BETWEEN SAID DESIGNATED POINTS.
- THE PRIVATE ENGINEER SHALL FURNISH THE DEPTH OF FIN. WITH GRADE SHEETS AND STATIONING FOR ALL HOUSE LATERALS AND "T" OR "Y" BRANCHES AND SHALL PROVIDE STAKE-ON-THE-GROUND LOCATIONS WITH STATIONING IN ANY MANHOLE ALL HOUSE LATERALS SHALL BE CONSTRUCTED IN A STRAIGHT ALIGNMENT WITH STATIONING IN ANY MANHOLE AS SHOWN ON THE PLANS. HOUSE LATERALS FROM CHIMNEYS SHALL NOT HAVE AN ANGLE OF LESS THAN 45° WITH THE MAIN LINE SEWER. ANY CHANGES IN ALIGNMENT SHALL BE REQUESTED IN WRITING BY THE PRIVATE ENGINEER.
- THE PRIVATE ENGINEER SHALL FURNISH THE HOUSE LATERAL DEPTH AT THE PROPERTY LINE BELOW THE TOP OF CURB ELEVATION FOR EACH HOUSE LATERAL ON THE GRADE SHEET.
- IF WORK IS TO BE DONE IN A STATE HIGHWAY, THE CONTRACTOR MUST OBTAIN A PERMIT TO EXCAVATE IN COUNTY STREETS FROM THE COUNTY OF LOS ANGELES, DEPT. OF PUBLIC WORKS, OFFICE NO. 6, AND PAY A FEE TO THE DIRECTOR OF PUBLIC WORKS, 2250 ALCAZAR ST., LOS ANGELES, CA 90007, TO COVER THE COST OF CONSTRUCTION INSPECTION AND RECORD PLANS.
- IF WORK IS TO BE DONE IN A STATE HIGHWAY, A "LIMIT NOTICE" OBTAINED FROM THE STATE OF CALIFORNIA, DIVISION OF HIGHWAYS, 120 SOUTH SPRING STREET, LOS ANGELES, CALIFORNIA.
- APPROVAL OF THIS PLAN BY THE COUNTY OF LOS ANGELES DOES NOT CONSTITUTE A REPRESENTATION AS TO THE ACCURACY OF THE LOCATION OF OR THE EXISTENCE OR NON-EXISTENCE OF ANY UNDERGROUND UTILITY PIPE, UNLESS SHOWN WITHIN THE LIMITS OF THIS PROJECT. THIS NOTE APPLIES TO ALL PAGES.
- REFER TO SECTION 218.41 OF THE STANDARD SPECIFICATIONS, REGARDING SAFETY ORDERS.
- PRIOR TO THE ISSUANCE OF THE REQUIRED SEWER CONSTRUCTION PERMIT, THE CONTRACTOR SHALL OBTAIN A PERMIT FROM THE DEPT. OF PUBLIC WORKS, COUNTY OF LOS ANGELES, DEPT. OF PUBLIC WORKS, OFFICE NO. 6, AT THE DEPTH OF FIN. DEPTH OF FIN. COPIES OF A PERMIT TO EXCAVATE IN COUNTY STREETS FROM THE COUNTY OF LOS ANGELES, DEPT. OF PUBLIC WORKS, OFFICE NO. 6, AND PAY A FEE TO THE DIRECTOR OF PUBLIC WORKS, 2250 ALCAZAR ST., LOS ANGELES, CA 90007, TO COVER THE COST OF CONSTRUCTION INSPECTION AND RECORD PLANS.
- PERMIT TO EXCAVATE IN COUNTY STREETS FROM THE COUNTY OF LOS ANGELES, DEPT. OF PUBLIC WORKS, OFFICE NO. 6, AND PAY A FEE TO THE DIRECTOR OF PUBLIC WORKS, 2250 ALCAZAR ST., LOS ANGELES, CA 90007, TO COVER THE COST OF CONSTRUCTION INSPECTION AND RECORD PLANS.

DOUBLE SCALE

CONSTRUCTION NOTES (CONT.)

- WYE BRANCHES ONLY MAY BE USED FOR CONNECTIONS TO MAIN LINE SEWER IF A.B.S.C.P. IS USED.
- ALL JOINT BETWEEN CAST IRON PIPE AND A.B.S.C.P. SHALL BE MADE WITH APPROVED FITTINGS.
- FULL COMPLIANCE WITH PART IX OF THE SPECIAL PROVISIONS IS REQUIRED FOR THE INSTALLATION OF A.B.S. COMPOSITE PIPE AND A.B.S. SOLID WALL HOUSE LATERALS.
- MANHOLE BRICK STOP BRICKS AND CLAMPS ARE REQUIRED FOR THE CONNECTION OF A.B.S. COMPOSITE PIPE TO MANHOLE STRUCTURES.
- A.B.S. SOLID WALL PIPE MUST BE USED FOR WYE AND HOUSE LATERAL CONNECTIONS TO A.B.S. COMPOSITE MANHOLE SEWER PIPE.
- 9 DEGREE DEFLECTION COUPLERS SHALL BE USED TO ACCOMPLISH RADII OF CURVATURE LESS THAN 300'.
- A.B.S. COMPOSITE PIPE SHALL BE BEDDED IN CONFORMANCE WITH THE TABLE IN SECTION 8-31 OF PART IX OF SPECIAL PROVISIONS.

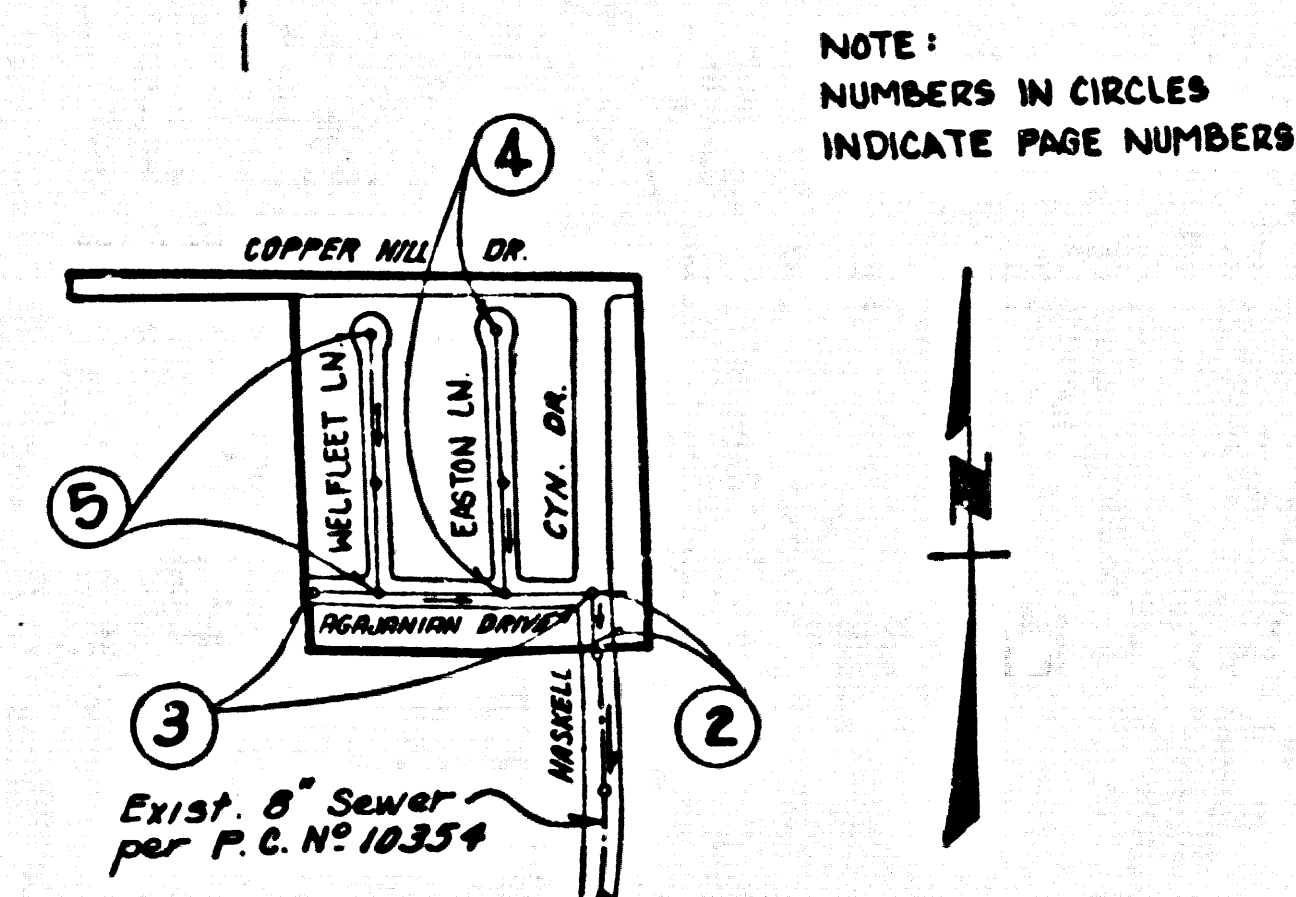
LOT 56 IS NOT SERVED WITH A HOUSE LATERAL

ISSUE NO HOUSE CONNECTION PERMITS UNTIL OUTLET SEWERS P.C. 10354 & P.C. 10370 ARE ACCEPTED FOR PUBLIC USE BY THE COUNTY OF LOS ANGELES.

NO CONNECTION FOR THE DISPOSAL OF INDUSTRIAL WASTES SHALL BE MADE TO SEWERS SHOWN ON THESE DRAWINGS UNTIL A PERMIT FOR INDUSTRIAL WASTEWATER DISCHARGE HAS BEEN ISSUED BY THE SANITATION DISTRICTS FOR SAID CONNECTION.

BEFORE BREAKING INTO OR CONSTRUCTION ON A COUNTY SANITATION DISTRICT SEWER AND PRIOR TO FINAL ACCEPTANCE OF THE PROJECT, SANITATION DISTRICT INSPECTOR SHALL BE NOTIFIED BY PHONE (818) 962-8605 SO THAT REQUIRED INSPECTION CAN BE MADE.

B.M. CL 3825 - ELEV. 1296.147
L.A.C.S. B.M. MON. IN N.E. COR. CORNER BANK OF CITY OF L.A. B.M. TAVER 13 AND 50 FT. N. OF BROADWAY ST. RD. AND 61 MI. N.W. 1/4 CR. SURAN BETH WAY MKD. (B.M. 206-7) 1966
NEWHALL QUAD. 19 78



INDEX MAP
TRACT NO 43105
P.C. NO 10370
SCALE: 1" = 600'

REVISION NO 2	DATE: 10-8-87
PAGE 2 REVISED STATIONING	
APPROVED: <i>Sauha G. Ghalib</i>	DATE
DEPARTMENT OF PUBLIC WORKS	
REVISION NO 1	DATE: 8/24/87
Pgs. 1-5 CHANGED STREET NAME FROM ABAJANIAN LANE TO ABAJANIAN DRIVE	
APPROVED: <i>Sauha G. Ghalib</i>	DATE: 8/10/87
DEPARTMENT OF PUBLIC WORKS	

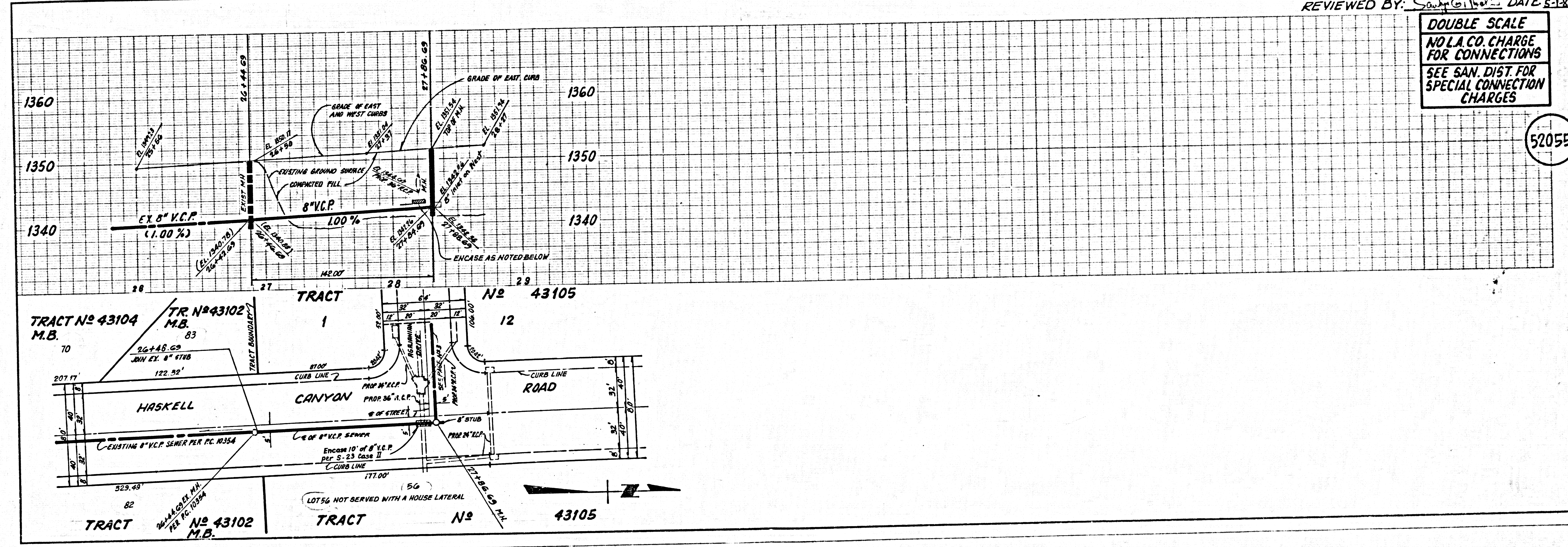
THE FOLLOWING LATEST REVISED STANDARD PLANS ON FILE IN THE OFFICE OF THE PUBLIC WORKS SHALL APPLY IN THE CONSTRUCTION OF THIS PROJECT:

LEGEND	5.7
MINIMUM PUBLIC SAFETY REQUIREMENTS	5.8
BRICK MANHOLE	5.9
STANDARD MANHOLE STOP	5.10
BRIDGING FOR SEWER PIPE	5.11
LOADING AND ENCASUREMENT	5.12
WYE OR TEE SUPPORT	5.13
ALC-WALL TRENCH WIDTHS	5.14
LOADING MANHOLE FRAME AND COVER	5.15
NON-REINFORCED PRECAST CONCRETE MANHOLE	5.16

COUNTY OF LOS ANGELES, CALIFORNIA
THOMAS R. TIDEMANSON, DIRECTOR OF PUBLIC WORKS
CHARLES W. CARRY, CHIEF ENGINEER
APPROVED: *Dean Elphinstone* 5-1-87
CHECKED: *R. Perry* 5/1/87
REG. C.E. NO. 16841
SANTA CLARITA VALLEY BLDG. DIST. 22

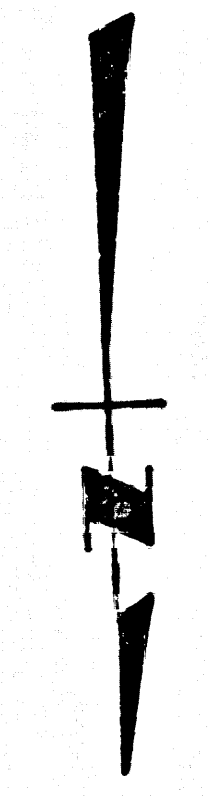
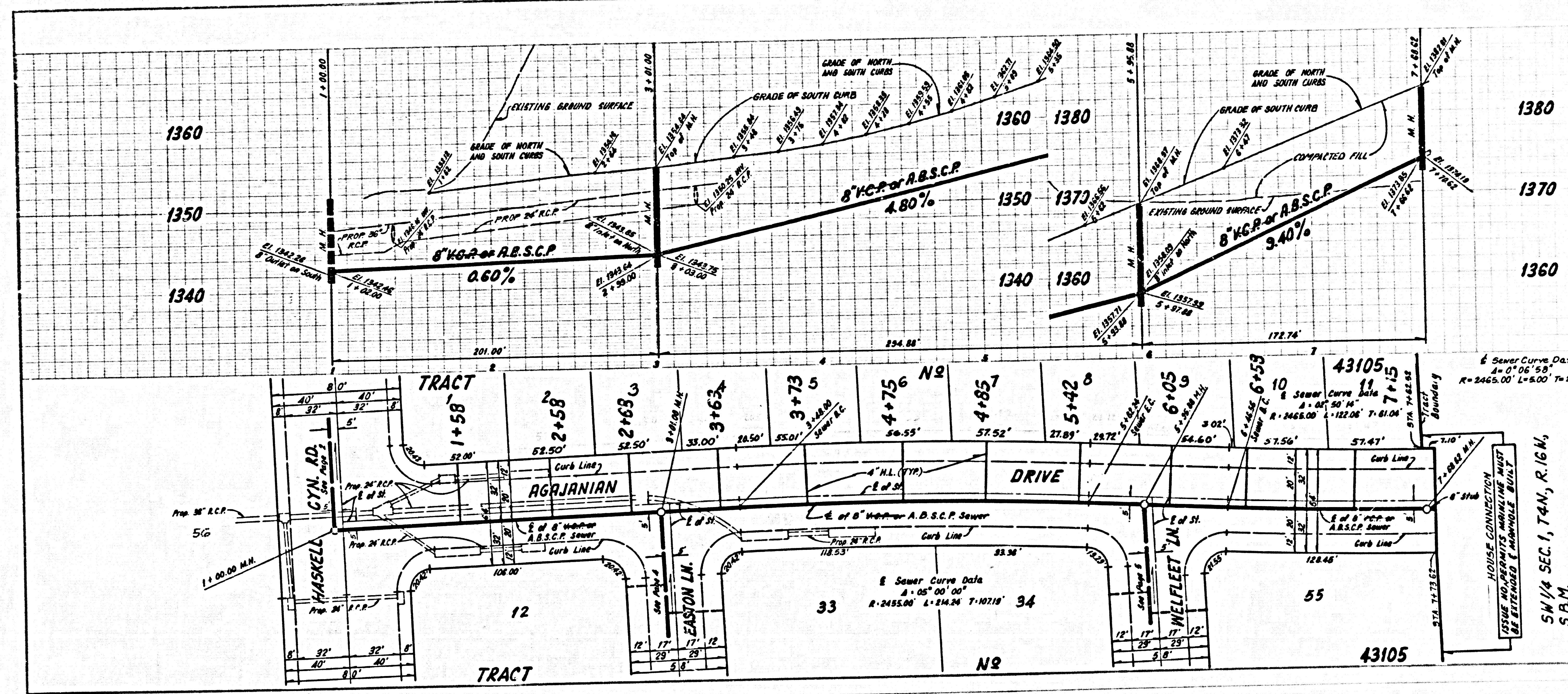
P.C. 10370 PAGE 2
REVIEWED BY: *Sauha G. Ghalib* DATE: 5-1-87

DOUBLE SCALE
NO L.A. CO. CHARGE FOR CONNECTIONS
SEE SAN. DIST. FOR SPECIAL CONNECTION CHARGES



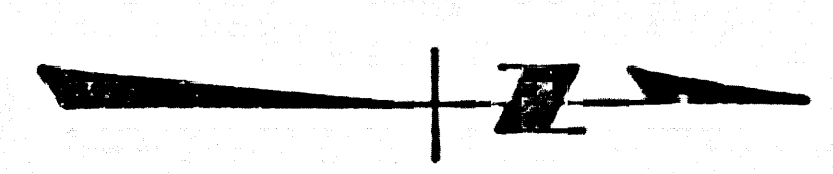
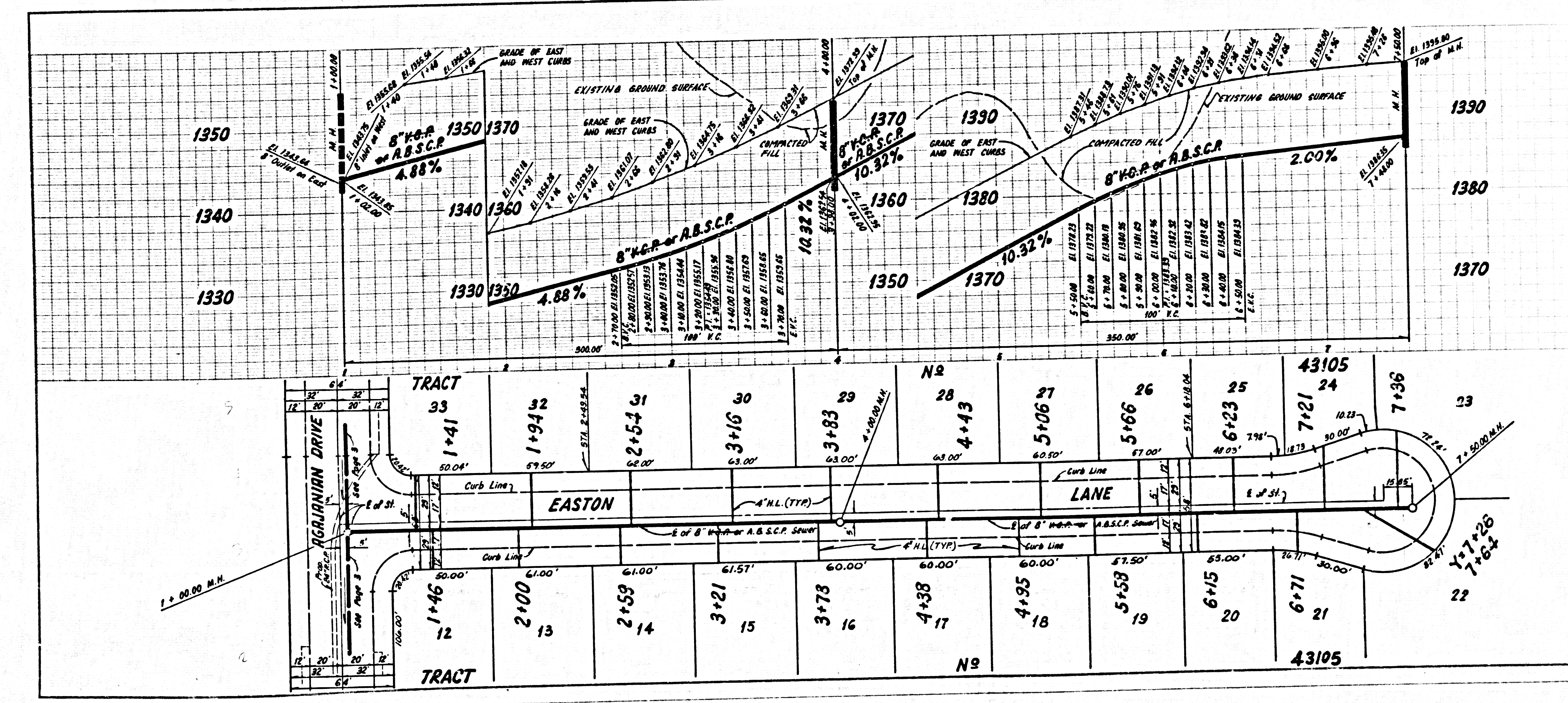
DOUBLE SCALE
 NO L.A. CO. CHARGE
 FOR CONNECTIONS
 SEE SAN. DIST. FOR
 SPECIAL CONNECTION
 CHARGES

52056



DOUBLE SCALE
 NO L.A. CO. CHARGE
 FOR CONNECTIONS
 SEE SAN. DIST. FOR
 SPECIAL CONNECTION
 CHARGES

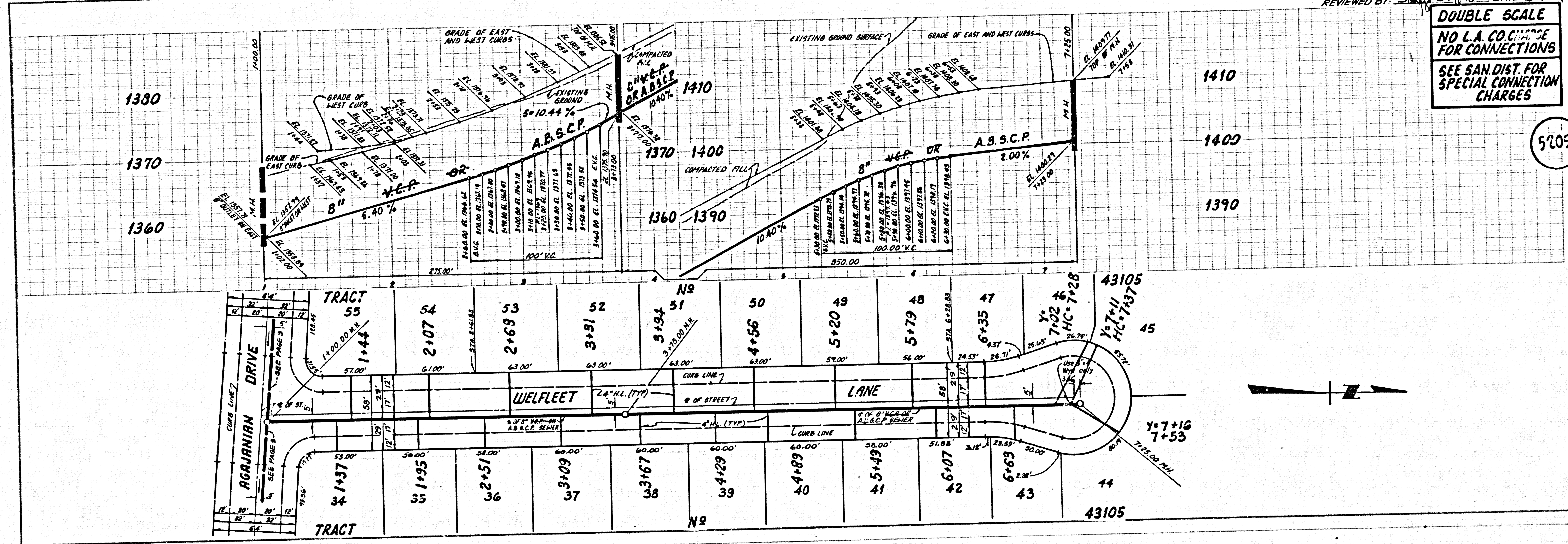
52057



REVIEWED BY: S. G. HALL DATE 5-1-87

P.C. 10370 PAGE 5
DOUBLE SCALE
NO L.A. CO. CHARGE
FOR CONNECTIONS
SEE SAN. DIST. FOR
SPECIAL CONNECTION
CHARGES

52058



15 W 43102 BC 10310

3

PAGE

11.00

M3

N6