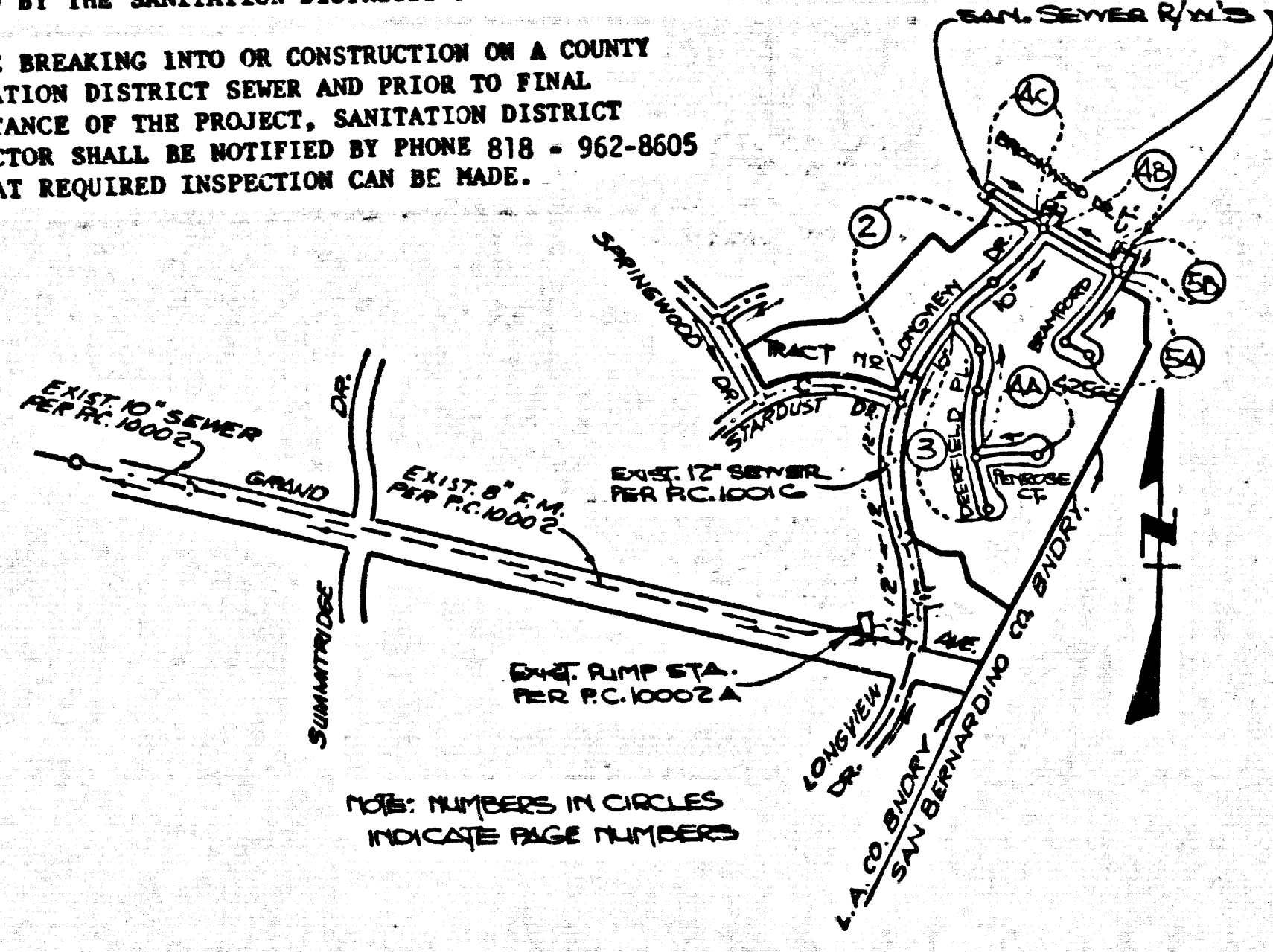


B.M. CG 3211 ELEV. 825.556
 LET IN E END C & 44 FT. & 1.00 FT.
 W/S IN INT. GROUND AVE. 4 DIAMOND BAR
 BAR. ELYD (M&D B.M. C-12)
 QUAD. 1915

NO CONNECTION FOR THE DISPOSAL OF INDUSTRIAL WASTES SHALL BE MADE TO SEWERS SHOWN ON THESE DRAWINGS UNTIL A PERMIT FOR INDUSTRIAL WASTEWATER DISCHARGE HAS BEEN ISSUED BY THE SANITATION DISTRICTS FOR SAID CONNECTION.

BEFORE BREAKING INTO OR CONSTRUCTION ON A COUNTY SANITATION DISTRICT SEWER AND PRIOR TO FINAL ACCEPTANCE OF THE PROJECT, SANITATION DISTRICT INSPECTOR SHALL BE NOTIFIED BY PHONE 818 - 962-8605 SO THAT REQUIRED INSPECTION CAN BE MADE.



INDEX MAP
 TRACT NO. 42565
 P.C. 10372
 SCALE: 1" = 600'

ISSUE NO HOUSE CONNECTION PERMITS UNTIL P.C. 10016 IS ACCEPTED

LOTS 1, 2, 3 & 4 SHALL BE SERVICED BY EXISTING 4" H.L.S. CONDUIT UNDER TRACT NO. 42558 - P.C. 10016

PRIVATE ENGINEERS NOTICE TO CONTRACTORS

The existence and location of any underground utility pipes or structures shown on these plans are obtained by search of the available records. To the best of our knowledge there are no existing utilities except as shown on these plans. The contractor is required to take due precautionary measures to protect the utility lines shown and any other lines not of record or not shown on these plans.

[Signature]
 Registered Engineer R.C.E. 19233

GENERAL NOTES CONT'D

12. ALL REFERENCES ON THIS PLAN TO THE COUNTY ENGINEER, THE ROAD DEPARTMENT, OR THE FLOOD CONTROL DISTRICT SHALL APPLY TO THOSE APPROPRIATE SECTIONS OF THE DEPARTMENT OF PUBLIC WORKS.

CONSTRUCTION NOTES CONT'D

- 16. FULL COMPLIANCE WITH PART IV OF THE SPECIAL PROVISIONS IS REQUIRED FOR THE INSTALLATION OF A-B-S COMPOSITE PIPE.
- 17. MANHOLE WATER STOP GASKETS AND GULPS ARE REQUIRED FOR THE CONNECTION OF A-B-S COMPOSITE PIPE TO MANHOLE STRUCTURES.
- 18. A-B-S SOLID WALL PIPE MUST BE USED FOR VIE AND HOUSE LATERAL CONNECTIONS TO A-B-S COMPOSITE MAINLINE SEWER PIPE.
- 19. A-B-S COMPOSITE PIPE SHALL BE INSTALLED IN CONFORMANCE WITH THE TABLE IN SECTION B-3.1.1 OF PART IV OF THE SPECIAL PROVISIONS.
- 20. THREE DEGREE DEFLECTION COUPLERS ARE REQUIRED FOR RADII OF CURVATURE LESS THAN 300 FEET WHEN USING 8" A-B-S COMPOSITE PIPE.
- 21. NO CONNECTIONS FOR DISPOSAL OF INDUSTRIAL WASTE IS ALLOWED IF A-B-S COMPOSITE PIPE IS USED.
- 22. SEWER LINE CURVATURE SHALL NOT BE ACHIEVED BY PULLING OF JOINTS OR BEVELING PIPE ENDS WHEN USING PLASTIC PIPE INCLUDING A-B-S COMPOSITE PIPE.
- 23. ALL VIE AND/OR HOUSE LATERALS ARE TO BE LOCATED AT LEAST FIVE FEET APART & WHEN POSSIBLE NOT CLOSER THAN FIVE FEET TO ANY MANHOLE.
- 24. A-B-S SOLID WALL PIPE IS NOT ACCEPTABLE FOR USE AS MAINLINE SEWER.
- 25. ONE VIE BRANCHES ARE TO BE USED FOR CONNECTION TO A-B-S COMPOSITE MAINLINE SEWER PIPE.
- 26. ALL REFERENCES ON THIS PLAN TO THE COUNTY ENGINEER, THE ROAD DEPARTMENT, OR THE FLOOD CONTROL DISTRICT SHALL APPLY TO THOSE APPROPRIATE SECTIONS OF THE DEPARTMENT OF PUBLIC WORKS.

GENERAL NOTES & DOUBLE SCALE

- 1. ELEVATIONS ARE IN FEET ABOVE U.S.C. & G.S. SEA LEVEL DATUM (1929).
- 2. NO REVISIONS SHALL BE MADE IN THESE PLANS WITHOUT THE APPROVAL OF THE DEPARTMENT OF PUBLIC WORKS.
- 3. NO REPRESENTATIVE OF THE COUNTY ENGINEER WILL SURVEY OR LAY OUT ANY PORTION OF THE WORK.
- 4. GRADES TO WHICH THIS IMPROVEMENT IS TO BE CONSTRUCTED ARE SHOWN ON PLANS AND PROFILES. GRADE POINTS FOR TOP OF CURBS, CENTER LINE OF STREETS, OR CENTER LINE OF ALLEYS ARE SHOWN BY CIRCLES ON PROFILES. AT ALL POINTS BETWEEN DESIGNATED POINTS THE GRADE SHALL BE ESTABLISHED SO AS TO CONFORM TO A STRAIGHT LINE BETWEEN SAID DESIGNATED POINTS.
- 5. THE PRIVATE ENGINEER SHALL FURNISH THE COUNTY ENGINEER WITH GRADE SHEETS AND STATIONING FOR ALL HOUSE LATERALS AND 7" OR 8" BRANCHES AND SHALL PROVIDE STAKES FOR THEM AT THEIR PROPER LOCALITIES WITH STATIONING PLAINLY MARKED. ALL HOUSE LATERALS SHALL BE CONSTRUCTED IN A STRAIGHT ALIGNMENT AT RIGHT ANGLES FROM THE MAIN LINE SEWER EXCEPT AS SHOWN ON THE PLANS. HOUSE LATERALS FROM CURBS SHALL NOT HAVE AN ANGLE OF LESS THAN 45° WITH THE MAIN LINE SEWER. ANY CHANGE IN ALIGNMENT SHALL BE REQUESTED IN WRITING BY THE PRIVATE ENGINEER.
- 6. THE PRIVATE ENGINEER SHALL FURNISH THE HOUSE LATERAL DEPTH AT THE PROPERTY LINE BELOW THE TOP OF CURB ELEVATION FOR EACH HOUSE LATERAL ON THE GRADE SHEET.
- 7. BEFORE WORK CAN BE STARTED, THE CONTRACTOR MUST OBTAIN A PERMIT TO EXCAVATE IN COUNTY STREETS FROM THE L.A. COUNTY ROAD DEPT., DISTRICT OFFICE NO. _____, AND PAY A FEE TO THE COUNTY ENGINEER, 800 S. VERMONT AVENUE, LOS ANGELES, CA 90014 TO COVER THE COST OF CONSTRUCTION INSPECTION AND RECORD PLANS.
- 8. IF WORK IS TO BE DONE IN A STATE HIGHWAY, A PERMIT MUST BE OBTAINED FROM THE STATE OF CALIFORNIA, DIVISION OF HIGHWAYS, 180 SOUTH SPRING STREET, LOS ANGELES, CALIFORNIA.
- 9. APPROVAL OF THIS PLAN BY THE COUNTY OF LOS ANGELES DOES NOT CONSTITUTE A REPRESENTATION AS TO THE ACCURACY OF THE LOCATION OF OR THE EXISTENCE OR NON-EXISTENCE OF ANY UNDERGROUND UTILITY PIPE, OR STRUCTURE WITHIN THE LIMITS OF THIS PROJECT. THIS NOTE APPLIES TO ALL PAGES.
- 10. REFER TO SECTION 7.16.41 OF THE STANDARD SPECIFICATIONS, REGARDING SAFETY ORDERS.
- 11. PRIOR TO THE RESUME OF THE REQUIRED SEWER CONSTRUCTION PLANS, THE CONTRACTOR SHALL OBTAIN AND FILE WITH THE COUNTY ENGINEER COPIES OF A PERMIT TO EXCAVATE IN COUNTY STREETS FROM THE LOS ANGELES COUNTY ROAD DEPARTMENT, A PERMIT FOR EXCAVATIONS AND TRENCHES FROM THE STATE OF CALIFORNIA, DIVISION OF INDUSTRIAL SAFETY AND A CERTIFICATE OF WORKERS COMPENSATION INSURANCE WITH THE DEPARTMENT OF COUNTY ENGINEER, 800 SOUTH VERMONT, RM. 406, LOS ANGELES, CALIFORNIA 90014. THESE AS THE CERTIFICATE INCLUDES TO BE NOTICED 30 DAYS PRIOR TO CANCELLATION OF POLICY.

CONSTRUCTION NOTES

- 1. WORK SHALL BE CONSTRUCTED ACCORDING TO THE STANDARD SPECIFICATIONS FOR PUBLIC WORKS CONSTRUCTION 1984 EDITION (WITH 1984 SUPPLEMENTS) AND COUNTY ENGINEER SPECIAL PROVISIONS FOR THE CONSTRUCTION OF SANITARY SEWERS DATED _____, SEE LIST _____ AND SHALL BE PROSECUTED ONLY IN THE PRESENCE OF THE COUNTY ENGINEER.
- 2. THE CONTRACTOR SHALL NOTIFY THE CONSTRUCTION DIVISION, PUBLIC WORKS DEPT. BY TEL. (213) 226-8281 AT LEAST 24 HOURS BEFORE STARTING ANY WORK UNDER THIS CONTRACT.
- 3. HOUSE LATERALS TO BE CONSTRUCTED WITH MANHOLE AT PROPERTY LINE 6 FEET BELOW CURB GRADE EXCEPT AS NOTED.
- 4. VIE OR VIE BRANCHES MAY BE USED FOR CONNECTIONS TO MAINLINE SEWERS IF A-B-S PIPE IS USED.
- 5. ALL STRUCTURES SHALL BE EITHER BRICK MANHOLES PER 2.0 OR PRECAST CONCRETE MANHOLES PER 2.0 EXCEPT AS NOTED.
- 6. PROVIDE STAKES ON THE PROPERTY LINE OR PROPERTY LINES PRODUCED AT RIGHT ANGLES TO THE SEWER LINE AT THE CENTER LINE OF EACH MANHOLE.
- 7. MANHOLE TOPS IN UNIMPROVED PORTS OF WAY TO BE SIX INCHES ABOVE FINISHED GRADE.
- 8. WITHIN CLAY PIPE JOINTS SHALL BE TYPE "D" OR "E" PER STANDARD SPECIFICATIONS SECTION 802-6.
- 9. IF A POWER POLE IS WITHIN THREE FEET OF THE SEWER, THE SEWER SHALL BE ENCASED PER 8-26 CASE 8, TWO FEET ON EACH SIDE FROM THE POINT OF INTERFERENCE.
- 10. IF A POWER POLE IS WITHIN THREE FEET OF THE SEWER, THE SEWER SHALL BE ENCASED PER 8-26 CASE 8, TWO FEET ON EACH SIDE FROM THE POINT OF INTERFERENCE.
- 11. DURING THE COURSE OF CONSTRUCTION IT IS DETERMINED THAT THERE IS LESS THAN FOUR FEET OF COVER OVER THE TOP OF A MAIN LINE OR HOUSE LATERAL SEWER WHICH IS NOT INDICATED ON THE PLANS, THE PIPE SHALL BE ENCASED PER 8-26 CASE 8 UNLESS OTHERWISE APPROVED BY THE COUNTY ENGINEER.
- 12. ALL JOINTS BETWEEN CAST IRON PIPE AND WITHIN CLAY PIPE SHALL BE MADE WITH A RUBBER BLEVE JOINT, TYPE "D" OR "E", WITH BRASS IF NECESSARY PER STANDARD SPECIFICATIONS SECTION 302-3.
- 13. ALL JOINTS BETWEEN CAST IRON PIPE SHALL BE MADE WITH APPROVED FITTINGS.
- 14. ALL JOINTS BETWEEN PRECAST CONCRETE MANHOLES PER 2.0 OR PRECAST CONCRETE MANHOLES PER 2.0 EXCEPT AS NOTED SHALL BE MADE WITH APPROVED FITTINGS PER SECTION 302-3 OF THE STANDARD SPECIFICATIONS AND SPECIAL PROVISIONS.
- 15. RESURFACE ALL TRENCHES WITHIN PAVED AREAS TO MEET L.A. COUNTY ROAD DEPT. OR CALIFORNIA STATE HIGHWAY REQUIREMENTS IN ACCORDANCE WITH PERMITS.
- 16. FULL COMPLIANCE WITH SECTION 302-3.1 OF THE SPECIAL PROVISIONS WILL BE REQUIRED FOR BACKFILL IN STREETS. CERTIFICATION OF BACKFILL COMPACTION AND SAND EQUIVALENTS BY A QUALIFIED, REGISTERED TESTING LABORATORY SHALL BE PROVIDED BY THE PERMITTEE PRIOR TO THE RESUME OF PARTIAL ACCEPTANCE.
- 17. SPECIAL BACKFILL IN EXISTING CONSTRUCTION (A) BACKFILL TRENCH AND REFILL OTHER EXISTING SO AS TO ACHIEVE THE NATURAL OR FINISHED GRADE AND (B) BACKFILL AND EARTH REPLACED SHALL BE COMPACTED TO A MINIMUM OF 90% OF MAXIMUM DENSITY PER A.S.T.M. METHOD OF TEST OR 95% AS APPROVED. ACCEPTABLE CERTIFICATION OF SUCH COMPACTION SHALL BE SUBMITTED TO THE CONSTRUCTION DIVISION, PUBLIC WORKS DEPT.

TRACT No 42565
 PRIVATE CONTRACT NO. 10372

INDEX: U-145, H-3
 W.S. 39-D, 4
 3 SHEETS, 5 PAGES

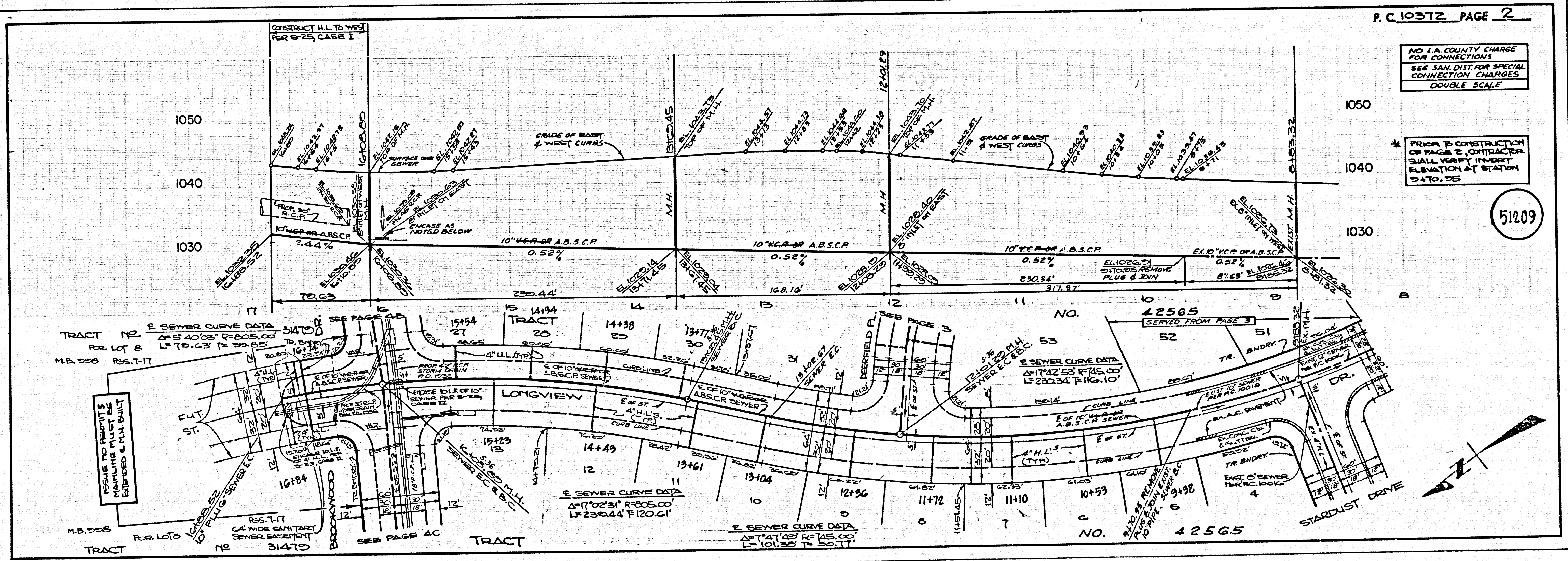
51208

SCALE: VERT. 1" = 8'
 HORIZ. 1" = 40'
 FEBRUARY, 1985
 PREPARED IN THE OFFICES OF
 LIND & HILLERD, INC.
 2525 HUNTINGTON DRIVE
 SAN MARINO, CA 91078
 BY: *[Signature]*
 REG. C. E. No. 19233
 JOHN R. SARRACINO

THE FOLLOWING LATEST REVISED STANDARD PLANS ON FILE IN THE OFFICE OF THE COUNTY ENGINEER SHALL APPLY IN THE CONSTRUCTION OF THIS PROJECT:

STANDARD PUBLIC SAFETY REQUIREMENTS	8-1
STANDARD MANHOLE	8-2
STANDARD MANHOLE STOP	8-3
STANDARD FOR SEWER PIPE	8-4
CHASING AND ENCASING	8-5
WYS ON THE SUPPORT	8-6
ALLOWANCE TRENCH WIDTH	8-7
LOCKING MANHOLE FRAMES AND COVERS	8-8
NON-REINFORCED PRECAST CONCRETE MANHOLES	8-9
RECORDING REQUIREMENTS FOR PLASTIC PIPE	8-10
SPECIAL MANHOLE LATERALS	8-11

COUNTY OF LOS ANGELES, CALIFORNIA
 THOMAS A. TIDEMANSON, DIRECTOR, DEPARTMENT OF PUBLIC WORKS
 APPROVED: *[Signature]* 7/6/85
 CHARLES W. CARRY, CHIEF ENGINEER
 APPROVED: *[Signature]* 7/6/85
 CHECKED: *[Signature]* 7-8-85
 REG. C. E. NO. 33194
 SAN DIMAS BLDG. DIST. 10



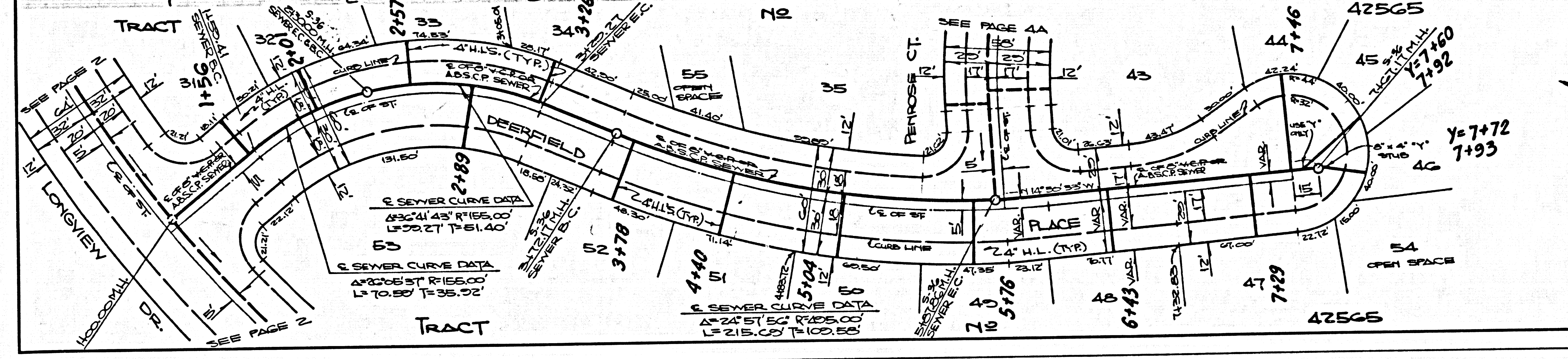
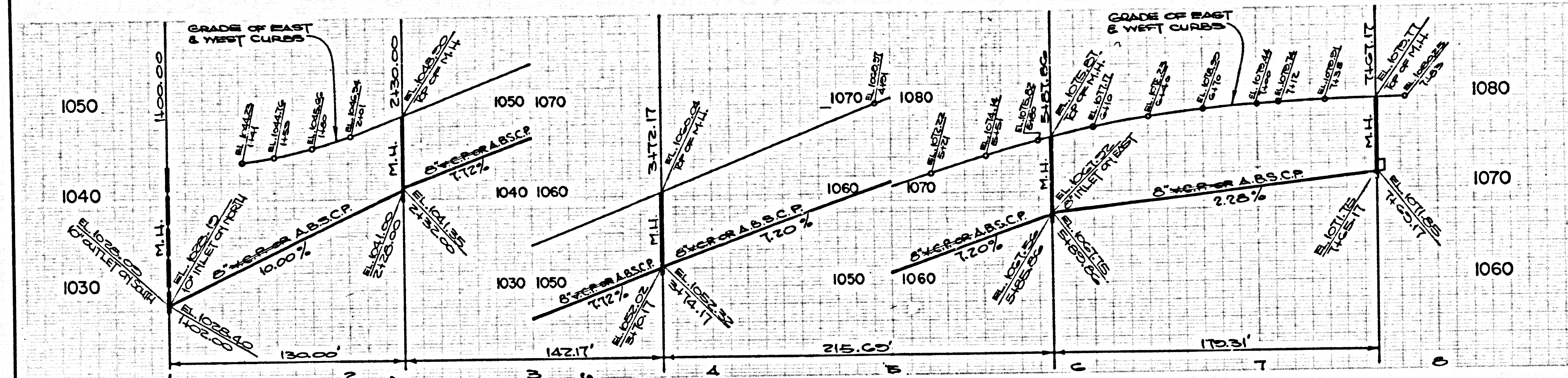
NO L.A. COUNTY CHARGE FOR CONNECTIONS
 SEE SAN. DIST. FOR SPECIAL CONNECTION CHARGES
 DOUBLE SCALE

* PRIOR TO CONSTRUCTION OR BEFORE CONTRACTOR SHALL VERIFY INVERT ELEVATION AT STATION D.A.T.O. 35

51209

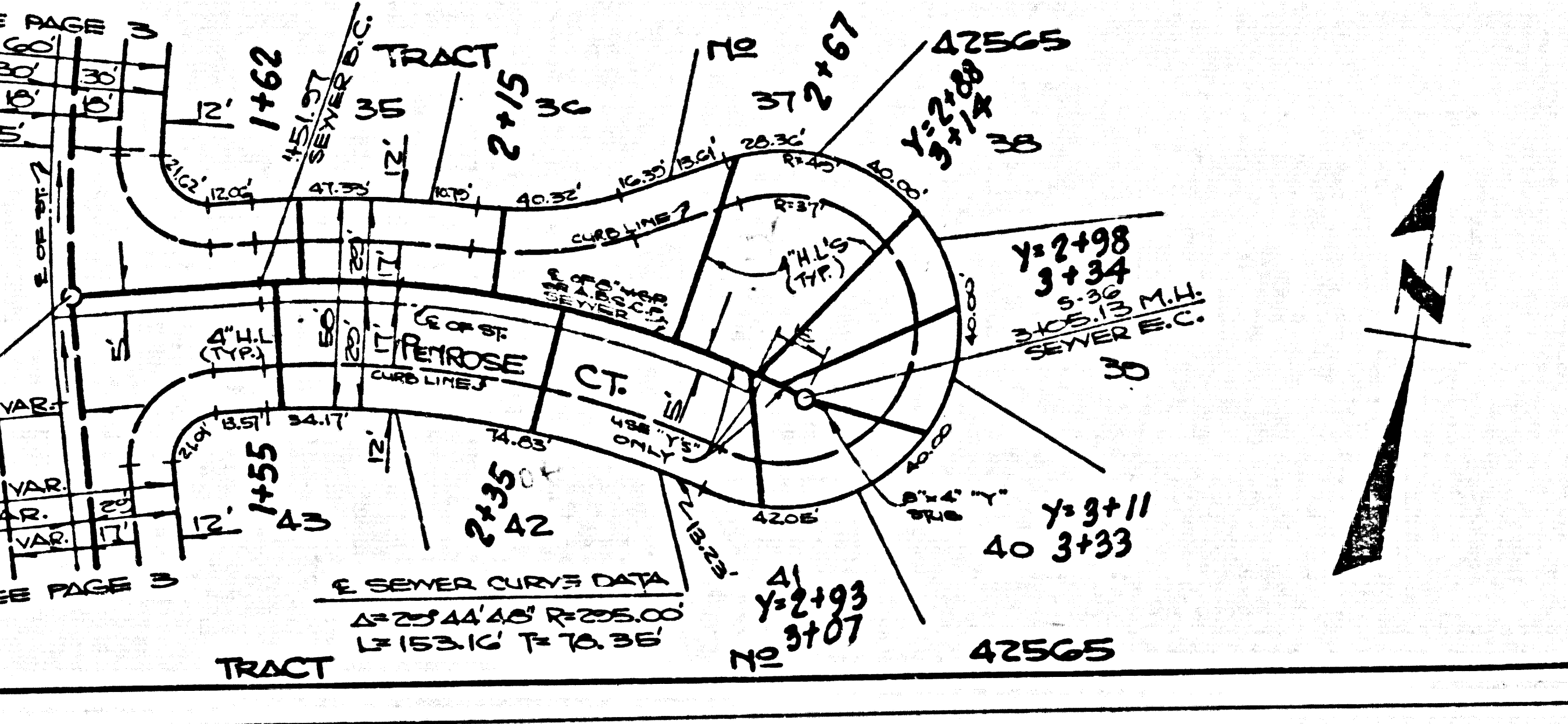
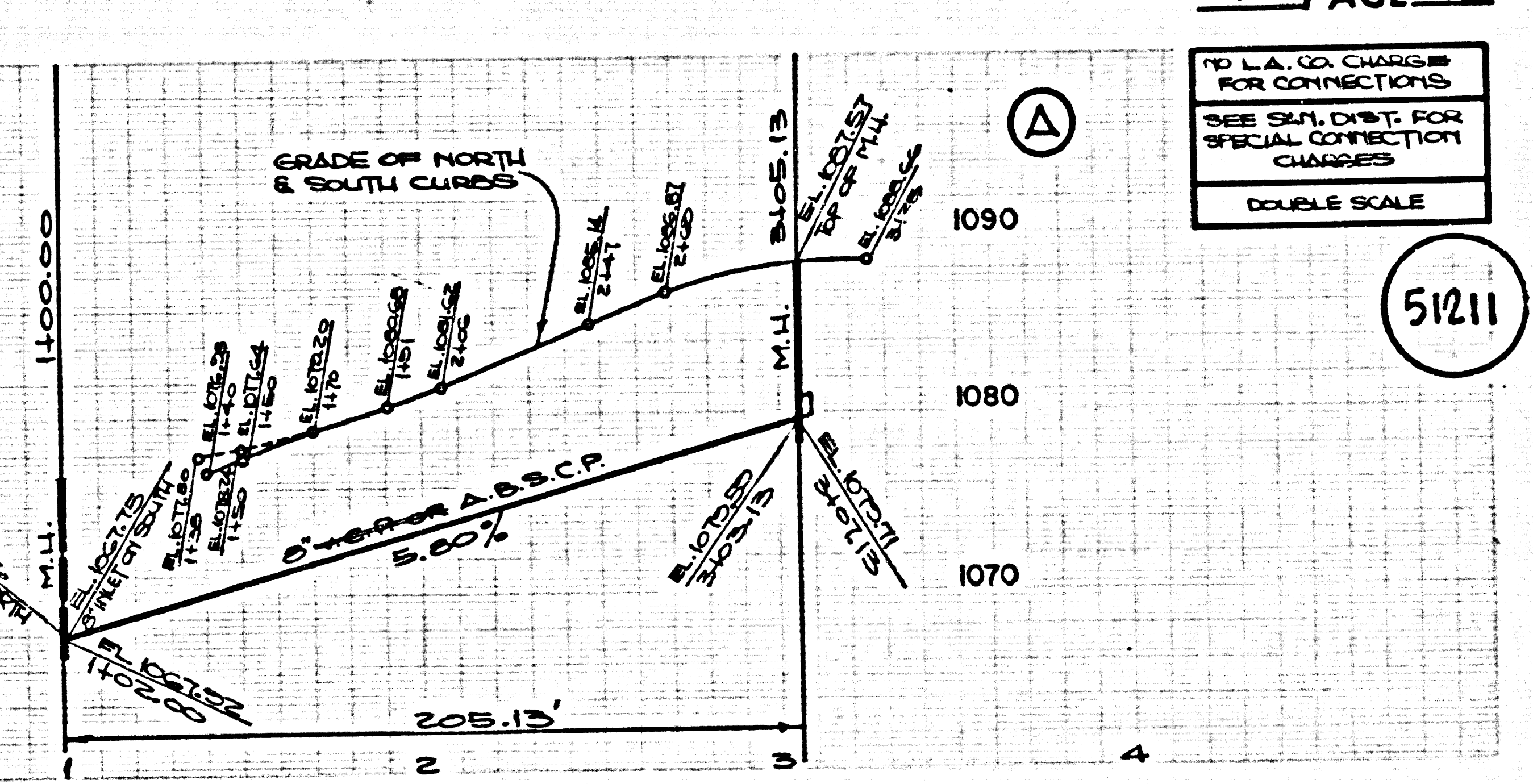
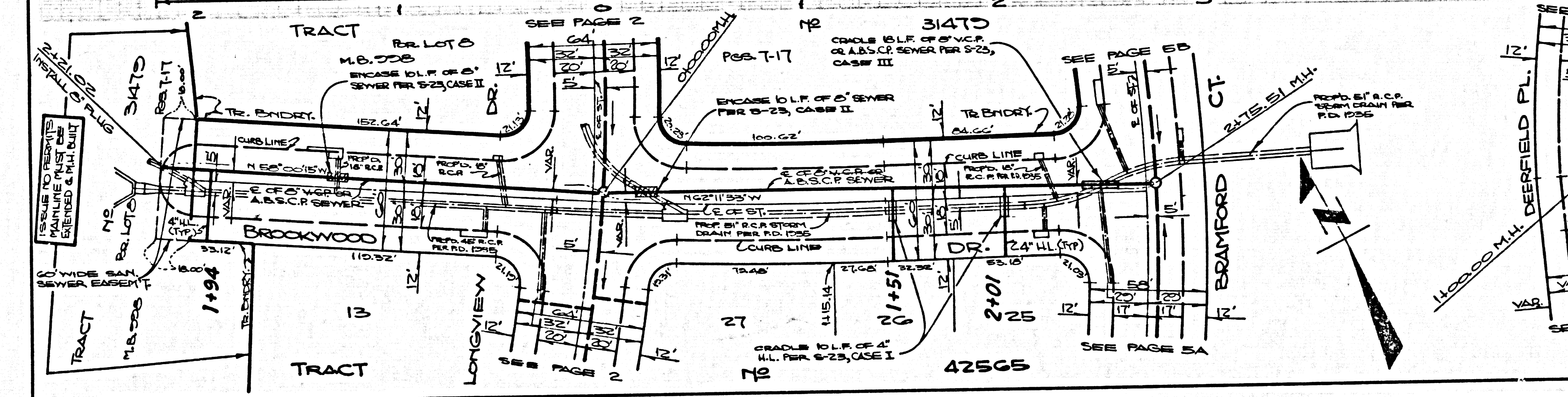
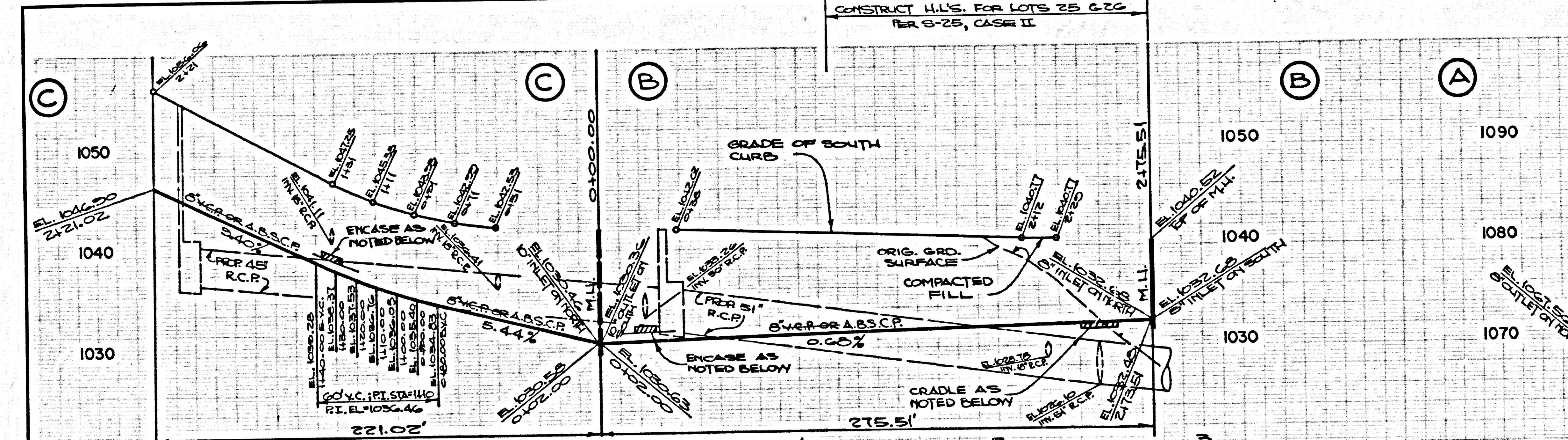
NO L.A. CO. CHARGE FOR CONNECTIONS
SEE SAN. DIST. FOR SPECIAL CONNECTION CHARGES
DOUBLE SCALE

51210



NO L.A. CO. CHARGE FOR CONNECTIONS
SEE SAN. DIST. FOR SPECIAL CONNECTION CHARGES
DOUBLE SCALE

51211



51210 BC 10372

51211 BC 10372

NO L.A. COUNTY CHARGE FOR CONNECTIONS
5' MIN. DIA. DIST. FOR SPECIAL CONNECTION CHARGES
DOUBLE SCALE

51212

