

SANITARY SEWERS

TO BE CONSTRUCTED IN
TRACT NO. 43523

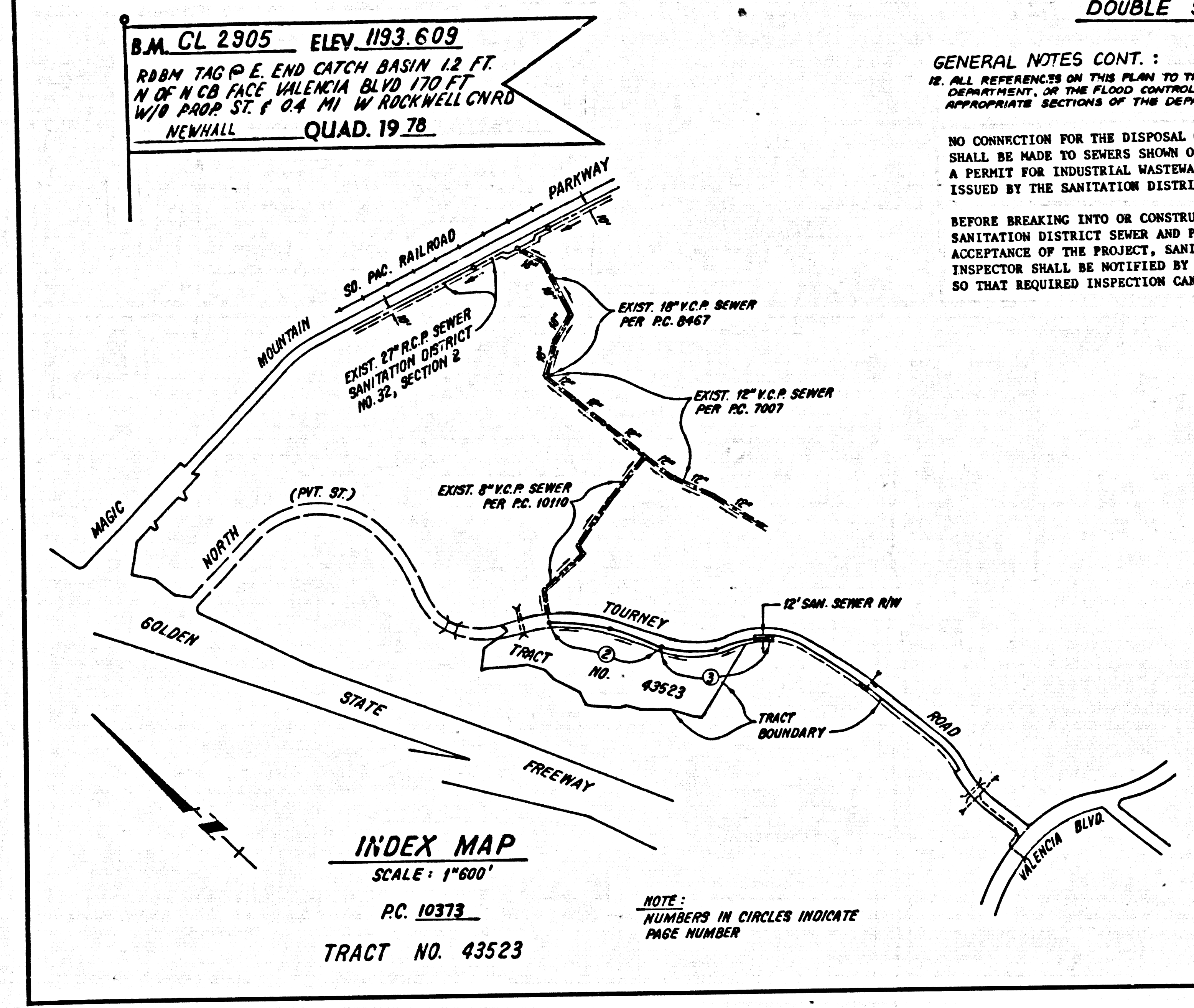
PRIVATE CONTRACT NO. 10373

INDEX A-64
2 SHEETS, 3 PAGES

SCALE: V.H. 1"=8'
H.O. 1"=100'
MARCH, 1985
PREPARED IN THE OFFICES OF
ENGINEERING ASSOCIATES
1230 BURBANK BLVD., VAN NUYS
CALIFORNIA 91411 (818) 787-8550
BY: *Nancy C. Kelly*
REG. C. E. No. 21893

51047

1
ETC 10373
 ESCR. ON GRN. TRACT



DOUBLE SCALE

GENERAL NOTES CONT.:
 10. ALL REFERENCES ON THIS PLAN TO THE COUNTY ENGINEER, THE ROAD DEPARTMENT, OR THE FLOOD CONTROL DISTRICT SHALL APPLY TO THOSE APPROPRIATE SECTIONS OF THE DEPARTMENT OF PUBLIC WORKS.

NO CONNECTION FOR THE DISPOSAL OF INDUSTRIAL WASTES SHALL BE MADE TO SEWERS SHOWN ON THESE DRAWINGS UNTIL ACCEPTANCE OF THE PROJECT, SANITATION DISTRICT INSPECTOR SHALL BE NOTIFIED BY PHONE 818 - 962-8605 SO THAT REQUIRED INSPECTION CAN BE MADE.

BEFORE BREAKING INTO OR CONSTRUCTION ON A COUNTY SANITATION DISTRICT SEWER AND PRIOR TO FINAL ACCEPTANCE OF THE PROJECT, SANITATION DISTRICT INSPECTOR SHALL BE NOTIFIED BY PHONE 818 - 962-8605 SO THAT REQUIRED INSPECTION CAN BE MADE.

GENERAL NOTES:

- ELEVATIONS ARE IN FEET ABOVE U.S.C. & G.S. SEA LEVEL DATUM OF 1985.
- NO REVISIONS SHALL BE MADE IN THESE PLANS WITHOUT THE APPROVAL OF THE COUNTY ENGINEER.
- NO REPRESENTATIVE OF THE COUNTY ENGINEER WILL SURVEY OR LAY OUT ANY PORTION OF THE WORK.
- GRADES TO WHICH THE IMPROVEMENT IS TO BE CONSTRUCTED ARE SHOWN ON PLANS AND PROFILES. GRADE POINTS FOR TOP OF CURBS, CENTER LINE OF STREETS, OR CENTER LINE OF ALLEYS ARE SHOWN BY CIRCLES ON PROFILES AT ALL POINTS BETWEEN DESIGNATED POINTS THE GRADE SHALL BE ESTABLISHED SO AS TO CONFORM TO A STRAIGHT LINE DRAWN BETWEEN SAID DESIGNATED POINTS.
- THE PRIVATE ENGINEER SHALL FURNISH THE COUNTY ENGINEER WITH GRADE SHEETS AND STATIONING FOR ALL HOUSE LATERALS AND "Y" OR "T" BRANCHES AND SHALL PROVIDE STAKES FOR THEM AT THEIR PROPER LOCATIONS WITH STATIONING PLAINLY MARKED. ALL HOUSE LATERALS SHALL BE CONSTRUCTED IN A STRAIGHT ALIGNMENT AT RIGHT ANGLES FROM THE 8" MAIN LINE SEWER EXCEPT AS SHOWN ON THE PLANS. HOUSE LATERALS FROM CHIMNEYS SHALL NOT HAVE AN ANGLE OF LESS THAN 45° WITH THE MAIN LINE SEWER. ANY CHANGE IN ALIGNMENT SHALL BE REQUESTED IN WRITING BY THE PRIVATE ENGINEER.
- THE PRIVATE ENGINEER SHALL FURNISH THE HOUSE LATERAL DEPTH AT THE PROPERTY LINE BELOW THE TOP OF CURB ELEVATION FOR EACH HOUSE LATERAL ON THE GRADE SHEET.
- BEFORE WORK CAN BE STARTED, THE CONTRACTOR MUST OBTAIN A PERMIT TO EXCAVATE IN COUNTY STREETS FROM THE L.A. COUNTY ROAD DEPT., DISTRICT OFFICE NO. 8, AND PAY A FEE TO THE COUNTY ENGINEER, 818 VERNON AVENUE, LOS ANGELES, CA 90001, TO COVER THE COST OF CONSTRUCTION INSPECTION AND RECORD PLANS.
- IF WORK IS TO BE DONE IN A STATE HIGHWAY, A PERMIT MUST BE OBTAINED FROM THE STATE OF CALIFORNIA, DIVISION OF HIGHWAY, 120 SOUTH SPRING STREET, LOS ANGELES, CALIFORNIA.
- APPROVAL OF THIS PLAN BY THE COUNTY OF LOS ANGELES DOES NOT CONSTITUTE A REPRESENTATION AS TO THE ACCURACY OF THE LOCATION OF OR THE EXISTENCE OR NON-EXISTENCE OF ANY UNDERGROUND UTILITY PIPE, OR STRUCTURE WITHIN THE LIMITS OF THIS PROJECT. THIS NOTE APPLIES TO ALL PAGES.
- REFER TO SECTION 7.18.41 OF THE STANDARD SPECIFICATIONS, REGARDING SAFETY ORDERS.
- PRIOR TO THE ISSUANCE OF THE REQUIRED SEWER CONSTRUCTION PERMIT, THE CONTRACTOR SHALL OBTAIN AND FILE WITH THE COUNTY ENGINEER COPIES OF A PERMIT TO EXCAVATE IN COUNTY STREETS FROM THE LOS ANGELES COUNTY ROAD DEPARTMENT, COUNTY ENGINEER OFFICE NO. 8, AND A CERTIFICATE OF COMPLIANCE FROM THE STATE OF CALIFORNIA, DIVISION OF INDUSTRIAL SAFETY AND A CERTIFICATE OF WORKER'S COMPENSATION INSURANCE WITH THE DEPARTMENT OF COUNTY ENGINEER, 818 SOUTH VERNON, 9TH FLOOR, LOS ANGELES, CALIFORNIA 90001. NAMES AS THE CERTIFICATE HOLDER TO BE NOTIFIED 30 DAYS PRIOR TO CANCELLATION OF POLICY.

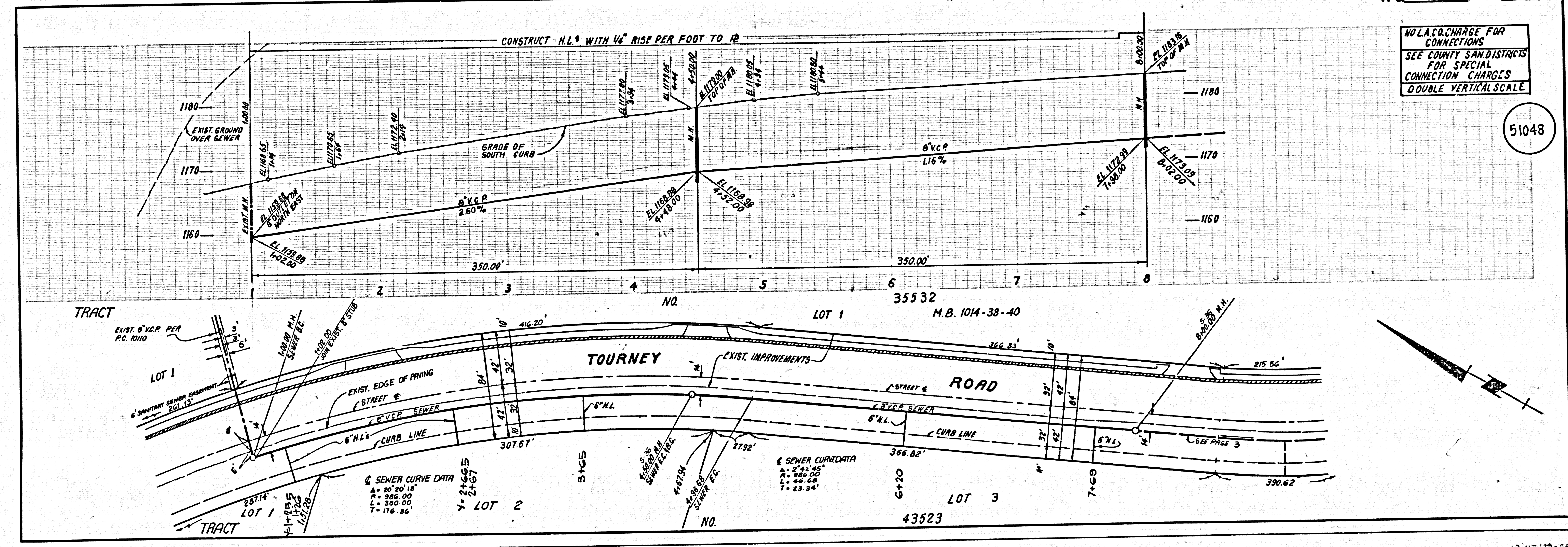
CONSTRUCTION NOTES:

- WORK SHALL BE CONSTRUCTED ACCORDING TO THE STANDARD SPECIFICATIONS FOR PUBLIC WORKS CONSTRUCTION (1982 EDITION WITH 88 SUPPLEMENTS) AND COUNTY ENGINEER SPECIAL PROVISIONS FOR THE CONSTRUCTION OF SANITARY SEWERS DATED 1-25-82. ALL WORK SHALL BE PROTECTED ONLY IN THE PRESENCE OF THE DEPT. OF PUBLIC WORKS.
- THE CONTRACTOR SHALL NOTIFY THE CONSTRUCTION DIVISION - PUBLIC WORKS TELEPHONE (818) 226-8821, AT LEAST THIRTY-FOUR HOURS BEFORE STARTING ANY WORK UNDER THE CONTRACT.
- HOUSE LATERALS TO BE CONSTRUCTED WITHIN 48 HOURS AT PROPERTY LINE 8 FEET BELOW CURB GRADE EXCEPT AS NOTED.
- WYE OR Tee BRANCHES MAY BE USED FOR CONNECTIONS TO MANHOLE SEWERS EXCEPT AS NOTED.
- ALL STRUCTURES SHALL BE EITHER BRICK MANHOLES PER 8-3 OR PRECAST CONCRETE MANHOLES PER 8-38, EXCEPT AS NOTED.
- PROVIDE STAKES ON THE PROPERTY LINE OR PROPERTY LINES PRODUCED AT RIGHT ANGLES TO THE SEWER LINE AT THE CENTER LINE OF EACH MANHOLE.
- MANHOLE TOPS IN UNIMPROVED RIGHTS OF WAY TO BE SIX INCHES ABOVE FINISHED GRADE.
- WITHEPRED CLAY PIPE JOINTS SHALL BE TYPE "D" OR "B" PER STANDARD SPECIFICATIONS SECTION 818-5.
- IF A POWER POLE IS WITHIN THREE FEET OF THE SEWER, THE SEWER SHALL BE ENCASED, PER 8-28 CASE B, TWO FEET ON EACH SIDE FROM THE POINT OF INTERFERENCE.
- IF DURING THE COURSE OF CONSTRUCTION IT IS DETERMINED THAT THERE IS LESS THAN FOUR FEET OF COVER OVER THE TOP OF A MAIN LINE OR HOUSE LATERAL SEWER WHICH IS NOT INDICATED ON THE PLANS, THE PIPE SHALL BE ENCASED PER 8-28 CASE B UNLESS OTHERWISE APPROVED BY THE COUNTY ENGINEER.
- ALL JOINTS BETWEEN CAST IRON PIPE AND WITHEPRED CLAY PIPE SHALL BE MADE WITH A RUBBER SLEEVE JOINT, TYPE "D" OR "B" (WITH BUSHING, IF NECESSARY) PER STANDARD SPECIFICATIONS SECTION 308-2.
- SEWERS TO BE TESTED FOR LEAKAGE PER SECTION 308-1.9 OF THE STANDARD SPECIFICATIONS AND SPECIAL PROVISIONS.
- RESURFACE ALL TRENCHES WITHIN PAVED AREAS TO MEET L.A. COUNTY ROAD DEPT. OR CALIFORNIA STATE HIGHWAY REQUIREMENTS IN ACCORDANCE WITH PERMITS.
- FULL COMPLIANCE WITH SECTION 308-1.3.3 OF THE SPECIAL PROVISIONS WILL BE REQUIRED FOR BACKFILL IN STREETS CERTIFICATION OF BACKFILL COMPACTION AND SAND EQUIVALENTS BY A QUALIFIED, REGISTERED TESTING LABORATORY SHALL BE PROVIDED BY THE PERMITTEE PRIOR TO THE ISSUANCE OF A CERTIFICATE OF PARTIAL ACCEPTANCE.
- SPECIAL BACKFILL IN EXISTENT CONSTRUCTION: (A) BACKFILL TRENCH AND REPLACE OTHER EARTH SO AS TO ACHIEVE THE NATURAL OR FINISHED GRADES AND SLOPES SHOWN ON THE GRADING PLAN APPROVED FOR THE DEVELOPMENT BY THE BUILDING DIVISION. (B) ALL BACKFILL AND EARTH REPLACED SHALL BE COMPACTED TO A MINIMUM OF 90% OF MAXIMUM DENSITY PER A.S.T.M. METHOD OF TEST D1557 AS MODIFIED. ACCEPTABLE CERTIFICATION OF SUCH COMPACTION SHALL BE SUBMITTED TO THE CONSTRUCTION DIVISION - PUBLIC WORKS.

THE FOLLOWING LATEST REVISED STANDARD PLANS ON FILE IN THE OFFICE OF THE DEPT. OF PUBLIC WORKS SHALL APPLY IN THE CONSTRUCTION OF THIS PROJECT:

SEWER	8-1
SEWER MANHOLES	8-2
SEWER MANHOLES	8-3
SEWER MANHOLES	8-4
SEWER MANHOLES	8-5
SEWER MANHOLES	8-6
SEWER MANHOLES	8-7
SEWER MANHOLES	8-8
SEWER MANHOLES	8-9
SEWER MANHOLES	8-10
SEWER MANHOLES	8-11
SEWER MANHOLES	8-12
SEWER MANHOLES	8-13
SEWER MANHOLES	8-14
SEWER MANHOLES	8-15
SEWER MANHOLES	8-16
SEWER MANHOLES	8-17
SEWER MANHOLES	8-18
SEWER MANHOLES	8-19
SEWER MANHOLES	8-20
SEWER MANHOLES	8-21
SEWER MANHOLES	8-22
SEWER MANHOLES	8-23
SEWER MANHOLES	8-24
SEWER MANHOLES	8-25
SEWER MANHOLES	8-26
SEWER MANHOLES	8-27
SEWER MANHOLES	8-28
SEWER MANHOLES	8-29
SEWER MANHOLES	8-30
SEWER MANHOLES	8-31
SEWER MANHOLES	8-32
SEWER MANHOLES	8-33
SEWER MANHOLES	8-34
SEWER MANHOLES	8-35
SEWER MANHOLES	8-36
SEWER MANHOLES	8-37
SEWER MANHOLES	8-38
SEWER MANHOLES	8-39
SEWER MANHOLES	8-40
SEWER MANHOLES	8-41
SEWER MANHOLES	8-42
SEWER MANHOLES	8-43
SEWER MANHOLES	8-44
SEWER MANHOLES	8-45
SEWER MANHOLES	8-46
SEWER MANHOLES	8-47
SEWER MANHOLES	8-48
SEWER MANHOLES	8-49
SEWER MANHOLES	8-50
SEWER MANHOLES	8-51
SEWER MANHOLES	8-52
SEWER MANHOLES	8-53
SEWER MANHOLES	8-54
SEWER MANHOLES	8-55
SEWER MANHOLES	8-56
SEWER MANHOLES	8-57
SEWER MANHOLES	8-58
SEWER MANHOLES	8-59
SEWER MANHOLES	8-60
SEWER MANHOLES	8-61
SEWER MANHOLES	8-62
SEWER MANHOLES	8-63
SEWER MANHOLES	8-64
SEWER MANHOLES	8-65
SEWER MANHOLES	8-66
SEWER MANHOLES	8-67
SEWER MANHOLES	8-68
SEWER MANHOLES	8-69
SEWER MANHOLES	8-70
SEWER MANHOLES	8-71
SEWER MANHOLES	8-72
SEWER MANHOLES	8-73
SEWER MANHOLES	8-74
SEWER MANHOLES	8-75
SEWER MANHOLES	8-76
SEWER MANHOLES	8-77
SEWER MANHOLES	8-78
SEWER MANHOLES	8-79
SEWER MANHOLES	8-80
SEWER MANHOLES	8-81
SEWER MANHOLES	8-82
SEWER MANHOLES	8-83
SEWER MANHOLES	8-84
SEWER MANHOLES	8-85
SEWER MANHOLES	8-86
SEWER MANHOLES	8-87
SEWER MANHOLES	8-88
SEWER MANHOLES	8-89
SEWER MANHOLES	8-90
SEWER MANHOLES	8-91
SEWER MANHOLES	8-92
SEWER MANHOLES	8-93
SEWER MANHOLES	8-94
SEWER MANHOLES	8-95
SEWER MANHOLES	8-96
SEWER MANHOLES	8-97
SEWER MANHOLES	8-98
SEWER MANHOLES	8-99
SEWER MANHOLES	8-100

COUNTY OF LOS ANGELES, CALIFORNIA
 T.A. TIENANSON, DIRECTOR OF PUBLIC WORKS
 APPROVED *Edgar D. Smith* 6/18/85
 CHECKED *Sally E. Hall* 6-18-85
 M.B. C.E. NO. 93134
 SANTA CLARITA VALLEY BLDG. DIST. 82
 CHARLES W. CERRY, CHIEF ENGINEER
 CO. SAN. DIST. NO. 32
 APPROVED *Dean K. Miller* 6-18-85
 J.P. OFFICE ENGINEER

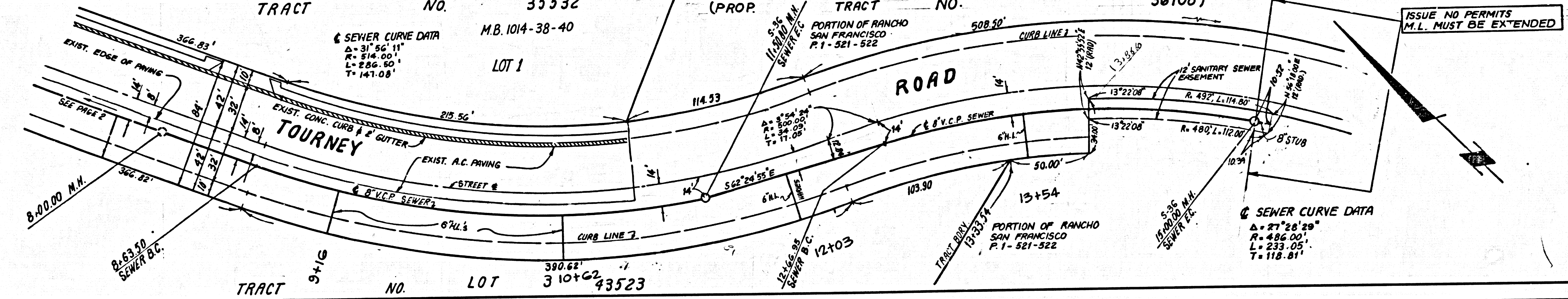
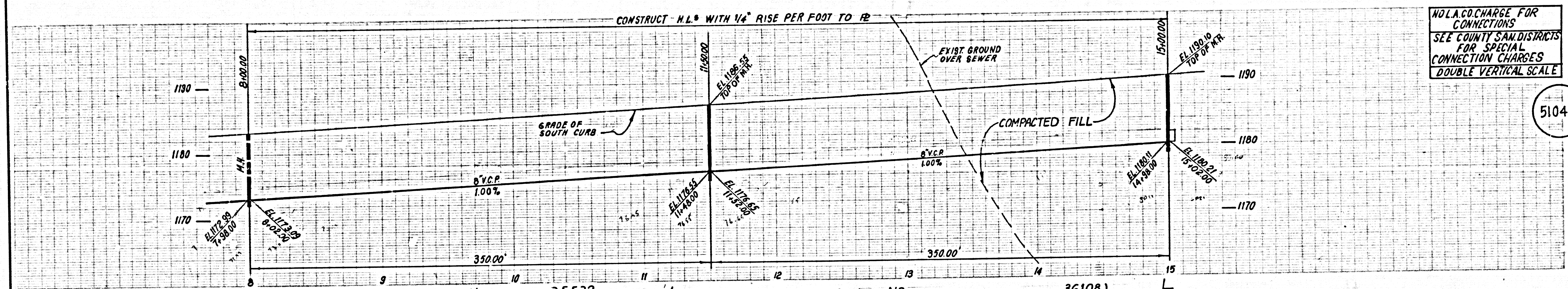


NO L.A. CO. CHARGE FOR CONNECTIONS
 SEE COUNTY SAN. DISTRICTS FOR SPECIAL CONNECTION CHARGES
 DOUBLE VERTICAL SCALE

51048

NOLA. CO. CHARGE FOR CONNECTIONS
SEE COUNTY SAN. DISTRICTS FOR SPECIAL CONNECTION CHARGES
DOUBLE VERTICAL SCALE

51049



ISSUE NO PERMITS
M.L. MUST BE EXTENDED

PAGE

BC 10313
ESTD. MAP NO. 43253