

SANITARY SEWERS

TO BE CONSTRUCTED IN TRACT NO. 43508

PRIVATE CONTRACT NO. 10374 U-32-C, 4E5

2 SHEETS, 4 PAGES SCALE: VERT. 1"=4' HOR. 1"=40'

51669

MARCH, 1985 PREPARED BY THE OFFICES OF JOHN B. ABELL, INC. 140 W. ORANGE COVINA, CA 91723 (918)915-7671

GENERAL NOTES: CONT.

ALL REFERENCES ON THIS PLAN TO THE COUNTY ENGINEER, THE ROAD DEPARTMENT, OR THE FLOOD CONTROL DISTRICT SHALL APPLY TO THOSE APPROPRIATE SECTIONS OF THE DEPARTMENT OF PUBLIC WORKS.

Revision No. 1 Date 8-6-85 PAGE 4A change MH STA to 2+23.20 FROM 2+21.91 PAGE 4B add 2 H.L.'s at stations 1+21 and 4+24.1 APPROVED Sandy G. Hehl 8-7-85 Office of County Engineer (Date)

S.M. CY 7758 ELEV. 332.560 RDBM Tag 1 Ft W/O BCR 42 Ft N 1/2 115 Ft W/O E Int. San Gabriel Blvd. 2 Hill Dr. Baseline QUAD. 19Z5

CONSTRUCTION NOTES: CONT.

1. WYE BRANCHES ONLY MAY BE USED FOR CONNECTIONS TO MAINLINE SEWER IF PVC SEWER PIPE IS USED. ALL JOINTS BETWEEN CAST IRON PIPE AND PVC SEWER PIPE SHALL BE MADE WITH APPROVED FITTINGS. FULL COMPLIANCE WITH PART IV OF THE SPECIAL PROVISIONS AND CRITERIA FOR USE OF PVC SEWER PIPE IS REQUIRED FOR THE INSTALLATION OF PVC SEWER PIPE.

BEFORE BREAKING INTO OR CONSTRUCTION ON A COUNTY SANITATION DISTRICT SEWER AND PRIOR TO FINAL ACCEPTANCE OF THE PROJECT, SANITATION DISTRICT INSPECTOR SHALL BE NOTIFIED BY PHONE 818 - 962-8605 SO THAT REQUIRED INSPECTION CAN BE MADE.

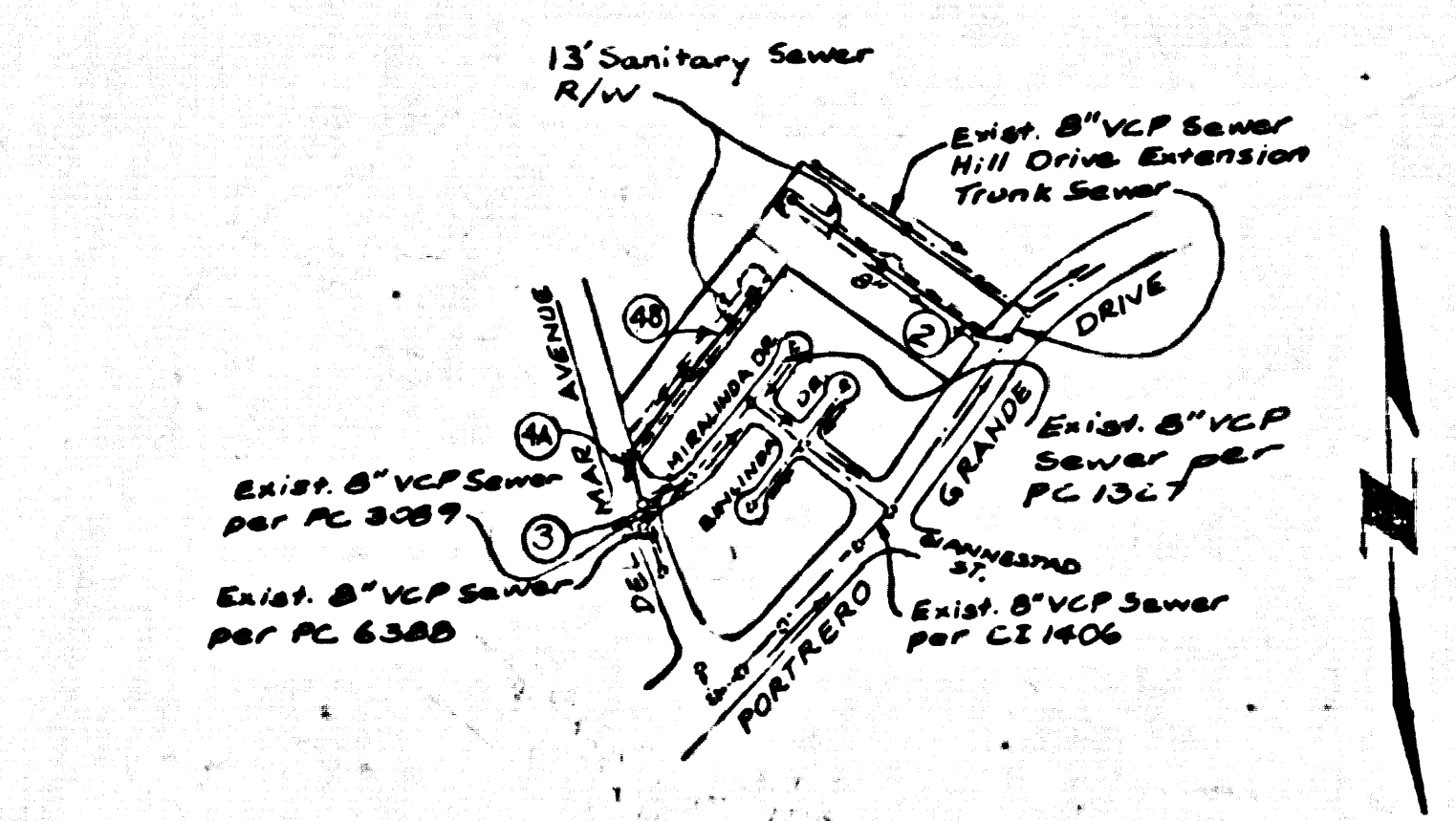
GENERAL NOTES:

- 1. ELEVATIONS ARE IN FEET ABOVE U.S.C. & G.S. SEA LEVEL DATUM OF 1988. 2. NO REVISIONS SHALL BE MADE IN THESE PLANS WITHOUT THE APPROVAL OF THE COUNTY ENGINEER. 3. NO REPRESENTATIVE OF THE COUNTY ENGINEER WILL SURVEY OR LAY OUT ANY PORTION OF THE WORK. 4. GRADES TO WHICH THIS IMPROVEMENT IS TO BE CONSTRUCTED ARE SHOWN ON PLANS AND PROFILES. GRADE POINTS FOR TOP OF CURBS, CENTER LINE OF ALLEYS ARE SHOWN BY CIRCLES ON PROFILES AT ALL POINTS BETWEEN DESIGNATED POINTS THE GRADE SHALL BE ESTABLISHED SO AS TO CONFORM TO A STRAIGHT LINE DRAWN BETWEEN SAID DESIGNATED POINTS. 5. THE PRIVATE ENGINEER SHALL FURNISH THE COUNTY ENGINEER WITH GRADE SHEETS AND STATIONINGS FOR ALL HOUSE LATERALS AND "T" OR "Y" BRANCHES AND SHALL PROVIDE STAKES FOR THEM AT THEIR PROPER LOCATIONS WITH STATIONING PLAINLY MARKED AND "T" OR "Y" BRANCHES SHALL BE CONSTRUCTED AT RIGHT ANGLES FROM THE MAIN LINE SEWER EXCEPT ALL HOUSE LATERALS SHALL BE CONSTRUCTED AT AN ANGLE OF LESS THAN 45° WITH THE MAIN LINE SEWER. ANY CHANGE IN ALIGNMENT SHALL BE REQUESTED IN WRITING BY THE PRIVATE ENGINEER.

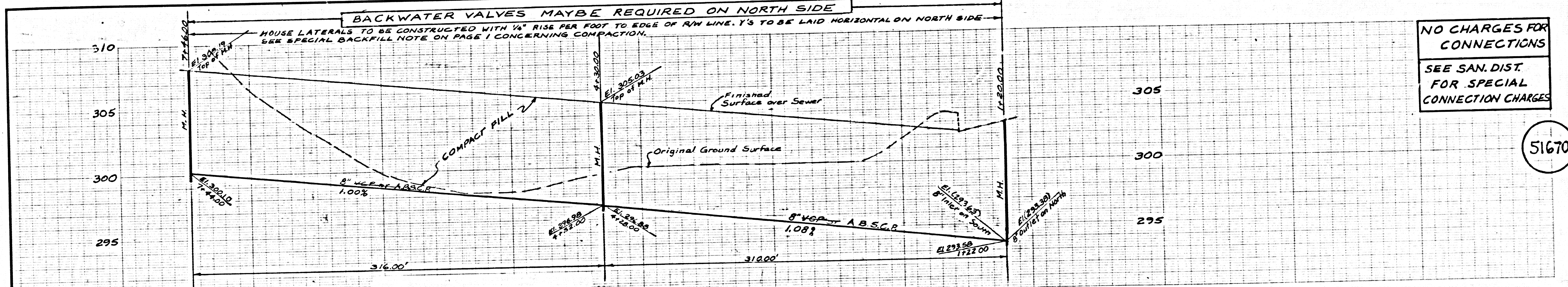
CONSTRUCTION NOTES:

- 1. WORK SHALL BE CONSTRUCTED ACCORDING TO THE STANDARD SPECIFICATIONS FOR PUBLIC WORKS CONSTRUCTION (1979 EDITION WITH SUPPLEMENTS) AND COUNTY ENGINEER'S SPECIFICATIONS FOR THE CONSTRUCTION OF SANITARY SEWERS DATED MARCH 24, 1976. 2. THE CONTRACTOR SHALL NOTIFY THE CONSTRUCTION DIVISION PUBLIC WORKS BY TELEPHONE (918) 915-7671 AT LEAST TWENTY-FOUR HOURS BEFORE ANY WORK UNDER THIS CONTRACT. 3. HOUSE LATERALS TO BE CONSTRUCTED WITH INVERTS AT R/W LINE 6 FEET BELOW CURB GRADE EXCEPT AS NOTED. 4. PIPE OR Tee BRANCHES MAY BE USED FOR CONNECTIONS TO MAINLINE SEWERS EXCEPT AS NOTED. 5. ALL STRUCTURES SHALL BE EITHER BRICK MANHOLES PER S-38 OR PRECAST CONCRETE MANHOLES PER S-38 EXCEPT AS NOTED. 6. PROVIDE STAKES ON THE PROPERTY LINE OR PROPERTY LINES PRODUCED AT RIGHT ANGLES TO THE SEWER LINE AT THE CENTER LINE OF EACH MANHOLE. 7. MANHOLE TOPS IN IMPROVED RIGHTS OF WAY TO BE TO FINISHED GRADE. 8. WITHIN CLAY PIPE JOINTS SHALL BE TYPE "O" OR "D" PER STANDARD SPECIFICATIONS SECTION 308-2. 9. IF A POWER POLE IS WITHIN THREE FEET OF THE SEWER, THE SEWER SHALL BE ENCASED PER S-21 CASE II, TWO FEET ON EACH SIDE FROM THE POINT OF INTERFERENCE. 10. DURING THE COURSE OF CONSTRUCTION IT IS DETERMINED THAT THERE IS LESS THAN FOUR FEET OF COVER OVER THE TOP OF A MAIN LINE OR HOUSE LATERAL SEWER WHICH IS NOT INDICATED ON THE PLANS, THE PIPE SHALL BE ENCASED PER S-21 CASE II UNLESS OTHERWISE APPROVED BY THE COUNTY ENGINEER. 11. ALL JOINTS BETWEEN CAST IRON PIPE AND WITHIN CLAY PIPE SHALL BE MADE WITH A RUBBER SLEEVE JOINT, TYPE "C" OR "D" (WITH BUSHING IF NECESSARY) PER STANDARD SPECIFICATIONS AND SPECIAL PROVISIONS. 12. SEWERS TO BE TESTED FOR LEAKAGE PER SECTION 308-11.4 OF THE STANDARD SPECIFICATIONS AND SPECIAL PROVISIONS. 13. RESURFACE ALL TRENCHES WITHIN PAVED AREAS TO MEET L.A. COUNTY ROAD DEPT. OR CALIFORNIA STATE HIGHWAY REQUIREMENTS IN ACCORDANCE WITH RESULTS. 14. FULL COMPLIANCE WITH SECTION 308-1.13 OF THE SPECIAL PROVISIONS WILL BE REQUIRED FOR BACKFILL IN STREETS. CERTIFICATION OF BACKFILL COMPACTION AND SAND EQUIVALENTS FOR THIS DEVELOPMENT BY THE BUILDING DIVISION SHALL BE PROVIDED BY THE PERMITTEE PRIOR TO THE RESURRECTION OF A CERTIFICATE OF PARTIAL ACCEPTANCE. 15. SPECIAL BACKFILL REQUIREMENTS: (A) BACKFILL TRENCH AND REPLACE OTHER EARTH SO AS TO ACHIEVE THE NATURAL OR FINISHED GRADES AND SLOPES SHOWN ON THE GRADING PLAN APPROVED FOR THIS DEVELOPMENT BY THE BUILDING DIVISION. (B) ALL BACKFILL AND SAND EQUIVALENTS SHALL BE COMPACTED TO A MINIMUM OF 80% OF MAXIMUM DENSITY PER ASTM STD. METHOD OF TEST D999 AS MODIFIED. ACCEPTABLE CERTIFICATION OF SUCH COMPACTION SHALL BE SUBMITTED TO THE CONSTRUCTION DIVISION PUBLIC WORKS.

Table of materials and standards. Includes items like LEGEND, MINIMUM PUBLIC SAFETY REQUIREMENTS, STANDARD MANHOLE SIZES, etc. Also includes a signature block for John B. Abell, Inc. and County of Los Angeles.

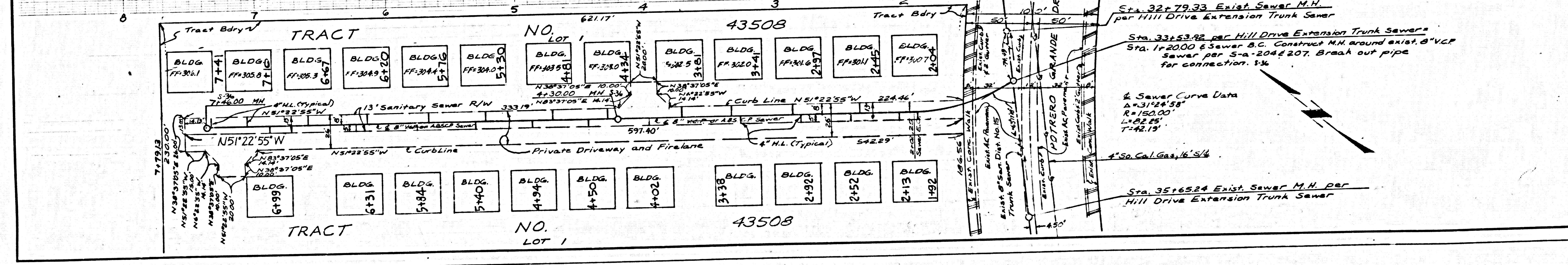


INDEX MAP TRACT NO. 43508 RC. 10374 SCALE: 1"=400'



NO CHARGES FOR CONNECTIONS SEE SAN. DIST. FOR SPECIAL CONNECTION CHARGES

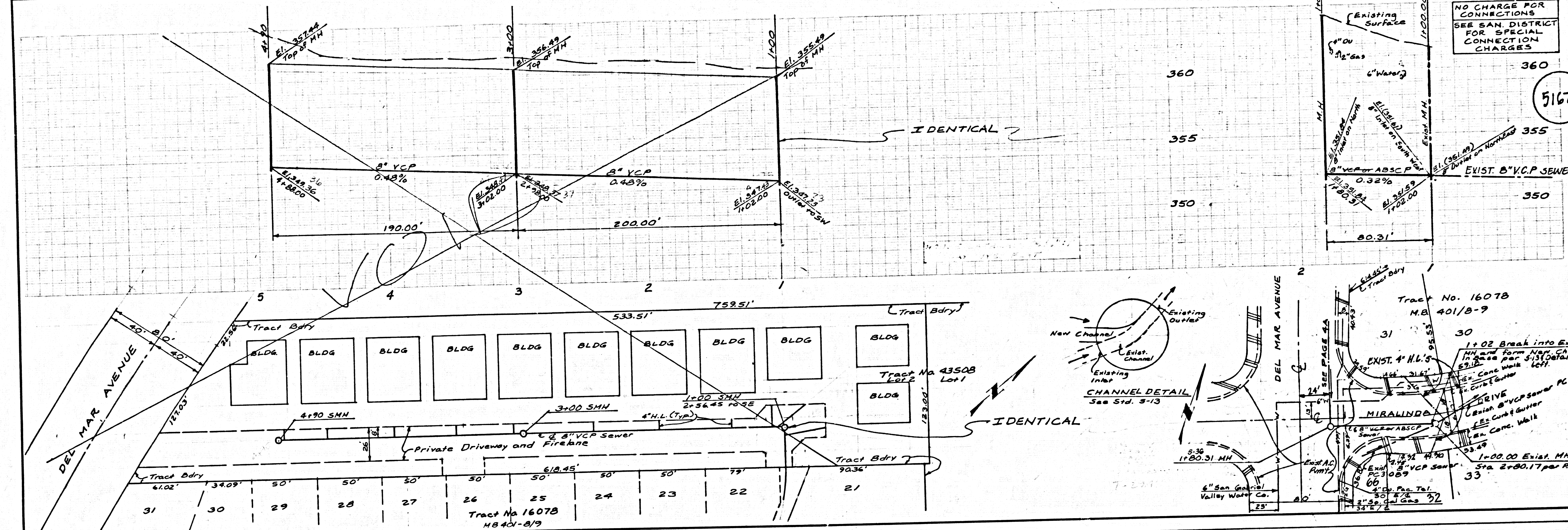
51670





NO CHARGE FOR CONNECTIONS SEE SAN. DISTRICT FOR SPECIAL CONNECTION CHARGES

51671



NO CHARGE FOR CONNECTIONS SEE SAN. DISTRICT FOR SPECIAL CONNECTION CHARGES

51672

