

TRACT NO. 43736
PRIVATE CONTRACT NO. 10375
A-64, C-1

W.S. 63
7 SHEETS, 14 PAGES
21ST MARCH, 1985
PREPARED IN THE OFFICES OF
SIN AND ENGINEERS ASSOCIATES
15230 BURBANK BLVD. VAN NUYS,
CALIF. 91411, (818) 787-9550
BY: *Norah C. Clancy*
REG. C.E. NO. 21873

THE FOLLOWING LATEST REVISED STANDARD PLANS ON FILE IN THE OFFICE OF THE COUNTY ENGINEER SHALL APPLY IN THE CONSTRUCTION OF THIS PROJECT.

12000	REVISIONS TO STANDARD PLANS	5-1
12001	REVISIONS TO STANDARD PLANS	5-2
12002	REVISIONS TO STANDARD PLANS	5-3
12003	REVISIONS TO STANDARD PLANS	5-4
12004	REVISIONS TO STANDARD PLANS	5-5
12005	REVISIONS TO STANDARD PLANS	5-6
12006	REVISIONS TO STANDARD PLANS	5-7
12007	REVISIONS TO STANDARD PLANS	5-8
12008	REVISIONS TO STANDARD PLANS	5-9
12009	REVISIONS TO STANDARD PLANS	5-10
12010	REVISIONS TO STANDARD PLANS	5-11
12011	REVISIONS TO STANDARD PLANS	5-12
12012	REVISIONS TO STANDARD PLANS	5-13
12013	REVISIONS TO STANDARD PLANS	5-14
12014	REVISIONS TO STANDARD PLANS	5-15
12015	REVISIONS TO STANDARD PLANS	5-16
12016	REVISIONS TO STANDARD PLANS	5-17
12017	REVISIONS TO STANDARD PLANS	5-18
12018	REVISIONS TO STANDARD PLANS	5-19
12019	REVISIONS TO STANDARD PLANS	5-20
12020	REVISIONS TO STANDARD PLANS	5-21
12021	REVISIONS TO STANDARD PLANS	5-22
12022	REVISIONS TO STANDARD PLANS	5-23
12023	REVISIONS TO STANDARD PLANS	5-24
12024	REVISIONS TO STANDARD PLANS	5-25
12025	REVISIONS TO STANDARD PLANS	5-26
12026	REVISIONS TO STANDARD PLANS	5-27
12027	REVISIONS TO STANDARD PLANS	5-28
12028	REVISIONS TO STANDARD PLANS	5-29
12029	REVISIONS TO STANDARD PLANS	5-30
12030	REVISIONS TO STANDARD PLANS	5-31
12031	REVISIONS TO STANDARD PLANS	5-32
12032	REVISIONS TO STANDARD PLANS	5-33
12033	REVISIONS TO STANDARD PLANS	5-34
12034	REVISIONS TO STANDARD PLANS	5-35
12035	REVISIONS TO STANDARD PLANS	5-36
12036	REVISIONS TO STANDARD PLANS	5-37
12037	REVISIONS TO STANDARD PLANS	5-38
12038	REVISIONS TO STANDARD PLANS	5-39
12039	REVISIONS TO STANDARD PLANS	5-40
12040	REVISIONS TO STANDARD PLANS	5-41
12041	REVISIONS TO STANDARD PLANS	5-42
12042	REVISIONS TO STANDARD PLANS	5-43
12043	REVISIONS TO STANDARD PLANS	5-44
12044	REVISIONS TO STANDARD PLANS	5-45
12045	REVISIONS TO STANDARD PLANS	5-46
12046	REVISIONS TO STANDARD PLANS	5-47
12047	REVISIONS TO STANDARD PLANS	5-48
12048	REVISIONS TO STANDARD PLANS	5-49
12049	REVISIONS TO STANDARD PLANS	5-50
12050	REVISIONS TO STANDARD PLANS	5-51
12051	REVISIONS TO STANDARD PLANS	5-52
12052	REVISIONS TO STANDARD PLANS	5-53
12053	REVISIONS TO STANDARD PLANS	5-54
12054	REVISIONS TO STANDARD PLANS	5-55
12055	REVISIONS TO STANDARD PLANS	5-56
12056	REVISIONS TO STANDARD PLANS	5-57
12057	REVISIONS TO STANDARD PLANS	5-58
12058	REVISIONS TO STANDARD PLANS	5-59
12059	REVISIONS TO STANDARD PLANS	5-60
12060	REVISIONS TO STANDARD PLANS	5-61
12061	REVISIONS TO STANDARD PLANS	5-62
12062	REVISIONS TO STANDARD PLANS	5-63
12063	REVISIONS TO STANDARD PLANS	5-64
12064	REVISIONS TO STANDARD PLANS	5-65
12065	REVISIONS TO STANDARD PLANS	5-66
12066	REVISIONS TO STANDARD PLANS	5-67
12067	REVISIONS TO STANDARD PLANS	5-68
12068	REVISIONS TO STANDARD PLANS	5-69
12069	REVISIONS TO STANDARD PLANS	5-70
12070	REVISIONS TO STANDARD PLANS	5-71
12071	REVISIONS TO STANDARD PLANS	5-72
12072	REVISIONS TO STANDARD PLANS	5-73
12073	REVISIONS TO STANDARD PLANS	5-74
12074	REVISIONS TO STANDARD PLANS	5-75
12075	REVISIONS TO STANDARD PLANS	5-76
12076	REVISIONS TO STANDARD PLANS	5-77
12077	REVISIONS TO STANDARD PLANS	5-78
12078	REVISIONS TO STANDARD PLANS	5-79
12079	REVISIONS TO STANDARD PLANS	5-80
12080	REVISIONS TO STANDARD PLANS	5-81
12081	REVISIONS TO STANDARD PLANS	5-82
12082	REVISIONS TO STANDARD PLANS	5-83
12083	REVISIONS TO STANDARD PLANS	5-84
12084	REVISIONS TO STANDARD PLANS	5-85
12085	REVISIONS TO STANDARD PLANS	5-86
12086	REVISIONS TO STANDARD PLANS	5-87
12087	REVISIONS TO STANDARD PLANS	5-88
12088	REVISIONS TO STANDARD PLANS	5-89
12089	REVISIONS TO STANDARD PLANS	5-90
12090	REVISIONS TO STANDARD PLANS	5-91
12091	REVISIONS TO STANDARD PLANS	5-92
12092	REVISIONS TO STANDARD PLANS	5-93
12093	REVISIONS TO STANDARD PLANS	5-94
12094	REVISIONS TO STANDARD PLANS	5-95
12095	REVISIONS TO STANDARD PLANS	5-96
12096	REVISIONS TO STANDARD PLANS	5-97
12097	REVISIONS TO STANDARD PLANS	5-98
12098	REVISIONS TO STANDARD PLANS	5-99
12099	REVISIONS TO STANDARD PLANS	5-100

COUNTY OF LOS ANGELES, CALIFORNIA
T.A. TIDEMANSON, DIRECTOR OF PUBLIC WORKS
CHARLES W. CARRY, CHIEF ENGINEER
APPROVED: *Raymond J. ...* 9/27/85
DATE: *9/27/85*
CHECKED: *John ...* 9/27/85
DATE: *9/27/85*
REG. C.E. NO. 32149
SANTA CLARITA VALLEY BLDG. DIST. 82

GENERAL NOTES CONT'D:
1. ALL REFERENCES ON THIS PLAN TO THE COUNTY ENGINEER, THE ROAD DEPARTMENT OR THE FLOOD CONTROL DISTRICT SHALL APPLY TO THOSE APPROPRIATE SECTIONS OF THE DEPARTMENT OF PUBLIC WORKS.

GENERAL NOTES:
1. ELEVATIONS ARE IN FEET ABOVE U.S.C. & G.S. MEAN SEA LEVEL DATUM OF 1985.
2. NO REVISIONS SHALL BE MADE IN THESE PLANS WITHOUT THE APPROVAL OF THE DEPARTMENT OF PUBLIC WORKS.
3. NO REPRESENTATIVE OF THE DEPARTMENT OF PUBLIC WORKS WILL SURVEY OR LAY OUT ANY PORTION OF THE WORK.
4. GRADES TO WHICH THIS IMPROVEMENT IS TO BE CONSTRUCTED ARE SHOWN ON PLANS AND PROFILES. GRADE POINTS FOR TOP OF CURBS, CENTER LINE OF STREETS, ON CENTER LINE OF ALLEYS AND SHOWN BY CIRCLES OR PROFILES AT ALL POINTS BETWEEN DESIGNATED POINTS THE GRADE SHALL BE ESTABLISHED SO AS TO CONFORM TO A STRAIGHT LINE DRAWN BETWEEN SAID DESIGNATED POINTS.
5. THE PRIVATE ENGINEER SHALL FURNISH THE SURVEY OF THE PROPERTY WITH GRADE SHEETS AND STATIONING FOR ALL HOUSE LATERALS AND 7' OR 7' BRANCHES AND SHALL PROVIDE STAKES FOR THEM AT THEIR PROPER LOCATIONS WITH STATIONING PLANS. MARKED ALL HOUSE LATERALS SHALL BE CONSTRUCTED AT RIGHT ANGLES FROM THE MAIN LINE SEWER EXCEPT AS SHOWN ON THE PLANS. HOUSE LATERALS FROM CHIMNEYS SHALL NOT HAVE AN ANGLE OF LESS THAN 45° WITH THE MAIN LINE SEWER. ANY CHANGE IN ALIGNMENT SHALL BE REQUESTED IN WRITING BY THE PRIVATE ENGINEER.
6. THE PRIVATE ENGINEER SHALL FURNISH THE HOUSE LATERAL DEPTH AT THE PROPERTY LINE BELOW THE TOP OF CURB ELEVATION FOR EACH HOUSE LATERAL ON THE GRADE SHEET.
7. BEFORE WORK CAN BE STARTED THE CONTRACTOR MUST OBTAIN A PERMIT TO EXCAVATE IN COUNTY STREETS FROM THE L.A. COUNTY ROAD DEPT., DISTRICT OFFICE NO. 8, AND PAY A FEE TO THE DEPARTMENT OF PUBLIC WORKS, 550 SE BEAUMONT AVE., LOS ANGELES, CA 90012, TO COVER THE COST OF CONSTRUCTION INSPECTION AND RECORDING. THE CONTRACTOR SHALL BE RESPONSIBLE FOR OBTAINING FROM THE STATE OF CALIFORNIA, DIVISION OF HIGHWAYS, 120 SOUTH SPRING STREET, LOS ANGELES, CALIFORNIA.
8. IF WORK IS TO BE DONE IN A STATE HIGHWAY RIGHT-OF-WAY THE CONTRACTOR SHALL OBTAIN FROM THE STATE OF CALIFORNIA, DIVISION OF HIGHWAYS, 120 SOUTH SPRING STREET, LOS ANGELES, CALIFORNIA.
9. APPROVAL OF THIS PLAN BY THE COUNTY OF LOS ANGELES DOES NOT CONSTITUTE A REPRESENTATION AS TO THE ACCURACY OF THE LOCATION OF OR THE EXISTENCE OR NON-EXISTENCE OF ANY UNDERGROUND UTILITY PIPE, OR STRUCTURE WITHIN THE LIMITS OF THE PROJECT. THIS NOTE APPLIES TO ALL PAGES.
10. REFER TO SECTION 7.18.11 OF THE STANDARD SPECIFICATIONS, REGARDING SAFETY ORDERS.
11. PRIOR TO THE ISSUANCE OF THE REQUIRED SEWER CONSTRUCTION PERMIT, THE CONTRACTOR SHALL OBTAIN AND FILE WITH THE DEPARTMENT OF PUBLIC WORKS COPIES OF A PERMIT TO EXCAVATE IN COUNTY STREETS FROM THE LOS ANGELES COUNTY ROAD DEPARTMENT, A PERMIT FOR EXCAVATIONS AND TRENCHES FROM THE STATE OF CALIFORNIA, DIVISION OF INDUSTRIAL SAFETY AND A CERTIFICATE OF WORKERS COMPENSATION INSURANCE WITH THE DEPARTMENT OF COUNTY ENGINEER, 800 SOUTH WILMOT, RM. 400, LOS ANGELES, CALIFORNIA 90012, NAMED AS THE CERTIFICATE HOLDER TO BE NOTIFIED 30 DAYS PRIOR TO CANCELLATION OF POLICY.

REVISION NO. 5 DATE: 10-23-85
PAGES 13 & 14 DELETED SEWER FROM STA. 12+40.00 TO STA. 12+40.00
APPROVED BY: *...*
OFFICE OF THE DIRECTOR OF PUBLIC WORKS

REVISION NO. 6 DATE: 11-12-85
PAGES 9 & 10 REVISED SEWER PROFILE FROM STA. 1+00.00 TO STA. 1+50.00, REVISED GRADE FOR TOP OF EXIST. 12" V.C.P. SEWER
APPROVED BY: *...*
OFFICE OF THE DIRECTOR OF PUBLIC WORKS

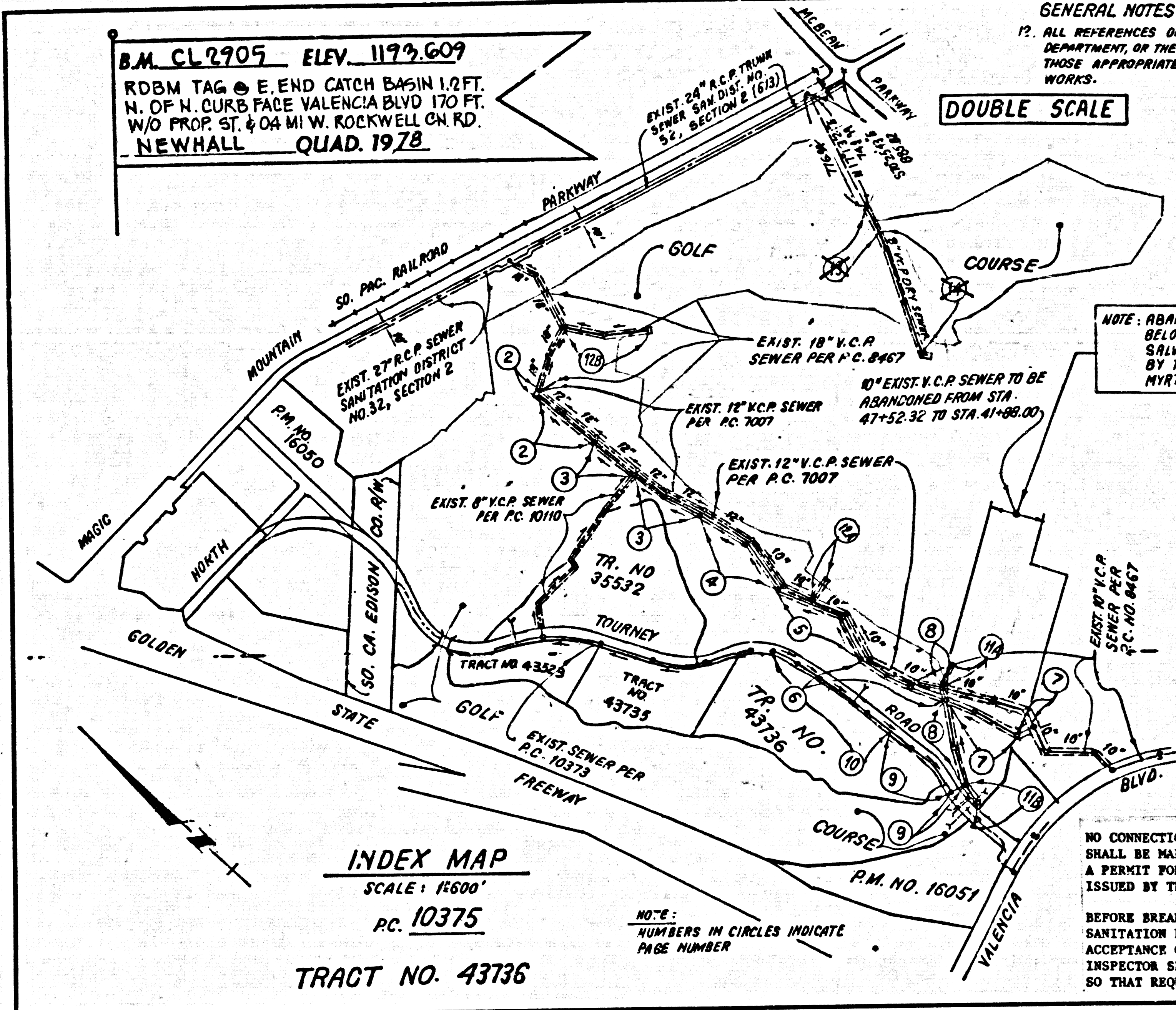
NOTE: ABANDON EXIST. SAN. SEWERS FOR THE LIMITS SHOWN BELOW PER STANDARD SPECIFICATION 308.5. SALVAGE M.H. FRAMES & COVERS SHALL BE DELIVERED BY THE CONTRACTOR TO NORTH WARD AT 2044 S. MYRTLE AVE. IRVINGDALE, CA. 91707.

REVISION NO. 3 DATE: 10-28-85
PAGE 11-8 REVISED SEWER PROFILE FROM STA. 2+01.47 TO 4+53.64, REVISED TOP OF M.H. ELEV. @ STA. 4+53.64, AND REVISED SURFACE DRAIN SEWER
APPROVED BY: *...*
OFFICE OF THE DIRECTOR OF PUBLIC WORKS

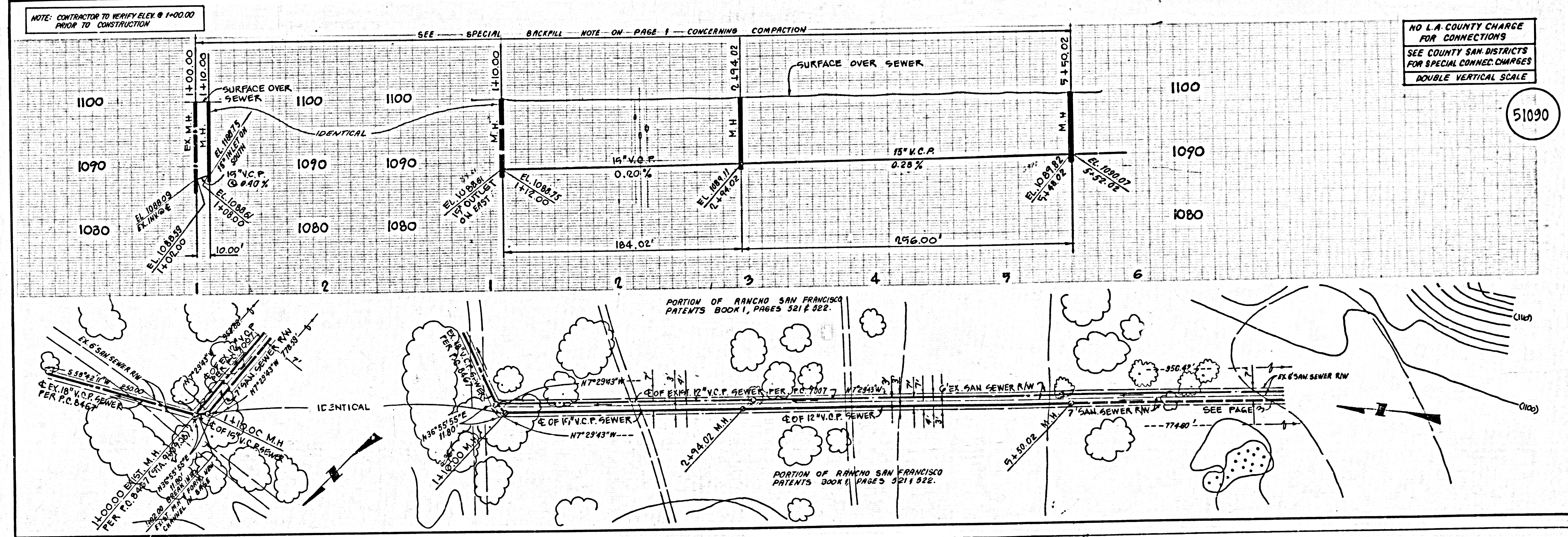
REVISION NO. 2 DATE: 10-01-85
PAGES 13 & 14 REVISED SEWER PROFILE FROM STA. 4+33.91 TO STA. 22+00.00
APPROVED BY: *...*
OFFICE OF THE DIRECTOR OF PUBLIC WORKS

REVISION NO. 1 DATE: 10-02-85
PAGE 6 REVISED SEWER ALIGNMENT AND GRADE FROM STA. 22+12.30 TO STA. 30+00.00, REVISED M.H. 52 CHANGES
APPROVED BY: *...*
OFFICE OF THE DIRECTOR OF PUBLIC WORKS

NO CONNECTION FOR THE DISPOSAL OF INDUSTRIAL WASTES SHALL BE MADE TO SEWERS SHOWN ON THESE DRAWINGS UNTIL A PERMIT FOR INDUSTRIAL WASTEWATER DISCHARGE HAS BEEN ISSUED BY THE SANITATION DISTRICTS FOR SAID CONNECTION. BEFORE BREAKING INTO OR CONSTRUCTION ON A COUNTY SANITATION DISTRICT SEWER AND PRIOR TO FINAL ACCEPTANCE OF THE PROJECT, SANITATION DISTRICT INSPECTOR SHALL BE NOTIFIED BY PHONE 818-962-8605 SO THAT REQUIRED INSPECTION CAN BE MADE.

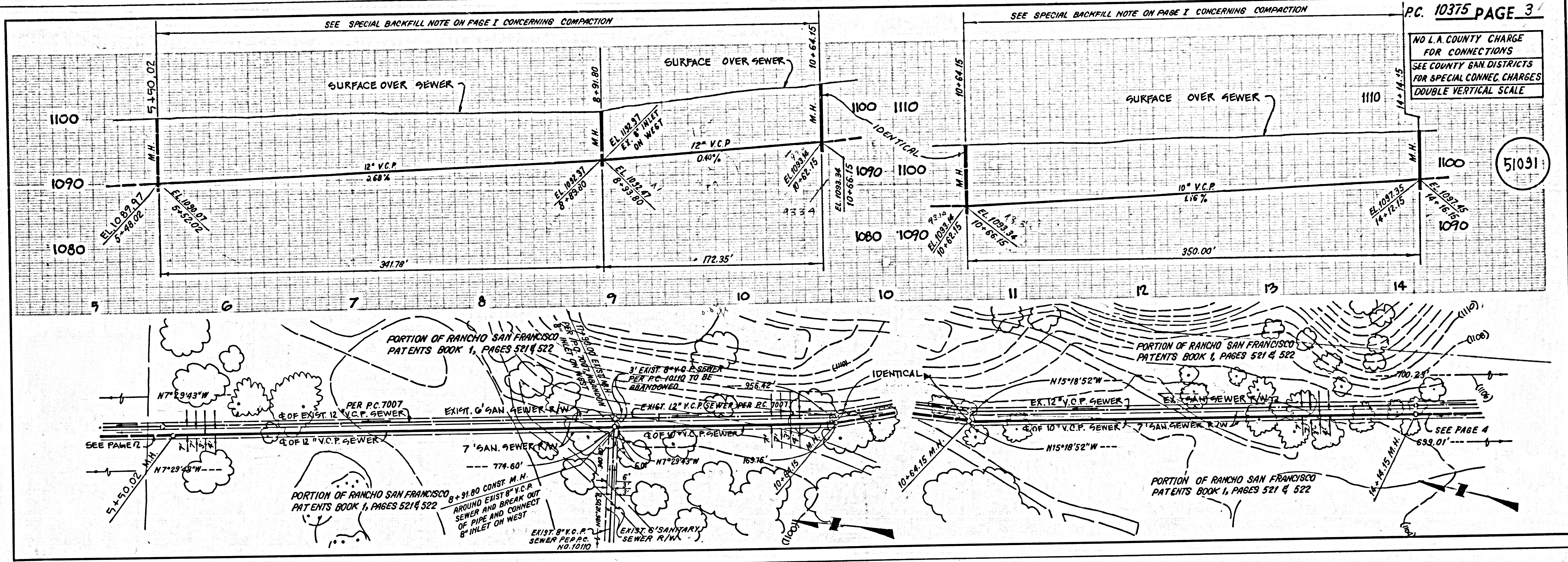


INDEX MAP
SCALE: 1"=500'
PC. 10375
TRACT NO. 43736



NO L.A. COUNTY CHARGE FOR CONNECTIONS
SEE COUNTY SAN DISTRICTS FOR SPECIAL CONNEX. CHARGES
DOUBLE VERTICAL SCALE

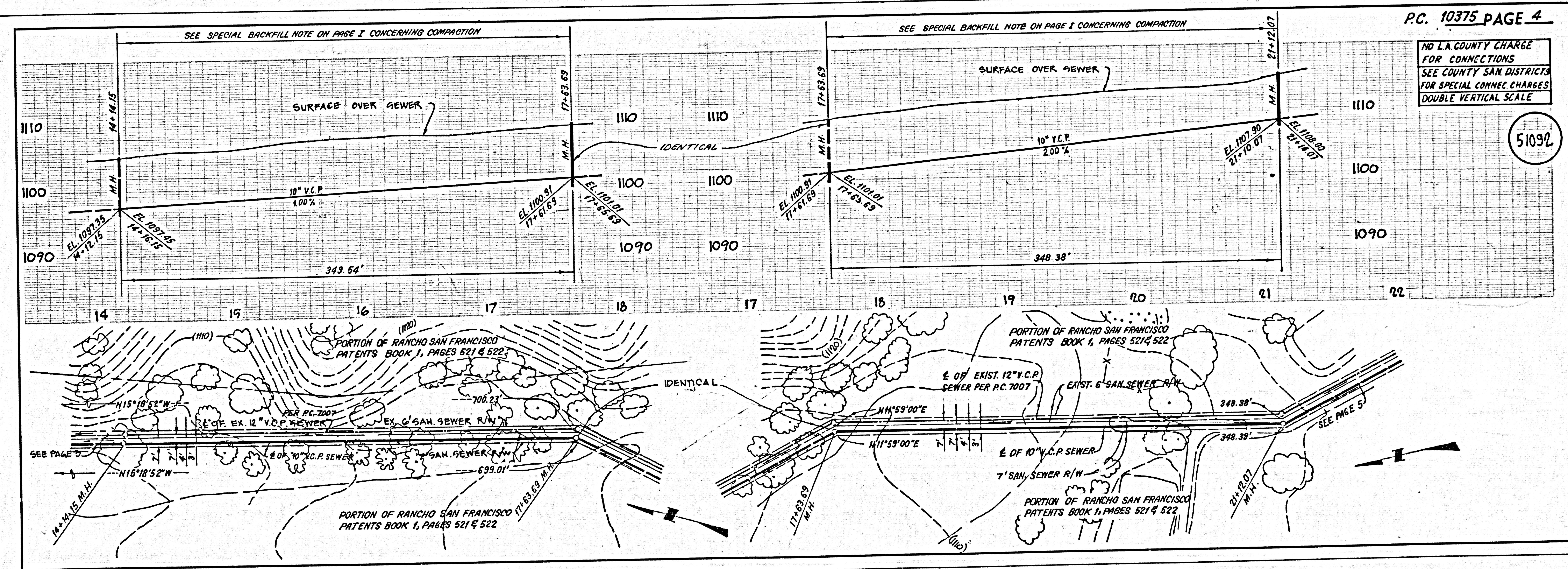
L.A. COUNTY SEWER DIST. NO. 1 SOUTHERN CALIFORNIA REPORT CO. 22-4-84



PC. 10375 PAGE 3

NO L.A. COUNTY CHARGE FOR CONNECTIONS
SEE COUNTY SAN DISTRICTS FOR SPECIAL CONN. CHARGES
DOUBLE VERTICAL SCALE

51091

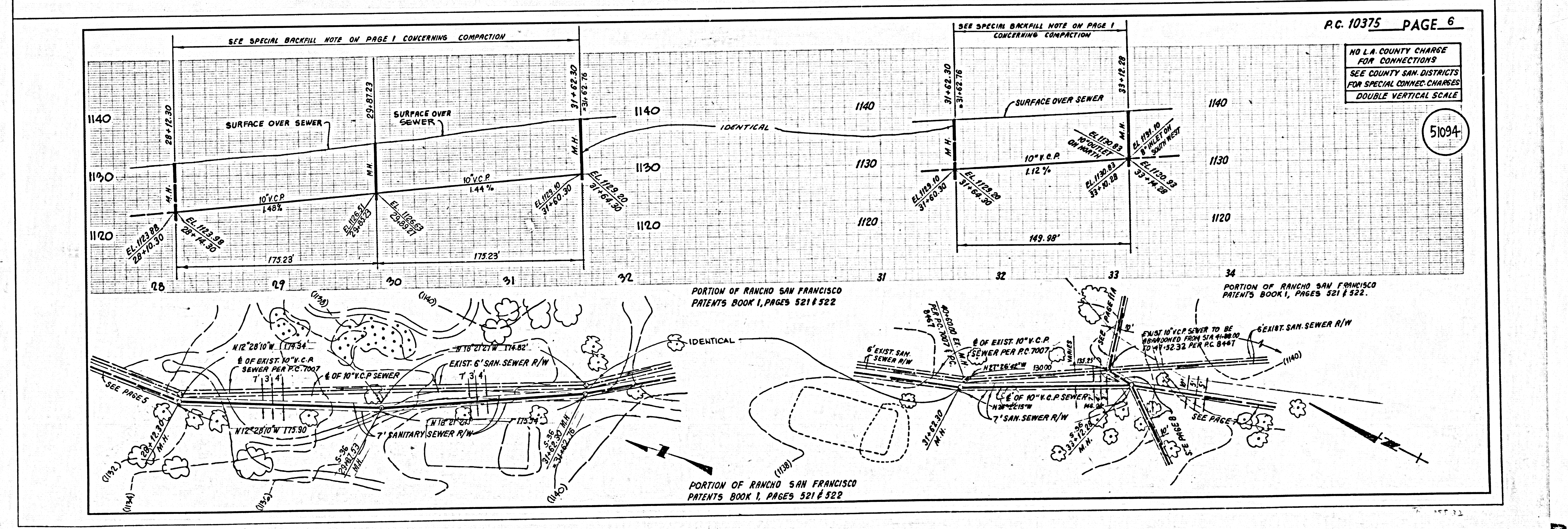
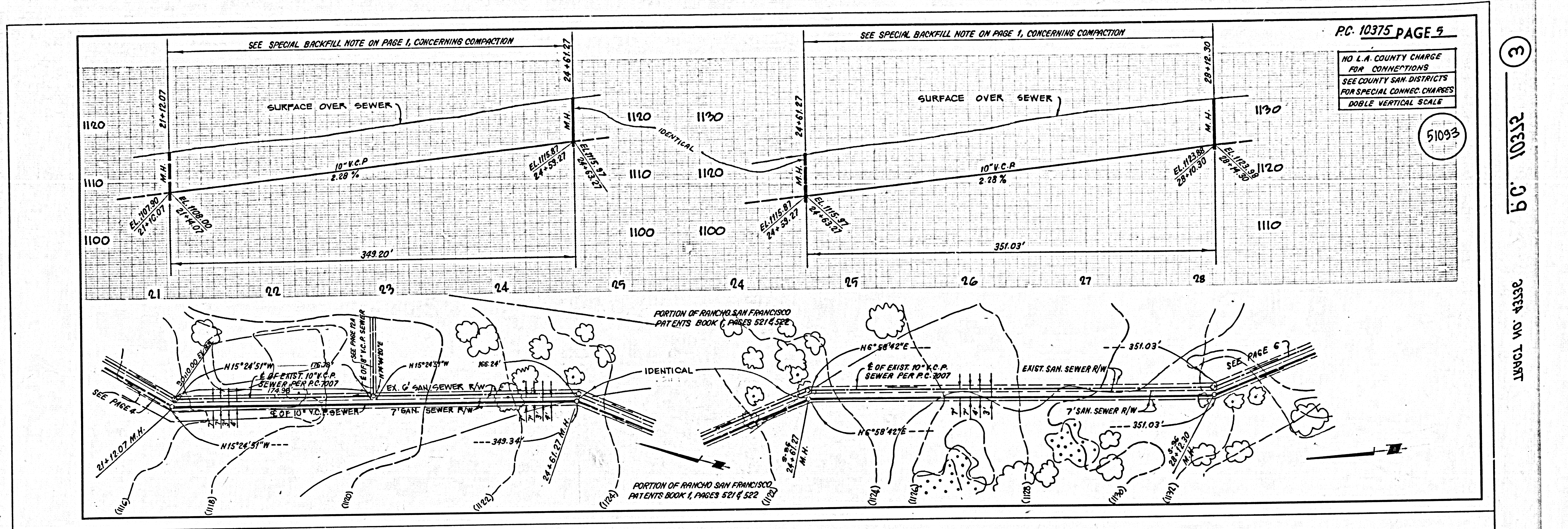


PC. 10375 PAGE 4

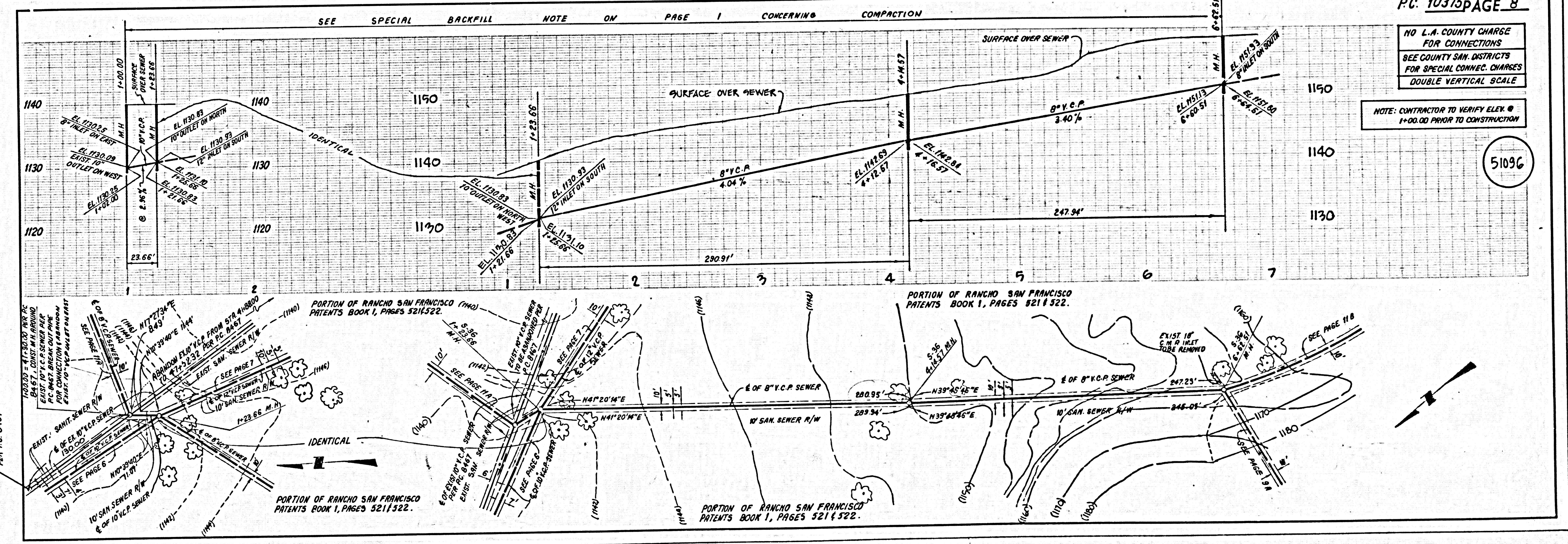
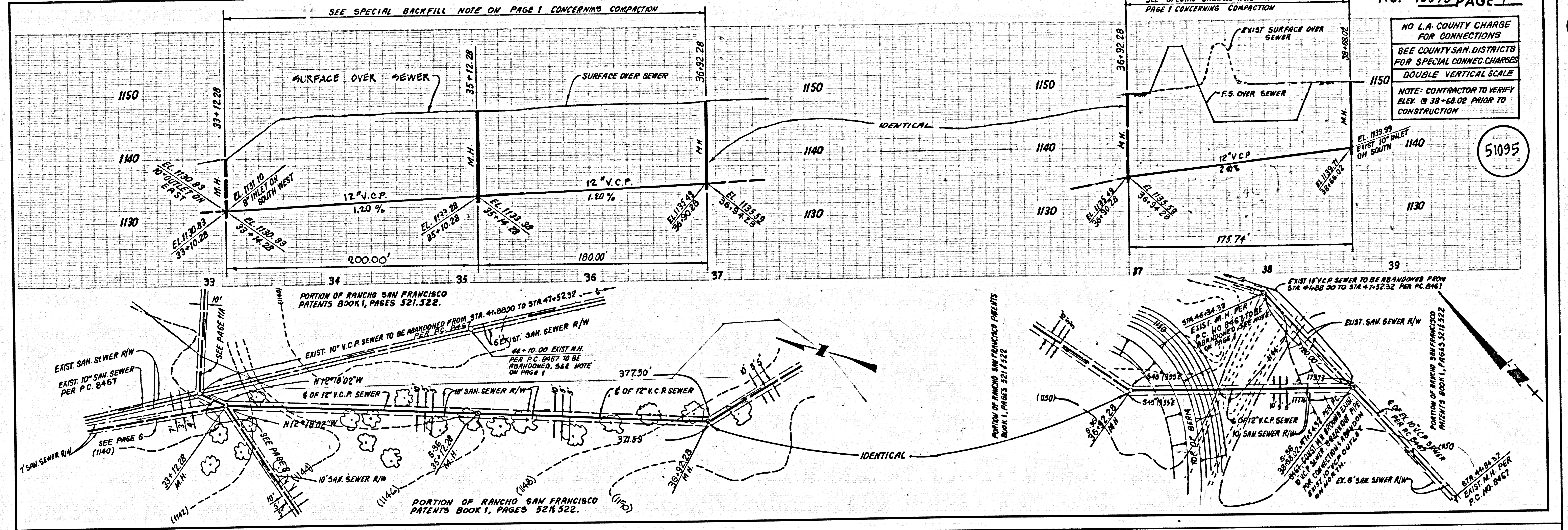
NO L.A. COUNTY CHARGE FOR CONNECTIONS
SEE COUNTY SAN DISTRICTS FOR SPECIAL CONN. CHARGES
DOUBLE VERTICAL SCALE

51092

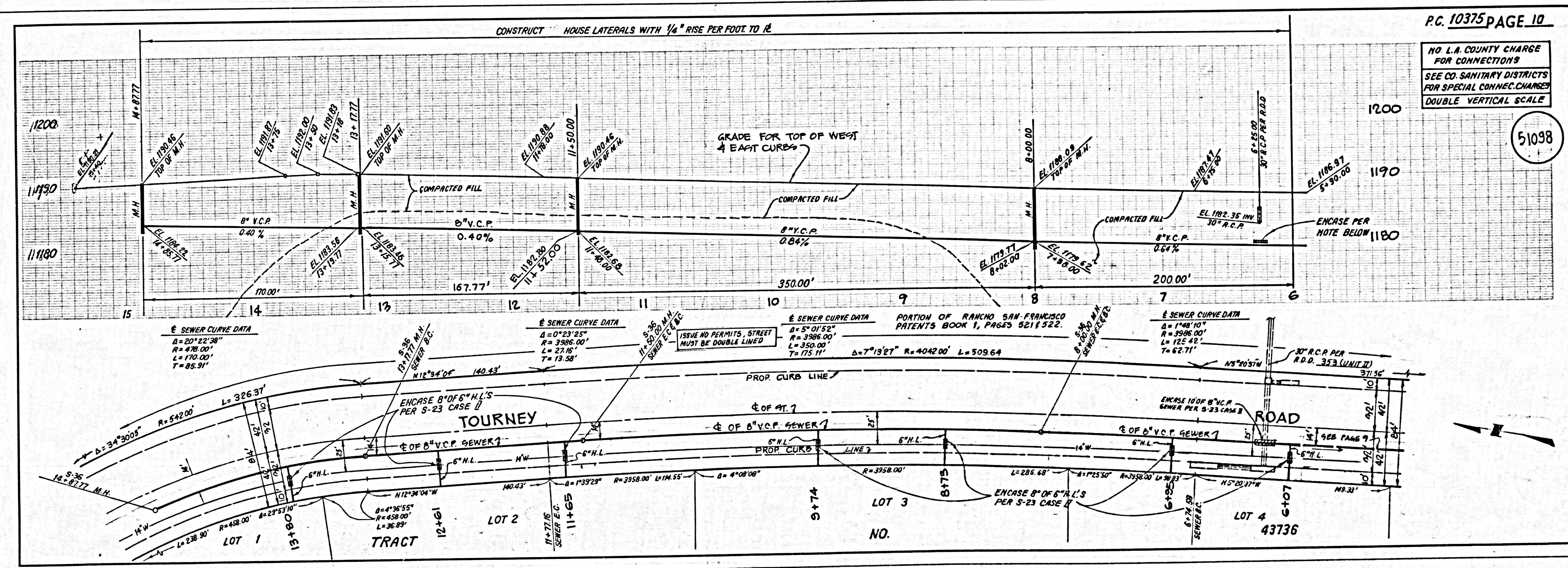
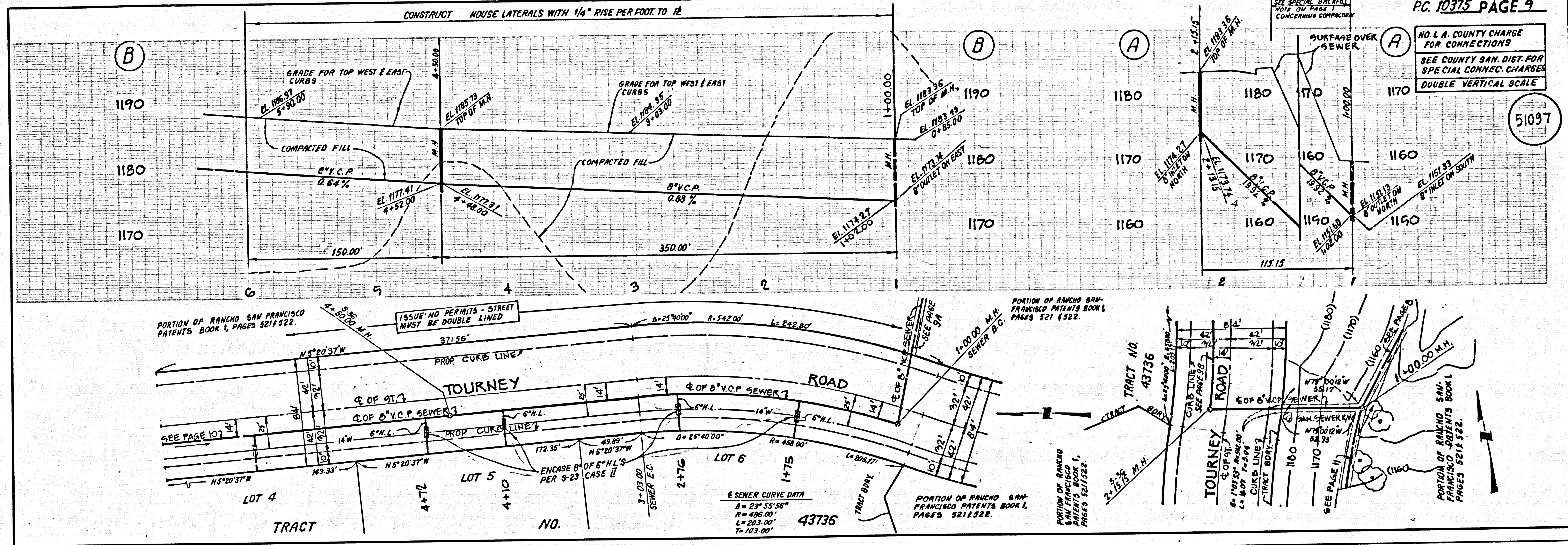
S
D.C. 10372
LAWL. NO. 43138



3
 B.C. 10352
 3555 N.W. 134th



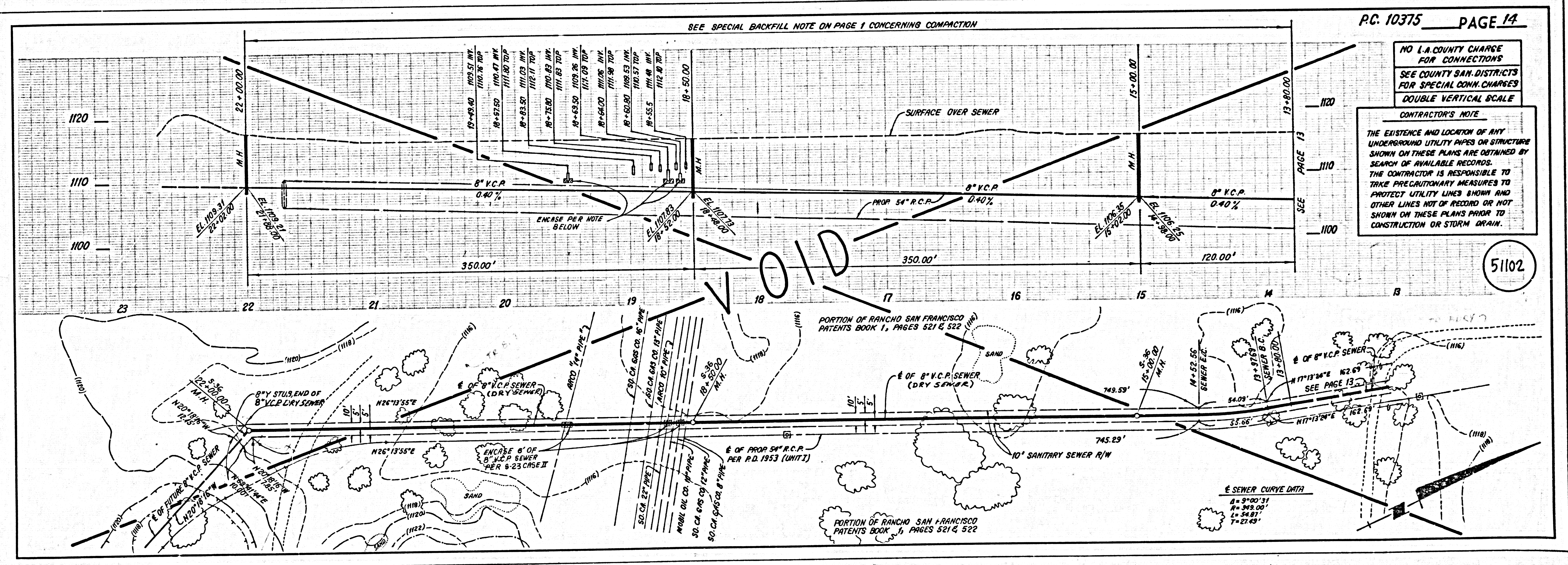
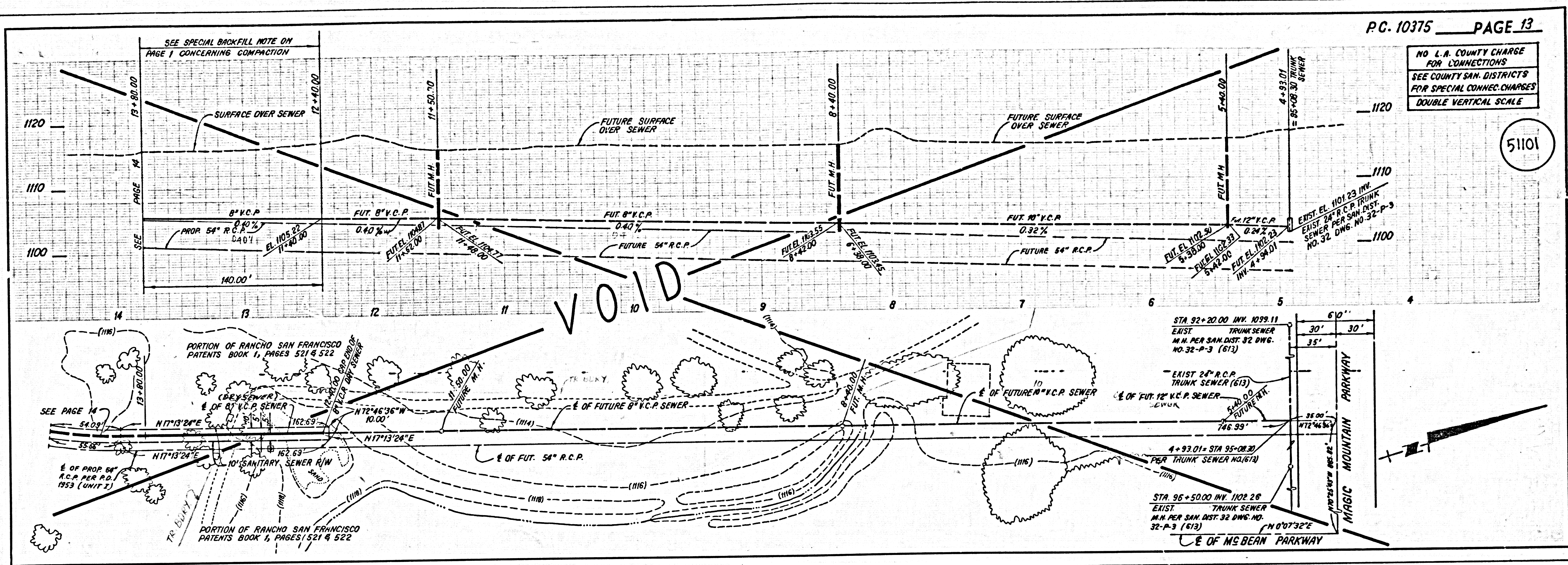
4
 BC 10375
 10375-145-7



2

37501 09

26529 ON TRACT



5

25501 .09

26588-001 TRAPT

PRE COPY

M5

M5