

TO BE CONSTRUCTED IN TRACT NO. 41960

PRIVATE CONTRACT NO. 10376

A-64 W.S. 4 SHEETS, 8 PAGES

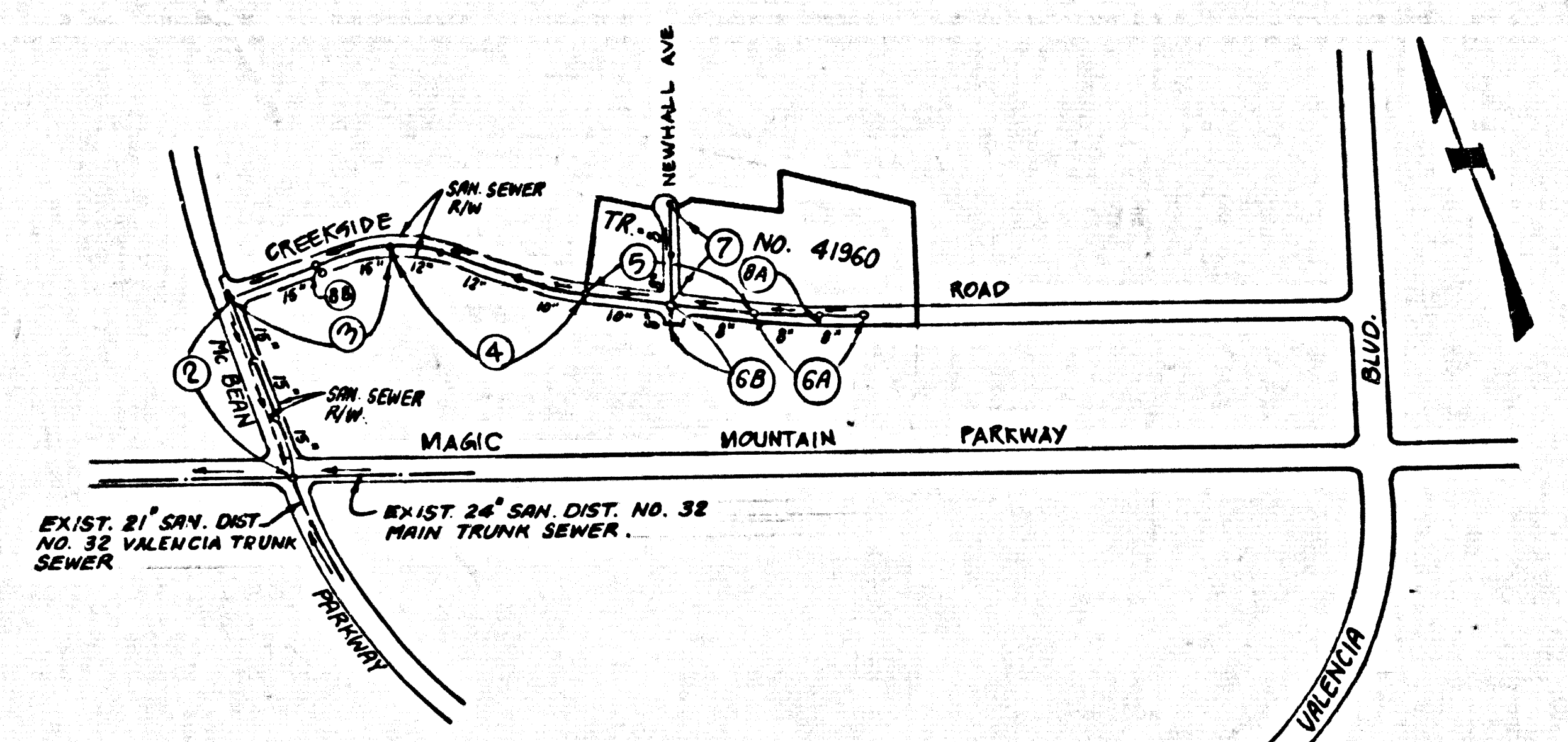
51333

SCALE: VERT. 1"=4' HORIZ. 1"=40' FEBRUARY, 1987
 PREPARED IN THE OFFICES OF
 GIKAND ENGINEERING ASSOCIATES
 15230 BURBANK BLVD., VAN NUYS
 CALIFORNIA 91411 (818) 707-8550
 BY: *Nawal Choudhry*
 REG. C. E. No. 21823

ITEM	QUANTITY	UNIT PRICE	TOTAL
MINIMUM PUBLIC SAFETY ENCLOSURES	1	500.00	500.00
STANDARD MANHOLE STOP	1	500.00	500.00
STANDARD MANHOLE STOP	1	500.00	500.00
CLAMPING AND DISCONNECT	1	500.00	500.00
WIRE OR THE SUPPORT	1	500.00	500.00
ALLOWABLE TRENCH WIDTHS	1	500.00	500.00
LOCKING MANHOLE FRAMES AND COVERS	1	500.00	500.00
NON-APPROVED PRECAST CONCRETE MANHOLE	1	500.00	500.00
CHIMNEYS	1	500.00	500.00
JACKING PIPE	1	500.00	500.00

COUNTY OF LOS ANGELES, CALIFORNIA
 THOMAS A. TIDEMANSON, DIRECTOR OF PUBLIC WORKS
 CHARLES W. CARTY, CHIEF ENGINEER OF PUBLIC WORKS
 APPROVED: *Carl D. Slum* 1/17/87
 APPROVED: *Charles W. Carty* 1/17/87
 REVIEWED BY: *Russell P. Williams* 1/19/87
 SANTA CLARITA BLDG. DIST. 8-2

B.M. CL1771 ELEV 1124.77
 USC+96 MON 12IN UP 36 FT NC/L
 MAGIC MT. PKWY +0.25 MI W
 NEWHALL AVE MKD (370 1953
 RESET 1964)
 NEWHALL QUAD. 1978



INDEX MAP
 SCALE: 1"=600'
 P.C. 10376
 TRACT NO. 41960

NOTE: NUMBERS IN CIRCLES INDICATE PAGE NUMBERS.

GENERAL NOTES CONT.
 12. ALL REFERENCES ON THIS PLAN TO THE COUNTY ENGINEER, THE ROAD DEPARTMENT, OR THE PLAND CONTROL DISTRICT SHALL APPLY TO THOSE APPROPRIATE SECTIONS OF THE DEPARTMENT OF PUBLIC WORKS.

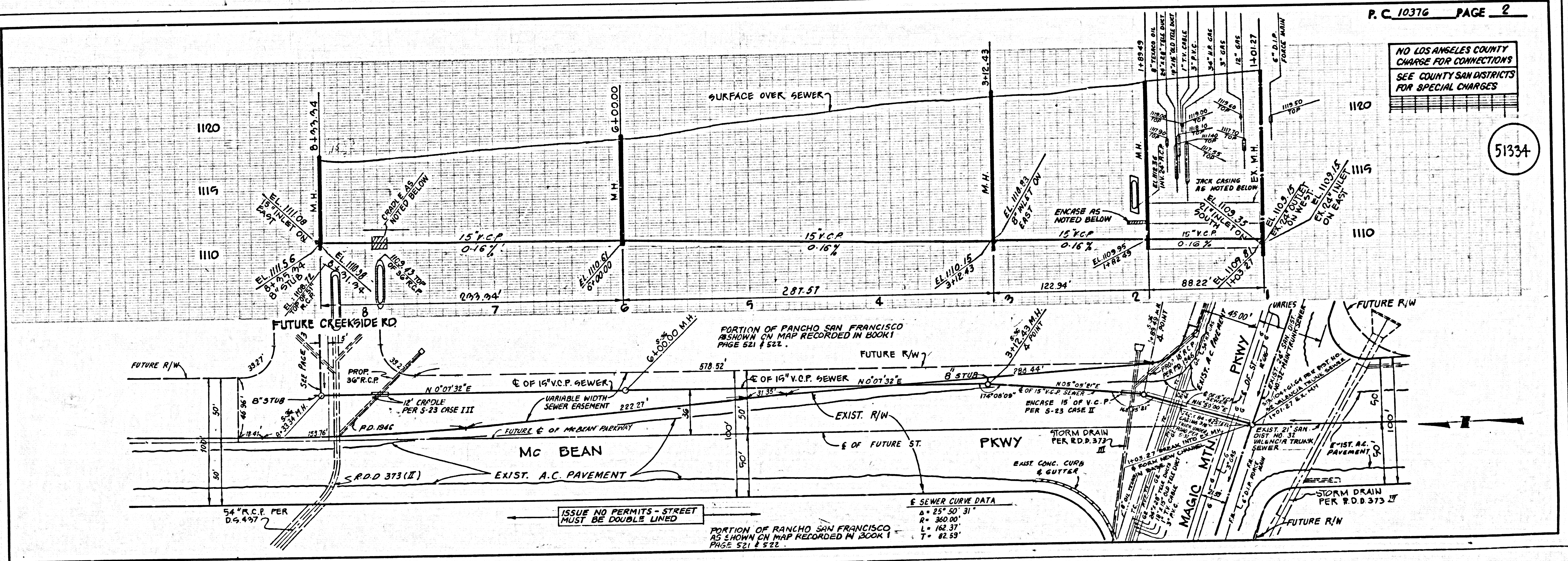
REVISION NO. 2 DATE 10-15-86
 PAGE 1 REVISED INDEX MAP
 PAGE 3 ADDED 10" V.C.P. SEWER SOUTH SIDE OF M.M. @ STA. 4+50.00
 PAGE 8B ADDED 10" V.C.P. SEWER PLAN & PROFILE FROM M.M. @ STA. 4+50.00 TO STA. 1+44.32 & R/W M.M. @ STA. 3+12.43
 APPROVED BY: *Sally G. Habel*
 OFFICE OF THE DIRECTOR OF PUBLIC WORKS

REVISION NO. 1 DATE 6-4-86
 PAGE 1 REVISED LIST OF STANDARDS & CONSTRUCTION NOTE 5.
 PAGE 2 REVISED SEWER PLAN AND PROFILE FROM EXIST. M.M. @ STA. 1+00.00 TO STA. 3+12.43 AND FROM CASE 2-28 MAIN LINE SEWER...
 APPROVED BY: *Sally G. Habel*
 OFFICE OF THE DIRECTOR OF PUBLIC WORKS

NO CONNECTION FOR THE DISPOSAL OF INDUSTRIAL WASTES SHALL BE MADE TO SEWERS SHOWN ON THESE DRAWINGS UNTIL A PERMIT FOR INDUSTRIAL WASTEWATER DISCHARGE HAS BEEN ISSUED BY THE SANITATION DISTRICTS FOR SAID CONNECTION.
 BEFORE BREAKING INTO OR CONSTRUCTION ON A COUNTY SANITATION DISTRICT SEWER AND PRIOR TO FINAL ACCEPTANCE OF THE PROJECT, SANITATION DISTRICT INSPECTOR SHALL BE NOTIFIED BY PHONE 818 - 962-8605 SO THAT REQUIRED INSPECTION CAN BE MADE.

- GENERAL NOTES:
- ELEVATIONS ARE IN FEET ABOVE U.S.C. & G.S. SEA LEVEL, DATUM OF 1928.
 - NO REVISIONS SHALL BE MADE IN THESE PLANS WITHOUT THE APPROVAL OF THE COUNTY ENGINEER.
 - NO REPRESENTATIVE OF THE COUNTY ENGINEER WILL SURVEY OR LAY OUT ANY PORTION OF THE WORK.
 - GRADES TO WHICH THIS IMPROVEMENT IS TO BE CONSTRUCTED ARE SHOWN ON PLANS AND PROFILES. GRADE POINTS FOR TOP OF CURBS, CENTER LINE OF STREETS, OR CENTER LINE OF ALLEYS ARE SHOWN BY CIRCLES OR SQUARES AT ALL POINTS BETWEEN DESIGNATED POINTS. THE GRADE SHALL BE ESTABLISHED SO AS TO CONFORM TO A STRAIGHT LINE DRAWN BETWEEN SAID DESIGNATED POINTS.
 - THE PRIVATE ENGINEER SHALL FURNISH THE COUNTY ENGINEER WITH GRADE SHEETS AND STATIONING FOR ALL HOUSE LATERALS AND "ON" OR "OFF" BRANCHES AND SHALL PROVIDE STAKES FOR THEM AT THEIR PROPER LOCATIONS WITH STATIONING PLAINLY MARKED. ALL HOUSE LATERALS SHALL BE CONSTRUCTED IN A STRAIGHT ALIGNMENT AT RIGHT ANGLES FROM THE MAIN LINE SEWER EXCEPT AS SHOWN ON THE PLANS. HOUSE LATERALS FROM CHIMNEYS SHALL NOT HAVE AN ANGLE OF LESS THAN 45° WITH THE MAIN LINE SEWER. ANY CHANGE IN ALIGNMENT SHALL BE REQUESTED IN WRITING BY THE PRIVATE ENGINEER.
 - THE PRIVATE ENGINEER SHALL FURNISH THE HOUSE LATERAL DEPTH AT THE PROPERTY LINE BELOW THE TOP OF CURB ELEVATION FOR EACH HOUSE LATERAL ON THE GRADE SHEET.
 - BEFORE WORK CAN BE STARTED, THE CONTRACTOR MUST OBTAIN A PERMIT TO EXCAVATE IN COUNTY STREETS FROM THE L.A. COUNTY ROAD DEPT. DISTRICT OFFICE NO. 8 AND PAY A FEE TO THE COUNTY ENGINEER, 800 S. VERMONT AVENUE, LOS ANGELES, CA 90008. TO COVER THE COST OF CONSTRUCTION INSPECTION AND RECORD PLANS.
 - IF WORK IS TO BE DONE IN A STATE HIGHWAY, A PERMIT MUST BE OBTAINED FROM THE STATE OF CALIFORNIA, DIVISION OF HIGHWAYS, 120 SOUTH SPRING STREET, LOS ANGELES, CALIFORNIA.
 - APPROVAL OF THIS PLAN BY THE COUNTY OF LOS ANGELES DOES NOT CONSTITUTE A REPRESENTATION AS TO THE ACCURACY OF THE LOCATION OF OR THE EXISTENCE OR NON-EXISTENCE OF ANY UNDERGROUND UTILITY PIPE OR STRUCTURE WITHIN THE LIMITS OF THE PROJECT. THIS NOTE APPLIES TO ALL PAGES.
 - REFER TO SECTION 7.16.41 OF THE STANDARD SPECIFICATIONS, REGARDING SAFETY ORDERS.
 - PRIOR TO THE ISSUANCE OF THE REQUIRED SEWER CONSTRUCTION PERMIT, THE CONTRACTOR SHALL OBTAIN AND FILE WITH THE COUNTY ENGINEER COPIES OF A PERMIT TO EXCAVATE IN COUNTY STREETS FROM THE LOS ANGELES COUNTY ROAD DEPARTMENT, A PERMIT FOR EXCAVATIONS AND TRENCHES FROM THE STATE OF CALIFORNIA, DIVISION OF INDUSTRIAL SAFETY AND A CERTIFICATE OF WORKERS COMPENSATION INSURANCE WITH THE DEPARTMENT OF COUNTY ENGINEER, 800 SOUTH VERMONT, NO. 808, LOS ANGELES, CALIFORNIA 90008, NAMED AS THE CERTIFICATE HOLDER TO BE NOTIFIED BY DATE PRIOR TO CANCELLATION OF POLICY.

- CONSTRUCTION NOTES:
- WORK SHALL BE CONSTRUCTED ACCORDING TO THE STANDARD SPECIFICATIONS FOR PUBLIC WORKS CONSTRUCTION (1985 EDITION WITH SUPPLEMENTS) AND COUNTY ENGINEER SPECIAL PROVISIONS FOR THE CONSTRUCTION OF SANITARY SEWERS DATED SEPT. 21, 1978. AND SHALL BE PROSECUTED ONLY IN THE PRESENCE OF THE COUNTY ENGINEER.
 - THE CONTRACTOR SHALL NOTIFY THE CONSTRUCTION DIVISION BY TELEPHONE, 826.838 AT LEAST TWENTY-FOUR HOURS BEFORE STARTING ANY WORK UNDER THIS CONTRACT.
 - HOUSE LATERALS TO BE CONSTRUCTED WITH INVERTS AT PROPERTY LINE 6 FEET BELOW CURB GRADE EXCEPT AS NOTED.
 - WYE OR TEE BRANCHES MAY BE USED FOR CONNECTIONS TO MAINLINE SEWERS EXCEPT AS NOTED.
 - ALL STRUCTURES SHALL BE EITHER BRICK MANHOLES PER S-3 OR PRECAST CONCRETE MANHOLES PER S-38 GROUP S-38-HOODS.
 - PROVIDE STAKES ON THE PROPERTY LINE OR PROPERTY LINES PRODUCED AT RIGHT ANGLES TO THE SEWER LINE AT THE CENTER LINE OF EACH MANHOLE.
 - MANHOLE TOPS IN UNIMPROVED RIGHTS OF WAY TO BE SIX INCHES ABOVE FINISHED GRADE.
 - WETTED CLAY PIPE JOINTS SHALL BE TYPE "D" OR "B" PER STANDARD SPECIFICATIONS SECTION 308-2.
 - IF A POWER POLE IS WITHIN THREE FEET OF THE SEWER, THE SEWER SHALL BE ENCASED PER S-23 CASE II, TWO FEET ON EACH SIDE FROM THE POINT OF INTERFERENCE.
 - IF DURING THE COURSE OF CONSTRUCTION IT IS DETERMINED THAT THERE IS LESS THAN FOUR FEET OF COVER OVER THE TOP OF A MAIN LINE OF HOUSE LATERAL SEWER WHICH IS NOT INDICATED ON THE PLANS, THE PIPE SHALL BE ENCASED PER S-23 CASE II UNLESS OTHERWISE APPROVED BY THE COUNTY ENGINEER.
 - ALL JOINTS BETWEEN CAST IRON PIPE AND WETTED CLAY PIPE SHALL BE MADE WITH A RUBBER SLEEVE JOINT, TYPE "C" OR "D" WITH BUSHING IF NECESSARY PER STANDARD SPECIFICATIONS, SECTION 308-2.
 - SEWERS TO BE TESTED FOR LEAKAGE PER SECTION 308-14 OF THE STANDARD SPECIFICATIONS AND SPECIAL PROVISIONS.
 - RESURFACE ALL TRENCHES WITHIN PAVED AREAS TO MEET L.A. COUNTY ROAD DEPT. OR CALIFORNIA STATE HIGHWAY REQUIREMENTS IN ACCORDANCE WITH PERMITS.
 - FULL COMPLIANCE WITH SECTION 308-13.3 OF THE SPECIAL PROVISIONS WILL BE REQUIRED FOR BACKFILL IN STREETS. CERTIFICATION OF BACKFILL COMPACTION AND SAND EQUIVALENTS BY A QUALIFIED, REGISTERED TESTING LABORATORY SHALL BE PROVIDED BY THE PERMITTEE PRIOR TO THE ISSUANCE OF A CERTIFICATE OF PARTIAL ACCEPTANCE.
 - SPECIAL BACKFILL IN EASEMENT CONSTRUCTION: (A) BACKFILL TRENCHES AND REPLACE OTHER EARTH SO AS TO ACHIEVE THE NATURAL OR FINISHED GRADES AND SLOPES SHOWN ON THE GRADING PLAN APPROVED FOR THE DEVELOPMENT BY THE BUILDING AND SAFETY DIVISION. (B) ALL BACKFILL AND EARTH REPLACED SHALL BE COMPACTED TO A MINIMUM OF 90% OF MAXIMUM DENSITY PER A.S.T.M. STD. METHOD OF TEST D9987 AS NOTED. ACCEPTABLE CERTIFICATION OF BUMP COMPACTION SHALL BE SUBMITTED TO THE CONSTRUCTION DIVISION.

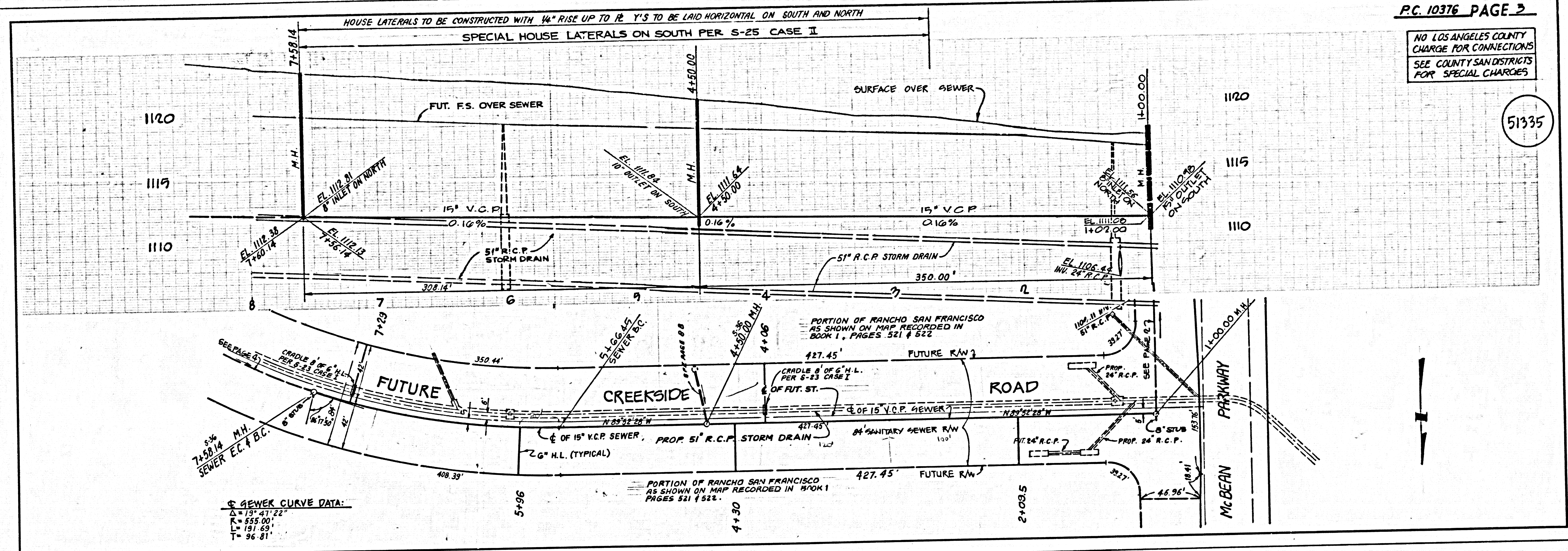


NO LOS ANGELES COUNTY CHARGE FOR CONNECTIONS SEE COUNTY SAN DISTRICTS FOR SPECIAL CHARGES

51334

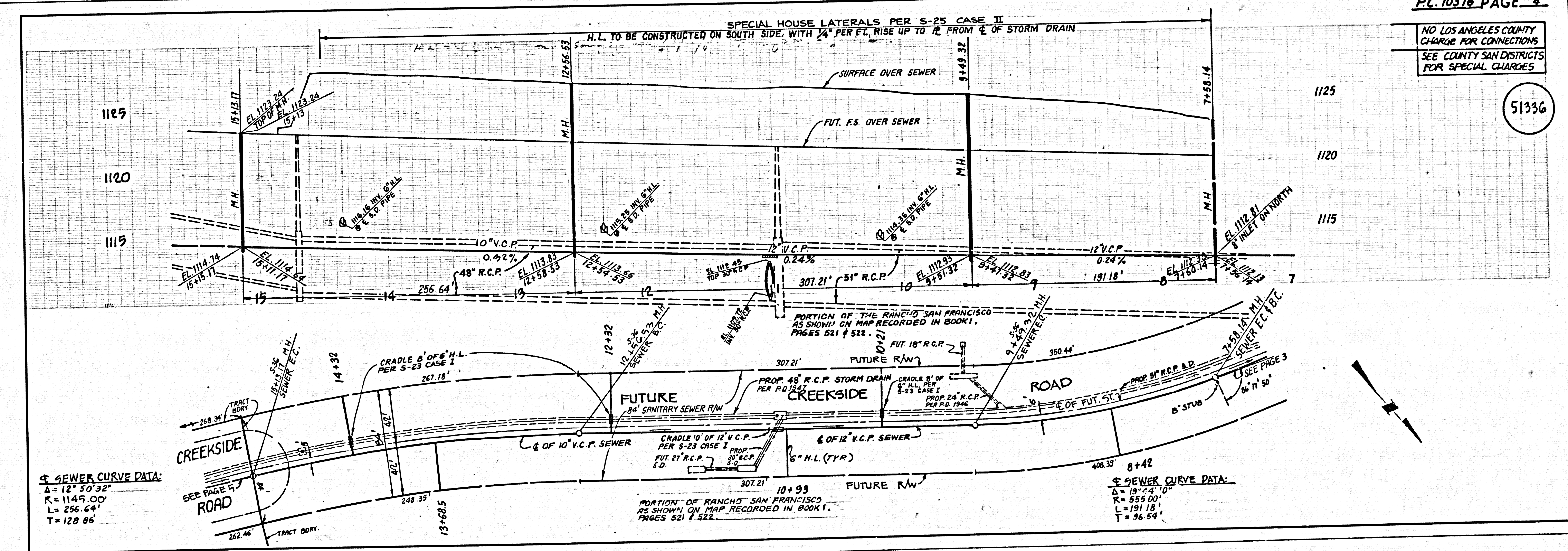
NO LOS ANGELES COUNTY CHARGE FOR CONNECTIONS SEE COUNTY SAN DISTRICTS FOR SPECIAL CHARGES

51335



NO LOS ANGELES COUNTY CHARGE FOR CONNECTIONS SEE COUNTY SAN DISTRICTS FOR SPECIAL CHARGES

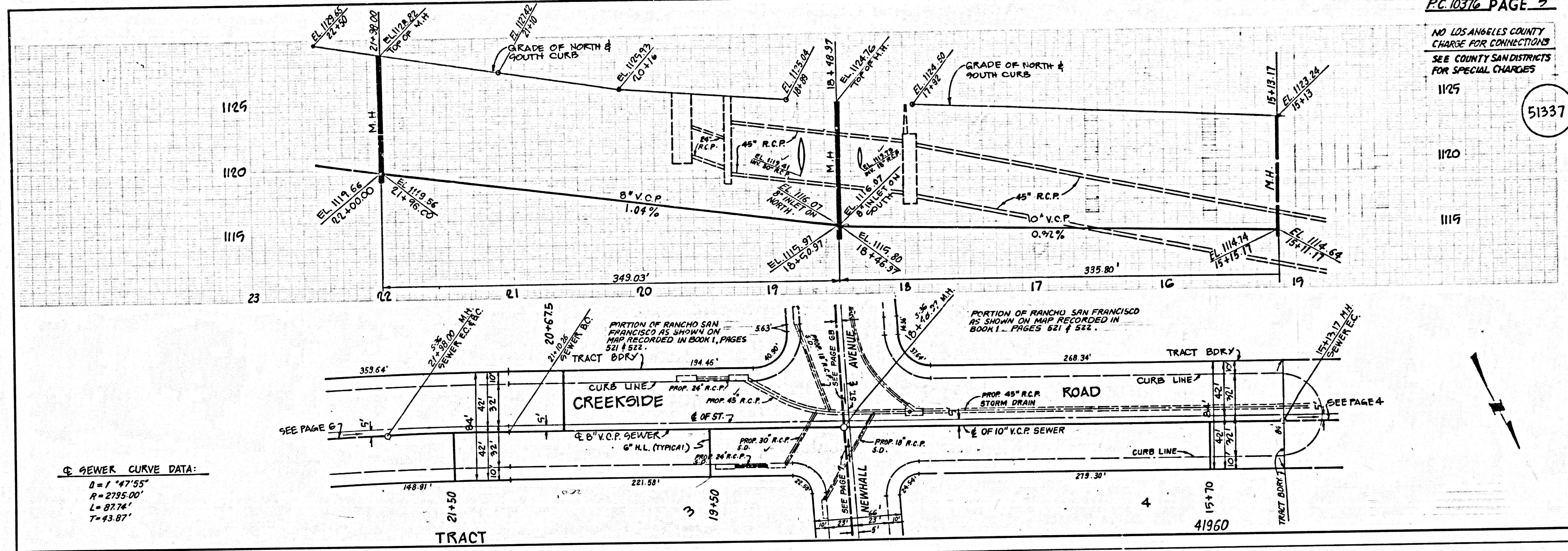
51336



5
PC 10376
CS 10376

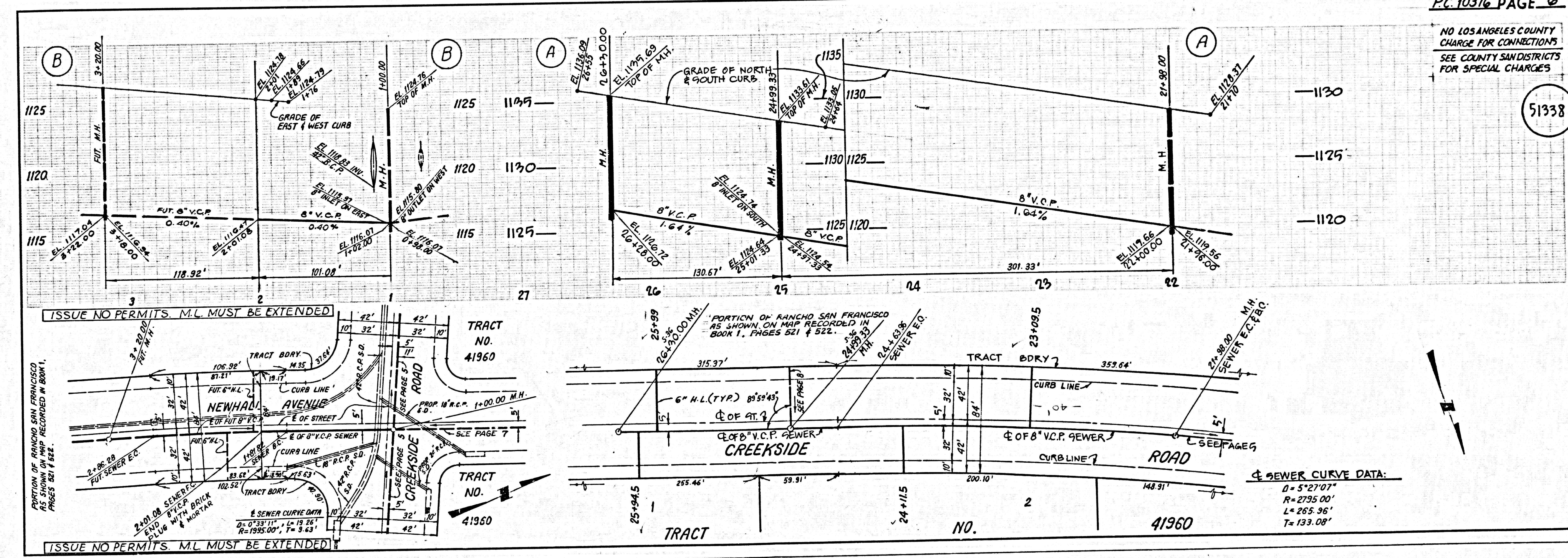
NO LOS ANGELES COUNTY CHARGE FOR CONNECTIONS SEE COUNTY SAN DISTRICTS FOR SPECIAL CHARGES

51337

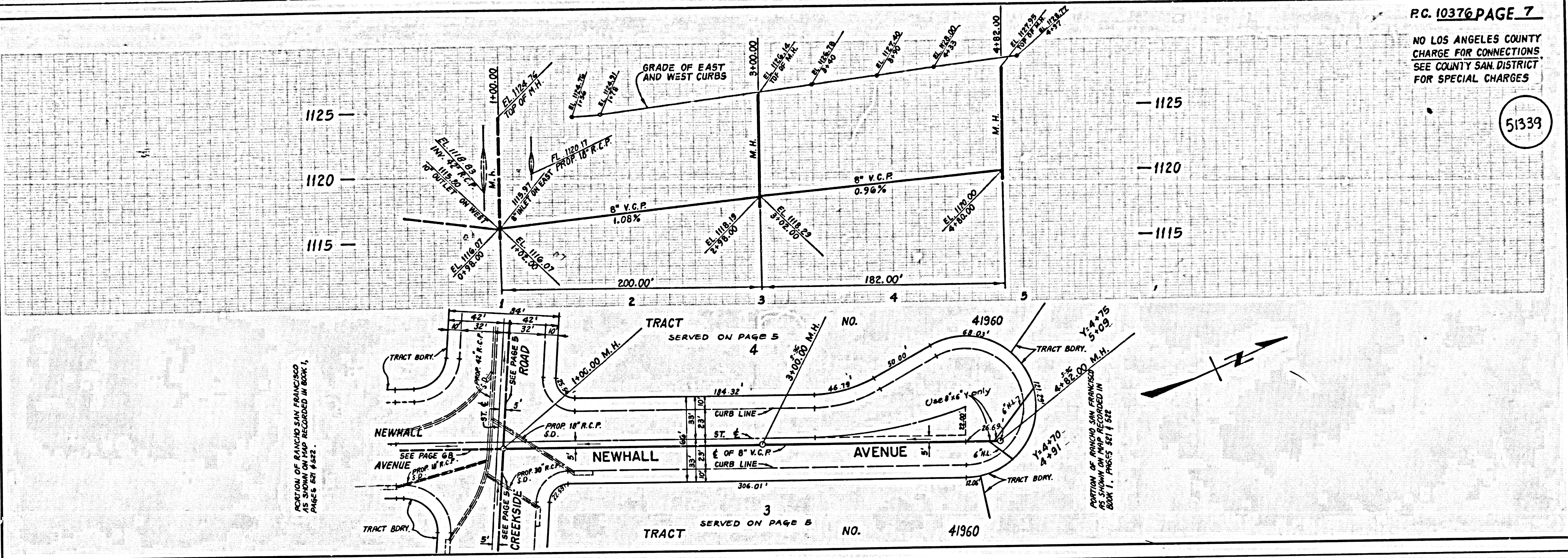


NO LOS ANGELES COUNTY CHARGE FOR CONNECTIONS SEE COUNTY SAN DISTRICTS FOR SPECIAL CHARGES

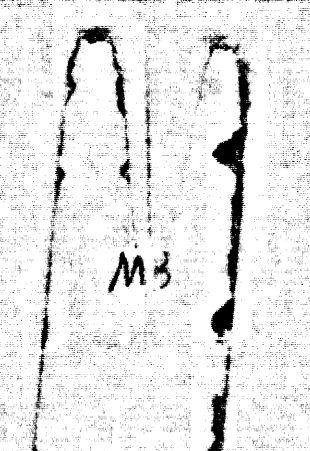
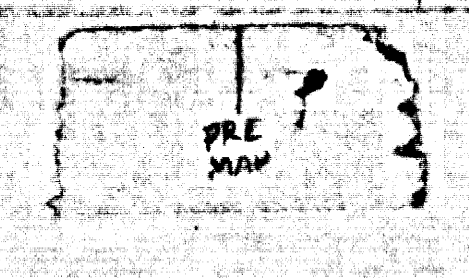
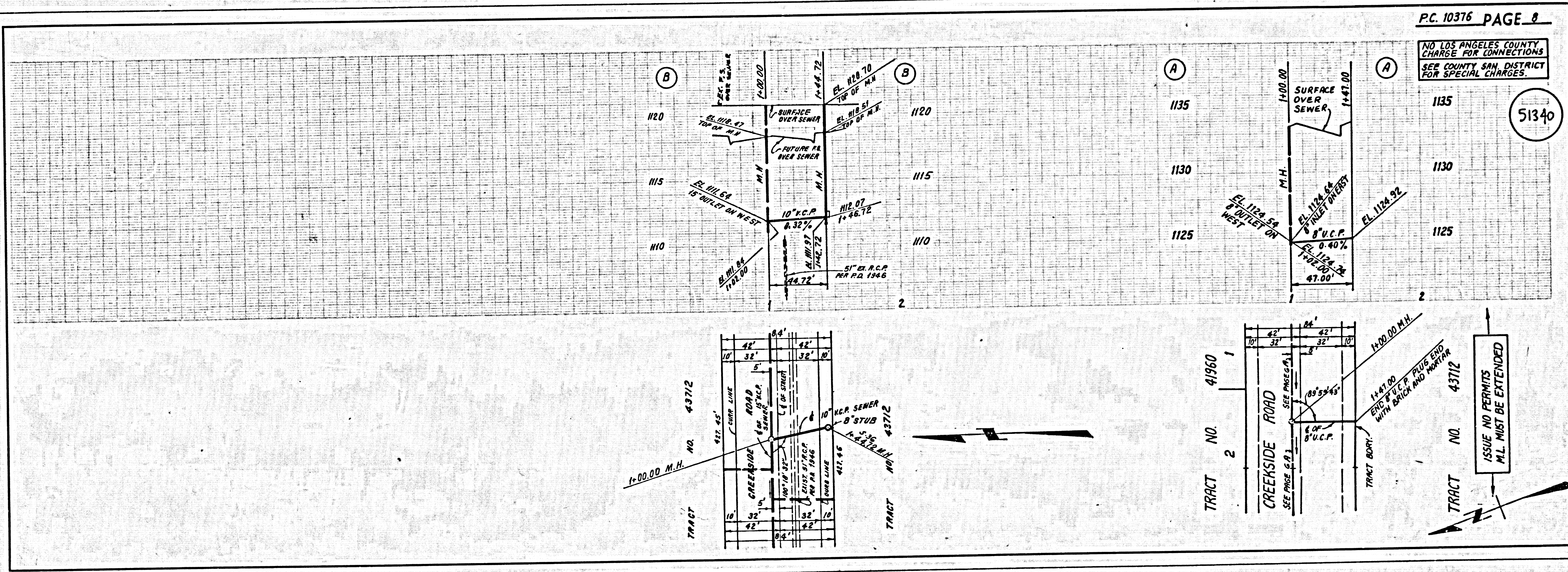
51338



COL. 39 OPER. ON TRACT



STCUL B C 08214 ON T2ART



ISSUE NO PERMITS
M.L. MUST BE EXTENDED