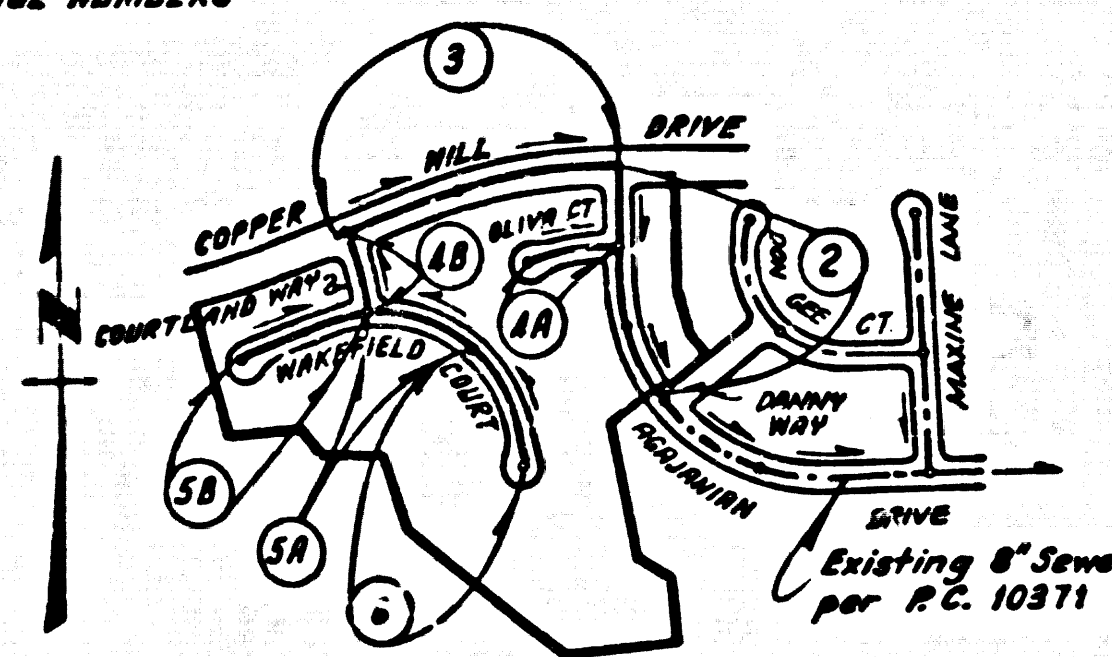


B.M. CL 3825 ELEV. 1296.147
 1.625 IN. DIA. IN. HE. CON. CONC. BASE CITY OF W.P.
 TOWER #18 N/16 150 FT. W. BOUQUET CANYON RD.
 0.1 MI. N. W. W. CIL. SUSAN BETH WAY (M. 204-7 1966)
 NEWHALL QUAD. 1978

NOTE:
 NUMBERS IN CIRCLES
 INDICATE PAGE NUMBERS



INDEX MAP
 TRACT NO. 34988
 P.C. NO. 10379
 Scale: 1" = 600'

REVISION NO. 1 DATE: 8/24/87
 Pgs. 1-8 CHANGED STREET NAMES: FROM MILLINGTON WAY TO DANNY WAY
 FROM REGAJANIAN LANE TO REGAJANIAN DRIVE
 FROM RIDGELY COURT TO DIV. USE COURT
 FROM STOCKBRIDGE LANE TO ANNINE LANE
 APPROVED: [Signature] 9/10/87
 DEPARTMENT OF PUBLIC WORKS

DOUBLE SCALE

CONSTRUCTION NOTES: (CONT.)

16. WYE BRANCHES ONLY MAY BE USED FOR CONNECTIONS TO MAIN LINE SEWER IF A.B.S.C.P. IS USED.
17. ALL JOINTS BETWEEN CAST IRON PIPE AND A.B.S.C.P. SHALL BE MADE WITH APPROVED FITTINGS.
18. FULL COMPLIANCE WITH PART IV OF THE SPECIAL PROVISIONS IS REQUIRED FOR THE INSTALLATION OF A.B.S. COMPOSITE PIPE AND A.B.S. SOLID WALL HOUSE LATERALS.
19. MANHOLE WATER STOP BASKETS AND CLAMPS ARE REQUIRED FOR THE CONNECTION OF A.B.S. COMPOSITE PIPE TO MANHOLE STRUCTURES.
20. A.B.S. SOLID WALL PIPE MUST BE USED FOR WYE AND HOUSE LATERAL CONNECTIONS TO A.B.S. COMPOSITE MAINLINE SEWER PIPE.
21. 3 DEGREE DEFLECTION COUPLERS SHALL BE USED TO ACCOMPLISH RADIUS OF CURVATURE LESS THAN 300' FOR 8" SPANS.
22. A.B.S. COMPOSITE PIPE SHALL BE BEADED IN CONFORMANCE WITH THE TABLE IN SECTION 8-31 OF PART IV OF SPECIAL PROVISIONS.

NO CONNECTION FOR THE DISPOSAL OF INDUSTRIAL WASTES SHALL BE MADE TO SEWERS SHOWN ON THESE DRAWINGS UNTIL A PERMIT FOR INDUSTRIAL WASTEWATER DISCHARGE HAS BEEN ISSUED BY THE SANITATION DISTRICTS FOR SAID CONNECTION.

BEFORE BREAKING INTO OR CONSTRUCTION ON A COUNTY SANITATION DISTRICT SEWER AND PRIOR TO FINAL ACCEPTANCE OF THE PROJECT, SANITATION DISTRICT INSPECTOR SHALL BE NOTIFIED BY PHONE (818) 962-8605 SO THAT REQUIRED INSPECTION CAN BE MADE.

ISSUE NO HOUSE CONNECTION PERMITS UNTIL OUTLET SEWER P.C. 10379 IS ACCEPTED FOR PUBLIC USE BY THE COUNTY OF LOS ANGELES.

GENERAL NOTES:

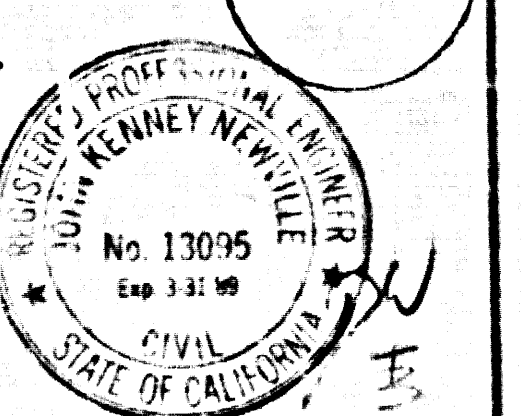
1. ELEVATIONS ARE IN FEET ABOVE U.S.C. & G.S. SEA LEVEL, DATUM OF 1929.
2. NO REVISIONS SHALL BE MADE IN THESE PLANS WITHOUT THE APPROVAL OF THE DIRECTOR OF PUBLIC WORKS.
3. NO REPRESENTATIVE OF THE OFFICE OF PUBLIC WORKS SHALL SURVEY OR LAY OUT ANY PORTION OF THE WORK.
4. GRADES TO WHICH THIS IMPROVEMENT IS TO BE CONSTRUCTED ARE SHOWN ON PLANS AND PROFILES. GRADE POINTS FOR TOP OF CURBS, CENTER LINE OF STREETS, OR CENTER LINE OF ALLEYS ARE SHOWN BY CURVES OR PROFILES AT ALL POINTS BETWEEN DESIGNATED POINTS THE GRADE SHALL BE ESTABLISHED SO AS TO CONFORM TO A STRAIGHT LINE DRAWN BETWEEN SAID DESIGNATED POINTS.
5. THE PRIVATE ENGINEER SHALL FURNISH THE PROFILES WITH GRADE SHEETS AND STATIONING FOR ALL HOUSE LATERALS AND "T" OR "Y" BRANCHES AND SHALL PROVIDE STAKES FOR LATERAL LOCATIONS WITH STATIONING PLAIN MARKED. ALL HOUSE LATERALS SHALL BE CONSTRUCTED IN A STRAIGHT ALIGNMENT AT RIGHT ANGLES FROM THE MAIN LINE SEWER EXCEPT AS SHOWN ON THE PLANS. HOUSE LATERALS FROM CHIMNEYS SHALL NOT HAVE AN ANGLE OF LESS THAN 45° WITH THE MAIN LINE SEWER. ANY CHANGE IN ALIGNMENT SHALL BE REQUESTED IN WRITING BY THE PRIVATE ENGINEER.
6. THE PRIVATE ENGINEER SHALL FURNISH THE HOUSE LATERAL DESIGN AT THE PROPERTY LINE BELOW THE TOP OF CURB ELEVATION FOR EACH HOUSE LATERAL ON THE GRADE SHEET.
7. BEFORE WORK CAN BE STARTED, THE CONTRACTOR MUST OBTAIN A PERMIT TO EXCAVATE IN THE CITY OF LOS ANGELES FROM THE COUNTY OF LOS ANGELES, DIVISION OF PUBLIC WORKS, 120 SOUTH SPRING STREET, LOS ANGELES, CALIFORNIA.
8. APPROVAL OF THIS PLAN BY THE COUNTY OF LOS ANGELES DOES NOT CONSTITUTE A REPRESENTATION AS TO THE ACCURACY OF THE LOCATION OF THE EXISTENCE OR NON-EXISTENCE OF ANY UNDERGROUND UTILITY PIPE OR STRUCTURE WITHIN THE LIMITS OF THIS PROJECT. THIS NOTE APPLIES TO ALL PAGES.
9. REFER TO SECTION 7.04.1 OF THE STANDARD SPECIFICATIONS REGARDING SAFETY ORDERS.
10. PRIOR TO THE INSTALLATION OF THE REQUIRED SEWER CONSTRUCTION PERMIT, THE CONTRACTOR SHALL OBTAIN AN AMPLIFIED WITH THE "OFFICE OF PUBLIC WORKS" A PERMIT TO EXCAVATE IN COUNTY STREETS FROM THE "OFFICE OF THE COUNTY ENGINEER" A PERMIT FOR EXCAVATIONS AND TRENCHES FROM THE STATE OF CALIFORNIA FROM THE INDUSTRIAL SAFETY AND A CERTIFICATE OF WORKERS COMPENSATION INSURANCE WITH THE DEPARTMENT OF PUBLIC WORKS, 120 SOUTH SPRING STREET, LOS ANGELES, CALIFORNIA. THESE PERMITS SHALL BE OBTAINED PRIOR TO CANCELLATION OF POLICY.

CONSTRUCTION NOTES:

1. WORK SHALL BE CONSTRUCTED ACCORDING TO THE STANDARD SPECIFICATIONS FOR PUBLIC WORKS CONSTRUCTION, 1986 EDITION WITH THE SUPPLEMENT, PART OF PUBLIC WORKS, DATED 05-15-87 AND SHALL BE PROTECTED ONLY IN THE PRESENCE OF THE COUNTY INSPECTOR OF PUBLIC WORKS.
2. THE CONTRACTOR SHALL NOTIFY THE CONSTRUCTION DIVISION-PUBLIC WORKS BY TELEPHONE 818-228-8281 AT LEAST THIRTY-FOUR HOURS BEFORE STARTING ANY WORK UNDER THIS CONTRACT.
3. HOUSE LATERALS TO BE CONSTRUCTED WITH INVERTS AT PROPERTY LINE 8 FEET BELOW CURB GRADE EXCEPT AS NOTED.
4. WYE OR "T" BRANCHES MAY BE USED FOR CONNECTIONS TO MAINLINE SEWERS EXCEPT AS NOTED.
5. ALL STRUCTURES SHALL BE EITHER BRICK MANHOLES PER S-2 OR PRECAST CONCRETE MANHOLES PER S-3, EXCEPT AS NOTED.
6. PROVIDE STAKES OF THE PROPERTY LINE OR PROPERTY LINES PRODUCED AT RIGHT ANGLES TO THE SEWER LINE AT THE CENTER LINE OF EACH MANHOLE.
7. MANHOLE TOPS IN UNIMPROVED RIGHTS OF WAY TO BE SIX INCHES ABOVE FINISHED GRADE.
8. VITRIFIED CLAY PIPE JOINTS SHALL BE TYPE "D" OR "B" PER STANDARD SPECIFICATIONS SECTION 308-3.
9. IF A POWER POLE IS WITHIN THREE FEET OF THE SEWER, THE SEWER SHALL BE ENCASED, PER S-23, CASE 8, TWO FEET ON EACH SIDE FROM THE POINT OF INTERFERENCE.
10. IF DURING THE COURSE OF CONSTRUCTION IT IS DETERMINED THAT THERE IS LESS THAN FOUR FEET OF COVER OVER THE TOP OF A MAIN LINE OR HOUSE LATERAL SEWER WHICH IS NOT APPROVED BY THE COUNTY OF LOS ANGELES, THE PIPE SHALL BE ENCASED PER S-23, CASE 8 UNLESS OTHERWISE APPROVED BY THE DIRECTOR OF PUBLIC WORKS.
11. ALL JOINTS BETWEEN CAST IRON PIPE AND VITRIFIED CLAY PIPE SHALL BE MADE WITH A RUBBER BELLEVUE JOINT, TYPE "C" OR "D" (WITH BUSHING IF NECESSARY) PER STANDARD SPECIFICATIONS SECTION 308-3.
12. SEWERS TO BE TESTED FOR LEAKAGE PER SECTION 308-1.4 OF THE STANDARD SPECIFICATIONS AND SPECIAL PROVISIONS.
13. RESURFACE ALL TRENCHES WITHIN PAVED AREAS TO MEET L.A. COUNTY ROAD DEPT. OR CALIFORNIA STATE HIGHWAY REQUIREMENTS IN ACCORDANCE WITH PERMITS.
14. FULL COMPLIANCE WITH SECTION 801.1.1 OF THE S.D.S. S.P.C. WILL BE REQUIRED FOR BACKFILL IN STREETS. CERTIFICATION OF BACKFILL COMPACTION AND LAND EQUIVALENTS BY A QUALIFIED, REGISTERED TESTING LABORATORY SHALL BE PROVIDED BY THE PERMITTEE PRIOR TO THE ISSUANCE OF A CERTIFICATE OF PARTIAL ACCEPTANCE.
15. SPECIAL BACKFILL IN EASEMENT CONSTRUCTION IN BACKLIES, TRENCH AND REPLACE OTHER EARTH SO AS TO ACHIEVE THE NATURAL OR PREVIOUS GRADES AND SLOPES SHOWN ON THE GRADING PLAN APPROVED FOR THIS DEVELOPMENT BY THE LAND DIVISION. (ALL BACKFILL AND EARTH REMOVED SHALL BE COMPACTED TO A MINIMUM OF 90% OF MAXIMUM DENSITY PER A.S.T.M. STD. METHOD OF TEST 998.87 BY APPROVED, ACCEPTABLE CERTIFICATION OF SUCH COMPACTION SHALL BE SUBMITTED TO THE CONSTRUCTION DIVISION-PUBLIC WORKS.

TRACT NO. 34988
PRIVATE CONTRACT NO. 10379
INDEX A-33

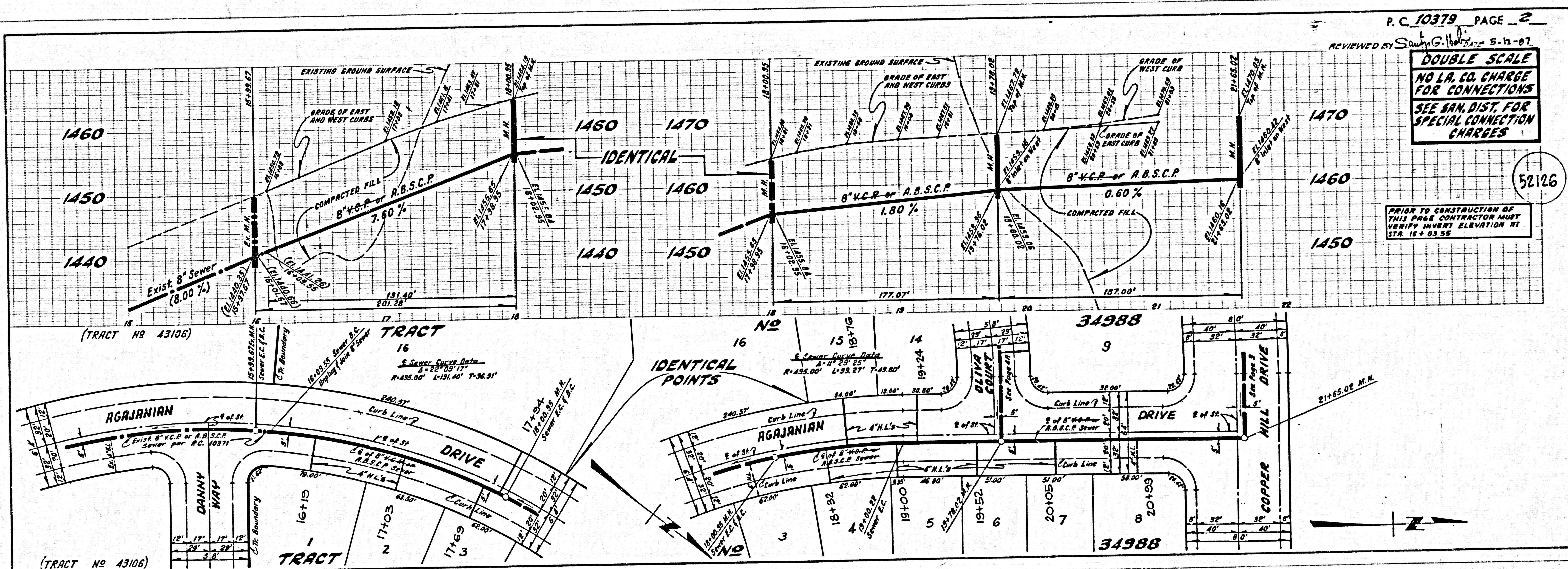
3 SHEETS, 6 PAGES
 SCALE: VERT. 1" = 4'
 HORIZ. 1" = 40'
 FEB. 1985
 PREPARED IN THE OFFICES OF
ENGINEERING SERVICE CORPORATION
 8017 BRADLEY PARKWAY, SUITE 110, GLENDALE, CALIF. 91205
 BY: [Signature]
 REG. C.E. NO. 13095



THE FOLLOWING LATEST REVISED STANDARD PLANS ON FILE IN THE OFFICE OF THE PUBLIC WORKS SHALL APPLY IN THE CONSTRUCTION OF THIS PROJECT:

LEGEND	S-1
MINIMUM PUBLIC SAFETY REQUIREMENTS	S-2
BRICK MANHOLE	S-3
STANDARD MANHOLE STEP	S-17
BRICK FOR SEWER PIPE	S-21
GRADING AND FINISHMENT	S-22
WYE OR "T" SUPPORT	S-26
ALLOWABLE TRENCH WIDTHS	S-33
LOCATING MANHOLE FRAME AND COVER	S-35
NON-REINFORCED PRECAST CONCRETE MANHOLE	S-36

COUNTY OF LOS ANGELES, CALIFORNIA
 THOMAS R. TIDEMANSON, DIRECTOR OF PUBLIC WORKS
 CHARLES W. CARPY, CHIEF ENGINEER
 APPROVED: [Signature] 5/13/87
 CHECKED: [Signature] 5/15/87
 REG. C.E. NO. 10041
 Santa Clarita Valley BLDG. DIST. 8-2

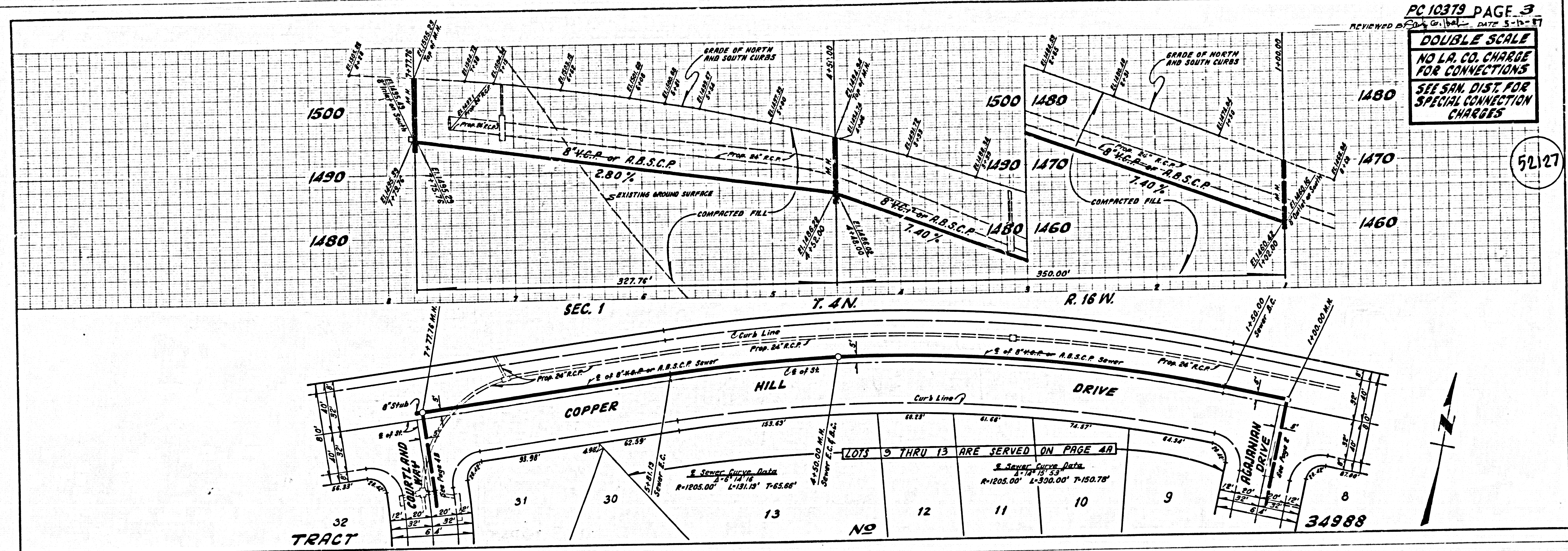


DOUBLE SCALE
 NO L.A. CO. CHARGE
 FOR CONNECTIONS
 SEE SAN. DIST. FOR
 SPECIAL CONNECTION
 CHARGES

PRIOR TO CONSTRUCTION OF
 THIS PROJECT CONTRACTOR MUST
 VERIFY INVERT ELEVATION AT
 STR. 16 + 03.55

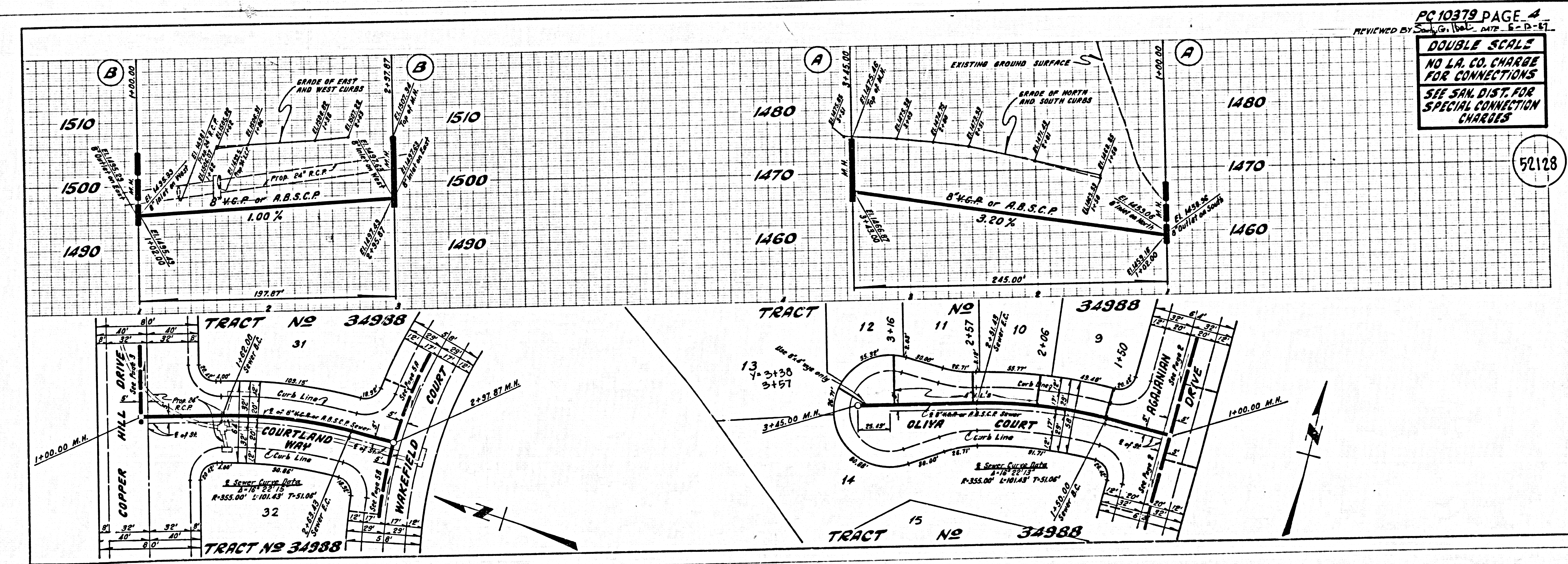
52126

1660129 88887 09 70997



PC 10379 PAGE 3
 REVIEWED BY [Signature] DATE 5-12-57
DOUBLE SCALE
 NO L.A. CO. CHARGE
 FOR CONNECTIONS
 SEE SAN. DIST. FOR
 SPECIAL CONNECTION
 CHARGES

52127

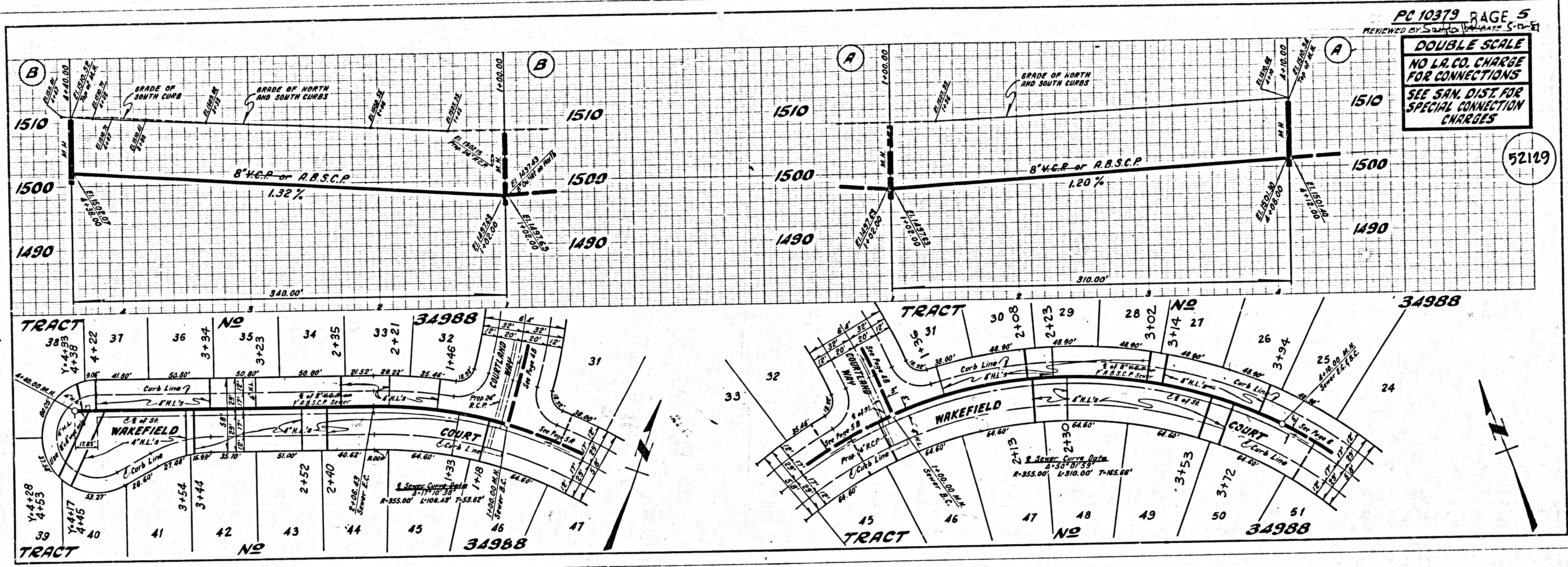


PC 10379 PAGE 4
 REVIEWED BY [Signature] DATE 5-12-57
DOUBLE SCALE
 NO L.A. CO. CHARGE
 FOR CONNECTIONS
 SEE SAN. DIST. FOR
 SPECIAL CONNECTION
 CHARGES

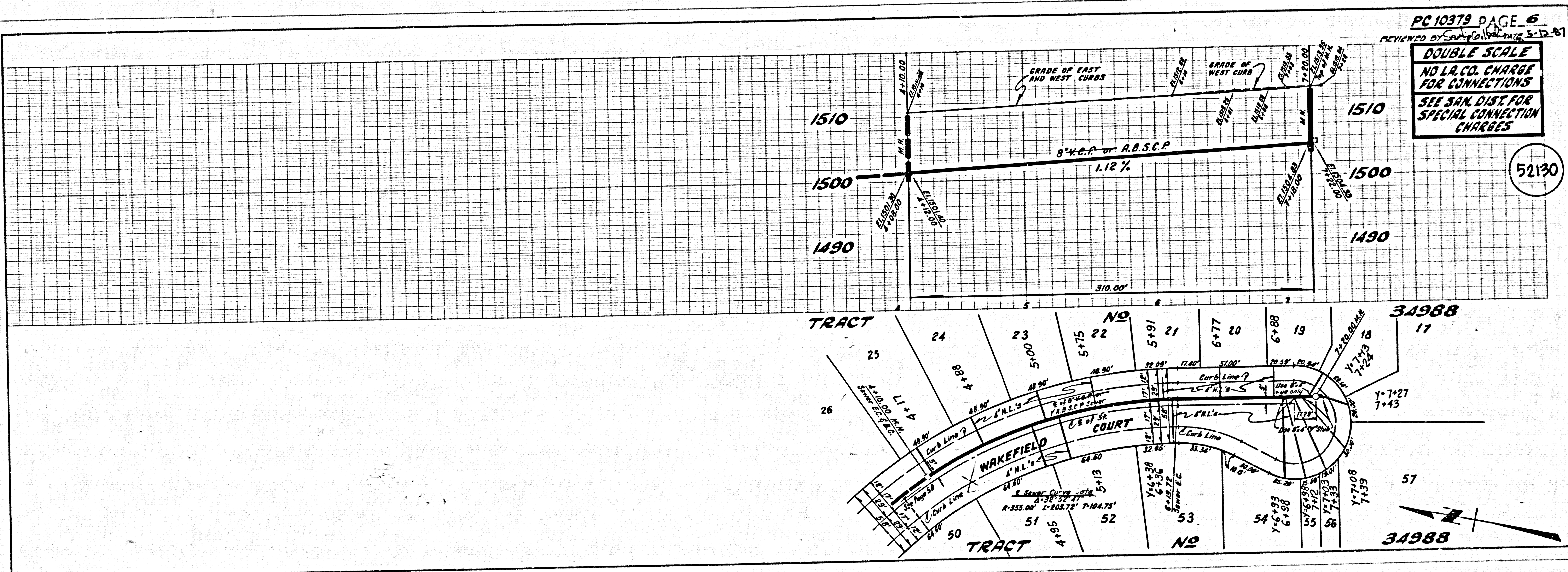
52128

S
 05301 29 8888 0A 79A7

3



PC 10379 PAGE 6
REVIEWED BY [Signature] DATE 5-12-81



PC 10379 PAGE 7
REVIEWED BY [Signature] DATE 5-12-81

PC 10379 PAGE 8
REVIEWED BY [Signature] DATE 5-12-81