

B.M. C.G. 1929 ELEV. 652.182  
 C.S. MONUMENT IN WALL 8" DOWN AT C/L INT. OF PATRIOT ROAD AND BREA CANYON CUT-OFF ROAD 171 FT. SOUTH OF ESQUILINE AVE. (USE NORTH EDGE) OTTERBEIN QUAD. 19 75

**PRIVATE ENGINEER'S NOTICE TO CONTRACTORS**

The existence and location of any underground utility pipes or structures shown on these plans are obtained by a search of the available records. To the best of our knowledge there are no existing utilities except as shown on these plans. The contractor is required to take due precautionary measures to protect the utility lines shown and any other lines not of record or not shown on these plans. The contractor shall be responsible for notifying "UNDERGROUND SERVICE ALERT" at 1-800-422-4133 two working days prior to any excavation or construction.

*J.M.*  
 Registered Engineer R.C.E. No. 19233

**GENERAL NOTES CONT'D.**

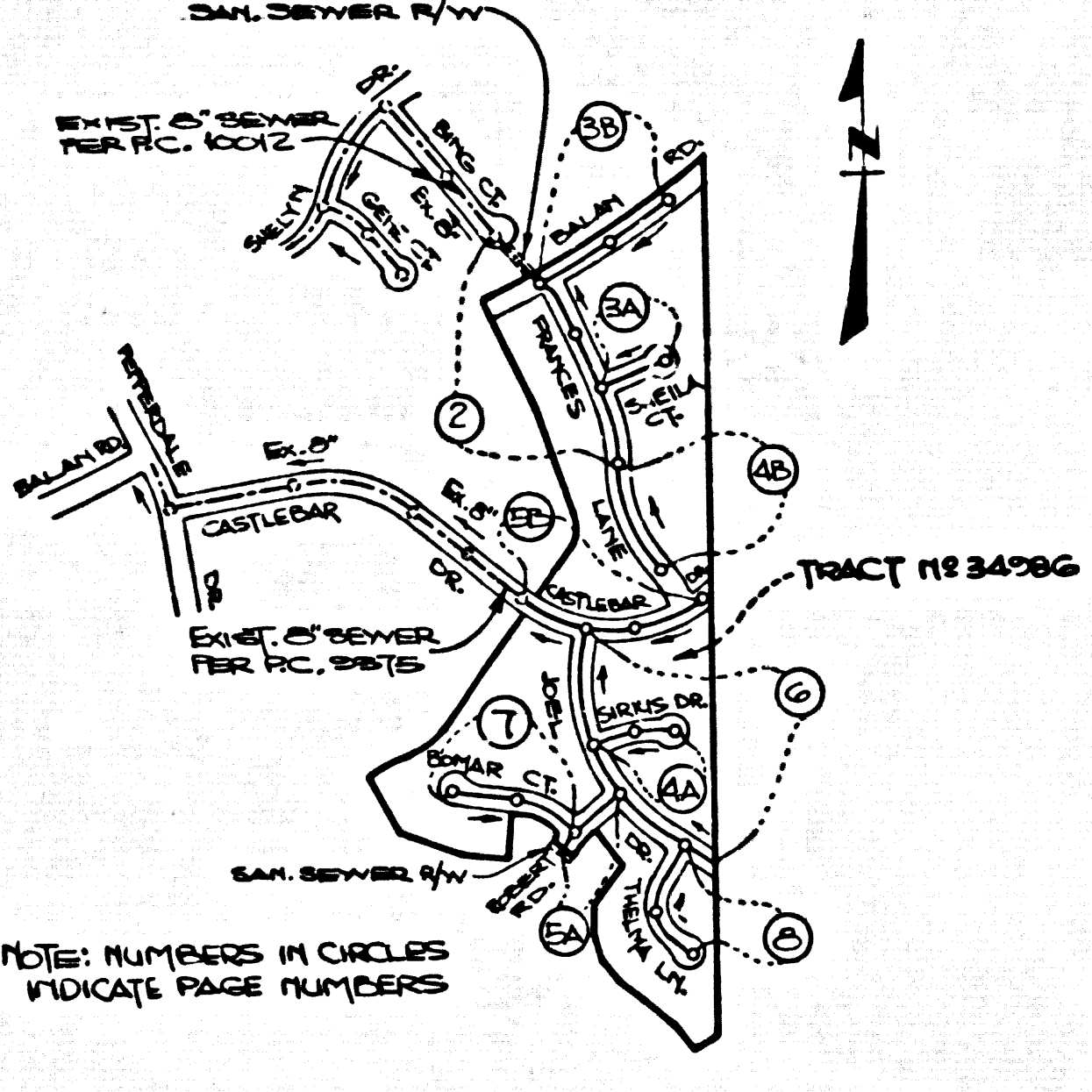
12. ALL REFERENCES ON THIS PLAN TO THE COUNTY ENGINEER, THE ROAD DEPARTMENT, OR THE FLOOD CONTROL DISTRICT SHALL APPLY TO THOSE APPROPRIATE SECTIONS OF THE DEPARTMENT OF PUBLIC WORKS.

**CONSTRUCTION NOTES CONT'D.**

16. FULL COMPLIANCE WITH PART IV OF THE SPECIAL PROVISIONS IS REQUIRED FOR THE INSTALLATION OF A.B.S. COMPOSITE PIPE.
17. HANDED WATER STOP BASKETS AND CLAMPS ARE REQUIRED FOR THE CONNECTION OF A.B.S. COMPOSITE PIPE TO MANHOLE STRUCTURES.
18. A.B.S. SOLID WALL PIPE MUST BE USED FOR VYE AND HOUSE LATERAL CONNECTIONS TO A.B.S. COMPOSITE MAINLINE SEWER PIPE.
19. A.B.S. COMPOSITE PIPE SHALL BE REDDED IN CONFORMANCE WITH THE TABLE IN SECTION B-3-1 OF PART IV OF THE SPECIAL PROVISIONS.
20. THREE DEGREE DEFLECTION COUPLERS ARE REQUIRED FOR RADII OF CURVATURE LESS THAN 300 FEET WHEN USING "A" A.B.S. COMPOSITE PIPE.
21. NO CONNECTIONS FOR DISPOSAL OF INDUSTRIAL WASTE IS ALLOWED IF A.B.S. COMPOSITE PIPE IS USED.
22. SEWER LINE CURVATURE SHALL NOT BE ACHIEVED BY PULLING OF JOINTS OR BENDING PIPE ENDS WHEN USING PLASTIC PIPE INCLUDING A.B.S. COMPOSITE PIPE.
23. ALL VYES AND/OR HOUSE LATERALS ARE TO BE LOCATED AT LEAST FIVE FEET APART AND WHEN POSSIBLE, NOT CLOSER THAN FIVE FEET TO ANY MANHOLE.
24. A.B.S. SOLID WALL PIPE IS NOT ACCEPTABLE FOR USE AS MAINLINE SEWER.
25. ONLY VYE BRANCHES ARE TO BE USED FOR CONNECTION TO A.B.S. COMPOSITE MAINLINE SEWER PIPE.

NO CONNECTION FOR THE DISPOSAL OF INDUSTRIAL WASTES SHALL BE MADE TO SEWERS SHOWN ON THESE DRAWINGS UNTIL A PERMIT FOR INDUSTRIAL WASTEWATER DISCHARGE HAS BEEN ISSUED BY THE SANITATION DISTRICTS FOR SAID CONNECTION.

BEFORE BREAKING INTO OR CONSTRUCTION ON A COUNTY SANITATION DISTRICT SEWER AND PRIOR TO FINAL ACCEPTANCE OF THE PROJECT, SANITATION DISTRICT INSPECTOR SHALL BE NOTIFIED BY PHONE 818 - 962-8605 SO THAT REQUIRED INSPECTION CAN BE MADE.



INDEX MAP  
 TRACT NO. 34986  
 P.C. 10383  
 SCALE: 1"=600'

**GENERAL NOTES:**

1. ELEVATIONS ARE IN FEET ABOVE U.S.C. & G.S. SEA LEVEL DATUM OF 1988.
2. NO REVISIONS SHALL BE MADE IN THESE PLANS WITHOUT THE APPROVAL OF THE PUBLIC WORKS DEPT.
3. NO REPRESENTATIVE OF THE COUNTY ENGINEER WILL SURVEY OR LAY OUT ANY PORTION OF THE WORK.
4. GRADES TO WHICH THIS IMPROVEMENT IS TO BE CONSTRUCTED ARE SHOWN ON PLANS AND PROFILES GRADE POINTS FOR TOP OF CURBS, CENTER LINE OF STREETS, OR CENTER LINE OF ALLEYS AND SHOWN BY CIRCLES ON PROFILES AT ALL POINTS BETWEEN DESIGNATED POINTS THE GRADE SHALL BE ESTABLISHED AS TO CONFORM TO A STRAIGHT LINE DRAWN BETWEEN SAID DESIGNATED POINTS.
5. THE PRIVATE ENGINEER SHALL FURNISH THE COUNTY ENGINEER WITH GRADE SHEETS AND STATIONING FOR ALL HOUSE LATERALS AND "Y" OR "T" BRANCHES AND SHALL PROVIDE STAKES FOR THEM AT THEIR PROPER LOCATIONS WITH STATIONING PLAINLY MARKED. ALL HOUSE LATERALS SHALL BE CONSTRUCTED IN A STRAIGHT ALIGNMENT AT RIGHT ANGLES FROM THE MAIN LINE SEWER EXCEPT WHERE SHOWN ON THE PLANS. HOUSE LATERALS FROM CHIMNEYS SHALL NOT HAVE AN ANGLE OF LESS THAN 45° WITH THE MAIN LINE SEWER. ANY CHANGE IN ALIGNMENT SHALL BE REQUESTED IN WRITING BY THE PRIVATE ENGINEER.
6. THE PRIVATE ENGINEER SHALL FURNISH THE HOUSE LATERAL DEPTH AT THE PROPERTY LINE BELOW THE TOP OF CURB ELEVATION FOR EACH HOUSE LATERAL ON THE GRADE SHEET.
7. BEFORE WORK CAN BE STARTED, THE CONTRACTOR MUST OBTAIN A PERMIT TO EXCAVATE IN COUNTY STREETS FROM THE L.A. COUNTY ROAD DEPT. DISTRICT OFFICE NO. 1 AND PAY A FEE TO THE COUNTY ENGINEER 300 S. VERMONT AVENUE, LOS ANGELES, CA 90005. TO COVER THE COST OF CONSTRUCTION INSPECTION AND RECORD PLANS.
8. IF WORK IS TO BE DONE IN A STATE HIGHWAY, A PERMIT MUST BE OBTAINED FROM THE STATE OF CALIFORNIA, DIVISION OF HIGHWAY, 120 SOUTH SPRING STREET, LOS ANGELES, CALIFORNIA.
9. APPROVAL OF THIS PLAN BY THE COUNTY OF LOS ANGELES DOES NOT CONSTITUTE A REPRESENTATION AS TO THE ACCURACY OF THE LOCATION OF OR THE EXISTENCE OR NON-EXISTENCE OF ANY UNDERGROUND UTILITY PIPE, OR STRUCTURE WITHIN THE LIMITS OF THE PROJECT. THIS NOTE APPLIES TO ALL PAGES.
10. REFER TO SECTION 7.10.4.1 OF THE STANDARD SPECIFICATIONS, REGARDING SAFETY ORDERS.
11. PRIOR TO THE ISSUANCE OF THE REQUIRED SEWER CONSTRUCTION PERMIT, THE CONTRACTOR SHALL OBTAIN AND FILE WITH THE COUNTY ENGINEER COPIES OF A PERMIT TO EXCAVATE IN COUNTY STREETS FROM THE LOS ANGELES COUNTY ROAD DEPARTMENT, COUNTY ENGINEER COPIES OF A PERMIT TO EXCAVATE IN COUNTY STREETS FROM THE STATE OF CALIFORNIA, DIVISION OF INDUSTRIAL SAFETY AND A CERTIFICATE OF INSURANCE FOR EXCAVATIONS AND TRENCHES FROM THE STATE OF CALIFORNIA, DIVISION OF INDUSTRIAL SAFETY AND A CERTIFICATE OF WORKER'S COMPENSATION INSURANCE WITH THE DEPARTMENT OF COUNTY ENGINEER, 300 SOUTH VERMONT, RM. 506, LOS ANGELES, CALIFORNIA 90005, NAMED AS THE CERTIFICATE HOLDER TO BE NOTIFIED 30 DAYS PRIOR TO CANCELLATION OF POLICY.

**CONSTRUCTION NOTES:**

1. WORK SHALL BE CONSTRUCTED ACCORDING TO THE STANDARD SPECIFICATIONS FOR PUBLIC WORKS CONSTRUCTION #988 AND COUNTY ENGINEER SPECIAL PROVISIONS FOR THE CONSTRUCTION OF SANITARY SEWERS (EDITION DATED SEPT. 21, 1978) AND SHALL BE PROSECUTED ONLY IN THE PRESENCE OF THE COUNTY ENGINEER.
2. THE CONTRACTOR SHALL NOTIFY THE CONSTRUCTION DIV. PUBLIC WORKS DEPT. TEL. (213)226-8281 AT LEAST 24 HOURS BEFORE STARTING ANY WORK UNDER THIS CONTRACT.
3. HOUSE LATERALS TO BE CONSTRUCTED WITH INVERTS AT PROPERTY LINE 8 FEET BELOW CURB GRADE EXCEPT AS NOTED.
4. VYE OR TEE BRANCHES MAY BE USED FOR CONNECTIONS TO MAINLINE SEWERS IF A.B.S.C.P. IS USED.
5. ALL STRUCTURES SHALL BE EITHER BRICK MANHOLES PER S-33 OR PRECAST CONCRETE MANHOLES PER S-38 EXCEPT AS NOTED.
6. PROVIDE STAKES ON THE PROPERTY LINE OR PROPERTY LINES PRODUCED AT RIGHT ANGLES TO THE SEWER LINE AT THE CENTER LINE OF EACH MANHOLE.
7. MANHOLE TOPS IN UNIMPROVED RIGHTS OF WAY TO BE SIX INCHES ABOVE FINISHED GRADE.
8. WITHIN CLAY PIPE JOINTS SHALL BE TYPE "D" OR "B" PER STANDARD SPECIFICATIONS SECTION 209-2.
9. IF A POWER POLE IS WITHIN THREE FEET OF THE SEWER, THE SEWER SHALL BE ENCASED PER S-22, CASE B, TWO FEET ON EACH SIDE FROM THE POINT OF INTERFERENCE.
10. DURING THE COURSE OF CONSTRUCTION IF IT IS DETERMINED THAT THERE IS LESS THAN FOUR FEET OF COVER OVER THE TOP OF A MAIN LINE OR HOUSE LATERAL SEWER, WHICH IS NOT INDICATED ON THE PLANS, THE PIPE SHALL BE ENCASED PER S-22, CASE "Y" UNLESS OTHERWISE APPROVED BY THE COUNTY ENGINEER.
11. ALL JOINTS BETWEEN CAST IRON PIPE AND WITHIN CLAY PIPE SHALL BE MADE WITH A RUBBER SLEEVE JOINT, TYPE "C" OR "D".
12. ALL JOINTS BETWEEN CAST IRON PIPE AND WITHIN CLAY PIPE SHALL BE MADE WITH APPROVED FITTINGS.
13. ALL JOINTS BETWEEN CAST IRON PIPE AND WITHIN CLAY PIPE SHALL BE MADE WITH APPROVED FITTINGS.
14. ALL JOINTS BETWEEN CAST IRON PIPE AND WITHIN CLAY PIPE SHALL BE MADE WITH APPROVED FITTINGS.
15. RESURFACE ALL TRENCHES WITHIN PAVED AREAS TO MEET L.A. COUNTY ROAD DEPT. OR CALIFORNIA STATE HIGHWAY REQUIREMENTS IN ACCORDANCE WITH PERMITS.
16. FULL COMPLIANCE WITH SECTION 305.1.5 OF THE SPECIAL PROVISIONS WILL BE REQUIRED FOR BACKFILL IN STREETS. CERTIFICATION OF BACKFILL COMPACTION AND SAND EQUIVALENTS BY A QUALIFIED, REGISTERED TESTING LABORATORY SHALL BE PROVIDED BY THE PERMITTEE PRIOR TO THE ISSUANCE OF A CERTIFICATE OF PARTIAL ACCEPTANCE.
17. SPECIAL BACKFILL IN EASEMENT CONSTRUCTION (A) BACKFILL TRENCH AND REPLACE OTHER EARTH SO AS TO ACHIEVE THE NATURAL OR FINISHED GRADES AND SLOPES SHOWN ON THE GRADING PLAN APPROVED FOR THIS DEVELOPMENT BY THE BUILDING DIVISION OR FINISHED GRADES AND SLOPES SHOWN ON THE GRADING PLAN APPROVED FOR THIS DEVELOPMENT BY THE BUILDING DIVISION (B) ALL BACKFILL AND EARTH REPLACED SHALL BE COMPACTED TO A MINIMUM OF 90% OF BATHING DENSITY PER A.S.T.M. STD. METHOD OF TEST D955 BY AS WOODWARD ACCEPTABLE CERTIFICATION OF SUCH COMPACTION SHALL BE SUBMITTED TO THE CONSTRUCTION DIV. PUBLIC WORKS DEPT.

DOUBLE SCALE

**SANITARY SEWERS**

TO BE CONSTRUCTED IN  
**TRACT NO. 34986**

PRIVATE CONTRACT NO. 10383

INDEX U-138  
 4 SHEETS, 8 PAGES

SCALE: VERT. 1"=4' HORIZ. 1"=40' APRIL, 1985

PREPARED IN THE OFFICES OF  
**LIND & HILLERUD, INC.**  
 2055 HUNTINGTON DRIVE  
 SAN MARINO, CA 91108

BY: *J.M.*  
 REG. C.E. 19233

THE FOLLOWING LATEST REVISED STANDARD PLANS ON FILE IN THE OFFICE OF THE DEPARTMENT OF PUBLIC WORKS SHALL APPLY IN THE CONSTRUCTION OF THIS PROJECT:

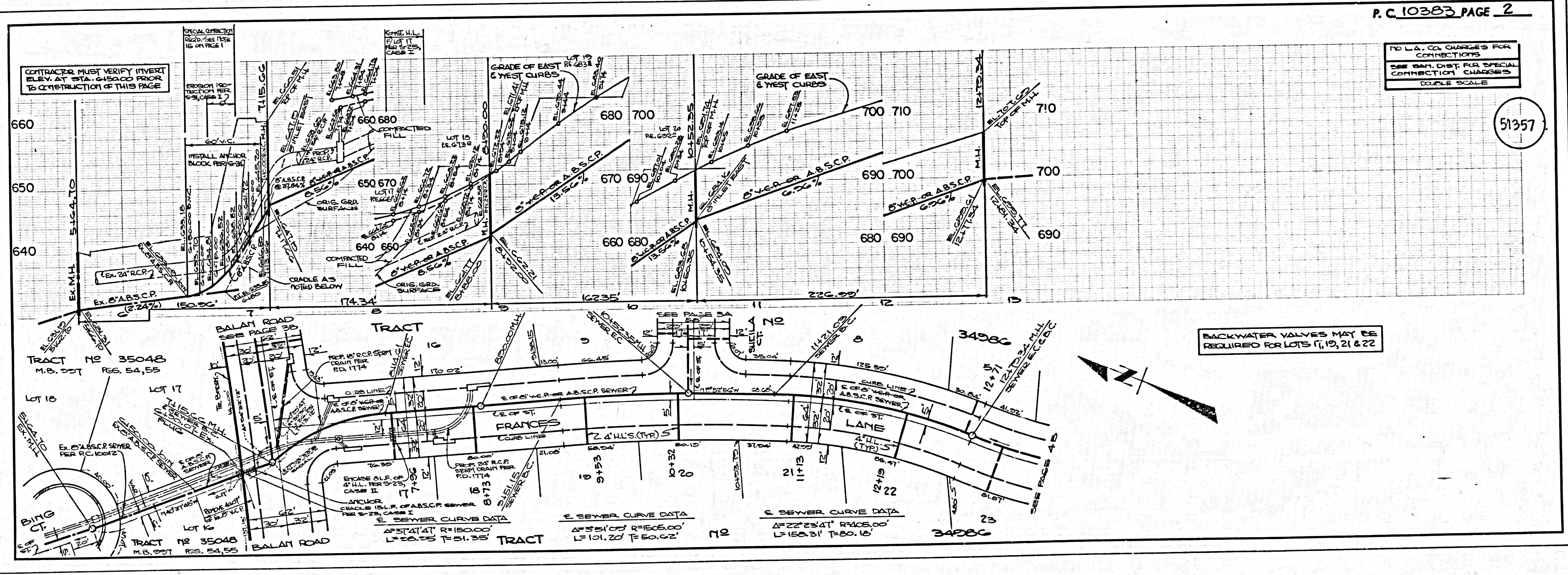
ISSUED	COUNTY	A.P.W.A.
MINIMUM PUBLIC SAFETY REQUIREMENTS	S-1	
BRICK SEWER MANHOLE	S-33	203-0
STANDARD MANHOLE STEP	S-37	
BEDDING FOR SEWER PIPE	S-38	
GRADING AND BRICKWORK	S-39	
VYE OR TEE SUPPORT	S-39	
ALLOWABLE TRENCH WIDTHS	S-39	
LOCKING MANHOLE FRAME AND COVER	S-39	
NON-REINFORCED PRECAST CONCRETE SEWER MANHOLE	S-40	200-0
ANCHOR BLOCK	S-24	
SPECIAL HOUSE LATERALS	S-25	
EROSION PROTECTION IN STEEP SLOPES	S-21	
BEDDING REQUIREMENTS FOR PLASTIC PIPE	S-21A	

**COUNTY OF LOS ANGELES, CALIFORNIA**

THOMAS A. TIDEMANSON, DIRECTOR  
 DEPARTMENT OF PUBLIC WORKS  
 APPROVED: *Carl J. Blum* 1/29/85 DATE

CHARLES W. CARRT, CHIEF ENGINEER  
 COUNTY ENGINEER  
 APPROVED: *Charles W. Carrt* DATE 1-31-86  
 REVISION: *Danell Johnson* 2-27-86 DATE

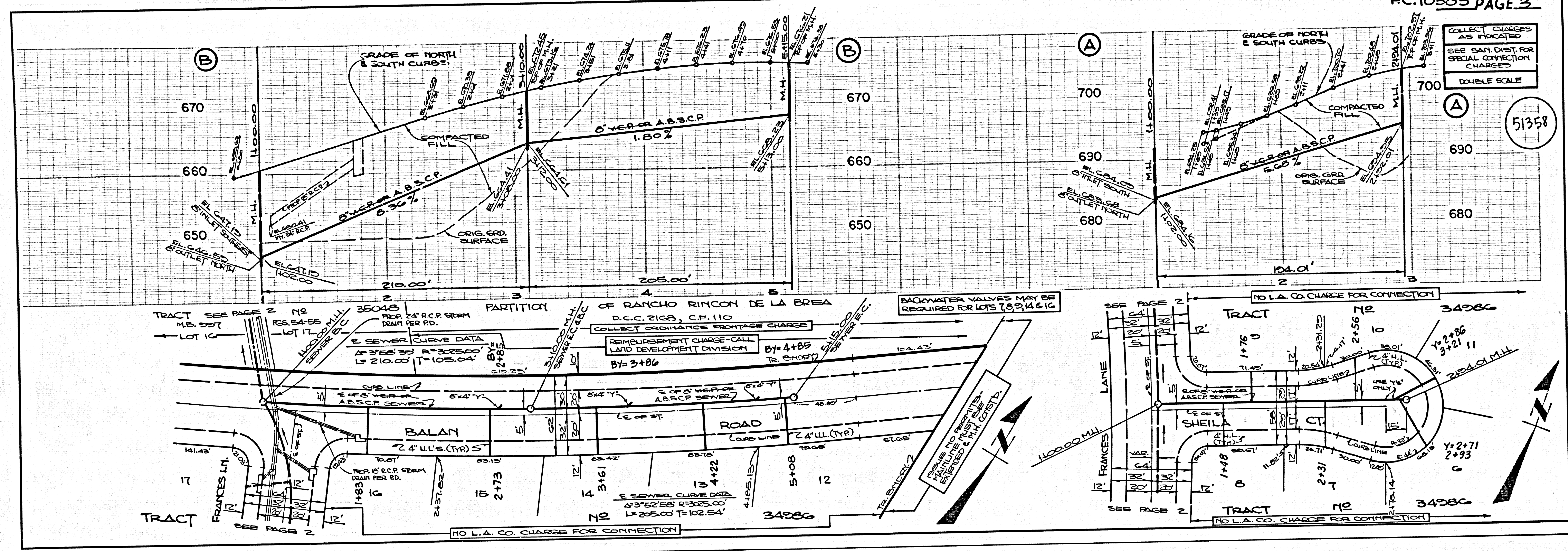
LA PUENTE BLDG. DIST. 2.00



NO L.A. CO. CHARGES FOR CONNECTIONS  
 SEE COUNTY DIST. FOR SPECIAL CONNECTION CHARGES  
 DOUBLE SCALE

BACKWATER VALVES MAY BE REQUIRED FOR LOTS 11, 19, 21 & 22

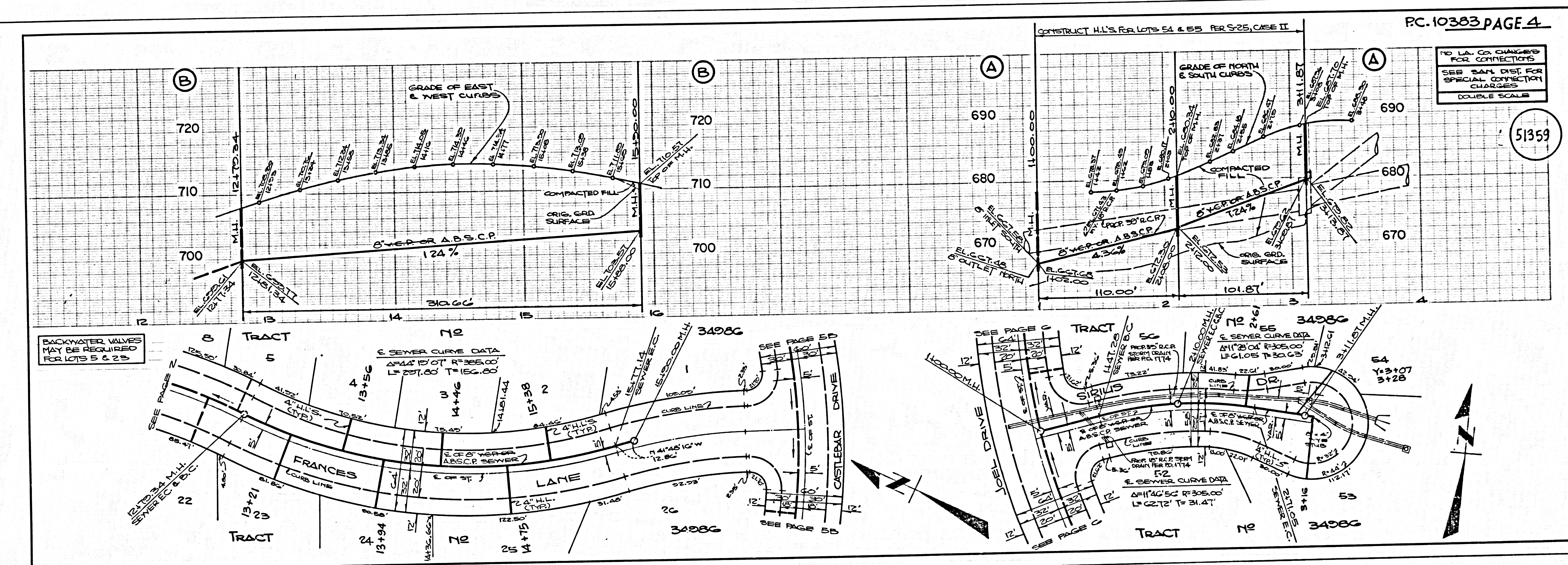




COLLECT CHARGES AS INDICATED  
SEE SAN. DIST. FOR SPECIAL CONNECTION CHARGES  
DOUBLE SCALE

51358

PC. 10383

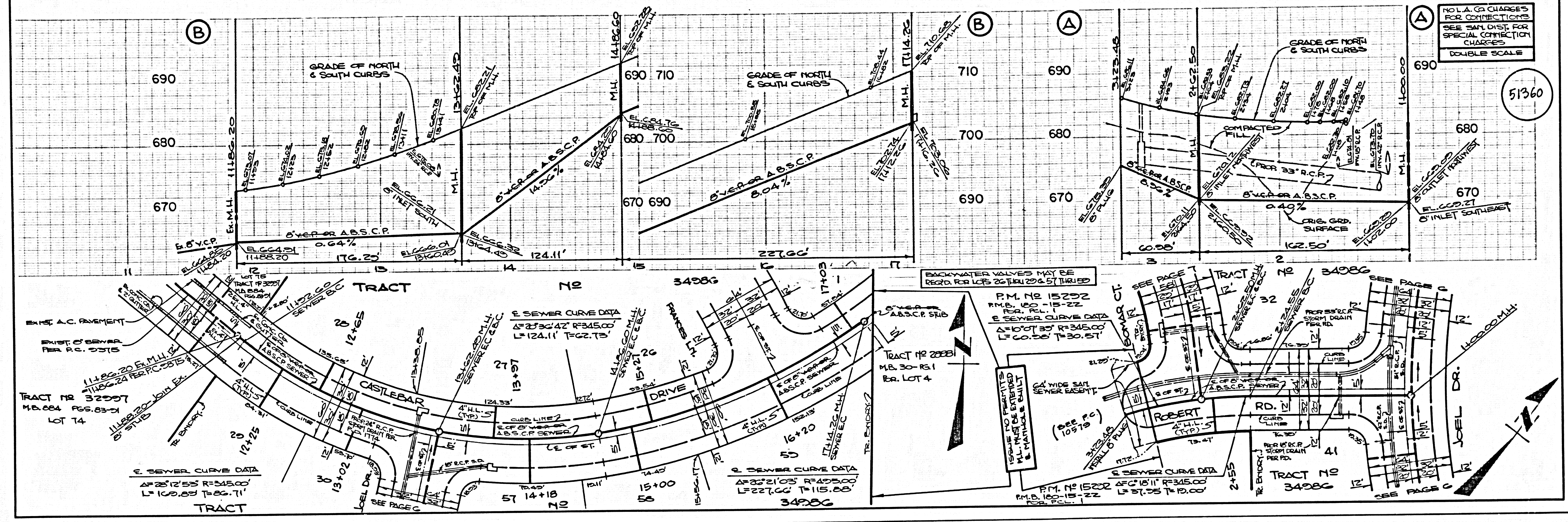


NO L.A. CO. CHARGES FOR CONNECTIONS  
SEE SAN. DIST. FOR SPECIAL CONNECTION CHARGES  
DOUBLE SCALE

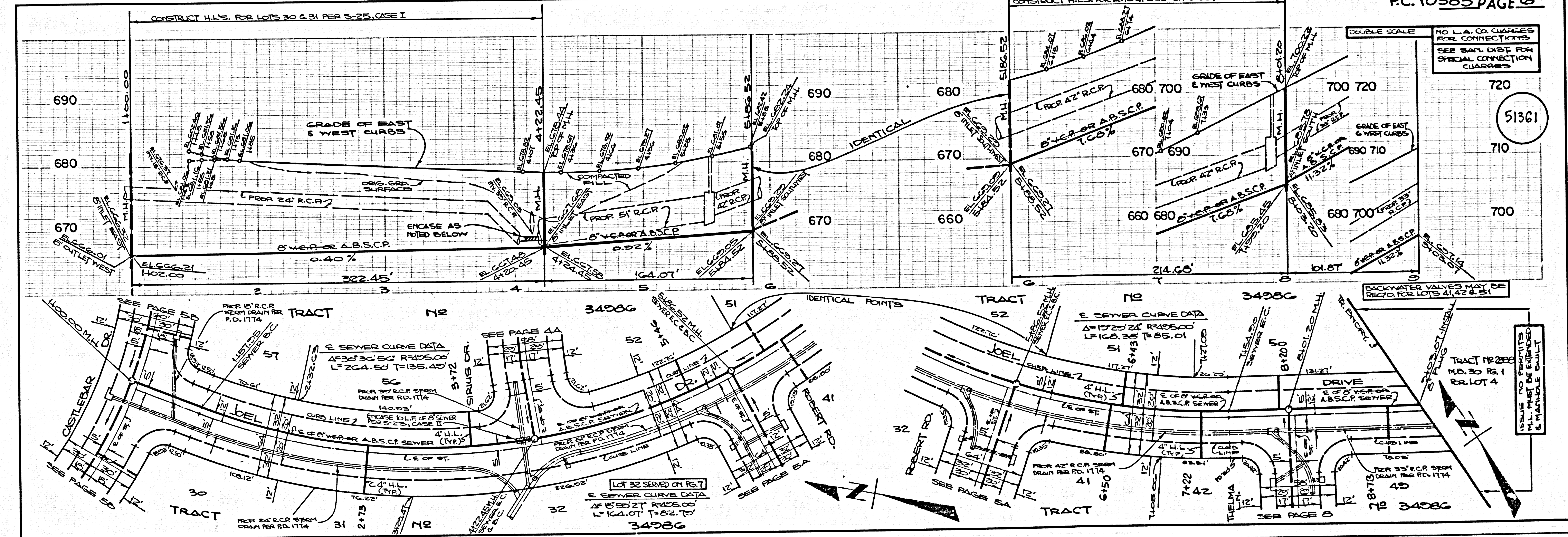
51359



(M)



51360

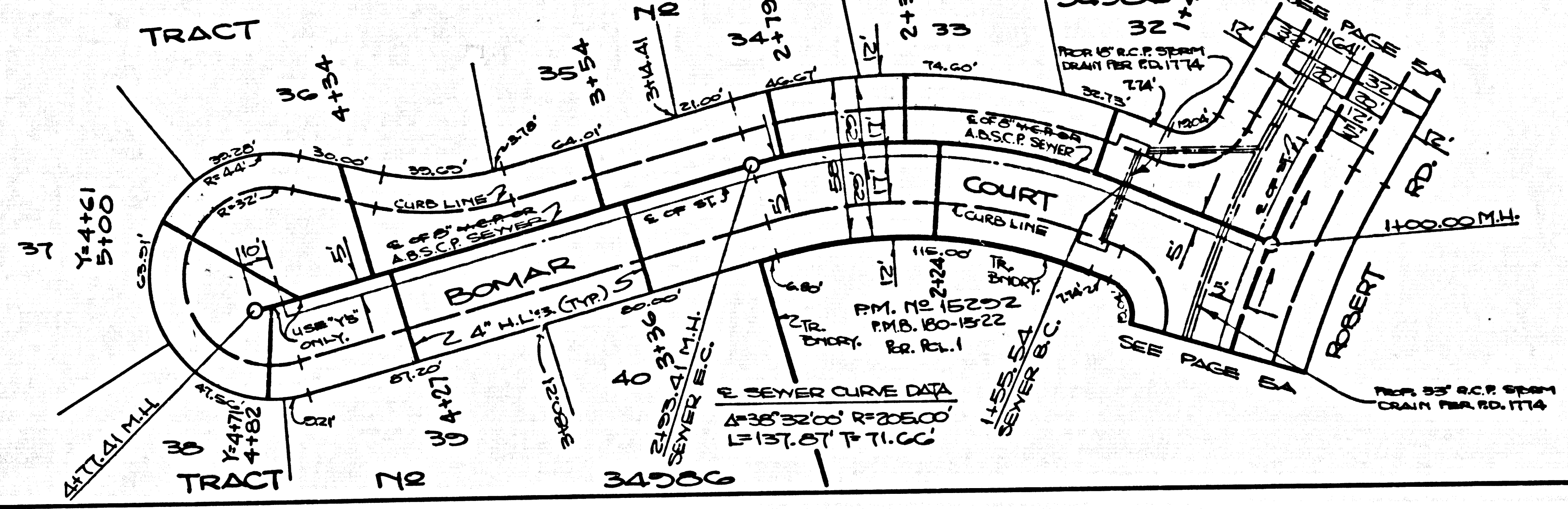
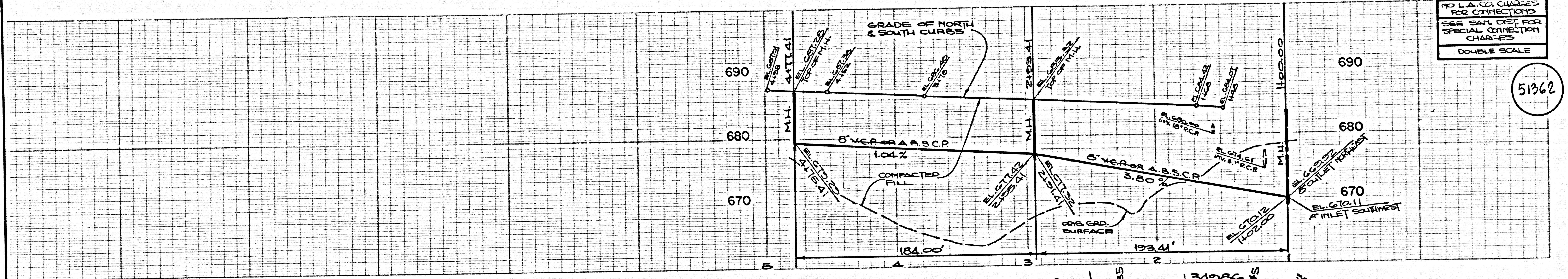


51361



NO L.A. CHARGES FOR CONNECTIONS  
SEE SAN. DIST. FOR SPECIAL CONNECTION CHARGES  
DOUBLE SCALE

51362



NO L.A. CHARGES FOR CONNECTIONS  
SEE SAN. DIST. FOR SPECIAL CONNECTION CHARGES  
DOUBLE SCALE

51363

