

B.M. BY 7525 ELEV. 1222.918
 P.D.M. TAG IN W. COR. RT. 3 COR.
 8' 4" W. OF MULLHOLLAND HWY. AND
 BDDINGHAM AVE. 75 FT. 5.4' TO PT. W. & INT.
 MALIBU QUAD. 19 12

GENERAL NOTES: (CONTINUED)
 16. ALL REFERENCE ON THIS PLAN TO THE COUNTY ENGINEER, THE ROAD
 DEPT. OR THE FLOOD CONTROL DISTRICT SHALL APPLY TO THOSE
 APPROPRIATE SECTIONS OF THE DEPARTMENT OF PUBLIC WORKS.

GENERAL NOTES:
 1. ELEVATIONS ARE IN FEET ABOVE U.S.C. & G.S. SEA LEVEL DATUM OF 1929.
 2. NO REVISIONS SHALL BE MADE IN THESE PLANS WITHOUT THE APPROVAL OF THE DEPT. OF PUBLIC WORKS.
 3. NO REPRESENTATIVE OF THE DEPT. OF PUBLIC WORKS WILL SURVEY OR AT OUT ANY PORTION OF THE WORK.
 4. GRADES TO WHICH THIS IMPROVEMENT IS TO BE CONSTRUCTED ARE SHOWN ON PLANS AND PROFILES. GRADE POINTS FOR TOP OF CURBS, CENTER LINE OF STREETS, OR CENTER LINE OF ALLEYS ARE SHOWN BY CIRCLES ON PROFILES. AT ALL POINTS BETWEEN DESIGNATED POINTS THE GRADE SHALL BE ESTABLISHED SO AS TO CONFORM TO A STRAIGHT LINE DRAWN BETWEEN SAID DESIGNATED POINTS.
 5. THE PRIVATE ENGINEER SHALL FURNISH THE SPOT PUBLIC WORKS WITH GRADE SHEETS AND STATIONING FOR ALL HOUSE LATERALS AND "T" OR "Y" BRANCHES AND SHALL PROVIDE STAKES FOR THEM AT THEIR PROPER LOCATIONS WITH STATIONING PLAINLY MARKED. ALL HOUSE LATERALS SHALL BE CONSTRUCTED IN A STRAIGHT ALIGNMENT AT RIGHT ANGLES FROM THE MAIN LINE SEWER EXCEPT AS SHOWN ON THE PLANS. HOUSE LATERALS FROM CHIMNEYS SHALL NOT HAVE AN ANGLE OF LESS THAN 45° WITH THE MAIN LINE SEWER. ANY CHANGE IN ALIGNMENT SHALL BE REQUESTED IN WRITING BY THE PRIVATE ENGINEER.
 6. THE PRIVATE ENGINEER SHALL FURNISH THE HOUSE LATERAL DEPTH AT THE PROPERTY LINE BELOW THE TOP OF CURB ELEVATION FOR EACH HOUSE LATERAL ON THE GRADE SHEET.
 7. BEFORE WORK CAN BE STARTED, THE CONTRACTOR MUST OBTAIN A PERMIT TO EXCAVATE IN COUNTY STREETS FROM THE L.A. COUNTY ROAD DEPT., DISTRICT OFFICE NO. 3, AND PAY A FEE TO THE COUNTY ENGINEER, 500 E. VERMONT AVENUE, LOS ANGELES, CALIF. 90005, TO COVER THE COST OF CONSTRUCTION INSPECTION AND RECORD PLANS.
 8. IF WORK IS TO BE DONE IN A STATE HIGHWAY, A PERMIT MUST BE OBTAINED FROM THE STATE OF CALIFORNIA, DIVISION OF HIGHWAYS, 120 SOUTH SPRING STREET, LOS ANGELES, CALIFORNIA.
 9. APPROVAL OF THIS PLAN BY THE COUNTY OF LOS ANGELES DOES NOT CONSTITUTE A REPRESENTATION AS TO THE ACCURACY OF THE LOCATION OF OR THE EXISTENCE OR NON-EXISTENCE OF ANY UNDERGROUND UTILITY PIPE, OR STRUCTURE WITHIN THE LIMITS OF THIS PROJECT. THIS NOTE APPLIES TO ALL PAGES.
 10. REFER TO SECTION 7.16.41 OF THE STANDARD SPECIFICATIONS REGARDING SAFETY ORDERS.
 11. PRIOR TO THE ISSUANCE OF THE REQUIRED SEWER CONSTRUCTION PERMIT, THE CONTRACTOR SHALL OBTAIN AND FILE WITH THE CITY ENGINEER A PERMIT TO EXCAVATE IN COUNTY STREETS FROM THE LOS ANGELES COUNTY ROAD DEPARTMENT. A PERMIT FOR EXCAVATIONS AND TRENCHES FROM THE STATE OF CALIFORNIA, DIVISION OF INDUSTRIAL SAFETY AND A CERTIFICATE OF WORKERS COMPENSATION INSURANCE WITH THE DEPARTMENT OF PUBLIC WORKS, 540 SOUTH VERMONT, 90005, LOS ANGELES, CALIFORNIA, MUST BE OBTAINED AND FILED WITH THE COUNTY ENGINEER 30 DAYS PRIOR TO CANCELLATION OF POLICY.

PROFILE, ALIGNMENT AND GRADE OF PAGE 1
SANITARY SEWERS
 TO BE CONSTRUCTED IN

TRACT NO. 40932
 PRIVATE CONTRACT NO. 10395
 C-237, C-1

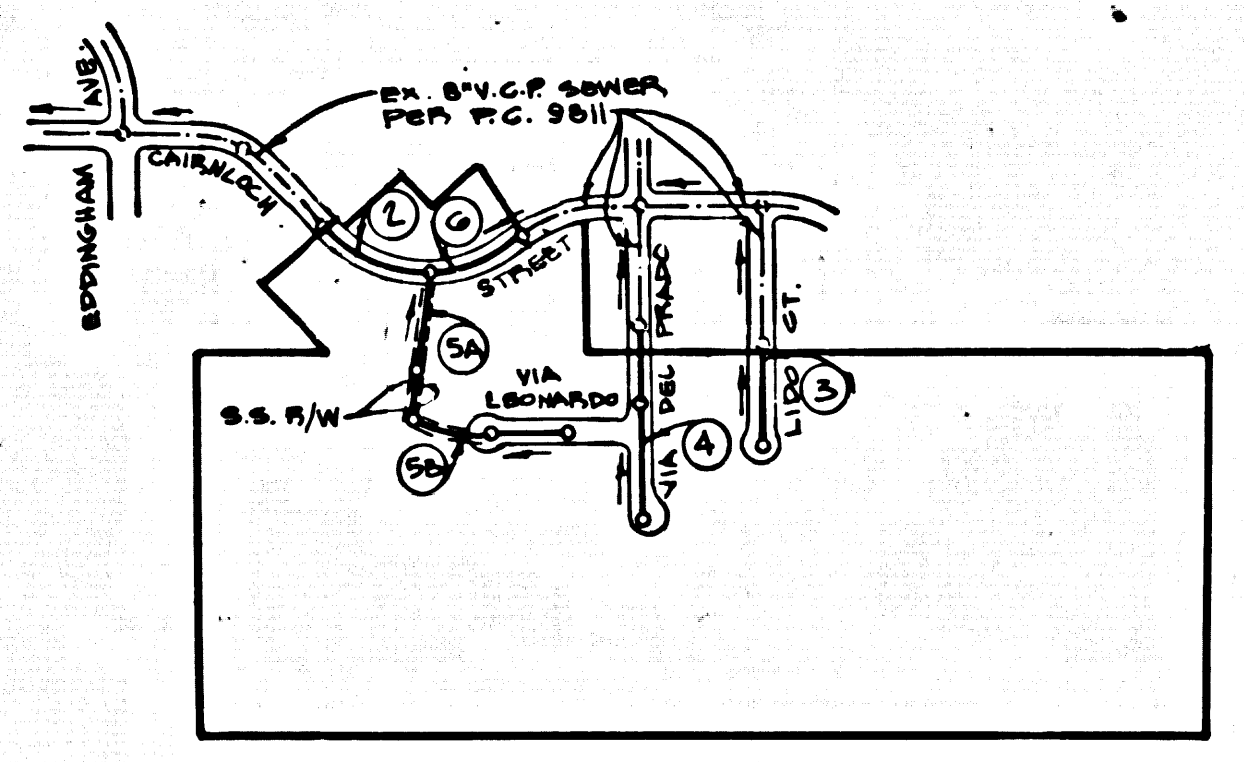
W.S. GO
 3 SHEETS, 9 PAGES
 SCALE: VERT. 1" = 8'
 HORIZ. 1" = 40'
 JULY, 1985
 PREPARED IN THE OFFICES OF
LANGO ENGINEERING
 17490 S. PARRISH AVE. TORRANCE, CALIF. 90504
 BY: *C. M. Leonard*
 REG. C. E. NO. 12167

51842

THE FOLLOWING LATEST REVISED STANDARD PLANS ON FILE IN THE OFFICE OF THE COUNTY ENGINEER SHALL APPLY IN THE CONSTRUCTION OF THIS PROJECT.

1. MINIMUM 1" DIA. SAFETY REQUIREMENTS	5-2
2. BRICK MANHOLE	5-3
3. STANDARD MANHOLE STEP	5-7
4. BORING FOR SEWER PIPE	5-21
5. CALLING AND ENCASMENT	5-22
6. WYE OR TEE SUPPORT	5-23
7. ALLOWABLE TRENCH WIDTH	5-24
8. LOCKING MANHOLE FRAME AND COVER	5-25
9. NON-SHOCKING PRECAST CONCRETE MANHOLE	5-26
10. ANCHOR BLOCKS	5-28

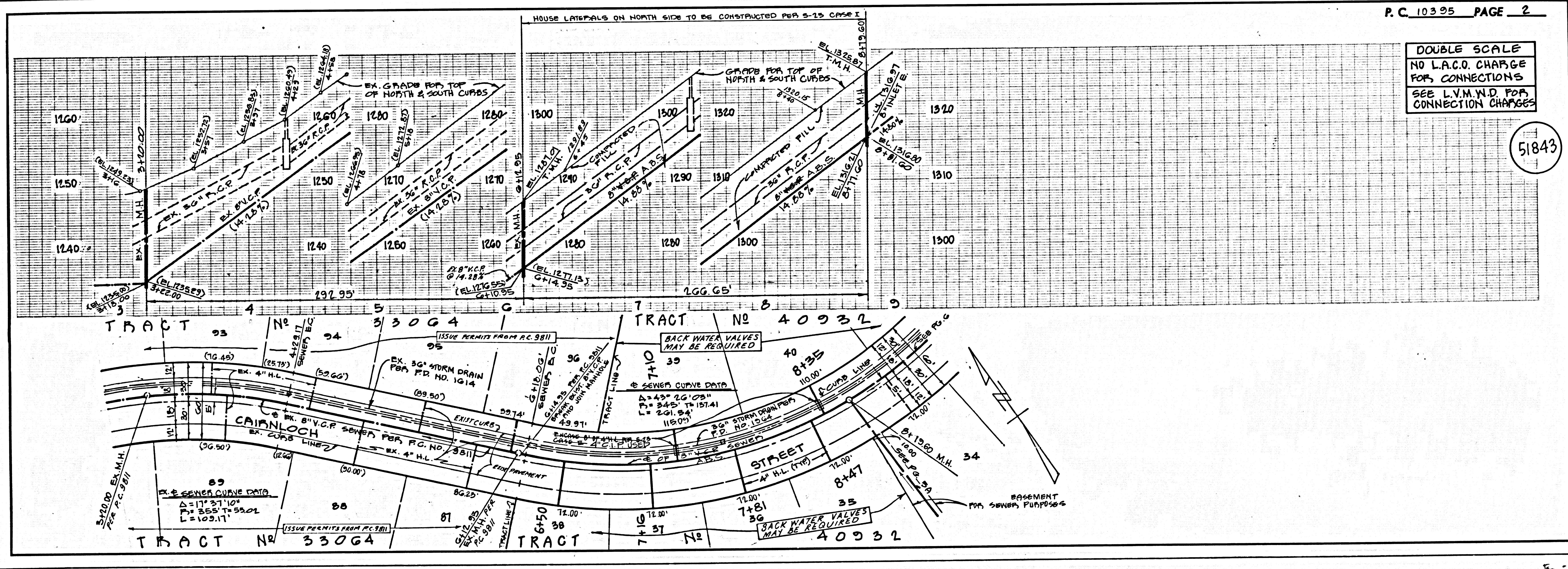
COUNTY OF LOS ANGELES, CALIFORNIA
 THOMAS A. TIDEWATER, DIRECTOR OF PUBLIC WORKS
 WILL STOKES, CHIEF ENGINEER
 LOS ANGELES MUNICIPAL WATER DISTRICT
 APPROVED: *Thomas A. Tidewater* DATE: *11/20/85*
 APPROVED: *Will Stokes* DATE: *11/20/85*
 CHECKED: *Richard J. Hall* DATE: *11/20/85*
 REG. C. E. NO. 32149
 CALABASAS BLDG. DIST. 91



INDEX MAP
 TRACT NO. 40932
 SCALE: 1" = 600'
 P.C. 10395

DOUBLE VERTICAL SCALE

LOT NO. 12 IS NON BUILDABLE LOT AND WILL NOT BE SERVED BY THIS SEWER.



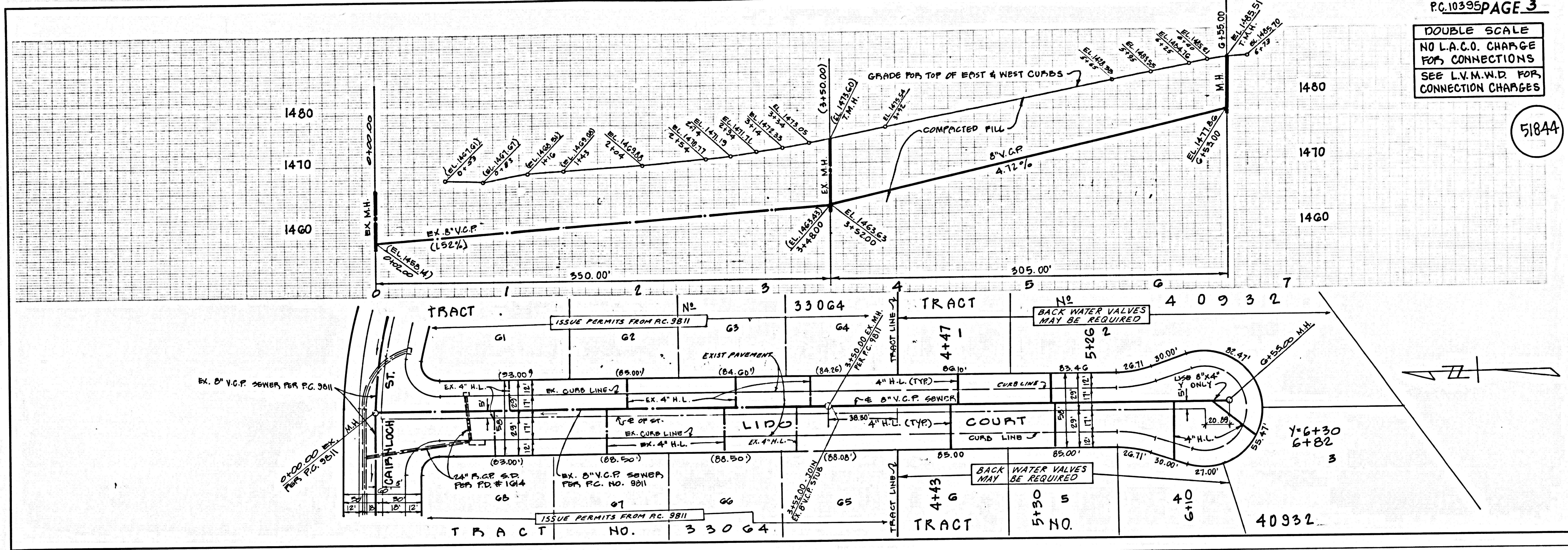
DOUBLE SCALE
 NO L.A.C.O. CHARGE
 FOR CONNECTIONS
 SEE L.V.M.N.D. FOR
 CONNECTION CHARGES

51843

TRACT NO. 40932

DOUBLE SCALE
NO L.A.C.O. CHARGE
FOR CONNECTIONS
SEE L.V.M.W.D. FOR
CONNECTION CHARGES

51844



5

TRACT NO 40932

DOUBLE SCALE
NO L.A.C.O. CHARGE
FOR CONNECTIONS
SEE L.V.M.W.D. FOR
CONNECTION CHARGES

51845

