

B.M. C.O. 1820 ELEV. 872.336
 BT. SPK. IN CONC. HDWL. 15 FT. N. C/L BREA
 CANYON CUT-OFF RD. - 0.85 MI. N. BREA
 CANYON RD. 550 FT. FROM SURVEIL. P.O. (GM 9)

DIETERHEIM QUAD. 19⁵

PRIVATE ENGINEER'S NOTICE TO CONTRACTORS

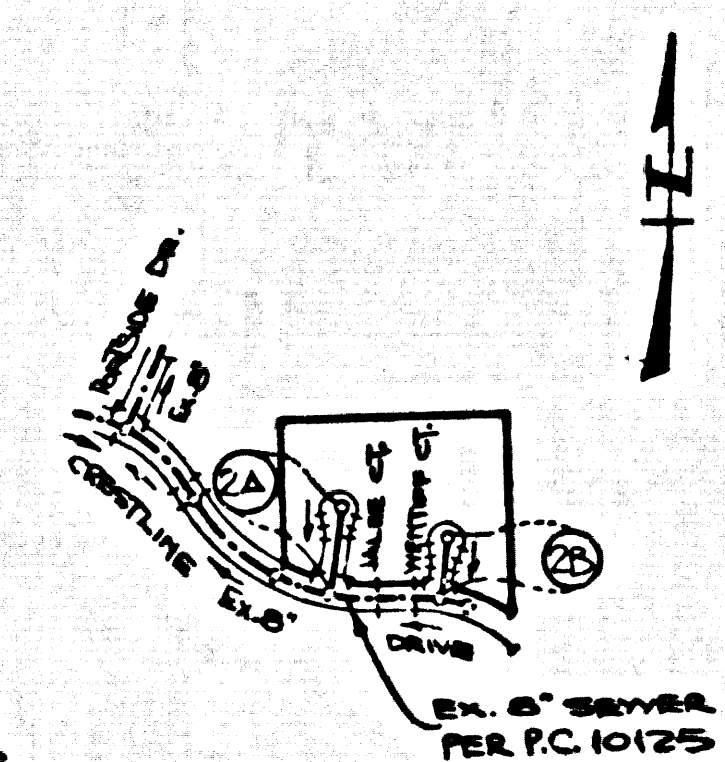
The existence and location of any underground utility pipes or structures shown on these plans are obtained by a search of the available records. To the best of our knowledge there are no existing utilities except as shown on these plans. The contractor is required to take due precautionary measures to protect the utility lines shown and any other lines not of record or not shown on these plans. The contractor shall be responsible for notifying "UNDERGROUND SERVICE ALERT" at 1-800-422-4133 two working days prior to any excavation or construction.

J.P.S.
 Registered Engineer R.C.E. No. 19233

CONSTRUCTION NOTES CONT'D.

- FULL COMPLIANCE WITH PART IV OF THE SPECIAL PROVISIONS IS REQUIRED FOR THE INSTALLATION OF A.B.S. COMPOSITE PIPE.
- MANHOLE WATER STOP GASKETS AND CLAMPS ARE REQUIRED FOR THE CONNECTION OF A.B.S. COMPOSITE PIPE TO MANHOLE STRUCTURES.
- A.B.S. SOLID WALL PIPE MUST BE USED FOR VTE AND HOUSE LATERAL CONNECTIONS TO A.B.S. COMPOSITE MAINLINE SEWER PIPE.
- A.B.S. COMPOSITE PIPE SHALL BE BEDDED IN CONFORMANCE WITH THE TABLE IN SECTION 3-3-1 OF PART IV OF THE SPECIAL PROVISIONS.
- THREE DEGREE DEFLECTION COMPLERS ARE REQUIRED FOR RADIUS OF CURVATURE LESS THAN 300 FEET WHEN USING 8" A.B.S. COMPOSITE PIPE.
- NO CONNECTIONS FOR DISPOSAL OF INDUSTRIAL WASTE IS ALLOWED IF A.B.S. COMPOSITE PIPE IS USED.
- SEWER LINE CURVATURE SHALL NOT BE ACHIEVED BY PULLING OF JOINTS ON BEVELING PIPE ENDS WHEN USING PLASTIC PIPE INCLUDING A.B.S. COMPOSITE PIPE.
- ALL VTE AND/OR HOUSE LATERALS ARE TO BE LOCATED AT LEAST FIVE FEET APART AND WHEN POSSIBLE NOT CLOSER THAN FIVE FEET TO ANY MANHOLE.
- A.B.S. SOLID WALL PIPE IS NOT ACCEPTABLE FOR USE AS MAINLINE SEWER.
- ONLY VTE BRANCHES ARE TO BE USED FOR CONNECTION TO A.B.S. COMPOSITE MAINLINE SEWER PIPE.

NOTE: NUMBERS IN CIRCLES INDICATE PAGE NUMBERS



INDEX MAP
 TRACT NO. 44301
 P.C. NO. 10405
 SCALE: 1"=800'

NO CONNECTION FOR THE DISPOSAL OF INDUSTRIAL WASTE SHALL BE MADE TO SEWERS SHOWN ON THESE DRAWINGS UNTIL A PERMIT FOR INDUSTRIAL WASTEWATER DISCHARGE HAS BEEN ISSUED BY THE SANITATION DISTRICTS FOR SAID CONNECTION.

BEFORE BREAKING INTO OR CONSTRUCTION ON A COUNTY SANITATION DISTRICT SEWER AND PRIOR TO FINAL ACCEPTANCE OF THE PROJECT, SANITATION DISTRICT INSPECTOR SHALL BE NOTIFIED BY PHONE 818 - 962-8605 SO THAT REQUIRED INSPECTION CAN BE MADE.

NOTE: ISSUE NO HOUSE CONNECTION PERMITS UNTIL P.C. 10125 IS ACCEPTED.

GENERAL NOTES:

- ELEVATIONS ARE IN FEET ABOVE U.S.C. & G.S. SEA LEVEL DATUM OF 1988.
- NO REVISIONS SHALL BE MADE IN THESE PLANS WITHOUT THE APPROVAL OF THE DEPT. OF PUBLIC WORKS.
- NO REPRESENTATIVE OF THE DEPT. OF PUBLIC WORKS WILL SURVEY OR LAY OUT ANY PORTION OF THE WORK.
- GRADES TO WHICH THIS IMPROVEMENT IS TO BE CONSTRUCTED ARE SHOWN ON PLANS AND PROFILES. GRADE POINTS FOR TOP OF CURBS, CENTER LINE OF STREETS, OR CENTER LINE OF ALLEYS ARE SHOWN BY CIRCLES ON PROFILES. AT ALL POINTS BETWEEN DESIGNATED POINTS THE GRADE SHALL BE ESTABLISHED SO AS TO CONFORM TO A STRAIGHT LINE DRAWN BETWEEN SAID DESIGNATED POINTS.
- THE PRIVATE ENGINEER SHALL FURNISH THE DEPT. OF PUBLIC WORKS WITH STATIONING FOR ALL HOUSE LATERALS AND "T" OR "Y" BRANCHES AND SHALL PROVIDE THE DEPT. OF PUBLIC WORKS WITH THEIR PROPER LOCATIONS WITH STATIONING PLACED 1/4" FROM THE HOUSE LATERALS SHALL BE CONSTRUCTED IN A STRAIGHT ALIGNMENT AT RIGHT ANGLES FROM THE MAIN LINE SEWER EXCEPT AS SHOWN ON THE PLANS. HOUSE LATERALS FROM CONCRETE SHALL NOT HAVE AN ANGLE OF LESS THAN 45° WITH THE MAIN LINE UNLESS ANY CHANGE IN ALIGNMENT SHALL BE REQUESTED IN WRITING BY THE PRIVATE ENGINEER.
- THE PRIVATE ENGINEER SHALL FURNISH THE HOUSE LATERAL DEPTH AT THE PROPERTY LINE BELOW THE TOP OF CURB ELEVATION FOR EACH HOUSE LATERAL ON THE GRADE SHEET.
- BEFORE WORK CAN BE STARTED, THE CONTRACTOR MUST OBTAIN A PERMIT TO EXCAVATE IN COUNTY STREETS FROM THE ROAD ELEMENT OF THE L.A. DEPT. OF PUBLIC WORKS, DIST. OFFICE NO. 1, AND PAY A FEE TO THE DIRECTOR OF PUBLIC WORKS, 550 S. VERMONT AVE., L.A., CA 90005, TO COVER THE COST OF CONSTRUCTION INSPECTION & RECORD PLANS.
- IF WORK IS TO BE DONE IN A STATE HIGHWAY RIGHT-OF-WAY, PERMITS MUST BE OBTAINED FROM THE STATE OF CALIFORNIA, DIVISION OF HIGHWAYS, 120 SOUTH SPRING STREET, LOS ANGELES, CALIFORNIA.
- APPROVAL OF THIS PLAN BY THE COUNTY OF LOS ANGELES DOES NOT CONSTITUTE A REPRESENTATION AS TO THE ACCURACY OF THE LOCATION OF OR THE EXISTENCE OR NON-EXISTENCE OF ANY UNDERGROUND UTILITY PIPE, OR STRUCTURE WITHIN THE LIMITS OF THE PROJECT. THE CONTRACTOR SHALL BE RESPONSIBLE FOR OBTAINING ALL NECESSARY PERMITS AND APPROVALS.
- REFER TO SECTION 7.04.1 OF THE STANDARD SPECIFICATIONS REGARDING SAFETY ORDERS.
- PRIOR TO THE ISSUANCE OF THE REQUIRED SEWER CONSTRUCTION PERMIT, THE CONTRACTOR SHALL OBTAIN AND FILE WITH THE DEPT. OF PUBLIC WORKS COPIES OF A PERMIT TO EXCAVATE IN COUNTY STREETS FROM THE L.A. COUNTY ROAD ELEMENT AT THE DEPT. OF PUBLIC WORKS, DIST. OFFICE NO. 1, AND PAY A FEE TO THE DIRECTOR OF PUBLIC WORKS, 550 S. VERMONT AVE., L.A., CA 90005, TO COVER THE COST OF CONSTRUCTION INSPECTION & RECORD PLANS.
- WORKERS COMPENSATION INSURANCE WITH THE DEPARTMENT OF PUBLIC WORKS, 550 SOUTH VERMONT, RM 810, LOS ANGELES, CALIFORNIA 90005, NAMED AS THE CERTIFICATE HOLDER TO BE NOTIFIED 30 DAYS PRIOR TO CANCELLATION OF POLICY.

CONSTRUCTION NOTES:

- WORK SHALL BE CONSTRUCTED ACCORDING TO THE STANDARD SPECIFICATIONS FOR PUBLIC WORKS CONSTRUCTION 1989 (SPECIAL PROVISIONS) SUPPLEMENTED BY THE DEPT. OF PUBLIC WORKS SPECIAL PROVISIONS FOR THE CONSTRUCTION OF SANITARY SEWERS DATED 10/1/86, 10/1/86, AND SHALL BE PROSECUTED ONLY IN THE PRESENCE OF THE DEPT. OF PUBLIC WORKS.
- THE CONTRACTOR SHALL NOTIFY THE CONSTRUCTION DIV. - PUBLIC WORKS DEPT., TEL. (213) 226-8281 AT LEAST 24 HOURS BEFORE STARTING ANY WORK UNDER THIS CONTRACT.
- HOUSE LATERALS TO BE CONSTRUCTED WITH INVERTS AT PROPERTY LINE 8 FEET BELOW CURB GRADE EXCEPT AS NOTED.
- VTE OR TEE BRANCHES MAY BE USED FOR CONNECTIONS TO MAINLINE SEWERS EXCEPT AS NOTED.
- ALL VTE OR TEE BRANCHES SHALL BE CONSTRUCTED TO MAINLINE SEWERS PER S-3 OR PRECAST CONCRETE MANHOLES PER S-3 EXCEPT AS NOTED.
- ALL STRUCTURES SHALL BE EITHER BRICK MANHOLES PER S-3 OR PRECAST CONCRETE MANHOLES PER S-3 EXCEPT AS NOTED.
- PROVIDE STAKES ON THE PROPERTY LINE OR PROPERTY LINES PRODUCED AT RIGHT ANGLES TO THE SEWER LINE AT THE CENTER LINE OF EACH MANHOLE.
- MANHOLE TOPS IN UNIMPROVED RIGHTS OF WAY TO BE SIX INCHES ABOVE FINISHED GRADE.
- WITHELD CLAY PIPE JOINTS SHALL BE TYPE "D" OR "B" PER STANDARD SPECIFICATIONS SECTION 303-2.
- A POWER POLE IS WITHIN THREE FEET OF THE SEWER. THE SEWER SHALL BE ENCASED PER S-28, CASE A, TWO FEET ON EACH SIDE FROM THE POINT OF INTERFERENCE.
- IF DURING THE COURSE OF CONSTRUCTION IT IS DETERMINED THAT THERE IS LESS THAN FOUR FEET OF COVER OVER THE TOP OF A MAIN LINE OR HOUSE LATERAL SEWER WHICH IS NOT INDICATED ON THE PLANS, THE PIPE SHALL BE ENCASED PER S-28, CASE B UNLESS OTHERWISE APPROVED BY THE DIRECTOR OF PUBLIC WORKS.
- ALL JOINTS BETWEEN CAST IRON PIPE AND WITHELD CLAY PIPE SHALL BE MADE WITH A RUBBER BLEND JOINT, TYPE "T" OR "D".
- IF BY REASON OF NECESSARY PERMITS TO EXCAVATE IN COUNTY STREETS FROM THE L.A. COUNTY ROAD ELEMENT AT THE DEPT. OF PUBLIC WORKS, DIST. OFFICE NO. 1, AND PAY A FEE TO THE DIRECTOR OF PUBLIC WORKS, 550 S. VERMONT AVE., L.A., CA 90005, TO COVER THE COST OF CONSTRUCTION INSPECTION & RECORD PLANS.
- RESURFACE ALL TRENCHES WITHIN PAVED AREAS TO MEET LA COUNTY PUBLIC WORKS OR CALIF. STATE HIGHWAY REQUIREMENTS IN ACCORDANCE WITH PERMITS.
- FULL COMPLIANCE WITH SECTION 303-1.5.5 OF THE SPECIAL PROVISIONS WILL BE REQUIRED FOR BACKFILL IN STREETS. CERTIFICATION OF BACKFILL COMPACTION AND SAND EQUIVALENTS BY A QUALIFIED, REGISTERED TESTING LABORATORY SHALL BE PROVIDED BY THE PERMITTEE PRIOR TO THE ISSUANCE OF A CERTIFICATE OF PARTIAL ACCEPTANCE.
- SPECIAL BACKFILL IN EASEMENT CONSTRUCTION (A) BACKFILL TRENCH AND REPLACE OTHER EARTH SO AS TO ACHIEVE THE NATURAL OR FINISHED GRADES AND SLOPES SHOWN ON THE GRADING PLAN APPROVED FOR THIS DEVELOPMENT BY THE BUILDING AND SAFETY DIVISION (B) ALL BACKFILL AND EARTH REPLACED SHALL BE COMPACTED TO A MINIMUM OF 90% OF MAXIMUM DENSITY AND SAFETY DIVISION (C) ALL BACKFILL AND EARTH REPLACED SHALL BE COMPACTED TO A MINIMUM OF 90% OF MAXIMUM DENSITY PER A.S.T.M. STD. METHOD OF TEST D958T AS MODIFIED. ACCEPTABLE CERTIFICATION OF SUCH COMPACTION SHALL BE SUBMITTED TO THE CONSTRUCTION DIV. - PUBLIC WORKS DEPT.

DOUBLE SCALE

PROFILE, ALIGNMENT AND GRADE OF
SANITARY SEWERS
 TO BE CONSTRUCTED IN
TRACT NO. 44301
 PRIVATE CONTRACT NO. 10405

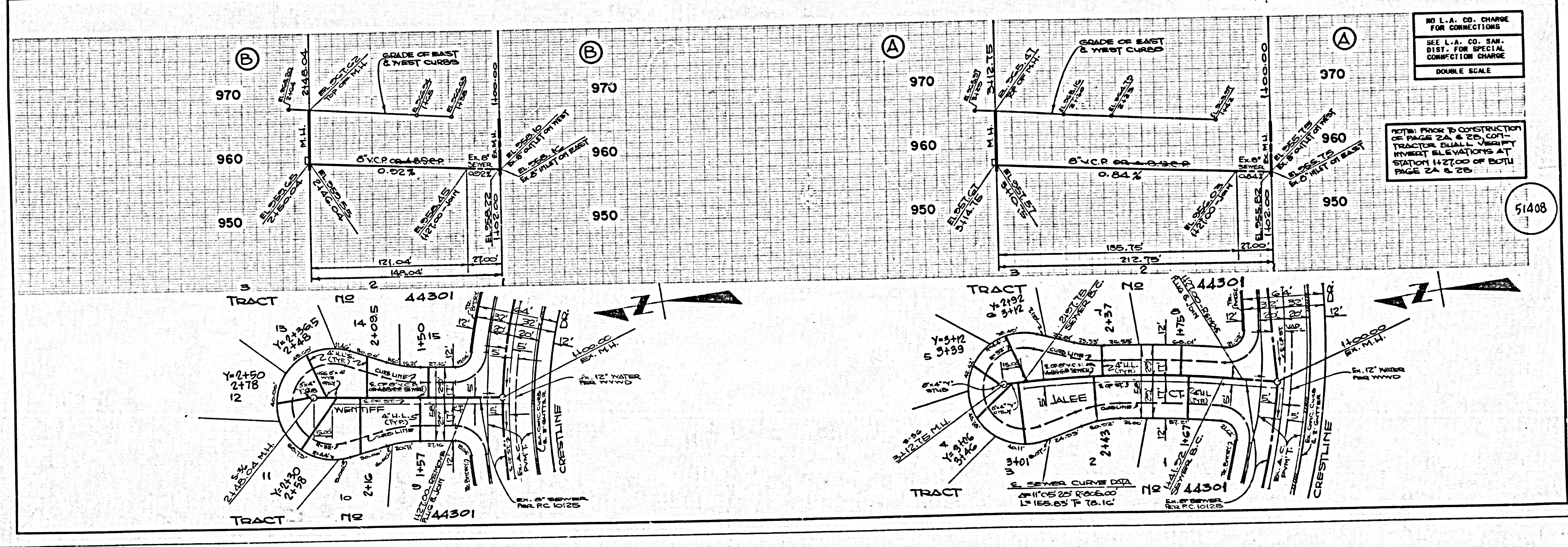
U138-H5
 1 SHEET, 2 PAGES
 SCALE: VERT. 1"=5' HORIZ. 1"=100'
 PREPARED IN THE OFFICES OF
LINDA RITZER, INC.
 3084 HUNTINGTON DRIVE
 SAN MARINO, CA 91078
 BY: *J.P.S.*
 REG. C.E. No. 19233
 JOHN M. BARBACCINO

THE FOLLOWING LATEST REVISED STANDARD PLANS ON FILE IN THE OFFICE OF THE DEPARTMENT OF PUBLIC WORKS SHALL APPLY IN THE CONSTRUCTION OF THIS PROJECT:

SEWER	S-1
SEWER MANHOLE	S-2
SEWER MANHOLE WITH	S-3
SEWER MANHOLE WITH	S-4
SEWER MANHOLE WITH	S-5
SEWER MANHOLE WITH	S-6
SEWER MANHOLE WITH	S-7
SEWER MANHOLE WITH	S-8
SEWER MANHOLE WITH	S-9
SEWER MANHOLE WITH	S-10
SEWER MANHOLE WITH	S-11
SEWER MANHOLE WITH	S-12
SEWER MANHOLE WITH	S-13
SEWER MANHOLE WITH	S-14
SEWER MANHOLE WITH	S-15
SEWER MANHOLE WITH	S-16
SEWER MANHOLE WITH	S-17
SEWER MANHOLE WITH	S-18
SEWER MANHOLE WITH	S-19
SEWER MANHOLE WITH	S-20
SEWER MANHOLE WITH	S-21
SEWER MANHOLE WITH	S-22
SEWER MANHOLE WITH	S-23
SEWER MANHOLE WITH	S-24
SEWER MANHOLE WITH	S-25
SEWER MANHOLE WITH	S-26
SEWER MANHOLE WITH	S-27
SEWER MANHOLE WITH	S-28
SEWER MANHOLE WITH	S-29
SEWER MANHOLE WITH	S-30
SEWER MANHOLE WITH	S-31
SEWER MANHOLE WITH	S-32
SEWER MANHOLE WITH	S-33
SEWER MANHOLE WITH	S-34
SEWER MANHOLE WITH	S-35
SEWER MANHOLE WITH	S-36
SEWER MANHOLE WITH	S-37
SEWER MANHOLE WITH	S-38
SEWER MANHOLE WITH	S-39
SEWER MANHOLE WITH	S-40
SEWER MANHOLE WITH	S-41
SEWER MANHOLE WITH	S-42
SEWER MANHOLE WITH	S-43
SEWER MANHOLE WITH	S-44
SEWER MANHOLE WITH	S-45
SEWER MANHOLE WITH	S-46
SEWER MANHOLE WITH	S-47
SEWER MANHOLE WITH	S-48
SEWER MANHOLE WITH	S-49
SEWER MANHOLE WITH	S-50
SEWER MANHOLE WITH	S-51
SEWER MANHOLE WITH	S-52
SEWER MANHOLE WITH	S-53
SEWER MANHOLE WITH	S-54
SEWER MANHOLE WITH	S-55
SEWER MANHOLE WITH	S-56
SEWER MANHOLE WITH	S-57
SEWER MANHOLE WITH	S-58
SEWER MANHOLE WITH	S-59
SEWER MANHOLE WITH	S-60
SEWER MANHOLE WITH	S-61
SEWER MANHOLE WITH	S-62
SEWER MANHOLE WITH	S-63
SEWER MANHOLE WITH	S-64
SEWER MANHOLE WITH	S-65
SEWER MANHOLE WITH	S-66
SEWER MANHOLE WITH	S-67
SEWER MANHOLE WITH	S-68
SEWER MANHOLE WITH	S-69
SEWER MANHOLE WITH	S-70
SEWER MANHOLE WITH	S-71
SEWER MANHOLE WITH	S-72
SEWER MANHOLE WITH	S-73
SEWER MANHOLE WITH	S-74
SEWER MANHOLE WITH	S-75
SEWER MANHOLE WITH	S-76
SEWER MANHOLE WITH	S-77
SEWER MANHOLE WITH	S-78
SEWER MANHOLE WITH	S-79
SEWER MANHOLE WITH	S-80
SEWER MANHOLE WITH	S-81
SEWER MANHOLE WITH	S-82
SEWER MANHOLE WITH	S-83
SEWER MANHOLE WITH	S-84
SEWER MANHOLE WITH	S-85
SEWER MANHOLE WITH	S-86
SEWER MANHOLE WITH	S-87
SEWER MANHOLE WITH	S-88
SEWER MANHOLE WITH	S-89
SEWER MANHOLE WITH	S-90
SEWER MANHOLE WITH	S-91
SEWER MANHOLE WITH	S-92
SEWER MANHOLE WITH	S-93
SEWER MANHOLE WITH	S-94
SEWER MANHOLE WITH	S-95
SEWER MANHOLE WITH	S-96
SEWER MANHOLE WITH	S-97
SEWER MANHOLE WITH	S-98
SEWER MANHOLE WITH	S-99
SEWER MANHOLE WITH	S-100

COUNTY OF LOS ANGELES, CALIFORNIA
 THOMAS A. TIDENARSON, DIRECTOR. CHARLES W. GARRY, CHIEF ENGINEER
 DEPARTMENT OF PUBLIC WORKS
 APPROVED: *Carl A. Wilson* 4/16/86 APPROVED: *Charles W. Garry* 4/16/86
 DATE DATE
 CHECKED: *Fanny Salas* 4/16/86
 DATE
 REG. C.E. NO. 16847
 LA PUENTE INDG. DIST. 3.00

REVIEWED BY: *Suzette G. Ivaldi* P.C. 10405 PAGE 2
 DATE: 4/16/86



NO L.A. CO. CHARGE FOR CONNECTIONS
 SEE L.A. CO. SAN. DIST. FOR SPECIAL CONNECTION CHARGE
 DOUBLE SCALE

NOTE: PRIOR TO CONSTRUCTION OF PAGE 2A & 2B, COPY 1, TRACTOR SHALL LOCATE AND VERIFY EXISTING ELEVATIONS AT STATION 1+27.00 OF BOTH PAGE 2A & 2B.