

SANITARY SEWERS

TO BE CONSTRUCTED IN

TRACT NO. 35618
PRIVATE CONTRACT NO. 10410

INDEX: U-138-B-4#5

W.S. 58
2 SHEETS, 3 PAGES

51175

SCALE: HORIZ. 1"=40' VERT. 1"=4'

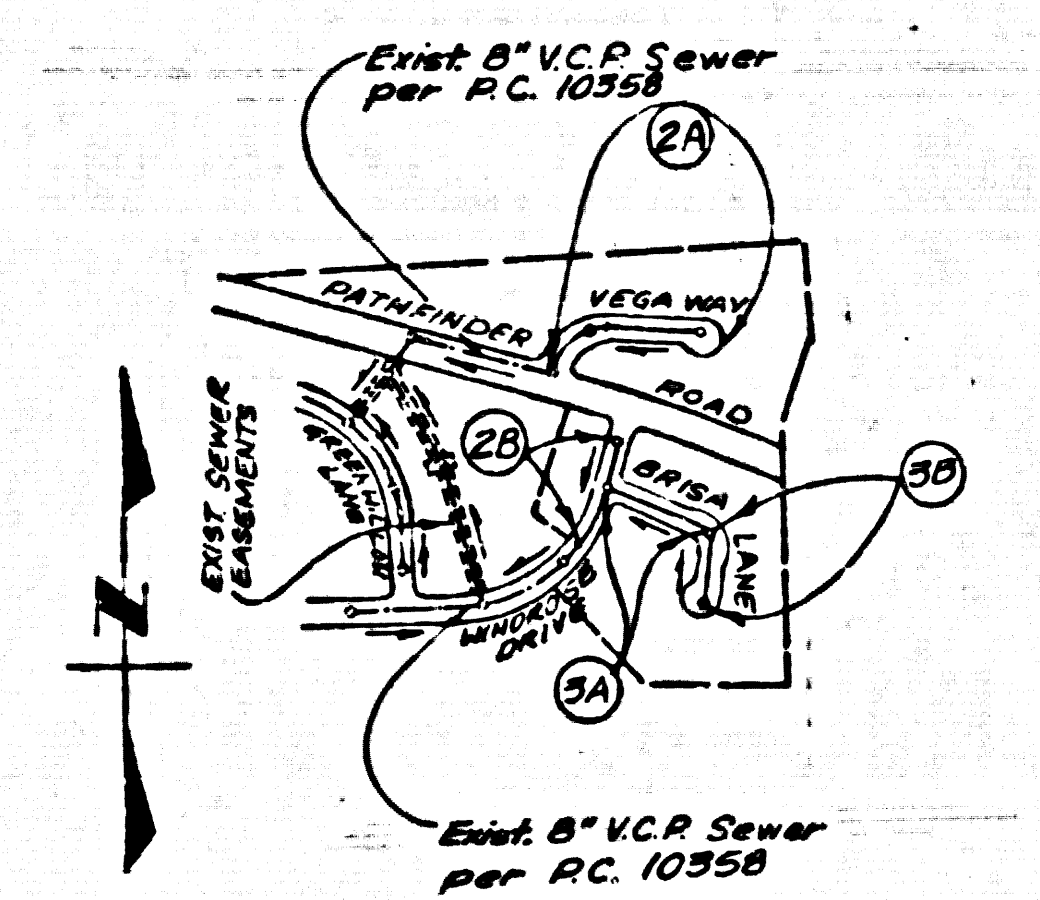
PREPARED IN THE OFFICES OF
PFEILER & ASSOCIATES ENGINEERS
15541 COMMONWEALTH AVE. FULLERTON, CALIFORNIA, 92633
BY: *John J. Pfeiler*
REG. C. E. No. 12507

THE FOLLOWING LATEST REVISED STANDARD PLANS ON FILE IN THE OFFICE OF THE COUNTY ENGINEER MAY BE APPLIED TO THE CONSTRUCTION OF THIS PROJECT:

UNIFORM PUBLIC SAFETY REQUIREMENTS	5-1
STANDARD MANHOLE SIZES	5-2
STANDARD MANHOLE SIZES	5-3
STANDARD MANHOLE SIZES	5-4
STANDARD MANHOLE SIZES	5-5
STANDARD MANHOLE SIZES	5-6
STANDARD MANHOLE SIZES	5-7
STANDARD MANHOLE SIZES	5-8
STANDARD MANHOLE SIZES	5-9
STANDARD MANHOLE SIZES	5-10
STANDARD MANHOLE SIZES	5-11
STANDARD MANHOLE SIZES	5-12
STANDARD MANHOLE SIZES	5-13
STANDARD MANHOLE SIZES	5-14
STANDARD MANHOLE SIZES	5-15
STANDARD MANHOLE SIZES	5-16
STANDARD MANHOLE SIZES	5-17
STANDARD MANHOLE SIZES	5-18
STANDARD MANHOLE SIZES	5-19
STANDARD MANHOLE SIZES	5-20
STANDARD MANHOLE SIZES	5-21
STANDARD MANHOLE SIZES	5-22
STANDARD MANHOLE SIZES	5-23
STANDARD MANHOLE SIZES	5-24
STANDARD MANHOLE SIZES	5-25
STANDARD MANHOLE SIZES	5-26
STANDARD MANHOLE SIZES	5-27
STANDARD MANHOLE SIZES	5-28
STANDARD MANHOLE SIZES	5-29
STANDARD MANHOLE SIZES	5-30
STANDARD MANHOLE SIZES	5-31
STANDARD MANHOLE SIZES	5-32
STANDARD MANHOLE SIZES	5-33
STANDARD MANHOLE SIZES	5-34
STANDARD MANHOLE SIZES	5-35
STANDARD MANHOLE SIZES	5-36
STANDARD MANHOLE SIZES	5-37
STANDARD MANHOLE SIZES	5-38
STANDARD MANHOLE SIZES	5-39
STANDARD MANHOLE SIZES	5-40
STANDARD MANHOLE SIZES	5-41
STANDARD MANHOLE SIZES	5-42
STANDARD MANHOLE SIZES	5-43
STANDARD MANHOLE SIZES	5-44
STANDARD MANHOLE SIZES	5-45
STANDARD MANHOLE SIZES	5-46
STANDARD MANHOLE SIZES	5-47
STANDARD MANHOLE SIZES	5-48
STANDARD MANHOLE SIZES	5-49
STANDARD MANHOLE SIZES	5-50
STANDARD MANHOLE SIZES	5-51
STANDARD MANHOLE SIZES	5-52
STANDARD MANHOLE SIZES	5-53
STANDARD MANHOLE SIZES	5-54
STANDARD MANHOLE SIZES	5-55
STANDARD MANHOLE SIZES	5-56
STANDARD MANHOLE SIZES	5-57
STANDARD MANHOLE SIZES	5-58
STANDARD MANHOLE SIZES	5-59
STANDARD MANHOLE SIZES	5-60
STANDARD MANHOLE SIZES	5-61
STANDARD MANHOLE SIZES	5-62
STANDARD MANHOLE SIZES	5-63
STANDARD MANHOLE SIZES	5-64
STANDARD MANHOLE SIZES	5-65
STANDARD MANHOLE SIZES	5-66
STANDARD MANHOLE SIZES	5-67
STANDARD MANHOLE SIZES	5-68
STANDARD MANHOLE SIZES	5-69
STANDARD MANHOLE SIZES	5-70
STANDARD MANHOLE SIZES	5-71
STANDARD MANHOLE SIZES	5-72
STANDARD MANHOLE SIZES	5-73
STANDARD MANHOLE SIZES	5-74
STANDARD MANHOLE SIZES	5-75
STANDARD MANHOLE SIZES	5-76
STANDARD MANHOLE SIZES	5-77
STANDARD MANHOLE SIZES	5-78
STANDARD MANHOLE SIZES	5-79
STANDARD MANHOLE SIZES	5-80
STANDARD MANHOLE SIZES	5-81
STANDARD MANHOLE SIZES	5-82
STANDARD MANHOLE SIZES	5-83
STANDARD MANHOLE SIZES	5-84
STANDARD MANHOLE SIZES	5-85
STANDARD MANHOLE SIZES	5-86
STANDARD MANHOLE SIZES	5-87
STANDARD MANHOLE SIZES	5-88
STANDARD MANHOLE SIZES	5-89
STANDARD MANHOLE SIZES	5-90
STANDARD MANHOLE SIZES	5-91
STANDARD MANHOLE SIZES	5-92
STANDARD MANHOLE SIZES	5-93
STANDARD MANHOLE SIZES	5-94
STANDARD MANHOLE SIZES	5-95
STANDARD MANHOLE SIZES	5-96
STANDARD MANHOLE SIZES	5-97
STANDARD MANHOLE SIZES	5-98
STANDARD MANHOLE SIZES	5-99
STANDARD MANHOLE SIZES	5-100

COUNTY OF LOS ANGELES, CALIFORNIA
 THOMAS A. TIDENHAGEN, DIRECTOR OF PUBLIC WORKS
 CHARLES W. CARRY, CHIEF ENGINEER
 CO. SAN. DIV. NO. 31
 APPROVED: *John J. Pfeiler* 11/21/85
 APPROVED: *John J. Pfeiler* 11/24/85
 OFFICE ENGINEER
 CHECKED: *John J. Pfeiler* 10-23-85
 REG. C. E. NO. 23134
 LA PUENTE BLDG. DIST. 2.00

B.M. CG 3918 ELEV. 694.931
 R.D.M. TAG IN C.B. 34 FT. EIO B.C.R.
 2 FT. 3 IN. 100 FT. EIO L. INT. DIAMOND
 BAR BLVD. & SUNSET CROSSING ROAD.
 OTTERBEIN QUAD. 19.80



INDEX MAP

P.C. 10410 TRACT NO. 35618
 SCALE: 1"=600'
 NOTE: NUMBERS IN CIRCLES INDICATE PAGE NUMBERS

DOUBLE SCALE

GENERAL NOTES CONT.

ALL REFERENCES ON THIS PLAN TO THE COUNTY ENGINEER, THE ROAD DEPARTMENT, OR THE FLOOD CONTROL DISTRICT SHALL APPLY TO THOSE APPROPRIATE SECTIONS OF THE DEPARTMENT OF PUBLIC WORKS.

LOT 44 IS A NON-BUILDABLE LOT
 ISSUE NO HOUSE LATERAL CONNECTIONS UNTIL OUTLET P.C. 10358 IS ACCEPTED FOR PUBLIC USE.
 ISSUE PERMITS FOR LOTS 20 & 21 FROM P.C. 10358

CONSTRUCTION NOTES CONT.

- ALL WYE BRANCHES ONLY MAY BE USED FOR CONNECTIONS TO MAINLINE SEWER IF A.B.S.C.P. IS USED.
- ALL JOINTS BETWEEN CAST IRON PIPE & A.B.S.C.P. SHALL BE MADE WITH APPROVED FITTINGS.
- FULL COMPLIANCE WITH PART III OF THE SPECIAL PROVISIONS IS REQUIRED FOR THE INSTALLATION OF A.B.S.C.P. PIPE.
- MANHOLE WATER STOP GASKETS AND CLAMPS ARE REQUIRED FOR THE CONNECTION OF A.B.S.C.P. COMPOSITE PIPE TO MANHOLE STRUCTURES.
- A.B.S.C.P. BOLLARD PIPE MUST BE USED FOR LWB AND HOUSE LATERAL CONNECTIONS TO A.B.S.C.P. MAIN LINE SEWER PIPE.
- A.B.S.C.P. COMPOSITE PIPE SHALL BE SLOPED IN COMPLIANCE WITH THE TABLE IN SECTION 5-51 OF PART III OF THE SPECIAL PROVISIONS.
- ALL DEVIATED CONNECTIONS SHALL BE USED TO ACCOMPLISH RADII OF CURVATURE LESS THAN 30'

NO CONNECTION FOR THE DISPOSAL OF INDUSTRIAL WASTES SHALL BE MADE TO SEWERS SHOWN ON THESE DRAWINGS UNTIL A PERMIT FOR INDUSTRIAL WASTE WATER DISCHARGE HAS BEEN ISSUED BY THE SANITATION DISTRICTS FOR SAID CONNECTION.

BEFORE BREAKING INTO OR CONSTRUCTION ON A COUNTY SANITATION DISTRICT SEWER AND PRIOR TO FINAL ACCEPTANCE OF THE PROJECT SANITATION DISTRICT INSPECTOR SHALL BE NOTIFIED BY PHONE 902-8608, SO THAT REQUIRED INSPECTION CAN BE MADE.

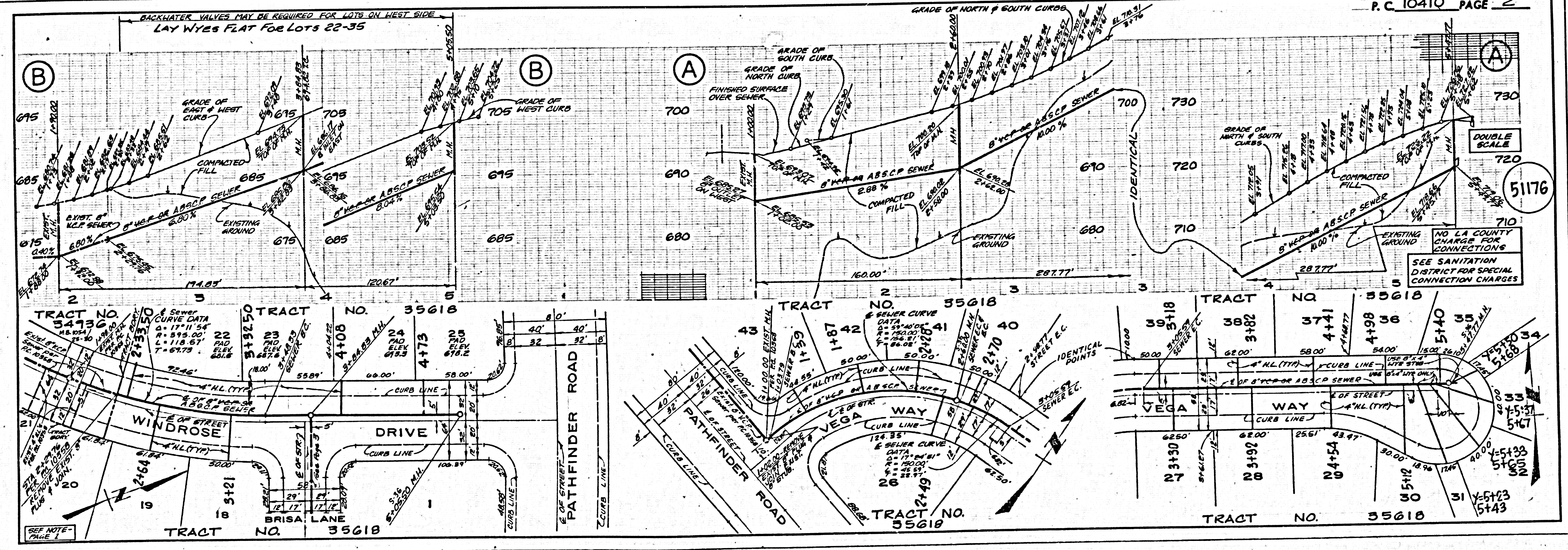
REVISION NO. 1
 CHANGED LATERAL LOCATIONS AND ADDED LAY WYES FLAT FOR LOTS 22-25
 DATE 11-22-85
John J. Pfeiler
 REG. C. E. NO. 23134

GENERAL NOTES:

- ELEVATIONS ARE IN FEET ABOVE U.S.C. & G.S. SEA LEVEL DATUM OF 1988.
- NO "NEW" SHALL BE MADE IN THESE PLANS WITHOUT THE APPROVAL OF THE COUNTY ENGINEER.
- NO REPRESENTATIVE OF THE COUNTY ENGINEER WILL SURVEY OR LAY OUT ANY PORTION OF THE WORK.
- GRADES TO WHICH THIS IMPROVEMENT IS TO BE CONSTRUCTED ARE SHOWN ON PLANS. NO PROPOSED GRADE POINTS FOR TOP OF CURBS, CENTER LINE OF STREETS, OR CENTER LINE OF ALLEYS ARE SHOWN BY CIRCLES ON PROFILES AT ALL POINTS BETWEEN DESIGNATED POINTS THE GRADE SHALL BE ESTABLISHED SO AS TO CONFORM TO A STRAIGHT LINE DRAWN BETWEEN SAID DESIGNATED POINTS.
- THE PRIVATE ENGINEER SHALL FURNISH THE COUNTY ENGINEER WITH GRADE SHEETS AND STATIONING FOR ALL HOUSE LATERALS AND "Y" OR "T" BRANCHES AND SHALL PROVIDE STAKES FOR THEM AT THEIR PROPER LOCATIONS WITH STATIONING PLAINLY MARKED AND "Y" OR "T" BRANCHES SHALL BE CONSTRUCTED IN A STRAIGHT ALIGNMENT AT RIGHT ANGLES FROM THE MAIN LINE STREET EXCEPT AS SHOWN ON THE PLANS. HOUSE LATERALS FROM CHIMNEYS SHALL NOT HAVE AN ANGLE OF LESS THAN 45° WITH THE MAIN LINE SEWER. ANY CHANGE IN ALIGNMENT SHALL BE REQUESTED IN WRITING BY THE PRIVATE ENGINEER.
- THE PRIVATE ENGINEER SHALL FURNISH THE HOUSE LATERAL DEPTH AT THE PROPERTY LINE BELOW THE TOP OF CURB ELEVATION FOR EACH HOUSE LATERAL ON THE GRADE SHEET.
- BEFORE WORK CAN BE STARTED THE CONTRACTOR MUST OBTAIN A PERMIT TO EXCAVATE IN COUNTY STREETS FROM THE L.A. COUNTY ROAD DEPT., DISTRICT OFFICE NO. 100 AND PAY A FEE TO THE COUNTY ENGINEER, 800 S. VERNON AVENUE, LOS ANGELES, CA 90014 TO COVER THE COST OF CONSTRUCTION INSPECTION AND RECORD PLANS.
- IF WORK IS TO BE DONE IN A STATE HIGHWAY, A PERMIT MUST BE OBTAINED FROM THE STATE OF CALIFORNIA, DIVISION OF HIGHWAYS, 180 SOUTH SPRING STREET, LOS ANGELES, CALIFORNIA.
- APPROVAL OF THIS PLAN BY THE COUNTY OF LOS ANGELES DOES NOT CONSTITUTE A REPRESENTATION AS TO THE ACCURACY OF THE LOCATION OF OR THE EXISTENCE OR NON-EXISTENCE OF ANY UNDERGROUND UTILITY PIPE, OR STRUCTURE WITHIN THE LIMITS OF THIS PROJECT. THIS NOTE APPLIES TO ALL PAGES.
- REFER TO SECTION 7.04.1 OF THE STANDARD SPECIFICATIONS REGARDING SAFETY ORDERS.
- PRIOR TO THE ISSUANCE OF THE REQUIRED SEWER CONSTRUCTION PERMIT, THE CONTRACTOR SHALL OBTAIN AND FILE WITH THE COUNTY ENGINEER COPIES OF A PERMIT TO EXCAVATE IN COUNTY STREETS FROM THE LOS ANGELES COUNTY ROAD DEPARTMENT, COUNTY ENGINEER DIVISION OF THE STATE OF CALIFORNIA, DIVISION OF INDUSTRIAL SAFETY AND A CERTIFICATE OF WORKERS COMPENSATION INSURANCE WITH THE DEPARTMENT OF COUNTY ENGINEER, 800 SOUTH VERNON, P.O. BOX 108, LOS ANGELES, CALIFORNIA 90014, NAMED AS THE CERTIFICATE HOLDER TO BE NOTIFIED 30 DAYS PRIOR TO CANCELLATION OF POLICY.

CONSTRUCTION NOTES:

- WORK SHALL BE CONSTRUCTED ACCORDING TO THE STANDARD SPECIFICATIONS FOR PUBLIC WORKS CONSTRUCTION (LATEST EDITION) AND COUNTY ENGINEER SPECIAL PROVISIONS FOR THE CONSTRUCTION OF SANITARY SEWERS AND SHALL BE PROSECUTED ONLY IN THE PRESENCE OF THE COUNTY ENGINEER.
- THE CONTRACTOR SHALL NOTIFY THE CONSTRUCTION DIVISION, PUBLIC WORKS BY TELEPHONE (902) 860-8601 AT LEAST 48 HOURS BEFORE STARTING ANY WORK UNDER THIS CONTRACT.
- HOUSE LATERALS TO BE CONSTRUCTED WITH INVERTS AT PROPERTY LINE 3 FEET BELOW CURB GRADE EXCEPT AS NOTED.
- WYE OR TEE BRANCHES MAY BE USED FOR CONNECTIONS TO MAINLINE SEWERS EXCEPT AS NOTED.
- ALL STRUCTURES SHALL BE EITHER BRICK MANHOLES PER 5-3 OR PRECAST CONCRETE MANHOLES PER 5-36, EXCEPT AS NOTED.
- PROPOSED STAKES ON THE PROPERTY LINE OR PROPERTY LINES PRODUCED AT RIGHT ANGLES TO THE SEWER LINE AT THE CENTER LINE OF EACH MANHOLE.
- MANHOLE TOPS IN UNIMPROVED RIGHTS OF WAY TO BE SIX INCHES ABOVE FINISHED GRADE.
- WITHEPFD CLAY PIPE JOINTS SHALL BE TYPE "C" OR "D" PER STANDARD SPECIFICATIONS SECTION 308-3.
- IF A POWER POLE IS WITHIN THREE FEET OF THE SEWER, THE SEWER SHALL BE ENCASED PER 5-36 CASE 2 TWO FEET ON EACH SIDE FROM THE POINT OF INTERFERENCE.
- IF DURING THE COURSE OF CONSTRUCTION IT IS DETERMINED THAT THERE IS LESS THAN FOUR FEET OF COVER OVER THE TOP OF A MAIN LINE OR HOUSE LATERAL SEWER WHICH IS NOT INDICATED ON THE PLANS, THE PIPE SHALL BE ENCASED PER 5-36 CASE 2 UNLESS OTHERWISE APPROVED BY THE COUNTY ENGINEER.
- ALL JOINTS BETWEEN CAST IRON PIPE AND WITHEPFD CLAY PIPE SHALL BE MADE WITH A RUBBER SLEEVE JOINT, TYPE "C" OR "D" (WITH RUBBERS IF NECESSARY) PER STANDARD SPECIFICATIONS, SECTION 308-3.
- SEWERS TO BE TESTED FOR LEAKAGE PER SECTION 308-1.4 OF THE STANDARD SPECIFICATIONS AND CALIFORNIA STATE HIGHWAY REQUIREMENTS IN ACCORDANCE WITH PERMITS.
- RESURFACE ALL TRENCHES WITHIN PAVED AREAS TO MEET LA COUNTY ROAD DEPT. OR CALIFORNIA STATE HIGHWAY REQUIREMENTS IN ACCORDANCE WITH PERMITS.
- FULL COMPLIANCE WITH SECTION 308-1.3 OF THE SPECIAL PROVISIONS WILL BE REQUIRED FOR BACKFILL IN STREETS. CERTIFICATION OF BACKFILL COMPACTION AND SAND EQUIVALENTS BY A QUALIFIED, REGISTERED TESTING LABORATORY SHALL BE PROVIDED BY THE PERMITTEE PRIOR TO THE ISSUANCE OF A CERTIFICATE OF PARTIAL ACCEPTANCE.
- SPECIAL BACKFILL IN BASEMENT CONSTRUCTION (A) BACKFILL TRENCH AND REPLACE OTHER EARTH SO AS TO ACHIEVE THE NATURAL OR FINISHED GRADES AND SLOPES SHOWN ON THE GRADING PLAN APPROVED FOR THE DEVELOPMENT BY THE BUILDING AND SAFETY DIVISION. (B) ALL BACKFILL AND EARTH REPLACES SHALL BE COMPACTED TO A MINIMUM OF 90% OF MAXIMUM DENSITY PER A.L.S. 510. METHOD OF TEST SHALL BE INDICATED. ACCEPTABLE CERTIFICATION OF SUCH COMPACTION SHALL BE SUBMITTED TO THE CONSTRUCTION DIVISION, PUBLIC WORKS.

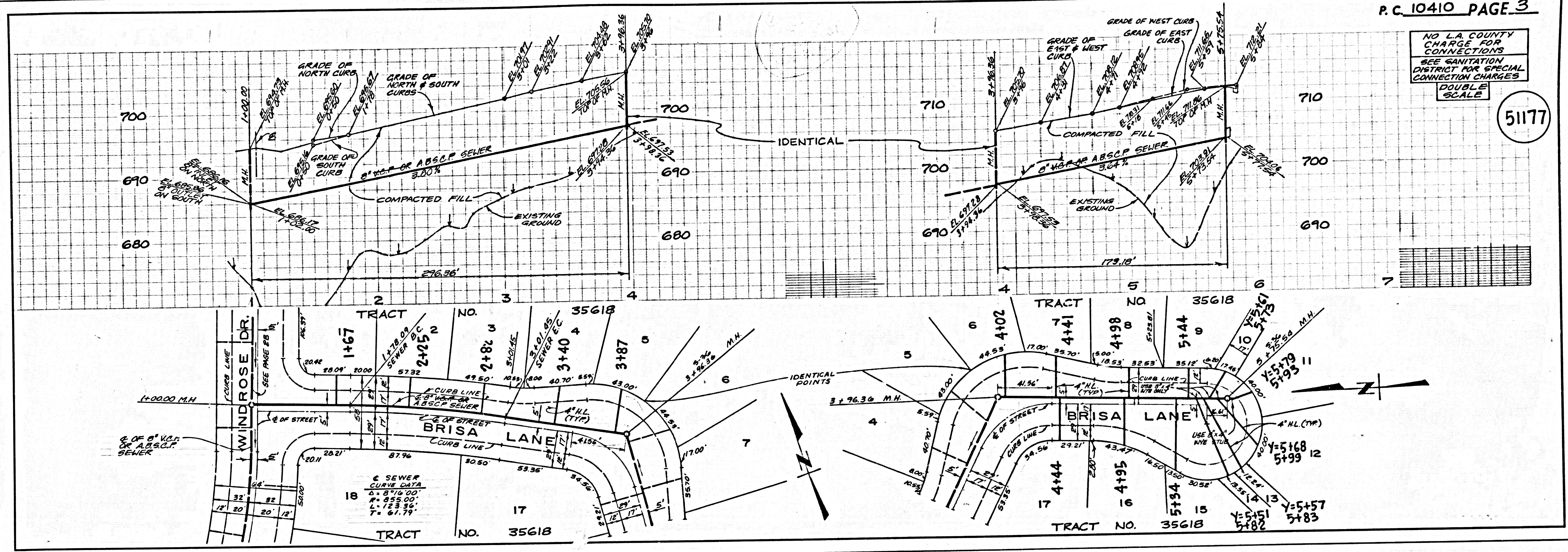


0140129

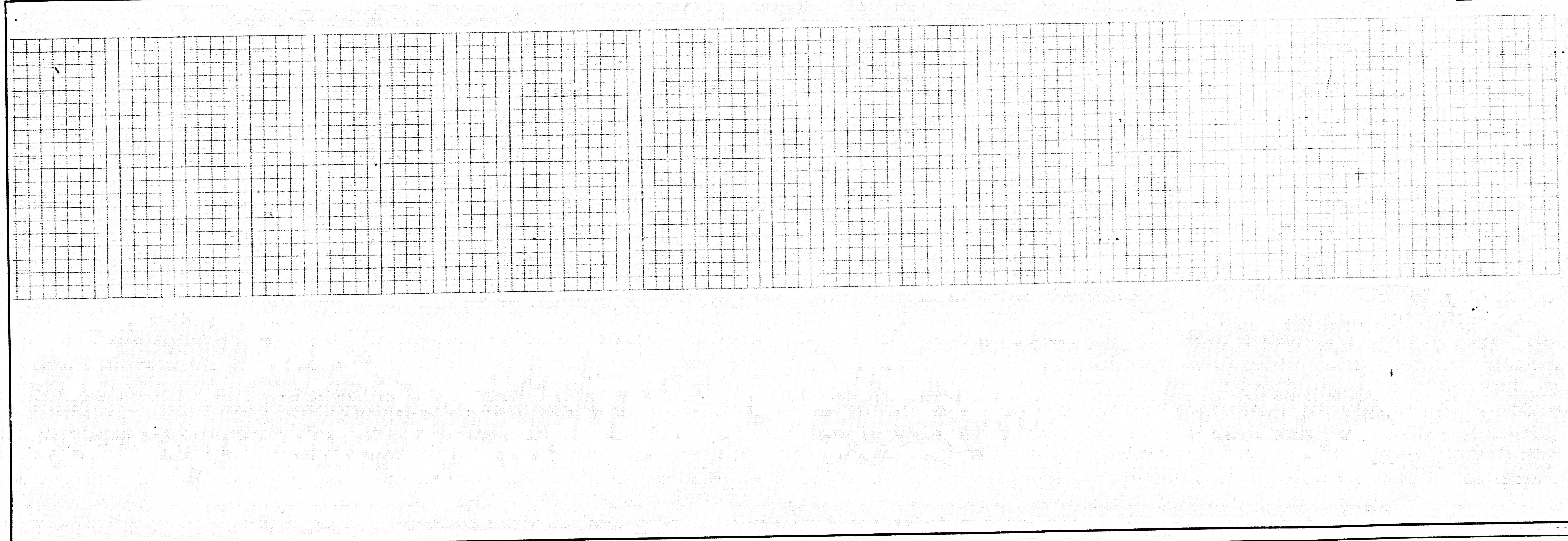
81823 ON TRACT

NO L.A. COUNTY CHARGE FOR CONNECTIONS SEE SANITATION DISTRICT FOR SPECIAL CONNECTION CHARGES DOUBLE SCALE

51177



PAGE



5

PC 10410

BRISA ON TRACT