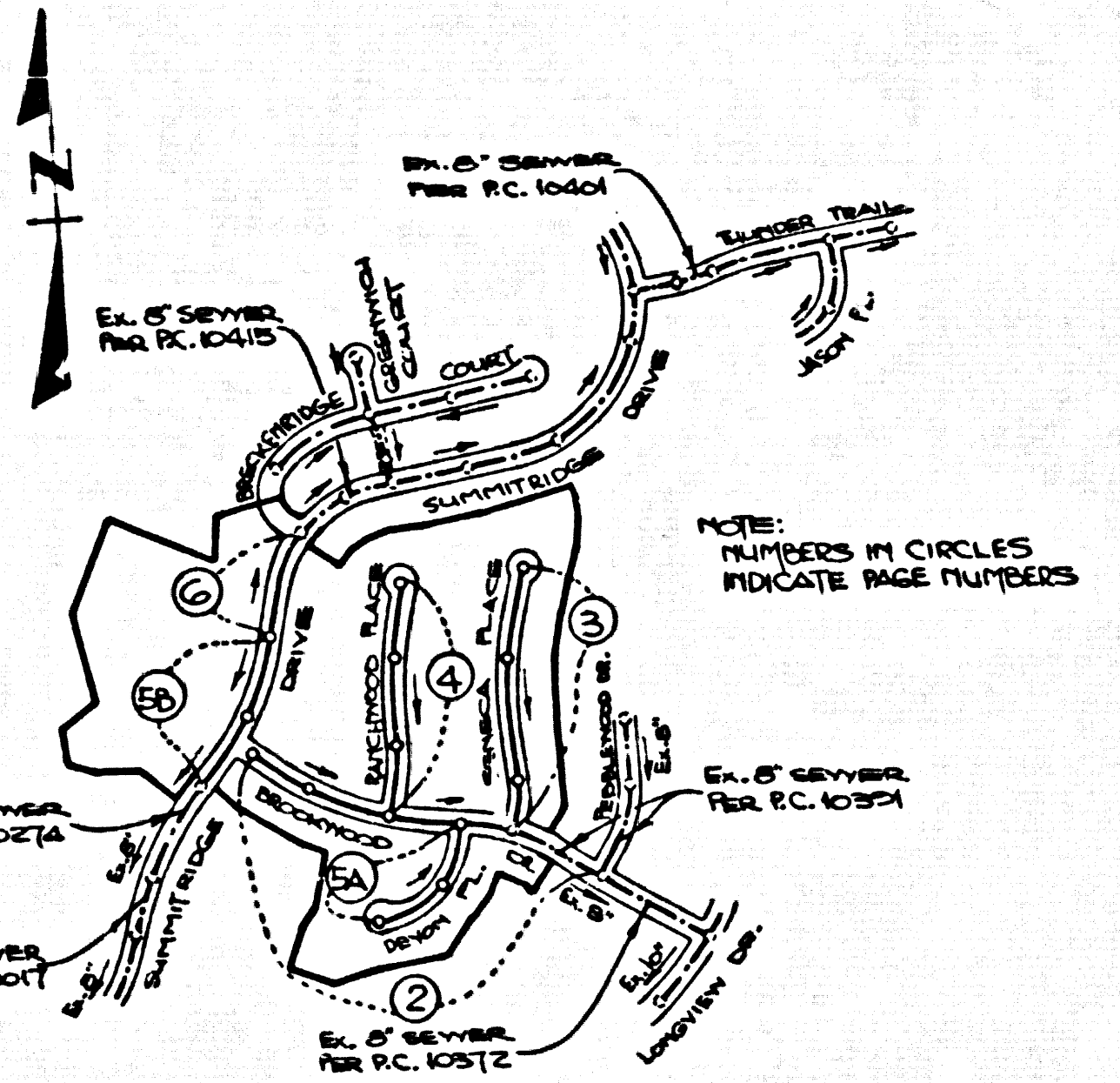


B.M. C.O. 3911 ELEV. 895.556
 L & T LINE END CB 44 FT S +
 96 FT V C/L INT GRAND AVE +
 DIAMOND BAR BLVD W/CD
 BN C-13
 OTTERBEIN QUAD. 1975



INDEX MAP
 TRACT NO. 42570
 P.C. NO. 10413
 SCALE: 1"=600'

NO CONNECTION FOR THE DISPOSAL OF INDUSTRIAL WASTES SHALL BE MADE TO SEWERS SHOWN ON THESE DRAWINGS UNTIL A PERMIT FOR INDUSTRIAL WASTEWATER DISCHARGE HAS BEEN ISSUED BY THE SANITATION DISTRICTS FOR SAID CONNECTION.

ISSUE NO CONSTRUCTION PERMIT UNTIL TRACT NO. 42567 (P.C. 10391) RECORDS

TRACT NO. 42570 & TRACT NO. 42571 WILL HAVE TO BE RECORDED SIMULTANEOUSLY

ISSUE NO HOUSE CONNECTION PERMITS UNTIL P.C.'S. 10351, 10401, 10274 & 10415 ARE ACCEPTED

PRIVATE ENGINEER'S NOTICE TO CONTRACTORS

The existence and location of any underground utility pipes or structures shown on these plans are obtained by a search of the available records. To the best of our knowledge there are no existing utilities except as shown on these plans. The contractor is required to take due precautionary measures to protect the utility lines shown and any other lines not of record or not shown on these plans. The contractor shall be responsible for notifying "UNDERGROUND SERVICE ALERT" at 1-800-422-4133 two working days prior to any excavation or construction.

J. H. Sarraging
 Registered Engineer R.C.E. No. 19233

GENERAL NOTES CONT'D.

12. ALL REFERENCES ON THIS PLAN TO THE COUNTY ENGINEER, THE ROAD DEPARTMENT, OR THE FLOOD CONTROL DISTRICT SHALL APPLY TO THOSE APPROPRIATE SECTIONS OF THE DEPARTMENT OF PUBLIC WORKS.

BEFORE BREAKING INTO OR CONSTRUCTION ON A COUNTY SANITATION DISTRICT SEWER AND PRIOR TO FINAL ACCEPTANCE OF THE PROJECT, SANITATION DISTRICT INSPECTOR SHALL BE NOTIFIED BY PHONE 218 - 962-8605 SO THAT REQUIRED INSPECTION CAN BE MADE.

CONSTRUCTION NOTES CONT'D.

- 16. FULL COMPLIANCE WITH PART IV OF THE SPECIAL PROVISIONS IS REQUIRED FOR THE INSTALLATION OF A.B.S. COMPOSITE PIPE.
- 17. MANHOLE WATER STOP GASKETS AND CLAMPS ARE REQUIRED FOR THE CONNECTION OF A.B.S. COMPOSITE PIPE TO MANHOLE STRUCTURES.
- 18. A.B.S. SOLID WALL PIPE MUST BE USED FOR VTE AND HOUSE LATERAL CONNECTIONS TO A.B.S. COMPOSITE MAINLINE SEWER PIPE.
- 19. A.B.S. COMPOSITE PIPE SHALL BE BEDDED IN CONFORMANCE WITH THE TABLE IN SECTION 8-3.1 OF PART IV OF THE SPECIAL PROVISIONS.
- 20. THREE DEGREE DEFLECTION COUPLERS ARE REQUIRED FOR RADIUS OF CURVATURE LESS THAN 380 FEET WHEN USING 8" A.B.S. COMPOSITE PIPE.
- 21. NO CONNECTIONS FOR DISPOSAL OF INDUSTRIAL WASTE IS ALLOWED IF A.B.S. COMPOSITE PIPE IS USED.
- 22. SEWER LINE CURVATURE SHALL NOT BE ACHIEVED BY PULLING OF JOISTS OR BEVELING PIPE ENDS WHEN USING PLASTIC PIPE INCLUDING A.B.S. COMPOSITE PIPE.
- 23. ALL VTE AND/OR HOUSE LATERALS ARE TO BE LOCATED AT LEAST FIVE FEET APART AND WHEN POSSIBLE NOT CLOSER THAN FIVE FEET TO ANY MANHOLE.
- 24. A.B.S. SOLID WALL PIPE IS NOT ACCEPTABLE FOR USE AS MAINLINE SEWER.
- 25. ONLY VTE BRANCHES ARE TO BE USED FOR CONNECTION TO A.B.S. COMPOSITE MAINLINE SEWER PIPE.

GENERAL NOTES:

- 1. ELEVATIONS ARE IN FEET ABOVE U.S.C. & G.S. SEA LEVEL DATUM OF 1929.
- 2. NO REVISIONS SHALL BE MADE IN THESE PLANS WITHOUT THE APPROVAL OF PUBLIC WORKS.
- 3. NO REPRESENTATIVE OF THE COUNTY ENGINEER WILL SURVEY OR LAY OUT ANY PORTION OF THE WORK.
- 4. GRADES TO WHICH THIS IMPROVEMENT IS TO BE CONSTRUCTED ARE SHOWN ON PLANS AND PROFILES. GRADE POINTS FOR TOP OF CURBS, CENTER LINE OF STREETS, OR CENTER LINE OF ALLEYS ARE SHOWN BY CIRCLES ON PROFILES. AT ALL POINTS BETWEEN DESIGNATED POINTS THE GRADE SHALL BE ESTABLISHED SO AS TO CONFORM TO A STRAIGHT LINE DRAWN BETWEEN SAID DESIGNATED POINTS.
- 5. THE PRIVATE ENGINEER SHALL FURNISH THE COUNTY ENGINEER WITH GRADE SHEETS AND STATIONING FOR ALL HOUSE LATERALS AND "Y" OR "T" BRANCHES AND SHALL PROVIDE STAKES FOR THEM AT THEIR PROPER LOCATIONS WITH STATIONING PLAINLY MARKED. AS SHOWN ON THE PLANS. HOUSE LATERALS FROM CHIMNEYS SHALL NOT HAVE AN ANGLE OF LESS THAN 45° WITH THE MAIN LINE SEWER. ANY CHANGE IN ALIGNMENT SHALL BE REQUESTED IN WRITING BY THE PRIVATE ENGINEER.
- 6. THE PRIVATE ENGINEER SHALL FURNISH THE HOUSE LATERAL DEPTH AT THE PROPERTY LINE BELOW THE TOP OF CURB ELEVATION FOR EACH HOUSE LATERAL ON THE GRADE SHEET.
- 7. BEFORE WORK CAN BE STARTED, THE CONTRACTOR MUST OBTAIN A PERMIT TO EXCAVATE IN COUNTY STREETS FROM THE L.A. COUNTY ROAD DEPT., DISTRICT OFFICE NO. 1, 100 SOUTH SPRING STREET, LOS ANGELES, CALIFORNIA.
- 8. IF WORK IS TO BE DONE IN A STATE HIGHWAY, A PERMIT MUST BE OBTAINED FROM THE STATE OF CALIFORNIA, DIVISION OF HIGHWAYS, 120 SOUTH SPRING STREET, LOS ANGELES, CALIFORNIA.
- 9. APPROVAL OF THIS PLAN BY THE COUNTY OF LOS ANGELES DOES NOT CONSTITUTE A REPRESENTATION AS TO THE ACCURACY OF THE LOCATION OF OR THE EXISTENCE OR NON-EXISTENCE OF ANY UNDERGROUND UTILITY PIPE, OR STRUCTURE WITHIN THE LIMITS OF THE PROJECT. THIS NOTE APPLIES TO ALL PAGES.
- 10. REFER TO SECTION 7 10.41 OF THE STANDARD SPECIFICATIONS REGARDING SAFETY ORDERS.
- 11. PRIOR TO THE ISSUANCE OF THE REQUIRED SEWER CONSTRUCTION PERMIT, THE CONTRACTOR SHALL OBTAIN AND FILE WITH THE COUNTY ENGINEER COPIES OF A PERMIT TO EXCAVATE IN COUNTY STREETS FROM THE LOS ANGELES COUNTY ROAD DEPARTMENT, A PERMIT FOR EXCAVATIONS AND TRENCHES FROM THE STATE OF CALIFORNIA, DIVISION OF INDUSTRIAL SAFETY AND CERTIFICATE OF WORKERS COMPENSATION INSURANCE WITH THE DEPARTMENT OF COUNTY ENGINEER, 380 SOUTH VERMONT, RM. 408, LOS ANGELES, CALIFORNIA 90008. NAMED AS THE CERTIFICATE HOLDER TO BE NOTIFIED 30 DAYS PRIOR TO CANCELLATION OF POLICY.

CONSTRUCTION NOTES:

- 1. WORK SHALL BE CONSTRUCTED ACCORDING TO THE STANDARD SPECIFICATIONS FOR PUBLIC WORKS CONSTRUCTION (1985 EDITION) AND COUNTY ENGINEER SPECIAL PROVISIONS FOR THE CONSTRUCTION OF SANITARY SEWERS DATED SEPT. 21, 1976, AND SHALL BE PROSECUTED ONLY IN THE PRESENCE OF THE COUNTY ENGINEER.
- 2. THE CONTRACTOR SHALL NOTIFY THE CONSTRUCTION DIV. PUBLIC WORKS DEPT. TEL. (213) 226-8281 AT LEAST 24 HOURS BEFORE STARTING ANY WORK UNDER THIS CONTRACT.
- 3. HOUSE LATERALS TO BE CONSTRUCTED WITH INVERTS AT PROPERTY LINE 8 FEET BELOW CURB GRADE EXCEPT AS NOTED.
- 4. VTE OR "Y" BRANCHES MAY BE USED FOR CONNECTIONS TO MAINLINE SEWERS EXCEPT AS NOTED.
- 5. ALL STRUCTURES SHALL BE CONSTRUCTED IN ACCORDANCE WITH THE STANDARD SPECIFICATIONS EXCEPT AS NOTED.
- 6. PROVIDE STAKES ON THE PROPERTY LINE OR PROPERTY LINES PRODUCED AT RIGHT ANGLES TO THE SEWER LINE AT THE CENTER LINE OF EACH MANHOLE.
- 7. MANHOLE TOPS IN UNIMPROVED RIGHTS OF WAY TO BE SIX INCHES ABOVE FINISHED GRADE.
- 8. WITRIFIED CLAY PIPE JOINTS SHALL BE TYPE "D" OR "N" PER STANDARD SPECIFICATIONS SECTION 308-2.
- 9. IF A POWER POLE IS WITHIN THREE FEET OF THE SEWER, THE SEWER SHALL BE ENCASED PER 8-2.3 CASE I, TWO FEET ON EACH SIDE FROM THE POINT OF INTERFERENCE.
- 10. IF DURING THE COURSE OF CONSTRUCTION IT IS DETERMINED THAT THERE IS LESS THAN FOUR FEET OF COVER OVER THE TOP OF A MAIN LINE OR HOUSE LATERAL SEWER WHICH IS NOT INDICATED ON THE PLANS, THE PIPE SHALL BE ENCASED PER 8-2.3 CASE II UNLESS OTHERWISE APPROVED BY THE COUNTY ENGINEER.
- 11. ALL JOINTS BETWEEN CAST IRON PIPE AND WITRIFIED CLAY PIPE SHALL BE MADE WITH A RUBBER SLEEVE JOINT, TYPE "C" OR "D" WITH BUSHING IF NECESSARY PER STANDARD SPECIFICATIONS SECTION 308-2.
- 12. ALL JOINTS BETWEEN WITRIFIED CLAY PIPE SHALL BE MADE WITH APPROVED FITTINGS.
- 13. ALL JOINTS BETWEEN WITRIFIED CLAY PIPE SHALL BE MADE WITH APPROVED FITTINGS.
- 14. ALL JOINTS BETWEEN WITRIFIED CLAY PIPE SHALL BE MADE WITH APPROVED FITTINGS.
- 15. ALL JOINTS BETWEEN WITRIFIED CLAY PIPE SHALL BE MADE WITH APPROVED FITTINGS.
- 16. ALL JOINTS BETWEEN WITRIFIED CLAY PIPE SHALL BE MADE WITH APPROVED FITTINGS.
- 17. ALL JOINTS BETWEEN WITRIFIED CLAY PIPE SHALL BE MADE WITH APPROVED FITTINGS.
- 18. RESURFACE ALL TRENCHES WITHIN PAVED AREAS TO MEET L.A. COUNTY ROAD DEPT. OR CALIFORNIA STATE HIGHWAY REQUIREMENTS IN ACCORDANCE WITH PERMITS.
- 19. FULL COMPLIANCE WITH SECTION 308-3.3 OF THE SPECIAL PROVISIONS WILL BE REQUIRED FOR BACKFILL IN STREETS. CERTAIN RIGHTS IN ACCORDANCE WITH PERMITS.
- 20. FULL COMPLIANCE WITH SECTION 308-3.3 OF THE SPECIAL PROVISIONS WILL BE REQUIRED FOR BACKFILL IN STREETS. CERTAIN RIGHTS IN ACCORDANCE WITH PERMITS.
- 21. SPECIAL BACKFILL IN SEWER TRENCH CONSTRUCTION: (A) BACKFILL TRENCH AND REPLACE OTHER EARTH SO AS TO ACHIEVE THE NATURAL OR FINISHED GRADES AND SLOPES SHOWN ON THE GRADING PLAN APPROVED FOR THE DEVELOPMENT BY THE BUILDING AND SAFETY DIVISION; (B) ALL BACKFILL AND EARTH REPLACEMENT SHALL BE COMPACTED TO A MINIMUM OF 90% OF MAXIMUM DENSITY AND SAFETY DIVISION; (C) ALL BACKFILL AND EARTH REPLACEMENT SHALL BE COMPACTED TO A MINIMUM OF 90% OF MAXIMUM DENSITY AND SAFETY DIVISION; (D) ALL BACKFILL AND EARTH REPLACEMENT SHALL BE COMPACTED TO A MINIMUM OF 90% OF MAXIMUM DENSITY AND SAFETY DIVISION.

DOUBLE SCALE

PROFILE, ALIGNMENT AND GRADE OF PAGE 1
SANITARY SEWERS

TO BE CONSTRUCTED IN
TRACT NO. 42570
 PRIVATE CONTRACT NO. 10413

U-149-H-182
 W.S. 39-D3

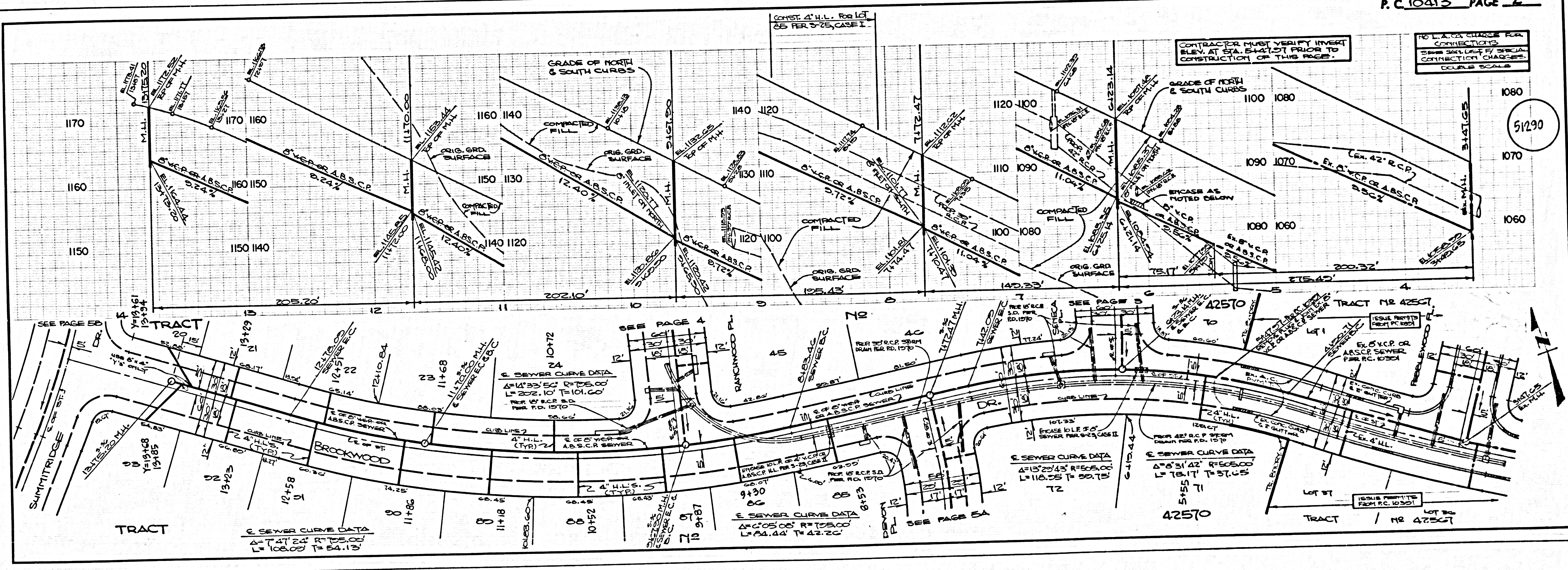
3 SHEETS, 6 PAGES
 SCALE: 1"=8' AUGUST, 1985
 PREPARED IN THE OFFICES OF

LIND & HILLERUD, INC.
 2085 HUNTINGTON DRIVE
 SAN PABLO, CA. 94806
 REG. C.E. 19233

THE FOLLOWING LATEST REVISED STANDARD PLANS ON FILE IN THE OFFICE OF THE DEPARTMENT OF PUBLIC WORKS SHALL APPLY TO THE CONSTRUCTION OF THIS PROJECT:

COUNTY	A.P.M.A.
MINIMUM PUBLIC SAFETY REQUIREMENTS	203-0
STANDARD MANHOLE RING	203-0
MANHOLE FOR SEWER PIPE	203-0
CHANGING AND ENCASING	203-0
VTE OR "Y" BRANCH	203-0
ALLOWANCE THROUGH WALLS	203-0
WOODING MANHOLE FRAMES AND COVERS	203-0
NON-REINFORCED PRECAST CONCRETE MANHOLES	200-0
BEDDING FOR A.B.S. & P.V.C. SEWER PIPE	9-21A

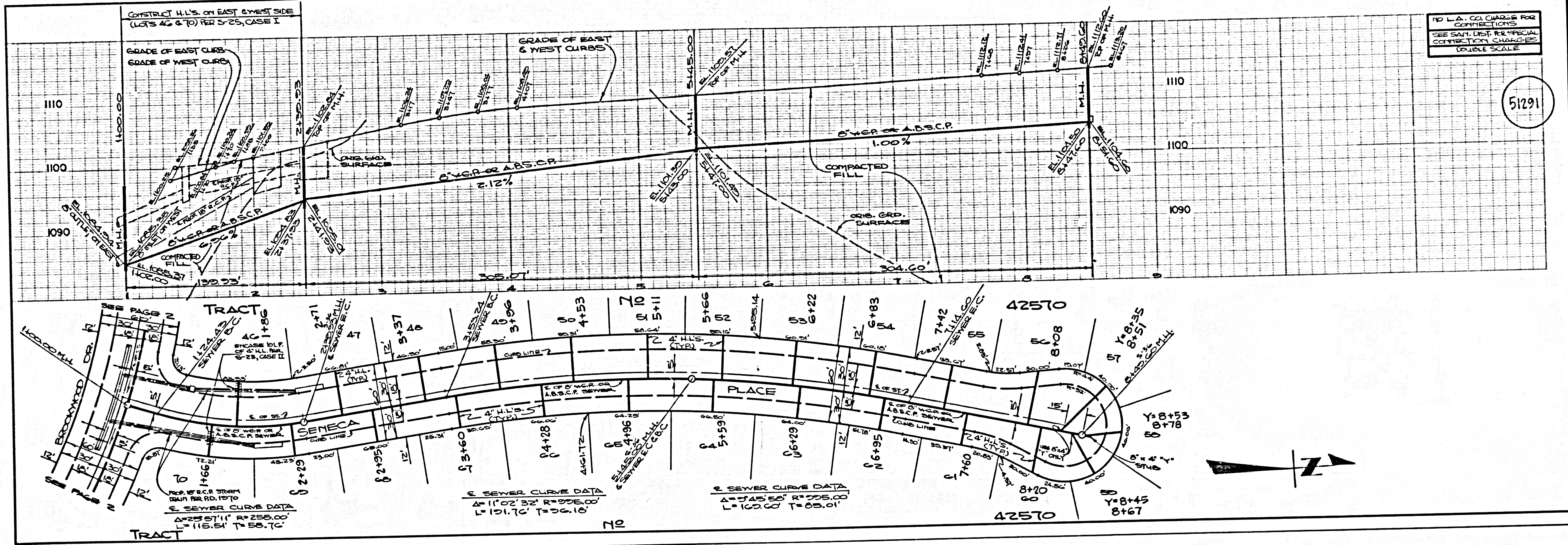
COUNTY OF LOS ANGELES, CALIFORNIA
 THOMAS A. TIDENANSON, DIRECTOR
 DEPARTMENT OF PUBLIC WORKS
 APPROVED: *Thomas A. Tidenanson*
 DATE: 8/13/85
 CHARLES V. CARR, CHIEF ENGINEER
 CO. MAN. DIST. NO. 21
 APPROVED: *Charles V. Carr*
 DATE: 8/13/85
 SAN DIMAS BLDG. DIST. 10.0



OTTERBEIN QUAD. 1975

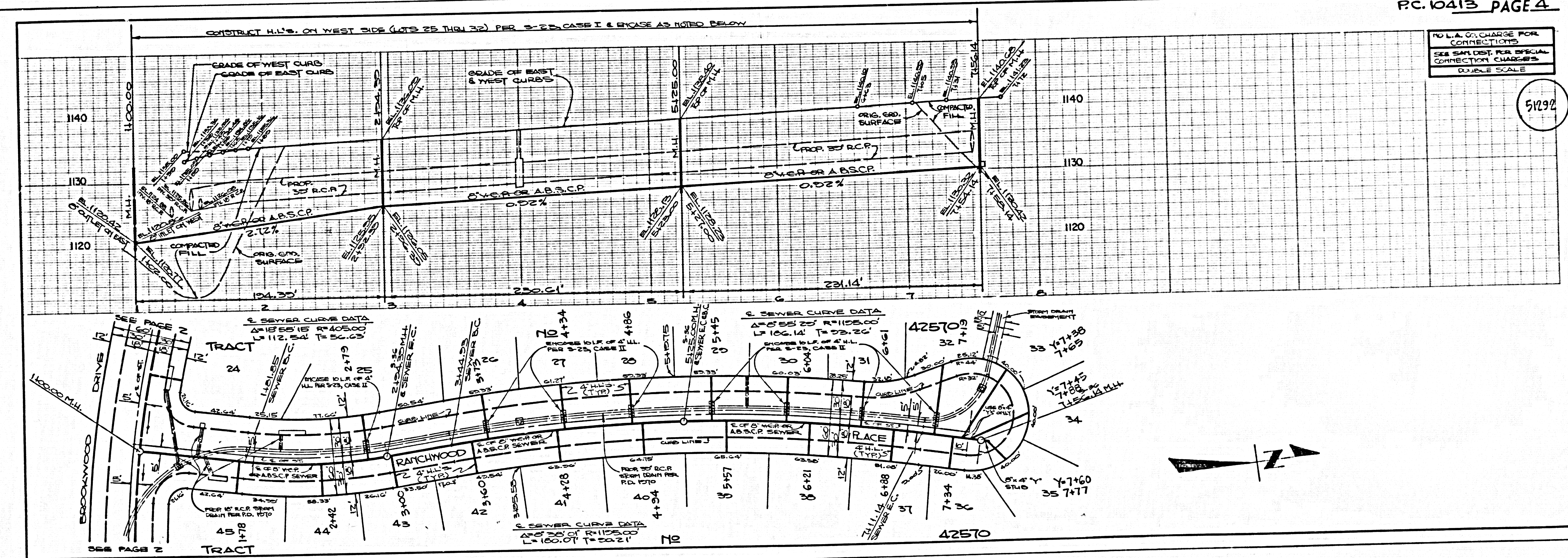
NO L.A. CHARGE FOR CONNECTIONS
SEE SAN. DIST. FOR SPECIAL CONNECTION CHARGES
DOUBLE SCALE

51291



NO L.A. CHARGE FOR CONNECTIONS
SEE SAN. DIST. FOR SPECIAL CONNECTION CHARGES
DOUBLE SCALE

51292



PC. 10413

OF 54 91 T. 351

