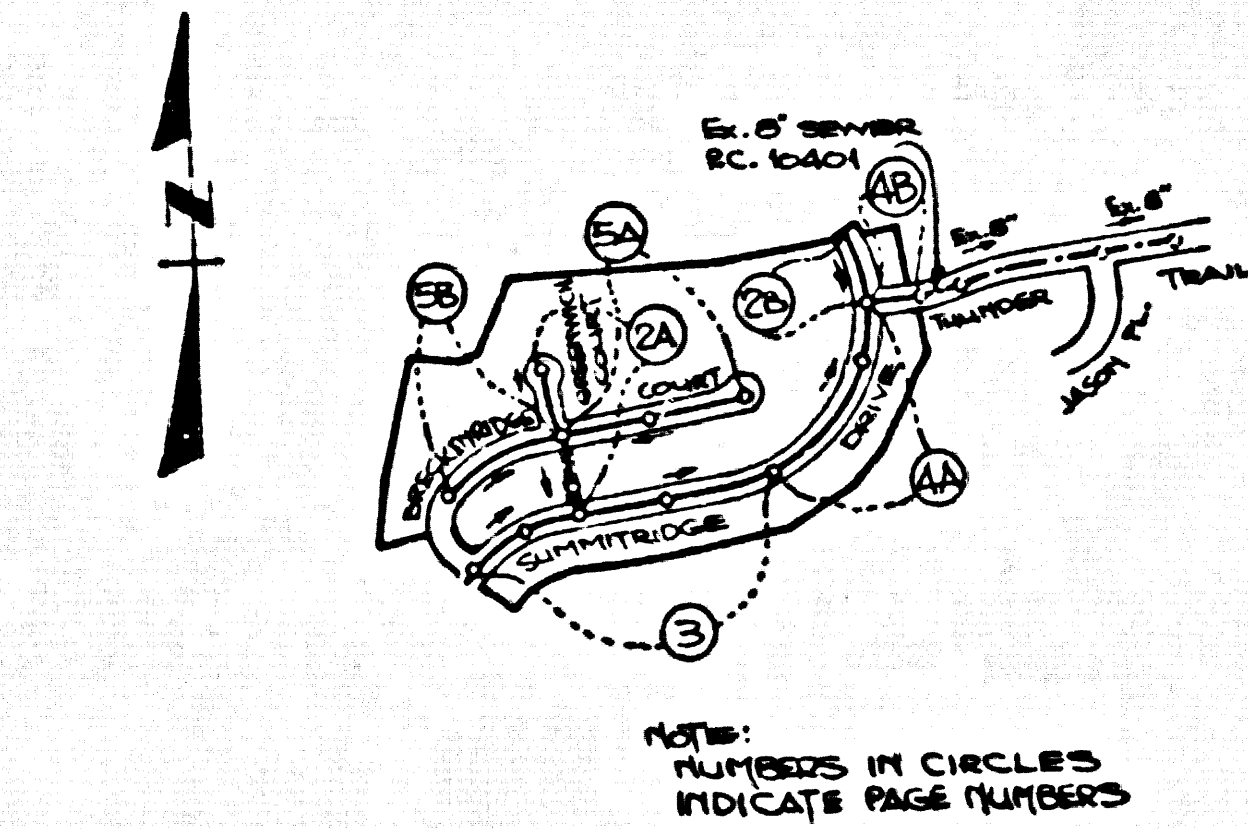


B.M. C.G. 3911 ELEV. 895.556  
 L & T IN E END CB 44 FT S +  
 96 FT W C/L INT GRAND AVE +  
 DIAMOND BAR BLVD (TRD  
 BM C-12)  
 OTTERBEIN QUAD. 1973

REVISION NO. 1  
 APPROVED BY: *Sandy G. Hald*  
 DEPT. OF PUBLIC WORKS  
 DATE: 8-8-86

PAGE 2A: SANITARY SEWER MAINLINE & BASEMENT FROM STA. 1100 TO 4100.10  
 PAGE 3: LOCATE M.H. AT STA. 4452.50 & ADJUST MAINLINE GRADE FROM STA. 1100 TO 1140.00  
 PAGE 3A & 3B: CALCULATE M.H. AT STA. 4452.50 & ADJUST MAINLINE GRADE FROM STA. 1100 TO 1140.00



INDEX MAP  
 TRACT NO. 42571  
 P.C. 10415  
 SCALE: 1"=60.0'

ISSUE NO CONSTRUCTION PERMIT UNTIL TRACT NO. 42568 (P.C. 10398) & TRACT NO. 42569 (P.C. 10401) BOTH RECORD

ISSUE NO HOUSE CONNECTION PERMITS UNTIL P.C. 10401 IS ACCEPTED BY L.A. COUNTY FOR PUBLIC USE

**PRIVATE ENGINEER'S NOTICE TO CONTRACTORS**

The existence and location of any underground utility pipes or structures shown on these plans are obtained by a search of the available records. To the best of our knowledge there are no existing utilities except as shown on these plans. The contractor is required to take due precautionary measures to protect the utility lines shown and any other lines not of record or not shown on these plans. The contractor shall be responsible for notifying "UNDERGROUND SERVICE ALERT" at 1-800-422-4133 two working days prior to any excavation or construction.

*Sandy G. Hald*  
 Registered Engineer R.C.E. No. 19233

**GENERAL NOTES CONT'D.**

12. ALL REFERENCES ON THIS PLAN TO THE COUNTY ENGINEER, THE ROAD DEPARTMENT, OR THE FLOOD CONTROL DISTRICT SHALL APPLY TO THOSE APPROPRIATE SECTIONS OF THE DEPARTMENT OF PUBLIC WORKS.  
 BEFORE BREAKING INTO OR CONSTRUCTION ON A COUNTY SANITATION DISTRICT SEWER AND PRIOR TO FINAL ACCEPTANCE OF THE PROJECT, SANITATION DISTRICT INSPECTION SHALL BE NOTIFIED BY PHONE 818 - 942-8605 SO THAT REQUIRED INSPECTION CAN BE MADE.

**CONSTRUCTION NOTES CONT'D.**

16. FULL COMPLIANCE WITH PART IV OF THE SPECIAL PROVISIONS IS REQUIRED FOR THE INSTALLATION OF A-B-S. COMPOSITE PIPE.
17. MANHOLE WATER STOP BASKETS AND CLIPS ARE REQUIRED FOR THE CONNECTION OF A-B-S. COMPOSITE PIPE TO MANHOLE STRUCTURES.
18. A-B-S. SOLID WALL PIPE MUST BE USED FOR VYE AND HOUSE LATERAL CONNECTIONS TO A-B-S. COMPOSITE MAINLINE SEWER PIPE.
19. A-B-S. COMPOSITE PIPE SHALL BE BEDDED IN CONFORMANCE WITH THE TABLE IN SECTION B-3-1 OF PART IV OF THE SPECIAL PROVISIONS.
20. THREE DEGREE DEFLECTION COUPLERS ARE REQUIRED FOR RADIUS OF CURVATURE LESS THAN 300 FEET WHEN USING 8" A-B-S. COMPOSITE PIPE.
21. NO CONNECTIONS FOR DISPOSAL OF INDUSTRIAL WASTE IS ALLOWED IF A-B-S. COMPOSITE PIPE IS USED.
22. SEWER LINE CURVATURE SHALL NOT BE ACHIEVED BY PULLING OF JOINTS OR BEVELING PIPE ENDS WHEN USING PLASTIC PIPE INCLUDING A-B-S. COMPOSITE PIPE.
23. ALL VYE AND/OR HOUSE LATERALS ARE TO BE LOCATED AT LEAST FIVE FEET APART AND WHEN POSSIBLE NOT CLOSER THAN FIVE FEET TO ANY MANHOLE.
24. A-B-S. SOLID WALL PIPE IS NOT ACCEPTABLE FOR USE AS MAINLINE SEWER.
25. ONLY VYE BRANCHES ARE TO BE USED FOR CONNECTION TO A-B-S. COMPOSITE MAINLINE SEWER PIPE. NO CONNECTION FOR THE DISPOSAL OF INDUSTRIAL WASTES SHALL BE MADE TO SEWERS SHOWN ON THESE DRAWINGS UNTIL A PERMIT FOR INDUSTRIAL WASTEWATER DISCHARGE HAS BEEN ISSUED BY THE SANITATION DISTRICTS FOR SAID CONNECTION.

**GENERAL NOTES:**

1. ELEVATIONS ARE IN FEET ABOVE U.S.C. & G.S. SEA LEVEL DATUM OF 1928.
2. NO REVISIONS SHALL BE MADE IN THESE PLANS WITHOUT THE APPROVAL OF THE DEPARTMENT OF PUBLIC WORKS.
3. NO REPRESENTATIVE OF THE COUNTY ENGINEER WILL SURVEY OR LAY OUT ANY PORTION OF THE WORK.
4. GRADES TO WHICH THIS IMPROVEMENT IS TO BE CONSTRUCTED ARE SHOWN ON PLANS AND PROFILES. GRADE POINTS FOR TOP OF CURBS, CENTER LINE OF STREETS, OR CENTER LINE OF ALLEYS ARE SHOWN BY CIRCLES ON PROFILES AT ALL POINTS BETWEEN DESIGNATED POINTS. THE GRADE SHALL BE ESTABLISHED SO AS TO CONFORM TO A STRAIGHT LINE DRAWN BETWEEN SAID DESIGNATED POINTS.
5. THE PRIVATE ENGINEER SHALL FURNISH THE COUNTY ENGINEER WITH GRADE SHEETS AND STATIONING FOR ALL HOUSE LATERALS AND 10" OR 12" BRANCHES AND SHALL PROVIDE STAKES FOR THEM AT THEIR PROPER LOCATIONS WITH STATIONING PLAINLY MARKED. ALL HOUSE LATERALS SHALL BE CONSTRUCTED IN A STRAIGHT ALIGNMENT AT RIGHT ANGLES FROM THE MAIN LINE SEWER EXCEPT AS SHOWN ON THE PLANS. HOUSE LATERALS FROM CHIMNEYS SHALL NOT HAVE AN ANGLE OF LESS THAN 45° WITH THE MAIN LINE SEWER. ANY CHANGE IN ALIGNMENT SHALL BE REQUESTED IN WRITING BY THE PRIVATE ENGINEER.
6. THE PRIVATE ENGINEER SHALL FURNISH THE HOUSE LATERAL DEPTH AT THE PROPERTY LINE BELOW THE TOP OF CURB ELEVATION FOR EACH HOUSE LATERAL ON THE GRADE SHEET.
7. BEFORE WORK CAN BE STARTED, THE CONTRACTOR MUST OBTAIN A PERMIT TO EXCAVATE IN COUNTY STREETS FROM THE L.A. COUNTY ROAD DEPT. DISTRICT OFFICE NO. 1 AND PAY A FEE TO THE COUNTY ENGINEER, 900 S. VERNOR AVENUE, LOS ANGELES, CA 90008. TO COVER THE COST OF CONSTRUCTION INSPECTION AND RECORD PLANS.
8. IF WORK IS TO BE DONE IN A STATE HIGHWAY A PERMIT MUST BE OBTAINED FROM THE STATE OF CALIFORNIA, DIVISION OF HIGHWAYS, 100 SOUTH BRIDGE STREET, LOS ANGELES, CALIFORNIA.
9. APPROVAL OF THIS PLAN BY THE COUNTY OF LOS ANGELES DOES NOT CONSTITUTE A REPRESENTATION AS TO THE ACCURACY OF THE LOCATION OR OF THE EXISTENCE OR NON-EXISTENCE OF ANY UNDERGROUND UTILITY PIPE, OR STRUCTURE WITHIN THE LIMITS OF THIS PROJECT. THIS NOTE APPLIES TO ALL PAGES.
10. REFER TO SECTION 7.16.41 OF THE STANDARD SPECIFICATIONS, REGARDING SAFETY ORDERS.
11. PRIOR TO THE ISSUANCE OF THE REQUIRED SEWER CONSTRUCTION PERMIT, THE CONTRACTOR SHALL OBTAIN AND FILE WITH THE COUNTY ENGINEER COPIES OF A PERMIT TO EXCAVATE IN COUNTY STREETS FROM THE LOS ANGELES COUNTY ROAD DEPARTMENT, A PERMIT FOR EXCAVATIONS AND TRENCHES FROM THE STATE OF CALIFORNIA, DIVISION OF INDUSTRIAL SAFETY AND A CERTIFICATE OF WORKERS COMPENSATION INSURANCE WITH THE DEPARTMENT OF COUNTY ENGINEER, 800 SOUTH VERNOR, LOS ANGELES, CALIFORNIA 90008 NAMED AS THE CERTIFICATE HOLDER TO BE NOTIFIED 30 DAYS PRIOR TO CANCELLATION OF POLICY.

**CONSTRUCTION NOTES:**

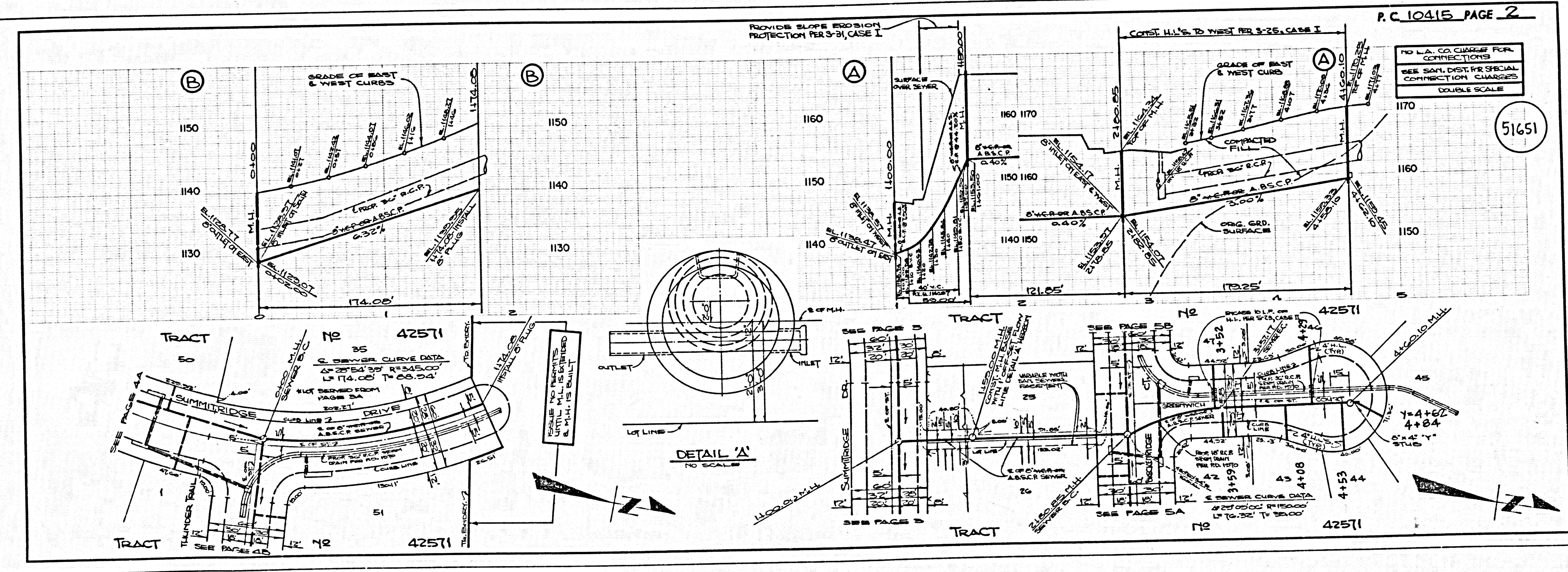
1. WORK SHALL BE CONSTRUCTED ACCORDING TO THE STANDARD SPECIFICATIONS FOR PUBLIC WORKS CONSTRUCTION (1985 EDITION) AND COUNTY ENGINEER SPECIAL PROVISIONS FOR THE CONSTRUCTION OF SANITARY SEWERS (REVISED EDITION) DATED SEPT. 21, 1978.
2. THE CONTRACTOR SHALL NOTIFY THE CONSTRUCTION DIVISION OF PUBLIC WORKS DEPT. TEL. (213) 226-8281 AT LEAST 24 HOURS BEFORE STARTING ANY WORK UNDER THIS CONTRACT.
3. HOUSE LATERALS TO BE CONSTRUCTED WITH INVERTS AT PROPERTY LINE 8 FEET BELOW CURB GRADE EXCEPT AS NOTED.
4. VYE OR TEE BRANCHES MAY BE USED FOR CONNECTIONS TO MAINLINE SEWERS EXCEPT AS NOTED.
5. ALL STRUCTURES SHALL BE EITHER 30" OR 36" CONCRETE MANHOLES PER S-3 OR PER S-3A EXCEPT AS NOTED.
6. PROVIDE STAKES ON THE PROPERTY LINE OR PROPERTY LINES PRODUCED AT RIGHT ANGLES TO THE SEWER LINE AT THE CENTER LINE OF EACH MANHOLE.
7. MANHOLE TOPS IN UNIMPROVED RIGHTS OF WAY TO BE 24 INCHES ABOVE FINISHED GRADE.
8. WYTHRED CLAY PIPE JOINTS SHALL BE TYPE 'D' OR 'E' PER STANDARD SPECIFICATIONS SECTION 308-2.
9. IF A POWER POLE IS WITHIN THREE FEET OF THE SEWER, THE SEWER SHALL BE ENCASED PER S-25 CASE R, TWO FEET ON EACH SIDE FROM THE POINT OF INTERFERENCE.
10. IF DURING THE COURSE OF CONSTRUCTION IT IS DETERMINED THAT THERE IS LESS THAN FOUR FEET OF COVER OVER THE TOP OF A MAIN LINE OR HOUSE LATERAL SEWER WHICH IS NOT INDICATED ON THE PLANS, THE PIPE SHALL BE ENCASED PER S-25 CASE R UNLESS OTHERWISE APPROVED BY THE COUNTY ENGINEER.
11. ALL JOINTS BETWEEN CAST IRON PIPE AND WYTHRED CLAY PIPE SHALL BE MADE WITH A RUBBER SLEEVE JOINT, TYPE 'C' OR 'D'.
12. JOINTS BETWEEN CAST IRON PIPE AND A-B-S. COMPOSITE PIPE SHALL BE MADE WITH STANDARD SPECIFICATIONS AND SPECIAL PROVISIONS.
13. REINFORCE ALL TRENCHES WITHIN PAVED AREAS TO MEET L.A. COUNTY ROAD DEPT. OR CALIFORNIA STATE HIGHWAY REQUIREMENTS IN ACCORDANCE WITH PERMITS.
14. FULL COMPLIANCE WITH SECTION 308-33 OF THE SPECIAL PROVISIONS WILL BE REQUIRED FOR BACKFILL IN STREETS. CERTIFICATION OF BACKFILL COMPOSITION AND PAID EQUIVALENTS BY A QUALIFIED, REGISTERED TESTING LABORATORY SHALL BE PROVIDED BY THE PERMITTEE PRIOR TO THE ISSUANCE OF A CERTIFICATE OF PARTIAL ACCEPTANCE.
15. SPECIAL BACKFILL IN EASEMENT CONSTRUCTION: (A) BACKFILL TRENCH AND REPLACE OTHER EARTH SO AS TO ACHIEVE THE ORIGINAL OR FINISHED GRADES AND SLOPES SHOWN ON THE GRADING PLAN APPROVED FOR THE DEVELOPMENT BY THE BUILDING AND SAFETY DIVISION; (B) ALL BACKFILL AND EARTH REPLACED SHALL BE COMPACTED TO A MINIMUM OF 90% OF MAXIMUM DENSITY PER A.S.T.M. METHOD OF TEST D9557 AS INDICATED; ACCEPTABLE CERTIFICATION OF SUCH COMPACTION SHALL BE SUBMITTED TO THE CONSTRUCTION DIVISION, PUBLIC WORKS DEPT.

**SANITARY SEWERS**  
 TO BE CONSTRUCTED IN  
**TRACT NO. 42571**  
 PRIVATE CONTRACT NO. 10415  
 U-149-H-182  
 W.S.  
 3 SHEETS, 5 PAGES  
 SCALE: VERT. 1"=4' HORIZ. 1"=40'  
 AUGUST, 1985  
 PREPARED IN THE OFFICES OF  
 LIND & HILLERUD, INC.  
 2055 HUNTINGTON DRIVE  
 SAN MARINO, CA 91108  
 BY: *J.H. GARRACINO*  
 REG. C.E. 19233

THE FOLLOWING LATEST REVISED STANDARD PLANS ON FILE IN THE OFFICE OF THE DEPARTMENT OF PUBLIC WORKS SHALL APPLY IN THE CONSTRUCTION OF THIS PROJECT:

SECTION	COUNTY A.P.W.A.
MINIMUM PERMITS REQUIREMENTS	S-1
30" SEWER MANHOLE	S-20
STANDARD MANHOLE RING	S-17
CHIMNEY AND ENCASING	S-28
WYE OR TEE BRANCH	S-29
ALLOWABLE TRENCH WIDTHS	S-26
LOADING MANHOLE FRAMES AND COVERS	S-25
NON-IMPACT POLYCARBONATE SEWER MANHOLE	S-20-C

COUNTY OF LOS ANGELES, CALIFORNIA  
 THOMAS A. TIDEHANSON, DIRECTOR  
 DEPARTMENT OF PUBLIC WORKS  
 APPROVED: *Thomas A. Tidehanson* DATE: 8/13/86  
 CHECKED: *F. J. ...* DATE: 8/13/86  
 SAN DIMAS BLDG. DIST. 10.0



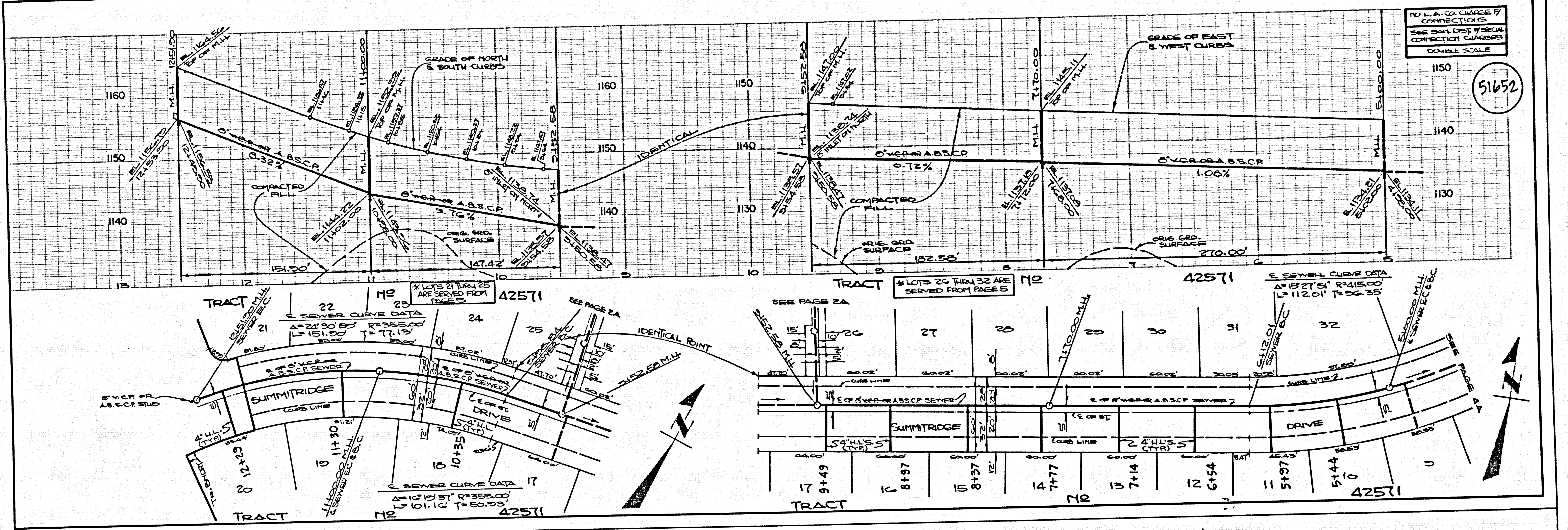
NO L.A. CO. CHARGE FOR CONNECTIONS  
 SEE SAN. DIST. FOR SPECIAL CONNECTION CHARGES  
 DOUBLE SCALE

TRACT NO. 42571  
 P.C. 10415 PAGE 2

51651

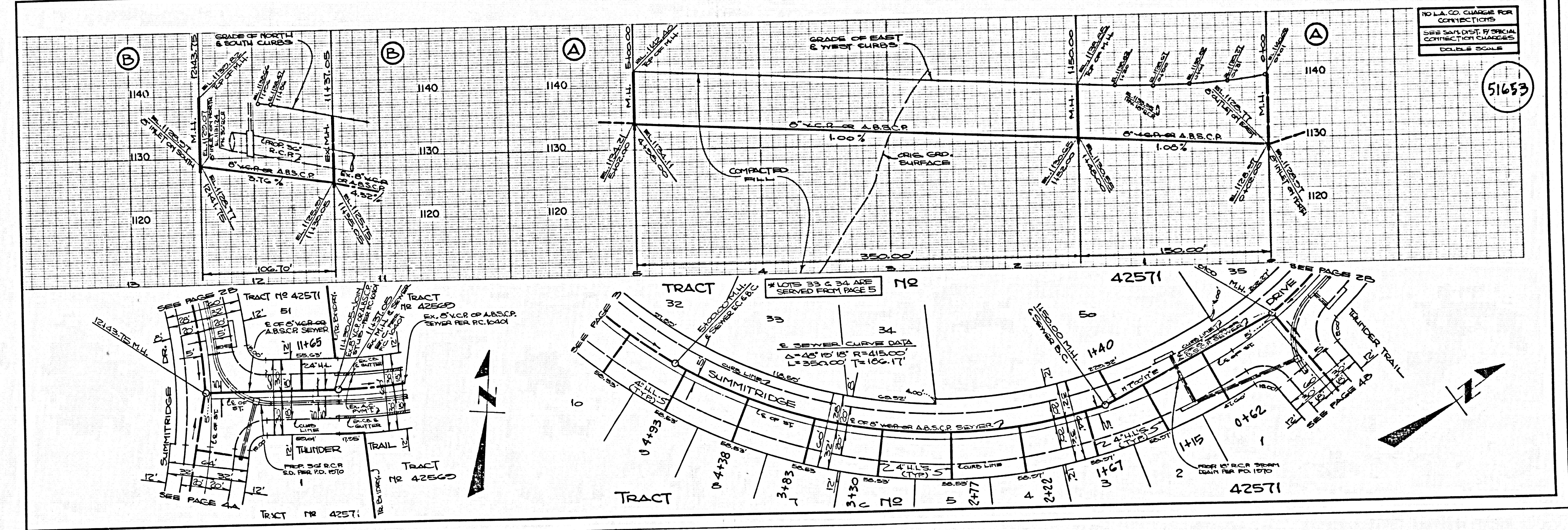
NO L.A. CO. CHARGE FOR CONNECTIONS  
SEE SAN. DIST. # SPECIAL CONNECTION CHARGES  
DOUBLE SCALE

51652



NO L.A. CO. CHARGE FOR CONNECTIONS  
SEE SAN. DIST. # SPECIAL CONNECTION CHARGES  
DOUBLE SCALE

51653

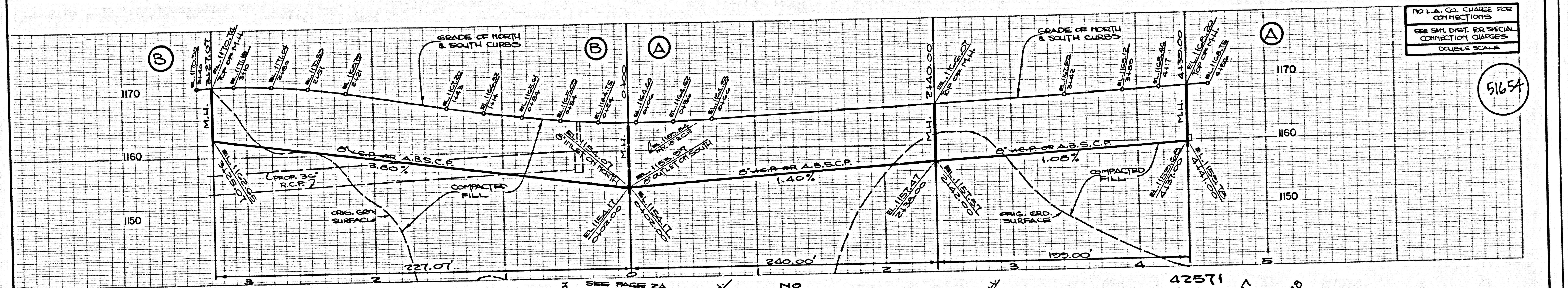


51601 39

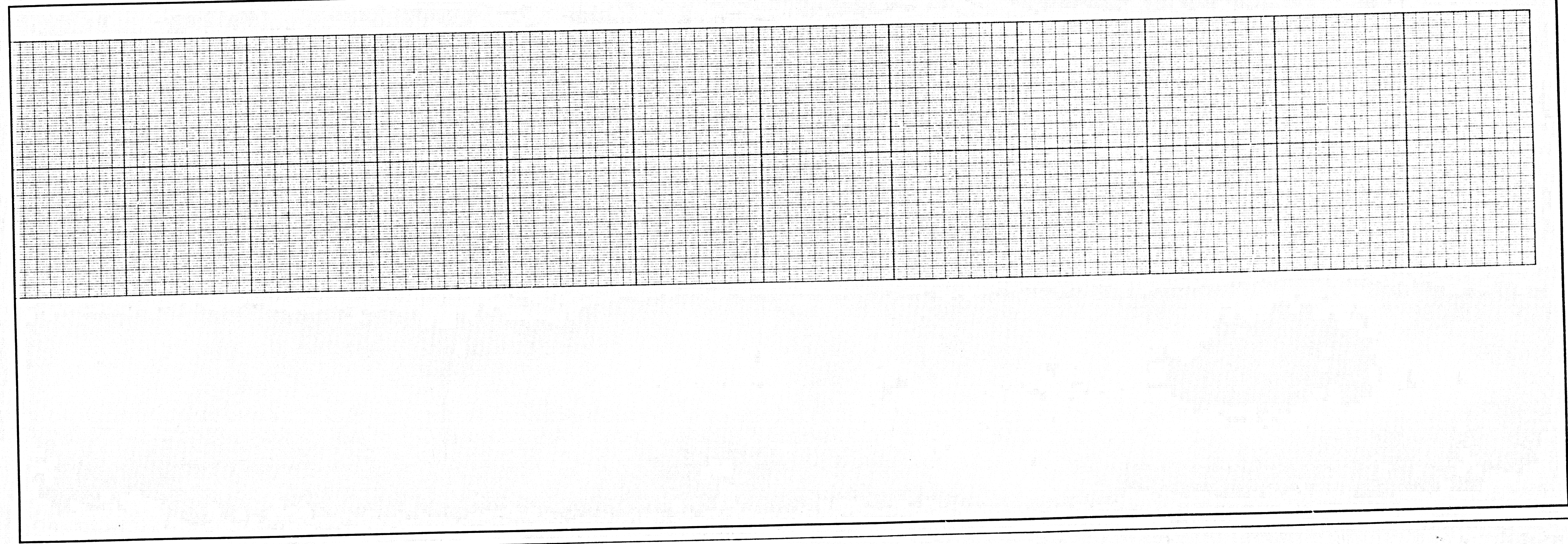
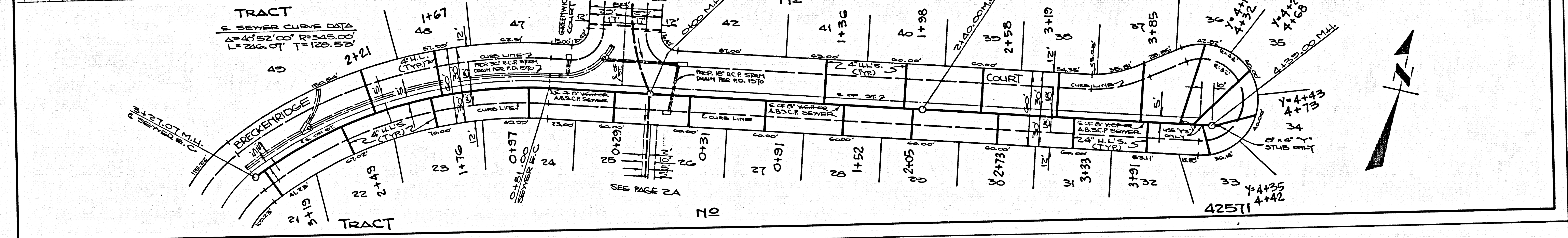
17554 94 TCAST

NO L.A. CO. CHARGE FOR CONNECTIONS  
SEE S&L DIST. FOR SPECIAL CONNECTION CHARGES  
DOUBLE SCALE

51654



TRACT  
 S SEWER CURVE DATA  
 $\Delta = 40.52' \text{ CO}' R = 245.00'$   
 $L = 246.07' T = 120.53'$



15A01 3E

17524 911 T2454T