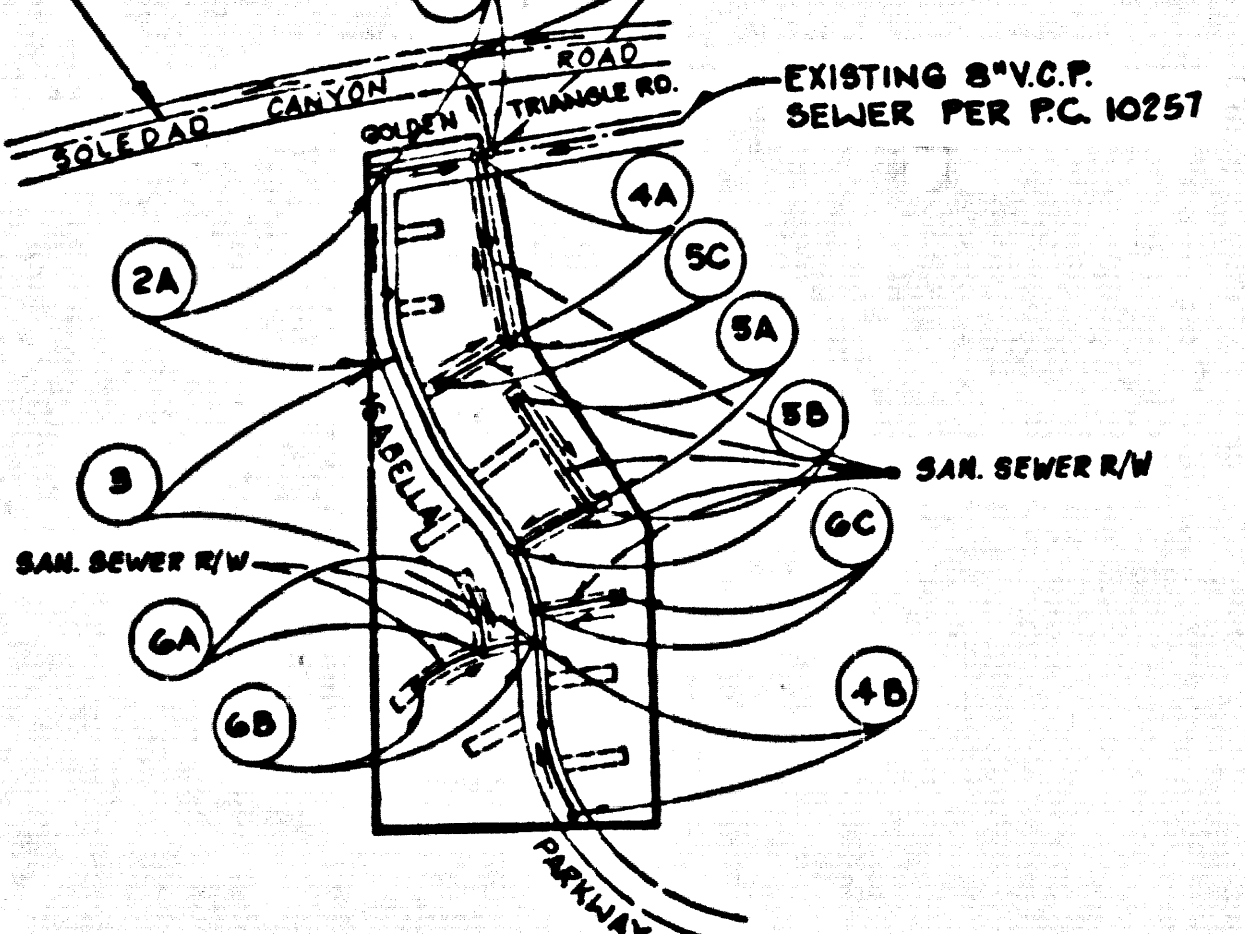


B.M. CL 4587 ELEV. 1327.098
 ROOM TAG IN CONC. BASE TRAFFIC LIGHT ON NW CORNER SOLEDAD CH RD & LANDSIDE AVE 43' N & 43' W C/L INT 15' ELY BCR
 NEWHP L QUAD. 19.7E.

NOTE: NUMBERS IN CIRCLES INDICATE PAGE NUMBERS

EXIST. 8" V.C.P. TRUCK SEWER PER SEC. 3 OF SAN. DIST. 26 TRUNK SEWER DWG. NO. 26-PB. 17, SHT. NO. 5

NOTE: SANITARY SEWERS ON PAGES 4A, 5A, 5B, 5C, 6A, 6B, 6C ARE IN SANITARY SEWER RIGHT OF WAY. LOT NO. 6 IS OPEN SPACE AND HOUSE LATERAL IS NOT NEEDED.



INDEX MAP
 TRACT NO. 43116
 P.C. NO. 10416
 SCALE: 1" = 600'

DOUBLE SCALE

CONSTRUCTION NOTES: (CONT.)

16. WVE BRANCHES ONLY MAY BE USED FOR CONNECTIONS TO 8" IN LINE SEWER IF R.B.S.C.P. IS USED.
17. ALL JOINT BETWEEN CAST IRON PIPE AND R.B.S.C.P. SHALL BE MADE WITH APPROVED FITTINGS.
18. FULL COMPLIANCE WITH PART IV OF THE SPECIAL PROVISIONS IS REQUIRED FOR THE INSTALLATION OF R.B.S. COMPOSITE PIPE AND R.B.S. SOLID WALL LATERALS.
19. MANHOLE INTERIOR STOP BRACKETS AND CLAMPS ARE REQUIRED FOR THE CONNECTION OF R.B.S. COMPOSITE PIPE TO MANHOLE STRUCTURES.
20. R.B.S. SOLID WALL PIPE MUST BE USED FOR WVE AND HOUSE LATERAL CONNECTIONS TO R.B.S. COMPOSITE MANHOLE SEWER PIPE.
21. 3' DEGREE DEFLECTION COEFFICIENTS SHOULD BE USED TO ACCOMPLISH RADIUS OF CURVATURE LESS THAN 300'.
22. R.B.S. COMPOSITE PIPE SHALL BE BEDDED IN CONFORMANCE WITH THE TABLE IN SECTION B-51 OF PART IV OF SPECIAL PROVISIONS.

NO CONNECTION FOR THE DISPOSAL OF INDUSTRIAL WASTES SHALL BE MADE TO SEWERS SHOWN ON THESE DRAWINGS UNTIL A PERMIT FOR INDUSTRIAL WASTEWATER DISCHARGE HAS BEEN ISSUED BY THE SANITATION DISTRICTS FOR SAID CONNECTION.

BEFORE BREAKING IPTO OR CONSTRUCTION ON A COUNTY SANITATION DISTRICT SEWER AND PRIOR TO FINAL ACCEPTANCE OF THE PROJECT, SANITATION DISTRICT INSPECTOR SHALL BE NOTIFIED BY PHONE 818-962-8605 SO THAT REQUIRED INSPECTION CAN BE MADE.

REVISION NO. 1 DATE 10/29/81
 ADD 6" HOUSE LATERAL AT STA 13420 ON PAGE 3 TO LOT 4
 APPROVED *[Signature]*
 DEPT. OF PUBLIC WORKS

GENERAL NOTES:

1. ELEVATIONS ARE IN FEET ABOVE U.S.C. & G.S. SEA LEVEL DATUM OF 1988.
2. NO REVISIONS SHALL BE MADE IN THESE PLANS WITHOUT THE APPROVAL OF THE COUNTY ENGINEER.
3. ORDER TO WHICH THIS IMPROVEMENT IS TO BE CONSTRUCTED ARE SHOWN ON PLANS AND PROFILES. GRADE POINTS FOR TOP OF CURBS, CENTER LINE OF STREETS, OR CENTER LINE OF ALLEYS ARE SHOWN BY CIRCLES ON PROFILES AT ALL POINTS BETWEEN DESIGNATED POINTS. THE GRADE SHALL BE ESTABLISHED SO AS TO CONFORM TO A STRAIGHT LINE DRAWN BETWEEN SAID DESIGNATED POINTS.
4. THE PRIVATE ENGINEER SHALL FURNISH THE COUNTY ENGINEER WITH GRADE SHEETS AND STATIONING FOR ALL HOUSE LATERALS AND "Y" OR "T" BRANCHES AND SHALL PROVIDE STAKES FOR THEM AT THEIR ORIGINAL LOCATIONS WITH STATIONING PLAINS MARKED. ALL HOUSE LATERALS SHALL BE PROVIDED WITH A 3" MIN. INT. ALIGNMENT AT RIGHT ANGLES FROM THE MAIN LINE SEWER EXCEPT AS SHOWN ON THE PLANS. HOUSE LATERALS FROM CHIMNEYS SHALL NOT HAVE AN ANGLE OF LESS THAN 45° WITH THE MAIN LINE SEWER. ANY CHANGE IN ALIGNMENT SHALL BE REQUESTED IN WRITING BY THE PRIVATE ENGINEER.
5. THE PRIVATE ENGINEER SHALL FURNISH THE HOUSE LATERAL DEPTH AT THE PROPERTY LINE BELOW THE TOP OF CURB ELEVATION FOR EACH HOUSE LATERAL ON THE GRADE SHEET.
6. BEFORE WORK CAN BE STARTED, THE CONTRACTOR MUST OBTAIN A PERMIT TO EXCAVATE IN COUNTY STREETS FROM THE L.A. COUNTY ROAD DEPT., DISTRICT OFFICE NO. 8 AND PAY A FEE TO THE COUNTY ENGINEER, 800 S. VERMONT AVENUE, LOS ANGELES, CA 90020, TO COVER THE COST OF CONSTRUCTION INFORMATION AND RECORD PLANS.
7. IF WORK IS TO BE DONE IN A STATE HIGHWAY RIGHT-OF-WAY, A PERMIT MUST BE OBTAINED FROM THE STATE OF CALIFORNIA, DIVISION OF HIGHWAYS, 1600 SOUTH STREETS, LOS ANGELES, CALIFORNIA.
8. APPROVAL OF THIS PLAN BY THE COUNTY OF LOS ANGELES DOES NOT CONSTITUTE A REPRESENTATION AS TO THE ACCURACY OF THE LOCATION OR THE EXISTENCE OR NON-EXISTENCE OF ANY UNDERGROUND UTILITY PIPE OR STRUCTURE WITHIN THE LIMITS OF THIS PROJECT. THIS NOTE APPLIES TO ALL PAGES.
9. REFER TO SECTION 116(A) OF THE STANDARD SPECIFICATIONS, REGARDING SAFETY ORDERS.
10. PRIOR TO THE ISSUANCE OF THE REQUIRED SEWER CONSTRUCTION PERMIT, THE CONTRACTOR SHALL OBTAIN AND FILE WITH THE COUNTY ENGINEER COPIES OF A PERMIT TO EXCAVATE IN COUNTY STREETS FROM THE LOS ANGELES COUNTY ROAD DEPARTMENT, A PERMIT FOR EXCAVATIONS AND TRENCHES FROM THE STATE OF CALIFORNIA, DIVISION OF PUBLIC SAFETY AND CERTIFICATE OF WORKER'S COMPENSATION INSURANCE WITH THE COUNTY ENGINEER, 300 SOUTH VERMONT AVENUE, LOS ANGELES, CALIFORNIA 90020, NAMED AS THE CERTIFICATE HOLDER TO BE NOTIFIED 30 DAYS PRIOR TO CANCELLATION OF POLICY.

CONSTRUCTION NOTES:

1. WORK SHALL BE CONSTRUCTED ACCORDING TO THE STANDARD SPECIFICATIONS FOR PUBLIC WORKS CONSTRUCTION 1985 EDITION AND SHALL BE PROSECUTED ONLY IN THE PRESENCE OF THE COUNTY ENGINEER.
2. THE CONTRACTOR SHALL NOTIFY THE CONSTRUCTION DIVISION BY TELEPHONE 726-2146 AT LEAST TWENTY FOUR HOURS BEFORE STARTING ANY WORK UNDER THIS CONTRACT.
3. HOUSE LATERALS TO BE CONSTRUCTED WITH INVERTS AT PROPERTY LINE 8 FEET BELOW CURB GRADE EXCEPT AS NOTED.
4. WVE OR TEE BRANCHES MAY BE USED FOR CONNECTIONS TO MAIN LINE SEWERS EXCEPT AS NOTED.
5. ALL STRUCTURES SHALL BE EITHER BRICK MANHOLES PER S-3 OR PRECAST CONCRETE MANHOLES PER S-36 EXCEPT AS NOTED.
6. PROVIDE STAKES ON THE PROPERTY LINE OR PROPERTY LINES PRODUCED AT RIGHT ANGLES TO THE SEWER LINE AT THE CENTER LINE OF EACH MANHOLE.
7. MANHOLE TOPS IN UNIMPROVED AREAS OF WAY TO BE SIX INCHES ABOVE FINISHED GRADE.
8. VITRIFIED CLAY PIPE JOINTS SHALL BE TYPE "D" OR "Q" PER STANDARD SPECIFICATIONS SECTION 308.2.
9. IF A POWER POLE IS WITHIN THREE FEET OF THE SEWER, THE SEWER SHALL BE ENCASED, PER S-23 CASE II, TWO FEET ON EACH SIDE FROM THE POINT OF INTERFERENCE.
10. IF DURING THE COURSE OF CONSTRUCTION IT IS DETERMINED THAT THERE IS LESS THAN FOUR FEET OF COVER OVER THE TOP OF A MAIN LINE OR HOUSE LATERAL SEWER WHICH IS NOT INDICATED ON THE PLANS, THE PIPE SHALL BE ENCASED PER S-23 CASE II UNLESS OTHERWISE APPROVED BY THE COUNTY ENGINEER.
11. ALL JOINTS BETWEEN CAST IRON PIPE AND VITRIFIED CLAY PIPE SHALL BE MADE WITH A RUBBER SLEEVE JOINT, TYPE "C" OR "D" WITH BUSHING IF NECESSARY PER STANDARD SPECIFICATIONS SECTION 308.2.
12. SEWERS TO BE TESTED FOR LEAKAGE PER SECTION 308-1.4 OF THE STANDARD SPECIFICATIONS AND SPECIAL PROVISIONS.
13. RESURFACE ALL TRENCHES WITHIN PAVED AREAS TO MEET L.A. COUNTY ROAD DEPT. OR CALIFORNIA STATE HIGHWAY REQUIREMENTS IN ACCORDANCE WITH PERMITS.
14. FULL COMPLIANCE WITH SECTION 308-1.35 OF THE SPECIAL PROVISIONS WILL BE REQUIRED FOR BACKFILL IN STREETS. CERTIFICATION OF BACKFILL COMPACTION AND SAND EQUIVALENTS BY A QUALIFIED REGISTERED TESTING LABORATORY SHALL BE PROVIDED BY THE PERMITTEE PRIOR TO THE ISSUANCE OF A CERTIFICATE OF PARTIAL ACCEPTANCE.
15. SPECIAL BACKFILL IN EASEMENT CONSTRUCTION: (A) BACKFILL TRENCH AND REPLACE OTHER EARTH SO AS TO ACHIEVE THE NATURAL OR FINISHED GRADES AND SLOPES SHOWN ON THE GRADING PLAN APPROVED FOR THIS PROJECT BY THE BUILDING AND SAFETY DIVISION. (B) ALL BACKFILL AND EARTH REPLACED SHALL BE COMPACTED TO A MINIMUM OF 90% OF MAXIMUM DENSITY PER A.S.T.M. STD. METHOD OF TEST D998-57. (C) MODIFIED, ACCEPTABLE CERTIFICATION OF SUCH COMPACTION SHALL BE SUBMITTED TO THE CONSTRUCTION DIVISION.

PROFILE, ALIGNMENT AND GRADE OF
SANITARY SEWERS
 TO BE CONSTRUCTED IN
TRACT NO. 43116
 PRIVATE CONTRACT NO. 10416

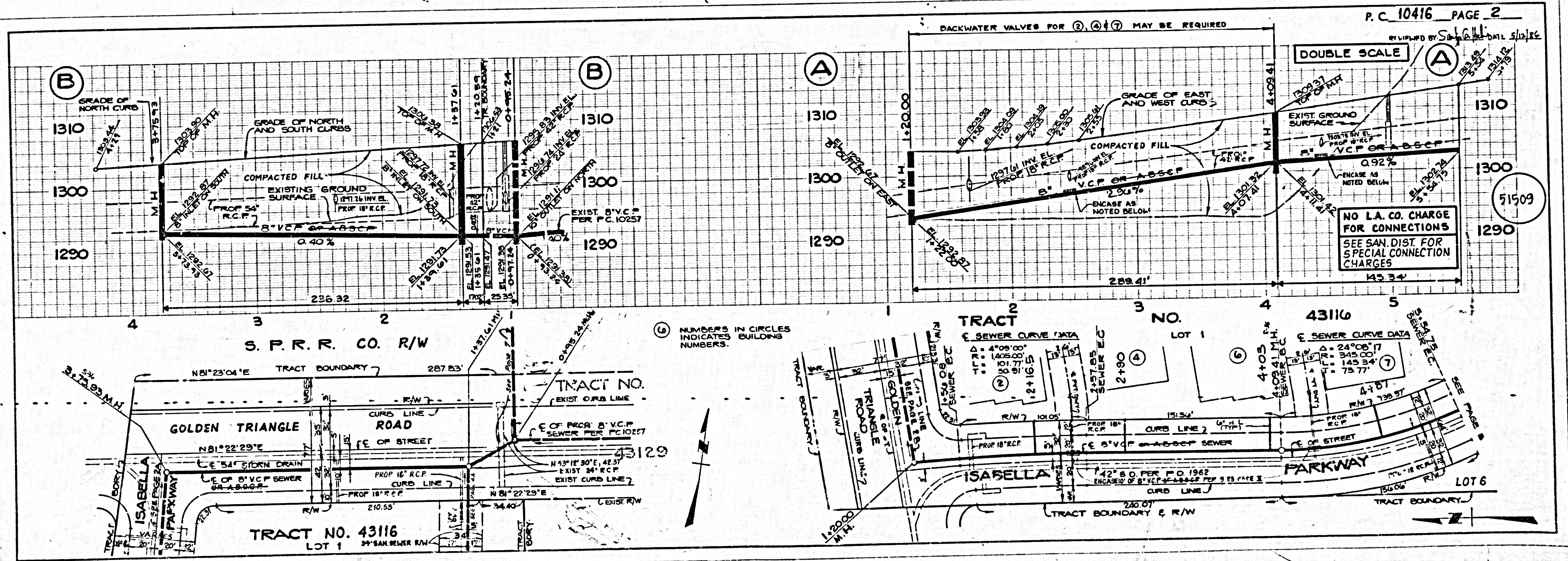
W.S. A-61-D-2
 4 SHEETS, 7 PAGES

SCALE: VERT. 1" = 4'
 HORIZ. 1" = 60'
 AUGUST, 1985
 PREPARED IN THE OFFICES OF
ENGINEERING SERVICE CORPORATION
 5011 WILSON BLVD., SUITE 100
 CULVER CITY, CALIF. 90230
 BY: *[Signature]*
 REG. C.E. NO. 13035

THE FOLLOWING LATEST REVISED STANDARD PLANS ON FILE IN THE OFFICE OF THE DEPARTMENT OF PUBLIC WORKS SHALL APPLY IN THE CONSTRUCTION OF THIS PROJECT.

LEGEND	5-1
MINIMUM PUBLIC SAFETY REQUIREMENTS	5-2
BRICK SEWER MANHOLE	5-3
STANDARD MANHOLE STOP	5-4
BRICK FOR SEWER PIPE	5-5
CRADLING AND ENCASEMENT	5-6
WVE OR TEE SUPPORT	5-7
ALLOWABLE TRENCH WIDTHS	5-8
LOCKING MANHOLE FRAMES AND COVERS	5-9
NON-REINFORCED PRECAST CONCRETE SEWER MANHOLE	5-10

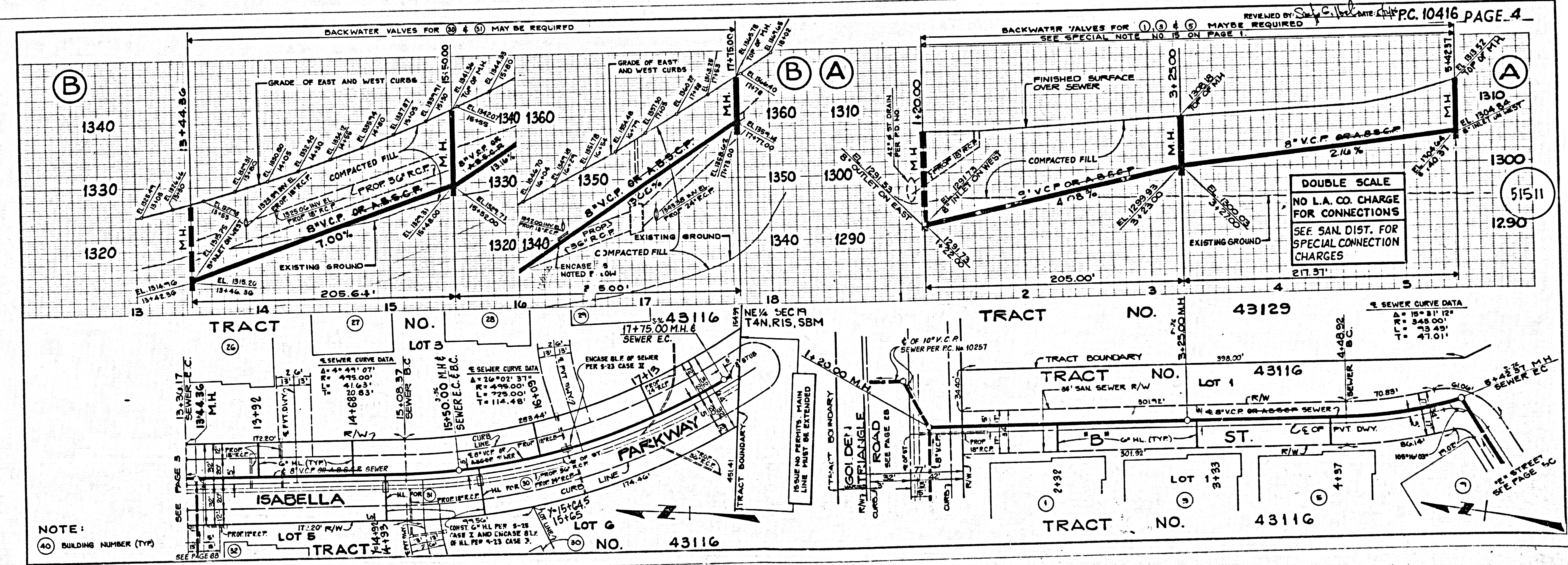
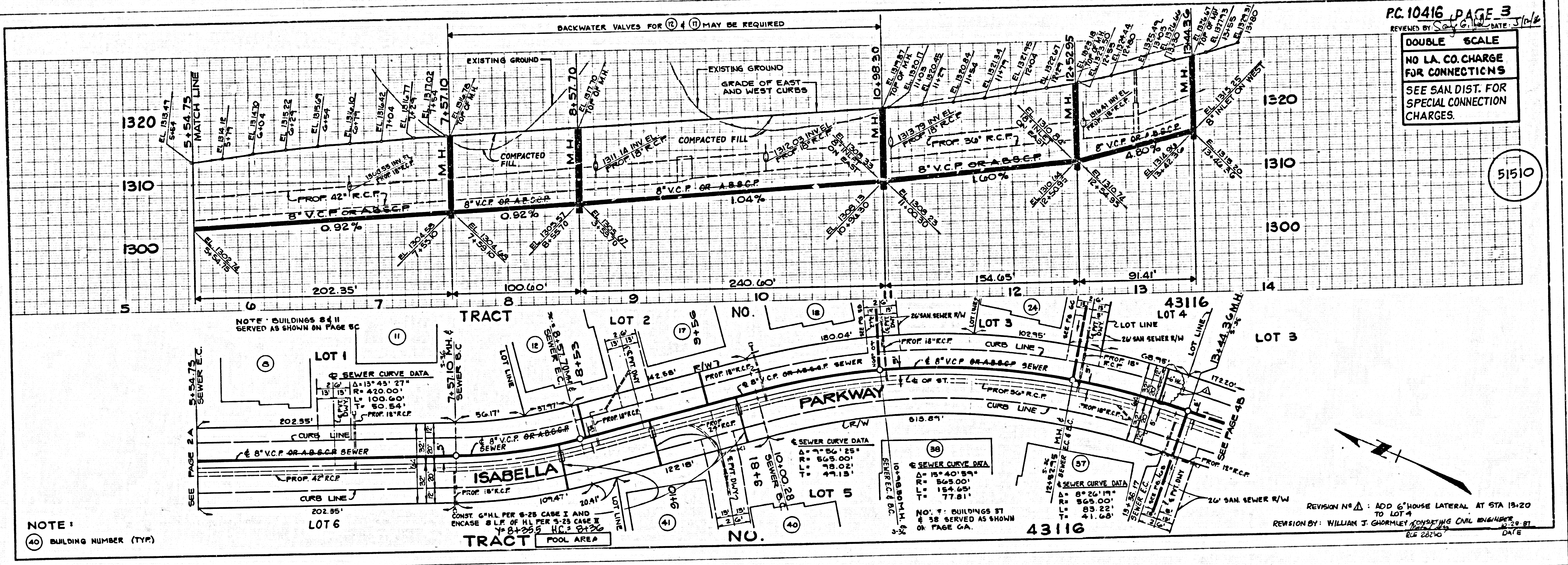
COUNTY OF LOS ANGELES, CALIFORNIA
 THOMAS A. TIDEHAWSON, DIRECTOR OF PUBLIC WORKS
 CHARLES AL CARRY, CHIEF ENGINEER
 APPROVED *[Signature]* 5/14/86
 CHECKED *[Signature]* 5/15/86
 REG. C.E. NO. 16841
 SANTA CLARITA VALLEY BLDG. DIST. 82



1

TRACT NO. 43116

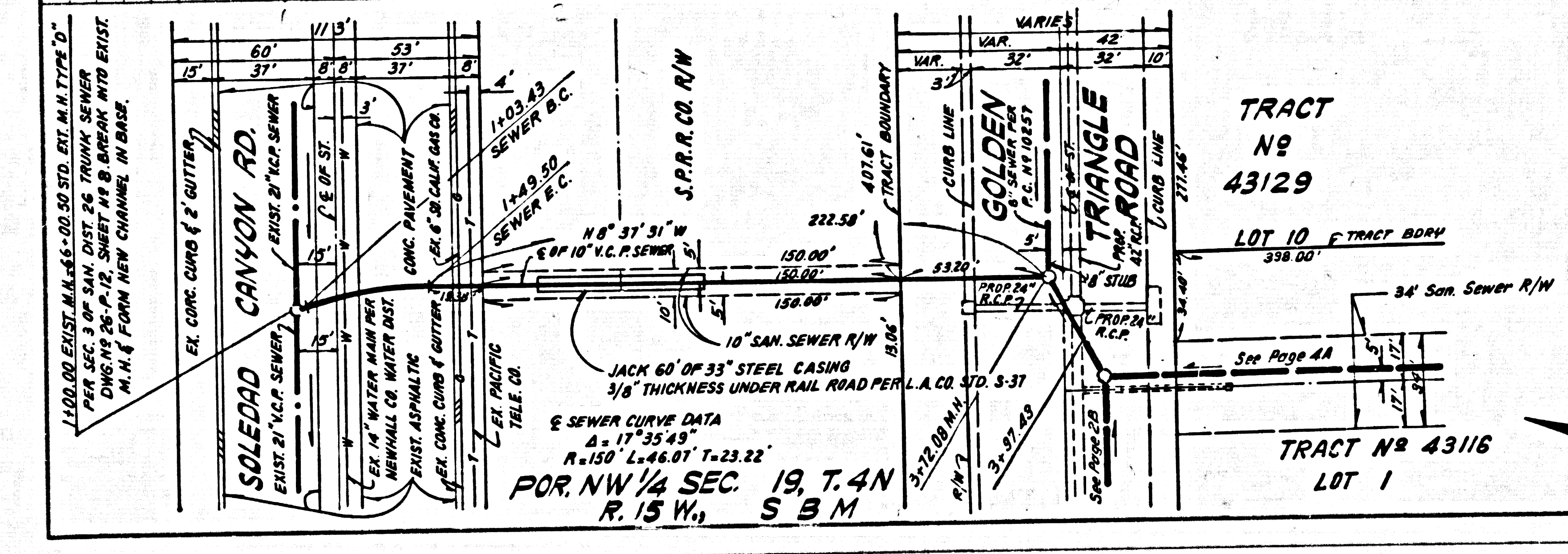
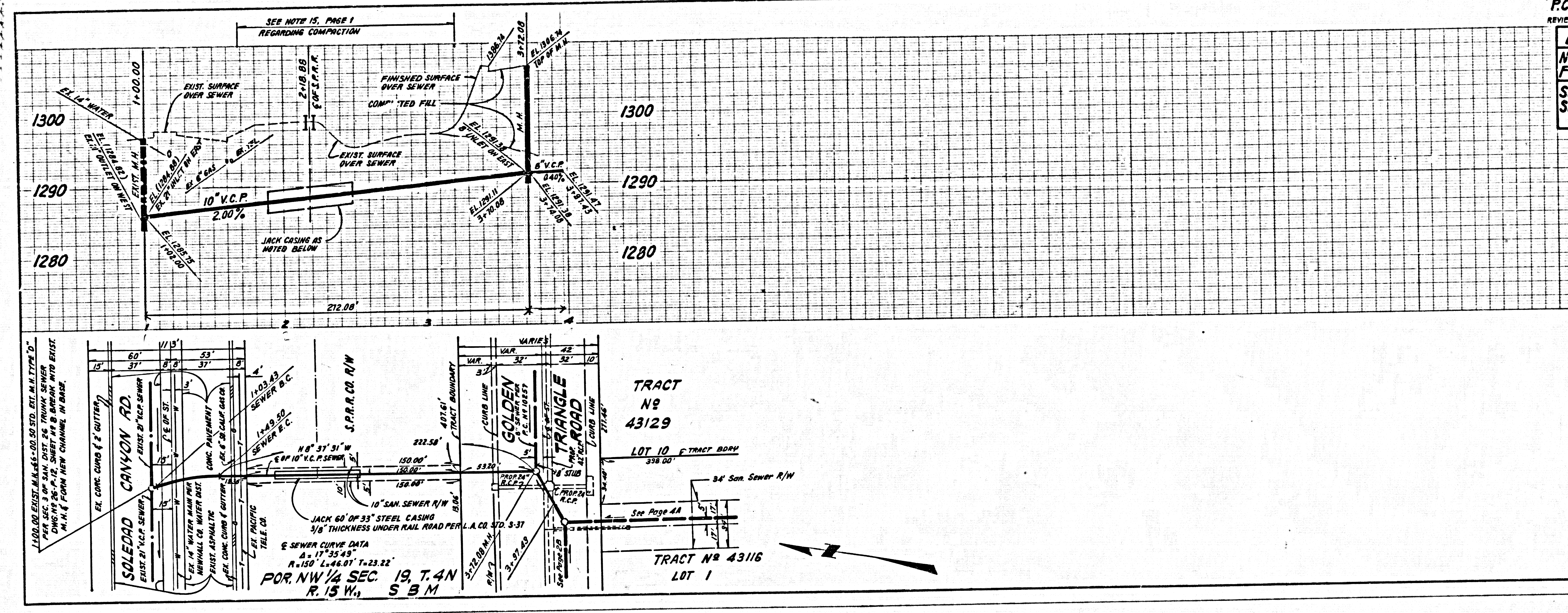
51509



0101 09 0114 9M TCA9T

DOUBLE SCALE
NO L.A. CO. CHARGE
FOR CONNECTIONS
SEE SAN. DIST. FOR
SPECIAL CONNECTION
CHARGES

51514



TRACT
Nº
43129

LOT 10

TRACT Nº 43116
LOT 1