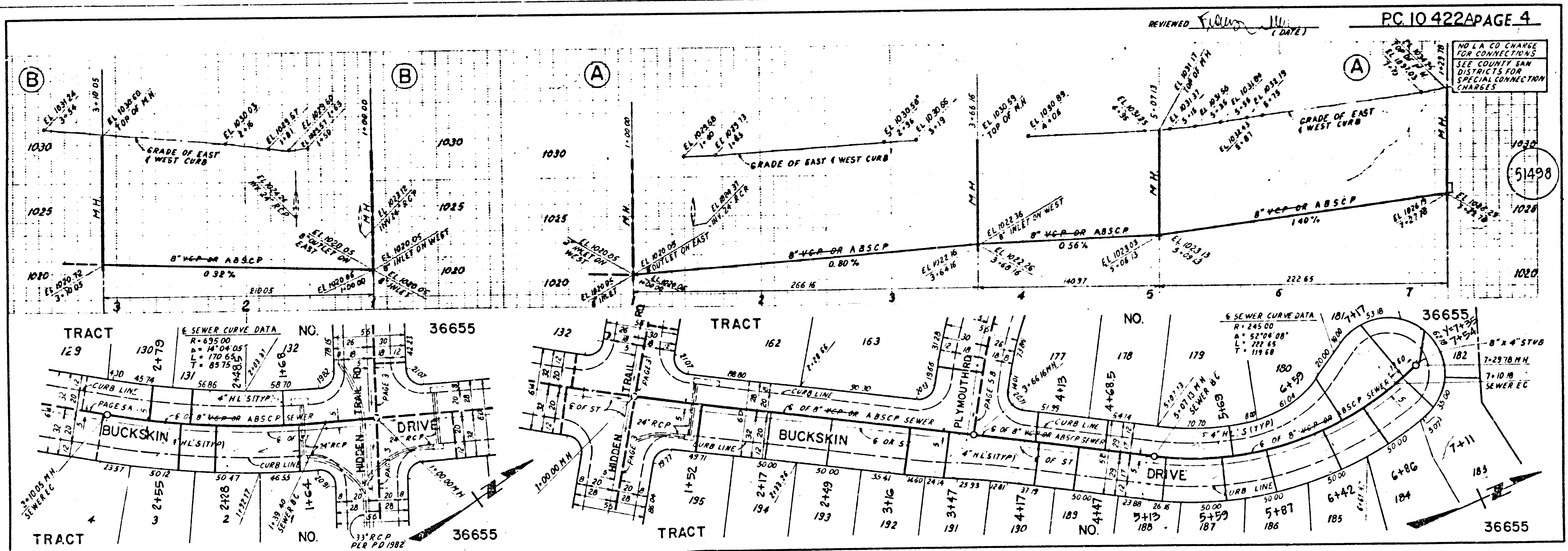
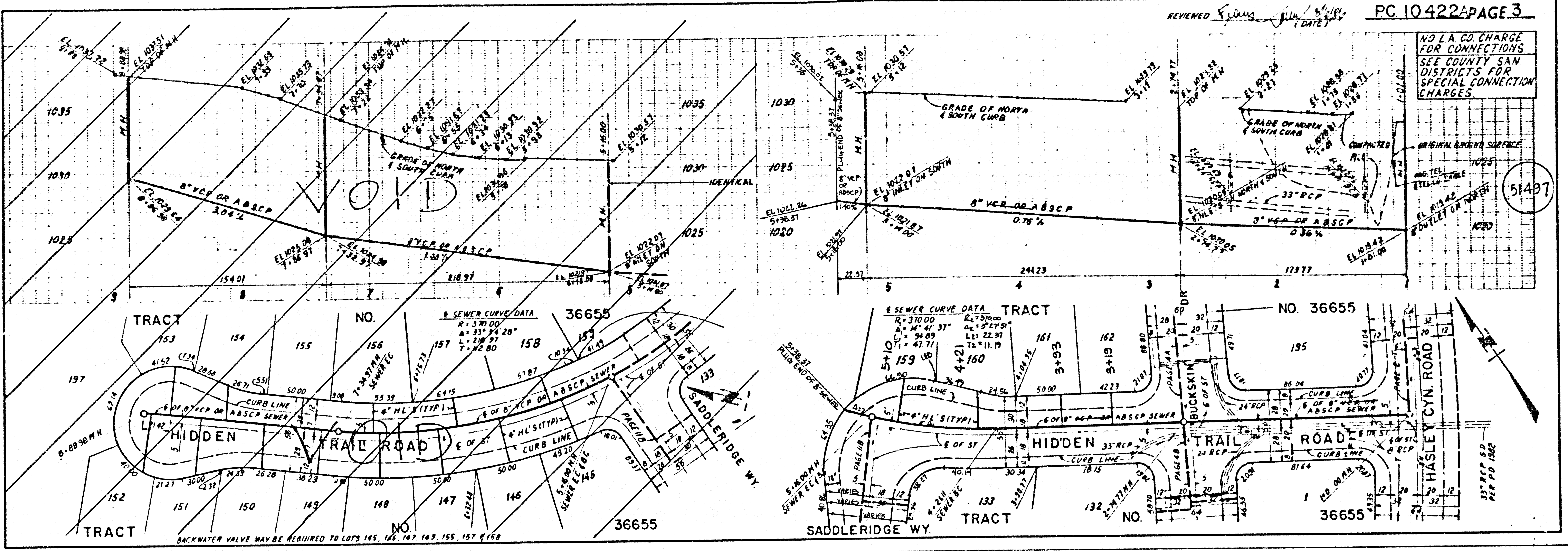






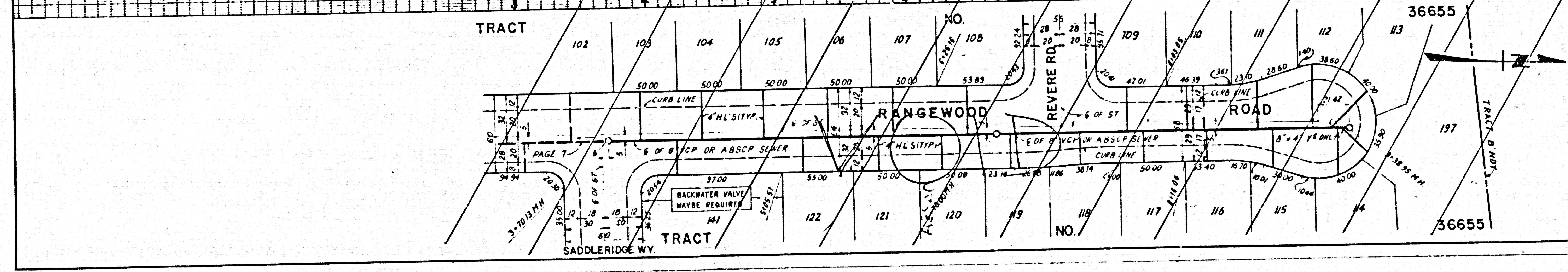
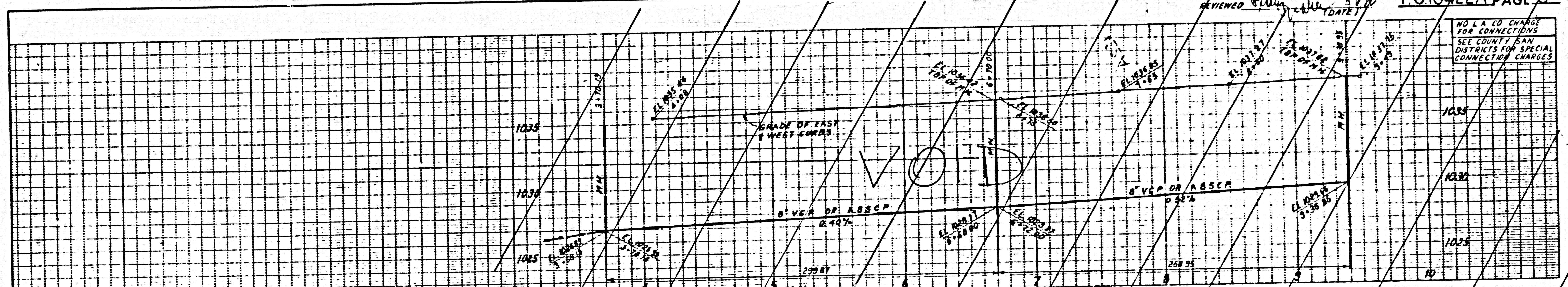
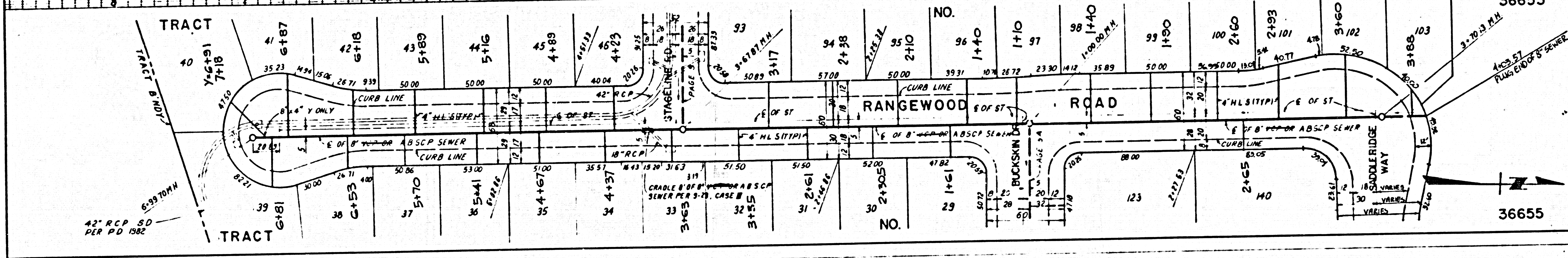
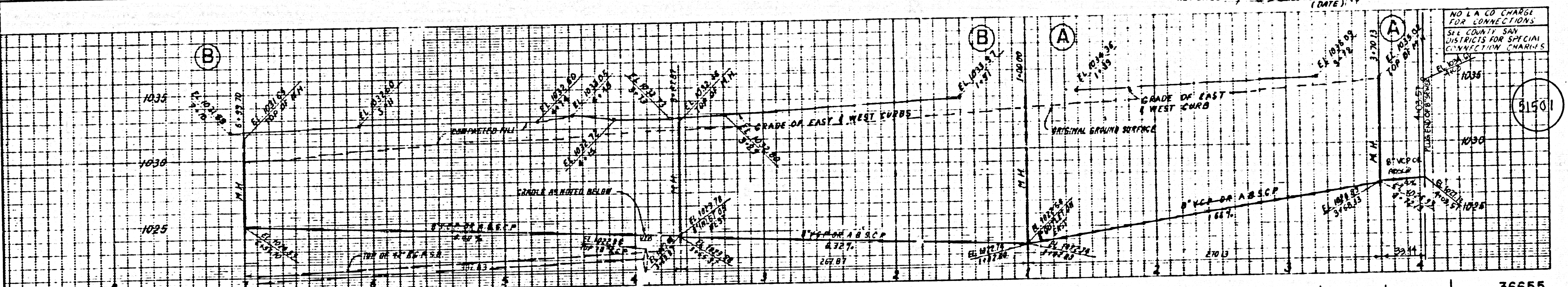
SASSP 0129











CLASS 01 39

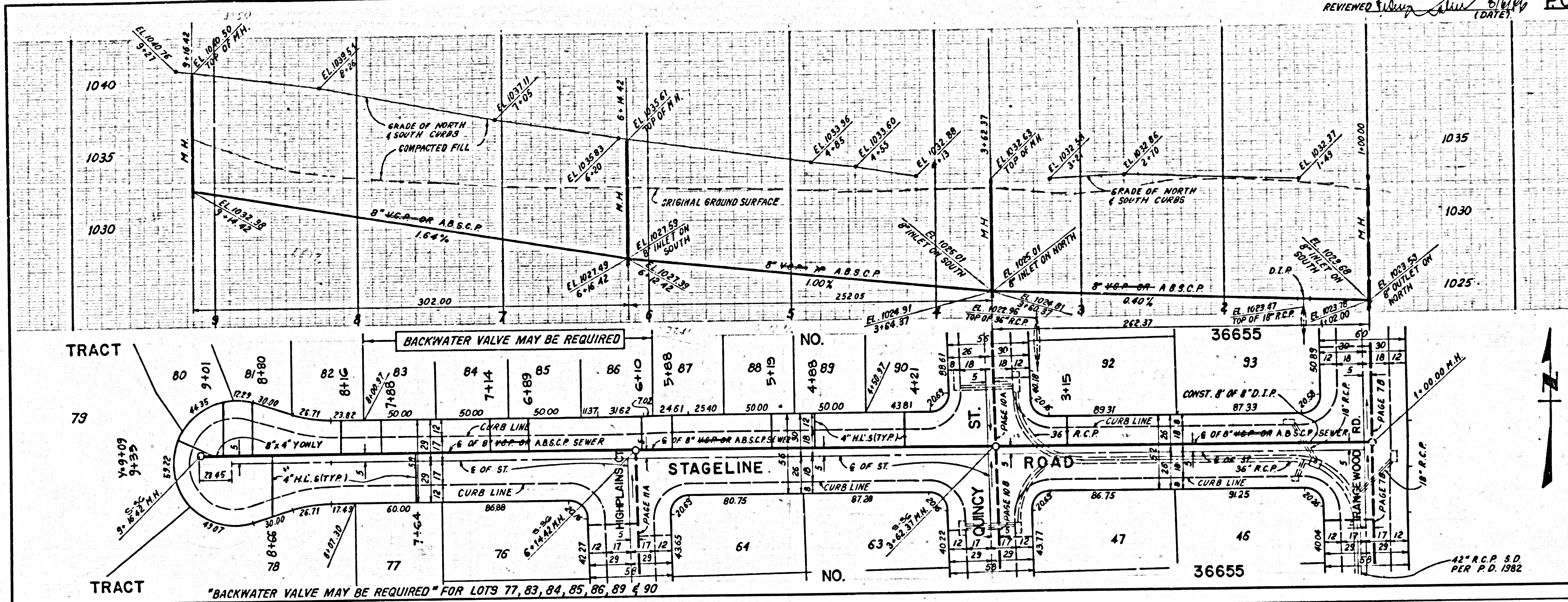


REVIEWED *[Signature]* *[Date]*

NO L.A. CO CHARGE FOR CONNECTIONS SEE COUNTY SAN DISTRICTS FOR SPECIAL CONNECTION CHARGES

51502

SSA 10 422

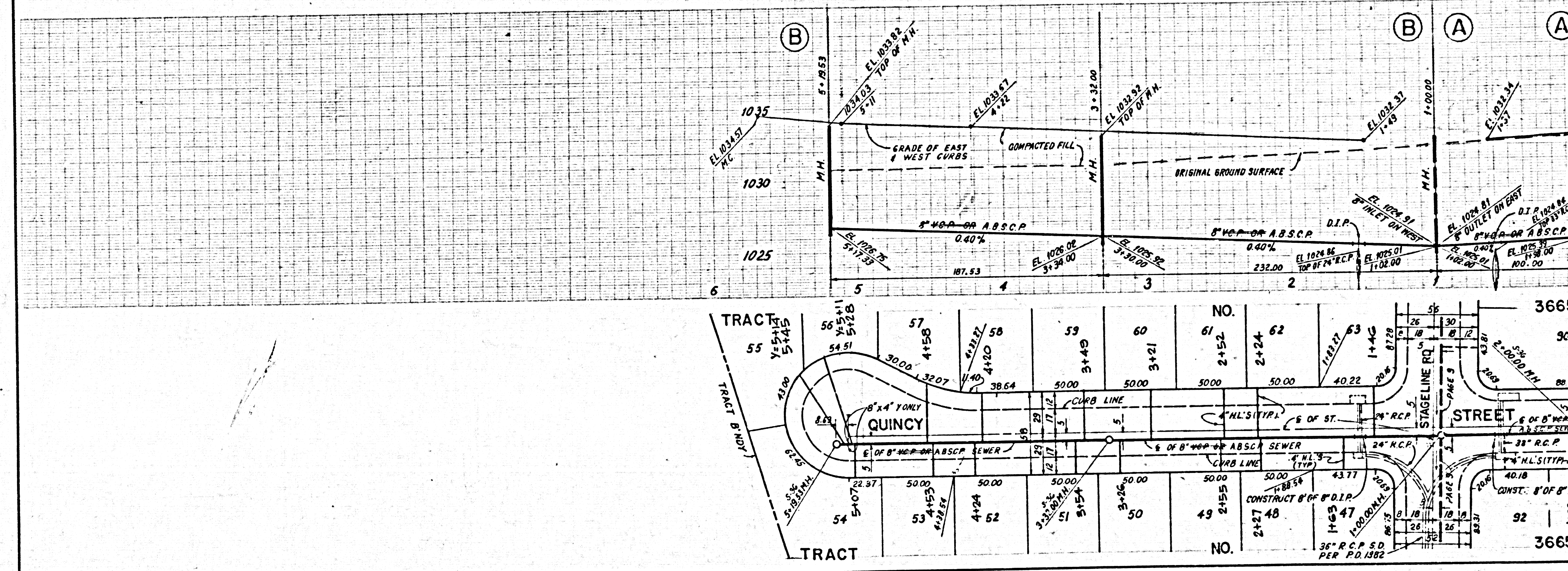


"BACKWATER VALVE MAY BE REQUIRED" FOR LOTS 77, 83, 84, 85, 86, 89 & 90

REVIEWED *[Signature]* *[Date]*

NO L.A. CO CHARGE FOR CONNECTIONS SEE COUNTY SAN DISTRICTS FOR SPECIAL CONNECTION CHARGES

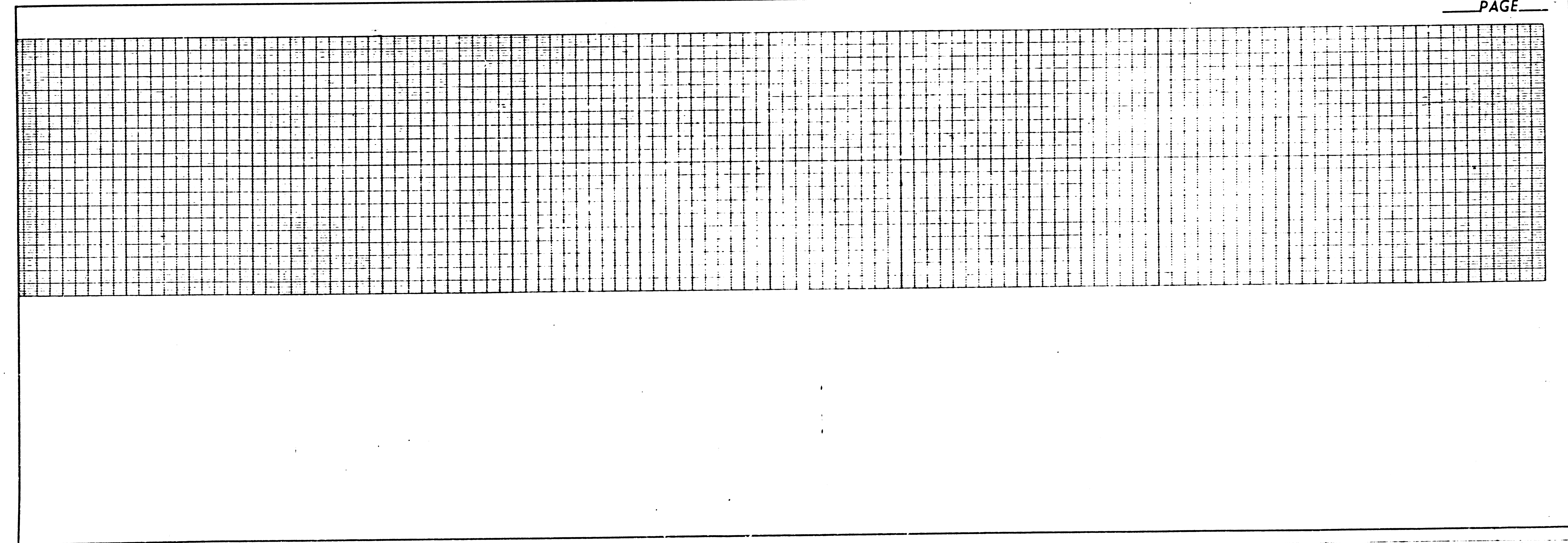
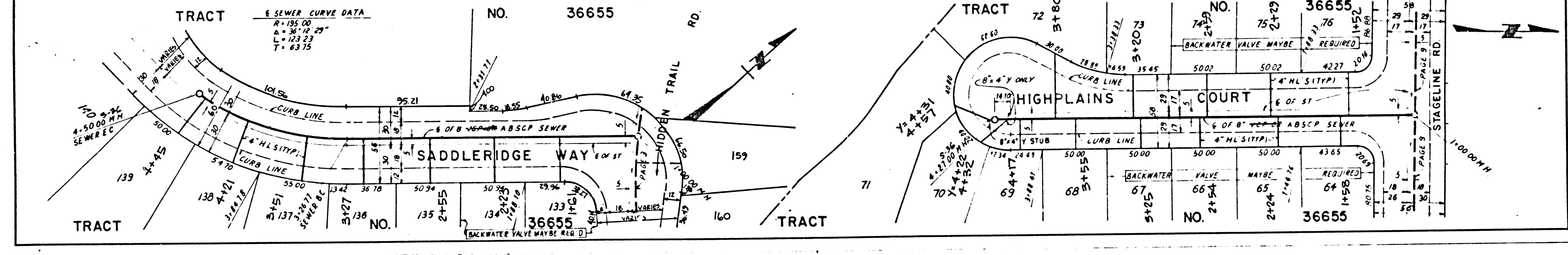
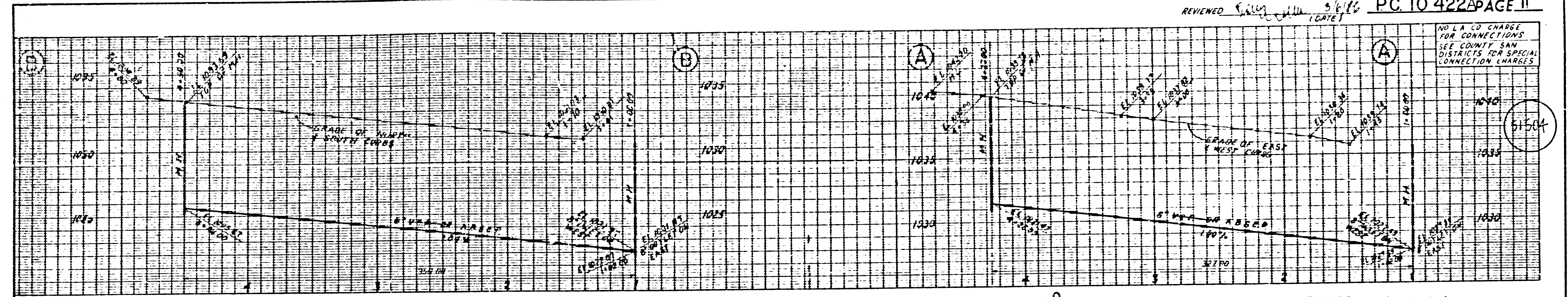
51503



ISSUE NO PERMITS. M.H. MUST BE EXTENDED



NO L.A. CO CHARGE FOR CONNECTIONS. SEE COUNTY SAN DISTRICTS FOR SPECIAL CONNECTION CHARGES.



©ASSP 01 39