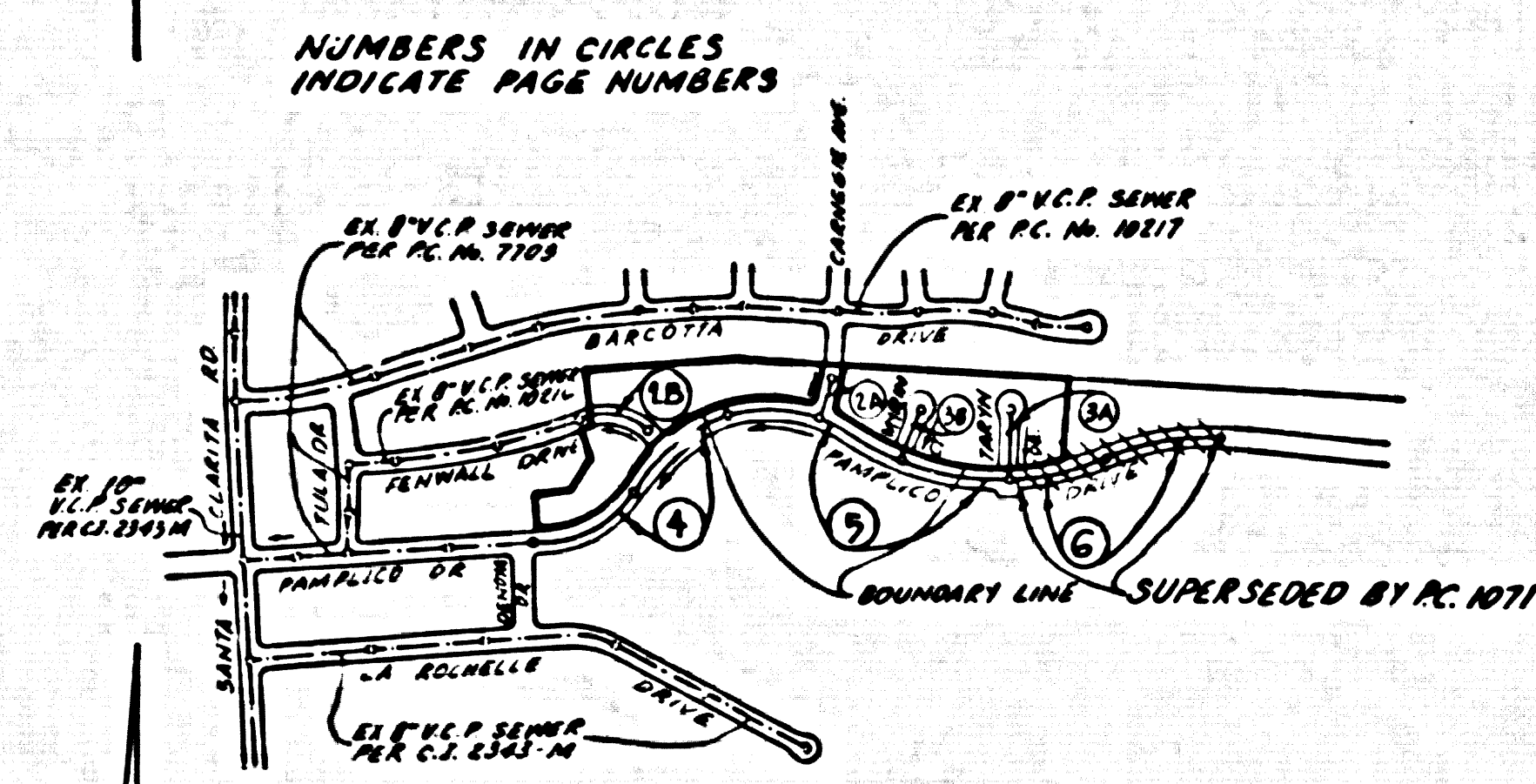


B.M. CL 425 ELEV 1203.433  
 4 1/2" N.P. B.C.P. @ SE COR. OF E SERVICE  
 RD OF SECO CYN CL RD PAMPILLO DR  
 45 FT 5 1/2" IN FT & C/L MKD (B.M. EV)  
 MENHALL QUAD. 19 78

DOUBLE VERTICAL SCALE



INDEX MAP  
 SCALE 1" = 600'  
 TRACT No. 43517

P.C. 10435

NO.	DATE	REVISION
11-14-87		REVISED LATERALS TO LOTS 1, 2, 3 OF P.M. NO. 11405 TO 6" (INCL. 4 1/2") APPROVED CHANGED BY G. H. BELT
11-14-87		ADD N.L. FOR PARCEL 8, P.M. NO. 11405 ON PAGE 8. RELOCATED N.L. FOR PARCEL 9 P.M. NO. 11405 FROM PAGE 4 TO PAGE 8. APPROVED BY G. H. BELT 11-14-87
1-27-89		REVISION NO. 3 OCTOBER 28, 1988 PAGE 8: DELETE SEWER SYSTEM FROM STA. 25+78.45 TO STA. 25+50.00 ALIGNMENT REVISED PER TRACT NO. 43517 P.C. 10717 APPROVED BY G. H. BELT 1-27-89

ISSUE NO HOUSE LATERAL CONNECTIONS TO LOTS 1, 2, 3, 4, 5, 6, 7, 8, 9, 10, 11, 12, 13, 14, 15 WITHIN DISTRICT P.C. 10435 IS ACCEPTABLE FOR PUBLIC USE.

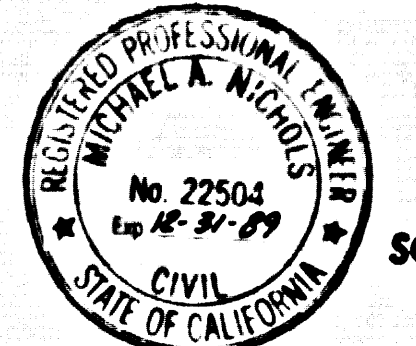
NO CONNECTION FOR THE DISPOSAL OF INDUSTRIAL WASTES SHALL BE MADE TO SEWERS SHOWN ON THESE DRAWINGS UNTIL A PERMIT FOR INDUSTRIAL WASTEWATER DISCHARGE HAS BEEN ISSUED BY THE SANITATION DISTRICTS FOR SAID CONNECTION.

BEFORE BREAKING INTO OR CONSTRUCTION ON A COUNTY SANITATION DISTRICT SEWER AND PRIOR TO FINAL ACCEPTANCE OF THE PROJECT, SANITATION DISTRICT INSPECTOR SHALL BE NOTIFIED BY PHONE (310) 962-8605 SO THAT REQUIRED INSPECTION CAN BE MADE.

GENERAL NOTES:  
 1. ELEVATIONS ARE IN FEET ABOVE U.S.C. & G.S. MEAN LEVEL DATUM OF 1988.  
 2. NO REVISIONS SHALL BE MADE IN THESE PLANS WITHOUT THE APPROVAL OF THE DIRECTOR OF PUBLIC WORKS.  
 3. NO REPRESENTATIVE OF THE NEIGHBORHOOD OF PUBLIC WORKS WILL SURVEY OR LAY OUT ANY PORTION OF THE WORK.  
 4. GRADES TO WHICH THIS IMPROVEMENT IS TO BE CONSTRUCTED ARE SHOWN ON PLANS AND PROFILES. GRADE POINTS FOR TOP OF CURB, CENTER LINE OF STREETS OR CENTER LINE OF ALLEYS ARE SHOWN BY CIRCLES ON PROFILES. AT ALL POINTS BETWEEN DESIGNATED POINTS THE GRADE SHALL BE ESTABLISHED SO AS TO CONFORM TO A STRAIGHT LINE DRAWN BETWEEN SAID DESIGNATED POINTS.  
 5. THE PRIVATE ENGINEER SHALL FURNISH THE NEIGHBORHOOD OF PUBLIC WORKS WITH GRADE SHEETS AND DRAWINGS FOR ALL HOUSE LATERALS AND "T" OR "Y" BRANCHES AND SHALL PROVIDE STAKES FOR THEM AT THEIR PROPER LOCATIONS WITH STATIONING PLAINLY MARKED. ALL HOUSE LATERALS SHALL BE CONSTRUCTED IN A STRAIGHT ALIGNMENT AT RIGHT ANGLES FROM THE MAIN LINE SEWER OCCUPY AS SHOWN ON THE PLANS. HOUSE LATERALS FROM CHIMNEYS SHALL NOT HAVE AN ANGLE OF LESS THAN 45° WITH THE MAIN LINE SEWER. ANY CHANGE IN ALIGNMENT SHALL BE REQUESTED IN WRITING BY THE PRIVATE ENGINEER.  
 6. THE PRIVATE ENGINEER SHALL FURNISH THE HOUSE LATERAL DEPTH AT THE PROPERTY LINE BELOW THE TOP OF CURB ELEVATION FOR EACH HOUSE LATERAL ON THE GRADE SHEET.  
 7. BEFORE WORK CAN BE STARTED, THE CONTRACTOR MUST OBTAIN A PERMIT TO EXCAVATE IN COUNTY STREETS FROM THE CONSTRUCTION DIVISION OF LOS ANGELES COUNTY DEPARTMENT OF PUBLIC WORKS, DISTRICT OFFICE IN S. AND PLY AVE. TO THE DIRECTOR OF PUBLIC WORKS 250 ALPACATE ST., LOS ANGELES, CA 90033 TO OBTAIN THE USE OF CONSTRUCTION INSPECTION AND RECORD PLANS.  
 8. IF WORK IS TO BE DONE IN ALLEYS, A PERMIT MUST BE OBTAINED FROM THE STATE OF CALIFORNIA, DIVISION OF HIGHWAYS, 180 SOUTH SPRING STREET, LOS ANGELES, CALIFORNIA.  
 9. APPROVAL OF THIS PLAN BY THE COUNTY OF LOS ANGELES DOES NOT CONSTITUTE A REPRESENTATION AS TO THE ACCURACY OF THE LOCATION OF OR THE EXISTENCE OR NON-EXISTENCE OF ANY UNDERGROUND UTILITY PIPE, OR STRUCTURE WITHIN THE LIMITS OF THE PROJECT. THIS NOTE APPLIES TO ALL PAGES.  
 10. REFER TO SECTION 7.16.1 OF THE STANDARD SPECIFICATIONS, REGARDING SAFETY ORDER.  
 11. PRIOR TO THE ISSUANCE OF THE REQUIRED SEWER CONSTRUCTION PERMIT, THE CONTRACTOR SHALL OBTAIN AND FILE WITH THE COUNTY ENGINEER COPIES OF A PERMIT TO EXCAVATE IN COUNTY STREETS FROM THE CONSTRUCTION DIVISION OF PUBLIC WORKS. A PERMIT FOR EXCAVATIONS AND TRENCHES FROM THE STATE OF CALIFORNIA, DIVISION OF INDUSTRIAL SAFETY AND A CERTIFICATE OF BONDING COMPENSATION INSURANCE WITH THE DEPARTMENT OF PUBLIC WORKS (SEE REG. 26, 28 AND 29) ANGLE, CALIFORNIA, SHALL BE OBTAINED BY THE CONTRACTOR PRIOR TO COMMENCEMENT OF CONSTRUCTION.

CONSTRUCTION NOTES:  
 1. WORK SHALL BE CONSTRUCTED ACCORDING TO THE STANDARD SPECIFICATIONS FOR PUBLIC WORKS CONSTRUCTION (1988 EDITION) WITH THE EXCEPTIONS AND MODIFICATIONS SET FORTH IN THESE PLANS.  
 2. THE CONTRACTOR SHALL NOTIFY THE COUNTY ENGINEER BY TELEPHONE, (213) 962-8605, AT LEAST TWENTY-FOUR HOURS BEFORE STARTING ANY WORK UNDER THIS CONTRACT.  
 3. HOUSE LATERALS TO BE CONSTRUCTED WITH INVERTS AT PROPERTY LINE 8 FEET BELOW CURB GRADE EXCEPT AS NOTED.  
 4. WYE OR "Y" BRANCHES MAY BE USED FOR CONNECTIONS TO MAINLINE SEWERS EXCEPT AS NOTED.  
 5. ALL STRUCTURES SHALL BE EITHER BRICK MANHOLES PER S-3 OR PRECAST CONCRETE MANHOLES PER S-3L EXCEPT AS NOTED.  
 6. FINISH STAGES ON THE PROPERTY LINE OR PROPERTY LINES PRODUCED AT RIGHT ANGLES TO THE SEWER LINE AT THE CENTER LINE OF EACH MANHOLE.  
 7. MANHOLE TOPS IN UNIMPROVED AREAS OF 18" TO 24" SHALL BE SIX INCHES ABOVE FINISHED GRADE.  
 8. WITHIN CLAY PIPE JOINTS SHALL BE TYPE "D" OR "E" PER STANDARD SPECIFICATIONS SECTION 300-2.  
 9. IF A POWER POLE IS WITHIN THREE FEET OF THE SEWER, THE SEWER SHALL BE ENCASED PER S-3L CASE B, TWO FEET ON EACH SIDE FROM THE POINT OF INTERFERENCE.  
 10. IF DURING THE COURSE OF CONSTRUCTION IT IS DETERMINED THAT THERE IS LESS THAN FOUR FEET OF COVER OVER THE TOP OF A MAIN LINE OR HOUSE LATERAL SEWER WHICH IS NOT INDICATED ON THE PLANS, THE PIPE SHALL BE ENCASED PER S-3L CASE B UNLESS OTHERWISE APPROVED BY THE DIRECTOR OF PUBLIC WORKS.  
 11. ALL JOINTS BETWEEN CLAY PIPE AND WITHIN CLAY PIPE SHALL BE MADE WITH A RUBBER SLEEVE JOINT, TYPE "C" OR "D", WITH RUBBER GASKETS PER STANDARD SPECIFICATIONS SECTION 300-2.  
 12. SEWERS TO BE TESTED FOR LEAKAGE PER SECTION 300-1 OF THE STANDARD SPECIFICATIONS AND SPECIAL PROVISIONS.  
 13. REINFORCE ALL TRENCHES WITHIN PAVED AREAS TO MEET L.A. COUNTY ROAD DEPT. OR CALIFORNIA STATE HIGHWAY REQUIREMENTS IN ACCORDANCE WITH PERMITS.  
 14. FULL COMPLIANCE WITH SECTION 300-3.4 OF THE STANDARD SPECIFICATIONS SHALL BE MAINTAINED OR BACFILL IN STREETS. DEFLECTION OF BACFILL, CONSTRUCTION AND BOND EQUIVALENTS BY A QUALIFIED, REGISTERED TESTING LABORATORY SHALL BE PROVIDED BY THE PERMITTEE PRIOR TO THE ISSUANCE OF A CERTIFICATE OF PARTIAL ACCEPTANCE.  
 15. SPECIAL BACFILL IN EXISTENT CONSTRUCTION (A) BACFILL, TRENCH AND REPLACE OTHER EARTH SO AS TO ACHIEVE THE NATURAL OR FINISHED GRADES AND SLOPES SHOWN ON THE DRAWINGS PLAN APPROVED FOR THE DEVELOPMENT BY THE LAND SURVEYING DIVISION. (B) ALL BACFILL AND EARTH REPLACED SHALL BE COMPACTED TO A MINIMUM OF 90% OF MAXIMUM DENSITY PER A.S.T.M. STD. METHOD OF TEST 9985 BY AN APPROVED ACCEPTABLE CERTIFICATION OF SUCH CONSTRUCTION SHALL BE SUBMITTED TO THE CONSTRUCTION DIVISION, PUBLIC WORKS DEPARTMENT.

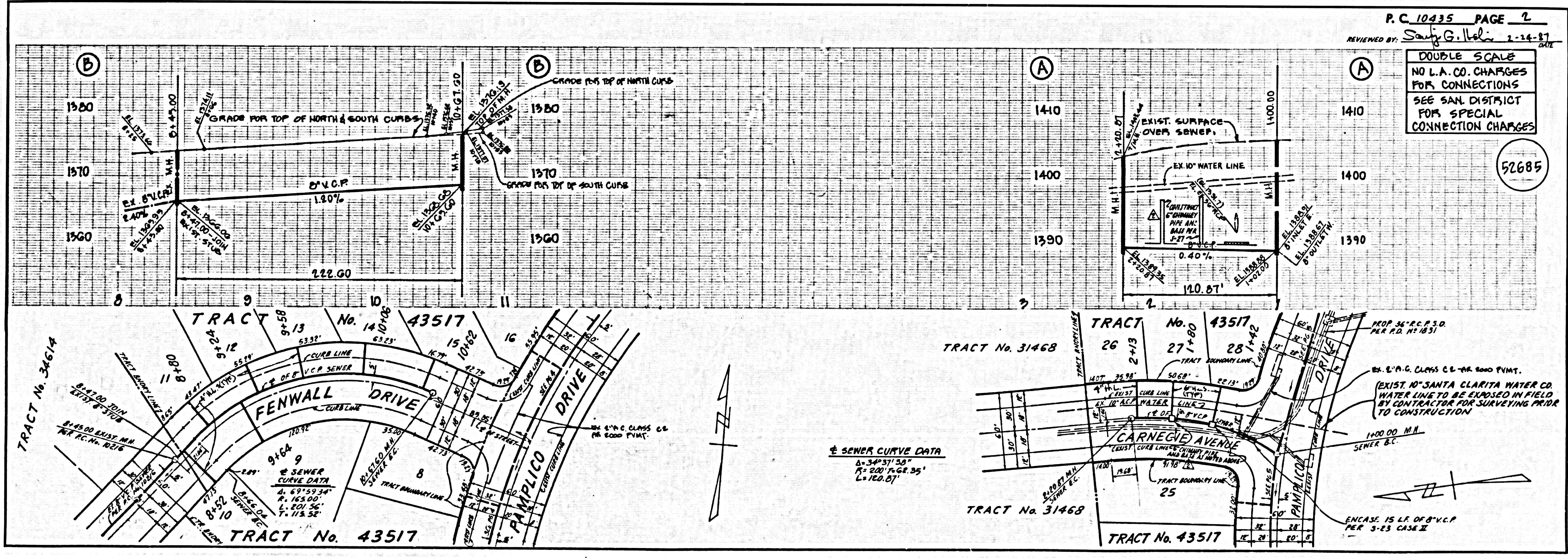
PROFILE, ALIGNMENT AND GRADE OF  
**SANITARY SEWERS**  
 TO BE CONSTRUCTED IN  
**TRACT No. 43517**  
**PRIVATE CONTRACT NO. 10435**  
 A 92-G.H-6  
 W.S. 62  
 3 SHEETS, 5 PAGES  
 SCALE: HORIZ. 1" = 40' VERT. 1" = 4'  
 OCTOBER, 1985  
 PREPARED IN THE OFFICES OF  
**LANCO ENGINEERING**  
 100 CRENSHAW BLVD. SUITE 200  
 TORRANCE, CALIFORNIA 90501  
 BY: M.C. M.C. J.  
 REG. C. E. No. 22704



THE FOLLOWING LATEST EDITION STANDARD PLANS ON FILE IN THE OFFICE OF THE COUNTY ENGINEER SHALL APPLY IN THE CONSTRUCTION OF THIS PROJECT:

SEWER	.....	S-2
SEWER MANHOLE	.....	S-3
SEWER MANHOLE WITH	.....	S-3L
SEWER MANHOLE WITH	.....	S-3M
CHIMNEY AND ENCLOSURE	.....	S-3N
WYE OR "Y" BRANCH	.....	S-3O
ALLOWABLE TRENCH WIDTH	.....	S-3P
WOODEN MANHOLE FRAME AND COVER	.....	S-3Q
NON-BIODEGRADABLE PRECAST CONCRETE MANHOLE	.....	S-3R
CHIMNEY PIPE AND BASE	.....	S-3T

COUNTY OF LOS ANGELES, CALIFORNIA  
 THOMAS A. TIDEMANSON, DIRECTOR OF PUBLIC WORKS  
 CHARLES W. CARRY, CHIEF ENGINEER  
 APPROVED: [Signature] 2/27/87  
 CHECKED: [Signature] 2/24/87  
 REG. C.E. NO. 16841  
 SANTA CLARITA VALLEY BLDG. DIST. B.R.



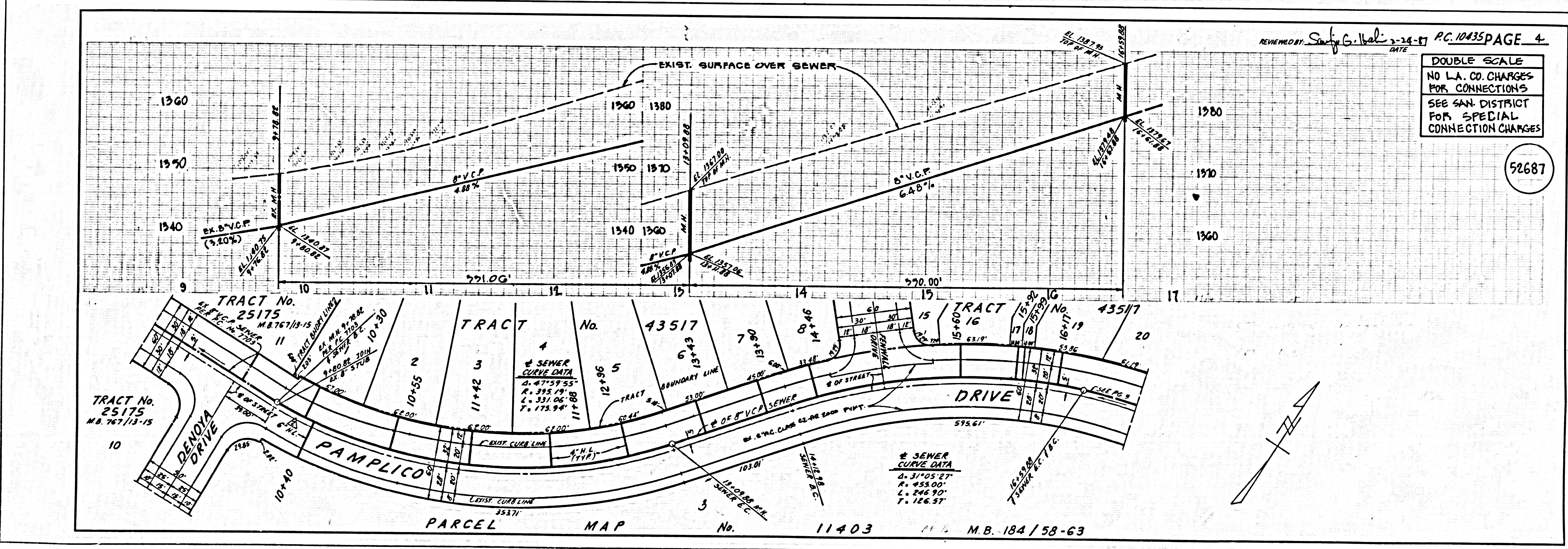
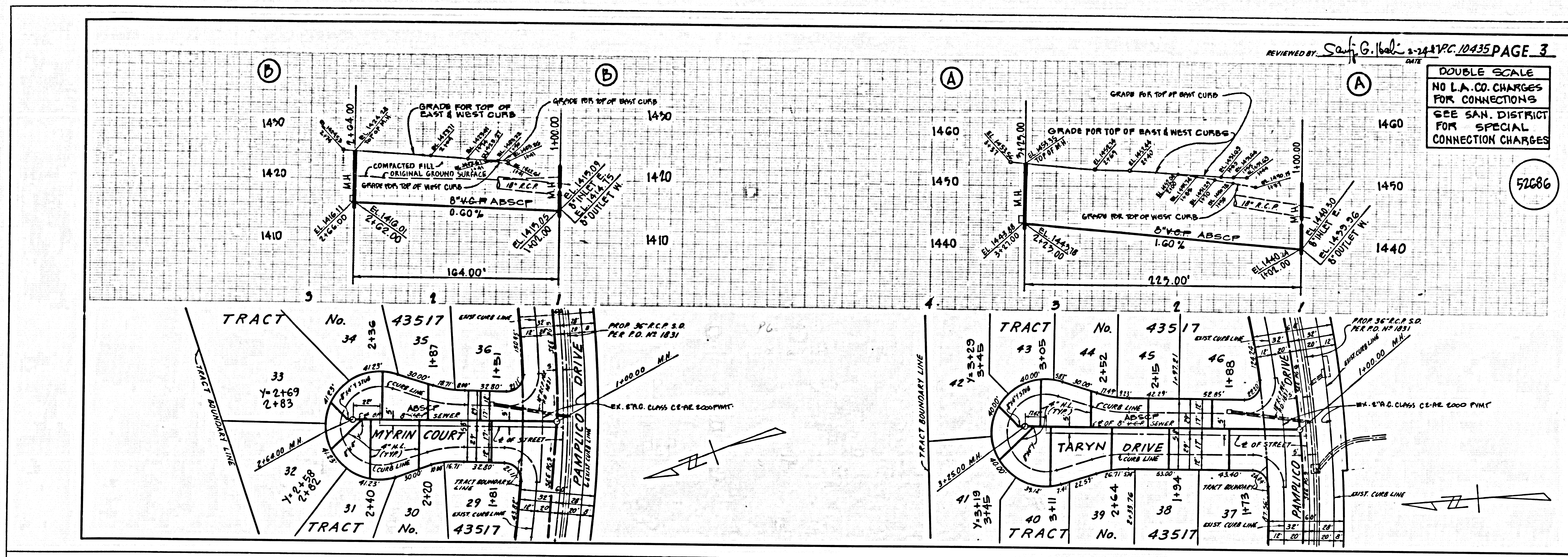
P.C. 10435 PAGE 2  
 REVIEWED BY: G. H. BELT 2-24-87

DOUBLE SCALE  
 NO L.A. CO. CHARGES FOR CONNECTIONS  
 SEE SAN. DISTRICT FORM SPECIAL CONNECTION CHARGES

SEWER CURVE DATA  
 P.C. 20+78.25  
 L=110.07'

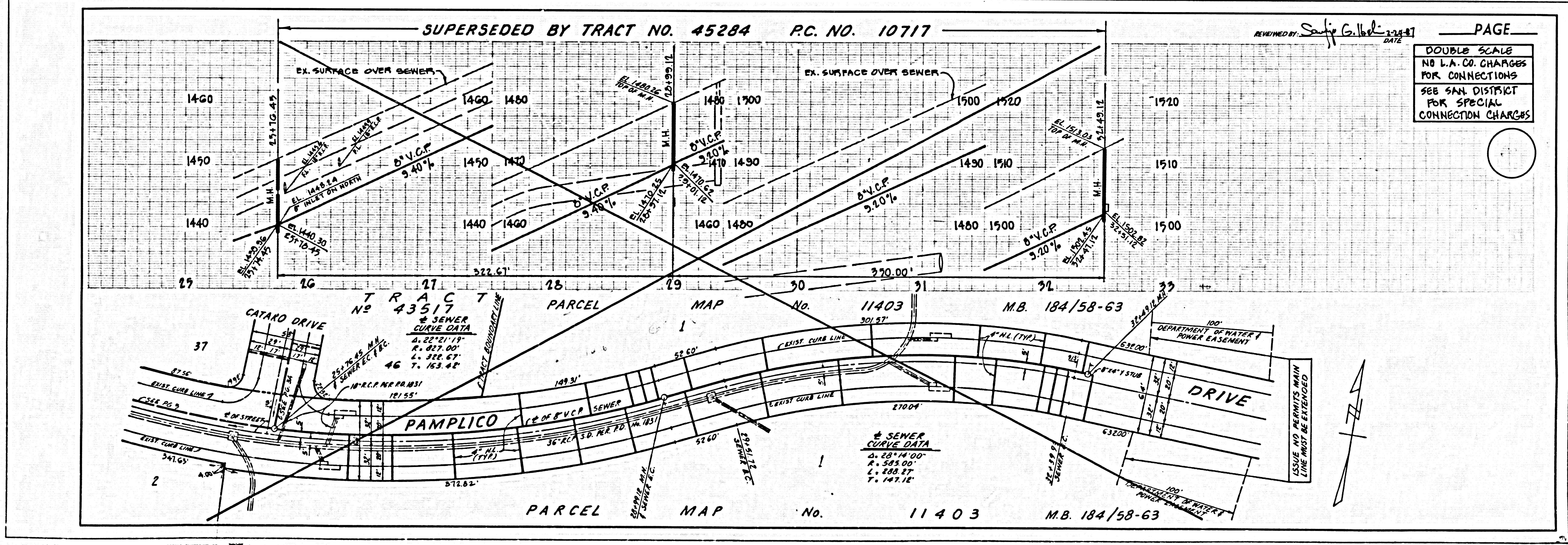
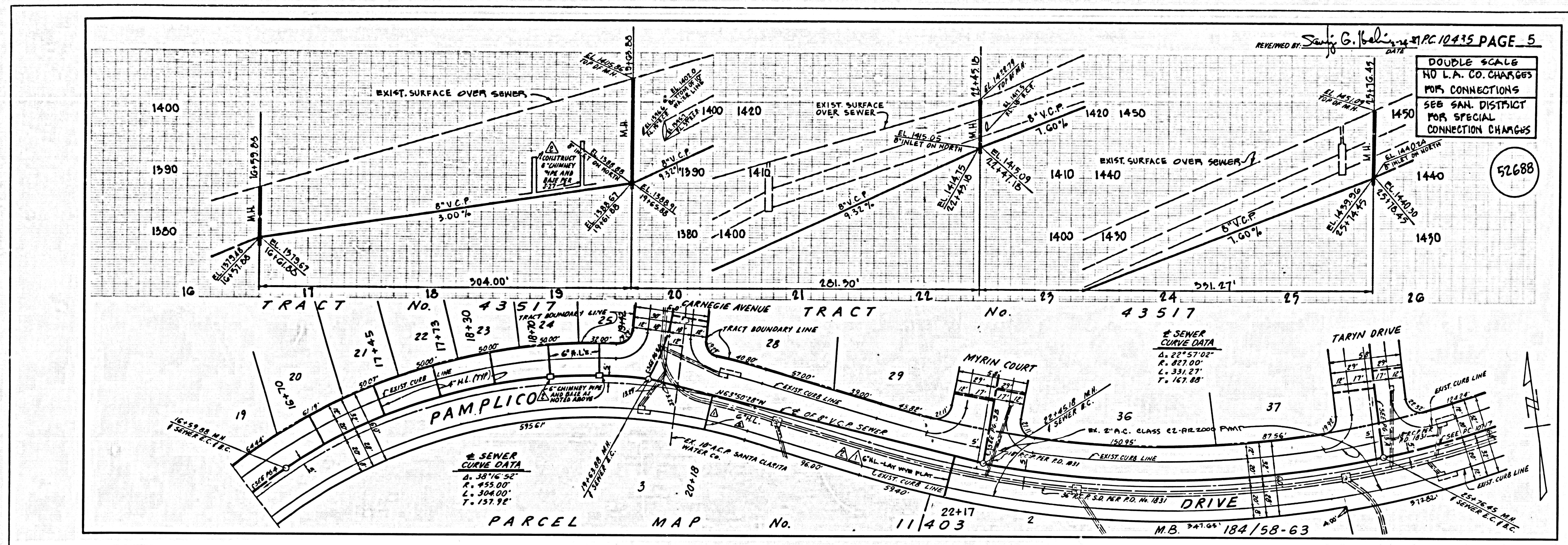
ENCASE 15 LF. OF 8" V.C.P. PER S-3L CASE II

1  
 2540129



2

PC 10435



C.C. 101.39