

B.M. CG 3918 ELEV. 694.931
 RDBM TAG IN CB 34 FT. 5/0 B.C.R.
 25 FT. S. x 100 FT. 4/0 INT. DIAMOND
 BAR BLVD. x SUNSET CROSSING ROAD.
 OTTERBEIN QUAD. 19 20

CONSTRUCTION NOTES-CONTINUED

- 16. FULL COMPLIANCE WITH PART IV OF THE SPECIAL PROVISIONS IS REQUIRED FOR THE INSTALLATION OF A.B.S.C.P.
- 17. MANHOLE WATER STOP GASKETS AND CLAMPS ARE REQUIRED FOR THE CONNECTION OF A.B.S.C.P. TO MANHOLE STRUCTURE.
- 18. A.B.S.C.P. SOLID WALL PIPE MUST BE USED FOR WYE AND HOUSE LATERAL CONNECTIONS TO A.B.S.C.P. MAINLINE SEWER.
- 19. A.B.S.C.P. SHALL BE BEDDED IN CONFORMANCE WITH THE TABLE IN SECTION 3-5.1 OF PART IV OF THE SPECIAL PROVISIONS.
- 20. 3-DEGREE DEFLECTION COUPLERS SHALL BE USED TO ACCOMPLISH RADIIUS OF CURVATURE LESS THAN 180'

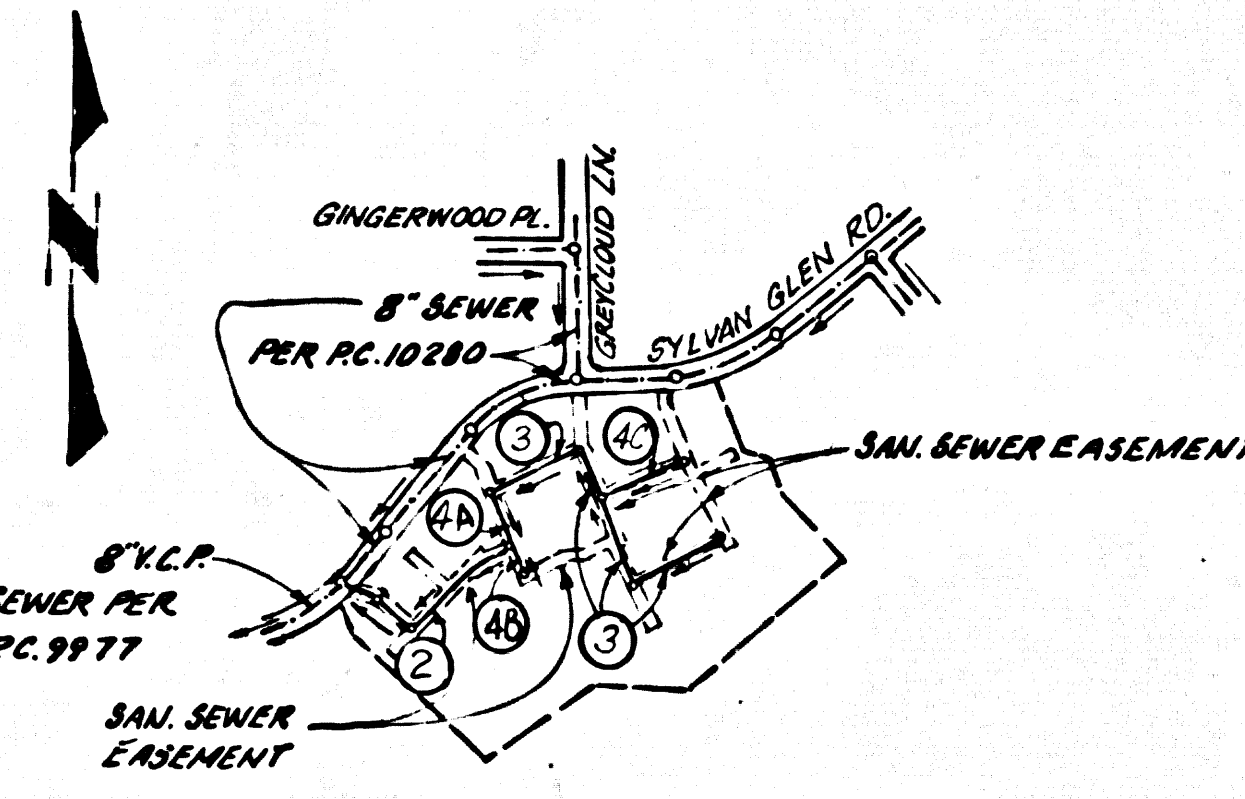
DOUBLE SCALE

REVISION NO. 2
 REVISED VARIOUS H.L. LOCATIONS TO CONFORM WITH ARCH. HOOK-UP LOCATIONS. REDUCED LENGTH OF MAINLINE FROM STA. 3173.15 TO STA. 3114.18 ON PAGE 3.

APPROVED: Santi G. Ibal 11-03-86
 DEPARTMENT OF PUBLIC WORKS DATE

REVISION NO. 1
 REVISED SURFACE OVER SEWER AND FLOW LINE ELEVATIONS FROM STA. 1457.06 TO 6+05.39 ON PAGE 2 AND ON PAGES 3 & 4. ALL FLOWLINE ELEVATIONS AND ALL SURFACE ELEVATIONS.

APPROVED: Santi G. Ibal 7/16/86
 DEPARTMENT OF PUBLIC WORKS DATE



INDEX MAP
 P.C. 10442 TRACT NO. 43756
 SCALE: 1" = 400'

NOTE: NUMBERS IN CIRCLES INDICATE PAGENUMBERS

NO CONNECTION FOR THE DISPOSAL OF INDUSTRIAL WASTES SHALL BE MADE TO SEWERS SHOWN OUTSIDE DRAINAGES UNTIL A PERMIT FOR INDUSTRIAL WASTEWATER DISCHARGE HAS BEEN ISSUED BY THE SANITATION DISTRICT FOR SAID CONNECTION.

BEFORE BREAKING INTO OR CONSTRUCTION ON A COUNTY SANITATION DISTRICT SEWER AND PRIOR TO FINAL ACCEPTANCE OF THE PROJECT, SANITATION DISTRICT INSPECTION SHALL BE NOTIFIED BY PHONE (818) 242-8008 SO THAT REQUIRED INSPECTION CAN BE MADE.

DO NOT ISSUE H.L. CONNECTIONS UNTIL OUTLET P.C. 10280 IS ACCEPTED BY THE COUNTY FOR PUBLIC USE.

GENERAL NOTES:

- ELEVATIONS ARE IN FEET ABOVE U.S.C. & G.S. SEA LEVEL DATUM OF 1989
- NO REVISIONS SHALL BE MADE IN THESE PLANS WITHOUT THE APPROVAL OF THE COUNTY PUBLIC WORKS
- NO REPRESENTATIVE OF THE COUNTY ENGINEER WILL SURVEY OR LAY OUT ANY PORTION OF THE WORK.
- GRADES TO WHICH THE IMPROVEMENTS ARE TO BE CONSTRUCTED ARE SHOWN ON PLANS AND PROFILES. GRADE POINTS FOR TOP OF CURBS, CENTER LINE OF STREETS, OR CENTER LINE OF ALLEYS ARE SHOWN BY CIRCLES ON PROFILES AT ALL POINTS BETWEEN DESIGNATED POINTS. THE GRADE SHALL BE ESTABLISHED SO AS TO CONFORM TO A STRAIGHT LINE DRAWN BETWEEN SAID DESIGNATED POINTS.
- THE PRIVATE ENGINEER SHALL FURNISH PUBLIC WORKS WITH GRADE SHEETS AND STATIONING FOR ALL HOUSE LATERALS AND 12" OR 16" BRANCHES AND SHALL PROVIDE STAKES FOR THEM AT THEIR PROPER LOCATIONS WITH STATIONING PLAINLY MARKED ALL HOUSE LATERALS SHALL BE CONSTRUCTED IN A STRAIGHT ALIGNMENT AT RIGHT ANGLES TO THE MAIN LINE SEWER EXCEPT AS SHOWN ON THE PLANS. HOUSE LATERALS FROM CHIMNEYS SHALL NOT HAVE AN ANGLE OF LESS THAN 45° WITH THE MAIN LINE SEWER. ANY CHANGE IN ALIGNMENT SHALL BE RECORDED IN WRITING BY THE PRIVATE ENGINEER.
- THE PRIVATE ENGINEER SHALL FURNISH HOUSE LATERAL DEPTH AT THE PROPERTY LINE BELOW THE TOP OF CURB ELEVATION FOR EACH HOUSE LATERAL ON THE GRADE SHEET.
- BEFORE WORK CAN BE STARTED, THE CONTRACTOR MUST OBTAIN A PERMIT TO EXCAVATE IN COUNTY STREETS FROM THE L.A. COUNTY PUBLIC WORKS DISTRICT OFFICE NO. 1 AND PAY A FEE TO "PUBLIC WORKS", 500 S. VERMONT AVENUE, LOS ANGELES, CALIF. TO COVER THE COST OF CONSTRUCTION INSPECTION AND RECORD PLANS.
- IF WORK IS TO BE DONE IN A STATE HIGHWAY, A PERMIT MUST BE OBTAINED FROM THE STATE OF CALIFORNIA DIVISION OF HIGHWAYS, 120 SOUTH SPRING STREET, LOS ANGELES, CALIFORNIA.
- APPROVAL OF THIS PLAN BY THE COUNTY OF LOS ANGELES DOES NOT CONSTITUTE A REPRESENTATION AS TO THE ACCURACY OF THE LOCATION OF OR THE EXISTENCE OR NON-EXISTENCE OF ANY UNDERGROUND UTILITY PIPE OR STRUCTURE WITHIN THE LIMITS OF THIS PROJECT. THIS NOTE APPLIES TO ALL PAGES.
- REFER TO SECTION 154.1 OF THE STANDARD SPECIFICATIONS, REGARDING SAFETY ORDERS.
- PRIOR TO THE ISSUANCE OF THE REQUIRED SEWER CONSTRUCTION PERMIT, THE CONTRACTOR SHALL OBTAIN AND FILE WITH PUBLIC WORKS COPIES OF A PERMIT TO EXCAVATE IN COUNTY STREETS FROM THE LOS ANGELES COUNTY PUBLIC WORKS. A PERMIT TO EXCAVATE AND TRENCHES FROM THE STATE OF CALIFORNIA DIVISION OF INDUSTRIAL SAFETY AND CERTIFICATE OF WORKER'S COMPENSATION INSURANCE WITH THE DEPARTMENT OF PUBLIC WORKS, 500 SOUTH VERMONT, RM. 406, LOS ANGELES, CALIFORNIA 90008, NAMED AS THE CERTIFICATE HOLDER TO BE NOTIFIED 30 DAYS PRIOR TO CANCELLATION OF POLICY.

CONSTRUCTION NOTES:

- WORK SHALL BE CONSTRUCTED ACCORDING TO THE STANDARD SPECIFICATIONS FOR PUBLIC WORKS CONSTRUCTION 1988 EDITIONS AND PUBLIC WORKS SPECIAL PROVISIONS FOR THE CONSTRUCTION OF SANITARY SEWERS DATED SEPTEMBER 26, 1978 AND SHALL BE PROTECTED ONLY IN THE PRESENCE OF THE COUNTY ENGINEER.
- THE CONTRACTOR SHALL NOTIFY THE CONSTRUCTION DIVISION BY TELEPHONE (818) 242-8008, AT LEAST TWENTY-FOUR HOURS BEFORE STARTING ANY WORK UNDER THIS CONTRACT.
- HOUSE LATERALS TO BE CONSTRUCTED WITH INVERTS AT PROPERTY LINE 8 FEET BELOW GRADE OF 8" OR 12" WIDE SIDEWALK OR DRIVE.
- ALL STRUCTURES SHALL BE EITHER BRICK OR CONCRETE MANHOLES PER S-5. IF PRECAST CONCRETE MANHOLES PER S-5, IN CASE II, WITH BUSHING IF NECESSARY PER STANDARD SPECIFICATIONS, SECTION 208.2.
- SEWERS TO BE TESTED FOR LEAKAGE PER SECTION 306.14 OF THE STANDARD SPECIFICATIONS AND SPECIAL PROVISIONS.
- RESURFACE ALL TRENCHES WITHIN PAVED AREAS TO MEET L.A. COUNTY ROAD DEPT. OR CALIFORNIA STATE HIGHWAY REQUIREMENTS IN ACCORDANCE WITH PERMITS.
- FULL COMPLIANCE WITH SECTION 306.1.33 OF THE SPECIAL PROVISIONS WILL BE REQUIRED FOR BACKFILL IN STREETS. CERTIFICATION OF BACKFILL, COMPACTION AND SAND EQUIVALENTS BY A QUALIFIED, REGISTERED TESTING LABORATORY SHALL BE PROVIDED BY THE PERMITTEE PRIOR TO THE ISSUANCE OF A CERTIFICATE OF PARTIAL ACCEPTANCE.
- SPECIAL BACKFILL IN EASEMENT CONSTRUCTION (A) BACKFILL TRENCH AND REPLACE OTHER EARTH SO AS TO ACHIEVE THE NATURAL OR FINISHED GRADES AND SLOPES SHOWN ON THE GRADING PLAN APPROVED FOR THE DEVELOPMENT BY THE BUILDING AND SAFETY DIVISION. (B) ALL BACKFILL AND EARTH REPLACED SHALL BE COMPACTED TO A MINIMUM OF 90% OF MAXIMUM DENSITY PER A.S.T.M. STD. METHOD OF TEST D998 ST AS MODIFIED ACCEPTABLE CERTIFICATION OF SUCH COMPACTION SHALL BE SUBMITTED TO THE CONSTRUCTION DIVISION.

PROFILE, ALIGNMENT AND GRADE OF
SANITARY SEWERS
 TO BE CONSTRUCTED IN

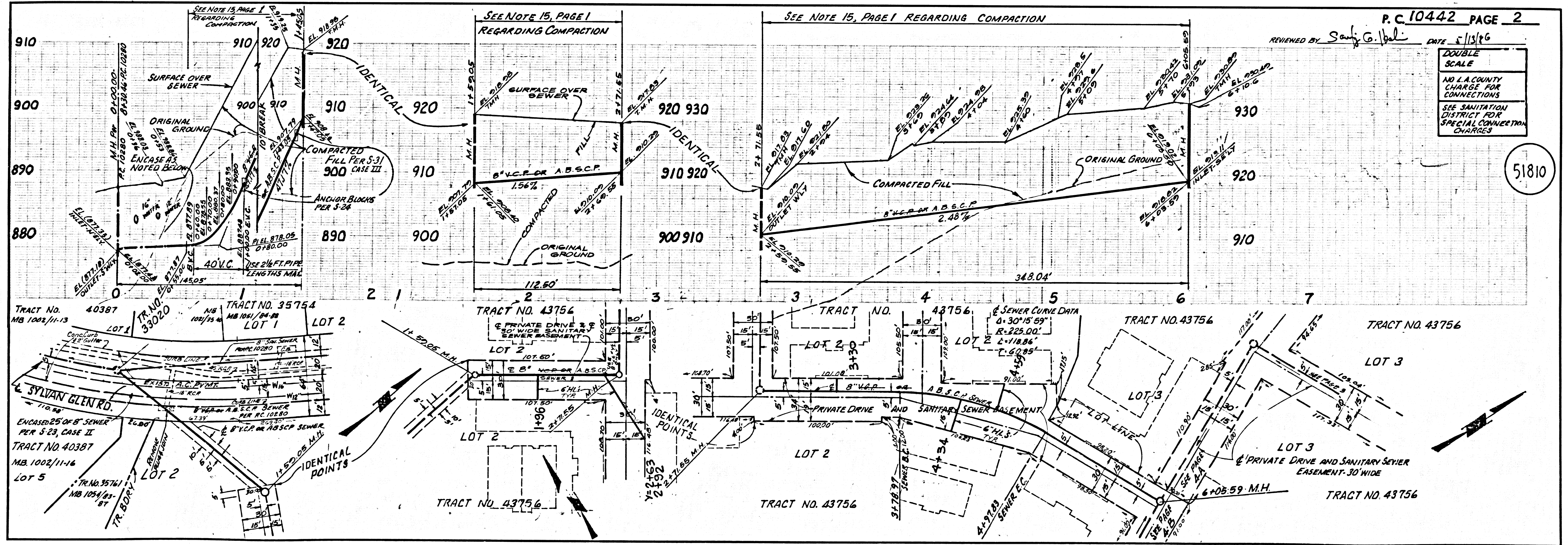
TRACT NO. 43756
 PRIVATE CONTRACT NO. 10442
 U-154, B-3

2 SHEETS, 4 PAGES
 SCALE: VERT. 1" = 4' HORIZ. 1" = 40'
 OCTOBER, 1985
 PREPARED IN THE OFFICES OF
PFEILER & ASSOCIATES ENGINEERS
 7859 W. COMMONWEALTH AVENUE, FULLERTON, CA. 92633
 BY: E. J. Pfeiler
 REG. L. E. No. 12507

THE FOLLOWING LATEST REVISED STANDARD PLANS ON FILE IN THE OFFICE OF THE COUNTY ENGINEER SHALL APPLY IN THE CONSTRUCTION OF THIS PROJECT:

LEGEND	5-1
MINIMUM PUBLIC SAFETY REQUIREMENTS	5-2
BRICK MANHOLE	5-3
STANDARD MANHOLE STEP	5-4
BEDDING FOR SEWER PIPE	5-5
CRACKING AND CONCREMENT	5-6
WYE OR TEE SUPPORT	5-7
ALLOWABLE TRENCH WIDTHS	5-8
LOCKING MANHOLE FRAME AND COVER	5-9
NON-REINFORCED PRECAST CONCRETE MANHOLE	5-10
REINFORCED PRECAST CONCRETE PIPE	5-11
ANCHOR BLOCK	5-12
E. & W. CONNECTION, STRAP BLOCS	5-13
SPECIAL SUPPORT AND PROTECTION	5-14

COUNTY OF LOS ANGELES, CALIFORNIA
 THOMAS A. TIDEMANSON, DIRECTOR OF PUBLIC WORKS
 APPROVED: Charles M. Curry 5/13/86
 CHIEF ENGINEER
 CO. DIST. NO. 81
 CHECKED: John A. Williams 5/13/86
 DATE
 REG. C.E. NO. 16841
 SAN DIMAS BLDG. DIST. 1000



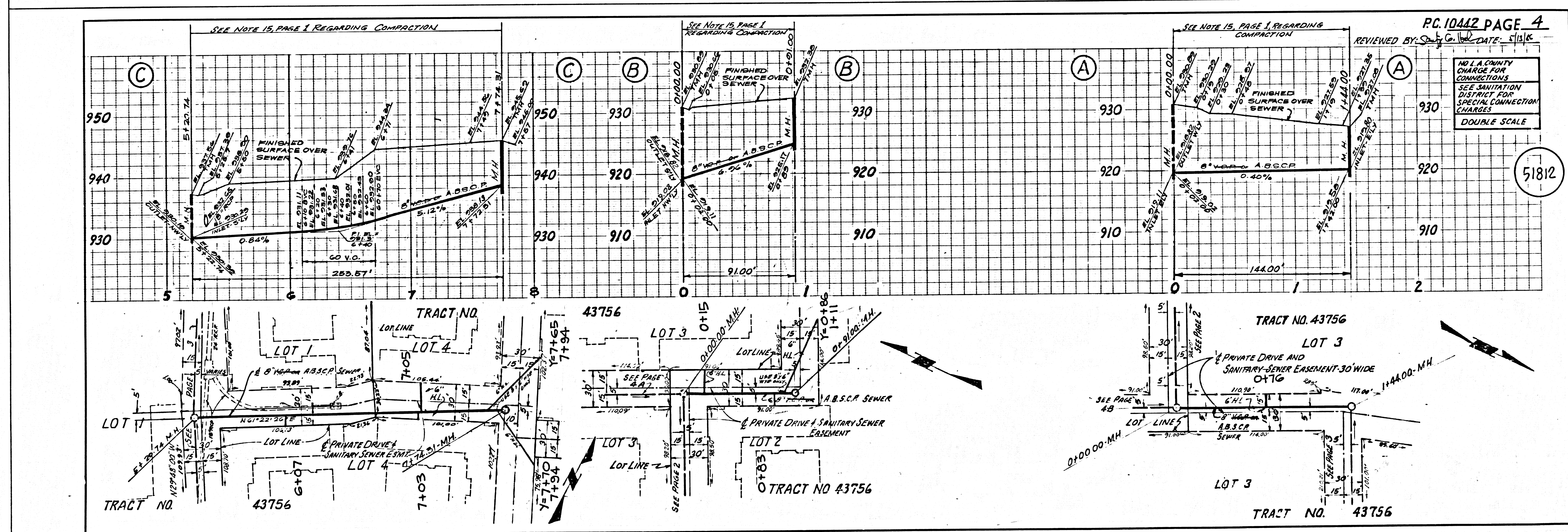
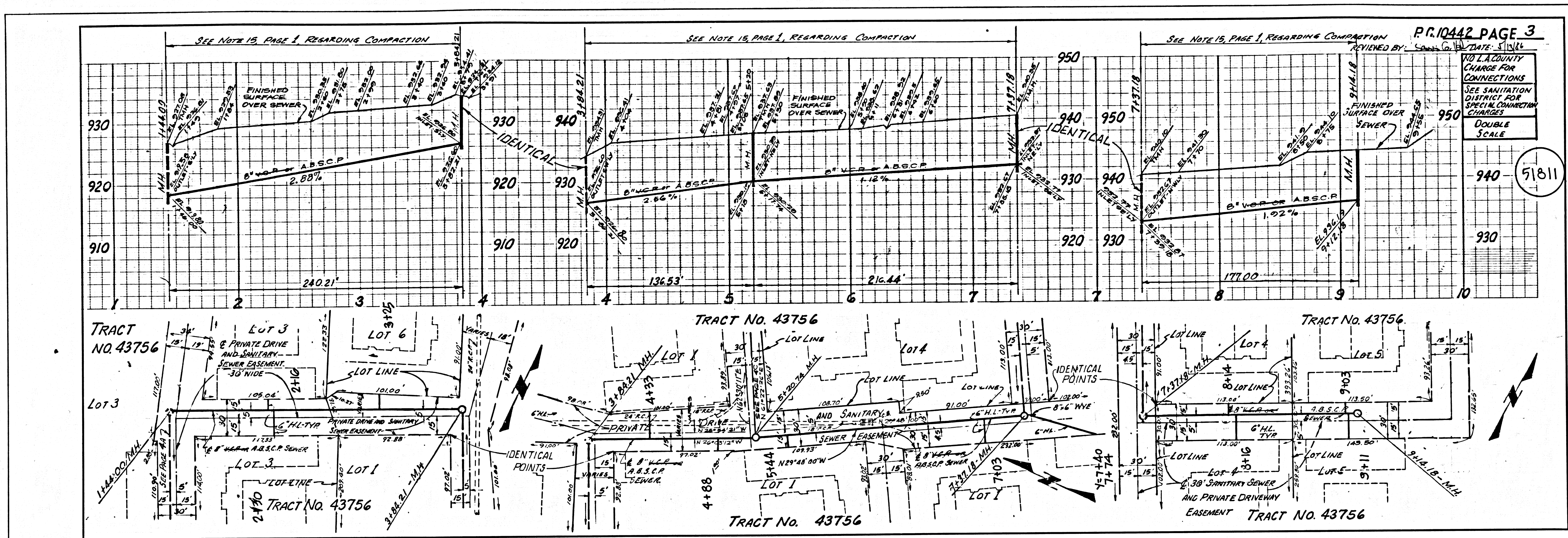
P.C. 10442 PAGE 2

REVIEWED BY: Santi G. Ibal DATE: 5/13/86

DOUBLE SCALE
 NO L.A. COUNTY CHARGE FOR CONNECTIONS
 SEE SANITATION DISTRICT FOR SPECIAL CONNECTION CHARGES

51810

5440129 82524.0M.5T



SAPOL 09 025E4.0M RT