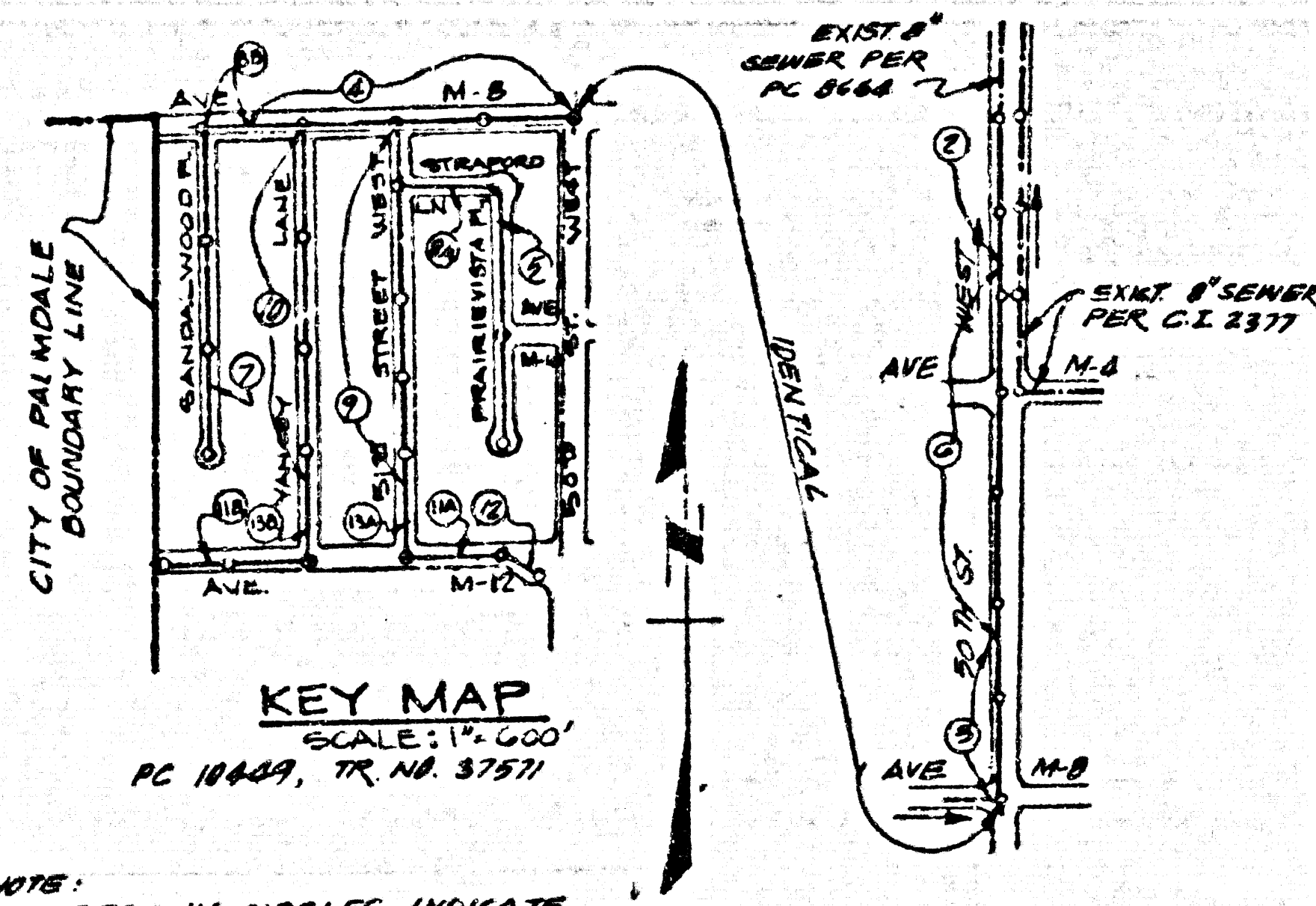


BM # C.L. 274 ELEV. 2491.98
 C.S. MON. IN WELL 14 IN. ON C/L INT.
 OF AVE. M 150' ST. W. MKD. (CO. BAK.
 95 21 77N T6N R13 W 17E) (W. EDGE)
 BASELINE QUAD. 19.12

DOUBLE SCALE



NOTES:
 NUMBERS IN CIRCLES INDICATE
 PAGE NUMBERS.

| REV. NO. | PAGE NO. | DATE | DESCRIPTION OF CHANGE |
|----------|----------|---------------|--|
| 1 | 9 | NOV. 23, 1967 | FROM STATION 1 + 70 TO 8 + 70. REVISE MAIN LINE SEWER PROFILE AND HOUSE LATERALS' CONSTRUCTION, ENCASEMENT, AND MATERIAL. INITIATED BY PRIVATE ENGINEER. STORM DRAIN PROFILE RAISED. |
| 1 | 8A | NOV. 23, 1967 | REVISION BECAUSE OF ABOVE REVISION. <i>Sandy G. Balie</i> 12-16-87 APPROVED BY: DATE |
| 2 | 7 | FEB. 4, 1968 | REVISED SEWER PROFILE FROM STA. 1470 TO 1435 DUE TO CHANGES IN ROAD PROFILE. INITIATED BY PRIVATE ENGINEER. <i>Sandy G. Balie</i> 2-1-88 APPROVED BY: DATE |
| 3 | 12 | MAY 16, 1968 | REVISED SEWER PROFILE FROM STA. 3+70.61 TO 3+71.35 DUE TO CHANGES IN ROAD PROFILE. INITIATED BY PRIVATE ENGINEER. <i>Sandy G. Balie</i> 5-16-68 APPROVED BY: DATE |

NO CONNECTION FOR THE DISPOSAL OF INDUSTRIAL WASTES SHALL BE MADE TO SEWERS SHOWN ON THESE DRAWINGS UNTIL A PERMIT FOR INDUSTRIAL WASTEWATER DISCHARGE HAS BEEN ISSUED BY THE SANITATION DISTRICTS FOR SAID CONNECTION.

BEFORE BREAKING INTO OR CONSTRUCTION ON A COUNTY SANITATION DISTRICT SEWER AND PRIOR TO FINAL ACCEPTANCE OF THE PROJECT, SANITATION DISTRICT INSPECTOR SHALL BE NOTIFIED BY PHONE (805) 947-5027 SO THAT REQUIRED INSPECTION CAN BE MADE.

GENERAL NOTES:

- ELEVATIONS ARE IN FEET ABOVE U.S.C. & G.S. SEA LEVEL DATUM OF 1988.
- NO REVISIONS SHALL BE MADE IN THESE PLANS WITHOUT THE APPROVAL OF THE DIRECTOR OF PUBLIC WORKS.
- NO REPRESENTATIVE OF THE COUNTY ENGINEER WILL SURVEY OR LAY OUT ANY PORTION OF THE WORK.
- GRADES TO WHICH THIS IMPROVEMENT IS TO BE CONSTRUCTED ARE SHOWN ON PLANS AND PROFILES. GRADE POINTS FOR TOP OF CURBS, CENTER LINE OF STREETS, OR CENTER LINE OF ALLEYS ARE SHOWN BY CIRCLES ON PROFILES. ALL POINTS BETWEEN DESIGNATED POINTS THE GRADE SHALL BE ESTABLISHED SO AS TO CONFORM TO A STRAIGHT LINE DRAWN BETWEEN SAID DESIGNATED POINTS.
- THE PRIVATE ENGINEER SHALL FURNISH THE DEPTH OF PIPE JOISTS WITH STATIONING FOR ALL HOUSE LATERALS AND 10' OR 15' BRANCHES AND SHALL PROVIDE STAKES FOR VIEW AT THEIR PROPER LOCATIONS WITH STATIONING PLAINLY MARKED. ALL HOUSE LATERALS SHALL BE CONSTRUCTED IN A STRAIGHT ALIGNMENT AT RIGHT ANGLES FROM THE MAIN LINE SEWER EXCEPT AS NOTED ON THE PLANS. HOUSE LATERALS FROM CHIMNEYS SHALL NOT HAVE AN ANGLE OF LESS THAN 45° WITH THE MAIN LINE SEWER. ANY CHANGE IN ALIGNMENT SHALL BE REQUESTED IN WRITING BY THE PRIVATE ENGINEER.
- THE PRIVATE ENGINEER SHALL FURNISH THE HOUSE LATERAL DEPTH AT THE PROPERTY LINE BELOW THE TOP OF CURB ELEVATION FOR EACH HOUSE LATERAL ON THE GRADE SHEET.
- BEFORE WORK CAN BE STARTED, THE CONTRACTOR MUST OBTAIN A PERMIT TO EXCAVATE IN COUNTY OF LOS ANGELES FROM THE COUNTY ENGINEER, DIVISION OF PUBLIC WORKS, PERMIT OFFICE NO. 8 AND PAY A FEE TO THE OFFICE OF PUBLIC WORKS, 1240 ALLAN ST., LOS ANGELES, CALIFORNIA 90004 TO COVER THE COST OF CONSTRUCTION INSPECTION AND RECORD PLANS.
- IF WORK IS TO BE DONE IN A STATE HIGHWAY, A PERMIT MUST BE OBTAINED FROM THE STATE OF CALIFORNIA, DIVISION OF HIGHWAYS, 120 SOUTH SPRING STREET, LOS ANGELES, CALIFORNIA.
- APPROVAL OF THIS PLAN BY THE COUNTY OF LOS ANGELES DOES NOT CONSTITUTE THE REPRESENTATION AS TO THE ACCURACY OF THE LOCATION OF OR THE EXISTENCE OR NON-EXISTENCE OF ANY UNDERGROUND UTILITIES. IT IS THE RESPONSIBILITY OF THE CONTRACTOR TO VERIFY THE LOCATION OF ALL UTILITIES PRIOR TO ALL PAGES.
- REFER TO SECTION 104.1 OF THE STANDARD SPECIFICATIONS REGARDING SAFETY ORDERS.
- PRIOR TO THE ISSUANCE OF THE REQUIRED CONSTRUCTION PERMIT THE CONTRACTOR SHALL OBTAIN AND FILE WITH THE COUNTY ENGINEER, DIVISION OF PUBLIC WORKS, COPIES OF A PERMIT TO EXCAVATE IN COUNTY OF LOS ANGELES AND A CERTIFICATE OF LIABILITY INSURANCE WITH THE COUNTY OF LOS ANGELES, DIVISION OF INDUSTRIAL SAFETY AND A CERTIFICATE OF WORKER'S COMPENSATION INSURANCE WITH THE DEPARTMENT OF PUBLIC WORKS, 1240 ALLAN ST., LOS ANGELES, CALIFORNIA 90004 AS THE CERTIFICATE HOLDER TO BE NOTIFIED IN WRITING PRIOR TO CANCELLATION OF PERMIT.

CONSTRUCTION NOTES:

- WORK SHALL BE CONSTRUCTED ACCORDING TO THE STANDARD SPECIFICATIONS FOR PUBLIC WORKS CONSTRUCTION, 1988 EDITION, 12000 SUPPLEMENT, DEPARTMENT OF PUBLIC WORKS. SPECIAL PROVISIONS FOR THE CONSTRUCTION OF SANITARY SEWERS DATED 5-28-87, 9-1-87, AND SHALL BE PROTECTED ONLY BY THE PRESENCE OF THE JURY OF PUBLIC WORKS.
- THE CONTRACTOR SHALL NOTIFY THE COUNTY ENGINEER, DIVISION OF PUBLIC WORKS, AT LEAST TWENTY-FOUR HOURS BEFORE STARTING ANY WORK UNDER THIS CONTRACT.
- HOUSE LATERALS TO BE CONSTRUCTED WITH INVERTS AT PROPERTY LINE 8 FEET BELOW CURB GRADE EXCEPT AS NOTED.
- WYE OR TEE BRANCHES MAY BE USED FOR CONNECTIONS TO MAINLINE SEWERS EXCEPT AS NOTED.
- ALL STRUCTURES SHALL BE EITHER BRICK MANHOLES PER S-3 OR PRECAST CONCRETE MANHOLES PER S-3B, EXCEPT AS NOTED.
- PROVIDE STAKES ON THE PROPERTY LINE OR PROPERTY LINE PROJECTIONS AT RIGHT ANGLES TO THE SEWER LINE AT THE CENTER LINE OF EACH MANHOLE.
- MANHOLE TOPS IN UNIMPROVED RIGHTS OF WAY TO BE SIX INCHES ABOVE FINISHED GRADE.
- VITRIFIED CLAY PIPE JOISTS SHALL BE TYPE 'D' OR 'D' PER STANDARD SPECIFICATIONS SECTION 308-2.
- IF A POWER POLE IS WITHIN THREE FEET OF THE SEWER, THE SEWER SHALL BE ENCASED PER S-23, CASE II, TWO FEET ON EACH SIDE FROM THE POINT OF INTERFERENCE.
- IF DURING THE COURSE OF CONSTRUCTION IT IS DETERMINED THAT THERE IS LESS THAN FOUR FEET OF COVER OVER THE TOP OF A MAIN LINE OR HOUSE LATERAL WHICH IS NOT INDICATED ON THE PLANS, THE PIPE SHALL BE ENCASED PER S-23, CASE II, UNLESS OTHERWISE APPROVED BY THE DIRECTOR OF PUBLIC WORKS.
- ALL JOINTS BETWEEN CAST IRON PIPE AND VITRIFIED CLAY PIPE SHALL BE MADE WITH A RUBBER SLEEVE JOINT, TYPE 'D' OR 'D', WITH BUSHING IF NECESSARY PER STANDARD SPECIFICATIONS, SECTION 308-2.
- SEWERS TO BE TESTED FOR LEAKAGE PER SECTION 301.4 OF THE STANDARD SPECIFICATIONS AND SPECIAL PROVISIONS.
- RESURFACE ALL TRENCHES WITHIN PAVED AREAS TO MEET A COUNTY PUBLIC WORKS OR CALIFORNIA STATE HIGHWAY REQUIREMENTS BY ACCORDANCE WITH PERMITS.
- FULL COMPLIANCE WITH SECTION 301.2.2 OF THE STANDARD SPECIFICATIONS WILL BE REQUIRED FOR BACKFILL IN STREETS. CERTIFICATION OF BACKFILL COMPLETION AND SAND EQUIVALENTS BY A QUALIFIED, REGISTERED TESTING LABORATORY SHALL BE PROVIDED BY THE PERMITTEE PRIOR TO THE ISSUANCE OF A CERTIFICATE OF PARTIAL ACCEPTANCE.
- SPECIAL BACKFILL IN EASEMENT CONSTRUCTION (A) BACKFILL TRENCHES AND REPLACE OTHER EARTH SO AS TO ACHIEVE THE NATURAL OR FINISHED GRADES AND IS OPEN SHOWING ON THE GRADING PLAN APPROVED FOR THE DEVELOPMENT BY THE LAND DEVELOPMENT DIVISION (B) ALL BACKFILL AND EARTH REPLACED SHALL BE COMPACTED TO A MINIMUM OF 90% OF MAXIMUM DENSITY PER A.S.T.M. STD. METHOD D 1557 BY AN APPROVED ACCEPTABLE CERTIFICATION OF SUCH COMPLETION SHALL BE SUBMITTED TO THE COUNTY ENGINEER, DIVISION.

SANITARY SEWERS

TO BE CONSTRUCTED IN

TRACT NO. 37571

PRIVATE CONTRACT NO. 10449

INDEX A-293
 7 SHEETS, 13 PAGES
 52297

SCALE: VERT. 1" = 4' NOVEMBER, 1987
 HORIZ. 1" = 40'
 PREPARED IN THE OFFICE OF
 C.W. COOK CO. INC.
 1155 W. OLYMPIC BLVD. STE. 316
 LOS ANGELES, CA. 90004
 BY: S.F. Mc...
 REG. C.E. No. 12512

THE FOLLOWING LATEST REVISED STANDARD PLANS ON FILE IN THE OFFICE OF THE DEPT. OF PUBLIC WORKS APPLY IN THE CONSTRUCTION OF THIS PROJECT.

| | |
|--|------|
| SECTION | DATE |
| MINIMUM PUBLIC SAFETY REQUIREMENTS | 8-8 |
| BRICK ENGINEER MANHOLES | 8-8 |
| STANDARD MANHOLE SET | 8-17 |
| REVISIONS FOR SEWER PIPES | 8-17 |
| ENCASING AND ENCASEMENT | 8-28 |
| WYE OR TEE BRANCHES | 8-28 |
| ADJUSTABLE TRENCH WIDTH | 8-28 |
| NON-REINFORCED PRECAST CONCRETE SEWER MANHOLES | 8-28 |
| SPECIAL HOUSE LATERALS | 8-28 |

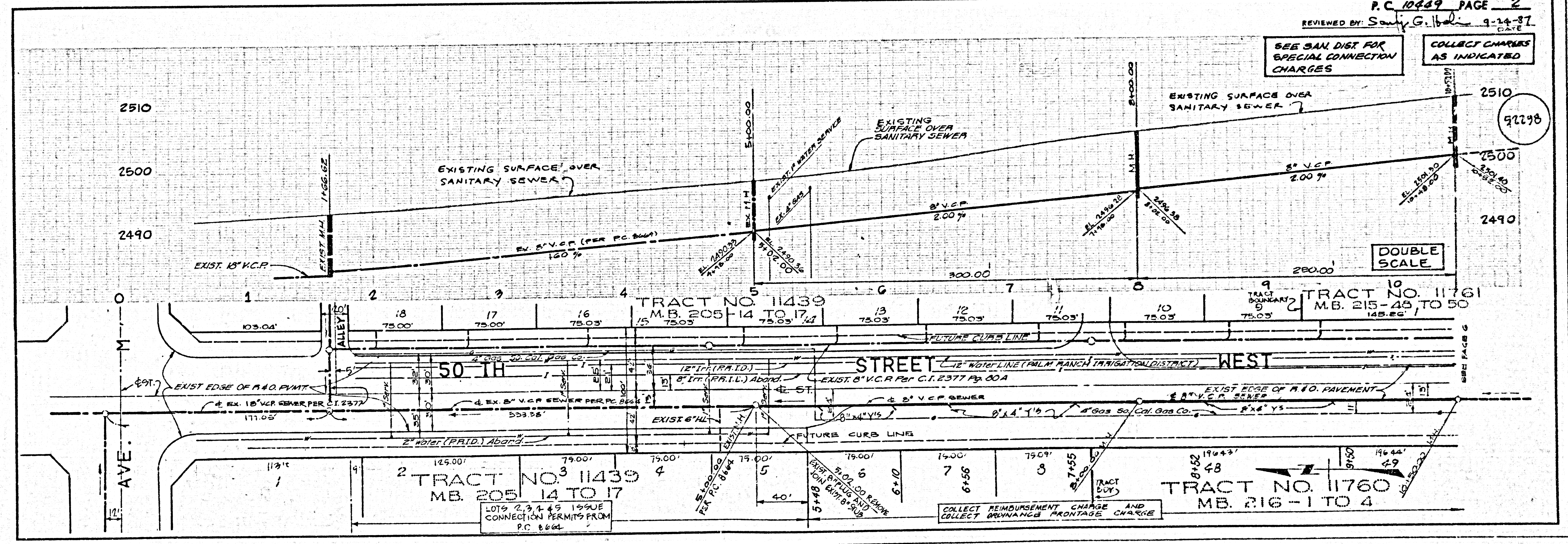
COUNTY OF LOS ANGELES, CALIFORNIA

THOMAS A. TIDEMANSON
 DIRECTOR OF PUBLIC WORKS
 APPROVED: 9/24/87

CHARLES W. CANNON, CHIEF ENGINEER
 COUNTY OF LOS ANGELES
 APPROVED: 9/29/87

CHECKED: 9/22/87
 DATE

ANTelope VALLEY BLDG. DIST. 22



SEE SAN. DIST. FOR SPECIAL CONNECTION CHARGES

COLLECT CHARGES AS INDICATED

DOUBLE SCALE

TRACT NO. 11439
 M.B. 205-14 TO 17

TRACT NO. 11761
 M.B. 215-45 TO 50

TRACT NO. 11760
 M.B. 216-1 TO 4

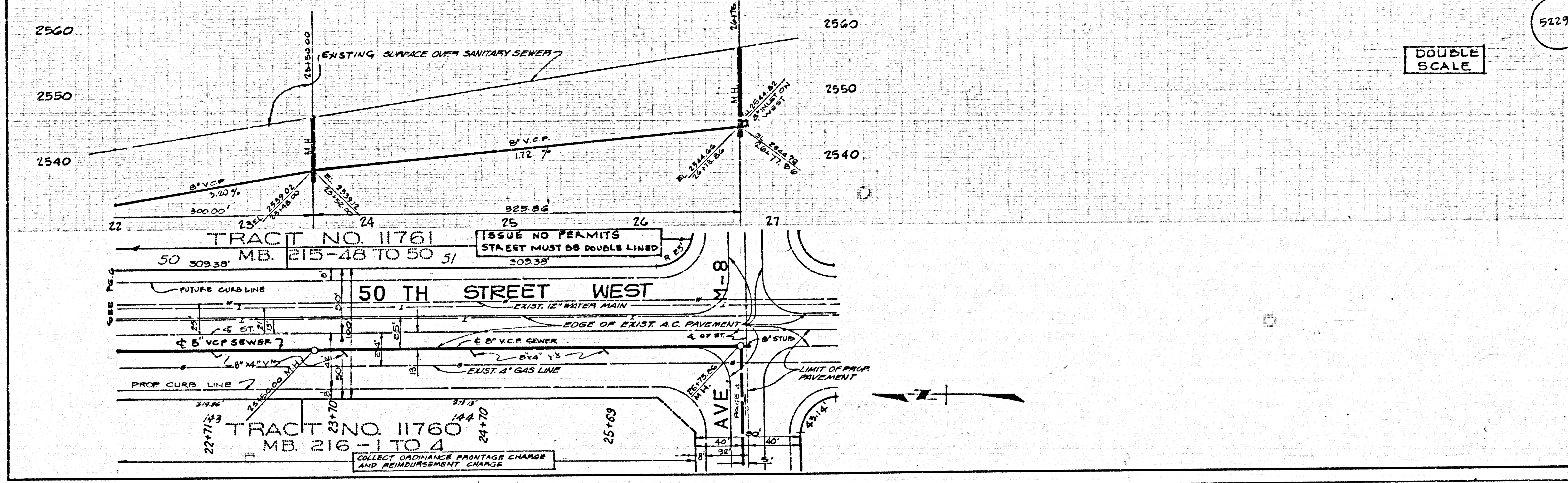
COLLECT REIMBURSEMENT CHARGE AND COLLECT PRORATE FRONTAGE CHARGE

64401 29

157575.0M RT

84-528

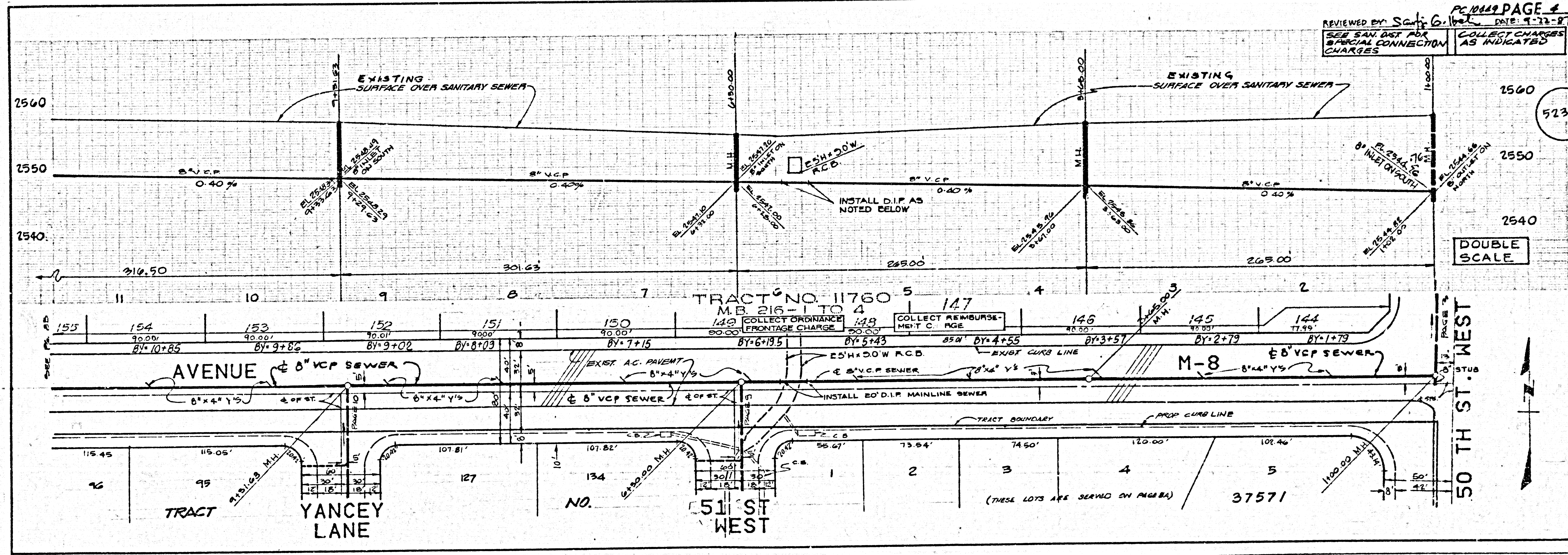
PC 10649 PAGE 3
REVIEWED BY: Scott G. [Signature] DATE: 9-22-87
SEE SAN DIST FOR SPECIAL CONNECTION CHARGES
COLLECT CHARGES AS INDICATED



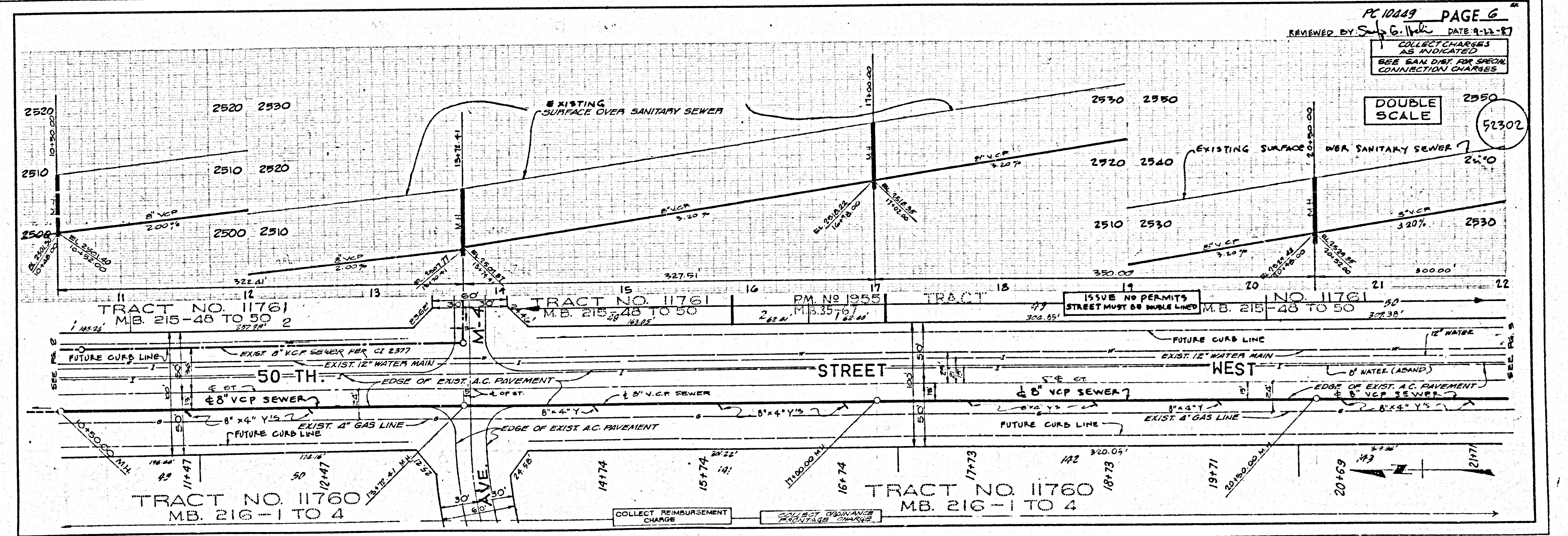
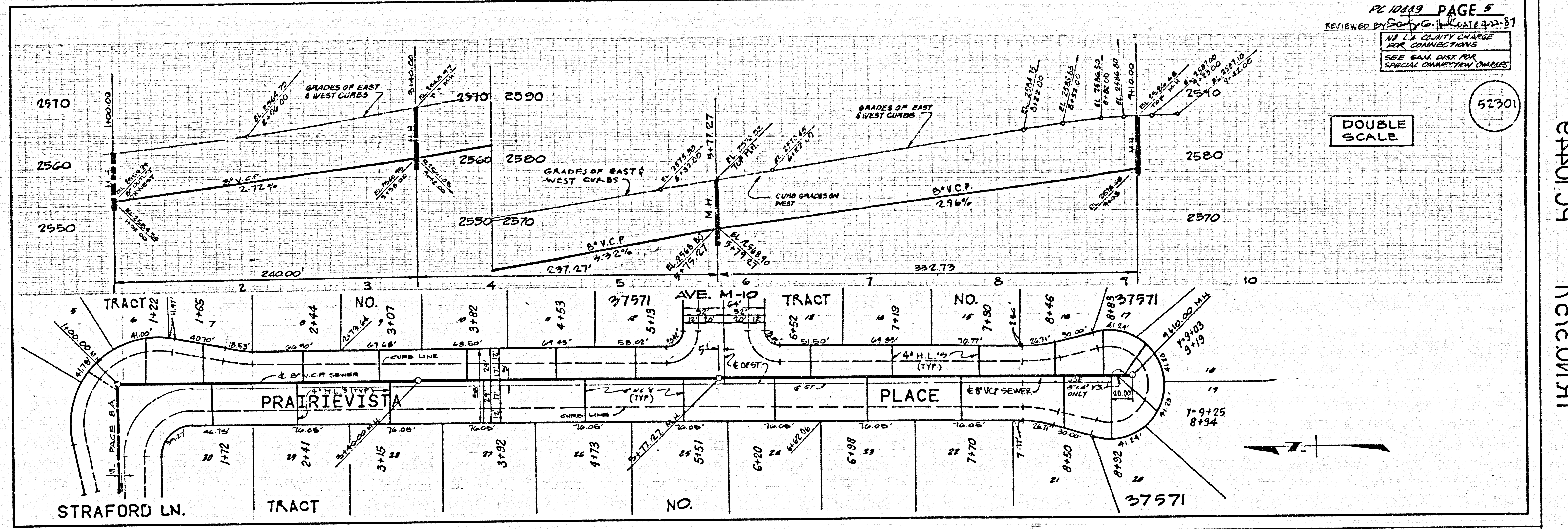
52299

CP401 09
15755 0M.9T

PC 10649 PAGE 4
REVIEWED BY: Scott G. [Signature] DATE: 9-22-87
SEE SAN DIST FOR SPECIAL CONNECTION CHARGES
COLLECT CHARGES AS INDICATED

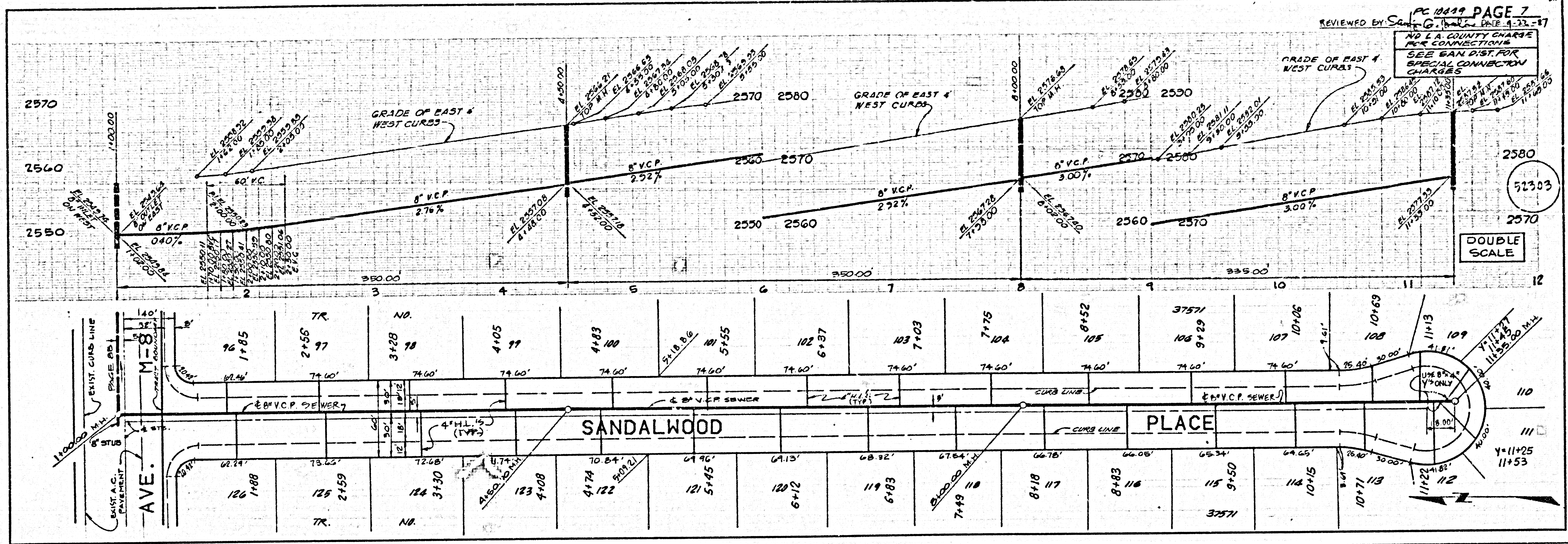


52300

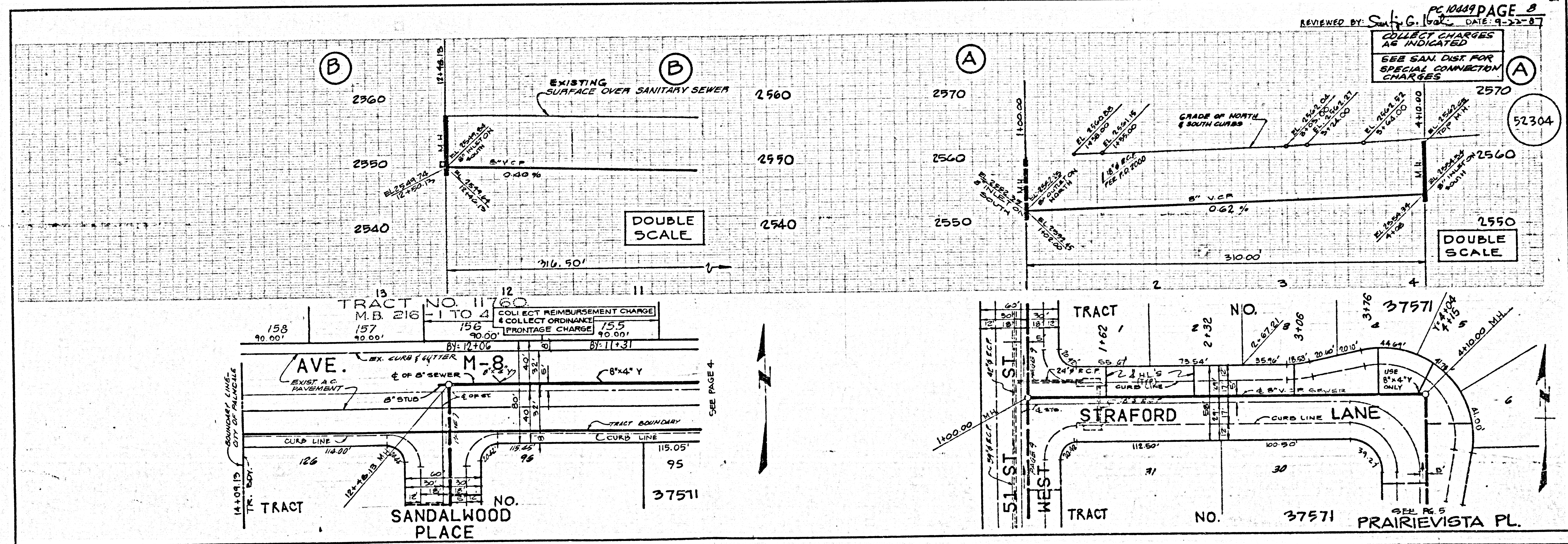


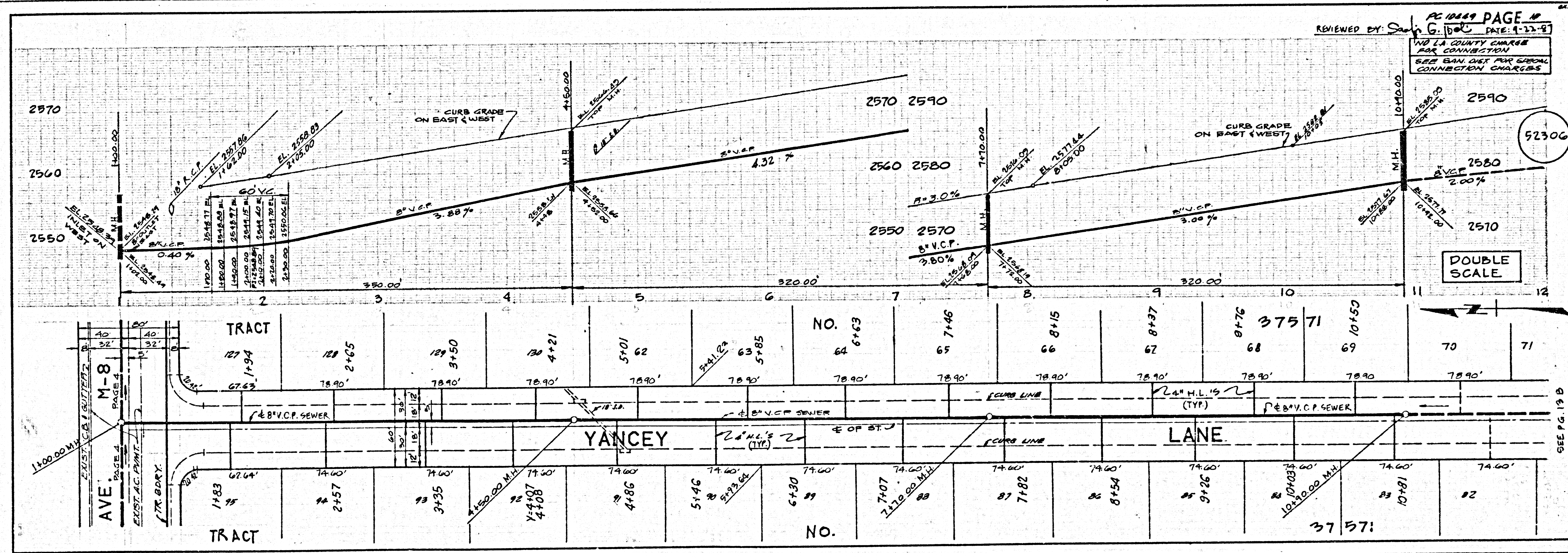
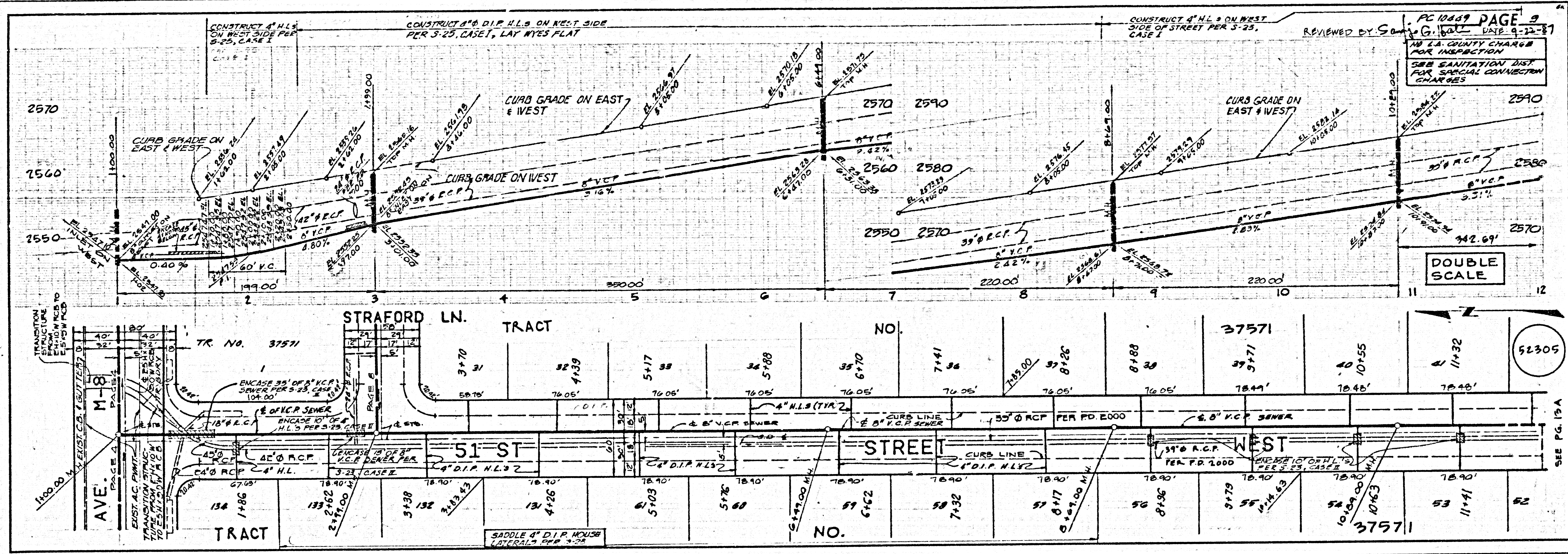
52301
52302

52301
52302



CP40109
TYPE ON AT

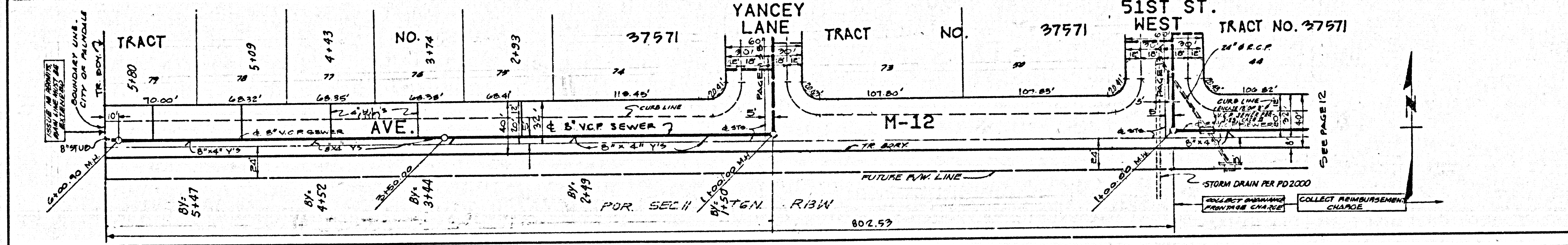
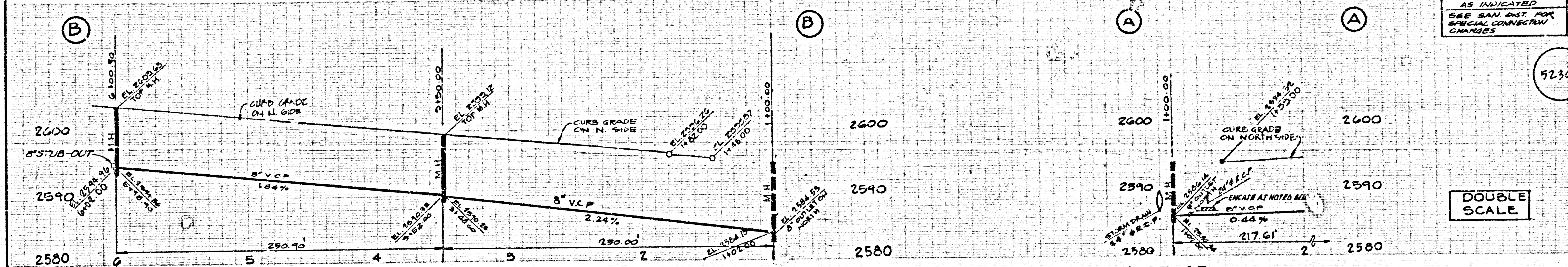




52305
52306

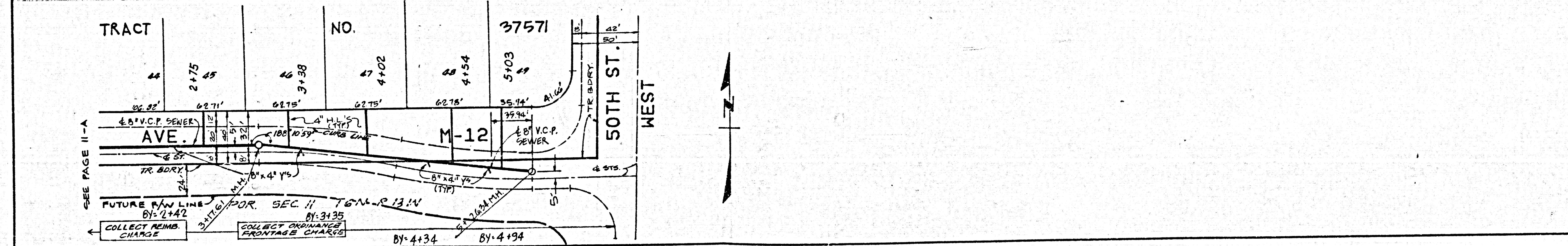
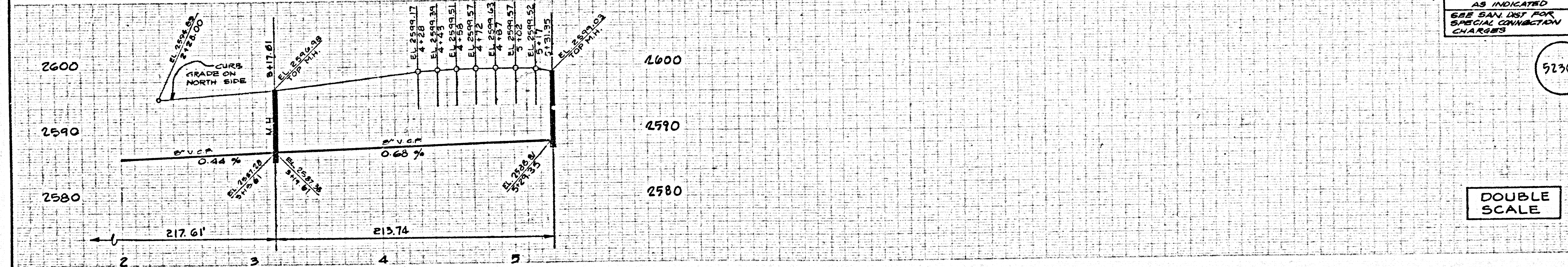
COLLECT CHARGES AS INDICATED
SEE SAN LIST FOR SPECIAL CONNECTION CHARGES

52307



COLLECT CHARGES AS INDICATED
SEE SAN LIST FOR SPECIAL CONNECTION CHARGES

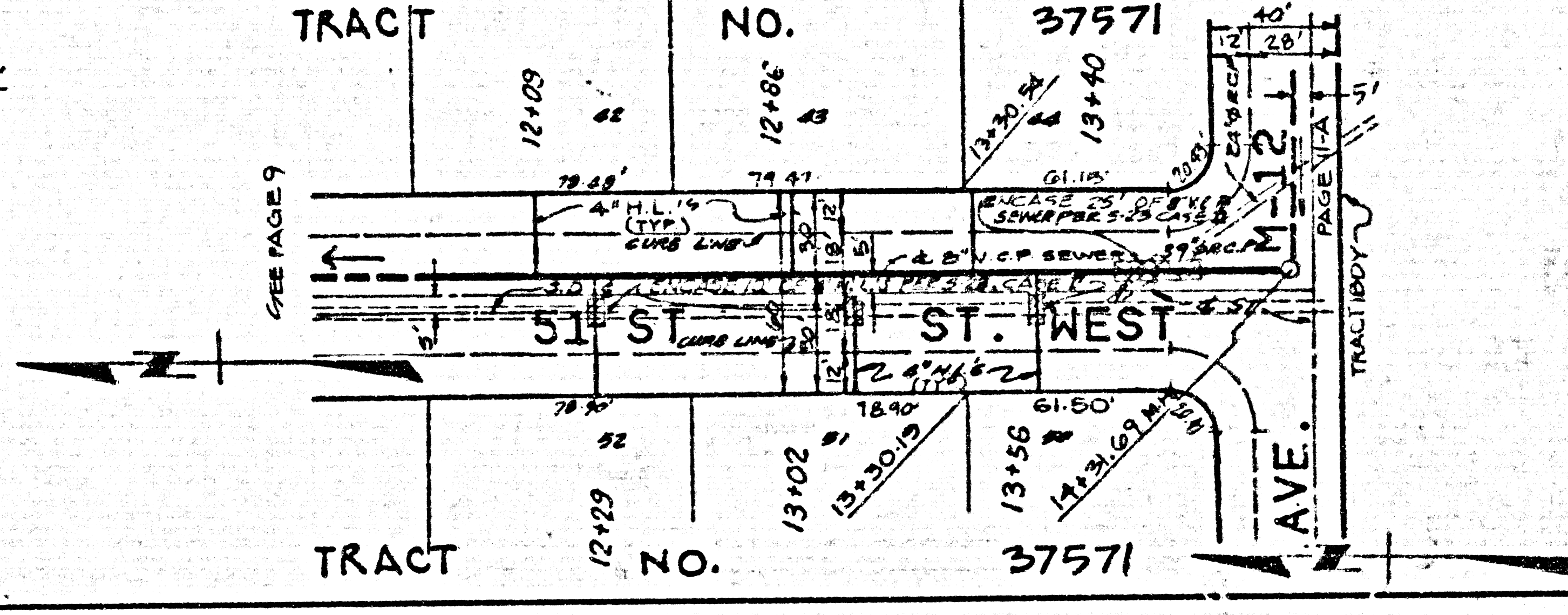
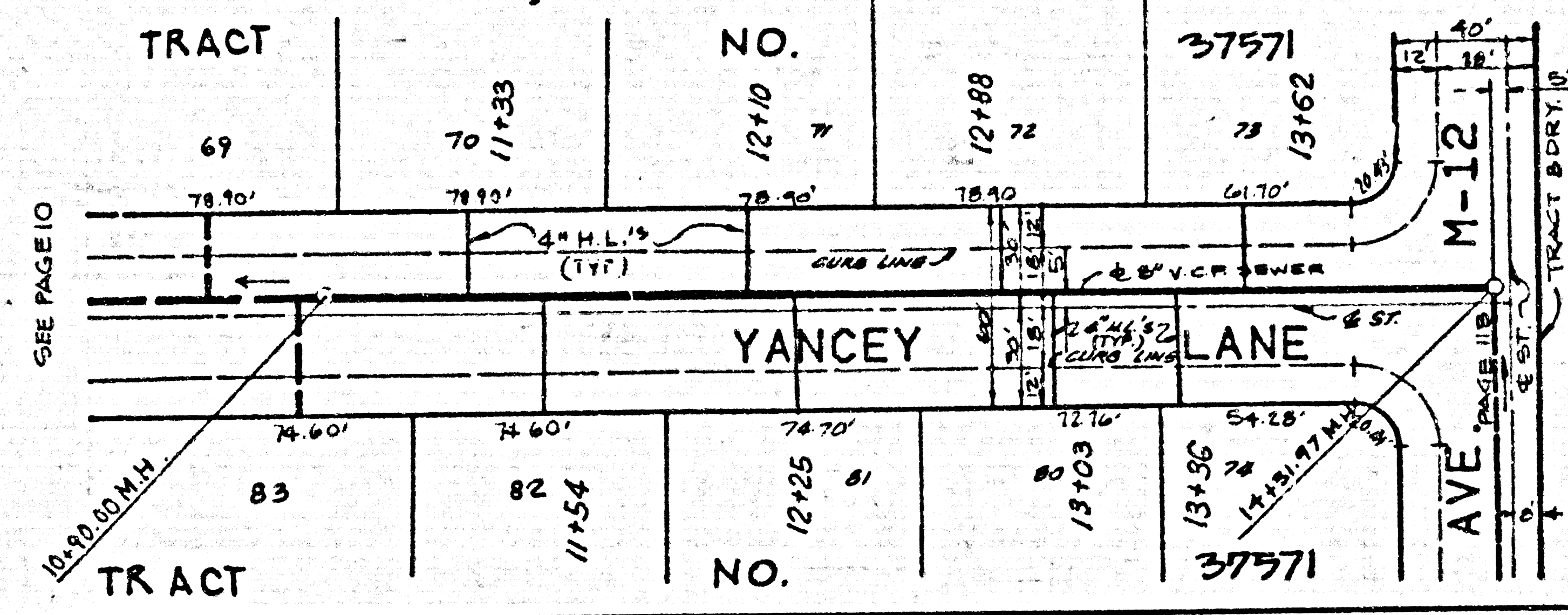
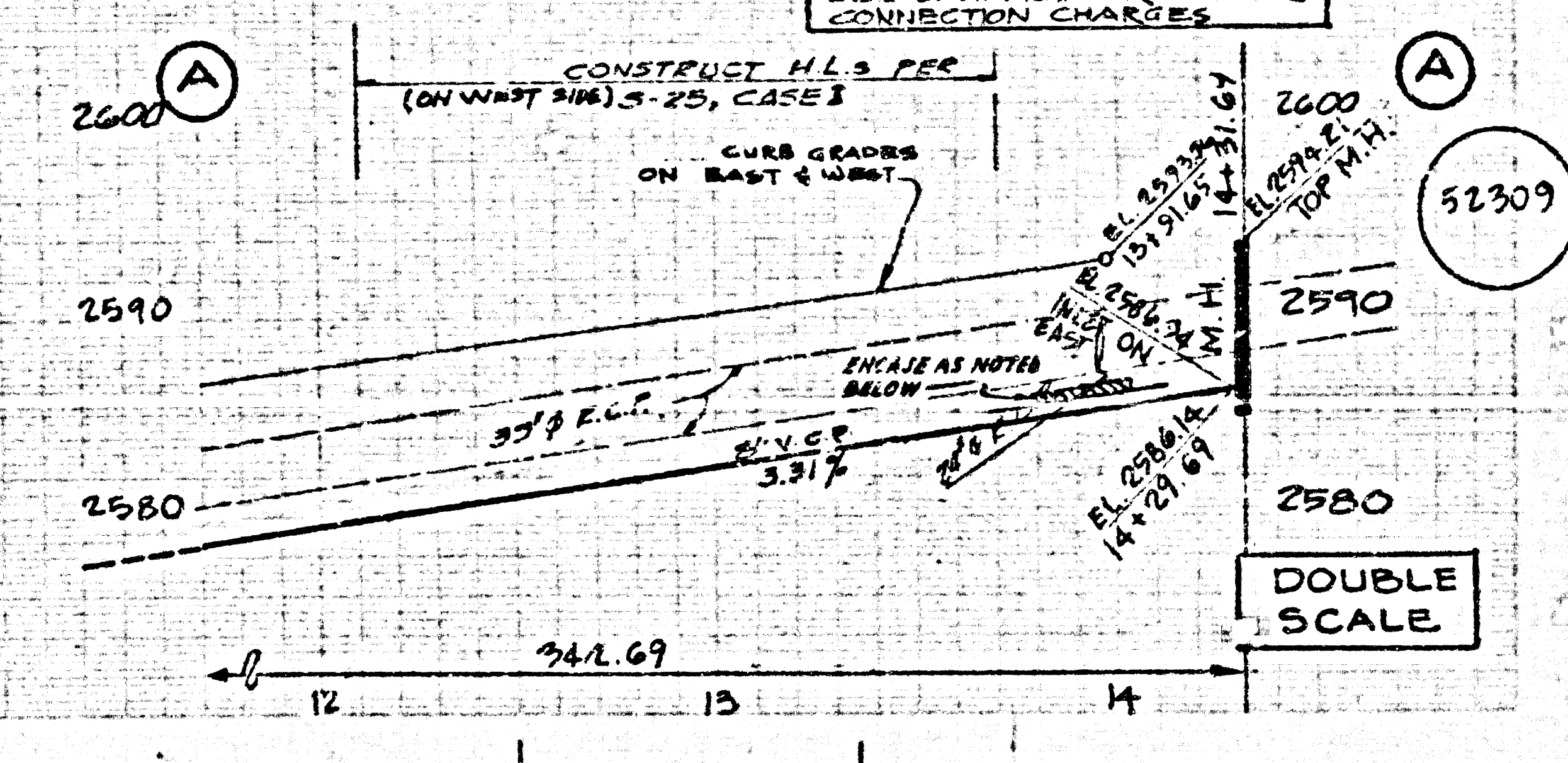
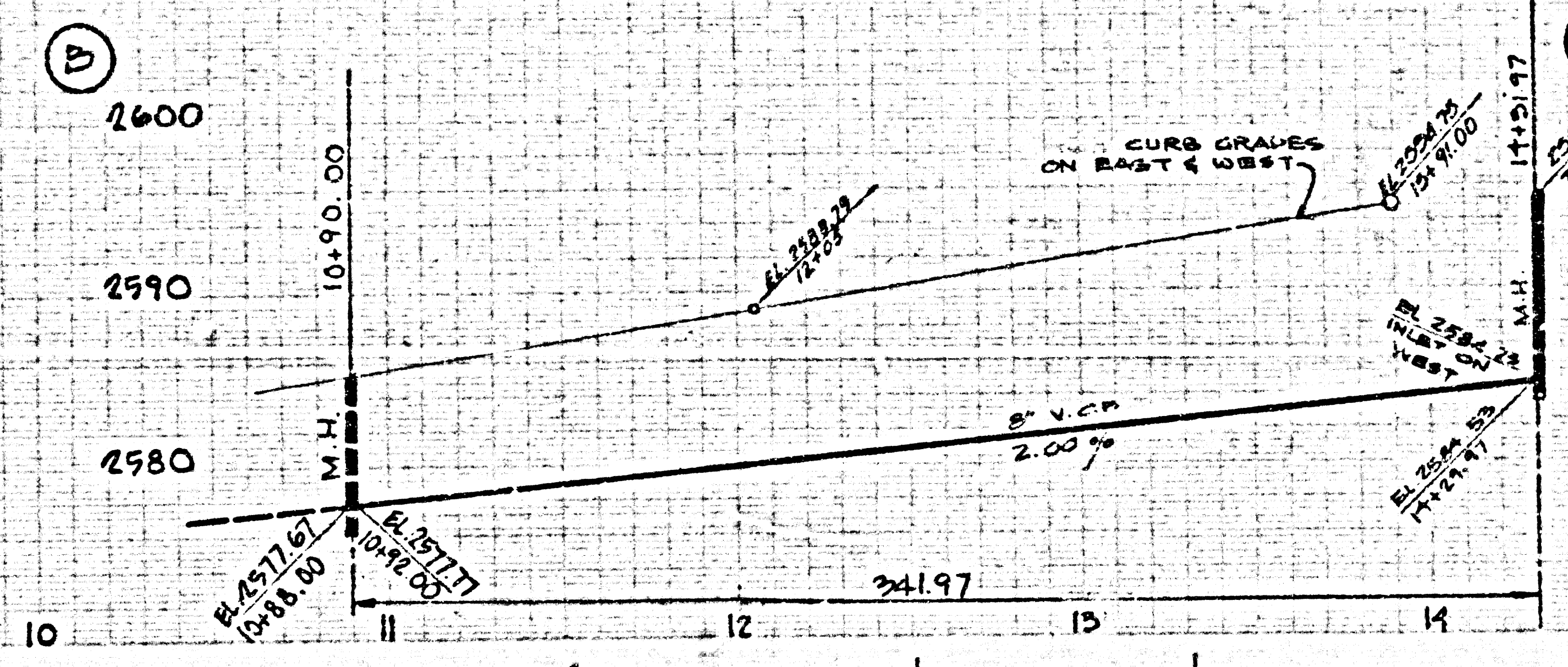
52308



6401 09 17375 ON RT

REVIEWED BY: *Scott G. Baker* PC 10443 PAGE 13 DATE 9-22-87

NO L.A. COUNTY CHARGE FOR CONNECTION SEE SAN DIST FOR SPECIAL CONNECTION CHARGES



PAGE

CP40139 1525.0M.5T