

# SANITARY SEWERS

TO BE CONSTRUCTED IN  
TRACT NO. 43723

PRIVATE CONTRACT NO. 10456  
U-23, B-6

1 SHEET ; 2 PAGES

53253

SCALE: HORIZ 1"=40' VERT 1"=4'  
JUNE 12, 1985

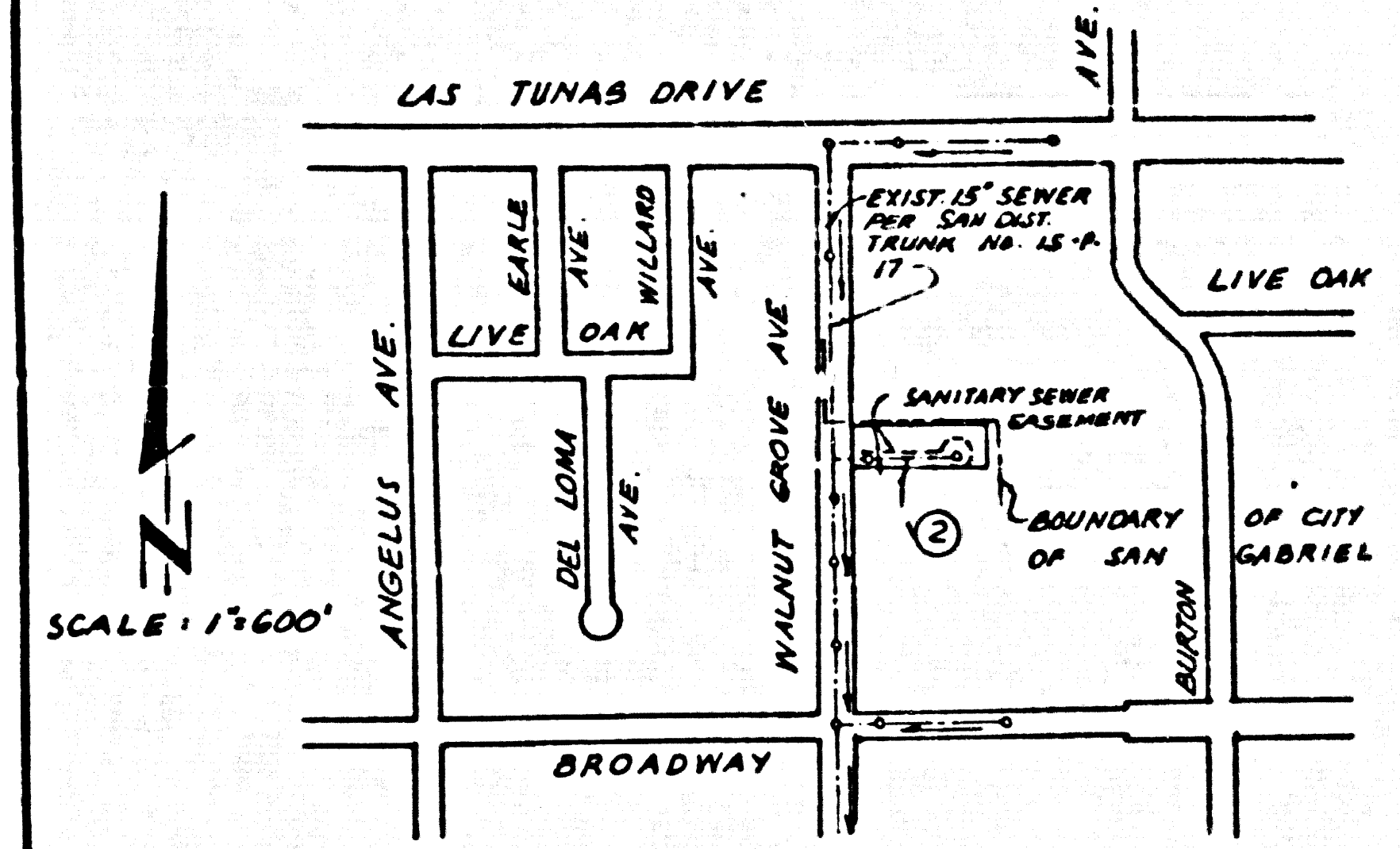
PREPARED IN THE OFFICES OF  
G POWERS & ASSOCIATES, INC.  
24654 ARCH ST., NEWHALL, CA 91321 TEL 805-254-0858

BY *Gordon N. Powers*  
GORDON N. POWERS REG. C.E. NO. 32077

THE FOLLOWING LATEST REVISIONS ARE ON FILE IN THE OFFICE OF THE DEPARTMENT OF PUBLIC WORKS. THESE REVISIONS SHALL APPLY TO THE CONSTRUCTION OF THIS PROJECT.

REVISION	DATE	DESCRIPTION
1	5-1-85	APWA
2	5-1-85	MINIMUM PUBLIC SAFETY REQUIREMENTS
3	5-1-85	MINIMUM MANHOLE DEPTH
4	5-1-85	REVISIONS TO SANITARY SEWER
5	5-1-85	REVISIONS TO SANITARY SEWER
6	5-1-85	REVISIONS TO SANITARY SEWER
7	5-1-85	REVISIONS TO SANITARY SEWER
8	5-1-85	REVISIONS TO SANITARY SEWER
9	5-1-85	REVISIONS TO SANITARY SEWER
10	5-1-85	REVISIONS TO SANITARY SEWER
11	5-1-85	REVISIONS TO SANITARY SEWER
12	5-1-85	REVISIONS TO SANITARY SEWER
13	5-1-85	REVISIONS TO SANITARY SEWER
14	5-1-85	REVISIONS TO SANITARY SEWER
15	5-1-85	REVISIONS TO SANITARY SEWER
16	5-1-85	REVISIONS TO SANITARY SEWER
17	5-1-85	REVISIONS TO SANITARY SEWER
18	5-1-85	REVISIONS TO SANITARY SEWER
19	5-1-85	REVISIONS TO SANITARY SEWER
20	5-1-85	REVISIONS TO SANITARY SEWER
21	5-1-85	REVISIONS TO SANITARY SEWER
22	5-1-85	REVISIONS TO SANITARY SEWER
23	5-1-85	REVISIONS TO SANITARY SEWER
24	5-1-85	REVISIONS TO SANITARY SEWER
25	5-1-85	REVISIONS TO SANITARY SEWER
26	5-1-85	REVISIONS TO SANITARY SEWER
27	5-1-85	REVISIONS TO SANITARY SEWER
28	5-1-85	REVISIONS TO SANITARY SEWER
29	5-1-85	REVISIONS TO SANITARY SEWER
30	5-1-85	REVISIONS TO SANITARY SEWER
31	5-1-85	REVISIONS TO SANITARY SEWER
32	5-1-85	REVISIONS TO SANITARY SEWER
33	5-1-85	REVISIONS TO SANITARY SEWER
34	5-1-85	REVISIONS TO SANITARY SEWER
35	5-1-85	REVISIONS TO SANITARY SEWER
36	5-1-85	REVISIONS TO SANITARY SEWER
37	5-1-85	REVISIONS TO SANITARY SEWER
38	5-1-85	REVISIONS TO SANITARY SEWER
39	5-1-85	REVISIONS TO SANITARY SEWER
40	5-1-85	REVISIONS TO SANITARY SEWER
41	5-1-85	REVISIONS TO SANITARY SEWER
42	5-1-85	REVISIONS TO SANITARY SEWER
43	5-1-85	REVISIONS TO SANITARY SEWER
44	5-1-85	REVISIONS TO SANITARY SEWER
45	5-1-85	REVISIONS TO SANITARY SEWER
46	5-1-85	REVISIONS TO SANITARY SEWER
47	5-1-85	REVISIONS TO SANITARY SEWER
48	5-1-85	REVISIONS TO SANITARY SEWER
49	5-1-85	REVISIONS TO SANITARY SEWER
50	5-1-85	REVISIONS TO SANITARY SEWER
51	5-1-85	REVISIONS TO SANITARY SEWER
52	5-1-85	REVISIONS TO SANITARY SEWER
53	5-1-85	REVISIONS TO SANITARY SEWER
54	5-1-85	REVISIONS TO SANITARY SEWER
55	5-1-85	REVISIONS TO SANITARY SEWER
56	5-1-85	REVISIONS TO SANITARY SEWER
57	5-1-85	REVISIONS TO SANITARY SEWER
58	5-1-85	REVISIONS TO SANITARY SEWER
59	5-1-85	REVISIONS TO SANITARY SEWER
60	5-1-85	REVISIONS TO SANITARY SEWER
61	5-1-85	REVISIONS TO SANITARY SEWER
62	5-1-85	REVISIONS TO SANITARY SEWER
63	5-1-85	REVISIONS TO SANITARY SEWER
64	5-1-85	REVISIONS TO SANITARY SEWER
65	5-1-85	REVISIONS TO SANITARY SEWER
66	5-1-85	REVISIONS TO SANITARY SEWER
67	5-1-85	REVISIONS TO SANITARY SEWER
68	5-1-85	REVISIONS TO SANITARY SEWER
69	5-1-85	REVISIONS TO SANITARY SEWER
70	5-1-85	REVISIONS TO SANITARY SEWER
71	5-1-85	REVISIONS TO SANITARY SEWER
72	5-1-85	REVISIONS TO SANITARY SEWER
73	5-1-85	REVISIONS TO SANITARY SEWER
74	5-1-85	REVISIONS TO SANITARY SEWER
75	5-1-85	REVISIONS TO SANITARY SEWER
76	5-1-85	REVISIONS TO SANITARY SEWER
77	5-1-85	REVISIONS TO SANITARY SEWER
78	5-1-85	REVISIONS TO SANITARY SEWER
79	5-1-85	REVISIONS TO SANITARY SEWER
80	5-1-85	REVISIONS TO SANITARY SEWER
81	5-1-85	REVISIONS TO SANITARY SEWER
82	5-1-85	REVISIONS TO SANITARY SEWER
83	5-1-85	REVISIONS TO SANITARY SEWER
84	5-1-85	REVISIONS TO SANITARY SEWER
85	5-1-85	REVISIONS TO SANITARY SEWER
86	5-1-85	REVISIONS TO SANITARY SEWER
87	5-1-85	REVISIONS TO SANITARY SEWER
88	5-1-85	REVISIONS TO SANITARY SEWER
89	5-1-85	REVISIONS TO SANITARY SEWER
90	5-1-85	REVISIONS TO SANITARY SEWER
91	5-1-85	REVISIONS TO SANITARY SEWER
92	5-1-85	REVISIONS TO SANITARY SEWER
93	5-1-85	REVISIONS TO SANITARY SEWER
94	5-1-85	REVISIONS TO SANITARY SEWER
95	5-1-85	REVISIONS TO SANITARY SEWER
96	5-1-85	REVISIONS TO SANITARY SEWER
97	5-1-85	REVISIONS TO SANITARY SEWER
98	5-1-85	REVISIONS TO SANITARY SEWER
99	5-1-85	REVISIONS TO SANITARY SEWER
100	5-1-85	REVISIONS TO SANITARY SEWER

B.M. CG 679 ELEV 399.83  
L.I.T. S. EDGE CONCRETE WALK 5 FEET FROM END 30 FEET S & BROADWAY 35 FEET W. & WALNUT GROVE AVENUE.  
ARCADIA QUAD. 19.75



INDEX MAP  
TRACT NO. 43723  
P.C. 10456  
SCALE: 1"=600'

NOTE:  
NUMBERS IN CIRCLE INDICATES PAGE NUMBER

REVISION NO. 1 DATE: 1-30-86

PAGE 2 RAISE ELEVATIONS OF SEWER LINE FROM STATION 1+50.00 TO 4+30.00, CHANGE THE GRADE OF SEWER LINE FROM STATION 1+00.00 TO 1+50.00.

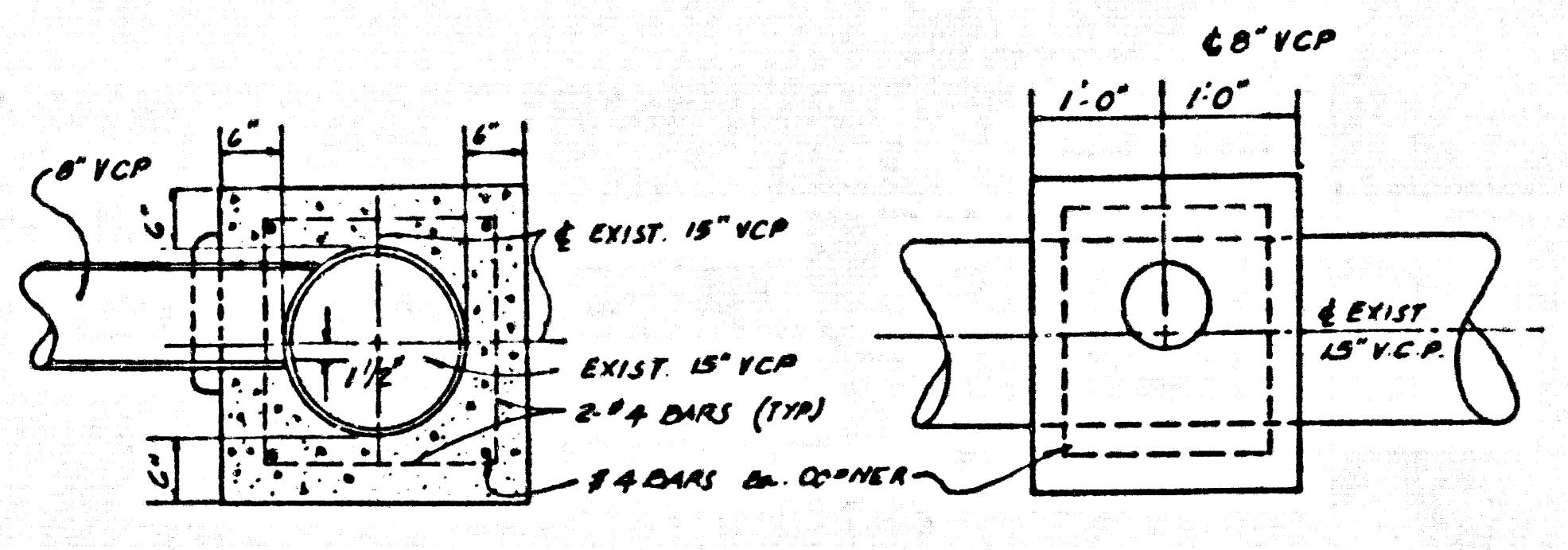
APPROVED: *Sally G. Ibel*  
DEPT. OF PUBLIC WORKS

### GENERAL NOTES: CONT.

12. ALL REFERENCES ON THIS PLAN TO THE COUNTY ENGINEER, THE ROAD DEPARTMENT, OR THE FLOOD CONTROL DISTRICT SHALL APPLY TO THOSE APPROPRIATE SECTIONS OF THE DEPARTMENT OF PUBLIC WORKS.

### CONSTRUCTION NOTES: CONT.

10. WYE BRANCHES MAY BE USED FOR CONNECTIONS TO THE MAIN LINE SEWER IF A.B.S.C.P. IS USED.  
11. ALL JOINTS BETWEEN CAST IRON PIPE AND A.B.S.C.P. SHALL BE MADE WITH APPROVED FITTINGS.  
16. FULL COMPLIANCE WITH PART 4 OF THE SPECIAL PROVISION IS REQUIRED FOR THE INSTALLATION OF A.B.S. COMPOSITE PIPE.



SECTION PLAN  
CONCRETE COLLAR DETAIL  
NOT TO SCALE

### CONSTRUCTION NOTES: CONT.

17. MANHOLE WATER STOP GASKETS AND CLAMPS ARE REQUIRED FOR THE CONNECTION OF A.B.S. COMPOSITE PIPE TO MANHOLE STRUCTURES.  
18. A.B.S. SOLID WALL PIPE MUST BE USED FOR WYE AND HOUSE LATERAL CONNECTIONS TO A.B.S. COMPOSITE MAIN LINE SEWER PIPE.  
19. A.B.S. C.P. SHALL BE BEDDED IN CONFORMANCE WITH THE TABLE AND SECTION B-3.1 OF THE SPECIAL PROVISIONS.  
20. 3" DEFLECTION COUPLERS SHALL BE USED TO ACCOMPLISH OF RADII OF CURVATURE LESS THAN 300 FEET.

NO CONNECTION FOR THE DISPOSAL OF INDUSTRIAL WASTE SHALL BE MADE TO SEWERS SHOWN ON THIS DRAWING UNTIL A PERMIT FOR INDUSTRIAL WASTE WATER DISCHARGE HAS BEEN ISSUED BY THE SANITATION DISTRICTS FOR SAID CONNECTION.

BEFORE BREAKING INTO OR CONSTRUCTION ON A COUNTY SANITATION DISTRICT SEWER AND PRIOR TO FINAL ACCEPTANCE OF THE PROJECT, SANITATION DISTRICT INSPECTOR SHALL BE NOTIFIED BY PHONE (818) 962-8605 SO THAT REQUIRED INSPECTION CAN BE MADE.

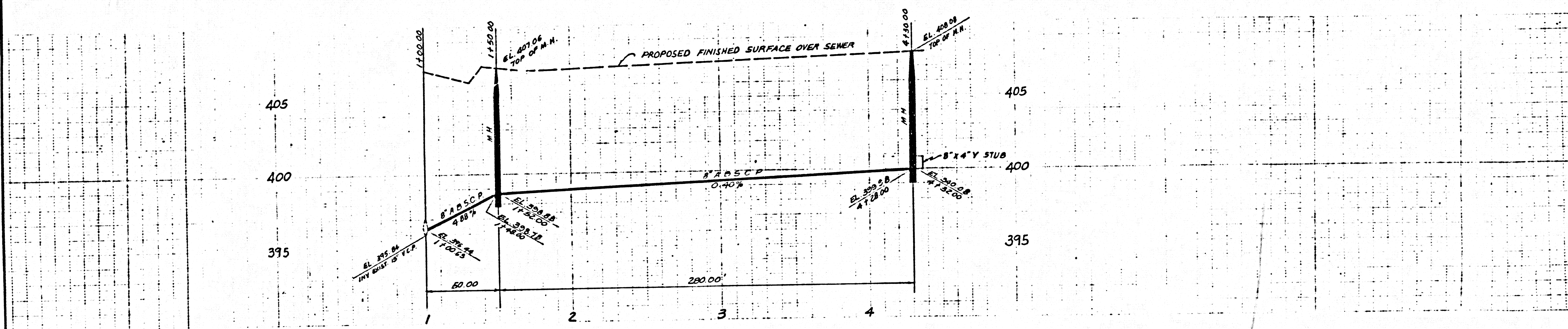
### GENERAL NOTES:

- ELEVATIONS ARE IN FEET ABOVE U.S.C. & G.S. SEA LEVEL DATUM OF 1929.
- NO REVISIONS SHALL BE MADE IN THESE PLANS WITHOUT THE APPROVAL OF THE DEPARTMENT OF PUBLIC WORKS.
- NO REPRESENTATIVE OF THE DEPARTMENT OF PUBLIC WORKS WILL SURVEY OR LAY OUT ANY PORTION OF THE WORK.
- UNLESS OTHERWISE SPECIFIED, ALL DIMENSIONS ARE TO BE SHOWN ON PLANS AND PROFILES. GRADE POINTS FOR TOP OF CURBS, CENTERLINE OF STREETS OR CENTERLINE OF ALLEYS ARE SHOWN BY CIRCLES ON PROFILES. ALL POINTS BETWEEN DESIGNATED POINTS SHALL BE ESTABLISHED SO AS TO CONFORM TO A STRAIGHT LINE DRAWN BETWEEN SAID DESIGNATED POINTS.
- THE PRIVATE ENGINEER SHALL FURNISH THE DEPARTMENT OF PUBLIC WORKS WITH GRADE SHEETS AND STATIONING FOR ALL HOUSE LATERALS AND "Y" OR "T" BRANCHES AND SHALL PROVIDE STAKES FOR THE MAIN LINE SEWER LOCATIONS WITH STATIONING PLAINLY MARKED. ALL HOUSE LATERALS SHALL BE CONSTRUCTED AT RIGHT ANGLES FROM THE MAIN LINE SEWER UNLESS OTHERWISE SPECIFIED AS SHOWN IN THE PLANS. HOUSE LATERALS FROM CHIMNEYS SHALL NOT HAVE AN ANGLE OF LESS THAN 45° WITH THE MAIN LINE SEWER. ANY CHANGE IN ALIGNMENT SHALL BE REQUESTED IN WRITING BY THE PRIVATE ENGINEER.
- THE PRIVATE ENGINEER SHALL FURNISH THE HOUSE LATERAL DEPTH AT THE PROPERTY LINE BELOW THE TOP OF CURB ELEVATION FOR EACH HOUSE LATERAL ON THE GRADE SHEET.
- IF SOME WORK CAN BE STARTED THE CONTRACTOR MUST OBTAIN A PERMIT TO OCCUPY COUNTY STREETS FROM THE L.A. COUNTY ROAD DEPT. DISTRICTS FOR THE WORK AND PAY FEE TO THE DEPARTMENT OF PUBLIC WORKS, 550 S. VERMONT AVENUE, LOS ANGELES, CA 90005 TO COVER THE COST OF CONSTRUCTION INSPECTION AND RECORD PLANS.
- IF WORK IS TO BE DONE IN A STATE HIGHWAY A PERMIT MUST BE OBTAINED FROM THE STATE OF CALIFORNIA, DIVISION OF HIGHWAYS, 120 SOUTH SPRING STREET, LOS ANGELES, CALIFORNIA.
- APPROVAL OF THIS PLAN BY THE COUNTY OF LOS ANGELES DOES NOT CONSTITUTE A REPRESENTATION AS TO THE ACCURACY OF THE LOCATION OF OR THE EXISTENCE OR NON-EXISTENCE OF ANY UNDERGROUND UTILITY PIPE, LINES OR MANHOLES WITHIN THE LIMITS OF THIS PROJECT. THIS NOTE APPLIES TO ALL PAGES.
- REFER TO SECTION 7 OF THE STANDARD SPECIFICATIONS REGARDING SAFETY ORDERS.
- IN ORDER TO BE ELIGIBLE FOR THE CONTRACTOR SHALL OBTAIN AND FILE WITH THE DEPARTMENT OF PUBLIC WORKS, CLIPES OF A PERMIT TO OCCUPY COUNTY STREETS FROM THE LOS ANGELES COUNTY ROAD DEPARTMENT. A PERMIT FOR EXCAVATIONS AND TRENCHES FROM THE STATE OF CALIFORNIA, DIVISION OF INDUSTRIAL SAFETY AND A CERTIFICATE OF WORKERS COMPENSATION INSURANCE WITH THE DEPARTMENT OF PUBLIC WORKS, 550 S. VERMONT AVENUE, LOS ANGELES, CALIFORNIA 90005, NAMED AS THE CERTIFICATE HOLDER TO BE NOTIFIED 30 DAYS PRIOR TO CANCELLATION OF POLICY.

### CONSTRUCTION NOTES:

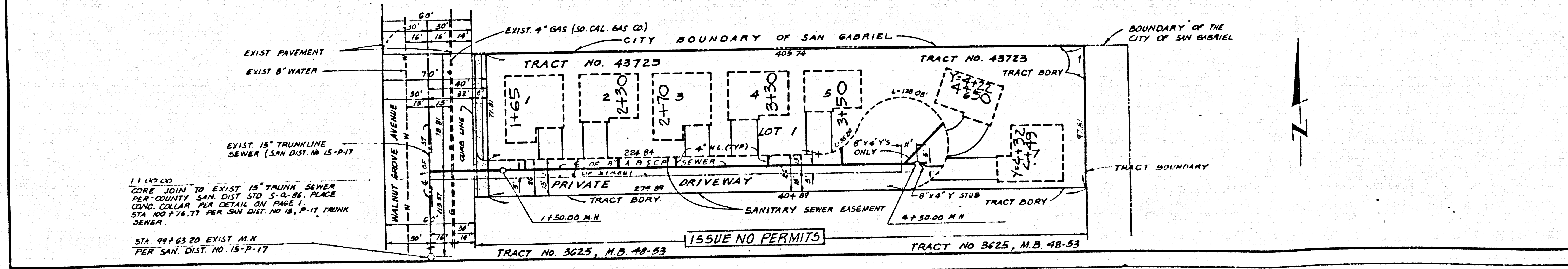
- WORK SHALL BE CONSTRUCTED ACCORDING TO THE STANDARD SPECIFICATIONS FOR PUBLIC WORKS CONSTRUCTION, 1984 EDITION AND COUNTY ENGINEER SPECIAL PROVISIONS FOR THE CONSTRUCTION OF SANITARY SEWERS DATED SEP 25, 1985 AND SHALL BE PROSECUTED ONLY IN THE PRESENCE OF THE DEPARTMENT OF PUBLIC WORKS.
- THE CONTRACTOR SHALL NOTIFY THE CONSTRUCTION DIVISION BY TELEPHONE 226-8221 AT LEAST TWENTY-FOUR HOURS BEFORE STARTING ANY WORK UNDER THIS CONTRACT.
- HOUSE LATERALS TO BE CONSTRUCTED WITH INVERTS AT PROPERTY LINE 8 FEET BELOW CURB GRADE EXCEPT AS NOTED.
- WYE OR TEE BRANCHES MAY BE USED FOR CONNECTIONS TO MAINLINE SEWERS EXCEPT AS NOTED.
- ALL STRUCTURES SHALL BE EITHER BRICK MANHOLES PER S-30 OR PRECAST CONCRETE MANHOLES PER S-36 EXCEPT AS NOTED.
- PROVIDE STAKES ON THE PROPERTY LINE OR PROPERTY LINES PRODUCED AT RIGHT ANGLES TO THE SEWER LINE AT THE CENTERLINE OF EACH MANHOLE.
- MANHOLE TOPS IN UNIMPROVED RIGHTS OF WAY TO BE SIX INCHES ABOVE FINISHED GRADE.
- WITHELD CLAY PIPE JOINTS SHALL BE TYPE "D" OR "E" PER STANDARD SPECIFICATIONS SECTION 208-2.
- A POWER POLE IS WITHIN THREE FEET OF THE SEWER THE SEWER SHALL BE ENCASED PER S-23 CASE II TWO FEET ON EACH SIDE FROM THE POINT OF INTERFERENCE.
- IF DURING THE COURSE OF CONSTRUCTION IT IS DETERMINED THAT THE PIPE IS LESS THAN FOUR FEET COVER OVER THE TOP OF A MAINLINE OR HOUSE LATERAL SEWER IN WHICH IS NOT INDICATED ON THE PLANS, THE PIPE SHALL BE ENCASED PER S-23 CASE II UNLESS OTHERWISE APPROVED BY THE DEPARTMENT OF PUBLIC WORKS.
- SEE SECTION 7 OF THE STANDARD SPECIFICATIONS FOR THE CONSTRUCTION OF SANITARY SEWERS DATED SEP 25, 1985 FOR THE REQUIREMENTS FOR TESTING PER SECTION 208-4 OF THE STANDARD SPECIFICATIONS AND SPECIAL PROVISIONS.
- SEWERS TO BE TESTED FOR LEAKAGE PER SECTION 208-4 OF THE STANDARD SPECIFICATIONS AND SPECIAL PROVISIONS IN ACCORDANCE WITH PERMITS.
- RESURFACE ALL TRENCHES WITHIN PAVED AREAS TO MEET L.A. COUNTY ROAD DEPT OR CALIFORNIA STATE HIGHWAY REQUIREMENTS IN ACCORDANCE WITH PERMITS.
- FULL COMPLIANCE WITH SECTION 208-1.3.3 OF THE SPECIAL PROVISIONS WILL BE REQUIRED FOR BACKFILL IN STREETS. CERTIFICATION OF BACKFILL COMPACTION AND SAND EQUIVALENTS BY A QUALIFIED, REGISTERED TESTING LABORATORY SHALL BE PROVIDED BY THE PERMITTEE PRIOR TO THE ISSUANCE OF A CERTIFICATE OF PARTIAL ACCEPTANCE.
- SPECIAL BACKFILL IN EXISTING CONSTRUCTION (IN BACKFILL TRENCH AND IN PLACE OF THE EARTH) SO AS TO ACHIEVE THE NATURAL OR FINISHED GRADES AND SLOPES SHOWN ON THE GRADING PLAN. APPROVED FOR THIS DEVELOPMENT BY THE BUILDING AND SAFETY DIVISION IN ALL BACKFILL AND EARTH REPLACED SHALL BE COMPACTED TO A MINIMUM OF 90% OF MAXIMUM DENSITY PER A.S.T.M. METHOD OF TEST D1557 AS MODIFIED. ACCEPTABLE CERTIFICATION OF SUCH COMPACTION SHALL BE SUBMITTED TO "CONSTRUCTION DIVISION".

COUNTY OF LOS ANGELES, CALIFORNIA  
CHARLES W. CARRY  
CHIEF ENGINEER  
APPROVED: *Gordon N. Powers* 1/16/86  
APPROVED: *Sally G. Ibel* 1-7-86  
CHECKED: *Sally G. Ibel* 1-7-86  
REG. C.E. NO. 33134  
REVISION  
JAN 20 1986  
TEMPLE CITY BLDG. DIST. 5



NO L.A. CO. CHARGE FOR CONNECTION  
SEE SAN. DIST. FOR SPECIAL CONNECTION CHARGES

53754



1.1 (4) (C) CORE JOIN TO EXIST 15" TRUNK SEWER PER COUNTY SAN. DIST. STD. S-10-86. PLACE CONC. COLLAR. FOR DETAIL ON PAGE 1. STA 1+00.76 TO 1+50.00 PER SAN. DIST. NO. 15-P-17 TRUNK SEWER.  
STA 9+463.20 EXIST M.H. PER SAN. DIST. NO. 15-P-17

REVISION  
JAN 30 1986