

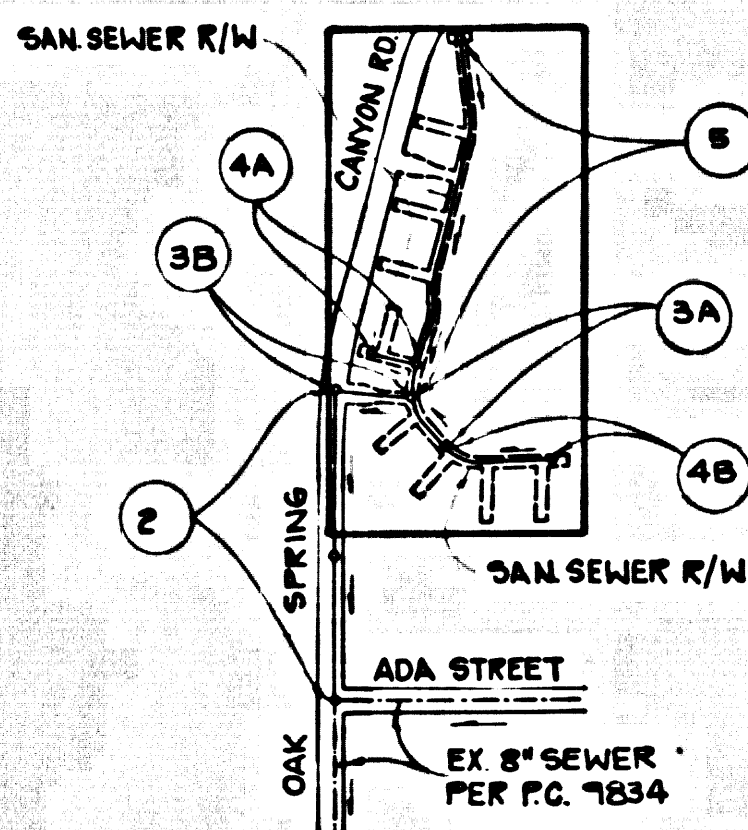
B.M. CL 4825 - ELEV. 1564.112
 L.R.C.E. TAG # 15075 TO BOLEDAO
 CYN RD. 1 FT. E/O COR AT SE COR OAK
 SPRINGS RD (N.W. COR CD) 42 FT. S &
 42 FT. S/O C/L INT.
 NEWHALL QUAD. 15 83

DOUBLE SCALE

CONSTRUCTION NOTES: (CONT)

16. WYE BRANCHES ONLY MAY BE USED FOR CONNECTIONS TO MAIN LINE SEWER IF A.B.S.C.P. IS USED.
17. ALL JOINT BETWEEN CAST IRON PIPE AND A.B.S.C.P. SHALL BE MADE WITH APPROVED FITTINGS.
18. FULL COMPLIANCE WITH PART IV. OF THE SPECIAL PROVISIONS IS REQUIRED FOR THE INSTALLATION OF A.B.S. COMPOSITE PIPE AND A.B.S. SOLID WALL HOUSE LATERALS.
19. MANHOLE WATER STOP WASSETS AND CLAMPS ARE REQUIRED FOR THE CONNECTION OF A.B.S. COMPOSITE PIPE TO MANHOLE STRUCTURES.
20. A.B.S. SOLID WALL PIPE MUST BE USED FOR WYE AND HOUSE LATERAL CONNECTIONS TO A.B.S. COMPOSITE MAINLINE SEWER PIPE.
21. 3 DEGREE DEFLECTION COUPLERS SHOULD BE USED TO ACCOMPLISH RADIUS OF CURVATURE LESS THAN 385'.
22. A.B.S. COMPOSITE PIPE SHALL BE BEDDED IN CONFORMANCE WITH THE TABLE IN SECTION 8-31 OF PART IV. OF SPECIAL PROVISIONS.

NOTE: NUMBERS IN CIRCLES INDICATE PAGE NUMBERS
 NOTE: SANITARY SEWERS ON PAGES 2A, 2B, 4A, 4B, AND 5 ARE IN SANITARY SEWER RIGHT-OF-WAY.



INDEX MAP
 PC No 10464
 TRACT No 43115
 SCALE 1" = 600'

REVISION NO. 1 DATE 1-4-83
 ADDED NOTE ON PAGE 2
 APPROVED *James Jinks* 12/1/82
 DEPT. OF PUBLIC WORKS / R.S. NO.

NO CONNECTION FOR THE DISPOSAL OF INDUSTRIAL WASTES SHALL BE MADE TO SEWERS SHOWN ON THESE DRAWINGS UNTIL A PERMIT FOR INDUSTRIAL WASTEWATER DISCHARGE HAS BEEN ISSUED BY THE SANITATION DISTRICTS FOR SAID CONNECTION.
 BEFORE BREAKING INTO OR CONSTRUCTION ON A COUNTY SANITATION DISTRICT SEWER AND PRIOR TO FINAL ACCEPTANCE OF THE PROJECT, SANITATION DISTRICT INSPECTOR SHALL BE NOTIFIED BY PHONE (805) 947-5027 SO THAT REQUIRED INSPECTION CAN BE MADE.

GENERAL NOTES:

1. ELEVATIONS ARE IN FEET ABOVE U.S.C. & G.S. SEA LEVEL DATUM OF 1988.
2. NO REVISIONS SHALL BE MADE IN THESE PLANS WITHOUT THE APPROVAL OF THE DIRECTOR OF PUBLIC WORKS.
3. NO REPRESENTATIVE OF THE DEPT. OF PUBLIC WORKS WILL SURVEY OR LAY OUT ANY PORTION OF THE WORK.
4. GRADES TO WHICH THIS IMPROVEMENT IS TO BE CONSTRUCTED ARE SHOWN ON PLANS AND PROFILES GRADE POINTS FOR TOP OF CURBS, CENTER LINE OF STREETS, OR CENTER LINE OF ALLEYS ARE SHOWN BY CIRCLES OR SQUARES AT ALL POINTS BETWEEN DESIGNATED POINTS THE GRADE SHALL BE ESTABLISHED SO AS TO CONFORM TO A STRAIGHT LINE DRAWN BETWEEN SAID DESIGNATED POINTS.
5. THE PRIVATE ENGINEER SHALL FURNISH THE DEPT. OF PUBLIC WORKS WITH GRADE SHEETS AND STATIONING FOR ALL HOUSE LATERALS AND "Y" OR "T" BRANCHES AND SHALL PROVIDE STAKES FOR THEM AT THEIR PROPER LOCATIONS WITH STATIONING PLAINLY MARKED. ALL HOUSE LATERALS SHALL BE CONSTRUCTED IN A STRAIGHT ALIGNMENT AT RIGHT ANGLES FROM THE MAINLINE TO SEWER EXCEPT AS SHOWN ON THE PLANS. HOUSE LATERALS FROM CHIMNEYS SHALL NOT HAVE AN ANGLE OF LESS THAN 45° WITH THE MAIN LINE SEWER. ANY CHANGE IN ALIGNMENT SHALL BE REQUESTED IN WRITING BY THE PRIVATE ENGINEER.
6. THE PRIVATE ENGINEER SHALL FURNISH THE HOUSE LATERAL DEPTH AT THE PROPERTY LINE BELOW THE TOP OF CURB ELEVATION FOR EACH HOUSE LATERAL ON THE GRADE SHEET.
7. MAJOR WORK CAN BE STARTED THE CONTRACTOR MUST OBTAIN A PERMIT TO EXCAVATE IN COUNTY STREETS FROM THE ROAD ENGINEER OF THE LOS ANGELES DISTRICT OFFICE AND NO PERMIT TO THE DIRECTOR OF PUBLIC WORKS, 300 SOUTH VERMONT AVENUE, LOS ANGELES, CALIF. UNTIL THE COST OF CONSTRUCTION HAS BEEN SET AND RECORD PLANS.
8. IF WORK IS TO BE DONE ON A STATE HIGHWAY A PERMIT MUST BE OBTAINED FROM THE STATE OF CALIFORNIA, DIVISION OF HIGHWAYS, 180 SOUTH SPRING STREET, LOS ANGELES, CALIFORNIA.
9. APPROVAL OF THIS PLAN BY THE COUNTY OF LOS ANGELES DOES NOT CONSTITUTE A REPRESENTATION AS TO THE ACCURACY OF THE LOCATION OF OR THE EXISTENCE OR NON-EXISTENCE OF ANY UNDERGROUND UTILITY PIPE, OR STRUCTURE WITHIN THE LIMITS OF THIS PROJECT. THIS NOTE APPLIES TO ALL PAGES.
10. REFER TO SECTION 7.04 OF THE STANDARD SPECIFICATIONS REGARDING SAFETY ORDERS.
11. PRIOR TO THE ISSUANCE OF THE REQUIRED SEWER CONSTRUCTION PERMIT THE CONTRACTOR SHALL OBTAIN A PERMIT TO EXCAVATE IN COUNTY STREETS FROM THE ROAD ENGINEER OF THE LOS ANGELES DISTRICT OFFICE AND NO PERMIT TO THE DIRECTOR OF PUBLIC WORKS, 300 SOUTH VERMONT AVENUE, LOS ANGELES, CALIFORNIA UNTIL THE COST OF CONSTRUCTION HAS BEEN SET AND RECORD PLANS.

CONSTRUCTION NOTES:

1. WORK SHALL BE CONSTRUCTED ACCORDING TO THE STANDARD SPECIFICATIONS FOR PUBLIC WORKS CONSTRUCTION (PWS) EDITION WITH SUPPLEMENTS AND COUNTY ENGINEER SPECIAL PROVISIONS FOR THE CONSTRUCTION OF SANITARY SEWERS DATED 1-25-78 AND SHALL BE INSPECTED ONLY IN THE PRESENCE OF THE COUNTY ENGINEER.
2. THE CONTRACTOR SHALL NOTIFY THE CONSTRUCTION DIVISION BY TELEPHONE 226-0800 AT LEAST TWENTY-FOUR HOURS BEFORE STARTING ANY WORK UNDER THIS CONTRACT.
3. HOUSE LATERALS TO BE CONSTRUCTED WITH INVERTS AT PROPERTY LINE 6 FEET BELOW CURB GRADE EXCEPT AS NOTED.
4. WYE OR TEE BRANCHES MAY BE USED FOR CONNECTIONS TO MAINLINE SEWERS EXCEPT AS NOTED.
5. ALL STRUCTURES SHALL BE EXCEPT SEWER MANHOLES PER 8-3 ON RECORD CONCRETE SEWER.
6. MANHOLES PER 8-31 ON RECORD CONCRETE SEWER.
7. MANHOLE TOPS IN UNIMPROVED RIGHTS OF WAY TO BE SIX INCHES ABOVE FINISHED GRADE.
8. VITRIFIED CLAY PIPE JOINTS SHALL BE TYPE "D" OR "E" PER STANDARD SPECIFICATIONS SECTION 208-2.
9. IF A POWER POLE IS WITHIN THREE FEET OF THE SEWER THE SEWER SHALL BE ENCASED PER 8-23 CASE II TWO FEET ON EACH SIDE FROM THE JOINT OF INTERFERENCE.
10. IF DURING THE COURSE OF CONSTRUCTION IT IS DETERMINED THAT THERE IS LESS THAN FOUR FEET OF COVER OVER THE TOP OF A MAIN LINE OR HOUSE LATERAL SEWER WHICH IS NOT SHOWN ON THE PLANS THE PIPE SHALL BE ENCASED PER 8-23 CASE II UNLESS OTHERWISE APPROVED BY THE DIRECTOR OF PUBLIC WORKS.
11. ALL JOINTS BETWEEN CAST IRON PIPE AND VITRIFIED CLAY PIPE SHALL BE MADE WITH A RUBBER SLEEVE JOINT TYPE "D" OR "E" (WITH BUSHING IF NECESSARY) PER STANDARD SPECIFICATIONS SECTION 208-2.
12. SEWERS TO BE TESTED FOR LEAKAGE PER SECTION 208-1.4 OF THE STANDARD SPECIFICATIONS AND SPECIAL PROVISIONS.
13. CONTRACTOR SHALL BE RESPONSIBLE TO MEET L.A. COUNTY PUBLIC WORKS OR CALIFORNIA STATE HIGHWAY REQUIREMENTS IN ACCORDANCE WITH PERMITS.
14. FULL COMPLIANCE WITH SECTION 208-1.33 OF THE SPECIAL PROVISIONS WILL BE REQUIRED FOR BACKFILL IN STREETS. CERTIFICATION OF BACKFILL COMPACTION AND SAND EQUIVALENTS BY A QUALIFIED, INDENTURED TESTING LABORATORY SHALL BE PROVIDED BY THE PERMITTEE PRIOR TO THE ISSUANCE OF A CERTIFICATE OF PARTIAL ACCEPTANCE.
15. SPECIAL BACKFILL IN EASEMENT CONSTRUCTION (A) BACKFILL TRENCH AND REGRADE OTHER EARTH SO AS TO ACHIEVE THE NATURAL OR FINISHED GRADES AND SLOPES SHOWN ON THE GRADING PLAN APPROVED FOR THIS DEVELOPMENT BY THE BUILDING AND SAFETY DIVISION. (B) ALL BACKFILL AND EARTH REGRADE SHALL BE COMPACTED TO A MINIMUM DENSITY OF MAXIMUM DENSITY PER A.S.T.M. STD. METHOD D 1557-77 AT MODIFIED ACCEPTABLE CERTIFICATION OF SUCH COMPACTION SHALL BE SUBMITTED TO THE CONSTRUCTION DIVISION.

SANITARY SEWERS

TO BE CONSTRUCTED IN

TRACT NO 43115

PRIVATE CONTRACT NO. 10464

INDEX: A-75

W.S. G 2

3 SHEETS, 5 PAGES

SCALE: VERT. 1" = 4'
 HORIZ. 1" = 40'
 SEPTEMBER 1985

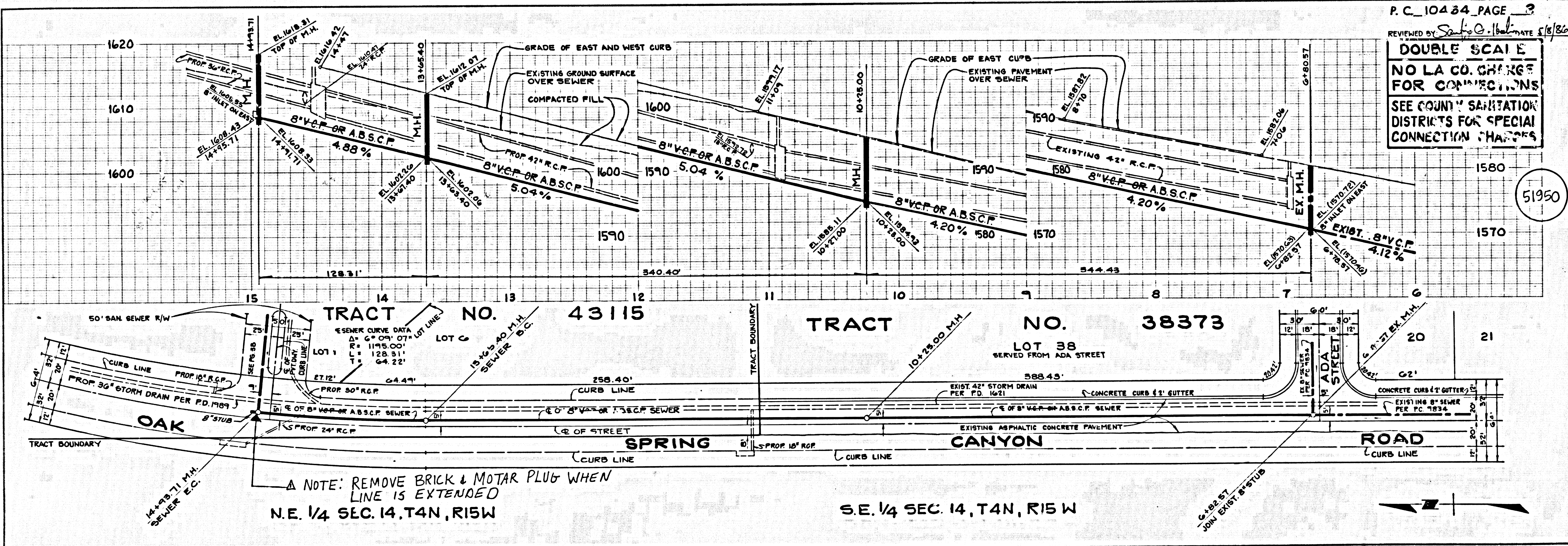
51949

ENGINEERING SERVICE CORPORATION
 601 WEST 10TH STREET, SUITE 100, LOS ANGELES, CALIF. 90015
 BY *J. Williams*
 REG. C.E. NO. 13035

THE FOLLOWING LATEST REVISED STANDARD PLANS ON FILE IN THE OFFICE OF THE DEPT. OF PUBLIC WORKS SHALL APPLY IN THE CONSTRUCTION OF THIS PROJECT.

LEGEND	
MINIMUM PUBLIC SAFETY REQUIREMENTS	8-3
8" VC-P SEWER MANHOLE	8-3
STANDARD MANHOLE STEP	8-3
BIDDING FOR SEWER PIPE	8-3
CRADING AND IMPACEMENT	8-3
WYE OR TEE BRANCHES	8-3
ALLOWABLE TRENCH WIDTHS	8-3
LOCKING MANHOLE FRAME AND COVER	8-3
NON-REINFORCED PRECAST CONCRETE 8" SEWER MANHOLE	8-36

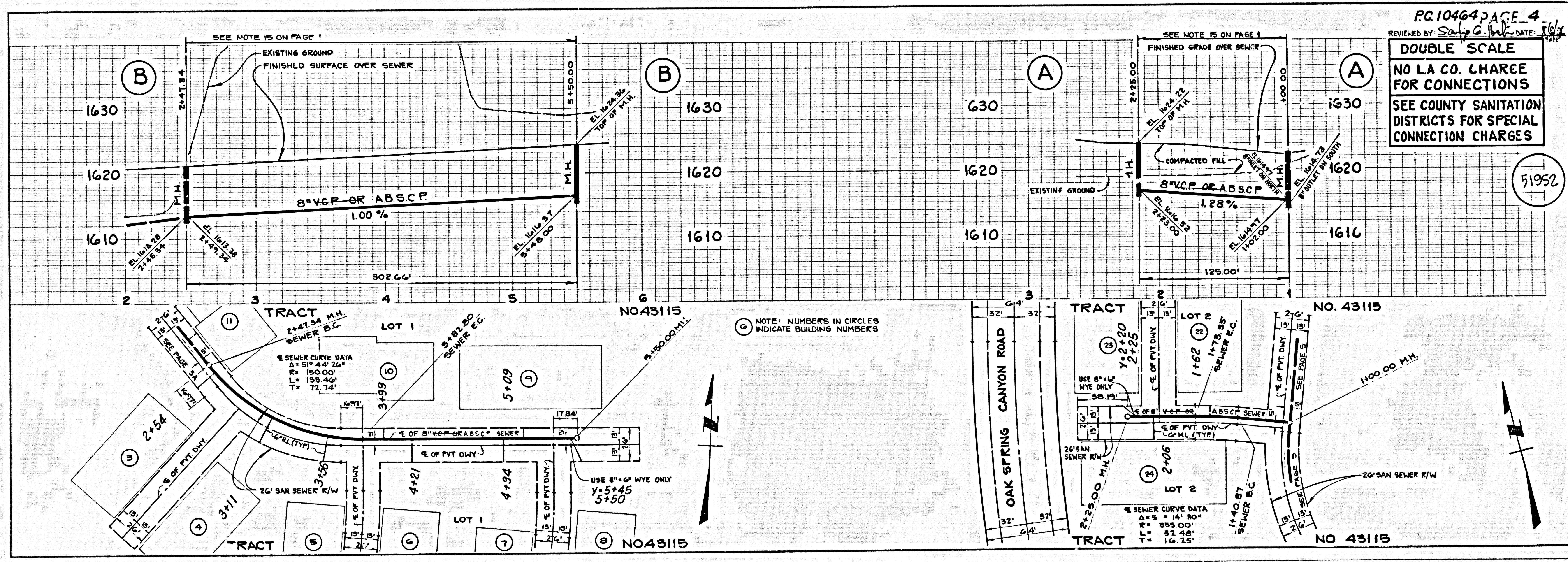
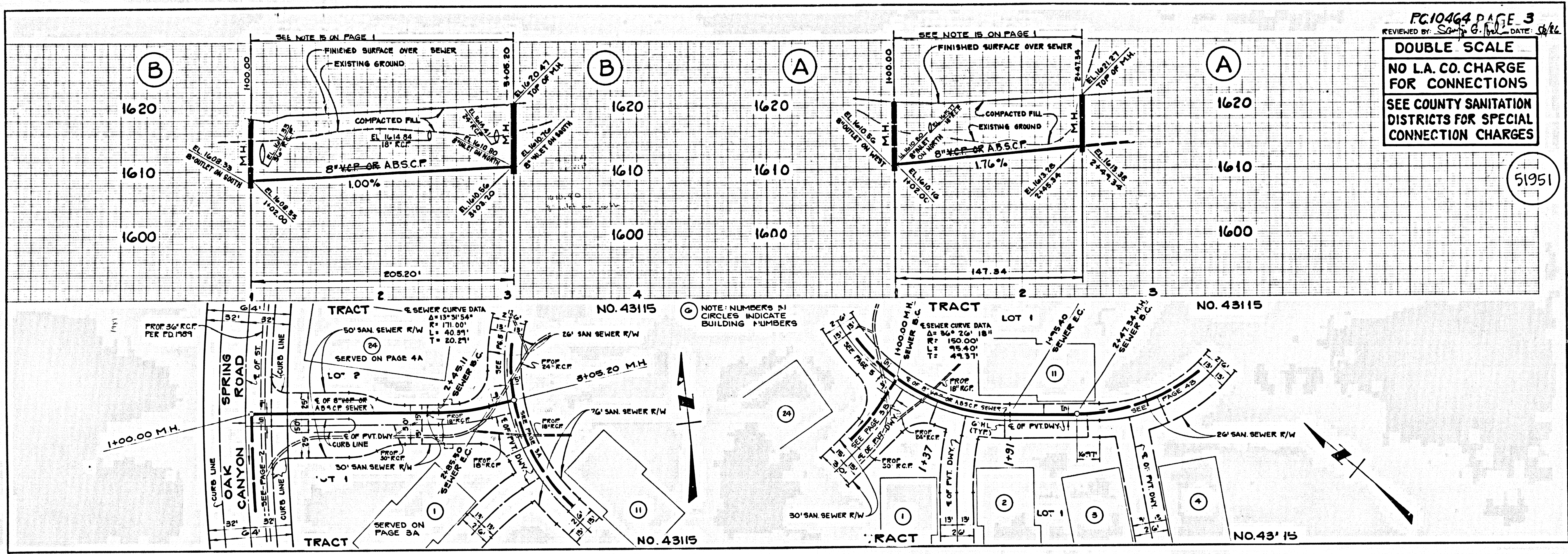
COUNTY OF LOS ANGELES, CALIFORNIA
 THOMAS A. TIDEMANSON, DIRECTOR OF PUBLIC WORKS
 APPROVED *Thomas Tidemanson* 5/14/86
 CHARLES W. CARRY, CHIEF ENGINEER
 APPROVED *Charles W. Carry* 5/14/86
 CHECKED *James Jinks* 5/15/86
 REG. CE NO. 16884
 SANTA CLARITA BLDG. DIST. # 2
 NEWHALL CO. WATER DISTRICT
 APPROVED *James Jinks* DATE
 JAMES JINKS GENERAL MANAGER



P.C. 10464 PAGE 3
 REVIEWED BY *James Jinks* DATE 5/15/86
DOUBLE SCALE
 NO L.A. CO. CHANGE FOR CONNECTIONS
 SEE COUNTY SANITATION DISTRICTS FOR SPECIAL CONNECTION CHANGES

NOTE: REMOVE BRICK & MORTAR PLUG WHEN LINE IS EXTENDED
 N.E. 1/4 SEC. 14, T4N, R15W

S.E. 1/4 SEC. 14, T4N, R15W



TRACT NO. 43115

