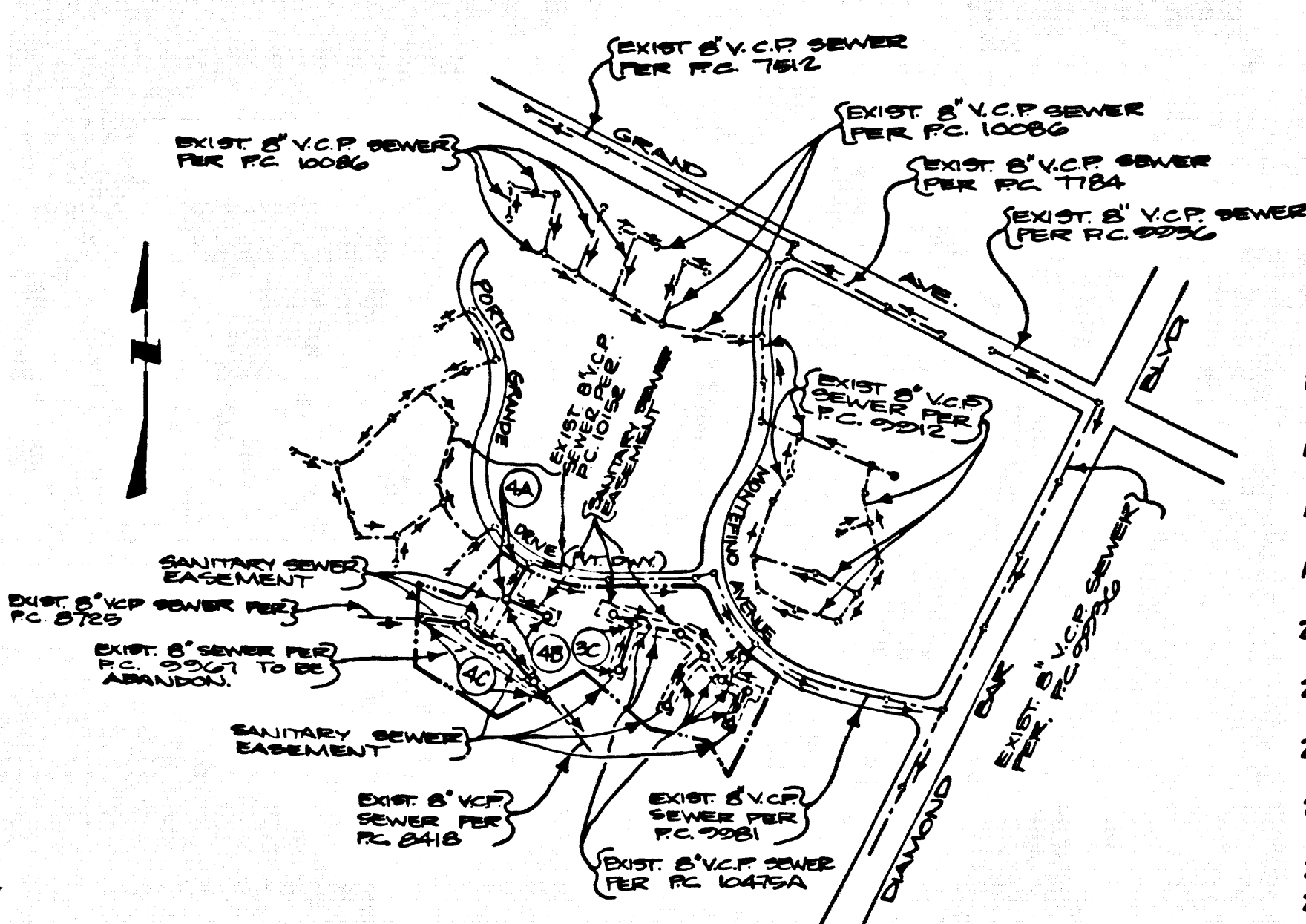


B.M. B.G. 3912 ELEV. 805.964  
 1.1' IN EAST END OF 40 FT.  
 N. & 50 FT. W. & INT. BRANCH  
 AVE. & DIAMOND BAY BLVD  
 MKD B.C.M.-11,  
 OTTERBEIN QUAD. 1975



INDEX MAP  
 P.C. 10475, TRACT NO. 36741  
 SCALE: 1" = 500'

NOTE: NUMBERS IN CIRCLES INDICATE PAGE NUMBERS.

**GENERAL NOTES CONT'D**

12. ALL REFERENCES ON THIS PLAN TO THE COUNTY ENGINEER, THE ROAD DEPARTMENT OR THE FLOOD CONTROL DISTRICT SHALL APPLY TO THOSE APPROPRIATE SECTIONS OF THE DEPARTMENT OF PUBLIC WORKS.

NO CONNECTION FOR THE DISPOSAL OF INDUSTRIAL WASTES SHALL BE MADE TO SEWERS SHOWN ON THESE DRAWINGS UNTIL A PERMIT FOR INDUSTRIAL WASTEWATER DISCHARGE HAS BEEN ISSUED BY THE SANITATION DISTRICTS FOR SAID CONNECTION.

BEFORE BREAKING INTO OR CONSTRUCTION ON A COUNTY SANITATION DISTRICT SEWER AND PRIOR TO FINAL ACCEPTANCE OF THE PROJECT, SANITATION DISTRICT INSPECTOR SHALL BE NOTIFIED BY PHONE 818 - 962-8605 SO THAT REQUIRED INSPECTION CAN BE MADE.

**CONSTRUCTION NOTES CONT'D**

16. FULL COMPLIANCE WITH PART IX OF THE SPECIAL PROVISIONS IS REQUIRED FOR THE INSTALLATION OF A.B.S. COMPOSITE PIPE.

17. MANHOLE WATER STOP GASKETS AND CLAMPS ARE REQUIRED FOR THE CONNECTION OF A.B.S. COMPOSITE PIPE TO MANHOLE STRUCTURE.

18. A.B.S. SOLID WALL PIPE MUST BE USED FOR WYE AND HOUSE LATERAL CONNECTIONS TO A.B.S. COMPOSITE MAINLINE SEWER PIPE.

19. A.B.S. COMPOSITE PIPE SHALL BE BEADED IN CONFORMANCE WITH THE TABLE IN SECTION B-3.1 OF PART IX OF THE SPECIAL PROVISIONS.

20. THREE DEGREE DEFLECTION COUPLERS ARE REQUIRED FOR RADII OF CURVATURE LESS THAN 380 FEET WHEN USING 8" A.B.S. COMPOSITE PIPE.

21. NO CONNECTIONS FOR DISPOSAL OF INDUSTRIAL WASTE IS ALLOWED IF A.B.S. COMPOSITE PIPE IS USED.

22. SEWER LINE CURVATURE SHALL NOT BE ACHIEVED BY PULLING OF JOINTS OR BEVELING PIPE ENDS WHEN USING PLASTIC PIPE INCLUDING A.B.S. COMPOSITE PIPE.

23. ALL WYES AND/OR HOUSE LATERALS ARE TO BE LOCATED AT LEAST FIVE FEET APART AND WHEN POSSIBLE NOT CLOSER THAN FIVE FEET TO ANY MANHOLE.

24. A.B.S. SOLID WALL PIPE IS NOT ACCEPTABLE FOR USE AS MAINLINE SEWER.

25. ONLY WYE BRANCHES ARE TO BE USED FOR CONNECTION TO A.B.S. COMPOSITE MAINLINE SEWER PIPE.

ISSUE NO CONNECTION PERMITS UNTIL  
 OUTLET P.C. 10475A IS ACCEPTED FOR  
 PUBLIC USE BY THE COUNTY OF LOS  
 ANGELES

**GENERAL NOTES:**

1. ELEVATIONS ARE IN FEET ABOVE U.S.C. & G.S. SEA LEVEL DATUM OF 1988.

2. NO REVISIONS SHALL BE MADE IN THESE PLANS WITHOUT THE APPROVAL OF THE DIRECTOR OF PUBLIC WORKS.

3. NO REPRESENTATIVE OF THE DEPARTMENT OF PUBLIC WORKS WILL SURVEY OR LAY OUT ANY PORTION OF THE WORK.

4. GRADES TO WHICH THIS IMPROVEMENT IS TO BE CONSTRUCTED ARE SHOWN ON PLANS AND PROFILES. GRADE POINTS FOR TOP OF CURBS, CENTER LINE OF STREETS OR CENTER LINE OF ALLEYS ARE SHOWN BY CIRCLES ON PROFILES. ALL POINTS BETWEEN DESIGNATED POINTS THE GRADE SHALL BE ESTABLISHED SO AS TO CONFORM TO A STRAIGHT LINE DRAWN BETWEEN SAID DESIGNATED POINTS.

5. THE PRIVATE ENGINEER SHALL FURNISH THE DEPARTMENT OF PUBLIC WORKS WITH GRADE SHEETS AND STATIONING FOR ALL HOUSE LATERALS AND 12" OR 16" BRANCHES AND SHALL PROVIDE STAKES FOR THEM AT THEIR PROPER LOCATIONS WITH STATIONING PLAINLY MARKED. ALL HOUSE LATERALS SHALL BE CONSTRUCTED IN A STRAIGHT ALIGNMENT AT RIGHT ANGLES FROM THE MAIN LINE SEWER EXCEPT AS SHOWN ON THE PLANS. HOUSE LATERALS FROM CHIMNEYS SHALL NOT HAVE AN ANGLE OF LESS THAN 45° WITH THE MAIN LINE SEWER. ANY CHANGE IN ALIGNMENT SHALL BE REQUESTED IN WRITING BY THE PRIVATE ENGINEER.

6. THE PRIVATE ENGINEER SHALL FURNISH THE HOUSE LATERAL DEPTH AT THE PROPERTY LINE BELOW THE TOP OF CURB ELEVATION FOR EACH HOUSE LATERAL ON THE GRADE SHEET.

7. BEFORE WORK CAN BE STARTED, THE CONTRACTOR MUST OBTAIN A PERMIT TO DIGGATE ON COUNTY STREETS FROM THE ROAD ELEMENT OF THE LOS ANGELES DEPARTMENT OF PUBLIC WORKS, DISTRICT OFFICE NO. 10, AND PAY A FEE TO THE DIRECTOR OF PUBLIC WORKS, 800 S. VERNON AVE., LOS ANGELES, CALIFORNIA 90004, TO COVER THE COST OF CONSTRUCTION INSPECTION AND RECORD PLANS.

8. IF WORK IS TO DOING IN A STATE HIGHWAY A PERMIT MUST BE OBTAINED FROM THE STATE OF CALIFORNIA, DIVISION OF HIGHWAYS, 120 SOUTH SPRING STREET, LOS ANGELES, CALIFORNIA.

9. APPROVAL OF THIS PLAN BY THE COUNTY OF LOS ANGELES DOES NOT CONSTITUTE A REPRESENTATION AS TO THE ACCURACY OF THE LOCATION OF OR THE EXISTENCE OR NON-EXISTENCE OF ANY UNDERGROUND UTILITY PIPE, OR STRUCTURE WITHIN THE LIMITS OF THIS PROJECT. THIS NOTE APPLIES TO ALL PAGES.

10. REFER TO SECTION 7.18.1 OF THE STANDARD SPECIFICATIONS REGARDING SAFETY ORINGS.

11. PRIOR TO THE ISSUANCE OF THE REQUIRED SEWER CONNECTION PERMIT, THE CONTRACTOR SHALL OBTAIN AND FILE WITH THE DEPARTMENT OF PUBLIC WORKS COPIES OF A PERMIT TO DIGGATE IN COUNTY STREETS FROM THE DEPARTMENT OF PUBLIC WORKS, A PERMIT FOR EXCAVATIONS AND TRENCHES FROM THE STATE OF CALIFORNIA, DIVISION OF INDUSTRIAL SAFETY AND A CERTIFICATE OF WORKERS COMPENSATION INSURANCE WITH THE DEPARTMENT OF PUBLIC WORKS, 800 S. VERNON AVE., LOS ANGELES, CALIFORNIA 90004, ROOM 2116, NAMED AS THE CERTIFICATE HOLDER TO BE NOTIFIED 30 DAYS PRIOR TO CANCELLATION OF POLICY.

**CONSTRUCTION NOTES:**

1. WORK SHALL BE CONSTRUCTED ACCORDING TO THE STANDARD SPECIFICATIONS FOR PUBLIC WORKS CONSTRUCTION 1988 EDITION AND COUNTY ENGINEER SPECIAL PROVISIONS FOR THE CONSTRUCTION OF SANITARY SEWERS DATED 10/1/87.

2. THE CONTRACTOR SHALL NOTIFY THE CONSTRUCTION DIVISION BY TELEPHONE 228-4281 AT LEAST TWO-FOUR HOURS BEFORE STARTING ANY WORK UNDER THIS CONTRACT.

3. HOUSE LATERALS TO BE CONSTRUCTED WITH INVERTS AT PROPERTY LINE 8 FEET BELOW CURB GRADE EXCEPT AS NOTED. AND WITH 1/4" PER FEET SLOPE TO THE SEWER MAINLINE, EXCEPT AS NOTED.

4. WYE OR BRANCHES MAY BE USED FOR CONNECTIONS TO MAINLINE SEWER EXCEPT AS NOTED.

5. ALL STRUCTURES SHALL BE EITHER BRICK OR PRECAST CONCRETE SEWER MANHOLES PER 200-8 EXCEPT AS NOTED.

6. PROVIDE STAKES ON THE PROPERTY LINE OR PROPERTY LINES PRODUCED AT RIGHT ANGLES TO THE SEWER LINE AT THE CENTER LINE OF EACH MANHOLE.

7. MANHOLE TOPS IN UNIMPROVED RIGHTS OF WAY TO BE SIX INCHES ABOVE FINISHED GRADE.

8. WYTHE CLAY PIPE JOINTS SHALL BE THE 12" OR 16" PER STANDARD SPECIFICATIONS SECTION 200-8.

9. IF WYTHE PIPE IS WITHIN THREE FEET OF THE SEWER, THE SEWER SHALL BE ENCASED PER 200-8 CASE II. TWO FEET ON EACH SIDE FROM THE POINT OF INTERFERENCE.

10. IF DURING THE COURSE OF CONSTRUCTION IT IS DETERMINED THAT THERE IS LESS THAN FOUR FEET OF COVER OVER THE TOP OF A MAINLINE OF HOUSE LATERAL, WYE OR BRANCH WHICH IS NOT INDICATED ON THE PLANS, THE PIPE SHALL BE ENCASED PER 200-8 CASE II UNLESS OTHERWISE APPROVED BY THE DIRECTOR OF PUBLIC WORKS.

11. ALL JOINTS BETWEEN CAST IRON PIPE AND WYTHE CLAY PIPE SHALL BE MADE WITH A RUBBER SLEEVE JOINT, TYPE "C" OR "D", WITH BUSHING IF NECESSARY. REFER TO STANDARD SPECIFICATIONS SECTION 200-8.

12. SEWERS TO BE TESTED FOR LEAKAGE PER SECTION 200-1.4 OF THE STANDARD SPECIFICATIONS AND SPECIAL PROVISIONS.

13. REPAIRS ALL TRENCHES WITHIN WAVED AREAS TO MEET LOS ANGELES COUNTY PUBLIC WORKS OR CALIFORNIA STATE HIGHWAY REQUIREMENTS IN ACCORDANCE WITH PERMITS.

14. FULL COMPLIANCE WITH SECTION 200-1.8 OF THE SPECIAL PROVISIONS WILL BE REQUIRED FOR BACKFILL IN STREETS. CERTIFICATION OF BACKFILL COMPACTION AND SAND EQUIVALENTS BY A QUALIFIED, REGISTERED TESTING LABORATORY SHALL BE PROVIDED BY THE PERMITTEE PRIOR TO THE ISSUANCE OF A CERTIFICATE OF PARTIAL ACCEPTANCE.

15. SPECIAL BACKFILL IN EXISTING CONSTRUCTION IN BACKFILL TRENCH AND RE-USE OTHER EXISTING TO ACHIEVE THE NATURAL OR FINISHED GRADES AND SLOPES SHOWN ON THE GRADING PLAN APPROVED FOR THIS DEVELOPMENT BY THE BUILDING AND SAFETY DIVISION. IF ALL BACKFILL AND EARTH REFACE SHALL BE COMPACTED TO A MINIMUM OF 90% OF MAXIMUM DENSITY PER A.S.T.M. STD. METHOD OF TEST D998 AT 4 INCHES ACCEPTABLE CERTIFICATION OF EACH CONNECTION SHALL BE SUBMITTED TO THE CONSTRUCTION DIVISION.

PROFILE, ALIGNMENT AND GRADE OF  
**SANITARY SEWERS**  
 TO BE CONSTRUCTED IN  
 TRACT NO. 36741  
 PRIVATE CONTRACT NO. 10475  
 4-149-222 W.S. 39-2,3  
 2 SHEETS, 3 PAGES  
 52448

SCALE: VERT. 1" = 4'  
 HORIZ. 1" = 40'  
 MARCH, 1986

PREPARED IN THE OFFICES OF  
 MADOLE & ASSOCIATES, INC.  
 1820 E. 104th STREET (114) 835-2648  
 SANTA ANA, CA 92701  
 BY: *[Signature]*  
 REG. C.E. NO. 14814

THE FOLLOWING LATEST REVISED STANDARD PLANS ON FILE IN THE OFFICE OF THE DEPARTMENT OF PUBLIC WORKS SHALL APPLY IN THE CONSTRUCTION OF THIS PROJECT:

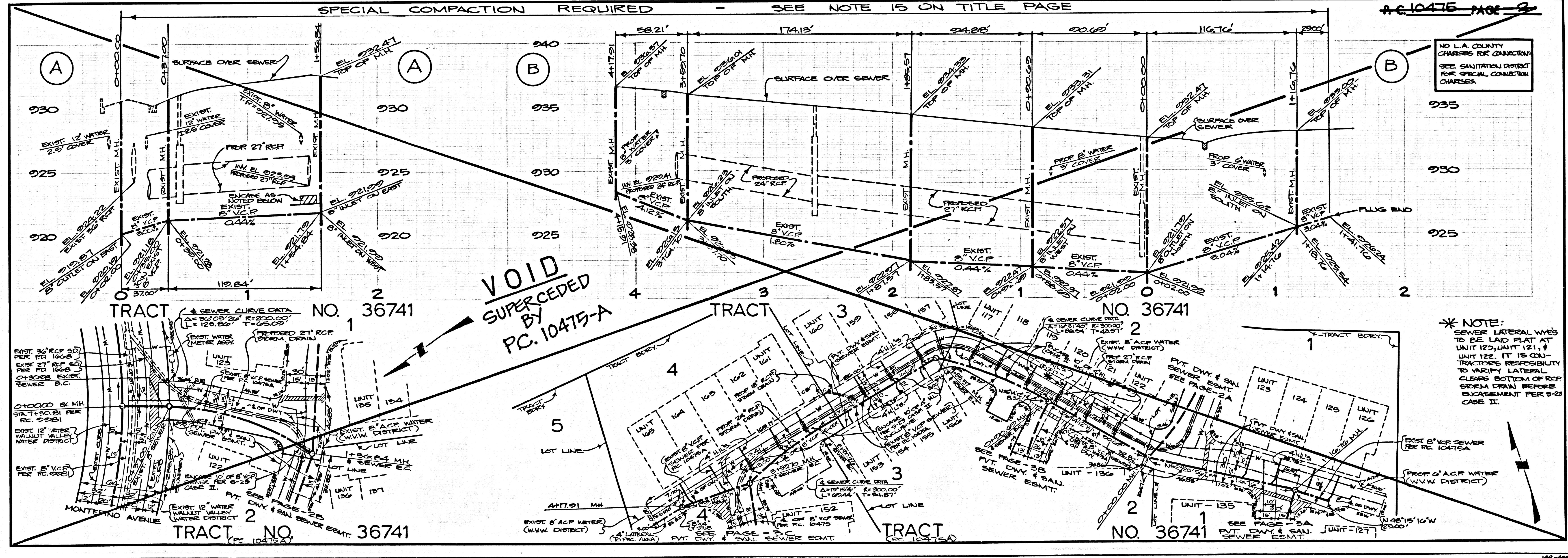
LEGEND	COUNTY
MINIMUM PUBLIC SAFETY REQUIREMENTS	20
BRICK MANHOLE	20
STANDING MANHOLE STEP	21
BEADING FOR SEWER PIPE	21
GRADING AND ENCASUREMENT	23
WYE ON THE SUPPORT	24
ALLOWABLE TRENCH WIDTHS	25
LOCKING MANHOLE FRAME AND COVER	26
NON-REINFORCED PRECAST CONCRETE SEWER MANHOLE	26
BEADING FOR A.B.S. & P.V.C. SEWER PIPE	27
EROSION PROTECTION	27
ANGULAR BLOCK	28

COUNTY OF LOS ANGELES, CALIFORNIA  
 THOMAS A. TIDEMANSON  
 DIRECTOR OF PUBLIC WORKS

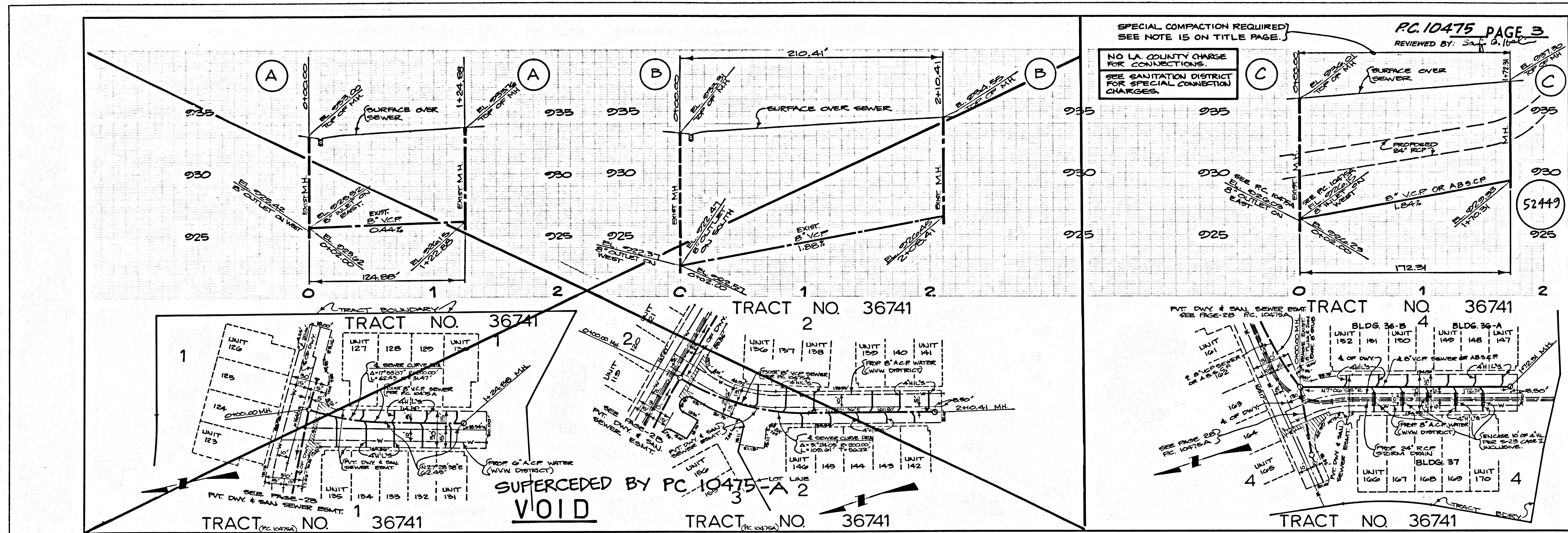
APPROVED: *[Signature]* 7/27/86 (10475)  
 CHECKED: *[Signature]* 6/13/86 (10475)  
 REG. C.E. NO. 16841

CHARLES W. CARRY  
 CHIEF ENGINEER  
 CO. SAN. DIST. NO. 21  
 APPROVED: *[Signature]* 7/14/86  
 OFFICE ENGINEER

SAN DIMAS BLDG. DIST. 12.00



1  
 B7A0129  
 14785 ON TRACT



(S)

RT401 29

1479E ON TCAST

