

**SANITARY SEWERS**

TO BE CONSTRUCTED IN

TRACT NO. 44330

PRIVATE CONTRACT NO. 10476

A-290 W.S. 71  
6 SHEETS, 12 PAGES

51588

SCALE: VERT. 1" = 4'  
HORIZ. 1" = 40'

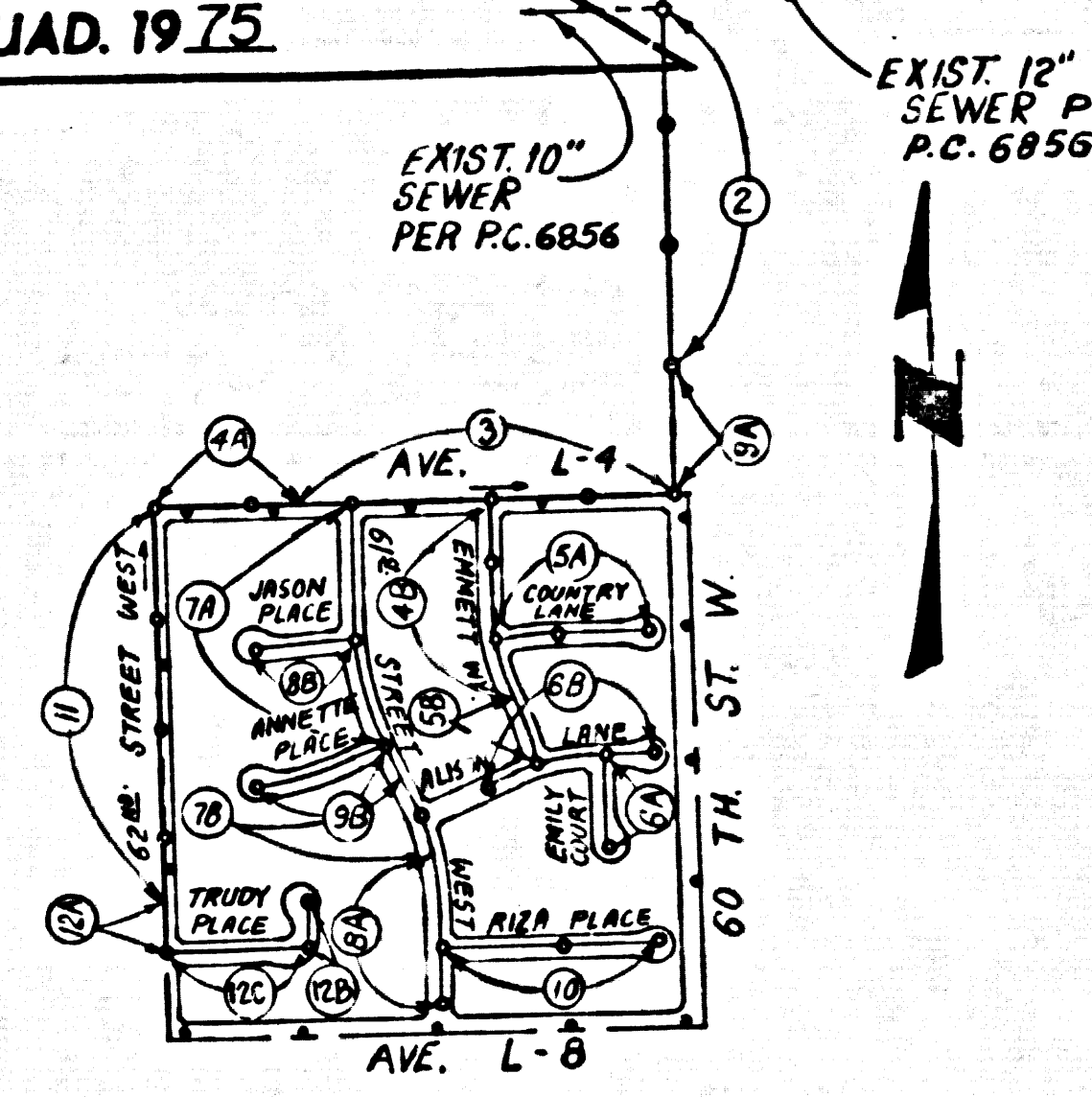
DEC. 1985  
PREPARED IN THE OFFICES OF  
SISKAND ENGINEERING ASSOCIATES  
15230 BURBANK BLVD.  
VAN NUYS, CA. 91411 PHONE (818) 787-8550  
BY: *James Brunson* (KEENAN GIRISGEN)  
REG. C.E. No. 21743

THE FOLLOWING LATEST REVISED STANDARD PLANS ON FILE IN THE OFFICE OF THE DEPARTMENT OF PUBLIC WORKS SHALL APPLY IN THE CONSTRUCTION OF THIS PROJECT:

|   |      |
|---|------|
| LEGEND                                  | 0-1  |
| MINIMUM PUBLIC SAFETY REQUIREMENTS      | 0-2  |
| BRICK MANHOLE                           | 0-3  |
| STANDARD MANHOLE STEP                   | 0-17 |
| BEDDING FOR SEWER PIPE                  | 0-21 |
| CRACKING AND ENCASUREMENT               | 0-22 |
| WYE OR TEE SUPPORT                      | 0-23 |
| ALLOWABLE TRENCH WIDTHS                 | 0-26 |
| LOCKING MANHOLE FRAME AND COVER         | 0-28 |
| NON-REINFORCED PRECAST CONCRETE MANHOLE | 0-30 |

COUNTY OF LOS ANGELES, CALIFORNIA  
THOMAS A. TIDEMANSON  
DIRECTOR OF PUBLIC WORKS  
APPROVED: *Carl J. DeLeon* 5/23/86 (DATE)  
APPROVED: *John J. DeLeon* 5/24/86 (DATE)  
CHECKED: *James Brunson* 5/24/86 (DATE)  
REG. C.E. NO. 16641  
ANTELOPE VALLEY BLDG. DIST. 8

B.M. CL 397 ELEV. 2513.813  
CS MON IN WELL 22 IN DN & CIL  
INT OF AVE M & 60TH ST W MKD  
(SEC COR 34 35 32 17N 16N R13W)  
LANCASTER QUAD. 19 75



INDEX MAP  
SCALE: 1" = 600'

TRACT NO. 44330  
P.C. 10476

NOTE:  
NUMBERS IN CIRCLES INDICATE  
PAGE NUMBERS.

**CONSTRUCTION NOTES:**

- 16- FULL COMPLIANCE WITH PART IV OF THE SPECIAL PROVISIONS IS REQUIRED FOR THE INSTALLATION OF A.B.S. COMPOSITE PIPE.
- 17- MANHOLE WATER STOP GASKETS AND CLAMPS ARE REQUIRED FOR THE CONNECTION OF A.B.S. COMPOSITE PIPE TO MANHOLE STRUCTURES.
- 18- A.B.S. SOLID WALL PIPE MUST BE USED FOR WYE AND HOUSE LATERAL CONNECTIONS TO A.B.S. COMPOSITE MAINLINE SEWER PIPE.
- 19- A.B.S. COMPOSITE PIPE SHALL BE BEDDED IN CONFORMANCE WITH THE TABLE IN SECTION B-3.1 PART IV OF THE SPECIAL PROVISIONS.
- 20- 3 DEGREE DEFLECTION COUPLERS MUST BE USED TO ACCOMPLISH RADIUS OF CURVATURE LESS THAN 380'.

NO CONNECTION FOR THE DISPOSAL OF INDUSTRIAL WASTES SHALL BE MADE TO SEWERS SHOWN ON THESE DRAWINGS UNTIL A PERMIT FOR INDUSTRIAL WASTEWATER DISCHARGE HAS BEEN ISSUED BY THE SANITATION DISTRICTS FOR SAID CONNECTION.

BEFORE BREAKING INTO OR CONSTRUCTION ON A COUNTY SANITATION DISTRICT SEWER AND PRIOR TO FINAL ACCEPTANCE OF THE PROJECT, SANITATION DISTRICT INSPECTOR SHALL BE NOTIFIED BY PHONE 818-962-8605 SO THAT REQUIRED INSPECTION CAN BE MADE.

REVISION NO. 1 DATE 7-7-86  
PAGE 9: DELETE ENCASUREMENT OF HOUSE LATERALS FOR LOTS 43 THROUGH 45, INCLUSIVE  
PAGE 7B: DELETE ENCASUREMENT OF HOUSE LATERALS FOR LOTS 83, 84 AND 85  
PAGE 8A: DELETE ENCASUREMENT OF HOUSE LATERALS FOR LOTS 84, 90 AND 91  
PAGE 10: DELETE ENCASUREMENT OF HOUSE LATERALS FOR LOT 4 THROUGH 9, INCLUSIVE  
PAGE 12C: DELETE ENCASUREMENT OF HOUSE LATERALS FOR LOTS 94 THROUGH 104, INCLUSIVE  
APPROVED: *Sandy G. Holt*  
DEPARTMENT OF PUBLIC WORKS

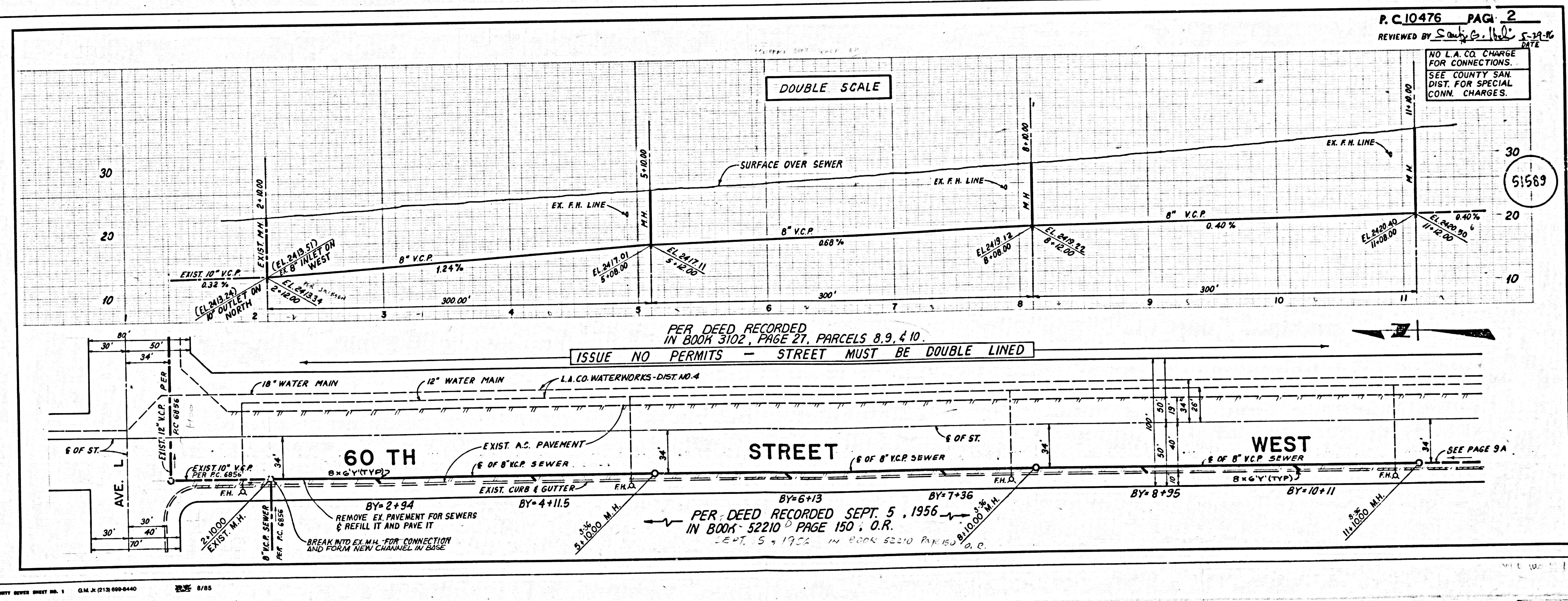
REVISION NO. 2 DATE 9-24-86  
PAGE 3: SHIFT 3 CHIMNEYS TO STA. 5+23, 5+44 AND 2+41  
PAGE 6A: REVISED LATERAL TO LOT 17  
PAGE 6B: REVISED LATERAL TO LOT 25  
PAGE 8A: REVISED LATERAL TO LOT 91; DELETED STUD UPSTREAM OF M.H. @ STA. 15+75  
PAGE 12B: REVISED LATERALS TO LOTS 93, 94 AND 96  
PAGE 12C: REVISED LATERAL TO LOT 99  
PAGE 11: ADDED LATERAL TO LOT 117  
APPROVED: *Sandy G. Holt* 9-26-86, *David C. Hays* 9/26/86  
DEPARTMENT OF PUBLIC WORKS

**GENERAL NOTES:**

1. ELEVATIONS ARE IN FEET ABOVE 1985 B.S.S. SEA LEVEL DATUM OF 1985.
2. NO REVISIONS SHALL BE MADE IN THESE PLANS WITHOUT THE APPROVAL OF THE DIVISION OF PUBLIC WORKS.
3. NO REPRESENTATIVE OF THE DEPARTMENT OF PUBLIC WORKS WILL SURVEY OR LAY OUT ANY PORTION OF THE WORK.
4. GRADES TO WHICH THIS IMPROVEMENT IS TO BE CONSTRUCTED ARE SHOWN ON PLANS AND PROFILES AT ALL POINTS BETWEEN DESIGNATED POINTS. CENTER LINE OF STREETS OR CENTER LINE OF ALLEYS ARE SHOWN BY CIRCLES OR PROFILES AT ALL POINTS BETWEEN DESIGNATED POINTS. GRADE SHALL BE ESTABLISHED SO AS TO CONFORM TO A STRAIGHT LINE OR CURVE BETWEEN SAID DESIGNATED POINTS.
5. THE PRIVATE ENGINEER SHALL FURNISH THE DEPARTMENT OF PUBLIC WORKS WITH GRADE SHEETS AND STATIONING FOR ALL HOUSE LATERALS AND 12" OR 18" BRANCHES AND SHALL PROVIDE STAKES FOR THEM AT THEIR PROPER LOCATIONS WITH STATIONING PLAINLY MARKED. ALL HOUSE LATERALS SHALL BE CONSTRUCTED IN A STRAIGHT ALIGNMENT AT RIGHT ANGLES FROM THE MAIN LINE SEWER EXCEPT AS SHOWN ON THE PLANS. HOUSE LATERALS FROM CHIMNEYS SHALL NOT HAVE AN ANGLE OF LESS THAN 45° WITH THE MAIN LINE SEWER. ANY CHANGE IN ALIGNMENT SHALL BE REQUESTED IN WRITING BY THE PRIVATE ENGINEER.
6. THE PRIVATE ENGINEER SHALL FURNISH THE HOUSE LATERAL DEPTH AT THE PROPERTY LINE BELOW THE TOP OF CURB ELEVATION FOR EACH HOUSE LATERAL ON THE GRADE SHEET.
7. BEFORE WORK CAN BE STARTED, THE CONTRACTOR MUST OBTAIN A PERMIT TO EXCAVATE IN COUNTY STREETS FROM THE ROAD ELEMENT OF THE LOS ANGELES DEPARTMENT OF PUBLIC WORKS, DISTRICT OFFICE NO. 5, AND PAY A FEE TO THE DIRECTOR OF PUBLIC WORKS, 800 S. VERMONT AVE., LOS ANGELES, CALIFORNIA 90005, TO COVER THE COST OF CONSTRUCTION INSPECTION AND RECORD PLANS.
8. IF WORK IS TO DONE IN A STATE HIGHWAY A PERMIT MUST BE OBTAINED FROM THE STATE OF CALIFORNIA, DIVISION OF HIGHWAYS, 120 SOUTH SPRING STREET, LOS ANGELES, CALIFORNIA.
9. APPROVAL OF THIS PLAN BY THE COUNTY OF LOS ANGELES DOES NOT CONSTITUTE A REPRESENTATION AS TO THE ACCURACY OF THE LOCATION OF OR THE EXISTENCE OR NON-EXISTENCE OF ANY UNDERGROUND UTILITY PIPE, OR STRUCTURE WITHIN THE LIMITS OF THIS PROJECT. THIS NOTE APPLIES TO ALL PAGES.
10. REFER TO SECTION 716.1 OF THE STANDARD SPECIFICATIONS REGARDING SAFETY ORDERS.
11. PRIOR TO THE ISSUANCE OF THE REQUIRED SEWER CONSTRUCTION PERMIT, THE CONTRACTOR SHALL OBTAIN AND FILE WITH THE DEPARTMENT OF PUBLIC WORKS COPIES OF A PERMIT TO EXCAVATE IN COUNTY STREETS FROM THE ROAD ELEMENT AT THE DEPARTMENT OF PUBLIC WORKS, A PERMIT FOR EXCAVATIONS AND TRENCHES FROM THE STATE OF CALIFORNIA, A DIVISION OF INDUSTRIAL SAFETY AND A CERTIFICATE OF WORKERS COMPENSATION INSURANCE WITH THE DEPARTMENT OF PUBLIC WORKS, 800 S. VERMONT AVE., LOS ANGELES, CALIFORNIA 90005, ROOM 818, NAMED AS THE CERTIFICATE HOLDER TO BE NOTIFIED 90 DAYS PRIOR TO CANCELLATION OF POLICY.

**CONSTRUCTION NOTES:**

1. WORK SHALL BE CONSTRUCTED ACCORDING TO THE STANDARD SPECIFICATIONS FOR PUBLIC WORKS CONSTRUCTION (1985 EDITION) WITH THE FOLLOWING AMENDMENTS AND COUNTY ENGINEER SPECIFICATIONS FOR THE CONSTRUCTION OF SANITARY SEWERS DATED SEPT. 21, 1976 AND SHALL BE PROSECUTED ONLY IN THE PRESENCE OF THE COUNTY ENGINEER.
2. THE CONTRACTOR SHALL NOTIFY THE CONSTRUCTION DIVISION BY TELEPHONE, 228-2821, AT LEAST TWENTY-FOUR HOURS BEFORE STARTING ANY WORK UNDER THIS CONTRACT.
3. HOUSE LATERALS TO BE CONSTRUCTED WITH INVERTS AT PROPERTY LINE 8 FEET BELOW CURB GRADE EXCEPT AS NOTED.
4. WYE OR TEE BRANCHES MAY BE USED FOR CONNECTIONS TO MAINLINE SEWERS EXCEPT AS NOTED.
5. ALL STRUCTURES SHALL BE EITHER BRICK MANHOLES PER B-3 OR PRECAST CONCRETE MANHOLES PER B-26, EXCEPT AS NOTED.
6. PROVIDE STAKES ON THE PROPERTY LINE OR PROPERTY LINES PRODUCED AT RIGHT ANGLES TO THE SEWER LINE AT THE CENTER LINE OF EACH MANHOLE.
7. MANHOLE TOPS IN UNIMPROVED RIGHTS OF WAY TO BE SIX INCHES ABOVE FINISHED GRADE.
8. WITHEFIED CLAY PIPE JOINTS SHALL BE TYPE "D" OR "E" PER STANDARD SPECIFICATIONS SECTION 200-2.
9. IF A POWER POLE IS WITHIN THREE FEET OF THE SEWER THE SEWER SHALL BE ENCASED PER B-25. CASE 1: TWO FEET ON EACH SIDE FROM THE POINT OF INTERFERENCE.
10. IF DURING THE COURSE OF CONSTRUCTION IT IS DETERMINED THAT THERE IS LESS THAN FOUR FEET OF COVER OVER THE TOP OF A MAIN LINE OR HOUSE LATERAL V.C.P. SEWER WHICH IS NOT INDICATED ON THE PLANS, THE PIPE SHALL BE ENCASED PER B-25, CASE II UNLESS OTHERWISE APPROVED BY THE DIRECTOR OF PUBLIC WORKS.
11. ALL JOINTS BETWEEN CLAY PIPE AND WITHEFIED CLAY PIPE SHALL BE MADE WITH A RUBBER SLEEVE JOINT, TYPE "C" OR "D", WITH BUSHING IF NECESSARY PER STANDARD SPECIFICATIONS, SECTION 200-2.
12. SEWERS TO BE TESTED FOR LEAKAGE PER SECTION 200-1.4 OF THE STANDARD SPECIFICATIONS AND SPECIAL PROVISIONS.
13. RESURFACE ALL TRENCHES WITHIN PAVED AREAS TO MEET LOS ANGELES COUNTY PUBLIC WORKS OR CALIFORNIA STATE HIGHWAY REQUIREMENTS IN ACCORDANCE WITH PERMITS.
14. FULL COMPLIANCE WITH SECTION 200-1.3.2 OF THE SPECIAL PROVISIONS WILL BE REQUIRED FOR BACKFILL IN STREETS. CERTIFICATION OF BACKFILL COMPOSITION AND SAND EQUIVALENTS BY A QUALIFIED, REGISTERED TESTING LABORATORY SHALL BE PROVIDED BY THE PERMITTEE PRIOR TO THE ISSUANCE OF A CERTIFICATE OF PARTIAL ACCEPTANCE.
15. SPECIAL BACKFILL IN EASEMENT CONSTRUCTION OR BACKFILL TRENCH AND REPLACE OTHER EARTH SO AS TO ACHIEVE THE NATURAL OR FINISHED GRADES AND SLOPES SHOWN ON THE GENERAL PLAN APPROVED FOR THIS DEVELOPMENT BY THE BUILDING AND SAFETY DIVISION (IN ALL BACKFILL AND EARTH REPLACED SHALL BE COMPACTED TO A MINIMUM OF 90% OF MAXIMUM DENSITY PER A.S.T.M. STD. METHOD OF TEST D698-57) AS MODIFIED. ACCEPTABLE CERTIFICATION OF SUCH COMPACTION SHALL BE SUBMITTED TO THE CONSTRUCTION DIVISION.



P.C. 10476 PAGE 2  
REVIEWED BY *Sandy G. Holt* 5-24-86

NO L.A. CO. CHARGE FOR CONNECTIONS. SEE COUNTY SAN. DIST. FOR SPECIAL CONN. CHARGES.

51569

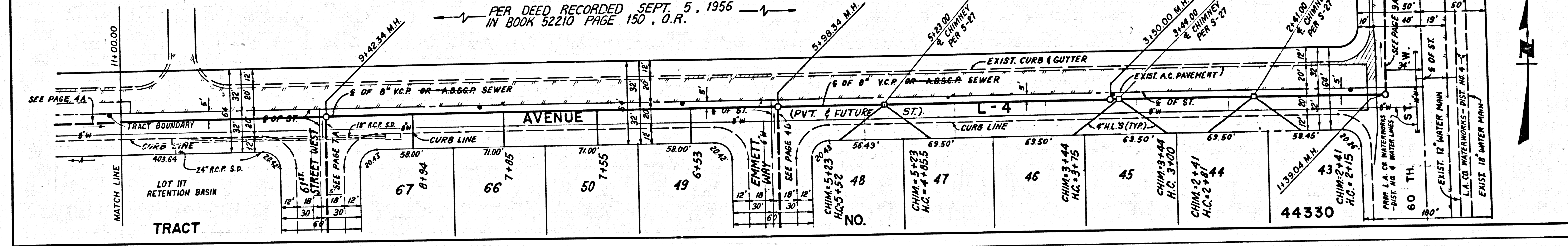
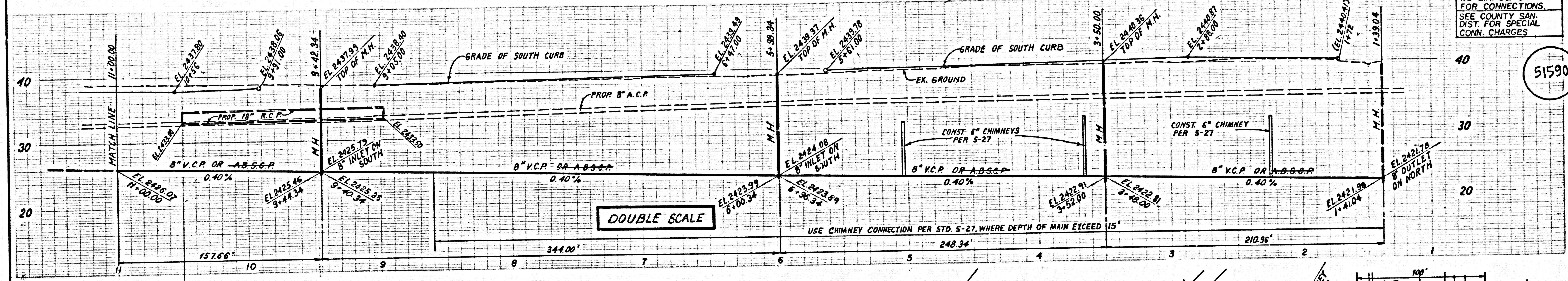
PER DEED RECORDED IN BOOK 3102, PAGE 27, PARCELS 8, 9, & 10.  
ISSUE NO PERMITS - STREET MUST BE DOUBLE LINED

PER DEED RECORDED SEPT. 5, 1956 IN BOOK 52210 PAGE 150; O.R.  
SEPT. 5, 1956 IN BOOK 52210 PARCEL 10, O.R.



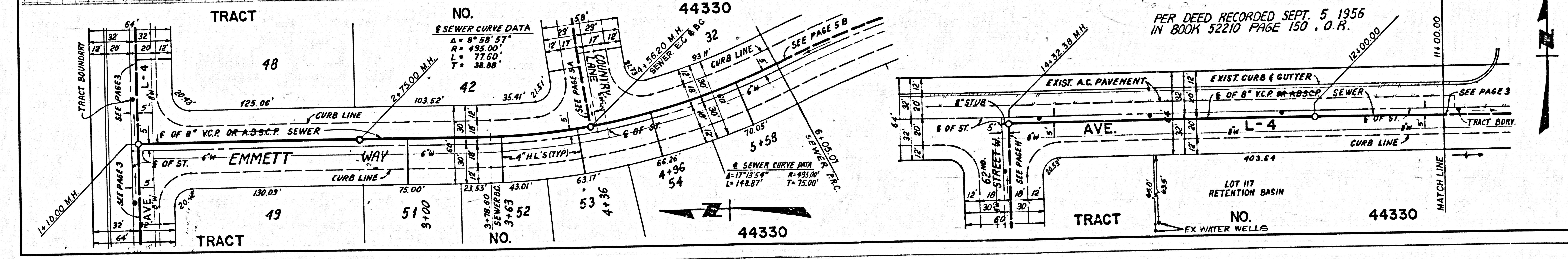
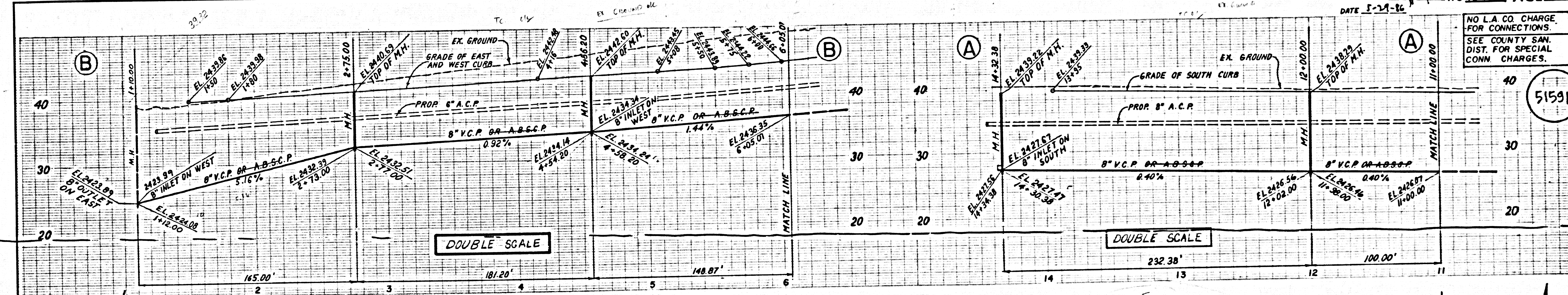
NO L.A. CO. CHARGE FOR CONNECTIONS. SEE COUNTY SAN. DIST. FOR SPECIAL CONN. CHARGES.

51590



NO L.A. CO. CHARGE FOR CONNECTIONS. SEE COUNTY SAN. DIST. FOR SPECIAL CONN. CHARGES.

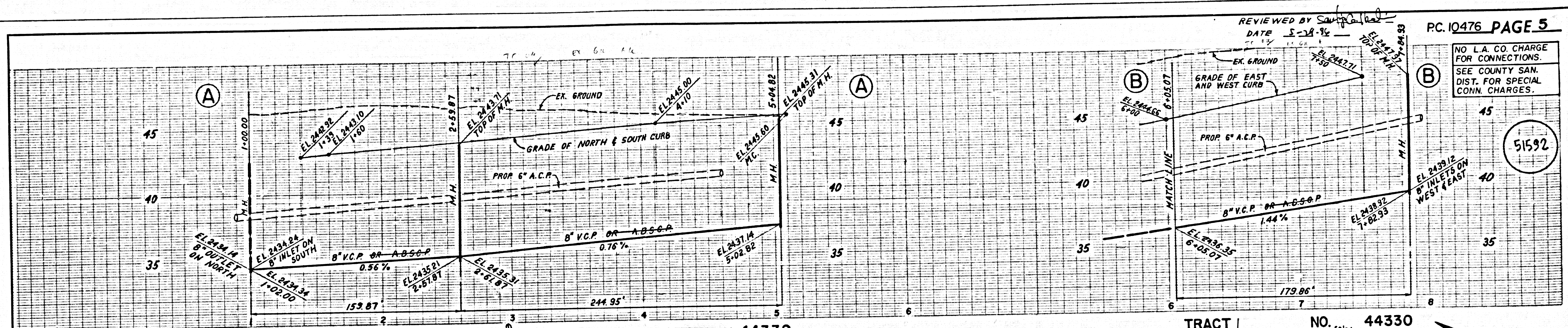
51591



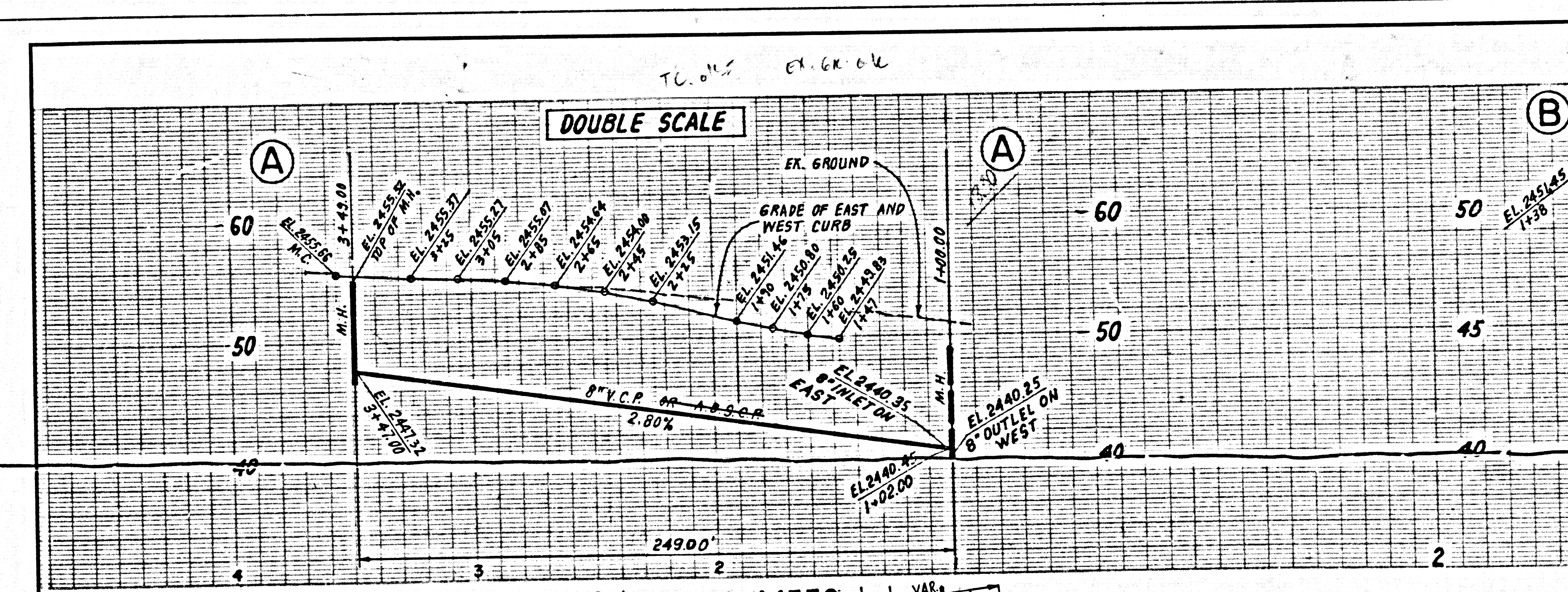
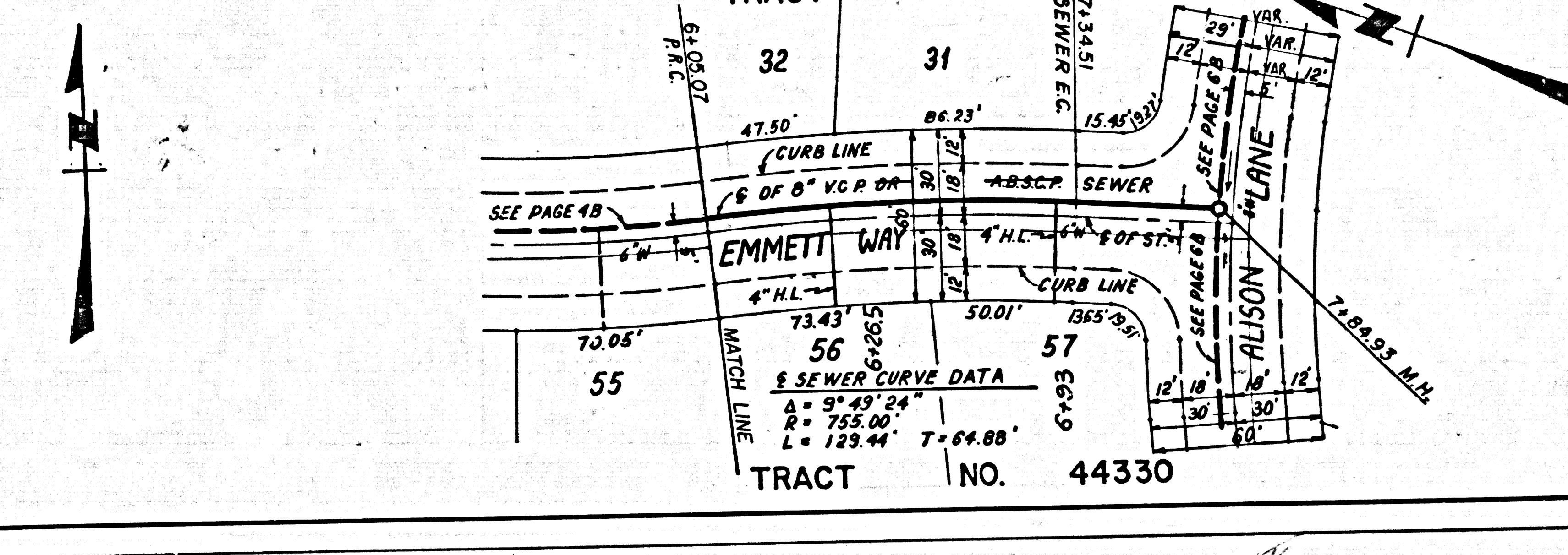
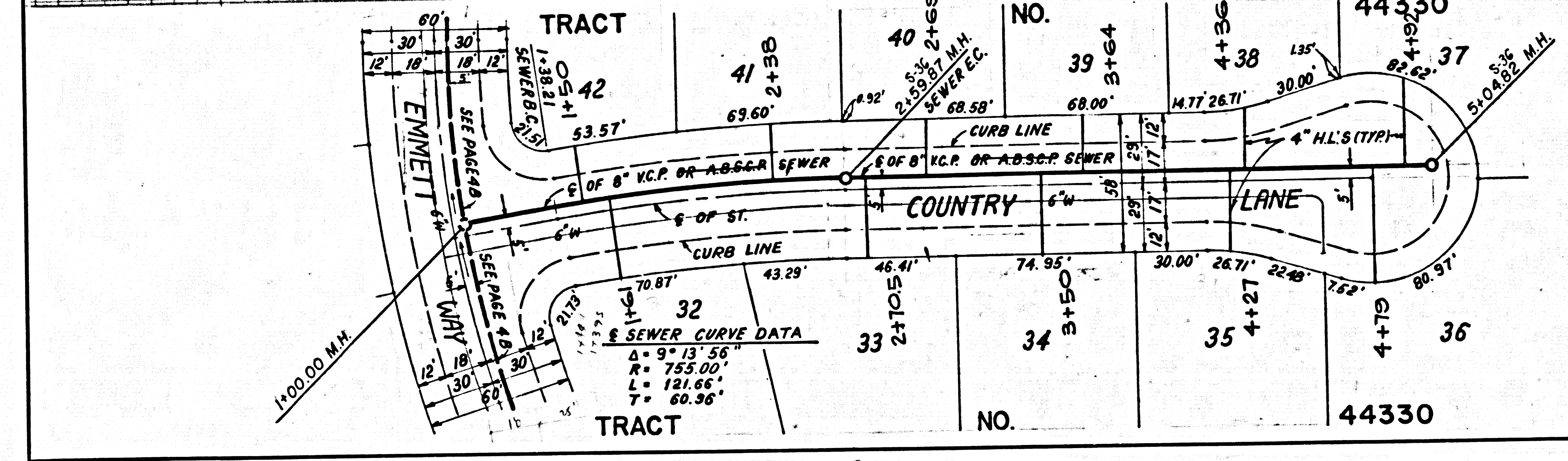
51590 0534 ON TRACT

51591

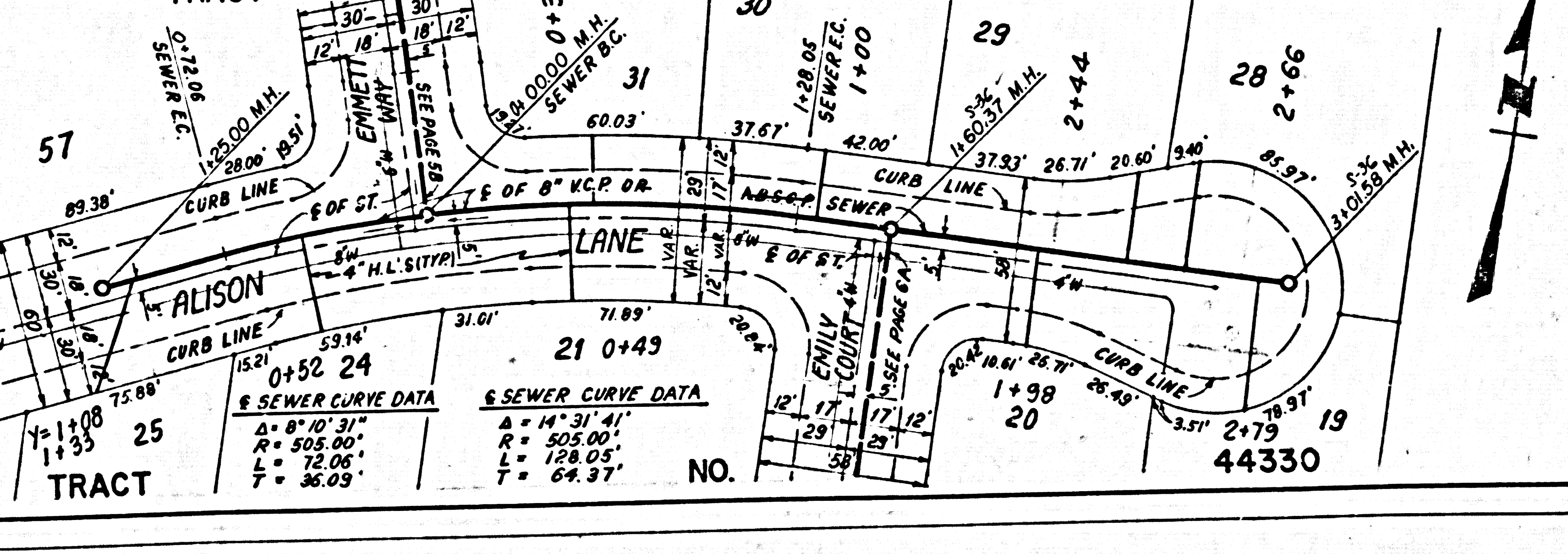
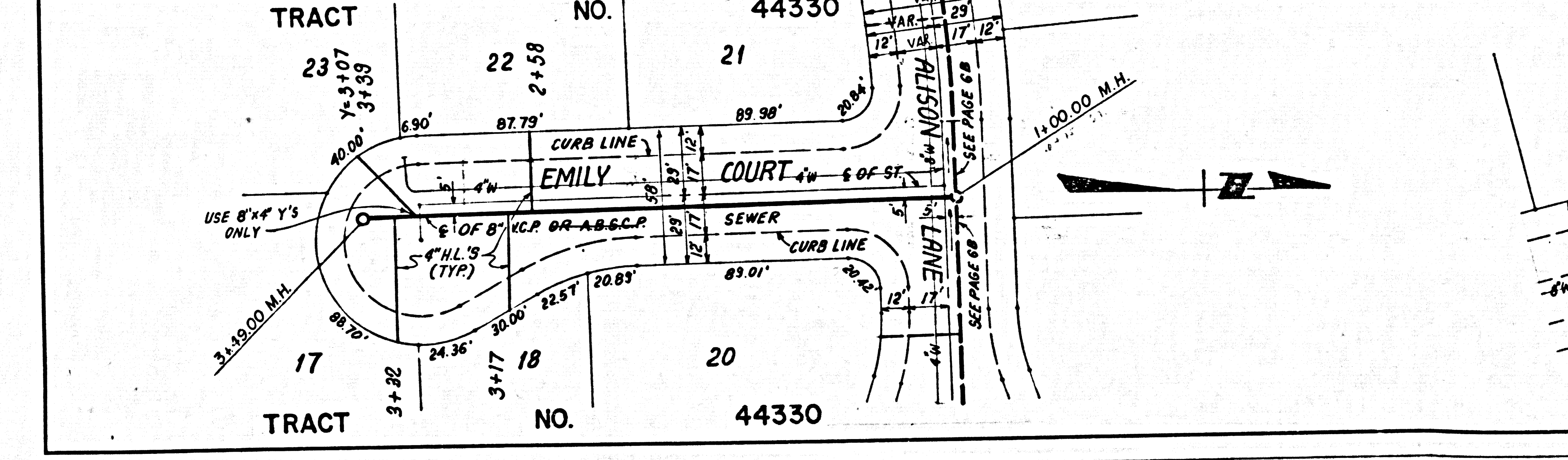




PC. 10476 PAGE 5  
 NO L.A. CO. CHARGE FOR CONNECTIONS. SEE COUNTY SAN. DIST. FOR SPECIAL CONN. CHARGES.

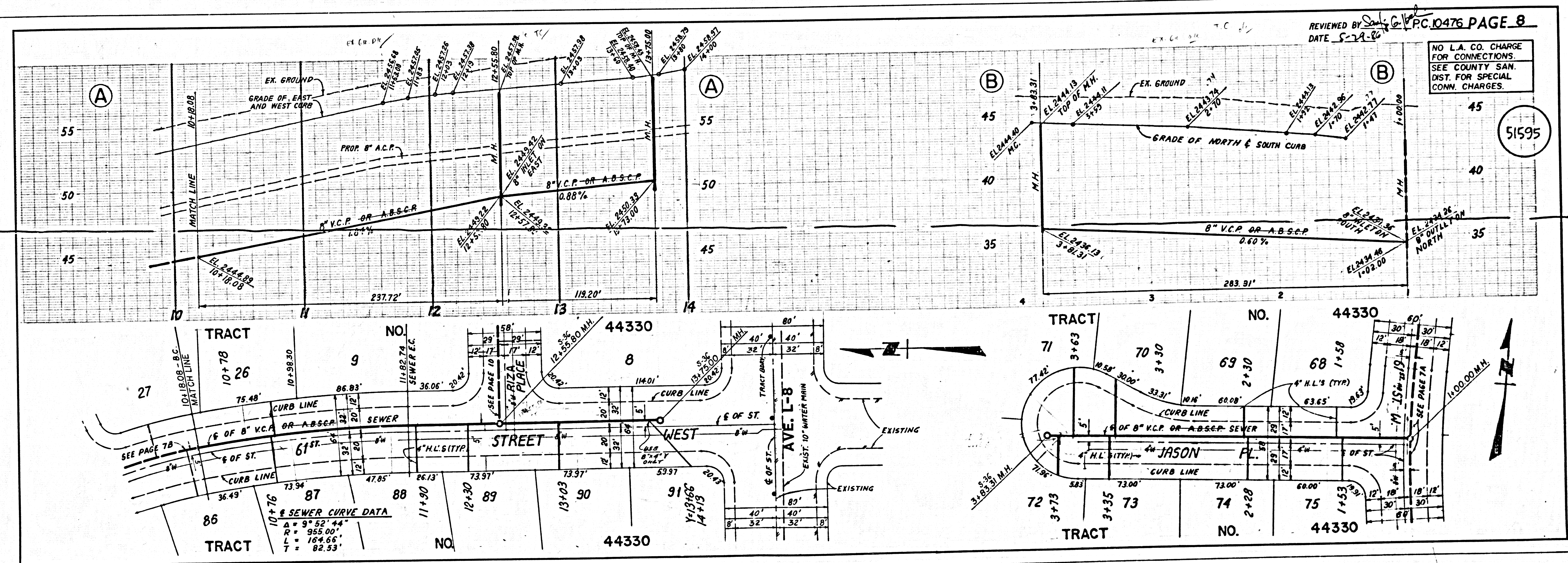
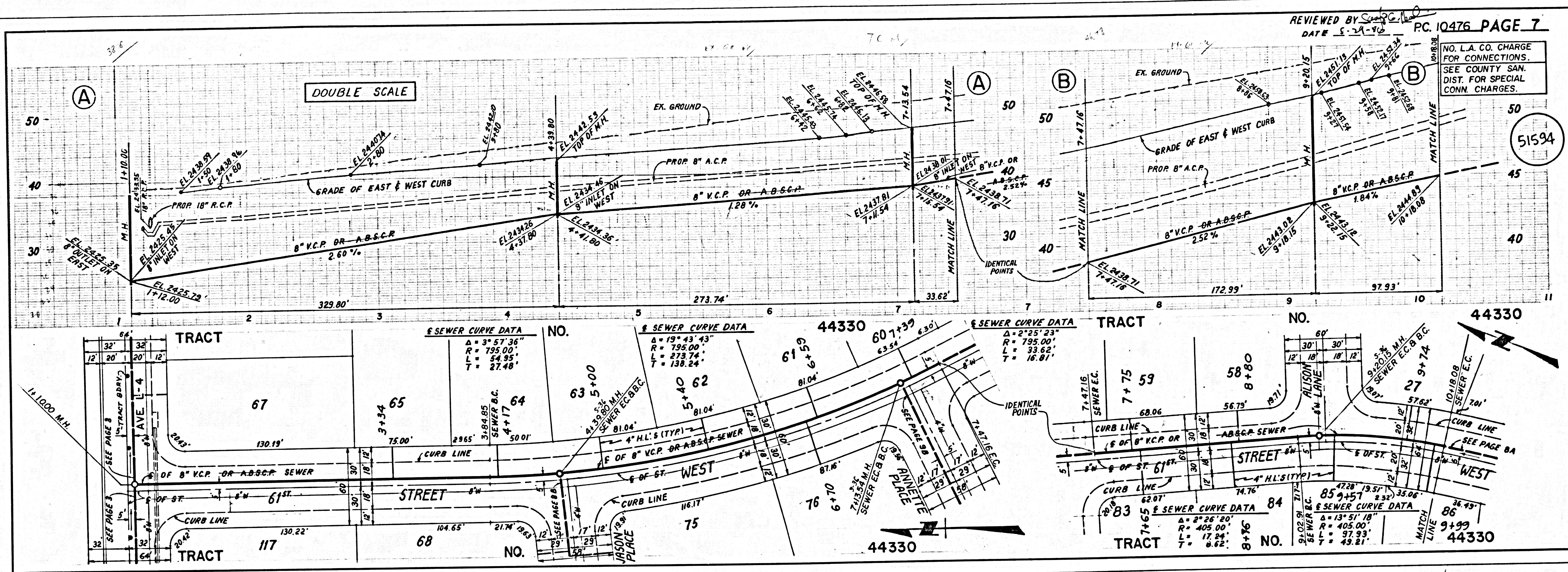


PC. 10476 PAGE 6  
 NO L.A. CO. CHARGE FOR CONNECTIONS. SEE COUNTY SAN. DIST. FOR SPECIAL CONN. CHARGES.



51592  
 51593  
 51594  
 51595  
 51596  
 51597  
 51598  
 51599  
 51600  
 51601  
 51602  
 51603  
 51604  
 51605  
 51606  
 51607  
 51608  
 51609  
 51610  
 51611  
 51612  
 51613  
 51614  
 51615  
 51616  
 51617  
 51618  
 51619  
 51620  
 51621  
 51622  
 51623  
 51624  
 51625  
 51626  
 51627  
 51628  
 51629  
 51630  
 51631  
 51632  
 51633  
 51634  
 51635  
 51636  
 51637  
 51638  
 51639  
 51640  
 51641  
 51642  
 51643  
 51644  
 51645  
 51646  
 51647  
 51648  
 51649  
 51650  
 51651  
 51652  
 51653  
 51654  
 51655  
 51656  
 51657  
 51658  
 51659  
 51660  
 51661  
 51662  
 51663  
 51664  
 51665  
 51666  
 51667  
 51668  
 51669  
 51670  
 51671  
 51672  
 51673  
 51674  
 51675  
 51676  
 51677  
 51678  
 51679  
 51680  
 51681  
 51682  
 51683  
 51684  
 51685  
 51686  
 51687  
 51688  
 51689  
 51690  
 51691  
 51692  
 51693  
 51694  
 51695  
 51696  
 51697  
 51698  
 51699  
 51700  
 51701  
 51702  
 51703  
 51704  
 51705  
 51706  
 51707  
 51708  
 51709  
 51710  
 51711  
 51712  
 51713  
 51714  
 51715  
 51716  
 51717  
 51718  
 51719  
 51720  
 51721  
 51722  
 51723  
 51724  
 51725  
 51726  
 51727  
 51728  
 51729  
 51730  
 51731  
 51732  
 51733  
 51734  
 51735  
 51736  
 51737  
 51738  
 51739  
 51740  
 51741  
 51742  
 51743  
 51744  
 51745  
 51746  
 51747  
 51748  
 51749  
 51750  
 51751  
 51752  
 51753  
 51754  
 51755  
 51756  
 51757  
 51758  
 51759  
 51760  
 51761  
 51762  
 51763  
 51764  
 51765  
 51766  
 51767  
 51768  
 51769  
 51770  
 51771  
 51772  
 51773  
 51774  
 51775  
 51776  
 51777  
 51778  
 51779  
 51780  
 51781  
 51782  
 51783  
 51784  
 51785  
 51786  
 51787  
 51788  
 51789  
 51790  
 51791  
 51792  
 51793  
 51794  
 51795  
 51796  
 51797  
 51798  
 51799  
 51800  
 51801  
 51802  
 51803  
 51804  
 51805  
 51806  
 51807  
 51808  
 51809  
 51810  
 51811  
 51812  
 51813  
 51814  
 51815  
 51816  
 51817  
 51818  
 51819  
 51820  
 51821  
 51822  
 51823  
 51824  
 51825  
 51826  
 51827  
 51828  
 51829  
 51830  
 51831  
 51832  
 51833  
 51834  
 51835  
 51836  
 51837  
 51838  
 51839  
 51840  
 51841  
 51842  
 51843  
 51844  
 51845  
 51846  
 51847  
 51848  
 51849  
 51850  
 51851  
 51852  
 51853  
 51854  
 51855  
 51856  
 51857  
 51858  
 51859  
 51860  
 51861  
 51862  
 51863  
 51864  
 51865  
 51866  
 51867  
 51868  
 51869  
 51870  
 51871  
 51872  
 51873  
 51874  
 51875  
 51876  
 51877  
 51878  
 51879  
 51880  
 51881  
 51882  
 51883  
 51884  
 51885  
 51886  
 51887  
 51888  
 51889  
 51890  
 51891  
 51892  
 51893  
 51894  
 51895  
 51896  
 51897  
 51898  
 51899  
 51900  
 51901  
 51902  
 51903  
 51904  
 51905  
 51906  
 51907  
 51908  
 51909  
 51910  
 51911  
 51912  
 51913  
 51914  
 51915  
 51916  
 51917  
 51918  
 51919  
 51920  
 51921  
 51922  
 51923  
 51924  
 51925  
 51926  
 51927  
 51928  
 51929  
 51930  
 51931  
 51932  
 51933  
 51934  
 51935  
 51936  
 51937  
 51938  
 51939  
 51940  
 51941  
 51942  
 51943  
 51944  
 51945  
 51946  
 51947  
 51948  
 51949  
 51950  
 51951  
 51952  
 51953  
 51954  
 51955  
 51956  
 51957  
 51958  
 51959  
 51960  
 51961  
 51962  
 51963  
 51964  
 51965  
 51966  
 51967  
 51968  
 51969  
 51970  
 51971  
 51972  
 51973  
 51974  
 51975  
 51976  
 51977  
 51978  
 51979  
 51980  
 51981  
 51982  
 51983  
 51984  
 51985  
 51986  
 51987  
 51988  
 51989  
 51990  
 51991  
 51992  
 51993  
 51994  
 51995  
 51996  
 51997  
 51998  
 51999  
 52000

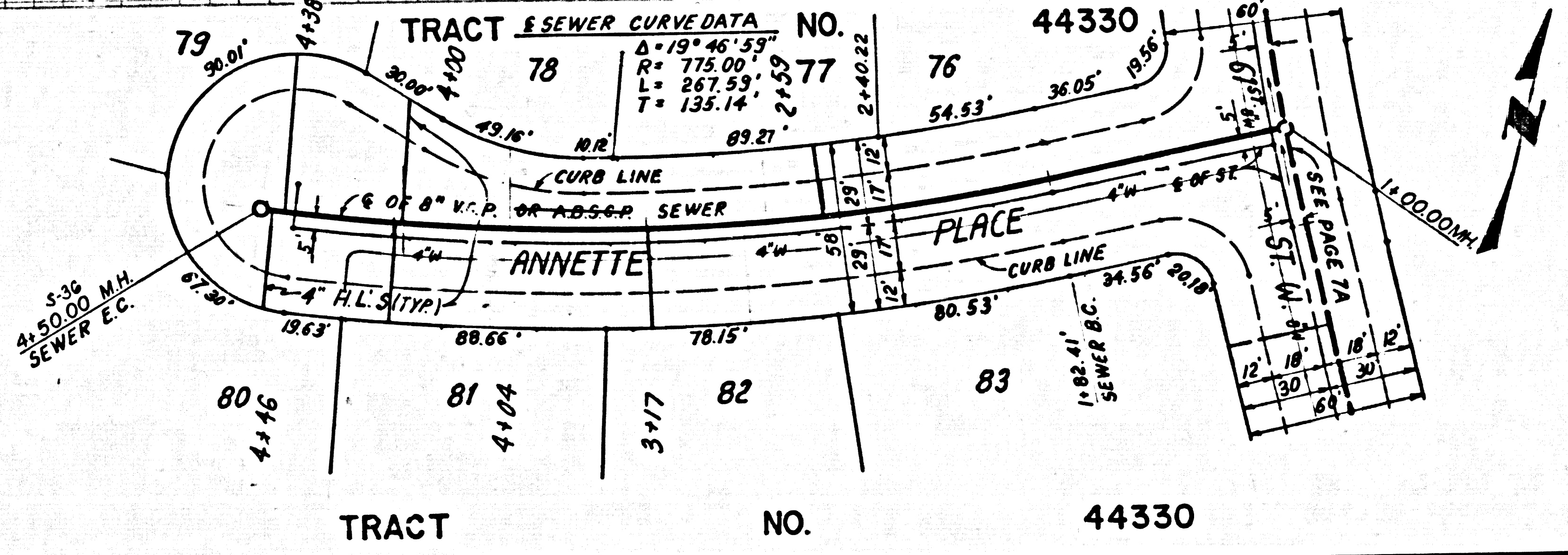
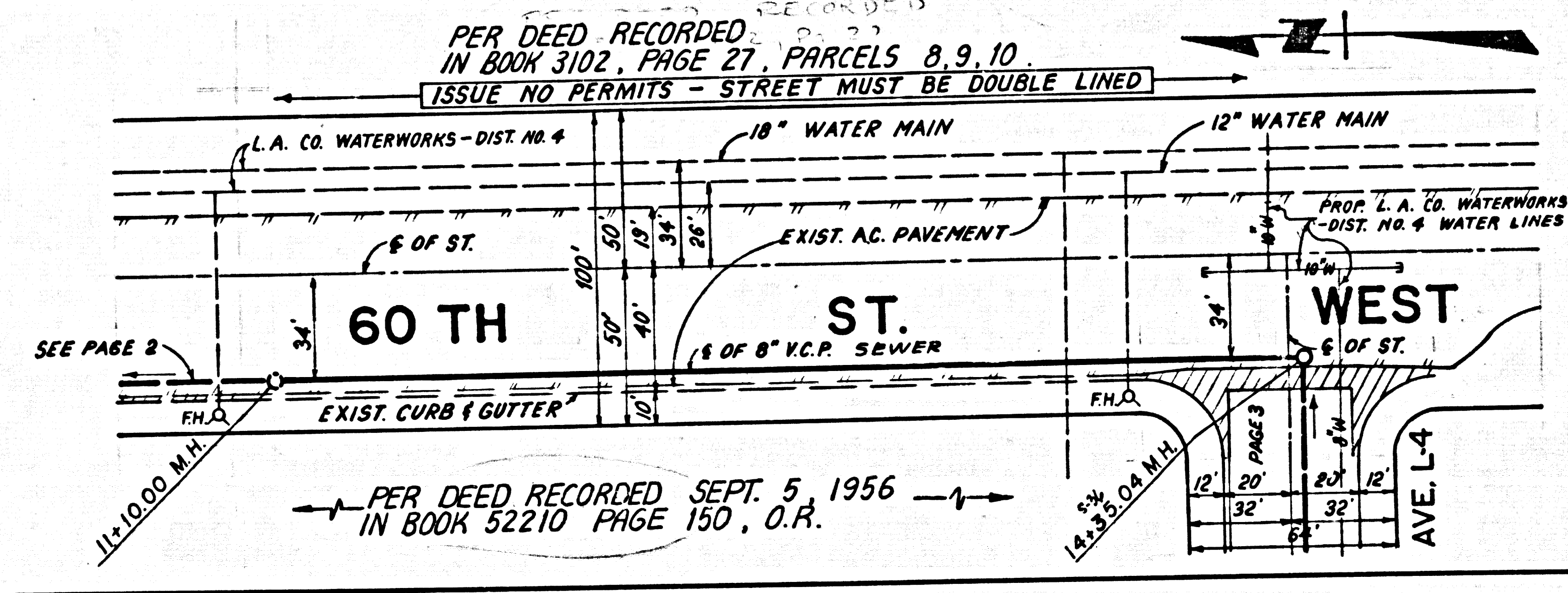
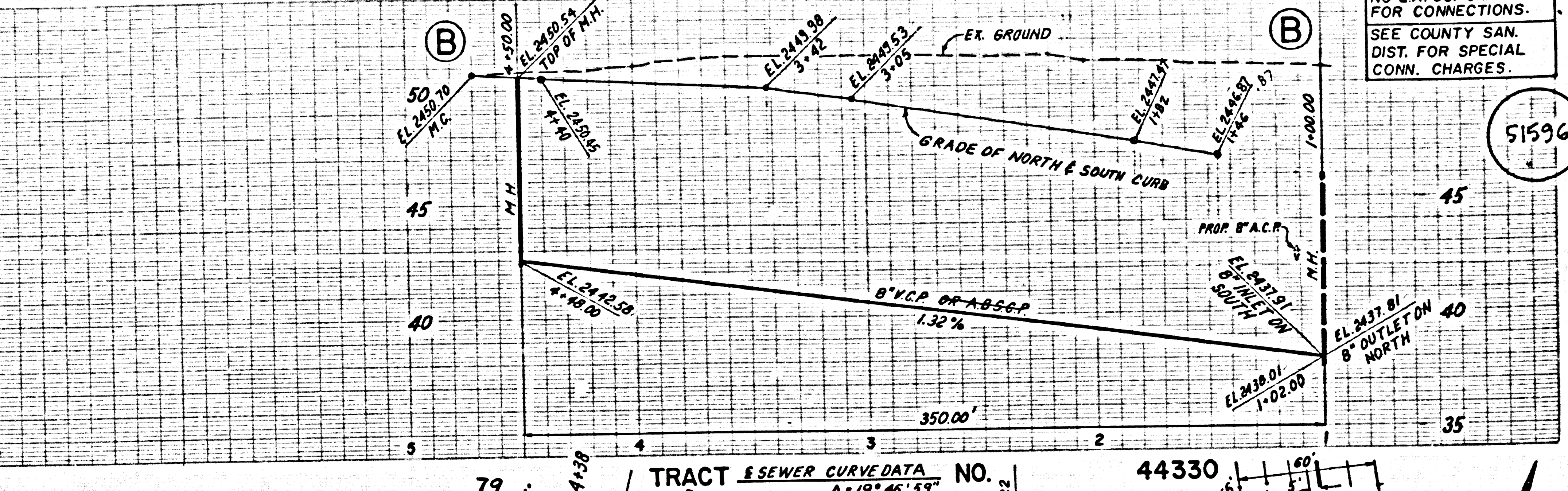
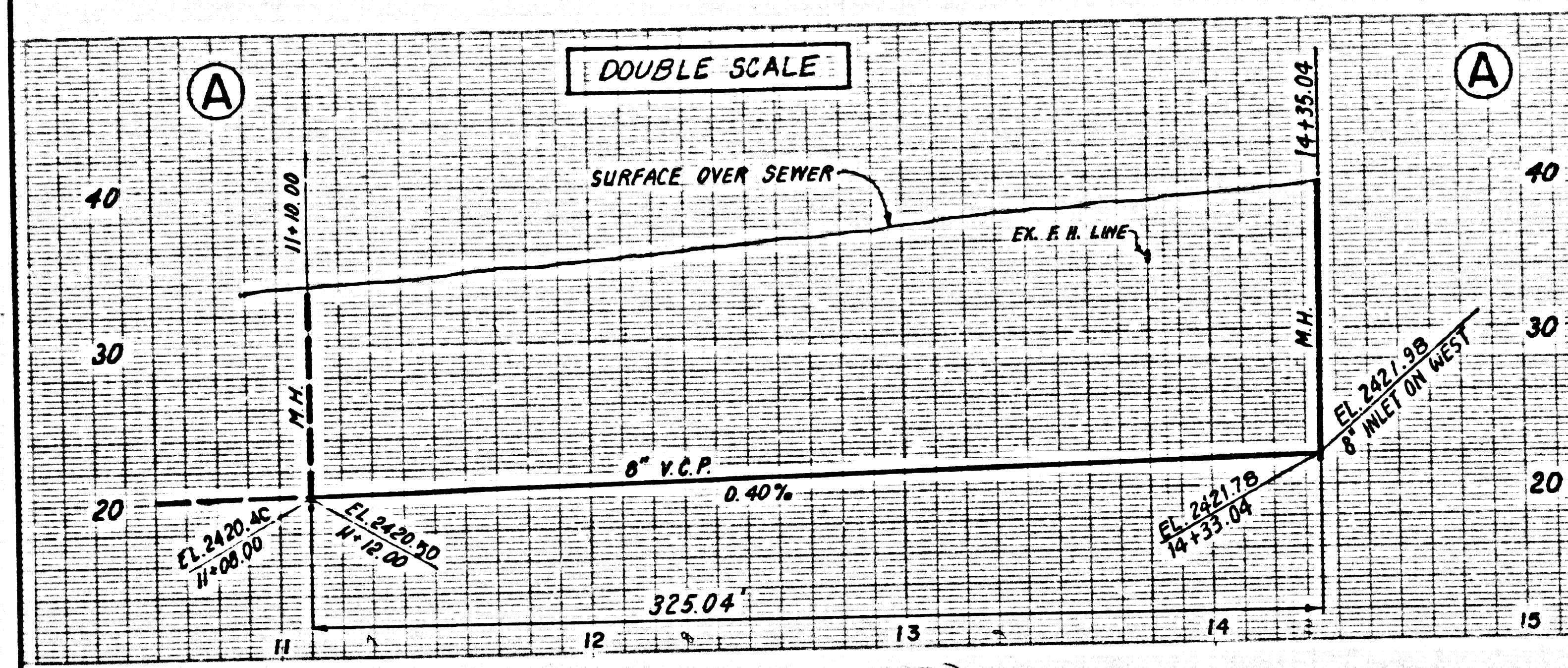




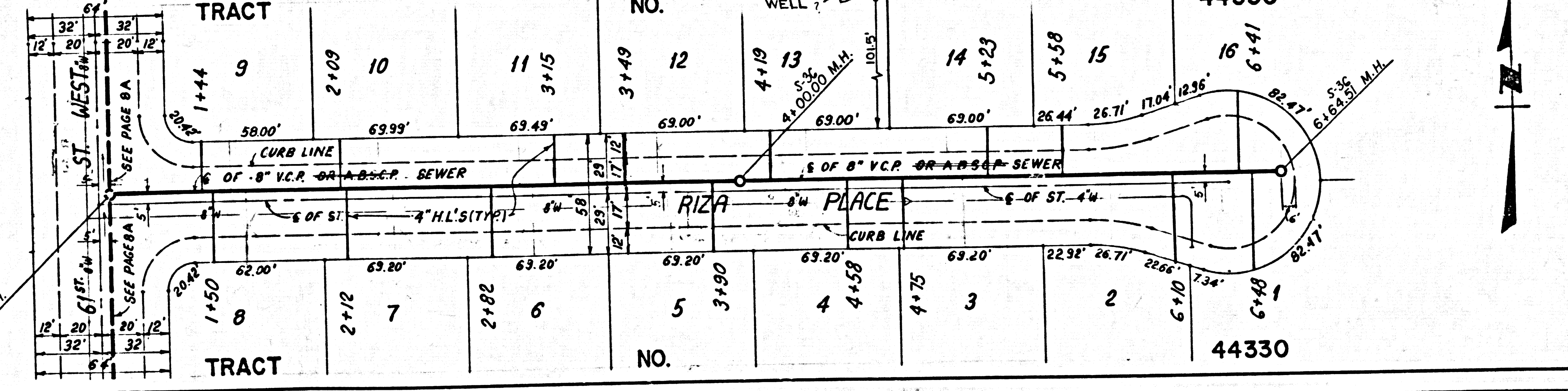
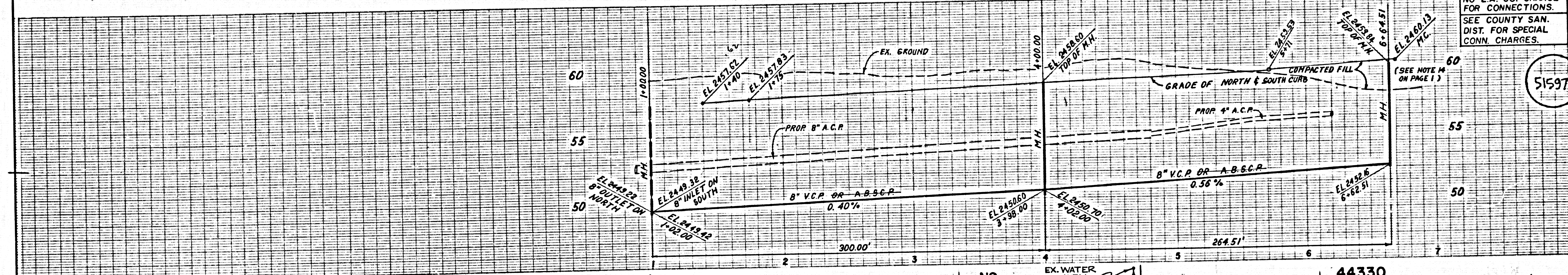
4 2701.29 05349 ON TRACT



NO L.A. CO. CHARGE FOR CONNECTIONS. SEE COUNTY SAN. DIST. FOR SPECIAL CONN. CHARGES.

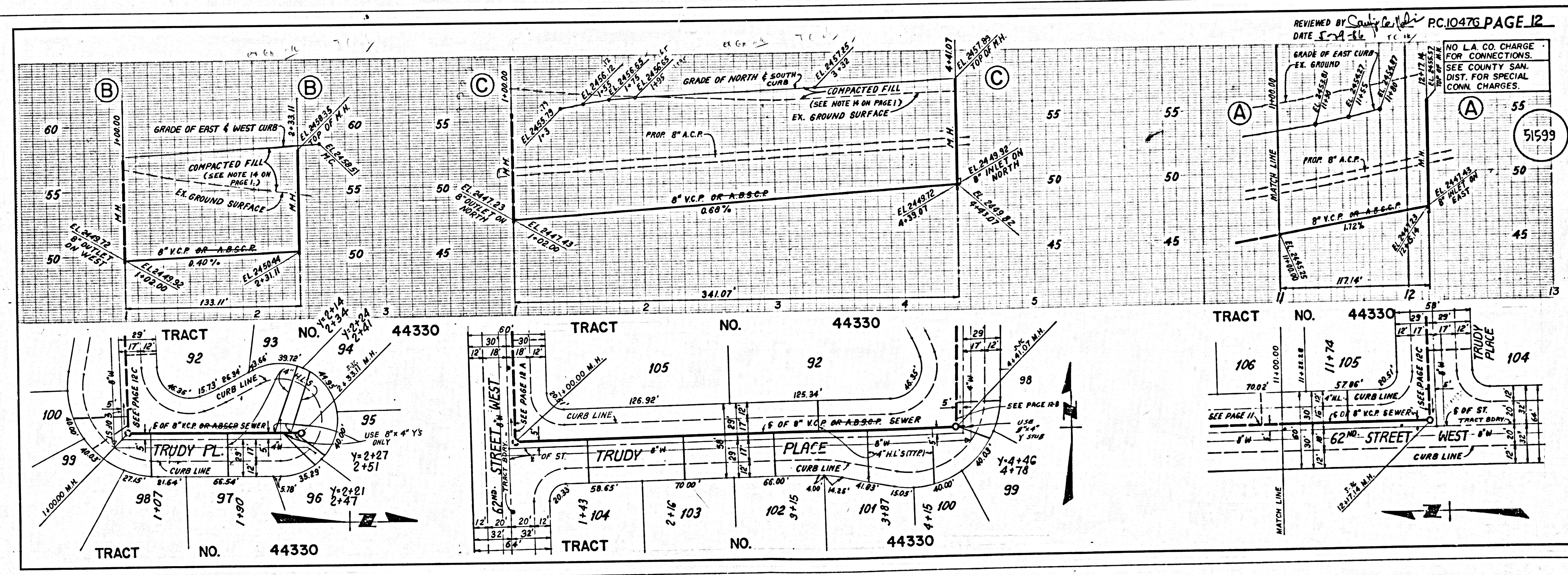
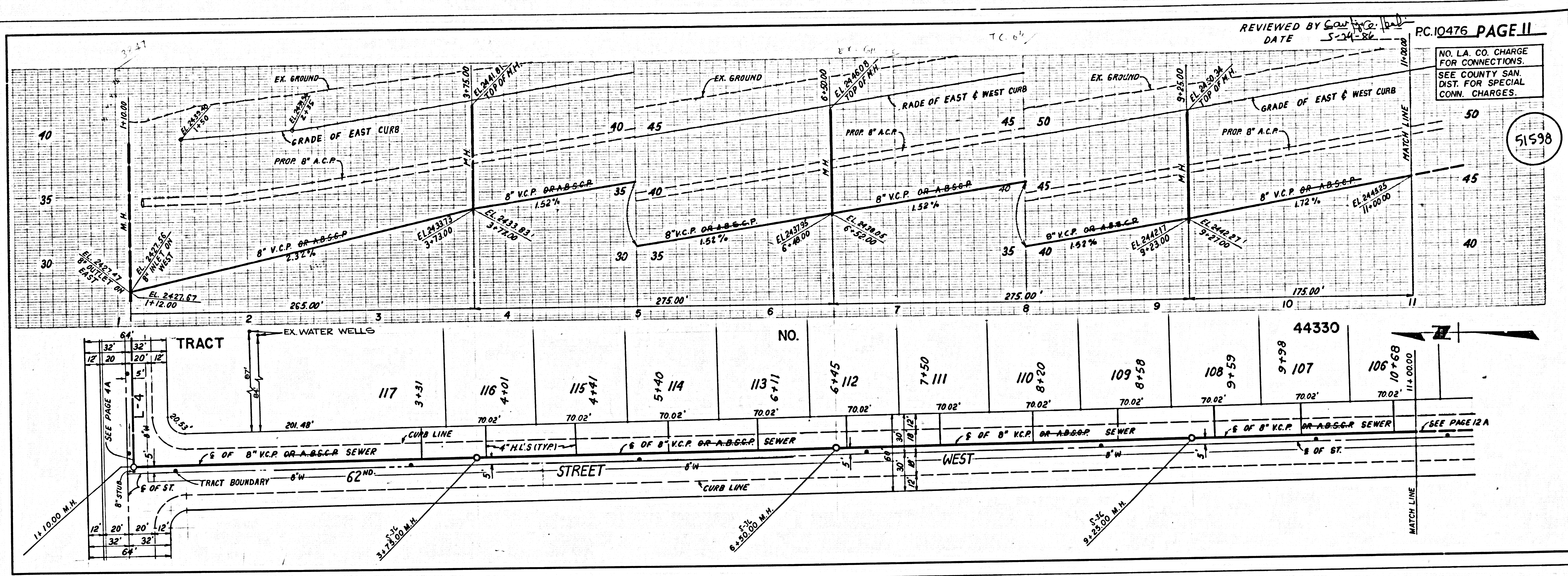


NO L.A. CO. CHARGE FOR CONNECTIONS. SEE COUNTY SAN. DIST. FOR SPECIAL CONN. CHARGES.



2  
 27401.39  
 05343 ON TRACT





PC 10476  
TRACT NO. 44330