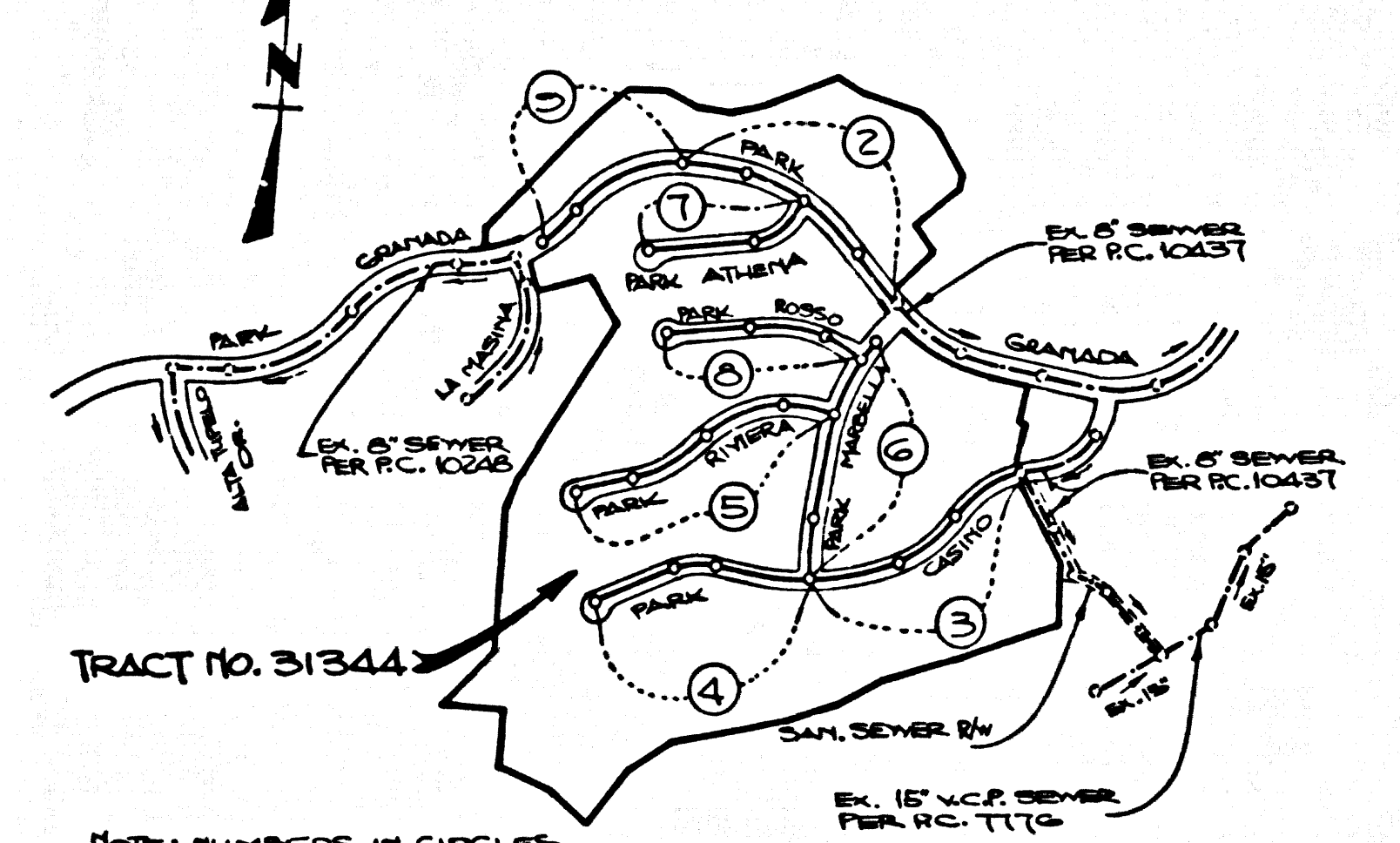


B.M. B.T. 10013 ELEV. 1027.800.  
L & BR IN CONC. CB 47 FT S/O  
PARK GRANADA & 45 FT W/O  
PARK AT CALABASAS

MALIBU QUAD. 192

REVISION NO.	DATE	BY
1	9/18/86	[Signature]



INDEX MAP  
TRACT NO. 31344  
P.C. 10481  
SCALE: 1"=100'

ISSUE NO HOUSE CONNECTION PERMITS UNTIL P.C. 10481 IS ACCEPTED FOR USE BY L.A. COUNTY  
ISSUE PERMITS TO LOTS 1, 2 & 3 FROM P.C. 10437, PAGE 4 AND TO LOT 66 FROM P.C. 10248, PAGE 3D

**PRIVATE ENGINEER'S NOTICE TO CONTRACTORS**

The existence and location of any underground utility pipes or structures shown on these plans are obtained by a search of the available records to the best of our knowledge there are no existing utilities except as shown on these plans. The contractor is required to take due precautionary measures to protect the utility lines shown and any other lines not of record or not shown on these plans. The contractor shall be responsible for notifying "UNDERGROUND SERVICE ALERT" at 1-800-422-4133 two working days prior to any excavation or construction.

**CONSTRUCTION NOTES CONT'D.**

- FULL COMPLIANCE WITH PART IV OF THE SPECIAL PROVISIONS IS REQUIRED FOR THE INSTALLATION OF A.B.S. COMPOSITE PIPE.
- MANHOLE WATER STOP GASKETS AND CLAMPS ARE REQUIRED FOR THE CONNECTION OF A.B.S. COMPOSITE PIPE TO MANHOLE STRUCTURES.
- A.B.S. SOLID WALL PIPE MUST BE USED FOR WYE AND HOUSE LATERAL CONNECTIONS TO A.B.S. COMPOSITE MAINLINE SEWER PIPE.
- A.B.S. COMPOSITE PIPE SHALL BE BEDDED IN CONFORMANCE WITH THE TABLE IN SECTION B-3.1, OF PART IV OF THE SPECIAL PROVISIONS.
- THREE DEGREE REFLECTION COUPLERS ARE REQUIRED FOR RADIUS OF CURVATURE LESS THAN 380 FEET WHEN USING 8" A.B.S. COMPOSITE PIPE.
- NO CONNECTIONS FOR DISPOSAL OF INDUSTRIAL WASTE IS ALLOWED IF A.B.S. COMPOSITE PIPE IS USED.
- SEWER LINE CURVATURE SHALL NOT BE ACHIEVED BY PULLING OF JOINTS OR BEVELING PIPE ENDS WHEN USING PLASTIC PIPE INCLUDING A.B.S. COMPOSITE PIPE.
- ALL WYE AND/OR HOUSE LATERALS ARE TO BE LOCATED AT LEAST FIVE FEET APART & WHEN POSSIBLE NOT CLOSER THAN FIVE FEET TO ANY MANHOLE.
- A.B.S. SOLID WALL PIPE IS NOT ACCEPTABLE FOR USE AS MAINLINE SEWER.
- ONLY WYE BRANCHES ARE TO BE USED FOR CONNECTION TO A.B.S. COMPOSITE MAINLINE SEWER PIPE.
- TESTING PER LAS VIRGENES MUNICIPAL WATER DISTRICT
  - INFILTRATION & LEAKAGE TESTS: METHOD USED FOR TESTING WILL BE THE SAME AS L.A. COUNTY EXCEPT THE FORMULA TO BE USED IS AS FOLLOWS:  
0.033 GALLONS/MINUTE/INCH OF DIAMETER/1,000 FEET OR 250 GALLONS/DAY/INCH OF DIAMETER/MILE
  - MANHOLE LEAKAGE TESTS: AT THE DISCRETION OF THE DISTRICT'S REPRESENTATIVE ONE MANHOLE OUT OF EVERY TEN MANHOLES AND A MINIMUM OF TWO WILL BE FILLED WITH WATER. AFTER THREE HOURS WILL BE CHECKED FOR LEAKAGE WITH NO DROP IN LEVEL; FOR EVERY ONE MANHOLE NOT PASSING TESTS, FIVE MORE WILL BE TESTED AT THE DISCRETION OF THE DISTRICT'S REPRESENTATIVE.
  - AIR TESTING: WHEN THE DIFFERENCE IN ELEVATION BETWEEN THE INVERT IF THE UPPER STRUCTURE & THE INVERT OF THE LOWER STRUCTURE IS MORE THAN SIX (6) FEET, AN AIR TEST WILL BE MADE.  
THE TIME TAKEN TO LOSE ONE (1) POUND PER SQUARE INCH GAUGE PRESSURE FROM THREE (3) POUNDS PER SQUARE INCH GAUGE PRESSURE TO TWO (2) POUNDS PER SQUARE INCH GAUGE PRESSURE SHALL NOT BE LESS THAN THOSE SHOWN ON THE FOLLOWING TABLE:
 

MAIN PIPE DIAMETER	MINIMUM TIME LOSS
8" - 12"	3 MINUTES
14" - 18"	5 MINUTES
20" - 24"	7 MINUTES
26" - 30"	10 MINUTES

 IF THE TIME IS LESS THAN LISTED IN THE TABLE ABOVE, THE CONTRACTOR SHALL MAKE SUCH REPAIRS AS ARE NECESSARY TO ELIMINATE THE EXCESSIVE LEAKAGE.

**GENERAL NOTES:**

- ELEVATIONS ARE IN FEET ABOVE U.S.C. & G.S. SEA LEVEL DATUM OF 1929
- NO REVISIONS SHALL BE MADE IN THESE PLANS WITHOUT THE APPROVAL OF THE DIRECTOR OF PUBLIC WORKS.
- NO REPRESENTATIVE OF THE DEPT. OF PUBLIC WORKS WILL SURVEY OR LAY OUT ANY PORTION OF THE WORK.
- GRADES TO WHICH THIS IMPROVEMENT IS TO BE CONSTRUCTED ARE SHOWN ON PLANS AND PROFILE GRADE POINTS FOR TOP OF CURBS, CENTER LINE OF STREETS, OR CENTER LINE OF ALLEYS ARE SHOWN BY CIRCLES ON PROFILES AT ALL POINTS BETWEEN DESIGNATED POINTS. THE GRADE SHALL BE ESTABLISHED SO AS TO CONFORM TO A STRAIGHT LINE "LAW" BETWEEN SAID DESIGNATED POINTS.
- THE PRIVATE ENGINEER SHALL FURNISH THE DEPT. OF PUBLIC WORKS WITH GRADE SHEETS & STATIONING FOR ALL HOUSE LATERALS AND "Y" OR "T" BRANCHES AND SHALL PROVIDE STAKES FOR THEM AT THEIR PROPER LOCATIONS WITH STATIONING PLAINLY MARKED. ALL HOUSE LATERALS SHALL BE CONSTRUCTED IN A STRAIGHT ALIGNMENT AT RIGHT ANGLES FROM THE MAIN LINE SEWER EXCEPT AS SHOWN ON THE PLANS. HOUSE LATERALS FROM CHIMNEYS SHALL NOT HAVE AN ANGLE OF LESS THAN 45° WITH THE MAIN LINE SEWER. ANY CHANGE IN ALIGNMENT SHALL BE REQUESTED IN WRITING BY THE PRIVATE ENGINEER.
- THE PRIVATE ENGINEER SHALL FURNISH THE HOUSE LATERAL DEPTH AT THE PROPERTY LINE BELOW THE TOP OF CURB ELEVATION FOR EACH HOUSE LATERAL ON THE GRADE SHEET.
- BEFORE WORK CAN BE STARTED, THE CONTRACTOR MUST OBTAIN A PERMIT TO EXCAVATE IN COUNTY STREETS FROM THE ROAD ELEMENT OF THE L.A. DEPT. OF PUBLIC WORKS, DIST. OFFICE NO. 3, AND PAY A FEE TO THE DIRECTOR OF PUBLIC WORKS, 550 S. VERMONT AVE., LOS ANGELES, CA 90004, TO COVER THE COST OF CONSTRUCTION INSPECTION AND RECORD PLANS.
- IF WORK IS TO BE DONE IN A STATE HIGHWAY A PERMIT MUST BE OBTAINED FROM THE STATE OF CALIFORNIA, DIVISION OF HIGHWAYS, 120 SOUTH SPRING STREET, LOS ANGELES, CALIFORNIA.
- APPROVAL OF THIS PLAN BY THE COUNTY OF LOS ANGELES DOES NOT CONSTITUTE A REPRESENTATION AS TO THE ACCURACY OF THE LOCATION OF OR THE EXISTENCE OR NON-EXISTENCE OF ANY UNDERGROUND UTILITY PIPE, OR STRUCTURE WITHIN THE LIMITS OF THIS PROJECT. THIS NOTE APPLIES TO ALL PAGES.
- REFER TO SECTION 7104.1 OF THE STANDARD SPECIFICATIONS, REGARDING SAFETY ORDERS.
- BEFORE THE ISSUANCE OF THE REQUIRED SEWER CONSTRUCTION PERMIT THE CONTRACTOR SHALL OBTAIN AND FILE WITH THE COUNTY ENGINEER COPIES OF A PERMIT TO EXCAVATE IN COUNTY STREETS FROM THE LOS ANGELES COUNTY ROAD DEPARTMENT, A PERMIT FOR EXCAVATIONS AND TRENCHES FROM THE STATE OF CALIFORNIA, DIVISION OF INDUSTRIAL SAFETY AND A CERTIFICATE OF WORKERS COMPENSATION INSURANCE WITH THE DEPARTMENT OF PUBLIC WORKS, 580 SOUTH VERMONT AVENUE, LOS ANGELES, CALIFORNIA 90005, NAMED AS THE CERTIFICATE HOLDER TO BE NOTIFIED 30 DAYS PRIOR TO CANCELLATION OF POLICY.

**CONSTRUCTION NOTES:**

- WORK SHALL BE CONSTRUCTED ACCORDING TO THE STANDARD SPECIFICATIONS FOR PUBLIC WORKS CONSTRUCTION (1995 EDITION W/ SUPPLEMENTS) DEPT. OF PUBLIC WORKS SPECIAL PROVISIONS FOR THE CONSTRUCTION OF SANITARY SEWERS DATED SEPT. 21, 1978, AND SHALL BE PROSECUTED ONLY IN THE PRESENCE OF THE COUNTY ENGINEER.
- THE CONTRACTOR SHALL NOTIFY THE CONSTRUCTION DIV. - PUBLIC WORKS DEPT. TEL. (213) 226-8281 AT LEAST 24 HOURS BEFORE STARTING ANY WORK UNDER THIS CONTRACT.
- HOUSE LATERALS TO BE CONSTRUCTED WITH INVERTS AT PROPERTY LINE 5 FEET BELOW CURB GRADE EXCEPT AS NOTED.
- WYE OR TEE BRANCHES MAY BE USED FOR CONNECTIONS TO MAINLINE SEWERS EXCEPT AS NOTED.
- ALL STRUCTURES SHALL BE EITHER BRICK OR CONCRETE. ALL STRUCTURES SHALL BE MADE WITH A RUBBER SLEEVE JOINT, TYPE "C" OR "D".
- PROVIDE STAKES ON THE PROPERTY LINE OR PROPERTY LINES PRODUCED AT RIGHT ANGLES TO THE SEWER LINE AT THE CENTER LINE OF EACH MANHOLE.
- MANHOLE TOPS IN UNIMPROVED RIGHTS OF WAY TO BE SIX INCHES ABOVE FINISHED GRADE.
- WITHEMED CLAY PIPE JOINTS SHALL BE TYPE "D" OR "B" PER STANDARD SPECIFICATIONS SECTION 308.2.
- IF A POWER POLE IS WITHIN THREE FEET OF THE SEWER, THE SEWER SHALL BE ENCASED PER S-25 CASE II, TWO FEET ON EACH SIDE FROM THE POINT OF INTERFERENCE.
- IF DURING THE COURSE OF CONSTRUCTION IT IS DETERMINED THAT THERE IS LESS THAN FOUR FEET OF COVER OVER THE TOP OF A MAIN LINE OR HOUSE LATERAL SEWER WHICH IS NOT INDICATED ON THE PLANS, THE PIPE SHALL BE ENCASED PER S-25 CASE II UNLESS OTHERWISE APPROVED BY THE DIRECTOR OF PUBLIC WORKS.
- ALL JOINTS BETWEEN CAST IRON PIPE AND WITHEMED CLAY PIPE SHALL BE MADE WITH A RUBBER SLEEVE JOINT, TYPE "C" OR "D".
- ALL JOINTS BETWEEN CAST IRON PIPE & A.B.S. PIPE SHALL BE MADE WITH A RUBBER SLEEVE JOINT, TYPE "C" OR "D".
- IT IS THE RESPONSIBILITY OF THE CONTRACTOR TO VERIFY THE LOCATION OF ALL EXISTING UTILITIES AND SPECIAL PROVISIONS.
- RESURFACE ALL TRENCHES WITHIN WAVED AREAS TO MEET L.A. COUNTY PUBLIC WORKS OR CALIF. STATE HIGHWAY REQUIREMENTS IN ACCORDANCE WITH PERMITS.
- FULL COMPLIANCE WITH SECTION 308.1.3.3 OF THE SPECIAL PROVISIONS WILL BE REQUIRED FOR BACKFILL IN STREETS. CERTIFICATION OF BACKFILL COMPACTION AND SAND EQUIVALENTS BY A QUALIFIED, REGISTERED TESTING LABORATORY SHALL BE PROVIDED BY THE PERMITTEE PRIOR TO THE ISSUANCE OF A CERTIFICATE OF PARTIAL ACCEPTANCE.
- SPECIAL BACKFILL IN EASEMENT CONSTRUCTION: (A) BACKFILL TRENCH AND REPLACE OTHER EARTH SO AS TO ACHIEVE THE NATURAL OR FINISHED GRADES AND SLOPES SHOWN ON THE GRADING PLAN APPROVED FOR THIS DEVELOPMENT BY THE BUILDING AND SAFETY DIVISION. (B) ALL BACKFILL AND EARTH REPLACED SHALL BE COMPACTED TO A MINIMUM OF 90% OF MAXIMUM DENSITY PER A.S.T.M. STD. METHOD OF TEST D998 BY 48 INCHES ACCEPTABLE CERTIFICATION OF SUCH COMPACTION SHALL BE SUBMITTED TO THE CONSTRUCTION DIV. - PUBLIC WORKS DEPT.

**DOUBLE SCALE**

PROFILE, ALIGNMENT AND GRADE OF  
**SANITARY SEWERS** PAGE 1

TO BE CONSTRUCTED IN  
**TRACT NO. 31344**

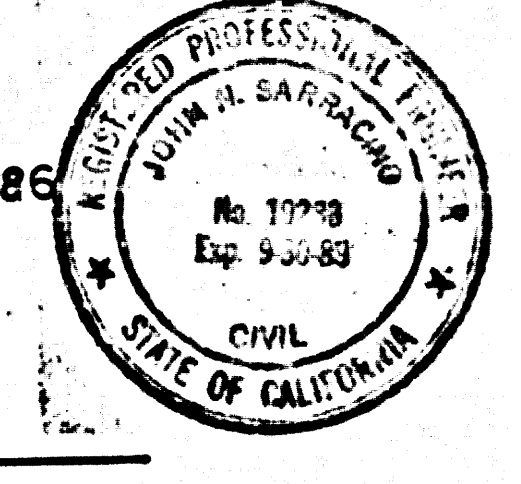
PRIVATE CONTRACT NO. 10481

C-232-G,H-2.3  
WS. 159-077  
5 SHEETS, 9 PAGES

SCALE: 1"=10' HORIZONTAL  
1"=1' VERTICAL  
JANUARY, 1986  
PREPARED IN THE OFFICES OF

LIND & HILLERUD, INC.

2005 WASHINGTON DRIVE  
SAN FERNANDO, CA 91108  
BY: JOHN N. SARRACINO  
REG. C.E. NO. 19233



THE FOLLOWING LATEST REVISED STANDARD REGS. ON FILE IN THE OFFICE OF THE DEPARTMENT OF PUBLIC WORKS SHALL APPLY IN THE CONSTRUCTION OF THIS PROJECT:

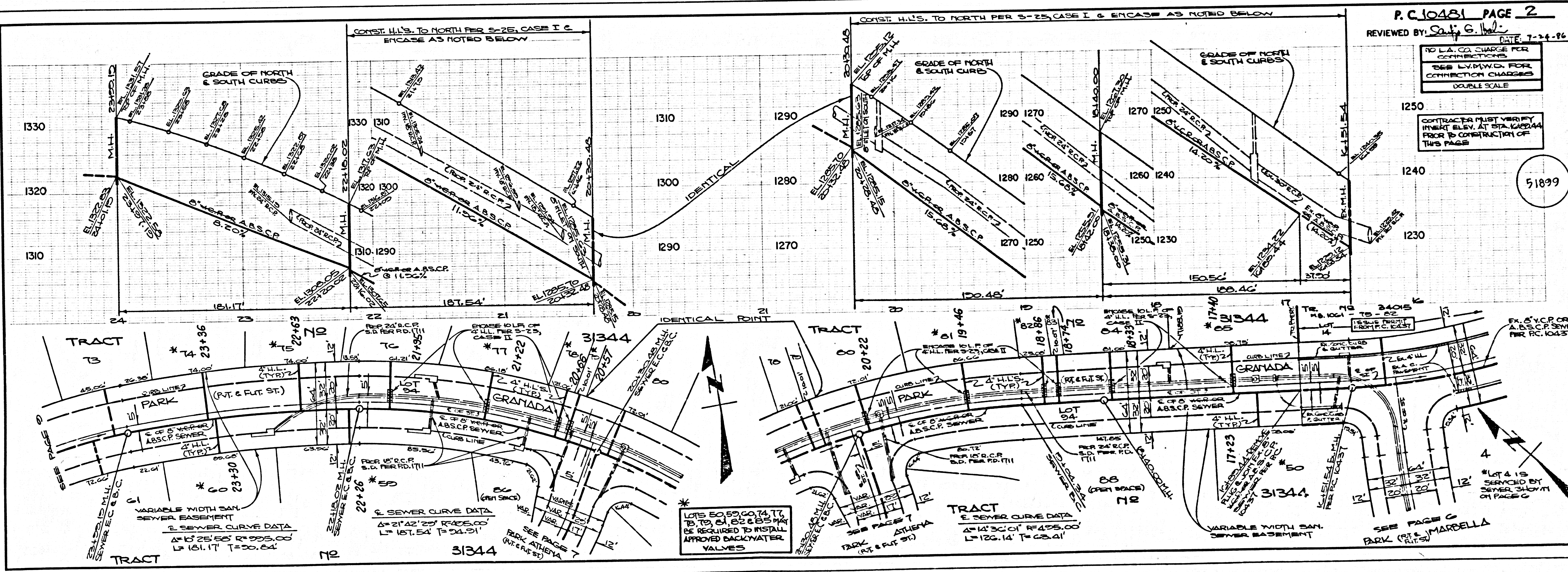
MANHOLE	5.1
MANHOLE FRAME SANITARY CONNECTION	5.2
BRICK SEWER MANHOLE	5.3
STANDARD MANHOLE STEP	5.4
SEWER FOR SEWER PIPE	5.5
CHASING AND ENCASING	5.6
WYE OR TEE SUPPORT	5.7
ALLOWABLE TRENCH WIDTHS	5.8
LOCKING MANHOLE FRAME AND COVER	5.9
NON-BRICKWORK PRECAST CONCRETE SEWER MANHOLE	5.10

COUNTY OF LOS ANGELES, CALIFORNIA  
LAS VIRGENES MUNICIPAL WATER DISTRICT

THOMAS A. TIDENANSON, DIRECTOR  
DEPARTMENT OF PUBLIC WORKS  
APPROVED: [Signature] 7/24/86  
H.W. STOKES, CHIEF ENGINEER

CHECKED: [Signature] 7/24/86  
DATE: 11-3-86

CALABASAS M.D.G. DIST. 9.1



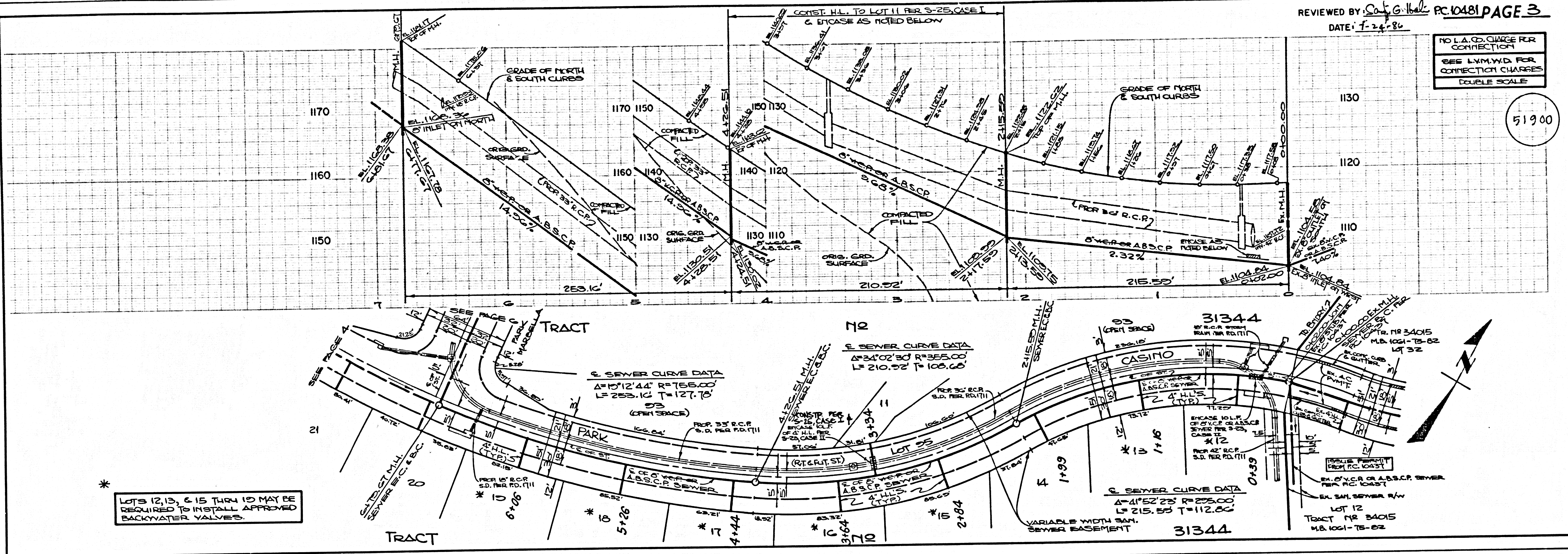
P.C. 10481 PAGE 2  
REVIEWED BY: [Signature] DATE: 7-24-86

NO L.A. CO. CHARGE FOR COMMUNICATIONS  
SEE L.V.M.W.D. FOR CONNECTION CHARGES  
DOUBLE SCALE

CONTRACTOR MUST VERIFY INVERT ELEV. AT STA. 10424.44 PRIOR TO CONSTRUCTION OF THIS PAGE

ASIS 91 TDAST



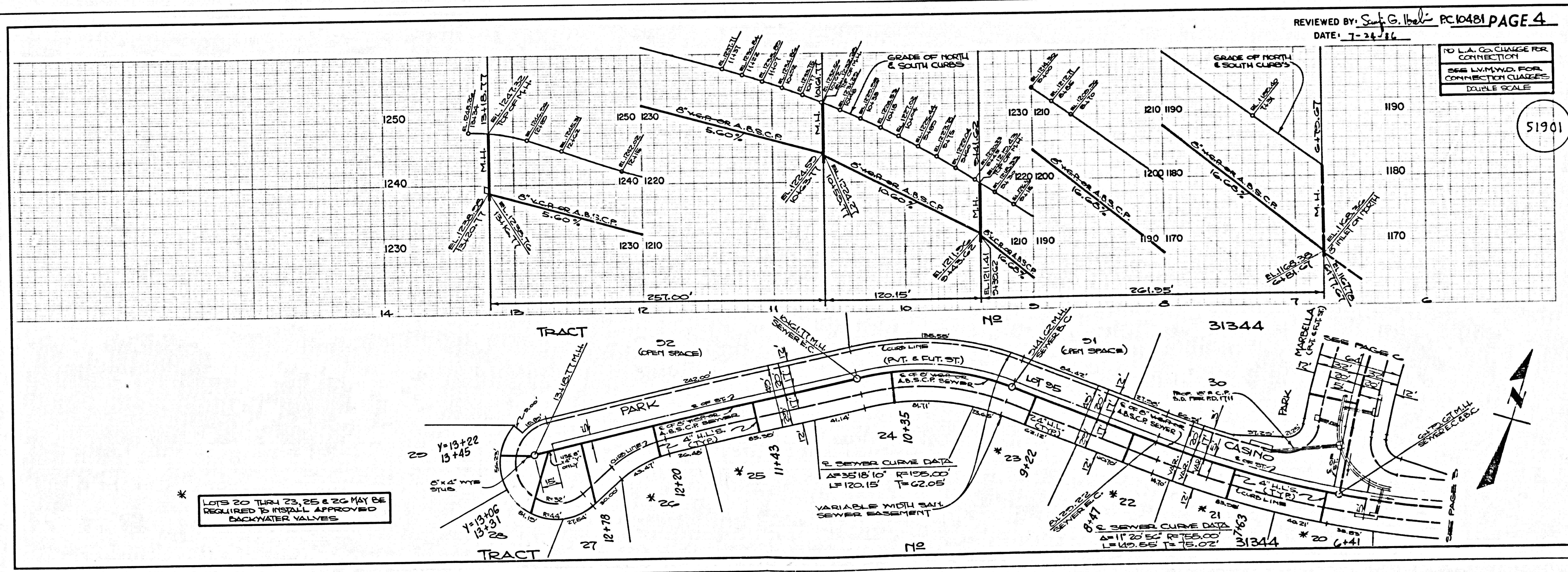


REVIEWED BY: *S. G. Hall* PC 10481 PAGE 3  
DATE: 7-24-86

NO L.A. CO. CHARGE FOR CONNECTION  
SEE L.V.M.V.D. FOR CONNECTION CHARGES  
DOUBLE SCALE

51900

18A01.39



REVIEWED BY: *S. G. Hall* PC 10481 PAGE 4  
DATE: 7-24-86

NO L.A. CO. CHARGE FOR CONNECTION  
SEE L.V.M.V.D. FOR CONNECTION CHARGES  
DOUBLE SCALE

51901

44518 94 T3A1T















