

SANITARY SEWERS

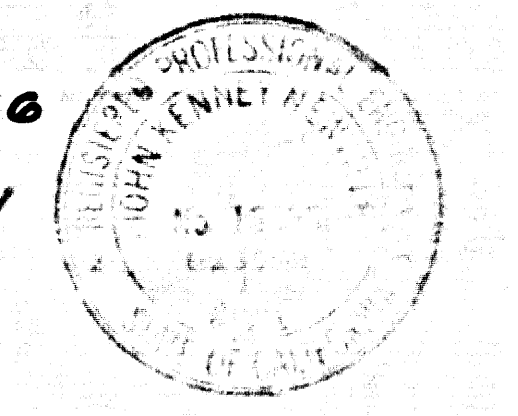
TO BE CONSTRUCTED IN OFF SITE SEWER FOR TRACT NO 43510

PRIVATE CONTRACT NO. 10485

A-51 & A-60

4 SHEETS, 2 PAGES

SCALE: VERT. 1"=4' HORIZ. 1"=40' MARCH, 1968 PREPARED IN THE OFFICES OF ENGINEERING SERVICE CORPORATION



GENERAL NOTES:

- 1. ELEVATIONS ARE IN FEET ABOVE U.S.C. & G.S. MEAN SEA LEVEL DATUM OF 1929.
2. NO REVISIONS SHALL BE MADE IN THESE PLANS WITHOUT THE APPROVAL OF THE COUNTY ENGINEER.
3. NO REPRESENTATIVE OF THE COUNTY ENGINEER WILL BE PRESENT AT ANY POSITION OF THE WORK...

CONSTRUCTION NOTES:

- 1. WORK SHALL BE CONSTRUCTED ACCORDING TO THE STANDARD SPECIFICATIONS FOR PUBLIC WORKS CONSTRUCTION.
2. THE CONTRACTOR SHALL NOTIFY THE COUNTY ENGINEER OF ANY CHANGES IN THE PLANS.
3. HOUSE LATERALS TO BE CONSTRUCTED WITH INVERTS AT PROPERTY LINE 8 FEET BELOW CURB GRADE EXCEPT AS NOTED...

DOUBLE SCALE

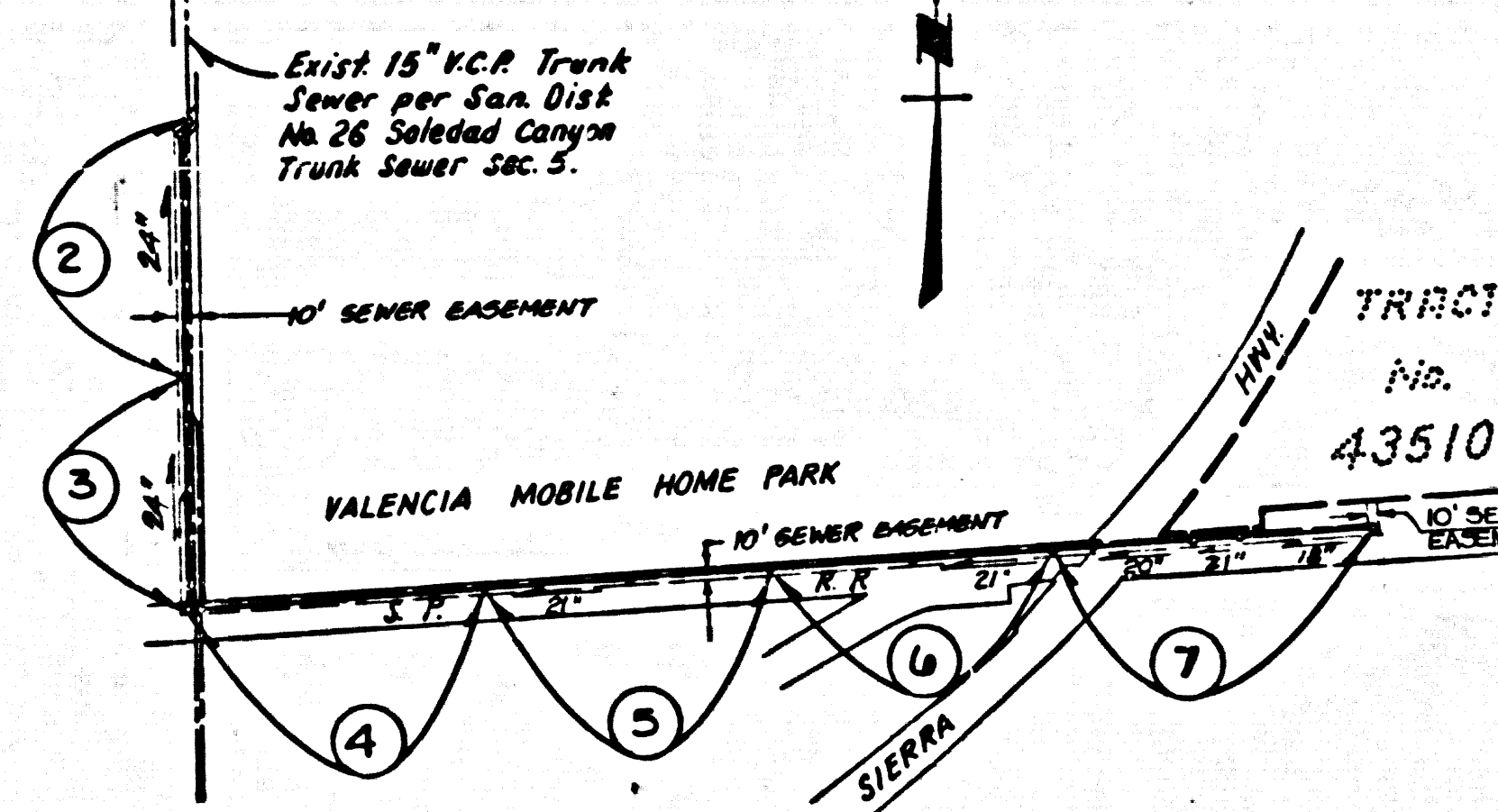
CONSTRUCTION NOTES (CONT.)

- 16. WYE BRANCHES ONLY MAY BE USED FOR CONNECTIONS TO MAIN LINE SEWER IN A.R.C.P. IS USED.
17. ALL JOINTS BETWEEN CAST IRON PIPE AND A.R.C.P. SHALL BE MADE WITH APPROVED FITTINGS.
18. FULL COMPLIANCE WITH PART IV OF THE SPECIAL PROVISIONS IS REQUIRED FOR THE INSTALLATION OF A.R.C.P. EXCEPT FOR THE A.R.C.P. SOLID WALL LATERALS...

REVISION NO. 1 2-26-68. PG. 1 INDEX MAP CHANGE PIPE SIZE FROM 21" TO 24" STA. 140+00 TO 141+25.00 CHANGE PIPE SIZE FROM 21" TO 24" PG. 4 STA. 141+25 TO 141+59.22 CHANGE GRADE OF SEWER PIPE FROM 6.44% TO 6.76% CHANGE PIPE SIZE FROM 21" TO 24"

B.M. CL 939 ELEV. 1430.205 FROM TAG & CB @ 40 COR OR #53-425 (IN BARREL) OVER SANTA CLARA RIVER 10 FT. E/O G/L SIERRA HWY. & 0.3 MI. S/O SOLEDAD ON RD. NEWHALL QUAD. 19.78

NOTE: NUMBERS IN CIRCLES INDICATE PAGE NUMBERS



REVISION NO. 3 5/18/67 PG. 1 INDEX MAP CHANGE PIPE IN PORTION OF 7' TO 31" PG. 6 REVISE BLK. AT STA. 35+52.00 PG. 7 REVISE LENGTH OF 48" CASING. REVISE HORIZ. AND VERT. ALIGNMENT STA. 35+50.00 TO STA. 40+46.85; DECREASED LENGTH BY 20' D.I.P. INCREASED LENGTH OF R.C.P. AND CHANGED SIZE FROM 18" TO 21".

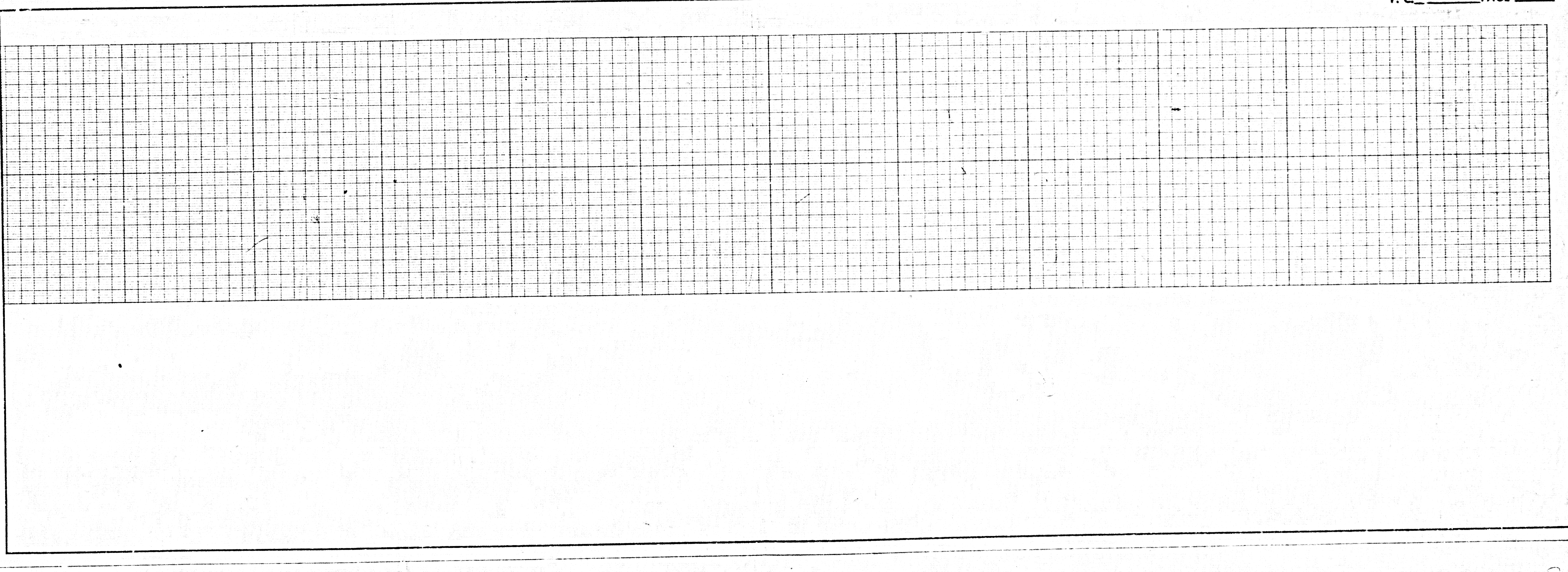
INDEX MAP OFF SITE SEWER TRACT NO 43510 PC NO 10485 Scale: 1"=600'

REVISION NO. 2 4/11/67 PG. 1 INDEX MAP CHANGE PIPE SIZE IN REACHES 18" TO 30" FROM 18" TO 30" PG. 3 REVISED BL. @ M.H. STA. 14+71.25 TO SHOW DROP ACROSS M.H. PG. 4 46 STA. 14+71.25 TO 14+99.22 - 26" TO 18" @ 3.36% TO 0.60% STA. 14+99.22 TO 14+100.00 - 18" TO 18" @ 0.60% TO 0.64% STA. 18+00.00 TO 21+00.00 - 18" TO 18" @ 0.60% TO 0.84% STA. 21+00.00 TO 25+00.00 - 18" TO 18" @ 0.60% TO 0.84% STA. 25+00.00 TO 28+00.00 - 18" TO 18" @ 0.60% TO 0.75% STA. 28+00.00 TO 30+00.00 - 18" TO 18" @ 0.60% TO 0.75% STA. 30+00.00 TO 30+50.00 - 18" TO 18" @ 0.60% TO 0.91% STA. 30+50.00 TO 30+59.22 - 18" TO 18" @ 0.60% TO 0.72%

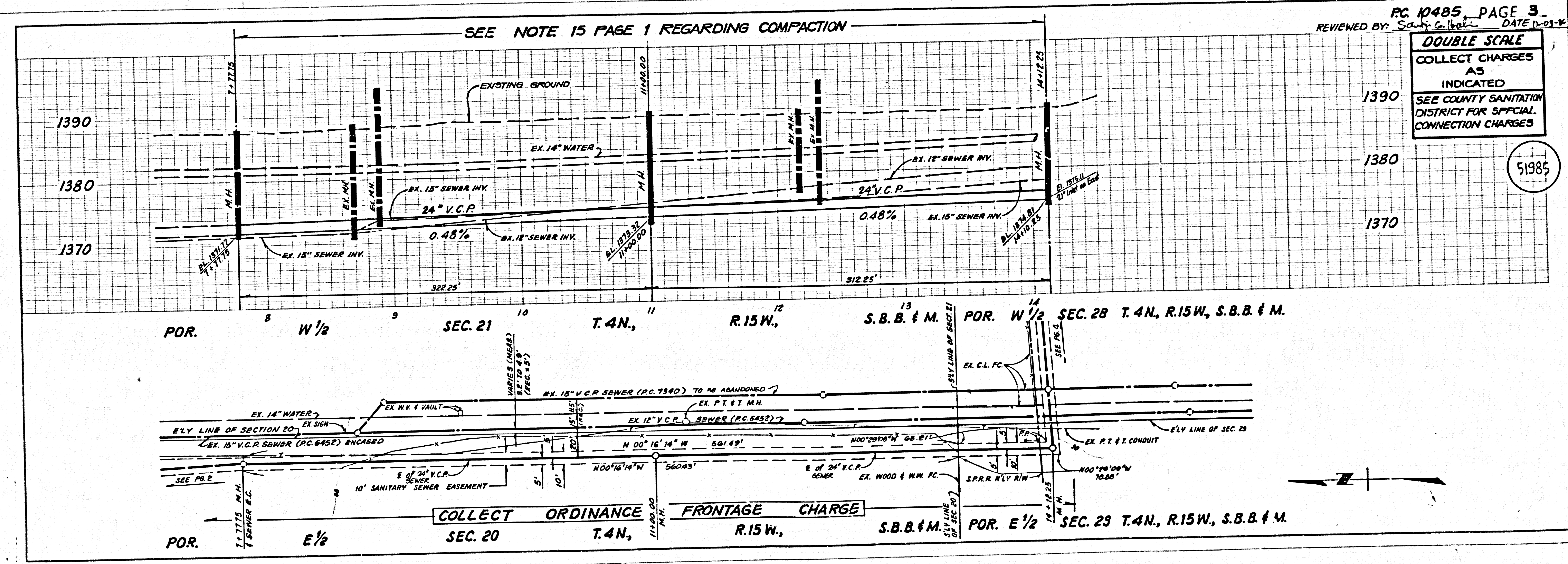
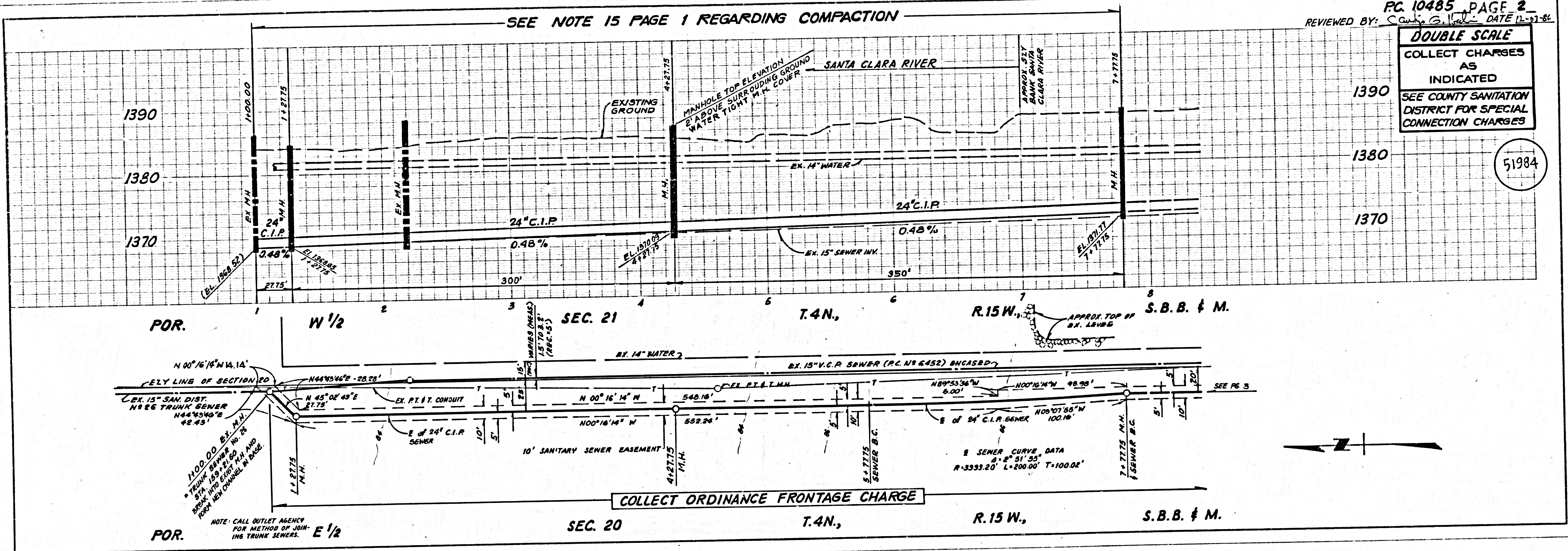
NO CONNECTION FOR THE DISPOSAL OF INDUSTRIAL WASTES SHALL BE MADE TO SEWERS SHOWN ON THESE DRAWINGS UNTIL A PERMIT FOR INDUSTRIAL WASTEWATER DISCHARGE HAS BEEN ISSUED BY THE SANITATION DISTRICTS FOR SAID CONNECTION. BEFORE BREAKING INTO OR CONSTRUCTION ON A COUNTY SANITATION DISTRICT SEWER AND PRIOR TO FINAL ACCEPTANCE OF THE PROJECT, SANITATION DISTRICT INSPECTOR SHALL BE NOTIFIED BY PHONE (818) 962-8605 SO THAT REQUIRED INSPECTION CAN BE MADE.

Table listing standard plans used in the project, including 'STANDARD SPECIFICATIONS FOR PUBLIC WORKS CONSTRUCTION' and 'MINIMUM PUBLIC SAFETY REQUIREMENTS'.

COUNTY OF LOS ANGELES, CALIFORNIA THOMAS A. TIEMANSON, DIRECTOR OF PUBLIC WORKS CHARLES W. CARR, CHIEF ENGINEER APPROVED: Carl H. Blum 12/13/66 APPROVED: Charles W. Carr 12/13/66



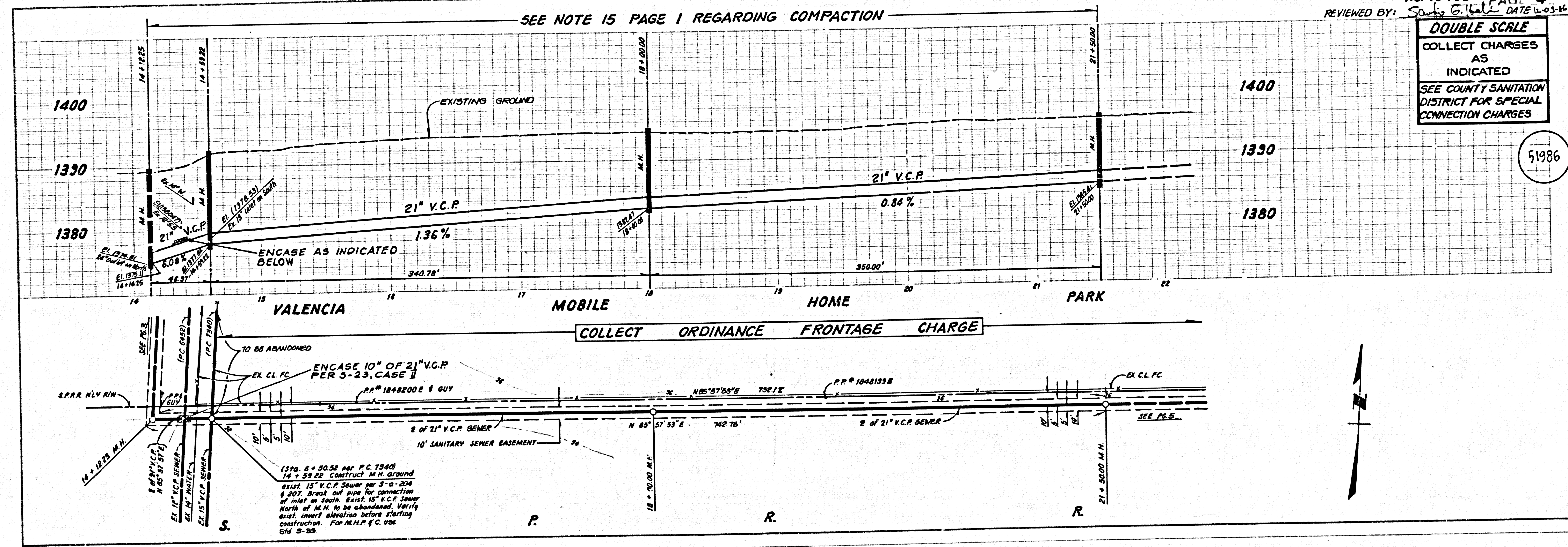
28401 09 01264 ON TRACT FOR SEWER STG 770



28401 29 0124 .01 TCAST 907 9EWES 2112 710

PC 10485 PAGE 4
REVIEWED BY: *Scott G. Baker* DATE 11-03-14

DOUBLE SCALE
COLLECT CHARGES AS INDICATED
SEE COUNTY SANITATION DISTRICT FOR SPECIAL CONNECTION CHARGES

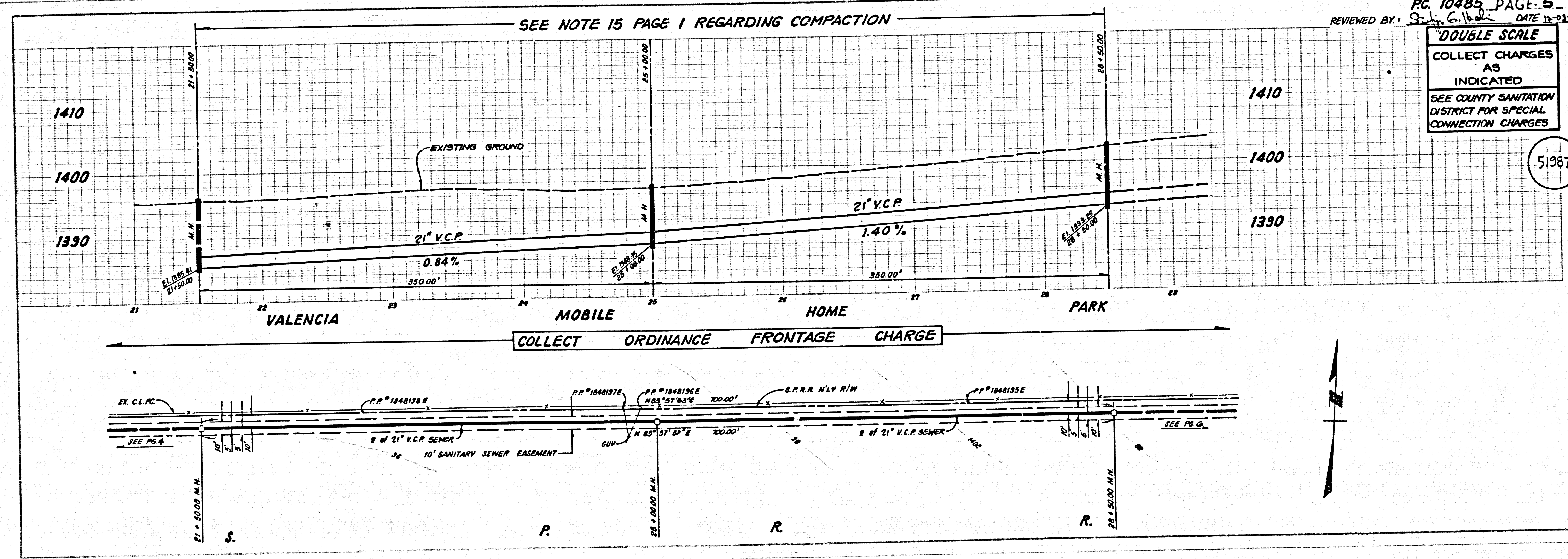


51986

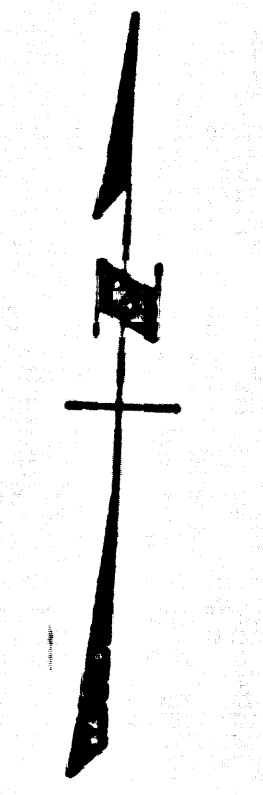


PC 10485 PAGE 5
REVIEWED BY: *Scott G. Baker* DATE 11-03-14

DOUBLE SCALE
COLLECT CHARGES AS INDICATED
SEE COUNTY SANITATION DISTRICT FOR SPECIAL CONNECTION CHARGES



51987

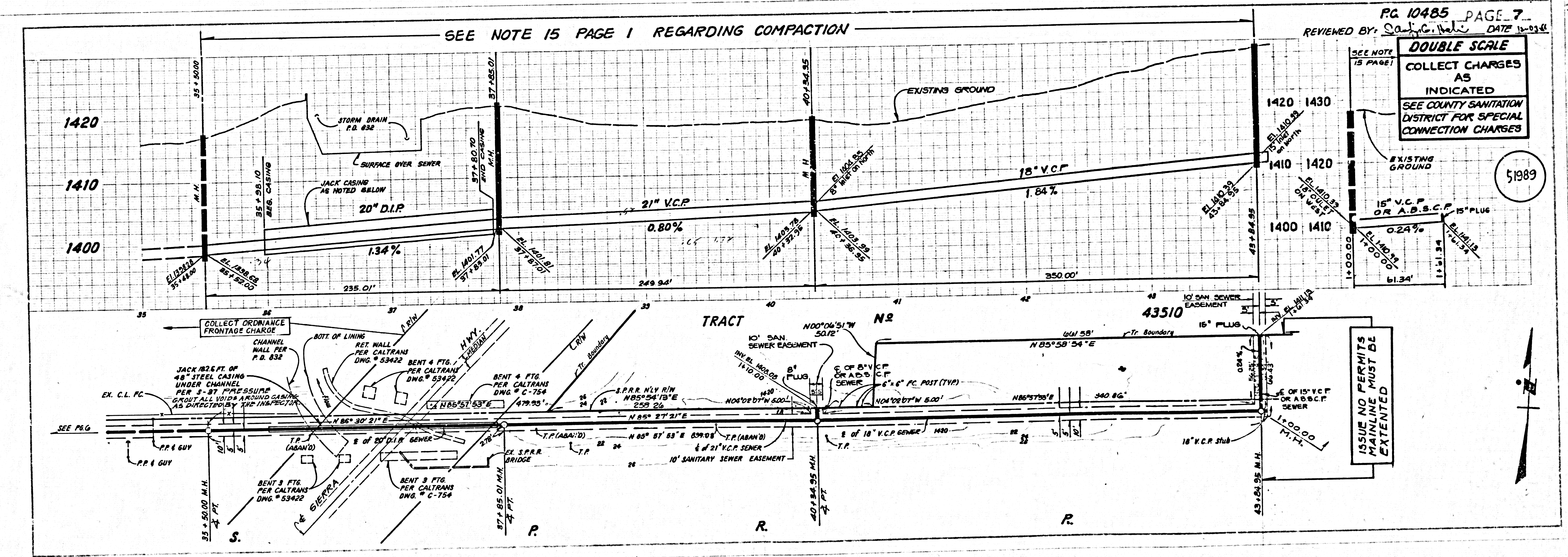
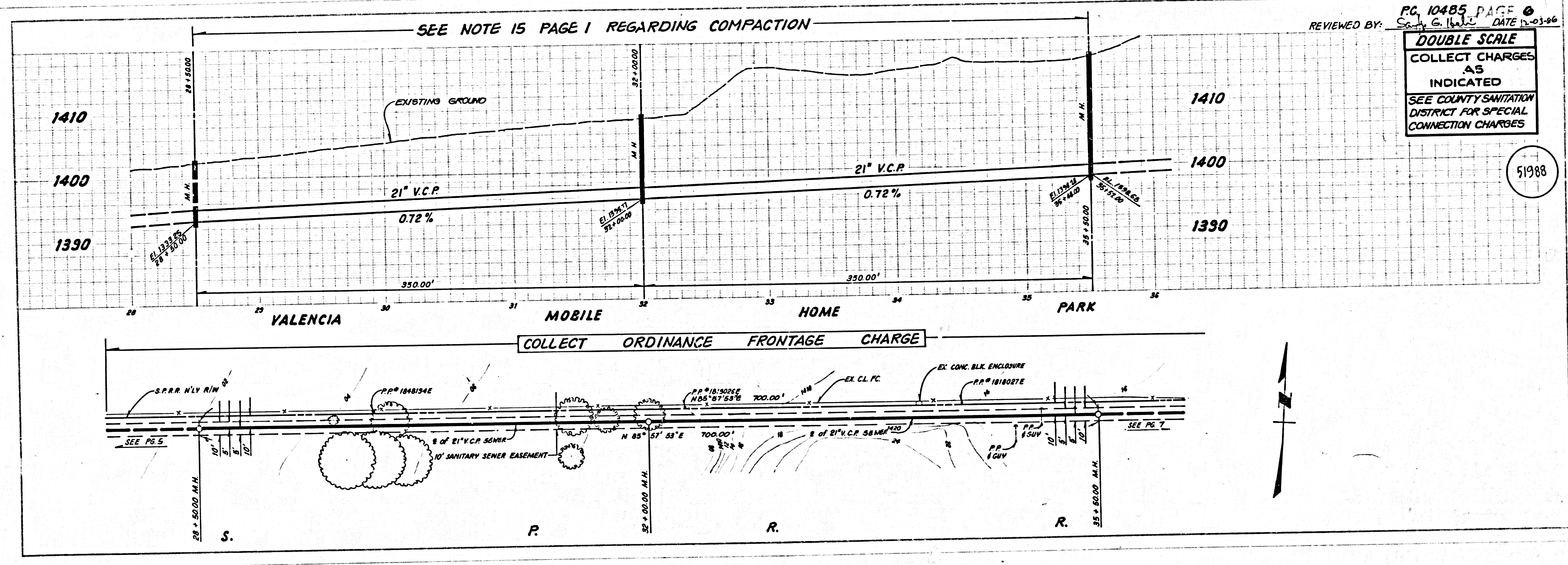


2840139 01234 ON TRACT 907 SEWER 312 770

PC 10485

M.S.

M.S.



28401 29 01224 001 TCAST 909 R2W2S 3T12 E70