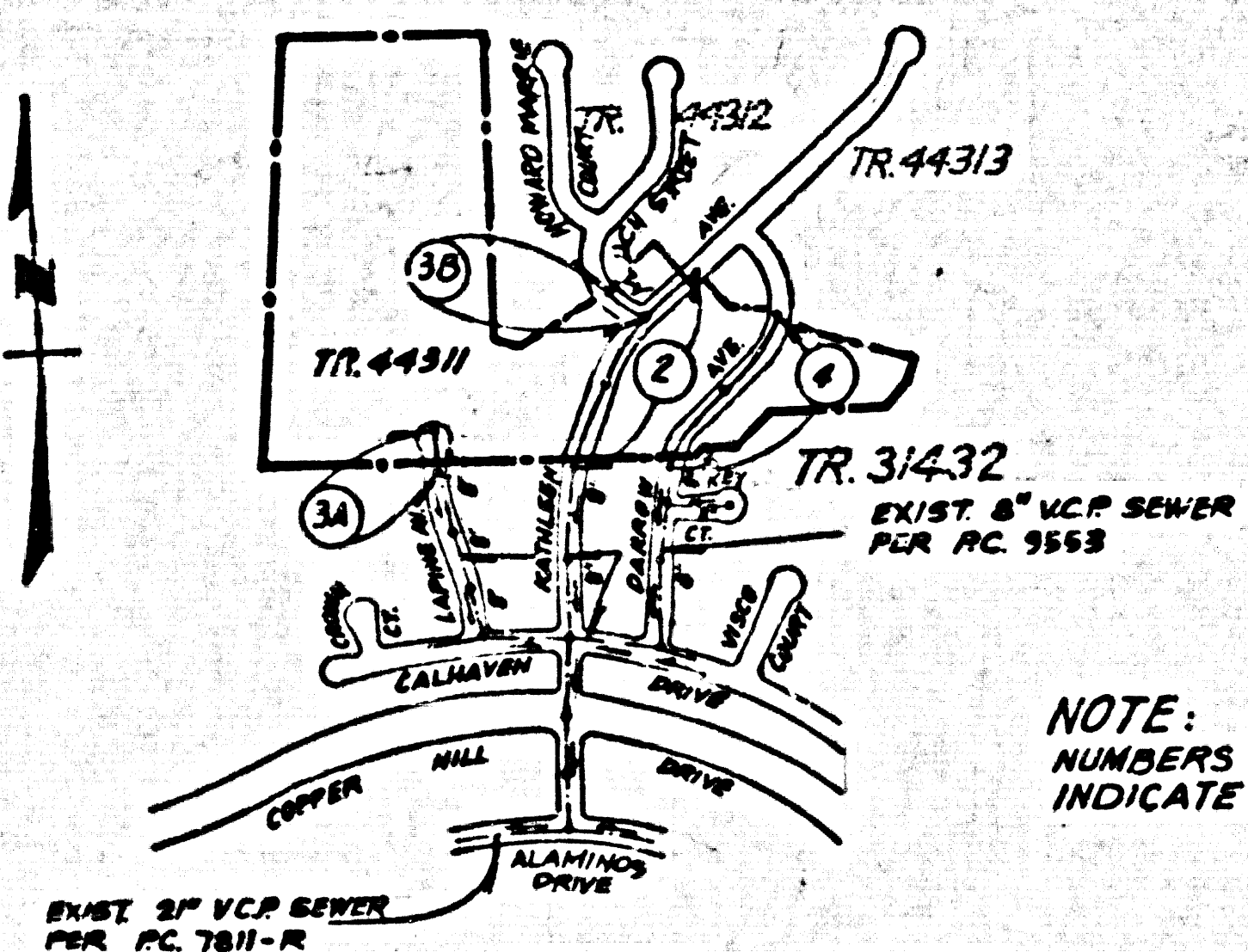


B.M. CL 5084 ELEV. 1389.182
 RDBM TAG IN NLY END C.B. 21FT WLY C/L
 BOUQUET ON RD 4' 45FT 3/0 MOB AVE
 NEWHALL QUAD. 19 83

DOUBLE SCALE

CONSTRUCTION NOTES: (CONT)

16. VIVE BRANCHES ONLY MAY BE USED FOR CONNECTIONS TO MAIN LINE SEWER IF A.B.C.C.P. IS USED.
17. ALL JOINTS BETWEEN CAST IRON PIPE AND A.B.C.C.P. SHALL BE MADE WITH APPROVED FITTINGS.
18. FULL COMPLIANCE WITH PART IX OF THE SPECIAL PROVISIONS IS REQUIRED FOR THE INSTALLATION OF A.B.C. COMPOSITE PIPE AND CLAMPS ARE REQUIRED FOR THE CONNECTION OF A.B.C. COMPOSITE PIPE TO MANHOLE STRUCTURES.
19. A.B.C. SOLID WALL PIPE MUST BE USED FOR VIVE AND HOUSE LATERAL CONNECTIONS TO A.B.C. COMPOSITE MANHOLE SEWER PIPE.
20. 8" SPANNE DEFLECTION COUPLERS SHOULD BE USED TO ACCOMPLISH RADIIUS OF CONNECTIONS LESS THAN 800'.
21. A.B.C. COMPOSITE PIPE SHALL BE BEDDED IN CONFORMANCE WITH THE TABLE IN SECTION B-21 OF PART IX OF SPECIAL PROVISIONS.



INDEX MAP
TRACT NO. 44311
 P.C. NO. 10487
 SCALE: 1" = 600'

NOTE:
 NUMBERS IN CIRCLES
 INDICATE PAGE NUMBERS

NO CONNECTION FOR THE DISPOSAL OF INDUSTRIAL WASTES SHALL BE MADE TO SEWERS SHOWN ON THESE DRAWINGS UNTIL A PERMIT FOR INDUSTRIAL WASTEWATER DISCHARGE HAS BEEN ISSUED BY THE SANITATION DISTRICTS FOR SAID CONNECTION.

BEFORE BREAKING INTO OR CONSTRUCTION ON A COUNTY SANITATION DISTRICT SEWER AND PRIOR TO FINAL ACCEPTANCE OF THE PROJECT, SANITATION DISTRICT INSPECTOR SHALL BE NOTIFIED BY PHONE (818) 962-8605 SO THAT REQUIRED INSPECTION CAN BE MADE.

GENERAL NOTES:

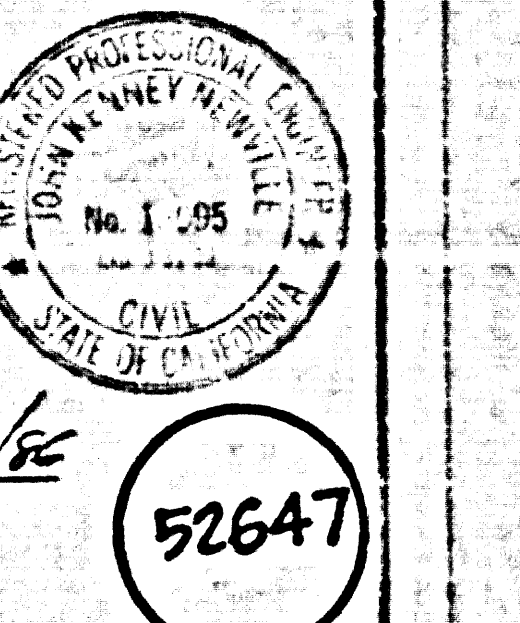
1. ELEVATIONS ARE IN FEET ABOVE U.S.C. & G.S. MEAN DATUM OF 1929.
2. NO REVISIONS SHALL BE MADE IN THESE PLANS WITHOUT THE APPROVAL OF THE DIRECTOR OF PUBLIC WORKS.
3. NO REPRESENTATIVE OF THE OWNER OF PUBLIC WORKS SHALL SURVEY OR LAY OUT ANY PORTION OF THIS PROJECT.
4. GRADES TO WHICH THIS IMPROVEMENT IS TO BE CONSTRUCTED ARE SHOWN ON PLANS AND PROFILES. GRADE POINTS FOR POINT OF CURVE, CENTER LINE OF STREET, OR CENTER LINE OF ALLEY ARE SHOWN ON PROFILES AT ALL POINTS BETWEEN DESIGNATED POINTS THE GRADE SHALL BE ESTABLISHED SO AS TO CONFORM TO A STRAIGHT LINE UNLESS OTHERWISE INDICATED.
5. THE PRIVATE ENGINEER SHALL FURNISH THE DATE OF PUBLIC WORKS WITH BIDDING SHEETS AND SPECIFICATIONS FOR ALL HOUSE LATERALS AND "TIE" BEACHES AND SHALL PROVIDE STAKES FOR THE MAIN LINE SEWER AND HOUSE LATERALS AT ALL POINTS MARKED. ALL HOUSE LATERALS SHALL BE CONSTRUCTED IN A STRAIGHT ALIGNMENT AT RIGHT ANGLES FROM THE MAIN LINE SEWER EXCEPT AS SHOWN ON THE PLANS. HOUSE LATERALS SHALL NOT HAVE CHANGES OF GRADE OR SIZE UNLESS OTHERWISE INDICATED BY THE PRIVATE ENGINEER.
6. THE PRIVATE ENGINEER SHALL FURNISH THE HOUSE LATERAL DEPTH AT THE PROPERTY LINE AND THE TOP OF CURB ELEVATION FOR EACH HOUSE LATERAL ON THE GRADE SHEET.
7. BEFORE WORK CAN BE STARTED THE CONTRACTOR MUST OBTAIN A PERMIT TO EXCAVATE IN COUNTY STREETS FROM THE COUNTY ENGINEER'S OFFICE OF PUBLIC WORKS, PERMIT OFFICE NO. 6, AND PAY A FEE TO THE DIRECTOR OF PUBLIC WORKS, 2250 ALCAZAR ST., LOS ANGELES, CALIF. TO COVER THE COST OF CONSTRUCTION INSPECTION AND RECORD PLANS.
8. IF WORK IS TO BE DONE ON A STATE HIGHWAY A PERMIT MUST BE OBTAINED FROM THE STATE OF CALIFORNIA, DIVISION OF HIGHWAYS, 120 SOUTH SPRING STREET, LOS ANGELES, CALIFORNIA.
9. APPROVAL OF THIS PLAN BY THE COUNTY OF LOS ANGELES DOES NOT CONSTITUTE A REPRESENTATION AS TO THE EXISTENCE OR NON-EXISTENCE OF ANY UNDERGROUND UTILITY PIPE, OR STRUCTURE WITHIN THE LIMITS OF THE PROJECT. THIS NOTE APPLIES TO ALL PAGES.
10. REFER TO SECTION 716.41 OF THE STANDARD SPECIFICATIONS REGARDING SAFETY SIGNS.
11. PRIOR TO THE ISSUANCE OF THE PROPOSED SEWER CONSTRUCTION PERMIT THE CONTRACTOR SHALL OBTAIN AND FILE WITH THE DEPT. OF PUBLIC WORKS, OFFICE OF A PERMIT TO EXCAVATE IN COUNTY STREETS FROM THE COUNTY ENGINEER AT THE DEPT. OF PUBLIC WORKS, 2250 ALCAZAR ST., LOS ANGELES, CALIF. A PERMIT TO EXCAVATE IN COUNTY STREETS FROM THE COUNTY ENGINEER AT THE DEPT. OF PUBLIC WORKS, 2250 ALCAZAR ST., LOS ANGELES, CALIF. A PERMIT TO EXCAVATE IN COUNTY STREETS FROM THE COUNTY ENGINEER AT THE DEPT. OF PUBLIC WORKS, 2250 ALCAZAR ST., LOS ANGELES, CALIF. A PERMIT TO EXCAVATE IN COUNTY STREETS FROM THE COUNTY ENGINEER AT THE DEPT. OF PUBLIC WORKS, 2250 ALCAZAR ST., LOS ANGELES, CALIF.

CONSTRUCTION NOTES:

1. WORK SHALL BE CONSTRUCTED ACCORDING TO THE STANDARD SPECIFICATIONS FOR PUBLIC WORKS CONSTRUCTION, 1955 EDITION WITH PERMITS, COMMENTS & DEPT. OF PUBLIC WORKS SPECIAL PROVISIONS FOR THE CONSTRUCTION OF PUBLIC WORKS, REVISED SEPT. 24, 1976, AND SHALL BE PROTECTED ONLY IN THE PRESENCE OF THE DIRECTOR OF PUBLIC WORKS.
2. THE CONTRACTOR SHALL NOTIFY THE CONSTRUCTION DIVISION BY TELEPHONE 341-8500 AT LEAST TWENTY-FOUR HOURS BEFORE STARTING ANY WORK UNDER THIS CONTRACT.
3. HOUSE LATERALS TO BE CONSTRUCTED WITH INVERTS AT PROPERTY LINE 8 FEET BELOW CURB GRADE EXCEPT AS NOTED.
4. VIVE OR TIE BRANCHES MAY BE USED FOR CONNECTIONS TO MAINLINE SEWERS EXCEPT AS NOTED.
5. ALL STRUCTURES SHALL BE EITHER BRICK SEWER MANHOLES PER S-3 OR PRE-CAST CONCRETE MANHOLES PER S-34 EXCEPT AS NOTED.
6. PROVIDE STAKES ON THE PROPERTY LINE OR PROPERTY LINES PRODUCED AT RIGHT ANGLES TO THE SEWER LINE AT THE CENTER LINE OF EACH MANHOLE.
7. MANHOLE TOPS IN UNIMPROVED RIGHTS OF WAY TO BE SIX INCHES ABOVE FINISHED GRADE.
8. WITHEED CLAY PIPE JOINTS SHALL BE TYPE "1" OR "2" PER STANDARD SPECIFICATIONS SECTION 308-2.
9. IF A COVER HOLE IS WITHIN THREE FEET OF THE SEWER, THE SEWER SHALL BE ENCASED PER S-28 CASE II, TWO FEET ON EACH SIDE FROM THE POINT OF INTERFERENCE.
10. IF DURING THE COURSE OF CONSTRUCTION IT IS DETERMINED THAT THERE IS LESS THAN FOUR FEET OF COVER OVER THE TOP OF A MAIN LINE OR HOUSE LATERAL SEWER WHICH IS NOT INDICATED ON THE PLANS, THE PIPE SHALL BE ENCASED PER S-28 CASE II UNLESS OTHERWISE APPROVED BY THE ENGINEER OF PUBLIC WORKS.
11. ALL JOINTS BETWEEN CAST IRON PIPE AND WITHEED CLAY PIPE SHALL BE MADE WITH A RUBBER SLEEVE JOINT, TYPE "1" OR "2", (WITH BUSHINGS IF NECESSARY) PER STANDARD SPECIFICATIONS SECTION 308-2.
12. SEWERS TO BE TESTED FOR LEAKAGE PER SECTION 308-1.4 OF THE STANDARD SPECIFICATIONS AND SPECIAL PROVISIONS.
13. REINFORCE ALL TRENCHES WITHIN PAVED AREAS TO MEET L.A. COUNTY PUBLIC WORKS OR CALIFORNIA STATE HIGHWAY REQUIREMENTS IN ACCORDANCE WITH PERMITS.
14. FULL COMPLIANCE WITH SECTION 308-1.6 OF THE STANDARD SPECIFICATIONS WILL BE REQUIRED FOR BACKFILL IN STREETS. CERTIFICATION OF BACKFILL COMPACTION AND SAND EQUIVALENTS BY A QUALIFIED, REGISTERED TESTING LABORATORY SHALL BE PROVIDED BY THE PERMITTEE PRIOR TO THE RESUME OF PUBLIC ACCEPTANCE.
15. SPECIAL BACKFILL BY EASEMENT CONSTRUCTION (A) BACKFILL TRENCH AND REPLACE OTHER EARTH SO AS TO ACHIEVE THE NATURAL OR FINISHED GRADES AND SLOPES SHOWN ON THE GRADING PLAN APPROVED FOR THIS DEVELOPMENT BY THE LAND DEVELOPMENT DIVISION. (B) ALL BACKFILL AND EARTH REPLACED SHALL BE COMPACTED TO A MINIMUM OF 90% OF MAXIMUM DENSITY PER A.S.T.M. METHOD OF TEST ONE BY AS NOTED. ACCEPTANCE CERTIFICATION OF SUCH COMPACTION SHALL BE SUBMITTED TO THE CONSTRUCTION DIVISION, PUBLIC WORKS OFFICE.

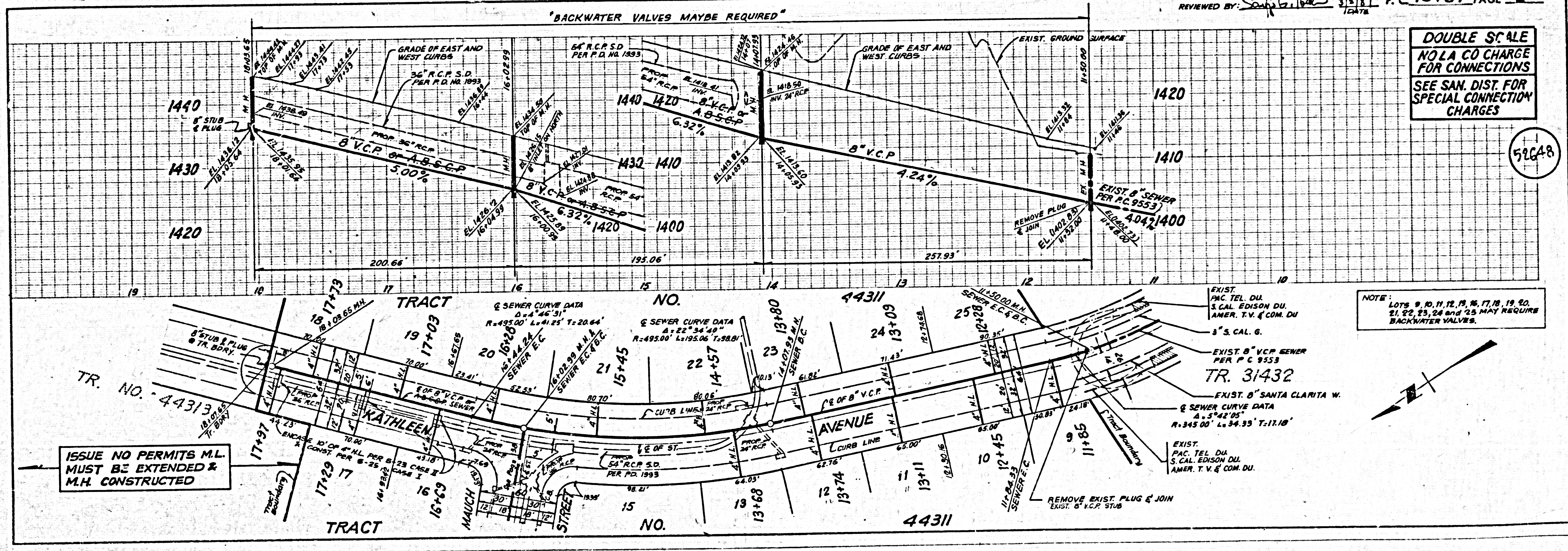
TRACT NO. 44311
PRIVATE CONTRACT NO. 10487
 A-94
 W.S. 62 B-1
 2 SHEETS, 4 PAGE.

SCALE: VERT. 1" = 4'
 HORIZ. 1" = 40'
 PREPARED IN THE OFFICES OF
ENGINEERING SERVICE CORPORATION
 5117 BRISTOL PARKWAY, LOS ANGELES, CALIF. 90044
 TELEPHONE: (213) 741-1100
 BY: *J. H. ...* DATE: 1/29/87
 REG. C. E. NO. 13035



THE FOLLOWING LATEST REVISION STANDARD PLANS ON FILE IN THE OFFICE OF THE COUNTY ENGINEER SHALL APPLY TO THE CONSTRUCTION OF THIS PROJECT:	
UCBMS	1-1
MINIMUM PUBLIC SAFETY REQUIREMENTS	1-2
BRICK MANHOLES	1-3
STANDARD MANHOLE TOP	1-17
BEDDING FOR SEWER PIPE	1-18
CHANGING AND DISCONTINUITY WITH THE SUPPORT	1-20
ALLOWABLE TRENCH WIDTH	1-23
LOCKING MANHOLE FRAME AND COVER	1-25
NON-SUPPORTIVE PRECAST CONCRETE MANHOLE	1-26
SPECIAL HOUSE LATERALS	1-28

COUNTY OF LOS ANGELES, CALIFORNIA
 THOMAS A. TIDEMANSON, DIRECTOR OF PUBLIC WORKS
 APPROVED: *Carl ...* 3/4/87
 CHECKED: *...* 3/12/87
 CHAS. W. CARRY, CHIEF ENGINEER
 APPROVED: *...* 4/15/87
 SANTA CLARITA VALLEY, BLDG. DIST. 8-2

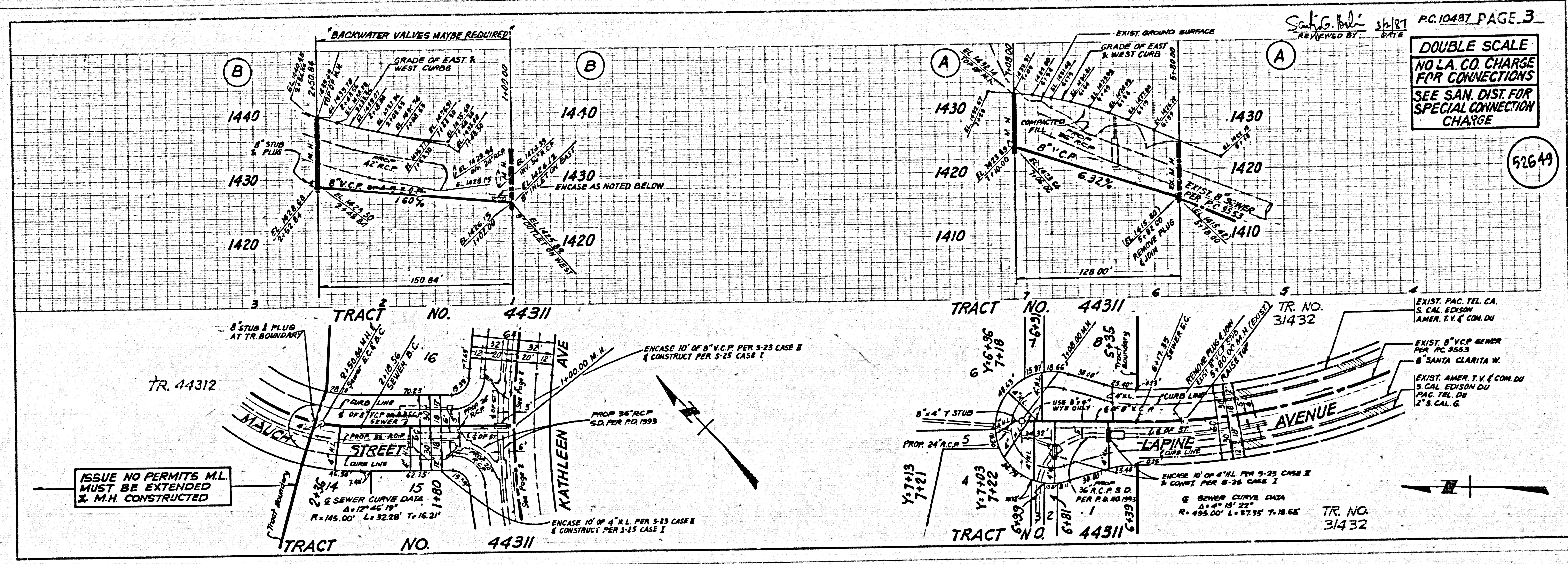


DOUBLE SCALE
 NO L.A. CO CHARGE FOR CONNECTIONS
 SEE SAN. DIST. FOR SPECIAL CONNECTION CHARGES

NOTE: LOTS 9, 10, 11, 12, 13, 16, 17, 18, 19, 20, 21, 22, 23, 24 and 25 MAY REQUIRE BACKWATER VALVES.

ISSUE NO PERMITS M.L. MUST BE EXTENDED & M.H. CONSTRUCTED

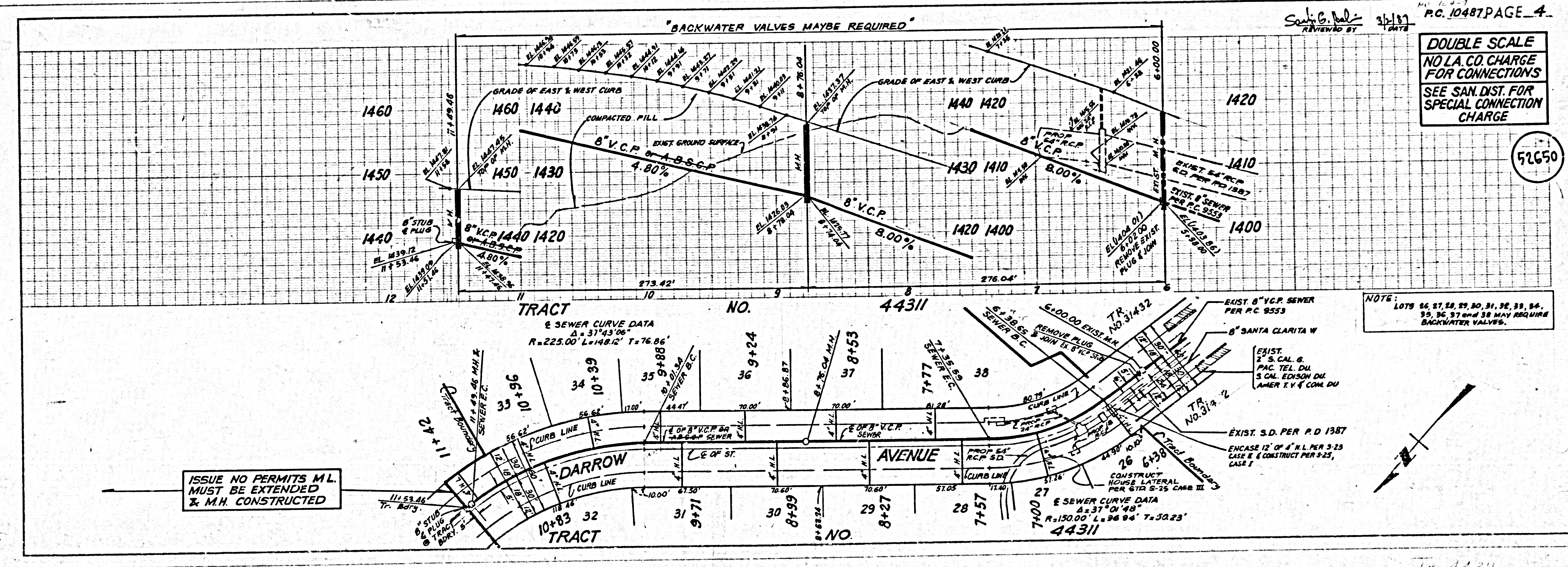
EXIST. 8" V.C.P. SEWER PER P.C. 9553
 EXIST. 8" SANTA CLARITA W. SEWER CURVE DATA
 R=345.00' L=34.35' T=17.18'
 EXIST. PAC. TEL. DU. S. CAL. EDISON DU. AMER. T.V. & COM. DU. 5" S. CAL. G.



PC. 10487 PAGE 3
DOUBLE SCALE
 NO L.A. CO. CHARGE
 FOR CONNECTIONS
 SEE SAN. DIST. FOR
 SPECIAL CONNECTION
 CHARGE

52649

ISSUE NO PERMITS M.L.
 MUST BE EXTENDED
 & M.H. CONSTRUCTED

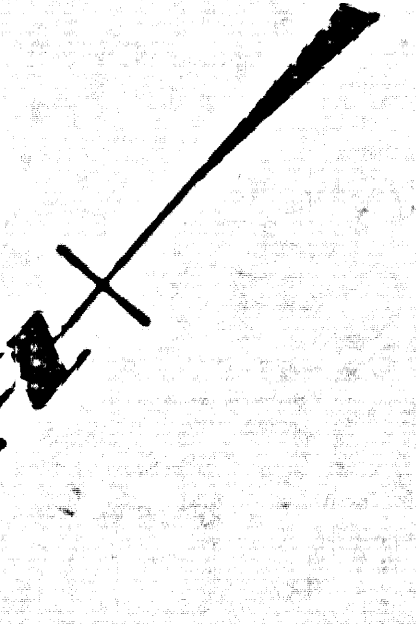


PC. 10487 PAGE 4
DOUBLE SCALE
 NO L.A. CO. CHARGE
 FOR CONNECTIONS
 SEE SAN. DIST. FOR
 SPECIAL CONNECTION
 CHARGE

52650

ISSUE NO PERMITS M.L.
 MUST BE EXTENDED
 & M.H. CONSTRUCTED

NOTE: LOTS 26, 27, 28, 29, 30, 31, 32, 33, 34,
 35, 36, 37 and 38 MAY REQUIRE
 BACKWATER VALVES.



TR. 44311