

SANITARY SEWERS

TO BE CONSTRUCTED IN

TRACT No. 44362

PRIVATE CONTRACT NO. 10491

C-217-8

W.S. 61

7 SHEETS, 14 PAGES

52535

SCALE: HORIZONTAL 1" = 40' VERTICAL 1" = 10' JUNE, 1986 PREPARED IN THE OFFICES OF B & E ENGINEERS 825 COLORADO BLVD. SUITE 222, LOS ANGELES, CA. 90041 BY: [Signature] REG. C.E. No. 16531 EXP. 6-30-89 STATE OF CALIFORNIA

THE FOLLOWING LATEST REVISED STANDARD SPECIFICATIONS IN THE OFFICE OF THE COUNTY DEPT. OF PUBLIC WORKS SHALL APPLY TO THE CONSTRUCTION OF THIS PROJECT.

Table of specifications including: MINIMUM PUBLIC SAFETY REQUIREMENTS, BRICK SEWER MANHOLE, STANDARD MANHOLE STEP, CHAINING AND ENCASING, WYE OR TE BRANCH, ALLOWABLE TRENCH WIDTHS, LOCATING MANHOLE FRAMES AND COVERS, NON-REINFORCED PORTLAND CONCRETE SEWER MANHOLES, RECTANGULAR MANHOLE FRAMES, RECTANGULAR MANHOLE FRAMES (CONC.), PORTLAND CONCRETE SEWER MANHOLES, ANCHOR BLOCKS, CATCH BASIN, SPECIAL INVERSE LATERAL CONSTRUCTION.

COUNTY OF LOS ANGELES, CALIFORNIA THOMAS A. TIDEMANSON, DIR. OF PUBLIC WORKS LAS VITTOFFS MUNICIPAL WATER DISTRICT K.W. STOKES, CHIEF ENGINEER

APPROVED: [Signature] 11/14/86 APPROVED: [Signature] 11-11-86 DATE DATE

CHECKED: [Signature] 11-18-86 DATE

NO. & R. NO. 17536 CALABASAS BLDG. DIST. 2/1

GENERAL NOTES:

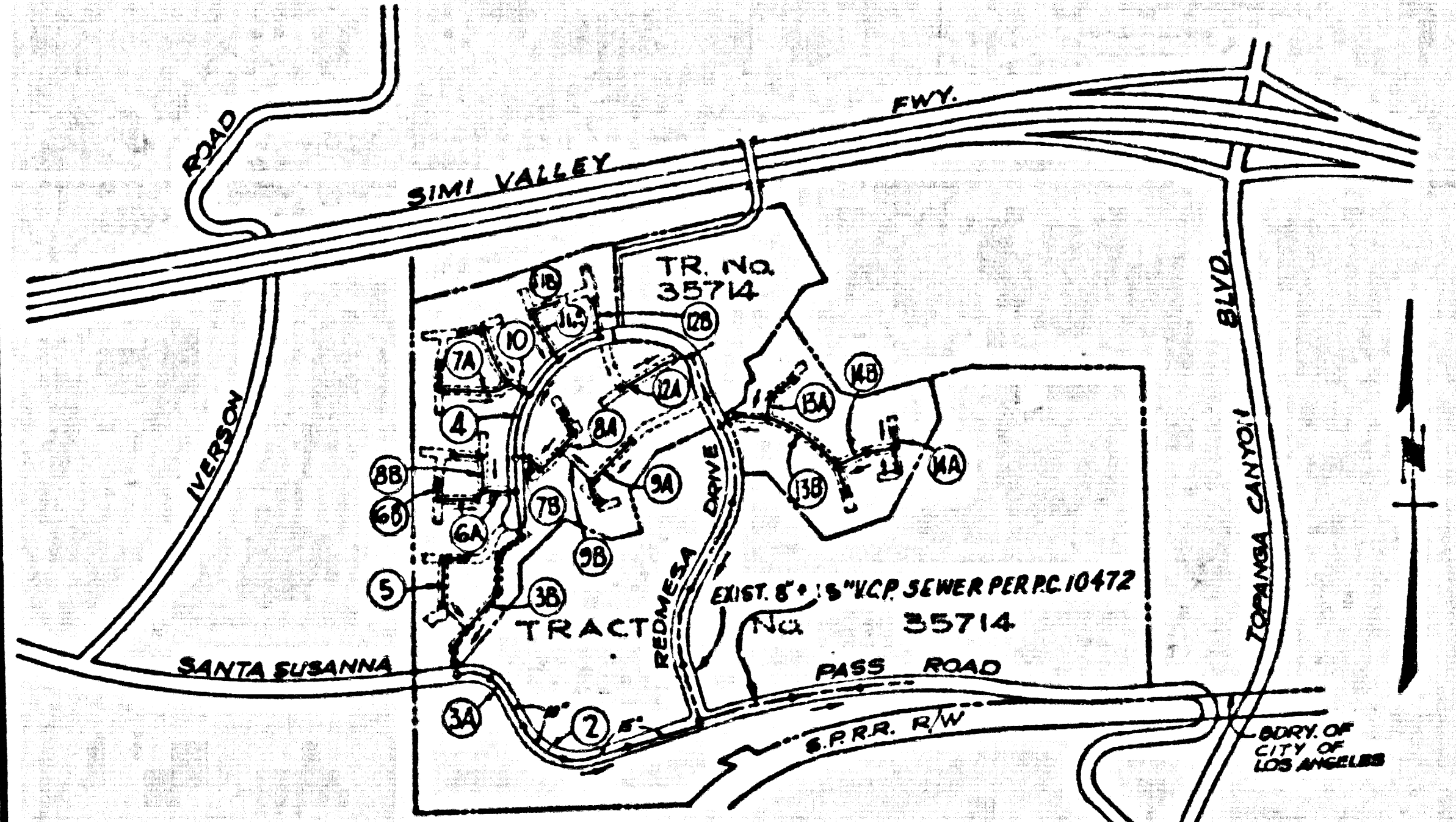
- 1. ELEVATIONS ARE IN FEET ABOVE U.S.C. & G.S. SEA LEVEL DATUM OF 1929.
2. NO REVISIONS SHALL BE MADE IN THESE PLANS WITHOUT THE APPROVAL OF THE DEPT. OF PUBLIC WORKS.
3. NO REPRESENTATIVE OF THE DEPT. OF PUBLIC WORKS WILL SURVEY OR LAY OUT ANY PORTION OF THE WORK.
4. GRADES TO WHICH THIS IMPROVEMENT IS TO BE CONSTRUCTED ARE SHOWN ON PLANS AND PROFILES GRADE POINTS FOR TOP OF CURBS, CENTER LINE OF STREETS, OR CENTER LINE OF ALLEYS ARE SHOWN BY CIRCLES OR PROFILES AT ALL POINTS BETWEEN DESIGNATED POINTS THE GRADE SHALL BE ESTABLISHED SO AS TO CONFORM TO A STRAIGHT LINE DRAWN BETWEEN SAID DESIGNATED POINTS.
5. THE PRIVATE ENGINEER SHALL FURNISH THE SURVEYING INSTRUMENTS WITH GRADE SHEETS AND STATIONING FOR ALL HOUSE LATERALS AND "T" BRANCHES AND SHALL PROVIDE STAKES FOR THEM AT THEIR PROPER LOCATIONS WITH STATIONING PLAINLY MARKED. ALL HOUSE LATERALS SHALL BE CONSTRUCTED IN A STRAIGHT ALIGNMENT AT RIGHT ANGLES FROM THE MAIN LINE SEWER EXCEPT AS SHOWN ON THE PLANS. HOUSE LATERALS FROM CHIMNEYS SHALL NOT HAVE AN ANGLE OF LESS THAN 45° WITH THE MAIN LINE SEWER. ANY CHANGE IN ALIGNMENT SHALL BE REQUESTED IN WRITING BY THE PRIVATE ENGINEER.
6. THE PRIVATE ENGINEER SHALL FURNISH THE HOUSE LATERAL DEPTH AT THE PROPERTY LINE BELOW THE TOP OF CURB ELEVATION FOR EACH HOUSE LATERAL ON THE GRADE SHEET.
7. BEFORE WORK CAN BE STARTED, THE CONTRACTOR MUST OBTAIN A PERMIT TO EXCAVATE IN COUNTY STREETS FROM THE L.A. COUNTY DEPT. OF PUBLIC WORKS, DISTRICT OFFICE NO. 3/1, AND PAY A FEE TO THE DIRECTOR OF PUBLIC WORKS, 1022 WENDENBURY, LOS ANGELES, CA, 90025 - \$15 PER DAY TO COVER THE COST OF CONSTRUCTION INSPECTION AND RECORD PLANS.
8. IF WORK IS TO BE DONE IN A STATE HIGHWAY A PERMIT MUST BE OBTAINED FROM THE STATE OF CALIFORNIA, DIVISION OF HIGHWAYS, 130 SOUTH SPRING STREET, LOS ANGELES, CALIFORNIA.
9. APPROVAL OF THIS PLAN BY THE COUNTY OF LOS ANGELES DOES NOT CONSTITUTE A REPRESENTATION AS TO THE ACCURACY OF THE LOCATION OF THE EXISTENCE OR NON-EXISTENCE OF ANY UNDERGROUND UTILITY PIPE, OR STRUCTURE WITHIN THE LIMITS OF THIS PROJECT. THIS NOTE APPLIES TO ALL PAGES.
10. REFER TO SECTION 7.16.1 OF THE STANDARD SPECIFICATIONS REGARDING SAFETY ORDERS.
11. PRIOR TO THE ISSUANCE OF THE REQUIRED SEWER CONSTRUCTION PERMIT THE CONTRACTOR SHALL OBTAIN AND FILE WITH THE DEPT. OF PUBLIC WORKS COPIES OF A PERMIT TO EXCAVATE IN COUNTY STREETS FROM THE DEPT. OF PUBLIC WORKS AND A CERTIFICATE OF LIABILITY INSURANCE FROM THE STATE OF CALIFORNIA, DIVISION OF INDUSTRIAL SAFETY AND A CERTIFICATE OF WORKERS COMPENSATION INSURANCE WITH THE DEPARTMENT OF PUBLIC WORKS, 800 S. PEBBLEDOME, ALHAMBRA, CALIF. 91808, \$5 FLOOR, NAMED AS THE CERTIFICATE HOLDER TO BE NOTIFIED 30 DAYS PRIOR TO CANCELLATION OF POLICY.

CONSTRUCTION NOTES:

- 1. WORK SHALL BE CONSTRUCTED ACCORDING TO THE STANDARD SPECIFICATIONS FOR PUBLIC WORKS CONSTRUCTION 1986 EDITION WITH THE SUPPLEMENT) AND COUNTY ENGINEER SPECIAL PROVISIONS FOR THE CONSTRUCTION OF SANITARY SEWERS DATED 3/27/1978.
2. THE CONTRACTOR SHALL NOTIFY THE CONSTRUCTION DIVISION BY TELEPHONE 226-4284 AT LEAST TWENTY-FOUR HOURS BEFORE STARTING ANY WORK UNDER THIS CONTRACT.
3. HOUSE LATERALS TO BE CONSTRUCTED WITH INVERTS AT PROPERTY LINE 8 FEET BELOW CURB GRADE EXCEPT AS NOTED.
4. WYE OR TE BRANCHES MAY BE USED FOR CONNECTIONS TO MAIN LINE SEWERS EXCEPT AS NOTED.
5. ALL STRUCTURES SHALL BE EITHER BRICK OR PORTLAND CONCRETE MANHOLES PER 5-26, EXCEPT AS NOTED.
6. PROVIDE STAKES ON THE PROPERTY LINE OR PROPERTY LINES PRODUCED AT RIGHT ANGLES TO THE SEWER LINE AT THE CENTER LINE OF EACH MANHOLE.
7. MANHOLE TOPS IN UNIMPROVED RIGHTS OF WAY TO BE 36 INCHES ABOVE FINISHED GRADE.
8. VITRIFIED CLAY PIPE JOINTS SHALL BE TYPE "D" OR "B" PER STANDARD SPECIFICATIONS SECTION 208-2.
9. IF A POWER POLE IS WITHIN THREE FEET OF THE SEWER, THE SEWER SHALL BE ENCASED, PER 5-25, CASE 8, TWO FEET ON EACH SIDE FROM THE POINT OF INTERFERENCE.
10. IF DURING THE COURSE OF CONSTRUCTION IT IS DETERMINED THAT THERE IS LESS THAN FOUR FEET OF COVER OVER THE TOP OF A MAIN LINE OR HOUSE LATERAL SEWER WHICH IS NOT INDICATED ON THE PLANS, THE PIPE SHALL BE ENCASED PER 5-25, CASE 8 UNLESS OTHERWISE APPROVED BY THE DIRECTOR OF PUBLIC WORKS.
11. ALL JOINTS BETWEEN CAST IRON PIPE AND VITRIFIED CLAY PIPE SHALL BE MADE WITH A RUBBER SLEEVE JOINT, TYPE "C" OR "D", (WITH BUSHING IF NECESSARY) PER STANDARD SPECIFICATIONS, SECTION 208-3.
12. SEWERS TO BE TESTED FOR LEAKAGE PER SECTION 208-1.4 OF THE STANDARD SPECIFICATIONS AND SPECIAL PROVISIONS.
13. RESURFACE ALL TRENCHES WITHIN PAVED AREAS TO MEET L.A. COUNTY ROAD DEPT. OR CALIFORNIA STATE HIGHWAY REQUIREMENTS IN ACCORDANCE WITH PERMITS.
14. FULL COMPLIANCE WITH SECTION 208-1.3 OF THE STANDARD SPEC. WILL BE REQUIRED FOR BACKFILL IN STREETS. CERTIFICATION OF BACKFILL COMPACTION AND SAND EQUIVALENTS BY A QUALIFIED, REGISTERED TESTING LABORATORY SHALL BE PROVIDED BY THE PERMITTEE PRIOR TO THE ISSUANCE OF A CERTIFICATE OF PARTIAL ACCEPTANCE.
15. SPECIAL BACKFILL IN EASEMENT CONSTRUCTION: (A) BACKFILL TRENCH AND REPLACE OTHER EARTH SO AS TO ACHIEVE THE NATURAL OR FINISHED GRADES AND SLOPES SHOWN ON THE GRADING PLAN APPROVED FOR THE DEVELOPMENT BY THE BUILDING AND SAFETY DIVISION. (B) ALL BACKFILL AND EARTH REPLACED SHALL BE COMPACTED TO A MINIMUM OF 80% OF MAXIMUM DENSITY PER A.S.T.M. STD. METHOD OF TEST D998 57 AS MODIFIED. ACCEPTABLE CERTIFICATION OF SUCH COMPACTION SHALL BE SUBMITTED TO THE CONSTRUCTION DIVISION.

DOUBLE SCALE

B.M. CL 4668 ELEV. 1138.076 L.E. B.M. CONC. HEADWALL & ENTRANCE TO CONTRACTORS YARD 26 FT. N.O. & SANTA SUSANNA PASS ROAD AND 0.3 MILE E/O IVERSON RD. NEWHALL QUAD. 19 83.



NOTE: 1. NUMBERS IN CIRCLES INDICATE PAGE NUMBERS. 2. ALL SEWERS ARE IN SANITARY SEWER R/W'S EXCEPT FOR PAGES 2 & 4. REVISION No. 2 DATE: 7-30-87 BY: B & E ENGINEERS REVISE PROFILE OF STA. 0+02.00 TO STA. 1+11.60 ON SHEET 3, P. 5, ADD 6" I.D. AT STA. 3+80 ON SHEET 7, PAGE 13 B. ADD 6" I.D. AT STA. 1+1/2 ON SHEET 4. PAGE 8. [Signature] 8/1/87 30980 APPROVED: OFFICE OF PUBLIC WORKS DATE R.C.E.

INDEX MAP TRACT No. 44362 PC. No. 10491 SCALE: 1"=600'

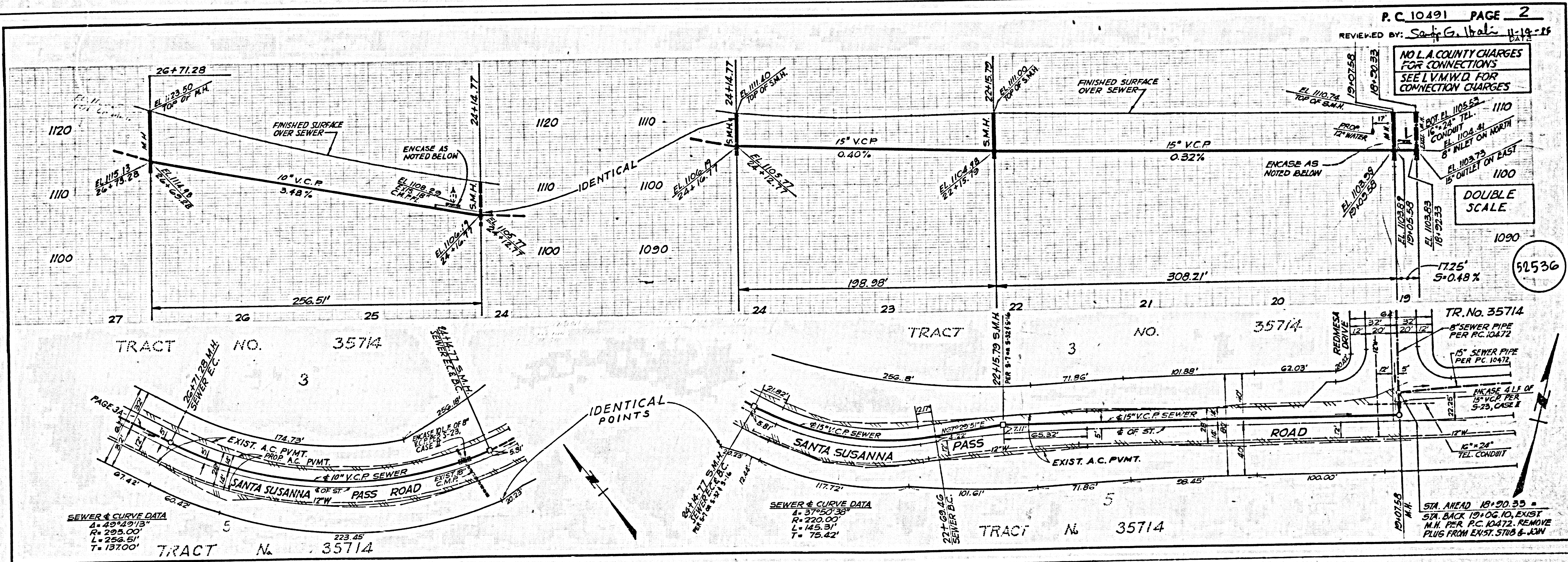
REVISION No. 1 DATE: 6-1-87 BY: B & E ENGINEERS REVISED SEWER DIAMETERS: STA. 1+10.6 TO STA. 1+11.60 TO 18" I.D. STA. 2+14.77 TO STA. 2+15.79 FROM 8" TO 10"; AND INCREASED DEEPS IN M.H. IF SLOPES AS INDICATED BY DIMENSIONS IN P. 5 & 22. [Signature] 6/24/87 30980 APPROVED: OFFICE OF PUBLIC WORKS DATE R.C.E.

REVISION No. 5 DATE: 4-21-88 BY: B & E ENGINEERS REVISE LOCATION OF 6" H.L. FROM STA. 1+80 TO STA. 1+60 FOR BLDG. N. 2 ON PAGE 13 B. [Signature] 4-21-88 33134 APPROVED: OFFICE OF PUBLIC WORKS DATE R.C.E.

REVISION No. 4 DATE: 12-10-87 BY: B & E ENGINEERS REVISE PROFILE FROM STA. 0+02.00 TO STA. 1+11.60 ON PAGE 5, SHEET 3. [Signature] 12-11-87 33134 APPROVED: OFFICE OF PUBLIC WORKS DATE R.C.E.

REVISION No. 3 DATE: 9-1-87 BY: B & E ENGINEERS REVISED SEWER PIPE ALIGNMENT FROM M.H. STA. 18+20.33 TO STA. 20+38.89 AND PROFILE FROM M.H. STA. 18+20.33 TO M.H. STA. 22+15.79. [Signature] 9/1/87 30980 APPROVED: OFFICE OF PUBLIC WORKS DATE R.C.E.

ISSUE NO HOUSE CONNECTION PERMITS UNTIL P.C. 10472 IS ACCEPTED BY L.A. COUNTY FOR PUBLIC USE



P.C. 10491 PAGE 2 REVIEWED BY: [Signature] 11-19-86 DATE

NO L.A. COUNTY CHARGES FOR CONNECTIONS SEE L.V.M.W.D. FOR CONNECTION CHARGES

ENCASE AS NOTED BELOW

ENCASE AS NOTED BELOW

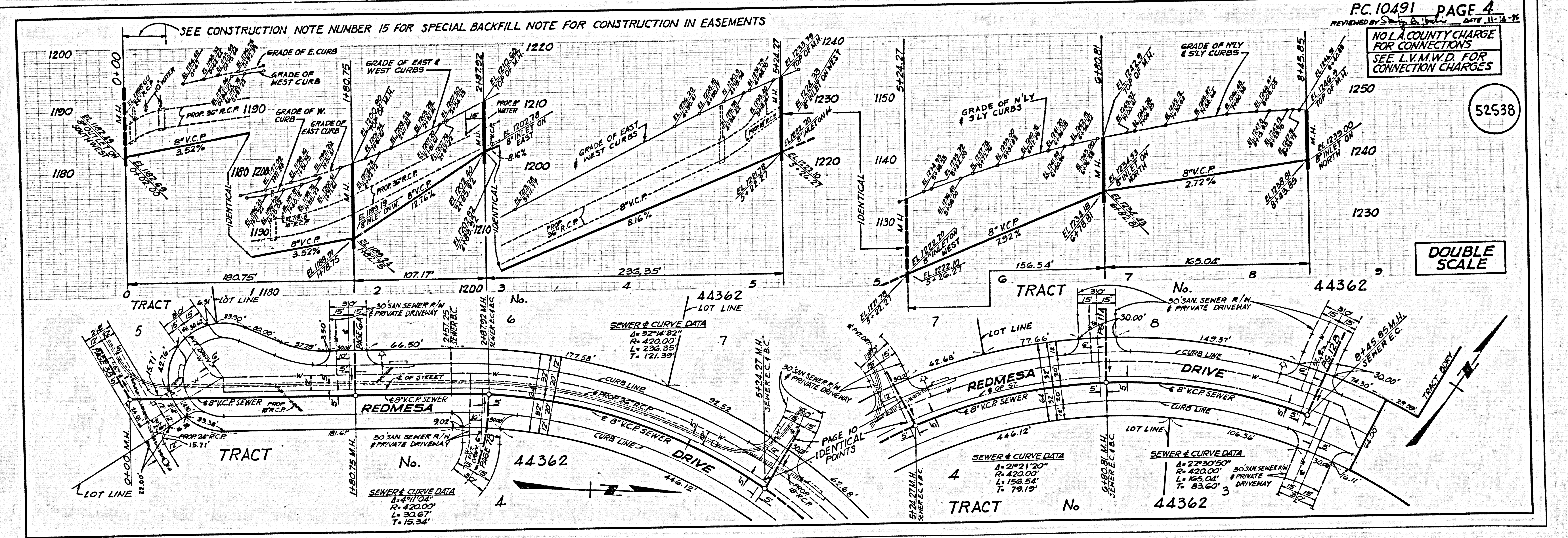
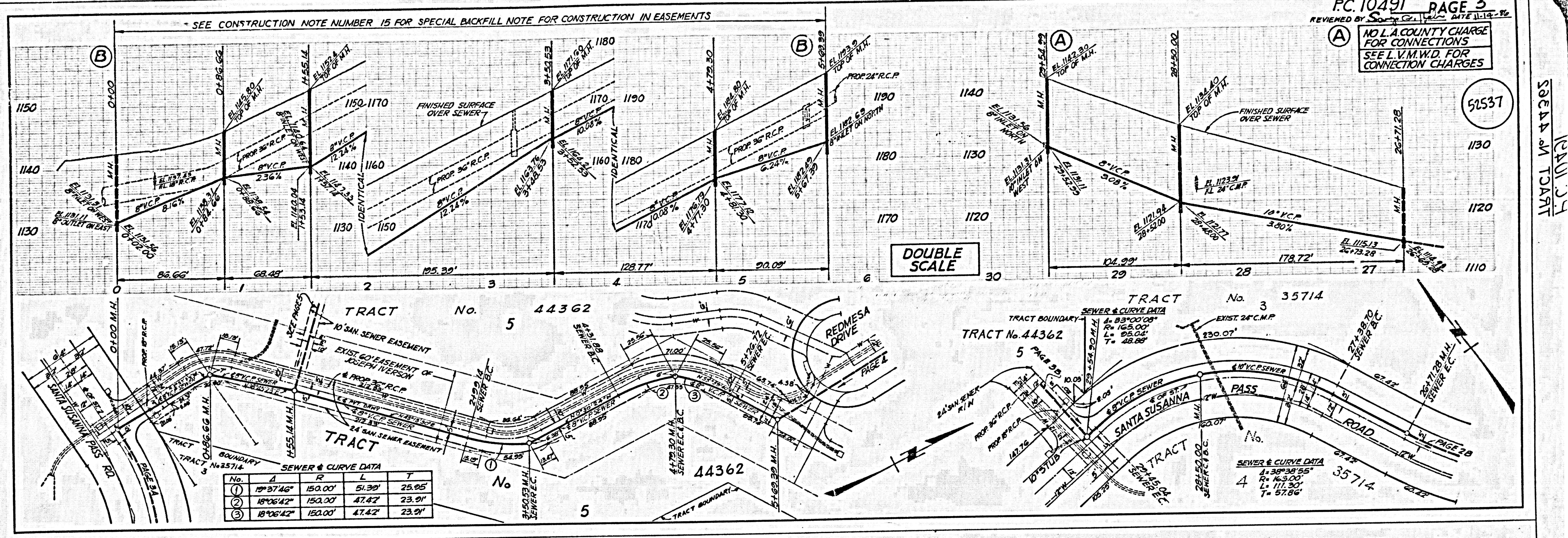
ENCASE AS NOTED BELOW

ENCASE AS NOTED BELOW

ENCASE AS NOTED BELOW

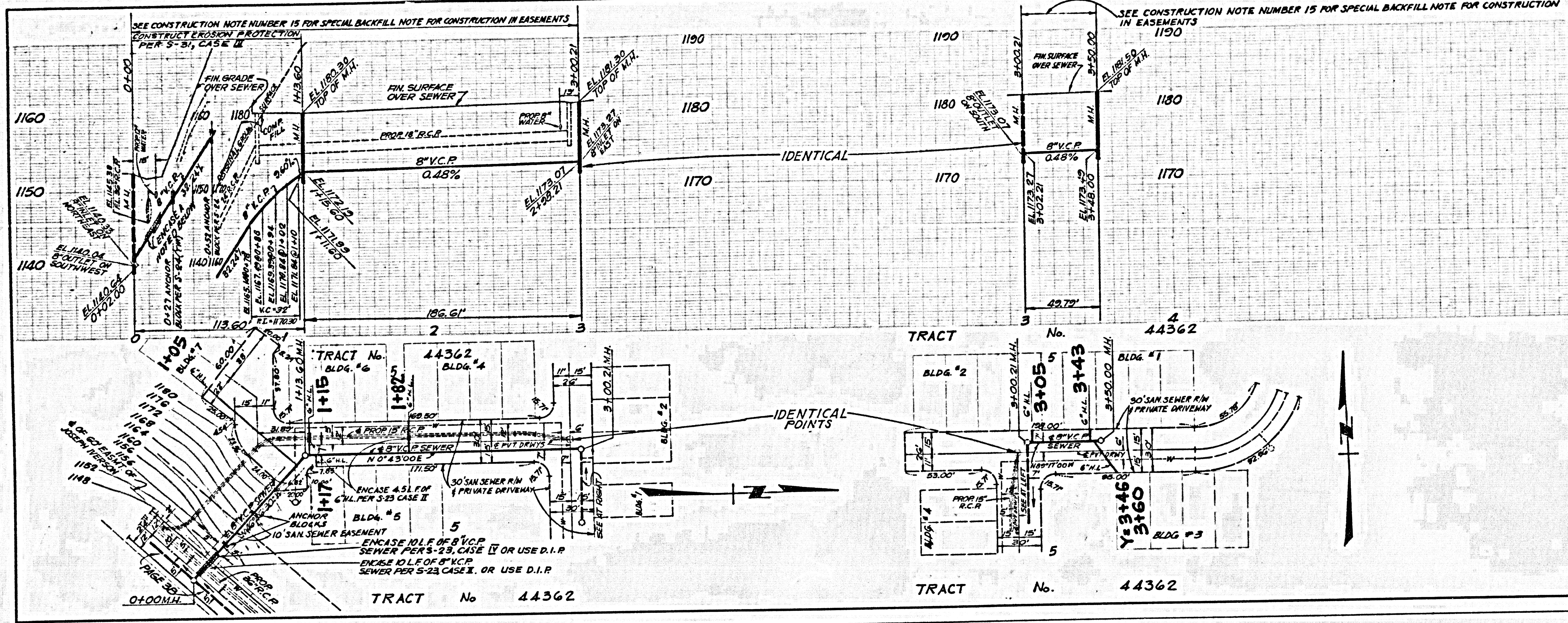
ENCASE AS NOTED BELOW

ENCASE AS NOTED BELOW



NO L.A. COUNTY CHARGE FOR CONNECTIONS
 SEE L.V.M.W.D. FOR CONNECTION CHARGES

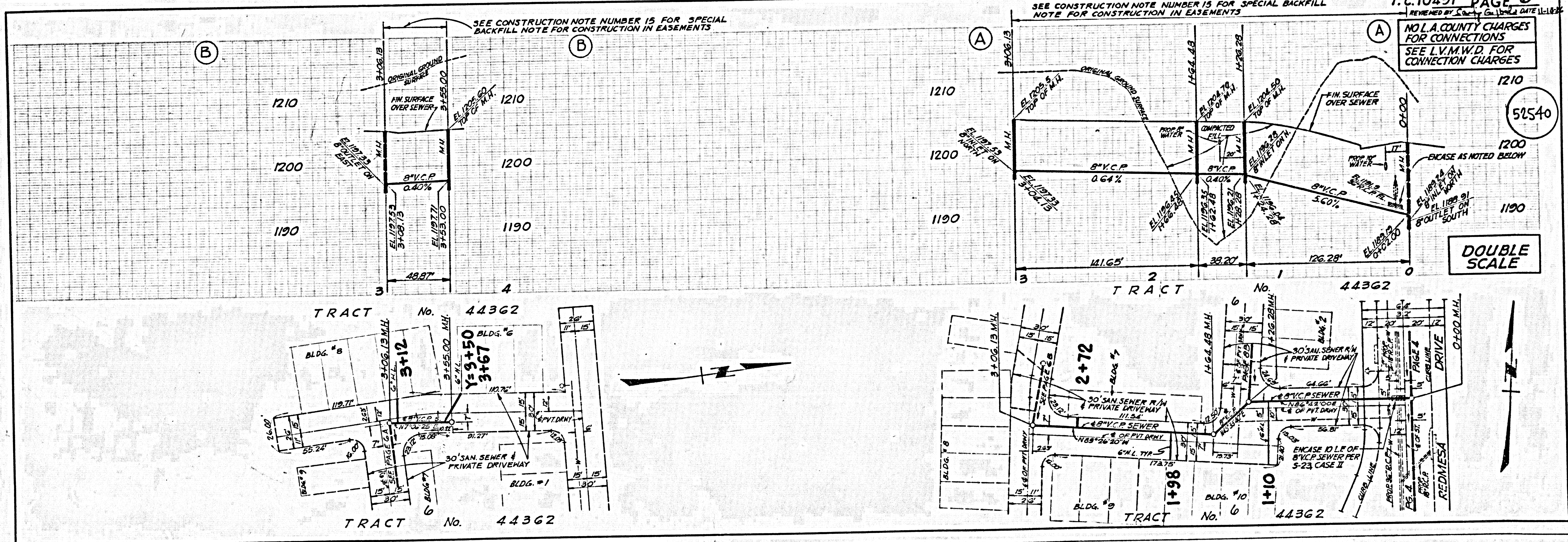
52539



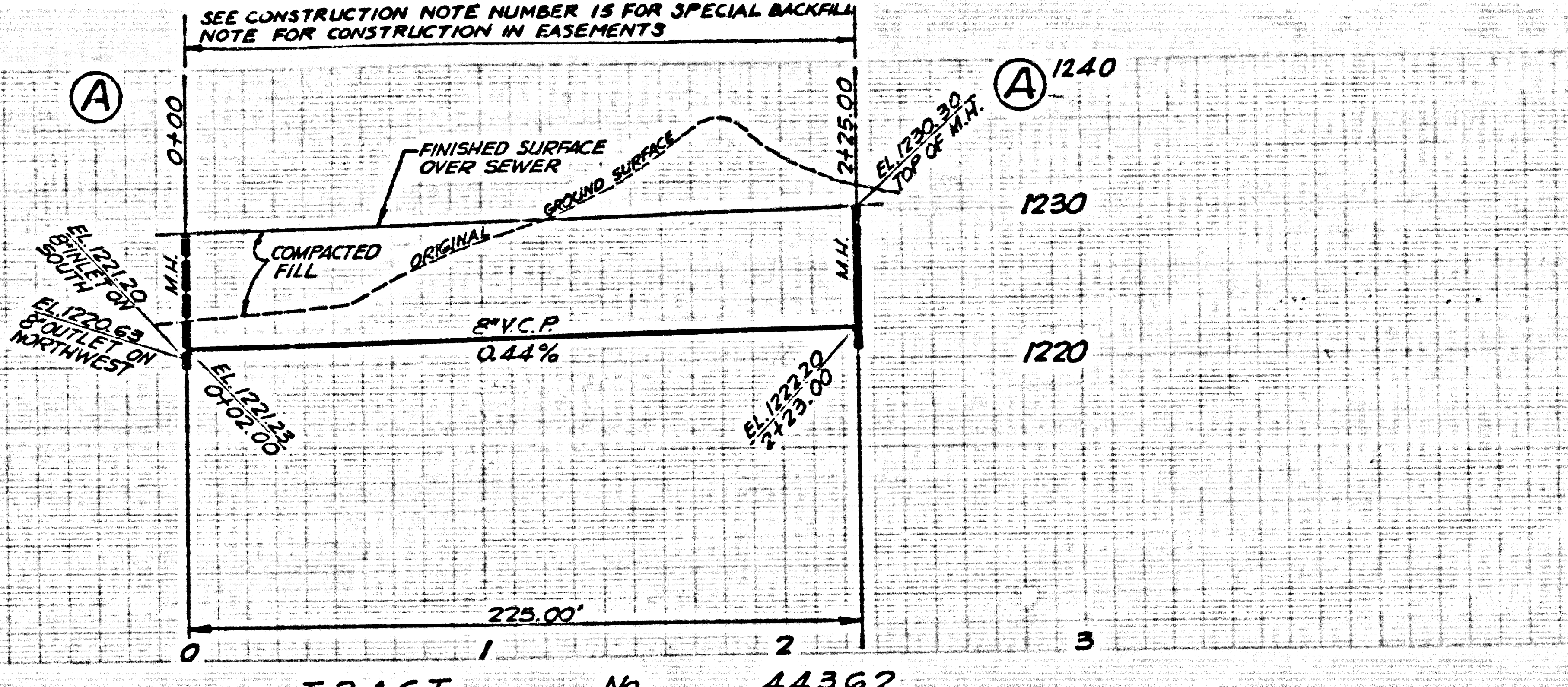
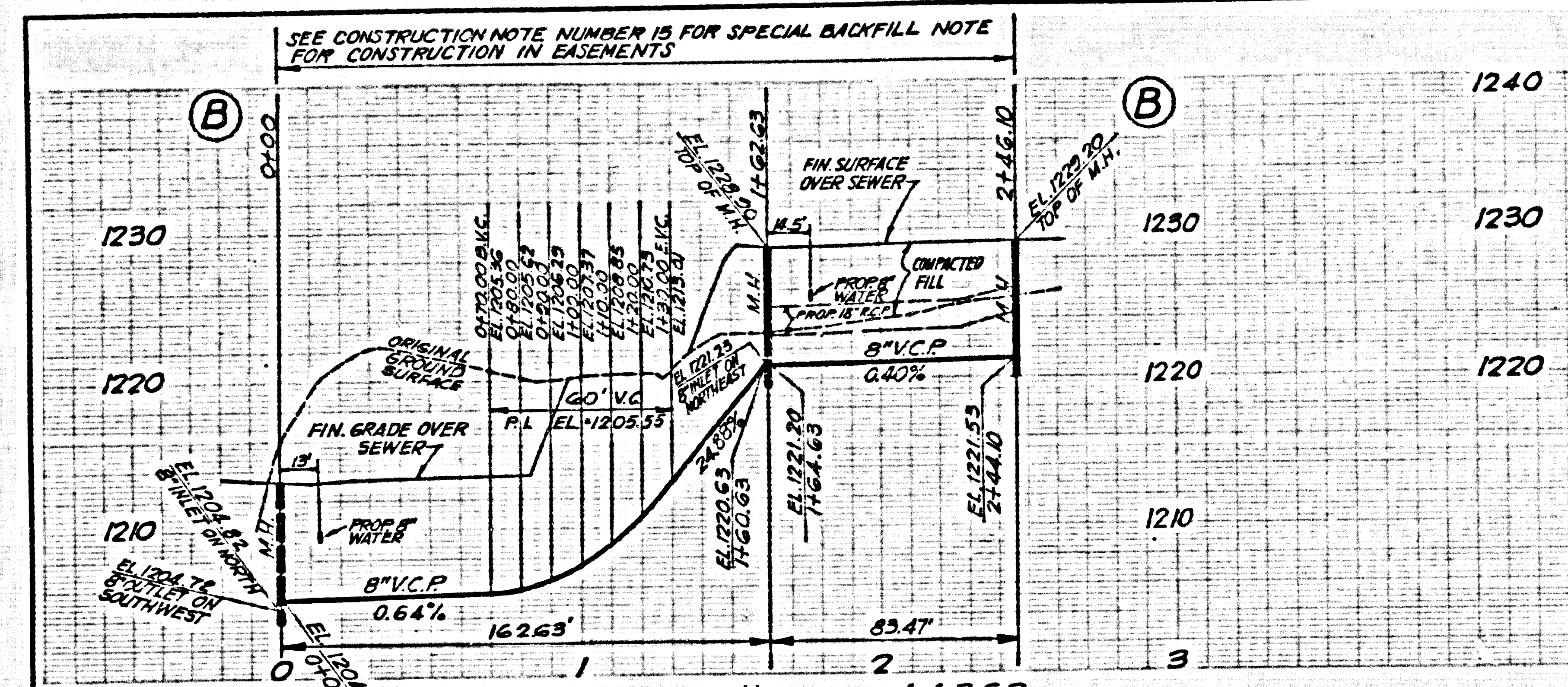
DOUBLE SCALE

NO L.A. COUNTY CHARGES FOR CONNECTIONS
 SEE L.V.M.W.D. FOR CONNECTION CHARGES

52540



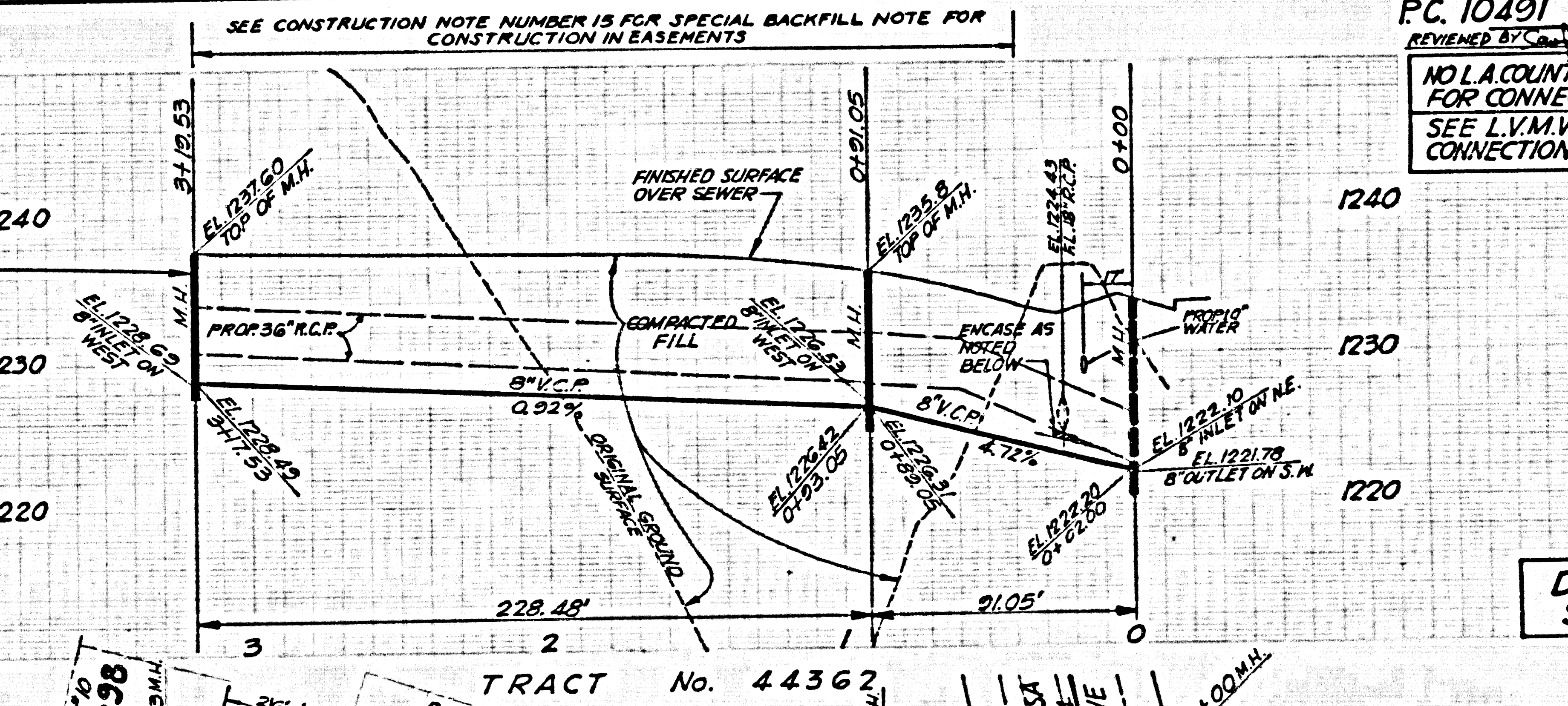
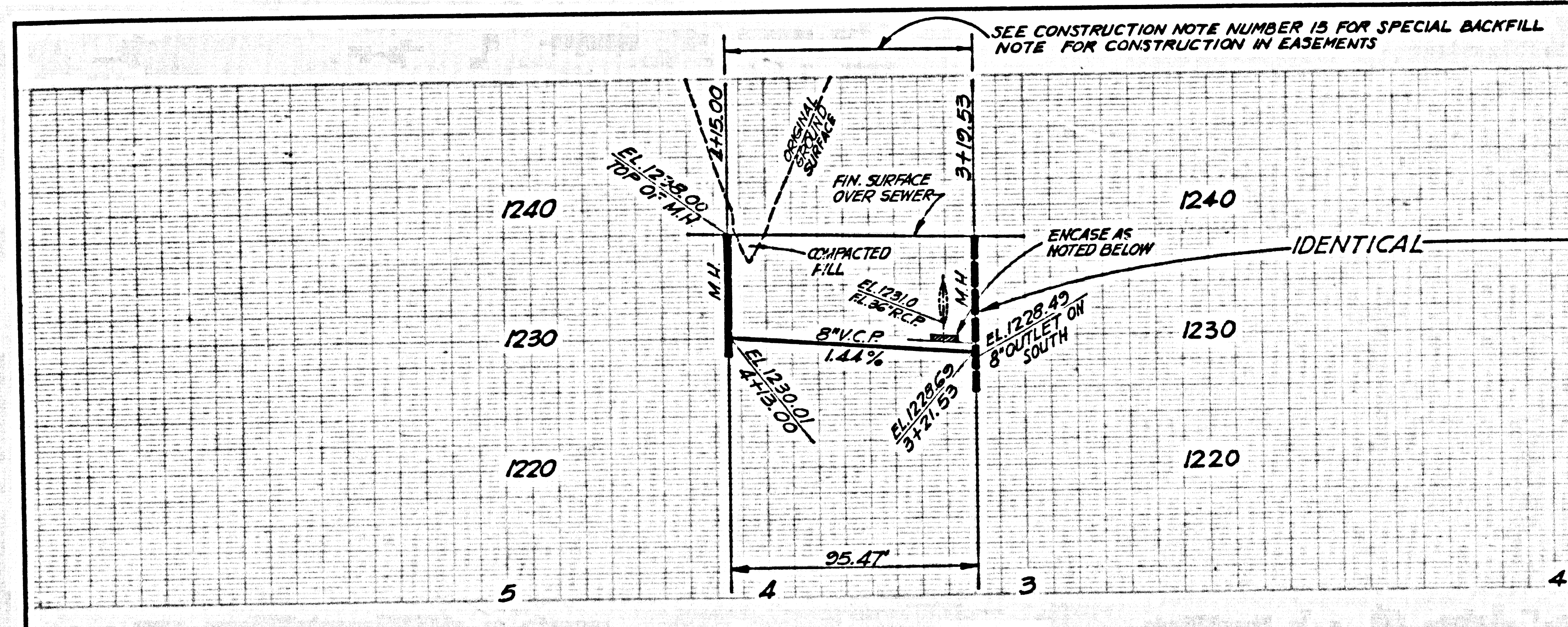
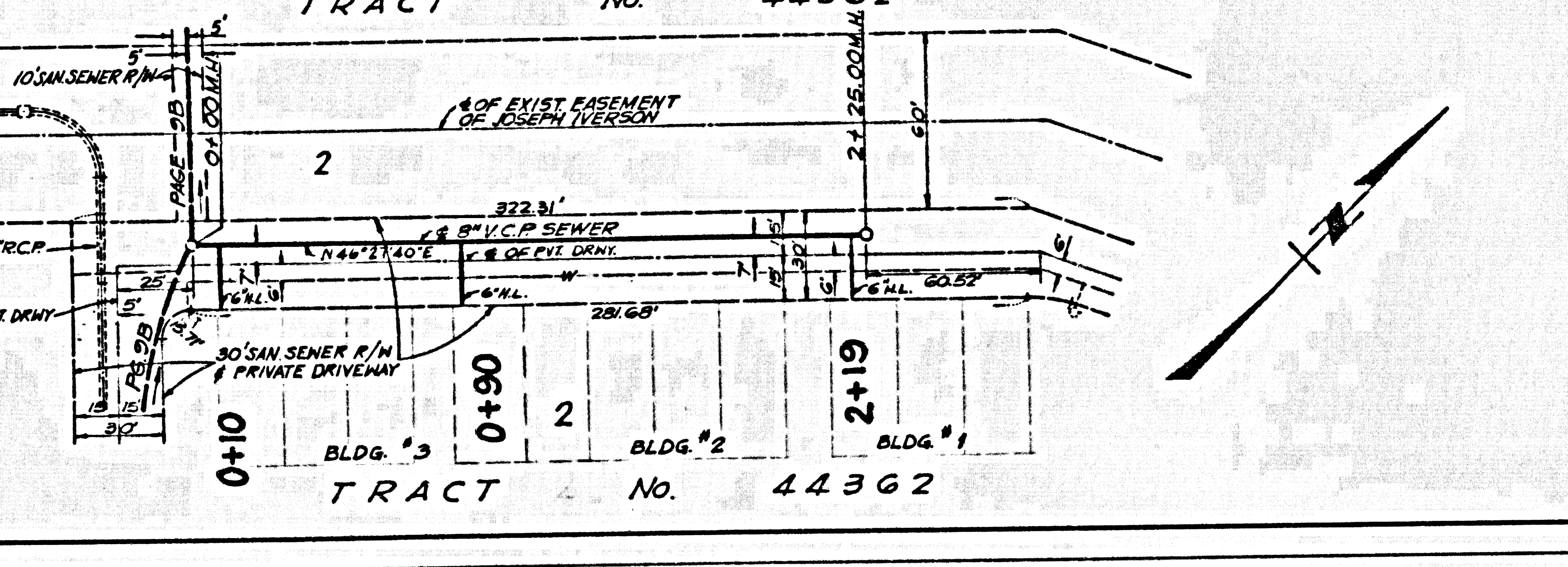
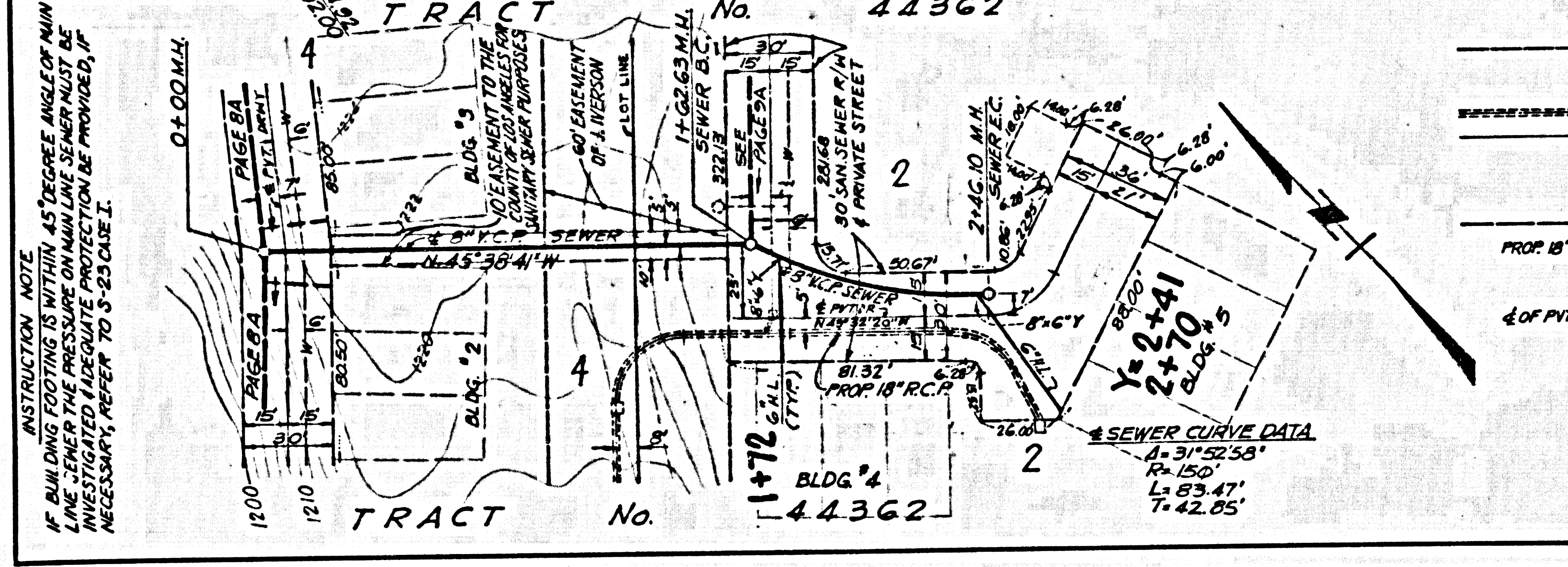
DOUBLE SCALE



PC. 10491 PAGE 9
 REVIEWED BY: [Signature] DATE: 11-11-10
 NO L.A. COUNTY CHARGE FOR CONNECTIONS
 SEE L.V.M.W.D. FOR CONNECTION CHARGES

52543

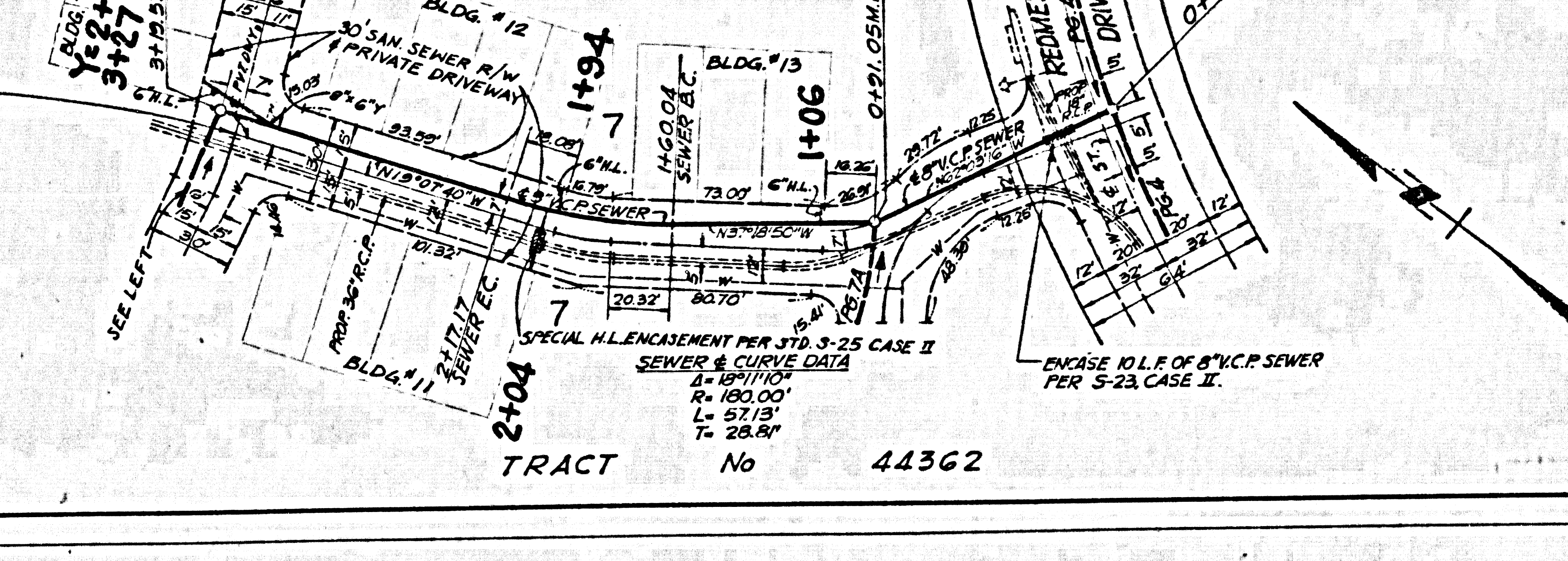
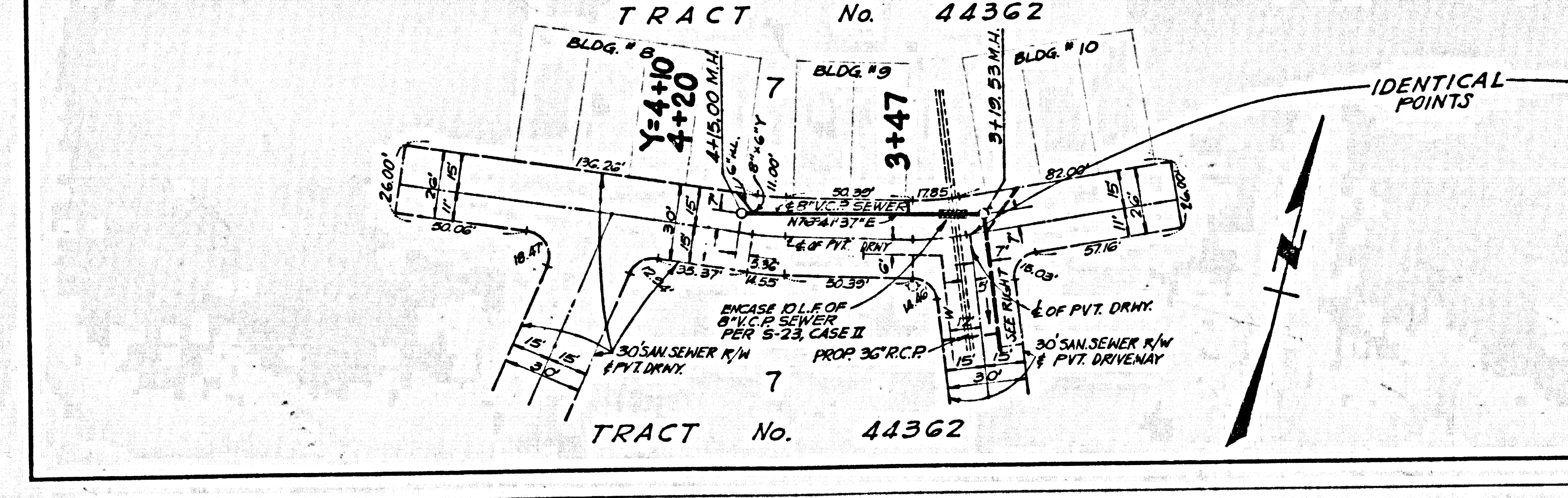
DOUBLE SCALE



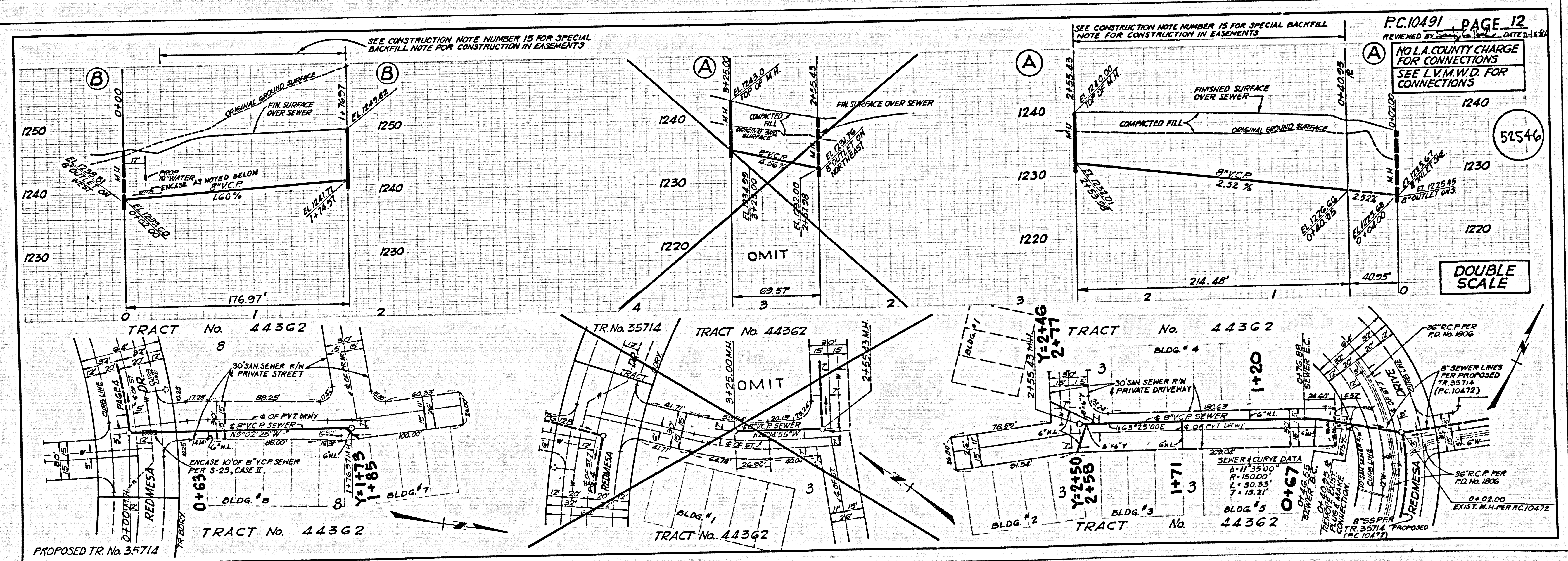
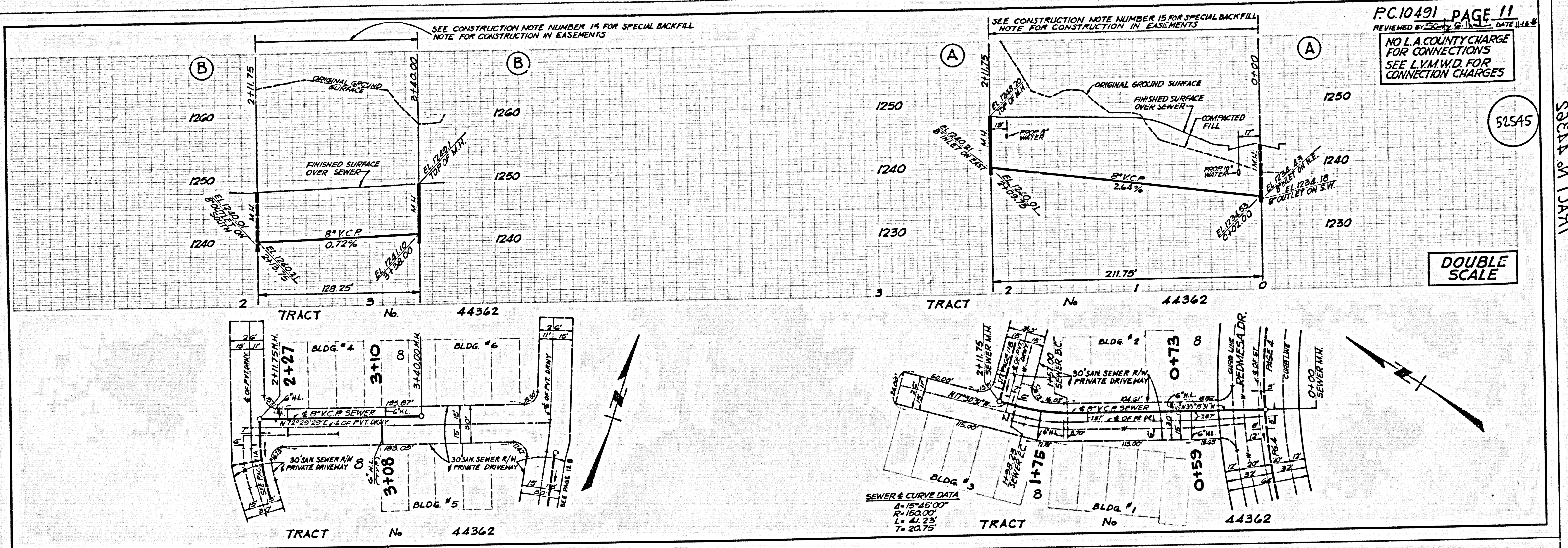
PC. 10491 PAGE 10
 REVIEWED BY: [Signature] DATE: 11-11-10
 NO L.A. COUNTY CHARGE FOR CONNECTIONS
 SEE L.V.M.W.D. FOR CONNECTION CHARGES

52544

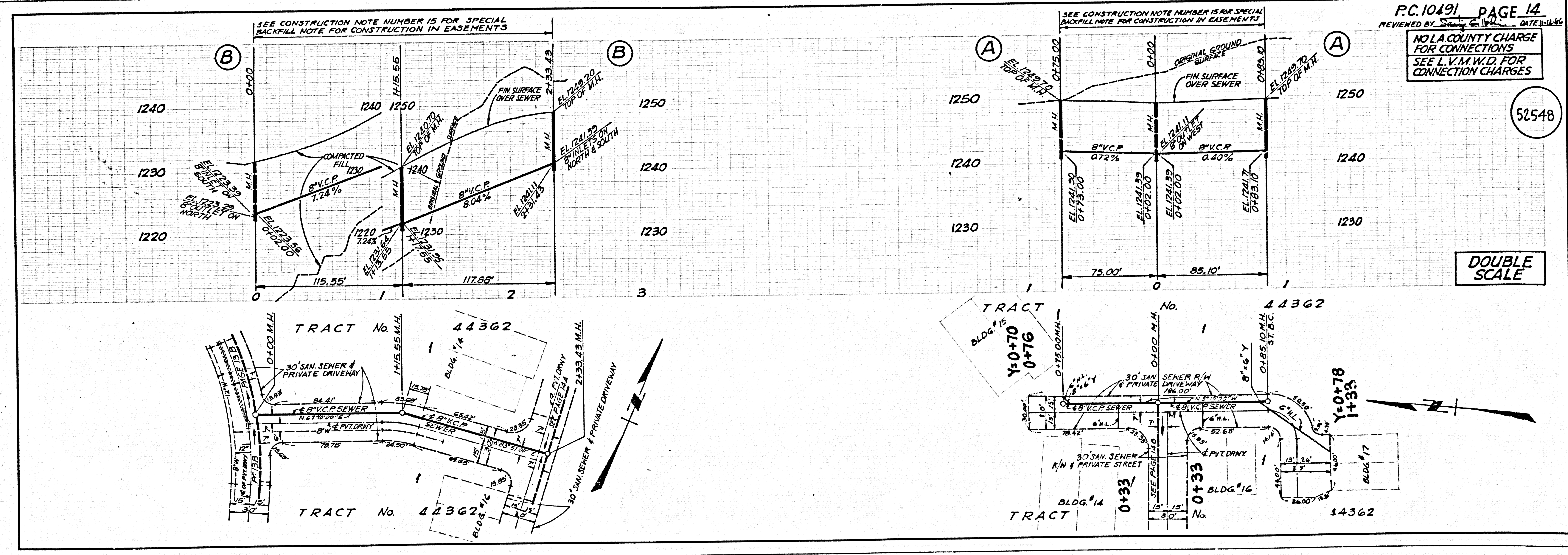
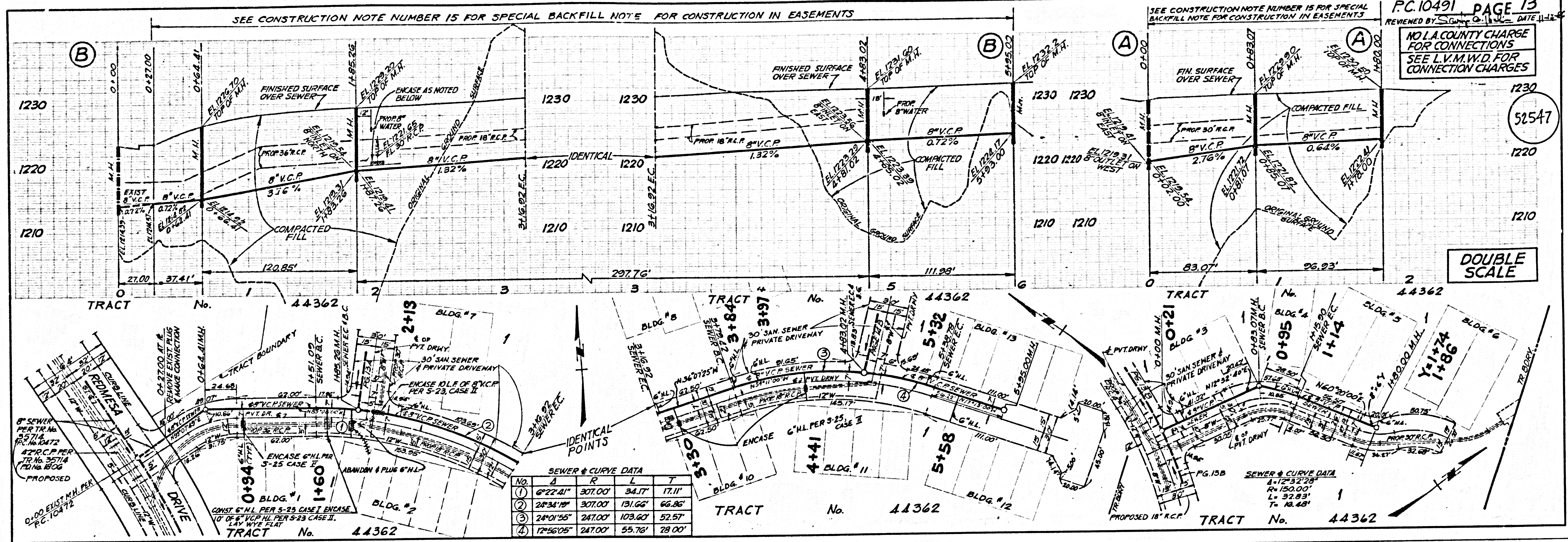
DOUBLE SCALE



10401 09
 50344 M TAART



10491 09
 SEEN IN TRACT



1610139
SCELA M TRACT