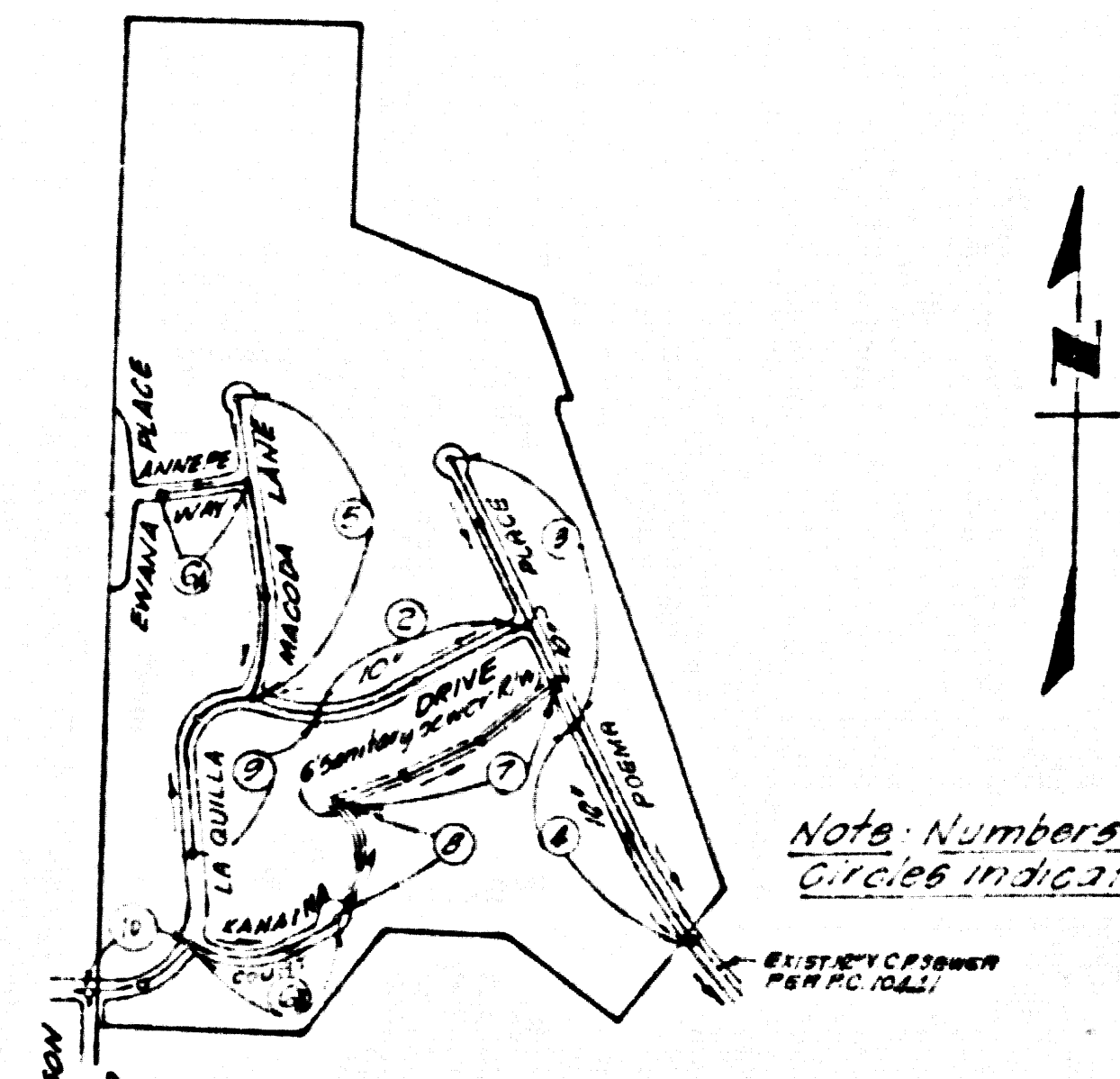


B.M. 4670 ELEV. 1418.453
 ROAD WID. AND 1580 DOWN G' WITH CASE & COVER DIT.
 E.O. CL. TO N. 100' S. 55° E. 26 FT. E.O. DIRT ROAD 0.75 MI.
 N.E.V. CL. ON SANTA SUSANA PASS RD. IN PERSON ROAD 0.35 MI.
 N.1/2 ENT. TO MAIN SPRINGS ROAD 1/4 MI. W. WITNESS POST. ST. UP 2 FT. E.
 NEWHALL QUAD. 19 23 ADJ.



NOTE:
 SANITARY SEWER - PRESSURE WATER MAIN CROSSING
 WHERE WATER MAIN PASSES PERPENDICULAR OVER SANITARY SEWER WITH LESS THAN 3'-0" VERTICAL SEPERATION AS INDICATED ON PLAN SHEETS, SANITARY SEWER PIPE IS TO BE CEMENT MORTAR LINED DUCTILE IRON PIPE WITH HOT DIP BITUMINOUS COATING AND STANDARD PUSH-ON JOINTS - NO JOINT IS TO BE WITHIN 4'-0" HORIZONTALLY OF ANY PORTION OF THE PRESSURE WATER MAIN

DOUBLE SCALE

REVISION NO. 1 DATE: 9-23-87
 DELETE HOUSE LATERALS, LOTS 12-17
 PAGE 2, STA 1+00 TO 7+00
 ADD HOUSE LATERALS, LOTS 12-17,
 PAGE 7, STA 1+00 TO 8+00
 APPROVED: *Sally G. Balala* 9-23-87

REVISION NO. 2 DATE: 1-18-89
 REVISE ALIGNMENT VIGNITY LOTS 4, 5, 12
 PAGES 7, 8, 9, STA. 8+40.63 TO 12+45.99
 EXTEND SEWER TO TRACT NO. 39622
 PAGE 10, STA. 0+70 TO 4+00.33
 REVISE ALIGNMENT, ANNERS WAY, PAGES 5, 6A
 APPROVED: *Sally G. Balala* 1-18-89

REVISION NO. 3 DATE: 1-18-89
 REVISE CURB GRADE ELEVATIONS ON
 THE ROADWAY FROM STA. 1+55
 TO 2+90 ON PAGE 6
 APPROVED: *Sally G. Balala*

REVISION NO. 4 DATE: 02-24-89
 FRONTAGES REVISED AND LOTS REALIGNED
 PER CERTIFICATE OF COMPLIANCE ON
 PAGES 2, 3, 4, 5, 6, 8, 7, 8, 9
 APPROVED: *Sally G. Balala* 3-14-89
 DEPT. OF PUBLIC WORKS

THE EXISTENCE AND LOCATION OF ANY UNDERGROUND UTILITY PIPES OR STRUCTURES SHOWN ON THESE PLANS ARE OBTAINED BY A SEARCH OF THE AVAILABLE RECORDS. TO THE BEST OF OUR KNOWLEDGE THERE ARE NO EXISTING UTILITIES EXCEPT AS SHOWN ON THIS MAP. THE CONTRACTOR IS REQUIRED TO TAKE SPECIAL PRECAUTIONARY MEASURES TO PROTECT THE UTILITY LINES SHOWN AND ALL OTHER LINES NOT SHOWN OR NOT SHOWN ON THIS DRAWING.
Edward J. Pearson P.C.E. 9783

GENERAL NOTES:

- ELEVATIONS ARE IN FEET ABOVE U.S.C. & G.S. SEA LEVEL, DATUM OF 1929.
- NO REVISIONS SHALL BE MADE IN THESE PLANS WITHOUT THE APPROVAL OF THE DIRECTOR OF PUBLIC WORKS.
- NO REPRESENTATIVE OF THE COUNTY ENGINEER WILL SURVEY OR LAY OUT ANY PORTION OF THE WORK.
- GRADES TO WHICH THE IMPROVEMENT IS TO BE CONSTRUCTED ARE SHOWN ON PLANS AND PROFILES. GRADE POINTS FOR TOP OF CURBS, CENTER LINE OF STREETS OR CENTER LINE OF ALLEYS ARE SHOWN BY CIRCLES ON PROFILES AT ALL POINTS BETWEEN DESIGNATED POINTS. THE GRADE SHALL BE ESTABLISHED SO AS TO CONFORM TO A STRAIGHT LINE DRAWN BETWEEN SAID DESIGNATED POINTS.
- THE PRIVATE ENGINEER SHALL FURNISH THE TOP OF FINISHED GRADE SHEETS AND STATIONING FOR ALL HOUSE LATERALS AND 10" OR 12" MANHOLES AND SHALL PROVIDE STAKES FOR THEM AT THEIR PROPER LOCATIONS IN THE FOLLOWING PLANT MARKED ALL HOUSE LATERALS SHALL BE CONSTRUCTED IN A STRAIGHT ALIGNMENT AT RIGHT ANGLES TO THE MAIN LINE BE RECEIPT AS SHOWN ON THE PLANS. HOUSE LATERALS FROM CURBS TO STAKES SHALL NOT MAKE AN ANGLE OF LESS THAN 45° WITH THE MAIN LINE SEWER. ANY CHANGE IN ALIGNMENT SHALL BE REQUESTED BY WRITING BY THE PRIVATE ENGINEER.
- THE PRIVATE ENGINEER SHALL FURNISH THE HOUSE LATERAL DEPTH AT THE PROPERTY LINE AND THE COUNTY ELEVATION FOR EACH HOUSE LATERAL ON THE GRADE SHEET.
- BEFORE WORK CAN BE STARTED THE CONTRACTOR MUST OBTAIN A PERMIT TO EXCAVATE IN COUNTY STREETS FROM THE COUNTY. BY THE DEPARTMENT OF PUBLIC WORKS OFFICE NO. 8, AND PAY A FEE TO THE DIRECTOR OF PUBLIC WORKS (SEE ALLEYSHEET LOS ANGELES, CALIF. 888) TO COVER THE COST OF CONSTRUCTION INSPECTION AND RECORD PLANS.
- IF WORK IS TO BE DONE IN A STATE HIGHWAY, A PERMIT MUST BE OBTAINED FROM THE STATE OF CALIFORNIA, DIVISION OF HIGHWAYS, 130 SOUTH SPRING STREET, LOS ANGELES, CALIFORNIA.
- APPROVAL OF THIS PLAN BY THE COUNTY OF LOS ANGELES DOES NOT CONSTITUTE A REPRESENTATION AS TO THE ACCURACY OF THE LOCATION OF OR THE EXISTENCE OR NON-EXISTENCE OF ANY UNDERGROUND UTILITY PIPE OR STRUCTURE WITHIN THE LIMITS OF THIS PROJECT. THIS NOTE APPLIES TO ALL PAGES.
- REFER TO SECTION 136.01 OF THE STANDARD SPECIFICATIONS, REGARDING SAFETY ORDERS.
- PRIOR TO THE ISSUANCE OF THE REQUIRED SEWER CONSTRUCTION PERMIT, THE CONTRACTOR SHALL OBTAIN AND FILE WITH THE DEPARTMENT OF PUBLIC WORKS (OFFICE NO. 8) A PERMIT TO EXCAVATE IN COUNTY STREETS FROM THE COUNTY. BY THE DEPARTMENT OF PUBLIC WORKS OFFICE NO. 8, AND PAY A FEE TO THE DIRECTOR OF PUBLIC WORKS (SEE ALLEYSHEET LOS ANGELES, CALIF. 888) TO COVER THE COST OF CONSTRUCTION INSPECTION AND RECORD PLANS.

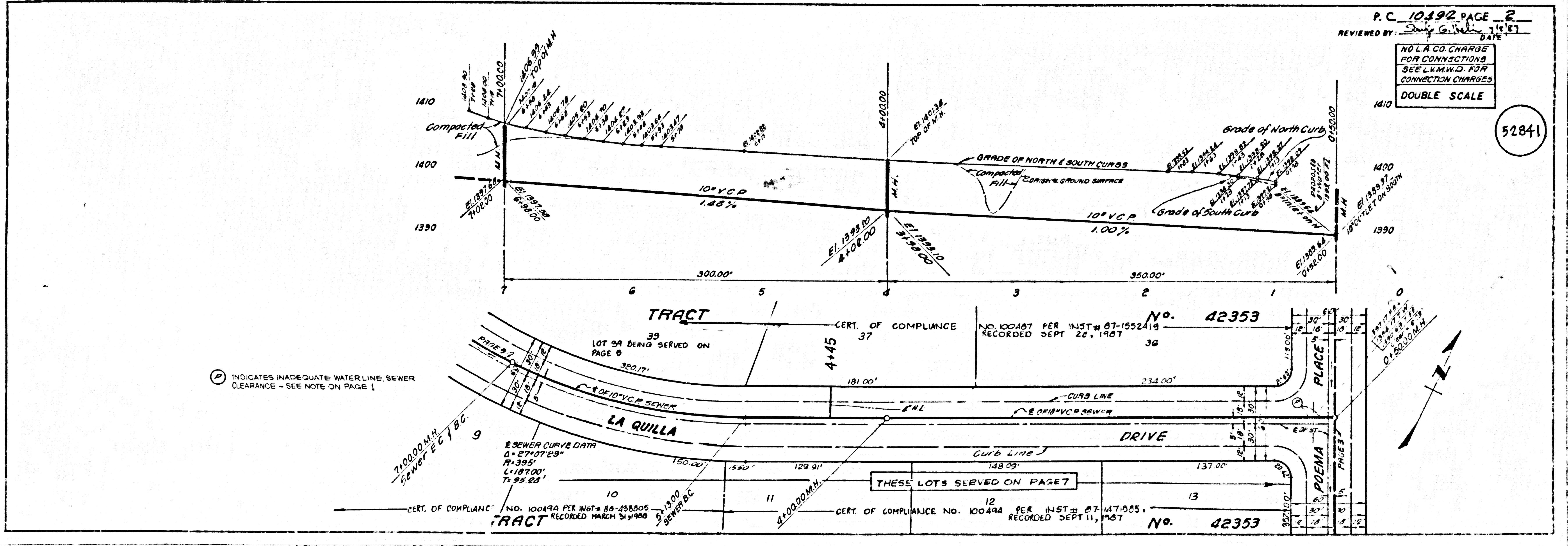
CONSTRUCTION NOTES:

- WORK SHALL BE CONSTRUCTED ACCORDING TO THE STANDARD SPECIFICATIONS FOR PUBLIC WORKS CONSTRUCTION (1988 EDITION) WITH THE EXCEPTS HEREIN, AND COUNTY SPECIFICATIONS OF PUBLIC WORKS SPECIAL PROVISIONS AND THE CONSTRUCTION OF SANITARY SEWERS, DEPT. 81, 1978 AND SHALL BE PREPARED ONLY IN THE PRESENCE OF THE SUPERVISOR OF PUBLIC WORKS.
- THE CONTRACTOR SHALL NOTIFY THE SUPERVISOR OF PUBLIC WORKS BY TELEPHONE (310-897-1111) AT LEAST TWENTY-FOUR HOURS BEFORE STARTING ANY WORK UNDER THE CONTRACT.
- HOUSE LATERALS TO BE CONSTRUCTED WITH INVERTS AT PROPERTY LINE 8 FEET BELOW CURB GRADE EXCEPT AS NOTED.
- PIPE OR THE BRANCHES MAY BE USED FOR CONNECTIONS TO MANHOLE BEHIND EXCEPT AS NOTED.
- ALL STRUCTURES SHALL BE EITHER BRICK MANHOLES PER 8-3 OR PRECAST CONCRETE MANHOLES PER 8-3L EXCEPT AS NOTED.
- PROVIDE STAKES ON THE PROPERTY LINE OR PROPERTY LINES PRODUCED AT RIGHT ANGLES TO THE SEWER LINE AT THE CENTER LINE OF EACH MANHOLE.
- MANHOLE TOPS IN UNIMPROVED PORTS OF WAY TO BE 8 INCHES ABOVE FINISHED GRADE.
- WITHRIM CLAY PIPE JOINTS SHALL BE TYPE "C" OR "D" PER STANDARD SPECIFICATIONS SECTION 308-2.
- IF A POWER POLE WITHIN THREE FEET OF THE SEWER, THE SEWER SHALL BE ENCASED PER 8-3L CASE 4, TWO FEET ON EACH SIDE FROM THE POINT OF INTERFERENCE.
- IF DURING THE COURSE OF CONSTRUCTION IT IS DETERMINED THAT THE DEPTH IS LESS THAN FOUR FEET OF COVER OVER THE TOP OF A MAIN LINE OR HOUSE LATERAL SEWER WHICH IS NOT INDICATED ON THE PLANS, THE PIPE SHALL BE ENCASED PER 8-3L CASE 4 UNLESS OTHERWISE APPROVED BY THE COUNTY ENGINEER.
- ALL JOINTS BETWEEN CAST IRON PIPE AND WITHRIM CLAY PIPE SHALL BE MADE WITH A RUBBER SLEEVE JOINT, TYPE "C" OR "D", WITH BUSHING IF NECESSARY PER STANDARD SPECIFICATIONS, SECTION 308-2.
- SEWERS TO BE INSTALLED PER SECTION 308-1 OF THE STANDARD SPECIFICATIONS AND SPECIAL PROVISIONS.
- REASSURE ALL TRENCHES WITHIN PAVED AREAS TO MEET LA COUNTY PUBLIC WORKS OFFICE (CALIFORNIA STREET) UNDERGROUND REPAIRS IN ACCORDANCE WITH PERMITS.
- FULL COMPLIANCE WITH SECTION 308-1 AND THE STAND. SPEC. SHALL BE REQUIRED FOR BACKFILL IN STREETS. CORRECT LOCATION OF BACKFILL, COMPACTED AND SHOWN BY A QUALIFIED REGISTERED TESTER. BACKFILL SHALL BE PROVIDED BY THE PERMITTEE PRIOR TO THE ISSUANCE OF A CERTIFICATE OF PARTIAL ACCEPTANCE.
- SPECIAL BACKFILL IN PAVED AREAS CONSTRUCTION: (A) BACKFILL TRENCH AND REPLACE OTHER PAVEMENT SO AS TO ACHIEVE THE ORIGINAL OR FINISHED GRADE AND IS COVERED WITHIN ON THE GRADED PLAN APPROVED FOR THE DEVELOPMENT BY THE LA PD DEVELOPMENT DIVISION. (B) ALL BACKFILL AND CEMENT SHALL BE COMPACTED TO A MINIMUM OF 95% OF MAXIMUM DENSITY PER ASTM METHOD OF TEST D1557 AS MODIFIED. ACCEPTABLE CERTIFICATION OF SUCH COMPACTION SHALL BE SUBMITTED TO THE COUNTY ENGINEER DIVISION.

PROFILE, ALIGNMENT AND GRADE SHEET PAGE 1
SANITARY SEWERS
 TO BE CONSTRUCTED IN
TRACT NO. 42353
PRIVATE CONTRACT NO. 10492
 W.S. 61
 5 SHEETS, 10 PAGES
 SCALE: VERT. 1" = 6' HORIZ. 1" = 100' JANUARY, 1986
 PREPARED IN THE OFFICES OF
THE PEARSON GROUP
 1955 W. REDONDO BEACH BLVD., GARDENA, CA, 90247
 BY: *Edward J. Pearson*
 REG. C.E. No. 9782

ITEM	QUANTITY	UNIT PRICE	TOTAL
MINIMUM PUBLIC SAFETY EQUIPMENTS	1	5.00	5.00
MINIMUM PUBLIC SAFETY EQUIPMENTS	1	5.00	5.00
STANDARD MANHOLE TOP	1	1.17	1.17
SEWING FOR SEWER PIPE	1	1.17	1.17
CALCULATIONS AND CHECKS	1	1.17	1.17
TYPE OF THE MANHOLE	1	1.17	1.17
ALUMINUM TRENCH MARKS	1	1.17	1.17
WOODEN MANHOLE PLANK AND COVERS	1	1.17	1.17
NON-REINFORCED PRECAST CONCRETE MANHOLE	1	1.17	1.17
CHANNEL AND RAIL	1	1.17	1.17
SPECIAL HOUSE LATERALS	1	1.17	1.17
EROSION PROTECTION	1	1.17	1.17

COUNTY OF LOS ANGELES, CALIFORNIA
 THOMAS A. TIDEMANSON DIRECTOR OF PUBLIC WORKS LAS VIRGENES MUNICIPAL WATER DISTRICT
 APPROVED: *Tom Tidemanson* 7-15-87 DATE
 APPROVED: *Sally G. Balala* 7-15-87 DATE
 CHECKED: *K. Williams* 7-19-87 DATE
 REG. C.E. NO. 16141
 CALABASAS BIDG. DIST. 91



P.C. 10492 PAGE 2
 REVIEWED BY: *Sally G. Balala* 7-15-87
 DATE
 NO L.A. CO. CHARGE FOR CONNECTIONS
 SEE L.A. M.W.D. FOR CONNECTION CHARGES
DOUBLE SCALE

52841

