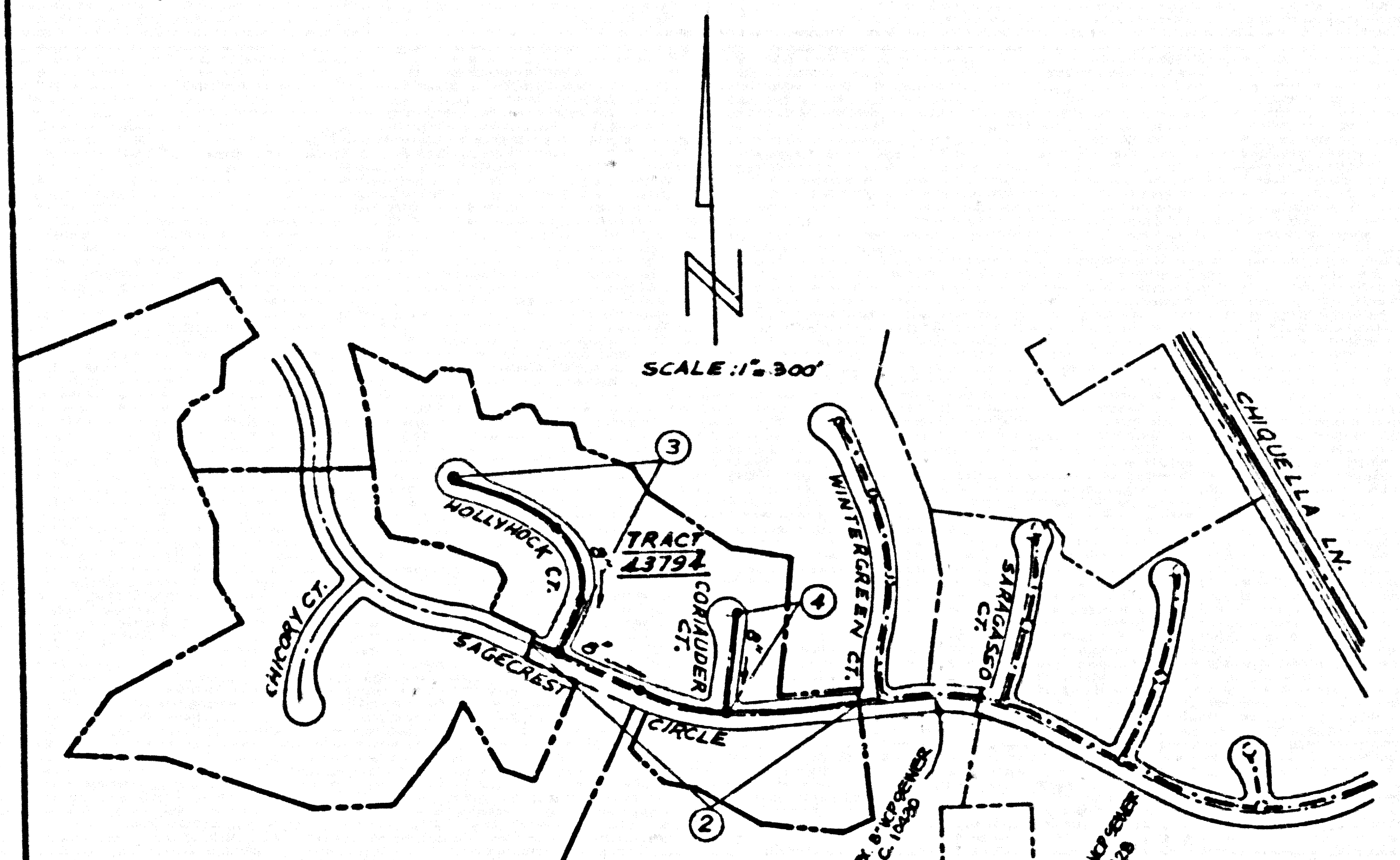


B.M. 3962 ELEV. 1365.072
 CAL TRANS DIV OF HIGHWAYS, TAG IN SIDEWALK
 MARKED - (83 017) 2.5' EAST OF W. ST. END
 OF FREEWAY BRIDGE & 21' SOUTH OF
 LYONS AVE.
 NEW HALL QUAD. 1972



NOTE: NUMBERS IN CIRCLES INDICATE PAGE NUMBERS

DOUBLE SCALE

GENERAL NOTES:

- ELEVATIONS ARE IN FEET ABOVE U.S.C. & G.S. SEA LEVEL DATUM OF 1929
- NO REVISIONS SHALL BE MADE TO THE APPROVAL OF THE DEPT. OF PUBLIC WORKS
- NO REPRESENTATION OF THE CONTRACTOR SHALL BE MADE BY OR LAY OUT ANY PORTION OF THE WORK
- BRACED TO WHICH THIS IMPROVEMENT IS TO BE CONSTRUCTED ARE SHOWN ON PLANS AND PROFILES GRADE POINTS FOR TOP OF CURB, CENTER LINE OF STREETS OR CENTER LINE OF ALLEYS ARE SHOWN BY CIRCLES ON PROFILES AT ALL POINTS. ON THE INDEX MAP SHOWN POINTS THE GRADE SHALL BE ESTABLISHED SO AS TO CONFORM TO A STRAIGHT LINE DRAWN BETWEEN SAID DESIGNATED POINTS
- THE PRIVATE ENGINEER SHALL FURNISH THE COUNTY ENGINEER WITH GRADE SHEETS AND STATIONING FOR ALL HOUSE LATERALS AND CITY BRANCHES AND SHALL PROVIDE STAKES FOR THEM AT THEIR RESPECTIVE LOCATIONS WITH STATIONING AND BENCH MARKS ALL HOUSE LATERALS SHALL BE CONSTRUCTED IN A STRAIGHT ALIGNMENT AT RIGHT ANGLES FROM THE MAIN LINE SEWER EXCEPT AS SHOWN ON THE PLANS. HOUSE LATERALS FROM CHIMNEYS SHALL NOT HAVE AN ANGLE OF LESS THAN 45° WITH THE MAIN LINE SEWER. ANY CHANGE IN ALIGNMENT SHALL BE REQUESTED BY WRITING BY THE PRIVATE ENGINEER
- THE PRIVATE ENGINEER SHALL FURNISH THE HOUSE LATERAL, SEPTIC TANK OR PROPERTY LINE BELOW THE TOP OF CURB ELEVATION FOR EACH HOUSE LATERAL ON THE GRADE SHEET
- BEFORE WORK CAN BE STARTED THE CONTRACTOR MUST OBTAIN A PERMIT TO EXCAVATE IN COUNTY STREETS FROM THE L.A. COUNTY ROAD DEPT. (DISTRICT OFFICE NO. 5) AND PAY A FEE TO THE COUNTY ENGINEER 50¢ PER WAGON LOAD. LOS ANGELES CITY ENGINEER TO COVER THE COST OF CONSTRUCTION INSPECTION AND RECORD PLANS
- IF WORK IS TO BE DONE ON A STATE HIGHWAY A PERMIT MUST BE OBTAINED FROM THE STATE OF CALIFORNIA DIVISION OF HIGHWAYS, 150 SOUTH SPRING STREET, LOS ANGELES, CALIFORNIA
- APPROVAL OF THIS PLAN BY THE COUNTY OF LOS ANGELES DOES NOT CONSTITUTE A REPRESENTATION AS TO THE ACCURACY OF THE LOCATION OF OR THE EXISTENCE OR NON-EXISTENCE OF UNDERGROUND UTILITY LINES OR STRUCTURES WITHIN THE LIMITS OF THIS PROJECT. THIS NOTE APPLIES TO ALL PAGES
- REFER TO SECTION 704.1 OF THE STANDARD SPECIFICATIONS REGARDING SAFETY ORDERS
- IN ORDER TO OBTAIN THE PERMIT TO EXCAVATE IN COUNTY STREETS THE CONTRACTOR SHALL OBTAIN AND FILE WITH THE DEPT. OF PUBLIC WORKS COPIES OF A PERMIT TO EXCAVATE IN COUNTY STREETS FROM THE LOS ANGELES COUNTY ROAD DEPARTMENT, PUBLIC UTILITIES AND TRAFFIC FROM THE STATE OF CALIFORNIA, DIVISION OF HIGHWAYS SAFETY AND ALTERNATIVE TRANSPORTATION FROM THE DEPARTMENT OF PUBLIC WORKS, 150 SOUTH SPRING STREET, LOS ANGELES, CALIFORNIA. THE COUNTY OF LOS ANGELES IS NOT RESPONSIBLE FOR THE ACCURACY OF ANY SUBSTRUCTURE SHOWN ON THESE PLANS.

CONSTRUCTION NOTES:

- WORK SHALL BE CONSTRUCTED ACCORDING TO THE STANDARD SPECIFICATIONS FOR PUBLIC WORKS CONSTRUCTION (PAGE 2000) AND COUNTY ENGINEER SPECIAL PROVISIONS FOR THE CONSTRUCTION OF SANITARY SEWERS DATED DEPT. 21, 1976 AND SHALL BE PROSECUTED ONLY IN THE PRESENCE OF THE COUNTY ENGINEER
- THE CONTRACTOR SHALL NOTIFY THE CONSTRUCTION DIVISION-P.W., TEL. (213) 226-8201 AT LEAST TWENTY FOUR HOURS BEFORE STARTING ANY WORK UNDER THIS CONTRACT
- HOUSE LATERALS TO BE CONSTRUCTED WITH INVERTS AT PROPERTY LINE 8 FEET BELOW CURB GRADE EXCEPT AS NOTED
- PIPE ON THE BRANCHES MAY BE USED FOR CONNECTIONS TO MANHOLE SEWERS EXCEPT AS NOTED
- ALL STRUCTURES SHALL BE EITHER BRICK MANHOLES PER S-2 OR PRECAST CONCRETE MANHOLES PER S-2B EXCEPT AS NOTED
- PROVIDE STAKES ON THE PROPERTY LINE OR PROPERTY LINE PRODUCE AT RIGHT ANGLES TO THE SEWER LINE AT THE CENTER LINE OF EACH MANHOLE
- MANHOLE TOPS IN UNIMPROVED RIGHTS OF WAY TO BE 6 INCHES ABOVE FINISHED GRADE
- WITHIN CLAY PIPE JOINTS SHALL BE TYPE "D" OR "B" PER STANDARD SPECIFICATIONS SECTION 200.2
- IF A POWER POLE IS WITHIN THREE FEET OF THE SEWER THE SEWER SHALL BE ENCASED PER S-2B CASE "A" TWO FEET ON EACH SIDE FROM THE POINT OF INTERFERENCE
- IF DURING THE COURSE OF CONSTRUCTION IT IS DETERMINED THAT THERE IS LESS THAN FOUR FEET OF COVER OVER THE TOP OF A MAIN LINE OR HOUSE LATERAL SEWER WHICH IS NOT INDICATED ON THE PLANS, THE PIPE SHALL BE ENCASED PER S-2B CASE "A" UNLESS OTHERWISE APPROVED BY THE COUNTY ENGINEER
- ALL JOINTS BETWEEN CAST IRON PIPE AND WROUGHT IRON PIPE SHALL BE MADE WITH A RUBBER SHEET JOINT TYPE "C" OR "D" WITH BUSHING IF NECESSARY PER STANDARD SPECIFICATIONS SECTION 200.2
- SEWERS TO BE TESTED FOR LEAKAGE PER SECTION 200.14 OF THE STANDARD SPECIFICATIONS AND SPECIAL PROVISIONS
- REPAIRS TO ALL TRENCHES WITHIN PAVED AREAS TO MEET DEPT. OF PUBLIC WORKS, CALIFORNIA STATE HIGHWAY REQUIREMENTS IN ACCORDANCE WITH SECTION 200.12 OF THE STANDARD SPECIFICATIONS
- ALL COMPACTED AREAS WITHIN SECTION 200.12 OF THE STANDARD SPECIFICATIONS WILL BE REQUIRED FOR BACKFILL IN STREETS. CERTIFICATION OF BACKFILL COMPACTION AND SAND EQUIVALENTS BY A QUALIFIED REGISTERED TESTING LABORATORY SHALL BE PROVIDED BY THE PERMITTEE PRIOR TO THE ISSUANCE OF A CERTIFICATE OF PARTIAL ACCEPTANCE
- SPECIAL BACKFILL IN EXISTING CONSTRUCTION: (A) BACKFILL TRENCHES AND REPLACE OTHER EARTH SO AS TO ACHIEVE THE NATURAL OR FINISHED GRADE AND SLOPE THEREON ON THE GRADES PLAN AS APPROVED FOR THE DEVELOPMENT BY THE BUILDING AND SAFETY DIVISION; (B) ALL BACKFILL AND FATH REJECTED SHALL BE COMPACTED TO A MINIMUM OF 90% OF MAXIMUM DENSITY PER A.S.T.M. METHOD OF 15.7 (95%) AS REQUIRED. ACCEPTABLE CERTIFICATION OF SUCH COMPACTION SHALL BE SUBMITTED TO THE CONSTRUCTION DIVISION
- SPECIAL BACKFILL IN RESIDUAL P.D. AREAS

NO CONNECTION FOR THE DISPOSAL OF INDUSTRIAL WASTES SHALL BE MADE TO SEWERS SHOWN ON THESE DRAWINGS UNTIL A PERMIT FOR INDUSTRIAL WASTEWATER DISCHARGE HAS BEEN ISSUED BY THE SANITATION DISTRICTS FOR SAID CONNECTION.

BEFORE BREAKING INTO OR CONSTRUCTION ON A COUNTY SANITATION DISTRICT SEWER AND PRIOR TO FINAL ACCEPTANCE OF THE PROJECT, SANITATION DISTRICT INSPECTOR SHALL BE NOTIFIED BY PHONE (305) 947-5027 SO THAT REQUIRED INSPECTION CAN BE MADE.

NOTE: MAKE NO HOUSE CONNECTION PERMITS UNTIL P.C. 10430 IS ACCEPTED FOR PUBLIC USE.

SANITARY SEWERS

TO BE CONSTRUCTED IN

TRACT NO. 43794

PRIVATE CONTRACT NO. 10521

A-25 2 SHEETS, 4 PAGES

SCALE: VERT. 1" = 4' HORIZ. 1" = 10'

DATE: JULY, 1986

PREPARED IN THE OFFICES OF

JOEL SILVERMAN & ASSOCIATES

24013 VENTURA CALIF. 91302

REG. C. E. NO. 6124

DEPT. OF PUBLIC WORKS SHALL APPROVE IN THE CONSTRUCTION OF THIS PROJECT	
ISSUES	0.0
STANDARD PUBLIC SANITARY REQUIREMENTS	0.0
BRICK REINFORCE MANHOLE	0.0
STANDARD MANHOLE RING	0.0
BRICKWORK FOR SEWER PIPE	0.0
CASTING AND ENCASING	0.0
PIPE ON THE IMPROVED	0.0
ALIGNMENT FINDER WHEEL	0.0
EXCAVATION MANHOLE FRAME AND COVER	0.0
NON-REINFORCED FIELD IN CONCRETE REINFORCE MANHOLE	0.0

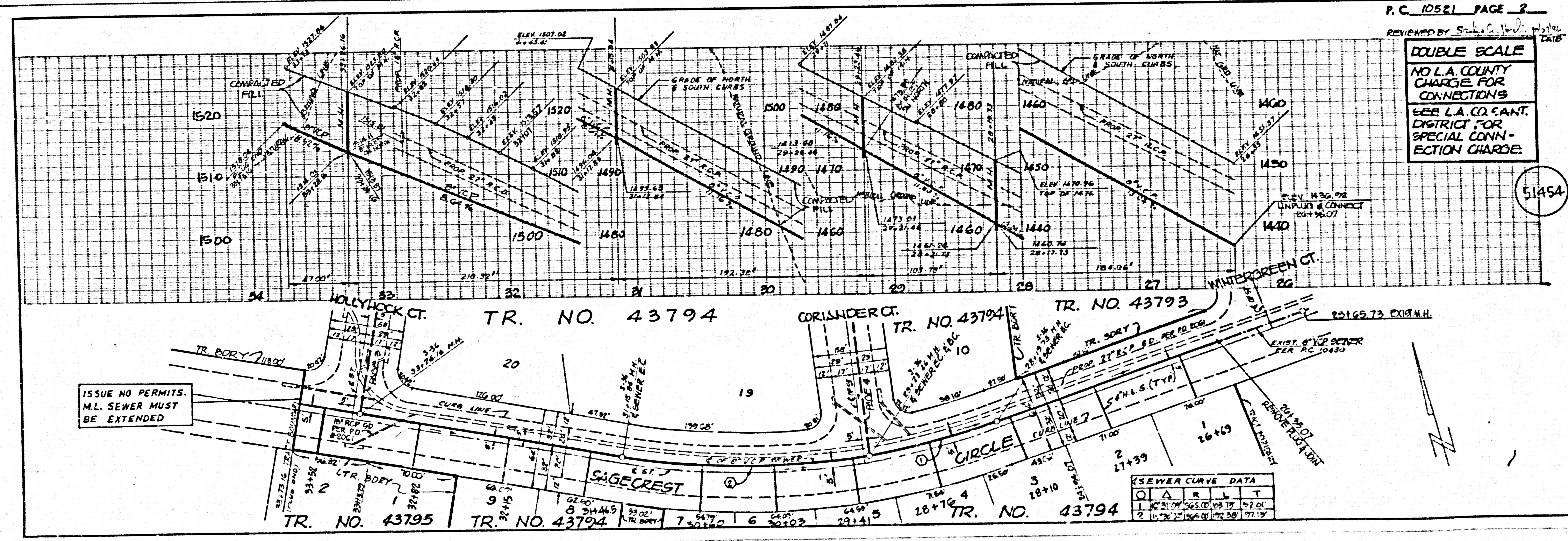
COUNTY OF LOS ANGELES, CALIFORNIA

THOMAS A. TIDEMANSON DIRECTOR OF PUBLIC WORKS

APPROVED: [Signature] DATE: 10/27/86

APPROVED: [Signature] DATE: 10/27/86

SANTA CLARITA VALLEY BLDG. DIST. 82



ISSUE NO PERMITS. M.L. SEWER MUST BE EXTENDED

SEWER CURVE DATA					
STATION	VERT. CURVE	PIVOT POINT	VERT. CURVE	PIVOT POINT	STATION
1	10'	1445.00	10'	1445.00	11
2	10'	1450.00	10'	1450.00	21

REVIEWED BY: [Signature] DATE:

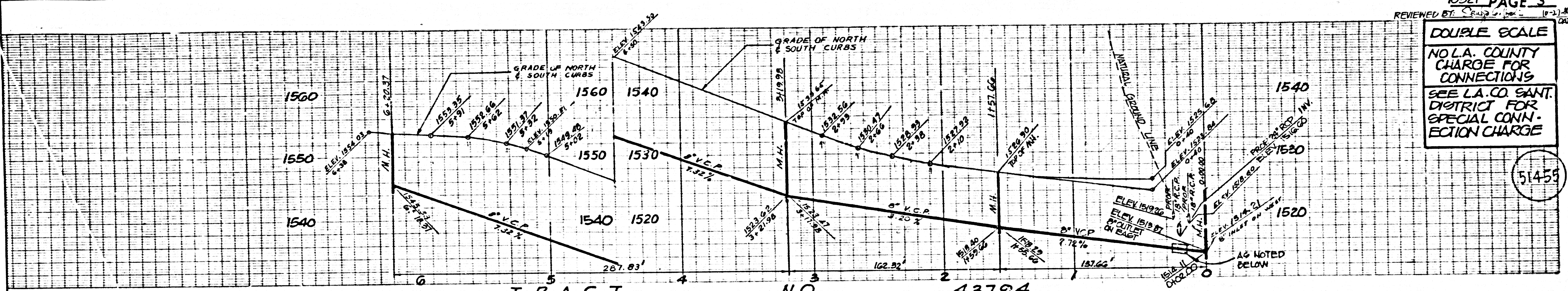
DOUBLE SCALE
 NO L.A. COUNTY CHARGE FOR CONNECTIONS
 SEE L.A. COUNTY DISTRICT FOR SPECIAL CONNECTION CHARGE

51454

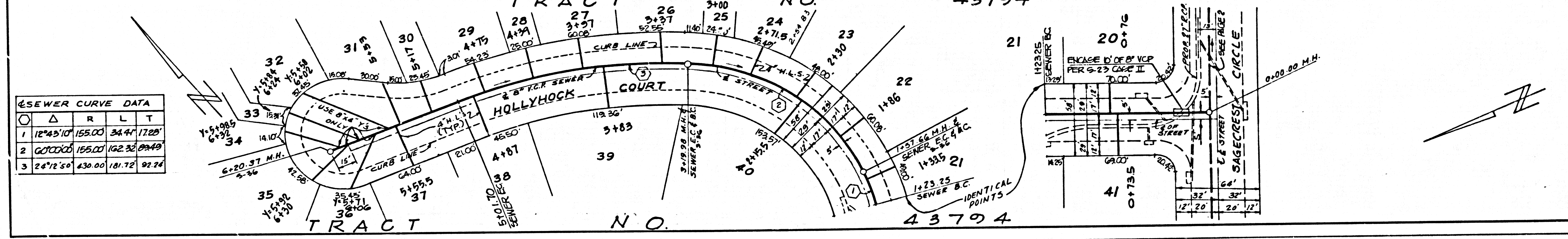
43794

PC 10521 1

DOUBLE SCALE
 NO L.A. COUNTY CHARGE FOR CONNECTIONS
 SEE L.A. CO. SANT. DISTRICT FOR SPECIAL CONNECTION CHARGE

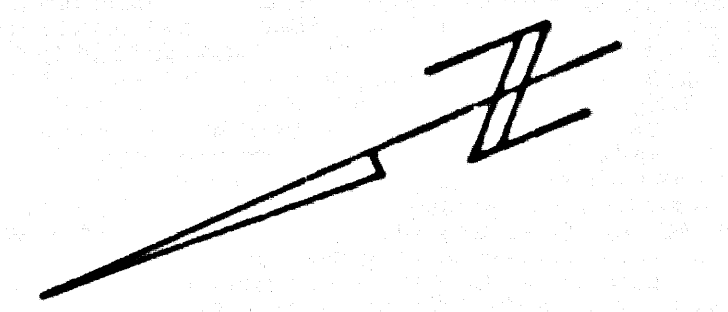


51455

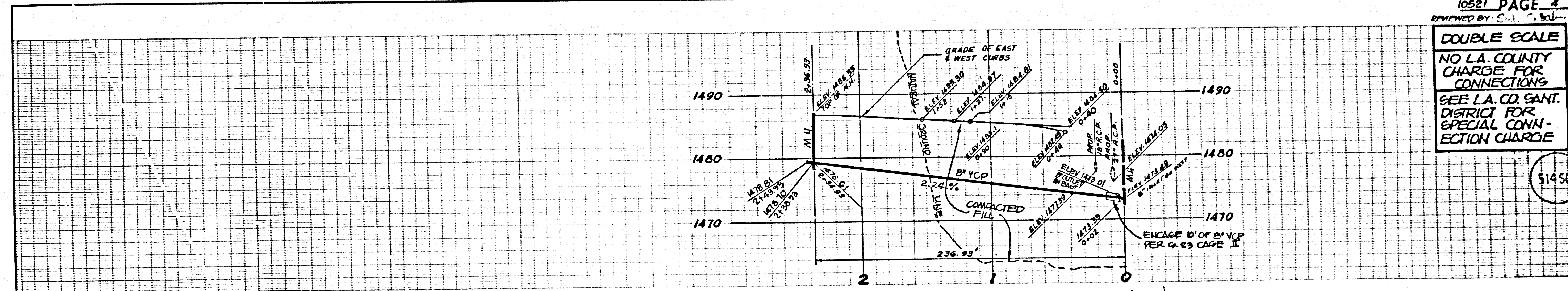


SEWER CURVE DATA

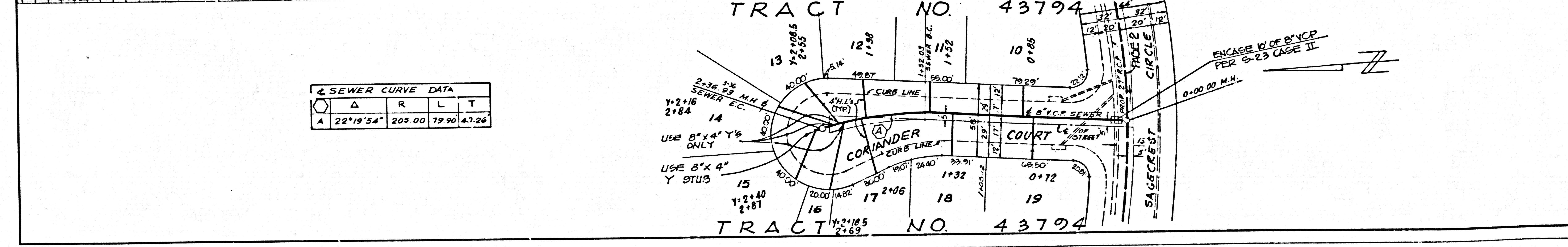
Δ	R	L	T	
1	18°43'10"	155.00	34.41	17.28
2	6°00'00"	155.00	102.32	69.49
3	26°12'50"	430.00	181.72	92.74



DOUBLE SCALE
 NO L.A. COUNTY CHARGE FOR CONNECTIONS
 SEE L.A. CO. SANT. DISTRICT FOR SPECIAL CONNECTION CHARGE



51456



SEWER CURVE DATA

Δ	R	L	T	
A	22°19'54"	203.00	79.90	41.26

