

B.M. F 489 ELEV. 2494.020
 DISK IN CONCRETE POST 92' N & 65'
 W. OF INT. AVE. N & 40TH ST. W.
 MARKED (F 489 1955).
 LANCASTER WEST QUAD. 1981.

DOUBLE SCALE

GENERAL NOTES:

1. ALL WORK SHALL BE DONE IN ACCORDANCE WITH THE SPECIFICATIONS OF THE COUNTY OF LOS ANGELES, CALIFORNIA, DIVISION OF PUBLIC WORKS, AND THE STANDARD SPECIFICATIONS FOR PUBLIC WORKS CONSTRUCTION, 1984 EDITION WITH SUPPLEMENTAL SPECIFICATIONS AND LATEST REVISIONS, SPECIAL PROVISIONS FOR THE CONSTRUCTION OF SANITARY SEWERS, 1984 EDITION, AND SHALL BE PROSECUTED ONLY IN THE PRESENCE OF THE SUPERVISOR OF PUBLIC WORKS.
2. THE CONTRACTOR SHALL BE RESPONSIBLE FOR OBTAINING ALL NECESSARY PERMITS FROM THE COUNTY OF LOS ANGELES, CALIFORNIA, DIVISION OF PUBLIC WORKS, AND THE SANITATION DISTRICTS FOR SAID CONNECTION.
3. APPROVAL OF THIS PLAN BY THE COUNTY OF LOS ANGELES DOES NOT CONSTITUTE A REPRESENTATION AS TO THE ACCURACY OF THE LOCATION OF OR THE EXISTENCE OR NON-EXISTENCE OF ANY UNDERGROUND UTILITY PIPES OR STRUCTURES WITHIN THE LIMITS OF THIS PROJECT. THE CONTRACTOR SHALL BE RESPONSIBLE FOR OBTAINING ALL NECESSARY PERMITS FROM THE COUNTY OF LOS ANGELES, CALIFORNIA, DIVISION OF PUBLIC WORKS, AND THE SANITATION DISTRICTS FOR SAID CONNECTION.
4. APPROVAL OF THIS PLAN BY THE COUNTY OF LOS ANGELES DOES NOT CONSTITUTE A REPRESENTATION AS TO THE ACCURACY OF THE LOCATION OF OR THE EXISTENCE OR NON-EXISTENCE OF ANY UNDERGROUND UTILITY PIPES OR STRUCTURES WITHIN THE LIMITS OF THIS PROJECT. THE CONTRACTOR SHALL BE RESPONSIBLE FOR OBTAINING ALL NECESSARY PERMITS FROM THE COUNTY OF LOS ANGELES, CALIFORNIA, DIVISION OF PUBLIC WORKS, AND THE SANITATION DISTRICTS FOR SAID CONNECTION.

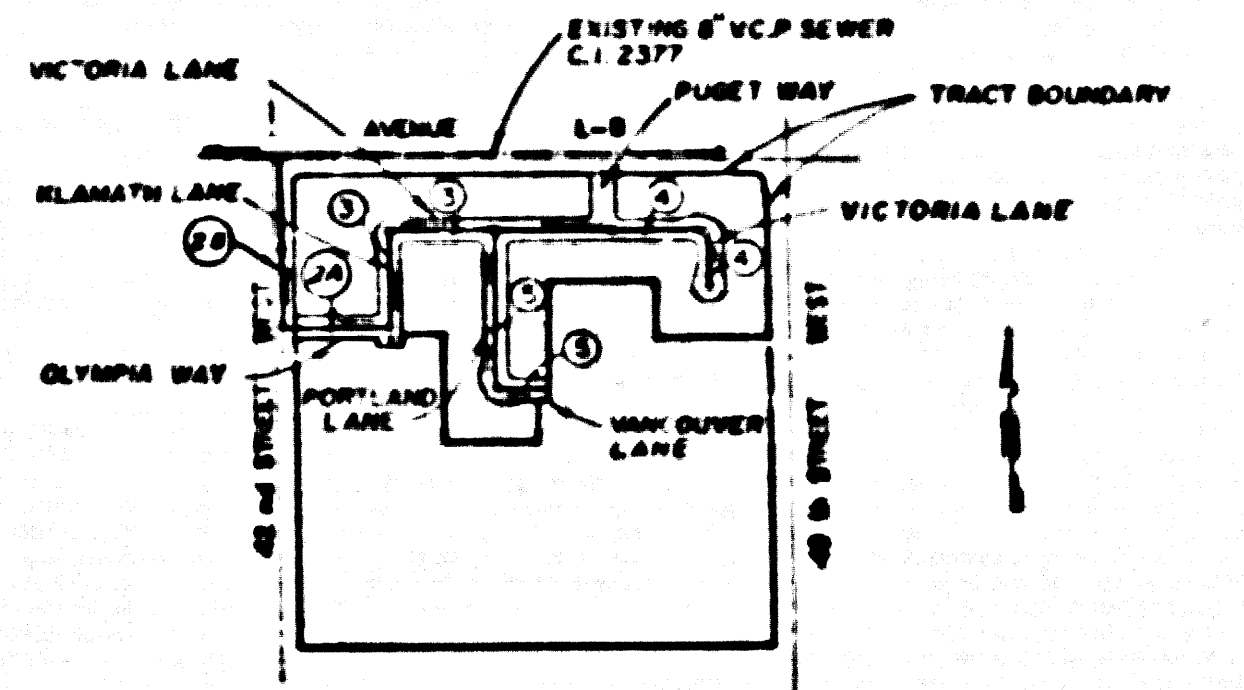
PROFILE, ALIGNMENT AND GRADE OF
SANITARY SEWERS
 TO BE CONSTRUCTED IN
TRACT NO. 44440
PRIVATE CONTRACT NO. 10523
 INDEX: A288, B-3
 3 SHEETS, 5 PAGES

SCALE: VERT. 1" = 8'
 HORIZ. 1" = 40'

APRIL 12, 1986

PREPARED IN THE OFFICES OF: A.S.L. Consulting Engineers
 2045 Tehuacan Boulevard
 Irvine, California 92614
 (714) 320-4220

REG. C.E. NO. 30435



INDEX MAP
 PC 10523 TR 44440
 SCALE 1" = 600'

1- NUMBERS IN CIRCLES
 INDICATE PAGE NUMBERS

2- PAGE 2 IS BUILT UNDER
 PC 10667

NO CONNECTION FOR THE DISPOSAL OF INDUSTRIAL WASTES SHALL BE MADE TO SEWERS SHOWN ON THESE DRAWINGS UNTIL A PERMIT FOR INDUSTRIAL WASTEWATER DISCHARGE HAS BEEN ISSUED BY THE SANITATION DISTRICTS FOR SAID CONNECTION.

BEFORE BREAKING INTO OR CONSTRUCTION ON A COUNTY SANITATION DISTRICT SEWER AND PRIOR TO FINAL ACCEPTANCE OF THE PROJECT, SANITATION DISTRICT INSPECTOR SHALL BE NOTIFIED BY PHONE (805) 947-5027 SO THAT REQUIRED INSPECTION CAN BE MADE.

THE FOLLOWING LATEST REVISIONS STANDARD PLANS ON FILE IN THE OFFICE OF THE DEPARTMENT OF PUBLIC WORKS SHALL APPLY TO THE CONSTRUCTION OF THIS PROJECT:

LEGEND	0-1
MINIMUM PUBLIC SAFETY REQUIREMENTS	0-2
BRICK MANHOLE	0-3
STANDARD MANHOLE STEP	0-17
REVISIONS FOR BRICK PIPE	0-21
CRACK AND REPAIRMENT	0-22
PIPE OR THE SUPPORT	0-23
ALLOWABLE TRENCH WIDTHS	0-24
LOADING MANHOLE FRAMES AND COVERS	0-25
NON-REINFORCED PRECAST CONCRETE MANHOLE	0-26
SEWER CONSTRUCTION IN VICINITY OF	0-27
PIPE SLOPE, HITCHES & BARS	0-28
RECTANGULAR SPALLS MANHOLE	0-29

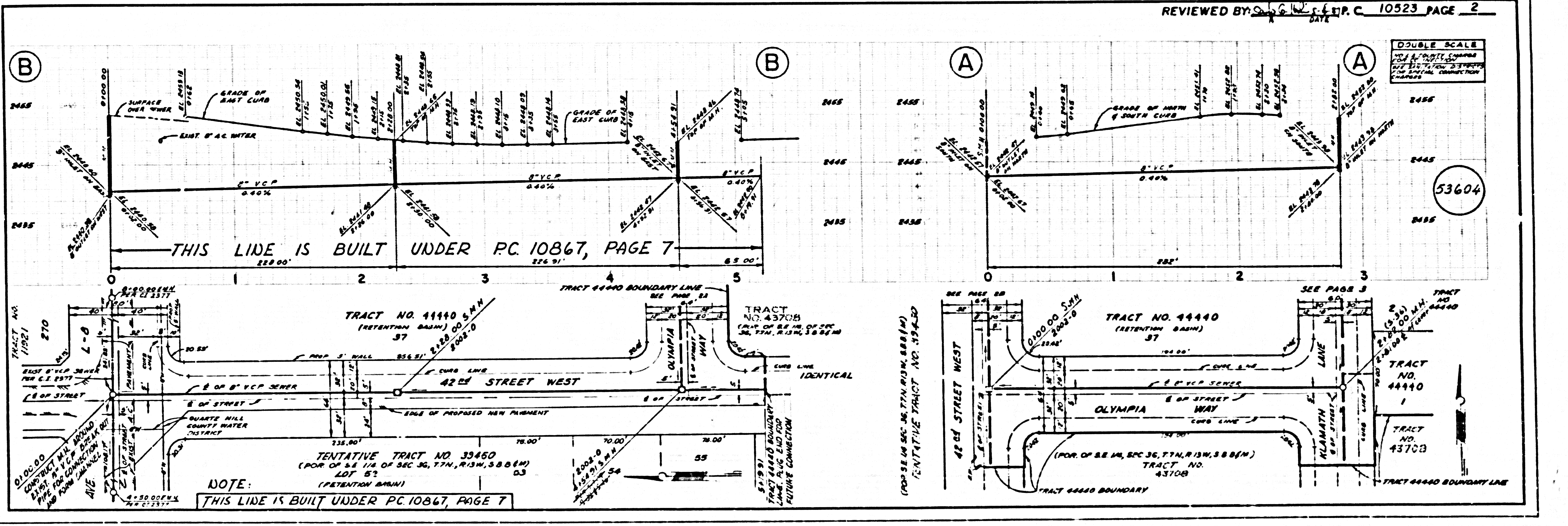
COUNTY OF LOS ANGELES, CALIFORNIA
 THOMAS A. TIDEMANSON
 DIRECTOR OF PUBLIC WORKS

CHARLES W. CARRY
 CHIEF ENGINEER

APPROVED: [Signature] 5/19/87
 APPROVED: [Signature] 11/15/87

CHECKED: [Signature] 5/19/87
 REG. C.E. NO. 10441

LANCASTER BLDG. DIST. 8



REVIEWED BY: [Signature] DATE: 5/19/87
 TR. C. 10523 PAGE 2

DOUBLE SCALE

CONSTRUCTION NOTES:

1. SEWERS SHALL BE CONSTRUCTED ACCORDING TO THE STANDARD SPECIFICATIONS FOR PUBLIC WORKS CONSTRUCTION, 1984 EDITION WITH SUPPLEMENTAL SPECIFICATIONS AND LATEST REVISIONS, SPECIAL PROVISIONS FOR THE CONSTRUCTION OF SANITARY SEWERS, 1984 EDITION, AND SHALL BE PROSECUTED ONLY IN THE PRESENCE OF THE SUPERVISOR OF PUBLIC WORKS.
2. THE CONTRACTOR SHALL BE RESPONSIBLE FOR OBTAINING ALL NECESSARY PERMITS FROM THE COUNTY OF LOS ANGELES, CALIFORNIA, DIVISION OF PUBLIC WORKS, AND THE SANITATION DISTRICTS FOR SAID CONNECTION.
3. APPROVAL OF THIS PLAN BY THE COUNTY OF LOS ANGELES DOES NOT CONSTITUTE A REPRESENTATION AS TO THE ACCURACY OF THE LOCATION OF OR THE EXISTENCE OR NON-EXISTENCE OF ANY UNDERGROUND UTILITY PIPES OR STRUCTURES WITHIN THE LIMITS OF THIS PROJECT. THE CONTRACTOR SHALL BE RESPONSIBLE FOR OBTAINING ALL NECESSARY PERMITS FROM THE COUNTY OF LOS ANGELES, CALIFORNIA, DIVISION OF PUBLIC WORKS, AND THE SANITATION DISTRICTS FOR SAID CONNECTION.
4. APPROVAL OF THIS PLAN BY THE COUNTY OF LOS ANGELES DOES NOT CONSTITUTE A REPRESENTATION AS TO THE ACCURACY OF THE LOCATION OF OR THE EXISTENCE OR NON-EXISTENCE OF ANY UNDERGROUND UTILITY PIPES OR STRUCTURES WITHIN THE LIMITS OF THIS PROJECT. THE CONTRACTOR SHALL BE RESPONSIBLE FOR OBTAINING ALL NECESSARY PERMITS FROM THE COUNTY OF LOS ANGELES, CALIFORNIA, DIVISION OF PUBLIC WORKS, AND THE SANITATION DISTRICTS FOR SAID CONNECTION.

THE FOLLOWING LATEST REVISIONS STANDARD PLANS ON FILE IN THE OFFICE OF THE DEPARTMENT OF PUBLIC WORKS SHALL APPLY TO THE CONSTRUCTION OF THIS PROJECT:

LEGEND	0-1
MINIMUM PUBLIC SAFETY REQUIREMENTS	0-2
BRICK MANHOLE	0-3
STANDARD MANHOLE STEP	0-17
REVISIONS FOR BRICK PIPE	0-21
CRACK AND REPAIRMENT	0-22
PIPE OR THE SUPPORT	0-23
ALLOWABLE TRENCH WIDTHS	0-24
LOADING MANHOLE FRAMES AND COVERS	0-25
NON-REINFORCED PRECAST CONCRETE MANHOLE	0-26
SEWER CONSTRUCTION IN VICINITY OF	0-27
PIPE SLOPE, HITCHES & BARS	0-28
RECTANGULAR SPALLS MANHOLE	0-29

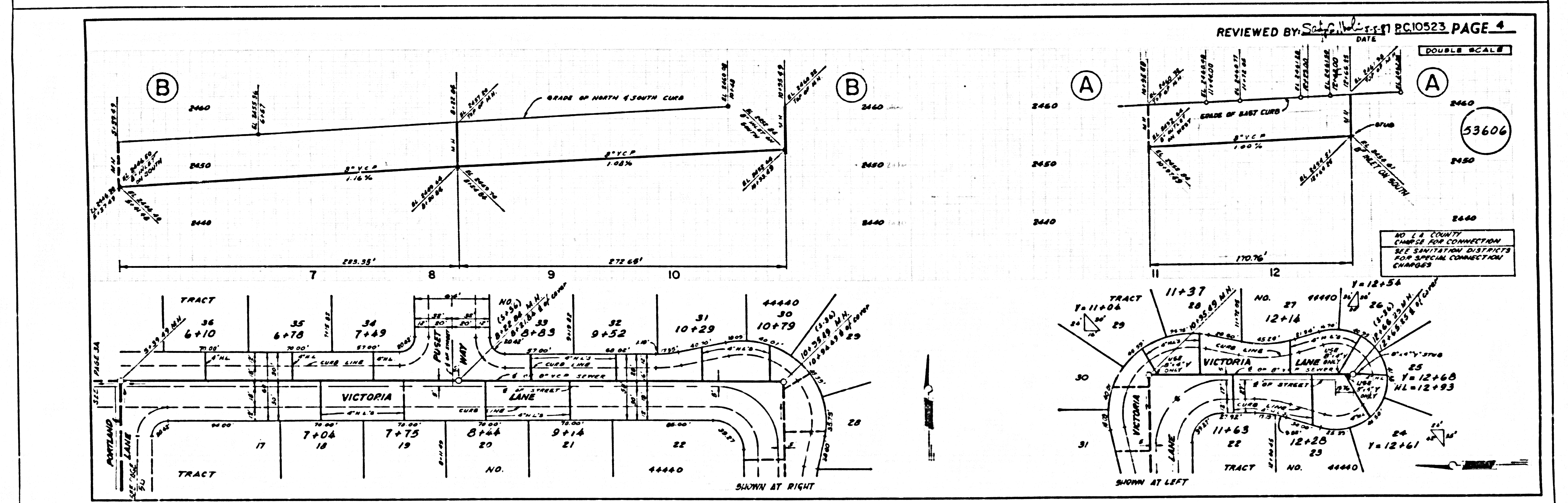
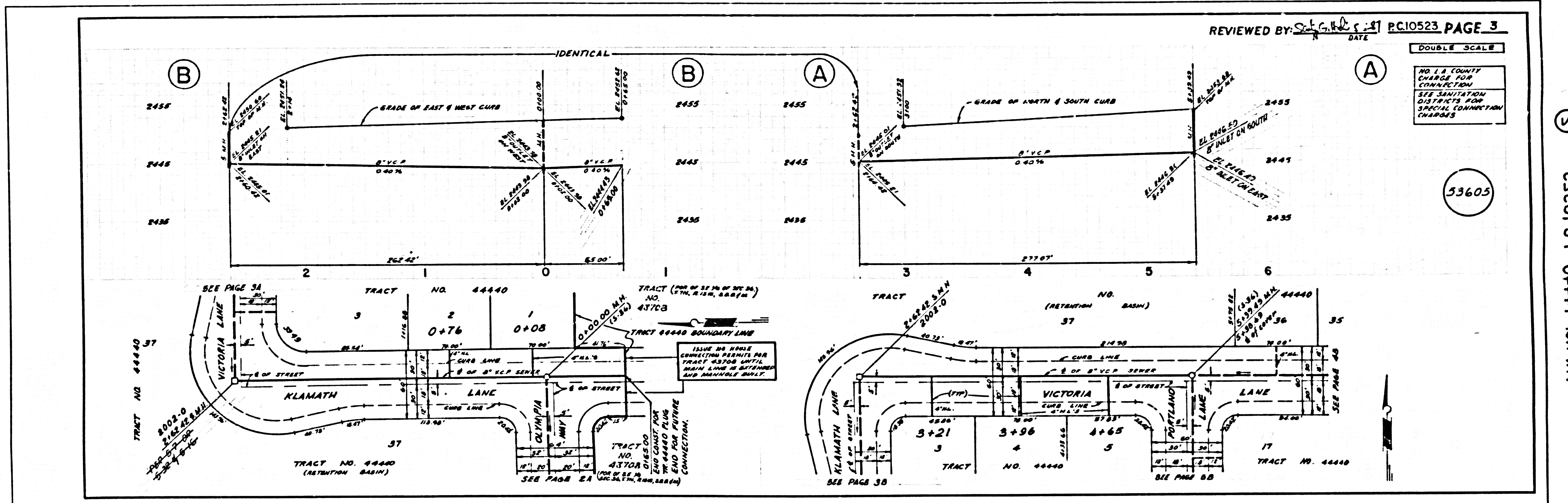
COUNTY OF LOS ANGELES, CALIFORNIA
 THOMAS A. TIDEMANSON
 DIRECTOR OF PUBLIC WORKS

CHARLES W. CARRY
 CHIEF ENGINEER

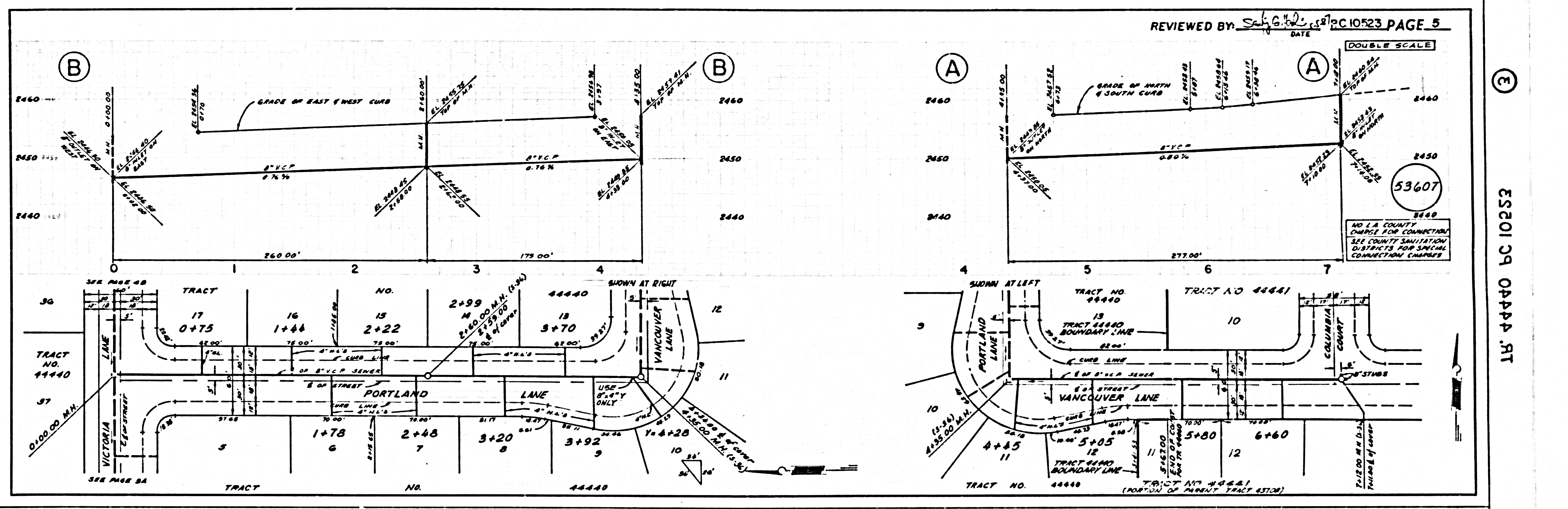
APPROVED: [Signature] 5/19/87
 APPROVED: [Signature] 11/15/87

CHECKED: [Signature] 5/19/87
 REG. C.E. NO. 10441

LANCASTER BLDG. DIST. 8



ES201 09 04444 OM .AT



TR. 10444 PC 10252

L.A. COUNTY PUBLIC WORKS DEPT. 512 2/13/50-5040