

B.M. L.A.C.R.D. ELEV. 1281.052
CL 4233
RD. AM. TRS. IN N.C.B. McBEAN PKWY
42' N.E. 136 FT. W/O INT. SINGING HILLS RD. TO S.
NEWHILL QUAD. 19 87

DOUBLE SCALE

REVISION NO. 1 DATE: 9-10-87
PAGE 1: REVISED INDEX MAP
PAGE 3: RELOCATED M.H. @ 3+82.70 ON PLAN
RELOCATED M.H. @ 12+30.55 ON PLAN & PROFILE
REVISED & SEWER CURVE DATA.
PAGE 4: RELOCATED M.H. 12+30.55 ON PLAN & PROFILE
ADDED M.H. @ 15+26.14 ON PLAN & PROFILE
RELOCATED M.H. @ 17+61.14 ON PLAN & PROFILE
REVISED & SEWER CURVE DATA.
APPROVED BY: *Sanjay G. Haldar* 9-14-87
OFFICE OF THE DIRECTOR OF PUBLIC WORKS

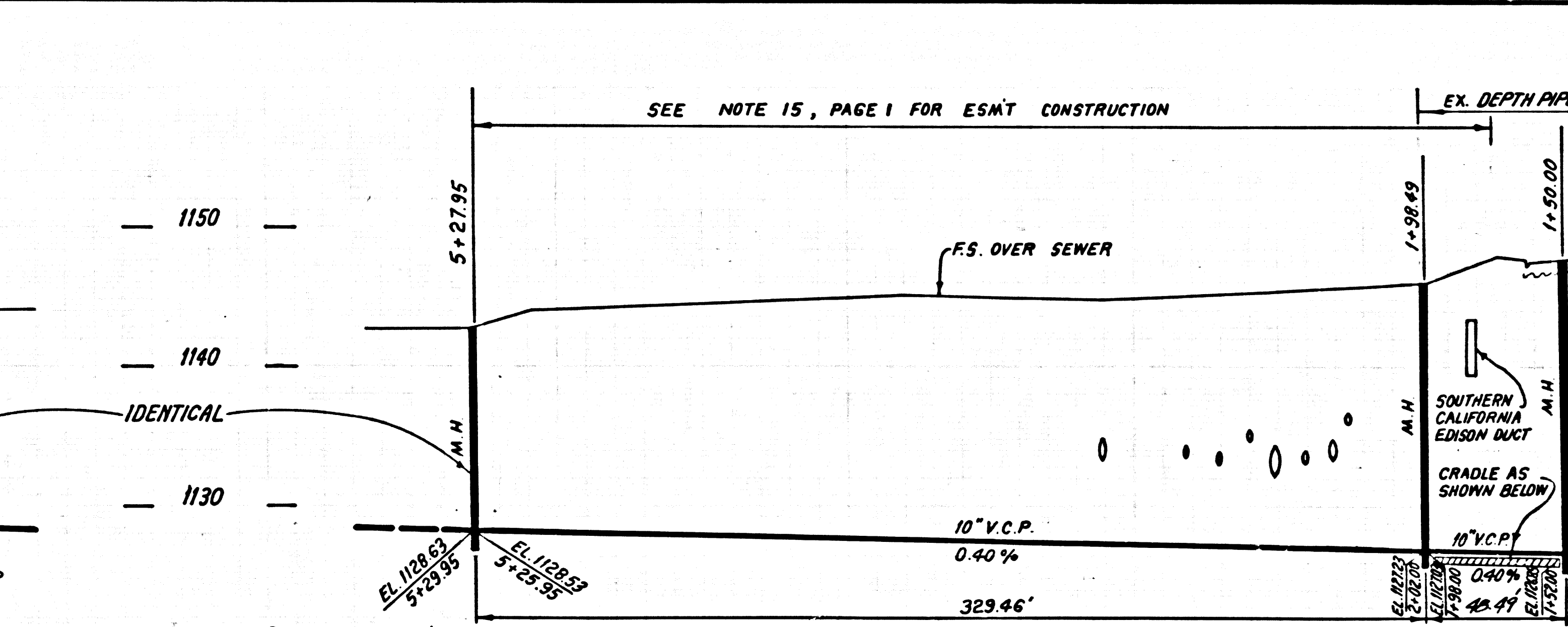
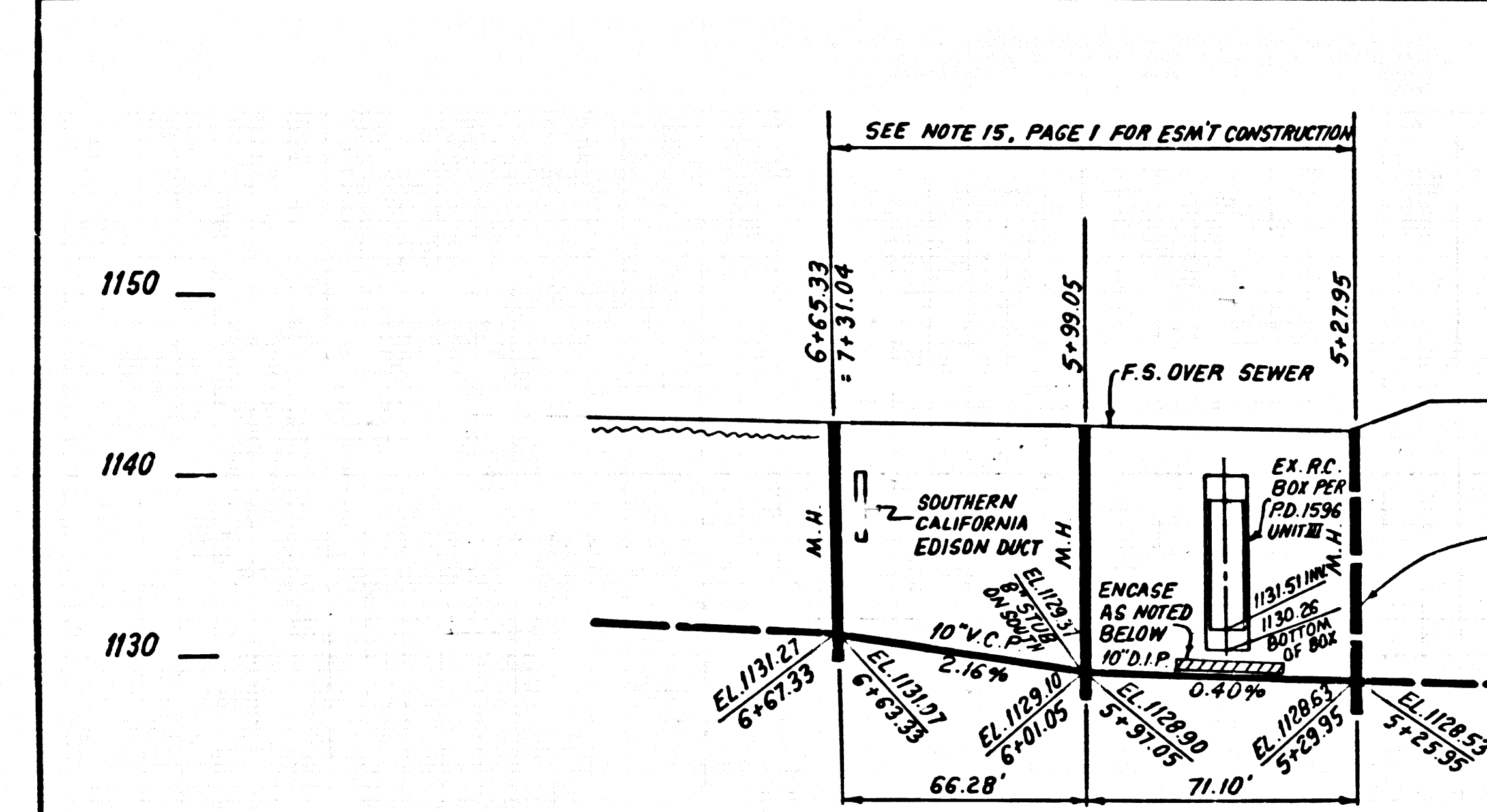
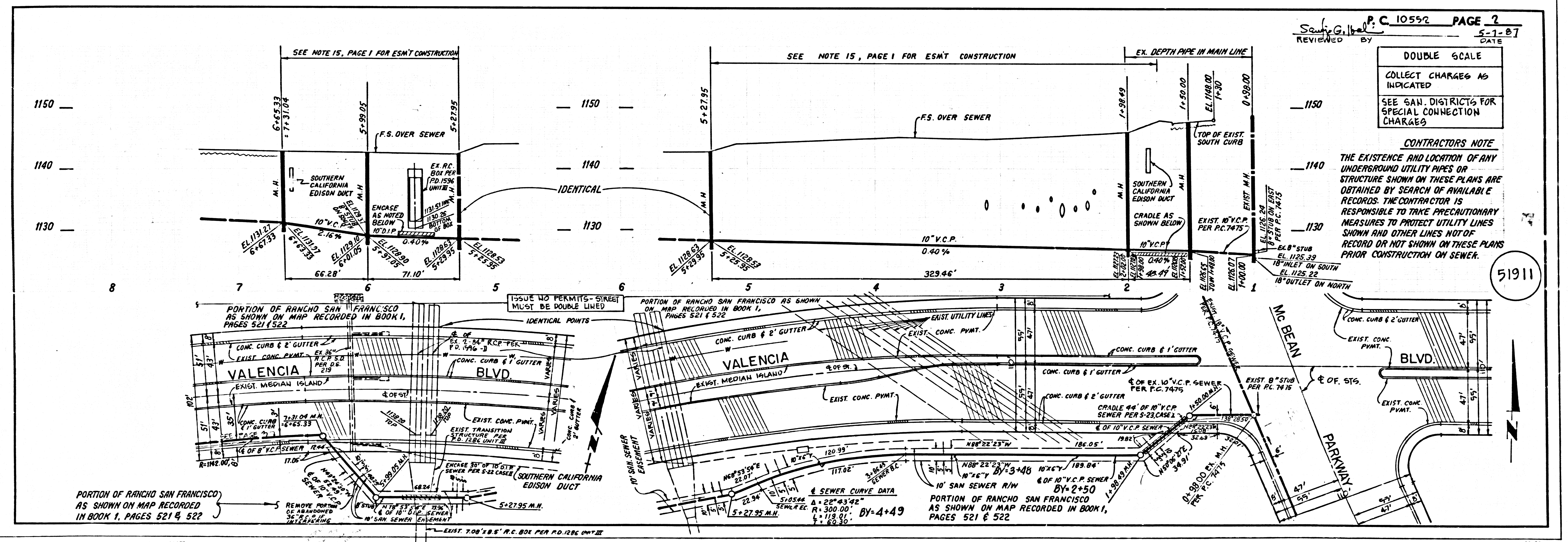
REVISION NO. 2 DATE: 10-5-87
PAGE 1: REVISED INDEX MAP
PAGE 2: REVISED HORIZ. & VERT. ALIGNMENT OF
SEWER FROM STA. 1+50.00 TO 7+31.04
ADDED M.H. AT STA. 1+58.43 & 5+33.05
MOVED M.H. AT STA. 3+29.42, 5+11.83 &
6+78.98
APPROVED BY: *Sanjay G. Haldar* 10-14-87
OFFICE OF THE DIRECTOR OF PUBLIC WORKS

- GENERAL NOTES:
- ELEVATIONS ARE IN FEET ABOVE U.S.C. & G.S. SEA LEVEL DATUM OF 1929
 - NO REVISIONS SHALL BE MADE IN THESE PLANS WITHOUT THE APPROVAL OF THE DEPARTMENT OF PUBLIC WORKS
 - NO REPRESENTATIVE OF THE DEPARTMENT OF PUBLIC WORKS WILL SURVEY OR LAY OUT ANY PORTION OF THE WORK
 - GRADES TO WHICH THIS IMPROVEMENT IS TO BE CONSTRUCTED ARE SHOWN ON PLANS AND PROFILES. GRADE POINTS FOR TOP OF CURBS, CENTER LINE OF STREETS OR CENTER LINE OF ALLEYS ARE SHOWN BY CIRCLES ON PROFILES. STALL POINTS AT THE DESIGNATED POINTS THE GRADE SHALL BE ESTABLISHED SO AS TO CONFORM TO A STRAIGHT LINE DRAWN BETWEEN SAID DESIGNATED POINTS
 - THE PRIVATE ENGINEER SHALL FURNISH THE DEPARTMENT OF PUBLIC WORKS WITH GRADE SHEETS AND STATIONING FOR ALL HOUSE LATERALS AND "T" OR "Y" BRANCHES AND SHALL PROVIDE STAKES FOR THEM AT THEIR PROPER LOCATIONS WITH STATIONING PLAINLY MARKED. ALL HOUSE LATERALS SHALL BE CONSTRUCTED IN A STRAIGHT ALIGNMENT AT RIGHT ANGLES FROM THE MAIN LINE SEWER EXCEPT AS SHOWN ON THE PLANS. HOUSE LATERALS FROM CHIMNEYS SHALL NOT HAVE AN ANGLE OF LESS THAN 45° WITH THE MAIN LINE SEWER. ANY CHANGE IN ALIGNMENT SHALL BE REQUESTED IN WRITING BY THE PRIVATE ENGINEER
 - THE PRIVATE ENGINEER SHALL FURNISH THE HOUSE LATERAL DEPTH AT THE PROPERTY LINE BELOW THE TOP OF CURB ELEVATION FOR EACH HOUSE LATERAL ON THE GRADE SHEET
 - BEFORE WORK CAN BE STARTED, THE CONTRACTOR MUST OBTAIN A PERMIT TO EXCAVATE IN COUNTY STREETS FROM THE L.A. COUNTY ENGINEER. PERMITS OFFICE NO. CG, AND PAY A FEE TO THE ENGINEER OF PUBLIC WORKS \$250 ALLEGAS. 96. LOS ANGELES CA 90038 TO COVER THE COST OF CONSTRUCTION INSPECTION AND RECORD PLANS
 - IF WORK IS TO BE DONE IN A STATE HIGHWAY A PERMIT MUST BE OBTAINED FROM THE STATE OF CALIFORNIA DIVISION OF HIGHWAYS, 120 SOUTH SPRING STREET, LOS ANGELES, CALIFORNIA
 - APPROVAL OF THE PLAN BY THE COUNTY OF LOS ANGELES DOES NOT CONSTITUTE A REPRESENTATION AS TO THE ACCURACY OF THE LOCATION OF OR THE EXISTENCE OR NON-EXISTENCE OF ANY UNDERGROUND UTILITY PIPE, OR STRUCTURE WITHIN THE LIMITS OF THIS PROJECT. THIS NOTE APPLIES TO ALL PROJECTS
 - REFER TO SECTION 164.1 OF THE STANDARD SPECIFICATIONS, REGARDING SAFETY CONES
 - PRIOR TO THE ISSUANCE OF THE REQUIRED SEWER CONSTRUCTION PERMIT, THE CONTRACTOR SHALL OBTAIN AND FILE WITH THE DEPARTMENT OF PUBLIC WORKS COPIES OF A PERMIT TO EXCAVATE IN COUNTY STREETS FROM THE COUNTY ENGINEER. PERMITS OFFICE NO. CG, AND PAY A FEE TO THE ENGINEER OF PUBLIC WORKS \$250 ALLEGAS. 96. LOS ANGELES CA 90038 TO COVER THE COST OF CONSTRUCTION INSPECTION AND RECORD PLANS
 - A CERTIFICATE OF WORKER COMPENSATION INSURANCE WITH THE DEPARTMENT OF PUBLIC WORKS \$250 ALLEGAS. 96. LOS ANGELES CA 90038 SHALL BE OBTAINED BY THE CONTRACTOR AS THE CERTIFICATE HOLDER TO BE NOTIFIED 30 DAYS PRIOR TO CANCELLATION OF POLICY

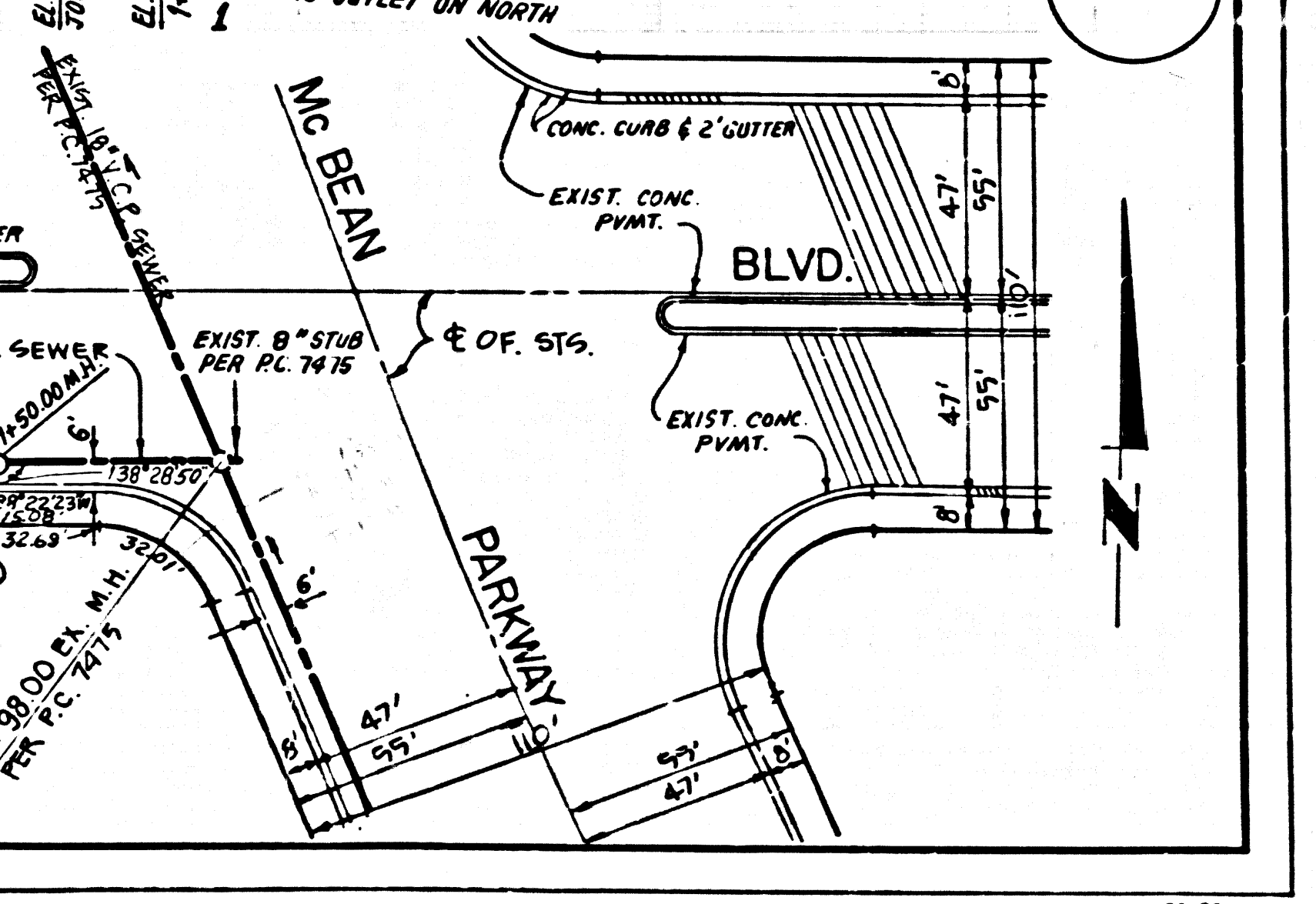
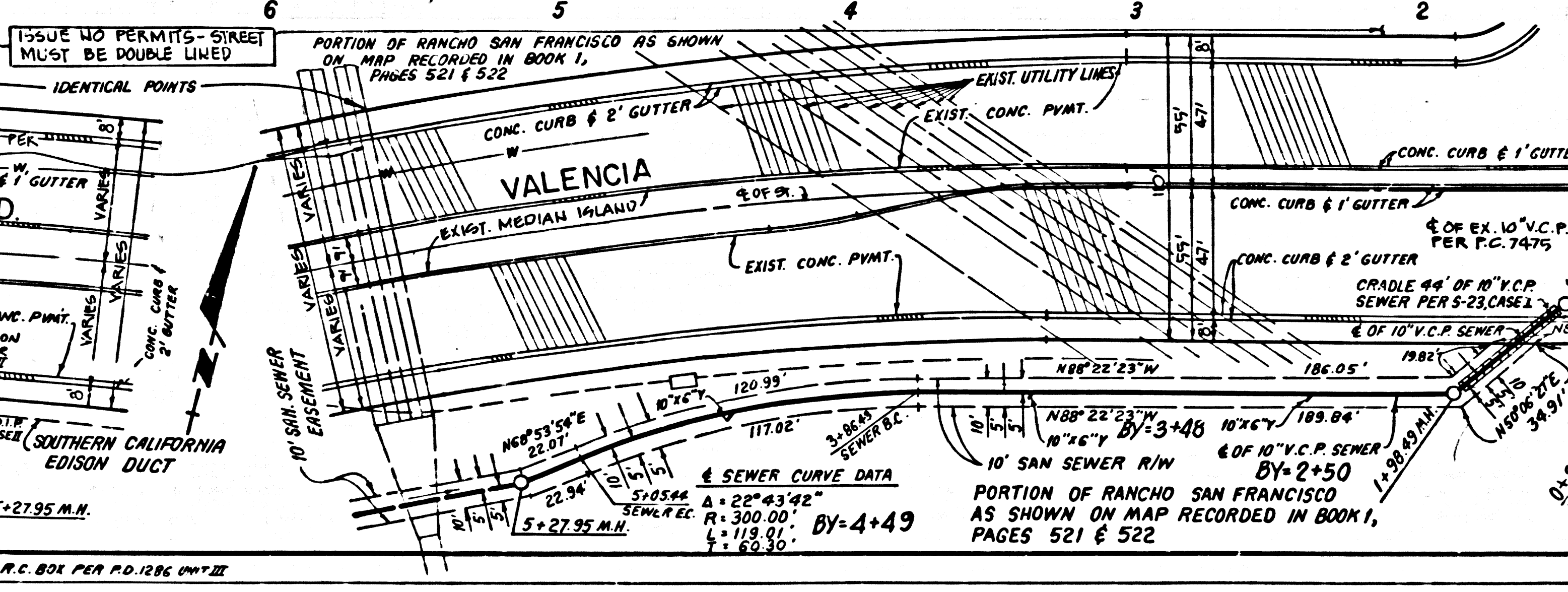
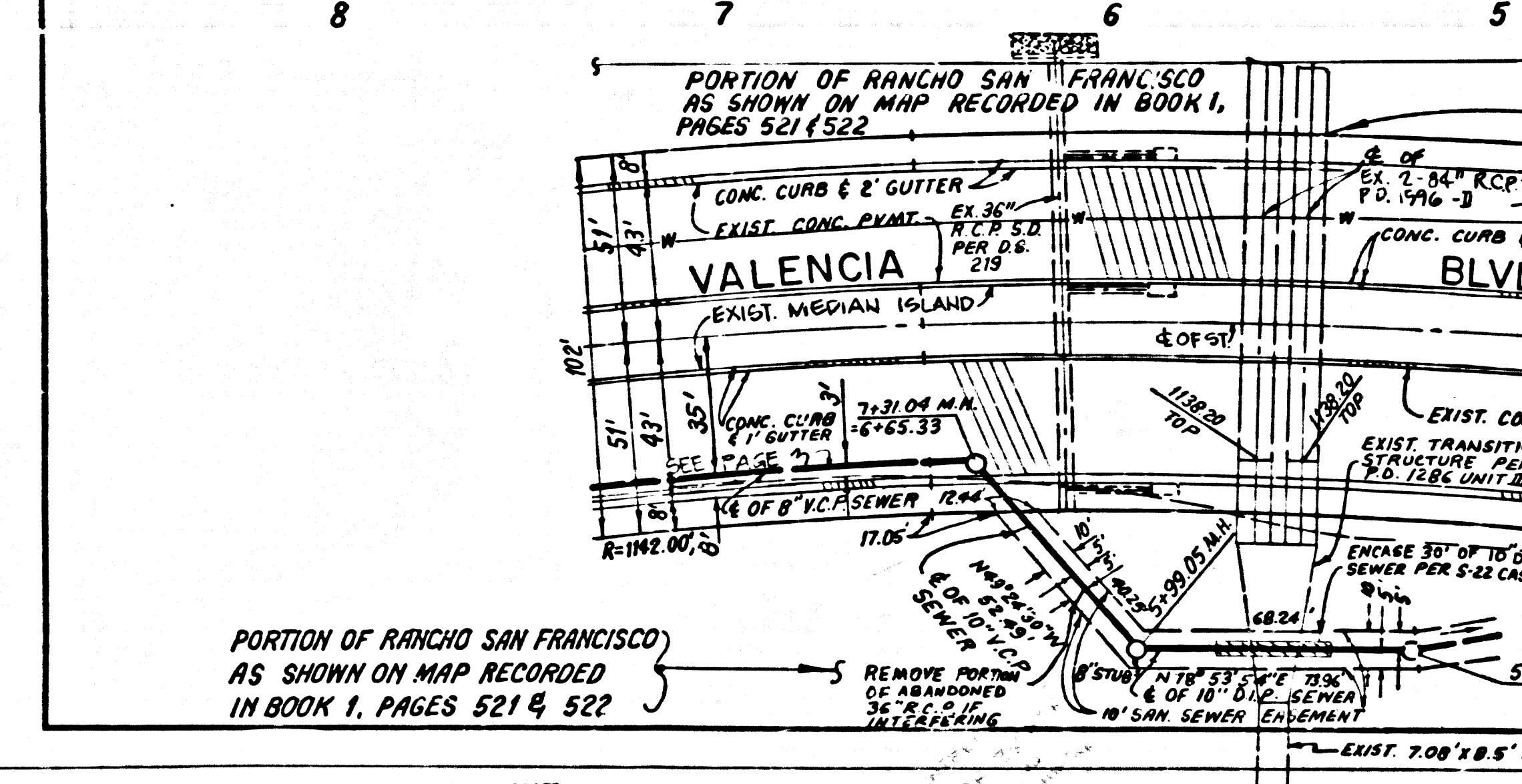
- CONSTRUCTION NOTES:
- WORK SHALL BE CONSTRUCTED ACCORDING TO THE STANDARD SPECIFICATIONS FOR PUBLIC UTILITIES CONSTRUCTION (SECTION 106) WITH ALL SUPPLEMENTS AND COUNTY ENGINEER SPECIAL PROVISIONS FOR THE CONSTRUCTION OF SANITARY SEWERS DATED 10-1-87
 - THE CONTRACTOR SHALL NOTIFY THE ENVIRONMENTAL SERVICES BY TELEPHONE 798-5714 AT LEAST TWENTY-FOUR HOURS BEFORE STARTING ANY WORK UNDER THIS CONTRACT
 - HOUSE LATERALS TO BE CONSTRUCTED WITH INVERTS AT PROPERTY LINE 8 FEET BELOW CURB GRADE EXCEPT AS NOTED
 - WYE OR TEE BRANCHES MAY BE USED FOR CONNECTIONS TO MAINLINE SEWERS EXCEPT AS NOTED
 - ALL STRUCTURES SHALL BE EITHER BRICK MANHOLES PER 5-3 OR PRECAST CONCRETE MANHOLES PER 5-26 EXCEPT AS NOTED
 - PROVIDE STAKES ON THE PROPERTY LINE OR PROPERTY LINES PRODUCED AT RIGHT ANGLES TO THE SEWER LINE AT THE CENTER LINE OF EACH MANHOLE
 - MANHOLE TOPS IN UNIMPROVED RIGHTS OF WAY TO BE SIX INCHES ABOVE FINISHED GRADE
 - VITRIFIED CLAY PIPE JOINTS SHALL BE TYPE "D" OR "D" PER STANDARD SPECIFICATIONS SECTION 209-2
 - IF A MANHOLE IS WITHIN THREE FEET OF THE SEWER THE SEWER SHALL BE ENCASED PER 5-23 CASE 11 "FOOTING EACH SIDE FROM THE POINT OF INTERFERENCE"
 - IF DURING THE COURSE OF CONSTRUCTION IT IS DETERMINED THAT THERE IS LESS THAN FOUR FEET OF COVER OVER THE TOP OF A MAIN LINE OR HOUSE LATERAL SEWER WHICH IS NOT INDICATED ON THE PLANS THE PIPE SHALL BE ENCASED PER 5-23 CASE II UNLESS OTHERWISE APPROVED BY THE DEPARTMENT OF PUBLIC WORKS
 - ALL JOINTS BETWEEN CAST IRON PIPE AND VITRIFIED CLAY PIPE SHALL BE MADE WITH A RUBBER SLEEVE JOINT. TYPE "D" OR "D" (WITH RUBBER) IS NECESSARY PER STANDARD SPECIFICATIONS SECTION 209-2
 - SEWERS TO BE TESTED FOR LEAKAGE PER SECTION 206-4 OF THE STANDARD SPECIFICATIONS AND SPECIAL PROVISIONS
 - RESURFACE ALL TRENCHES WITHIN PAVED AREAS TO MEET L.A. COUNTY ROAD DEPT. OR CALIFORNIA STATE HIGHWAY REQUIREMENTS IN ACCORDANCE WITH PERMITS
 - ALL COMPACTANCE WITH SECTION 206-1.3 OF THE STANDARD SPEC. WILL BE REQUIRED FOR BACKFILL WITH STREET CERTIFICATION OF BACKFILL COMPACTION AND SAND EQUIVALENTS BY A QUALIFIED REGISTERED TESTING LABORATORY SHALL BE PROVIDED BY THE PERMITTEE PRIOR TO THE ISSUANCE OF A CERTIFICATE OF PARTIAL ACCEPTANCE
 - SPECIAL BACKFILL IN EXISTING TRENCHES IN BACKFILL TRENCH AND REPLACE OTHER EARTH SO AS TO ACHIEVE THE NATURAL OR FINISHED GRADES AND SLOPE SHOWN ON THE GRADING PLAN APPROVED FOR THIS DEVELOPMENT BY THE L.A. COUNTY ENGINEER PRIOR TO ALL BACKFILL AND EARTH REPAIRS SHALL BE COMPACTED TO A MINIMUM OF 90% OF MAXIMUM DENSITY PER A.T. 7-1.511 METHOD OR TEST THEREIN AS MODIFIED ACCEPTABLE CERTIFICATION OF SUCH COMPACTION SHALL BE SUBMITTED TO CONSTRUCTION DIVISION, PUBLIC WORKS DEPT.

PROFILE ALIGNMENT AND GRADE OF
SANITARY SEWERS
TO BE CONSTRUCTED IN
TRACT NO. 44416
PRIVATE CONTRACT NO. 10552
A-47
8 SHEETS; 15 PAGES (5190)
SCALE: VERT. 1" = 8'
HORIZ. 1" = 40' JULY, 1986
PREPARED IN THE OFFICES OF
SHAW ENGINEERING ASSOCIATES
15530 BURBANK BLVD. VAN NUYS, CALIF. 91411, (818) 787-0550
BY: *Ronald W. Hahn*
REG. CE NO. 14612

COUNTY OF LOS ANGELES, CALIFORNIA
THOMAS A. TIDEMANSON
DIRECTOR OF PUBLIC WORKS
APPROVED: *Carl J. Sorenson* 5/18/87 (DATE)
CHECKED: *[Signature]* 5/18/87 (DATE)
REG. CE NO. 10847
CHAS. W. CARRY
CHIEF ENGINEER
CO. SALES NO. 1082
APPROVED: *[Signature]* 5/18/87 (DATE)
OFFICE ENGINEER
SANTA CLARITA VALLEY BLDG. DIST. 8.9

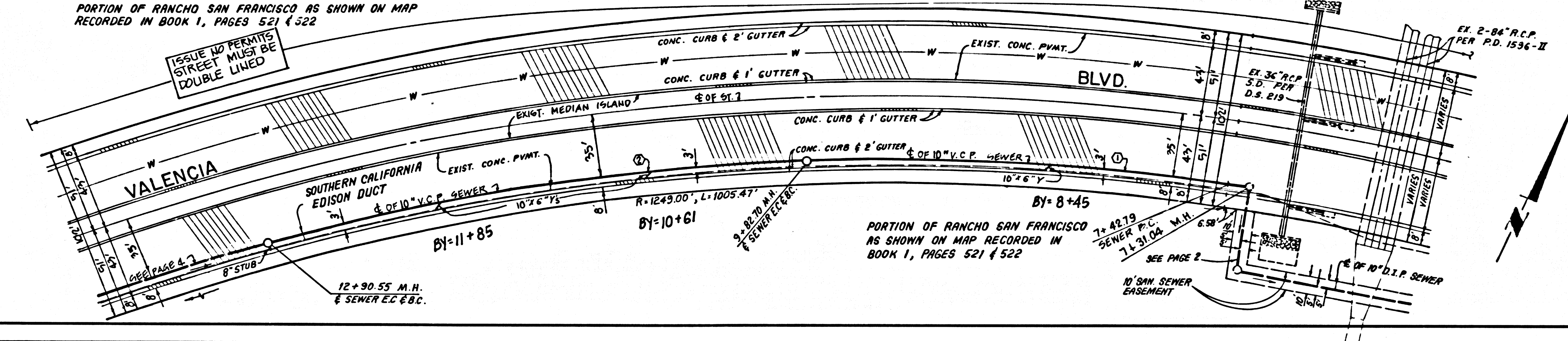
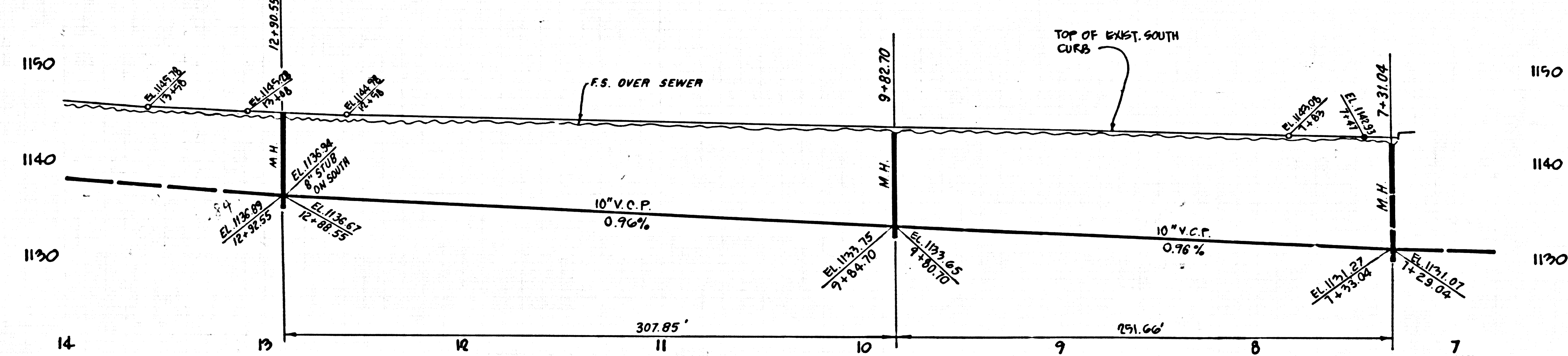


P.C. 10552 PAGE 2
REVIEWED BY: *Sanjay G. Haldar* 5-1-87
DATE: 5-1-87
DOUBLE SCALE
COLLECT CHARGES AS INDICATED
SEE SAN. DISTRICT FOR SPECIAL CONNECTION CHARGES
CONTRACTORS NOTE
THE EXISTENCE AND LOCATION OF ANY UNDERGROUND UTILITY PIPES OR STRUCTURE SHOWN ON THESE PLANS ARE OBTAINED BY SEARCH OF AVAILABLE RECORDS. THE CONTRACTOR IS RESPONSIBLE TO TAKE PRECAUTIONARY MEASURES TO PROTECT UTILITY LINES SHOWN AND OTHER LINES NOT OF RECORD OR NOT SHOWN ON THESE PLANS PRIOR TO CONSTRUCTION ON SEWER.



CONTRACTOR'S NOTE
 THE EXISTENCE AND LOCATION OF ANY UNDERGROUND UTILITY PIPES OR STRUCTURE SHOWN ON THESE PLANS ARE OBTAINED BY SEARCH OF AVAILABLE RECORDS. THE CONTRACTOR IS RESPONSIBLE TO TAKE PRECAUTIONARY MEASURES TO PROTECT UTILITY LINES SHOWN AND OTHER LINES NOT OF RECORD OR NOT SHOWN ON THESE PLANS PRIOR CONSTRUCTION ON SEWER.

SEWER CURVE DATA				
Δ	R	L	T	
1	10° 31' 59"	1265.00'	239.91'	120.32'
2	13° 56' 37"	1265.00'	307.85'	154.63'

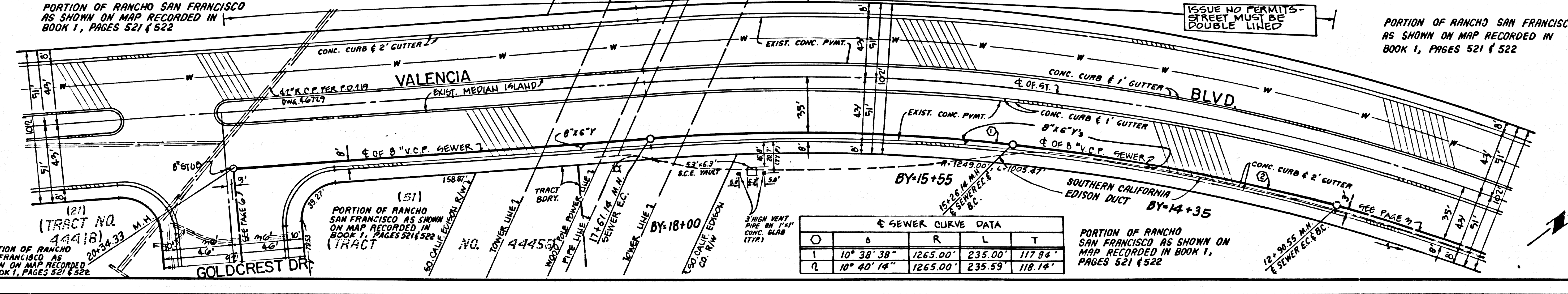
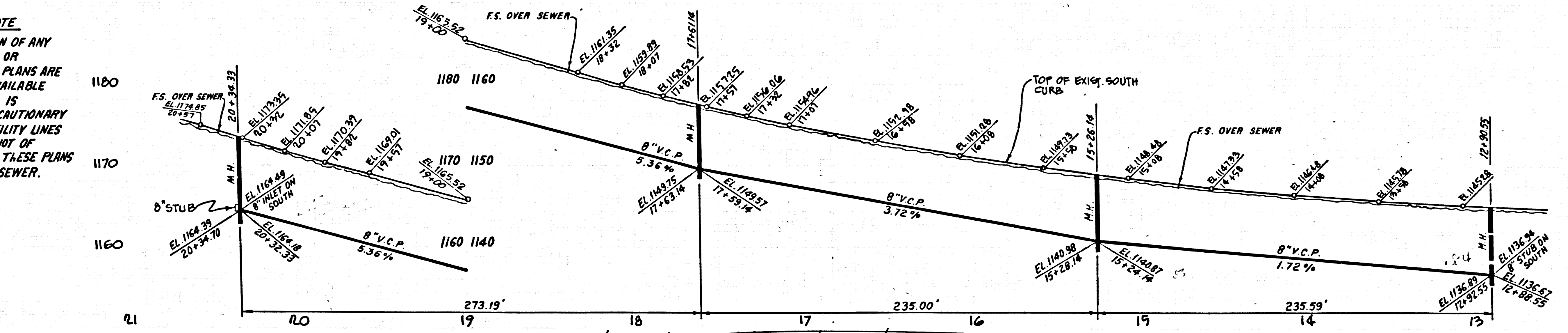


Reviewed: **Slack, G. 11/20/07** BY: **DATE: 11-20-07**
P.C. 10552 PAGE 3
 DOUBLE SCALE
 COLLECT CHARGES AS INDICATED
 SEE SAN. DISTRICTS FOR SPECIAL CONNECTION CHARGES

51912

52201.C.9.1444 ON T/CART

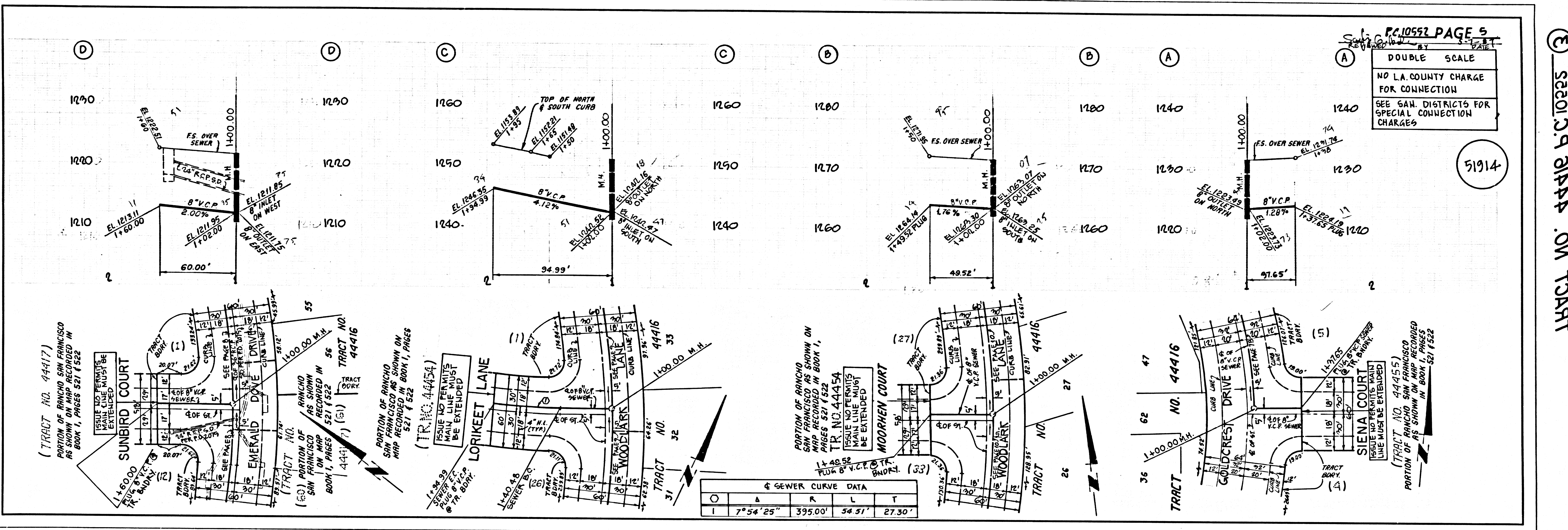
CONTRACTOR'S NOTE
 THE EXISTENCE AND LOCATION OF ANY UNDERGROUND UTILITY PIPES OR STRUCTURE SHOWN ON THESE PLANS ARE OBTAINED BY SEARCH OF AVAILABLE RECORDS. THE CONTRACTOR IS RESPONSIBLE TO TAKE PRECAUTIONARY MEASURES TO PROTECT UTILITY LINES SHOWN AND OTHER LINES NOT OF RECORD OR NOT SHOWN ON THESE PLANS PRIOR CONSTRUCTION ON SEWER.



SEWER CURVE DATA				
Δ	R	L	T	
1	10° 38' 38"	1265.00'	235.00'	117.84'
2	10° 40' 14"	1265.00'	235.59'	118.14'

Reviewed: **Slack, G. 11/20/07** BY: **DATE: 11-20-07**
P.C. 10552 PAGE 4
 DOUBLE SCALE
 COLLECT CHARGES AS INDICATED
 SEE SAN. DISTRICTS FOR SPECIAL CONNECTION CHARGES

51913



P. 10552 PAGE 5
 DOUBLE SCALE
 NO L.A. COUNTY CHARGE FOR CONNECTION
 SEE SAN. DISTRICTS FOR SPECIAL CONNECTION CHARGES

51914

TRACT NO. 44417
 SUNBIRD COURT
 (TRACT NO. 44417) AS SHOWN ON MAP RECORDED IN BOOK 1, PAGES 521 & 522

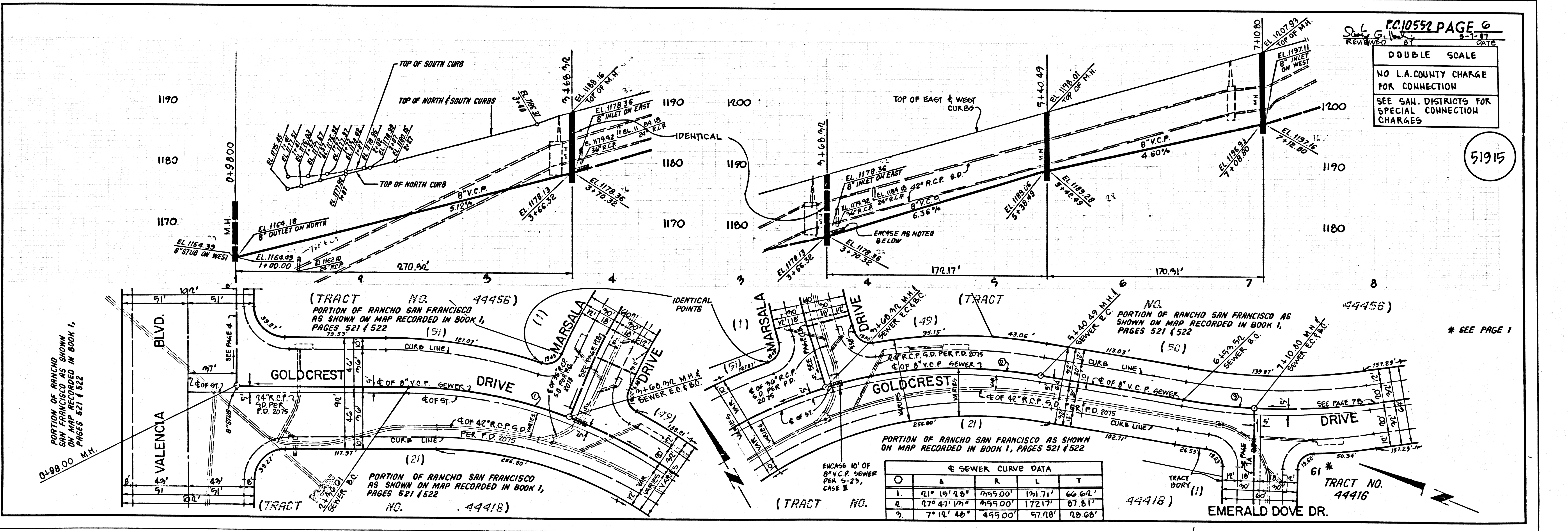
TRACT NO. 44416
 LORIKEET LANE
 (TRACT NO. 44416) AS SHOWN ON MAP RECORDED IN BOOK 1, PAGES 521 & 522

TRACT NO. 44454
 WOODLARK DRIVE
 (TRACT NO. 44454) AS SHOWN ON MAP RECORDED IN BOOK 1, PAGES 521 & 522

TRACT NO. 44416
 MOORHEN COURT
 (TRACT NO. 44416) AS SHOWN ON MAP RECORDED IN BOOK 1, PAGES 521 & 522

TRACT NO. 44416
 GOLDCREST DRIVE
 (TRACT NO. 44416) AS SHOWN ON MAP RECORDED IN BOOK 1, PAGES 521 & 522

TRACT NO. 44416
 SIENA COURT
 (TRACT NO. 44416) AS SHOWN ON MAP RECORDED IN BOOK 1, PAGES 521 & 522



P. 10552 PAGE 6
 DOUBLE SCALE
 NO L.A. COUNTY CHARGE FOR CONNECTION
 SEE SAN. DISTRICTS FOR SPECIAL CONNECTION CHARGES

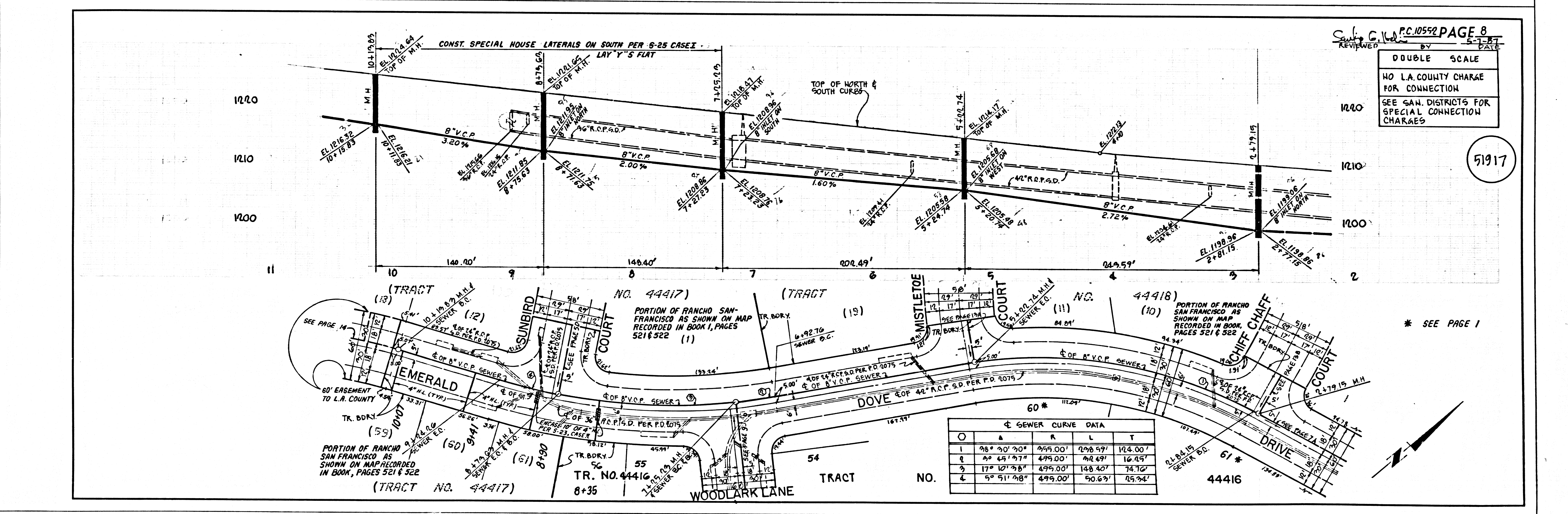
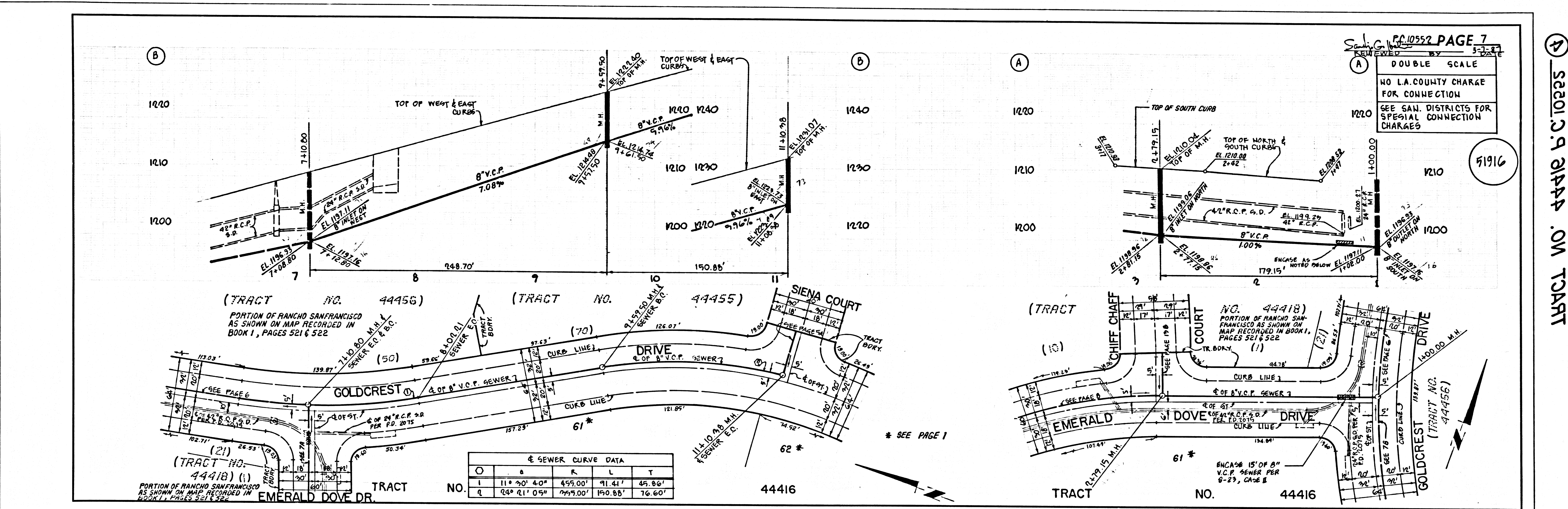
51915

TRACT NO. 44456
 GOLDCREST DRIVE
 (TRACT NO. 44456) AS SHOWN ON MAP RECORDED IN BOOK 1, PAGES 521 & 522

TRACT NO. 44418
 EMERALD DOVE DR.
 (TRACT NO. 44418) AS SHOWN ON MAP RECORDED IN BOOK 1, PAGES 521 & 522

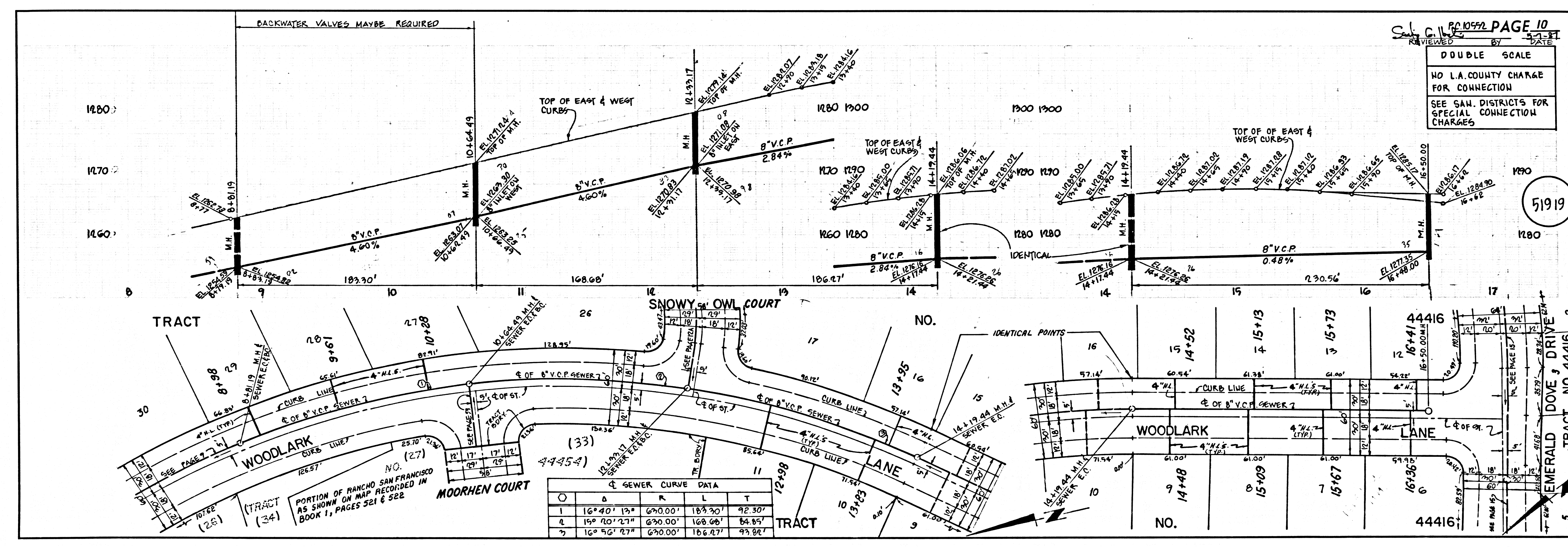
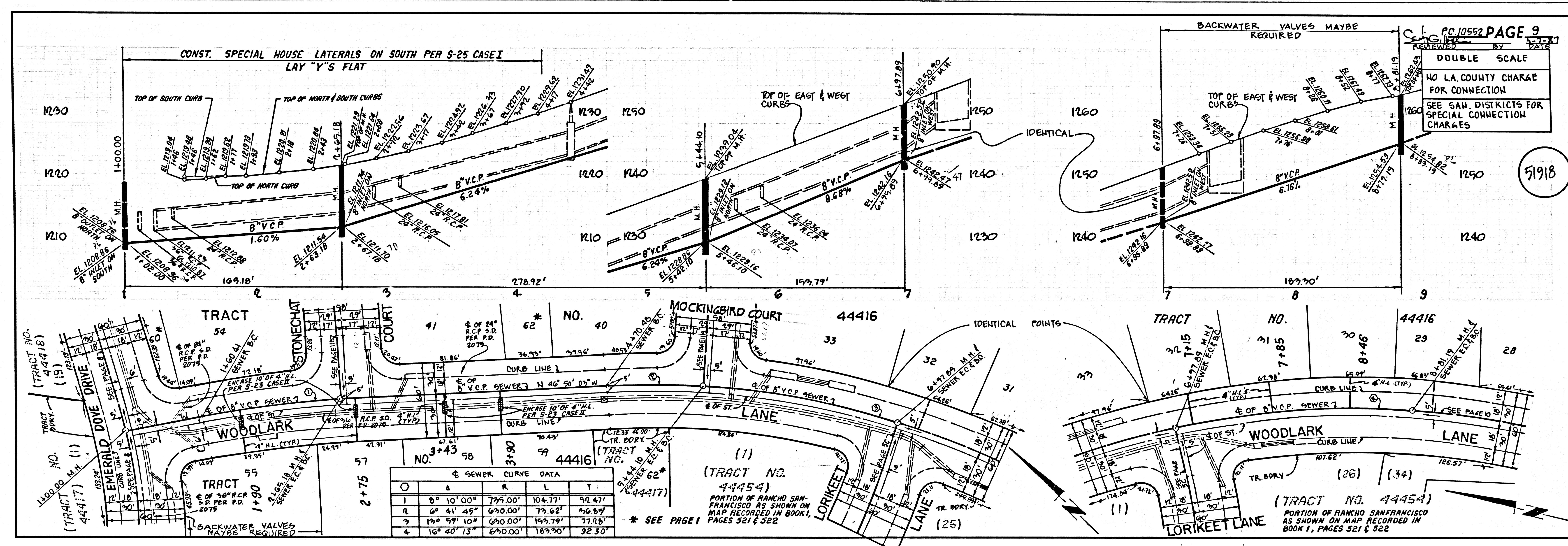
TRACT NO. 44416
 GOLDCREST DRIVE
 (TRACT NO. 44416) AS SHOWN ON MAP RECORDED IN BOOK 1, PAGES 521 & 522

TRACT NO. 44416
 SIENA COURT
 (TRACT NO. 44416) AS SHOWN ON MAP RECORDED IN BOOK 1, PAGES 521 & 522

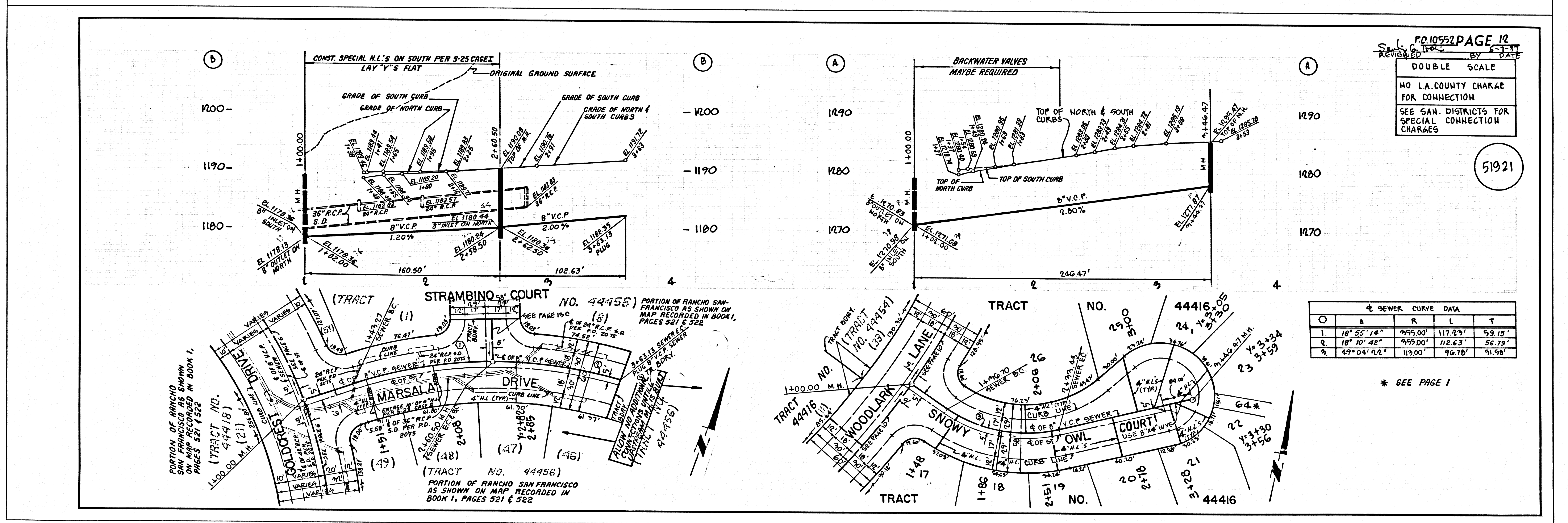
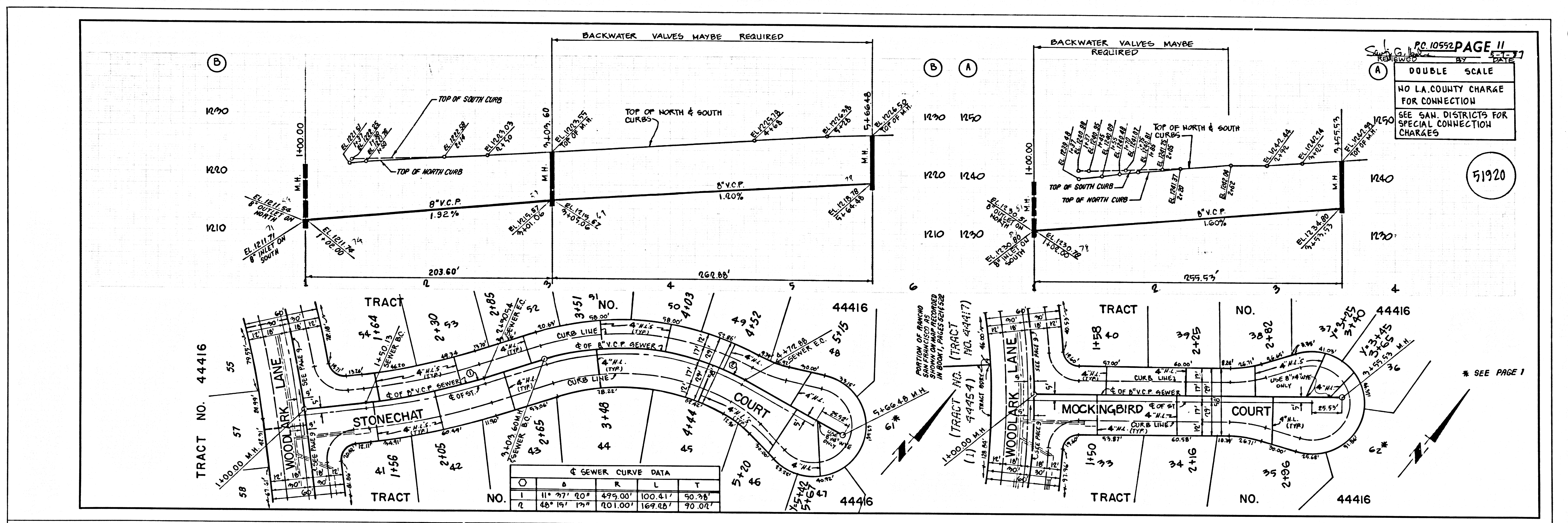


P.C. 10552 PAGE 7
 REVIEWED BY DATE
 DOUBLE SCALE
 NO L.A. COUNTY CHARGE FOR CONNECTION
 SEE SAN. DISTRICTS FOR SPECIAL CONNECTION CHARGES
 51916
 S.E. 2013.P. 01444 ON TRACT

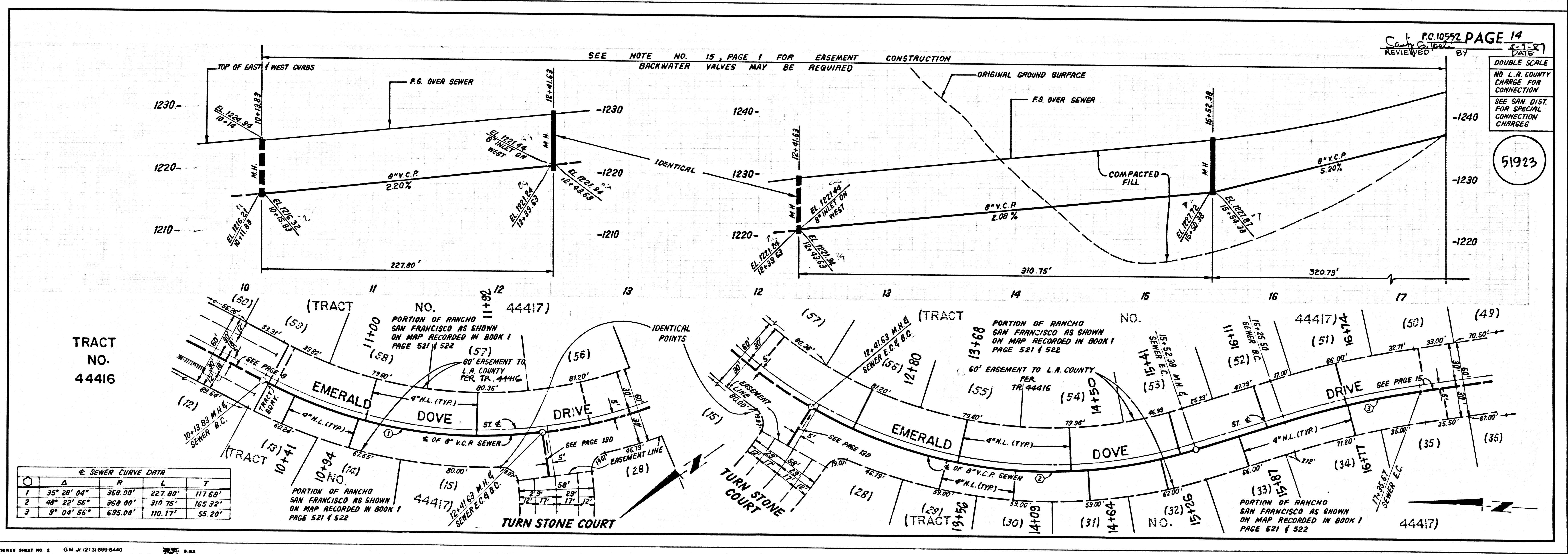
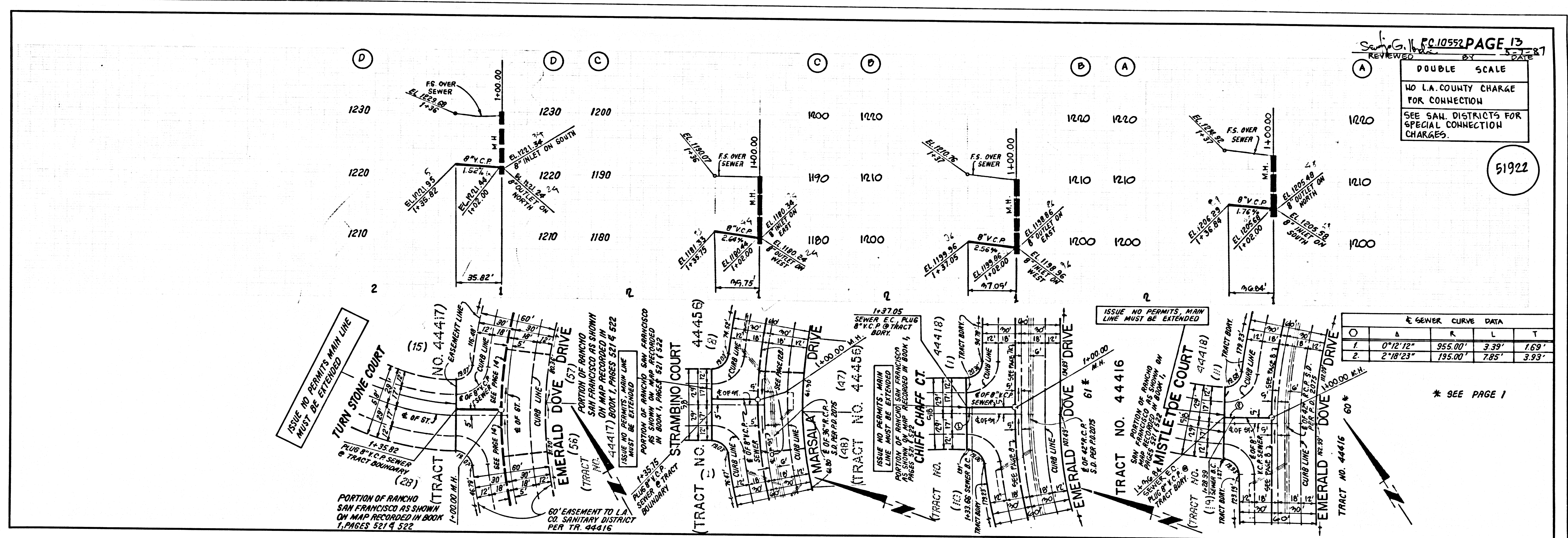
P.C. 10552 PAGE 8
 REVIEWED BY DATE
 DOUBLE SCALE
 NO L.A. COUNTY CHARGE FOR CONNECTION
 SEE SAN. DISTRICTS FOR SPECIAL CONNECTION CHARGES
 51917
 * SEE PAGE 1



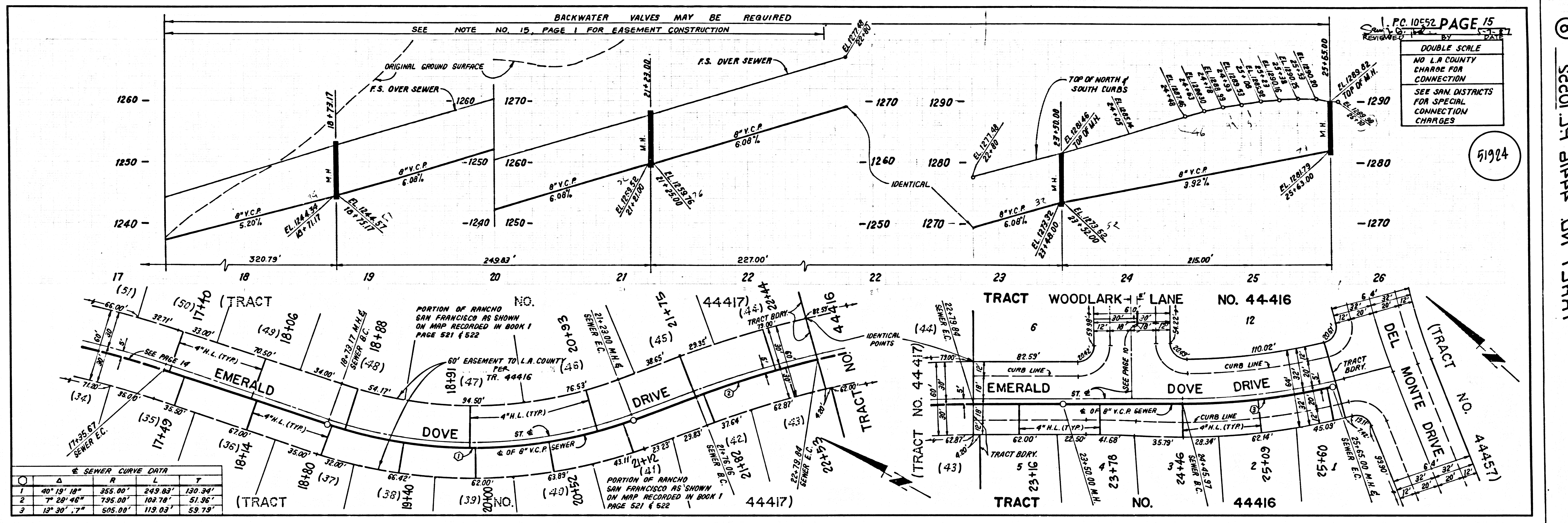
2 S2201.29 01444 ON TRACT



© 2001 C. 01444 01 TRACT



① 52201 29 21444 DV TRACT



PC 10552 PAGE 15
DOUBLE SCALE
NO L.A. COUNTY CHARGES FOR CONNECTION
SEE SAN. DISTRICTS FOR SPECIAL CONNECTION CHARGES

51924

PAGE

8 52201 27 21416 44416 44415 44417