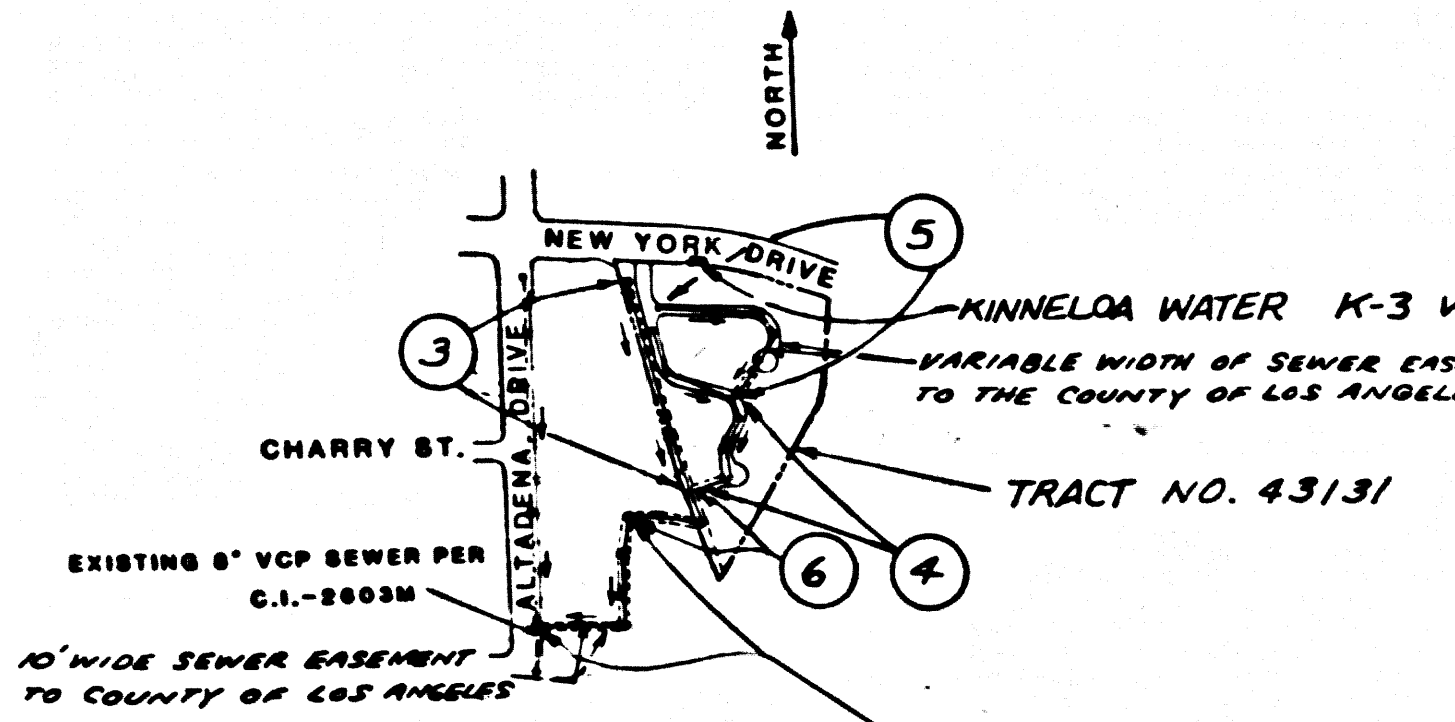


B.M. NO. C1 7726 LACRO ELEV. 992.190
 2 FEET NORTH OF BEGINNING OF CURB RETURN AT
 THE NORTHWEST CORNER OF ALTADENA DRIVE AND NEW
 YORK DRIVE 85 FEET NORTH AND 30 FEET WEST OF THE
 CENTRAL INTERSECTION.
 PASADENA QUAD. 19 80



INDEX MAP
 SCALE: 1"=600'

NOTE: NUMBERS IN CIRCLES INDICATE
 THE PAGE NUMBER

INDEX MAP
 SCALE: 1"=600'
 TRACT NO. 43131
 P.C. 10554

GENERAL NOTES (CONT.)

16. FULL COMPLIANCE WITH PART II OF THE SPECIAL PROVISIONS IS REQUIRED FOR THE INSTALLATION OF A.B.S. COMPOSITE PIPE.
17. MANHOLE WATER STOP GASKETS AND CLAMPS ARE REQUIRED FOR THE CONNECTION OF A.B.S. COMPOSITE PIPE TO MANHOLE STRUCTURES.
18. A.B.S. SOLID WALL PIPE MUST BE USED FOR WYE AND HOUSE LATERAL CONNECTIONS TO A.B.S. COMPOSITE MAINLINE SEWER PIPE.
19. A.B.S. COMPOSITE PIPE SHALL BE BEDDED IN CONFORMANCE WITH THE TABLE IN SECTION B-3.1 OF PART III OF THE SPECIAL PROVISIONS.
20. THREE DEGREE DEFLECTION COUPLERS ARE REQUIRED FOR RADIUS OF CURVATURE LESS THAN 300 FEET WHEN USING 8" A.B.S. COMPOSITE PIPE.
21. NO CONNECTIONS FOR DISPOSAL OF INDUSTRIAL WASTE IS ALLOWED IF A.B.S. COMPOSITE PIPE IS USED.
22. SEWER LINE CURVATURE SHALL NOT BE ACHIEVED BY PULLING OF JOINTS OR BEVELING PIPE ENDS WHEN USING PLASTIC PIPE INCLUDING A.B.S. COMPOSITE PIPE.
23. ALL WYES AND/OR HOUSE LATERALS ARE TO BE LOCATED AT LEAST FIVE FEET APART AND WHEN POSSIBLE NOT CLOSER THAN FIVE FEET TO ANY MANHOLE.
24. A.B.S. SOLID WALL PIPE IS NOT ACCEPTABLE FOR USE AS MAINLINE SEWER.
25. ONLY WYE BRANCHES ARE TO BE USED FOR CONNECTION TO A B.S. COMPOSITE MAINLINE SEWER PIPE.
26. CAST IRON SEWER PIPE MAY BE SUBSTITUTED IN PLACE OF CONCRETE ENCASUREMENT OF 8" VCP SEWER.

NO CONNECTION FOR THE DISPOSAL OF INDUSTRIAL WASTES SHALL BE MADE TO SEWERS SHOWN ON THESE DRAWINGS UNTIL A PERMIT FOR INDUSTRIAL WASTEWATER DISCHARGE HAS BEEN ISSUED BY THE SANITATION DISTRICTS FOR SAID CONNECTION.

BEFORE BREAKING INTO OR CONSTRUCTION ON A COUNTY SANITATION DISTRICT SEWER AND PRIOR TO FINAL ACCEPTANCE OF THE PROJECT, SANITATION DISTRICT INSPECTOR SHALL BE NOTIFIED BY PHONE (818) 262-8605, SO THAT REQUIRED INSPECTION CAN BE MADE.

GENERAL NOTES:

1. ELEVATIONS ARE IN FEET ABOVE U.S.C. & G.S. SEA LEVEL DATUM OF 1988.
2. NO REVISIONS SHALL BE MADE IN THESE PLANS WITHOUT THE APPROVAL OF THE DIRECTOR OF PUBLIC WORKS.
3. NO REPRESENTATIVE OF THE DEPARTMENT OF PUBLIC WORKS WILL SURVEY OR LAY OUT ANY PORTION OF THE WORK.
4. GRADES TO WHICH THIS IMPROVEMENT IS TO BE CONSTRUCTED ARE SHOWN ON PLANS AND PROFILES. GRADE POINTS FOR TOP OF CURB, CENTER LINE OF STREETS OR CENTER LINE OF ALLEYS ARE SHOWN BY CIRCLES ON PROFILES AT ALL POINTS BY THREE DESIGNATED POINTS. THE SPACING SHALL BE ESTABLISHED SO AS TO CONFORM TO A STRAIGHT LINE 100 FEET BETWEEN SAID DESIGNATED POINTS.
5. THE PRIVATE ENGINEER SHALL FURNISH THE DEPARTMENT OF PUBLIC WORKS WITH GRADE SHEETS AND ESTIMATIONS FOR ALL HOUSE LATERALS AND 12" OR 14" BRANCHES AND SHALL PROVIDE STAKES FOR THEM AT THEIR PROPER LOCATIONS WITH STATIONING PLAINLY MARKED. ALL HOUSE LATERALS SHALL BE CONSTRUCTED IN STRAIGHT ALIGNMENT FROM THE MAIN LINE SEWER EXCEPT AS SHOWN ON THE PLANS. HOUSE LATERALS FROM CHIMNEYS SHALL NOT HAVE AN ANGLE OF LESS THAN 45° WITH THE MAIN LINE SEWER. ANY CHANGE IN ALIGNMENT SHALL BE RECEIVED IN WRITING BY THE PRIVATE ENGINEER.
6. THE PRIVATE ENGINEER SHALL FURNISH THE HOUSE LATERAL DEPTH AT THE PROPERTY LINE BELOW THE TOP OF CURB ELEVATION FOR EACH HOUSE LATERAL ON THE GRADE SHEET.
7. BEFORE WORK CAN BE STARTED THE CONTRACTOR MUST OBTAIN A PERMIT TO EXCAVATE IN COUNTY STREETS FROM THE COUNTY DIV. OF THE LOS ANGELES DEPARTMENT OF PUBLIC WORKS, PERMIT OFFICE NO. 16-111-111 AND PAY A FEE TO THE DIRECTOR OF PUBLIC WORKS. SEE SD. 16-111-111, LOS ANGELES, CALIFORNIA, REG. TO COVER THE COST OF CONSTRUCTION INSPECTION AND RECORD PLANS.
8. BEFORE WORK IS DONE IN A STATE HIGHWAY A PERMIT MUST BE OBTAINED FROM THE STATE OF CALIFORNIA, DIVISION OF HIGHWAYS, 151 SOUTH SPRING STREET, LOS ANGELES, CALIFORNIA.
9. APPROVAL OF THIS PLAN BY THE COUNTY OF LOS ANGELES DOES NOT CONSTITUTE A REPRESENTATION AS TO THE ACCURACY OF THE LOCATION OF OR THE EXISTENCE OR NON-EXISTENCE OF ANY UNDERGROUND UTILITY PIPE, OR STRUCTURE WITHIN THE LIMITS OF THIS PROJECT. THIS NOTE APPLIES TO ALL PAGES.
10. REFER TO SECTION 7.18.1 OF THE STANDARD SPECIFICATIONS REGARDING SAFETY ORDERS.
11. PRIOR TO THE ISSUANCE OF THE REQUIRED SEWER CONSTRUCTION PERMIT, THE CONTRACTOR SHALL OBTAIN AND FILE WITH THE DEPARTMENT OF PUBLIC WORKS COPIES OF A PERMIT TO EXCAVATE IN COUNTY STREETS FROM THE COUNTY DIV. OF THE DEPARTMENT OF PUBLIC WORKS, A PERMIT FOR EXCAVATIONS AND TRENCHES FROM THE STATE OF CALIFORNIA, A DIVISION OF INDUSTRIAL SAFETY AND A CERTIFICATE OF HOMEOWNERS COMPENSATION INSURANCE WITH THE DEPARTMENT OF PUBLIC WORKS, SEE SD. 16-111-111, LOS ANGELES, CALIFORNIA. THESE PERMITS MUST BE OBTAINED AND FILED PRIOR TO CANCELLATION OF POLICY.

CONSTRUCTION NOTES:

1. WORK SHALL BE CONSTRUCTED ACCORDING TO THE STANDARD SPECIFICATIONS FOR PUBLIC WORKS CONSTRUCTION 1988 EDITION WITH SUPPLEMENTARY AND COUNTY ENGINEER SPECIAL PROVISIONS FOR THE CONSTRUCTION OF SANITARY SEWERS DATED 11-11-88 AND SHALL BE PROVIDED ONLY IN THE PRESENCE OF THE COUNTY DIV. OF PUBLIC WORKS.
2. THE CONTRACTOR SHALL NOTIFY THE CONSTRUCTION DIVISION BY TELEPHONE 226-8811 AT LEAST THIRTY-FOUR HOURS BEFORE START-UP OF ANY WORK UNDER THIS CONTRACT.
3. HOUSE LATERALS TO BE CONSTRUCTED WITH INVERTS AT 1/4" RISE/FT TO THE EDGE OF THE R/W LINE.
4. WYE OR TEE BRANCHES MAY BE USED FOR CONNECTIONS TO MAINLINE SEWERS EXCEPT AS NOTED.
5. ALL STRUCTURES SHALL BE EITHER BRICK MANHOLES PER B-3 OR PRECAST CONCRETE MANHOLES PER B-3, EXCEPT AS NOTED.
6. PROVIDE STAKES ON 1:8 PROPERTY LINE OR PROPERTY LINES PRODUCED AT RIGHT ANGLES TO THE SEWER LINE AT THE CENTER LINE OF EACH MANHOLE.
7. MANHOLE TOPS IN UNIMPROVED HIGHWAYS TO BE 24 INCHES ABOVE FINISHED GRADE.
8. UNTRAPPED CLAY PIPE JOINTS SHALL BE TYPE "10" OR "14" PER STANDARD SPECIFICATIONS SECTION 200-2.
9. IF A POWER POLE IS WITHIN THREE FEET OF THE SEWER THE SEWER SHALL BE ENCASED PER B-3 CASE A TWO FEET ON EACH SIDE FROM THE POINT OF INTERFERENCE.
10. IF DURING THE COURSE OF CONSTRUCTION IT IS DETERMINED THAT THERE IS LESS THAN FOUR FEET OF COVER OVER THE TOP OF MAINLINE OR HOUSE LATERAL V.C.P. SEWER WHICH IS NOT INDICATED ON THE PLANS, THE PIPE SHALL BE ENCASED PER B-3 CASE "F" UNLESS OTHERWISE APPROVED BY THE DIRECTOR OF PUBLIC WORKS.
11. ALL JOINTS BETWEEN CAST IRON PIPE AND WITHIN CAST IRON PIPE SHALL BE MADE WITH A RUBBER SLEEVE JOINT, TYPE "10" OR "14", WITH BUSHING IF NECESSARY PER STANDARD SPECIFICATIONS SECTION 200-2.
12. SEWERS TO BE TESTED FOR LEAKAGE PER SECTION 200-1.4 OF THE STANDARD SPECIFICATIONS AND SPECIAL PROVISIONS.
13. RECONSTRUCT ALL TRENCHES WITHIN PAVED AREAS TO MEET LOS ANGELES COUNTY PUBLIC WORKS OR CALIFORNIA STATE HIGHWAY REQUIREMENTS IN ACCORDANCE WITH PERMITS.
14. FULL COMPLIANCE WITH SECTION 200-1.3 OF THE STANDARD SPECIFICATIONS WILL BE REQUIRED FOR BACKFILL IN STREETS. CERTIFICATION OF BACKFILL COMPACTION AND SAND EQUIVALENTS BY A QUALIFIED REGISTERED TESTING LABORATORY SHALL BE PROVIDED BY THE PERMITTEE PRIOR TO THE ISSUANCE OF A CERTIFICATE OF FINAL ACCEPTANCE.
15. SPECIAL BACKFILL IN EASEMENT CONSTRUCTION IN BACKFILL TRENCH AND REPLACE OTHER EARTH SO AS TO ACHIEVE THE NATURAL OR FINISHED GRADES AND SLOPES SHOWN ON THE DRAINAGE PLAN APPROVED FOR THE DEVELOPMENT BY THE LAND USE DEPARTMENT DIVISION. IN ALL BACKFILL AND EARTH RECEPTABLE SHALL BE COMPACTED TO A MINIMUM OF 90% OF MAXIMUM DENSITY PER ASTM D METHOD OF TEST D698 AT 4" MOISTURE ACCEPTABLE CERTIFICATION OF SUCH COMPACTION SHALL BE SUBMITTED TO THE CONSTRUCTION DIVISION.

TO BE CONSTRUCTED IN
TRACT NO. 43131

PRIVATE CONTRACT NO. 10554
 INDEX: U-1, H-4

3 SHEETS, 6 PAGES 57033

SCALE: VERT. 1"=4'
 HORIZ. 1"=40'
 DECEMBER, 1986

PREPARED IN THE OFFICES OF
ASL CONSULTING ENGINEERS
 3230 E. FOOTHILL BLVD., STE. 160
 PASADENA, CA 91107
 BY: [Signature]
 REG. C.E. NO. 23712

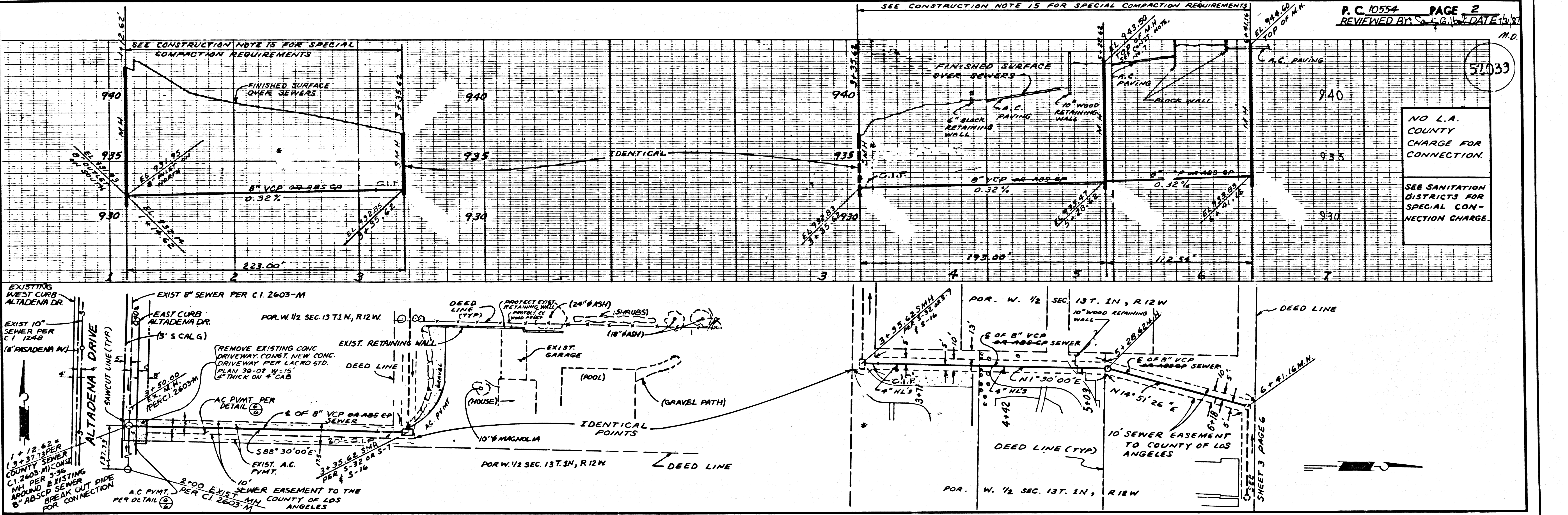
THE FOLLOWING LATEST REVISED STANDARD PLANS ON FILE IN THE OFFICE OF THE DEPARTMENT OF PUBLIC WORKS SHALL APPLY TO THE CONSTRUCTION OF THIS PROJECT:

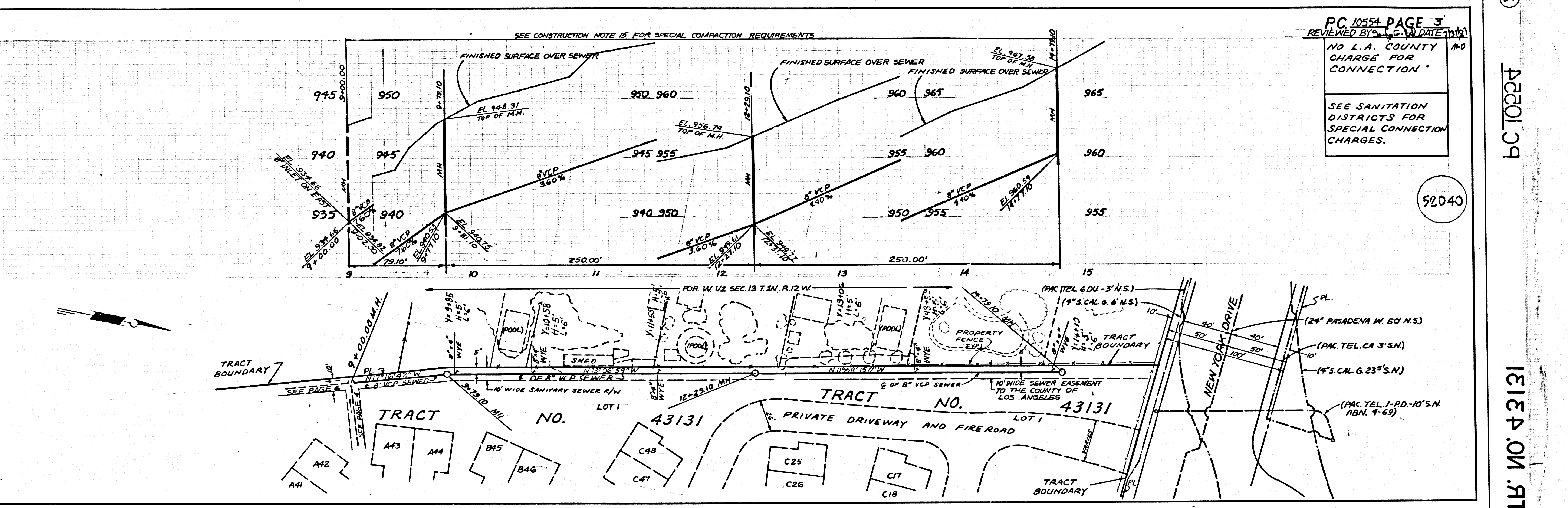
MINIMUM PUBLIC SAFETY REQUIREMENTS	B-1
RECTANGULAR SHALLOW MANHOLE	B-2
BRICK MANHOLE	B-3
RECORDING FOR SEWER PIPE	B-4
CRACKING AND ENCASUREMENT	B-5
WYE OR TEE SUPPORT	B-6
ALLOWABLE TRENCH WIDTHS	B-7
LOCKING MANHOLE FRAME AND COVER	B-8
PRECAST CONCRETE SHALLOW MANHOLE	B-9
BRICK MANHOLE	B-10
NON-REINFORCED PRECAST CONCRETE MANHOLE	B-11
REINFORCED PRECAST CONCRETE MANHOLE	B-12
RECT. M.H. FRAME & COVERS	B-13

COUNTY OF LOS ANGELES, CALIFORNIA
 THOMAS A. TIDEMANSON, DIRECTOR OF PUBLIC WORKS
 CHARLES W. CARRY, CHIEF ENGINEER

APPROVED: [Signature] 03-87 (0470)
 CHECKED: [Signature] 7-1-87 (0471)
 REG. C.E. NO. 16 841

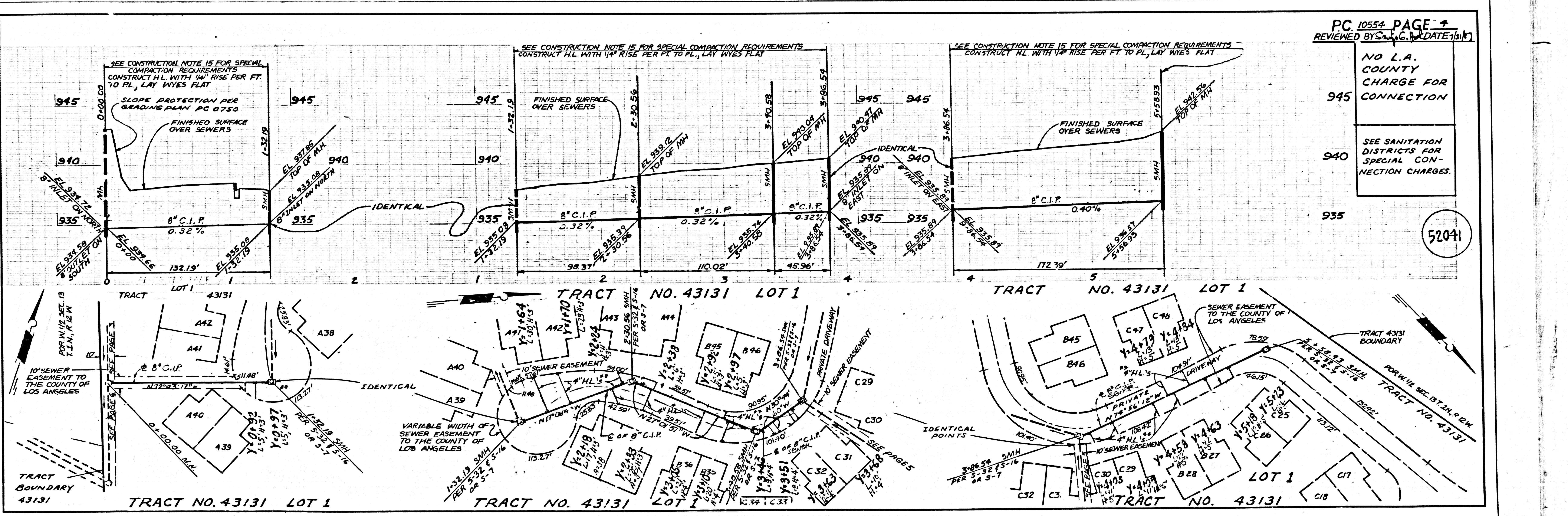
FOOTHILL BLDG. DIST. 3





PC 10554 PAGE 3
 REVIEWED BY S. G. DATE 10/1/11
 NO L.A. COUNTY
 CHARGE FOR
 CONNECTION
 SEE SANITATION
 DISTRICTS FOR
 SPECIAL CONNECTION
 CHARGES.

52040



PC 10554 PAGE 4
 REVIEWED BY S. G. DATE 10/1/11
 NO L.A. COUNTY
 CHARGE FOR
 CONNECTION
 SEE SANITATION
 DISTRICTS FOR
 SPECIAL CON-
 NECTION CHARGES.

52041

5
 A2001.09
 1E1E4.0M.9T

