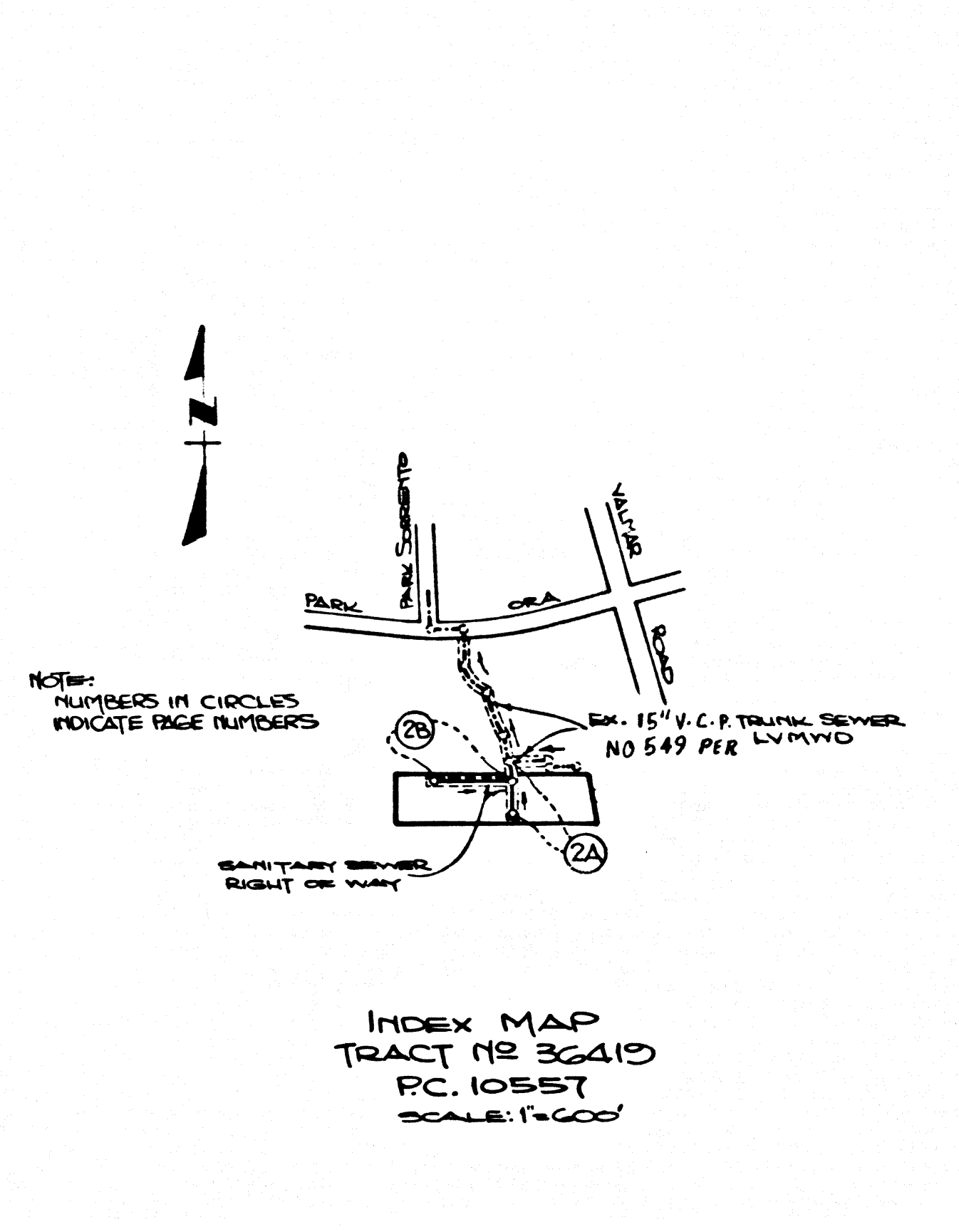


B.M. C.G. 9034 ELEV. 977.372
 R.D.B.M. TAG IN CB 5 FT E BOX 20 FT N
 @ 45 FT E C/L INT VALMAR RD (OLD
 TORANGA CYN RD) @ BRENFORD ST
 MALIBU QUAD. 19 80.

PRIVATE ENGINEER'S NOTICE TO CONTRACTORS
 THE EXISTENCE AND LOCATION OF ANY UNDERGROUND UTILITY PIPES OR STRUCTURES SHOWN ON THESE PLANS ARE OBTAINED BY A SEARCH OF THE AVAILABLE RECORDS TO THE BEST OF OUR KNOWLEDGE THERE ARE NO EXISTING UTILITIES EXCEPT AS SHOWN ON THESE PLANS. THE CONTRACTOR IS REQUIRED TO TAKE THE NECESSARY PRECAUTIONARY MEASURES TO PROTECT THE UTILITIES SHOWN AND ANY OTHER UTILITIES NOT OF RECORD OR NOT SHOWN ON THESE PLANS. THE CONTRACTOR SHALL BE RESPONSIBLE FOR NOTIFYING UNDERGROUND SERVICE AGENCY AT 1-800-425-1137 TWO WORKING DAYS PRIOR TO ANY EXCAVATION OR CONSTRUCTION.
 REGISTERED ENGINEER
 R.C.E. NO. 18233

GENERAL NOTES:
 1. ELEVATIONS ARE IN FEET ABOVE U.S. & U.S. SEA LEVEL DATUM OF 1929.
 2. NO REVISIONS SHALL BE MADE IN THESE PLANS WITHOUT THE APPROVAL OF THE DEPT. OF PUBLIC WORKS.
 3. NO REPRESENTATIVE OF THE DEPT. OF PUBLIC WORKS WILL SURVEY OR LAY OUT ANY PORTION OF THE WORK.
 4. GRADES TO WHICH THIS IMPROVEMENT IS TO BE CONSTRUCTED ARE SHOWN ON PLANS AND PROFILES. GRADE POINTS FOR TOP OF CURBS, CENTERLINE OF STREETS, OR CENTERLINE OF ALLEYS ARE SHOWN BY CIRCLES OR SQUARES AT ALL POINTS BETWEEN DESIGNATED POINTS. THE GRADE SHALL BE ESTABLISHED SO AS TO CONFORM TO A STRAIGHT LINE DRAWN BETWEEN SAID DESIGNATED POINTS.
 5. THE PRIVATE ENGINEER SHALL FURNISH THE DEPT. OF PUBLIC WORKS WITH GRADE SHEETS AND STATIONING FOR ALL HOUSE LATERALS AND 12" OR 18" BRANCHES AND SHALL PROVIDE STAKES FOR THEM AT THEIR PROPER LOCATIONS WITH STATIONING PLAINS MARKED. ALL HOUSE LATERALS SHALL BE CONSTRUCTED IN A STRAIGHT ALIGNMENT AT RIGHT ANGLES FROM THE MAIN LINE SEWER EXCEPT AS SHOWN ON THE PLANS. HOUSE LATERALS FROM CHIMNEYS SHALL NOT TAKE AN ANGLE OF LESS THAN 45° WITH THE MAIN LINE SEWER. ANY CHANGE IN ALIGNMENT SHALL BE REQUESTED IN WRITING BY THE PRIVATE ENGINEER.
 6. THE PRIVATE ENGINEER SHALL FURNISH THE HOUSE LATERAL DEPTH AT THE PROPERTY LINE BELOW THE TOP OF CURB ELEVATION FOR EACH HOUSE LATERAL ON THE GRADE SHEET.
 7. BEFORE WORK CAN BE STARTED, THE CONTRACTOR MUST OBTAIN A PERMIT TO EXCAVATE IN COUNTY STREETS FROM THE ROAD ELEMENT OF THE L.A. DEPT. OF PUBLIC WORKS, DIST. OFFICE NO. 3 AND PAY A FEE TO THE COUNTY ENGINEER 2250 ALCAZAR ST., L.A., CA 90033, TO COVER THE COST OF CONSTRUCTION INSPECTION AND RECORD PLANS.
 8. IF WORK IS TO BE DONE IN A STATE HIGHWAY, A PERMIT MUST BE OBTAINED FROM THE STATE OF CALIFORNIA, DIVISION OF HIGHWAYS, 120 SOUTH SPRING STREET, LOS ANGELES, CALIFORNIA.
 9. APPROVAL OF THIS PLAN BY THE COUNTY OF LOS ANGELES DOES NOT CONSTITUTE A REPRESENTATION AS TO THE ACCURACY OF THE LOCATION OF OR THE EXISTENCE OR NON-EXISTENCE OF ANY UNDERGROUND UTILITY PIPE, OR STRUCTURE WITHIN THE LIMITS OF THIS PROJECT. THIS NOTE APPLIES TO ALL PAGES.
 10. REFER TO SECTION 706.4 OF THE STANDARD SPECIFICATIONS, REGARDING SAFETY CORDS.
 11. PRIOR TO THE ISSUANCE OF THE REQUIRED SEWER CONSTRUCTION PERMIT THE CONTRACTOR SHALL OBTAIN AND FILE WITH THE DEPT. OF PUBLIC WORKS COPIES OF A PERMIT TO EXCAVATE IN COUNTY STREETS FROM THE LOS ANGELES COUNTY ROAD DEPARTMENT, A PERMIT FOR EXCAVATION AND TRENCHES FROM THE STATE OF CALIFORNIA DIVISION OF INDUSTRIAL SAFETY AND A CERTIFICATE OF WORKER'S COMPENSATION INSURANCE WITH THE DEPARTMENT OF PUBLIC WORKS 2250 ALCAZAR ST., RM. 2203, L.A., CA 90033 NAMED AS THE CERTIFICATE HOLDER TO NOTIFY 30 DAYS PRIOR TO CANCELLATION OF POLICY.
CONSTRUCTION NOTES:
 1. WORK SHALL BE CONSTRUCTED ACCORDING TO THE STANDARD SPECIFICATIONS FOR PUBLIC WORKS CONSTRUCTION 1986 EDITION WITH SUPPLEMENTS (S-1) TO SECTION 200.01. SPECIAL PROVISIONS FOR THE CONSTRUCTION OF SANITARY SEWERS DATED SEPT. 21, 1985 SHALL BE PROSECUTED ONLY IN THE PRESENCE OF THE DIRECTOR OF PUBLIC WORKS.
 2. THE CONTRACTOR SHALL NOTIFY THE CONSTRUCTION DIV. PUBLIC WORKS DEPT. TEL. (213) 226-8811 AT LEAST 24 HOURS BEFORE STARTING ANY WORK UNDER THIS CONTRACT.
 3. HOUSE LATERALS TO BE CONSTRUCTED WITH INVERTS AT PROPERTY LINE 8 FEET BELOW CURB GRADE EXCEPT AS NOTED.
 4. WYE OR TEE BRANCHES MAY BE USED FOR CONNECTIONS TO MAINLINE SEWERS EXCEPT AS NOTED.
 5. WYE BRANCHES ONLY MAY BE USED FOR CONNECTIONS TO MAINLINE SEWERS IF A.B.S.C.P. IS USED.
 6. PRECAST CONCRETE SEWER MANHOLES PER S-3 OR PRECAST CONCRETE SEWER MANHOLES PER S-3L EXCEPT AS NOTED.
 7. PROVIDE STAKES ON THE PROPERTY LINE OR PROPERTY LINES PRODUCED AT RIGHT ANGLES TO THE SEWER LINE AT THE CENTERLINE OF EACH MANHOLE.
 8. MANHOLE TOPS IN UNIMPROVED RIGHTS OF WAY TO BE 36 INCHES ABOVE FINISHED GRADE.
 9. WITHIN CLAY PIPE JOINTS SHALL BE THE 1" OR 1/2" PER STANDARD SPECIFICATIONS SECTION 200.2.
 10. IF A POWER POLE IS WITHIN THREE FEET OF THE SEWER, THE SEWER SHALL BE ENCASED PER S-23 CASE 1 TWO FEET ON EACH SIDE FROM THE POINT OF INTERFERENCE.
 11. IF DURING THE COURSE OF CONSTRUCTION IT IS DETERMINED THAT THERE IS LESS THAN FOUR FEET OF COVER OVER THE TOP OF A MAINLINE OR HOUSE LATERAL SEWER WHICH IS NOT INDICATED ON THE PLANS, THE PIPE SHALL BE ENCASED PER S-23 CASE 1 UNLESS OTHERWISE APPROVED BY THE DIR. OF PUBLIC WORKS.
 12. ALL JOINTS BETWEEN CAST IRON PIPE AND VITRIFIED CLAY PIPE SHALL BE MADE WITH A RUBBER SLEEVE JOINT TYPE "C" OR "D" WITH BUSHING IF NECESSARY PER STANDARD SPECIFICATIONS SECTION 200.2.
 13. ALL JOINTS BETWEEN CAST IRON PIPE AND A.B.S.C.P. SHALL BE MADE WITH APPROVED FITTINGS.
 14. SEWERS TO BE TESTED FOR LEAKAGE PER SECTION 306.1.4 OF THE STANDARD SPECIFICATIONS AND SPECIAL PROVISIONS.
 15. RESURFACE ALL TRENCHES WITHIN PAVED AREAS TO MEET LA COUNTY PUBLIC WORKS OR CALIF. STATE HWY. REQUIREMENTS IN ACCORDANCE WITH PERMITS.
 16. FULL COMPLIANCE WITH SECTION 306.1.4 OF THE STD. SPECS. WILL BE REQUIRED FOR BACKFILL IN STREETS. CERTIFICATION OF BACKFILL COMPACTION AND SAND EQUIVALENTS BY A QUALIFIED, REGISTERED TESTING LABORATORY SHALL BE PROVIDED BY THE CONTRACTOR PRIOR TO THE ISSUANCE OF A CERTIFICATE OF PARTIAL ACCEPTANCE.
 17. SPECIAL BACKFILL MEASUREMENT CONSTRUCTION IN BACKFILL TRENCHES REPLACE OTHER PARTS SO AS TO ACHIEVE THE NATURAL OR FINISHED GRADES AND SLOPES SHOWN ON THE GRADING PLAN APPROVED FOR THIS DEVELOPMENT BY THE BUILDING AND SAFETY DIVISION. ALL BACKFILL AND EARTH REPAIRS SHALL BE COMPACTED TO A MINIMUM DENSITY PER A-76 STD METHOD OR TEST D698-57 AS MODIFIED. ACCEPTABLE CERTIFICATION OF SUCH COMPACTION SHALL BE SUBMITTED TO THE CONSTRUCTION DIV. PUBLIC WORKS DEPT.

PROFILE, ALIGNMENT AND GRADE OF
SANITARY SEWERS
 TO BE CONSTRUCTED
TRACT NO. 36419
PRIVATE CONTRACT NO. 10557
 INDEX: C-233, F-3
 SHEET 2 OF 2 PAGES
 SCALE: VERT. 1"=8'
 HORIZ. 1"=40'
 AUGUST, 1986
 PREPARED IN THE OFFICES OF
LIND & HILLERUD, INC.
 5800 MULHUNDEN DRIVE
 VAN NUYS, CA 91411
 REG. C.E. 18233



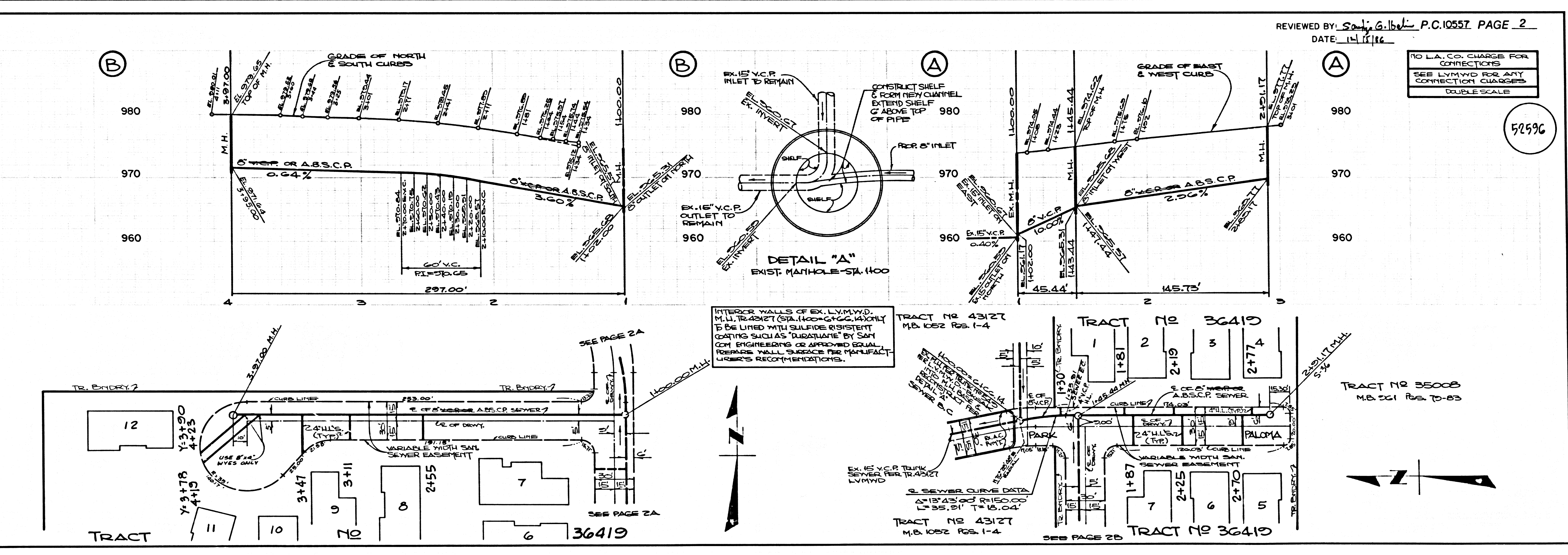
CONSTRUCTION NOTES CON'T.
 16. FULL COMPLIANCE WITH PART IV OF THE SPECIAL PROVISIONS IS REQUIRED FOR THE INSTALLATION OF A.B.S. COMPOSITE PIPE.
 17. MANHOLE WATER STOP GASKETS AND CLAMPS ARE REQUIRED FOR THE CONNECTION OF A.B.S. COMPOSITE PIPE TO MANHOLE STRUCTURES.
 18. A.B.S. SOLID WALL PIPE MUST BE USED FOR WYE AND HOUSE LATERAL CONNECTIONS TO A.B.S. COMPOSITE MAINLINE SEWER PIPE.
 19. A.B.S. COMPOSITE PIPE SHALL BE BEDDED IN CONFORMANCE WITH THE TABLE IN SECTION B-3.1 OF PART IV OF THE SPECIAL PROVISIONS.
 20. THREE DEGREE DEFLECTION COUPLERS ARE REQUIRED FOR RADII OF CURVATURE LESS THAN 300 FEET WHEN USING A.B.S. COMPOSITE PIPE.
 21. NO CONNECTIONS FOR DISPOSAL OF INDUSTRIAL WASTE IS ALLOWED IF A.B.S. COMPOSITE PIPE IS USED.
 22. SEWER LINE CURVATURE SHALL NOT BE ACHIEVED BY PULLING OF JOINTS OR BEVELING PIPE ENDS WHEN USING PLASTIC PIPE INCLUDING A.B.S. COMPOSITE PIPE.
 23. ALL WYES AND/OR HOUSE LATERALS ARE TO BE LOCATED AT LEAST FIVE FEET APART AND WHEN POSSIBLE NOT CLOSER THAN FIVE FEET TO ANY MANHOLE.
 24. A.B.S. SOLID WALL PIPE IS NOT ACCEPTABLE FOR USE AS MAINLINE SEWER.
 25. ONLY WYE BRANCHES ARE TO BE USED FOR CONNECTION TO A.B.S. COMPOSITE MAINLINE SEWER PIPE.
 26. TESTING PER LAS VIRGENES MUNICIPAL WATER DISTRICT:
 A. INFILTRATION & LEAKAGE TESTS - METHODS USED FOR TESTING WILL BE THE SAME AS L.A. COUNTY EXCEPT THE FORMULA TO BE USED IS AS FOLLOWS:
 0.033 GALLONS/WRITE/INCH OF DIAMETER/1,000 FEET
 200 GALLONS/DAY/100" OF DIAMETER/MI
 B. MANHOLE LEAKAGE TESTS - AT THE DISCRETION OF THE DISTRICT'S REPRESENTATIVE, ONE MANHOLE OUT OF EVERY TEN MANHOLES AND A MINIMUM OF TWO WILL BE FILLED WITH WATER & AFTER THREE HOURS WILL BE CHECKED FOR LEAKAGE WITH NO DROP IN LEVEL. FOR EVERY ONE MANHOLE NOT PASSING TEST, FIVE MORE WILL BE TESTED AT THE DISCRETION OF THE DISTRICT'S REPRESENTATIVE.
 C. AIR TESTS - WHERE THE DIFFERENCE IN ELEVATION BETWEEN THE INVERT OF THE UPPER STRUCTURE & THE INVERT OF THE LOWER STRUCTURE IS MORE THAN 612 (60) FEET, AN AIR TEST WILL BE MADE.
 THE TIME TAKEN TO LOSE ONE (1) POUND PER SQUARE INCH GAUGE PRESSURE FROM THREE (3) POUNDS PER SQUARE INCH GAUGE PRESSURE TO TWO (2) POUNDS PER SQUARE INCH GAUGE PRESSURE SHALL NOT BE LESS THAN LISTED ABOVE ON THE FOLLOWING TABLE:

MAIN PIPE DIAMETER	MINIMUM TIME LOSS
15" - 18"	15 MINUTES
21" - 24"	20 MINUTES
30" - 36"	30 MINUTES

 IF THE TIME IS LESS THAN LISTED IN THE TABLE ABOVE, THE CONTRACTOR SHALL MAKE SUCH REPAIRS AS ARE NECESSARY TO ELIMINATE THE EXCESSIVE LEAKAGE.
 *NOTE: NOTE NO. 26 APPLIES ONLY TO SEWERS OWNED, OPERATED & MAINTAINED BY L.A. COUNTY.

THE FOLLOWING LATEST REVISED STANDARD PLANS ON FILE IN THE OFFICE OF THE DEPARTMENT OF PUBLIC WORKS SHALL APPLY IN THE CONSTRUCTION OF THIS PROJECT:
 LEGEND S-1
 MINIMUM PUBLIC SAFETY REQUIREMENTS S-2
 BRICK SEWER MANHOLE S-3
 STANDARD MANHOLE STEP S-3L
 RECORDING FOR SEWER PIPE S-4
 CHANGING AND ENCASING S-23
 PIPE OR TEE BURNING S-24
 ALLOWABLE TRENCH WIDTHS S-25
 LOCKING MANHOLE FRAME AND COVER S-26
 NON-REINFORCED PRECAST CONCRETE SEWER MANHOLE S-28

COUNTY OF LOS ANGELES, CALIFORNIA
 LAS VIRGENES MUNICIPAL WATER DISTRICT
 THOMAS A. TIDEMANSON, DIRECTOR
 DEPARTMENT OF PUBLIC WORKS
 APPROVED: *Carl A. Johnson* 12/12/86 DATE: 12/12/86
 APPROVED: *Neil Stokols* DATE: 1-9-87
 H.W. STOKES, CHIEF ENGINEER
 CHECKED: *Henry C. Anderson* 12/15/86 DATE: 12/15/86
 REG. C.E. NO. 17536
 CALABASAS BLDG. DIST. 9.1



1
 BC 10219
 52595
 52596
 61903 ON TRACT

REVIEWED BY: *Sally G. Holt* P.C. 10557 PAGE 2
 DATE: 12/11/86

NO L.A. CO. CHARGE FOR CONNECTIONS
 SEE L.V.M.W.D. FOR ANY CONNECTION CHARGES.
 DOUBLE SCALE

TRACT NO. 35008
 M.B. 0521 Pgs. 10-83

TRACT NO. 43127
 M.B. 0522 Pgs. 1-4

TRACT NO. 36419
 M.B. 0522 Pgs. 1-4

TRACT NO. 36419
 M.B. 0522 Pgs. 1-4

TO: J. Lizakowski - Mapping Division
FROM: Record Plan/Section/Sewer
DATE: 11/30/88
P.C./PROJECT: ~~10557~~ 10557

We are transmitting:
 Tracings

For:
 Micro-Filming

LAND DEVELOPMENT DIVISION
Record Plans

By: Howard Tom (818) 458-4910

REVISED: 11-88(MWP-D6)