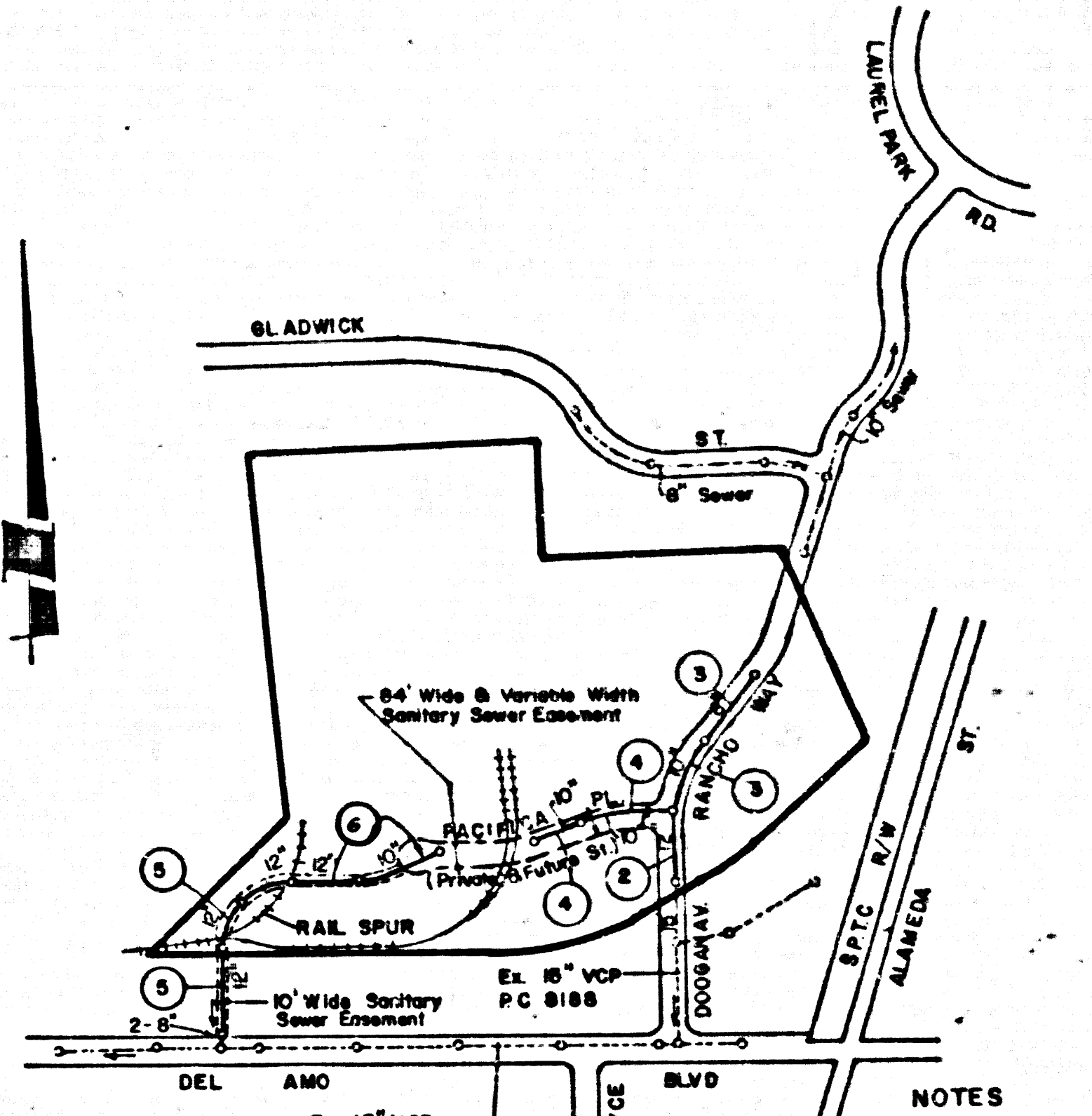


**B.M. CY 9704** ELEV. 33.007  
 R.O.B.M. TAB IN EAST CURB 5 FT. SOUTH OF B.C.R.  
 OF SOUTHEASTERLY RETURN AT DEL AMO BOULEVARD  
 AND FORDYCE AVENUE AND 85 FT. SOUTH AND 34 FT.  
 EAST OF CENTRAL INTERSECTION  
**GARDENA QUAD. 1925**



**INDEX MAP**  
 P.C. No. 10562 P.M. No. 17994  
 SCALE 1" = 600'

**REVISION** No. 1 8-17-87 DATE  
 APPROVED BY: *[Signature]*  
 DEPT. OF PUBLIC WORKS  
 PAGE 1: REVISED KEY MAP  
 PAGE 5: ADDED NH AT STA. 0+20.41  
 CHANGED 12" VCP TO 2-8" CIP  
 AND REVISED GRADE & ELEV'S  
 FROM STA. 0+02 TO STA. 0+41

NO CONNECTION FOR THE DISPOSAL OF INDUSTRIAL WASTES SHALL BE MADE TO SEWERS SHOWN ON THESE DRAWINGS UNLESS A PERMIT FOR INDUSTRIAL WASTEWATER DISCHARGE HAS BEEN ISSUED BY THE SANITATION DISTRICTS FOR SAID CONNECTION.  
 BEFORE BREAKING INTO OR CONSTRUCTION ON A COUNTY SANITATION DISTRICT SEWER AND PRIOR TO FINAL ACCEPTANCE OF THE PROJECT, SANITATION DISTRICT INSPECTOR SHALL BE NOTIFIED BY PHONE (213) 636-1167 SO THAT REQUIRED INSPECTION CAN BE MADE.

**GENERAL NOTES:**

- ELEVATIONS ARE IN FEET ABOVE U.S.C. & G.S. SEA LEVEL, DATUM OF 1988.
- NO REVISIONS SHALL BE MADE IN THESE PLANS WITHOUT THE APPROVAL OF THE DIRECTOR OF PUBLIC WORKS.
- NO REPRESENTATIVE OF THE DEPARTMENT OF PUBLIC WORKS WILL SURVEY OR LAY OUT ANY PORTION OF THE WORK.
- GRADES TO WHICH THIS IMPROVEMENT IS TO BE CONSTRUCTED ARE SHOWN ON PLANS AND PROFILES. GRADE POINTS FOR TOP OF CURB, CENTERLINE OF STREETS OR CENTRAL LINE OF ALL LANE SHOWING BY CIRCLES ON PROFILES AT ALL POINTS BETWEEN DESIGNATED POINTS. THE GRADE SHALL BE ESTABLISHED SO AS TO CONFORM TO A STRAIGHT LINE CURVE BETWEEN SAID DESIGNATED POINTS.
- THE PRIVATE ENGINEER SHALL FURNISH THE DEPARTMENT OF PUBLIC WORKS WITH GRADE SHEETS AND STATIONING FOR ALL HOUSE LATERALS AND "C" OR "S" BRANCHES AND SHALL PROVIDE STAKES FOR THEM AT THEIR PROPER LOCATIONS. THE SETTING PLANS MARKED ALL HOUSE LATERALS SHALL BE CONSTRUCTED IN A STRAIGHT ALIGNMENT AT RIGHT ANGLES FROM THE MAIN LINE BEHIND EXCEPT AS SHOWN ON THE PLANS. HOUSE LATERALS SHALL NOT HAVE AN ANGLE OF LESS THAN 45° WITH THE MAIN LINE SEWER. ANY CHANGE IN ALIGNMENT SHALL BE REQUESTED IN WRITING BY THE PRIVATE ENGINEER.
- THE PRIVATE ENGINEER SHALL FURNISH THE HOUSE LATERAL DEPTH AT THE PROPERTY LINE BELOW THE TOP OF CURB ELEVATION FOR EACH HOUSE LATERAL ON THE GRADE SHEET.
- SEWER WORK CAN BE STARTED. THE CONTRACTOR MUST OBTAIN A PERMIT TO EXCAVATE IN COUNTY STREETS FROM THE CONST. DIV. OF THE LOS ANGELES DEPARTMENT OF PUBLIC WORKS, PERMIT OFFICE, 1200 N. GARDEN ST., LOS ANGELES, CALIFORNIA 90012 TO COVER THE COST OF CONSTRUCTION STOP-TIME AND RECORD PLANS.
- IF WORK IS TO BE DONE IN A STATE HIGHWAY A PERMIT MUST BE OBTAINED FROM THE STATE OF CALIFORNIA, DIVISION OF HIGHWAYS, 120 SOUTH SPRING STREET, LOS ANGELES, CALIFORNIA.
- APPROVAL OF THIS PLAN BY THE COUNTY OF LOS ANGELES DOES NOT CONSTITUTE A REPRESENTATION AS TO THE ACCURACY OF THE LOCATION OF OR THE EXISTENCE OR NON-EXISTENCE OF ANY UNDERGROUND UTILITY PIPE, OR STRUCTURE WITHIN THE LIMITS OF THIS PROJECT. THIS NOTE APPLIES TO ALL PHASES.
- REFER TO SECTION 7.18.1 OF THE STANDARD SPECIFICATIONS, REGARDING SAFETY ORDERS.
- PRIOR TO THE ISSUANCE OF THE REQUIRED SEWER CONSTRUCTION PERMIT, THE CONTRACTOR SHALL OBTAIN AND FILE WITH THE DEPARTMENT OF PUBLIC WORKS COPIES OF A PERMIT TO EXCAVATE IN COUNTY STREETS FROM THE CONST. DIV. OF THE DEPARTMENT OF PUBLIC WORKS. A PERMIT FOR EXCAVATIONS AND TRENCHES FROM THE STATE OF CALIFORNIA, A DIVISION OF INDUSTRIAL SAFETY AND A CERTIFICATE OF WORKERS COMPENSATION INSURANCE WITH THE DEPARTMENT OF PUBLIC WORKS, 1200 N. GARDEN ST., LOS ANGELES, CALIFORNIA 90012 MUST BE OBTAINED AS THE CERTIFICATE HOLDER TO BE NOTIFIED IN WRITING PRIOR TO UNLAWFUL OPERATION OF POLICY.

**CONSTRUCTION NOTES:**

- WORK SHALL BE CONSTRUCTED ACCORDING TO THE STANDARD SPECIFICATIONS FOR PUBLIC WORKS CONSTRUCTION FROM EDITION WITH SUPPLEMENTARY AND COUNTY ENGINEER SPECIAL PROVISIONS FOR THE CONSTRUCTION OF SANITARY SEWERS, DATE SEPT. 24, 1978 AND SHALL BE PROSECUTED ONLY IN THE PRESENCE OF THE DEPT. OF PUBLIC WORKS.
- THE CONTRACTOR SHALL NOTIFY THE CONSTRUCTION DIVISION BY TELEPHONE, 228-4281, AT LEAST TWENTY-FOUR HOURS BEFORE STARTING ANY WORK UNDER THIS CONTRACT.
- HOUSE LATERALS TO BE CONSTRUCTED WITH INVERTS AT PROPERTY LINE 8 FEET BELOW CURB GRADE EXCEPT AS NOTED.
- PIPE OR THE BRANCHES MAY BE USED FOR CONNECTIONS TO MAINLINE SEWERS EXCEPT AS NOTED.
- ALL STRUCTURES SHALL BE EITHER BRICK MANHOLES PER 9-30, EXCEPT AS NOTED.
- PROVIDE STAKES ON THE PROPERTY LINE OR PROPERTY LINES PRODUCED AT RIGHT ANGLES TO THE SEWER LINE AT THE CENTER LINE OF EACH MANHOLE.
- MANHOLE TOPS IN UNIMPROVED AREAS OF WAY TO BE SIX INCHES ABOVE FINISHED GRADE.
- WRITTEN CLAY PIPE JOINTS SHALL BE TYPE "C" OR "D" PER STANDARD SPECIFICATIONS SECTION 290-2.
- IF A MANHOLE IS WITHIN THREE FEET OF THE SEWER, THE SEWER SHALL BE ENCASED PER 9-35. CASE 1 TWO FEET ON EACH SIDE FROM THE POINT OF INTERFERENCE.
- IF DURING THE COURSE OF CONSTRUCTION IT IS DETERMINED THAT THERE IS LESS THAN FOUR FEET OF COVER OVER THE TOP OF A MAIN LINE OR HOUSE LATERAL VCP SEWER WHICH IS NOT INDICATED ON THE PLANS, THE PIPE SHALL BE ENCASED PER 9-35. CASE 1 UNLESS OTHERWISE APPROVED BY THE DIRECTOR OF PUBLIC WORKS.
- ALL JOINTS BETWEEN CAST IRON PIPE AND WRITTEN CLAY PIPE SHALL BE MADE WITH A RUBBER BLEVE JOINT, TYPE "C" OR "D", WITH BUSHING IF NECESSARY PER STANDARD SPECIFICATIONS, SECTION 290-2.
- SEWERS TO BE TESTED PER STANDARD SPECIFICATIONS SECTION 290-1.4 OF THE STANDARD SPECIFICATIONS AND SPECIAL PROVISIONS.
- RESURFACE ALL TRENCHES WITHIN PAVED AREAS TO MEET LOS ANGELES COUNTY PUBLIC WORKS OR CALIFORNIA STATE HIGHWAY REQUIREMENTS IN ACCORDANCE WITH PERMITS.
- FOR COMPLIANCE WITH SECTION 290-1.2.3 OF THE STANDARD SPECIFICATIONS, WILL BE REQUIRED FOR BACKFILL IN STREETS. CERTIFICATION OF BACKFILL, CONTRACTOR AND SAMS EQUIVALENTS BY A QUALIFIED, REGISTERED TESTING LABORATORY SHALL BE PROVIDED BY THE PERMITTEE PRIOR TO THE ISSUANCE OF A CERTIFICATE OF PARTIAL ACCEPTANCE.
- SPECIAL BACKFILL IN EXISTING CONSTRUCTION (A BACKFILL TRENCH AND REPLACE OTHER EARTH) SO AS TO ACQUIRE THE MAXIMUM ON FINISHED GRADES AND SLOPES SHOWN ON THE GRADING PLANS APPROVED FOR THIS DEVELOPMENT BY THE LAND DEVELOPMENT DIVISION. ALL BACKFILL AND FINISH PRODUCTS SHALL BE COMPACTED TO A MINIMUM OF 90% OF MAXIMUM DENSITY PER A.S.T.M. STD. METHOD OF TEST D698. ST-15 MODIFIED ACCEPTABLE CERTIFICATION OF SUCH CONSTRUCTION SHALL BE SUBMITTED TO THE CONSTRUCTION DIVISION, DEPT. OF PUBLIC WORKS.

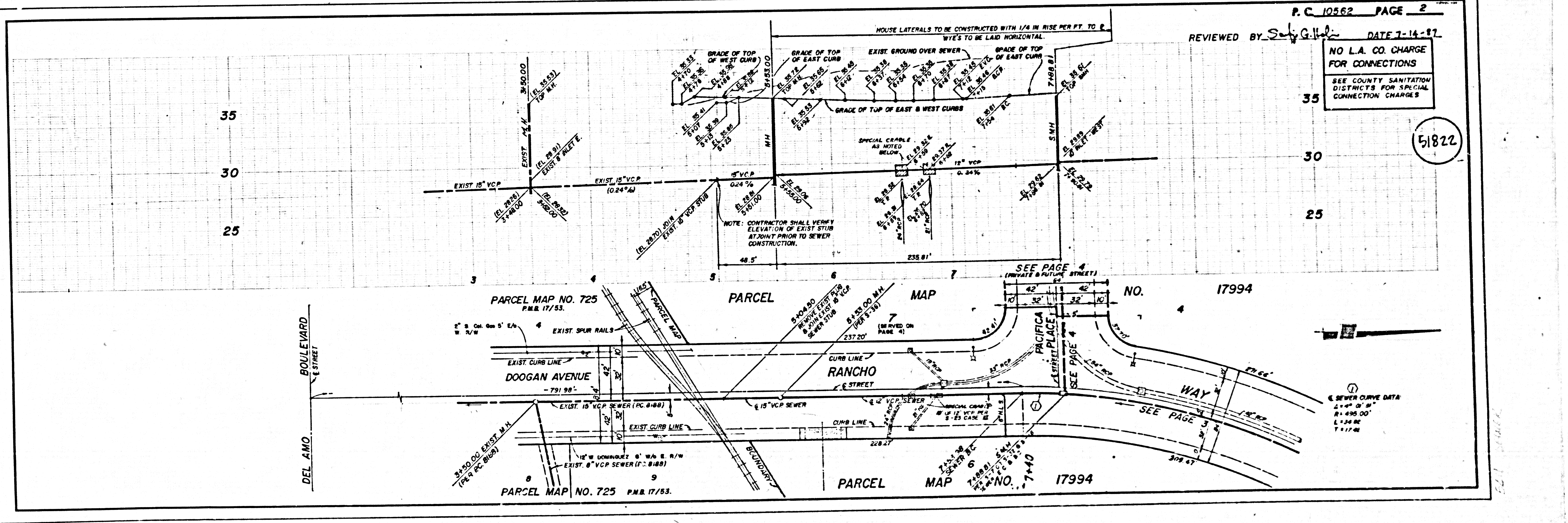
**PARCEL MAP NO. 17994**  
**PRIVATE CONTRACT NO. 10562**  
 C-40  
**3 SHEETS, 6 PAGES**

SCALE: HORIZ. 1" = 40' VERT. 1" = 4'  
 AUGUST 1, 1988  
 PREPARED IN THE OFFICES OF  
 THOMAS TIDEMANSON ENGINEERING, INC.  
 1875 E. Whittier Blvd.  
 Whittier, CA 92603 Tel. 818-691-0830  
 BY: *[Signature]*  
 REG. C.E. No. 9254

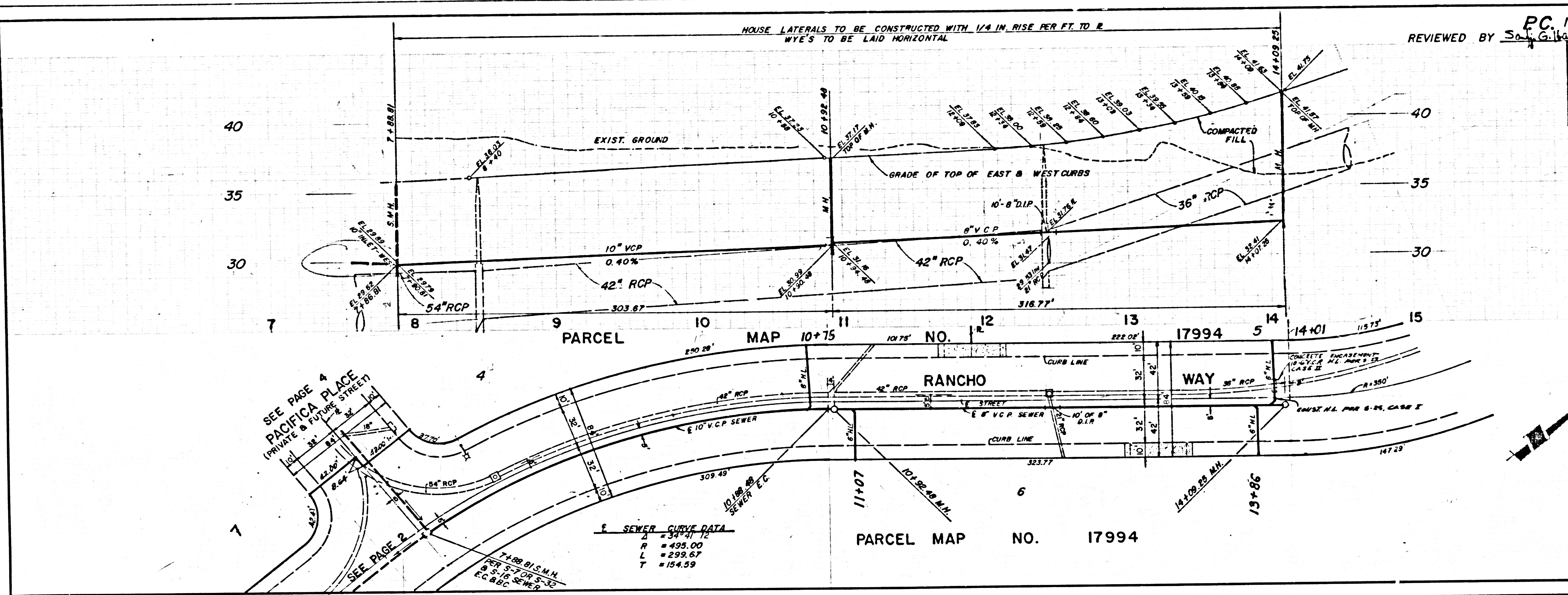
THE FOLLOWING LATEST REVISED STANDARD PLANS ON FILE IN THE OFFICE OF THE DEPARTMENT OF PUBLIC WORKS SHALL APPLY TO THE CONSTRUCTION OF THIS PROJECT:

LEGS IN	0-1
MINIMUM PUBLIC SAFETY REQUIREMENTS	0-2
BRICK MANHOLE	0-3
STANDARD MANHOLE STEP	0-7
RECORDS FOR SEWER PIPE	0-8
CREASING AND ENCASUREMENT	0-9
WYE OR TEE SUPPORT	0-10
ALLOWABLE TRENCH WIDTHS	0-11
LOCATING MANHOLES FRAME AND COVER	0-12
NON-REINFORCED PRECAST CONCRETE MANHOLE	0-13
SHALLOW MANHOLE	0-14
PRECAST CONCRETE SHALLOW MANHOLE	0-15
RECTANGULAR MANHOLE FRAME & COVER	0-16
SPECIAL HOUSE LATERALS	0-17

COUNTY OF LOS ANGELES, CALIFORNIA  
 THOMAS A. TIDEMANSON DIRECTOR OF PUBLIC WORKS  
 CHARLES W. CARRY CHIEF ENGINEER  
 APPROVED *[Signature]* 7/15/87  
 CHECKED *[Signature]* 7/15/87  
 REG. C.E. NO. 1884  
 LENOX BLDG. DIST. 7



P.C. 10562 PAGE 2  
 REVIEWED BY: *[Signature]* DATE 7-14-87  
 NO L.A. CO. CHARGE FOR CONNECTIONS  
 SEE COUNTY SANITATION DISTRICTS FOR SPECIAL CONNECTION CHARGES



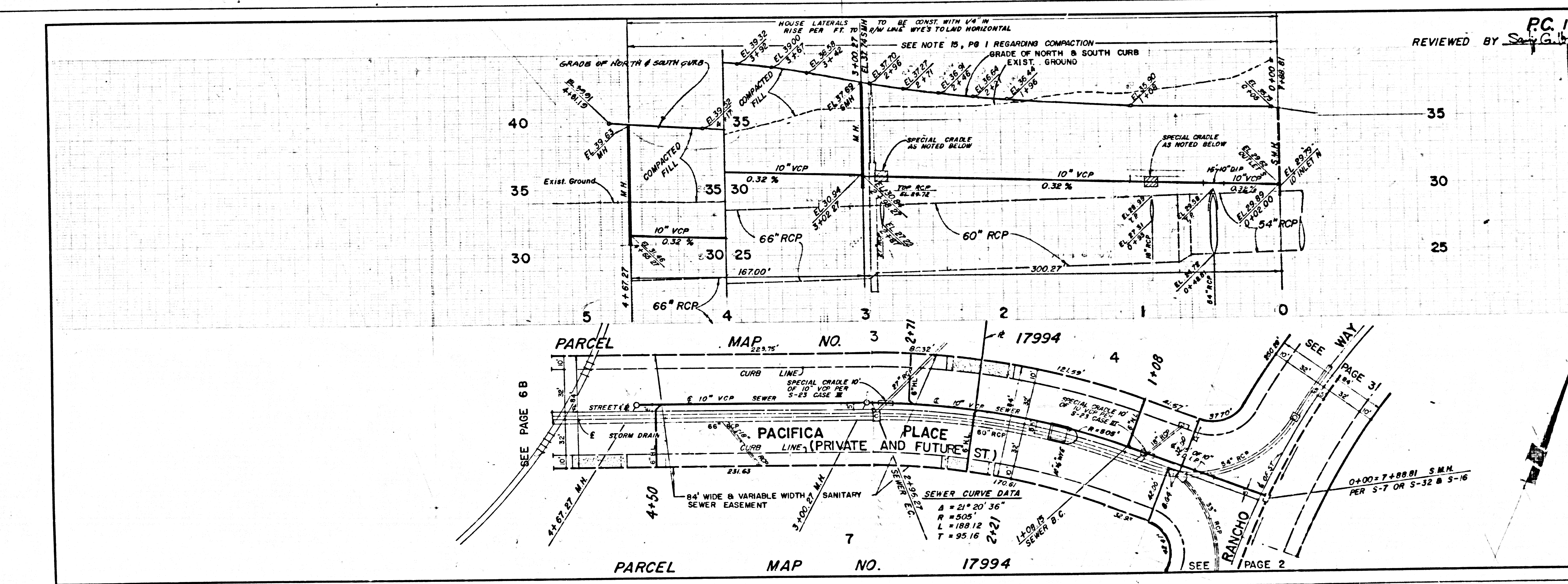
PC 10562 PAGE 3  
 REVIEWED BY *Sally G. [Signature]* DATE 7-14-87  
 NO L.A. CO. CHARGE FOR CONNECTIONS  
 SEE COUNTY SANITATION DISTRICTS FOR SPECIAL CONNECTION CHARGES

51823

SEWER CURVE DATA  
 Δ = 34° 41' 12"  
 R = 495.00'  
 L = 299.67'  
 T = 154.59'

PARCEL MAP NO. 17994

SEE PAGE 4  
 PACIFICA PLACE  
 (PRIVATE & FUTURE STREET)  
 SEE PAGE 2



PC 10562 PAGE 4  
 REVIEWED BY *Sally G. [Signature]* DATE 7-14-87  
 NO L.A. CO. CHARGE FOR CONNECTIONS  
 SEE COUNTY SANITATION DISTRICTS FOR SPECIAL CONNECTION CHARGES

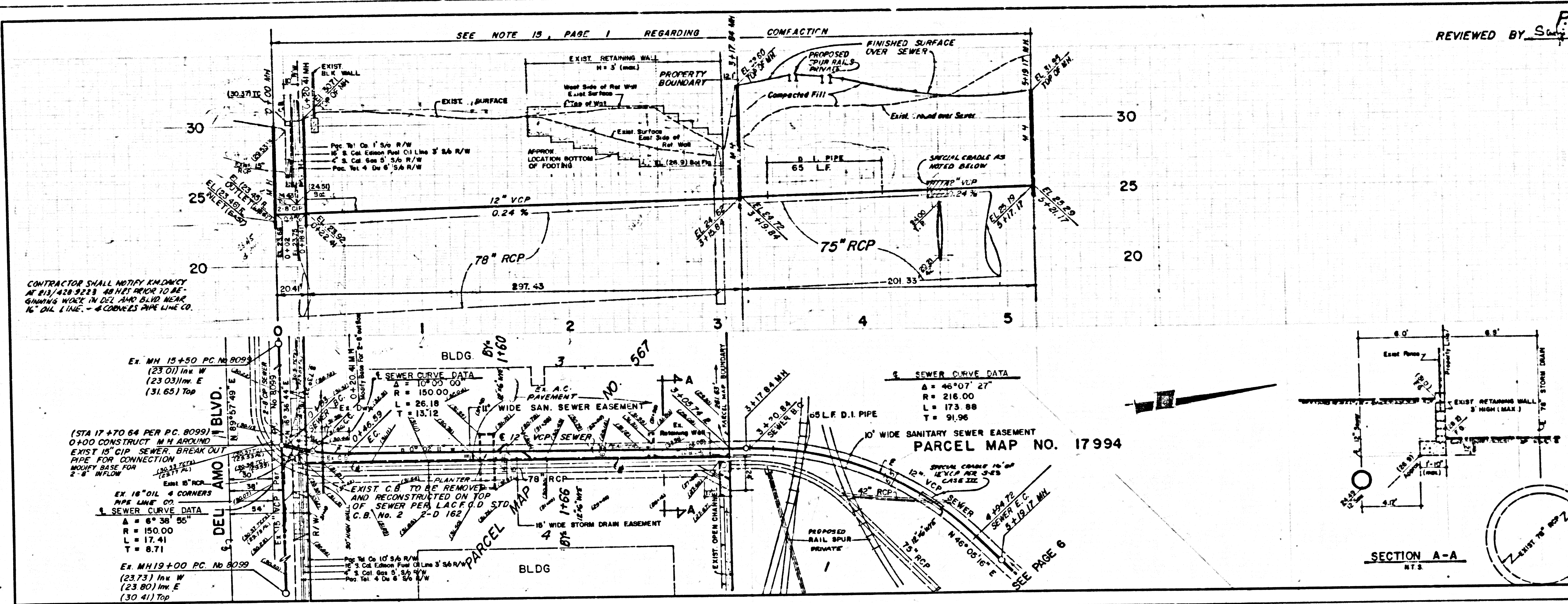
51824

SEWER CURVE DATA  
 Δ = 21° 20' 36"  
 R = 505'  
 L = 188.12'  
 T = 95.16'

PARCEL MAP NO. 17994

SEE PAGE 6B  
 SEE WAY  
 SEE PAGE 31

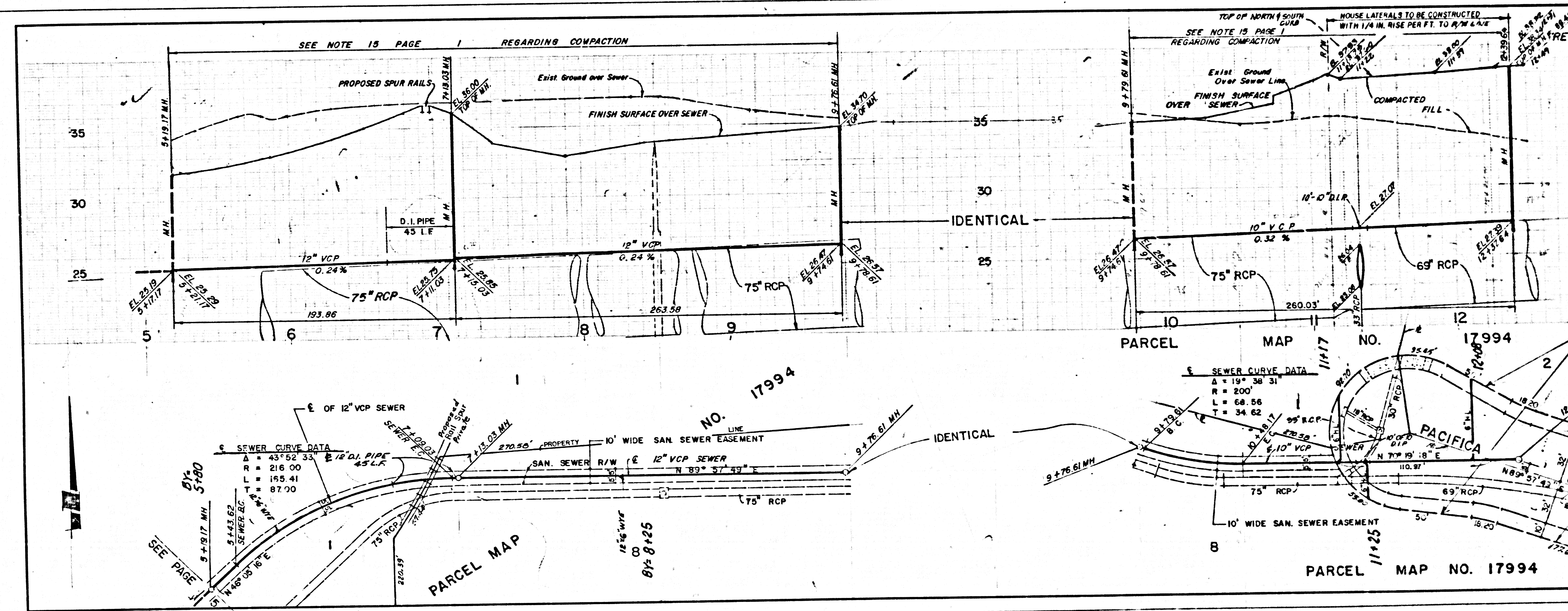
5201 09 AERT1 .OM .M9



PC 10582 PAGE 5  
 REVIEWED BY *Sanjay G. ...* DATE 7-13-87  
 NO L.A. CO. CHARGE FOR CONNECTIONS  
 SEE COUNTY SANITATION DISTRICTS FOR SPECIAL CONNECTION CHARGES

51825

5201 09 A8ET1 .0M .M.P



PC 10582 PAGE 6  
 REVIEWED BY *Sanjay G. ...* DATE 7-13-87  
 NO L.A. CO. CHARGE FOR CONNECTIONS  
 SEE COUNTY SANITATION DISTRICTS FOR SPECIAL CONNECTION CHARGES

51826