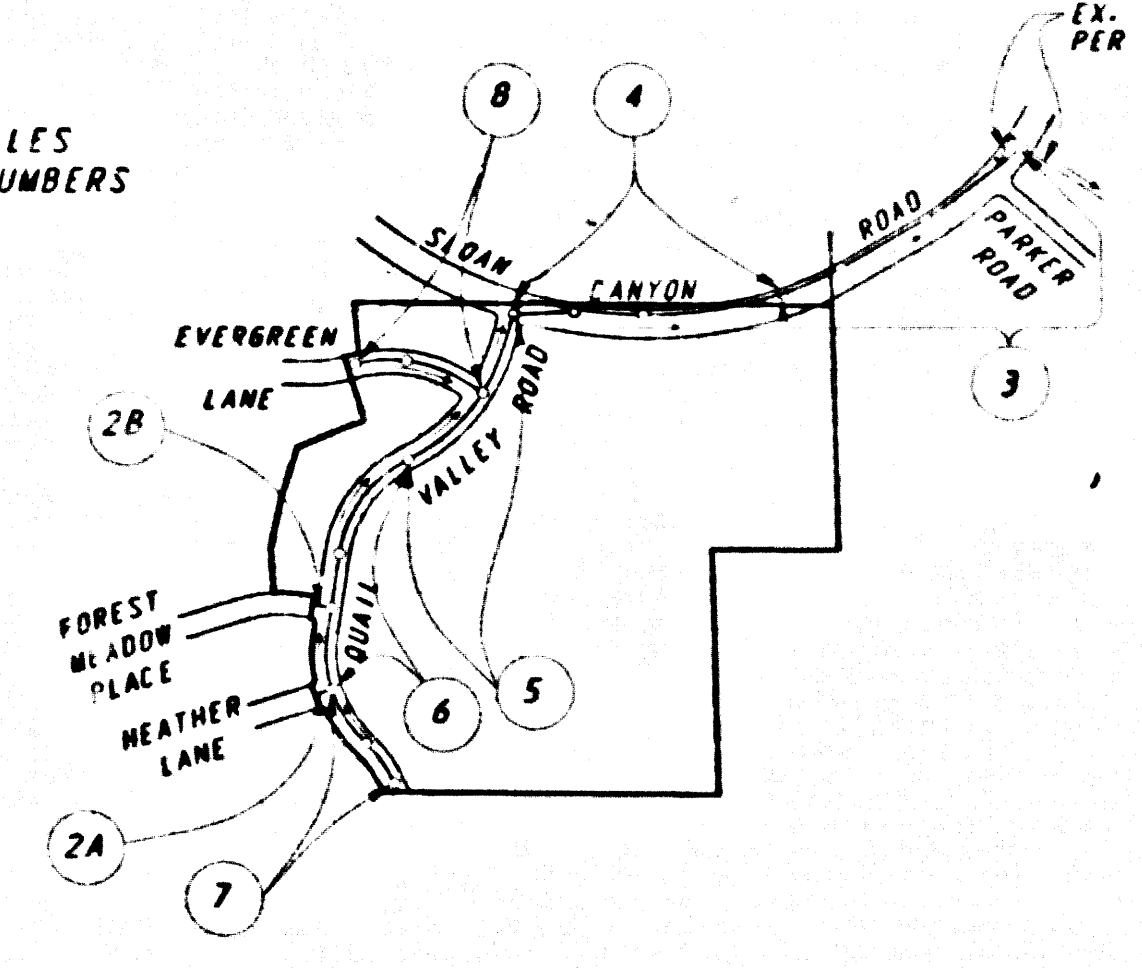


B.M. CL 3988 ELEV. 1184.662  
 U.S. & 65 HIGHWAY COR BRIDGE #8 1978, 17 FT W.C.V.  
 PARCEL #2 & 24 17 E. GOLDEN STATE PARKWAY  
 MAP 1219 1970  
 NEWHALL QUAD. 1983

NOTE: NUMBERS IN CIRCLES  
 INDICATE PAGE NUMBERS



INDEX MAP  
 P.C. NO. 10569  
 TRACT NO. 44422  
 SCALE: 1" = 600'

REVISION NO. 1  
 AUG. 20, 1987  
 PG. 4 CHANGE M.H.'S LOCATION FROM STA. 16+29.24 TO STA. 15+08.77 & FROM STA. 15+26.83 TO STA. 15+00.14  
 CHANGE GRADE OF S.S. PIPE BETWEEN STA. 15+02.77 & STA. 15+00.14  
 PG. 5 CHANGE M.H. LOCATION FROM STA. 1+29.53 TO STA. 1+35.80  
 APPROVED: *[Signature]*  
 DEPARTMENT OF PUBLIC WORKS

**DOUBLE SCALE**

**CONSTRUCTION NOTES: (CONT.)**

- 11 ALL JOINTS BETWEEN CAST IRON PIPE AND VITRIFIED CLAY PIPE SHALL BE MADE WITH A RUBBER GLEVE JOINT, TYPE "C" OR "D", (WITH BUSHING IF NECESSARY) PER STANDARD SPECIFICATIONS, SECTION 200-2
- 12 SEWERS TO BE TESTED FOR LEAKAGE PER SECTION 308 1-4 OF THE STANDARD SPECIFICATIONS AND SPECIAL PROVISIONS.
- 13 RESURFACE ALL TRENCHES WITHIN PAVED AREAS TO MEET L. A. COUNTY PUBLIC WORKS OR CALIFORNIA STATE HIGHWAY REQUIREMENTS IN ACCORDANCE WITH PERMITS.
- 14 FULL COMPLIANCE WITH SECTION 308 1-3 4 OF THE STANDARD SPECIFICATIONS WILL BE REQUIRED FOR BACKFILL IN STREETS. CERTIFICATION OF BACKFILL COMPACTION AND SAND EQUIVALENTS BY A QUALIFIED, REGISTERED TESTING LABORATORY SHALL BE PROVIDED BY THE PERMITTEE PRIOR TO THE ISSUANCE OF A CERTIFICATE OF PARTIAL ACCEPTANCE.
- 15 SPECIAL BACKFILL IN CASHEMENT CONSTRUCTION: (A) BACKFILL TRENCH AND REPLACE OTHER EARTH SO AS TO ACHIEVE THE NATURAL OR FINISHED GRADE AND SLOPES SHOWN ON THE GRADING PLAN APPROVED FOR THIS DEVELOPMENT BY THE LAND DEVELOPMENT DIVISION. (B) ALL BACKFILL AND EARTH REPLACED SHALL BE COMPACTED TO A MINIMUM OF 90% OF MAXIMUM DENSITY PER A.S.T.M. STD. METHOD OF TEST D998.587 AS MODIFIED. ACCEPTABLE CERTIFICATION OF SUCH COMPACTION SHALL BE SUBMITTED TO THE CONSTRUCTION DIVISION, DEPT. OF PUB. WORKS.
- 16 VYE BRANCHES ONLY MAY BE USED FOR CONNECTIONS TO MAIN LINE SEWER IF A B.S.C.P. IS USED.
- 17 ALL JOINTS BETWEEN CAST IRON PIPE AND A B.S.C.P. SHALL BE MADE WITH APPROVED FITTINGS.
- 18 FULL COMPLIANCE WITH PART IV. OF THE SPECIAL PROVISIONS IS REQUIRED FOR THE INSTALLATION OF A B.S. COMPOSITE PIPE AND A B.S. SOLID WALL HOUSE LATERALS.
- 19 MANHOLE WATER STOP GASKETS AND CLAMPS ARE REQUIRED FOR THE CONNECTION OF A B.S. COMPOSITE PIPE TO MANHOLE STRUCTURES.
- 20 A B.S. SOLID WALL PIPE MUST BE USED FOR VYE AND HOUSE LATERAL CONNECTIONS TO A B.S. COMPOSITE MAINLINE SEWER PIPE.
- 21 THREE DEGREE DEFLECTION COUPLERS SHOULD BE USED TO ACCOMPLISH SLOPE OF CURVATURE LESS THAN 380.
- 22 A B.S. COMPOSITE PIPE SHALL BE BEDDED IN CONFORMANCE WITH THE TABLE IN SECTION B 3 1 OF PART IV. OF SPECIAL PROVISIONS.
- 23 NO CONNECTIONS FOR DISPOSAL OF INDUSTRIAL WASTE IS ALLOWED IF A B.S. COMPOSITE PIPE IS USED.
- 24 SEWER LINE CURVATURE SHALL NOT BE ACHIEVED BY PULLING OF JOINTS OR BEVELING PIPE ENDS WHEN USING PLASTIC PIPE INCLUDING A B.S. COMPOSITE PIPE.
- 25 ALL VYE AND/OR HOUSE LATERALS ARE TO BE LOCATED AT LEAST FIVE FEET APART AND WHEN POSSIBLE NOT CLOSER THAN FIVE FEET TO ANY MANHOLE.
- 26 A B.S. SOLID WALL PIPE IS NOT ACCEPTABLE FOR USE AS MAINLINE SEWER.

NO CONNECTION FOR THE DISPOSAL OF INDUSTRIAL WASTES SHALL BE MADE TO SEWERS SHOWN ON THESE DRAWINGS UNTIL A PERMIT FOR INDUSTRIAL WASTEWATER DISCHARGE HAS BEEN ISSUED BY THE SANITATION DISTRICTS FOR SAID CONNECTION.

BEFORE BREAKING INTO OR CONSTRUCTION ON A COUNTY SANITATION DISTRICT SEWER AND PRIOR TO FINAL ACCEPTANCE OF THE PROJECT, SANITATION DISTRICT INSPECTOR SHALL BE NOTIFIED BY PHONE (818) 962-8605 SO THAT REQUIRED INSPECTION CAN BE MADE.  
 LOTS 2-5, 7-8, 10, 11, 12-14, 16-22, 24-29, 31, 33, 35-37, 39, & 40 OF TRACT NO. 44422 AND LOTS 14, 15, 17, 18, 19, & 20 OF TRACT NO. 44423 MAY REQUIRE THE INSTALLATION OF BACKWATER VALVES.

**GENERAL NOTES:**

- 1 ELEVATIONS ARE IN FEET ABOVE U.S.C.C.G.S. SEA LEVEL DATUM OF 1929
- 2 NO REVISIONS SHALL BE MADE IN THESE PLANS WITHOUT THE APPROVAL OF THE DIRECTOR OF PUBLIC WORKS
- 3 NO REPRESENTATIVE OF THE DEPARTMENT OF PUBLIC WORKS WILL SURVEY OR LAY OUT ANY PORTION OF THE WORK
- 4 GRADES TO WHICH THIS IMPROVEMENT IS TO BE CONSTRUCTED ARE SHOWN ON PLANS AND PROFILES
- 5 GRADE POINTS FOR TOP OF CURB, CENTER LINE OF STREETS, OR CENTER LINE OF ALLEYS ARE SHOWN BY CIRCLES ON PROFILES. AT ALL POINTS BETWEEN DESIGNATED POINTS THE GRADE SHALL BE ESTABLISHED SO AS TO CONFORM TO A STRAIGHT LINE DRAWN BETWEEN SAID DESIGNATED POINTS
- 6 THE PRIVATE ENGINEER SHALL FURNISH THE DEPARTMENT OF PUBLIC WORKS WITH GRADE SHEETS AND STATIONING FOR ALL HOUSE LATERALS AND "Y" OR "T" BRANCHES AND SHALL PROVIDE STAKES FOR THEM AT THEIR PROPER LOCATIONS WITH STATIONING PLAINLY MARKED. ALL HOUSE LATERALS SHALL BE CONSTRUCTED IN A STRAIGHT ALIGNMENT AT RIGHT ANGLES FROM THE MAIN LINE SEWER EXCEPT AS SHOWN ON THE PLANS. HOUSE LATERALS FROM CHIMNEYS SHALL NOT HAVE AN ANGLE OF LESS THAN 45 DEGREES WITH THE MAIN LINE SEWER. ANY CHANGE IN ALIGNMENT SHALL BE REQUESTED IN WRITING BY THE PRIVATE ENGINEER
- 7 THE PRIVATE ENGINEER SHALL FURNISH THE HOUSE LATERAL DEPTH AT THE PROPERTY LINE BELOW THE TOP OF THE CURB ELEVATION FOR EACH HOUSE LATERAL ON THE GRADE SHEET
- 8 BEFORE WORK CAN BE STARTED, THE CONTRACTOR MUST OBTAIN A PERMIT TO EXCAVATE IN COUNTY STREETS FROM THE L. A. COUNTY CONST. DIV. OF THE DEPARTMENT OF PUBLIC WORKS. PERMIT OFFICE NO. 8, AND PAY A FEE TO THE DIRECTOR OF PUBLIC WORKS, 2050 ALCAZAR STREET, LOS ANGELES, CA. 90033, TO COVER THE COST OF CONSTRUCTION INSPECTION AND RECORD PLANS
- 9 IF WORK IS TO BE DONE IN STATE HIGHWAY, A PERMIT MUST BE OBTAINED FROM THE STATE OF CALIFORNIA DIVISION OF HIGHWAYS, 130 SOUTH SPRING STREET, LOS ANGELES, CALIFORNIA. APPROVAL OF THIS PLAN BY THE COUNTY OF LOS ANGELES DOES NOT CONSTITUTE A REPRESENTATION AS TO THE ACCURACY OF THE LOCATION OF OR THE EXISTENCE OR NON-EXISTENCE OF ANY UNDERGROUND UTILITY PIPE, OR STRUCTURE WITHIN THE LIMITS OF THIS PROJECT. THIS NOTE APPLIES TO ALL PAGES
- 10 REFER TO SECTION 7 OF 4.1 OF THE STANDARD SPECIFICATIONS, REGARDING SAFETY ORDERS
- 11 PRIOR TO THE ISSUANCE OF THE REQUIRED SEWER CONSTRUCTION PERMIT, THE CONTRACTOR SHALL OBTAIN AND FILE WITH THE DEPARTMENT OF PUBLIC WORKS COPIES OF A PERMIT TO EXCAVATE IN COUNTY STREETS FROM THE LOS ANGELES COUNTY CONST. DIV. OF THE DEPARTMENT OF PUBLIC WORKS, A PERMIT FOR EXCAVATIONS AND TRENCHES FROM THE STATE OF CALIFORNIA, DIVISION OF INDUSTRIAL SAFETY AND A CERTIFICATE OF WORKER'S COMPENSATION INSURANCE WITH THE DEPARTMENT OF PUBLIC WORKS, 2050 ALCAZAR STREET, LOS ANGELES, CALIFORNIA 90033, NAMED AS THE CERTIFICATE HOLDER TO BE NOTIFIED 30 DAYS PRIOR TO CANCELLATION OF POLICY.

**CONSTRUCTION NOTES:**

- 1 WORK SHALL BE CONSTRUCTED ACCORDING TO THE STANDARD SPECIFICATIONS FOR PUBLIC WORKS (CONSTRUCTION 11905 EDITION WITH 1980 SUPPLEMENTS) & DEPARTMENT OF PUBLIC WORKS SPECIAL PROVISIONS FOR THE CONSTRUCTION OF SANITARY SEWERS DATED SEPT. 21, 1978 AND SHALL BE PROSECUTED ONLY IN THE PRESENCE OF THE DEPARTMENT OF PUBLIC WORKS
- 2 THE CONTRACTOR SHALL NOTIFY THE CONSTRUCTION DIVISION BY TELEPHONE 200-8201, AT LEAST TWENTY-FOUR HOURS BEFORE STARTING ANY WORK UNDER THIS CONTRACT
- 3 HOUSE LATERALS TO BE CONSTRUCTED WITH INVERTS AT PROPERTY LINE 8 FEET BELOW CURB GRADE EXCEPT AS NOTED
- 4 VYE OR TEE BRANCHES MAY BE USED FOR CONNECTIONS TO MAINLINE SEWERS EXCEPT AS NOTED
- 5 ALL STRUCTURES SHALL BE EITHER BRICK MANHOLES PER S-3 OR PRECAST CONCRETE MANHOLES AS PER S-3B, EXCEPT AS NOTED
- 6 PROVIDE STAKES ON THE PROPERTY LINE OR PROPERTY LINES PRODUCED AT RIGHT ANGLES TO THE SEWER LINE AT THE CENTER LINE OF EACH MANHOLE
- 7 MANHOLE TOPS IN UNIMPROVED RIGHTS OF WAY TO BE SIX INCHES ABOVE FINISHED GRADE
- 8 VITRIFIED CLAY PIPE JOINTS SHALL BE TYPE "O" OR "P" PER STANDARD SPECIFICATIONS SECTION 200-2
- 9 IF A POWER POLE IS WITHIN THREE FEET OF THE SEWER, THE SEWER SHALL BE ENCASED, PER S-23, CASE 11, TWO FEET ON EACH SIDE FROM THE POINT OF INTERFERENCE
- 10 IF DURING THE COURSE OF CONSTRUCTION IT IS DETERMINED THAT THERE IS LESS THAN FOUR FEET OF COVER OVER THE TOP OF A MAIN LINE OR HOUSE LATERAL SEWER WHICH IS NOT INDICATED ON THE PLANS, THE PIPE SHALL BE ENCASED PER S-23, CASE 11 UNLESS OTHERWISE APPROVED BY THE DIRECTOR OF PUBLIC WORKS

PROFILE, ALIGNMENT AND GRADE OF PAGE 1

**SANITARY SEWERS**

TO BE CONSTRUCTED IN

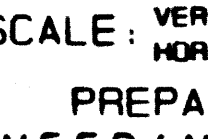
TRACT NO. 44422

PRIVATE CONTRACT NO. 10569

INDEX: 517-17

W.S. 17

4 SHEETS: 8 PAGES



AUGUST 11, 1986

PREPARED IN THE OFFICES OF

**ENGINEERING SERVICE CORPORATION**

6017 BRISTOL PARKWAY, FOX HILLS BUSINESS PARK  
 COLVER CITY, CALIF. 92328 TEL: (951) 1219-417-7999

BY: *[Signature]*  
 REG. C.E. NO. 13095

THE FOLLOWING LATEST REVISED STANDARD PLANS ON FILE IN THE OFFICE OF THE PUBLIC WORKS SHALL APPLY IN THE CONSTRUCTION OF THIS PROJECT.

LEGEND	S-1
MINIMUM PUBLIC SAFETY REQUIREMENTS	S-2
BRICK MANHOLE	S-3
STANDARD MANHOLE STOP	S-4
BEDDING FOR SEWER PIPE	S-17
CRADING AND ENCASUREMENT	S-23
VYE OR TEE SUPPORT	S-26
ALLOWABLE TRENCH WIDTHS	S-33
LOCKING MANHOLE FRAME AND COVER	S-35
NON-REINFORCED PRECAST CONCRETE MANHOLE	S-36

COUNTY OF LOS ANGELES, CALIFORNIA

THOMAS A. TIDEMANSON, DIRECTOR OF PUBLIC WORKS

APPROVED: *[Signature]* 4/1/87

CHECKED: *[Signature]* 4/1/87

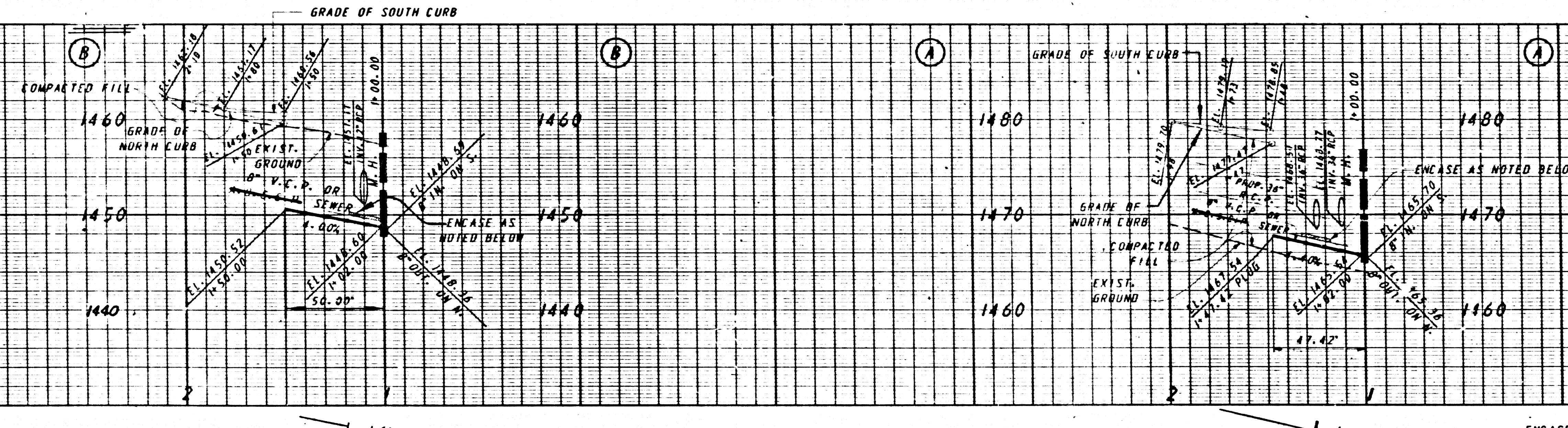
SANTA CLARITA VALLEY, BLOS. DIST. 4-2

P.C. 10569 PAGE 2  
 REVIEWED BY: *[Signature]* DATE: 8-16-87

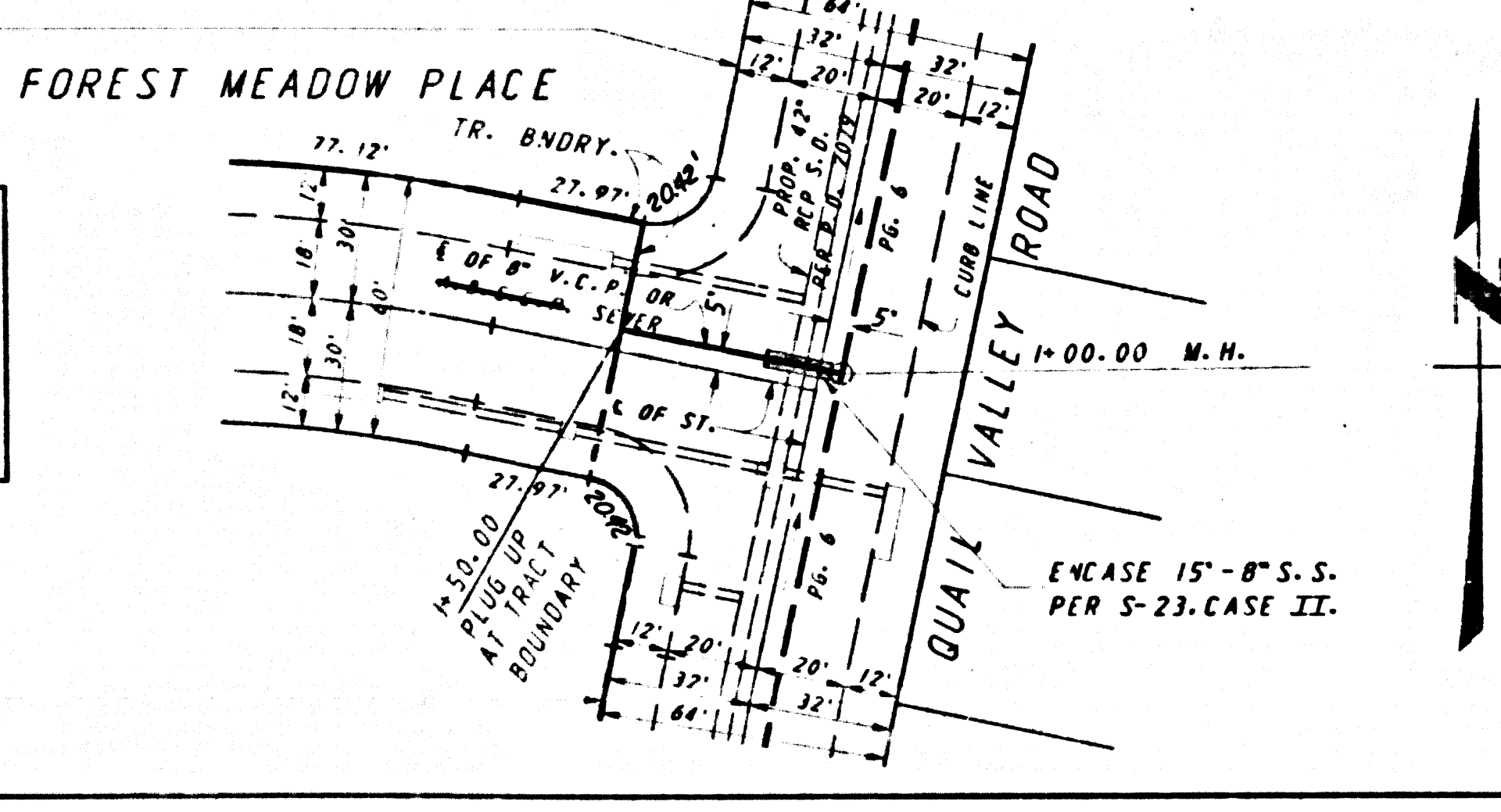
**DOUBLE SCALE**

NO L.A. CO. CHARGE FOR CONNECTIONS

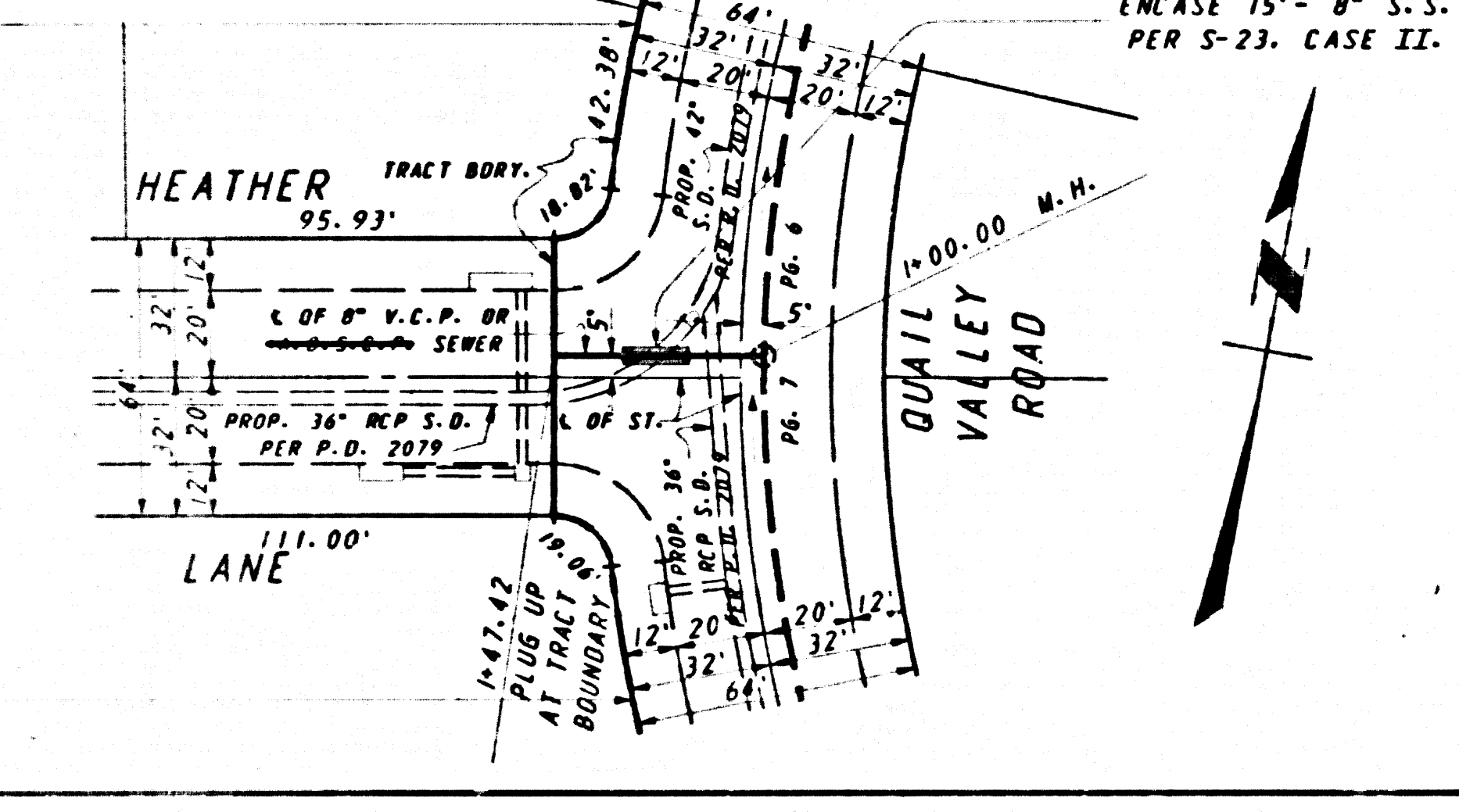
SEE COUNTY SANITATION DISTRICTS FOR SPECIAL CONNECTION CHARGES



ISSUE NO PERMITS. MAIN LINE MUST BE EXTENDED AND M.H. CONSTRUCTED

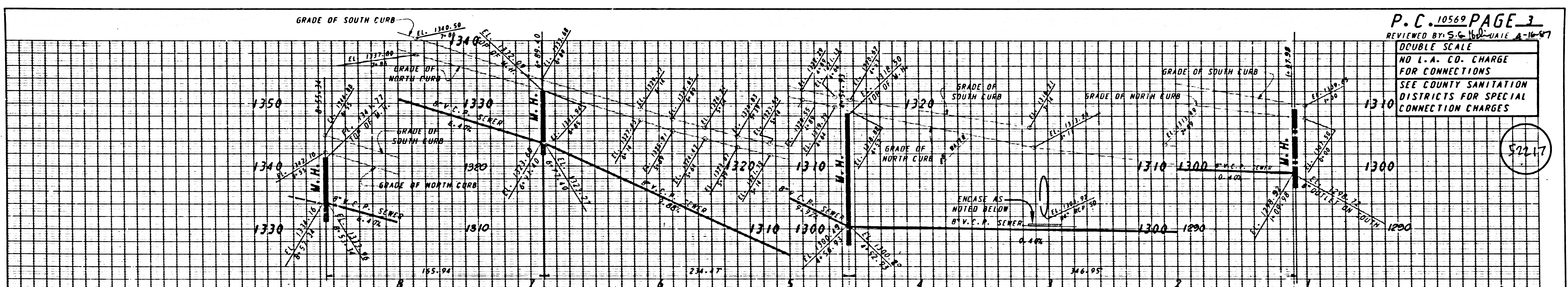


ISSUE NO PERMITS. MAIN LINE MUST BE EXTENDED AND M.H. CONSTRUCTED



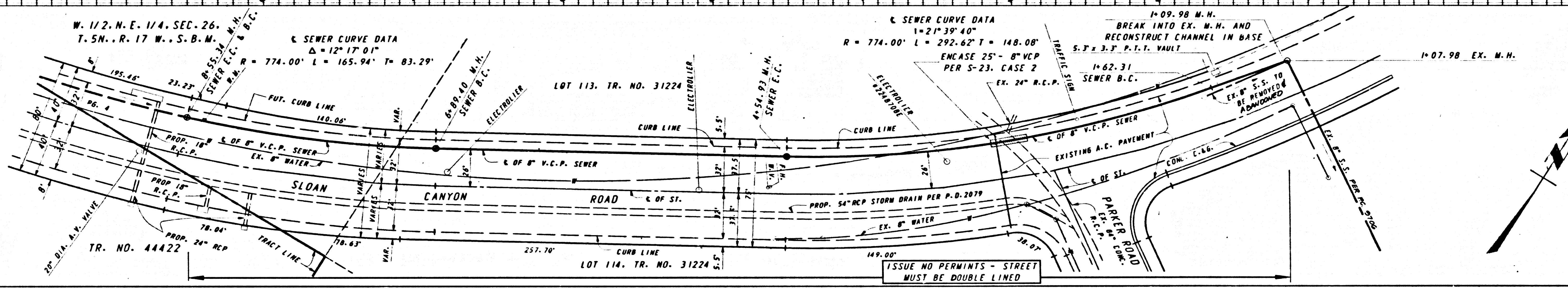
52216

TRACT NO. 44422 QM T3ART

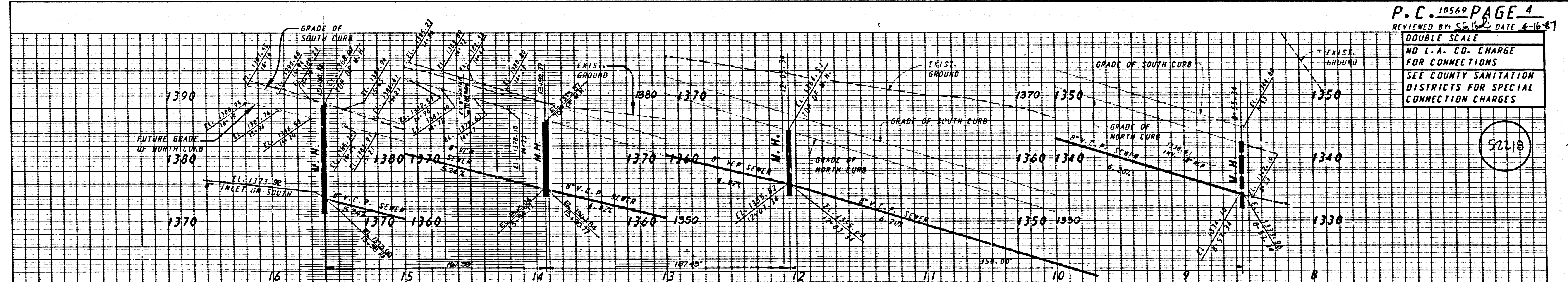


P.C. 10569 PAGE 3  
 REVIEWED BY S.C. W. DATE 4-16-87  
 DOUBLE SCALE  
 NO L.A. CO. CHARGE FOR CONNECTIONS  
 SEE COUNTY SANITATION DISTRICTS FOR SPECIAL CONNECTION CHARGES

52217

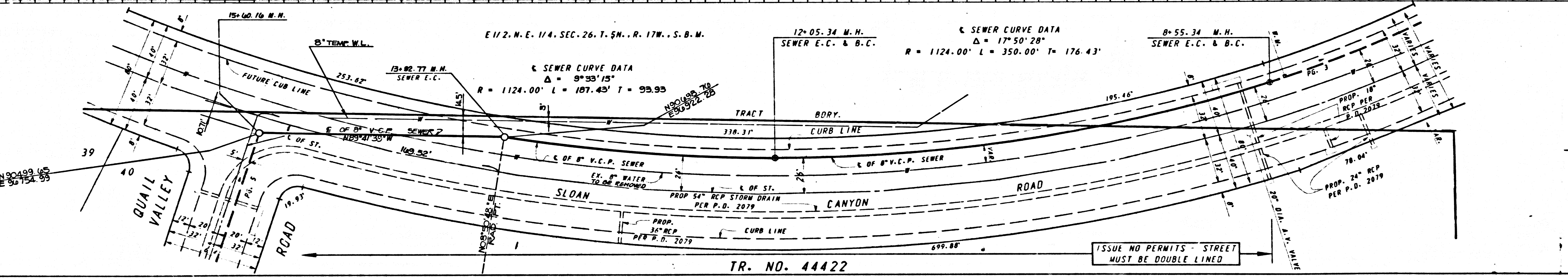


ISSUE NO PERMITS - STREET MUST BE DOUBLE LINED



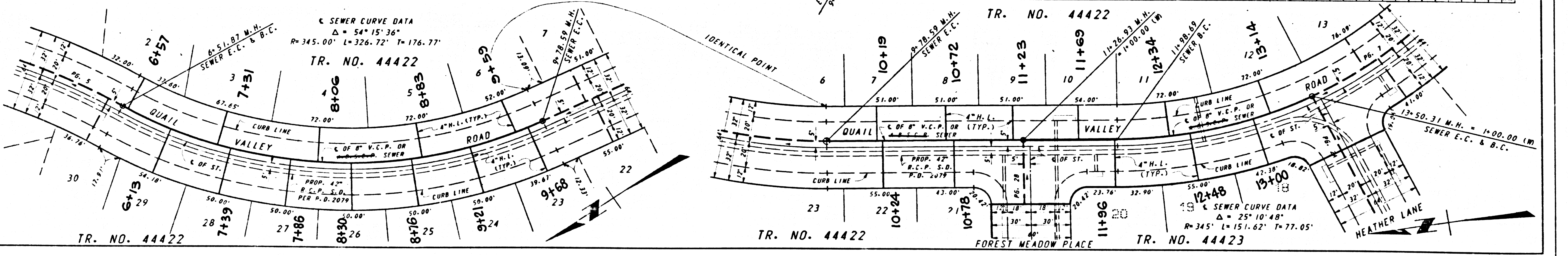
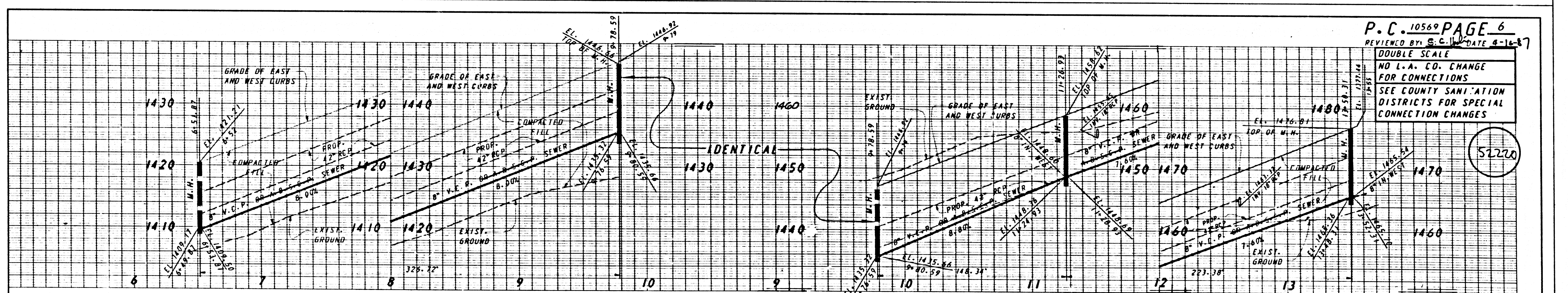
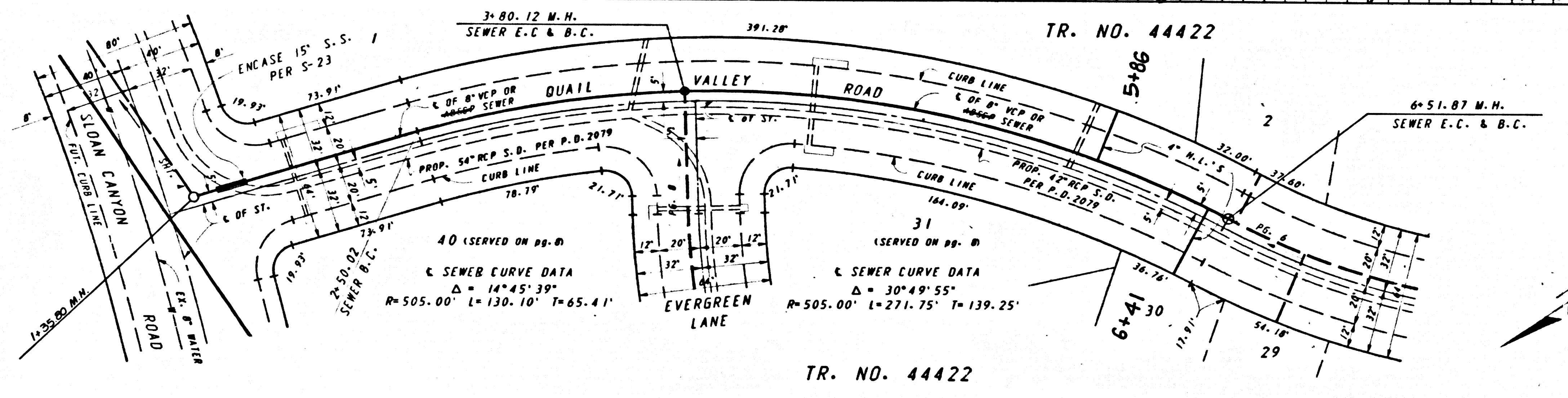
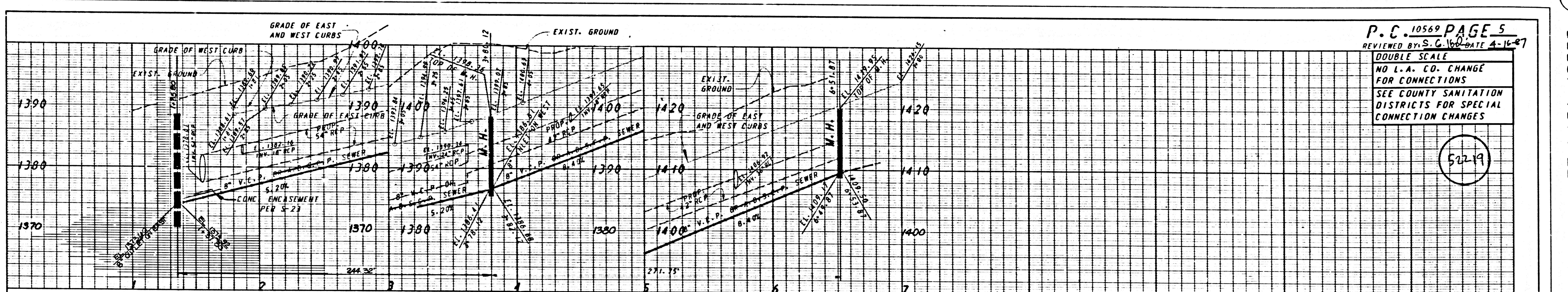
P.C. 10569 PAGE 4  
 REVIEWED BY S.C. W. DATE 4-16-87  
 DOUBLE SCALE  
 NO L.A. CO. CHARGE FOR CONNECTIONS  
 SEE COUNTY SANITATION DISTRICTS FOR SPECIAL CONNECTION CHARGES

52218

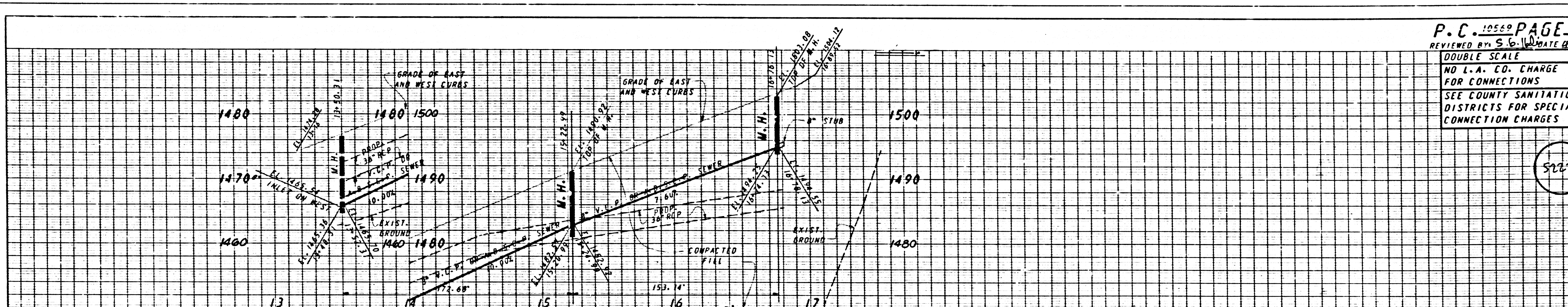


ISSUE NO PERMITS - STREET MUST BE DOUBLE LINED

5 88201 3 9 55444 ON T3ART

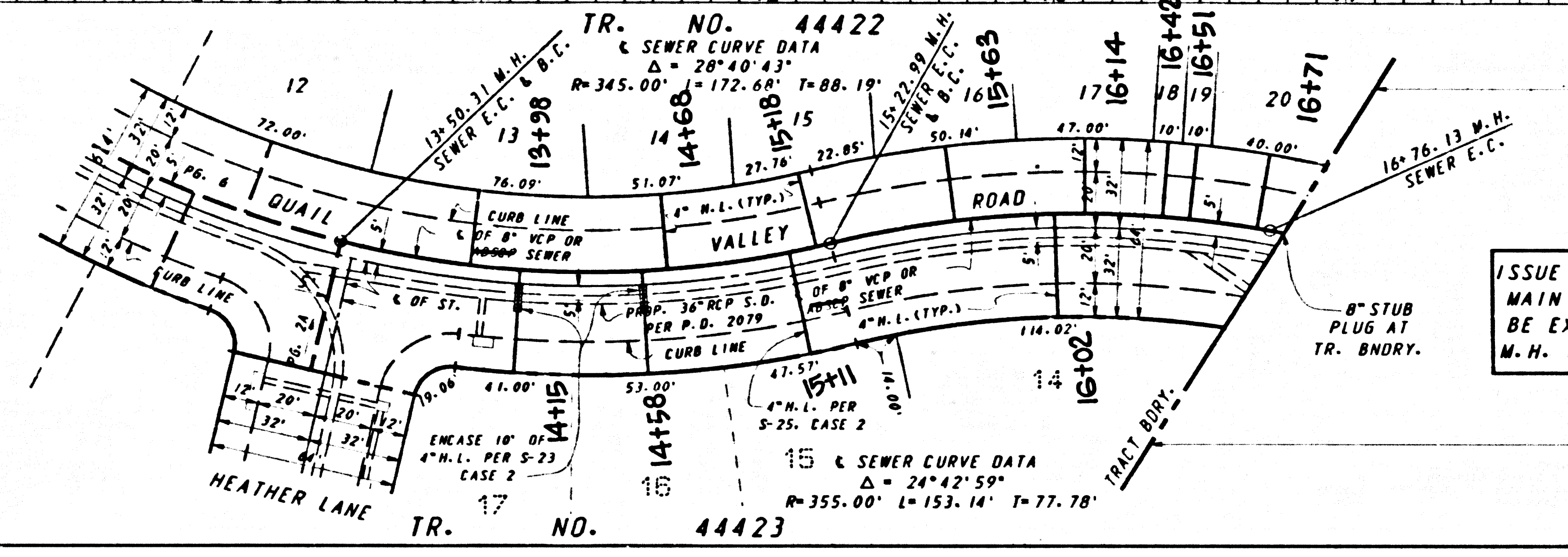


3 88207 J. P. SAAA DM TCART

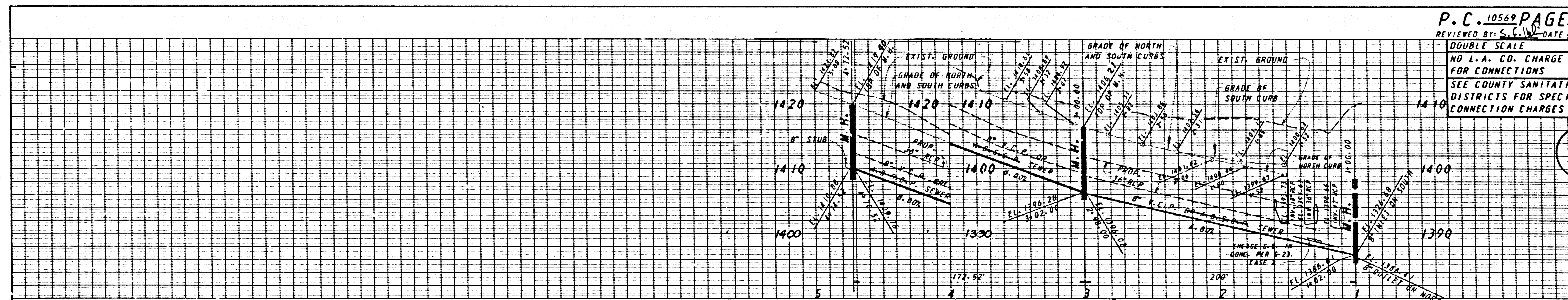
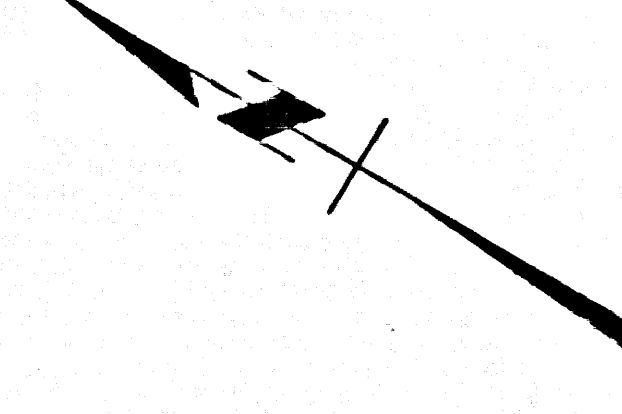


P.C. 10569 PAGE 7  
 REVIEWED BY S.C.W. DATE 8-16-87  
 DOUBLE SCALE  
 NO L.A. CO. CHARGE  
 FOR CONNECTIONS  
 SEE COUNTY SANITATION  
 DISTRICTS FOR SPECIAL  
 CONNECTION CHARGES

57221

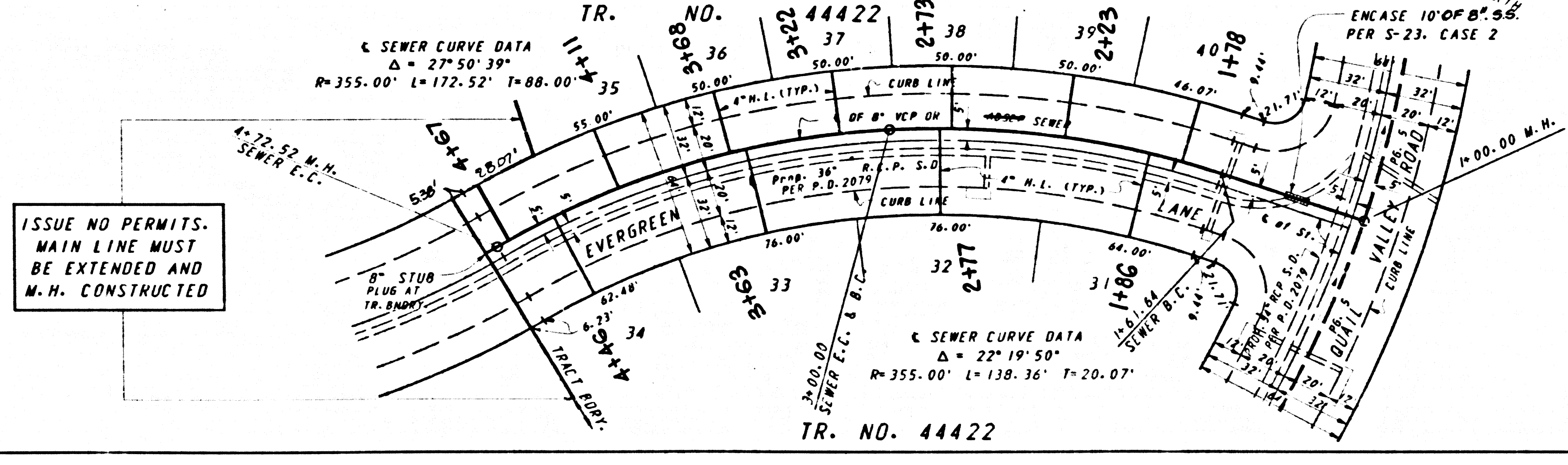


ISSUE NO PERMITS.  
 MAIN LINE MUST  
 BE EXTENDED AND  
 M.H. CONSTRUCTED

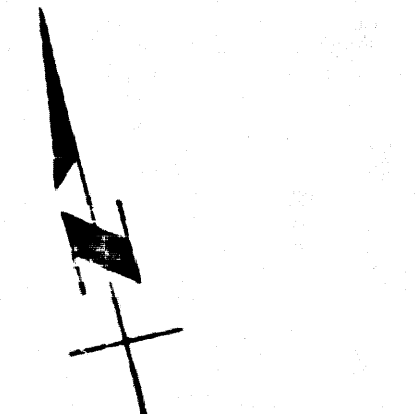


P.C. 10569 PAGE 8  
 REVIEWED BY S.C.W. DATE 8-16-87  
 DOUBLE SCALE  
 NO L.A. CO. CHARGE  
 FOR CONNECTIONS  
 SEE COUNTY SANITATION  
 DISTRICTS FOR SPECIAL  
 CONNECTION CHARGES

57222



ISSUE NO PERMITS.  
 MAIN LINE MUST  
 BE EXTENDED AND  
 M.H. CONSTRUCTED



4 88201 . C. P. 55444 . ON T3ART