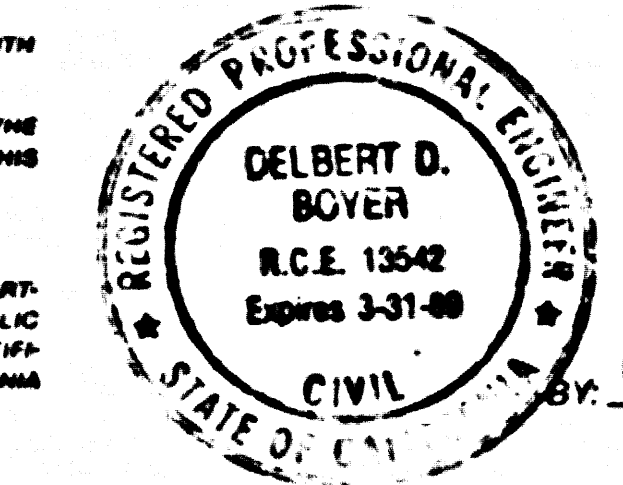


SANITARY SEWERS
TO BE CONSTRUCTED IN

TRACT NO. 43534

PRIVATE CONTRACT NO. 10571
INDEX 1-59

2 SHEETS, 3 PAGES



SCALE: HORIZ. 1" = 40'
VERT. 1" = 4'
MAY 6, 1986
PREPARED IN THE OFFICES OF
BOYER ENGINEERING CO. INC.
2330 AIRWAY AVE. B-2 COSTA MESA, CA. 92626-0020
REG. C.E. NO. 13542
EXPIRES 2-21-89

51673

1

17201 99

REC'D DM AT

DOUBLE SCALE

CONSTRUCTION NOTES CONT.

16. FULL COMPLIANCE WITH PART IV OF THE SPECIAL PROVISIONS IS REQUIRED FOR THE INSTALLATION OF A.B.S. COMPOSITE PIPE.
17. WHOLE WATER STOP GASKETS AND CLAMPS ARE REQUIRED FOR THE CONNECTION OF A.B.S. COMPOSITE PIPE TO MANHOLE STRUCTURES.
18. A.B.S. SOFT WALL PIPE MUST BE USED FOR WYE AND HOUSE LATERAL CONNECTIONS TO A.B.S. COMPOSITE MAINLINE SEWER PIPE.
19. A.B.S. COMPOSITE PIPE SHALL BE INSTALLED IN CONFORMANCE WITH THE TABLE IN SECTION 9-2.1 OF PART IV OF THE SPECIAL PROVISIONS.
20. THREE DEGREE DEFLECTION COUPLERS ARE REQUIRED FOR RADII OF CURVATURE LESS THAN 300 FEET WHEN USING 8" A.B.S. COMPOSITE PIPE.
21. NO CONNECTIONS FOR DISPOSAL OF INDUSTRIAL WASTE IS ALLOWED IF A.B.S. COMPOSITE PIPE IS USED.
22. SEWER LINE CURVATURE SHALL NOT BE ACHIEVED BY PULLING OF JOINTS OR REVELING PIPE ENDS WHEN USING PLASTIC PIPE INCLUDING A.B.S. COMPOSITE PIPE.
23. ALL WYES AND/OR HOUSE LATERALS ARE TO BE LOCATED BY AT LEAST FIVE FEET APART AND WHEN POSSIBLE NOT CLOSER THAN FIVE FEET TO ANY MANHOLE.
24. A.B.S. SOFT WALL PIPE IS NOT ACCEPTABLE FOR USE AS MAINLINE SEWER.
25. ONLY WYE BRANCHES ARE TO BE USED FOR CONNECTION TO A.B.S. COMPOSITE MAINLINE SEWER PIPE.

NO CONNECTION FOR THE DISPOSAL OF INDUSTRIAL WASTES SHALL BE MADE TO SEWERS SHOWN ON THESE DRAWINGS UNLESS A PERMIT FOR INDUSTRIAL WASTEWATER DISCHARGE HAS BEEN ISSUED BY THE SANITATION DISTRICTS FOR SAID CONNECTION.

BEFORE BREAKING INTO OR CONSTRUCTION ON A COUNTY SANITATION DISTRICT SEWER AND PRIOR TO FINAL ACCEPTANCE OF THE PROJECT, SANITATION DISTRICT INSPECTOR SHALL BE NOTIFIED BY PHONE (818) 962-8605 SO THAT REQUIRED INSPECTION CAN BE MADE.

GENERAL NOTES:

1. ELEVATIONS ARE IN FEET ABOVE 1825.4 B.S.M. SEA LEVEL DATUM OF 1985.
2. NO REVISIONS SHALL BE MADE IN THESE PLANS WITHOUT THE APPROVAL OF THE DIRECTOR OF PUBLIC WORKS.
3. NO REPRESENTATIVE OF THE DEPARTMENT OF PUBLIC WORKS WILL SURVEY OR LAY OUT ANY PORTION OF THE WORK.
4. GRADES TO WHICH THE DEPARTMENT OF PUBLIC WORKS WILL SURVEY OR LAY OUT ANY PORTION OF THE WORK SHALL BE ESTABLISHED AS 1" COMPASS TO A STRAIGHT LINE DRAWN BY THESE SAID DETAILED POINTS.
5. THE PRIVATE ENGINEER SHALL FURNISH THE HOUSE LATERAL DEPTH AT THE PROPERTY LINE BELOW THE TOP OF CURB ELEVATION FOR EACH HOUSE LATERAL ON THE GRADE SHEET.
6. BEFORE WORK CAN BE STARTED THE CONTRACTOR MUST OBTAIN A PERMIT TO EXCAVATE IN COUNTY STREETS FROM THE S.W.P.S.T. DIV. OF THE LOS ANGELES DEPARTMENT OF PUBLIC WORKS, PERMIT OFFICE NO. 1, 2, 3, AND PAY A FEE TO THE DIRECTOR OF PUBLIC WORKS, 800 S. VENTURA AVE., LOS ANGELES, CALIFORNIA 90017 TO COVER THE COST OF CONSTRUCTION INSPECTION AND RECORD PLANS.
7. IF WORKER POSSESSES A STATE HIGHWAY PERMIT MUST BE OBTAINED FROM THE STATE OF CALIFORNIA DIVISION OF HIGHWAY, 120 SOUTH SPRING STREET, LOS ANGELES, CALIFORNIA.
8. APPROVAL OF THIS PLAN BY THE COUNTY OF LOS ANGELES DOES NOT CONSTITUTE A REPRESENTATION AS TO THE ACCURACY OF THE LOCATION OF OR THE EXISTENCE OR NON-EXISTENCE OF ANY UNDERGROUND UTILITY PIPE OR STRUCTURE WITHIN THE LIMITS OF THE PROJECT. THIS NOTE APPLIES TO ALL PAGES.
9. REFER TO SECTION 7.18.4.1 OF THE STANDARD SPECIFICATIONS REGARDING SAFETY ORDERS.
10. PRIOR TO THE ISSUANCE OF THE REQUIRED SEWER CONSTRUCTION PERMIT THE CONTRACTOR SHALL OBTAIN AND FILE WITH THE DEPARTMENT OF PUBLIC WORKS COPIES OF A PERMIT TO EXCAVATE IN COUNTY STREETS FROM THE ROAD ELEMENT BY THE DEPARTMENT OF PUBLIC WORKS, A PERMIT FOR EXCAVATIONS AND TRENCHES FROM THE STATE OF CALIFORNIA, A DIVISION OF INDUSTRIAL SAFETY AND A CERTIFICATE OF WORKERS COMPENSATION INSURANCE WITH THE DEPARTMENT OF PUBLIC WORKS, 800 S. VENTURA AVE., LOS ANGELES, CALIFORNIA 90017, ROOM 518, BEARING AS THE CERTIFICATE HOLDER TO BE NOTIFIED 30 DAYS PRIOR TO CANCELLATION OF POLICY.

CONSTRUCTION NOTES:

1. WORK SHALL BE CONSTRUCTED ACCORDING TO THE STANDARD SPECIFICATIONS FOR PUBLIC WORKS CONSTRUCTION 1985 EDITION WITH THE FOLLOWING SUPPLEMENTS AND COUNTY ENGINEER SPECIAL PROVISIONS FOR THE CONSTRUCTION OF SANITARY SEWERS DATED JANUARY 28, 1986.
2. THE CONTRACTOR SHALL NOTIFY THE CONSTRUCTION DIVISION BY TELEPHONE, 226-8981, AT LEAST TWENTY-FOUR HOURS BEFORE STARTING ANY WORK UNDER THIS CONTRACT.
3. HOUSE LATERALS TO BE CONSTRUCTED WITH INVERTS AT PROPERTY LINE 8 FEET BELOW CURB GRADE EXCEPT AS NOTED.
4. WYE OR TEE BRANCHES MAY BE USED FOR CONNECTIONS TO MAINLINE SEWERS EXCEPT AS NOTED.
5. ALL STRUCTURES SHALL BE EITHER BRICK MANHOLES PER 9-3 OR PRECAST CONCRETE MANHOLES PER 9-3B, EXCEPT AS NOTED.
6. PROVIDE STAKES ON THE PROPERTY LINE OR PROPERTY LINES AT RIGHT ANGLES TO THE SEWER LINE AT THE CENTER LINE OF EACH MANHOLE.
7. MANHOLE TOPS IN UNIMPROVED AREAS OF 1/4" TO BE SIX INCHES ABOVE FINISHED GRADE.
8. WITHEDED CLAY PIPE JOINTS SHALL BE TYPE "D" OR "E" PER STANDARD SPECIFICATIONS SECTION 200-2.
9. BRICK MANHOLES SHALL BE THREE FEET DEEP. THE SEWER SHALL BE ENCASED PER 9-3B CASE # 2 TWO FEET ON EACH SIDE FROM THE JOINT OF INTERFERENCE.
10. IF DURING THE COURSE OF CONSTRUCTION IT IS DETERMINED THAT THERE IS LESS THAN FOUR FEET OF COVER OVER THE TOP OF A MAINLINE OR HOUSE LATERAL V.C.P. SEWER WHICH IS NOT HOODED ON THE PLANS, THE PIPE SHALL BE ENCASED PER 9-3B CASE # 1 UNLESS OTHERWISE APPROVED BY THE DIRECTOR OF PUBLIC WORKS.
11. ALL JOINTS BETWEEN CAST IRON PIPE AND WITHEDED CLAY PIPE SHALL BE MADE WITH A RUBBER SLEEVE JOINT, TYPE "D" OR "E", WITH BUSHING IF NECESSARY PER STANDARD SPECIFICATIONS SECTION 200-2.
12. SEWERS TO BE TESTED FOR LEAKAGE PER SECTION 200-1.4 OF THE STANDARD SPECIFICATIONS AND SPECIAL PROVISIONS.
13. REINFORCE ALL TRENCHES WITHIN PAVED AREAS TO MEET LOS ANGELES COUNTY PUBLIC WORKS OR CALIFORNIA STATE HIGHWAY REQUIREMENTS IN ACCORDANCE WITH PERMITS.
14. FULL COMPLIANCE WITH SECTION 200-1.3.2 OF THE STANDARD SPECIFICATIONS WILL BE REQUIRED FOR BACKFILL IN STREETS, CANTONMENTS OF BACKFILL CONSTRUCTION AND SAND ROVAL ENDS BY A COMPALED REGISTERED TESTING LABORATORY SHALL BE PROVIDED BY THE PERMITTEE PRIOR TO THE ISSUANCE OF A CERTIFICATE OF FINAL ACCEPTANCE.
15. SPECIAL BACKFILL IN EASEMENT CONSTRUCTION (A BACKFILL TRENCH AND REPLACE OTHER EARTH SO AS TO ACHIEVE THE NATURAL OR PREVIOUS GRADES AND SLOPES SHOWN ON THE GRADING PLAN APPROVED FOR THIS DEVELOPMENT BY THE LAND DEVELOPMENT DIVISION) ALL BACKFILL AND EARTH REFACE SHALL BE CONSTRUCTED TO A MINIMUM OF 90% OF MAXIMUM DENSITY PER ASTM METHOD OF TEST D953 AS MODIFIED ACCEPTABLE CERTIFICATION OF SUCH CONSTRUCTION SHALL BE SUBMITTED TO THE CONSTRUCTION DIVISION, DEPT. OF PUBLIC WORKS.

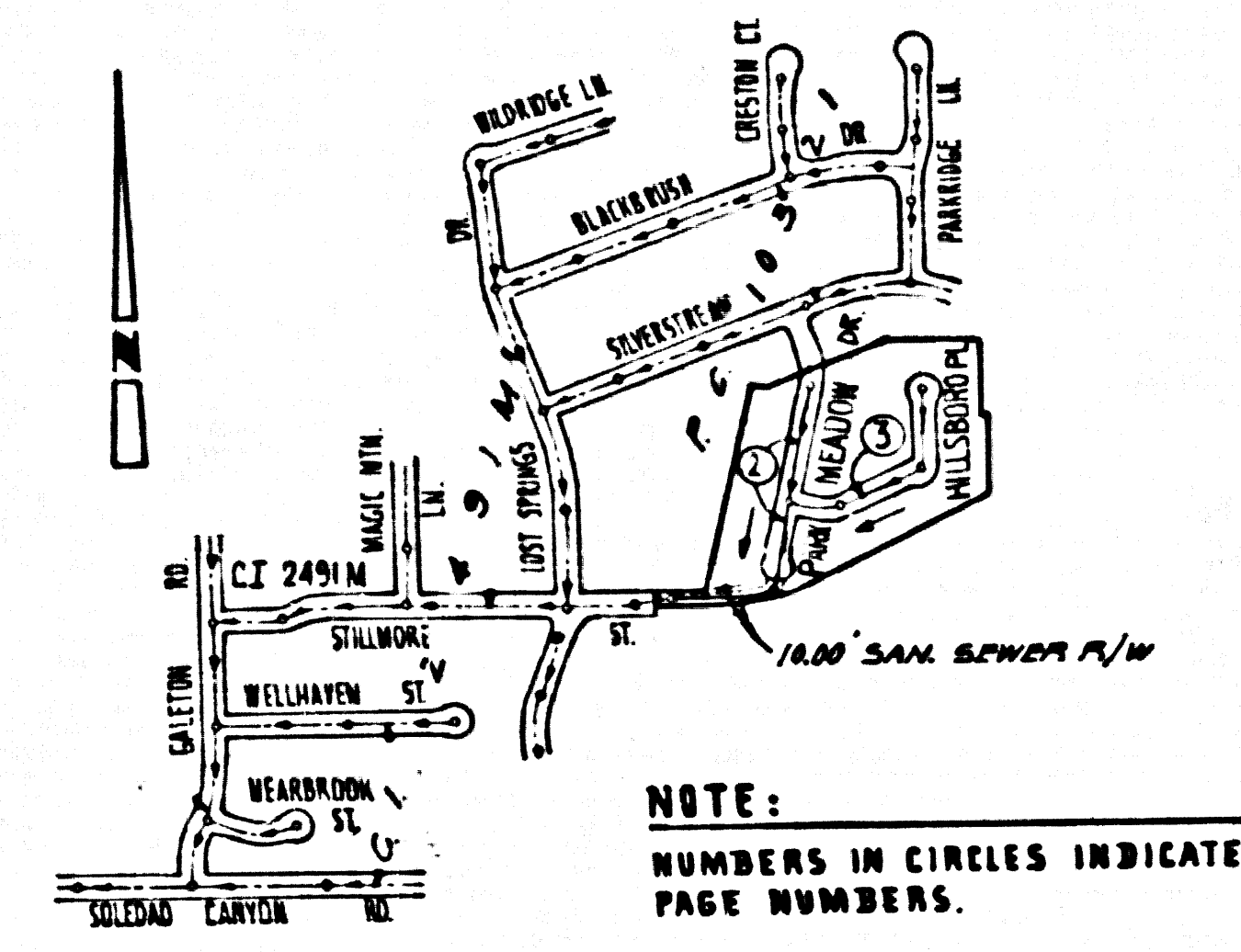
THE FOLLOWING LATEST REVISED STANDARD PLANS ON FILE IN THE OFFICE OF THE DEPARTMENT OF PUBLIC WORKS SHALL APPLY IN THE CONSTRUCTION OF THIS PROJECT

LEGEND	9-1
MINIMUM PUBLIC SAFETY REQUIREMENTS	9-2
BRICK MANHOLE	9-3
STANDARD MANHOLE STEP	9-4
RECORDS FOR SEWER PIPE	9-5
CANALING AND ENCASEMENT	9-6
WYE OR TEE SUPPORT	9-7
ALL COLUMNS THE HIGH WIDTHS	9-8
LOCKING MANHOLE FRAME AND COVER	9-9
NON-REINFORCED PRECAST CONCRETE MANHOLE	9-10
EROSION PROTECTION	9-11

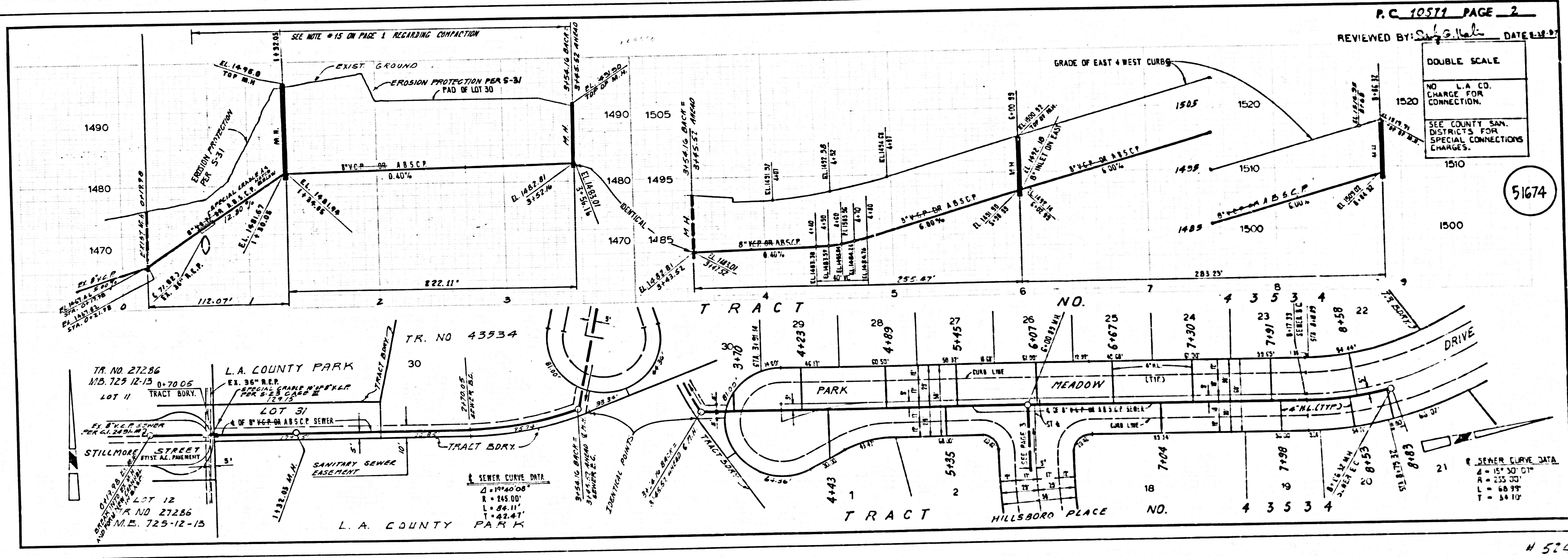
COUNTY OF LOS ANGELES, CALIFORNIA
THOMAS A. TIDEMANSON
DIRECTOR OF PUBLIC WORKS
APPROVED: *Carl J. Blum* 6/1/87
CHECKED: *Spencer* 5/28/87
REV. C.E. NO. 13542
SANTA CLARITA VALLEY BLDG. DIST. 2.2

CHARLES W. CARRY
CHIEF ENGINEER
APPROVED: *Charles W. Carry* 5/6/87

B.M. CL 4821 ELEV. 1449.523
L.S. ROAD TAG S. C.B. SOLEDAD
CANYON ROAD 5 FT. W/O B.C.F. N.S.W.
COR. GALETON ROAD 41 FT. S. 66' W/O E. INT.
NEW HALL QUAD. 19 23



INDEX MAP
TRACT 43534
P.C. 10571
SCALE: 1" = 600'



5

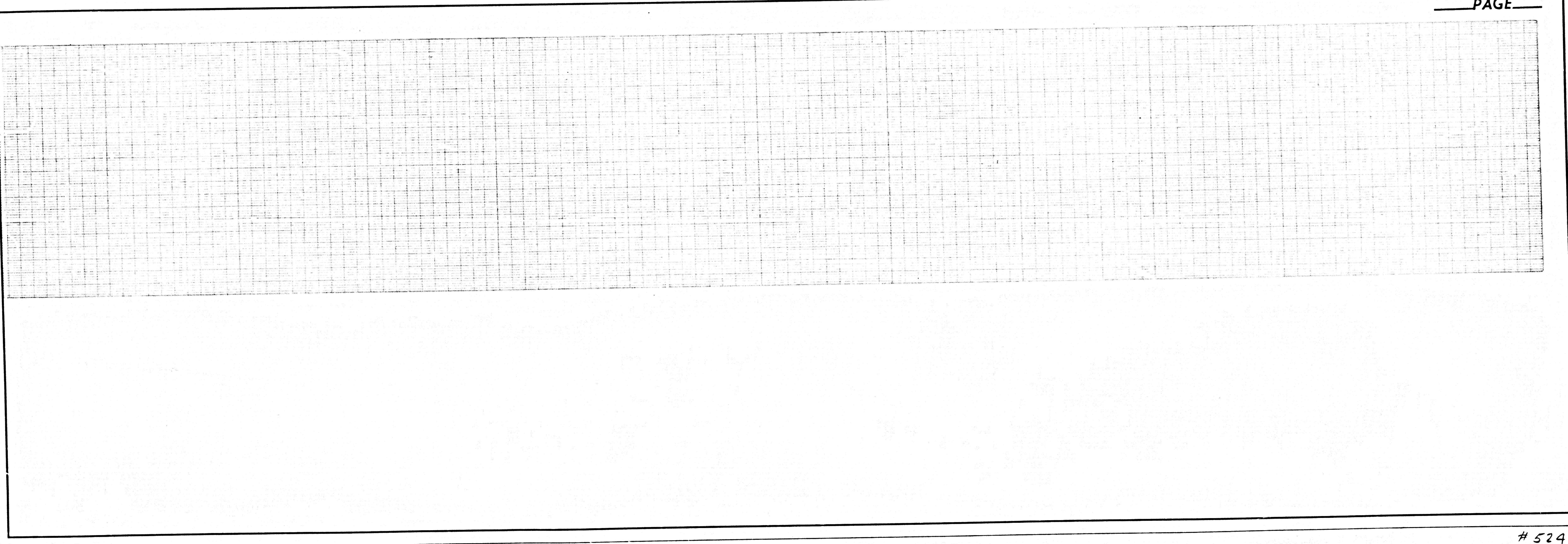
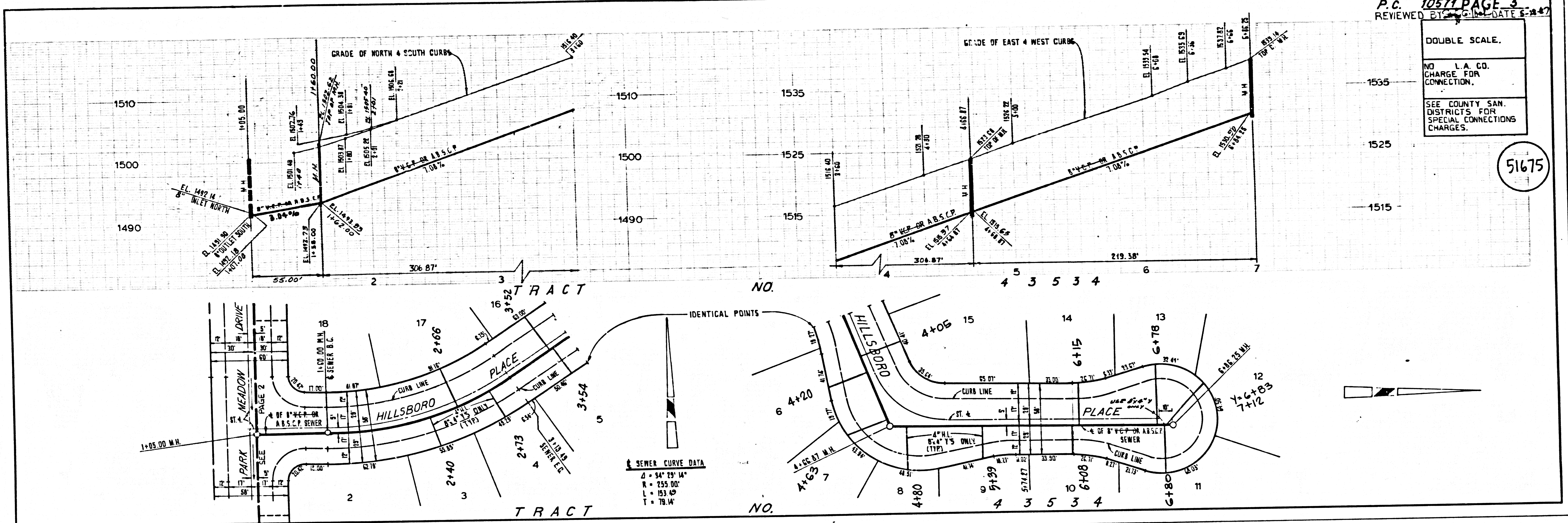
17201.29

42224 OM RT

P.C. 10571 PAGE 3
REVIEWED BY [Signature] DATE 8-18-47

DOUBLE SCALE.
NO L.A. CO.
CHARGE FOR
CONNECTION.
SEE COUNTY SAN.
DISTRICTS FOR
SPECIAL CONNECTIONS
CHARGES.

51675



PAGE

524