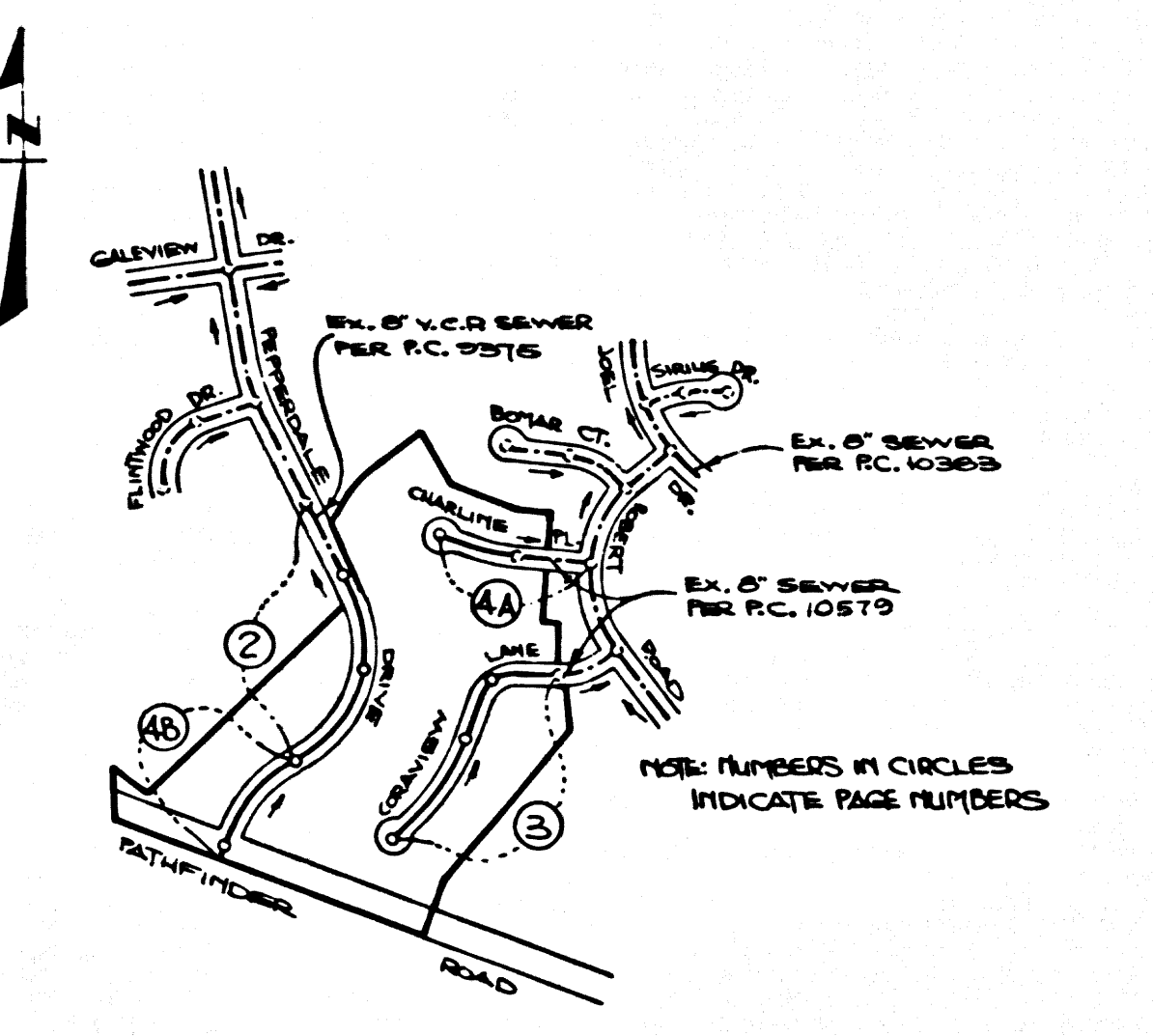


B.M. C.O. 1828 ELEV. 652.182  
 C.S. MONUMENT IN WALL 8" DOWN AT C/L  
 INT. OF PATRIOT ROAD AND BREA  
 CANTON CUT-OFF ROAD 171 FT. SOUTH  
 OF ESQUILLINE AVE. (USE NORTH EDGE)  
 OTHERS: QUAD 19 75



INDEX MAP  
 TRACT NO. 43710  
 P.C. 10578  
 SCALE 1" = 500'

**PRIVATE ENGINEER'S NOTICE TO CONTRACTORS**

The existence and location of any underground utility pipes or structures shown on these plans are obtained by a search of the available records. To the best of our knowledge there are no existing utilities except as shown on these plans. The contractor is required to take due precautionary measures to protect the utility lines shown and any other lines not of record or not shown on these plans. The contractor shall be responsible for notifying "UNDERGROUND SERVICE ALERT" at 1-800-422-4133 two working days prior to any excavation or construction.

Registered Engineer R.C.E. No. 19233

NO CONNECTION FOR THE DISPOSAL OF INDUSTRIAL WASTES SHALL BE MADE TO SEWERS SHOWN ON THESE DRAWINGS UNTIL A PERMIT FOR INDUSTRIAL WASTEWATER DISCHARGE HAS BEEN ISSUED BY THE SANITATION DISTRICTS FOR SAID CONNECTION.

BEFORE BREAKING INTO OR CONSTRUCTION ON A COUNTY SANITATION DISTRICT SEWER AND PRIOR TO FINAL ACCEPTANCE OF THE PROJECT, SANITATION DISTRICT INSPECTOR SHALL BE NOTIFIED BY PHONE (818) 962-8605 SO THAT REQUIRED INSPECTION CAN BE MADE.

**CONSTRUCTION NOTES CONT'D.**

16. FULL COMPLIANCE WITH PART IV OF THE SPECIAL PROVISIONS IS REQUIRED FOR THE INSTALLATION OF A.B.S. COMPOSITE PIPE.
17. MANHOLE WATER STOP BASKETS AND CLAMPS ARE REQUIRED FOR THE CONNECTION OF A.B.S. COMPOSITE PIPE TO MANHOLE STRUCTURES.
18. A.B.S. SOLID WALL PIPE MUST BE USED FOR VTE AND HOUSE LATERAL CONNECTIONS TO A.B.S. COMPOSITE MAINLINE SEWER PIPE.
19. A.B.S. COMPOSITE PIPE SHALL BE BEDDED IN CONFORMANCE WITH THE TABLE IN SECTION 9-3.1 OF PART IV OF THE SPECIAL PROVISIONS.
20. THREE DEGREE DEFLECTION COEFFICIENTS ARE REQUIRED FOR RADIUS OF CURVATURE LESS THAN 300 FEET WHEN USING 8" A.B.S. COMPOSITE PIPE.
21. NO CONNECTIONS FOR DISPOSAL OF INDUSTRIAL WASTE IS ALLOWED IF A.B.S. COMPOSITE PIPE IS USED.
22. SEWER LINE CURVATURE SHALL NOT BE ACHIEVED BY PULLING OF JOINTS OR REVELING PIPE EDGES WHEN USING PLASTIC PIPE INCLUDING A.B.S. COMPOSITE PIPE.
23. ALL VTE AND/OR HOUSE LATERALS ARE TO BE LOCATED AT LEAST FIVE FEET APART AND WHEN POSSIBLE NOT OLDER THAN FIVE FEET TO ANY MANHOLE.
24. A.B.S. SOLID WALL PIPE IS NOT ACCEPTABLE FOR USE AS MAINLINE SEWER.
25. ONLY VTE BRANCHES ARE TO BE USED FOR CONNECTION TO A.B.S. COMPOSITE MAINLINE SEWER PIPE.

NOTE: ISSUE H.L. PERMITS FOR LOTS 21 & 29 FROM P.C. 10577

NOTE: ISSUE NO HOUSE CONNECTION PERMITS UNTIL P.C. 10579 IS ACCEPTED BY COUNTY OF L.A.

**GENERAL NOTES:**

1. ELEVATIONS ARE IN FEET ABOVE U.S.C. & G.S. SEA LEVEL DATUM OF 1989.
2. NO REVISIONS SHALL BE MADE IN THESE PLANS WITHOUT THE APPROVAL OF THE DEPT. OF PUBLIC WORKS.
3. NO REPRESENTATIVE OF THE DEPT. OF PUBLIC WORKS WILL SURVEY OR LAY OUT ANY PORTION OF THE WORK.
4. GRADES TO WHICH THIS IMPROVEMENT IS TO BE CONSTRUCTED ARE SHOWN ON PLANS AND PROFILES GRADE POINTS FOR TOP OF CURBS, CENTER LINE OF STREETS, OR CENTER LINE OF ALLEYS ARE SHOWN BY CIRCLES ON PROFILES AT ALL POINTS BETWEEN DESIGNATED POINTS THE GRADE SHALL BE ESTABLISHED SO AS TO CONFORM TO A STRAIGHT LINE DRAWN BETWEEN SAID DESIGNATED POINTS.
5. THE PRIVATE ENGINEER SHALL FURNISH THE DEPT. OF PUBLIC WORKS WITH GRADE SHEETS & STATIONING FOR ALL HOUSE LATERALS AND 10" OR 12" BRANCHES AND SHALL PROVIDE STAKES FOR THEM AT THEIR PROPER LOCATIONS WITH STATIONING PLAINLY MARKED. ALL HOUSE LATERALS SHALL BE CONSTRUCTED IN A STRAIGHT ALIGNMENT AT RIGHT ANGLES FROM THE MAIN LINE SEWER EXCEPT AS SHOWN ON THE PLANS. HOUSE LATERALS FROM CHIMNEYS SHALL NOT HAVE AN ANGLE OF LESS THAN 45° WITH THE MAIN LINE SEWER. ANY CHANGE IN ALIGNMENT SHALL BE REQUESTED IN WRITING BY THE PRIVATE ENGINEER.
6. THE PRIVATE ENGINEER SHALL FURNISH THE HOUSE LATERAL DEPTH AT THE PROPERTY LINE BELOW THE TOP OF CURB ELEVATION FOR EACH HOUSE LATERAL ON THE GRADE SHEET.
7. BEFORE WORK CAN BE STARTED, THE CONTRACTOR MUST OBTAIN A PERMIT TO EXCAVATE IN COUNTY STREETS FROM THE ROAD ELEMENT OF THE L.A. DEPT. OF PUBLIC WORKS, DIST. OFFICE, NO. 1, AND BY A FEE TO THE DIRECTOR OF PUBLIC WORKS, 2280 ALCAZAR ST., L.A., CA 90033, TO COVER THE COST OF CONSTRUCTION INSPECTION & RECORD PLANS.
8. IF WORK IS TO BE DONE IN A STATE HIGHWAY, A PERMIT MUST BE OBTAINED FROM THE STATE OF CALIFORNIA, DIVISION OF HIGHWAYS, 120 SOUTH SPRING STREET, LOS ANGELES, CALIFORNIA.
9. APPROVAL OF THE PLAN BY THE COUNTY OF LOS ANGELES DOES NOT CONSTITUTE A REPRESENTATION AS TO THE ACCURACY OF THE LOCATION OF OR THE EXISTENCE OR NON-EXISTENCE OF ANY UNDERGROUND UTILITY PIPE, OR STRUCTURE WITHIN THE LIMITS OF THIS PROJECT. THIS NOTE APPLIES TO ALL PAGES.
10. REFER TO SECTION 7.10.1 OF THE STANDARD SPECIFICATIONS, REGARDING SAFETY ORDERS.
11. PRIOR TO THE ISSUANCE OF THE REQUIRED SEWER CONSTRUCTION PERMIT, THE CONTRACTOR SHALL OBTAIN AND FILE WITH THE DEPT. OF PUBLIC WORKS COPIES OF A PERMIT TO EXCAVATE IN COUNTY STREETS FROM THE L.A. COUNTY ROAD ELEMENT BY THE DEPT. OF PUBLIC WORKS A PERMIT FOR EXCAVATIONS & TRENCHES FROM THE STATE OF CALIF., DIV. OF INDUSTRIAL SAFETY & A CERTIFICATE OF WORKERS COMPENSATION INSURANCE WITH THE DEPARTMENT OF PUBLIC WORKS, 2280 ALCAZAR ST., RM. 4003, LOS ANGELES, CALIFORNIA 90033 NAMED AS THE CERTIFICATE HOLDER TO BE NOTIFIED 30 DAYS PRIOR TO CANCELLATION OF POLICY.

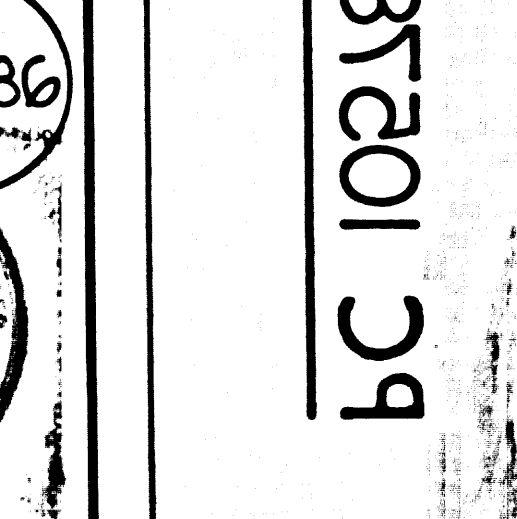
**CONSTRUCTION NOTES:**

1. WORK SHALL BE CONSTRUCTED ACCORDING TO THE STANDARD SPECIFICATIONS FOR PUBLIC WORKS CONSTRUCTION 1985 EDITION, UNLESS OTHERWISE SPECIFIED IN THE SPECIAL PROVISIONS FOR THE CONSTRUCTION OF SANITARY SEWERS DATED SEPTEMBER 21, 1978, AND SHALL BE PROSECUTED ONLY IN THE PRESENCE OF THE DIRECTOR OF PUBLIC WORKS.
2. THE CONTRACTOR SHALL NOTIFY THE CONSTRUCTION DIV., PUBLIC WORKS DEPT., TEL. (213) 226-1281 AT LEAST 24 HOURS BEFORE STARTING ANY WORK UNDER THIS CONTRACT.
3. HOUSE LATERALS TO BE CONSTRUCTED WITH INVERTS AT PROPERTY LINE 4 FEET BELOW CURB GRADE EXCEPT AS NOTED.
4. VTE OR VTE BRANCHES MAY BE USED FOR CONNECTIONS TO MAINLINE SEWER AS NOTED.
5. ALL VTE BRANCHES ONLY MAY BE USED FOR CONNECTIONS TO MAINLINE SEWER IF A.B.S. C.P. IS USED.
6. ALL STRUCTURES SHALL BE PER 2-3 PER STANDARD SPECIFICATIONS FOR PUBLIC WORKS.
7. PROVIDE STAKES ON THE PROPERTY LINE OR PROPERTY LINES PRODUCED AT RIGHT ANGLES TO THE SEWER LINE AT THE CENTER LINE OF EACH MANHOLE.
8. MANHOLE TOPS IN UNIMPROVED RIGHTS OF WAY TO BE SIX INCHES ABOVE FINISHED GRADE.
9. VITRIFIED CLAY PIPE JOINTS SHALL BE TYPE "D" OR "D" PER STANDARD SPECIFICATIONS SECTION 200-2.
10. IF A POWER POLE IS WITHIN THREE FEET OF THE SEWER, THE SEWER SHALL BE ENCASED, PER 2-3 CASE K, TWO FEET ON EACH SIDE FROM THE POINT OF INTERFERENCE.
11. IF DURING THE COURSE OF CONSTRUCTION IT IS DETERMINED THAT THERE IS LESS THAN FOUR FEET OF COVER OVER THE TOP OF A MAIN LINE OR HOUSE LATERAL SEWER WHICH IS NOT INDICATED ON THE PLANS, THE PIPE SHALL BE ENCASED PER 2-3 CASE H UNLESS OTHERWISE APPROVED BY THE DIRECTOR OF PUBLIC WORKS.
12. ALL JOINTS BETWEEN CAST IRON PIPE AND VITRIFIED CLAY PIPE SHALL BE MADE WITH A RUBBER SLEEVE JOINT, TYPE "C" OR "D" (WITH BUSHING IF NECESSARY) PER STANDARD SPECIFICATIONS SECTION 200-2.
13. ALL JOINTS BETWEEN CAST IRON PIPE AND VITRIFIED CLAY PIPE SHALL BE MADE WITH APPROVED FILLING PER STANDARD SPECIFICATIONS SECTION 200-2.
14. REINFORCE ALL TRENCHES WITHIN RIGHTS OF WAY TO MEET L.A. COUNTY PUBLIC WORKS OR CALIF. STATE HIGHWAY REQUIREMENTS IN ACCORDANCE WITH PERMITS.
15. FULL COMPLIANCE WITH SECTION 200-3.4 OF THE STANDARD SPECIFICATIONS WILL BE REQUIRED FOR BACKFILL IN STREETS. CERTIFICATION OF BACKFILL COMPLETION AND SAND EQUIVALENTS BY A QUALIFIED TESTING LABORATORY SHALL BE PROVIDED BY THE PERMITTEE PRIOR TO THE ISSUANCE OF A CERTIFICATE OF PARTIAL ACCEPTANCE.
16. SPECIAL BACKFILL IN BASEMENT CONSTRUCTION: (A) BACKFILL TRENCH AND REPLACE OTHER EARTH SO AS TO ACHIEVE THE NATURAL OR FINISHED GRADES AND SLOPES SHOWN ON THE DRAWINGS PLAN APPROVED FOR THIS DEVELOPMENT BY THE BUILDING AND SAFETY DIVISION; (B) ALL BACKFILL AND EARTH REPLACED SHALL BE COMPACTED TO A MINIMUM OF 80% OF MAXIMUM DENSITY PER ASTM D1557 METHOD OF TEST UNLESS AS NOTED; ACCEPTABLE CERTIFICATION OF SUCH COMPACTION SHALL BE SUBMITTED TO THE CONSTRUCTION DIV., PUBLIC WORKS DEPT.

**DOUBLE SCALE**

PROFILE, ALIGNMENT AND GRADE OF  
**SANITARY SEWERS**  
 TO BE CONSTRUCTED IN  
**TRACT NO. 43710**  
 PRIVATE CONTRACT NO. 10578

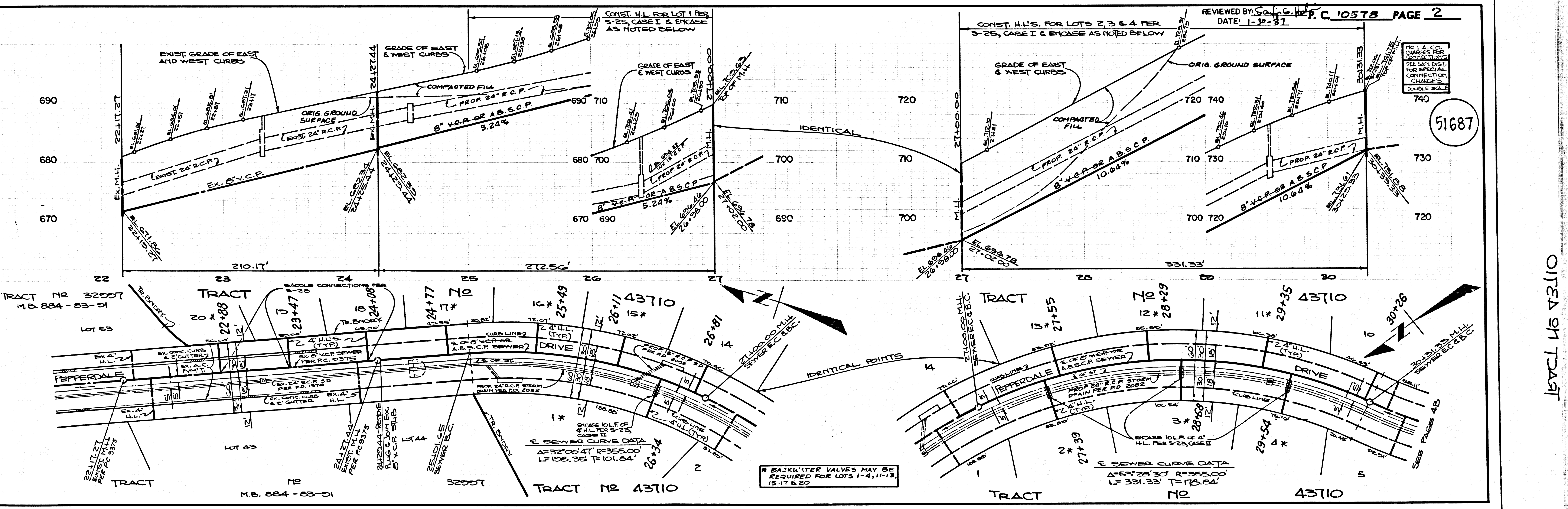
U138,D-4  
 2 SHEETS, 4 PAGES  
 SCALE: VERT. 1" = 4'  
 HORIZ. 1" = 40'  
 APRIL, 1986  
 PREPARED IN THE OFFICES OF  
 LIND & MILLERUD, INC.  
 3085 MARLBOROUGH DRIVE  
 SAN ANTONIO, CA 95108  
 BY: JOHN R. BARRACLOUGH  
 REG. C.E. 19233



THE FOLLOWING LATEST REVISED STANDARD PLANS ON FILE IN THE OFFICE OF THE DEPARTMENT OF PUBLIC WORKS SHALL APPLY IN THE CONSTRUCTION OF THIS PROJECT:

|               |         |
|---------------|---------|
| SEWER         | 200-0   |
| SEWER MANHOLE | 200-1   |
| SEWER MANHOLE | 200-2   |
| SEWER MANHOLE | 200-3   |
| SEWER MANHOLE | 200-4   |
| SEWER MANHOLE | 200-5   |
| SEWER MANHOLE | 200-6   |
| SEWER MANHOLE | 200-7   |
| SEWER MANHOLE | 200-8   |
| SEWER MANHOLE | 200-9   |
| SEWER MANHOLE | 200-10  |
| SEWER MANHOLE | 200-11  |
| SEWER MANHOLE | 200-12  |
| SEWER MANHOLE | 200-13  |
| SEWER MANHOLE | 200-14  |
| SEWER MANHOLE | 200-15  |
| SEWER MANHOLE | 200-16  |
| SEWER MANHOLE | 200-17  |
| SEWER MANHOLE | 200-18  |
| SEWER MANHOLE | 200-19  |
| SEWER MANHOLE | 200-20  |
| SEWER MANHOLE | 200-21  |
| SEWER MANHOLE | 200-22  |
| SEWER MANHOLE | 200-23  |
| SEWER MANHOLE | 200-24  |
| SEWER MANHOLE | 200-25  |
| SEWER MANHOLE | 200-26  |
| SEWER MANHOLE | 200-27  |
| SEWER MANHOLE | 200-28  |
| SEWER MANHOLE | 200-29  |
| SEWER MANHOLE | 200-30  |
| SEWER MANHOLE | 200-31  |
| SEWER MANHOLE | 200-32  |
| SEWER MANHOLE | 200-33  |
| SEWER MANHOLE | 200-34  |
| SEWER MANHOLE | 200-35  |
| SEWER MANHOLE | 200-36  |
| SEWER MANHOLE | 200-37  |
| SEWER MANHOLE | 200-38  |
| SEWER MANHOLE | 200-39  |
| SEWER MANHOLE | 200-40  |
| SEWER MANHOLE | 200-41  |
| SEWER MANHOLE | 200-42  |
| SEWER MANHOLE | 200-43  |
| SEWER MANHOLE | 200-44  |
| SEWER MANHOLE | 200-45  |
| SEWER MANHOLE | 200-46  |
| SEWER MANHOLE | 200-47  |
| SEWER MANHOLE | 200-48  |
| SEWER MANHOLE | 200-49  |
| SEWER MANHOLE | 200-50  |
| SEWER MANHOLE | 200-51  |
| SEWER MANHOLE | 200-52  |
| SEWER MANHOLE | 200-53  |
| SEWER MANHOLE | 200-54  |
| SEWER MANHOLE | 200-55  |
| SEWER MANHOLE | 200-56  |
| SEWER MANHOLE | 200-57  |
| SEWER MANHOLE | 200-58  |
| SEWER MANHOLE | 200-59  |
| SEWER MANHOLE | 200-60  |
| SEWER MANHOLE | 200-61  |
| SEWER MANHOLE | 200-62  |
| SEWER MANHOLE | 200-63  |
| SEWER MANHOLE | 200-64  |
| SEWER MANHOLE | 200-65  |
| SEWER MANHOLE | 200-66  |
| SEWER MANHOLE | 200-67  |
| SEWER MANHOLE | 200-68  |
| SEWER MANHOLE | 200-69  |
| SEWER MANHOLE | 200-70  |
| SEWER MANHOLE | 200-71  |
| SEWER MANHOLE | 200-72  |
| SEWER MANHOLE | 200-73  |
| SEWER MANHOLE | 200-74  |
| SEWER MANHOLE | 200-75  |
| SEWER MANHOLE | 200-76  |
| SEWER MANHOLE | 200-77  |
| SEWER MANHOLE | 200-78  |
| SEWER MANHOLE | 200-79  |
| SEWER MANHOLE | 200-80  |
| SEWER MANHOLE | 200-81  |
| SEWER MANHOLE | 200-82  |
| SEWER MANHOLE | 200-83  |
| SEWER MANHOLE | 200-84  |
| SEWER MANHOLE | 200-85  |
| SEWER MANHOLE | 200-86  |
| SEWER MANHOLE | 200-87  |
| SEWER MANHOLE | 200-88  |
| SEWER MANHOLE | 200-89  |
| SEWER MANHOLE | 200-90  |
| SEWER MANHOLE | 200-91  |
| SEWER MANHOLE | 200-92  |
| SEWER MANHOLE | 200-93  |
| SEWER MANHOLE | 200-94  |
| SEWER MANHOLE | 200-95  |
| SEWER MANHOLE | 200-96  |
| SEWER MANHOLE | 200-97  |
| SEWER MANHOLE | 200-98  |
| SEWER MANHOLE | 200-99  |
| SEWER MANHOLE | 200-100 |

COUNTY OF LOS ANGELES, CALIFORNIA  
 THOMAS A. TIDENHARDSON, DIRECTOR  
 DEPARTMENT OF PUBLIC WORKS  
 APPROVED: [Signature] 2/15/87 DATE: 2/15/87  
 CHARLES W. CARRY, CHIEF ENGINEER  
 CO. SAN. DIST. NO. 11  
 APPROVED: [Signature] 2/19/87 DATE: 2/19/87  
 OFFICE ENGINEER  
 REG. C.E. NO. 16841  
 L.A. PUENTE BLDG. DIST. 2



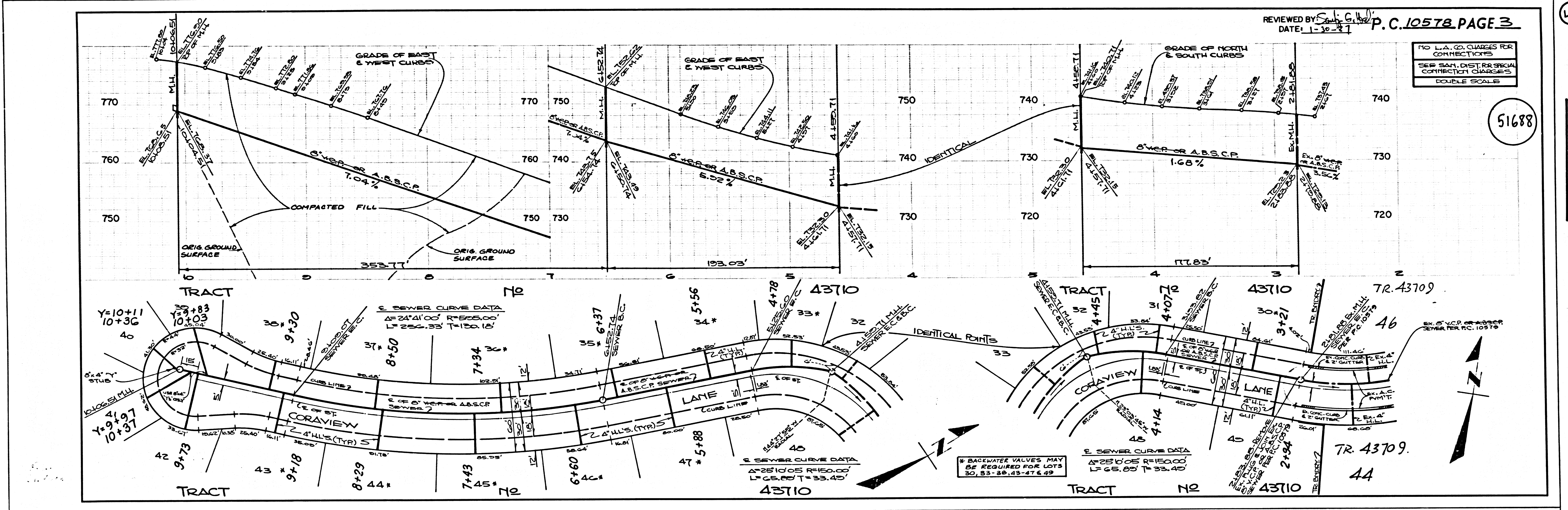
1

87201 29

REVIEWED BY: [Signature] P.C. 10578 PAGE 2  
 DATE: 1-30-87

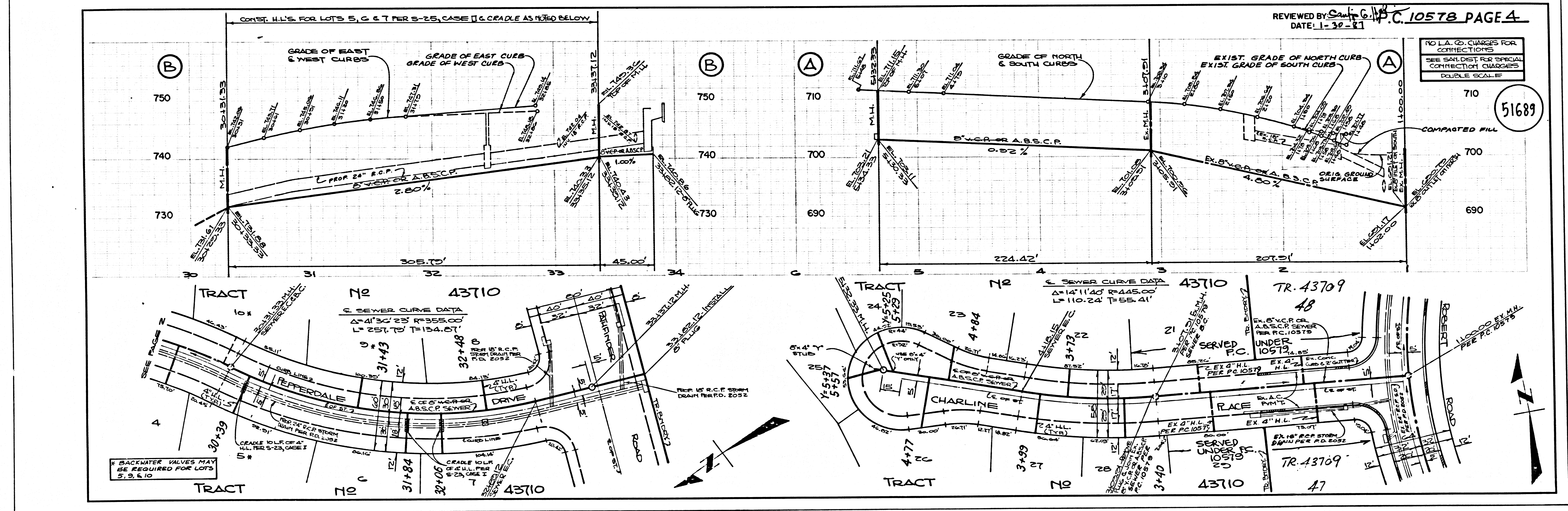
51687

01324 917 73A7



(S)

872013



(S)

0154 54 T310

L.A. COUNTY SEWER SHEET NO. 2