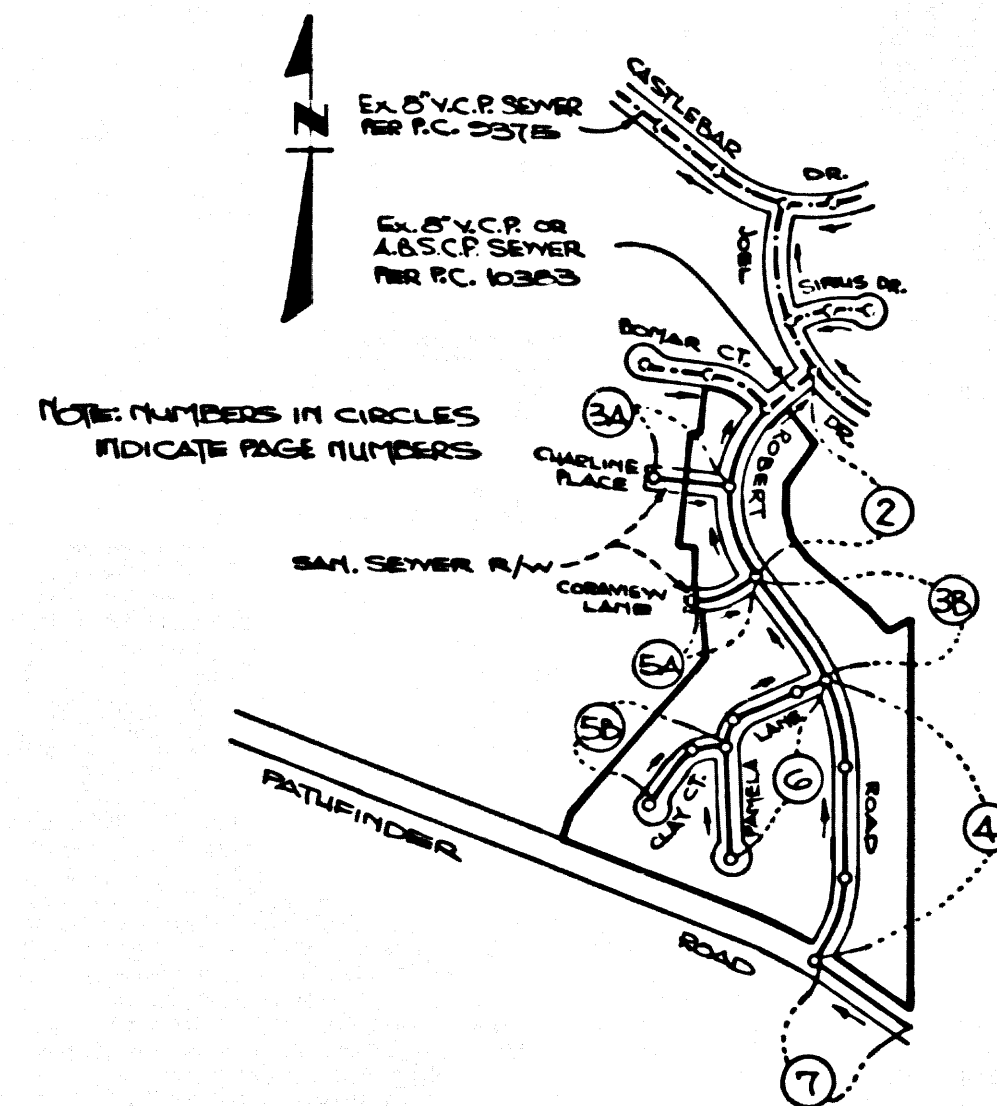


B.M. C.S. 1829 ELEV. 652.182
 C.S. MONUMENT IN WALL 8" DOWN AT C/L
 INT. OF PATHEIMER ROAD AND BECA
 CANYON CUT-OFF ROAD 171 FT. SOUTH
 OF ESQUILLINE AVE. (USE NORTH EDGE)
 OTTERBEIN QUAD 19 75



PRIVATE ENGINEER'S NOTICE TO CONTRACTORS

The existence and location of any underground utility pipes or structures shown on these plans are obtained by a search of the available records. To the best of our knowledge there are no existing utilities except as shown on these plans. The contractor is required to take due precautionary measures to protect the utility lines shown and any other lines not of record or not shown on these plans. The contractor shall be responsible for notifying "UNDERGROUND SERVICE ALERT" at 1-800-422-4133 two working days prior to any excavation or construction.

Registered Engineer R.C.E. No. 19233

NO CONNECTION FOR THE DISPOSAL OF INDUSTRIAL WASTES SHALL BE MADE TO SEWERS SHOWN ON THESE DRAWINGS UNTIL A PERMIT FOR INDUSTRIAL WASTEWATER DISCHARGE HAS BEEN ISSUED BY THE SANITATION DISTRICTS FOR SAID CONNECTION.

BEFORE BREAKING INTO OR CONSTRUCTION ON A COUNTY SANITATION DISTRICT SEWER AND PRIOR TO FINAL ACCEPTANCE OF THE PROJECT, SANITATION DISTRICT INSPECTOR SHALL BE NOTIFIED BY PHONE (818) 962-8605 SO THAT REQUIRED INSPECTION CAN BE MADE.

CONSTRUCTION NOTES CONT'D.

16. FULL COMPLIANCE WITH PART IV OF THE SPECIAL SPECIFICATIONS IS REQUIRED FOR THE INSTALLATION OF A-B-S. COMPOSITE PIPE.
17. MANHOLE WATER STOP GASKETS AND CLAMPS ARE REQUIRED FOR THE CONNECTION OF A-B-S. COMPOSITE PIPE TO MANHOLE SEWER PIPE.
18. A-B-S. SOLID WALL PIPE MUST BE USED FOR VTE AND HOUSE LATERAL CONNECTIONS TO A-B-S. COMPOSITE MAINLINE SEWER PIPE.
19. A-B-S. COMPOSITE PIPE SHALL BE BEDDED IN CONFORMANCE WITH THE TABLE IN SECTION B-3.1 OF PART IV OF THE SPECIAL SPECIFICATIONS.
20. THREE DEGREE DEFLECTION COUPLERS ARE REQUIRED FOR RADIUS OF CURVATURE LESS THAN 300 FEET WHEN USING 8" A-B-S. COMPOSITE PIPE.
21. NO CONNECTIONS FOR DISPOSAL OF INDUSTRIAL WASTE IS ALLOWED IF A-B-S. COMPOSITE PIPE IS USED.
22. SEWER LINE CURVATURE SHALL NOT BE ACHIEVED BY PULLING OF JOISTS OR BEVELING PIPE ENDS WHEN USING PLASTIC PIPE INCLUDING A-B-S. COMPOSITE PIPE.
23. ALL VTE AND HOUSE LATERALS ARE TO BE LOCATED AT LEAST FIVE FEET APART AND WHEN POSSIBLE NOT CLOSER THAN FIVE FEET TO ANY MANHOLE.
24. A-B-S. SOLID WALL PIPE IS NOT ACCEPTABLE FOR USE AS MAINLINE SEWER.
25. ONLY VTE BRANCHES ARE TO BE USED FOR CONNECTION TO A-B-S. COMPOSITE MAINLINE SEWER PIPE.

ISSUE NO HOUSE CONNECTION PERMITS UNTIL P.C. 10383 IS ACCEPTED BY L.A. COUNTY

GENERAL NOTES:

1. ELEVATIONS ARE IN FEET ABOVE U.S.C. & G.S. SEA LEVEL DATUM OF 1988.
2. NO REVISIONS SHALL BE MADE IN THESE PLANS WITHOUT THE APPROVAL OF THE DEPT. OF PUBLIC WORKS.
3. NO REPRESENTATIVE OF THE DEPT. OF PUBLIC WORKS WILL SURVEY OR LAY OUT ANY PORTION OF THE WORK.
4. GRADES TO WHICH THIS IMPROVEMENT IS TO BE CONSTRUCTED ARE SHOWN ON PLANS AND PROFILES GRADE POINTS FOR TOP OF CURBS, CENTER LINE OF STREETS, OR CENTER LINE OF ALLEYS ARE SHOWN BY CIRCLES ON PROFILES. AT ALL POINTS BETWEEN DESIGNATED POINTS THE GRADE SHALL BE ESTABLISHED SO AS TO CONFORM TO A STRAIGHT LINE DRAWN BETWEEN SAID DESIGNATED POINTS.
5. THE PRIVATE ENGINEER SHALL FURNISH THE DEPT. OF PUBLIC WORKS WITH GRADE SHEETS & STATIONING FOR ALL HOUSE LATERALS AND "T" BRANCHES AND SHALL PROVIDE STAKES FOR THEM AT THEIR PROPER LOCATIONS WITH STATIONING PLAINLY MARKED. ALL HOUSE LATERALS SHALL BE CONSTRUCTED IN A STRAIGHT ALIGNMENT AT RIGHT ANGLES FROM THE MAIN LINE SEWER EXCEPT AS SHOWN ON THE PLANS. HOUSE LATERALS FROM CHIMNEYS SHALL NOT HAVE AN ANGLE OF LESS THAN 45° WITH THE MAIN LINE SEWER. ANY CHANGE IN ALIGNMENT SHALL BE REQUESTED IN WRITING BY THE PRIVATE ENGINEER.
6. THE PRIVATE ENGINEER SHALL FURNISH THE HOUSE LATERAL DEPTH AT THE PROPERTY LINE BELOW THE TOP OF CURB ELEVATION FOR EACH HOUSE LATERAL ON THE GRADE SHEET.
7. BEFORE WORK CAN BE STARTED, THE CONTRACTOR MUST OBTAIN A PERMIT TO EXCAVATE IN COUNTY STREETS FROM THE ROAD ELEMENT OF THE L.A. DEPT. OF PUBLIC WORKS, DIST. OFFICE NO. 1, AND PAY A FEE TO THE DIR. OF PUBLIC WORKS, 2250 ALCAZAR ST., L.A., CA 90033, TO COVER THE COST OF CONSTRUCTION INSPECTION AND RECORD PLANS.
8. IF WORK IS TO BE DONE IN A STATE HIGHWAY, A PERMIT MUST BE OBTAINED FROM THE STATE OF CALIFORNIA, DIVISION OF HIGHWAYS, 100 SOUTH SPRING STREET, LOS ANGELES, CALIFORNIA.
9. APPROVAL OF THIS PLAN BY THE COUNTY OF LOS ANGELES DOES NOT CONSTITUTE A REPRESENTATION AS TO THE ACCURACY OF THE LOCATION OF OR THE EXISTENCE OR NON-EXISTENCE OF ANY UNDERGROUND UTILITY PIPE, OR STRUCTURE WITHIN THE LIMITS OF THE PROJECT. THIS NOTE APPLIES TO ALL PAGES.
10. REFER TO SECTION 7.10.1 OF THE STANDARD SPECIFICATIONS, REGARDING SAFETY ORDERS.
11. PRIOR TO THE ISSUANCE OF THE REQUIRED SEWER CONSTRUCTION PERMIT, THE CONTRACTOR SHALL OBTAIN AND FILE WITH THE DEPT. OF PUBLIC WORKS COPIES OF A PERMIT TO EXCAVATE COUNTY STREETS FROM THE L.A. COUNTY ROAD ELEMENT AT THE DEPT. OF PUBLIC WORKS A PERMIT FOR EXCAVATIONS & TRENCHES FROM THE STATE OF CALIF., DIV. OF INDUSTRIAL SAFETY & A CERTIFICATE OF WORKER'S COMPENSATION INSURANCE WITH THE DEPARTMENT OF PUBLIC WORKS, 2250 ALCAZAR ST., RM. 4203, LOS ANGELES, CALIF. 90033, NAMED AS THE CERTIFICATE HOLDER TO BE NOTIFIED 30 DAYS PRIOR TO CANCELLATION OF POLICY.

CONSTRUCTION NOTES:

1. WORK SHALL BE CONSTRUCTED ACCORDING TO THE STANDARD SPECIFICATIONS FOR PUBLIC WORKS CONSTRUCTION (1985 EDITION) WITH SUPPLEMENTS BY DEPT. OF PUBLIC WORKS SPECIAL PROVISIONS FOR THE CONSTRUCTION OF SANITARY SEWERS DATED SEPT. 21, 1976, AND SHALL BE PROSECUTED ONLY IN THE PRESENCE OF THE DIR. OF PUBLIC WORKS.
2. THE CONTRACTOR SHALL NOTIFY THE CONSTRUCTION DIV. OF PUBLIC WORKS DEPT. TEL. (213) 226-9200 AT LEAST 24 HOURS BEFORE STARTING ANY WORK UNDER THIS CONTRACT.
3. HOUSE LATERALS TO BE CONSTRUCTED WITH INVERTS AT PROPERTY LINE 8 FEET BELOW CURB GRADE EXCEPT AS NOTED.
4. VTE OR TEE BRANCHES MAY BE USED FOR CONNECTIONS TO MAINLINE SEWERS EXCEPT AS NOTED.
5. TEE BRANCHES ONLY MAY BE USED FOR CONNECTIONS TO MAINLINE SEWERS. ALL S.C.P. JOINTS SHALL BE MADE WITH APPROVED FITTINGS.
6. ALL SPECIALITIES SHALL BE MADE WITH APPROVED FITTINGS PER S.C.P. 12.204.
7. PROVIDE STAKES ON THE PROPERTY LINE OR PROPERTY LINES PRODUCED AT RIGHT ANGLES TO THE SEWER LINE AT THE CENTER LINE OF EACH MANHOLE.
8. MANHOLE TOPS IN UNIMPROVED RIGHTS OF WAY TO BE SIX INCHES ABOVE FINISHED GRADE.
9. VITRIFIED CLAY PIPE JOINTS SHALL BE TYPE "O" OR "H" PER STANDARD SPECIFICATIONS SECTION 308.2.
10. IF A POWER POLE IS WITHIN THREE FEET OF THE SEWER, THE SEWER SHALL BE ENCASED PER 3.22 CASE A TWO FEET ON EACH SIDE FROM THE POINT OF INTERFERENCE WITH THE SEWER.
11. IF DURING THE COURSE OF CONSTRUCTION IT IS DETERMINED THAT THERE IS LESS THAN FOUR FEET OF COVER OVER THE TOP OF A MAIN LINE OR HOUSE LATERAL SEWER WHICH IS NOT INDICATED ON THE PLANS, THE PIPE SHALL BE ENCASED PER 3.22 CASE B UNLESS OTHERWISE APPROVED BY THE DIRECTOR OF PUBLIC WORKS.
12. ALL JOINTS BETWEEN CAST IRON PIPE AND VITRIFIED CLAY PIPE SHALL BE MADE WITH A RUBBER SLEEVE JOINT, TYPE "C" OR "D" (WITH RUBBER) IF NECESSARY PER STANDARD SPECIFICATIONS SECTION 308.2.
13. ALL JOINTS BETWEEN CAST IRON PIPE AND A-B-S.C.P. SHALL BE MADE WITH APPROVED FITTINGS.
14. SEWERS TO BE TESTED FOR LEAKAGE PER SECTION 308.7 OF THE STANDARD SPECIFICATIONS AND SPECIAL PROVISIONS.
15. REPAIRS TO ALL TRENCHES WITHIN PAVED AREAS TO MEET L.A. COUNTY PUBLIC WORKS OR CALIF. STATE HIGHWAY REQUIREMENTS IN ACCORDANCE WITH PERMITS.
16. FULL COMPLIANCE WITH SECTION 308.13.4 OF THE STANDARD SPEC. WILL BE REQUIRED FOR BACKFILL IN STREETS. CERTIFICATION OF BACKFILL COMPACTION AND SAND EQUIVALENTS BY A QUALIFIED, REGISTERED TESTING LABORATORY SHALL BE PROVIDED BY THE PERMITTEE PRIOR TO THE ISSUANCE OF A CERTIFICATE OF PARTIAL ACCEPTANCE.
17. SPECIAL BACKFILL IN EASEMENT CONSTRUCTION: (A) BACKFILL TRENCH AND REPLACE OTHER EARTH SO AS TO ACHIEVE THE NATURAL OR FINISHED GRADES AND SLOPES SHOWN ON THE GRADING PLAN AS APPROVED FOR THE DEVELOPMENT BY THE BUILDING AND SAFETY DIVISION. (B) ALL BACKFILL AND EARTH REPLACED SHALL BE COMPACTED TO A MINIMUM OF 80% OF MAXIMUM DENSITY PER A.S.T.M. STD. METHOD OF TEST D955 BY MEANS OF ACCEPTABLE CERTIFICATION OF SUCH COMPACTION SHALL BE SUBMITTED TO THE CONSTRUCTION DIV. OF PUBLIC WORKS DEPT.

DOUBLE SCALE

PROFILE, ALIGNMENT AND GRADE OF PAGE 1

SANITARY SEWERS

TO BE CONSTRUCTED IN

TRACT NO. 43709

PRIVATE CONTRACT NO. 10579

U-138, E-4
 W.S.

4 SHEETS, 7 PAGES

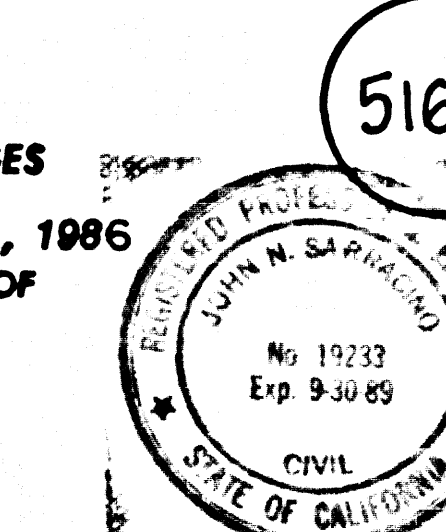
SCALE: VERT. 1"=8' APRIL, 1986

HORIZ. 1"=40' PREPARED IN THE OFFICES OF

LIND & HILLERUD, INC.

2043 HUNTINGTON DRIVE
 SAN MARINO, CA 91766

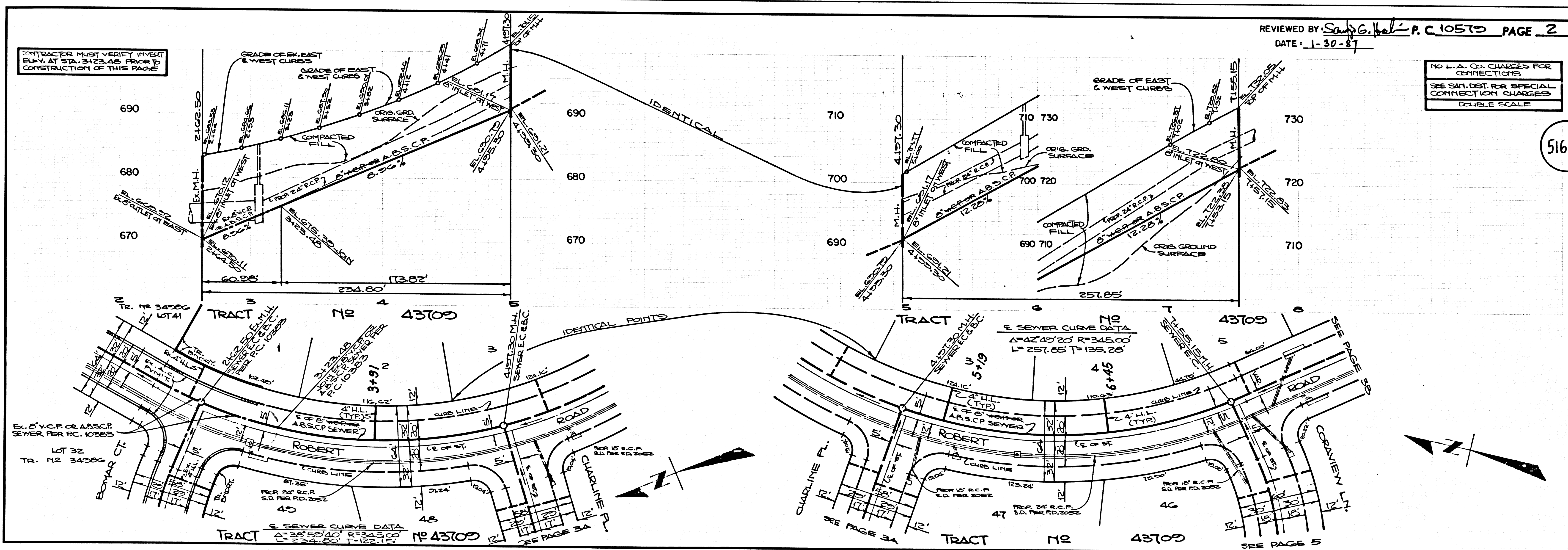
BY: J. H. HARRINGTON REG. C.E. 19233



THE FOLLOWING LATEST 1978 STANDARD PLANS ON FILE IN THE OFFICE OF THE DEPARTMENT OF PUBLIC WORKS, COUNTY OF LOS ANGELES, APPLY TO THE CONSTRUCTION OF THIS PROJECT:

ISSUES	48
MINIMUM PUBLIC SAFETY REQUIREMENTS	203-0
BRACE SEWER MANHOLE	203-0
STANDARD MANHOLE SET	207
REPAIRS FOR SEWER PIPE	208
CHANGING AND ENCASING	208
WTE ON THE SURFACE	208
ALLOWABLE TRENCH WIDTHS	208
LOADING MANHOLE FRAMES AND COVERS	208
NON-IMPONDED PRECAST CONCRETE SEWER MANHOLE	200-0

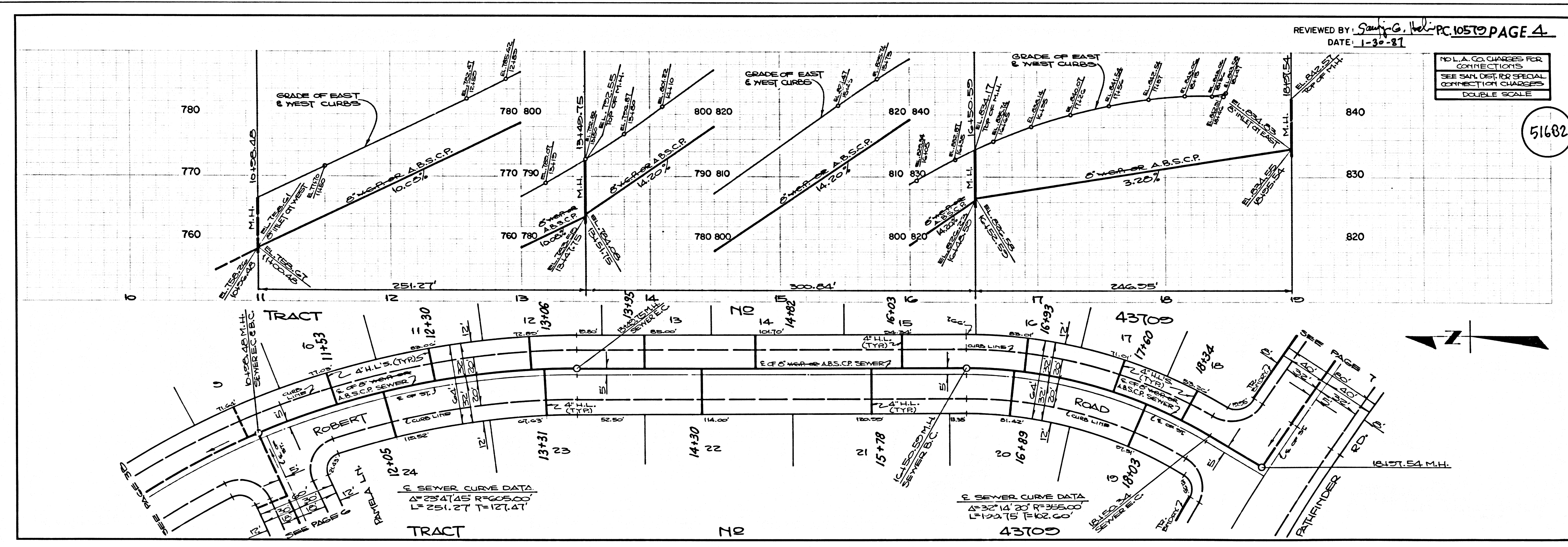
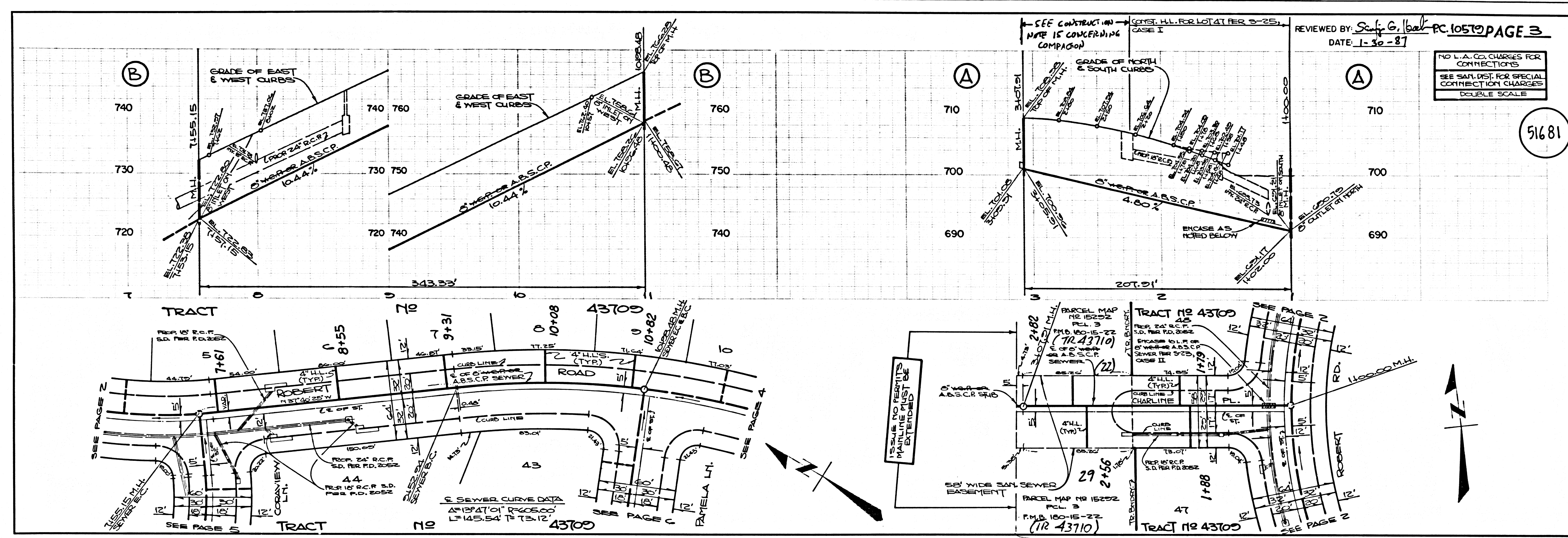
COUNTY OF LOS ANGELES, CALIFORNIA
 THOMAS A. TIDENANSON, DIRECTOR, DEPARTMENT OF PUBLIC WORKS
 CHARLES W. CARRY, CHIEF ENGINEER, COUNTY SANITATION DISTRICT NO. 21
 APPROVED: [Signature] 2/17/87 DATE: 2/17/87
 APPROVED: [Signature] 2/17/87 DATE: 2/17/87
 CHECKED: [Signature] 2/13/87 DATE: 2/13/87
 REG. C.E. NO. 10241
 L.A. PUENTE BLDG. DIST. 2



1

BC 1021 29

COPIED 5/17/87



5

51681

51682

50734 IN TRACT

REVIEWED BY: *Stanley G. Holt* PC 10570 PAGE 3

DATE: 1-30-87

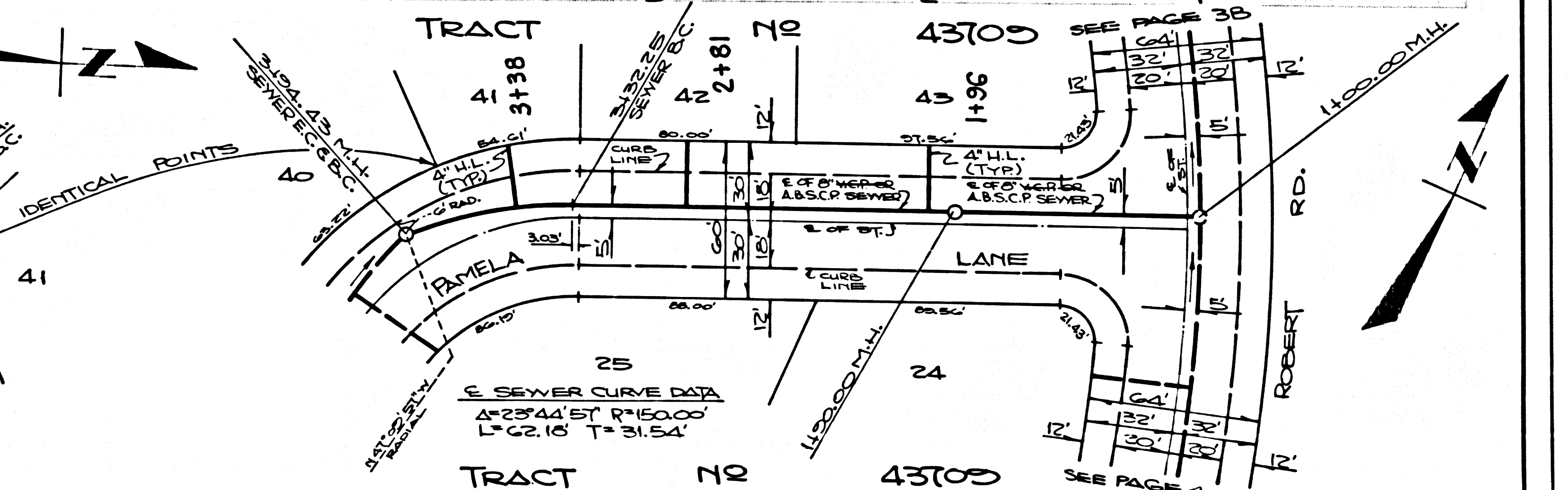
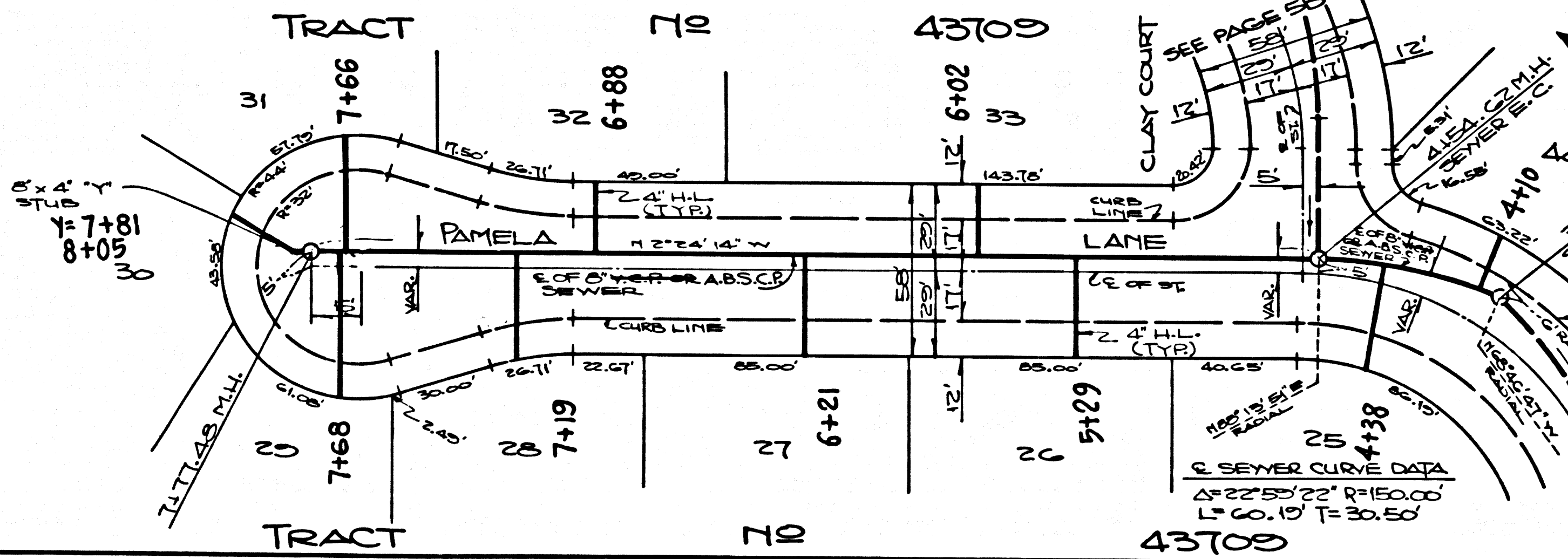
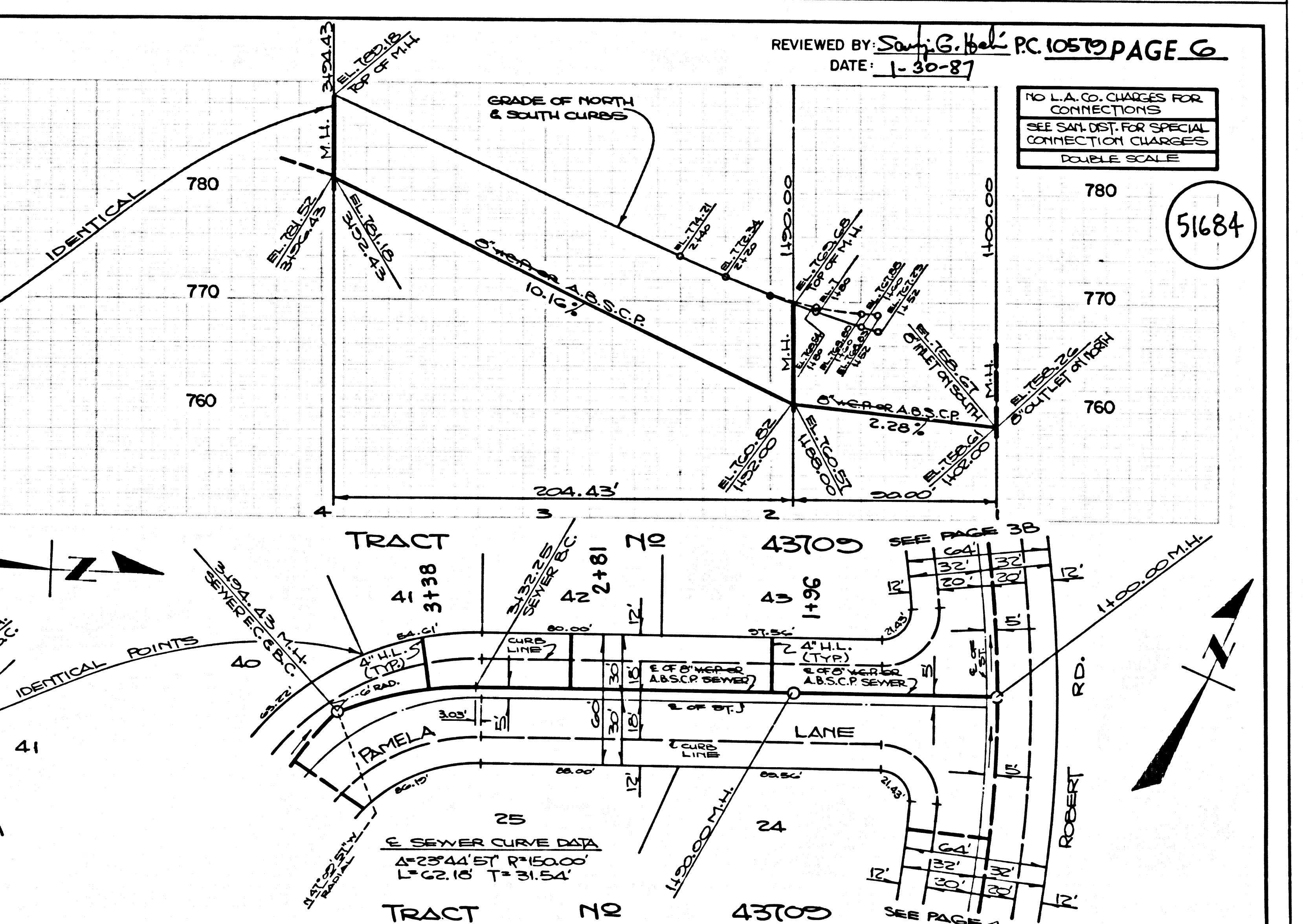
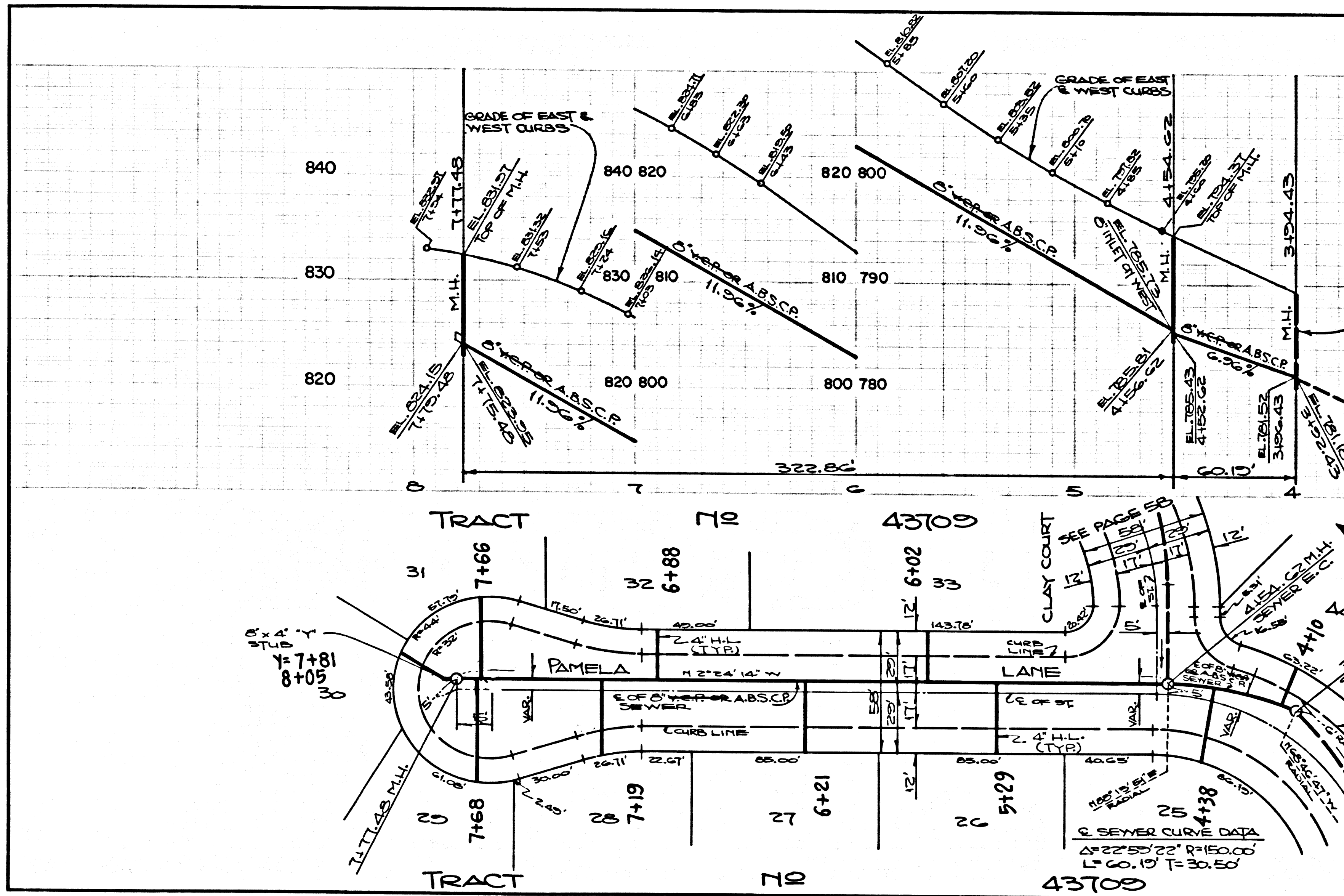
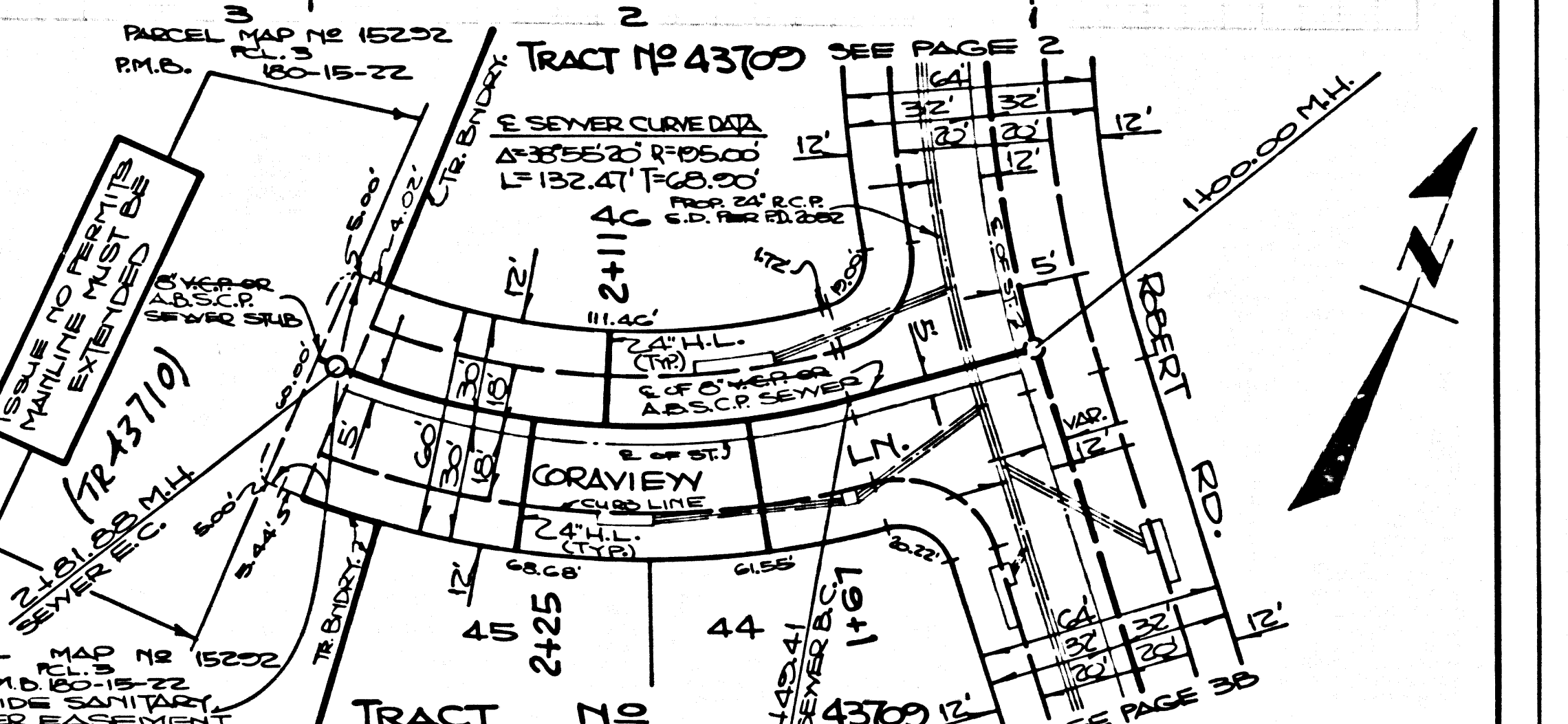
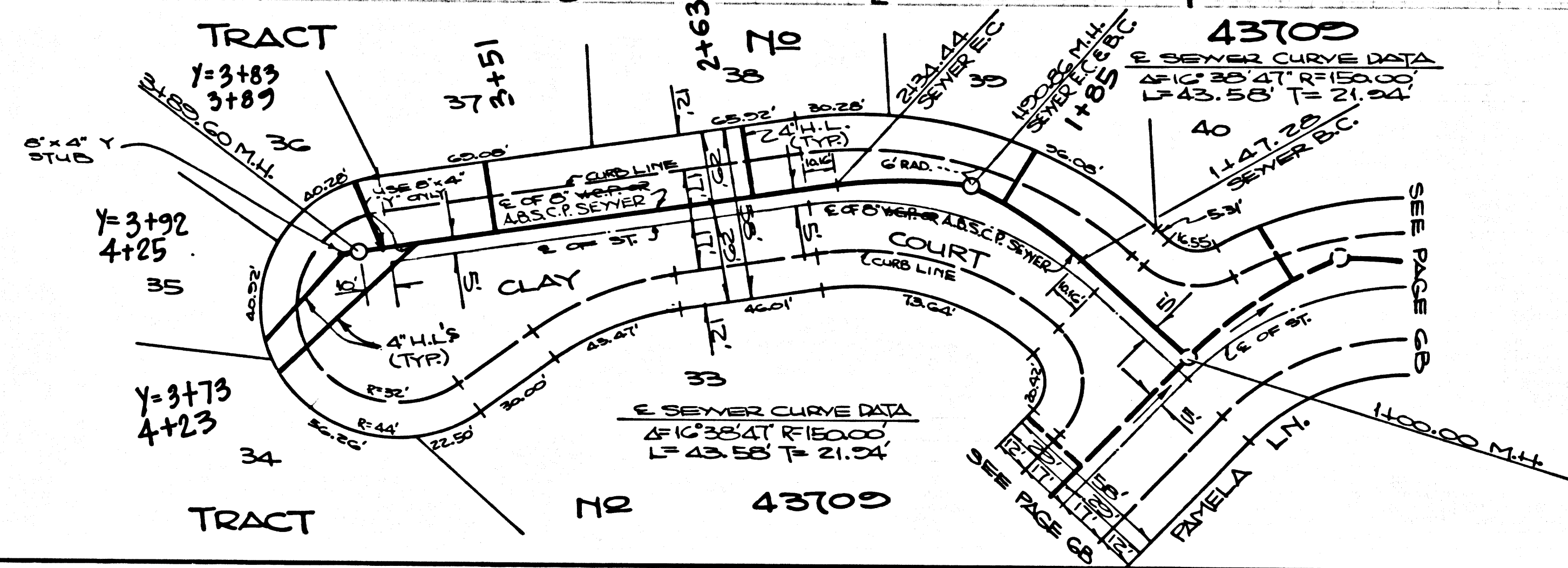
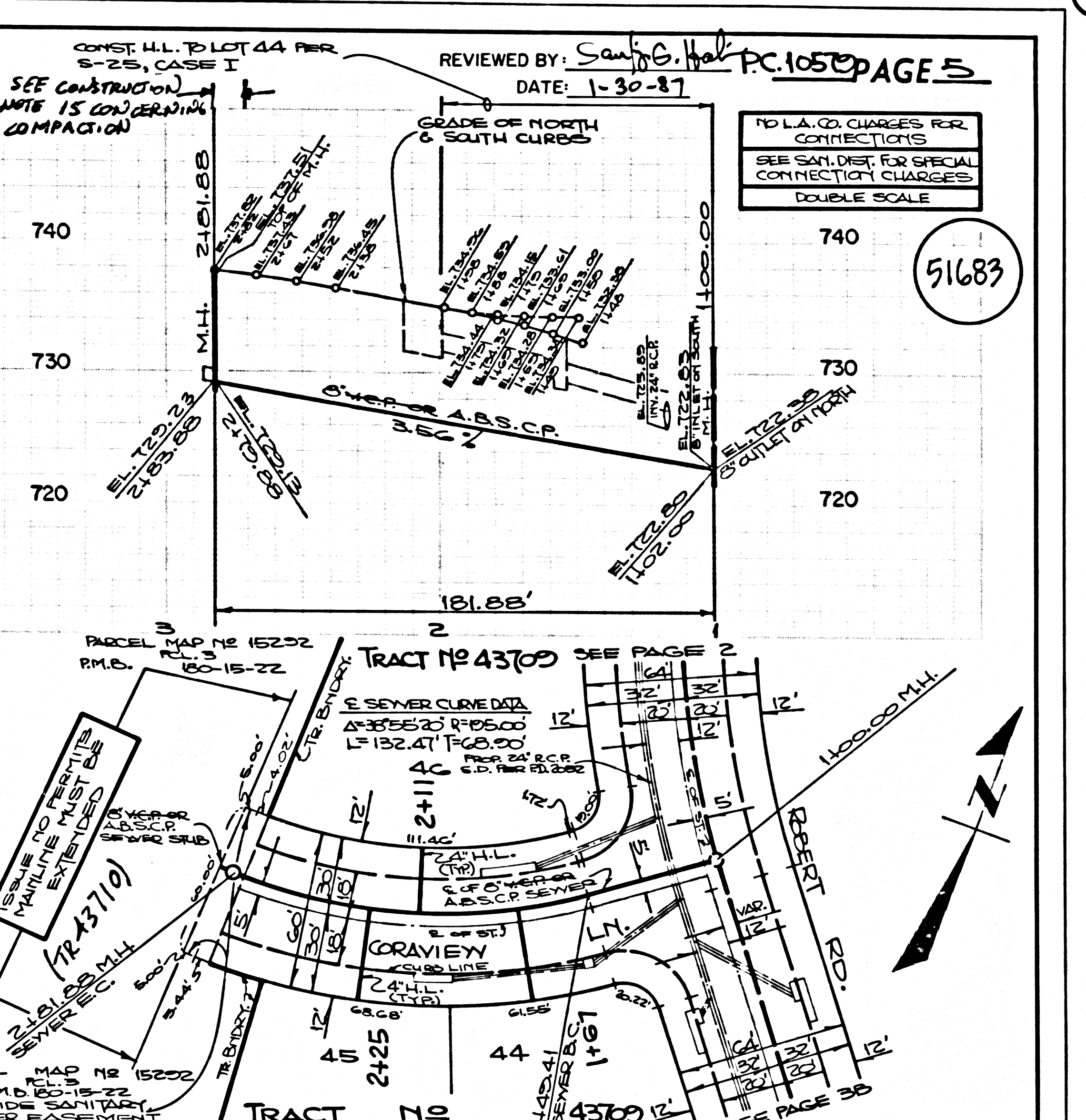
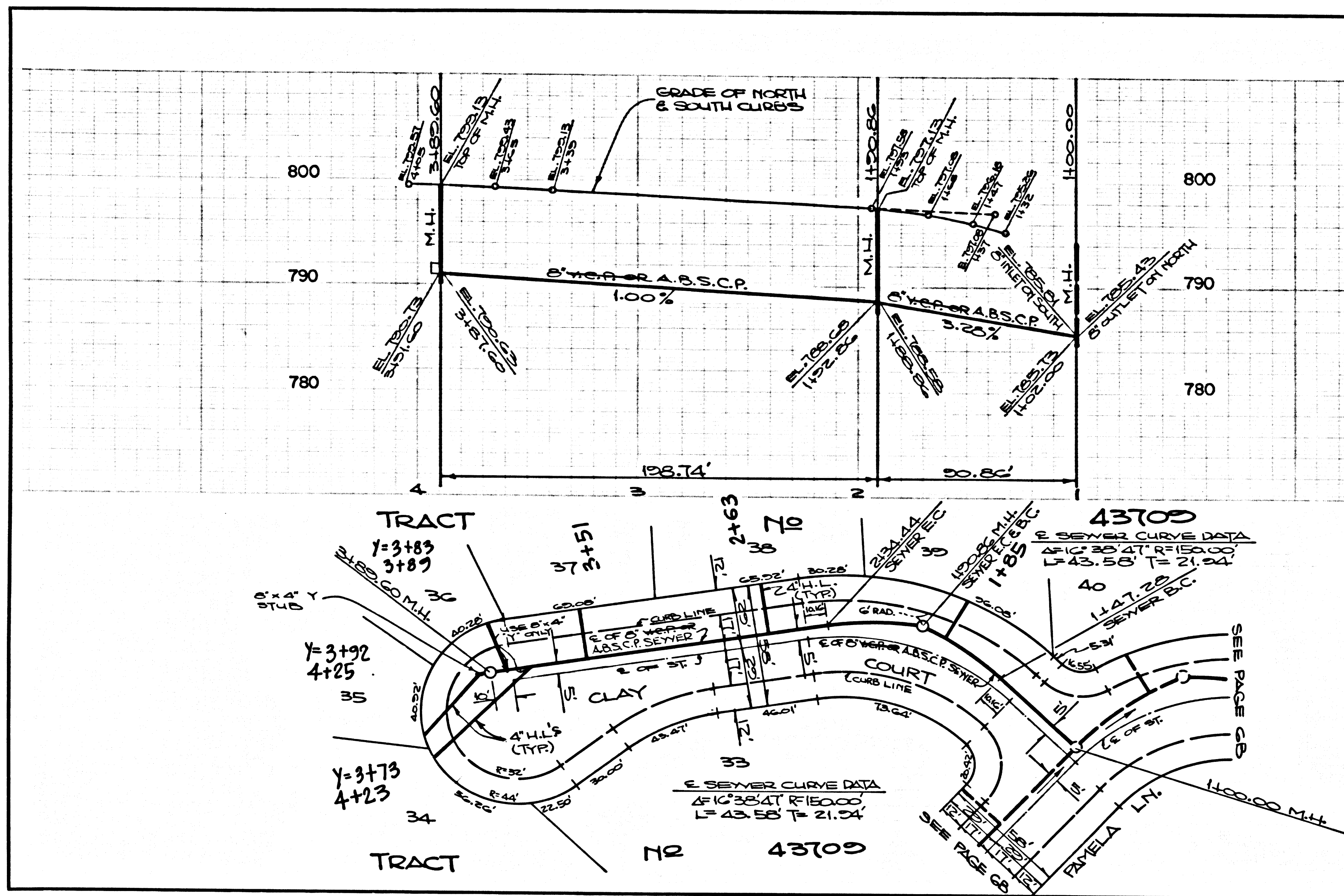
REVIEWED BY: *Stanley G. Holt* PC 10570 PAGE 4

DATE: 1-30-87

NO L.A. CO. CHARGES FOR CONNECTIONS
SEE SAN. DIST. FOR SPECIAL CONNECTION CHARGES
DOUBLE SCALE

NO L.A. CO. CHARGES FOR CONNECTIONS
SEE SAN. DIST. FOR SPECIAL CONNECTION CHARGES
DOUBLE SCALE

ISSUE NO. 2010
MAINLINE MUST BE
CONTINUED



51683

51684

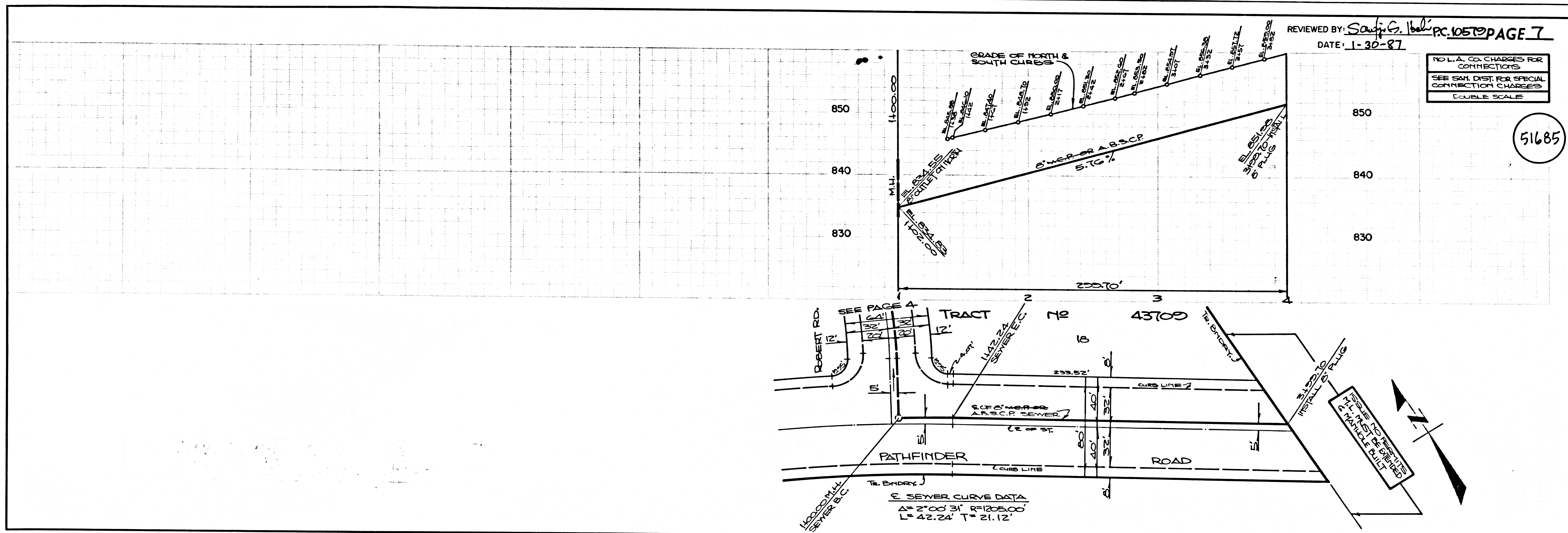
5

6

PC 1059 PAGE 5

PC 1059 PAGE 6

TRACT 43709



REVIEWED BY: *Saufer, G. Webb* PC. 057 PAGE 7
 DATE: 1-30-87

NO L.A. CO. CHARGES FOR CONNECTIONS
 SEE SAN. DIST. FOR SPECIAL CONNECTION CHARGES
 CURVE SCALE

51685

SEWER CURVE DATA
 R=27' 00" ST, R=205.00
 L=42.24' T=21.12'

PAGE

④

EC 10E16

TRACT 45 43100