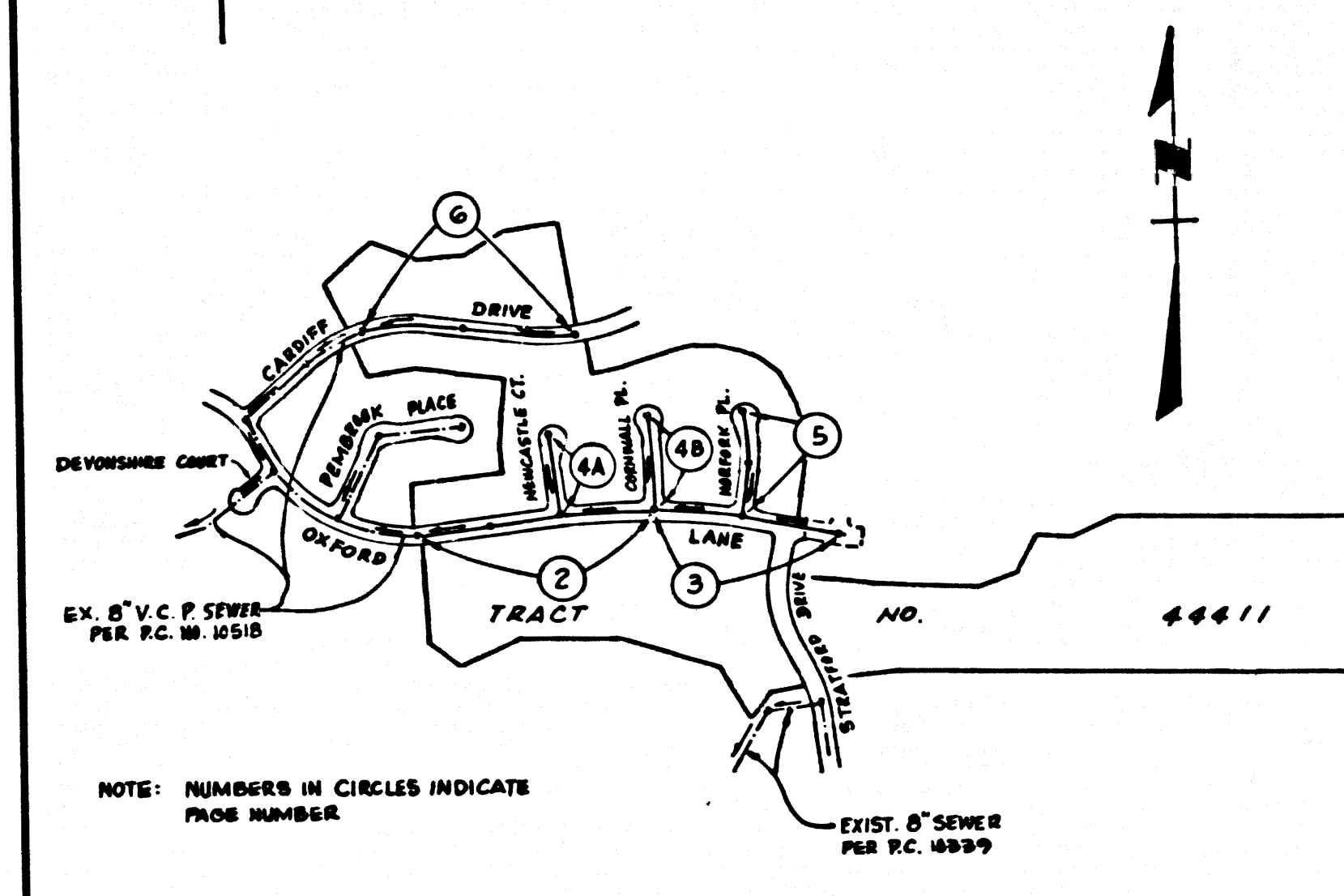


B.M. CL 2911 ELEV. 1188.388
 F.C. MON. CONC. HDWL. 8" DIA. 57' 20" FT. W. C/L
 SAN FERNANDO ROAD 4' 08" 41' S. OF
 SARGIS R. R. STA. AND (B.M. 1800910 1963)
 NEWHALL QUAD. 1972



INDEX MAP
 SCALE: 1"=600'
 P.C. 10596
 T.R. NO. 44411

- DOUBLE SCALE
- FULL COMPLIANCE WITH PART IV OF THE SPECIAL PROVISIONS IS REQUIRED FOR THE INSTALLATION OF A.B.S. COMPOSITE PIPE.
 - MANHOLE LITTER STOP COVERS AND CLAMPS ARE REQUIRED FOR THE CONNECTION OF A.B.S. COMPOSITE PIPE TO MANHOLE STRUCTURES.
 - A.B.S. SOLID WALL PIPE MUST BE USED FOR WYE AND HOUSE LATERAL CONNECTIONS TO A.B.S. COMPOSITE MAINLINE SEWER PIPE.
 - A.B.S. COMPOSITE PIPE SHALL BE REDEED IN CONFORMANCE WITH THE TABLE IN SECTION 8-3.1 OF PART IV OF THE SPECIAL PROVISIONS.
 - THREE DEGREE DEFLECTION COUPLERS ARE REQUIRED FOR RADIUS OF CURVATURE LESS THAN 300 FEET WHEN USING 8" A.B.S. COMPOSITE PIPE.
 - NO CONNECTIONS FOR DISPOSAL OF INDUSTRIAL WASTE IS ALLOWED IF A.B.S. COMPOSITE PIPE IS USED.
 - SEWER LINE CURVATURE SHALL NOT BE ACHIEVED BY PULLING OF JOINTS OR BEVELING PIPE ENDS WHEN USING PLASTIC PIPE INCLUDING A.B.S. COMPOSITE PIPE.
 - ALL WYES AND/OR HOUSE LATERALS ARE TO BE LOCATED AT LEAST FIVE FEET APART AND WHEN POSSIBLE NOT CLOSER THAN FIVE FEET TO ANY MANHOLE.
 - A.B.S. SOLID WALL PIPE IS NOT ACCEPTABLE FOR USE AS MAINLINE SEWER PIPE.
 - ONLY WYE BRANCHES ARE TO BE USED FOR CONNECTION TO A.B.S. COMPOSITE MAINLINE SEWER PIPE.
 - NO CONNECTION FOR THE DISPOSAL OF INDUSTRIAL WASTES SHALL BE MADE TO SEWER SHOWN ON THESE DRAWINGS UNTIL A PERMIT FOR INDUSTRIAL WASTEWATER DISCHARGE HAS BEEN ISSUED BY THE SANITATION DISTRICTS FOR SAID CONNECTION.

LOTS 38, 39 & 100 ARE OPEN SPACE LOTS & RESTRICTED TO AN
 CONSTRUCTION AND WILL NOT BE SUBJECT TO A HOME LATERAL.

ISSUE H.L. PERMITS FOR LOTS 83 AND 84 FROM P.C. 10518

ISSUE NO. PERMIT UNTIL P.C. 10518 IS ACCEPTED FOR
 PUBLIC USE BY COUNTY OF L.A.

THE EXISTENCE AND LOCATION OF ANY UNDERGROUND UTILITY PIPES
 OR STRUCTURES SHOWN ON THESE PLANS ARE OBTAINED BY A SEARCH
 OF AVAILABLE RECORDS TO THE BEST OF MY KNOWLEDGE THERE ARE
 NO EXISTING UTILITIES EXCEPT AS SHOWN ON THESE PLANS
 THE CONTRACTOR IS REQUIRED TO TAKE SUCH PRECAUTIONARY
 MEASURES TO PROTECT THE UTILITY LINES SHOWN AND ANY OTHER
 LINES NOT OF RECORD OR NOT SHOWN ON THESE PLANS.

Edward L. Pearson
 EDWARD L. PEARSON R.C.E. 9783

- GENERAL NOTES:
- ELEVATIONS ARE IN FEET ABOVE U.S.C. & G.S. SEA LEVEL DATUM OF 1929.
 - NO REVISIONS SHALL BE ALLOWED IN THESE PLANS WITHOUT THE APPROVAL OF THE DIRECTOR OF PUBLIC WORKS.
 - NO REPRESENTATIVE OF THE DEPT. OF PUBLIC WORKS WILL SURVEY OR LAY OUT ANY PORTION OF THE WORK.
 - GRADES TO WHICH THIS IMPROVEMENT IS TO BE CONSTRUCTED ARE SHOWN ON PLANS AS "PROFILES" GRADE POINTS FOR TOP OF CURB, CENTER LINE OF STREETS, OR CENTER LINE OF ALLEYS ARE SHOWN BY CIRCLES ON PROFILES AT ALL POINTS BETWEEN DESIGNATED POINTS THE GRADE SHALL BE ESTABLISHED SO AS TO CONFORM TO A STRAIGHT LINE DRAWN BETWEEN SAID DESIGNATED POINTS.
 - THE PRIVATE ENGINEER SHALL FURNISH THE DATE OF PUBLIC BIDDING WITH GRADE SHEETS AND STATIONING FOR ALL HOUSE LATERALS AND "Y" OR "T" BRANCHES AND SHALL PROVIDE STAKES FOR THEM AT THEIR PROPER LOCATIONS WITH STATIONING FULLY MARKED ALL HOUSE LATERALS SHALL BE CONSTRUCTED IN A STRAIGHT ALIGNMENT AT RIGHT ANGLES FROM THE MAIN LINE SEWER EXCEPT AS SHOWN ON THE PLANS. HOUSE LATERALS FROM CHIMNEYS SHALL NOT HAVE AN ANGLE OF LESS THAN 45° WITH THE MAIN LINE SEWER. ANY CHANGE IN ALIGNMENT SHALL BE REQUESTED IN WRITING BY THE PRIVATE ENGINEER.
 - THE PRIVATE ENGINEER SHALL FURNISH THE HOUSE LATERAL DEPTH AT THE PROPERTY LINE BELOW THE TOP OF CURB ELEVATION FOR EACH HOUSE LATERAL ON THE GRADE SHEET.
 - BEFORE WORK CAN BE STARTED, THE CONTRACTOR MUST OBTAIN A PERMIT TO EXCAVATE IN COUNTY STREETS FROM THE COMST. DIV. OF THE LOS ANGELES DEPT. OF PUBLIC WORKS PROJECT NO. 8 AND PAY A FEE TO THE DIRECTOR OF PUBLIC WORKS, 2284 ALCAZAR ST., LOS ANGELES, CA 90008 TO COVER THE COST OF CONSTRUCTION INSPECTION AND RECORD PLANS.
 - IF WORK IS TO BE DONE ON STATE HIGHWAY A PERMIT MUST BE OBTAINED FROM THE STATE OF CALIFORNIA, DIVISION OF HIGHWAYS, 120 SOUTH SPRING STREET, LOS ANGELES, CALIFORNIA.
 - APPROVAL OF THIS PLAN BY THE COUNTY OF LOS ANGELES DOES NOT CONSTITUTE A REPRESENTATION AS TO THE ACCURACY OF THE LOCATION OF OR THE EXISTENCE OR NON-EXISTENCE OF ANY UNDERGROUND UTILITY PIPE OR STRUCTURE WITHIN THE LIMITS OF THIS PROJECT. THIS NOTE APPLIES TO ALL PAGES.
 - REFER TO SECTION 7.10.4.1 OF THE STANDARD SPECIFICATIONS REGARDING SAFETY CORDS.
 - PRIOR TO THE ISSUANCE OF THE REQUIRED SEWER CONSTRUCTION PERMIT, THE CONTRACTOR SHALL OBTAIN AND FILE WITH THE DEPT. OF PUBLIC WORKS COPIES OF A PERMIT TO EXCAVATE IN COUNTY STREETS FROM THE COMST. DIV. AT THE DEPT. OF PUBLIC WORKS, A PERMIT FOR EXCAVATIONS AND TRENCHES FROM THE STATE OF CALIFORNIA, DIVISION OF INDUSTRIAL SAFETY AND CERTIFICATE OF WORKERS COMPENSATION INSURANCE WITH THE DEPARTMENT OF COUNTY ENGINEER, 2284 ALCAZAR ST., 4TH FLOOR, LOS ANGELES, CALIFORNIA 90008 NAMED AS THE CERTIFICATE HOLDER TO BE NOTIFIED 30 DAYS PRIOR TO CANCELLATION OF POLICY.

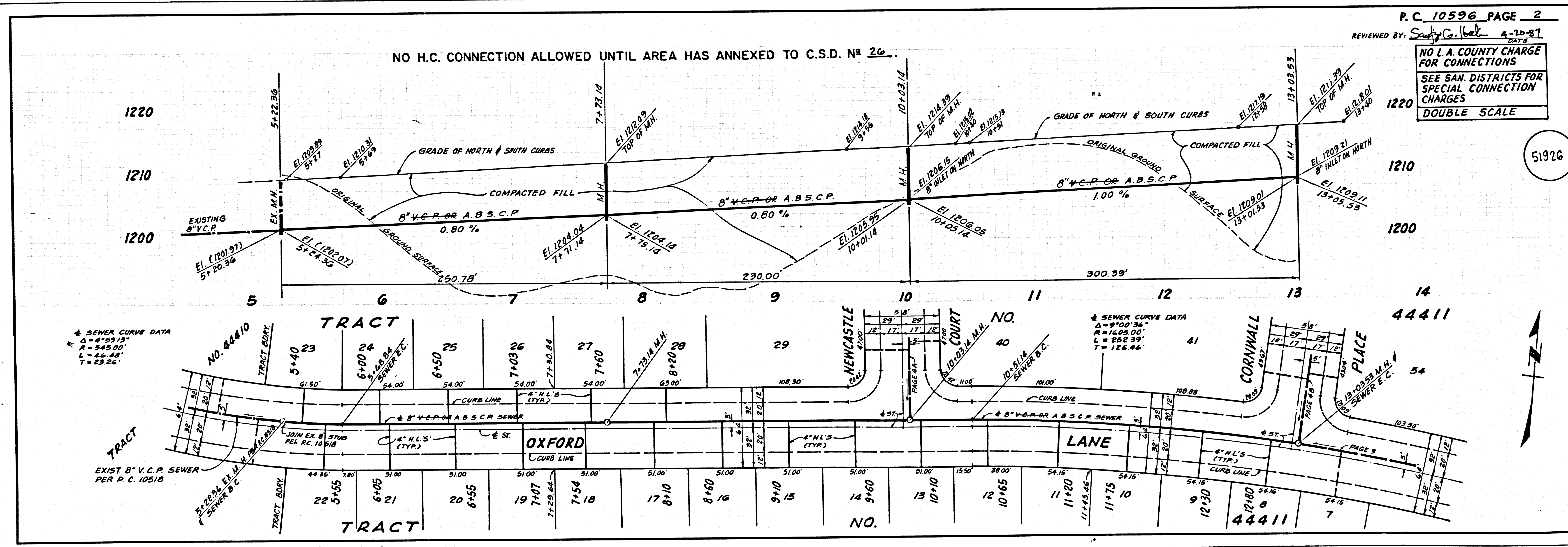
- CONSTRUCTION NOTES:
- WORK SHALL BE CONSTRUCTED ACCORDING TO THE STANDARD SPECIFICATIONS FOR PUBLIC WORKS CONSTRUCTION 1988 EDITION WITH THE SUPPLEMENTS AND COUNTY ENGINEER SPECIAL PROVISIONS FOR THE CONSTRUCTION OF SANITARY SEWERS DATED: MAR. 21, 1978.
 - THE CONTRACTOR SHALL NOTIFY THE CONSTRUCTION DIVISION BY TELEPHONE 226-2728 AT LEAST TWENTY-FOUR HOURS BEFORE STARTING ANY WORK UNDER THIS CONTRACT.
 - HOUSE LATERALS TO BE CONSTRUCTED WITHIN 4 FEET OF PROPERTY LINE 8 FEET BELOW CURB GRADE EXCEPT AS NOTED.
 - WYE OR TEE BRANCHES MAY BE USED FOR CONNECTIONS TO MAINLINE SEWERS EXCEPT AS NOTED.
 - ALL STRUCTURES SHALL BE EITHER BRICK MANHOLES PER S-3 OR PRECAST CONCRETE MANHOLES PER S-38, EXCEPT AS NOTED.
 - PROVIDE STAKES ON THE PROPERTY LINE OR PROPERTY LINES PRODUCED AT RIGHT ANGLES TO THE SEWER LINE AT THE CENTER LINE OF EACH MANHOLE.
 - MANHOLE TOPS IN UNIMPROVED RIGHTS OF WAY TO BE SIX INCHES ABOVE FINISHED GRADE.
 - BITUMED CLAY PIPE JOINTS SHALL BE TYPE "D" OR "G" PER STANDARD SPECIFICATIONS SECTION 208-2.
 - IF A POWER POLE IS WITHIN THREE FEET OF THE SEWER, THE SEWER SHALL BE ENCASED PER S-22 CASE R, TWO FEET ON EACH SIDE FROM THE POINT OF INTERFERENCE.
 - IF DURING THE COURSE OF CONSTRUCTION IT IS DETERMINED THAT THERE IS LESS THAN FOUR FEET OF COVER OVER THE TOP OF A MAINLINE OR HOUSE LATERAL SEWER WHICH IS NOT INDICATED ON THE PLANS THE PIPE SHALL BE ENCASED PER S-22 CASE H UNLESS OTHERWISE APPROVED BY THE DIRECTOR OF PUBLIC WORKS.
 - ALL JOINTS BETWEEN CAST IRON PIPE AND BITUMED CLAY PIPE SHALL BE MADE WITH A RUBBER SLEEVE JOINT TYPE "C" OR "D" WITH BUTTING IF NECESSARY, PER STANDARD SPECIFICATIONS SECTION 208-3.
 - SEWERS TO BE TESTED FOR LEAKAGE PER SECTION 306-1.0 OF THE STANDARD SPECIFICATIONS AND SPECIAL PROVISIONS.
 - RESURFACE ALL TRENCHES WITHIN PAVED AREAS TO MEET L.A. COUNTY PUBLIC WORKS CALIFORNIA STATE HIGHWAY REQUIREMENTS IN ACCORDANCE WITH PERMITS.
 - FULL COMPLIANCE WITH SECTION 306-1.38 OF THE STANDARD SPECIFICATIONS WILL BE REQUIRED FOR BACKFILL IN STREETS. CERTIFICATION OF BACKFILL COMPACTION AND SAND EQUIVALENTS BY A QUALIFIED, REGISTERED TESTING LABORATORY SHALL BE PROVIDED BY THE PERMITTEE PRIOR TO THE ISSUANCE OF A CERTIFICATE OF PARTIAL ACCEPTANCE.
 - SPECIAL BACKFILL IN EXCAVATION (A) BACKFILL TRENCH AND REPLACE OTHER EARTH SO AS TO ACHIEVE THE NATURAL OR FINISHED GRADES AND SLOPES SHOWN ON THE GRADING PLAN APPROVED FOR THIS DEVELOPMENT BY THE LAND DEVELOPMENT DIVISION. (B) ALL BACKFILL AND EARTH REPAVED SHALL BE COMPACTED TO A MINIMUM OF 90% OF MAXIMUM IN-SITU PER A.I.M. STD. METHOD OF TEST D9857 AS MODIFIED. ACCEPTABLE CERTIFICATION OF SUCH COMPACTION SHALL BE SUBMITTED TO THE CONSTRUCTION DIVISION.

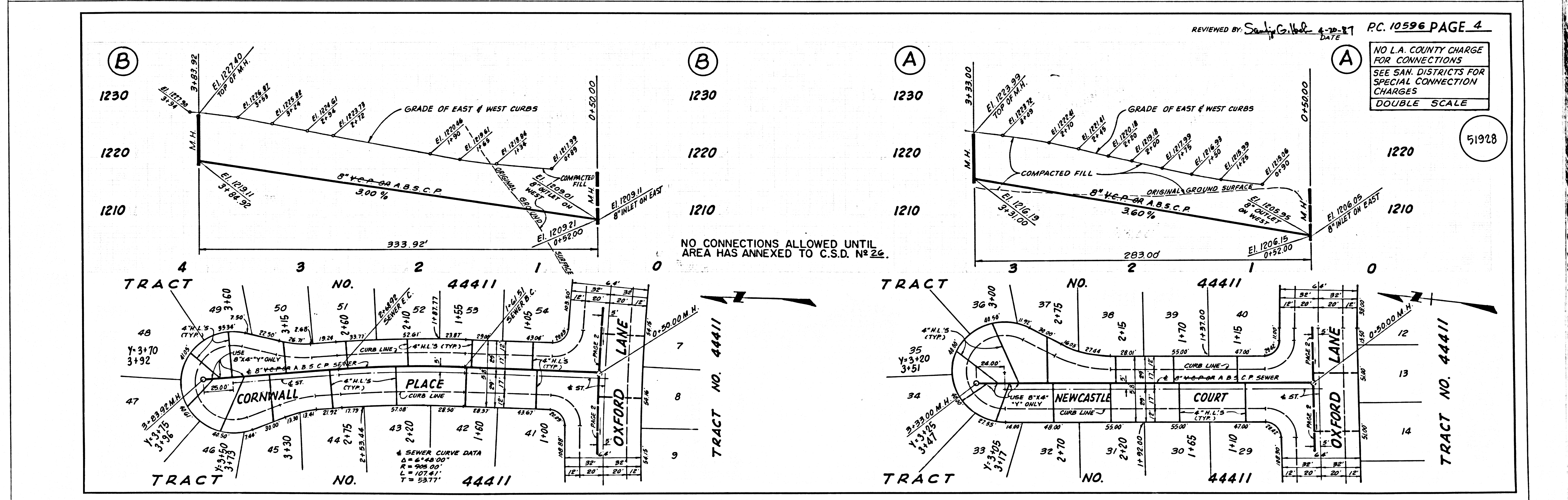
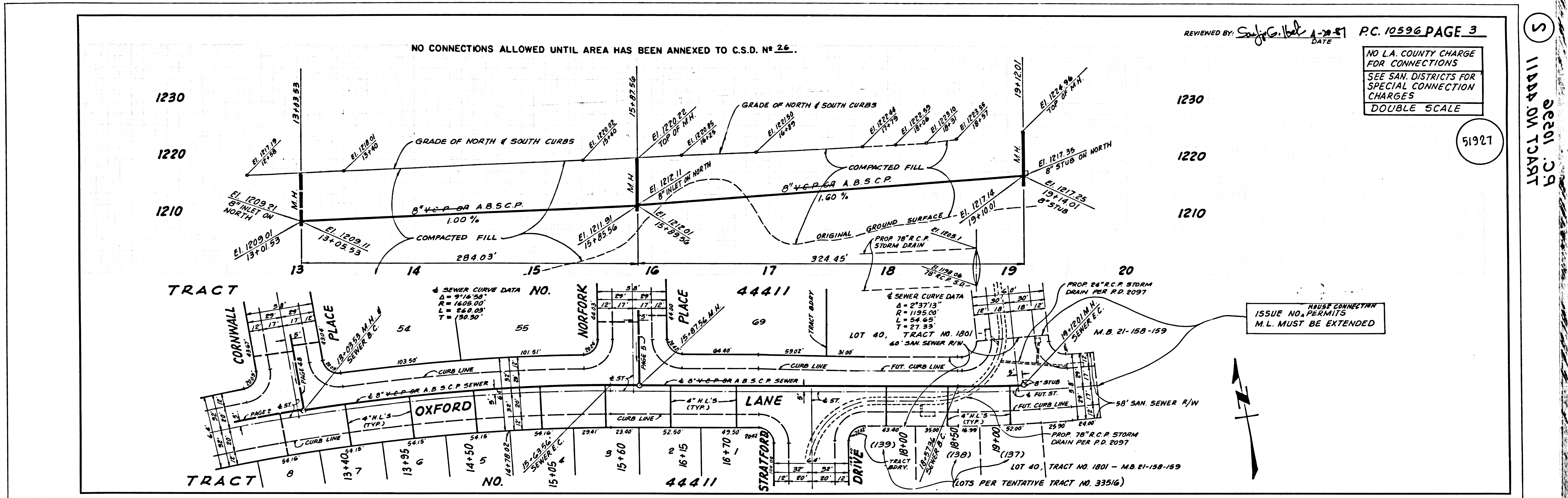
PROFILE, ALIGNMENT AND GRADE OF
SANITARY SEWERS
 TO BE CONSTRUCTED IN
TRACT NO. 44411 51925
PRIVATE CONTRACT NO. 10596
 INDEX A-63, E-6
 3 SHEETS, 6 PAGES
 SCALE: VERT. 1"=8' HORIZ. 1"=40'
 OCTOBER, 1986
 PREPARED IN THE OFFICES OF
 THE PEARSON GROUP
 1555 W. REDONDO BEACH BLVD. GARDENA, CA 90247
 BY: Edward L. Pearson
 REG. C.E. NO. 9783

THE FOLLOWING LATEST REVISED STANDARD PLANS ON FILE IN THE OFFICE OF THE PUBLIC WORKS SHALL APPLY IN THE CONSTRUCTION OF THIS PROJECT:

SEWER	8-1
MANHOLE PUBLIC SAFETY ENCLOSURES	8-2
BRICK MANHOLE	8-3
STANDARD MANHOLE STEP	8-7
MANHOLE FOR SEWER PIPE	8-7
CHARGING AND INCASEMENT	8-28
WYE OR TEE SUPPORT	8-30
ALLOWABLE TRENCH WIDTHS	8-38
LOCKING MANHOLE PLANS AND COVERS	8-38
NON-SINKING PRECAST CONCRETE MANHOLE	8-38

COUNTY OF LOS ANGELES, CALIFORNIA
 THOMAS A. TIDEMANSON
 DIRECTOR OF PUBLIC WORKS
 APPROVED: Dean E. Heston 4-28-87
 CHECKED: [Signature] 8/21/87
 REG. C.E. NO. 18871
 SANTA CLARITA VALLEY BLDG. DIST. 82





51927
 51928
 11444 ON TRACT
 P.C. 10596

