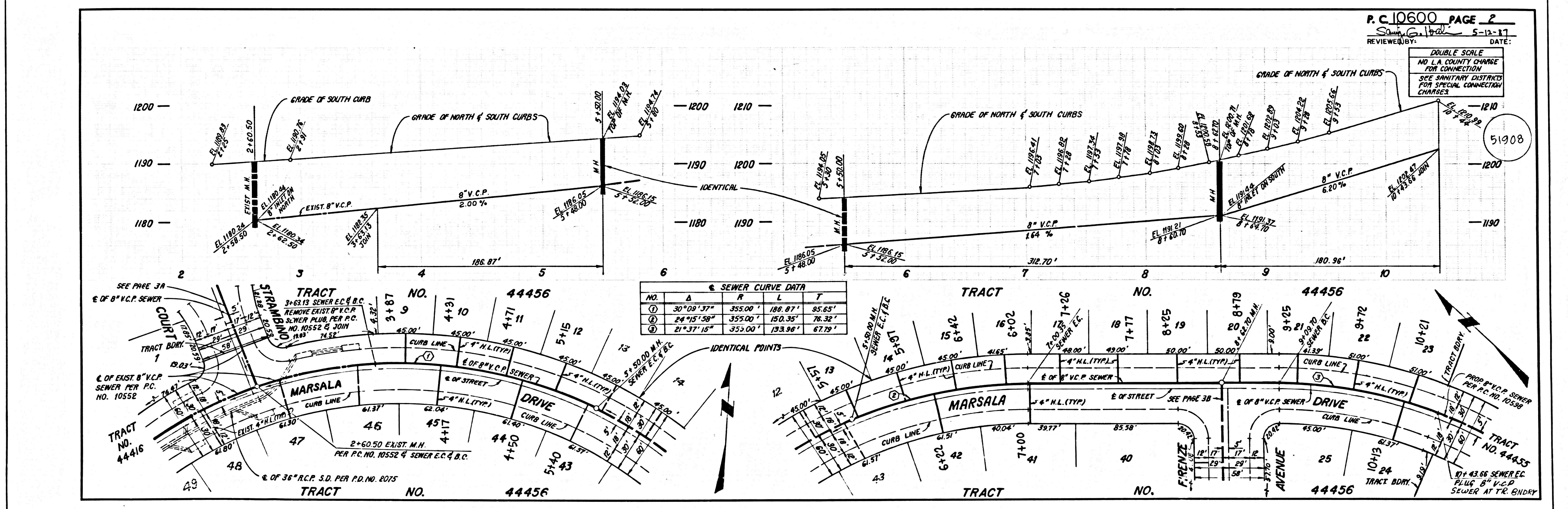


PROFILE, ALIGNMENT AND GRADE OF
SANITARY SEWERS
 TO BE CONSTRUCTED IN
TRACT NO. 44456
PRIVATE CONTRACT NO. 10600
 INDEX: A-48, A-3
 2 SHEETS; 3 PAGES
 51907
 SCALE: VERT. 1" = 4'
 HORIZ. 1" = 40'
 SEPT. 1986
 PREPARED IN THE OFFICES OF
SAND ENGINEERING ASSOCIATES
 15230 BURBANK BLVD, VAN NUYS, CA 91411
 BY: *Ronald K. Horn* (818) 787-8550
 REG. C.E. NO. 18313

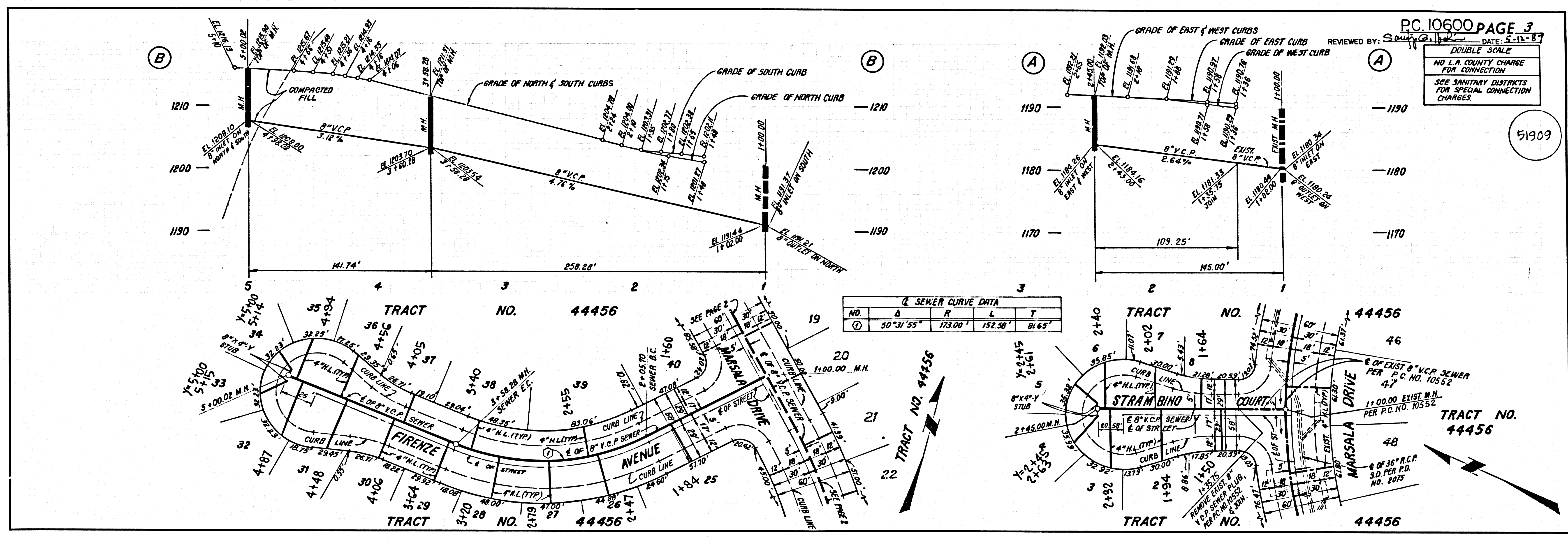
THE FOLLOWING LATEST REVISED STANDARD PLANS ON FILE IN THE OFFICE OF THE DEPARTMENT OF PUBLIC WORKS SHALL APPLY IN THE CONSTRUCTION OF THIS PROJECT:

MINIMUM PUBLIC SAFETY REQUIREMENTS	S-1
BRICK MANHOLE	S-2
STANDARD MANHOLE STEP	S-3
BEDDING FOR SEWER PIPE	S-4
CRACKING AND ENCASUREMENT	S-5
PIPE OR THE SUPPORT	S-6
ALLOWABLE TRENCH WIDTHS	S-7
LOCKING MANHOLE FRAME AND COVER	S-8
NON-REINFORCED PRECAST CONCRETE MANHOLE	S-9

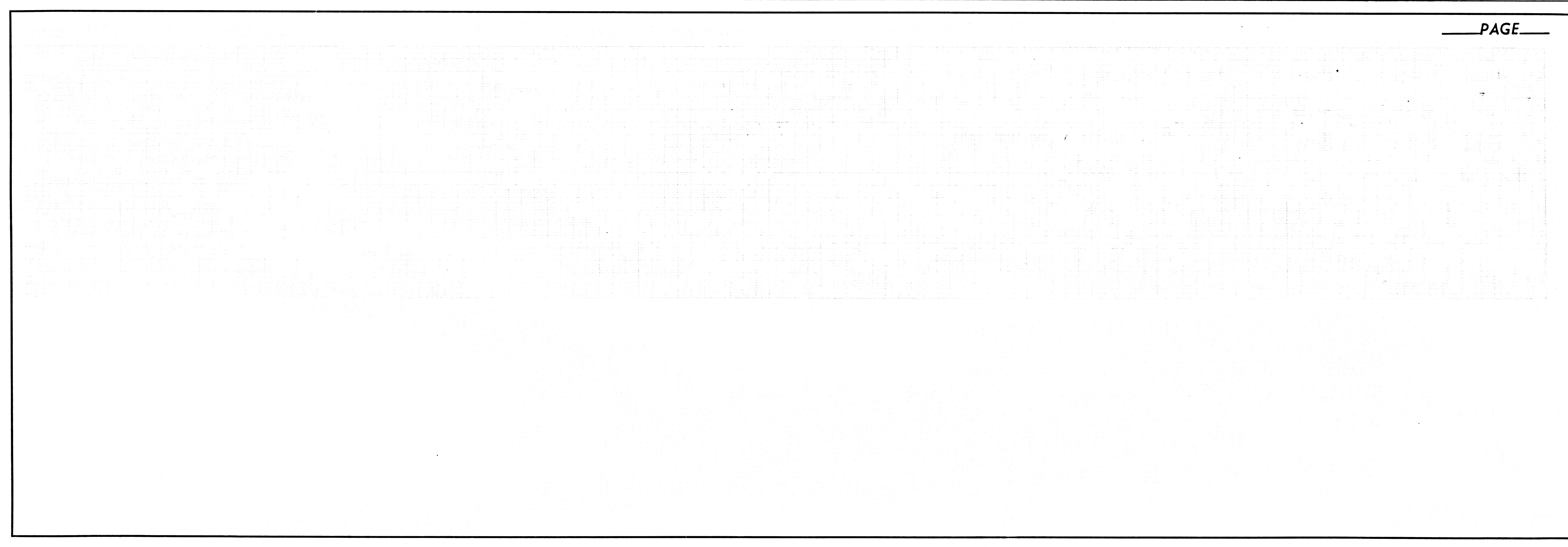
COUNTY OF LOS ANGELES, CALIFORNIA
 THOMAS A. TIDEMANSON, DIRECTOR OF PUBLIC WORKS
 CHARLES W. CARRY, CHIEF ENGINEER
 APPROVED: *Carl H. Blum* 5/21/87 (DATE)
 APPROVED: *John H. Blum* 5/23/87 (DATE)
 CHECKED: *John H. Blum* 5/13/87 (DATE)
 REG. C.E. NO. 4841
 SANTA CLARITA VALLEY BLDG. DIST. 8.2



00001.29
 02444 ON TRACT



00001.09
 02444 ON TRACT



PAGE