

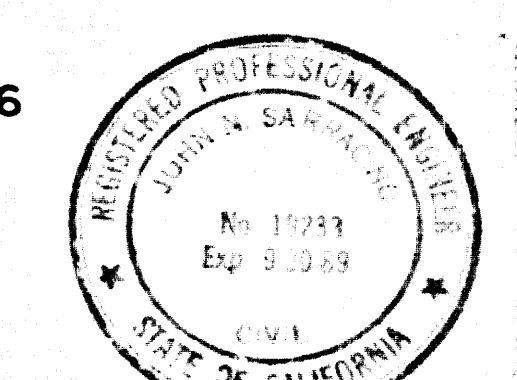
B.M. C.G. 3911 ELEV. 895.556
 L & T IN E END C B 44 FT S & 96 FT
 W C/L INT GRAND AVE & DIAMOND BAR
 BLVD MKD BM C-12
 OTTERBEIN QUAD. 19 75

PRIVATE ENGINEER'S NOTICE TO CONTRACTORS
 THE EXISTENCE AND LOCATION OF ANY UNDERGROUND UTILITY PIPES OR STRUCTURES SHOWN ON THESE PLANS ARE OBTAINED BY A SEARCH OF THE AVAILABLE RECORDS TO THE BEST OF OUR KNOWLEDGE. THERE ARE NO EXISTING UTILITIES EXCEPT AS SHOWN ON THESE PLANS. THE CONTRACTOR IS REQUIRED TO TAKE THE PRECAUTIONARY MEASURES TO PROTECT THE UTILITIES SHOWN AND ANY OTHER LINES NOT OF RECORD OR NOT SHOWN ON THESE PLANS. THE CONTRACTOR SHALL BE RESPONSIBLE FOR NOTIFYING UNDERGROUND SERVICE ALERT AT 1-800-425-4132 TWO WORKING DAYS PRIOR TO ANY EXCAVATION OR CONSTRUCTION.

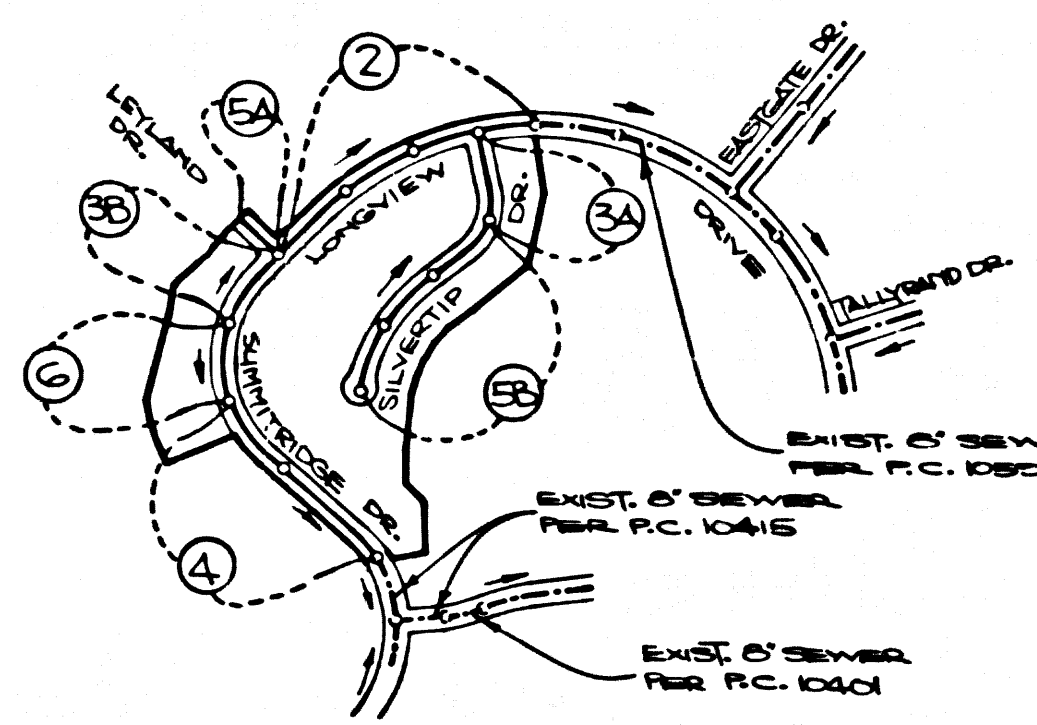
GENERAL NOTES:
 1. ELEVATIONS ARE IN FEET ABOVE U.S.C. & G.S. SEA LEVEL DATUM OF 1929.
 2. NO REVISIONS SHALL BE MADE IN THESE PLANS WITHOUT THE APPROVAL OF THE DEPT. OF PUBLIC WORKS.
 3. NO REPRESENTATIVE OF THE DEPT. OF PUBLIC WORKS WILL SURVEY OR LOCATE ANY PORTION OF THE WORK.
 4. GRADES WHICH THIS IMPROVEMENT IS TO BE CONSTRUCTED ARE SHOWN ON PLANS AND PROFILES. GRADE POINTS FOR TOP OF CURBS, CENTERLINE OF STREETS OR CENTERLINE OF ALLEYS ARE SHOWN BY CIRCLES ON PROFILES. AT ALL POINTS BETWEEN DESIGNATED POINTS THE GRADE SHALL BE ESTABLISHED SO AS TO CONFORM TO A STRAIGHT LINE DRAWN BETWEEN SAID DESIGNATED POINTS.
 5. THE PRIVATE ENGINEER SHALL FURNISH THE DEPT. OF PUBLIC WORKS WITH GRADE SHEETS AND STATIONING FOR ALL HOUSE LATERALS AND "T" OR "Y" BRANCHES AND SHALL PROVIDE STAKES FOR THEM AT THEIR PROPER LOCATIONS WITH STATIONING PLAINLY MARKED. ALL HOUSE LATERALS SHALL BE CONSTRUCTED IN A STRAIGHT ALIGNMENT AT RIGHT ANGLES FROM THE MAINLINE SEWER EXCEPT AS SHOWN ON THE PLANS. HOUSE LATERALS FROM CHIMNEYS SHALL NOT HAVE AN ANGLE OF LESS THAN 45° WITH THE MAIN LINE SEWER. ANY CHANGE IN ALIGNMENT SHALL BE REQUESTED BY THE PRIVATE ENGINEER.
 6. THE PRIVATE ENGINEER SHALL FURNISH THE HOUSE LATERAL DEPTH AT THE PROPERTY LINE, BELOW THE TOP OF CURB ELEVATION FOR EACH HOUSE LATERAL, ON THE GRADE SHEET.
 7. BEFORE WORK CAN BE STARTED THE CONTRACTOR MUST OBTAIN A PERMIT TO EXCAVATE IN COUNTY STREETS FROM THE L.A. COUNTY DEPT. OF PUBLIC WORKS, OFFICE NO. 5, AND PAY A FEE TO THE DIRECTOR OF PUBLIC WORKS, 2250 ALCAZAR ST., LOS ANGELES, CA 90033 TO COVER THE COST OF CONSTRUCTION INSPECTION AND RECORD PLANS.
 8. IF WORK IS TO BE DONE ON A STATE HIGHWAY, A PERMIT MUST BE OBTAINED FROM THE STATE OF CALIFORNIA, DIVISION OF HIGHWAYS, 100 SOUTH SPRING STREET, LOS ANGELES, CALIFORNIA.
 9. APPROVAL OF THIS PLAN BY THE COUNTY OF LOS ANGELES DOES NOT CONSTITUTE A REPRESENTATION AS TO THE ACCURACY OF THE LOCATION OF OR THE EXISTENCE OR NON-EXISTENCE OF ANY UNDERGROUND UTILITY PIPE, OR STRUCTURE WITHIN THE LIMITS OF THIS PROJECT. THIS NOTE APPLIES TO ALL PAGES.
 10. REFER TO SECTION 7.10.4.1 OF THE STANDARD SPECIFICATIONS, REGARDING SAFETY ORDERS.
 11. PRIOR TO THE ISSUANCE OF THE REQUIRED SHER CONSTRUCTION PERMIT, THE CONTRACTOR SHALL OBTAIN AND FILE WITH THE DEPT. OF PUBLIC WORKS COPIES OF A PERMIT TO EXCAVATE IN COUNTY STREETS FROM THE DEPARTMENT OF PUBLIC WORKS, OFFICE NO. 5, AND PAY A FEE TO THE DIRECTOR OF PUBLIC WORKS, 2250 ALCAZAR ST., LOS ANGELES, CA 90033 TO COVER THE COST OF CONSTRUCTION INSPECTION AND RECORD PLANS.
 12. THIS PROJECT IS A PERMIT TO EXCAVATE IN COUNTY STREETS FROM THE DEPARTMENT OF PUBLIC WORKS, OFFICE NO. 5, AND PAY A FEE TO THE DIRECTOR OF PUBLIC WORKS, 2250 ALCAZAR ST., LOS ANGELES, CA 90033 TO COVER THE COST OF CONSTRUCTION INSPECTION AND RECORD PLANS.

DOUBLE SCALE PROFILE, ALIGNMENT AND GRADE OF
SANITARY SEWERS
 TO BE CONSTRUCTED

TRACT NO 42574
 PRIVATE CONTRACT NO. 10602
 INDEX: U149, E-1
 3 SHEETS, 6 PAGES
 SCALE: VERT. 1" = 8' HORIZ. 1" = 40'
 OCTOBER, 1986
 PREPARED IN THE OFFICES OF
LIND & HILLERUD, INC.
 205 HUNTINGTON DRIVE
 SAN MARINO, CA 91768
 BY: [Signature] REG. C.E. NO. 19333



NOTE: NUMBERS IN CIRCLES INDICATE PAGE NUMBERS



INDEX MAP
 TRACT NO. 42574
 P.C. 10602
 SCALE: 1" = 600'

CONSTRUCTION NOTES CONT.

- 16. FULL COMPLIANCE WITH PART IV OF THE SPECIAL PROVISIONS IS REQUIRED FOR THE INSTALLATION OF A.B.S. COMPOSITE PIPE.
- 17. MANHOLE WATER STOP GASKETS AND CLAMPS ARE REQUIRED FOR THE CONNECTION OF A.B.S. COMPOSITE PIPE TO MANHOLE STRUCTURES.
- 18. A.B.S. SOLID WALL PIPE MUST BE USED FOR WYE AND HOUSE LATERAL CONNECTIONS TO A.B.S. COMPOSITE MAINLINE SEWER PIPE.
- 19. A.B.S. COMPOSITE PIPE SHALL BE BEDDED IN CONFORMANCE WITH THE TABLE IN SECTION 8.3.1 OF PART IV OF THE SPECIAL PROVISIONS.
- 20. THREE DEGREE DEFLECTION COUPLERS ARE REQUIRED FOR RADII OF CURVATURE LESS THAN 300 FEET WHEN USING A.B.S. COMPOSITE PIPE.
- 21. NO CONNECTIONS FOR DISPOSAL OF INDUSTRIAL WASTE IS ALLOWED IF A.B.S. COMPOSITE PIPE IS USED.
- 22. SEWER LINE CURVATURE SHALL NOT BE ACHIEVED BY PULLING OF JOINTS ON REVEILING PIPE ENDS WHEN USING PLASTIC PIPE INCLUDING A.B.S. COMPOSITE PIPE.
- 23. ALL WYES AND ON-HOUSE LATERALS ARE TO BE LOCATED AT LEAST FIVE FEET APART AND WHEN POSSIBLE NOT CLOSER THAN FIVE FEET TO ANY MANHOLE.
- 24. A.B.S. SOLID WALL PIPE IS NOT ACCEPTABLE FOR USE AS MAINLINE SEWER.
- 25. ONLY WYE BRANCHES ARE TO BE USED FOR CONNECTION TO A.B.S. COMPOSITE MAINLINE SEWER PIPE.

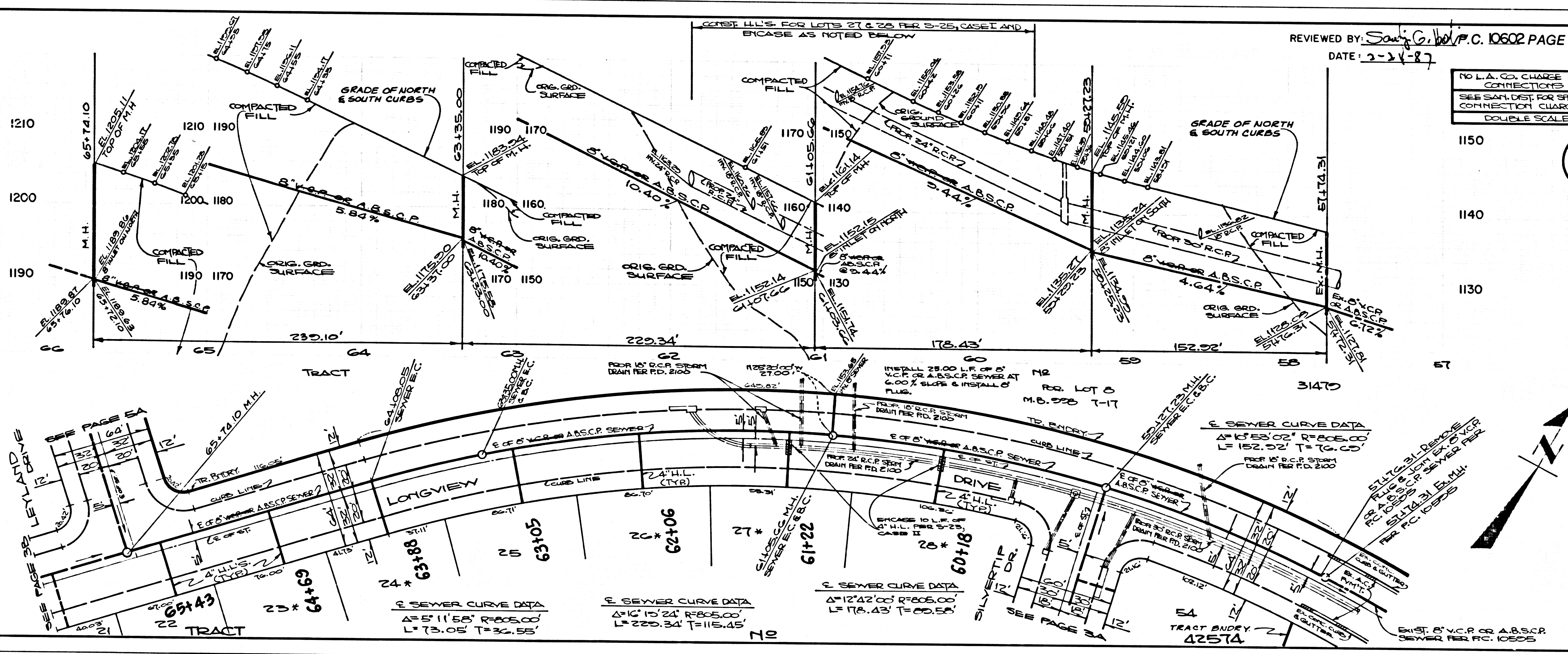
NO CONNECTION FOR THE DISPOSAL OF INDUSTRIAL WASTES SHALL BE MADE TO SEWERS SHOWN ON THESE DRAWINGS UNTIL A PERMIT FOR INDUSTRIAL WASTEWATER DISCHARGE HAS BEEN ISSUED BY THE SANITATION DISTRICTS FOR SAID CONNECTION.
 BEFORE BREAKING INTO OR CONSTRUCTION ON A COUNTY SANITATION DISTRICT SEWER AND PRIOR TO FINAL ACCEPTANCE OF THE PROJECT, SANITATION DISTRICT INSPECTOR SHALL BE NOTIFIED BY PHONE (818) 962-8605 SO THAT REQUIRED INSPECTION CAN BE MADE.

NOISE NO PERMITS UNTIL OUTLET SEWERS P.C. 10602 & P.C. 10415 ARE ACCEPTED FOR PUBLIC USE BY L.A. COUNTY

THE FOLLOWING LATEST REVISED STANDARD PLANS ON FILE IN THE OFFICE OF THE DEPARTMENT OF PUBLIC WORKS SHALL APPLY IN THE CONSTRUCTION OF THIS PROJECT:

LEGEND	8-1
MINIMUM PUBLIC SAFETY REQUIREMENTS	8-2
BRICK MANHOLE	8-3
STANDARD MANHOLE STEP	8-17
BEDDING FOR SEWER PIPE	8-21
CHANGING AND TIE-INS	8-22
WYE OR TEE SUPPORT	8-26
ALLOWABLE TRENCH WIDTHS	8-30
LOCKING MANHOLE FRAME AND COVER	8-38
NON-REINFORCED PRECAST CONCRETE MANHOLE	8-38

COUNTY OF LOS ANGELES, CALIFORNIA
 THOMAS A. TIDEMANSON, DIRECTOR
 DEPARTMENT OF PUBLIC WORKS
 APPROVED: [Signature] 2/27/87
 OFFICE ENGINEER
 DATE: 4/4/87
 CHECKED: [Signature] 2/27/87
 REG. C.E. NO. 16844
 SAN DIMAS BLDG. DIST. 10.00



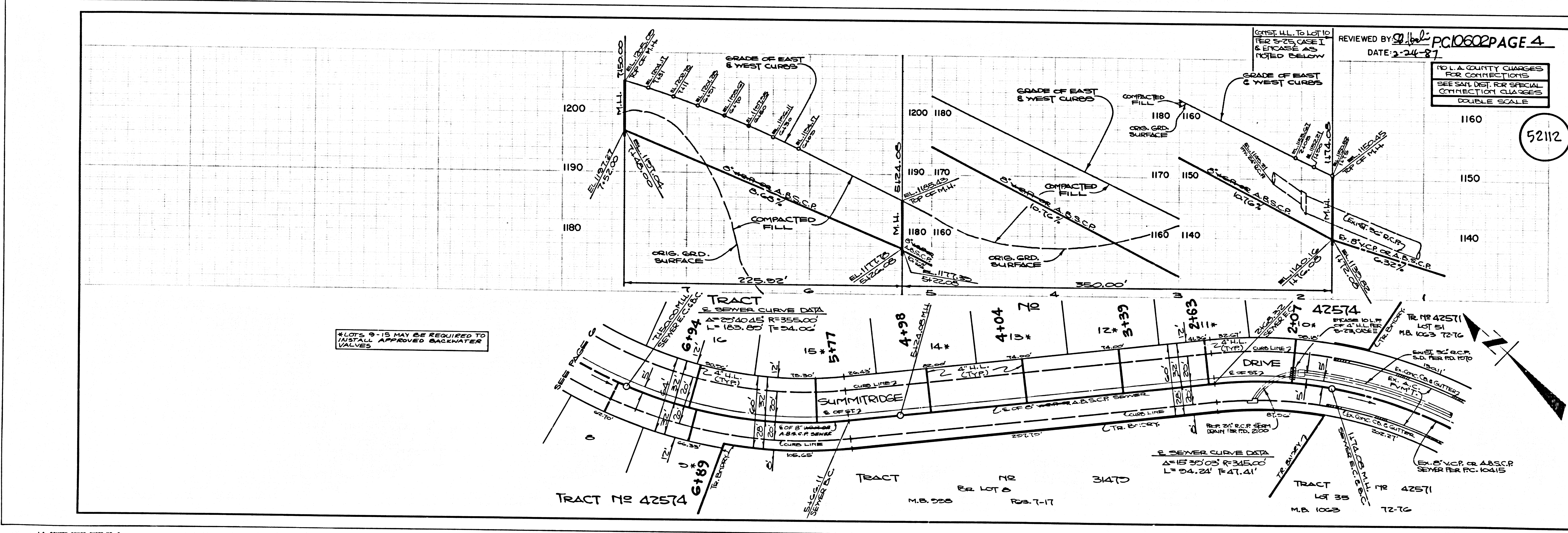
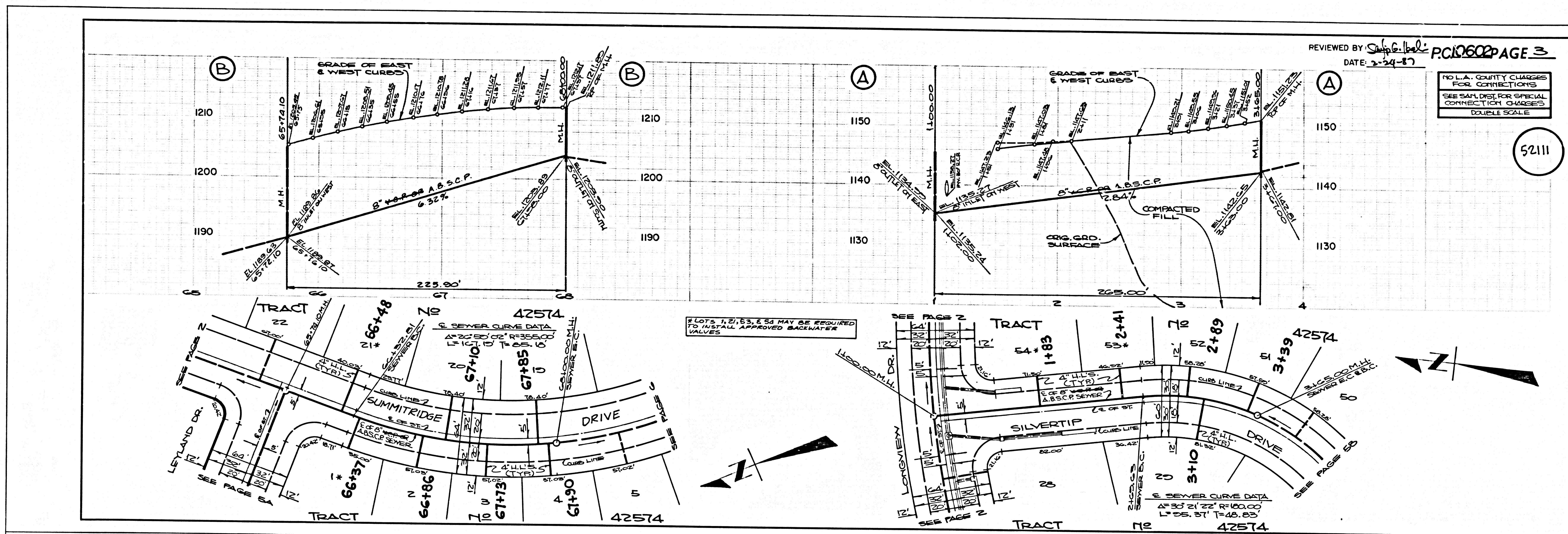
NOTES: 1. 24" & 30" DIA. MAY BE REQUIRED TO INSTALL APPROVED BACKWATER VALVES

NO L.A. CO. CHARGE FOR CONNECTIONS SEE SAN. DIST. FOR SPECIAL CONNECTION CHARGES
 DOUBLE SCALE

REVIEWED BY: [Signature]
 DATE: 2-24-87

NO L.A. CO. CHARGE FOR CONNECTIONS SEE SAN. DIST. FOR SPECIAL CONNECTION CHARGES
 DOUBLE SCALE

SHEET NO. 1 OF 3
 SANITARY SEWER P.C. 10602

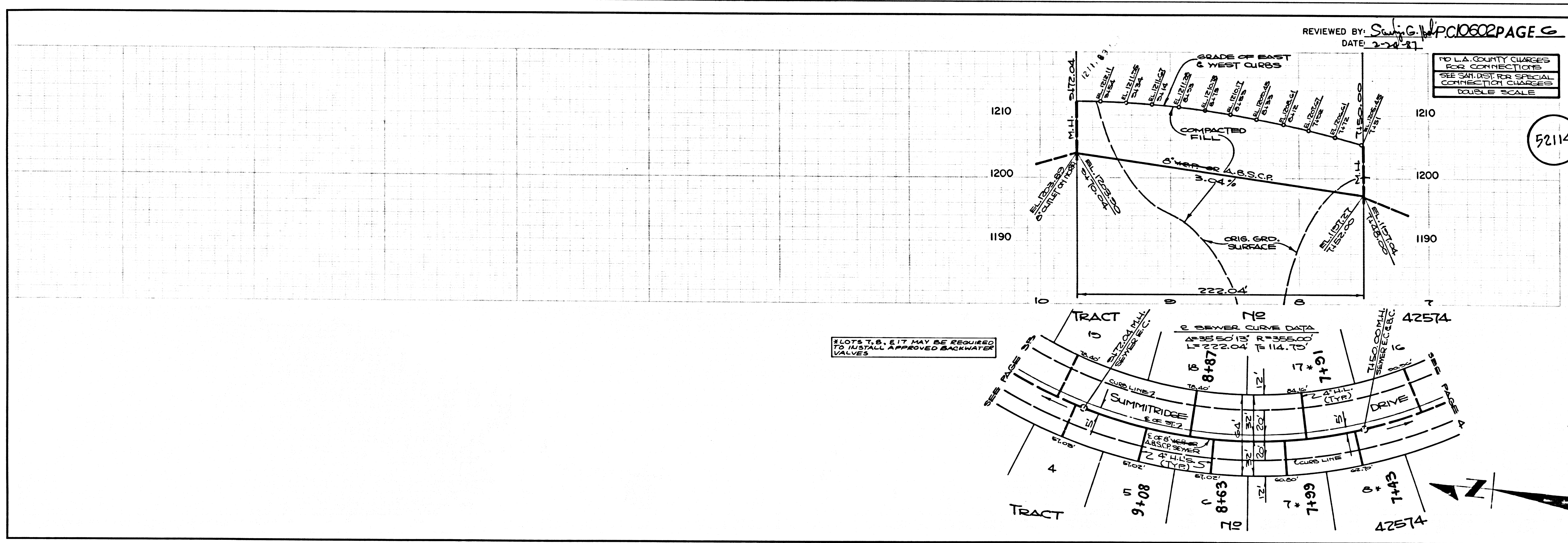
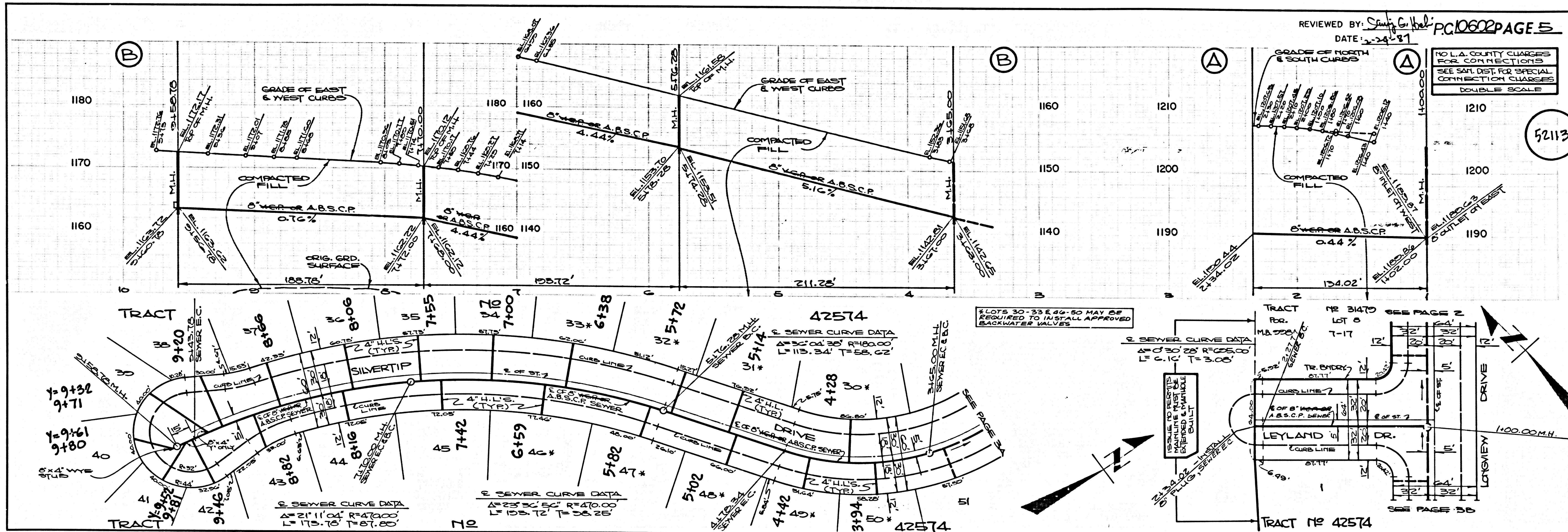


52111

52112

SO801 39

47525P 9M TRACT



3
S0301 39

AS254 IN TCAAT