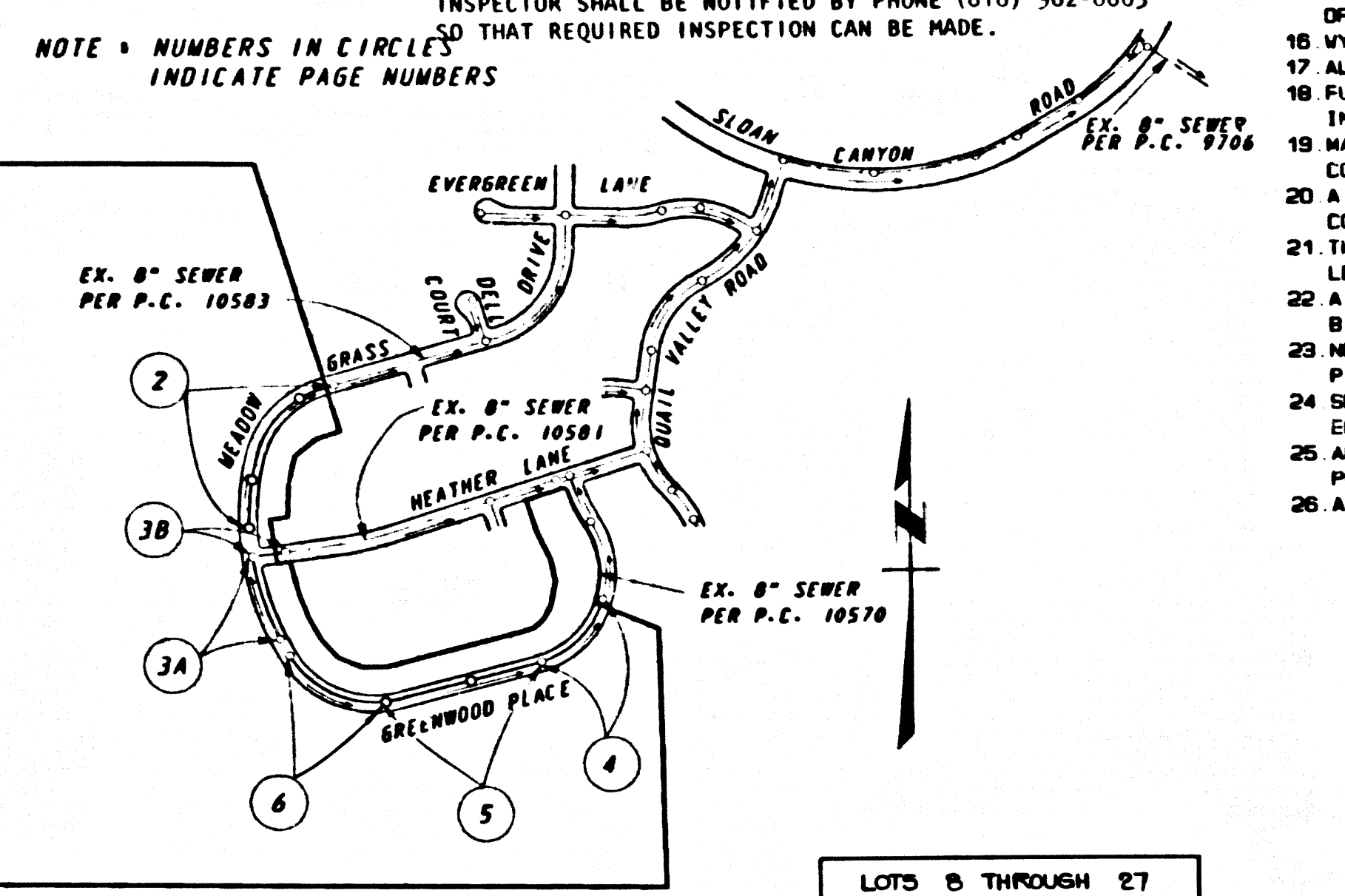


B.M. CL 3908 ELEV. 1184.662
 USE A 65 MM x 100 CORR BRIDGE # 8 1778 1771 W C/L
 PARTER RD & 2001 E GOLDEN STATE FREE ON-RAMP
 WSD (12/11/1971)

NEWHALL QUAD. 1983

NO CONNECTION FOR THE DISPOSAL OF INDUSTRIAL WASTES SHALL BE MADE TO SEWERS SHOWN ON THESE DRAWINGS UNTIL A PERMIT FOR INDUSTRIAL WASTEWATER DISCHARGE HAS BEEN ISSUED BY THE SANITATION DISTRICTS FOR SAID CONNECTION.

BEFORE BREAKING INTO OR CONSTRUCTION ON A COUNTY SANITATION DISTRICT SEWER AND PRIOR TO FINAL ACCEPTANCE OF THE PROJECT, SANITATION DISTRICT INSPECTOR SHALL BE NOTIFIED BY PHONE (818) 962-8605 THAT REQUIRED INSPECTION CAN BE MADE.



INDEX MAP
P.C. NO. 10606
TRACT NO. 42508
 SCALE: 1" = 400'

LOTS 8 THROUGH	27
28	49
29	50
30	72

MAY BE REQUIRED TO INSTALL BACKWATER VALVE

- DOUBLE SCALE**
- CONSTRUCTION NOTES: (CONT.)**
- ALL JOINTS BETWEEN CAST IRON PIPE AND VITRIFIED CLAY PIPE SHALL BE MADE WITH A RUBBER SLEEVE JOINT, TYPE "C" OR "D", (WITH BUSHING IF NECESSARY) PER STANDARD SPECIFICATIONS, SECTION 200-2.
 - SEWERS TO BE TESTED FOR LEAKAGE PER SECTION 308.1-4 OF THE STANDARD SPECIFICATIONS AND SPECIAL PROVISIONS.
 - RESURFACE ALL TRENCHES WITHIN PAVED AREAS TO MEET L.A. COUNTY PUBLIC WORKS OR CALIFORNIA STATE HIGHWAY REQUIREMENTS IN ACCORDANCE WITH PERMITS.
 - FULL COMPLIANCE WITH SECTION 200-1.3.4 OF THE STANDARD SPECIFICATIONS WILL BE REQUIRED FOR BACKFILL IN STREETS, CERTIFICATION OF BACKFILL COMPACTION AND SAND EQUIVALENTS BY A QUALIFIED, REGISTERED TESTING LABORATORY SHALL BE PROVIDED BY THE PERMITTEE PRIOR TO THE ISSUANCE OF A CERTIFICATE OF PARTIAL ACCEPTANCE.
 - SPECIAL BACKFILL IN EASEMENT CONSTRUCTION: (A) BACKFILL TRENCH AND REPLACE EARTH SO AS TO ACHIEVE THE NATURAL OR FINISHED GRADE AND SLOPES SHOWN ON THE GRADING PLAN APPROVED FOR THIS DEVELOPMENT BY THE LAND DEVELOPMENT DIVISION. (B) ALL BACKFILL AND EARTH REPLACED SHALL BE COMPACTED TO A MINIMUM OF 90% OF MAXIMUM DENSITY PER A.S.T.M. STD. METHOD OF TEST D998 (SPT AS MODIFIED). ACCEPTABLE CERTIFICATION OF SUCH COMPACTION SHALL BE SUBMITTED TO THE CONSTRUCTION DIVISION, DEPARTMENT OF PUBLIC WORKS.
 - VYE BRANCHES ONLY MAY BE USED FOR CONNECTIONS TO MAIN LINE SEWER IF A B B C P. IS USED.
 - ALL JOINTS BETWEEN CAST IRON PIPE AND A B B C P. SHALL BE MADE WITH APPROVED FITTINGS.
 - FULL COMPLIANCE WITH PART IV. OF THE SPECIAL PROVISIONS IS REQUIRED FOR THE INSTALLATION OF A B B COMPOSITE PIPE AND A B B SOLID WALL HOUSE LATERALS.
 - MANHOLE WATER STOP GASKETS AND CLAMPS ARE REQUIRED FOR THE CONNECTION OF A B B COMPOSITE PIPE TO MANHOLE STRUCTURES.
 - A B B SOLID WALL PIPE MUST BE USED FOR VYE AND HOUSE LATERAL CONNECTIONS TO A B B COMPOSITE MAINLINE SEWER PIPE.
 - THREE DEGREE DEFLECTION COUPLERS SHOULD BE USED TO ACCOMPLISH RADIUS OF CURVATURE LESS THAN 800'.
 - A B B COMPOSITE PIPE SHALL BE BEDDED IN CONFORMANCE WITH THE TABLE IN SECTION B-3.1 OF PART IV. OF SPECIAL PROVISIONS.
 - NO CONNECTIONS FOR DISPOSAL OF INDUSTRIAL WASTE IS ALLOWED IF A B B COMPOSITE PIPE IS USED.
 - SEWER LINE CURVATURE SHALL NOT BE ACHIEVED BY PULLING OF JOINTS OR BEVELING PIPE ENDS WHEN USING PLASTIC PIPE INCLUDING A B B COMPOSITE PIPE.
 - ALL VYES AND/OR HOUSE LATERALS ARE TO BE LOCATED AT LEAST FIVE FEET APART AND WHEN POSSIBLE NOT CLOSER THAN FIVE FEET TO ANY MANHOLE.
 - A B B SOLID WALL PIPE IS NOT ACCEPTABLE FOR USE AS MAINLINE SEWER.

ISSUE NO PERMIT UNTIL P.C. 10570, P.C. 10581, AND P.C. 10583 HAVE BEEN ACCEPTED FOR PUBLIC USE BY COUNTY OF LOS ANGELES

ISSUE H.L. PERMIT FOR LOT 45 FROM P.C. 10583 AND LOTS 1 THROUGH 7 FROM P.C. 10570

- GENERAL NOTES:**
- ELEVATIONS ARE IN FEET ABOVE U.S.C. & G.S. SEA LEVEL DATUM OF 1929.
 - NO REVISIONS SHALL BE MADE IN THESE PLANS WITHOUT THE APPROVAL OF THE DIRECTOR OF PUBLIC WORKS.
 - NO REPRESENTATIVE OF THE DEPARTMENT OF PUBLIC WORKS WILL SURVEY OR LAY OUT ANY PORTION OF THE WORK.
 - GRADES TO WHICH THIS IMPROVEMENT IS TO BE CONSTRUCTED ARE SHOWN ON PLANS AND PROFILES. GRADE POINTS FOR TOP OF CURBS, CENTER LINE OF STREETS, OR CENTER LINE OF ALLEYS ARE SHOWN BY CIRCLES ON PROFILES. AT ALL POINTS BETWEEN DESIGNATED POINTS THE GRADE SHALL BE ESTABLISHED SO AS TO CONFORM TO A STRAIGHT LINE DRAWN BETWEEN SAID DESIGNATED POINTS.
 - THE PRIVATE ENGINEER SHALL FURNISH THE DEPARTMENT OF PUBLIC WORKS WITH GRADE SHEETS AND STATIONING FOR ALL HOUSE LATERALS AND "T" OR "Y" BRANCHES AND SHALL PROVIDE STAKES FOR THEM AT THEIR PROPER LOCATIONS WITH STATIONING PLAINLY MARKED. ALL HOUSE LATERALS SHALL BE CONSTRUCTED IN A STRAIGHT ALIGNMENT AT RIGHT ANGLES FROM THE MAIN LINE SEWER EXCEPT AS SHOWN ON THE PLANS. HOUSE LATERALS FROM CHIMNEYS SHALL NOT HAVE AN ANGLE OF LESS THAN 45 DEGREES WITH THE MAIN LINE SEWER. ANY CHANGE IN ALIGNMENT SHALL BE REQUESTED IN WRITING BY THE PRIVATE ENGINEER.
 - THE PRIVATE ENGINEER SHALL FURNISH THE HOUSE LATERAL DEPTH AT THE PROPERTY LINE BELOW THE TOP OF THE CURB ELEVATION FOR EACH HOUSE LATERAL ON THE GRADE SHEET.
 - BEFORE WORK CAN BE STARTED, THE CONTRACTOR MUST OBTAIN A PERMIT TO EXCAVATE IN COUNTY STREETS FROM THE L.A. COUNTY DIV. ELEMENT OF THE DEPARTMENT OF PUBLIC WORKS, DISTRICT OFFICE NO. 8, AND PAY A FEE TO THE DIRECTOR OF PUBLIC WORKS, 2250 ALCAZAR STREET, LOS ANGELES, CA. 90033, TO COVER THE COST OF CONSTRUCTION INSPECTION AND RECORD PLANS.
 - IF WORK IS TO BE DONE IN STATE HIGHWAY, A PERMIT MUST BE OBTAINED FROM THE STATE OF CALIFORNIA, DIVISION OF HIGHWAYS, 100 SOUTH SPRING STREET, LOS ANGELES, CALIFORNIA.
 - APPROVAL OF THIS PLAN BY THE COUNTY OF LOS ANGELES DOES NOT CONSTITUTE A REPRESENTATION AS TO THE ACCURACY OF THE LOCATION OF OR THE EXISTENCE OR NON-EXISTENCE OF ANY UNDERGROUND UTILITY PIPE, OR STRUCTURE WITHIN THE LIMITS OF THIS PROJECT. THIS NOTE APPLIES TO ALL PAGES.
 - REFER TO SECTION 7. TO 4.1 OF THE STANDARD SPECIFICATIONS, REGARDING SAFETY ORDERS.
 - PRIOR TO THE ISSUANCE OF THE REQUIRED SEWER CONSTRUCTION PERMIT, THE CONTRACTOR SHALL OBTAIN AND FILE WITH THE DEPARTMENT OF PUBLIC WORKS COPIES OF A PERMIT TO EXCAVATE IN COUNTY STREETS FROM THE LOS ANGELES COUNTY CONST. DIV. OF THE DEPARTMENT OF PUBLIC WORKS. A PERMIT FOR EXCAVATIONS AND TRENCHES FROM THE STATE OF CALIFORNIA, DIVISION OF INDUSTRIAL SAFETY AND A CERTIFICATE OF WORKER'S COMPENSATION INSURANCE WITH THE DEPARTMENT OF PUBLIC WORKS, 2050 ALCAZAR STREET, 9TH FLOOR, LOS ANGELES, CALIFORNIA, 90033, NAMED AS THE CERTIFICATE HOLDER TO BE NOTIFIED 30 DAYS PRIOR TO CANCELLATION OF POLICY.

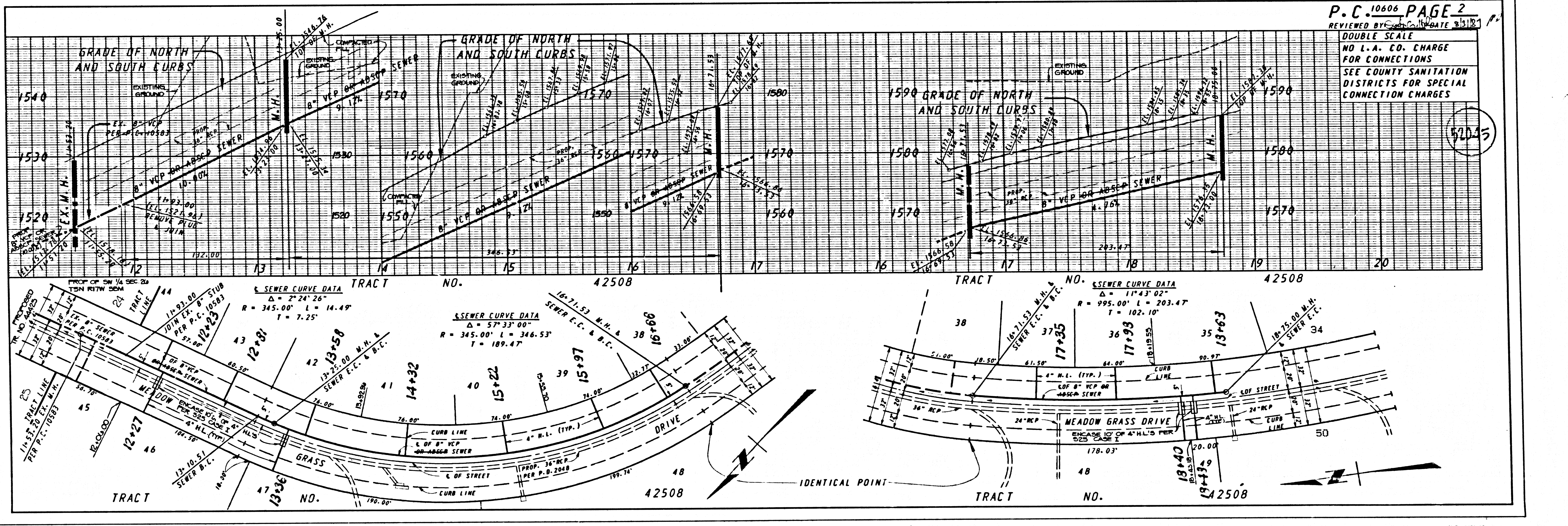
- CONSTRUCTION NOTES:**
- WORK SHALL BE CONSTRUCTED ACCORDING TO THE STANDARD SPECIFICATIONS FOR PUBLIC WORKS CONSTRUCTION (1988 EDITION WITH 1989 SUPPLEMENTS) & DEPARTMENT OF PUBLIC WORKS SPECIAL PROVISIONS FOR THE CONSTRUCTION OF SANITARY SEWERS DATED SEPT. 21, 1978 AND SHALL BE PROSECUTED ONLY IN THE PRESENCE OF THE DEPARTMENT OF PUBLIC WORKS.
 - THE CONTRACTOR SHALL NOTIFY THE CONSTRUCTION DIVISION BY TELEPHONE, 226-8281, AT LEAST TWENTY-FOUR HOURS BEFORE STARTING ANY WORK UNDER THIS CONTRACT.
 - HOUSE LATERALS TO BE CONSTRUCTED WITH INVERTS AT PROPERTY LINE 6 FEET BELOW CURB GRADE EXCEPT AS NOTED.
 - VYE OR TEE BRANCHES MAY BE USED FOR CONNECTIONS TO MAINLINE SEWERS EXCEPT AS NOTED.
 - ALL STRUCTURES SHALL BE EITHER BRICK MANHOLES PER S-3 OR PRECAST CONCRETE MANHOLES AS PER S-36, EXCEPT AS NOTED.
 - PROVIDE STAKES ON THE PROPERTY LINE OR PROPERTY LINES PRODUCED AT RIGHT ANGLES TO THE SEWER LINE AT THE CENTER LINE OF EACH MANHOLE.
 - MANHOLE TOPS IN UNIMPROVED RIGHTS OF WAY TO BE SIX INCHES ABOVE FINISHED GRADE.
 - VITRIFIED CLAY PIPE JOINTS SHALL BE TYPE "D" OR "G" PER STANDARD SPECIFICATIONS SECTION 200-2.
 - IF A POWER POLE IS WITHIN THREE FEET OF THE SEWER, THE SEWER SHALL BE ENCASED, PER S-23, CASE 11, TWO FEET ON EACH SIDE FROM THE POINT OF INTERFERENCE.
 - IF DURING THE COURSE OF CONSTRUCTION IT IS DETERMINED THAT THERE IS LESS THAN FOUR FEET OF COVER OVER THE TOP OF A MAIN LINE OR HOUSE LATERAL SEWER WHICH IS NOT INDICATED ON THE PLANS, THE PIPE SHALL BE ENCASED PER S-23, CASE 11 UNLESS OTHERWISE APPROVED BY THE DIRECTOR OF PUBLIC WORKS.

PROFILE, ALIGNMENT AND GRADE OF PAGE 1
SANITARY SEWERS
 TO BE CONSTRUCTED IN
TRACT NO. 42508
PRIVATE CONTRACT NO. 10606
 INDEX: 517-17
 3 SHEETS: 6 PAGES (52044)
 SCALE: VERT. 1" = 8' HORIZ. 1" = 40'
 OCTOBER 1, 1986
 PREPARED IN THE OFFICES OF
ENGINEERING SERVICE CORPORATION
 4017 BRISTOL PARKWAY - FOX HILLS BUSINESS PARK
 CULVER CITY, CALIF. 90230 - TELEPHONE: (213) 341-7999
 BY: *J. K. [Signature]*
 REG. C. E. NO. 13095

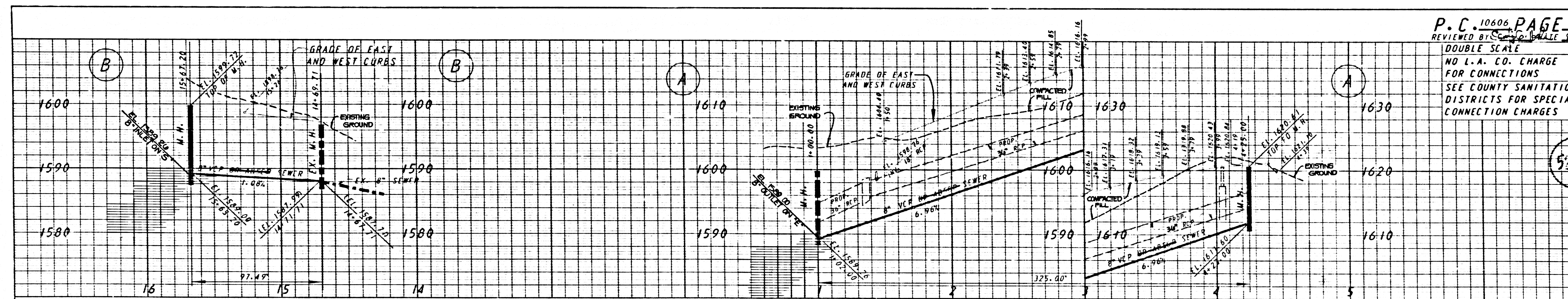
THE FOLLOWING LATEST REVISED STANDARD PLANS ON FILE IN THE OFFICE OF THE COUNTY DEPARTMENT OF PUBLIC WORKS SHALL APPLY IN THE CONSTRUCTION OF THIS PROJECT:

LEGEND	S-4
WITHIN PUBLIC SAFETY REQUIREMENTS	S-4
BRICK MANHOLE	S-2
STANDARD MANHOLE STEP	S-3
BEDDING FOR SEWER PIPE	S-24
CRADLING AND EASEMENT	S-23
VYE OR TEE SUPPORT	S-36
ALLOWABLE TRENCH WIDTHS	S-32
LOCKING MANHOLE FRAME AND COVER	S-35
NON-REINFORCED PRECAST CONCRETE MANHOLE	S-38
SPECIAL HOUSE LATERALS	S-25

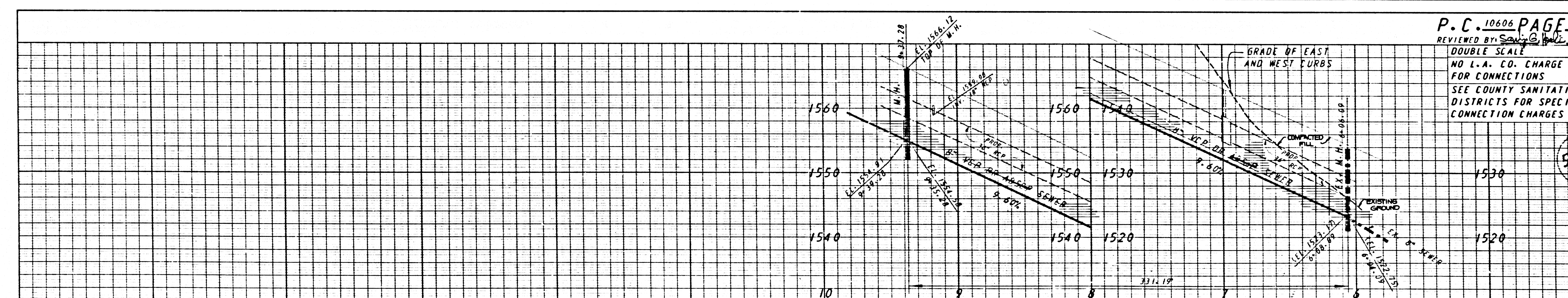
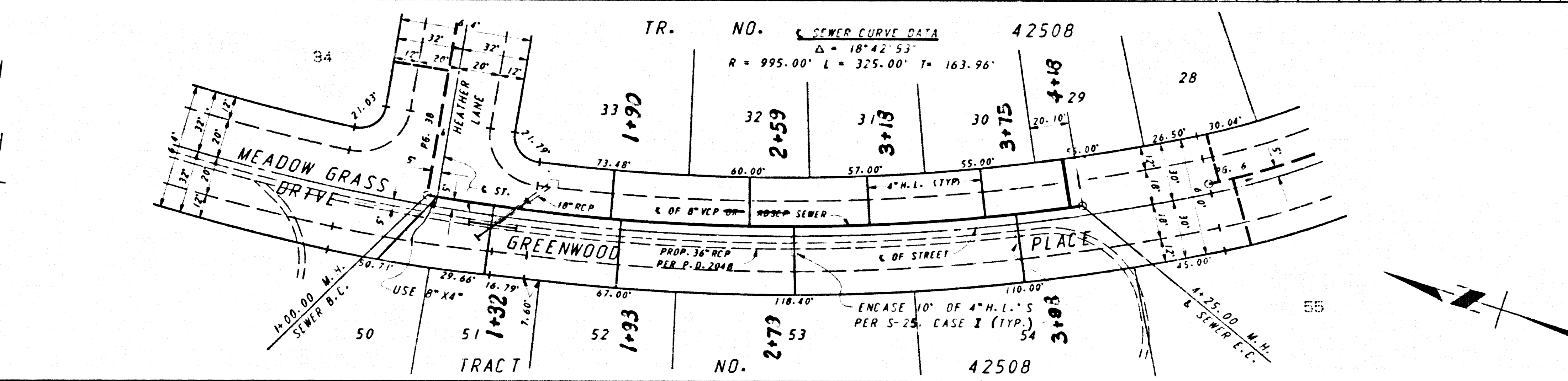
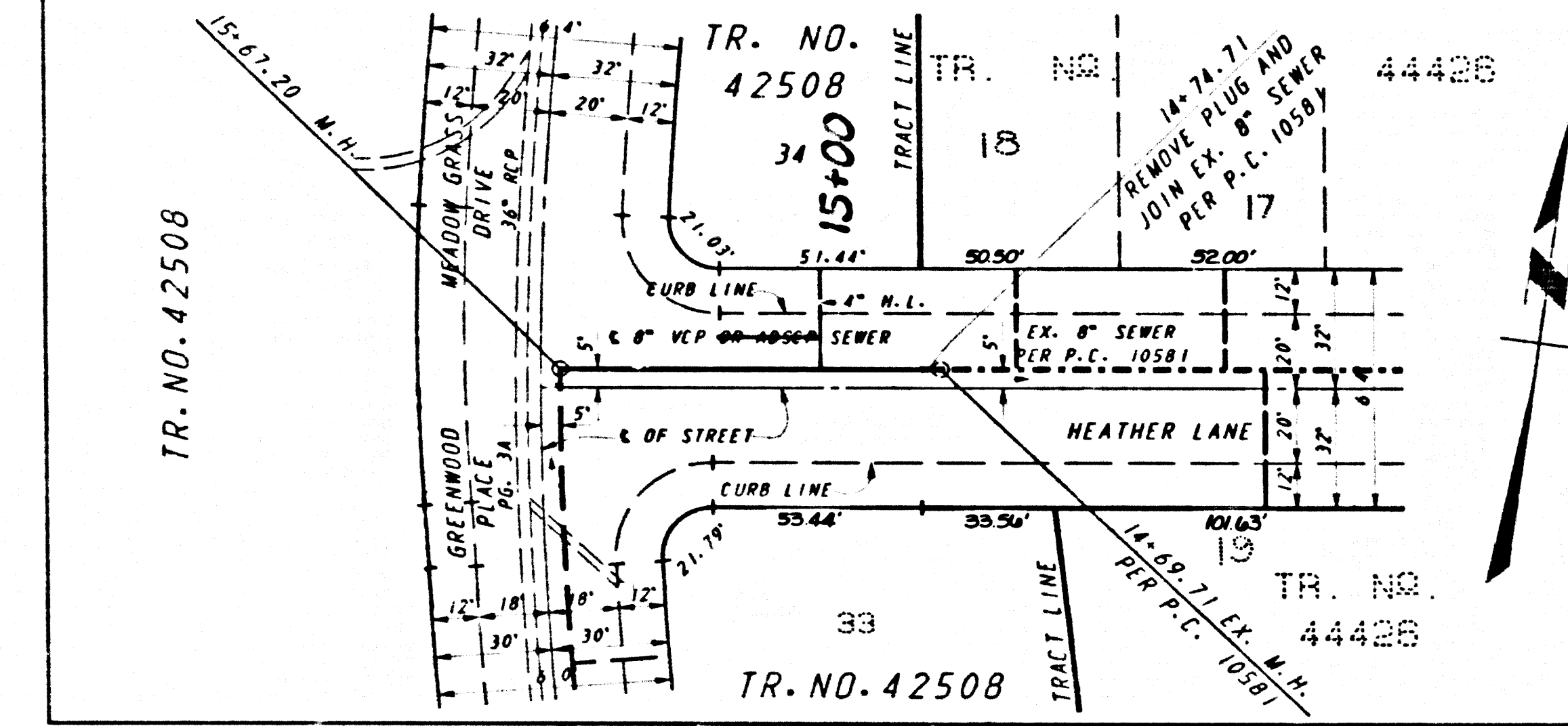
COUNTY OF LOS ANGELES, CALIFORNIA
 THOMAS A. HEDMANSON, DIRECTOR OF PUBLIC WORKS
 CHARLES W. CARRY, CHIEF ENGINEER
 APPROVED: *Carl [Signature]* 9/21/87 APPROVED: *[Signature]* 9/25/87
 DATE: 9/18/87
 CHECKED: *[Signature]* 9/18/87
 REG. C. E. NO. 16881
 SANTA CLARITA VALLEY BLDG. DIST. B-2



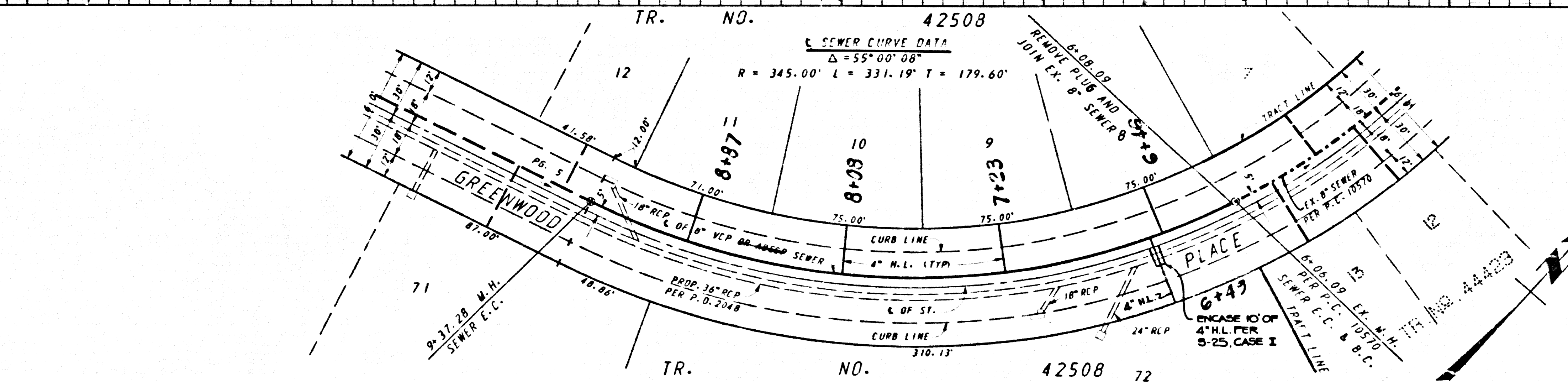
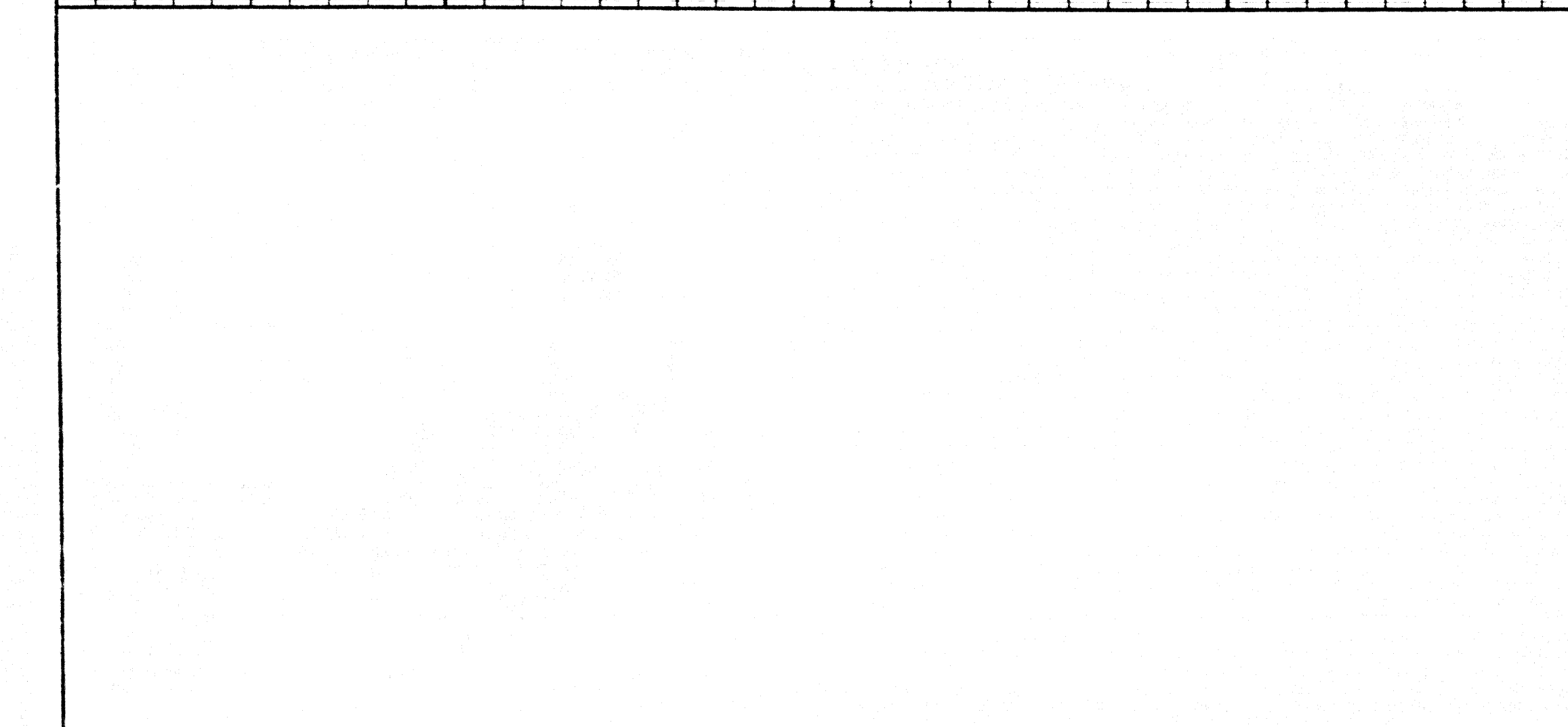
P.C. 10606 PAGE 2
 REVIEWED BY: *[Signature]* DATE: 9/18/87
DOUBLE SCALE
 NO L.A. CO. CHARGE FOR CONNECTIONS
 SEE COUNTY SANITATION DISTRICTS FOR SPECIAL CONNECTION CHARGES



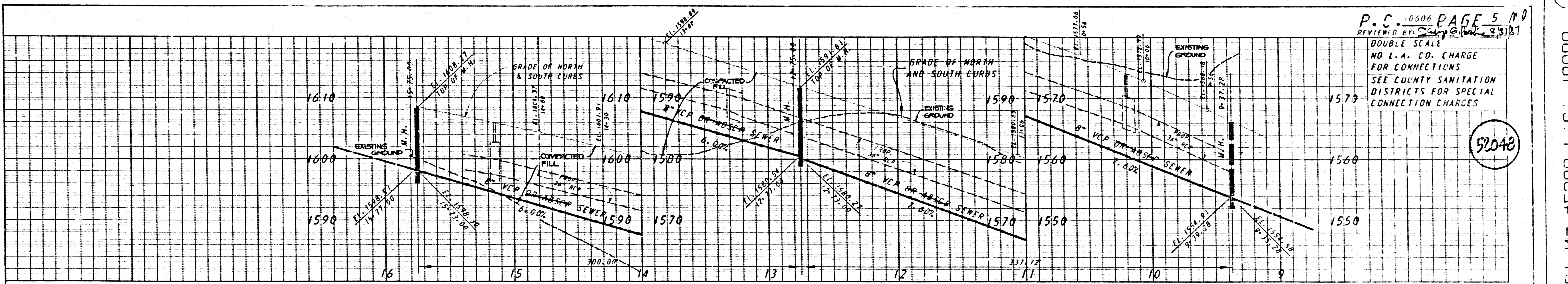
P.C. 10606 PAGE 3 #10
 REVIEWED BY: [Signature]
 DOUBLE SCALE
 NO L.A. CO. CHARGE
 FOR CONNECTIONS
 SEE COUNTY SANITATION
 DISTRICTS FOR SPECIAL
 CONNECTION CHARGES



P.C. 10606 PAGE 4 #10
 REVIEWED BY: [Signature]
 DOUBLE SCALE
 NO L.A. CO. CHARGE
 FOR CONNECTIONS
 SEE COUNTY SANITATION
 DISTRICTS FOR SPECIAL
 CONNECTION CHARGES

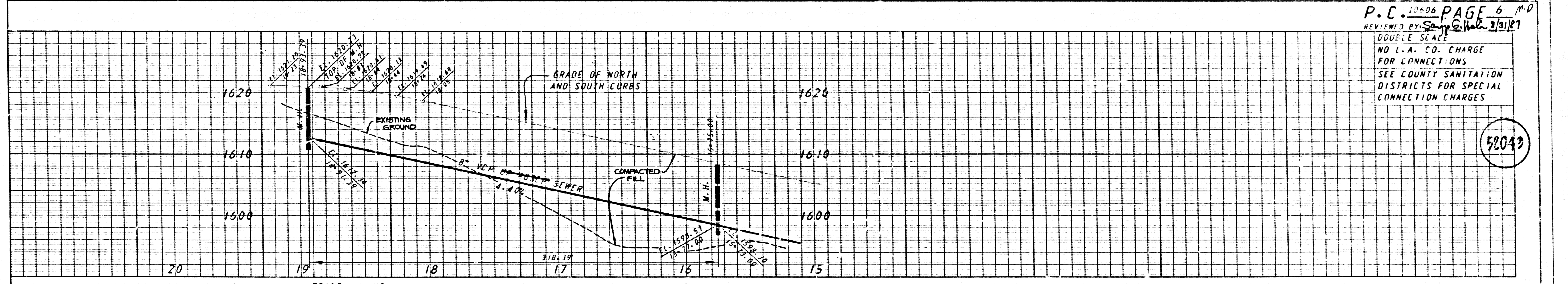
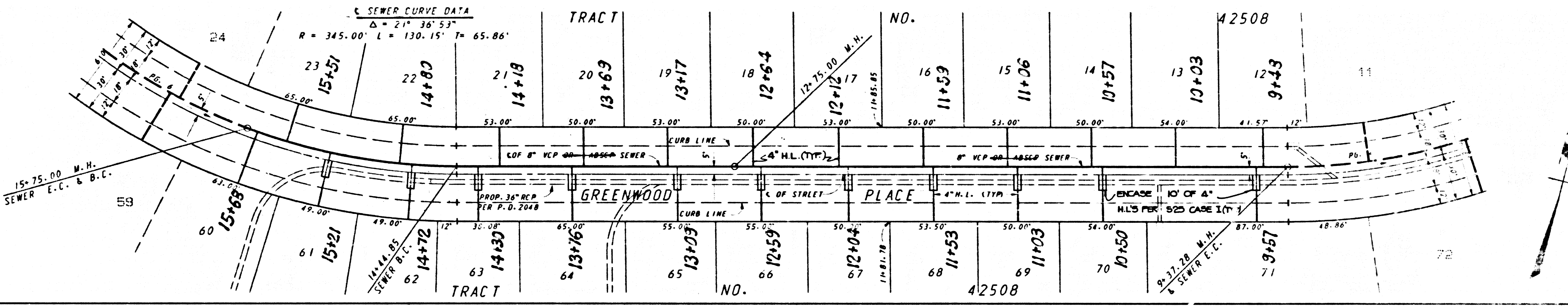


5 80801 C. P. 80254 DM TCAAT



P.C. 10306 PAGE 5 M.D.
 REVIEWED BY: [Signature] 3/13/17
 DOUBLE SCALE
 NO L.A. CO. CHARGE FOR CONNECTIONS
 SEE COUNTY SANITATION DISTRICTS FOR SPECIAL CONNECTION CHARGES

52048



P.C. 10306 PAGE 6 M.D.
 REVIEWED BY: [Signature] 3/13/17
 DOUBLE SCALE
 NO L.A. CO. CHARGE FOR CONNECTIONS
 SEE COUNTY SANITATION DISTRICTS FOR SPECIAL CONNECTION CHARGES

52049

