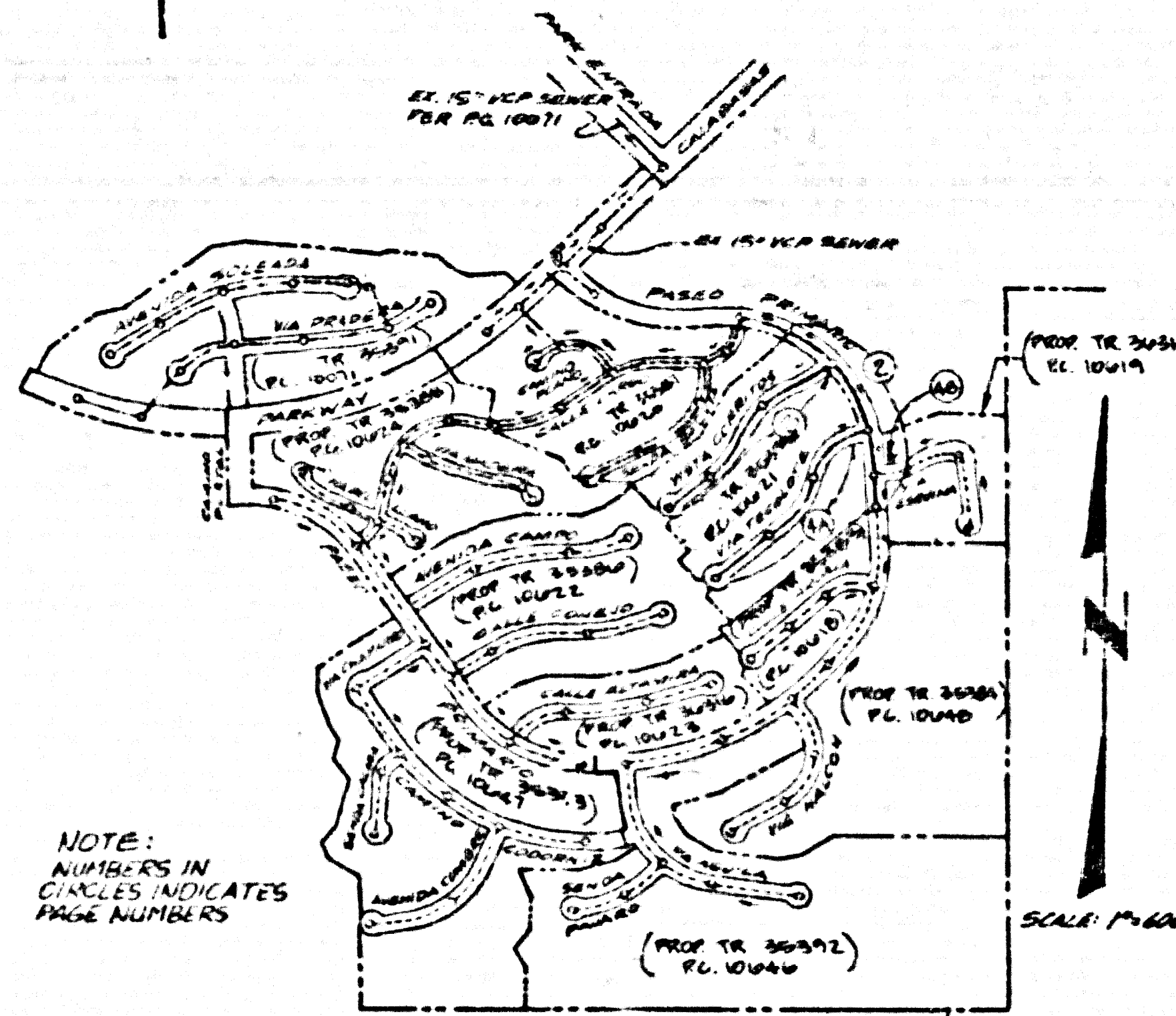


B.M. C.T. 9040 ELEV. 1005.971
 P.O.B.M. TAG IN CR 3" S. BOX
 55' S. & 44' W. C.T. 181
 CALABAS RD. & P.M.T. CALABAS
 MALIBU QUAD. 19 80



INDEX MAP
 TRACT NO. 35385
 PC 10621

PRIVATE ENGINEER'S NOTICE TO CONTRACTORS
 The existence and location of any underground utility pipes or structures shown on these plans are obtained by a search of the available records. To the best of our knowledge there are no existing utilities except as shown on these plans. The contractor is required to take due precautions to measure to protect the utility lines shown and any other lines not of record or not shown on these plans. The contractor shall be responsible for notifying "UNDERGROUND SERVICE ALERT" at 1-800-422-4153 five working days prior to any excavation or construction.

Robert Kallenberg
 Registered Engineer R.C.E. No. 47267

CONSTRUCTION NOTES CONT'D.

16. FULL COMPLIANCE WITH PART 7 OF THE SPECIAL PROVISIONS IS REQUIRED FOR THE INSTALLATION OF A-B-S. COMPOSITE PIPE.
17. WHOLE WATER STOP GASKETS AND CLAMPS ARE REQUIRED FOR THE CONNECTION OF A-B-S. COMPOSITE PIPE TO RIGIBLE STRUCTURES.
18. A-B-S. SOLID WALL PIPE MUST BE USED FOR VYE AND HOUSE LATERAL CONNECTIONS TO A-B-S. COMPOSITE MAINLINE SEWER PIPE.
19. A-B-S. COMPOSITE PIPE SHALL BE INSTALLED IN CONFORMANCE WITH THE TABLE IN SECTION D-3.1. OF PART IV OF THE SPECIAL PROVISIONS.
20. THREE DEGREE DEFLECTING COMPLIANCE ARE REQUIRED FOR RADIUS OF CURVATURE LESS THAN 300 FEET WHEN USING 6" A-B-S. COMPOSITE PIPE.
21. NO CONNECTION FOR DISPOSAL OF INDUSTRIAL WASTE IS ALLOWED IF A-B-S. COMPOSITE PIPE IS USED.
22. SEWER LINE CURVATURE SHALL NOT BE ACHIEVED BY PULLING OF JOISTS OR BELTING PIPE ENDS WHEN LAYING PLASTIC PIPE INCLUDING A-B-S. COMPOSITE PIPE.
23. ALL VYES AND/OR HOUSE LATERALS ARE TO BE LOCATED AT LEAST FIVE FEET APART & WHEN POSSIBLE NOT CLOSER THAN FIVE FEET TO ANY MANHOLE.
24. A-B-S. SOLID WALL PIPE IS NOT ACCEPTABLE FOR USE AS MAINLINE SEWER.
25. ONLY VYE BRANCHES ARE TO BE USED FOR CONNECTION TO A-B-S. COMPOSITE MAINLINE SEWER PIPE.
26. TESTING PER LAB VINEBORG MUNICIPAL WATER DISTRICT
 - A. IMPERMEABLE LEAKAGE TESTS: METHOD WHEN FOR TESTING WILL BE THE SAME AS L.A. COUNTY EXCEPT THE FLOW TO BE USED IS AS FOLLOWS:

MAIN PIPE DIAMETER	MINIMUM TIME LOSS
12" - 14"	1 MINUTE
16" - 18"	2 MINUTES
20" - 24"	3 MINUTES
24" - 30"	4 MINUTES
36" - 42"	5 MINUTES
48" - 54"	6 MINUTES
60" - 72"	8 MINUTES
72" - 84"	10 MINUTES
90" - 108"	12 MINUTES
120" - 144"	15 MINUTES
 - B. MANHOLE LEAKAGE TESTS: AT THE DISCRETION OF THE DISTRICT'S REPRESENTATIVE, ONE MANHOLE OUT OF EVERY TEN MANHOLES AND A MINIMUM OF TWO WILL BE FILLED WITH WATER & AFTER THREE HOURS WILL BE CHECKED FOR LEAKAGE WITH NO DROP IN LEVEL. FOR EVERY ONE MANHOLE NOT FURNISHING LEAKAGE, FIVE MORE WILL BE TESTED AT THE DISCRETION OF THE DISTRICT'S REPRESENTATIVE.
 - C. AIR TESTING: WHEN THE DIFFERENCE IN ELEVATION BETWEEN THE LEVEL OF THE UPPER STRUCTURE & THE LEVEL OF THE LOWER STRUCTURE IS MORE THAN 115 FEET, AIR TEST WILL BE MADE. THE TIME TAKEN TO LOSE ONE (1) POUND PER SQUARE FOOT SQUARE PRESSURE FROM THREE (3) POUNDS PER SQUARE FOOT SQUARE PRESSURE TO THE (2) POUNDS PER SQUARE FOOT SQUARE PRESSURE SHALL NOT BE LESS THAN THREE (3) HOURS ON THE FOLLOWING TABLE:

MAIN PIPE DIAMETER	MINIMUM TIME LOSS
12" - 14"	1 HOUR
16" - 18"	2 HOURS
20" - 24"	3 HOURS
24" - 30"	4 HOURS
36" - 42"	5 HOURS
48" - 54"	6 HOURS
60" - 72"	8 HOURS
72" - 84"	10 HOURS
90" - 108"	12 HOURS
120" - 144"	15 HOURS

IF THE TIME IS LESS THAN LISTED IN THE TABLE ABOVE, THE CONTRACTOR SHALL MAKE SUCH REPAIRS AS ARE NECESSARY TO ELIMINATE THE EXCESSIVE LEAKAGE.

15' HOUSE LATERAL PERMITS UNTIL COUNTY SEWERS PER PC 10071 & PC 10070 ARE ACCEPTED BY L.A. COUNTY FOR PUBLIC USE.

GENERAL NOTES:

1. REFER TO THE SPECIAL PROVISIONS OF THE STANDARD SPECIFICATIONS FOR PUBLIC WORKS CONSTRUCTION.
2. NO WORK SHALL BE DONE IN THESE AREAS WITHOUT THE APPROVAL OF THE COUNTY PUBLIC WORKS DEPARTMENT.
3. NO WORK SHALL BE DONE IN THESE AREAS WITHOUT THE APPROVAL OF THE COUNTY PUBLIC WORKS DEPARTMENT.
4. BRIDGES TO BE CONSTRUCTED IN THESE AREAS SHALL BE CONSTRUCTED IN ACCORDANCE WITH THE STANDARD SPECIFICATIONS FOR PUBLIC WORKS CONSTRUCTION.
5. THE PRIVATE ENGINEER SHALL FURNISH THE HOUSE LATERAL DEPTH TO THE PROPERTY LINE BELOW THE TOP OF CURB ELEVATION FOR EACH HOUSE LATERAL ON THE GRADE SHEET.
6. BEFORE WORK CAN BE STARTED THE CONTRACTOR MUST OBTAIN A PERMIT TO EXCAVATE IN COUNTY STREETS FROM THE COUNTY DEPT. OF PUBLIC WORKS. THE PERMIT MUST BE OBTAINED BEFORE ANY WORK IS STARTED IN THE STREETS. THE PERMIT MUST BE OBTAINED BEFORE ANY WORK IS STARTED IN THE STREETS.
7. APPROVAL OF THIS PLAN BY THE COUNTY OF LOS ANGELES DOES NOT CONSTITUTE A REPRESENTATION AS TO THE ACCURACY OF THE LOCATION OF OR THE EXISTENCE OR NON-EXISTENCE OF ANY UNDERGROUND UTILITY PIPE OR STRUCTURE WITHIN THE LIMITS OF THIS PROJECT. THIS NOTE APPLIES TO ALL PAGES.
8. REFER TO SECTION 704.1 OF THE STANDARD SPECIFICATIONS REGARDING SAFETY CONES.
9. FROM THE INSTANT OF THE RECEIVED PERMIT TO EXCAVATE IN COUNTY STREETS FROM THE COUNTY DEPT. OF PUBLIC WORKS THE CONTRACTOR SHALL BE RESPONSIBLE FOR THE PROTECTION OF ALL UTILITIES AND STRUCTURES IN THE STREETS. THE CONTRACTOR SHALL BE RESPONSIBLE FOR THE PROTECTION OF ALL UTILITIES AND STRUCTURES IN THE STREETS.
10. ALL UTILITIES AND STRUCTURES IN THE STREETS SHALL BE PROTECTED BY THE CONTRACTOR. THE CONTRACTOR SHALL BE RESPONSIBLE FOR THE PROTECTION OF ALL UTILITIES AND STRUCTURES IN THE STREETS.
11. ALL UTILITIES AND STRUCTURES IN THE STREETS SHALL BE PROTECTED BY THE CONTRACTOR. THE CONTRACTOR SHALL BE RESPONSIBLE FOR THE PROTECTION OF ALL UTILITIES AND STRUCTURES IN THE STREETS.
12. ALL UTILITIES AND STRUCTURES IN THE STREETS SHALL BE PROTECTED BY THE CONTRACTOR. THE CONTRACTOR SHALL BE RESPONSIBLE FOR THE PROTECTION OF ALL UTILITIES AND STRUCTURES IN THE STREETS.
13. ALL UTILITIES AND STRUCTURES IN THE STREETS SHALL BE PROTECTED BY THE CONTRACTOR. THE CONTRACTOR SHALL BE RESPONSIBLE FOR THE PROTECTION OF ALL UTILITIES AND STRUCTURES IN THE STREETS.
14. ALL UTILITIES AND STRUCTURES IN THE STREETS SHALL BE PROTECTED BY THE CONTRACTOR. THE CONTRACTOR SHALL BE RESPONSIBLE FOR THE PROTECTION OF ALL UTILITIES AND STRUCTURES IN THE STREETS.
15. ALL UTILITIES AND STRUCTURES IN THE STREETS SHALL BE PROTECTED BY THE CONTRACTOR. THE CONTRACTOR SHALL BE RESPONSIBLE FOR THE PROTECTION OF ALL UTILITIES AND STRUCTURES IN THE STREETS.

CONSTRUCTION NOTES:

1. WORK SHALL BE CONSTRUCTED ACCORDING TO THE STANDARD SPECIFICATIONS FOR PUBLIC WORKS CONSTRUCTION.
2. THE CONTRACTOR SHALL BE RESPONSIBLE FOR THE PROTECTION OF ALL UTILITIES AND STRUCTURES IN THE STREETS.
3. HOUSE LATERALS TO BE CONSTRUCTED WITHIN THE PROPERTY LINE SHALL BE INSTALLED AT LEAST 18" BELOW CURB GRADE EXCEPT AS NOTED.
4. ALL STRUCTURES SHALL BE CONSTRUCTED WITHIN THE PROPERTY LINE SHALL BE INSTALLED AT LEAST 18" BELOW CURB GRADE EXCEPT AS NOTED.
5. PROVIDE STAKES ON THE PROPERTY LINE OR PROPERTY LINES INDICATED AT RIGHT ANGLES TO THE SEWER LINE AT THE CENTER LINE OF EACH MANHOLE.
6. MANHOLE TOPS IN UNIMPAVED AREAS OF WAY TO BE 30" MINIMUM ABOVE FINISHED GRADE.
7. RIGID CLAY PIPE JOINTS SHALL BE TYPE "D" OR "E" PER STANDARD SPECIFICATIONS SECTION 802.
8. IF A POWER POLE IS WITHIN THREE FEET OF THE SEWER THE SEWER SHALL BE ENCASED PER CASE 2 CASE 2 TWO FEET ON EACH SIDE FROM THE POINT OF INTERFERENCE.
9. DURING THE COURSE OF CONSTRUCTION IT IS TO BE REMEMBERED THAT THERE SHALL BE FOUR FEET OF COVER OVER THE TOP OF A MAIN LINE OR HOUSE LATERAL SEWER WHICH IS NOT INDICATED ON THE PLANS. THE PIPE SHALL BE ENCASED PER CASE 2 UNLESS OTHERWISE APPROVED BY THE DISTRICT'S REPRESENTATIVE.
10. ALL JOINTS BETWEEN CAST IRON PIPE AND RIGID CLAY PIPE SHALL BE MADE WITH A RUBBER BELLOW JOINT TYPE "C" OR "D" PER STANDARD SPECIFICATIONS SECTION 802. THE JOINT SHALL BE MADE WITH APPROVED RIFTS AND SHALL BE MADE IN ACCORDANCE WITH THE STANDARD SPECIFICATIONS SECTION 802.
11. REINFORCE ALL TRENCHES WITHIN THE AREAS TO BE EXCAVATED IN COUNTY PUBLIC WORKS CALIFORNIA STATE HIGHWAY REQUIREMENTS IN ACCORDANCE WITH PART 7 OF THE SPECIAL PROVISIONS.
12. FULL COMPLIANCE WITH SECTION 704.1 OF THE STANDARD SPECIFICATIONS SHALL BE REQUIRED FOR BACKFILL IN STREETS REQUIRING BACKFILL COMPACTOR AND SAND EQUIVALENTS BY A QUALIFIED PERSON USING TESTING LABORATORY SHALL BE PROVIDED BY THE PERMITTEE PRIOR TO THE BEGAINING OF A CERTIFICATE OF PARTIAL ACCEPTANCE.
13. SPECIAL BACKFILL IN EXISTING CONSTRUCTION AT MANHOLES, TRENCHES AND REPLACE OTHER EARTH SO AS TO ACHIEVE THE NATURAL OR FINISHED GRADES AND SLOPES SHOWN ON THE GRADING PLAN APPROVED FOR THIS DEVELOPMENT BY THE LAND DEVELOPER. DIVISION SHALL BACKFILL AND PARTIAL ACCEPTANCE SHALL BE OBTAINED FROM THE DISTRICT'S REPRESENTATIVE PRIOR TO THE BEGAINING OF A CERTIFICATE OF PARTIAL ACCEPTANCE.
14. SPECIAL BACKFILL IN EXISTING CONSTRUCTION AT MANHOLES, TRENCHES AND REPLACE OTHER EARTH SO AS TO ACHIEVE THE NATURAL OR FINISHED GRADES AND SLOPES SHOWN ON THE GRADING PLAN APPROVED FOR THIS DEVELOPMENT BY THE LAND DEVELOPER. DIVISION SHALL BACKFILL AND PARTIAL ACCEPTANCE SHALL BE OBTAINED FROM THE DISTRICT'S REPRESENTATIVE PRIOR TO THE BEGAINING OF A CERTIFICATE OF PARTIAL ACCEPTANCE.

DOUBLE SCALE

PROFILE, ALIGNMENT AND GRADE OF **PAGE 1**

SANITARY SEWERS
 TO BE CONSTRUCTED IN
TRACT NO. 35385
PRIVATE CONTRACT NO. 10621
INDEX C-232

2 SHEETS, 4 PAGES

92278

OCTOBER, 1987
 PREPARED IN THE OFFICES OF
Robert Kallenberg & Associates
 PROFESSIONAL ENGINEERS, PLANNERS & ARCHITECTS
 60 ROBERT KALLENBERG ROAD, MALIBU, CALIFORNIA 90263
 310-336-1111

THE FOLLOWING LATEST REVISED STANDARD PLANS ON FILE IN THE DEPT. OF PUBLIC WORKS SHALL APPLY IN THE CONSTRUCTION OF THIS PROJECT:

SEWER	61
SEWER PUBLIC SAFETY ENCLOSURES	62
SEWER MANHOLE	63
SEWER MANHOLE	64
SEWER MANHOLE	65
SEWER MANHOLE	66
SEWER MANHOLE	67
SEWER MANHOLE	68
SEWER MANHOLE	69
SEWER MANHOLE	70
SEWER MANHOLE	71
SEWER MANHOLE	72
SEWER MANHOLE	73
SEWER MANHOLE	74
SEWER MANHOLE	75
SEWER MANHOLE	76
SEWER MANHOLE	77
SEWER MANHOLE	78
SEWER MANHOLE	79
SEWER MANHOLE	80
SEWER MANHOLE	81
SEWER MANHOLE	82
SEWER MANHOLE	83
SEWER MANHOLE	84
SEWER MANHOLE	85
SEWER MANHOLE	86
SEWER MANHOLE	87
SEWER MANHOLE	88
SEWER MANHOLE	89
SEWER MANHOLE	90
SEWER MANHOLE	91
SEWER MANHOLE	92
SEWER MANHOLE	93
SEWER MANHOLE	94
SEWER MANHOLE	95
SEWER MANHOLE	96
SEWER MANHOLE	97
SEWER MANHOLE	98
SEWER MANHOLE	99
SEWER MANHOLE	100

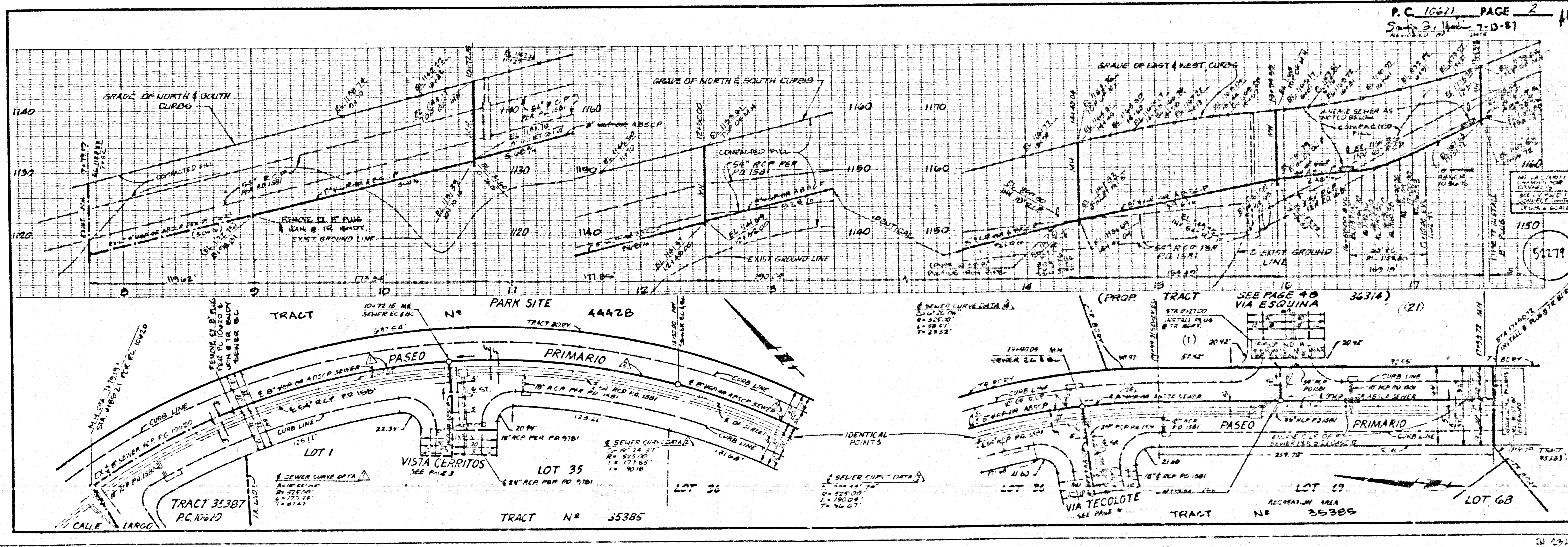
COUNTY OF LOS ANGELES, CALIFORNIA
 THOMAS A. TIDEFORS, DIRECTOR, LAB VINEBORG MUNICIPAL WATER DISTRICT
 DEPARTMENT OF PUBLIC WORKS

APPROVED *Thomas A. Tidefors* 7-13-87
 DATE

APPROVED *H.V. Stoker* 7-13-87
 DATE

CHECKED *Robert Kallenberg* 7-13-87
 DATE

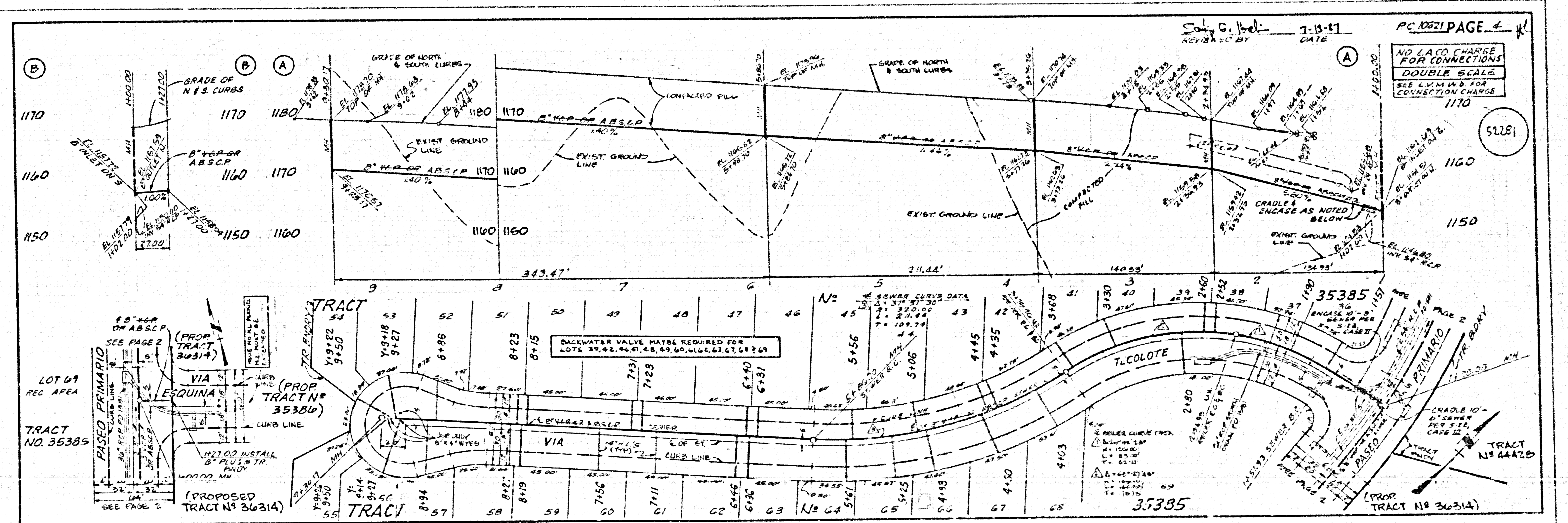
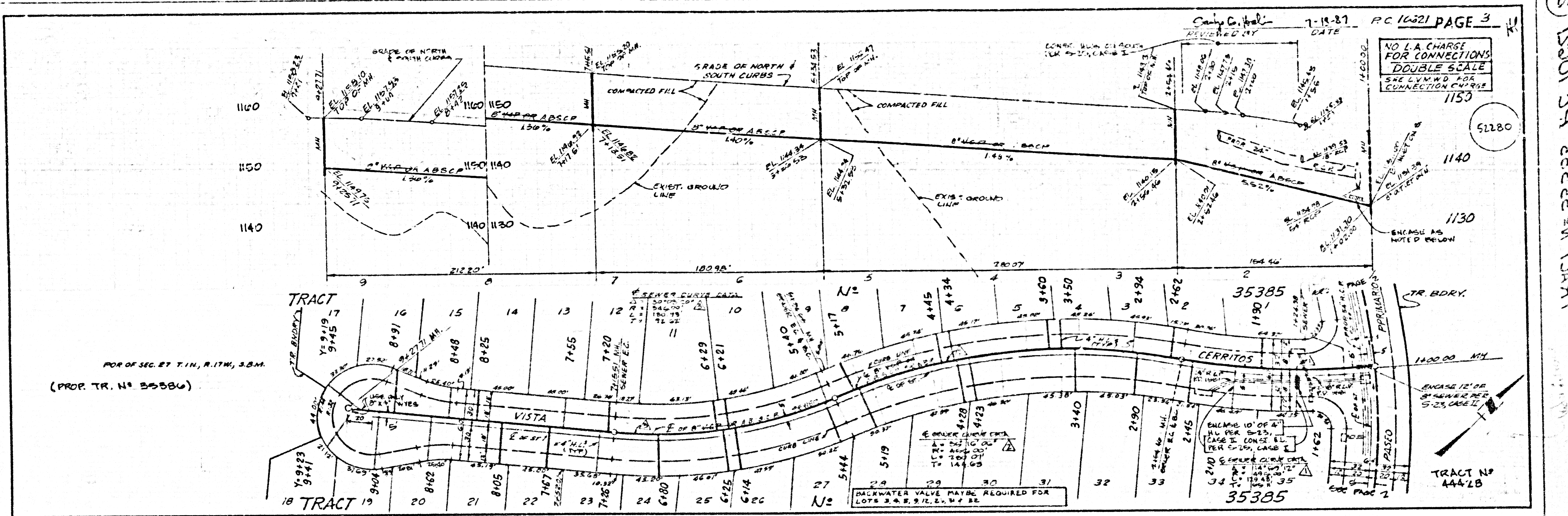
NO. 62 16841
 CALABAS BLDG. DIST. 91



P.C. 10621 PAGE 2
 7-13-87

52279

15801 09 28 87 22 11 TCAST



S 15301 24 282828N T0ART