

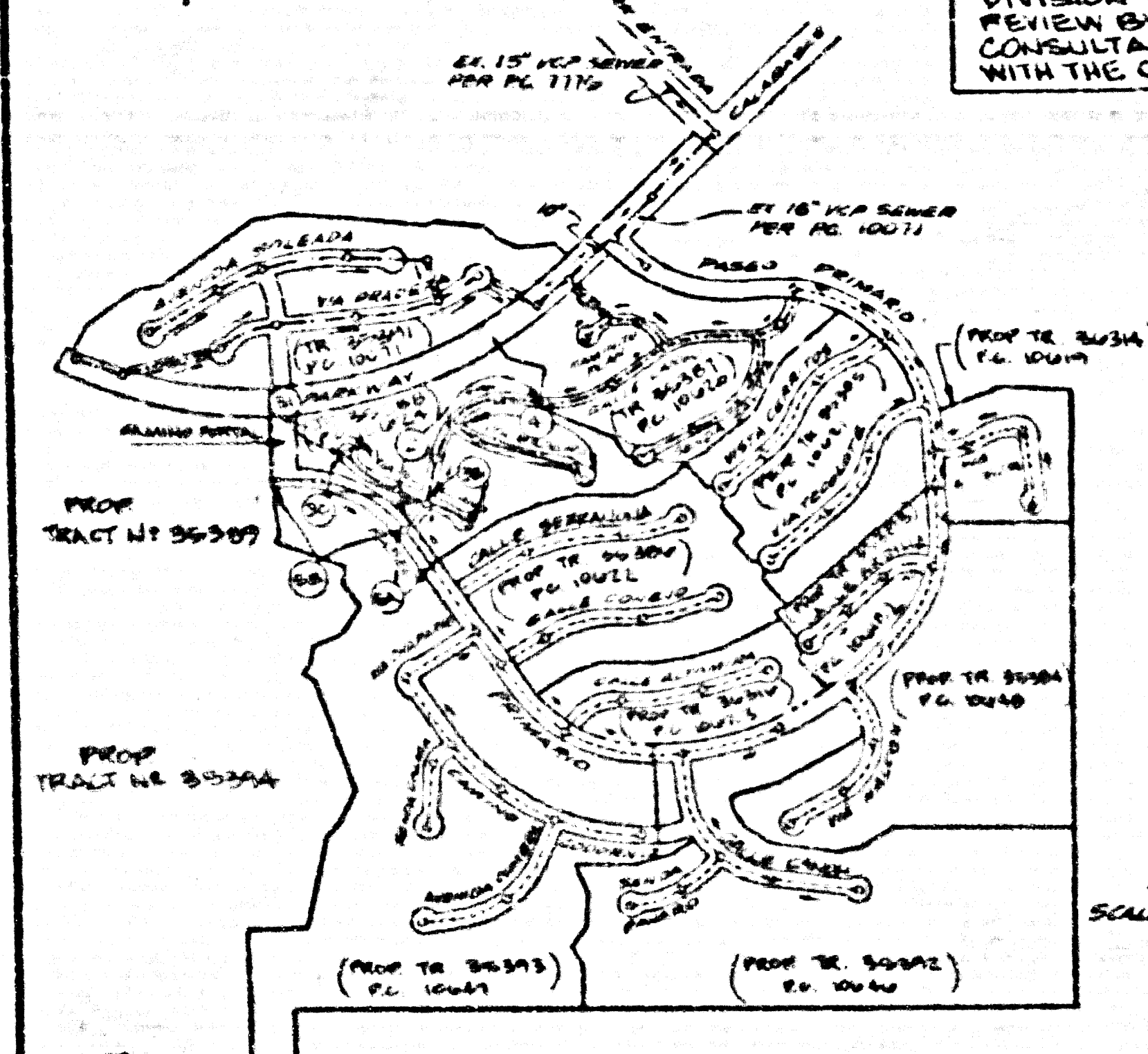
B.M. E.T. 9249 ELEV. 1525.812  
 E.H.B.N. 128 IN CO. 31 S. MCR  
 55° 5' 8.44" W. C.A. 181  
 CALABASAS RD. & HWY CALABASAS  
 MALIBU QUAD. 1902

**PRIVATE ENGINEER'S NOTICE TO CONTRACTORS**

The existence and location of any underground utility pipes or structures shown on these plans are obtained by a search of the available records. To the best of our knowledge there are no existing utilities except as shown on these plans. The contractor is required to locate and verify the location of all utilities to be protected by the construction of the sewer system. The contractor shall be responsible for notifying "UNDERGROUND SERVICE ALERT" at 1-800-422-4133 the working days prior to any excavation or construction.

*Robert Kallebaugh* 11-21-86  
 Registered Engineer (P.E. No. 47587)

APPROVAL OF THIS PLAN BY THE LAND DEVELOPMENT DIVISION IS BASED ON A REVIEW BY AN ENGINEER & CONSULTANT UNDER CONTRACT WITH THE COUNTY OF LOS ANGELES.



NOTE: LOTS 64, 65 & 66 ARE OPEN SPACE LOTS RESTRICTED TO NO CONSTRUCTION AND WILL NOT BE SERVED BY THIS SEWER.  
 INDEX MAP  
 TRACT NO. 35388  
 P.C. 10624

**CONSTRUCTION NOTES CONT'D.**

16. FULL COMPLIANCE WITH PART IV OF THE SPECIAL PROVISIONS IS REQUIRED FOR THE INSTALLATION OF A.B.S. COMPOSITE PIPE.
17. MANHOLE WATER STOP BASKETS AND LAMPS ARE REQUIRED FOR THE CONNECTION OF A.B.S. COMPOSITE PIPE TO MAINLINE STRUCTURES.
18. A.B.S. SOLID WALL PIPE MUST BE USED FOR VTE AND HOUSE LATERAL CONNECTIONS TO A.B.S. COMPOSITE MAINLINE BULKHEAD PIPE.
19. A.B.S. COMPOSITE PIPE SHALL BE BEDDED IN CONFORMANCE WITH THE TABLE IN SECTION 9-3.1.1 OF PART IV OF THE SPECIAL PROVISIONS.
20. THREE DEGREE FLECTION COUPLERS ARE REQUIRED FOR RADII OF CURVATURE LESS THAN 300 FEET WHEN USED ON A.B.S. COMPOSITE PIPE.
21. NO CONNECTION FOR DISPOSAL OF INDUSTRIAL WASTE IS ALLOWED IF A.B.S. COMPOSITE PIPE IS USED.
22. SEWER LINE CURVATURE SHALL NOT BE ACHIEVED BY PULLING OF JOISTS OR BELTING PIPE ENDS UNDER USING PLASTIC PIPE INCLUDING A.B.S. COMPOSITE PIPE.
23. ALL VTE AND HOUSE LATERALS ARE TO BE LOCATED AT LEAST FIVE FEET APART & WHEN POSSIBLE NOT CLOSER THAN FIVE FEET TO ANY MAINLINE.
24. A.B.S. SOLID WALL PIPE IS NOT ACCEPTABLE FOR USE AS MAINLINE SEWER.
25. ONLY VTE BRANCHES ARE TO BE USED FOR CONNECTION TO A.B.S. COMPOSITE MAINLINE SEWER PIPE.
26. TESTING PER LAB VIRGENES MUNICIPAL WATER DISTRICT
  - A. INFILTRATION & LEAKAGE TESTS: METHOD USED FOR TESTING WILL BE THE SAME AS L.A. COUNTY EXCEPT THE FLOW TO BE USED IS AS FOLLOWS:
    - 0.633 GALLONS/MINUTE/FOOT OF DIAMETER/1000 FEET
    - 0.30 GALLONS/DAY/FOOT DIAMETER/ MILE
  - B. MANHOLE LEAKAGE TESTS: AT THE DISCRETION OF THE DISTRICT'S REPRESENTATIVE, ONE MANHOLE OUT OF EVERY TEN MANHOLES AND A MINIMUM OF TWO WILL BE FILLED WITH WATER & AFTER THREE HOURS WILL BE EMPTYED FOR LEAKAGE WITH 50 DROP 18 LEVEL. FOR EVERY ONE MANHOLE NOT PASSING TESTS, FIVE MORE WILL BE TESTED AT THE DISCRETION OF THE DISTRICT'S REPRESENTATIVE.
  - C. AIR TESTING: WHERE THE DIFFERENCE IN ELEVATION BETWEEN THE SEWER OF THE UPPER STRUCTURE & THE SEWER OF THE LOWER STRUCTURE IS 18 INCHES OR MORE, 300 GPM AIR TEST WILL BE MADE. THE TIME TAKEN TO LOSE ONE (1) POUND PER SQUARE INCH GAUGE PRESSURE FROM THREE (3) POUNDS PER SQUARE INCH GAUGE PRESSURE TO TWO (2) POUNDS PER SQUARE INCH GAUGE PRESSURE SHALL NOT BE LESS THAN FIFTEEN MINUTES OF THE FOLLOWING TABLE:
 

MAIN PIPE DIAMETER	MINIMUM TIME LOSS
6" - 12"	1 MINUTE
15" - 24"	3 MINUTES
30" - 36"	5 MINUTES

 IF THE TIME IS LESS THAN LISTED IN THE TABLE ABOVE, THE CONTRACTOR SHALL MAKE SUCH REPAIRS AS ARE NECESSARY TO ELIMINATE THE EXCESSIVE LEAKAGE.  
 ISSUE NO HOUSE LATERAL PERMITS UNTIL OUTLET SEWERS PER P.C. 10071 & P.C. 10020 ARE ACCEPTED BY L.A. COUNTY FOR PUBLIC USE.

**GENERAL NOTES:**

1. ELEVATIONS ARE AS NOTED UNLESS OTHERWISE SPECIFIED.
2. NO REVISIONS SHALL BE MADE IN THESE PLANS WITHOUT THE APPROVAL OF THE DIVISION OF PUBLIC WORKS.
3. NO REPRESENTATIVE OF THE COUNTY SHALL BE PERMITTED TO TAKE ANY ACTION WITHIN THE PUBLIC WORKS DEPARTMENT.
4. GRABLES TO BE CONSTRUCTED IN ACCORDANCE WITH THE STANDARD SPECIFICATIONS FOR PUBLIC WORKS CONSTRUCTION.
5. THE PRIVATE ENGINEER SHALL FURNISH THE HOUSE LATERAL DEPTHS AT THE PROPERTY LINE, THE TOP OF CURB ELEVATION FOR EACH HOUSE LATERAL ON THE GRADE SHEET.
6. BEFORE WORK CAN BE STARTED THE CONTRACTOR MUST OBTAIN A PERMIT TO EXCAVATE IN COUNTY STREETS FROM THE COUNTY DEPT. OF PUBLIC WORKS. THE COST OF CONSTRUCTION INSPECTION AND RECORD PLANS LOS ANGELES COUNTY SHALL COVER THE COST OF CONSTRUCTION INSPECTION AND RECORD PLANS.
7. APPROVAL OF THIS PLAN BY THE COUNTY OF LOS ANGELES DOES NOT CONSTITUTE A REPRESENTATION AS TO THE ACCURACY OF THE LOCATION OF OR THE EXISTENCE OR NON-EXISTENCE OF ANY UNDERGROUND UTILITY PIPE OR STRUCTURE WITHIN THE LIMITS OF THIS PROJECT. THIS NOTE APPLIES TO ALL PAGES.
8. REFER TO SECTION 9.1.1 OF THE STANDARD SPECIFICATIONS FOR PUBLIC WORKS CONSTRUCTION.
9. PERMITS TO EXCAVATE IN COUNTY STREETS FROM THE COUNTY DEPT. OF PUBLIC WORKS SHALL BE OBTAINED AT LEAST 30 DAYS PRIOR TO THE COMMENCEMENT OF CONSTRUCTION. THE CONTRACTOR SHALL BE RESPONSIBLE FOR THE COST OF OBTAINING SUCH PERMITS.
10. THE CONTRACTOR SHALL NOTIFY THE COUNTY DEPT. OF PUBLIC WORKS OF ANY CHANGES TO THE ORIGINAL PLAN AT LEAST 30 DAYS PRIOR TO THE COMMENCEMENT OF CONSTRUCTION.
11. HOUSE LATERALS TO BE CONSTRUCTED WITH INVERTS AT PROPOSED LINE 3 FEET BELOW CURB GRADE EXCEPT AS NOTED.
12. VTE OR VTE BRANCHES SHALL BE USED FOR CONNECTIONS TO MAINLINE SEWERS EXCEPT AS NOTED.
13. ALL STRUCTURES SHALL BE CONSTRUCTED IN ACCORDANCE WITH THE STANDARD SPECIFICATIONS FOR PUBLIC WORKS CONSTRUCTION.
14. MANHOLES SHALL BE CONSTRUCTED WITH INVERTS AT PROPOSED LINE 3 FEET BELOW CURB GRADE AT THE CENTER LINE OF EACH BRANCH.
15. MANHOLE FORMS UNLESS OTHERWISE SPECIFIED SHALL BE 30 INCHES ABOVE FINISHED GRADE.
16. 6" DIA. HOUSE LATERALS SHALL BE 3 FEET OR 6 FEET PER STANDARD SPECIFICATIONS SECTION 9.1.1. CASE 4 TWO FEET ON EACH SIDE FROM THE POINT OF INTERFERENCE.
17. IF DURING THE COURSE OF CONSTRUCTION IT IS DETERMINED THAT THERE IS LESS THAN FOUR FEET OF COVER OVER THE TOP OF A MAIN LINE OF HOUSE LATERAL LEVER WHICH IS NOT INDICATED ON THE PLANS THE PIPE SHALL BE ENCASED PER CASE 4 UNLESS OTHERWISE APPROVED BY THE COUNTY DEPT. OF PUBLIC WORKS.
18. ALL JOINTS IN HOUSE LATERALS AND VTE'S SHALL BE MADE WITH A RUBBER GREESE JOINT "C" OR "D".
19. ALL JOINTS IN HOUSE LATERALS AND VTE'S SHALL BE MADE WITH A RUBBER GREESE JOINT "C" OR "D".
20. ALL JOINTS IN HOUSE LATERALS AND VTE'S SHALL BE MADE WITH A RUBBER GREESE JOINT "C" OR "D".
21. ALL JOINTS IN HOUSE LATERALS AND VTE'S SHALL BE MADE WITH A RUBBER GREESE JOINT "C" OR "D".
22. ALL JOINTS IN HOUSE LATERALS AND VTE'S SHALL BE MADE WITH A RUBBER GREESE JOINT "C" OR "D".
23. ALL JOINTS IN HOUSE LATERALS AND VTE'S SHALL BE MADE WITH A RUBBER GREESE JOINT "C" OR "D".
24. ALL JOINTS IN HOUSE LATERALS AND VTE'S SHALL BE MADE WITH A RUBBER GREESE JOINT "C" OR "D".
25. ALL JOINTS IN HOUSE LATERALS AND VTE'S SHALL BE MADE WITH A RUBBER GREESE JOINT "C" OR "D".
26. ALL JOINTS IN HOUSE LATERALS AND VTE'S SHALL BE MADE WITH A RUBBER GREESE JOINT "C" OR "D".
27. ALL JOINTS IN HOUSE LATERALS AND VTE'S SHALL BE MADE WITH A RUBBER GREESE JOINT "C" OR "D".
28. ALL JOINTS IN HOUSE LATERALS AND VTE'S SHALL BE MADE WITH A RUBBER GREESE JOINT "C" OR "D".
29. ALL JOINTS IN HOUSE LATERALS AND VTE'S SHALL BE MADE WITH A RUBBER GREESE JOINT "C" OR "D".
30. ALL JOINTS IN HOUSE LATERALS AND VTE'S SHALL BE MADE WITH A RUBBER GREESE JOINT "C" OR "D".

**CONSTRUCTION NOTES:**

1. MANHOLE FORMS UNLESS OTHERWISE SPECIFIED SHALL BE 30 INCHES ABOVE FINISHED GRADE.
2. 6" DIA. HOUSE LATERALS SHALL BE 3 FEET OR 6 FEET PER STANDARD SPECIFICATIONS SECTION 9.1.1. CASE 4 TWO FEET ON EACH SIDE FROM THE POINT OF INTERFERENCE.
3. IF DURING THE COURSE OF CONSTRUCTION IT IS DETERMINED THAT THERE IS LESS THAN FOUR FEET OF COVER OVER THE TOP OF A MAIN LINE OF HOUSE LATERAL LEVER WHICH IS NOT INDICATED ON THE PLANS THE PIPE SHALL BE ENCASED PER CASE 4 UNLESS OTHERWISE APPROVED BY THE COUNTY DEPT. OF PUBLIC WORKS.
4. ALL JOINTS IN HOUSE LATERALS AND VTE'S SHALL BE MADE WITH A RUBBER GREESE JOINT "C" OR "D".
5. ALL JOINTS IN HOUSE LATERALS AND VTE'S SHALL BE MADE WITH A RUBBER GREESE JOINT "C" OR "D".
6. ALL JOINTS IN HOUSE LATERALS AND VTE'S SHALL BE MADE WITH A RUBBER GREESE JOINT "C" OR "D".
7. ALL JOINTS IN HOUSE LATERALS AND VTE'S SHALL BE MADE WITH A RUBBER GREESE JOINT "C" OR "D".
8. ALL JOINTS IN HOUSE LATERALS AND VTE'S SHALL BE MADE WITH A RUBBER GREESE JOINT "C" OR "D".
9. ALL JOINTS IN HOUSE LATERALS AND VTE'S SHALL BE MADE WITH A RUBBER GREESE JOINT "C" OR "D".
10. ALL JOINTS IN HOUSE LATERALS AND VTE'S SHALL BE MADE WITH A RUBBER GREESE JOINT "C" OR "D".
11. ALL JOINTS IN HOUSE LATERALS AND VTE'S SHALL BE MADE WITH A RUBBER GREESE JOINT "C" OR "D".
12. ALL JOINTS IN HOUSE LATERALS AND VTE'S SHALL BE MADE WITH A RUBBER GREESE JOINT "C" OR "D".
13. ALL JOINTS IN HOUSE LATERALS AND VTE'S SHALL BE MADE WITH A RUBBER GREESE JOINT "C" OR "D".
14. ALL JOINTS IN HOUSE LATERALS AND VTE'S SHALL BE MADE WITH A RUBBER GREESE JOINT "C" OR "D".
15. ALL JOINTS IN HOUSE LATERALS AND VTE'S SHALL BE MADE WITH A RUBBER GREESE JOINT "C" OR "D".
16. ALL JOINTS IN HOUSE LATERALS AND VTE'S SHALL BE MADE WITH A RUBBER GREESE JOINT "C" OR "D".
17. ALL JOINTS IN HOUSE LATERALS AND VTE'S SHALL BE MADE WITH A RUBBER GREESE JOINT "C" OR "D".
18. ALL JOINTS IN HOUSE LATERALS AND VTE'S SHALL BE MADE WITH A RUBBER GREESE JOINT "C" OR "D".
19. ALL JOINTS IN HOUSE LATERALS AND VTE'S SHALL BE MADE WITH A RUBBER GREESE JOINT "C" OR "D".
20. ALL JOINTS IN HOUSE LATERALS AND VTE'S SHALL BE MADE WITH A RUBBER GREESE JOINT "C" OR "D".
21. ALL JOINTS IN HOUSE LATERALS AND VTE'S SHALL BE MADE WITH A RUBBER GREESE JOINT "C" OR "D".
22. ALL JOINTS IN HOUSE LATERALS AND VTE'S SHALL BE MADE WITH A RUBBER GREESE JOINT "C" OR "D".
23. ALL JOINTS IN HOUSE LATERALS AND VTE'S SHALL BE MADE WITH A RUBBER GREESE JOINT "C" OR "D".
24. ALL JOINTS IN HOUSE LATERALS AND VTE'S SHALL BE MADE WITH A RUBBER GREESE JOINT "C" OR "D".
25. ALL JOINTS IN HOUSE LATERALS AND VTE'S SHALL BE MADE WITH A RUBBER GREESE JOINT "C" OR "D".
26. ALL JOINTS IN HOUSE LATERALS AND VTE'S SHALL BE MADE WITH A RUBBER GREESE JOINT "C" OR "D".
27. ALL JOINTS IN HOUSE LATERALS AND VTE'S SHALL BE MADE WITH A RUBBER GREESE JOINT "C" OR "D".
28. ALL JOINTS IN HOUSE LATERALS AND VTE'S SHALL BE MADE WITH A RUBBER GREESE JOINT "C" OR "D".
29. ALL JOINTS IN HOUSE LATERALS AND VTE'S SHALL BE MADE WITH A RUBBER GREESE JOINT "C" OR "D".
30. ALL JOINTS IN HOUSE LATERALS AND VTE'S SHALL BE MADE WITH A RUBBER GREESE JOINT "C" OR "D".

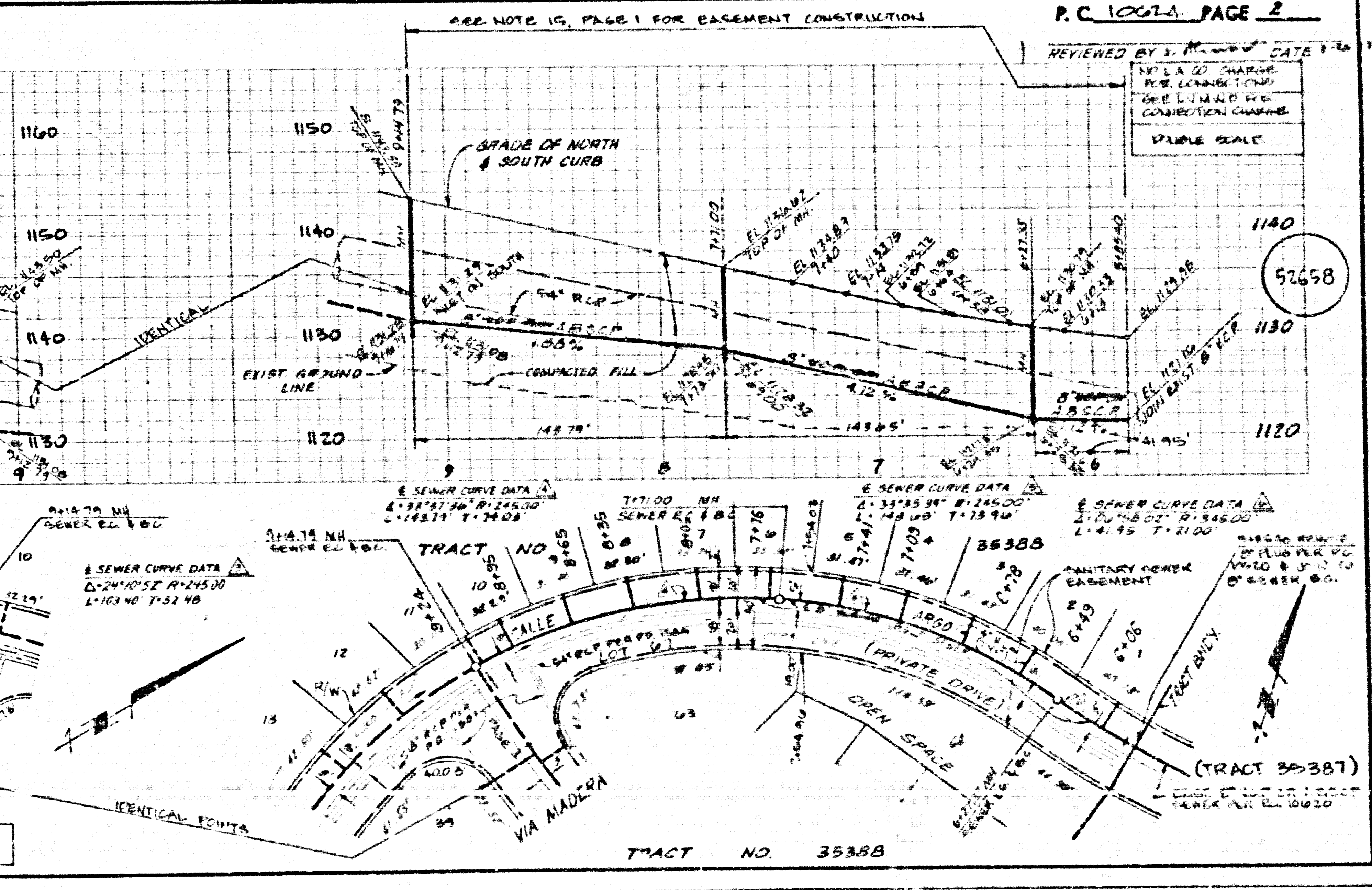
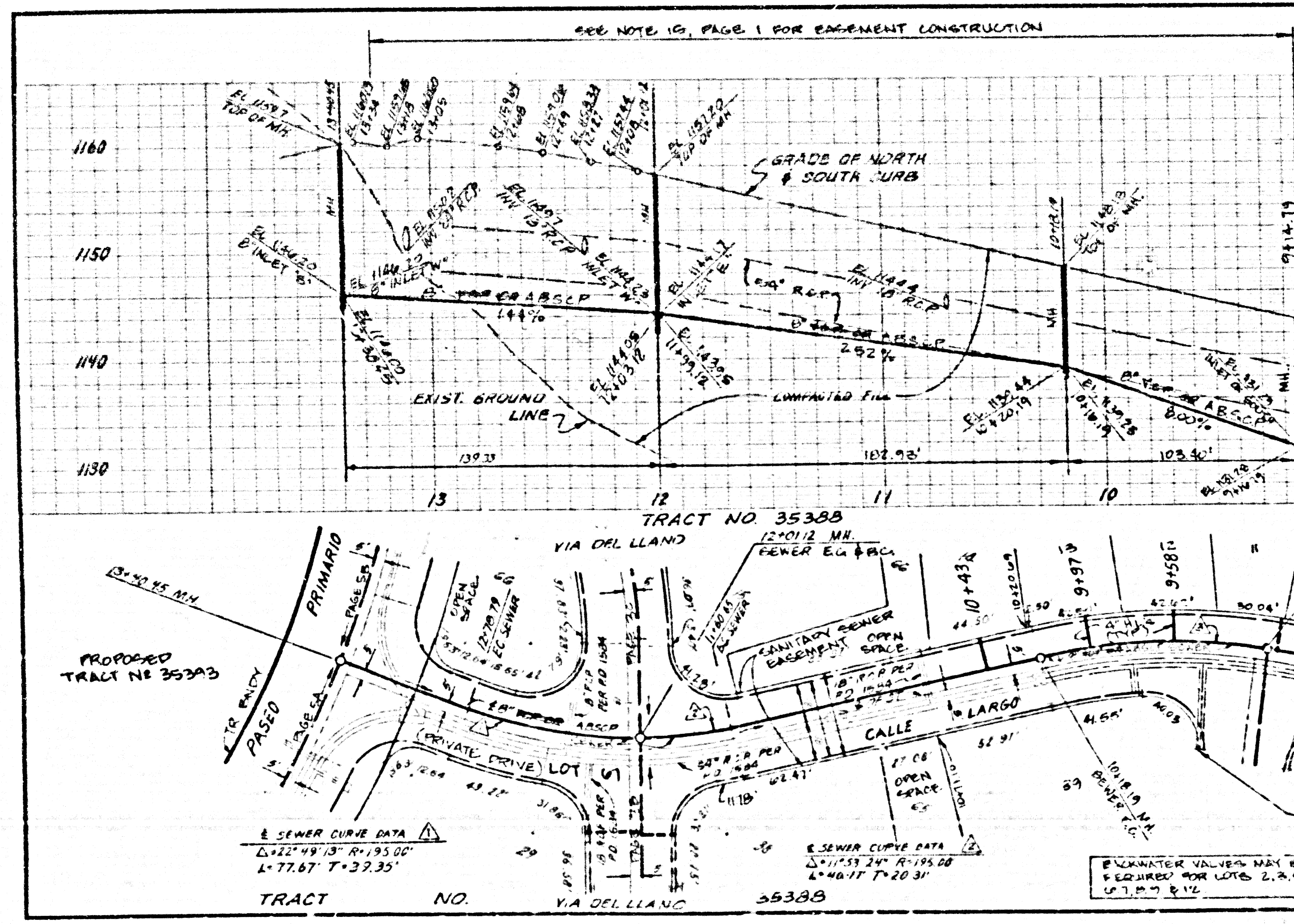
**SANITARY SEWERS**

TO BE CONSTRUCTED IN  
**TRACT NO. 35388**  
 PRIVATE CONTRACT NO. 10624  
 C-232

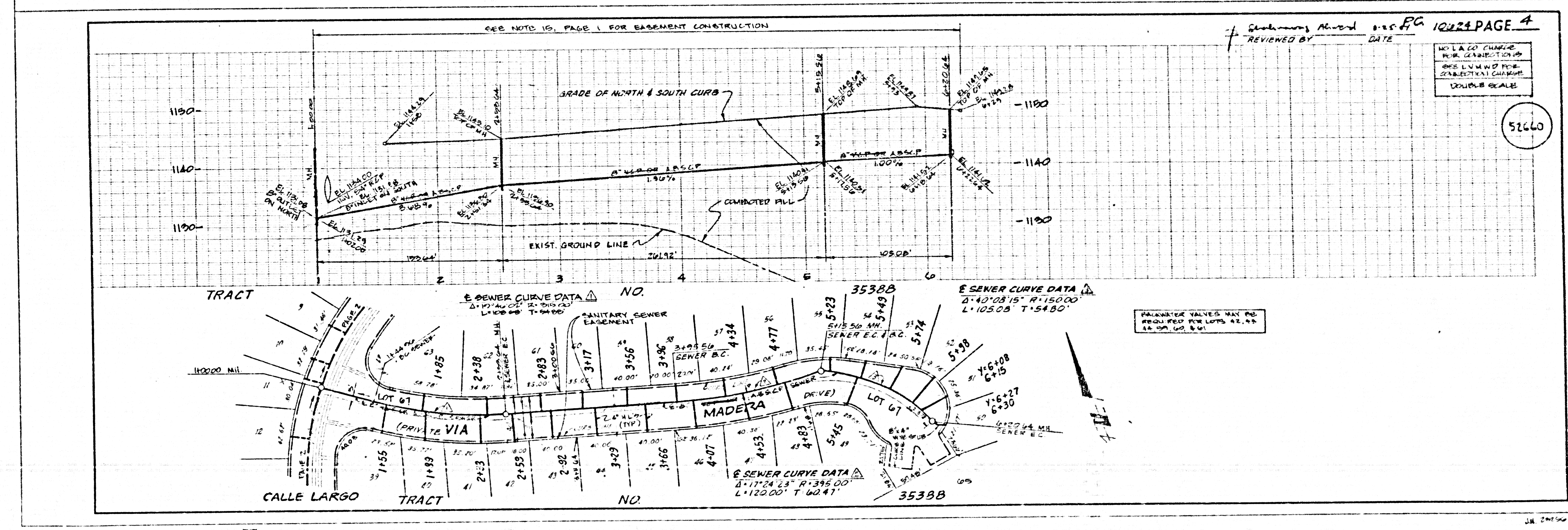
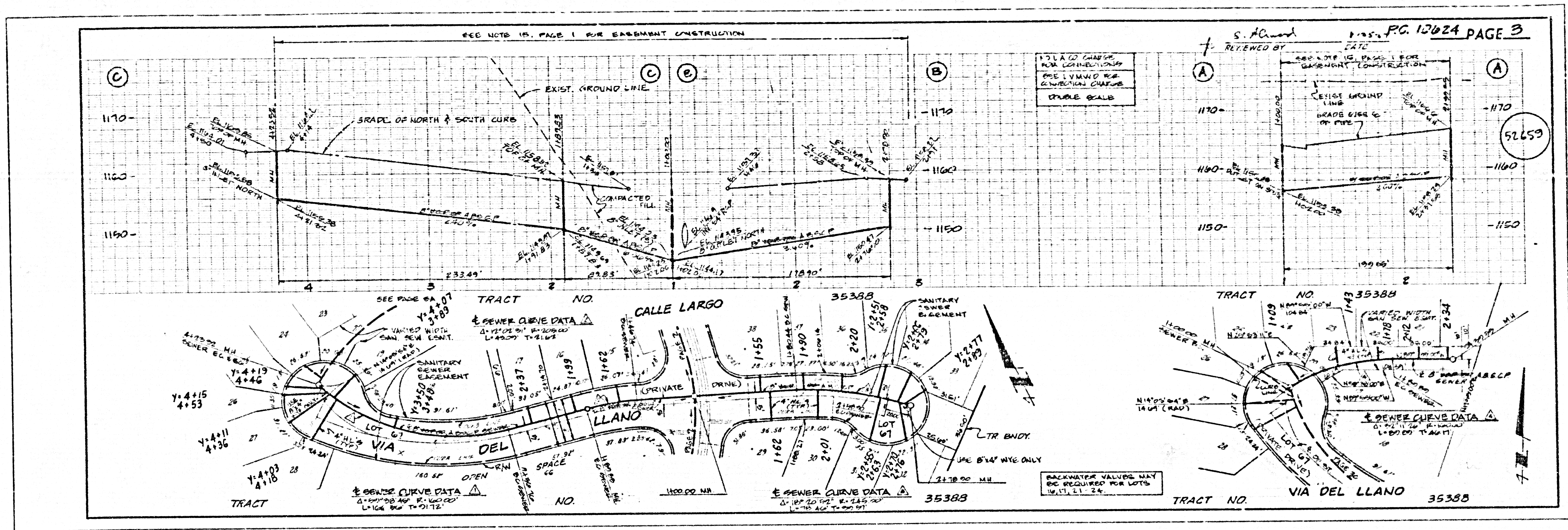
3 SHEETS, 5 PAGES  
 SCALE: 1" = 40' HORIZONTAL  
 1" = 4' VERTICAL  
 DATE: OCTOBER, 1986  
 PREPARED IN THE OFFICES OF  
*Robert Kallebaugh* 11-21-86  
 REGISTERED PROFESSIONAL ENGINEER  
 CIVIL ENGINEER  
 2700 WILSON BLVD., SUITE 100  
 LOS ANGELES, CALIFORNIA 90024  
 (213) 475-5700

ITEM	QUANTITY	UNIT PRICE	TOTAL
MANHOLE	1	\$1,100.00	\$1,100.00
MANHOLE PUBLIC SAFETY EQUIPMENT	1	\$1,100.00	\$1,100.00
6" DIA. HOUSE LATERAL	1	\$1,100.00	\$1,100.00
3" DIA. HOUSE LATERAL	1	\$1,100.00	\$1,100.00
CHAMBER AND ENCASING	1	\$1,100.00	\$1,100.00
VTE OR VTE BRANCH	1	\$1,100.00	\$1,100.00
ADJUSTABLE BRIDGE BRACKET	1	\$1,100.00	\$1,100.00
EXCAVATION FILL	1	\$1,100.00	\$1,100.00
NON-REINFORCED PRECAST CONCRETE 24" DIA. MANHOLE	1	\$1,100.00	\$1,100.00

COUNTY OF LOS ANGELES, CALIFORNIA  
 THOMAS A. TIDHMANSON, DIRECTOR  
 DEPARTMENT OF PUBLIC WORKS  
 APPROVED: *Don E. Anderson* 11/21/86  
 APPROVED: *Robert Kallebaugh* 11/21/86  
 REVIEWED: *Stromberg, Amund*  
 A.S.L. CONSULTING ENG. DATE  
 CALABASAS INDG. DIST. 91



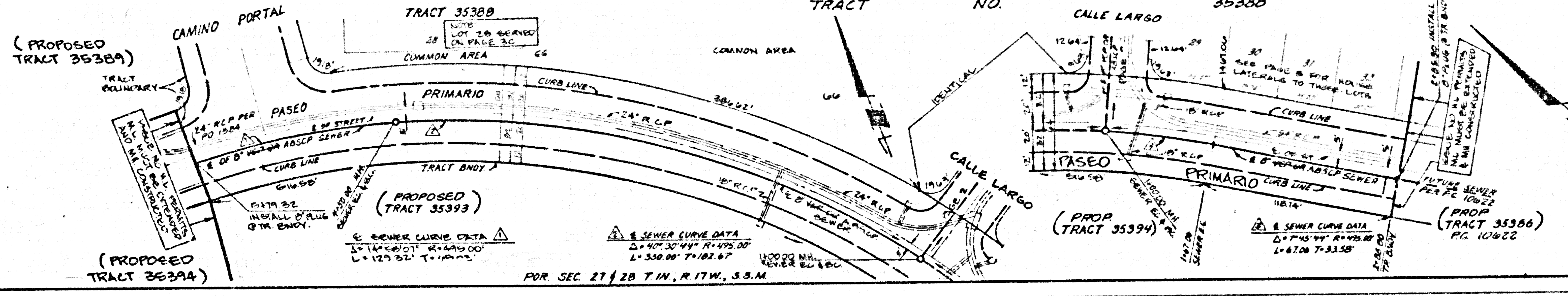
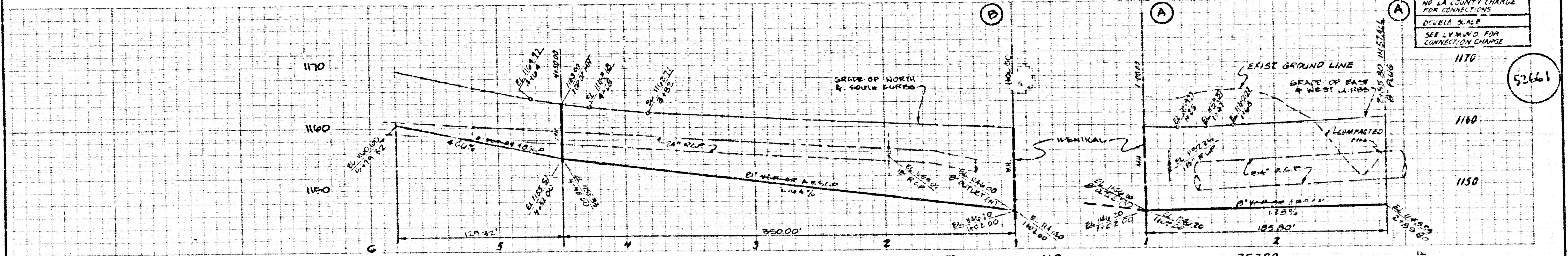
ASAC 09  
 88888 ON TCAST



5 ASB01 SA 0802 SA TRACT

NO. LA COUNTY CHARGE FOR CONNECTIONS  
DOUBLE SCALE  
SEE LYMAN'S FOR CONNECTION CHARGE

52661



3 15301 24 8888 ON TRACT