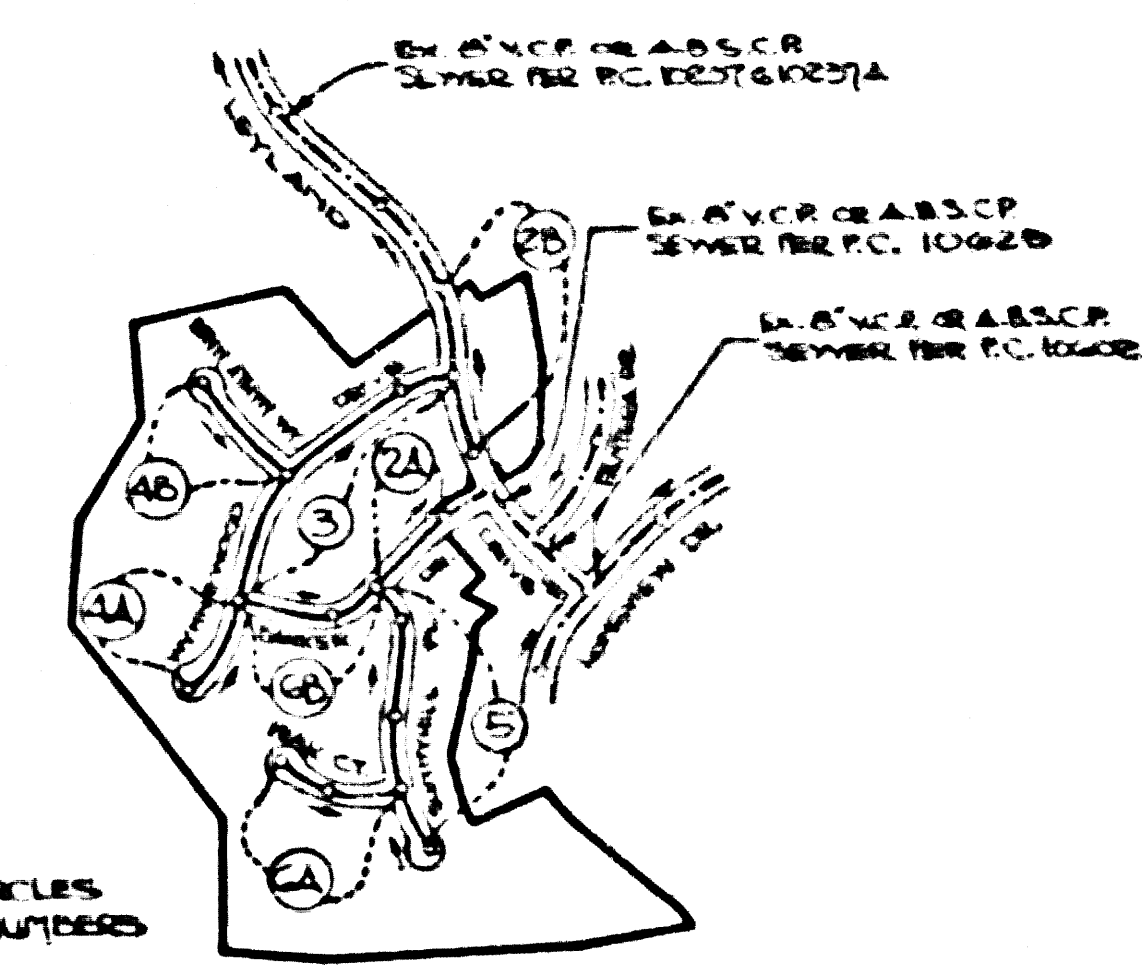
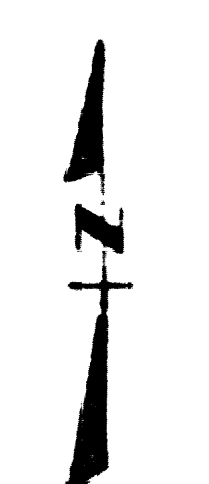


B.M. C.G. 3911 ELEV. 895.556
 L&T IN E END CB 44 FT S 9 36 FT W
 C/L INT GRAND AVE & DIAMOND BAR
 BLVD MND 5M C-12
 Q1 TERBEIN QUAD. 19 15.



Notes: Numbers in circles indicate page numbers.

INDEX MAP
 TRACT NO 42578
 P.C. 10626
 SCALE: 1"=60'

PRIVATE ENGINEER'S NOTICE TO CONTRACTORS

THE EXISTENCE AND LOCATION OF ANY UNDERGROUND UTILITY PIPES OR STRUCTURES SHOWN ON THESE PLANS ARE OBTAINED BY A SEARCH OF THE AVAILABLE RECORDS. TO THE BEST OF OUR KNOWLEDGE THERE ARE NO EXISTING UTILITIES AS SHOWN ON THESE PLANS. THE CONTRACTOR IS REQUIRED TO TAKE THE NECESSARY PRECAUTIONS TO PROTECT THE UTILITIES AS SHOWN AND ANY OTHER UTILITIES NOT RECORDED OR NOT SHOWN ON THESE PLANS. THE CONTRACTOR SHALL BE RESPONSIBLE FOR NOTIFYING UNDERGROUND UTILITY SERVICE AT 1-800-452-4730 THE EVENING PRIOR TO ANY EXCAVATION.

CONSTRUCTION NOTES CONT.

- 16. FULL COMPLIANCE WITH PART IV OF THE SPECIAL PROVISIONS IS REQUIRED FOR THE INSTALLATION OF A 8" S.C.P. COMPOSITE PIPE
- 17. MANHOLE WATER STOP CASSETS AND CLAMPS ARE REQUIRED FOR THE CONNECTION OF A 8" S.C.P. COMPOSITE PIPE TO MANHOLE STRUCTURES
- 18. A 8" SOLID WALL PIPE MUST BE USED FOR WYE AND HOUSE LATERAL CONNECTIONS TO A 8" S.C.P. COMPOSITE MAINLINE SEWER PIPE
- 19. A 8" S.C.P. COMPOSITE PIPE SHALL BE BEDDED IN CONFORMANCE WITH THE TABLE IN SECTION 8.3.1 OF PART IV OF THE SPECIAL PROVISIONS
- 20. THREE DEGREE DEFLECTION COUPLERS ARE REQUIRED FOR RADII OF CURVATURE LESS THAN 200 FEET WHEN USING A 8" S.C.P. COMPOSITE PIPE
- 21. NO CONNECTIONS FOR DISPOSAL OF INDUSTRIAL WASTES IS ALLOWED ON A 8" S.C.P. COMPOSITE PIPE IS USED
- 22. SEWER LINE CURVATURE SHALL NOT BE ALLOWED BY JOINTS OF BEVELING PIPE UNLESS BEING USED PLASTIC PIPE INCLUDING A 8" S.C.P. COMPOSITE PIPE
- 23. ALL WYES AND/OR HOUSE LATERALS ARE TO BE LOCATED AT LEAST FIVE FEET APART AND WHEN POSSIBLE NOT CLOSER THAN FIVE FEET TO ANY MANHOLE
- 24. A 8" S.C.P. COMPOSITE PIPE IS NOT ACCEPTABLE FOR USE AS MANHOLE SEWER
- 25. ONLY WYE BRANCHES ARE TO BE USED FOR CONNECTION TO A 8" S.C.P. COMPOSITE MAINLINE SEWER PIPE

NO CONNECTION FOR THE DISPOSAL OF INDUSTRIAL WASTES SHALL BE MADE TO SEWERS SHOWN ON THESE DRAWINGS UNTIL A PERMIT FOR INDUSTRIAL WASTEWATER DISCHARGE HAS BEEN ISSUED BY THE SANITATION DISTRICTS FOR SAID CONNECTION.

BEFORE BREAKING INTO OR CONSTRUCTION ON A COUNTY SANITATION DISTRICT SEWER AND PRIOR TO FINAL ACCEPTANCE OF THE PROJECT, SANITATION DISTRICT INSPECTOR SHALL BE NOTIFIED BY PHONE (818) 962-8605 SO THAT REQUIRED INSPECTION CAN BE MADE.

ISSUE NO PERMITS UNTIL OUTLET SEWERS P.C. 10251 & P.C. 10626 ARE ACCEPTED FOR PUBLIC USE BY L.A. COUNTY

GENERAL NOTES:

- 1. ELEVATIONS ARE IN FEET ABOVE U.S.C. & G.S. SEA LEVEL DATUM OF 1929
- 2. NO REVISIONS SHALL BE MADE IN THESE PLANS WITHOUT THE APPROVAL OF THE DEPT. OF PUBLIC WORKS
- 3. NO REPRESENTATIVE OF THE DEPT. OF PUBLIC WORKS SHALL BE REQUIRED TO LAID OUT ANY PORTION OF THE WORK
- 4. GRADES TO WHICH THIS IMPROVEMENT IS TO BE CONSTRUCTED ARE SHOWN ON PLANS AND PROFILES. GRADES POINTS FOR TOP OF CURBS, CENTER LINE OF STRAIGHT OR CURVE ELEVATIONS ARE SHOWN BY CIRCLES ON PROFILES. AT ALL POINTS BETWEEN DESIGNATED POINTS THE GRADE SHALL BE ESTABLISHED SO AS TO CONFORM TO A 3" RADIUS LINE DRAWN BETWEEN THE TWO DESIGNATED POINTS
- 5. THE PRIVATE ENGINEER SHALL FURNISH THE CURVE OF PUBLIC WORKS WITH GRADE SHEETS AND STATIONING FOR ALL HOUSE LATERALS AND 1" OR 1 1/2" BRANCHES AND SHALL PROVIDE STAKES FOR THEM AT THEIR PROPER LOCATIONS WITH STATIONING PLAINLY MARKED. ALL HOUSE LATERALS SHALL BE CONSTRUCTED IN A STRAIGHT ALIGNMENT AT RIGHT ANGLES FROM THE MAIN LINE. ANY CHANGE IN ALIGNMENT SHALL BE INDICATED BY A DOTTED LINE WITH THE MAIN LINE SEWER ANY CHANGE IN ALIGNMENT SHALL BE INDICATED BY A DOTTED LINE WITH THE MAIN LINE SEWER
- 6. THE PRIVATE ENGINEER SHALL FURNISH THE HOUSE LATERAL DEPTH AT THE PROPERTY LINE BELOW THE TOP OF CURB ELEVATION FOR EACH WYHOP APPROXIMATE TO THE GRADE SHEET
- 7. BEFORE WORK CAN BE STARTED THE CONTRACTOR MUST OBTAIN A PERMIT TO EXCAVATE IN COUNTY STREETS FROM THE A COUNTY ROAD DEPT. DISTRICT OFFICE NO. 1 AND PAY A FEE TO THE INSPECTOR OF PUBLIC WORKS, 2250 ALCAZAR ST., LOS ANGELES, CALIFORNIA TO COVER THE COST OF CONSTRUCTION INSPECTION AND RECORD PLANS
- 8. IF WORK IS TO BE DONE IN A STATE HIGHWAY A PERMIT MUST BE OBTAINED FROM THE STATE OF CALIFORNIA DIVISION OF HIGHWAYS, 200 SOUTH SPRING STREET, LOS ANGELES, CALIFORNIA
- 9. APPROVAL OF THIS PLAN BY THE COUNTY OF LOS ANGELES DOES NOT CONSTITUTE A REPRESENTATION AS TO THE ACCURACY OF THE LOCATION OR OF THE EXISTENCE OR NON-EXISTENCE OF ANY UNDERGROUND UTILITY PIPE OR STRUCTURE WITHIN THE LIMITS OF THE PROJECT. THIS NOTE APPLIES TO ALL PAGES
- 10. REFER TO SECTION 7.8.4.1 OF THE STANDARD SPECIFICATIONS FOR THE WORKING SAFETY CODES
- 11. PRIOR TO THE RELEASE OF THE REQUIRED SEWER CONSTRUCTION PERMIT THE CONTRACTOR SHALL OBTAIN AND FILE WITH THE DEPT. OF PUBLIC WORKS COPIES OF A PERMIT TO EXCAVATE ACCURATELY FROM THE LOS ANGELES COUNTY ROAD DEPARTMENT A PERMIT FOR EXCAVATION AND THEREAFTER FROM THE STATE OF CALIFORNIA DIVISION OF HIGHWAYS SAFETY AND A CERTIFICATE OF NECESSARY COMPENSATION AGREEMENT WITH THE DEPT. OF PUBLIC WORKS, 2250 ALCAZAR ST., RM. A 203, LOS ANGELES, CA. 90033 FOR THE CERTIFICATE HOLDER TO BE NOTIFIED IN WRITING PRIOR TO CANCELLATION OF PROJECT

CONSTRUCTION NOTES:

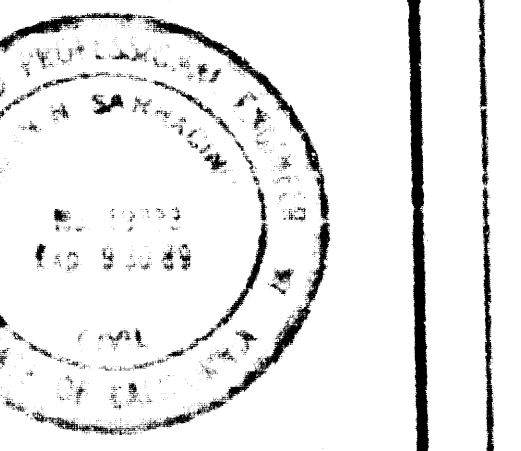
- 1. WORK SHALL BE CONSTRUCTED ACCORDING TO THE STANDARD SPECIFICATIONS FOR PUBLIC WORKS CONSTRUCTION 1988, FOR PLAN WITH THE (SEE SUPPLEMENT) AND WITH THE SPECIAL PROVISIONS FOR THE CONSTRUCTION OF SANITARY SEWERS DISTRICT DEPT. 21 AND SHALL BE PROSECUTED ONLY IN THE PRESENCE OF THE DEPT. OF PUBLIC WORKS
- 2. THE CONTRACTOR SHALL NOTIFY THE CONSTRUCTION ON PUBLIC WORKS DEPT. TEL. 213-226-8097 AT LEAST 24 HOURS BEFORE STARTING ANY WORK UNDER THIS CONTRACT
- 3. HOUSE LATERALS TO BE CONSTRUCTED WITH INVERTS AT PROPERTY LINE 6" SET BELOW CURB GRADE EXCEPT AS NOTED
- 4. WYE OR TE BRANCHES MAY BE USED FOR CONNECTION TO MAINLINE SEWERS EXCEPT AS NOTED
- 5. WYE BRANCHES ONLY MAY BE USED FOR CONNECTIONS TO MANHOLE SEWERS IF A S.C.P. IS USED
- 6. ALL STRUCTURES SHALL BE EITHER BRICK MANHOLES PER S-3 OR PRECAST CONC. TE MANHOLES PER S-2 EXCEPT AS NOTED
- 7. PROVIDE STAKES ON THE PROPERTY LINE OR PROPERTY LINES PRODUCED AT RIGHT ANGLES TO THE SEWER LINE AT THE CENTER LINE OF EACH MANHOLE
- 8. MANHOLE FORMS IN UNIMPROVED PORTIONS OF WAY TO BE 36 INCHES ABOVE FINISHED GRADE
- 9. STIFFENED CLAY PIPE JOINTS SHALL BE TYPE "C" OR "D" PER STANDARD SPECIFICATIONS SECTION 200.2
- 10. IF A POWER POLE IS WITHIN THREE FEET OF THE SEWER THE SEWER SHALL BE ENCASED PER S-23 CASE 4 TWO FEET ON EACH SIDE FROM THE POINT OF INTERFERENCE
- 11. TO DETERMINE THE COURSE OF CONSTRUCTION IT IS DETERMINED THAT THERE IS LESS THAN FOUR FEET OF COVER OVER THE TOP OF A MAINLINE HOUSE LATERAL SEWER WHICH IS NOT INDICATED ON THE PLANS, THE PIPE SHALL BE ENCASED IN 4" WALLS OF CONCRETE APPROVED BY THE DIRECTOR OF PUBLIC WORKS
- 12. ALL JOINTS BETWEEN CAST IRON PIPE AND STIFFENED CLAY PIPE SHALL BE MADE WITH A RUBBER SLEEVE JOINT TYPE "C" OR "D" WITH BRUSHING IF NECESSARY PER STANDARD SPECIFICATIONS SECTION 200.2
- 13. SEWERS TO BE TESTED FOR LEAKAGE PER SECTION 200.4 OF THE STANDARD SPECIFICATIONS AND SPECIAL PROVISIONS
- 14. ALL JOINTS BETWEEN CAST IRON PIPE AND STIFFENED CLAY PIPE SHALL BE MADE WITH APPROVED FITTINGS
- 15. SEWERS TO BE TESTED FOR LEAKAGE PER SECTION 200.4 OF THE STANDARD SPECIFICATIONS AND SPECIAL PROVISIONS
- 16. FULL COMPLIANCE WITH SECTION 200.3 & 200.4 OF THE STANDARD SPECIFICATIONS WILL BE REQUIRED FOR BACKFILL IN STREETS OR HIGHWAYS COMPACTED AND SAND FILLING WITHIN A SQUARE FEET OF THE STANDARD SPECIFICATIONS SHALL BE PROVIDED BY THE PERMITTEE PRIOR TO THE ISSUANCE OF A CERTIFICATE OF PARTIAL ACCEPTANCE
- 17. SPECIAL BACKFILL REQUIREMENTS: (A) BACKFILL TRENCH AND REPLACE OTHER EARTH SO AS TO ACHIEVE THE NATURAL OR PROPOSED GRADES AND SLOPES SHOWN ON THE GRADING PLAN APPROVED FOR THE DEVELOPMENT OF THE BUILDING AND SURVEY DIVISION. (B) ALL BACKFILL AND EARTH REPLACEMENT SHALL BE COMPACTED TO A MINIMUM OF 90% OF MAXIMUM DENSITY PER A S-1 BY METHOD OF TEST 1988-17 AS MODIFIED ACCEPTABLE CERTIFICATION OF EACH LOCAL JURISDICTION SHALL BE SUBMITTED TO THE CONSTRUCTION DIV. PUBLIC WORKS DEPT.

DOUBLE SCALE

PROF. E. ALIGNMENT AND GRADE OF
SANITARY SEWERS
 TO BE CONSTRUCTED

TRACT NO 42578
PRIVATE CONTRACT NO. 10626

3 SHEETS, 6 PAGES
 SCALE: HORIZ. 1"=40' VERT. 1"=10'
 NOVEMBER 1986
 PREPARED IN THE OFFICES OF
LIND & HILLERUD, INC.
 2005 HUNTINGTON DRIVE
 SAN MARINO, CALIF. 91766
 BY *J. Hillerud*
 J. HILLERUD REG. CE 18233



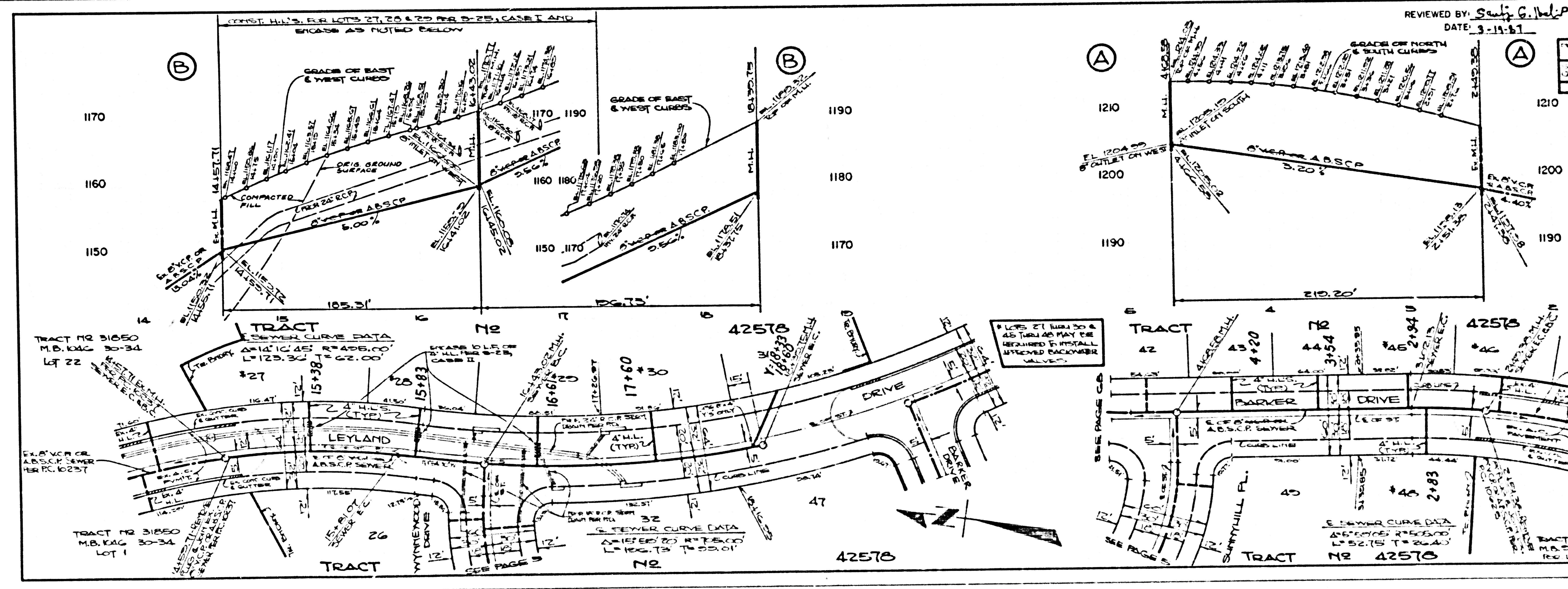
THE FOLLOWING LATEST REVISED STANDARD PLANS OR PARTS IN THE OFFICE OF THE DEPARTMENT OF PUBLIC WORKS SHALL APPLY TO THE CONSTRUCTION OF THIS PROJECT

LEGEND	NO.
MINIMUM PUBLIC SAFETY REQUIREMENTS	S-1
BRICK MANHOLE	S-2
STANDARD MANHOLE STEP	S-3
SETTING FOR SEWER PIPE	S-4
CRACKING AND ANCHORAGE	S-5
WYE OR TE SUPPORT	S-6
ALLOWABLE TRENCH WIDTH	S-7
LOCKING MANHOLE FRAME AND COVER	S-8
NON-REINFORCED PRECAST CONCRETE MANHOLE	S-9

53346

COUNTY OF LOS ANGELES, CALIFORNIA
 THOMAS A. TIDEMANSON, DIRECTOR
 DEPARTMENT OF PUBLIC WORKS
 APPROVED *Carl A. Brown* 3/19/87
 CHECKED *F. J. ...* 3/19/87
 REG. CE NO. 16841
 SAN DIMAS BLDG. DIST. 10

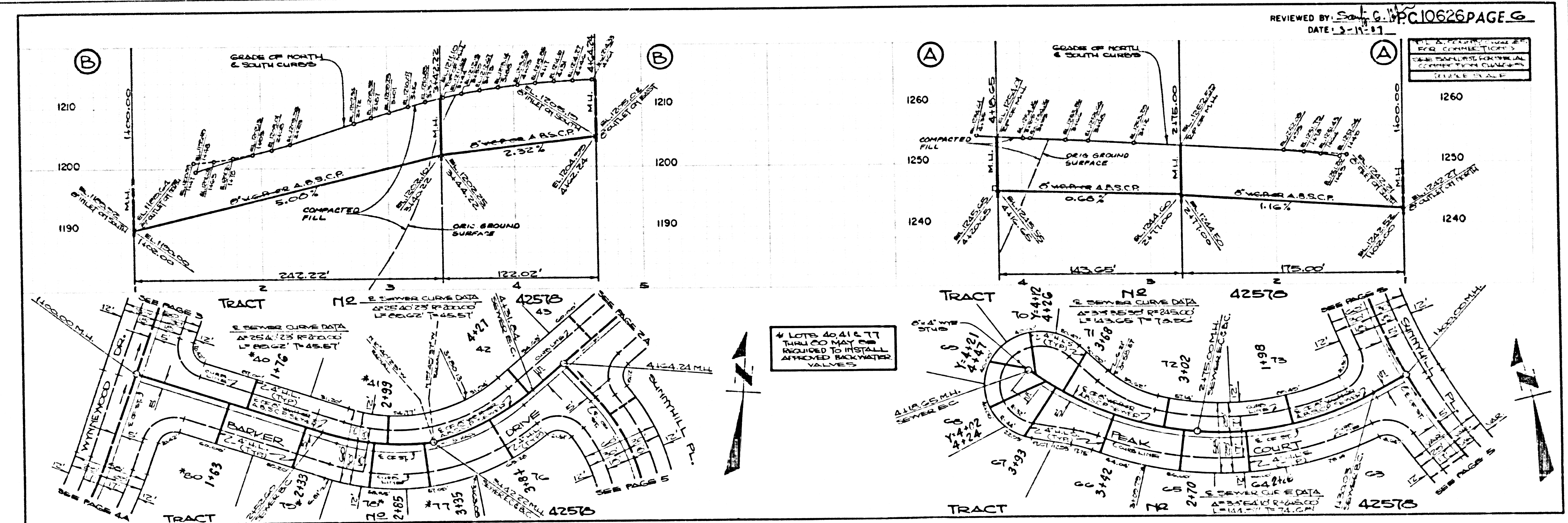
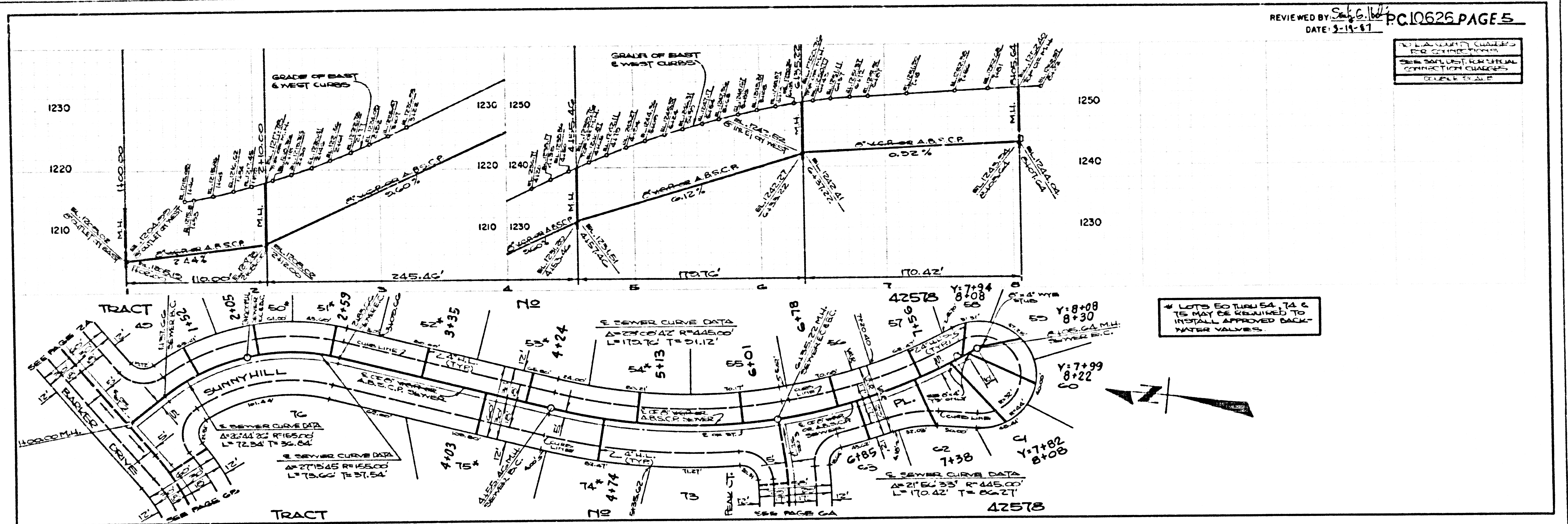
CHARLES W. CARRY, CHIEF ENGINEER
 CO. SAN. DIST. NO. 21
 APPROVED *Charles W. Carry* 3/19/87
 DATE 3/25/87



REVIEWED BY: *Scott G. ...* P.C. 10626 PAGE 2
 DATE: 3-19-87

TO L.A. COUNTY ENGINEER FOR CONNECTIONS
 SEE SECTION FOR MINIMUM DEFLECTION CHARACTERISTICS
 (SEE PAGE 10)

8725P.0M 10A.HI



3

89201 30

81034 011 10411