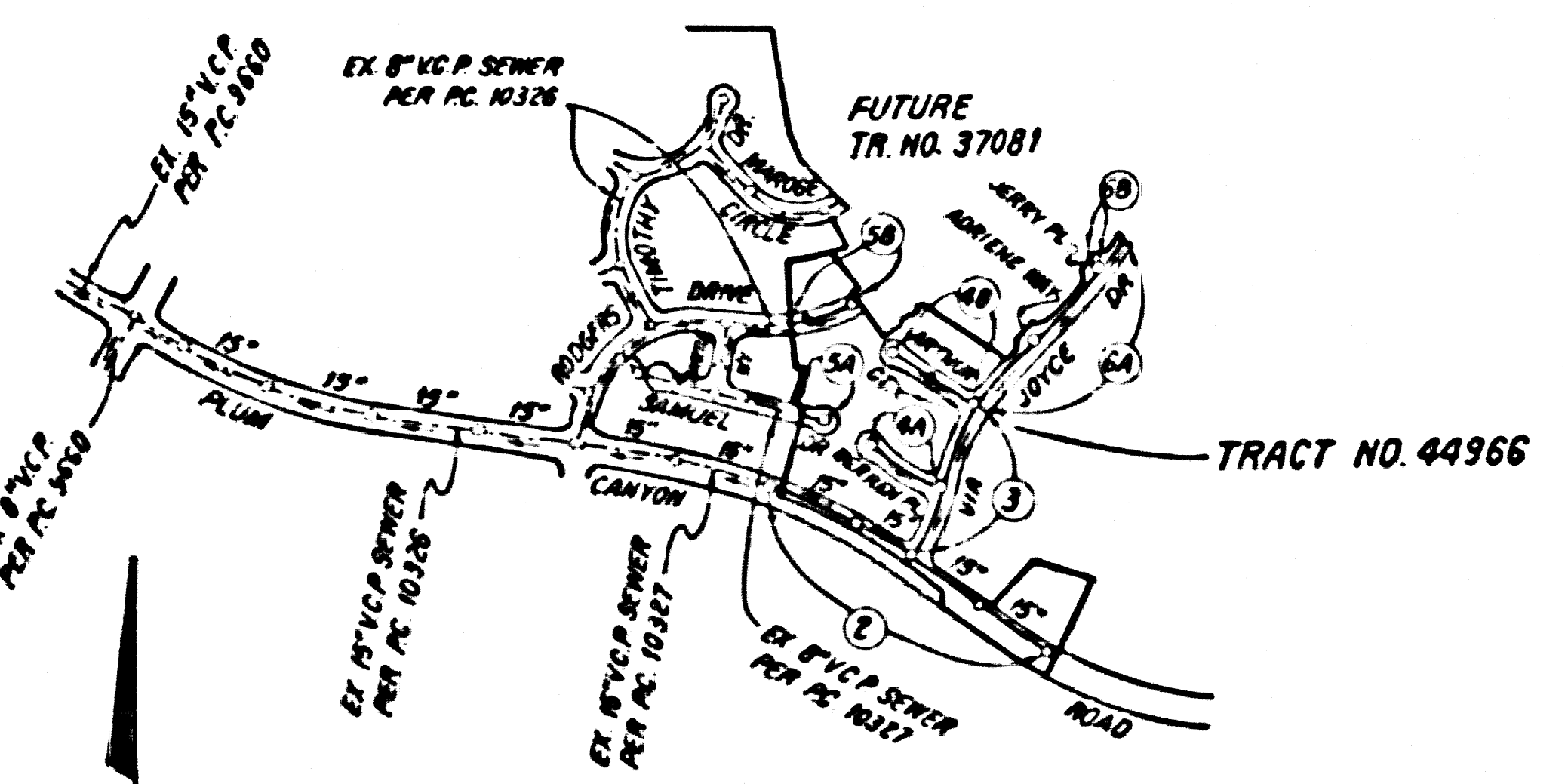


B.M. CL 3926 ELEV. 1376.696
 LACROD TAB IN C.B. 9 FT. SO. B.C.R. 35 FT.
 30.42 FT. W. C/L INT. & BOUQUET CYN.
 ROAD & STEVE JOY ST.
 NEWMALL QUAD. 19 83



INDEX MAP
 SCALE: 1"=600'
 P.C. 10627
 TRACT NO. 44966

NOTE: NUMBERS IN CIRCLES INDICATE PAGE NUMBERS

DOUBLE SCALE
CONSTRUCTION NOTES - CONT'D.
 NO FULL COMPLIANCE WITH PART IX OF THE SPECIAL PROVISIONS IS REQUIRED FOR THE INSTALLATION OF A B.S. COMPOSITE PIPE.
 1) MANHOLE WIPER STOP BASKETS AND CLAMPS ARE REQUIRED ON THE CONNECTION OF A B.S. COMPOSITE PIPE TO MANHOLE STRUCTURES.
 2) A D.S. SOLID WALL PIPE MUST BE USED FOR RYE AND HOUSE LATERAL CONNECTIONS TO A B.S. COMPOSITE MANHOLE SEWER PIPE.
 3) A B.S. COMPOSITE PIPE SHALL BE LAPPED BY COMPLIANCE WITH THE TABLE IN SECTION B-31 PART II OF THE SPECIAL PROVISIONS.
 4) 3 DEGREE DEFLECTION COUPLERS MUST BE USED TO ACCOMPLISH RIGIDS OF CURVATURE LESS THAN 380'.

REVISION NO 1 DATE: 11/11/88
 1) REVISE STORM DRAIN ALIGNMENT ON PAGE 2, 3, 4A, 4B, 6A AND 6B
 2) REVISE TO GRADE ON PAGE 4A
 3) REVISE TO GRADE AND H.L. ON PAGE 4B
 4) REVISE LOT LINE ON PAGE 5B
 5) REVISE STREET NAME FROM CHAROLYN DRIVE TO VIA JOYCE DRIVE ON PAGE 1, 2, 3, 4A, 4B, 6A & 6B (FROM ADRIENNE DAVE TO ADRIENNE MAY ON PAGE 1 & 6A)
 6) REVISE TR. BDRY. ON PAGE 1 AND 2)
 APPROVED: *Scott G. Galbraith* P.C.B. 33139
 DEPARTMENT OF PUBLIC WORKS 3-8-87

NO CONNECTION FOR THE DISPOSAL OF INDUSTRIAL WASTES SHALL BE MADE TO SEWERS SHOWING ON THESE DRAWINGS UNTIL A PERMIT FOR INDUSTRIAL WASTEWATER DISCHARGE HAS BEEN ISSUED BY THE SANITATION DISTRICTS FOR SAID CONNECTION.
 BEFORE BREAKING INTO OR CONSTRUCTION ON A COUNTY SANITATION DISTRICT SEWER AND PRIOR TO FINAL ACCEPTANCE OF THE PROJECT, SANITATION DISTRICT INSPECTOR SHALL BE NOTIFIED BY PHONE (818) 962-8605 SO THAT REQUIRED INSPECTION CAN BE MADE.

H.L. PERMIT FOR LOTS 19 TO BE ISSUED FROM P.C. 10327

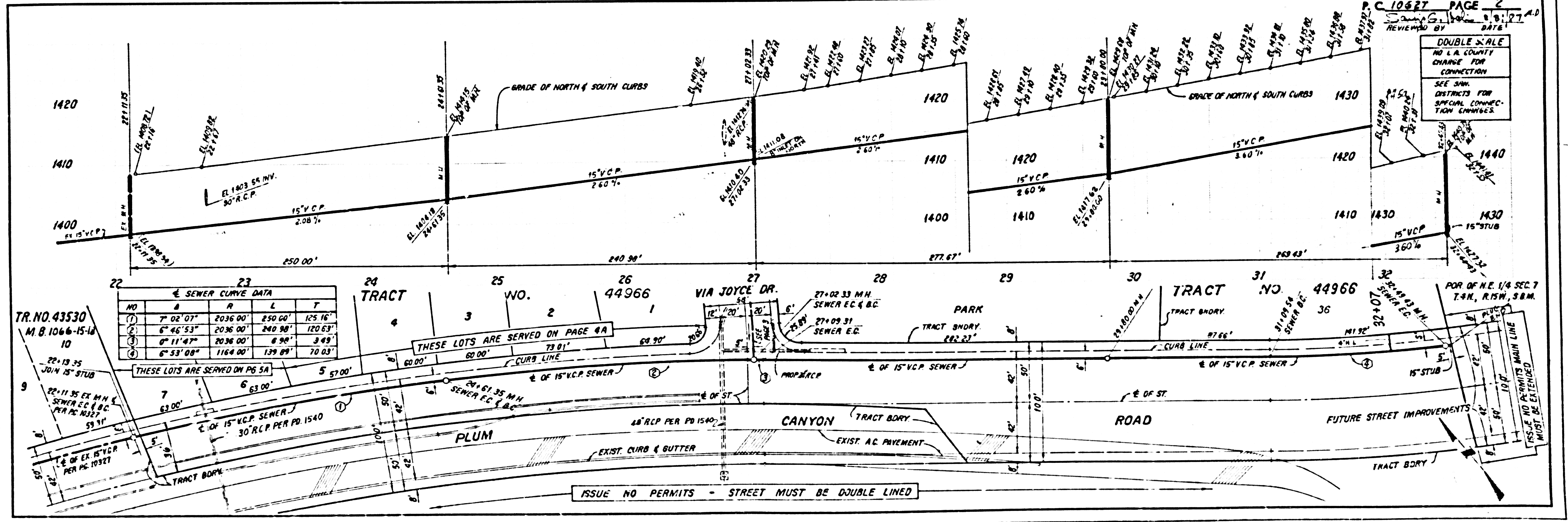
GENERAL NOTES:
 1) ELEVATIONS ARE IN FEET ABOVE U.S.C. & G.S. SEA LEVEL DATUM OF 1929.
 2) NO REVISIONS SHALL BE MADE IN THESE PLANS WITHOUT THE APPROVAL OF THE DIRECTOR OF PUBLIC WORKS.
 3) NO REPRESENTATIVE OF PUBLIC WORKS SHALL SURVEY OR LAY OUT ANY PORTION OF THE WORK.
 4) SIZES TO WHICH THIS IMPROVEMENT IS TO BE CONSTRUCTED ARE SHOWN ON PLANS AND PROFILES GRADE POINTS FOR TOP OF CURBS, CENTERLINE OF STREETS, CENTERLINE OF ALLEYS AND POINTS ON PROFILES AT ALL POINTS TO WHICH THE SCHEDULED POINTS THE WORK SHALL BE SET. UNLESS SO NOTED OTHERWISE BY THE CONTRACTOR.
 5) THE PRIVATE ENGINEER SHALL FURNISH THE DEPARTMENT OF PUBLIC WORKS WITH GRADE SHEETS AND STATIONING FOR ALL H.C., H.E. LATERALS AND "D" L.P. BRANCHES AND SHALL PROVIDE STAKES FOR THE H.C. AT THEIR PROPER LOCATIONS WITH THE STATIONING PLAINLY MARKED. ALL H.C. LATERALS SHALL BE CONSTRUCTED TO A STRAIGHT ALIGNMENT AT RIGHT ANGLES FROM THE MAIN LINE SEWER UNLESS SHOWN ON THE PLANS. HOUSE LATERALS BRANCHES SHALL NOT BE AN ANGLE OF LESS THAN 45° WITH THE MAIN LINE SEWER AND CHANGE IN ALIGNMENT SHALL BE INDICATED IN WRITING BY THE PRIVATE ENGINEER.
 6) THE PRIVATE ENGINEER SHALL FURNISH THE HOUSE LATERAL DEPTH AT THE PROPERTY LINE BELOW THE TOP OF CURB ELEVATION FOR EACH HOUSE LATERAL ON THE GRADE SHEET.
 7) BEFORE WORK CAN BE STARTED, THE CONTRACTOR MUST OBTAIN A PERMIT TO "CARRY IN COUNTY STREETS FROM THE COUNTY DIV. OF PUBLIC WORKS AND THE DEPARTMENT OF PUBLIC WORKS. PERMIT SPACE NO. 8-11 AND PAY A FEE TO THE DIRECTOR OF PUBLIC WORKS. AS SET FORTH IN LOS ANGELES CALIFORNIA 88888 TO COVER THE COST OF CONSTRUCTION INSPECTION AND RECORD PLANS.
 8) IF WORK IS TO BE DONE IN A STATE HIGHWAY A PERMIT MUST BE OBTAINED FROM THE STATE OF CALIFORNIA DIVISION OF HIGHWAYS 1-12 SOUTH SPRING STREET LOS ANGELES CALIFORNIA.
 9) APPROVAL OF THIS PLAN BY THE COUNTY OF LOS ANGELES DOES NOT CONSTITUTE A REPRESENTATION AS TO THE ACCURACY OF THE LOCATION OR THE EXISTENCE OR NON-EXISTENCE OF ANY UNDERGROUND AND UTILITY PIPE, OR STRUCTURE WITHIN THE LIMITS OF THIS PROJECT. THIS NOTE APPLIES TO ALL PAGES.
 10) REFER TO SECTION 716.1 OF THE STANDARD SPECIFICATIONS REGARDING SAFETY ORDERS.
 11) PRIOR TO THE BEGINNING OF THE REQUIRED SEWER CONSTRUCTION PERMIT THE CONTRACTOR SHALL OBTAIN AND FILL WITH THE DEPARTMENT OF PUBLIC WORKS COPIES OF A PERMIT TO EXCAVATE IN COUNTY STREETS FROM THE COUNTY DIV. AT THE DEPARTMENT OF PUBLIC WORKS A PERMIT FOR EXCAVATION AND TRENCHES FROM THE STATE OF CALIFORNIA AT A WORKER INDUSTRIAL SAFE AND HEALTH CERTIFICATE OF WORKERS COMPENSATION INSURANCE WITH THE DEPARTMENT OF PUBLIC WORKS. ALIQUOTING SEE LOS ANGELES CALIFORNIA 88888 SEE 88888 NAMED AS THE CERTIFICATE HOLDER TO BE NOTIFIED 30 DAYS PRIOR TO CANCELLATION OF POLICY.

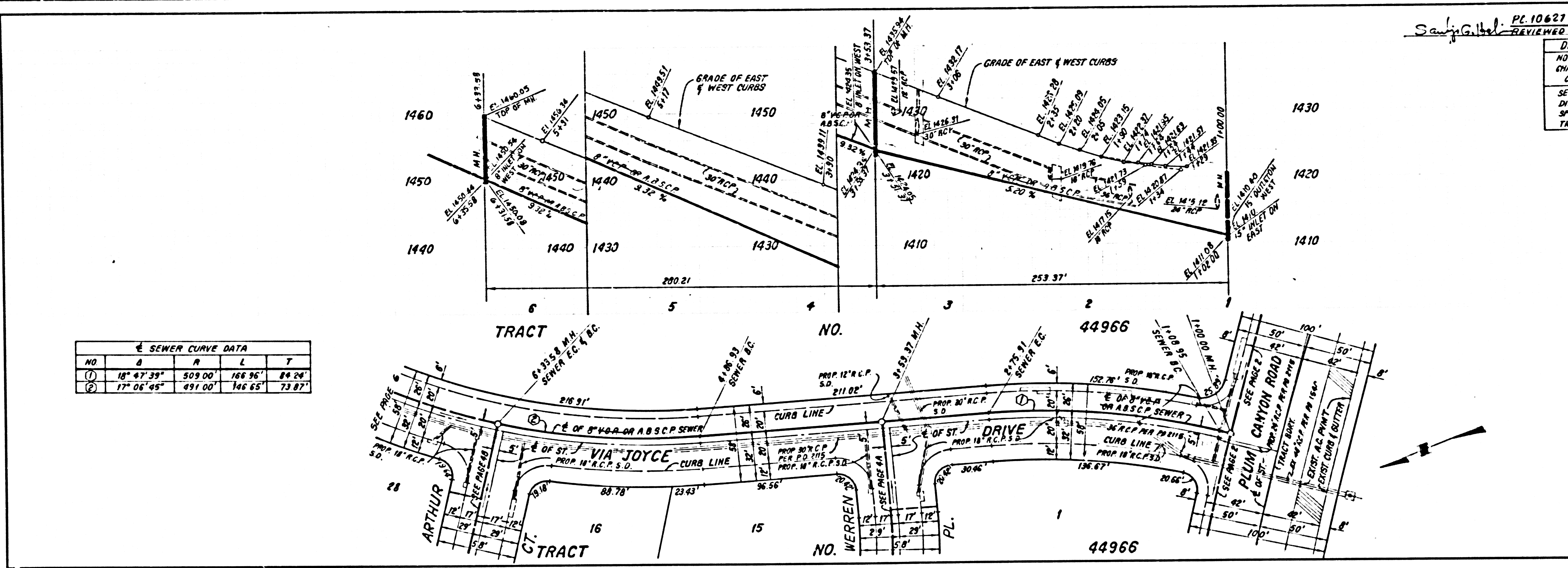
CONSTRUCTION NOTES:
 1) WORK SHALL BE CONSTRUCTED ACCORDING TO THE STANDARD SPECIFICATIONS FOR PUBLIC WORKS CONSTRUCTION (1988 EDITION WITH 1989 SUPPLEMENTS) AND COUNTY ENGINEER SPECIAL PROVISIONS FOR THE CONSTRUCTION OF SANITARY SEWER, DATED 11/11/88. ALL WORK SHALL BE CONSTRUCTED IN THE PRESENCE OF THE INSPECTOR OF PUBLIC WORKS.
 2) THE CONTRACTOR SHALL NOTIFY THE CONSTRUCTION DIVISION BY TELEPHONE 229-2321 AT LEAST TWENTY-FOUR HOURS BEFORE START OF ANY WORK UNDER THIS CONTRACT.
 3) HOUSE LATERALS TO BE CONSTRUCTED WITH INVERTS AT PROPERTY LINE 8 FEET BELOW CURB GRADE EXCEPT AS NOTED.
 4) RYE OR TEE BRANCHES MAY BE USED FOR CONNECTIONS TO MAINLINE SEWERS EXCEPT AS NOTED.
 5) ALL STRUCTURES SHALL BE EITHER BRICK MANHOLES PER 8-3 OR PRECAST CONCRETE MANHOLES PER 8-3B EXCEPT AS NOTED.
 6) PROPOSED STAKES ON THE PROPERTY LINE OR PROPERTY LINES PROVIDED AT RIGHT ANGLES TO THE SEWER LINE AT THE CENTERLINE OF EACH MANHOLE.
 7) MANHOLE TOPS IN UNIMPROVED AREAS OF WAY TO BE 6 INCHES ABOVE FINISHED GRADE.
 8) WETTED CLAY PIPE JOINTS SHALL BE TYPE "D" OR "E" PER STANDARD SPECIFICATION SECTION 200-2.
 9) IF A POWER POLE IS WITHIN THREE FEET OF THE SEWER THE SEWER SHALL BE ENCASED PER 8-23 CASE H TWO FEET ON EACH SIDE FROM THE POINT OF INTERFERENCE.
 10) IF DURING THE COURSE OF CONSTRUCTION IT IS DETERMINED THAT THERE IS LESS THAN FOUR FEET OF COVER OVER THE TOP OF A MAIN LINE OR HOUSE LATERAL V.C.P. SEWER WHICH IS NOT INDICATED ON THE PLANS, THE PIPE SHALL BE ENCASED PER 8-23 CASE H UNLESS OTHERWISE APPROVED BY THE DIRECTOR OF PUBLIC WORKS.
 11) ALL JOINTS IN THREE CAST IRON PIPE AND WETTED CLAY PIPE SHALL BE MADE WITH A RUBBER BUSH JOINT TYPE "D" OR "E" WITH BUSHING IN PLACE PER 8-3 STANDARD SPECIFICATIONS SECTION 200-2.
 12) SEWERS TO BE TESTED FOR LEAKAGE PER SECTION 200-1.4 OF THE STANDARD SPECIFICATIONS AND SPECIAL PROVISIONS.
 13) RESURFACE ALL TRENCHES WITHIN PAVED AREAS TO MEET LOS ANGELES COUNTY PUBLIC WORKS OR CALIFORNIA STATE HIGHWAY REQUIREMENTS IN ACCORDANCE WITH PERMITS.
 14) FULL COMPLIANCE WITH SECTION 200-1.3 OF THE STANDARD SPECIFICATIONS WILL BE REQUIRED FOR BACKFILL IN STREETS. CERTIFICATION OF BACKFILL COMPACTION AND SAND EQUIVALENTS BY A QUALIFIED REGISTERED TESTING LABORATORY SHALL BE PROVIDED BY THE PERMITTEE PRIOR TO THE ISSUANCE OF A LICENSE OF PARTIAL ACCEPTANCE.
 15) SPECIAL BACKFILL REQUIREMENT CONSTRUCTION IS BACKFILL TRENCH AND REPLACE OTHER EARTH SO AS TO ACHIEVE THE SAME UNIFORM FINISHED SURFACES AND SLOPES SHOWN ON THE GRADING PLAN APPROVED FOR THE DEVELOPMENT BY THE LAND DEVELOPMENT DIVISION. IN ALL BACKFILL AND EARTH REPLACED SHALL BE COMPACTED TO A MINIMUM OF 90% OF MAXIMUM DENSITY PER A T.M. 5 TO METHOD OF TEST D95 BY AN APPROVED ACCEPTABLE CERTIFICATION OF SUCH CONSTRUCTION SHALL BE SUBMITTED TO THE CONSTRUCTION DIVISION.

PROFILE ALIGNMENT AND GRADE OF **PAGE 1**
SANITARY SEWERS
 TO BE CONSTRUCTED IN
TRACT NO. 44966
PRIVATE CONTRACT NO. 10627
 INDEX: A-83, E-3
 3 SHEETS, 6 PAGES
 SCALE: HORIZ. 1"=80' VERT. 1"=8'
 MAY, 1987
 PREPARED IN THE OFFICES OF
SIRAND ENGINEERING ASSOCIATES
 15230 SUIBANK BLVD., VAN NUYS
 CALIFORNIA 91411 (818) 787-8550
 BY: *John W. Sirand* REG. C.E. NO. 9812
 (Seal of State of California, Civil Engineer, Exp. 11-31-88, 53408)

THE FOLLOWING LATEST REVISED STANDARD PLANS ON FILE IN THE OFFICE OF THE DEPARTMENT OF PUBLIC WORKS SHALL APPLY TO THE CONSTRUCTION OF THIS PROJECT:
 LEASED
 MINIMUM PUBLIC SAFETY REQUIREMENTS 8-1
 BRICK MANHOLE 8-3
 STANDARD MANHOLE STEP 8-31
 BEDDING FOR SEWER PIPE 8-31
 CRACKING AND ENCASEMENT 8-23
 RYE OR TEE SUPPORT 8-28
 ALLOWABLE TRENCH WIDTHS 8-28
 LOCKING MANHOLE FRAME AND COVER 8-38
 NON-REINFORCED PRECAST CONCRETE MANHOLE 8-38

COUNTY OF LOS ANGELES, CALIFORNIA
 THOMAS A. TIDEMANSON DIRECTOR OF PUBLIC WORKS
 CHARLES W. CARRY CHIEF ENGINEER
 APPROVED *Carl A. Sirand* 9/2/87 APPROVED *John W. Sirand* 9/2/87
 CHECKED *John W. Sirand* 9/6/87
 REG. C.E. NO. 16141
 SANTA CLARITA BLDG. DIST. 82



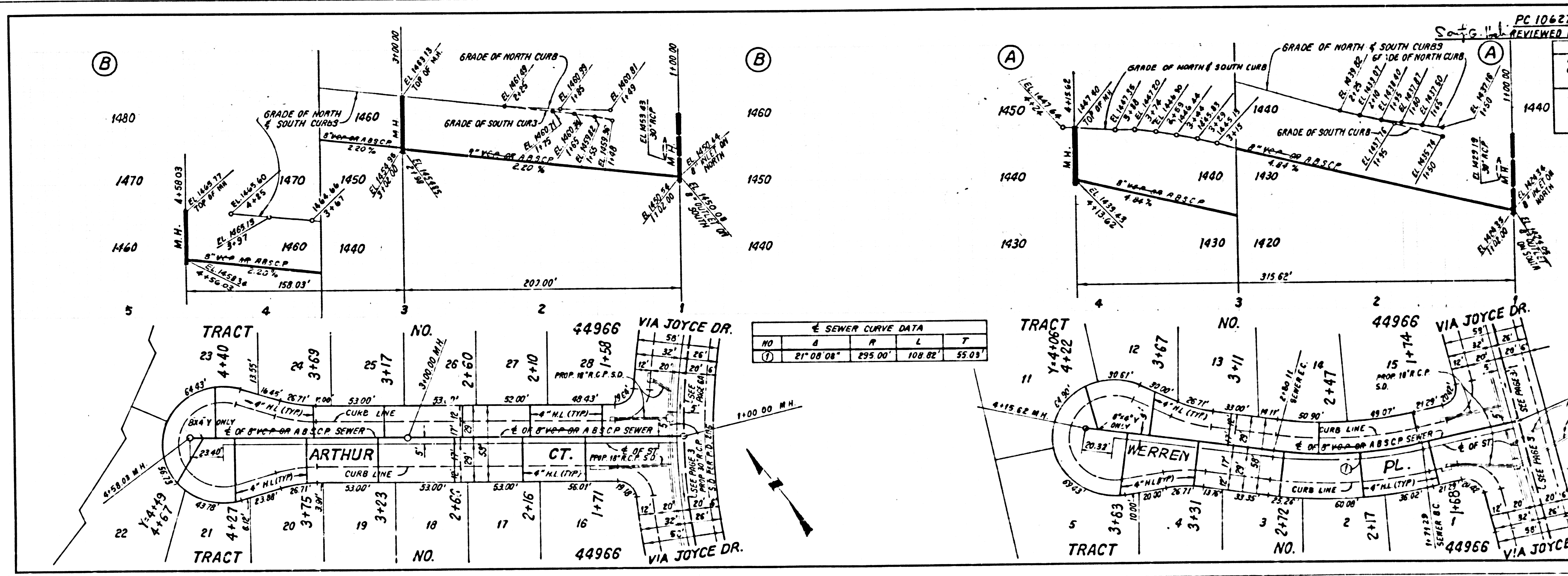


SEWER CURVE DATA

NO.	Δ	R	L	T
(1)	18° 47' 33"	509.00'	166.96'	84.26'
(2)	17° 06' 45"	491.00'	166.65'	73.87'

PL 10627 PAGE 3
 REVIEWED BY: DATE: 3/1/11
 DOUBLE SCALE
 NO L.A. COUNTY CHARGE FOR CONNECTION
 SEE SAN. DISTRICTS FOR SPECIAL CONNECTION CHARGES

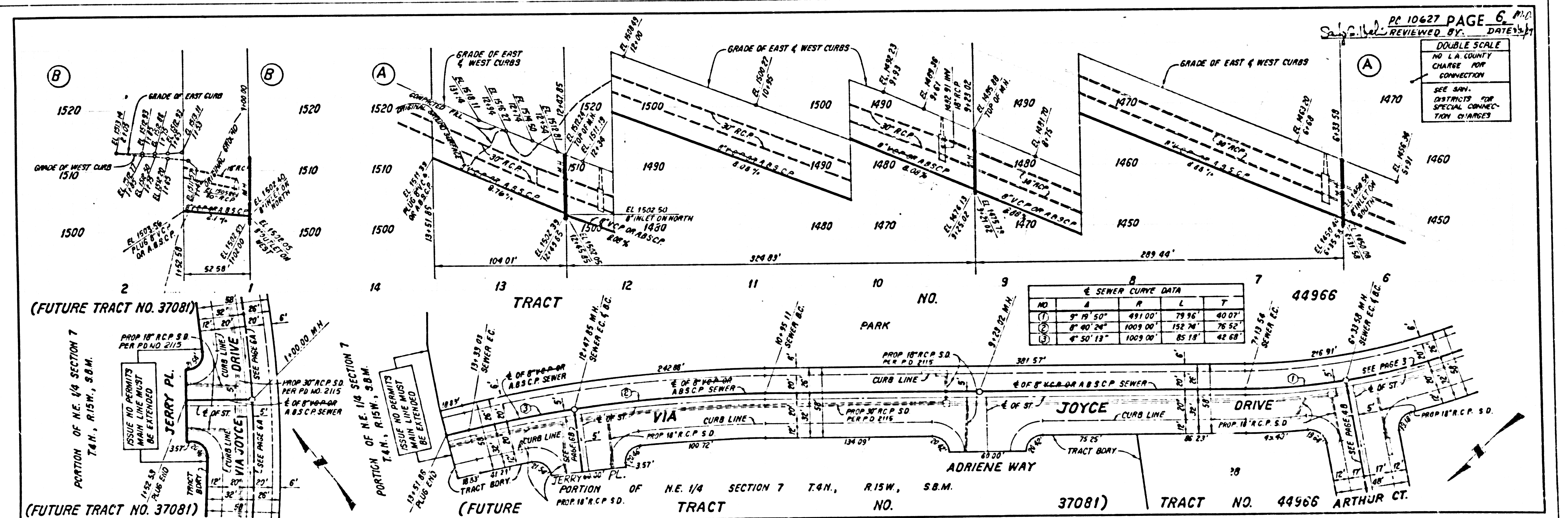
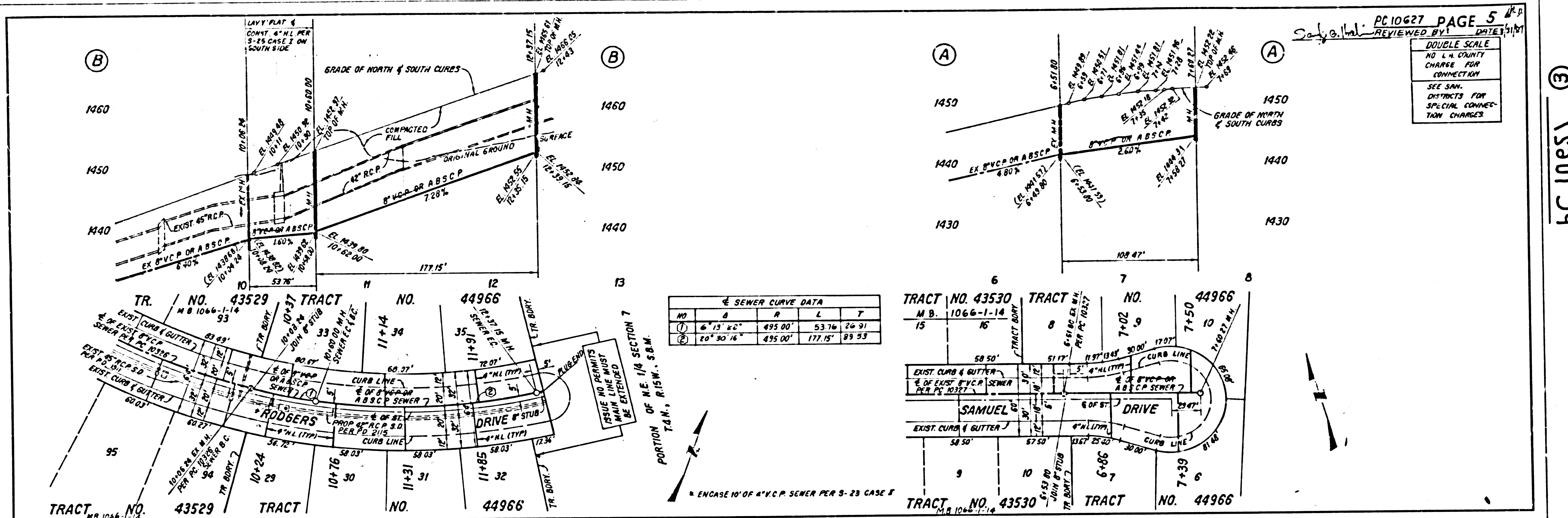
BC 10627



SEWER CURVE DATA

NO.	Δ	R	L	T
(1)	21° 08' 08"	295.00'	108.82'	55.03'

PL 10627 PAGE 4
 REVIEWED BY: DATE: 3/1/11
 DOUBLE SCALE
 NO L.A. COUNTY CHARGE FOR CONNECTION
 SEE SAN. DISTRICTS FOR SPECIAL CONNECTION CHARGES



CS01 29