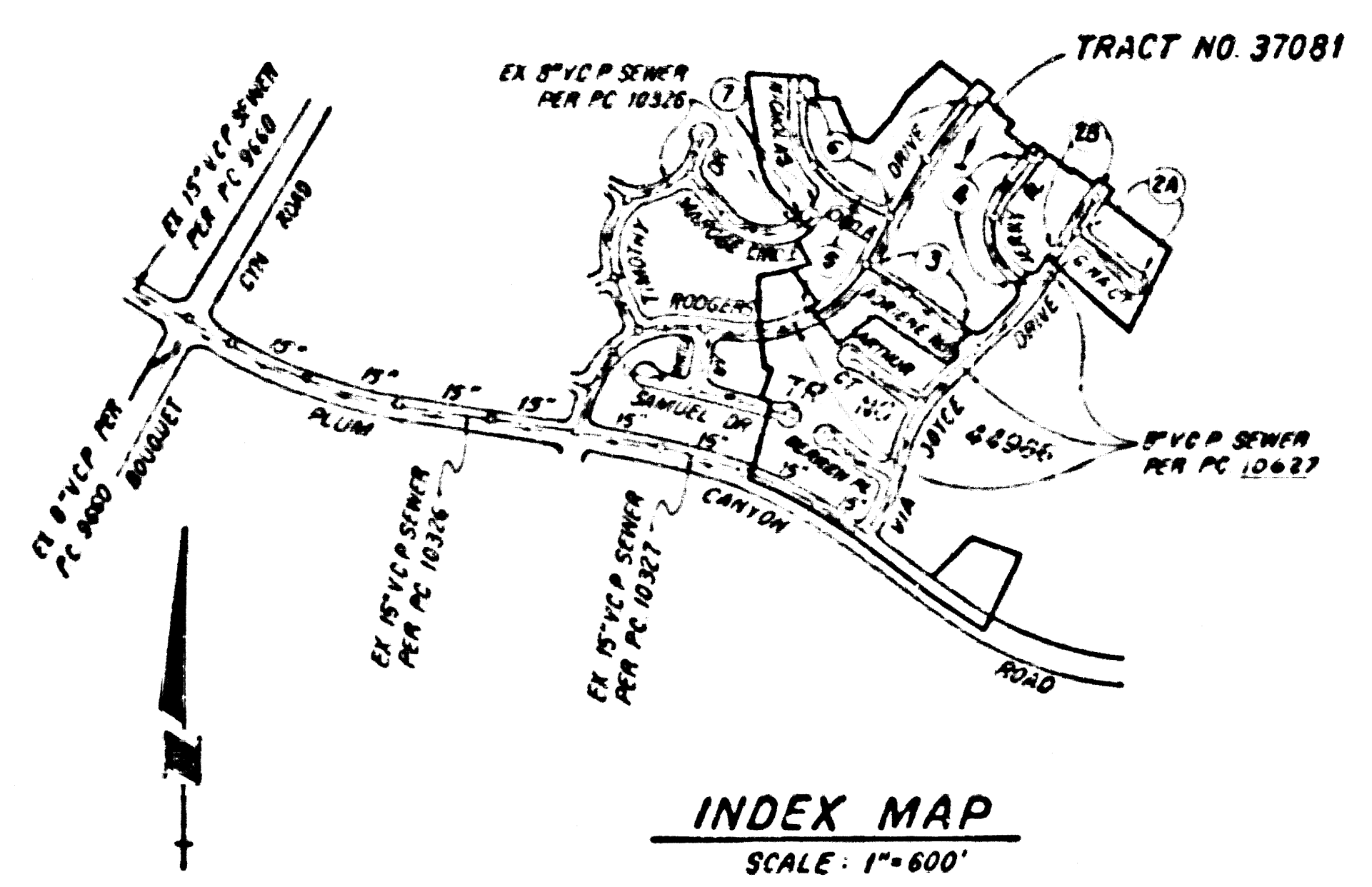


B.M. CL 3926 ELEV. 1374.696
 LACROD TAG IN CB 9 FT SO B.C.N 55 FT
 50' x 42 FT W.C. INT. & BOUQUET CTN
 ROAD & STEVE JOY ST
 NEWHALL QUAD. 19.83



INDEX MAP
 SCALE: 1"=600'
 P.C. 10628
 TRACT NO. 37081

NOTE: NUMBERS IN CIRCLES INDICATE PAGE NUMBERS

DOUBLE SCALE

CONSTRUCTION NOTES: CONT'D.
 1. FULL COMPLIANCE WITH PART 10 OF THE SPECIAL PROVISIONS IS REQUIRED FOR THE INSTALLATION OF A B.S. COMPOSITE PIPE.
 2. MANHOLE WATER STOP BOARDS AND CLAMPS ARE REQUIRED FOR THE CONNECTION OF A.B.S. COMPOSITE PIPE TO MANHOLE STRUCTURES.
 3. A.B.S. SOLID WALL PIPE MUST BE USED FOR WYE AND HOUSE LATERAL CONNECTIONS TO A.B.S. COMPOSITE MAINLINE SEWER PIPE.
 4. A.B.S. COMPOSITE PIPE SHALL BE DECIDED IN CONFORMANCE WITH THE TABLE IN SECTION 10-1.1, PART 10 OF THE SPECIAL PROVISIONS.
 5. 3/4" CURVE DEFLECTION COEFFICIENTS MUST BE USED TO ACCOMPLISH RADIUS OF CURVATURE LESS THAN 7" FOR 8" M.L. SEWER.

REVISION NO. 1 DATE: 11/11/88
 1) REVISE STORM DRAIN ALIGNMENT ON PAGE 20, 3, 4, 5, 6 AND 7.
 2) REVISE TRACT BOUNDARY AND PROFILE FROM STA 15+00 TO 16+75.00 ON PAGE 28.
 3) REVISE LOT LINES ON PAGES 3.
 4) REVISE LOT LINES, H.L.'S AND PROFILE FROM STA 4+00.00 TO 7+25.00 ON PAGE 4.
 5) REVISE TRACT BOUNDARY AND PROFILE FROM STA 22+62.15 TO 24+75.00 ON PAGE 5.
 6) REVISE LOT LINES, TRACT BOUNDARY AND PROFILE FROM STA 4+20.00 TO 8+12.12 ON PAGE 6.
 7) CORRECT STREET NAME FROM TIMOTHY DRIVE TO NICHOLAS CIRCLE ON PAGE 7.
 8) REVISE STREET NAME FROM CAROLYN DRIVE TO WINDYCE DRIVE FROM NICHOLAS LANE TO NICHOLAS CIRCLE, FROM ADRIENE DR TO ADRIENE WAY.

APPROVED: [Signature] 3-8-89
 DEPARTMENT OF PUBLIC WORKS RUC 33,34

NO CONNECTION FOR THE DISPOSAL OF INDUSTRIAL WASTES SHALL BE MADE TO SEWERS SHOWN ON THESE DRAWINGS UNTIL A PERMIT FOR INDUSTRIAL WASTEWATER DISCHARGE HAS BEEN ISSUED BY THE SANITATION DISTRICTS FOR SAID CONNECTION.

BEFORE BREAKING INTO OR CONSTRUCTION ON A COUNTY SANITATION DISTRICT SEWER AND PRIOR TO FINAL ACCEPTANCE OF THE PROJECT, SANITATION DISTRICT INSPECTOR SHALL BE NOTIFIED BY PHONE (310) 962-9605 SO THAT REQUIRED INSPECTION CAN BE MADE.

GENERAL NOTES:

1. ALL STRUCTURES SHALL BE CONSTRUCTED TO THE STANDARD SPECIFICATIONS FOR THE STATE OF CALIFORNIA.
2. NO REVISIONS SHALL BE MADE TO THESE PLANS WITHOUT THE APPROVAL OF THE DIRECTOR OF PUBLIC WORKS.
3. NO REPRESENTATION OF THE DEPARTMENT OF PUBLIC WORKS WILL BE GIVEN ON ANY PORTION OF THE WORK.
4. GRADES TO WHICH THIS IMPROVEMENT IS TO BE CONSTRUCTED ARE SHOWN ON PLANS AND PROFILES. GRADE POINTS FOR TOP OF CURBS, CENTRAL LINE OF STREETS, AND OTHER POINTS OF INTEREST ARE SHOWN ON PLANS AND PROFILES. GRADE POINTS FOR TOP OF CURBS, CENTRAL LINE OF STREETS, AND OTHER POINTS OF INTEREST ARE SHOWN ON PLANS AND PROFILES. GRADE POINTS FOR TOP OF CURBS, CENTRAL LINE OF STREETS, AND OTHER POINTS OF INTEREST ARE SHOWN ON PLANS AND PROFILES.
5. THE PRIVATE ENGINEER SHALL FURNISH THE DEPARTMENT OF PUBLIC WORKS WITH THE TIME AND STAFFING FOR ALL HOUSE LATERALS, AND FOR ALL HOUSE LATERALS AND MAINLINE SEWER PIPE TO BE CONSTRUCTED UNDER THIS CONTRACT. THE PRIVATE ENGINEER SHALL FURNISH THE DEPARTMENT OF PUBLIC WORKS WITH THE TIME AND STAFFING FOR ALL HOUSE LATERALS, AND FOR ALL HOUSE LATERALS AND MAINLINE SEWER PIPE TO BE CONSTRUCTED UNDER THIS CONTRACT.
6. THE PRIVATE ENGINEER SHALL FURNISH THE HOUSE LATERAL DEPTH AT THE PROPERTY LINE BELOW THE TOP OF CURB ELEVATION FOR EACH LOT TO BE SERVED BY THE SEWER LINE.
7. BEFORE WORK IS STARTED THE CONTRACTOR SHALL NOTIFY THE SANITATION DISTRICTS TO LOCATE ALL EXISTING SEWERS AND OTHER UTILITIES IN THE AREA OF THE PROJECT. THE CONTRACTOR SHALL BE RESPONSIBLE FOR THE PROTECTION OF ALL EXISTING UTILITIES AND STRUCTURES.
8. A PERMIT TO EXCAVATE IN THE STATE OF CALIFORNIA MUST BE OBTAINED FROM THE STATE OF CALIFORNIA DIVISION OF HIGHWAYS FOR ALL EXCAVATION WORK IN THE STATE OF CALIFORNIA.
9. APPROVAL OF THIS PLAN BY THE COUNTY OF LOS ANGELES DOES NOT CONSTITUTE A REPRESENTATION AS TO THE ACCURACY OF THE LOCATION OF EXISTING UTILITIES OR THE LOCATION OF EXISTING UTILITIES OR THE LOCATION OF EXISTING UTILITIES.
10. REFER TO SECTION 10-1.1 OF THE STANDARD SPECIFICATIONS FOR THE STATE OF CALIFORNIA.

CONSTRUCTION NOTES:

1. ALL STRUCTURES SHALL BE CONSTRUCTED TO THE STANDARD SPECIFICATIONS FOR THE STATE OF CALIFORNIA.
2. THE CONTRACTOR SHALL NOTIFY THE SANITATION DISTRICTS BY TELEPHONE 24 HOURS BEFORE START OF ANY WORK UNDER THIS CONTRACT.
3. HOUSE LATERALS TO BE CONSTRUCTED WITHIN PROPERTIES LINE 8 FEET BELOW CURB LINE UNLESS OTHERWISE NOTED.
4. WYE OR THE BRANCHES MAY BE USED FOR CONNECTIONS TO MAINLINE SEWERS AS NOTED.
5. ALL STRUCTURES SHALL BE CONSTRUCTED TO THE STANDARD SPECIFICATIONS FOR THE STATE OF CALIFORNIA.
6. PROTECT EXISTING UTILITIES AND STRUCTURES FROM DAMAGE BY THE CONSTRUCTION OF THE SEWER LINE.
7. MANHOLE TOPS UNIMPROVED HEIGHTS OF 4 FEET TO 5 FEET ABOVE FINISHED GRADE.
8. ATTACHED CLAY PIPE JOINTS SHALL BE TYPE OF PER STANDARD SPECIFICATIONS SECTION 10-1.1.
9. A 1/2" MINIMUM CLEARANCE SHALL BE MAINTAINED BETWEEN THE SEWER PIPE AND ANY EXISTING UTILITIES OR STRUCTURES.
10. IF DURING THE COURSE OF CONSTRUCTION IT IS DETERMINED THAT THERE IS LESS THAN FOUR FEET COVER OVER THE TOP OF A MAINLINE OR HOUSE LATERAL PIPE, THE CONTRACTOR SHALL BE RESPONSIBLE FOR PROVIDING THE ADDITIONAL COVER. THE CONTRACTOR SHALL BE RESPONSIBLE FOR PROVIDING THE ADDITIONAL COVER.
11. ALL JOINTS BETWEEN CAST IRON PIPE AND ATTACHED CLAY PIPE SHALL BE MADE WITH RUBBER SLEEVE JOINT TYPE C-10 WITH BUSHINGS OR NECESSARY PER STANDARD SPECIFICATIONS SECTION 10-1.1.
12. REFER TO THE STANDARD SPECIFICATIONS FOR THE STATE OF CALIFORNIA FOR THE STANDARD SPECIFICATIONS AND SPECIAL PROVISIONS.
13. REFER TO ALL NOTES ON THESE PLANS FOR THE STANDARD SPECIFICATIONS AND SPECIAL PROVISIONS.
14. REFER TO ALL NOTES ON THESE PLANS FOR THE STANDARD SPECIFICATIONS AND SPECIAL PROVISIONS.
15. REFER TO ALL NOTES ON THESE PLANS FOR THE STANDARD SPECIFICATIONS AND SPECIAL PROVISIONS.
16. FULL COMPLIANCE WITH SECTION 10-1.1 OF THE STANDARD SPECIFICATIONS FOR THE STATE OF CALIFORNIA IS REQUIRED FOR ALL STRUCTURES TO BE CONSTRUCTED UNDER THIS CONTRACT.
17. SPECIAL NOTES: ALL NECESSARY CONSTRUCTION SHALL BE IN ACCORDANCE WITH THE STANDARD SPECIFICATIONS FOR THE STATE OF CALIFORNIA. ALL NECESSARY CONSTRUCTION SHALL BE IN ACCORDANCE WITH THE STANDARD SPECIFICATIONS FOR THE STATE OF CALIFORNIA.

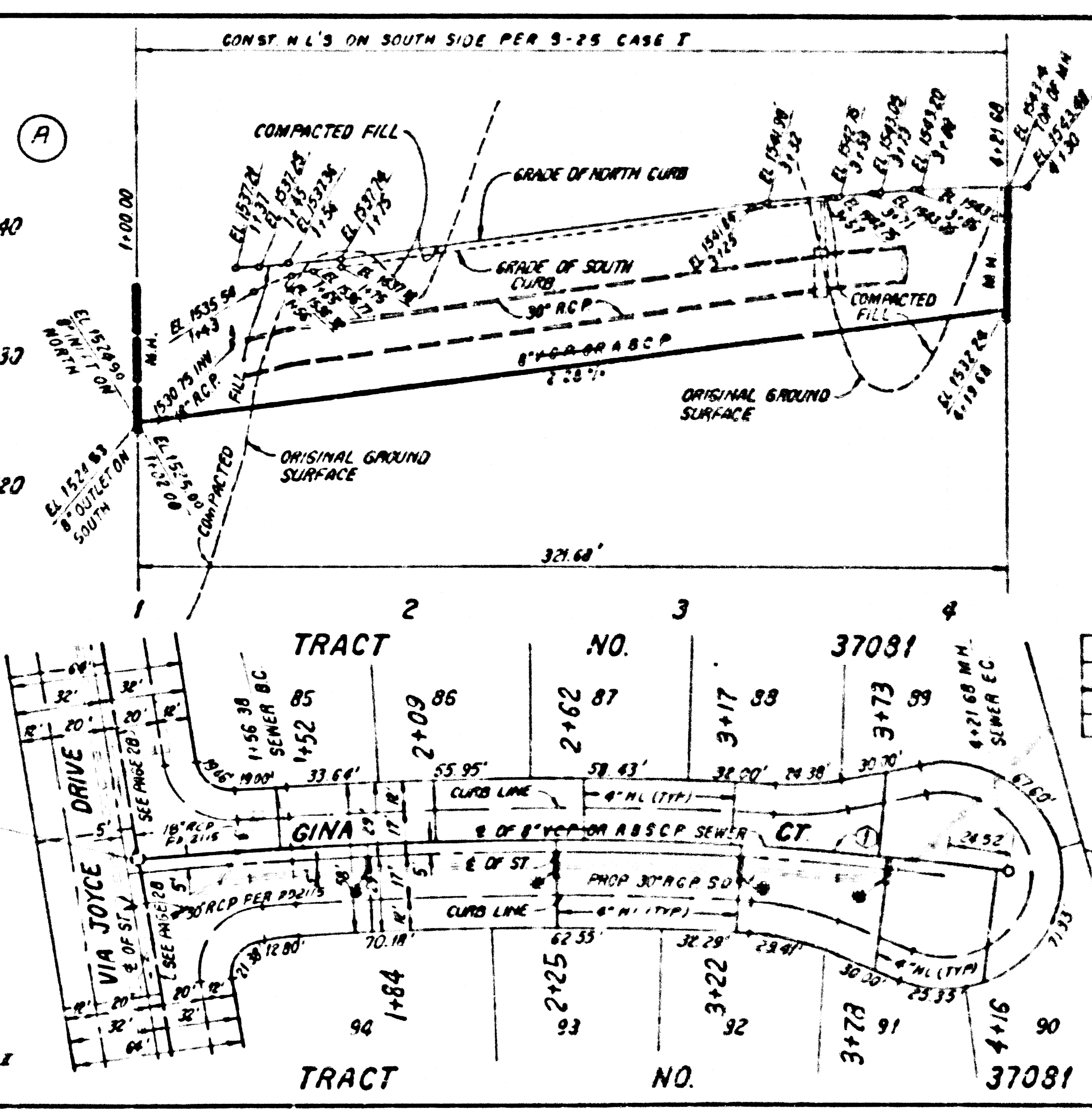
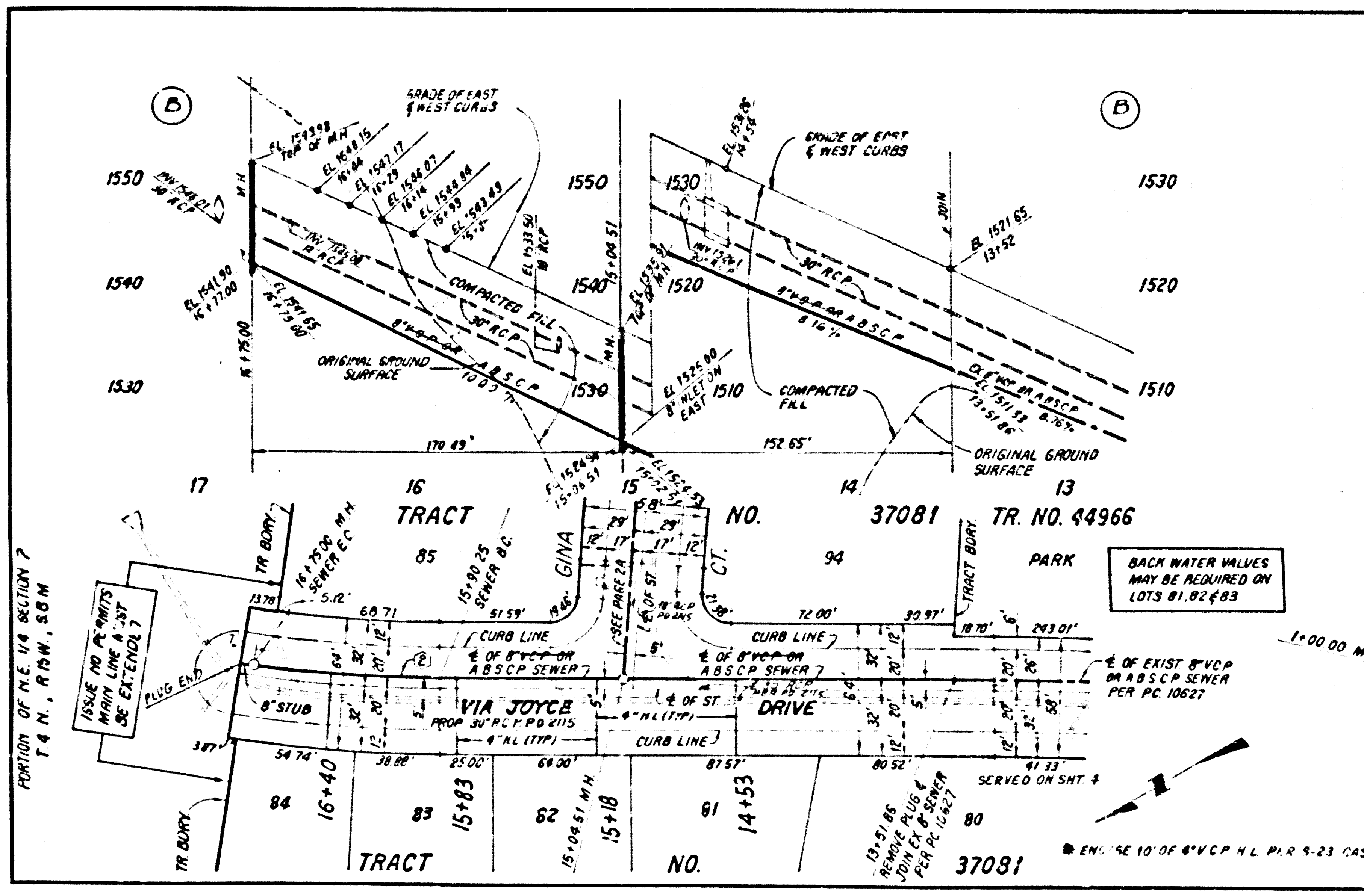
PROFILE ALIGNMENT AND GRADE UP
SANITARY SEWERS
 TO BE CONSTRUCTED IN
TRACT NO. 37081
PRIVATE CONTRACT NO. 10628
 INDEX A-83, E-3
 4 SHEETS, 7 PAGES

SCALE: 1"=100' (VERTICAL)
 MAY, 1987
 53406
 PREPARED IN THE OFFICES OF
SHAND ENGINEERING ASSOCIATES
 1200 B. BOYD BLVD. 14TH FLOOR
 LOS ANGELES, CALIF. 90017 (213) 787-9550
 REG. CE. NO. 3312

THE FOLLOWING LIST PREPARED STANDARD SPECIFICATIONS IN THE OFFICE OF THE DEPARTMENT OF PUBLIC WORKS SHALL APPLY TO THE CONSTRUCTION OF THIS PROJECT:

STANDARD SPECIFICATIONS FOR THE STATE OF CALIFORNIA	10-1.1
STANDARD SPECIFICATIONS FOR THE STATE OF CALIFORNIA	10-1.2
STANDARD SPECIFICATIONS FOR THE STATE OF CALIFORNIA	10-1.3
STANDARD SPECIFICATIONS FOR THE STATE OF CALIFORNIA	10-1.4
STANDARD SPECIFICATIONS FOR THE STATE OF CALIFORNIA	10-1.5
STANDARD SPECIFICATIONS FOR THE STATE OF CALIFORNIA	10-1.6
STANDARD SPECIFICATIONS FOR THE STATE OF CALIFORNIA	10-1.7
STANDARD SPECIFICATIONS FOR THE STATE OF CALIFORNIA	10-1.8
STANDARD SPECIFICATIONS FOR THE STATE OF CALIFORNIA	10-1.9
STANDARD SPECIFICATIONS FOR THE STATE OF CALIFORNIA	10-1.10
STANDARD SPECIFICATIONS FOR THE STATE OF CALIFORNIA	10-1.11
STANDARD SPECIFICATIONS FOR THE STATE OF CALIFORNIA	10-1.12
STANDARD SPECIFICATIONS FOR THE STATE OF CALIFORNIA	10-1.13
STANDARD SPECIFICATIONS FOR THE STATE OF CALIFORNIA	10-1.14
STANDARD SPECIFICATIONS FOR THE STATE OF CALIFORNIA	10-1.15
STANDARD SPECIFICATIONS FOR THE STATE OF CALIFORNIA	10-1.16
STANDARD SPECIFICATIONS FOR THE STATE OF CALIFORNIA	10-1.17
STANDARD SPECIFICATIONS FOR THE STATE OF CALIFORNIA	10-1.18
STANDARD SPECIFICATIONS FOR THE STATE OF CALIFORNIA	10-1.19
STANDARD SPECIFICATIONS FOR THE STATE OF CALIFORNIA	10-1.20
STANDARD SPECIFICATIONS FOR THE STATE OF CALIFORNIA	10-1.21
STANDARD SPECIFICATIONS FOR THE STATE OF CALIFORNIA	10-1.22
STANDARD SPECIFICATIONS FOR THE STATE OF CALIFORNIA	10-1.23
STANDARD SPECIFICATIONS FOR THE STATE OF CALIFORNIA	10-1.24
STANDARD SPECIFICATIONS FOR THE STATE OF CALIFORNIA	10-1.25
STANDARD SPECIFICATIONS FOR THE STATE OF CALIFORNIA	10-1.26
STANDARD SPECIFICATIONS FOR THE STATE OF CALIFORNIA	10-1.27
STANDARD SPECIFICATIONS FOR THE STATE OF CALIFORNIA	10-1.28
STANDARD SPECIFICATIONS FOR THE STATE OF CALIFORNIA	10-1.29
STANDARD SPECIFICATIONS FOR THE STATE OF CALIFORNIA	10-1.30

COUNTY OF LOS ANGELES, CALIFORNIA
 THOMAS A. TIDEMANSON, DIRECTOR OF PUBLIC WORKS
 CHARLES W. CARRY, CHIEF ENGINEER
 APPROVED: [Signature] 11/11/88
 CHECKED: [Signature] 11/11/88
 REG. CE. NO. 16121
 SANTA CLARITA BLDG. DIST. 88



P.C. 10628 PAGE 2
 REVIEWED BY [Signature] DATE: 11/11/88

DOUBLE SCALE
 NO. L.A. COUNTY
 CHARGE FOR
 CONNECTION
 SEE COUNTY 2-2
 DISTRICTS FOR
 SPECIAL CONNE-
 CTION CHARGES

PRIOR TO CONSTRUCTION
 OF PAGE 2B CONTRACTOR
 MUST VERIFY
 INVERT ELEVATION AT
 STA. 13+51.86

53406
 2

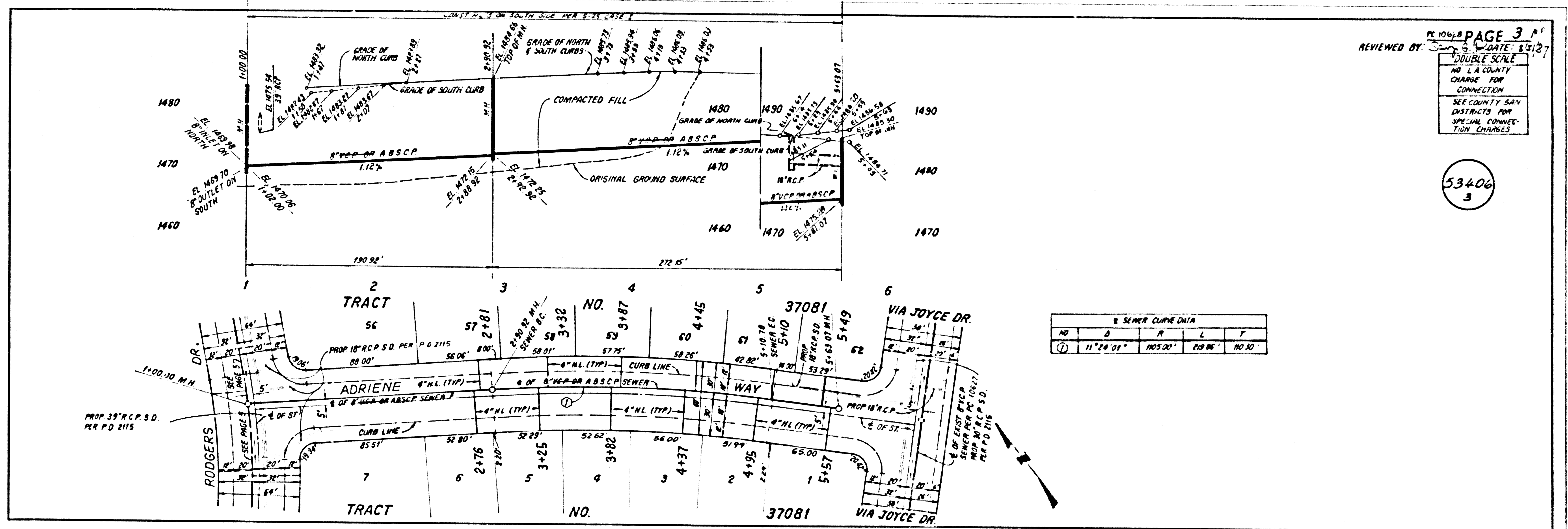
SEWER CURVE DATA

NO.	A	R	L	T
1	12° 36' 53"	1205.00	245.30	133.19
2	8° 13' 00"	591.00	84.75	42.75

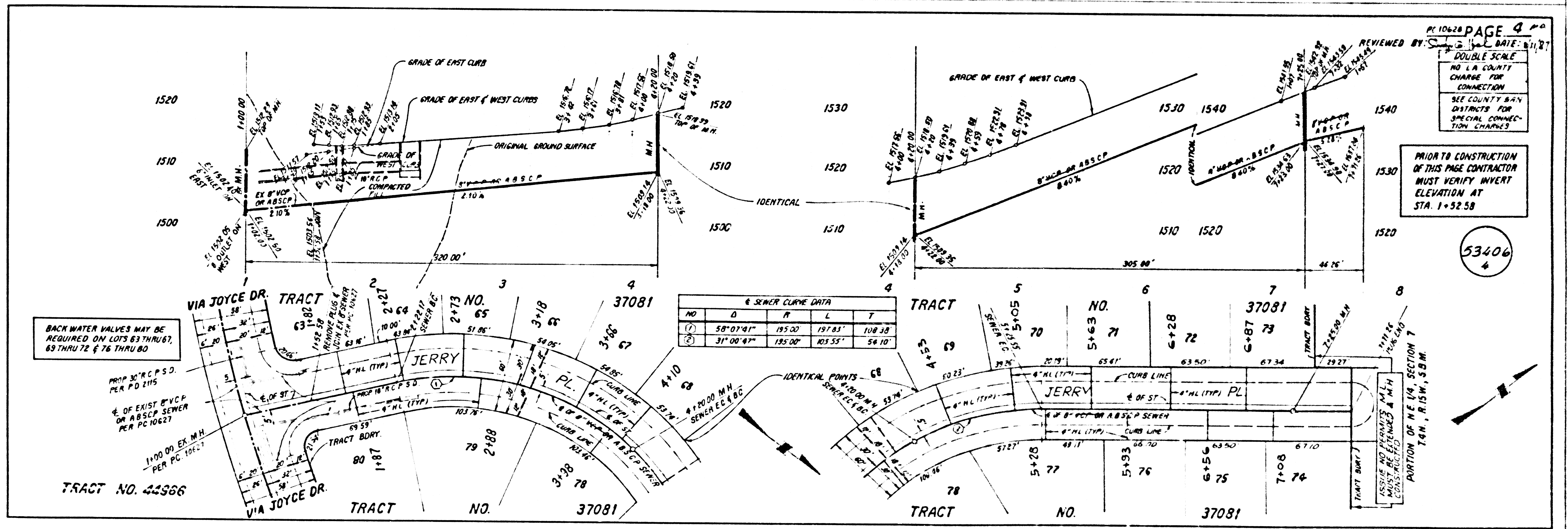
BACK WATER VALVES MAY BE
 REQUIRED ON LOTS 85, 86, 87,
 88 & 90.

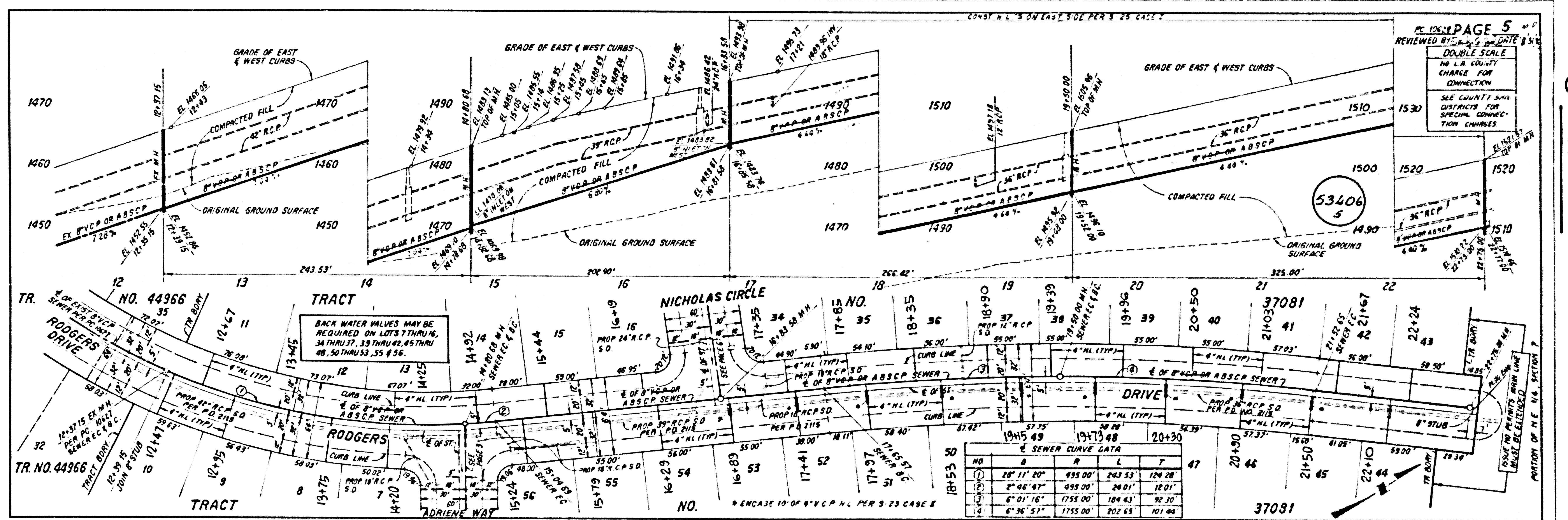
85 SA01 29

1807E, 0M, RT



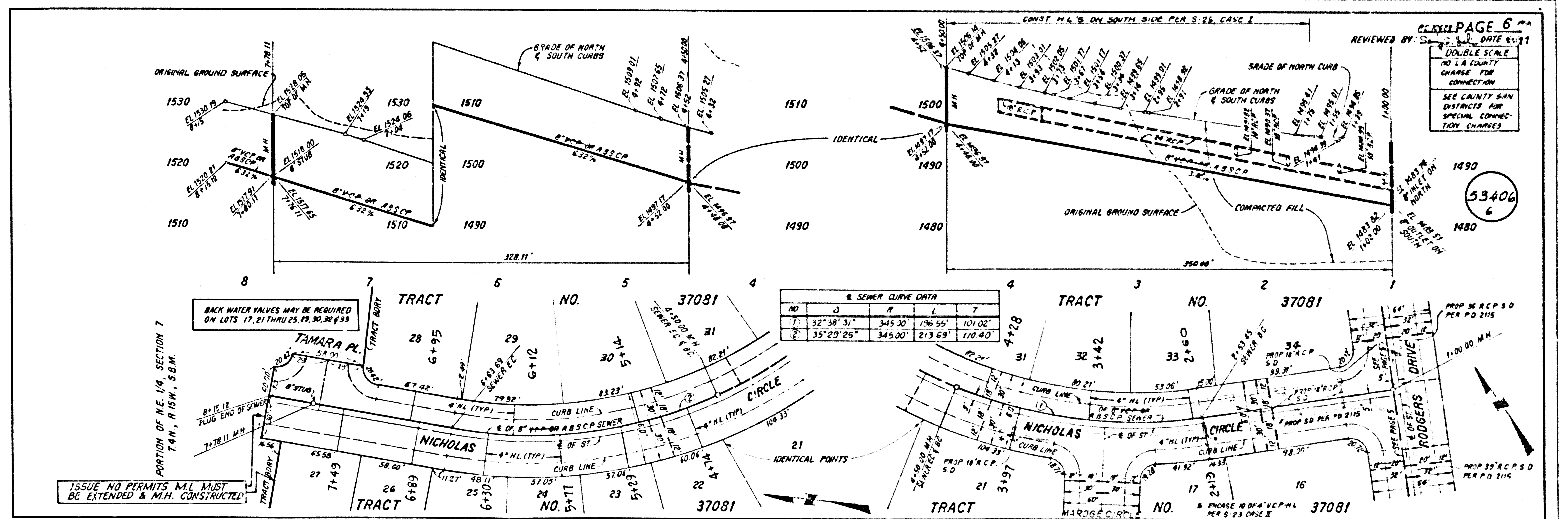
85201 29
 10618 3101
 10618 3101

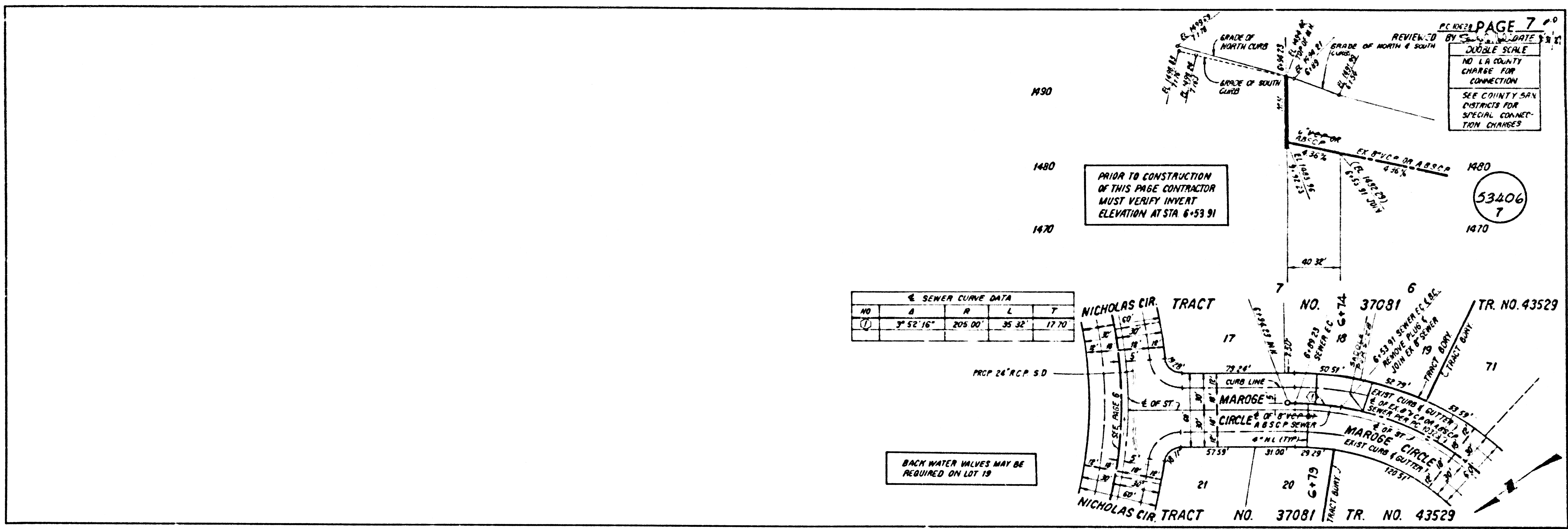




8520129

1807E 0W 9T





85201 29

18076 0M RT