

INDEX MAP
P.C. 10630 TRACT NO. 43724
SCALE 1" = 600'
 IN THE UNINCORPORATED TERRITORY OF THE COUNTY OF LOS ANGELES

CONSTRUCTION NOTES (CONT.):

16. TESTING PER LAS VIRGENES MUNICIPAL WATER DISTRICT
 - A. THE INSTALLATION OF LEAKAGE TESTS. METHOD USED FOR TESTING WILL BE THE SAME AS L.A. COUNTY EXCEPT THE FLOW TO BE USED IS AS FOLLOWS:
 - 0.033 GALLONS/MINUTE/INCH OF DIAMETER/ 1,000 FEET OR
 - 250 GALLONS/DAY/INCH O.D. DIAMETER/MILE
 - B. MANHOLE LEAKAGE TESTS. AT THE DISCRETION OF THE DISTRICT'S REPRESENTATIVE, ONE MANHOLE OUT OF EVERY TEN MANHOLES AND A MINIMUM OF TWO WILL BE FILLED WITH WATER & AFTER THREE HOURS WILL BE CHECKED FOR LEAKAGE WITH NO DROP IN LEVER THREE HOURS ONE MANHOLE NOT PASSING TESTS WILL BE TESTED AT THE DISCRETION OF THE DISTRICT'S REPRESENTATIVE.
 - C. AIR TESTING. WHERE THE DIFFERENCE IN ELEVATION BETWEEN THE TOP OF THE COVER OF THE LOWER STRUCTURE IS MORE THAN SIX FEET, AN AIR TEST WILL BE MADE.
17. THE TIME TAKEN TO LOSE ONE POUND PER SQUARE INCH GUAGE PRESSURE FROM THREE POUNDS PER SQUARE INCH GUAGE PRESSURE TO TWO POUNDS PER SQUARE INCH GUAGE PRESSURE SHALL NOT BE LESS THAN LISTED SHOWN ON THE FOLLOWING TABLE:

MAIN PIPE DIAMETER	MINIMUM TIME LOSS
8" - 14"	1 MINUTE
15" - 20"	5 MINUTES
21" - 30"	3 MINUTES
18. IF THE TIME IS LESS THAN LISTED IN THE TABLE ABOVE, THE CONTRACTOR SHALL MAKE SUCH REPAIRS NECESSARY TO ELIMINATE THE EXCESSIVE LEAKAGE.
19. FULL COMPLIANCE WITH PART IV OF THE SPECIAL PROVISIONS IS REQUIRED FOR THE INSTALLATION OF A.B.S. COMPOSITE PIPE.
20. MANHOLE WATER STOP GASKETS AND CLAMPS ARE REQUIRED FOR THE CONNECTION OF A.B.S. COMPOSITE PIPE TO MANHOLE STRUCTURES.
21. A.B.S. SOLID WALL PIPE MUST BE USED FOR VTE AND HOUSE LATERAL CONNECTIONS TO A.B.S. COMPOSITE MAINLINE SEWER PIPE.
22. A.B.S. COMPOSITE PIPE SHALL BE BEDDED IN CONFORMANCE WITH THE TABLE IN SECTION 9-1.1 OF PART IV OF THE SPECIAL PROVISIONS.
23. THREE DEGREE DEFLECTION COMPLIANCE IS REQUIRED FOR RADIUS OF CURVATURE LESS THAN 180 FEET WHEN USING 8" A.B.S. COMPOSITE PIPE.
24. NO CONNECTIONS FOR DISPOSAL OF INDUSTRIAL WASTE IS ALLOWED IF A.B.S. COMPOSITE PIPE IS USED.
25. SEWER LINE CURVATURE SHALL NOT BE ACHIEVED BY PULLING OF JOINTS OR BENDING PIPE ENDS WHEN USING PLASTIC PIPE INCLUDING A.B.S. COMPOSITE PIPE.
26. ALL VTE AND/OR HOUSE LATERALS ARE TO BE LOCATED AT LEAST FIVE FEET APART AND WHEN POSSIBLE NOT CLOSER THAN FIVE FEET TO ANY MANHOLE.
27. A.B.S. SOLID WALL PIPE IS NOT ACCEPTABLE FOR USE AS MAINLINE SEWER.
28. ONE VTE BRANCHES ARE TO BE USED FOR CONNECTION TO A.B.S. COMPOSITE MAINLINE SEWER PIPE.

NO HOUSE CONNECTIONS WILL BE MADE UNTIL A CONNECTION FEE IS PAID TO LAS VIRGENES MUNICIPAL WATER DISTRICT.

DOUBLE SCALE

GENERAL NOTES:

1. ELEVATIONS ARE IN FEET ABOVE SEA LEVEL UNLESS OTHERWISE NOTED.
2. NO REVISIONS SHALL BE MADE IN THESE PLANS WITHOUT THE APPROVAL OF THE DIRECTOR OF PUBLIC WORKS.
3. NO REPRESENTATIVE OF THE DEPARTMENT OF PUBLIC WORKS WILL SURVEY OR LAY OUT ANY PORTION OF THE WORK.
4. GRADES TO WHICH THIS IMPROVEMENT IS TO BE CONSTRUCTED ARE SHOWN ON PLANS AND PROFILES. GRADE POINTS FOR TOP OF CURBS, CENTERLINE OF STREETS, CENTERLINE OF ALLEYS ARE SHOWN BY CIRCLES ON PROFILES. ALL POINTS BETWEEN SAID DESIGNATED POINTS THE GRADE SHALL BE ESTABLISHED SO AS TO CONFORM TO A STRAIGHT LINE DRAWN BETWEEN SAID DESIGNATED POINTS.
5. THE PRIVATE ENGINEER SHALL FURNISH THE DEPARTMENT OF PUBLIC WORKS WITH GRADE SHEETS AND STATIONING FOR ALL HOUSE LATERALS AND 12" OR 18" BRANCHES AND SHALL PROVIDE STAKES FOR THEM AT THEIR PROPER LOCATIONS WITH STATIONING PLAINLY MARKED. ALL HOUSE LATERALS SHALL BE CONSTRUCTED IN A STRAIGHT ALIGNMENT AT RIGHT ANGLES FROM THE MAINLINE SEWER EXCEPT AS SHOWN ON THE PLANS. HOUSE LATERALS FROM CHIMNEYS SHALL NOT HAVE AN ANGLE OF LESS THAN 45° WITH THE MAINLINE SEWER. ANY CHANGE IN ALIGNMENT SHALL BE REQUESTED IN WRITING BY THE PRIVATE ENGINEER.
6. THE PRIVATE ENGINEER SHALL FURNISH THE HOUSE LATERAL DEPTH AT THE PROPERTY LINE BELOW THE TOP OF CURB ELEVATION FOR EACH HOUSE LATERAL ON THE GRADE SHEET.
7. BEFORE WORK CAN BE STARTED THE CONTRACTOR MUST OBTAIN A PERMIT TO EXCAVATE IN COUNTYS STREETS FROM THE COMST. DIVISION OF THE LOS ANGELES DEPARTMENT OF PUBLIC WORKS. PERMIT OFFICE NO. 8 AND PAY A FEE TO THE DIRECTOR OF PUBLIC WORKS, 2350 ALCAZAR ST. LOS ANGELES, CALIFORNIA 90004 TO COVER THE COST OF CONSTRUCTION INSPECTION AND RECORD PLANS.
8. IF WORK IS TO DO IN A STATE HIGHWAY A PERMIT MUST BE OBTAINED FROM THE STATE OF CALIFORNIA DIVISION OF HIGHWAYS, LOS SOUTHWEST SPRING STREET, LOS ANGELES, CALIFORNIA.
9. APPROVAL OF THIS PLAN BY THE COUNTY OF LOS ANGELES DOES NOT CONSTITUTE A REPRESENTATION AS TO THE ACCURACY OF THE LOCATION OF OR THE EXISTENCE OR NON-EXISTENCE OF ANY UNDERGROUND UTILITY PIPE, OR STRUCTURE WITHIN THE LIMITS OF THIS PROJECT. THIS NOTE APPLIES TO ALL PAGES.
10. REFER TO SECTION 7-10.1 OF THE STANDARD SPECIFICATIONS, REGARDING SAFETY ORDERS.
11. PRIOR TO THE ISSUANCE OF THE REQUIRED SEWER CONSTRUCTION PERMIT THE CONTRACTOR SHALL OBTAIN AND FILE WITH THE DEPARTMENT OF PUBLIC WORKS COPIES OF A PERMIT TO EXCAVATE IN COUNTYS STREETS FROM THE COMST. DIVISION OF THE DEPARTMENT OF PUBLIC WORKS. A PERMIT FOR EXCAVATIONS AND TRENCHES FROM THE STATE OF CALIFORNIA, DIVISION OF INDUSTRIAL SAFETY AND CERTIFICATE OF WORKERS COMPENSATION INSURANCE WITH THE DEPARTMENT OF PUBLIC WORKS, 2350 ALCAZAR ST. LOS ANGELES, CALIFORNIA 90004, ROOM 400, NAMED AS THE CERTIFICATE HOLDER IS TO BE NOTIFIED 30 DAYS PRIOR TO CANCELLATION OF POLICY.

CONSTRUCTION NOTES:

1. WORK SHALL BE CONSTRUCTED ACCORDING TO THE STANDARD SPECIFICATIONS FOR PUBLIC WORKS CONSTRUCTION 1988 EDITION WITH 1988 SUPPLEMENTS AND PART OF PUBLIC WORKS SPECIAL PROVISIONS FOR THE CONSTRUCTION OF SANITARY SEWERS DATED SEPT. 21, 1978, AND SHALL BE PROSECUTED ONLY IN THE PRESENCE OF THE DEPT. OF PUBLIC WORKS.
2. THE CONTRACTOR SHALL NOTIFY THE CONSTRUCTION DIVISION BY TELEPHONE, 228-8281, AT LEAST TWENTY-FOUR HOURS BEFORE STARTING ANY WORK UNDER THIS CONTRACT.
3. HOUSE LATERALS TO BE CONSTRUCTED WITH INVERTS AT PROPERTY LINE 8 FEET BELOW CURB GRADE EXCEPT AS NOTED.
4. VTE OR TEE BRANCHES MAY BE USED FOR CONNECTIONS TO MAINLINE SEWERS EXCEPT AS NOTED.
5. ALL STRUCTURES SHALL BE EITHER BRICK MANHOLES 36" OR 48" PRECAST CONCRETE MANHOLES PER 538, EXCEPT AS NOTED.
6. PROVIDE STAKES ON THE PROPERTY LINE OR PROPERTY LINES PRODUCED AT RIGHT ANGLES TO THE SEWER LINE AT THE CENTERLINE OF EACH MANHOLE.
7. MANHOLE TOPS IN UNIMPROVED RIGHTS OF WAY TO BE SIX INCHES ABOVE FINISHED GRADE.
8. WITHIN 4 FEET OF THE SEWER LINE THE SEWER SHALL BE ENCASED PER 523, CASE 1, TWO FEET ON EACH SIDE FROM THE POINT OF INTERFERENCE.
9. IF A POWER POLE IS WITHIN THREE FEET OF THE SEWER THE SEWER SHALL BE ENCASED PER 523, CASE 2, TWO FEET ON EACH SIDE FROM THE POINT OF INTERFERENCE.
10. IF DURING THE COURSE OF CONSTRUCTION IT IS DETERMINED THAT THERE IS LESS THAN FOUR FEET OF COVER OVER THE TOP OF A MAINLINE OR HOUSE LATERAL VTE SEWER WHICH IS NOT INDICATED ON THE PLANS, THE PIPE SHALL BE ENCASED PER 523, CASE II UNLESS OTHERWISE APPROVED BY THE DIRECTOR OF PUBLIC WORKS.
11. ALL JOINTS BETWEEN CAST IRON PIPE AND WITHIN CLAY PIPE SHALL BE MADE WITH A RUBBER SLEEVE JOINT, TYPE "C" OR "D" WITH RUSHING IF NECESSARY PER STANDARD SPECIFICATIONS SECTION 208-2.
12. SEWERS TO BE TESTED FOR LEAKAGE PER SECTION 208-1.4 OF THE STANDARD SPECIFICATIONS AND SPECIAL PROVISIONS.
13. RESURFACE ALL TRENCHES WITHIN PAVED AREAS TO MEET LOS ANGELES COUNTY PUBLIC WORKS OR CALIFORNIA STATE HIGHWAY REQUIREMENTS IN ACCORDANCE WITH PERMITS.
14. FULL COMPLIANCE WITH SECTION 208-1.3A OF THE STANDARD SPECIFICATIONS WILL BE REQUIRED FOR BACKFILL IN STREETS. CERTIFICATION OF BACKFILL COMPACTION AND SAND EQUIVALENTS BY A QUALIFIED REGISTERED TESTING LABORATORY SHALL BE PROVIDED BY THE PERMITTEE PRIOR TO THE ISSUANCE OF A CERTIFICATE OF PARTIAL ACCEPTANCE.
15. SPECIAL BACKFILL IN EXISTING TRENCHES OR IN EXISTING TRENCHES AND REPLACE OTHER BACKFILL SO AS TO ACHIEVE THE NATURAL OR FINISHED GRADES AND SLOPES SHOWN ON THE GRADING PLAN APPROVED FOR THIS DEVELOPMENT BY THE LAND DEVELOPMENT DIVISION. IN ALL BACKFILL AND EARTH RELATED SHALL BE COMPACTED TO A MINIMUM OF 90% OF MAXIMUM DENSITY PER A.S.T.M. 510 METHOD OF TEST D930 AS INDICATED. ACCEPTABLE CERTIFICATION OF SUCH COMPACTION SHALL BE SUBMITTED TO THE CONSTRUCTION DIVISION, PUBLIC WORKS DEPT.

SANITARY SEWERS

TO BE CONSTRUCTED IN
TRACT NO. 43724
 IN THE UNINCORPORATED TERRITORY
 OF THE COUNTY OF LOS ANGELES
PRIVATE CONTRACT NO. 10630
C-231-C, 5
2 SHEETS, 3 PAGES

SCALE: VERT. 1" = 8'
 HORIZ. 1" = 40'
 APRIL, 1987
 PREPARED IN THE OFFICES OF
LOREN PHILLIPS & ASSOCIATES, INC.
 1740 EAST HUNTINGTON DR. (STE 206)
 QUARTER, CA 91008 (916) 558-2511 (916) 681-7885
 BY: *[Signature]*
 REG. CE NO. 12764
 EXPIRATION DATE 9/31/87

THE FOLLOWING LATEST REVISED STANDARD PLANS ON FILE IN THE OFFICE OF THE DEPARTMENT OF PUBLIC WORKS SHALL APPLY IN THE CONSTRUCTION OF THIS PROJECT:

LEGEND	5-1
MINIMUM PUBLIC SAFETY REQUIREMENTS	5-2
BRICK SEWER MANHOLE	5-3
STANDARD MANHOLE STEP	5-7
RECORDING FOR SEWER PIPE	5-21
CRADLING AND ENCASUREMENT	5-22
WYE OR TEE SUPPORT	5-26
ALLOWABLE TRENCH WIDTHS	5-33
LOCKING MANHOLE FRAME AND COVER	5-35
NON-REINFORCED PRECAST CONCRETE SEWER MANHOLE	5-38
RECTANGULAR SHALLOW SEWER MANHOLE	5-38
IN ADDITION THE FOLLOWING LAS VIRGENES MUNICIPAL WATER DISTRICT STANDARDS SHALL APPLY TO THE CONSTRUCTION OF THIS PROJECT:	
STANDARD MANHOLE FRAME AND COVER	5-3
STANDARD MANHOLE FRAME AND COVER	5-3

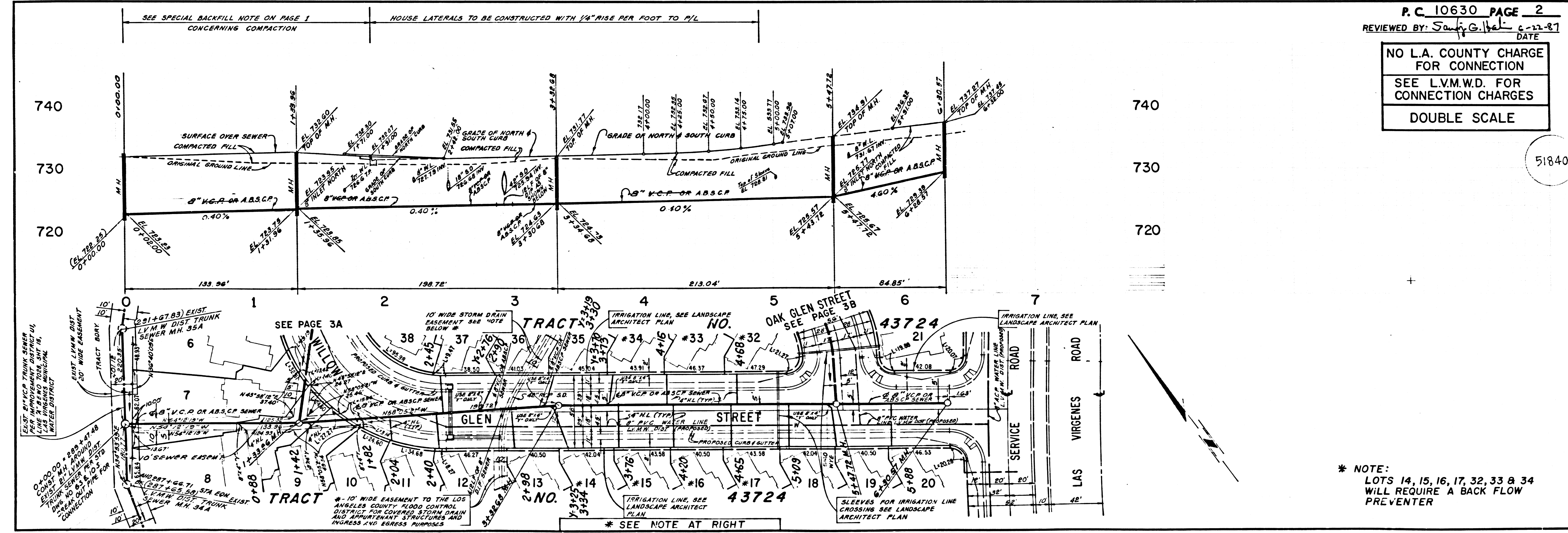
THOMAS A. TIDEMANSON
 DIRECTOR OF PUBLIC WORKS

APPROVED: *[Signature]* 6/6/87
 3
 CHECKED: *[Signature]* 6/22/87
 REG. CE NO. 16897

LAS VIRGENES MUNICIPAL WATER DISTRICT

CALABASAS_BLDG DIST. 9.1

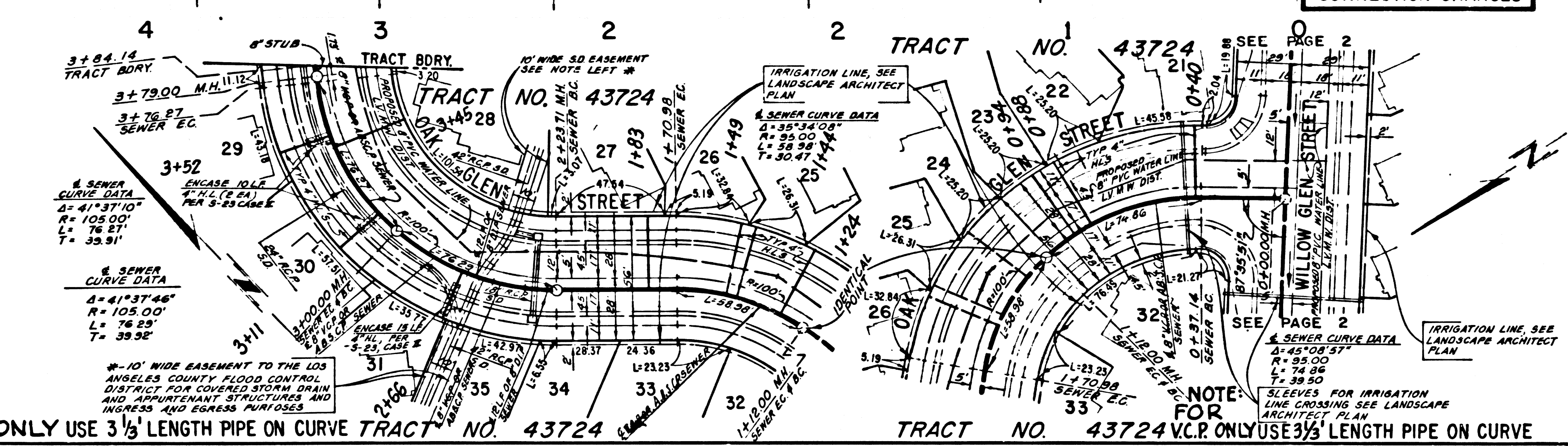
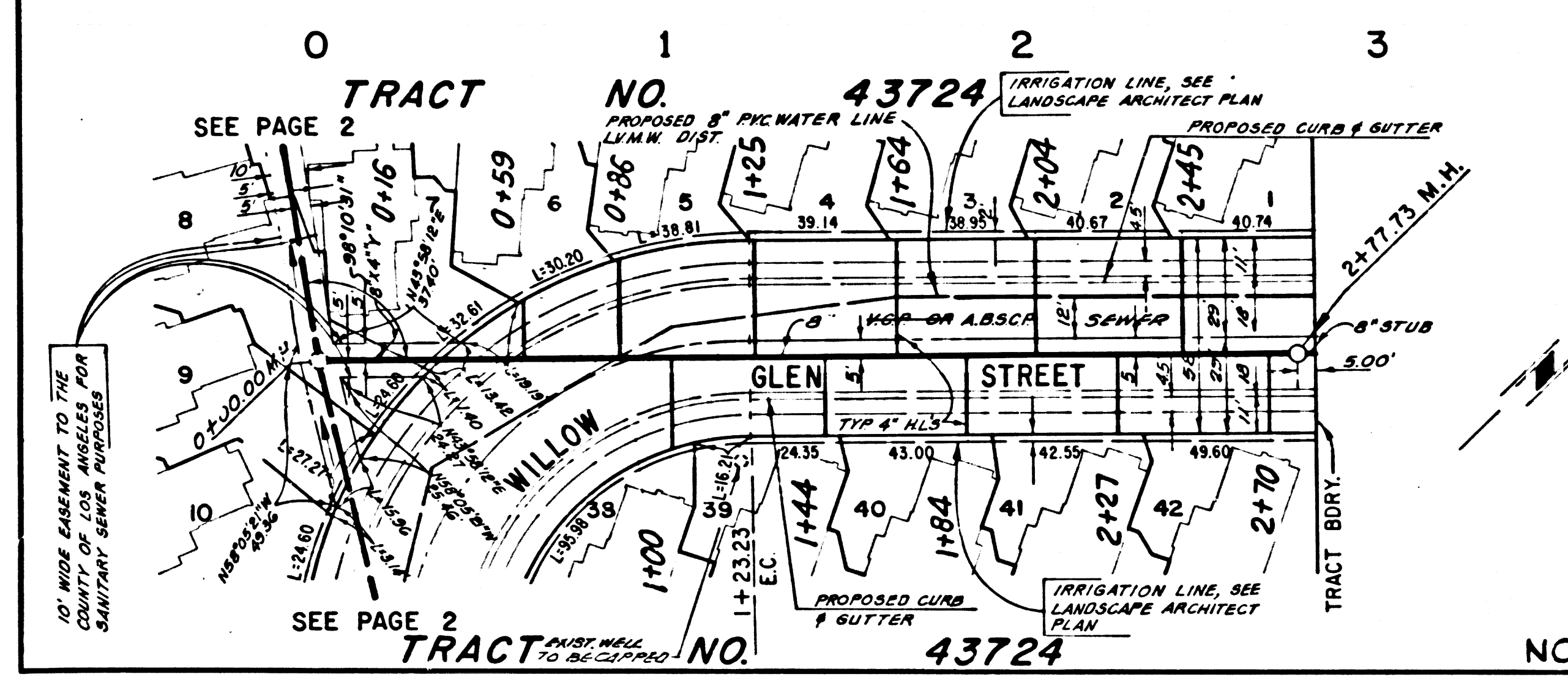
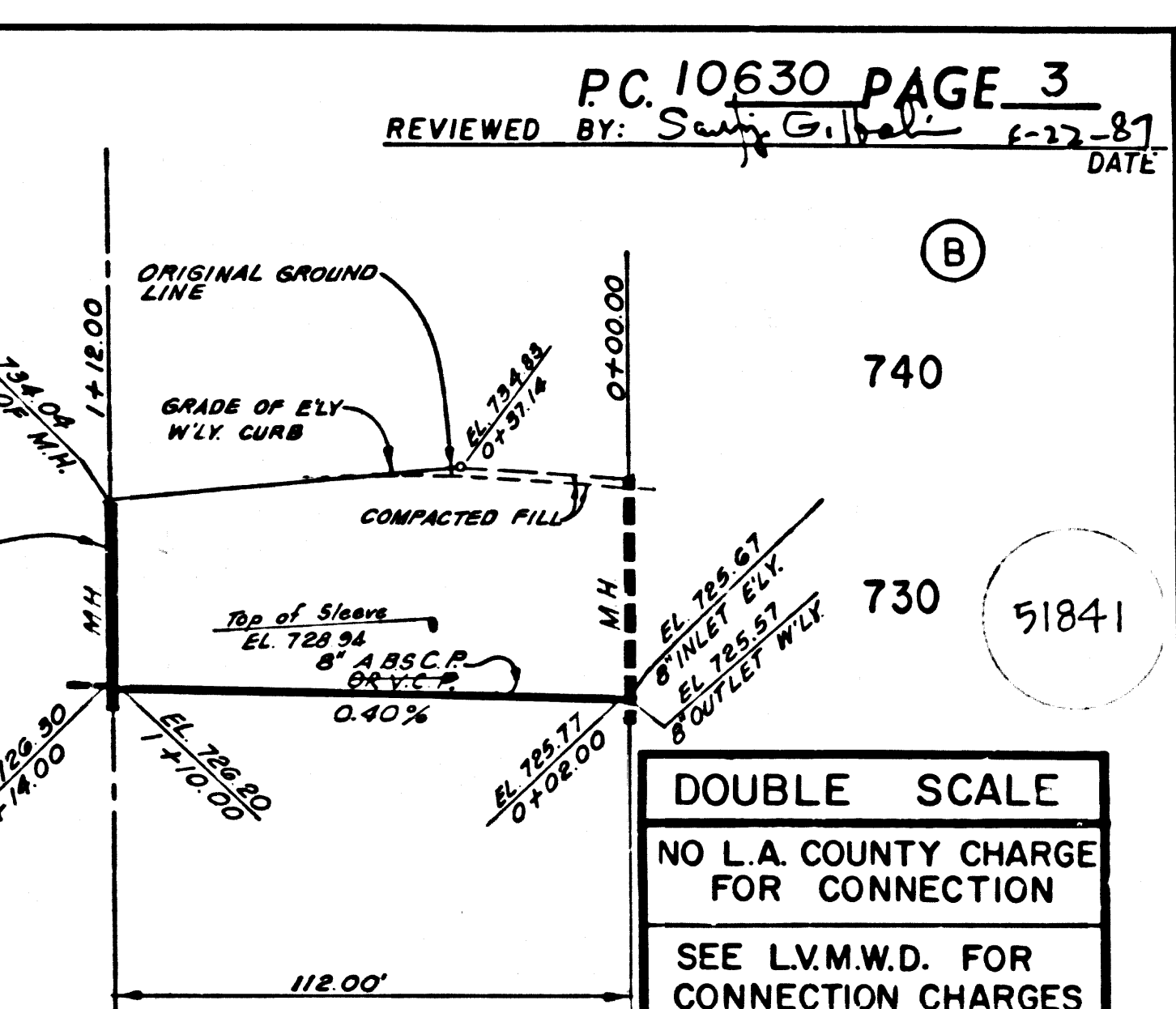
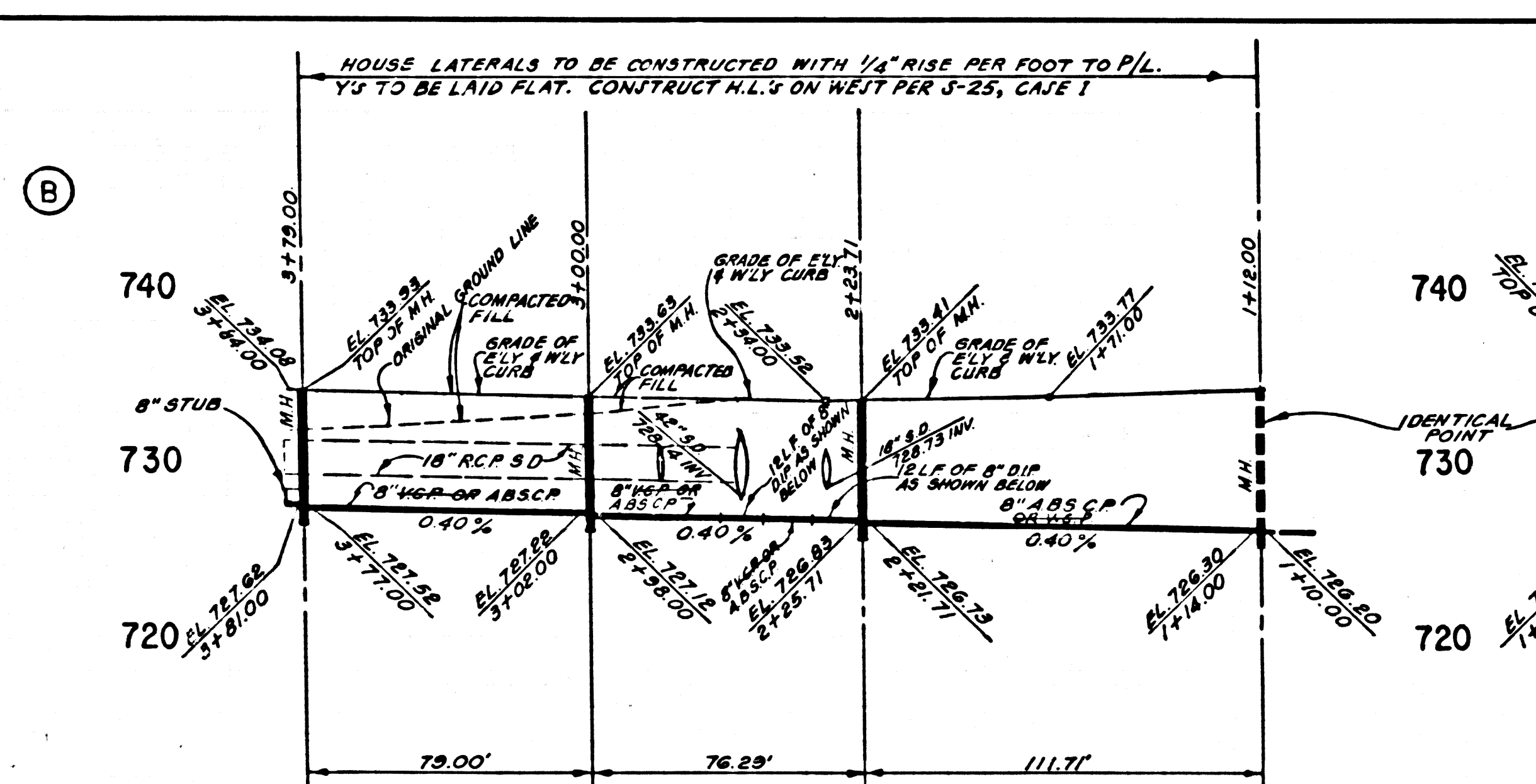
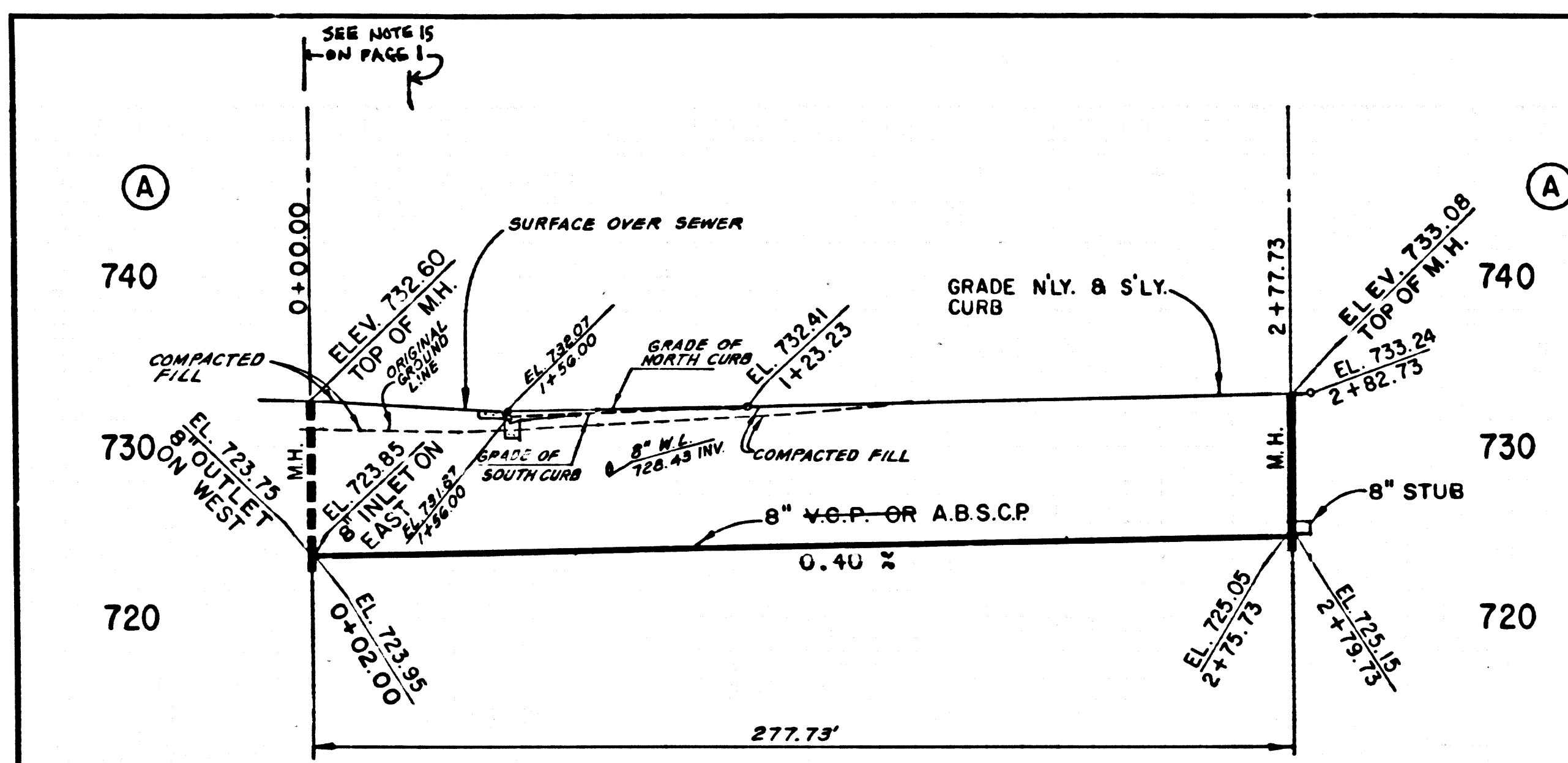
APPROVED: *[Signature]* 5/6/87
 H.W. STOKES
 CHIEF ENGINEER



NO L.A. COUNTY CHARGE FOR CONNECTION
SEE L.V.M.W.D. FOR CONNECTION CHARGES
DOUBLE SCALE

* NOTE:
 LOTS 14, 15, 16, 17, 32, 33 & 34
 WILL REQUIRE A BACK FLOW PREVENTER

10630.C
 PASTE ON TRACT



PC 10630 PAGE 3
REVIEWED BY: [Signature] DATE: 1-27-87

DOUBLE SCALE
NO L.A. COUNTY CHARGE FOR CONNECTION
SEE L.V.M.W.D. FOR CONNECTION CHARGES

② 05301 39 45TEP ON TRACT

PAGE _____