

SANITARY SEWERS

TO BE CONSTRUCTED

TRACT NO. 35396

PRIVATE CONTRACT NO. 10637

INDEX: C232, E-5

12 SHEETS, 24 PAGES

SCALE: VERT. 1" = 8' HORIZ. 1" = 40'

DECEMBER 1986

PREPARED IN THE OFFICES OF

LIND & HILLERUD, INC.

2065 HUNTINGTON DRIVE

SAN MARINO, CA 91769

BY: JOHN J. SANCINIO REG. C.E. 10233



THE FOLLOWING LATEST REVISED STANDARD PLANS ON FILE IN THE OFFICE OF THE DEPARTMENT OF PUBLIC WORKS SHALL APPLY IN THE CONSTRUCTION OF THIS PROJECT:

LEGEND	8-7
MINIMUM PUBLIC SAFETY REQUIREMENTS	8-3
BRICK MANHOLE	8-21
STANDARD MANHOLE STEP	8-21
BEDDING FOR SEWER PIPE	8-21
CRADLING AND ENCASEMENT	8-29
WYE OR TEE SUPPORT	8-30
ALLOWABLE TRENCH WIDTHS	8-30
LOCKING MANHOLE FRAME AND COVER	8-36
NON-REINFORCED PRECAST CONCRETE MANHOLE	8-36
SHALLOW MANHOLE	8-32 & 8-36
EROSION CONTROL IN STEEP SLOPES	8-31
SPECIAL HOUSE LATERALS	8-25

COUNTY OF LOS ANGELES, CALIFORNIA
THOMAS A. TIDEMANSON, DIRECTOR
DEPARTMENT OF PUBLIC WORKS
LAS VIRGENES MUNICIPAL WATER DISTRICT

APPROVED: *Deen Estabrook* 4-29-87 (DATE)
APPROVED: *H.W. Stokes* (DATE)
REG. C.E. NO. 16841
DATE: 6-22-87

CHECKED: *Frank* *Alan* 4/10/87 (DATE)
CALABASAS BLDG. DIST. 91



GENERAL NOTES:

- ELEVATIONS ARE IN FEET ABOVE U.S.C. & G.S. SEA LEVEL DATUM OF 1929.
- NO REVISIONS SHALL BE MADE IN THESE PLANS WITHOUT THE APPROVAL OF THE DEPT. OF PUBLIC WORKS.
- NO REPRESENTATIVE OF THE DEPT. OF PUBLIC WORKS WILL SURVEY OR LAY OUT ANY PORTION OF THE WORK.
- GRADES TO WHICH THIS IMPROVEMENT IS TO BE CONSTRUCTED ARE SHOWN ON PLANS AND PROFILES. GRADE POINTS FOR TOP OF CURBS, CENTER LINE OF STREETS OR CENTER LINE OF ALLEYS ARE SHOWN BY CIRCLES ON PROFILES. AT ALL POINTS BETWEEN DESIGNATED POINTS THE GRADE SHALL BE ESTABLISHED SO AS TO CONFORM TO A STRAIGHT LINE DRAWN BETWEEN SAID DESIGNATED POINTS.
- THE PRIVATE ENGINEER SHALL FURNISH THE DEPT. OF PUBLIC WORKS WITH GRADE SHEETS AND STATIONING FOR ALL HOUSE LATERALS AND "T" OR "T" BRANCHES AND SHALL PROVIDE STAKES FOR THEM AT THEIR PROPER LOCATIONS WITH STATIONING PLAINLY MARKED. ALL HOUSE LATERALS SHALL BE CONSTRUCTED IN A STRAIGHT ALIGNMENT AT RIGHT ANGLES FROM THE MAINLINE SEWER EXCEPT AS SHOWN ON THE PLANS. HOUSE LATERALS FROM CHIMNEYS SHALL NOT HAVE AN ANGLE OF LESS THAN 45° WITH THE MAIN LINE SEWER. ANY CHANGE IN ALIGNMENT SHALL BE REQUESTED IN WRITING BY THE PRIVATE ENGINEER.
- THE PRIVATE ENGINEER SHALL FURNISH THE HOUSE LATERAL DEPTH AT THE PROPERTY LINE, BELOW THE TOP OF CURB ELEVATION FOR EACH HOUSE LATERAL ON THE GRADE SHEET.
- BEFORE WORK CAN BE STARTED, THE CONTRACTOR MUST OBTAIN A PERMIT TO EXCAVATE IN COUNTY STREETS FROM THE L.A. COUNTY CONSTRUCTION DIVISION PERMIT OFFICE NO. 8 AND PAY A FEE TO THE COUNTY ENGINEER, 2250 ALCAZAR STREET, LOS ANGELES CA 90033 TO COVER THE COST OF CONSTRUCTION INSPECTION AND RECORD PLANS.
- IF WORK IS TO BE DONE IN A STATE HIGHWAY, A PERMIT MUST BE OBTAINED FROM THE STATE OF CALIFORNIA, DIVISION OF HIGHWAYS, 120 SOUTH SPRING STREET, LOS ANGELES, CALIFORNIA.
- APPROVAL OF THIS PLAN BY THE COUNTY OF LOS ANGELES DOES NOT CONSTITUTE A REPRESENTATION AS TO THE ACCURACY OF THE LOCATION OF OR THE EXISTENCE OR NON-EXISTENCE OF ANY UNDERGROUND UTILITY PIPE, OR STRUCTURE WITHIN THE LIMITS OF THIS PROJECT. THIS NOTE APPLIES TO ALL PAGES.
- REFER TO SECTION 71041 OF THE STANDARD SPECIFICATIONS, REGARDING SAFETY ORDERS.
- PRIOR TO THE ISSUANCE OF THE REQUIRED SEWER CONSTRUCTION PERMIT, THE CONTRACTOR SHALL OBTAIN AND FILE WITH THE DEPT. OF PUBLIC WORKS COPIES OF A PERMIT TO EXCAVATE IN COUNTY STREETS FROM THE LOS ANGELES COUNTY CONSTRUCTION DIVISION. A PERMIT FOR EXCAVATION AND TRENCHES FROM THE STATE OF CALIFORNIA DIVISION OF INDUSTRIAL SAFETY AND A CERTIFICATE OF WORKER'S COMPENSATION INSURANCE WITH THE DEPARTMENT OF PUBLIC WORKS, 2250 ALCAZAR STREET, RM 2603, LOS ANGELES, CALIFORNIA 90033 NAMED AS THE CERTIFICATE HOLDER TO NOTIFY 30 DAYS PRIOR TO CANCELLATION OF PERMIT.

CONSTRUCTION NOTES:

- WORK SHALL BE CONSTRUCTED ACCORDING TO THE STANDARD SPECIFICATIONS FOR PUBLIC WORKS CONSTRUCTION (1985 EDITION WITH '86' SUPPLEMENTS) AND COUNTY ENGINEER SPECIAL PROVISIONS FOR THE CONSTRUCTION OF SANITARY SEWERS DATED SEPT. 21, 1976 AND SHALL BE PROSECUTED IN THE PRESENCE OF THE DEPT. OF PUBLIC WORKS.
- THE CONTRACTOR SHALL NOTIFY THE CONSTRUCTION DIV-PUBLIC WORKS DEPT. TEL. (213) 226-8281 AT LEAST 24 HOURS BEFORE STARTING ANY WORK UNDER THIS CONTRACT.
- HOUSE LATERALS TO BE CONSTRUCTED WITH INVERTS AT PROPERTY LINE 6 FEET BELOW CURB GRADE EXCEPT AS NOTED.
- WYE OR TEE BRANCHES MAY BE USED FOR CONNECTIONS TO MAINLINE SEWERS EXCEPT AS NOTED.
- WYE BRANCHES ONLY MAY BE USED FOR CONNECTIONS TO MAINLINE SEWERS IF A.B.S.C.P. IS USED.
- ALL STRUCTURES SHALL BE EITHER BRICK MANHOLES PER S-3 OR PRECAST CONCRETE MANHOLES PER S-36, EXCEPT AS NOTED.
- PROVIDE STAKES ON THE PROPERTY LINE OR PROPERTY LINES PRODUCED AT RIGHT ANGLES TO THE SEWER LINE AT THE CENTER LINE OF EACH MANHOLE.
- MANHOLE TOPS IN UNIMPROVED RIGHTS OF WAY TO BE SIX INCHES ABOVE FINISHED GRADE.
- VITRIFIED CLAY PIPE JOINTS SHALL BE TYPE "D" OR "D" PER STANDARD SPECIFICATIONS SECTION 208-2.
- IF A POWER POLE IS WITHIN THREE FEET OF THE SEWER, THE SEWER SHALL BE ENCASED, PER S-23, CASE II, TWO FEET ON EACH SIDE FROM THE POINT OF INTERFERENCE.
- IF DURING THE COURSE OF CONSTRUCTION IT IS DETERMINED THAT THERE IS LESS THAN FOUR FEET OF COVER OVER THE TOP OF A MAINLINE OR HOUSE LATERAL SEWER WHICH IS NOT INDICATED ON THE PLANS, THE PIPE SHALL BE ENCASED PER S-23, CASE II UNLESS OTHERWISE APPROVED BY THE DEPT. OF PUBLIC WORKS.
- ALL JOINTS BETWEEN CAST IRON PIPE AND VITRIFIED CLAY PIPE SHALL BE MADE WITH A RUBBER SLEEVE JOINT, TYPE "C" OR "D", WITH BUSHING IF NECESSARY PER STANDARD SPECIFICATIONS, SECTION 208-2.
- ALL JOINTS BETWEEN CAST IRON PIPE & A.B.S.C.P. SHALL BE MADE WITH APPROVED FITTINGS.
- SEWERS TO BE TESTED FOR LEAKAGE PER SECTION 306-1.4 OF THE STANDARD SPECIFICATIONS AND SPECIAL PROVISIONS.
- RESURFACE ALL TRENCHES WITHIN PAVED AREAS TO MEET L.A. COUNTY ROAD DEPT. OR CALIFORNIA STATE HIGHWAY REQUIREMENTS IN ACCORDANCE WITH PERMITS.
- FULL COMPLIANCE WITH SECTION 306-1.4 OF THE STANDARD SPECIFICATIONS WILL BE REQUIRED FOR BACKFILL IN STREETS. CERTIFICATION OF BACKFILL COMPACTION AND SAND EQUIVALENTS BY A QUALIFIED, REGISTERED TESTING LABORATORY SHALL BE PROVIDED BY THE PERMITTEE PRIOR TO THE ISSUANCE OF A CERTIFICATE OF PARTIAL ACCEPTANCE.
- SPECIAL BACKFILL IN EASEMENT CONSTRUCTION: (A) BACKFILL TRENCH AND REPLACE OTHER EARTH SO AS TO ACHIEVE THE NATURAL OR FINISHED GRADES AND SLOPES SHOWN ON THE GRADING PLAN APPROVED FOR THIS DEVELOPMENT OR BY THE LAND DEVELOPMENT DIVISION. (B) ALL BACKFILL AND EARTH REPLACED SHALL BE COMPACTED TO A MINIMUM OF 90% OF MAXIMUM DENSITY PER A.S.T.M. STD. METHOD OF TEST D1557 AS MODIFIED. ACCEPTABLE CERTIFICATION OF SUCH COMPACTION SHALL BE SUBMITTED TO THE CONSTRUCTION DIV-PUBLIC WORKS DEPT.

PRIVATE ENGINEER'S NOTICE TO CONTRACTORS

THE EXISTENCE AND LOCATION OF ANY UNDERGROUND UTILITY PIPES OR STRUCTURES SHOWN ON THESE PLANS ARE OBTAINED BY A SEARCH OF THE AVAILABLE RECORDS. TO THE BEST OF OUR KNOWLEDGE THERE ARE NO EXISTING UTILITIES EXCEPT AS SHOWN ON THESE PLANS. THE CONTRACTOR IS REQUIRED TO TAKE DUE PRECAUTIONARY MEASURES TO PROTECT THE UTILITY LINES SHOWN AND ANY OTHER LINES NOT OF RECORD OR NOT SHOWN ON THESE PLANS. THE CONTRACTOR SHALL BE RESPONSIBLE FOR NOTIFYING "UNDERGROUND SERVICE ALERT" AT 1-800-422-4132 TWO WORKING DAYS PRIOR TO ANY EXCAVATION OR CONSTRUCTION.

CONSTRUCTION NOTES CONT'D.

- FULL COMPLIANCE WITH PART IV OF THE SPECIAL PROVISIONS IS REQUIRED FOR THE INSTALLATION OF A.B.S. COMPOSITE PIPE.
- MANHOLE WATER STOP GASKETS AND CLAMPS ARE REQUIRED FOR THE CONNECTION OF A.B.S. COMPOSITE PIPE TO MANHOLE STRUCTURES.
- A.B.S. SOLID WALL PIPE MUST BE USED FOR WYE AND HOUSE LATERAL CONNECTIONS TO A.B.S. COMPOSITE MAINLINE SEWER PIPE.
- A.B.S. COMPOSITE PIPE SHALL BE BEDDED IN CONFORMANCE WITH THE TABLE IN SECTION B-3.1 OF PART IV OF THE SPECIAL PROVISIONS.
- THREE DEGREE DEFLECTION COUPLERS ARE REQUIRED FOR RADIUS OF CURVATURE LESS THAN 380 FEET WHEN USING 8" A.B.S. COMPOSITE PIPE.
- NO CONNECTIONS FOR DISPOSAL OF INDUSTRIAL WASTE IS ALLOWED IF A.B.S. COMPOSITE PIPE IS USED.
- SEWER LINE CURVATURE SHALL NOT BE ACHIEVED BY PULLING OF JOINTS OR BEVELING PIPE ENDS WHEN USING PLASTIC PIPE INCLUDING A.B.S. COMPOSITE PIPE.
- ALL WYES AND/OR HOUSE LATERALS ARE TO BE LOCATED AT LEAST FIVE FEET APART AND WHEN POSSIBLE NOT CLOSER THAN FIVE FEET TO ANY MANHOLE.
- A.B.S. SOLID WALL PIPE IS NOT ACCEPTABLE FOR USE AS MAINLINE SEWER.
- ONLY WYE BRANCHES ARE TO BE USED FOR CONNECTION TO A.B.S. COMPOSITE MAINLINE SEWER PIPE.

REVISION NO 3	APPROVED BY: <i>Samp G. Ibeli</i>
REVISION NO 2	APPROVED BY: <i>Samp G. Ibeli</i>
REVISION NO 1	APPROVED BY: <i>Samp G. Ibeli</i>
REVISION NO 5	APPROVED BY: <i>Samp G. Ibeli</i>

REVISION NO 4: REVISE INDEX MAP TO REFLECT ADDITION OF M.H. ON PAGES 15 AND 16. APPROVED BY: *Samp G. Ibeli*, DATE: 2-9-88.

REVISION NO 3: REVISE WIDTH OF LORENA CT. AS IT INTERSECTS BOTH ARIELLA DR. (PG. 6) & PASSEO PRIMARIO (PG. 11). APPROVED BY: *Samp G. Ibeli*, DATE: 12-18-87.

REVISION NO 2: DELETE ENTIRE STREET (CHRISTINA CT., PG. 10) & DELETE ENTIRE STREET (LORENA CT., PG. 21) & REPLACE WITH NEW DESIGN ON PAGES 21 & PAGE 21. APPROVED BY: *Samp G. Ibeli*, DATE: 9-25-87.

REVISION NO 1: ADD PAGE 23 & PAGE 24 DESIGN TO REFLECT PG. 10 & PG. 21. APPROVED BY: *Samp G. Ibeli*, DATE: 2/10/87.

REVISION NO 5: ADD NOTE ABOVE PROFILE IN REFERENCE TO THIS SPECIAL U.L. CONSTRUCTION & INDICATE THE USE OF C.I.P. & INSTALLATION OF AN ANCHOR BLOCK FOR LOTS 5, 6, 10, 13, 14, 17, 18, 21, 22, 25 & 26 ON PAGES 3 & 6. APPROVED BY: *Samp G. Ibeli*, DATE: 9-11-87.

PAGE 10A: ADD M.H. IN MALAGA COURT AT SPAL 214000. APPROVED BY: *Samp G. Ibeli*, DATE: 9-11-87.

PAGE 10B: CHANGE U.L. CONSTRUCTION NOTE & CRADLE NOTE FOR LOTS 132 & 133. APPROVED BY: *Samp G. Ibeli*, DATE: 9-25-87.

PAGE 20: CHANGE U.L. CONSTRUCTION NOTE & CRADLE NOTE FOR LOT 121. APPROVED BY: *Samp G. Ibeli*, DATE: 9-25-87.

PAGES 15 AND 16: REVISE INDEX MAP TO REFLECT ADDITION OF M.H. ON PAGES 15 AND 16. APPROVED BY: *Samp G. Ibeli*, DATE: 2-9-88.

PAGE 15: ADD M.H. & STAKES AT STATION 5454.42. APPROVED BY: *Samp G. Ibeli*, DATE: 2-9-88.

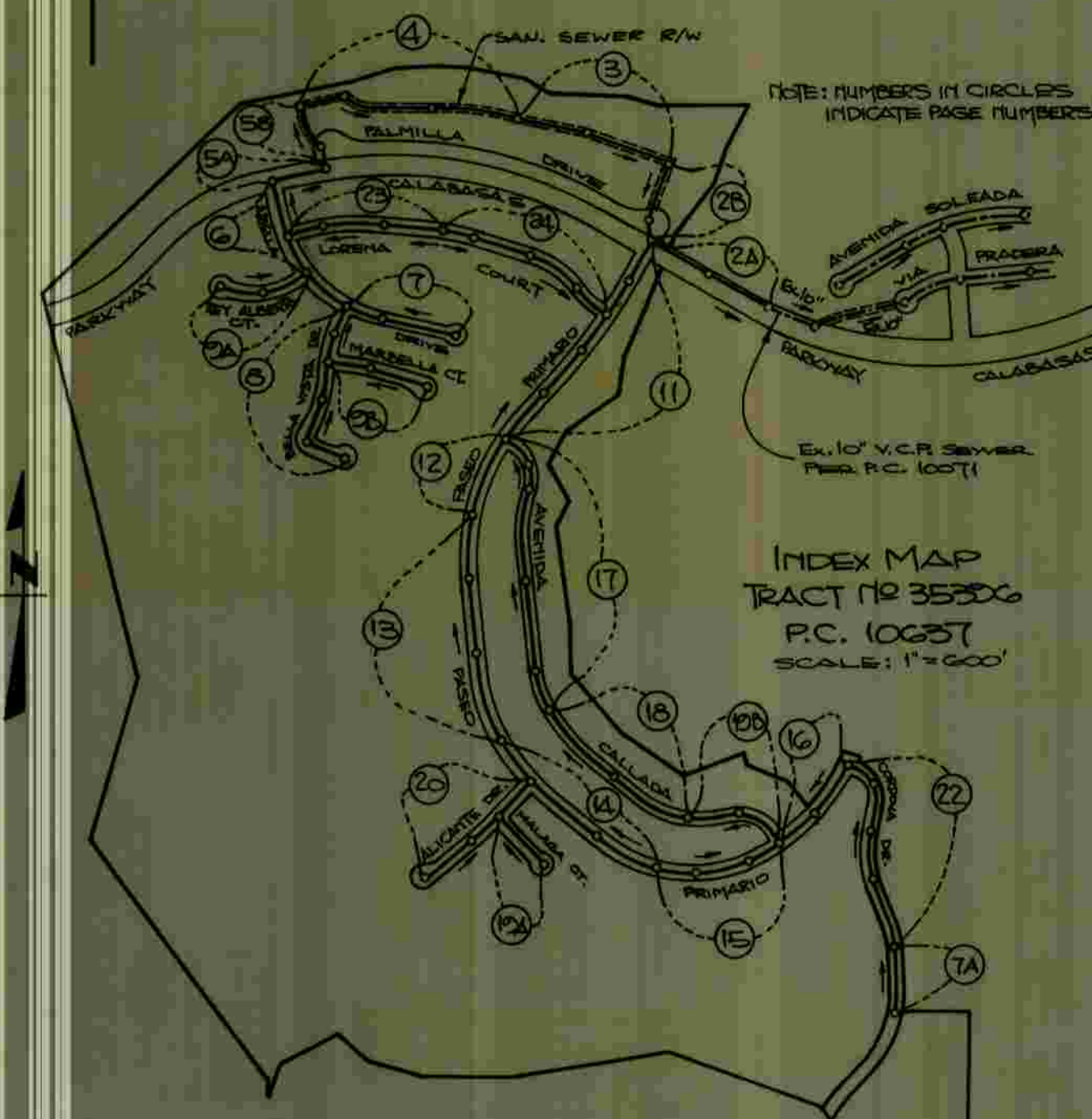
PAGE 16: REVISE M.H. IN PROFILE (LOCATION) AT STATION 5454.42 & ADJUST INVERTS TO MATCH PLAN VIEW LOCATION. APPROVED BY: *Samp G. Ibeli*, DATE: 2-9-88.

LOTS 101-211 & 215-219 ARE OPEN SPACE LOTS & RESTRICTED TO NO CONSTRUCTION.

ISSUE NO HOUSE CONNECTION PERMITS UNTIL OUTLET SEWER P.C. 10071 IS ACCEPTED & IN USE BY COUNTY OF LOS ANGELES.

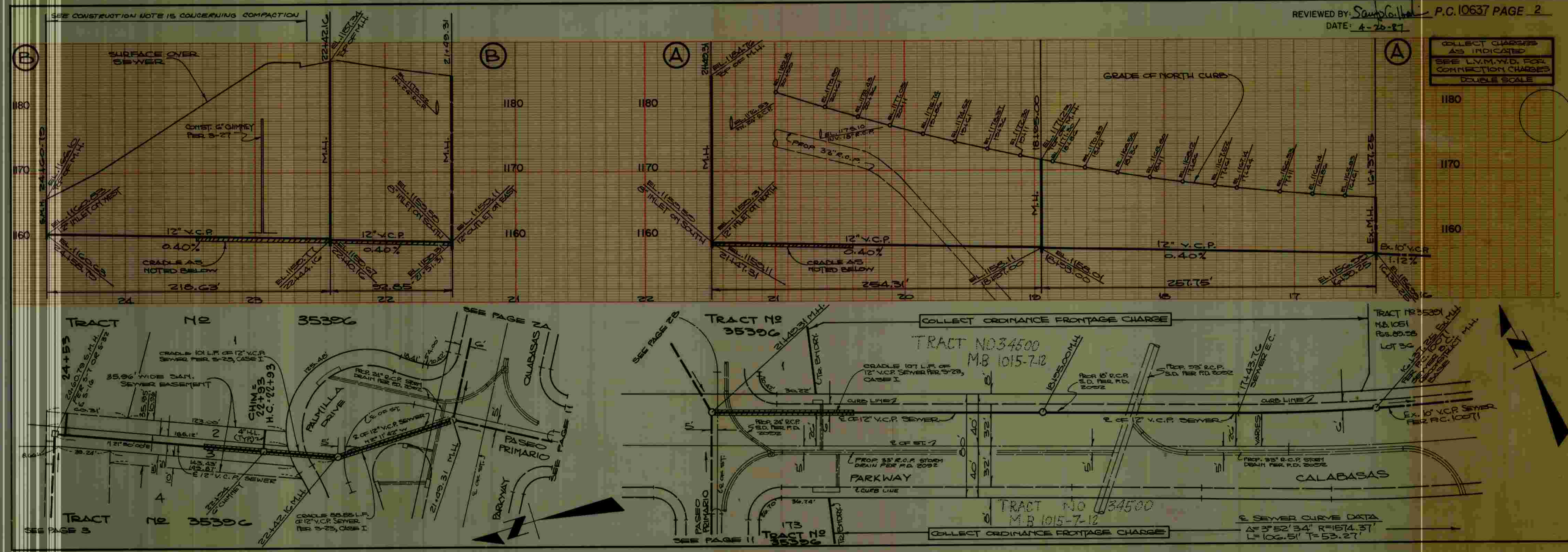
B.M. BY 7540A ELEV. 1135.571

R.D.B.M. TAG S. END BRIDGE 53-1681 OVER VENTURA FRWY AT N.E. CORNER CALABASAS RD AND MUREAU RD 100 FT N & 21 FTE C/L INT MALIBU QUAD. 19 72



AS BUILT IN COMPLETE 4/3/89 7A/22
1st lines do not line up with sewer plan

REVISION NO 4	APPROVED BY: <i>Samp G. Ibeli</i>
REVISION NO 3	APPROVED BY: <i>Samp G. Ibeli</i>
REVISION NO 2	APPROVED BY: <i>Samp G. Ibeli</i>
REVISION NO 1	APPROVED BY: <i>Samp G. Ibeli</i>
REVISION NO 5	APPROVED BY: <i>Samp G. Ibeli</i>



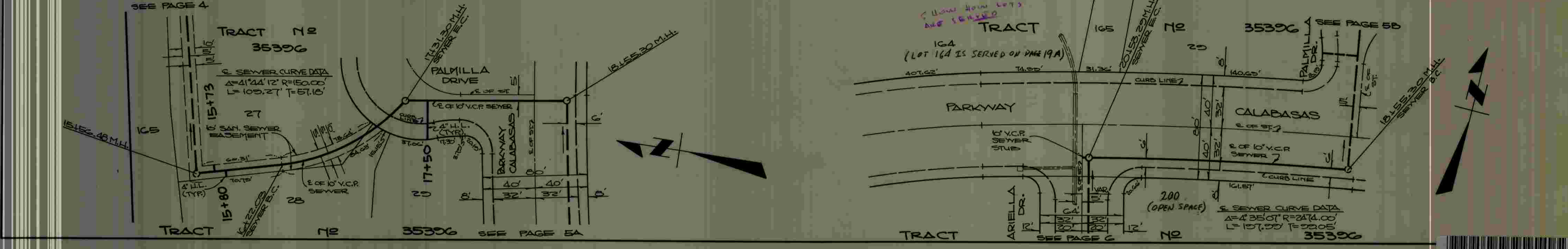
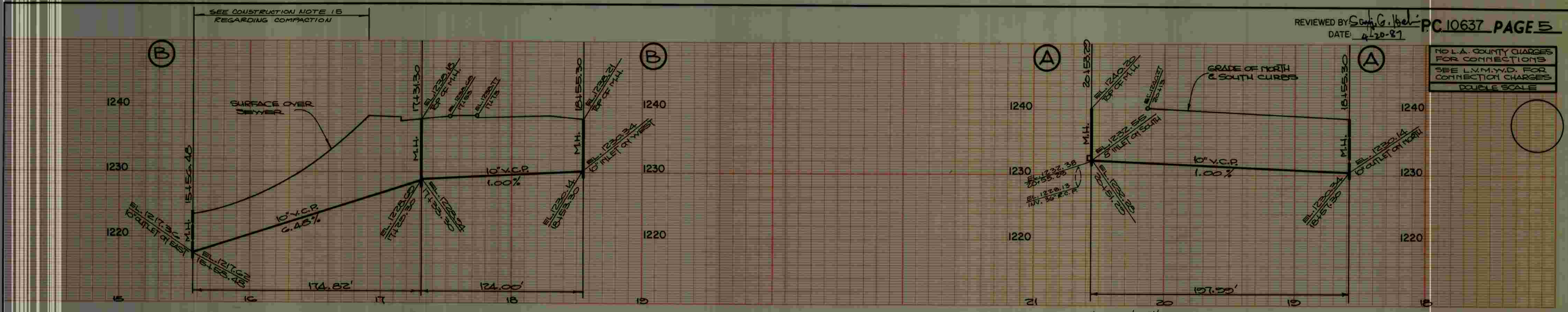
REVIEWED BY: *Samp G. Ibeli* P.C. 10637 PAGE 2
DATE: 4-20-87

COLLECT CHARGES AS INDICATED SEE L.V.M.W.D. FOR CONNECTION CHARGES DOUBLE SCALE

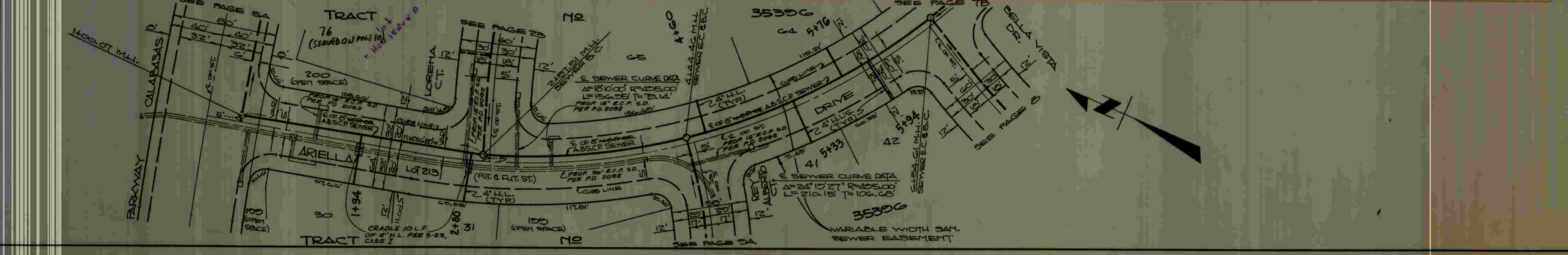
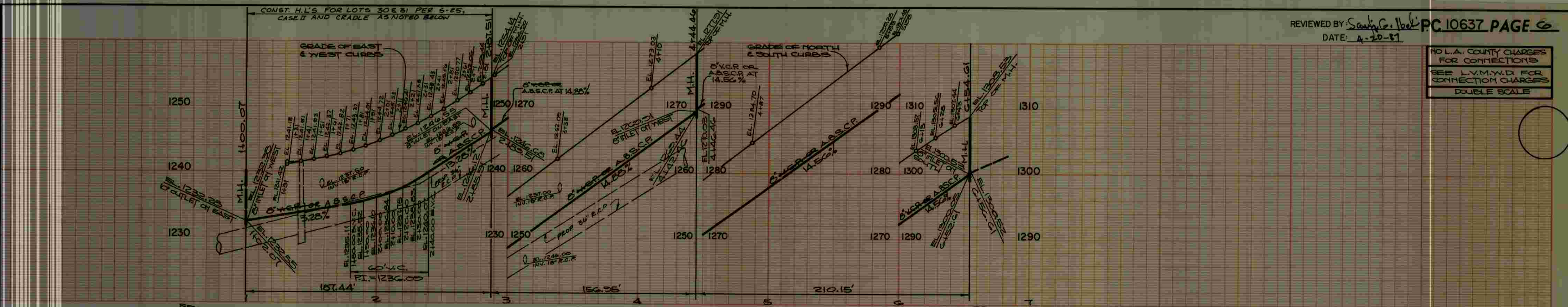
1
BC 10637 CP

08223 .0M TCAPI

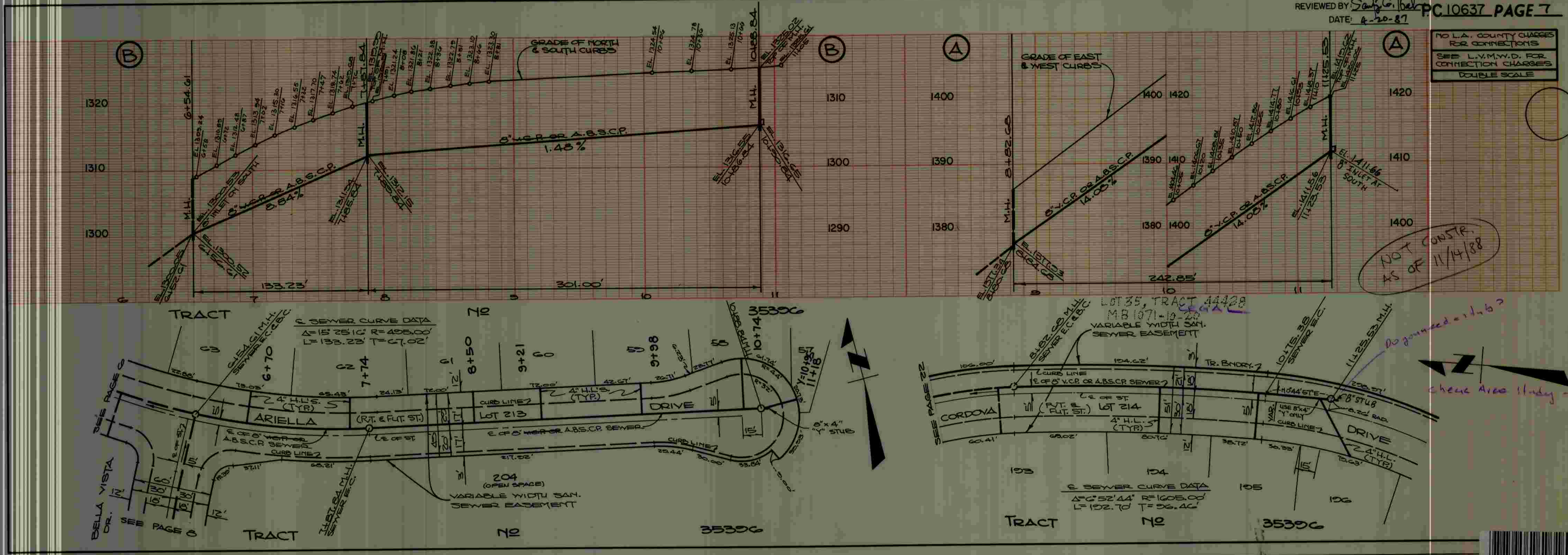
NO L.A. COUNTY CHARGES FOR CONNECTIONS
SEE L.V.M.W.D. FOR CONNECTION CHARGES
DOUBLE SCALE



NO L.A. COUNTY CHARGES FOR CONNECTIONS
SEE L.V.M.W.D. FOR CONNECTION CHARGES
DOUBLE SCALE



NO L.A. COUNTY CHARGES FOR CONNECTIONS
SEE L.Y.M.V.D. FOR CONNECTION CHARGES
DOUBLE SCALE



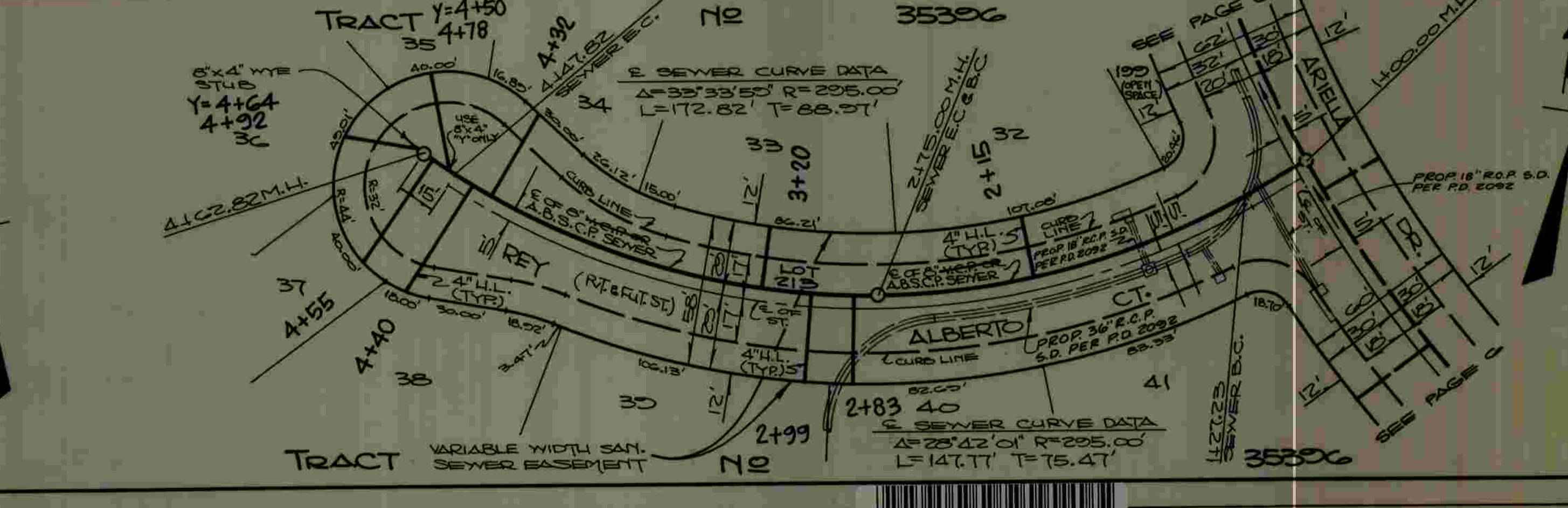
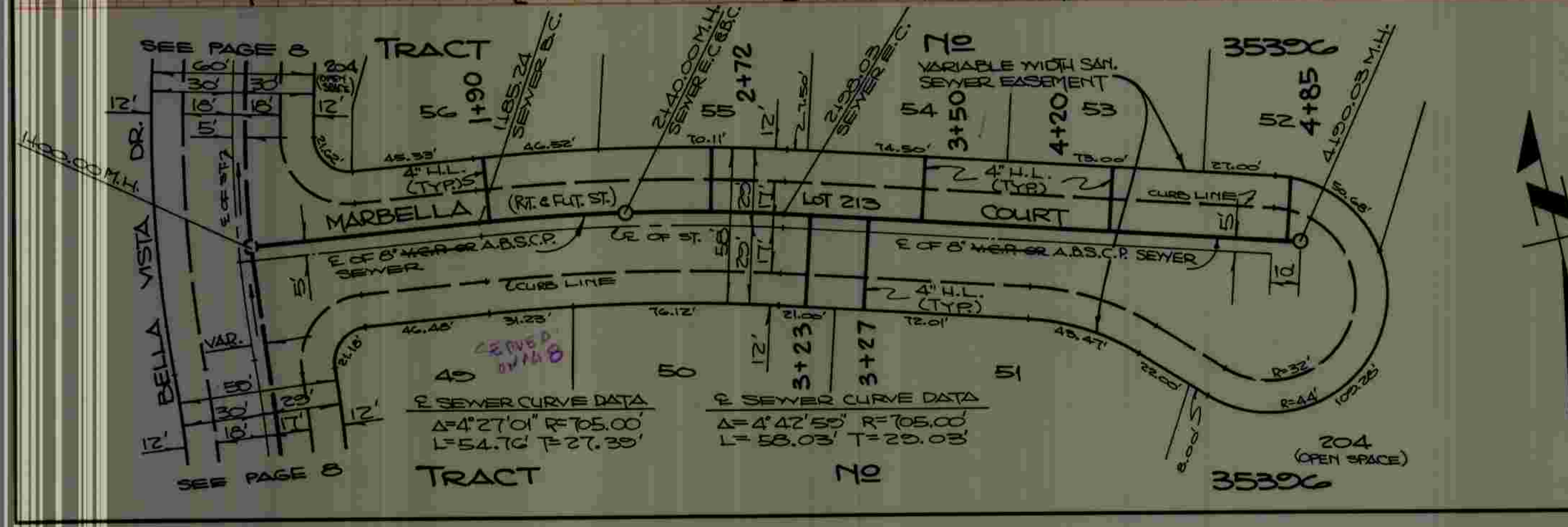
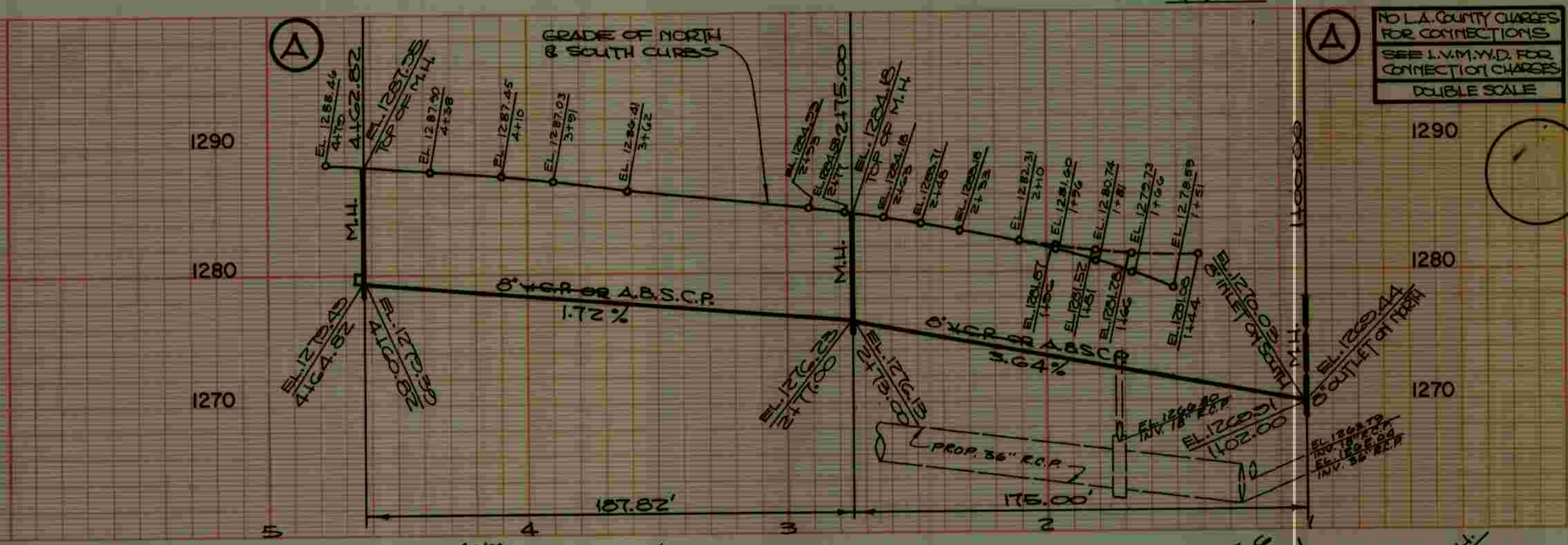
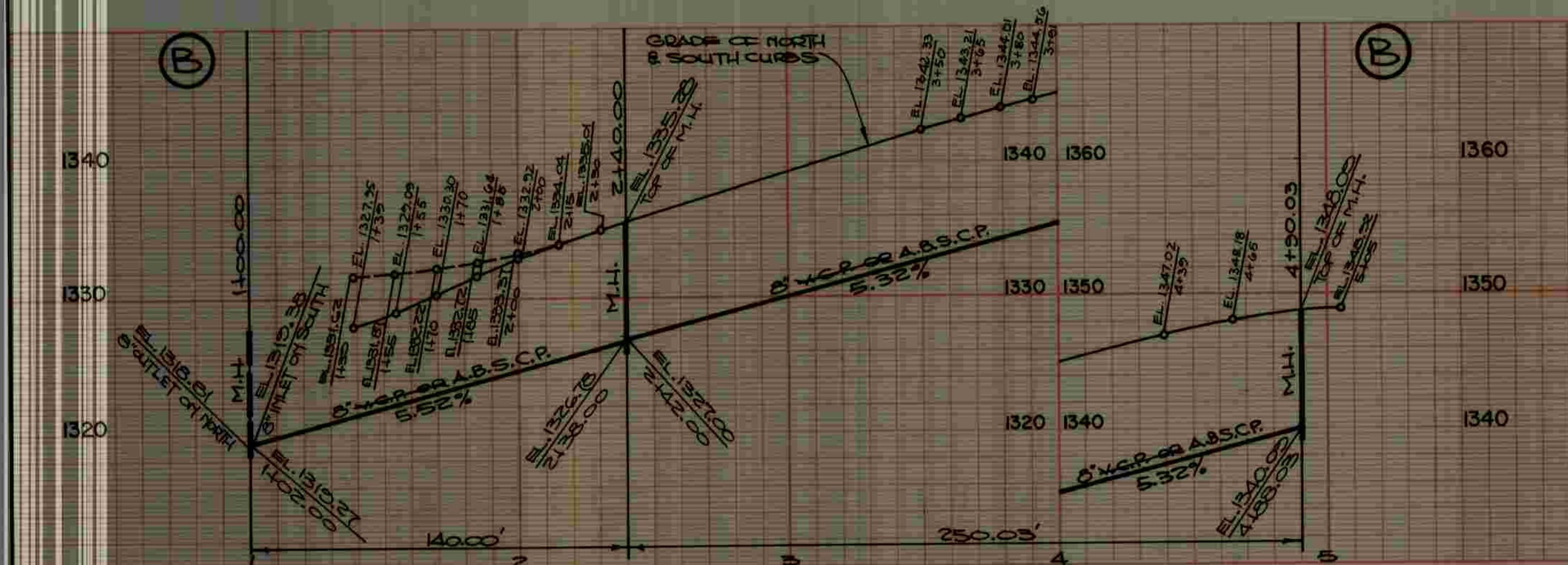
BC 10637

NO L.A. COUNTY CHARGES FOR CONNECTIONS
SEE L.Y.M.V.D. FOR CONNECTION CHARGES
DOUBLE SCALE



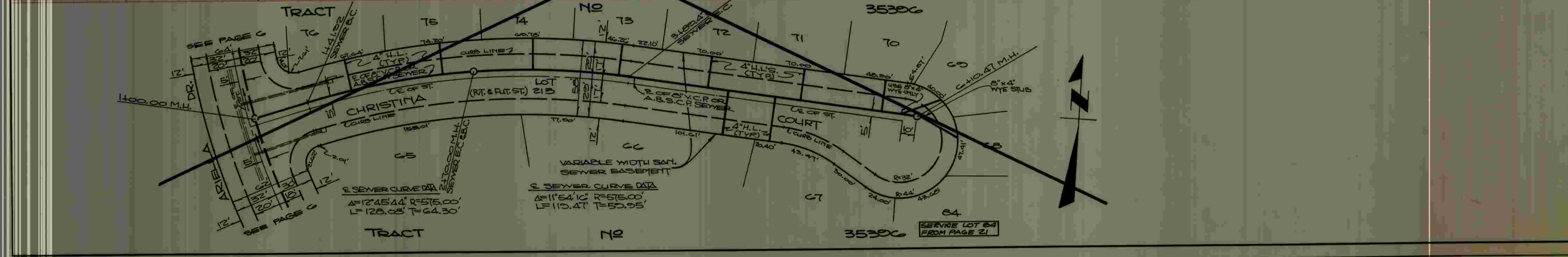
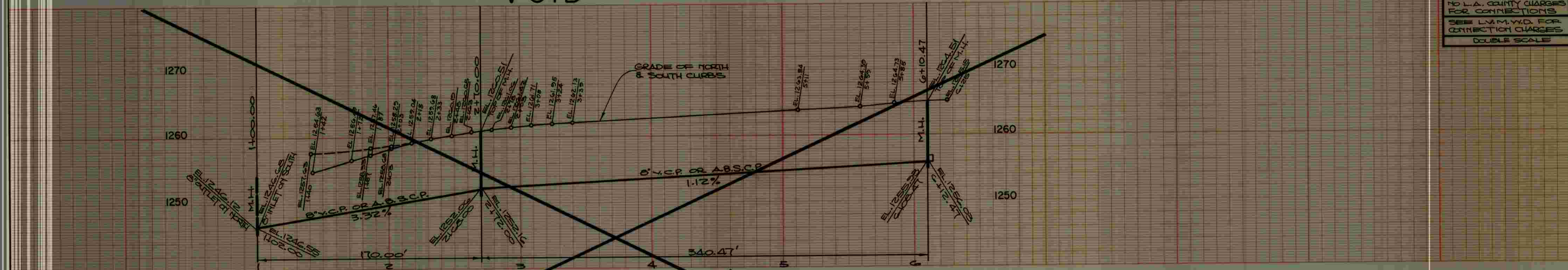
BC 10637

NO L.A. COUNTY CHARGES FOR CONNECTIONS
SEE L.V.M.V.D. FOR CONNECTION CHARGES
DOUBLE SCALE



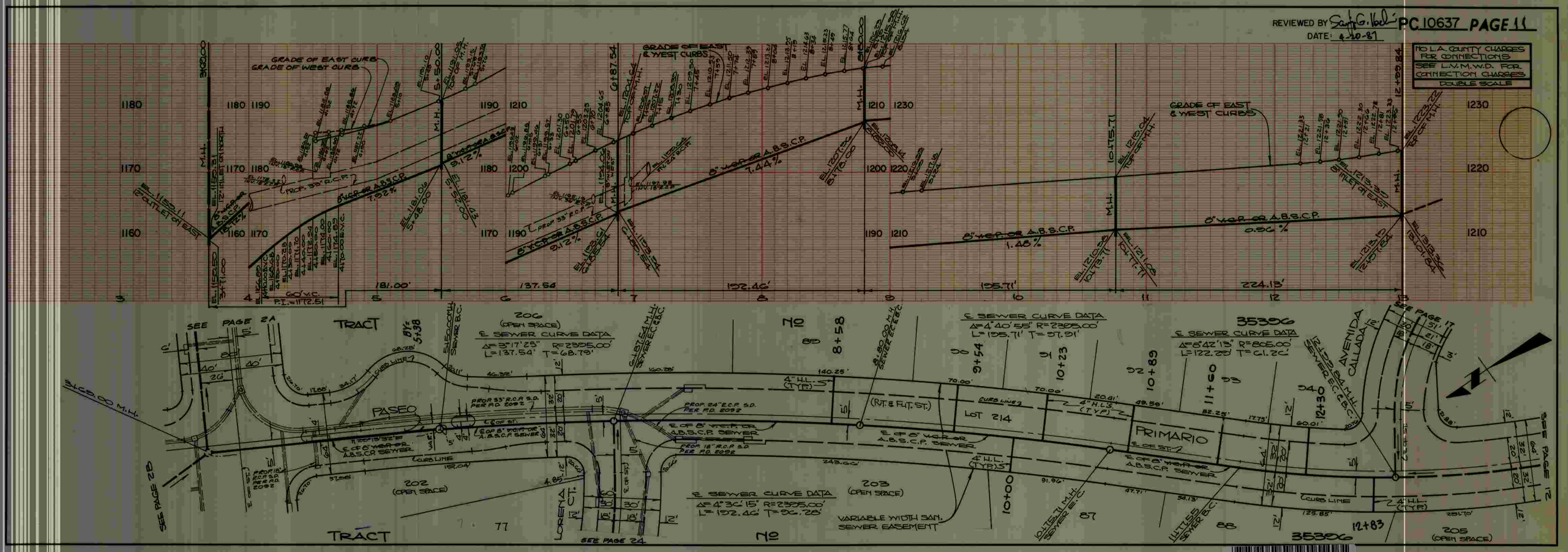
VOID

NO L.A. COUNTY CHARGES FOR CONNECTIONS
SEE L.V.M.V.D. FOR CONNECTION CHARGES
DOUBLE SCALE



TR 10637

TR 10637

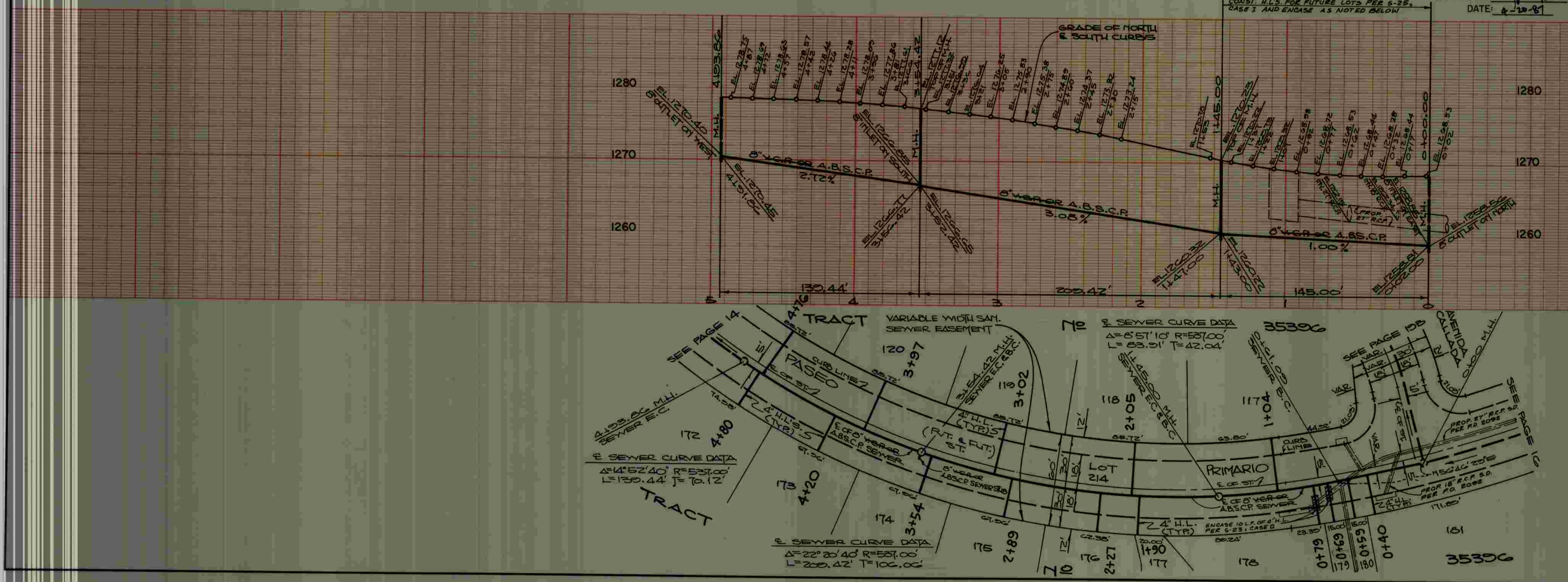


NO L.A. COUNTY CHARGES FOR CONNECTIONS
SEE L.V.M.W.D. FOR CONNECTION CHARGES
DOUBLE SCALE

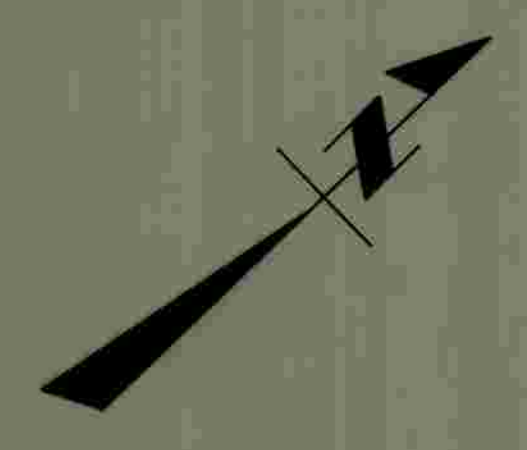
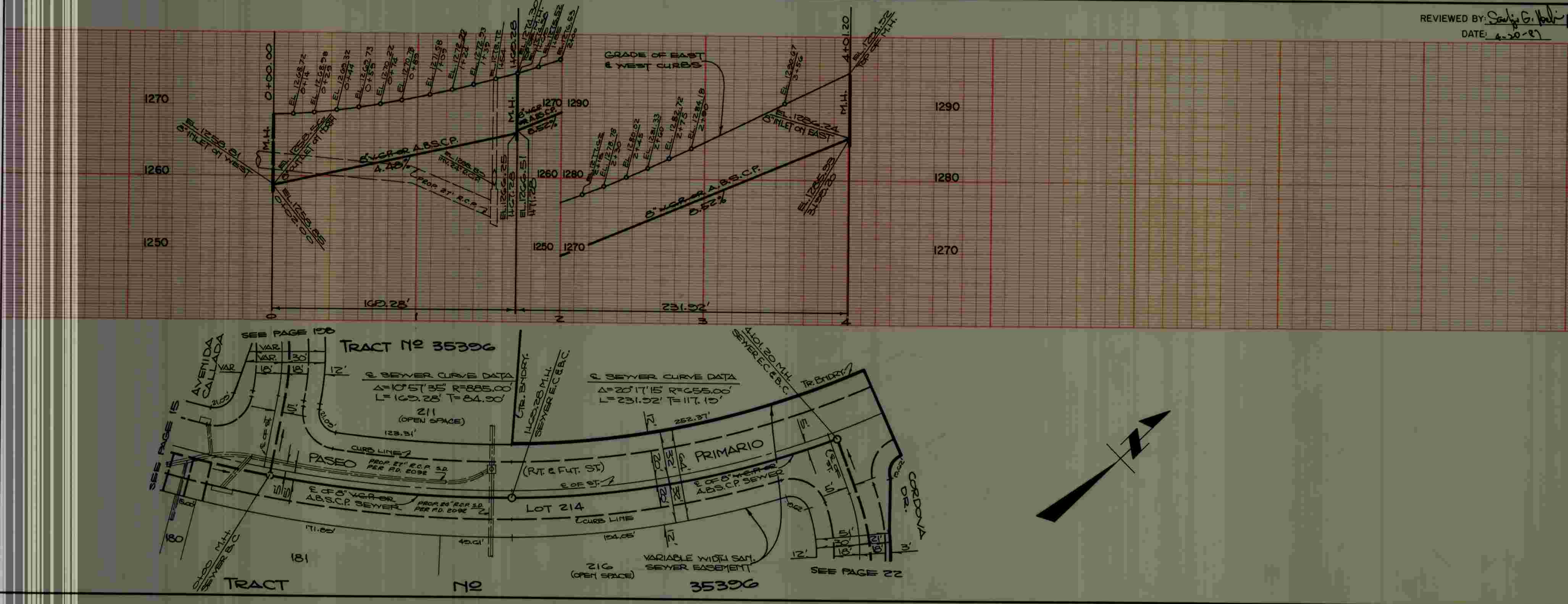


NO L.A. COUNTY CHARGES FOR CONNECTIONS
SEE L.V.M.W.D. FOR CONNECTION CHARGES
DOUBLE SCALE

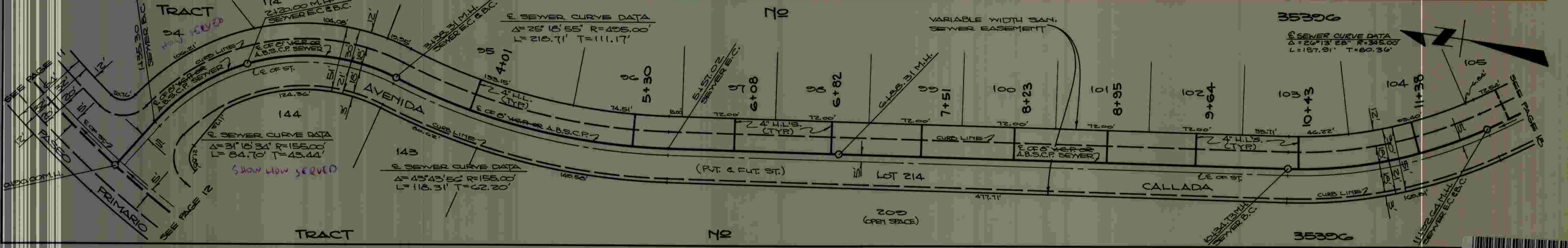
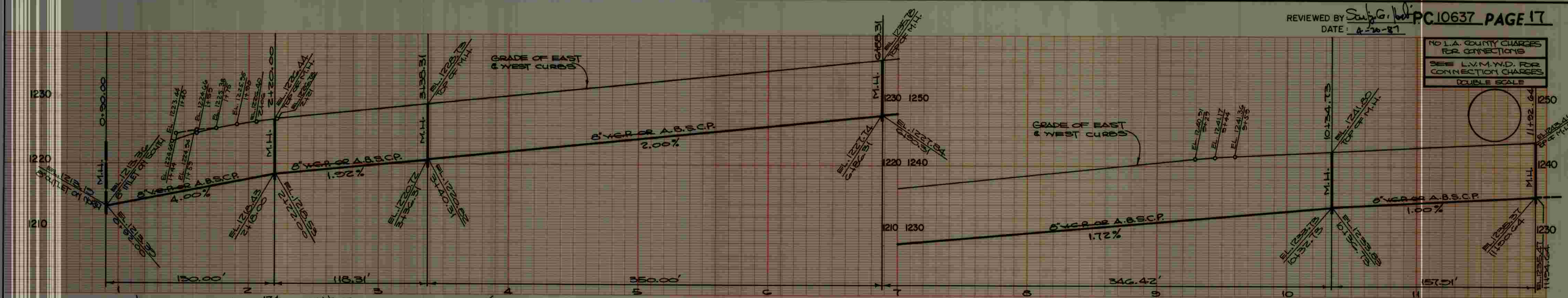
NO L.A. COUNTY CHARGES FOR CONNECTIONS
SEE L.V.M.V.D. FOR CONNECTION CHARGES
DOUBLE SCALE



NO L.A. COUNTY CHARGE FOR CONNECTIONS
SEE L.V.M.V.D. FOR CONNECTION CHARGES
DOUBLE SCALE

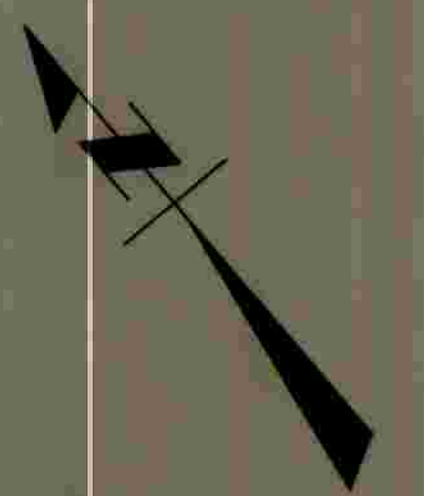
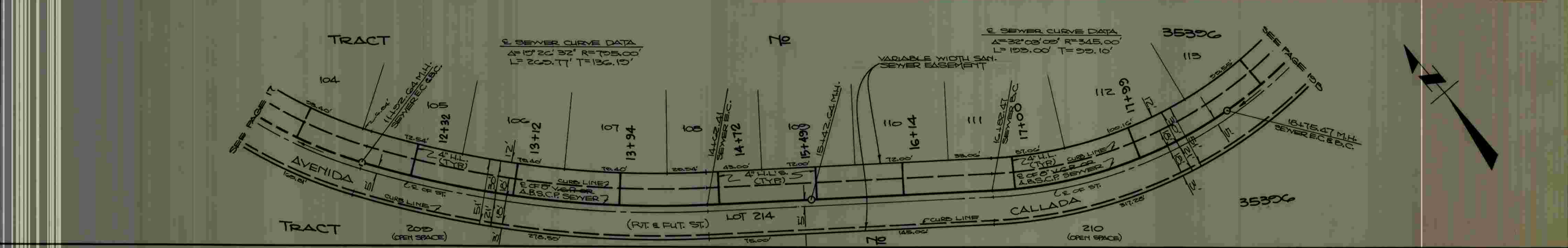
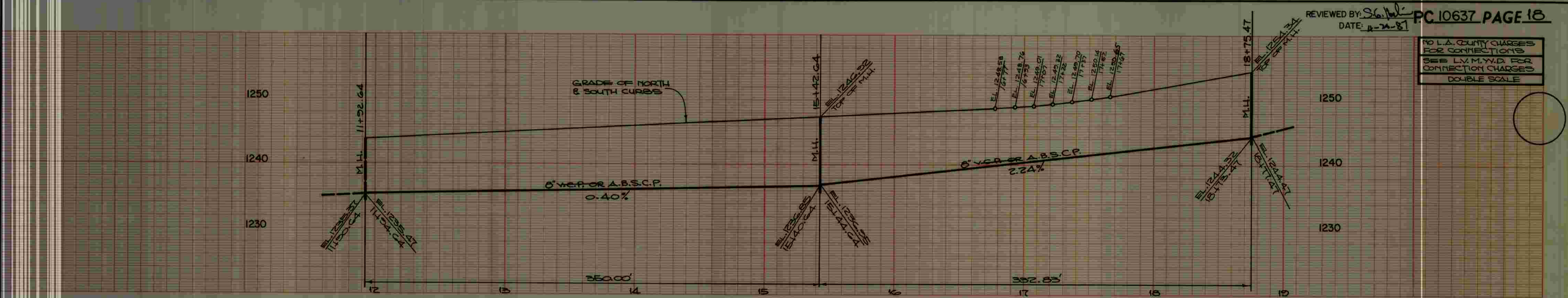


NO L.A. COUNTY CHARGES FOR CONNECTIONS
SEE L.V.M.W.D. FOR CONNECTION CHARGES
DOUBLE SCALE



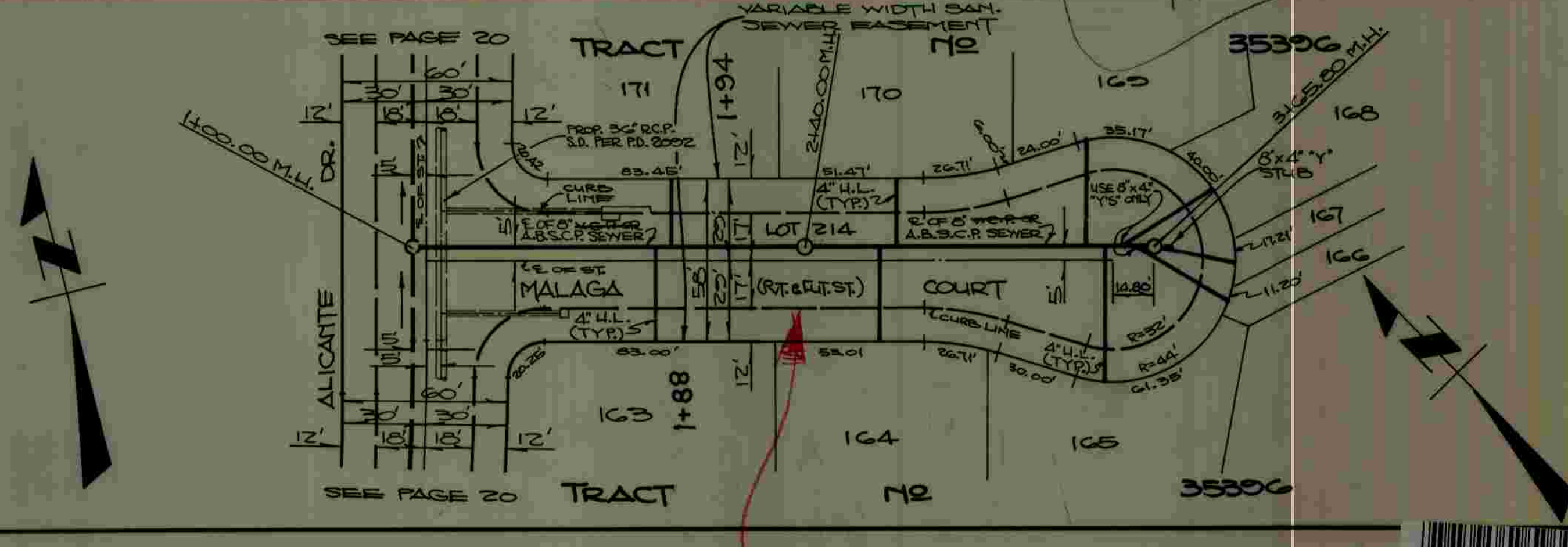
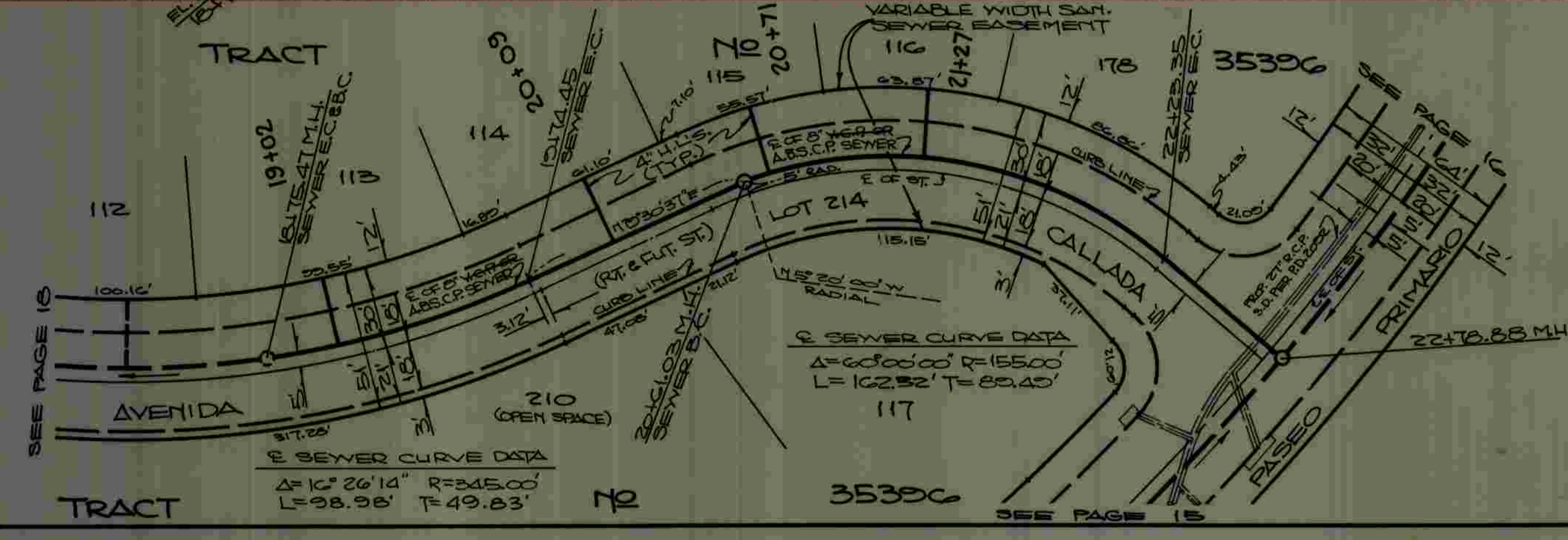
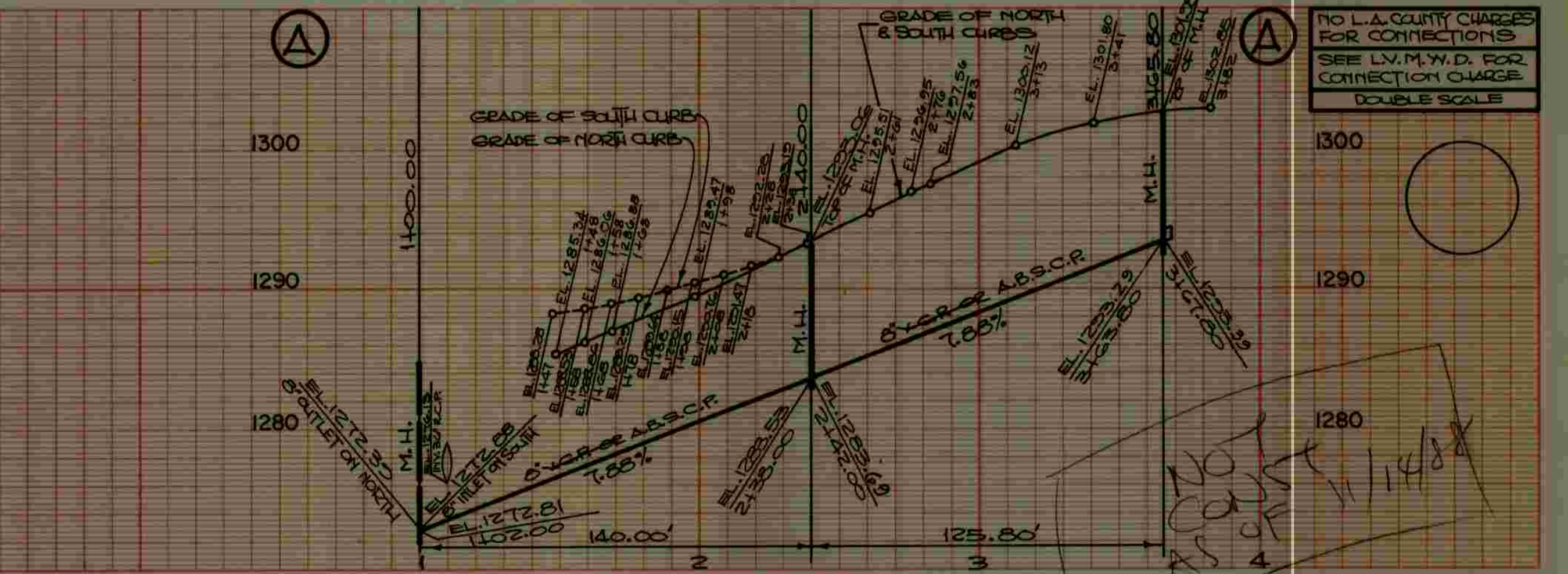
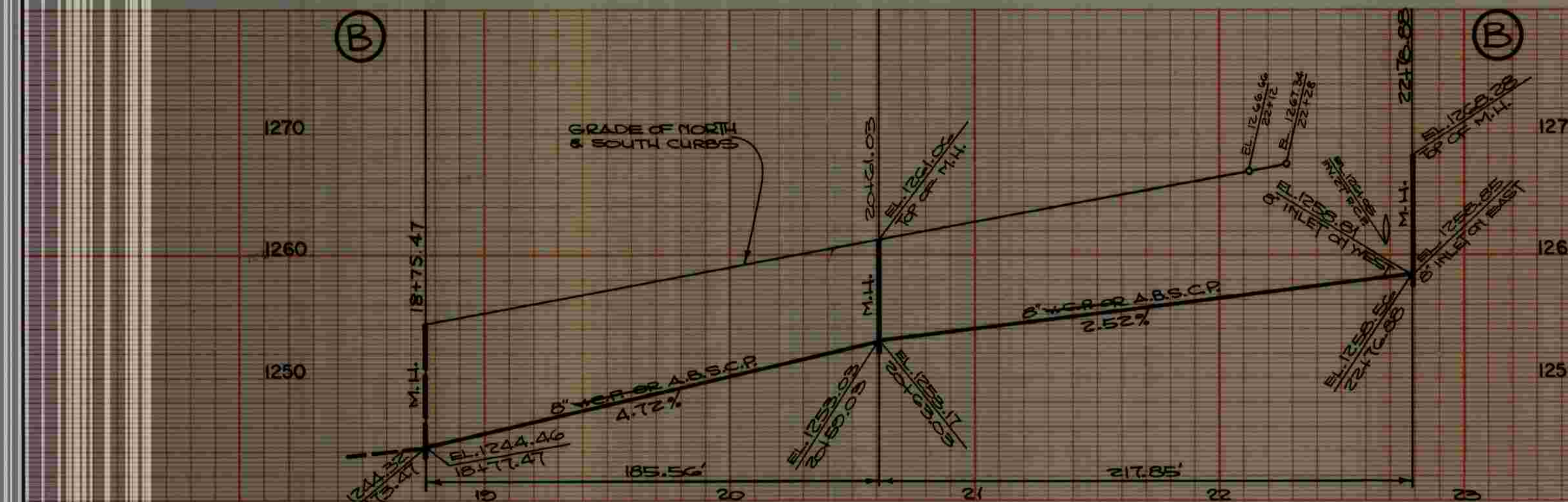
TR 301 39

NO L.A. COUNTY CHARGES FOR CONNECTIONS
SEE L.V.M.W.D. FOR CONNECTION CHARGES
DOUBLE SCALE



TR 301 39

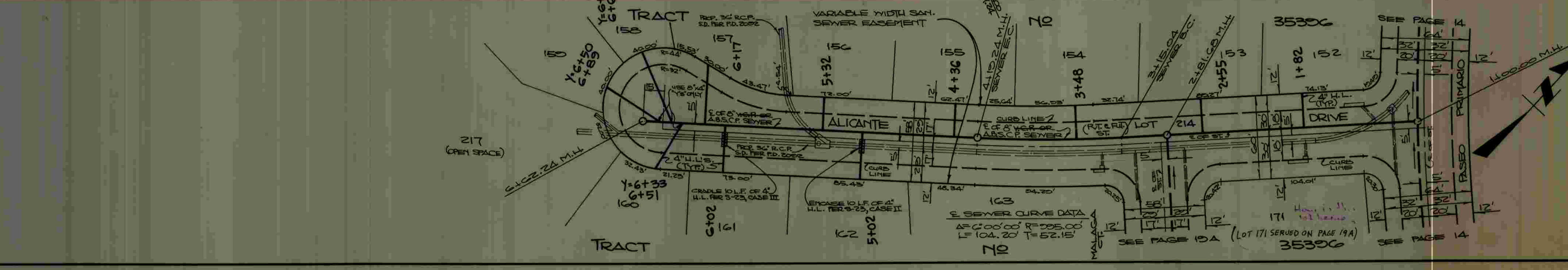
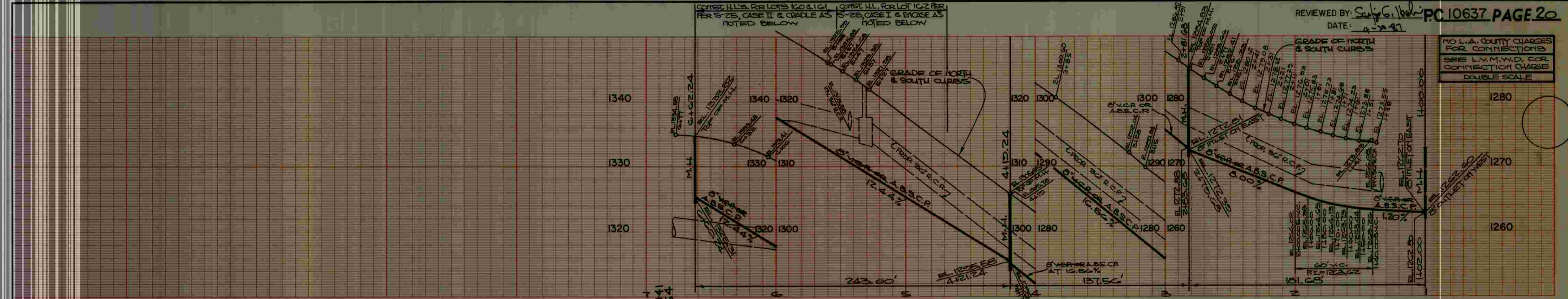
NO L.A. COUNTY CHARGES FOR CONNECTIONS
SEE L.V.M.W.D. FOR CONNECTION CHARGE
DOUBLE SCALE



STOP CONSTR. @ 2+40 M.H.
1-23-89



NO L.A. COUNTY CHARGES FOR CONNECTIONS
SEE L.V.M.W.D. FOR CONNECTION CHARGE
DOUBLE SCALE



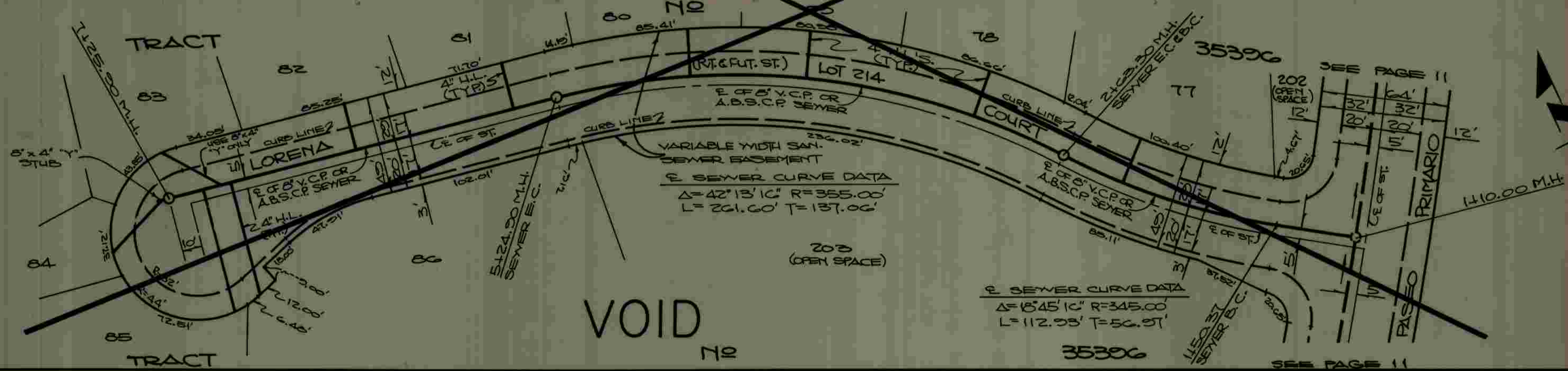
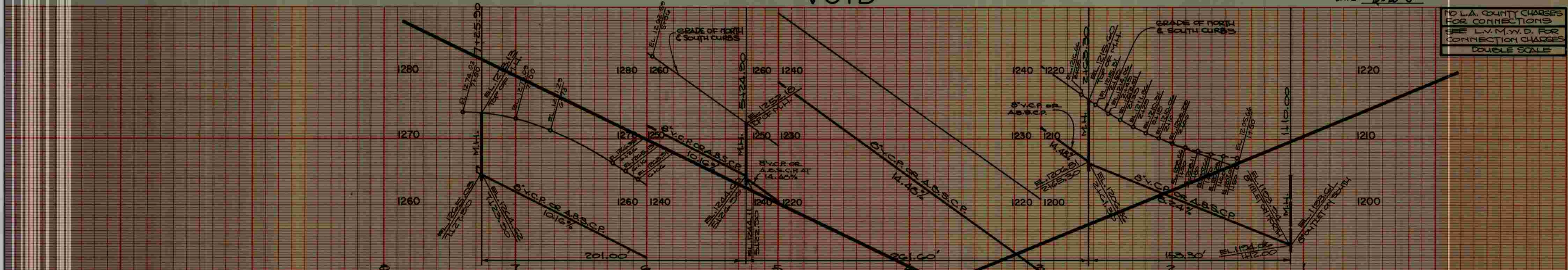
PC 10637 19

PC 10637 20

VOID

REVIEWED BY: *Saujo G. Holt* PC10637 PAGE 21
DATE: *6-20-87*

NO L.A. COUNTY CHARGES FOR CONNECTIONS
SEE L.V.M.W.D. FOR CONNECTION CHARGES
DOUBLE SCALE



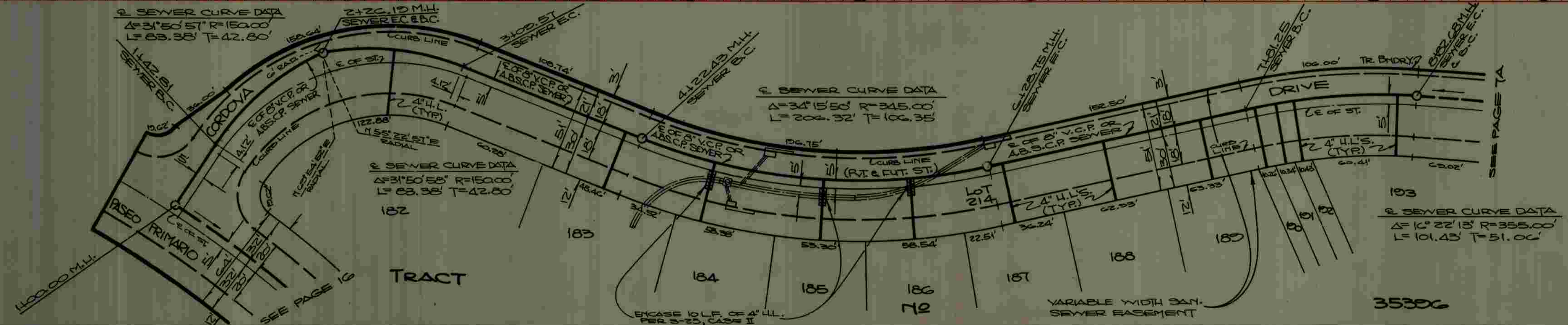
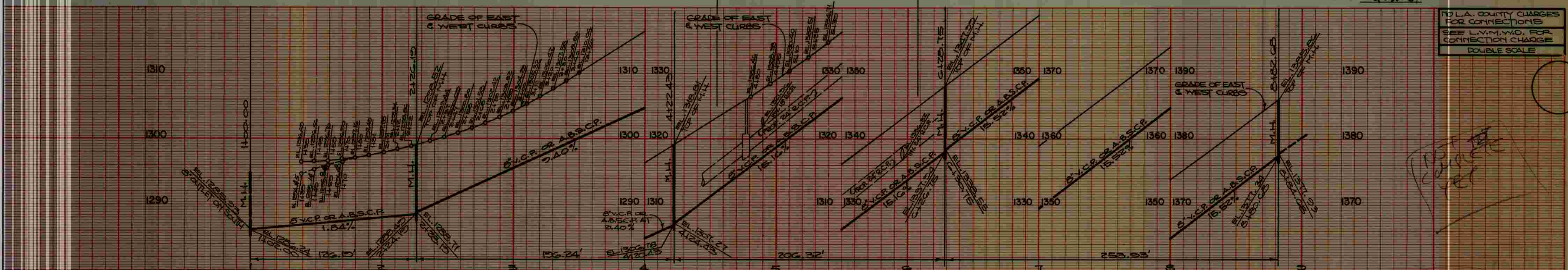
VOID



PC 10637

REVIEWED BY: *Saujo G. Holt* PC10637 PAGE 22
DATE: *6-20-87*

NO L.A. COUNTY CHARGES FOR CONNECTIONS
SEE L.V.M.W.D. FOR CONNECTION CHARGES
DOUBLE SCALE

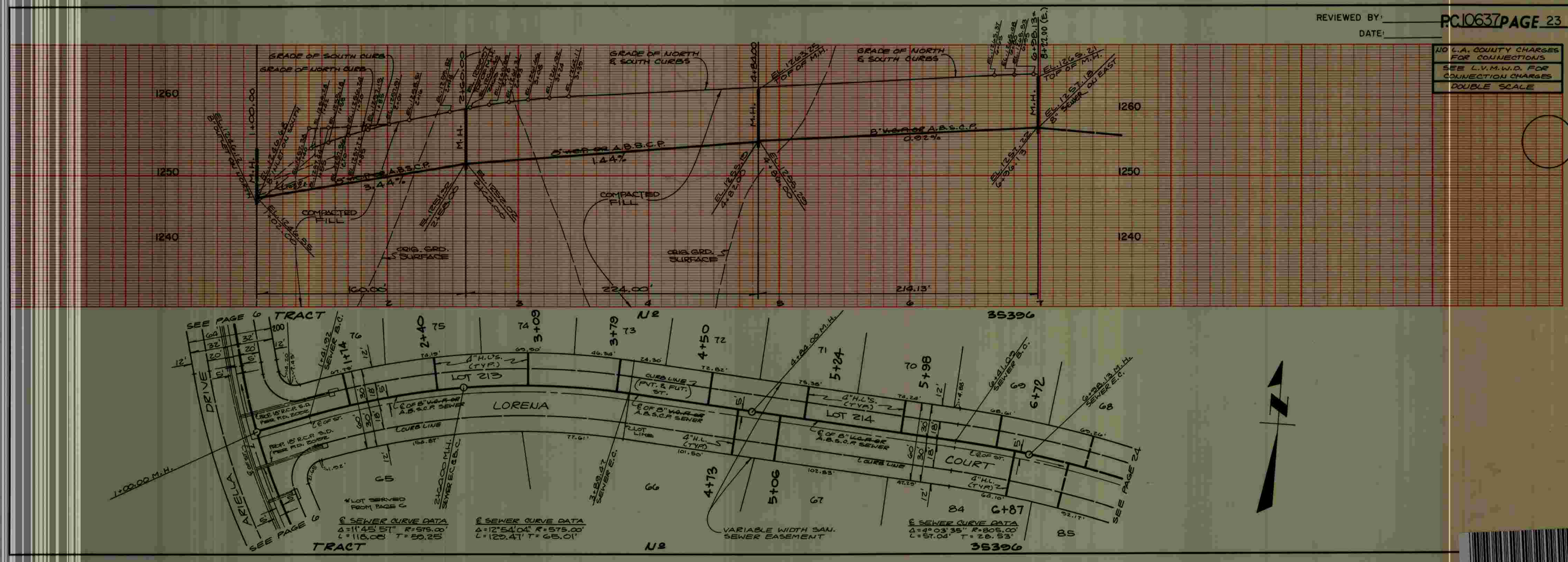


NOT COMPLETE YET

Const. NOT COMPLETE YET

PC 10637

NO L.A. COUNTY CHARGES FOR CONNECTIONS
SEE L.V.M.W.D. FOR CONNECTION CHARGES
DOUBLE SCALE



NO L.A. COUNTY CHARGES FOR CONNECTIONS
SEE L.V.M.W.D. FOR CONNECTION CHARGES
DOUBLE SCALE

