

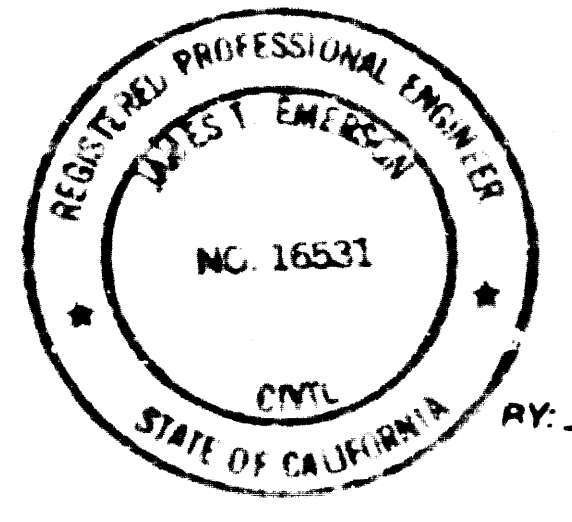
SANITARY SEWERS

TO BE CONSTRUCTED IN

TRACT NO. 43167
PRIVATE CONTRACT NO. 10639

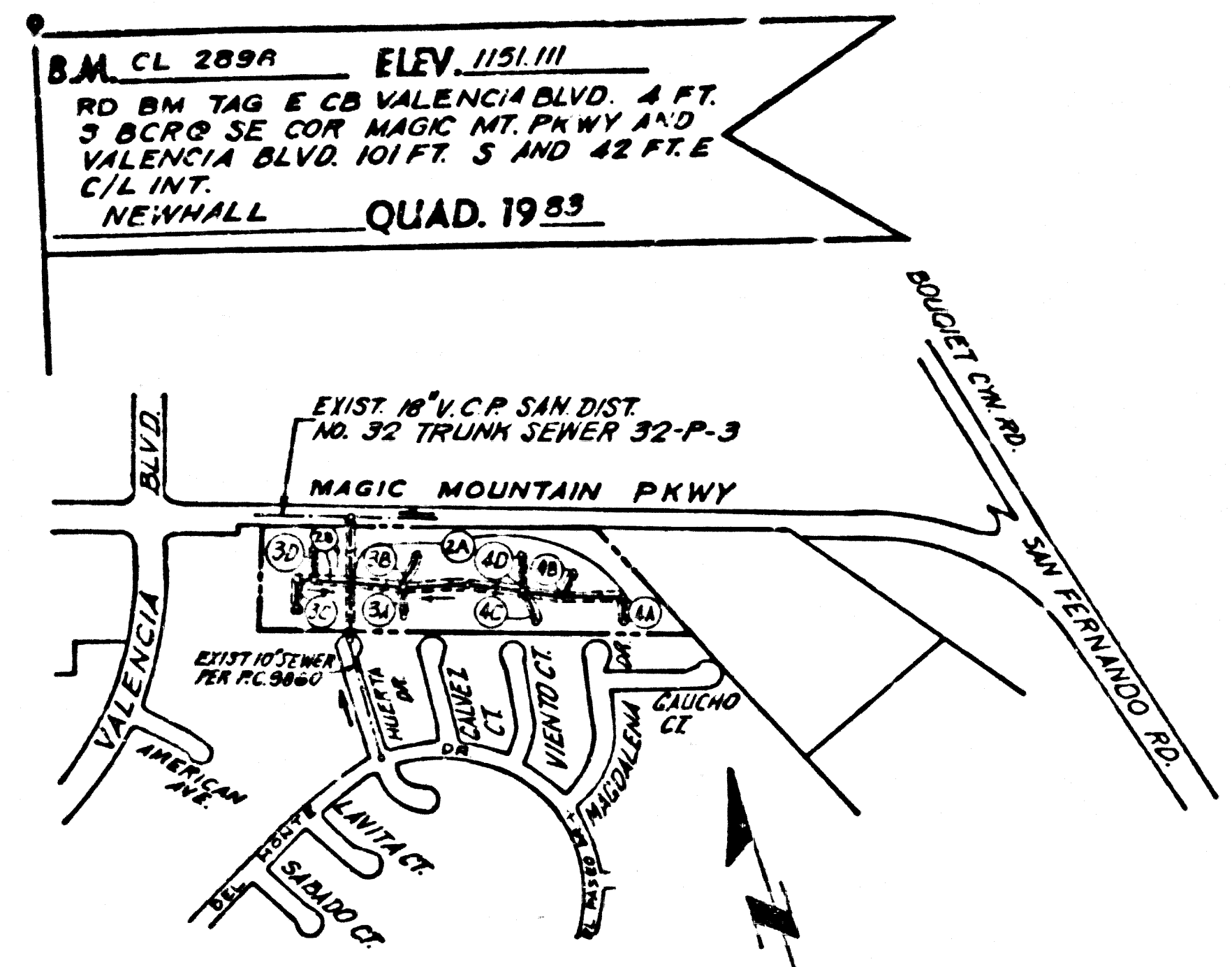
INDEX A-63
2 SHEETS; 4 PAGES

51755



SCALE: VERT. 1" = 4'
HORIZ. 1" = 40'
FEBRUARY, 1987
PREPARED IN THE OFFICES OF
B & E ENGINEERS
823 COLORADO BLVD. SUITE 222
LOS ANGELES, CA 90041 (213) 234-9134
REG. C.E. NO. 16531
EXP. DATE: 6-30-89

1
 TRACT NO. 43167
 0230129



NOTE:
NUMBERS IN CIRCLES
INDICATE PAGE NUMBERS

INDEX MAP
TRACT NO. 43167
P.C. 10639
SCALE: 1" = 600'

NO CONNECTION FOR THE DISPOSAL OF INDUSTRIAL WASTES SHALL BE MADE TO SEWERS SHOWN ON THESE DRAWINGS UNTIL A PERMIT FOR INDUSTRIAL WASTEWATER DISCHARGE HAS BEEN ISSUED BY THE SANITATION DISTRICTS FOR SAID CONNECTION.

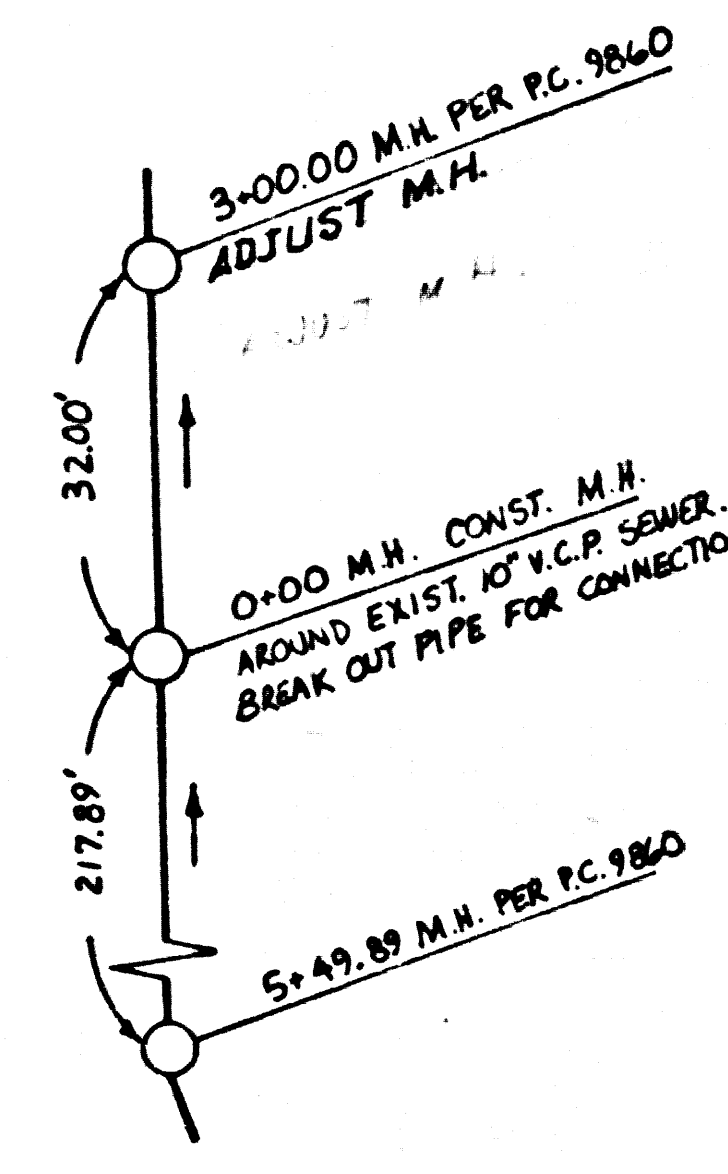
BEFORE BREAKING INTO OR CONSTRUCTION ON A COUNTY SANITATION DISTRICT SEWER AND PRIOR TO FINAL ACCEPTANCE OF THE PROJECT, SANITATION DISTRICT INSPECTOR SHALL BE NOTIFIED BY PHONE (818) 962-8605 SO THAT REQUIRED INSPECTION CAN BE MADE.

REVISION NO. 2 DATE: 7-14-87
BY: B & E ENGINEERS
ADD 4" SADDLE AND H.L. AT STA. 4+00 (SOUTHERLY)

APPROVED: OFFICE OF PUBLIC WORKS DATE RCE

REVISION NO. 1 DATE: 6-11-87
BY: B & E ENGINEERS
REVISE SLOPE OF SEWER LINE FROM STA. 1+00 TO STA. 1+50 ON PAGE 1 TO 2.00% TO MATCH SLOPE OF SEWER LINE FROM STA. 1+50 TO STA. 2+00 ON PAGE 3C AND 4+00 TO STA. 4+50 ON PAGE 3C.

APPROVED: OFFICE OF PUBLIC WORKS DATE RCE



DETAIL 'A'
(NO SCALE)

GENERAL NOTES:

- ELEVATIONS ARE IN FEET ABOVE U.S.C. & G.S. SEA LEVEL DATUM OF 1929.
- NO REVISIONS SHALL BE MADE IN THESE PLANS WITHOUT THE APPROVAL OF THE DIRECTOR OF PUBLIC WORKS.
- NO REVISIONS MADE BY THE DEPARTMENT OF PUBLIC WORKS SHALL SURVEY OR LAY OUT ANY PORTION OF THE WORK.
- GRADES TO WHICH THIS IMPROVEMENT IS TO BE CONSTRUCTED ARE SHOWN ON ALLEYS AND PROFILES GRADE POINTS FOR TYPE OF CURBS. CENTER LINE OF STREETS OR ALLEYS ARE SHOWN BY CIRCLES ON PROFILES AT ALL POINTS BETWEEN DESIGNATED POINTS. THE GRADE SHALL BE ESTABLISHED SO AS TO COMPLY TO A STRAIGHT LINE DRAWN BETWEEN DESIGNATED POINTS.
- THE PRIVATE ENGINEER SHALL FURNISH THE DEPARTMENT OF PUBLIC WORKS WITH GRADE SHEETS AND STATIONING FOR ALL HOUSE LATERALS AND 12" OR 16" BRANCHES AND SHALL PROVIDE STAKES FOR THEM AT THE PROPER LOCATIONS WITH STATIONING PLAINLY MARKED. ALL HOUSE LATERALS SHALL BE CONSTRUCTED IN A PLUMB ALIGNMENT AT RIGHT ANGLES FROM THE MAIN LINE SEWER EXCEPT AS SHOWN ON THE PLANS. HOUSE LATERALS FROM CHIMNEYS SHALL NOT BE AT AN ANGLE OF LESS THAN 45° WITH THE MAIN LINE SEWER. ANY CHANGE IN ALIGNMENT SHALL BE REQUESTED IN WRITING BY THE PRIVATE ENGINEER.
- THE PRIVATE ENGINEER SHALL FURNISH THE HOUSE LATERAL DEPTH 1' THE PROPERTY LINE BELOW THE TOP OF CURB ELEVATION FOR EACH HOUSE LATERAL ON THE GRADE SHEET.
- BEFORE WORK CAN BE STARTED, THE CONTRACTOR MUST OBTAIN A PERMIT TO EXCAVATE IN COUNTY STREETS FROM THE CONSTRUCTION DIVISION OF PUBLIC WORKS PERMIT OFFICE NO. _____ AND PAY A FEE TO THE DIRECTOR OF PUBLIC WORKS. THE COST OF CONSTRUCTION INSPECTION AND RECORD PLANS: 2500 ALCAZAR ST., LOS ANGELES, CALIFORNIA 90008. TO COVER THE COST OF CONSTRUCTION INSPECTION AND RECORD PLANS: 120 SOUTH SPRING STREET LOS ANGELES, CALIFORNIA.
- IF WORK IS TO BE DONE IN A STATE HIGHWAY A PERMIT MUST BE OBTAINED FROM THE STATE OF CALIFORNIA DIVISION OF HIGHWAYS 120 SOUTH SPRING STREET LOS ANGELES, CALIFORNIA.
- APPROVAL OF THIS PLAN BY THE COUNTY OF LOS ANGELES DOES NOT CONSTITUTE A REPRESENTATION AS TO THE ACCURACY OF THE LOCATION OR OF THE EXISTENCE OR NON-EXISTENCE OF ANY UNDERGROUND UTILITY PIPE OR STRUCTURE WITHIN THE LIMITS OF THIS PROJECT. THIS NOTE APPLIES TO ALL PAGES.
- REFER TO SECTION 7104.1 OF THE STANDARD SPECIFICATIONS REGARDING SAFETY ORDERS.
- PRIOR TO THE ISSUANCE OF THE REQUIRED SEWER CONSTRUCTION PERMIT, THE CONTRACTOR SHALL OBTAIN AND FILE WITH THE DEPARTMENT OF PUBLIC WORKS FORMS OF A PERMIT TO EXCAVATE IN COUNTY STREETS FROM THE CONSTRUCTION DIVISION OF PUBLIC WORKS. FORMS A PERMIT FOR EXCAVATIONS AND TRENCHES FROM THE STATE OF CALIFORNIA, A DIVISION OF INDUSTRIAL SAFETY AND A CERTIFICATE OF WORKERS COMPENSATION INSURANCE WITH THE DEPARTMENT OF PUBLIC WORKS 2500 ALCAZAR ST., LOS ANGELES, CALIFORNIA 90008. FORMS A PERMIT TO EXCAVATE IN COUNTY STREETS SHALL BE NOTIFIED IN WRITING PRIOR TO CANCELLATION OF POLICY.

CONSTRUCTION NOTES:

- WORK SHALL BE CONSTRUCTED ACCORDING TO THE STANDARD SPECIFICATIONS FOR PUBLIC WORKS CONSTRUCTION 1986 EDITION WITH THE FOLLOWING SUPPLEMENTS AND SPECIAL PROVISIONS FOR THE CONSTRUCTION OF SANITARY SEWERS LISTED HEREIN.
- THE CONTRACTOR SHALL NOTIFY THE CONSTRUCTION DIVISION BY TELEPHONE 228-8281 AT LEAST TWENTY-FOUR HOURS BEFORE STARTING ANY WORK UNDER THE CONTRACT.
- HOUSE LATERALS TO BE CONSTRUCTED WITH INVERTS AT PROPERTY LINE 4 FEET BELOW CURB GRADE EXCEPT AS NOTED.
- WYE OR TEE BRANCHES MAY BE USED FOR CONNECTIONS TO MAINLINE SEWERS EXCEPT AS NOTED.
- ALL STRUCTURES SHALL BE EITHER BRICK MANHOLES PER 8-3 OR PRECAST CONCRETE MANHOLES PER 5-26 EXCEPT AS NOTED.
- PROVIDE STAKES ON THE PROPERTY LINE OR PROPERTY LINES PRODUCED AT RIGHT ANGLES TO THE SEWER LINE AT THE CENTER LINE OF EACH MANHOLE.
- MANHOLE TOPS IN IMPROVED RIGHTS OF WAY TO BE LEVEL WITH FINISHED GRADE.
- WYTHED CLAY PIPE JOINTS SHALL BE TYPE "D" OR "Q" PER STANDARD SPECIFICATIONS SECTION 200-2.
- IF A POWER HOLE IS WITHIN THREE FEET OF THE SEWER THE SEWER SHALL BE ENCASED PER 8-35 CASE H TWO FEET ON EACH SIDE FROM THE POINT OF INTERFERENCE.
- IF DURING THE COURSE OF CONSTRUCTION IT IS DETERMINED THAT THERE IS LESS THAN FOUR FEET OF COVER OVER THE TOP OF A MAINLINE OR HOUSE LATERAL V.C.P. SEWER WHICH IS NOT INDICATED ON THE PLANS, THE PIPE SHALL BE ENCASED PER 8-35 CASE H UNLESS OTHERWISE APPROVED BY THE DIRECTOR OF PUBLIC WORKS.
- ALL JOINTS BETWEEN CAST IRON PIPE AND WYTHED CLAY PIPE SHALL BE MADE WITH A RUBBER SLEEVE JOINT, TYPE "C" OR "D" (WITH RUBBER) IF NECESSARY PER STANDARD SPECIFICATIONS SECTION 200-2.
- SEWERS TO BE TESTED FOR LEAKAGE PER SECTION 200-1.4 OF THE STANDARD SPECIFICATIONS AND SPECIAL PROVISIONS.
- RESURFACE ALL TRENCHES WITHIN PAVED AREAS TO MEET LOS ANGELES COUNTY PUBLIC WORKS OR CALIFORNIA STATE HIGHWAY REQUIREMENTS IN ACCORDANCE WITH PERMITS.
- ALL COMPLIANCE WITH SECTION 200-1.3 OF THE STD. SPECIFICATIONS WILL BE REQUIRED FOR BACKFILL IN STREETS. CERTIFICATION OF BACKFILL COMPACTION AND SAND EQUIVALENTS BY A QUALIFIED REGISTERED TESTING LABORATORY SHALL BE PROVIDED BY THE PERMITTEE PRIOR TO THE ISSUANCE OF A CERTIFICATE OF MATERIAL ACCEPTANCE.
- SPECIAL BACKFILL REQUIREMENT CONSTRUCTION IN BACKFILL TRENCH AND REPLACE OTHER EARTH SO AS TO ACHIEVE THE NATURAL OR FINISHED GRADES AND SLOPES SHOWN ON THE GRADING PLAN APPROVED FOR THIS DEVELOPMENT BY THE LAND DEVELOPMENT DIVISION (B.L. BACKFILL AND EARTH REPLACEMENTS SHALL BE COMPACTED TO A MINIMUM OF 90% OF MAXIMUM DENSITY PER A.S.T.M. STD. METHOD OF TEST D998-57. ACCEPTABLE CERTIFICATION OF SUCH COMPACTION SHALL BE SUBMITTED TO THE CONSTRUCTION DIVISION PUBLIC WORKS DEPARTMENT.

THE FOLLOWING LATEST REVISED STANDARD PLANS ON FILE IN THE OFFICE OF THE DEPARTMENT OF PUBLIC WORKS SHALL APPLY IN THE CONSTRUCTION OF THIS PROJECT:

LEGEND	8-1
MINIMUM PUBLIC SAFETY REQUIREMENTS	8-2
BRICK MANHOLE	8-3
STANDARD MANHOLE STEP	8-17
BEDDING FOR SEWER PIPE	8-21
CRACKING AND ENGAGEMENT	8-23
WYE OR TEE SUPPORT	8-26
ALLOWABLE TRENCH WIDTHS	8-33
LOCKING MANHOLE FRAME AND COVER	8-38
NON-REINFORCED PRECAST CONCRETE MANHOLE	8-38

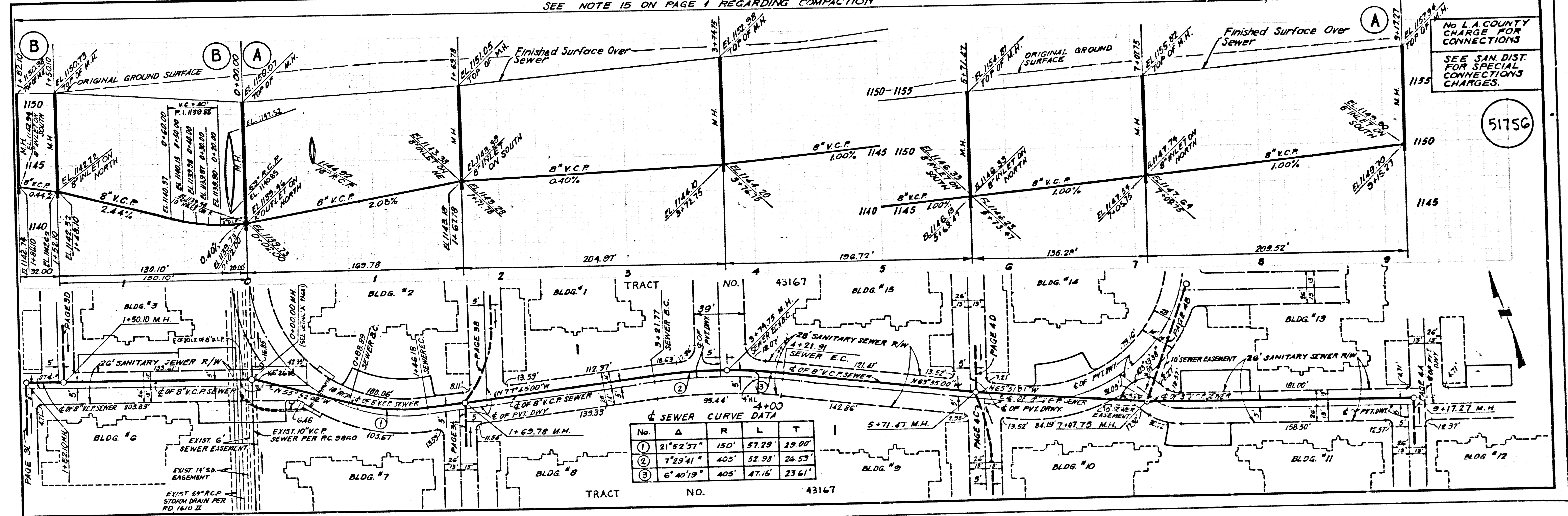
COUNTY OF LOS ANGELES, CALIFORNIA
THOMAS A. TIDEMANSON, DIRECTOR OF PUBLIC WORKS
APPROVED: *Carl J. Blum* 4/14/87 (DATE)
CHECKED: *James T. Edwards* 4/15/87 (DATE)
REG. C.E. NO. 16531

CHARLES W. CARRY, CHIEF ENGINEER
APPROVED: *Charles W. Carry* 4/16/87 (DATE)
REG. C.E. NO. 16531

SANTA CLARITA VALLEY BLDG. DIST. B-2

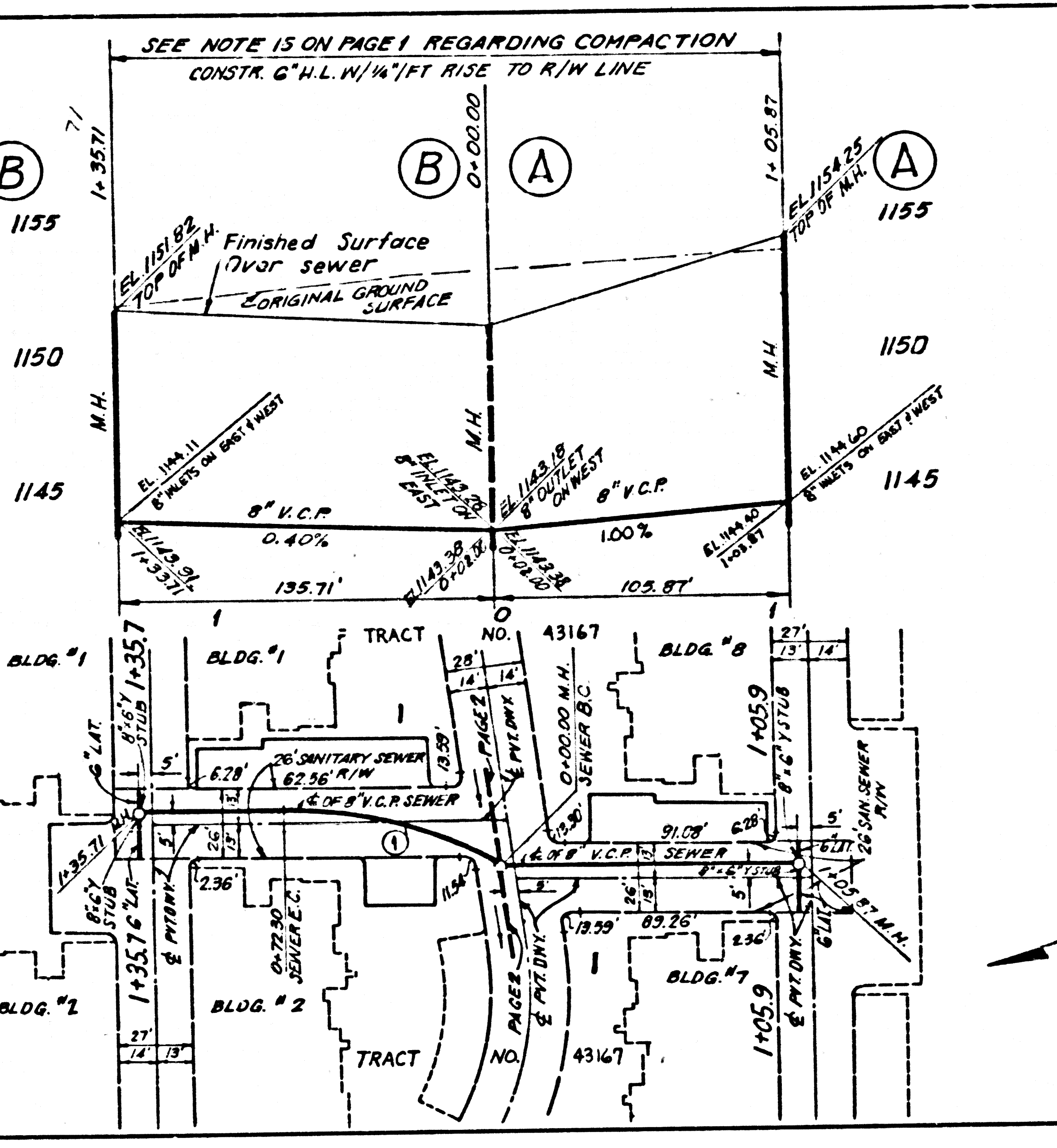
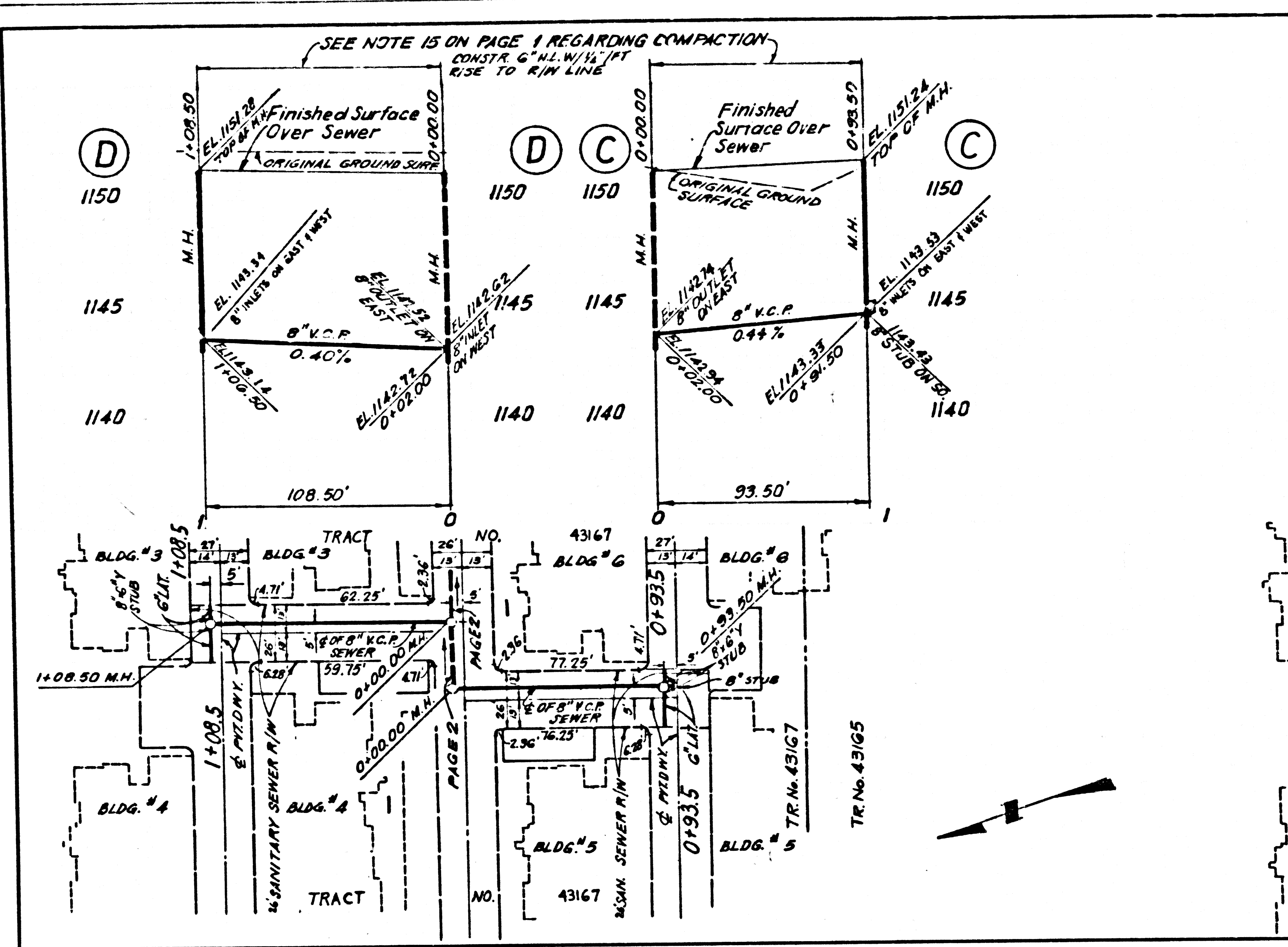
SEE NOTE 15 ON PAGE 1 REGARDING COMPACTION

REVIEWED BY: *Sam G. Hall* 4-15-87 P.C. 10639 PAGE 2



NO L.A. COUNTY CHARGE FOR CONNECTIONS
SEE SAN. DIST. FOR SPECIAL CONNECTIONS CHARGES.

51756

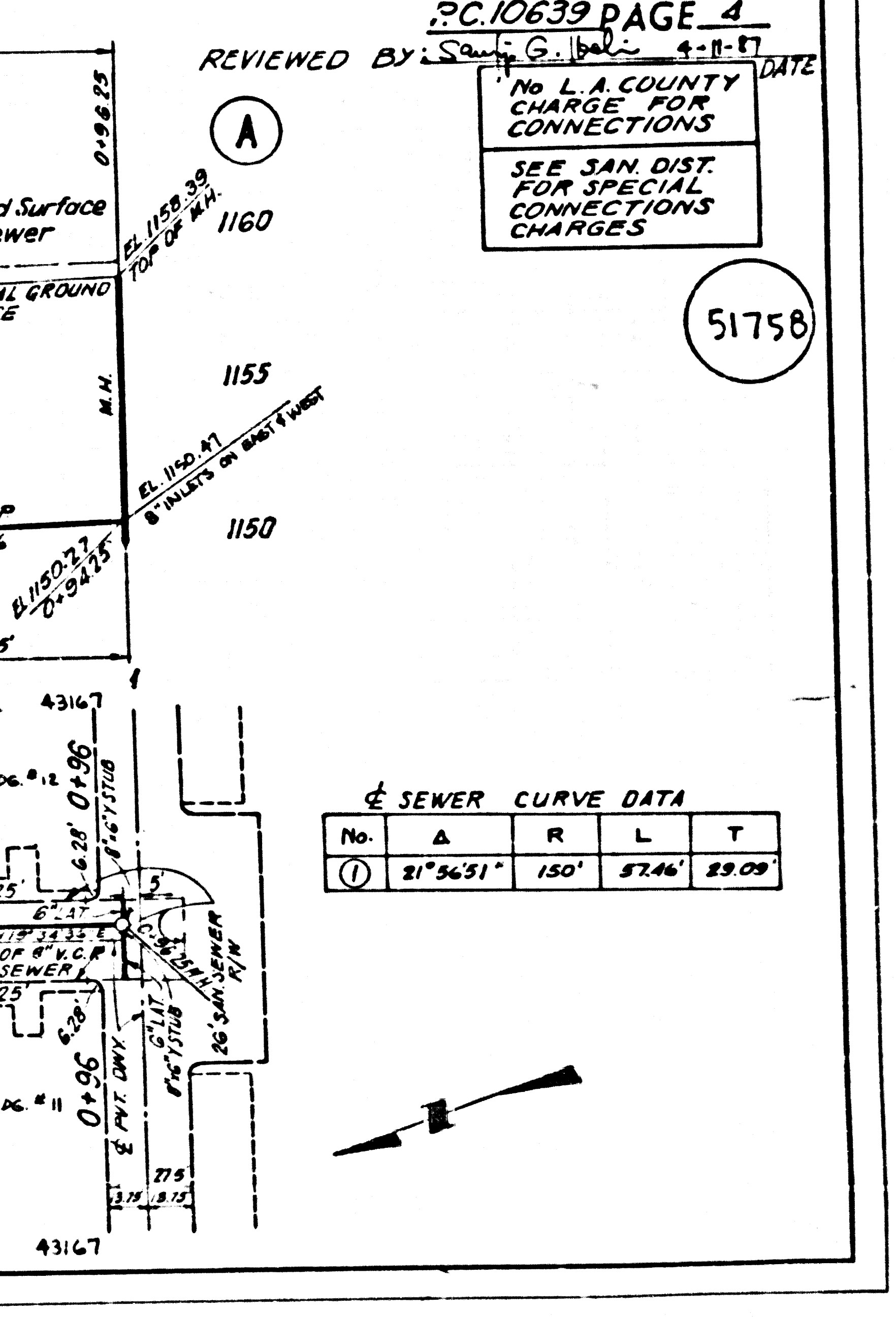
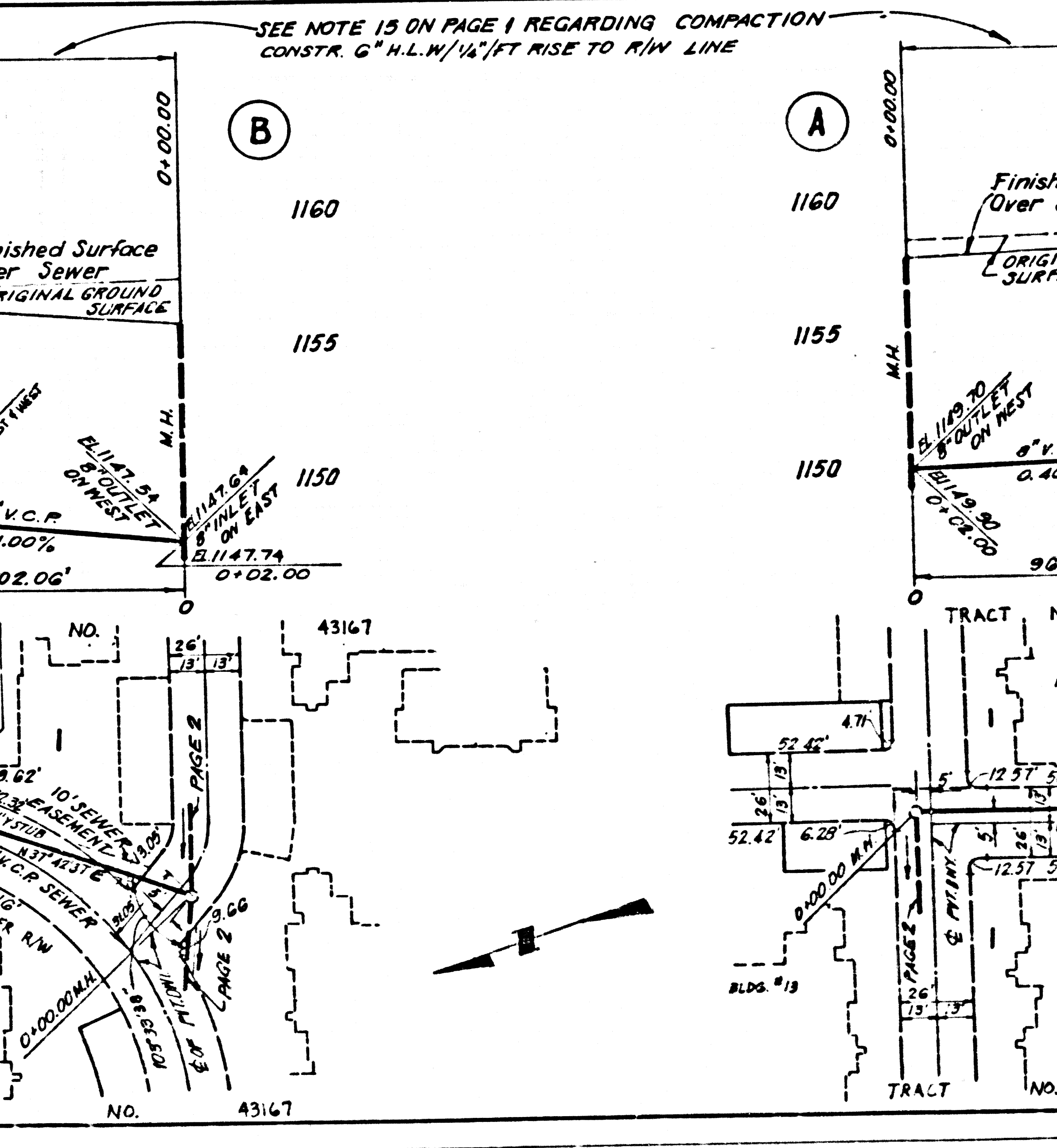
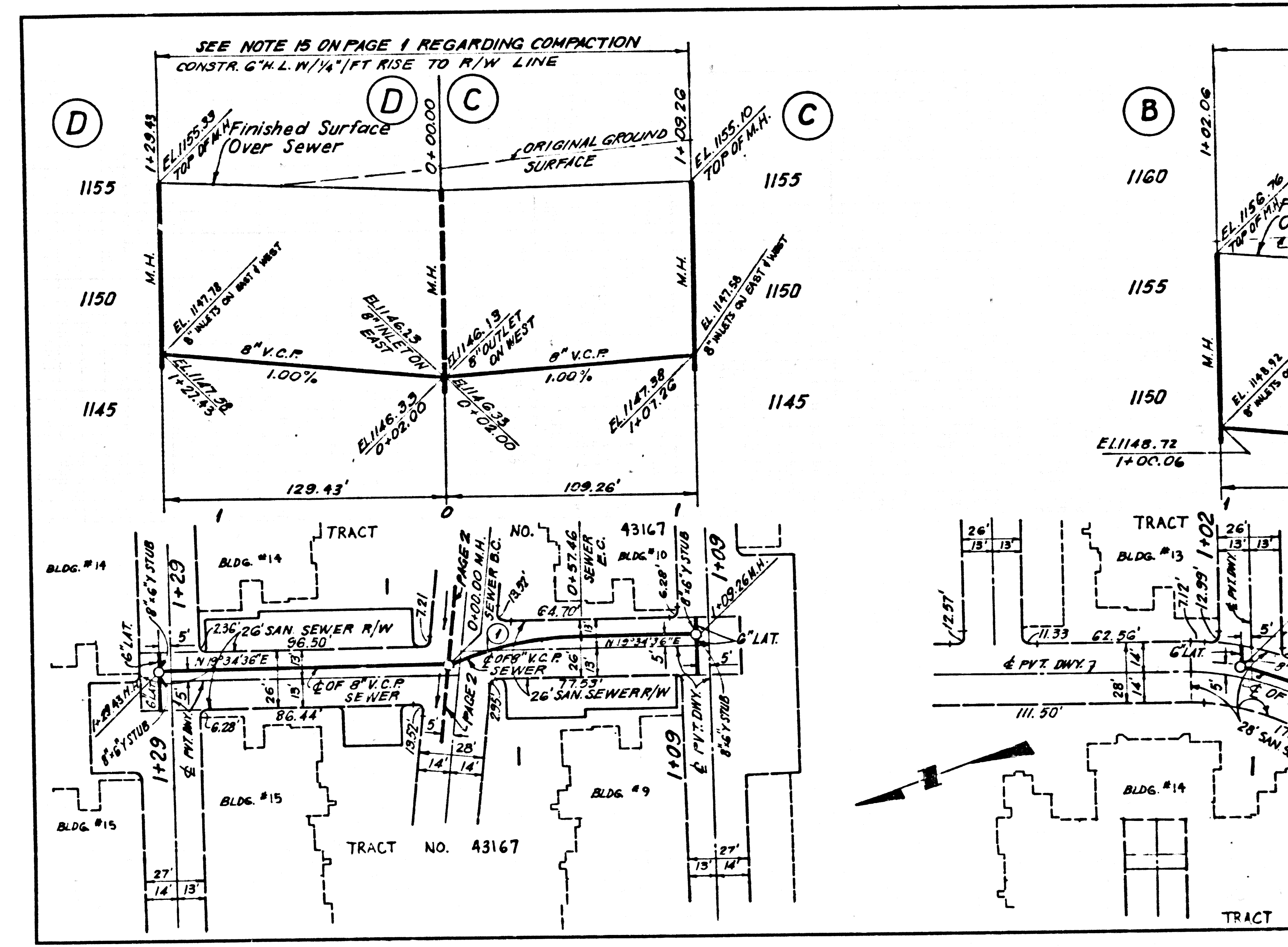


PC.10639 PAGE 3
REVIEWED BY: [Signature] DATE: 4-11-17
No L.A. COUNTY CHARGE FOR CONNECTIONS
SEE SAN. DIST. FOR SPECIAL CONNECTIONS CHARGES.

51757

SEWER CURVE DATA

No.	A	R	L	T
1	34°31'19"	120'	72.30'	37.29'



PC.10639 PAGE 4
REVIEWED BY: [Signature] DATE: 4-11-17
No L.A. COUNTY CHARGE FOR CONNECTIONS
SEE SAN. DIST. FOR SPECIAL CONNECTIONS CHARGES.

51758

SEWER CURVE DATA

No.	A	R	L	T
1	21°56'31"	150'	57.46'	29.09'

0520139
 TRAFFIC PART